

NATIONAL CONFERENCE OF BAR EXAMINERS

MADISON, WISCONSIN

AMENDMENT TO AN APPROVED GENERAL DEVELOPMENT PLAN & SPECIFIC IMPLEMENTATION PLAN

Potter Lawson

Consultant:



**ARNOLD AND
OSHERIDAN INC**
CONSULTING ENGINEERS
2010 STATE STREET, SUITE 200
MADISON, WISCONSIN 53703
TEL: 608-263-1111 FAX: 608-263-4880

Notes:

2/22/06	Madison Plan Commission Review	
Date	Issuance/Revisions	Symbol

NATIONAL CONFERENCE
OF BAR EXAMINERS

MADISON, WISCONSIN

Drawing Title:
COVER DRAWING

PI Project Number: 2003.001.00	Sheet No. CD01
Drawn By: SK	

Potter Lawson

15 Ellis Potter Court
Madison, Wisconsin 53711
(608) 274-2741
fax: 274-3874

WILSON STREET

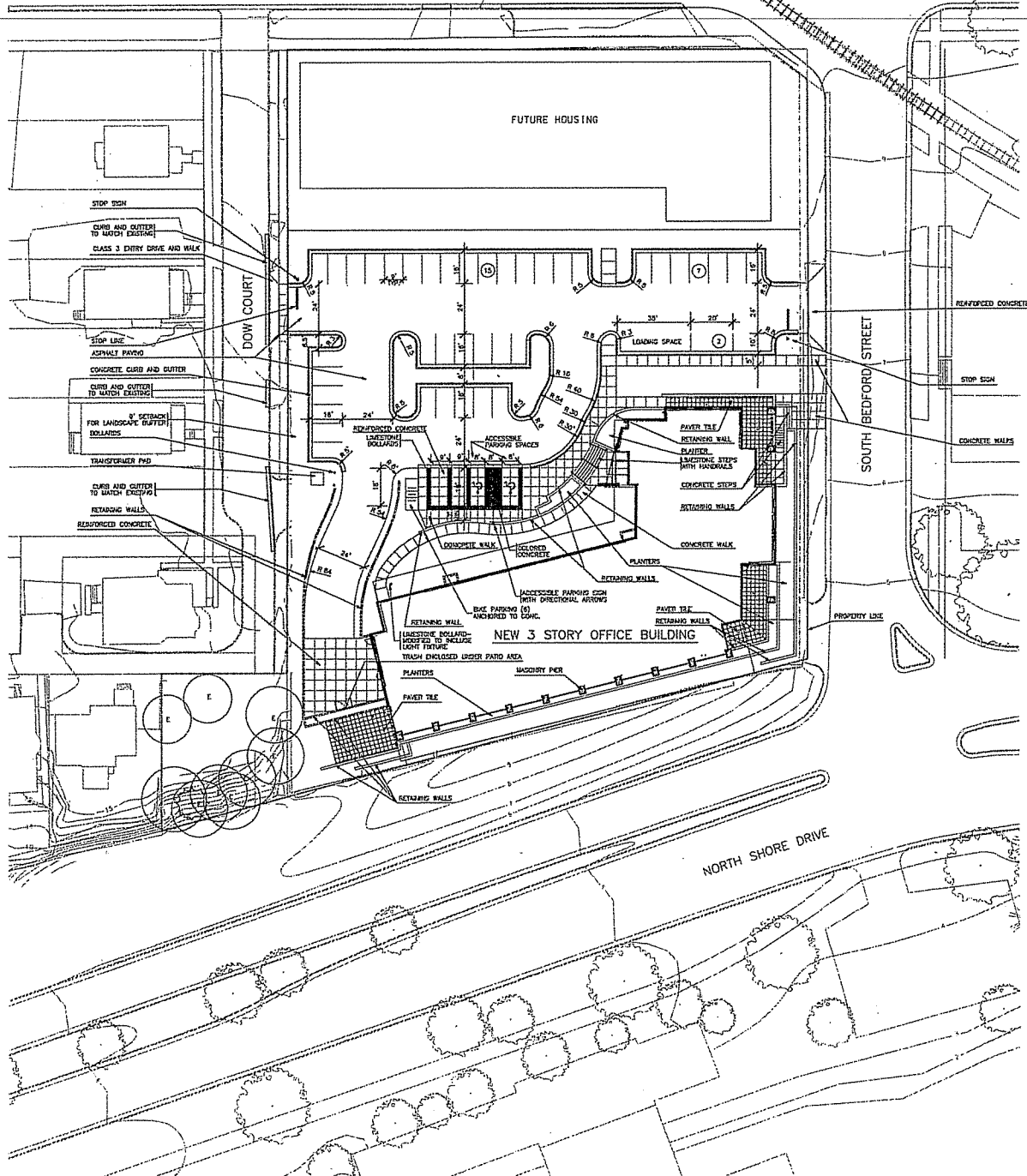
FUTURE HOUSING

DOW COURT

SOUTH BEDFORD STREET

NORTH SHORE DRIVE

NEW 3 STORY OFFICE BUILDING



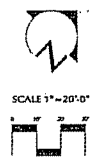
Potter Lawson



Notes:

11/14/05	PARKING LOT PLAN SUBMITTAL	
5/25/06	LEDC SUBMITTAL	
7/28/06	PLAN CONGRESSION SUBMITTAL	
7/19/06	PLAN CONGRESSION SUBMITTAL	
Date:	Author: JLF/MLL	Symbol:

J.H. FINDORFF & SON
 HEADQUARTERS
 J.H. FINDORFF & SON, INC.
 MADISON, WISCONSIN



SCALE 1"=20'-0"

Drawn by:
 ARCHITECTURAL SITE PLAN
 PHASE 3: FUTURE MAJOR
 ALT. OF APPROVED GDP-
 SIP SUBMISSION

Project Number:	101	Sheet No.:	C101
Date:	1/11/06	Drawn by:	JLF

Consultant:



Notes:

- LEGEND**
- 1/4" BOLD SOLID INCH SIZE
 - PK WALL
 - OVERHEAD CP
 - UNDERGROUND ELECTRIC LINE
 - LANDSCAPE SCENER
 - WATER MAIN
 - GAS MAIN
 - UNDERGROUND ELECTRIC
 - UNDERGROUND FIBER OPTIC
 - STORM SEWER
 - ELECTRIC TRANSMISSION WALL
 - MANHOLE
 - CURB HIGH/PAV
 - POWER POLE 8"/24"
 - LEAF POLE
 - GAS METER
 - TELEPHONE METER
 - WALK
 - ROADWAY
 - LAND POLE
 - CONCRETE
 - LIGHTNING MULL
 - BRK
 - CONCRETE/STONE WALL
 - TRUNK WALL
 - CONE CURB
 - ROLLER WALL
 - TRK W/ SIDE
 - ENHANCED W/ SIDE
 - BRIDGE
 - SPOT ELEVATION (IN DECIMAL FT.)
 - TOP OF CURB ELEVATION
 - EXISTING COUNTER
 - EXISTING ELEVATION AND IN
 - ROAD DATUM
 - RAILROAD TRACK
 - FDICE
 - ACCESSIBLE PARKING SPACE
 - REARER OF PARKING SPACE
 - PARKING CROSSING BOWL

REFERENCE UTILITIES

Madison Gas & Electric Company
 1201 Jackson Street
 Madison, WI 53703
 (608) 251-2000

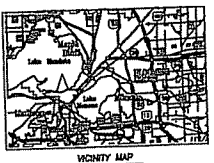
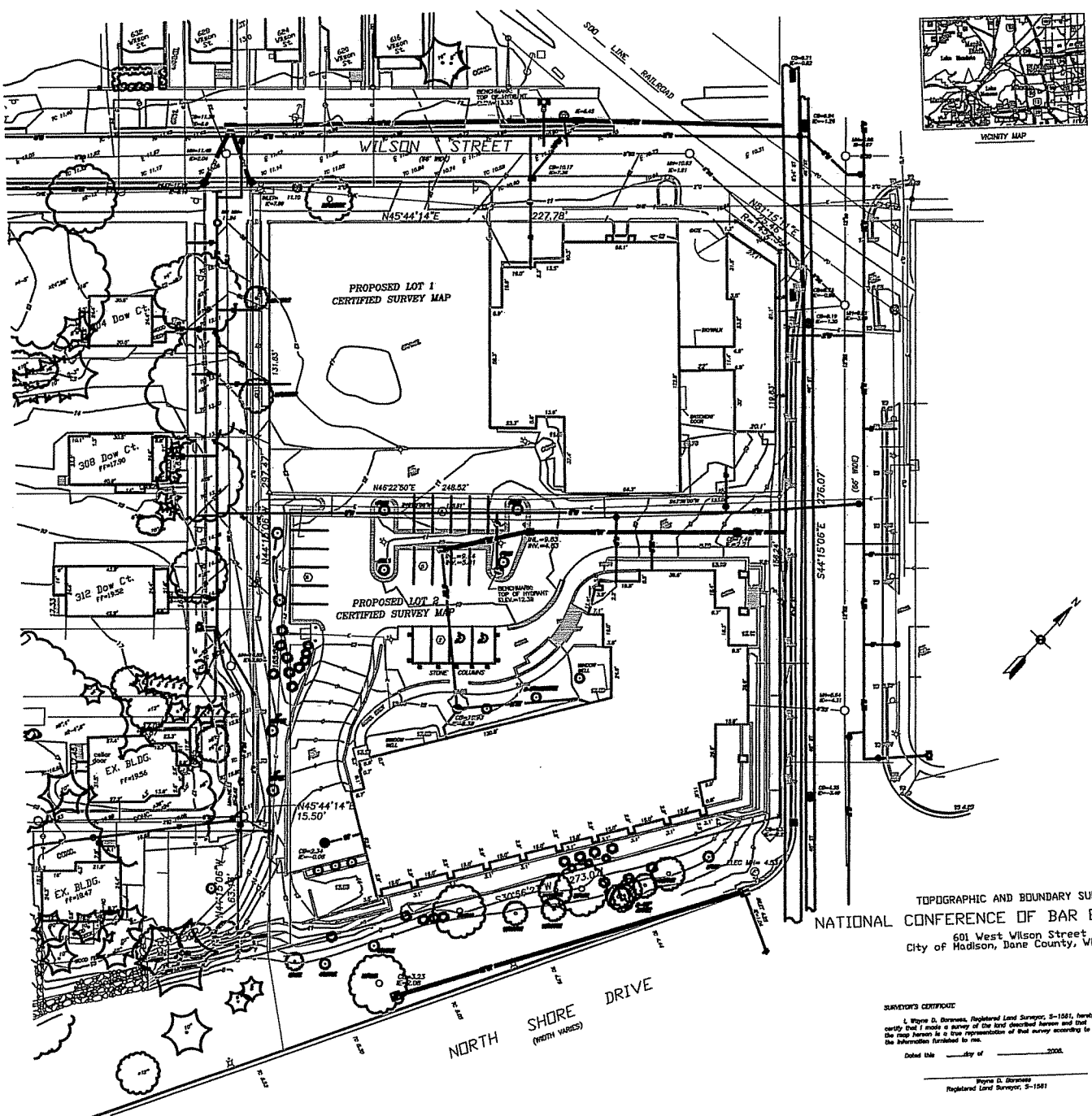
City of Madison Water Utility
 119 East Oak Street
 Madison, WI 53703-1431
 (608) 248-6431

City of Madison Street Construction and Maintenance
 1822 East Street
 Madison, WI 53704
 (608) 248-4430

Chapin Communications
 2201 Lakeside Drive
 Madison, WI 53704
 (608) 274-3833

SDC
 152 Chase Street
 Madison, WI 53704
 (608) 252-8441

SURVEYED FOR:
 National Conference of Bar Examiners
 601 West Wilson Street
 Madison, WI 53703-2616



TOPOGRAPHIC AND BOUNDARY SURVEY
 NATIONAL CONFERENCE OF BAR EXAMINERS SITE
 601 West Wilson Street
 City of Madison, Dane County, Wisconsin

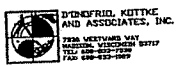
SURVEYOR'S CERTIFICATE

I, **Payne D. Boronick**, Registered Land Surveyor, S-1581, hereby certify that I made a survey of the land described herein and that the map herein is a true representation of that survey according to the information furnished to me.

Dated this _____ day of _____, 2003.

Payne D. Boronick
 Registered Land Surveyor, S-1581

DATE: 1-20-04
 REV: 8-12-04
 SCALE: 1" = 20'
 FW: 06-02-101



Date	Issuance/Revision	Symbol
02/22/04	MADISON PLAN COMMISSION REVIEW	

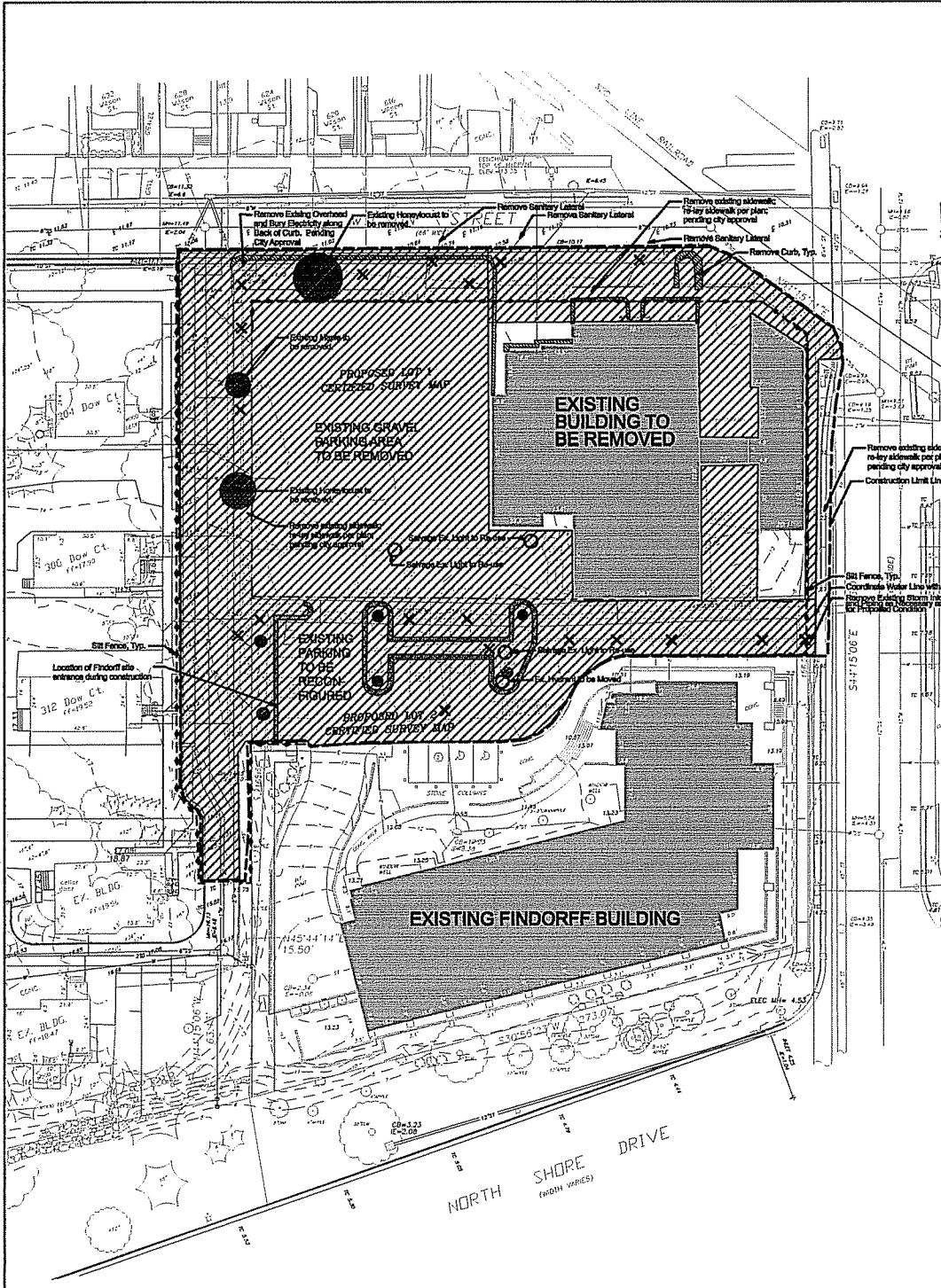
THE NATIONAL CONFERENCE OF BAR EXAMINERS

MADISON, WISCONSIN

SITE SURVEY

Project Number: 2003.06.02
 Drawing No: RLF

L000



- Notes:**
- Remove Pavement
 - Remove Curb
 - Remove Existing Tree
 - Remove Utility
 - Silt Fence

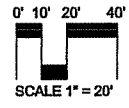
1. Site will be excavated to construct underground parking structure.
2. Wood chips from existing trees to be removed should be recycled and re-used on-site.
3. Provide silt filter on any pumping operation for the lower level parking grading.
4. Stabilized construction entrances to be provided at all access points to the site from surrounding roadways.

NO./REV.	DESCRIPTION	DATE	BY	CHECKED

THE NATIONAL CONFERENCE OF BAR EXAMINERS

MADISON, WISCONSIN

DATE: 03/25/04
 PROJECT: MADISON PLAY COMPLEX REVEAL



SCALE 1" = 20'

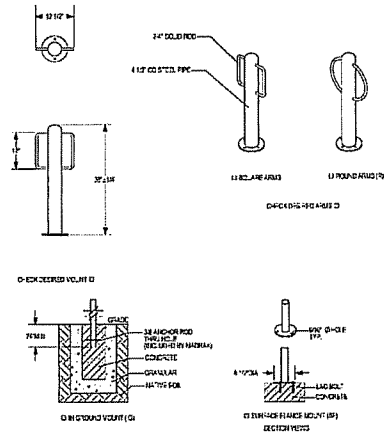
SITE PREPARATION AND EROSION CONTROL
 DRAWING NO. L100

Consultant:



Notes:

1. Structure walls are located where below-grade parking structure extends upward above grade to form wall for surface parking. Structure walls along public sidewalks will be veneered with stone to match existing Findorff walls.
2. Retainins walls to be cast-in-place concrete with stone veneer to match existing Findorff building.
3. Exterior Bicycle Racks will be from Madrax, Middleton, WI. Round-arm with surface mount will be selected. See detail this sheet.
4. NCBE must provide 17 Bike Parking Stalls, 6 are provided at grade, 12 are provided in underground parking structure.
5. As per plan, 12 vehicle stalls on the NCBE surface parking lot will be designated for Findorff employees/visitor use. These stalls are designated with an "F" on this sheet.

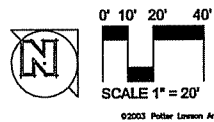
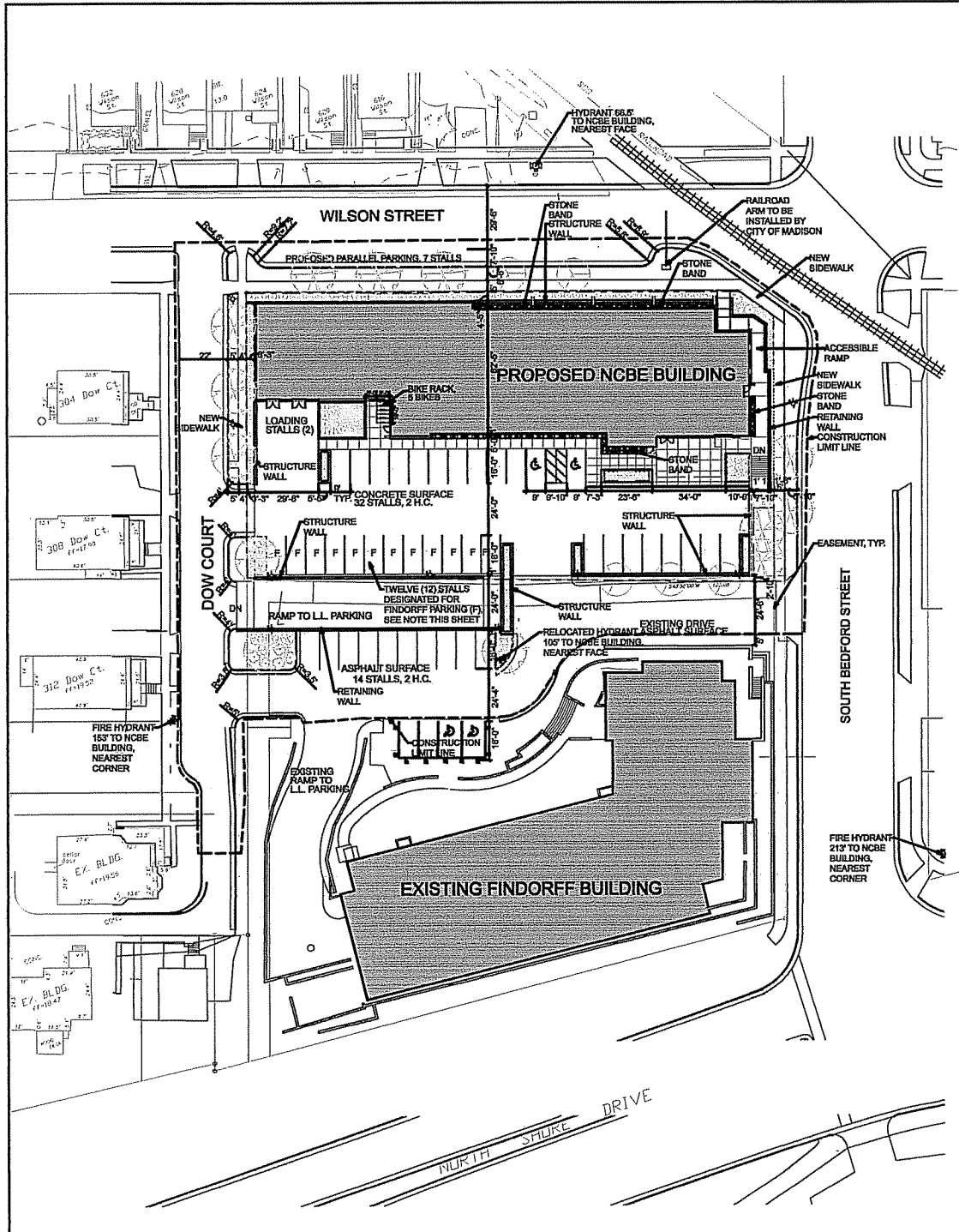


PROJECT: 02-022/04
DATE: 02/22/04
DATE: 02/22/04

NOTES:
 1. SEE PLAN FOR BIKE RACK LOCATIONS.
 2. CONTACT MADRAX TO SELECT COLOR PAINT. SEE LANDSCAPE VENEER PREPARATIONS.
 3. SEE PLAN FOR BIKE RACK TYPE AND DIMENSIONS.
 4. DIMENSIONS ARE SUBJECT TO CHANGE. OTHER NOTES.

02/22/04
 Date: _____
 Location/Revision: _____
 Symbol: _____

CUT SHEET FOR EXTERIOR PARKING BY MADRAX, MIDDLETON, WI

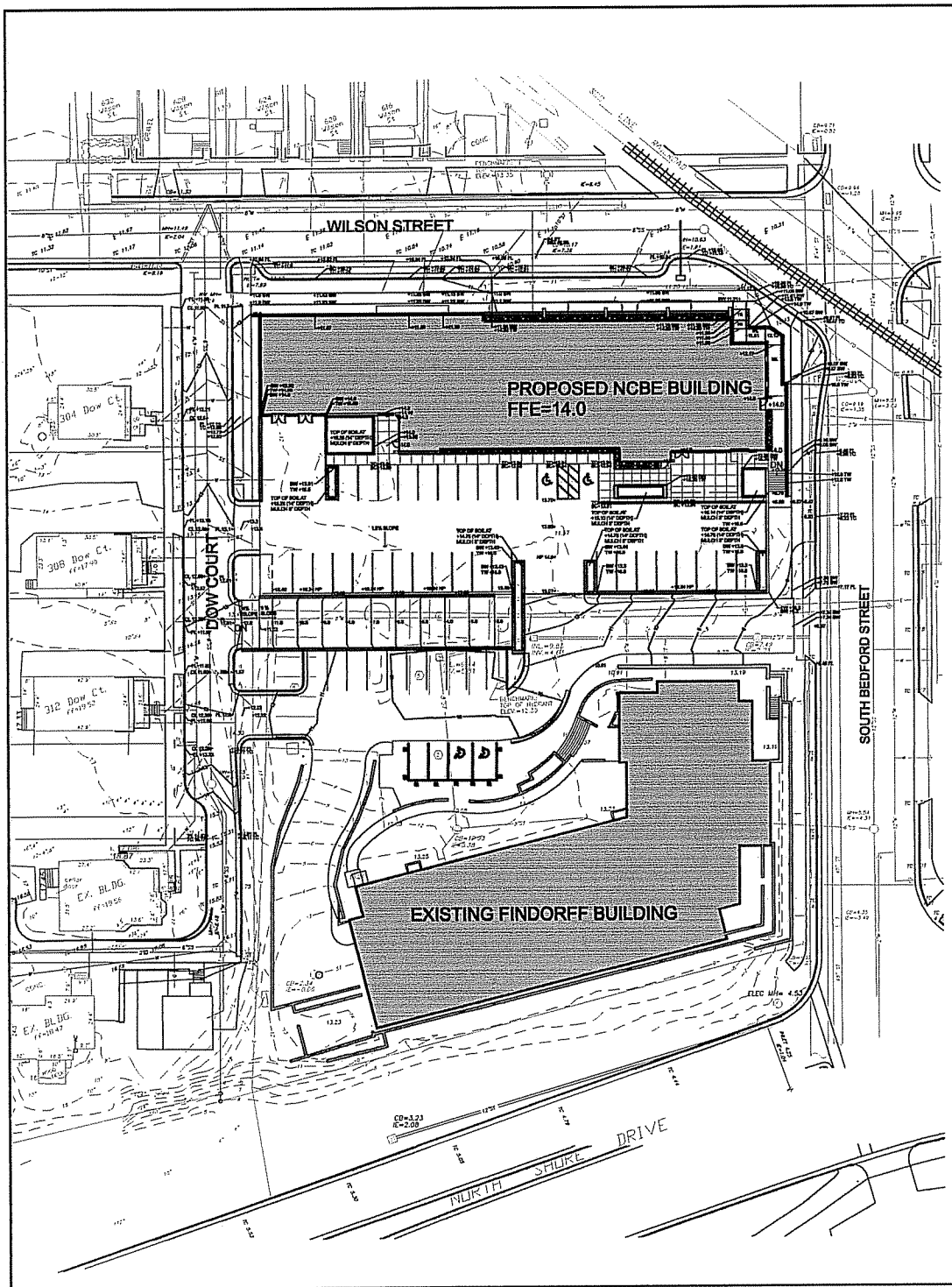


THE NATIONAL CONFERENCE OF BAR EXAMINERS

MADISON, WISCONSIN

LAYOUT PLAN

L101



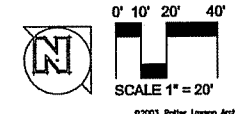
Notes:
 FL = FLOW LINE
 TC = TOP OF CURB
 BC = BOTTOM OF CURB
 TW = TOP OF WALL
 BW = BOTTOM OF WALL
 SW = SIDEWALK ELEVATION
 HP = HIGH POINT

03/22/06	MADISON PLAN COMMISSION REVIEW	
Date	Issuance/Re/Issue	Sync/Doc

**THE NATIONAL
CONFERENCE OF BAR
EXAMINERS**

MADISON, WISCONSIN

GRADING PLAN

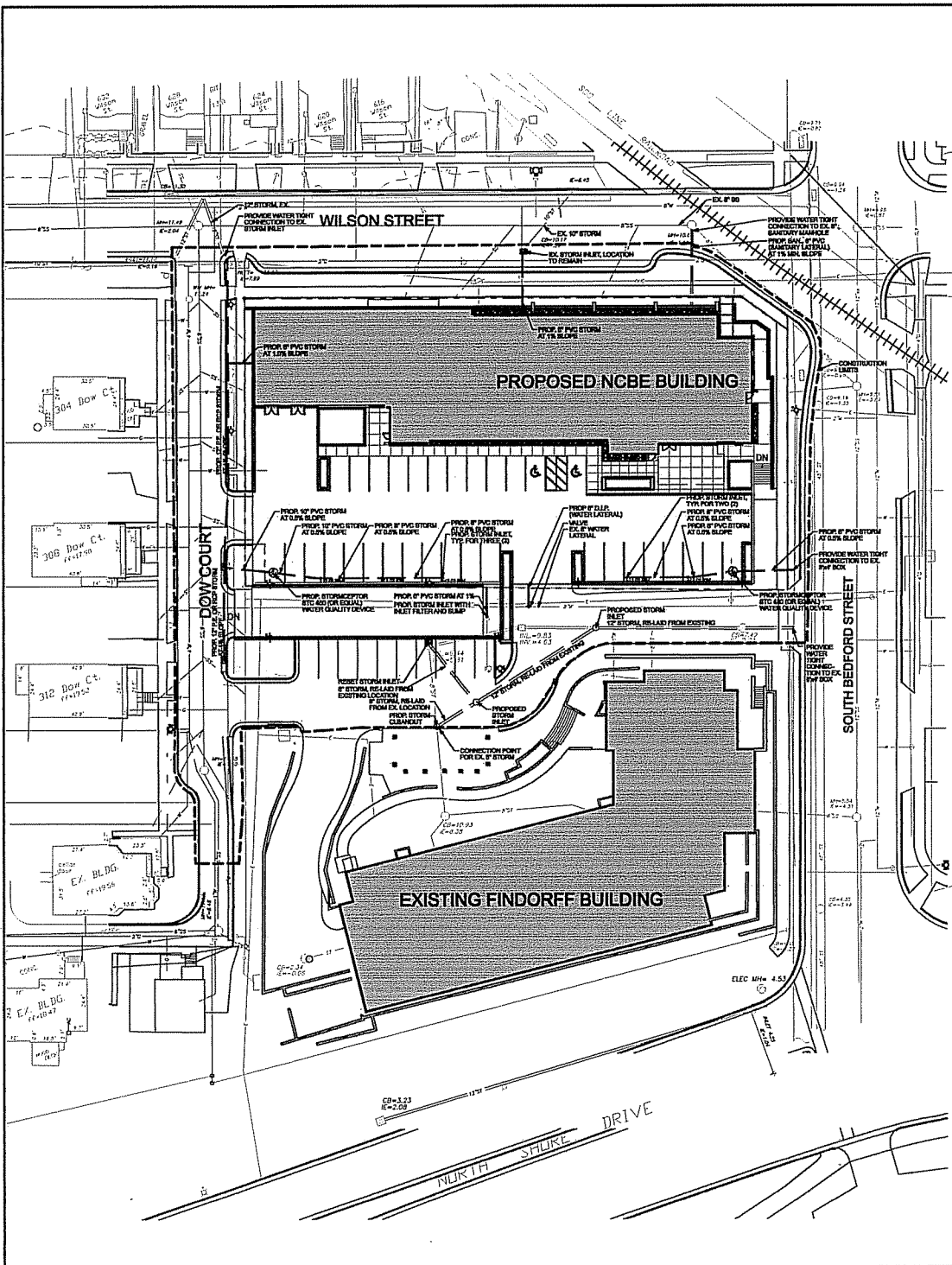


Consultant:



Notes:

WILKINSON AND
POWERS INC.
200 S. WISCONSIN ST.
MADISON, WI 53703

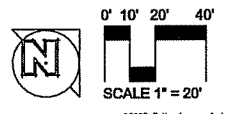


02/22/06 MADISON PLAN COMMISSION REVIEW
Date Issuance/Revision Symbol

**THE NATIONAL
CONFERENCE OF BAR
EXAMINERS**

MADISON, WISCONSIN

SITE UTILITIES PLAN



L103

Consultant:



Notes:

1. Areas designated as lawn shall be seeded with DOT #20 seed mix.
2. Edging shall be aluminum with black finish.
3. Decorative stone band of mulch chosen by landscape architect, similar to Mexican River Pebbles.
4. All perennial and shrub beds, unless otherwise noted, shall be mulched with shredded hardwood bark mulch.

PLANT SCHEDULE

KEY	SCIENTIFIC NAME	COMMON NAME	SIZE AT PLANTING	ROOT COND.	QUANTITY
TALL GROWING DECIDUOUS TREES					
AF	<i>Acer x. freemanii</i> 'Armstrong'	Armstrong Freeman Maple	2 1/2" Cal.	BB	6
CC	<i>Corylus californica</i>	Turkish Filbert	2 1/2" Cal.	BB	1
GB	<i>Ginkgo biloba</i> 'Princeton Sentry'	Princeton Sentry Ginkgo	2 1/2" Cal.	BB	4
OV	<i>Ostrya virginiana</i>	Hopbloom	2 1/2" Cal.	BB	2
ORNAMENTAL TREES					
PC	<i>Pyrus calleryana</i> 'Cleveland Select'	Flowering Pear	2 1/2" Cal.	BB	5
EVERGREEN SHRUBS					
JC	<i>Juniperus chinensis</i> 'Sea Green'	Sea Green Juniper	18" Spr.	GG	6
JH	<i>Juniperus horizontalis</i> 'Wiltonii'	Blue Run Juniper	18" Spr.	GG	5
JS	<i>Juniperus sabina</i> 'Araucaria'	Araucaria Juniper	18" Spr.	GG	21
JP	<i>Juniperus x. nana</i> 'Glauca'	Blue Pfitzer Juniper	18" Spr.	GG	6
PM	<i>Pinus mugo</i> 'pumila'	Mugo Pine	18" Spr.	GG	2
TM	<i>Taxus x. media</i> 'Blue John'	Blue John Yew	18" Spr.	GG	18
DECIDUOUS SHRUBS					
AM	<i>Aronia melanocarpa</i>	Black Chokeberry	3 Gal.	CONT.	9
CA	<i>Ceanothus americanus</i>	New Jersey Tea	2 Gal.	CONT.	15
CS	<i>Cornus sanguinea</i> 'Jaspil'	Jasmi Dwarf Red Dogwood	5 Gal.	CONT.	16
DG	<i>Deutzia gracilis</i> 'Nikko'	Slender Deutzia	2 Gal.	CONT.	5
DL	<i>Dieris lonicera</i>	Dwarf Bush Honeyuckle	2 Gal.	CONT.	31
PFA	<i>Potentilla fruticosa</i> 'Abbotswood'	Abbotswood Potentilla	2 Gal.	CONT.	5
PFT	<i>Potentilla fruticosa</i> 'Tangerine'	Tangerine Potentilla	2 Gal.	CONT.	6
RA	<i>Rhus aromatica</i> 'Cora-Jov'	Gro-Low Fragrant Sumac	2 Gal.	CONT.	2
SJ	<i>Spiraea japonica</i> 'Harris Garnet'	Harris Garnet Spirea	2 Gal.	CONT.	7
SI	<i>Stephanandra incise</i> 'Citrus'	Citrus Stephanandra	2 Gal.	CONT.	3
GRASSES					
sv	<i>Panicum virgatum</i> 'Cavale Sky'	Prarie Sky Blue Switchgrass	1 Gal.	CONT.	11
sh	<i>Sporobolus heliopsis</i>	Prarie Dropseed	1 Gal.	CONT.	14
PERENNIALS					
al	<i>Aster laevis</i>	Smooth Aster	4 1/2" Pot	CONT.	8
ba	<i>Baptisia australis</i>	Blue False Indigo	4 1/2" Pot	CONT.	12
cv	<i>Claytonia villosa</i>	Hairy Golden Aster	4 1/2" Pot	CONT.	21
epb	<i>Echinacea purpurea</i> 'Bright Star'	Bright Star Purple Coneflower	4 1/2" Pot	CONT.	12
nc	<i>Coreopsis virginiana</i>	Woodland Strawberry	2 1/2" Pot	CONT.	20
hcf	<i>Hemerocallis</i> 'Chicago Fire'	Chicago Fire Daylily	4 1/2" Pot	CONT.	9
hbr	<i>Hemerocallis</i> 'Happy Returns'	Happy Returns Daylily	4 1/2" Pot	CONT.	23
nd	<i>Nepeta x. faassenii</i> 'Droppers'	Droppers Dwarf Catmint	4 1/2" Pot	CONT.	38
sm	<i>Salvia x. superba</i> 'Marcus'	Marcus Flowering Sage	4 1/2" Pot	CONT.	3
VINES AND GROUNDCOVERS					
bd	<i>Lonicera x. brownii</i> 'Droppers Scarlet'	Droppers Scarlet Honeysuckle	1 Gal.	CONT.	16
pge	<i>Parthenocissus vitacea</i> 'Engelmanni'	Engelmann's Virginia Creeper	1 Gal.	CONT.	30
vm	<i>Vinca minor</i>	Vinca	2 1/2" Pot	CONT.	18

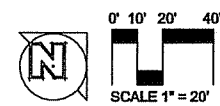
NOTES:

REQUIRED TREES PER CITY OF MADISON LANDSCAPE POINT SYSTEM HAVE LABELS IN SQUARES ON THE PLAN.

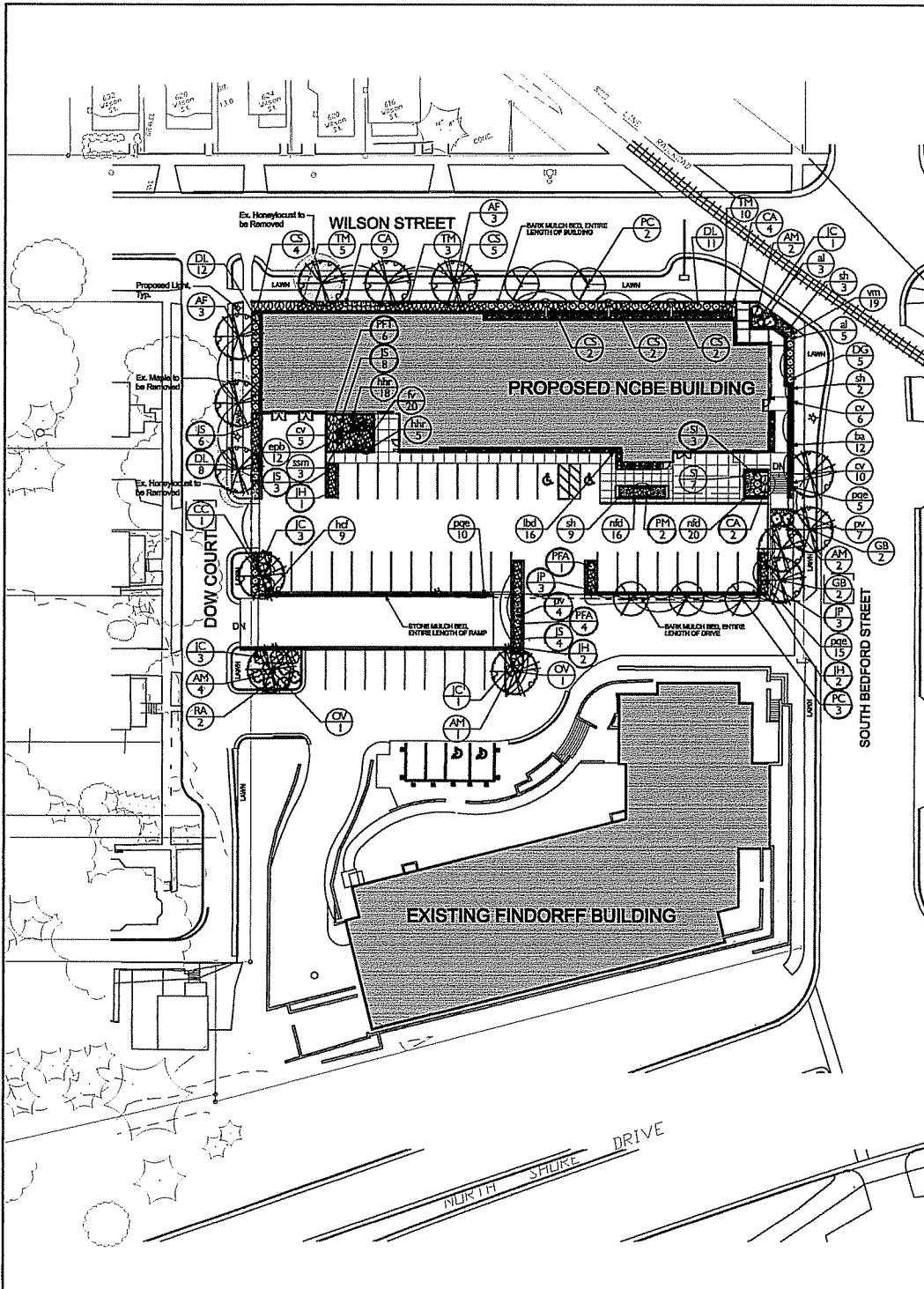
PLANTS USED TOWARD POINTS IN LANDSCAPE WORKSHEET HAVE CIRCLED LABELS ON THE PLAN.

NCBE LANDSCAPE POINTS			
3 CANOPY TREES REQUIRED FOR 21 PARKING SPACES			
32 PARKING SPACES REQUIRE 165.0 POINTS OF LANDSCAPE ELEMENTS			
LANDSCAPE ELEMENTS			
ELEMENT	QUANTITY	POINT VALUE	POINTS ACHIEVED
DECIDUOUS SHRUB	22	2	44
EVERGREEN SHRUB	34	3	102
ORNAMENTAL TREE	3	15	45
TOTAL POINTS			191

FINDORFF LANDSCAPE POINTS			
1 CANOPY TREES REQUIRED FOR 14 PARKING SPACES			
32 PARKING SPACES REQUIRE 60.0 POINTS OF LANDSCAPE ELEMENTS			
LANDSCAPE ELEMENTS			
ELEMENT	QUANTITY	POINT VALUE	POINTS ACHIEVED
CANOPY TREE 2-2 1/2" CAL.	1	30	30
DECIDUOUS SHRUB	8	2	16
EVERGREEN SHRUB	7	3	21
TOTAL POINTS			72



©2003 Potter Lawson Architects



12/22/04 MADISON PLAN COMMISSION REVIEW
Date: _____ Issuance/Revision: _____ Symbol: _____

THE NATIONAL CONFERENCE OF BAR EXAMINERS

MADISON, WISCONSIN

PLANTING PLAN

PLF Project Number: 000120022
Drawing No.: L104

Consultant:

Notes:

1. LIGHT FIXTURE TYPE "C" IS A RECESSED DOWN LIGHT INSTALLED IN A CANOPY.
2. THE AVERAGE MAINTAINED FOOTCANDLE LEVEL, AS MEASURED AT GRADE FOR THE GENERAL PARKING AND PEDESTRIAN AREAS IS 1.5 FOOTCANDLES.

DOW COURT

SOUTH BEDFORD STREET

0.2 FOOTCANDLE LINE
0.5 FOOTCANDLE LINE
1.0 FOOTCANDLE LINE

1 SITE LIGHTING PLAN (FOOT-CANDLES AT GRADE)
E101 1" = 10'



02/22/06 CITY REVIEW
Date Revision/Revisions Symbol

THE NATIONAL
CONFERENCE OF BAR
EXAMINERS

MADISON, WISCONSIN

Drawing Title
SITE LIGHTING PLAN

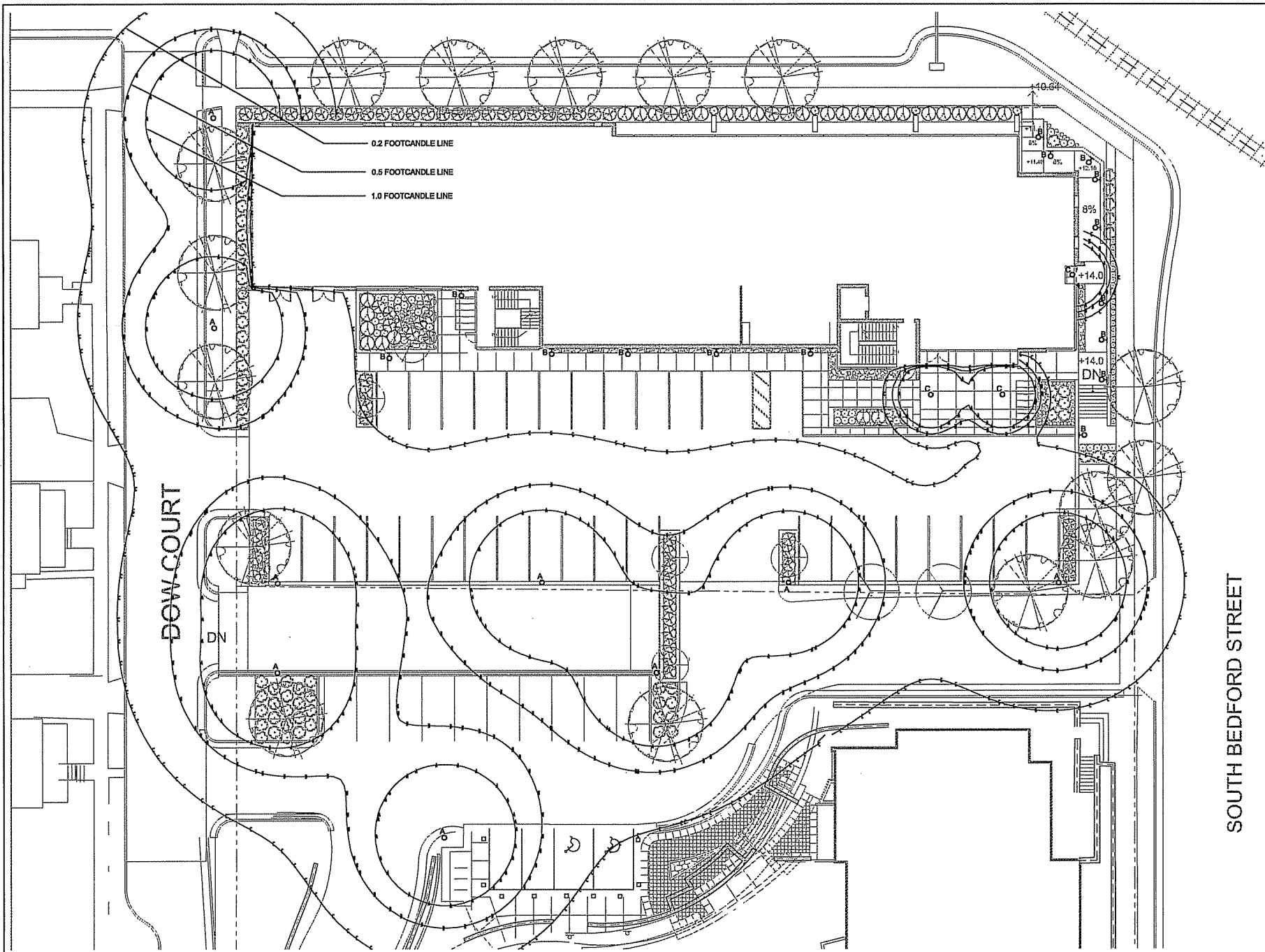
PL Project Number
2003-20102

Drawing No.

E101

Consultants:

Notes:
 1. LIGHT FIXTURE TYPE "C" IS A RECESSED DOWN LIGHT INSTALLED IN A CANOPY.



1 SITE LIGHTING PLAN (FOOT-CANDLES AT 4' AFG)
 1" = 10'



02/22/04 CITY REVIEW	Date	Issuance/Revisions	Symbol

THE NATIONAL
 CONFERENCE OF BAR
 EXAMINERS

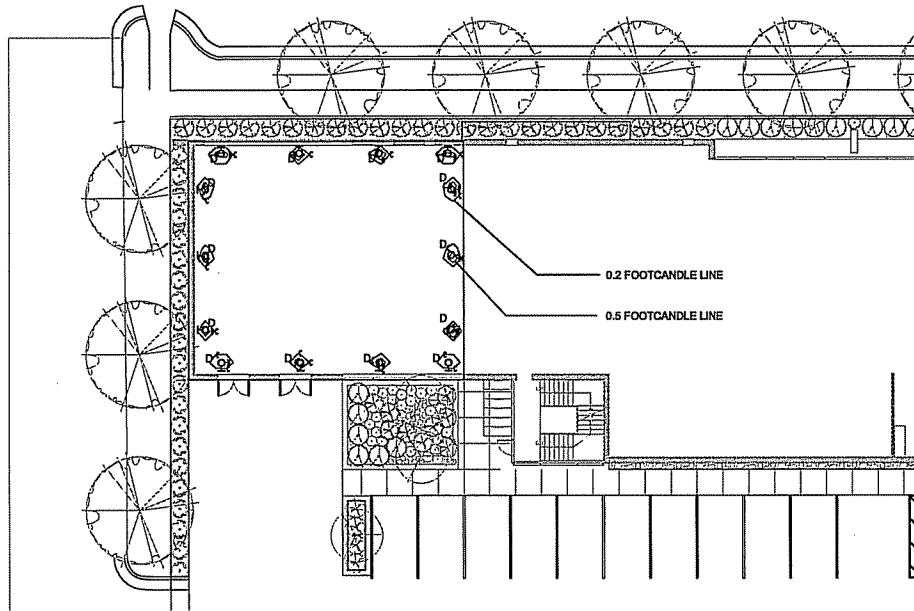
MADISON, WISCONSIN

Drawing Title
 SITE LIGHTING PLAN

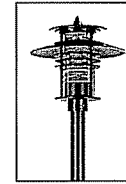
PL Project Number: 2003.02.012	Drawing No. E102
Drawn By: JJO	

Consultant:

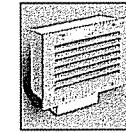
Notes:



4 GREEN ROOF LIGHTING PLAN (FOOT-CANDLES AT THE ROOF)
E103 1" = 10'



1 LIGHT FIXTURE TYPE "A"
E103 NTS



2 LIGHT FIXTURE TYPE "B"
E103 NTS



3 LIGHT FIXTURE TYPE "D"
E103 NTS

LIGHT FIXTURE SCHEDULE								
LAMP								
TYPE	TYPE	QTY	WATTAGE	DESCRIPTION	MANUFACTURER	CATALOG NO.	VOLTAGE	DESCRIPTION
A	ML	1	175	MINICFL/SLM	PHOENIX	EP-PT-175W-PT-B-Q-240-220V	220V	RECESSED FIXTURE WITH INTERNAL LENSING, CLEAR LENS AND SHIELD, MOUNTED ON 1/2" TRIPLE POLE, BLACK
B	ML	1	50	MINICFL/SLM	OSL	180-3150	120V	1" STEP LIGHT WITH CAST ALUMINUM LENSER
C	ML	1	20	MINICFL/SLM	OMEGA	OM-20017-020FL-FL-120	120V	RECESSED DOWN LIGHT
D	ML	1	12	12V 12	LIANDE	1203	12V	LOW VOLTAGE STEP LIGHT

22/22/06 CITY REVIEW
Date Issuance/Revisions Symbol

**THE NATIONAL
CONFERENCE OF BAR
EXAMINERS**

MADISON, WISCONSIN

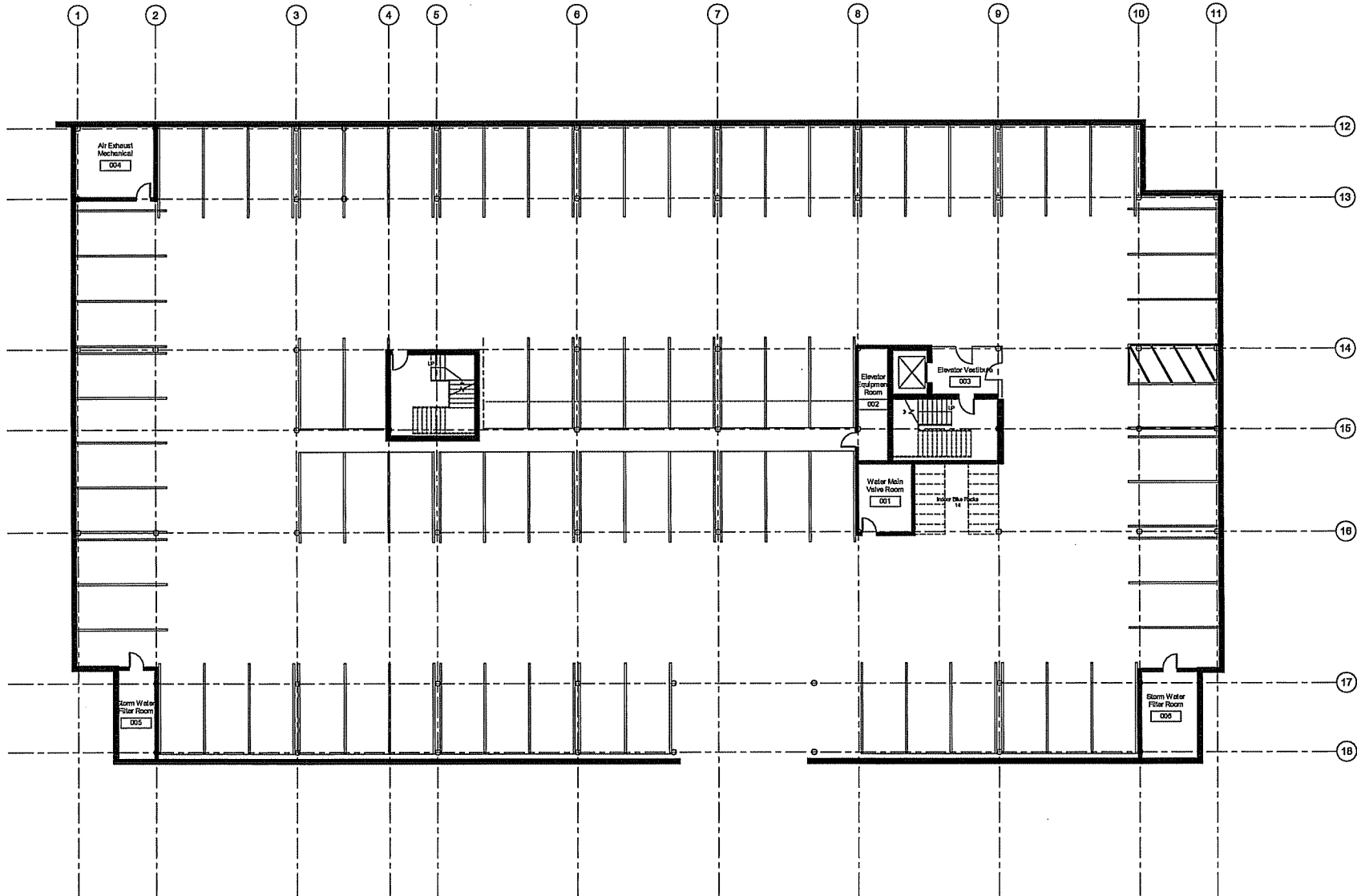
Drawing Title
**GREEN ROOF LIGHTING
PLAN, FIXTURE PICTURES
AND LIGHTING SCHEDULE**

PL Project Number
2003.020.022
Drawing No.
Green by
JVO

E103

Consultants:

Notes:



① Lower Level Parking
1/8" = 1'-0"

Date	Issued/Revised	By Whom

National Conference
of Bar Examiners
NCBE

Wilson and South Bedford St.
Madison, Wisconsin

Drawing No.

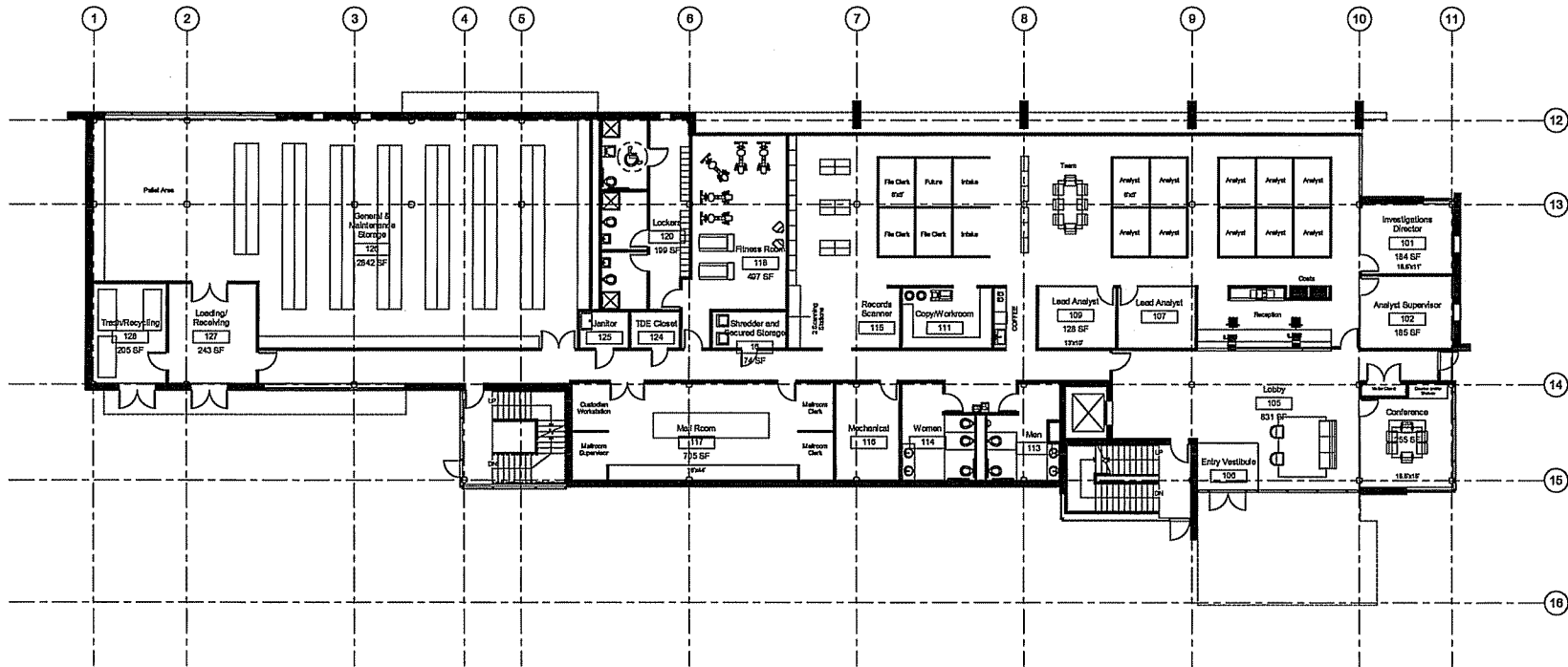
Lower Level Parking

Project Number	2003.20
Sheet No.	W14

A101

Consultants:

Notes:



① First Floor
1/8" = 1'-0"

Date	Revision/Revisions	Symbol

**National Conference
of Bar Examiners**
NCBE

Wilson and South Bedford St.
Madison, Wisconsin

Project No.

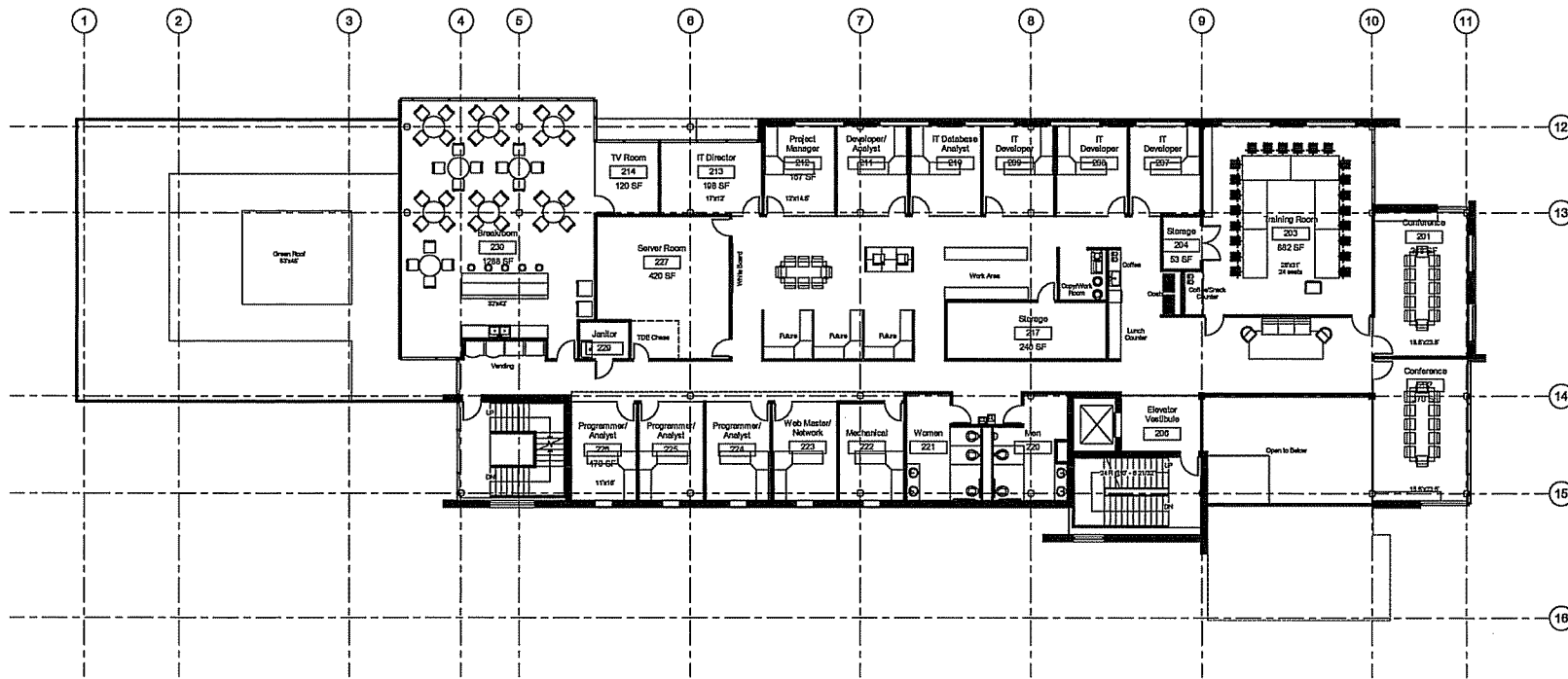
First Floor

Project Number
2003.20
Drawn By
W64

Sheet No.
A102

Consultants:

Notes:



1 Second Floor
1/8" = 1'-0"

Date	Revised/Revised By	By

National Conference
of Bar Examiners
NCBE

Wilson and South Bedford St.
Madison, Wisconsin

Second Floor

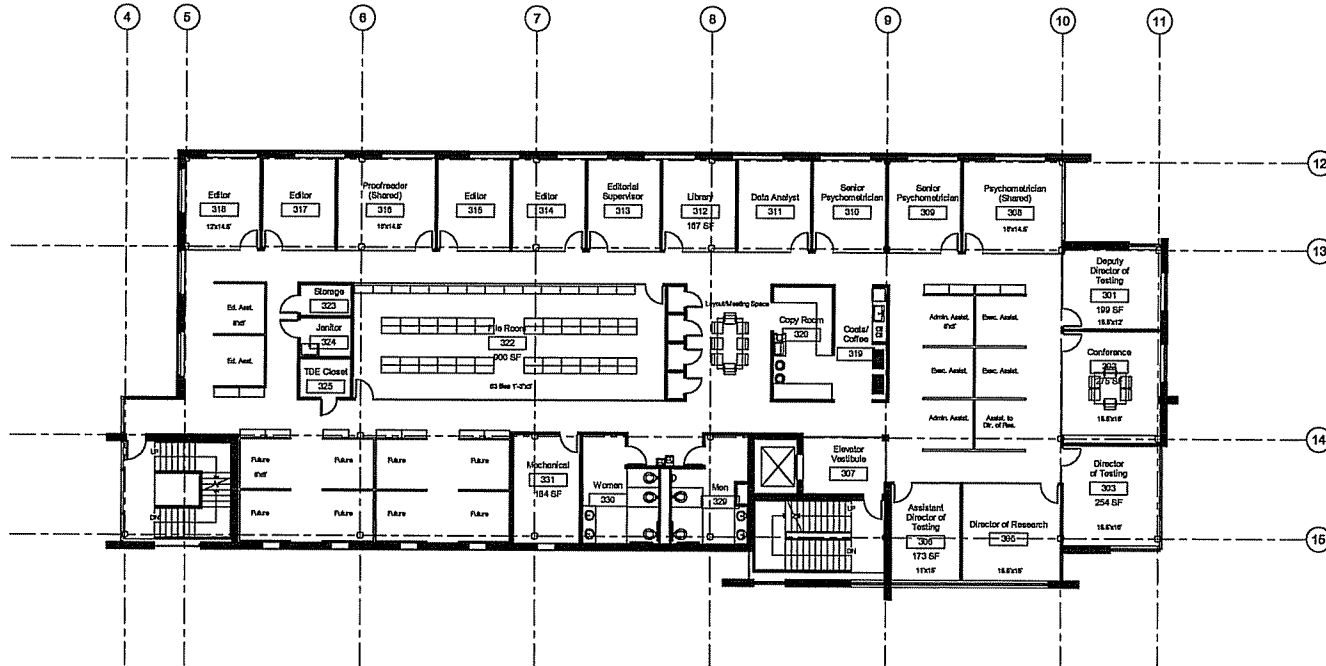
Project Number
2003.20

Project Name
V14

A103

Consultants:

Notes:



① Third Floor
1/8" = 1'-0"

Date	03.20.12/Rev-0010	5/11/10
------	-------------------	---------

**National Conference
of Bar Examiners
NCBE**

Wilson and South Bedford St.
Madison, Wisconsin

Drawing Title

Third Floor

Project Number
2003.20

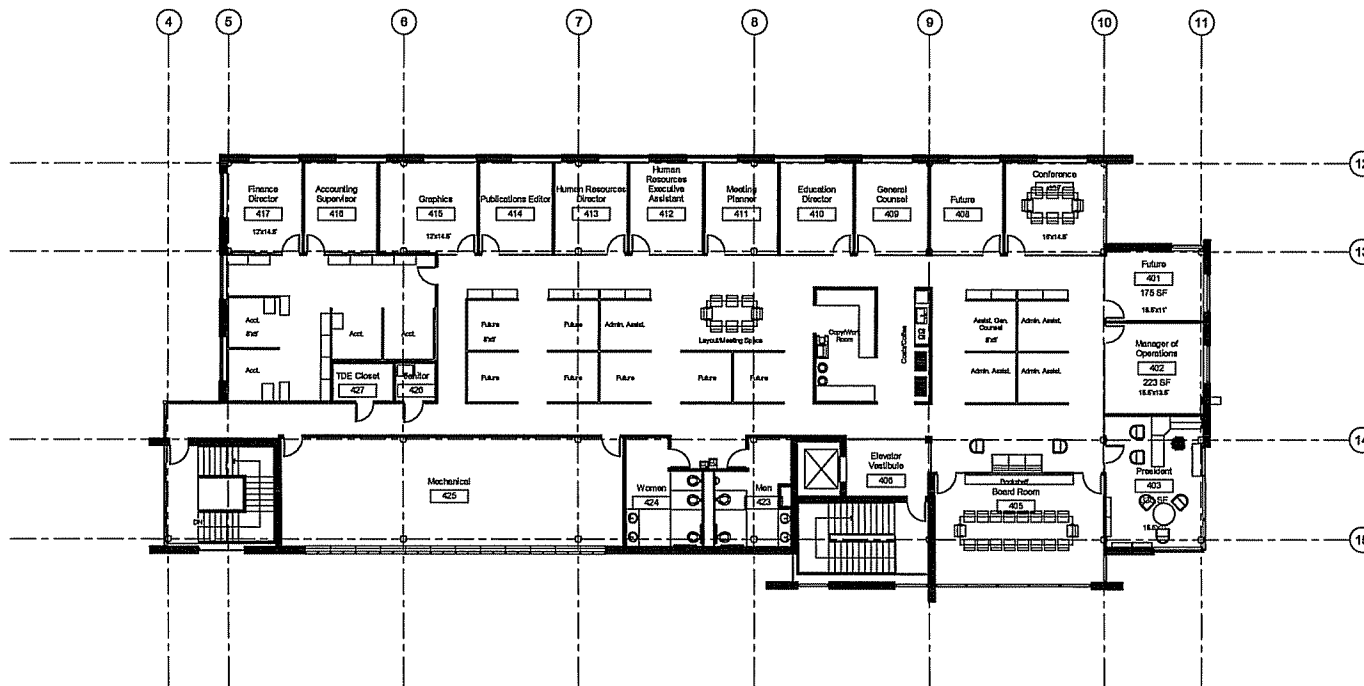
Sheet No.
M-4

Drawing No.

A104

Consultants:

Notes:



① Fourth Floor
1/8" = 1'-0"

Date	Revisions/Revisions	By/No

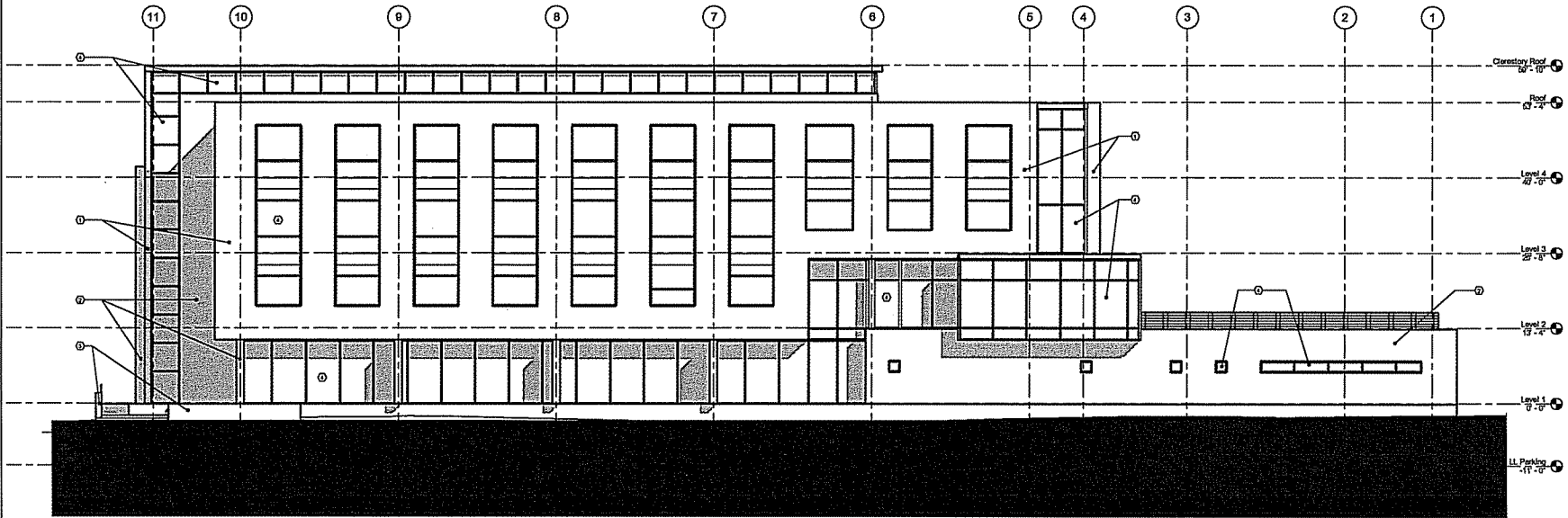
National Conference of Bar Examiners
NCBE
Wilson and South Bedford St.
Madison, Wisconsin

Fourth Floor

Consultants:

Notes:

- ① BRICK
- ② CAST STONE
- ③ KAGODA STONE
- ④ CLADDING WITH VERTICAL COLLORED FINISH
- ⑤ TRIP COPPER, WOOD, OR METAL PANELS
- ⑥ LIGHTING



① North Elevation
1/8" = 1'-0"

Date	Revisions/Revisions	By whom

National Conference
of Bar Examiners
NCBE

Wilson and South Bedford St.
Madison, Wisconsin

Drawn by:

North Elevation

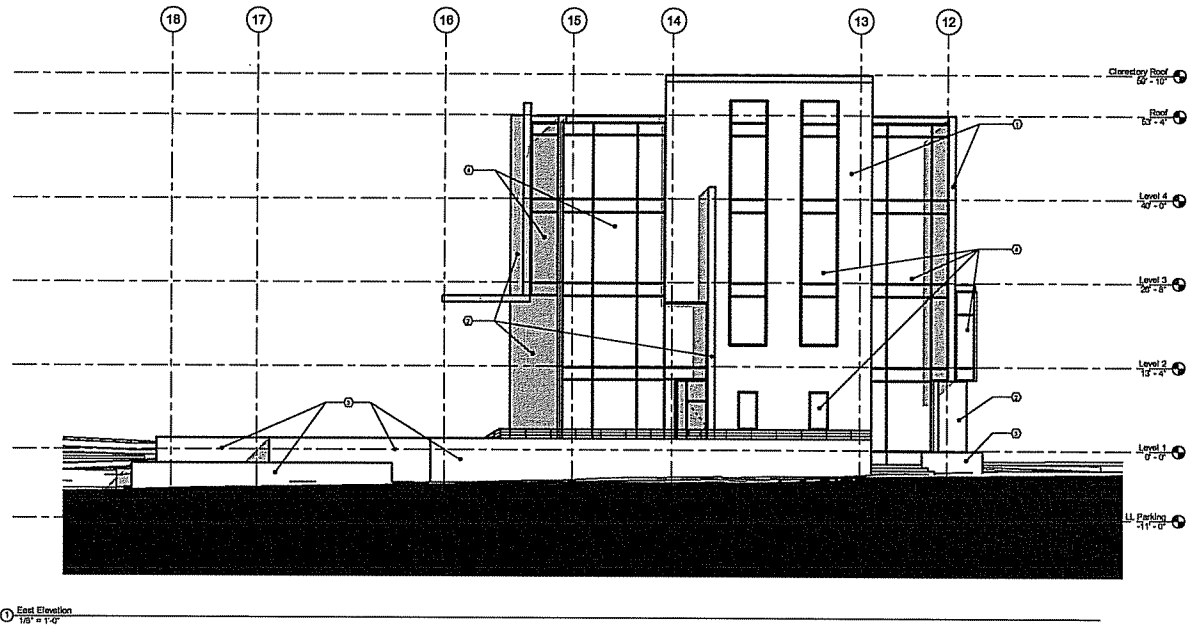
Project Number
2203.2D
Sheet No.
W44

A201

Consultants:

Notes:

- ① BRICK
- ② CAST STONE
- ③ MASONRY STONE
- ④ CLADDING WITH VERTICAL COLONIAL PANELING
- ⑤ TRIP, COPPER, WOOD, OR METAL PANELS
- ⑥ LOUVERES



Date	Revisions	Symbol

National Conference of Bar Examiners
NCBE

Wilson and South Bedford St.
Madison, Wisconsin

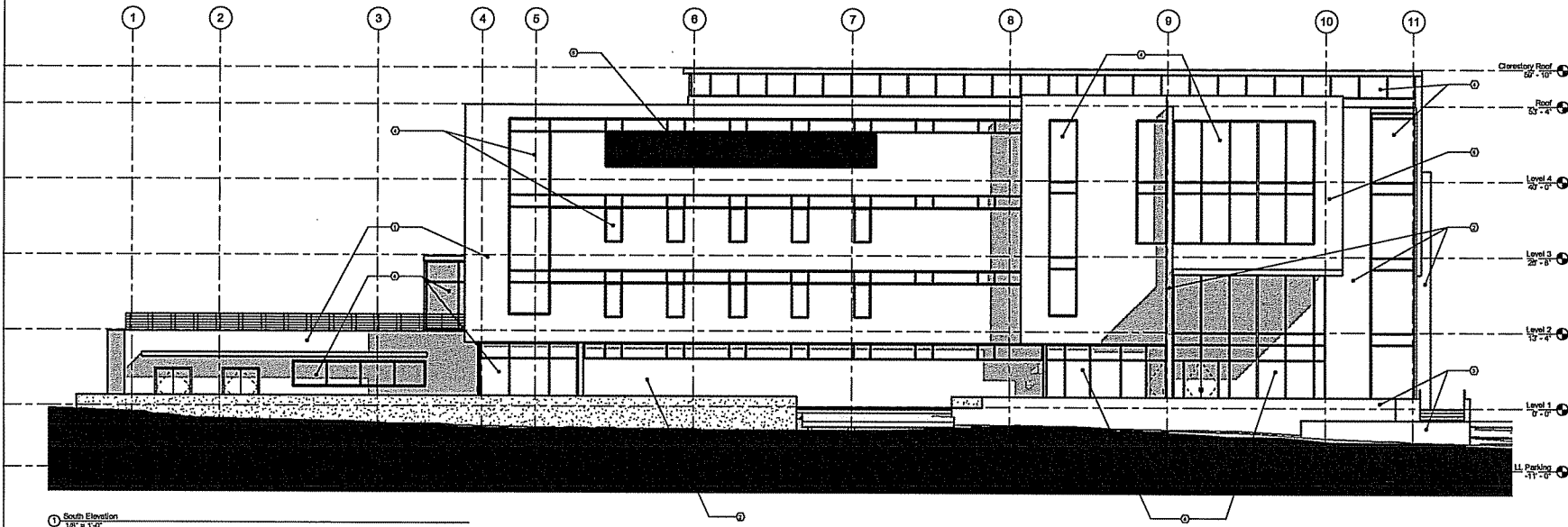
Drawing for:
East Elevation

Project Number: 2323.23 Date: 10/10/03	Drawing No: A202
---	----------------------------

Consultants:

Notes:

- ① BRICK
- ② CAST STONE
- ③ MADOTA STONE
- ④ GLAZED WITH SPOKES
COLORED FRAMING
- ⑤ TILED COPPER WOOD,
DRUMMETAL PANELS
- ⑥ Louvers



Clerestory Roof 59'-10"
 Roof 45'-4"
 Level 4 22'-0"
 Level 3 21'-3"
 Level 2 15'-4"
 Level 1 0'-0"
 LL Parking 31'-0"

① South Elevation
1/8" = 1'-0"

Date	DESCRIPTION/REVISIONS	BY/APP

**National Conference
of Bar Examiners
NCBE**

Wilson and South Bedford St.
Madison, Wisconsin

Drawing No.

South Elevation

11. Project Number
 2003.20
 Date: 11/14/04

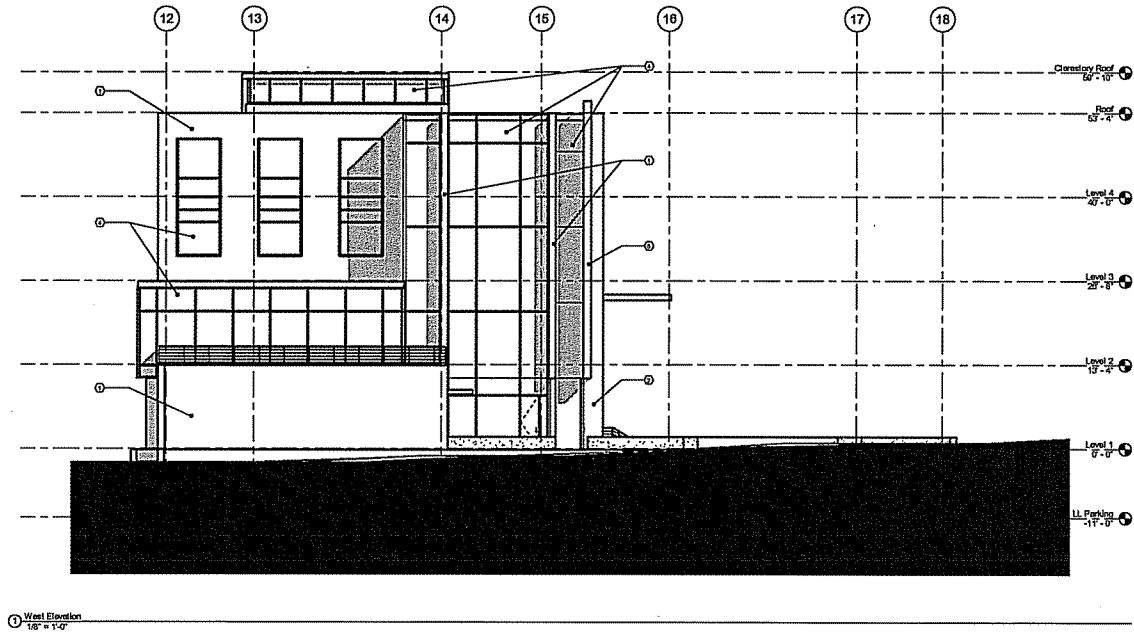
Drawing No.
 104

A203

Contents:

Notes:

- ① BRICK
- ② CAST STONE
- ③ MASSIVE STONE
- ④ BRASS WITH BRASS COLORED FINISH
- ⑤ TILED COPPER WOOD OPERABLE PANELS
- ⑥ LOUVERS



① West Elevation
1/8" = 1'-0"

Date	Revisions/Revisions	By

**National Conference
of Bar Examiners**
NCBE

Wilson and South Bedford St.
Madison, Wisconsin

Project Name		Drawing No.
West Elevation		
Project Number	2003.20	A204
Drawn By	WCL	