

1 ELEVATION ALONG IOTA COURT
A-2.1 1/8" = 1'-0"



2 ELEVATION ALONG HENRY STREET
A-2.1 1/8" = 1'-0"

Revisions
 Issued For Preliminary Bidding: March 14, 2013
 Contract Set: July 1, 2013
 Issued for Plan Review: August 2, 2013
 Re-issued for Plan Review: August 14, 2013
 Issued for Construction: September 3, 2013
 Minor Alteration: January 13, 2014

Project Title
The Waterfront Apartments

633 N. Henry Street
 Madison, WI
 Drawing Title
Elevations

Project No. Drawing No.

0804 A-2.1

This document contains confidential or proprietary information of Knothe & Bruce Architects. Neither the document nor the information herein is to be reproduced, distributed, used or included, either in whole or in part, except as specifically authorized by Knothe & Bruce Architects. Knothe & Bruce Architects is a Limited Liability Company of Wisconsin.



1 **SOUTHEAST ELEVATION**
A-2.2 1/8" = 1'-0"



2 **NORTHEAST ELEVATION**
A-2.2 1/8" = 1'-0"

Revisions
 Issued For Preliminary Bidding: March 14, 2013
 Contract Set: July 1, 2013
 Issued for Plan Review: August 2, 2013
 Re-issued for Plan Review: August 14, 2013
 Issued for Construction: September 3, 2013
 Minor Alteration: January 13, 2014

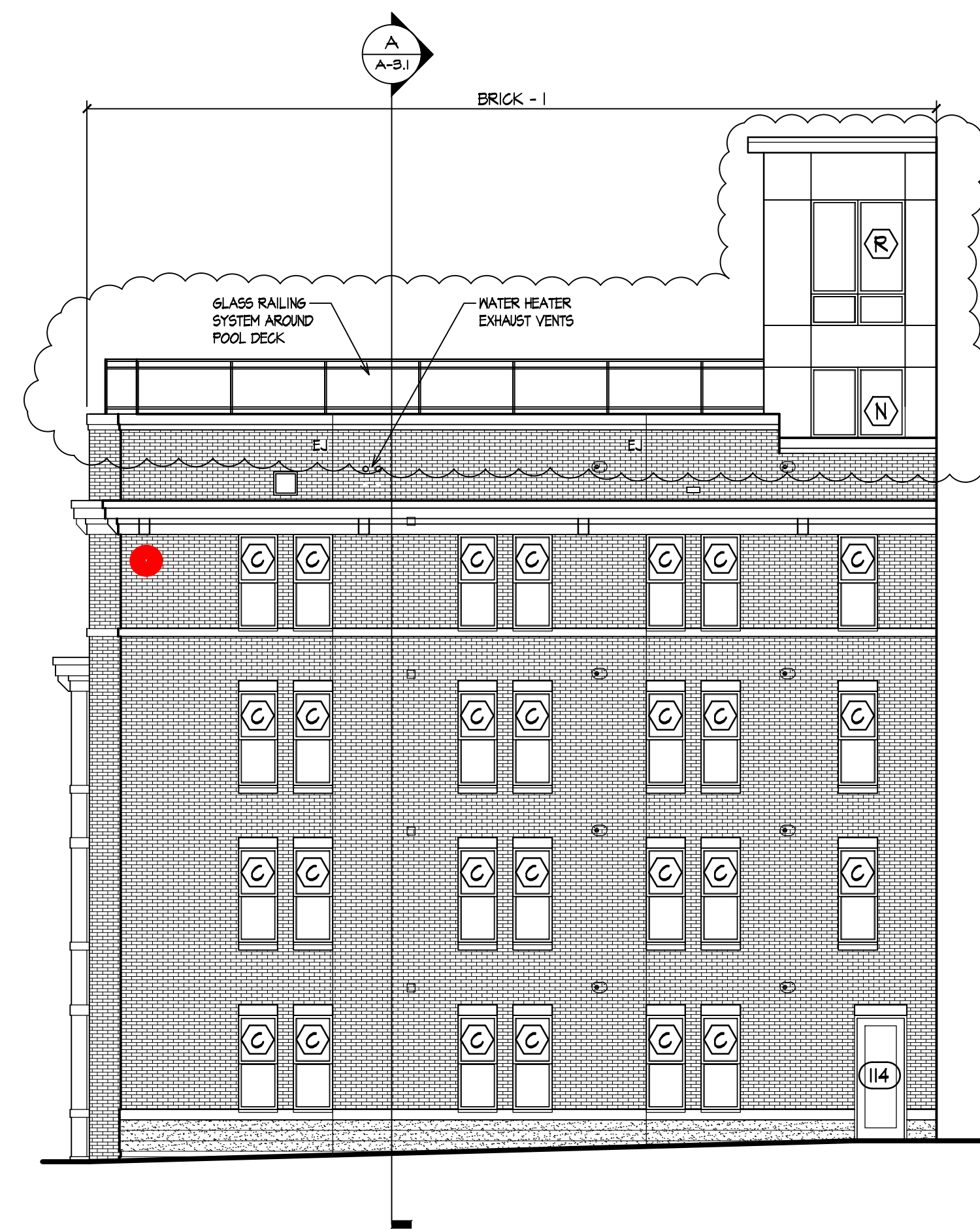
Project Title
**The Waterfront
 Apartments**

633 N. Henry Street
 Madison, WI
 Drawing Title
Elevations

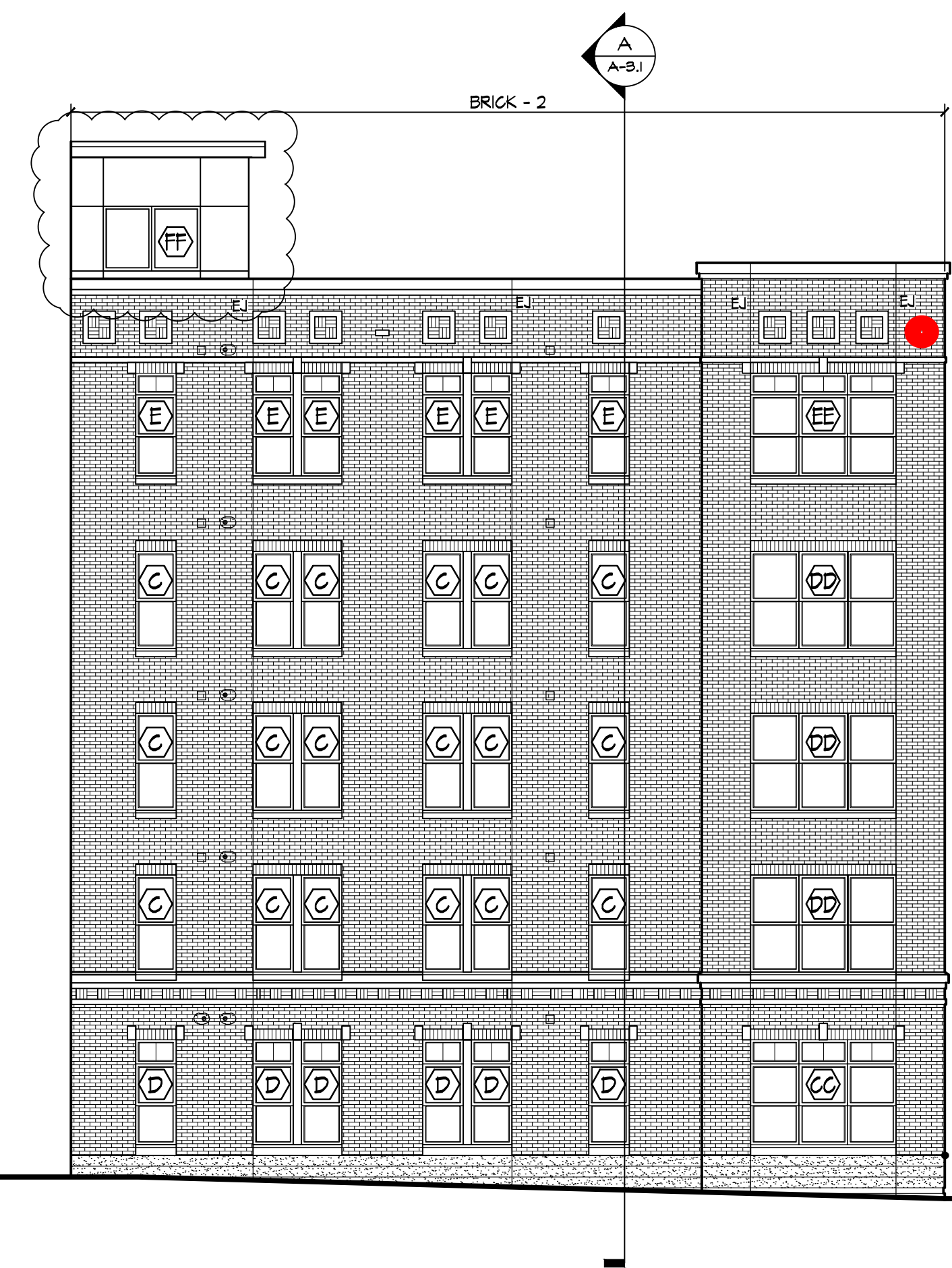
Project No. Drawing No.

0804 A-2.2

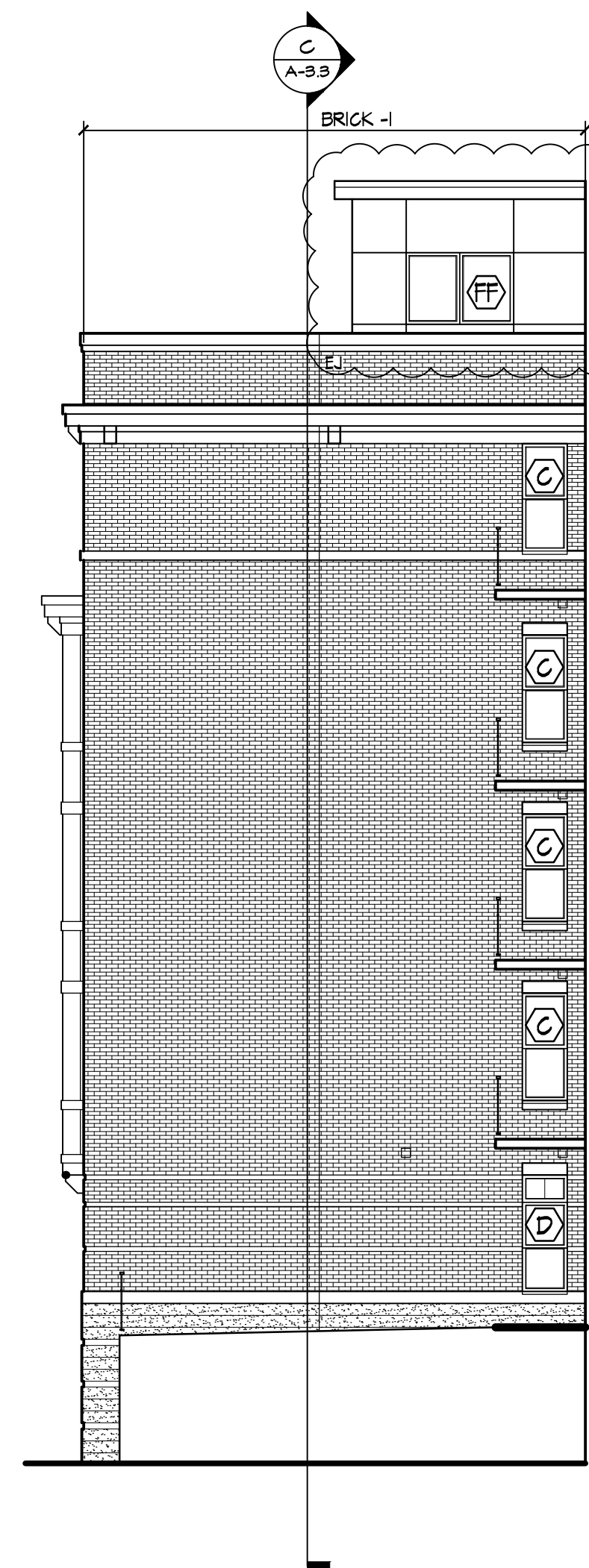
This document contains confidential or proprietary information of Knothe & Bruce Architects. Neither the document nor the information herein is to be reproduced, distributed, used or included, either in whole or in part, except as specifically authorized by Knothe & Bruce Architects. Knothe & Bruce Architects is a Limited Liability Company of Wisconsin.



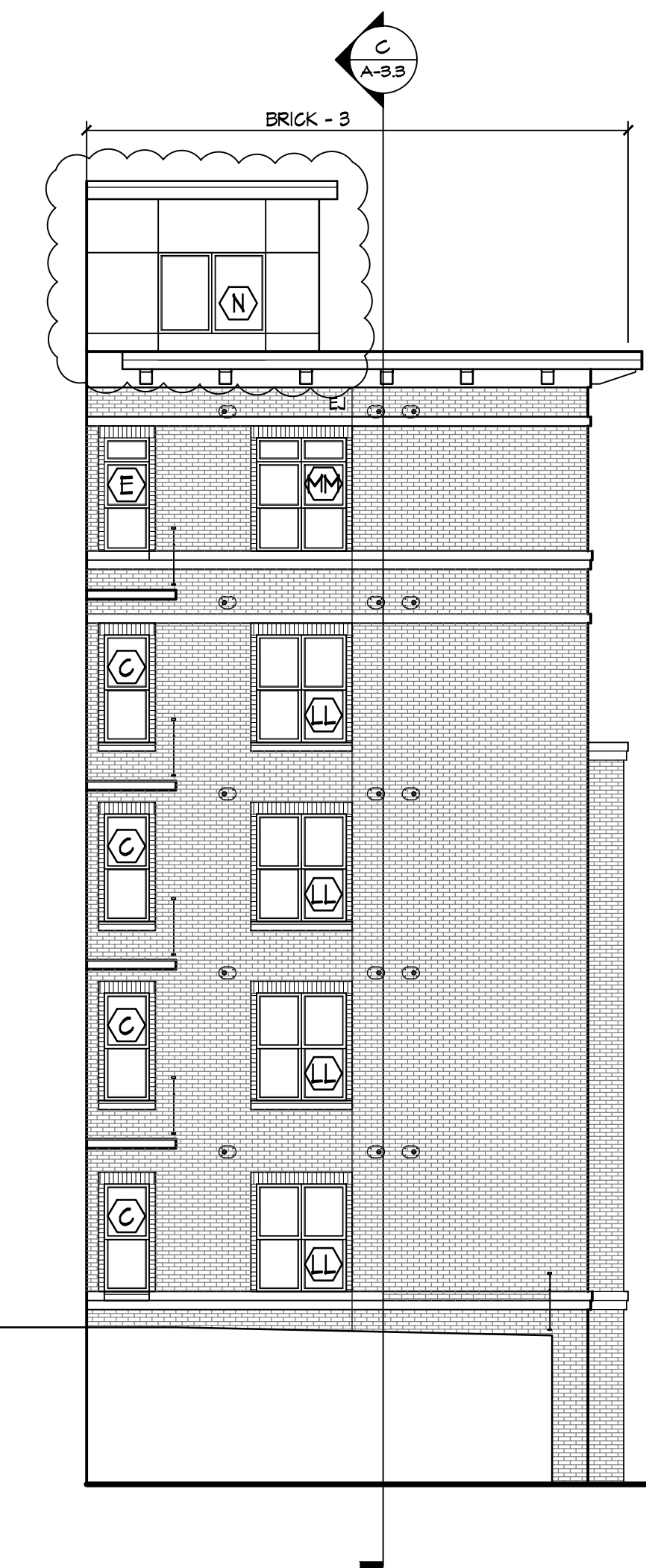
1 SOUTH PLAZA ELEVATIONS
A-2.3 1/8" = 1'-0"



2 SOUTH PLAZA ELEVATIONS
A-2.3 1/8" = 1'-0"



3 NORTH PLAZA ELEVATIONS
A-2.3 1/8" = 1'-0"



4 NORTH PLAZA ELEVATIONS
A-2.3 1/8" = 1'-0"

EXTERIOR MATERIAL SCHEDULE

BUILDING MATERIAL	MATERIAL	MANUFACTURER	COLOR
COMPOSITE BOARD AND TRIM	COMPOSITE	SMART SIDE	TBD
METAL PANEL	METAL	GMS, COATED METALS GROUP	TBD
WINDOW TRIM	COMPOSITE	SMART SIDE	TBD
WINDOWS	FIBERGLASS	MARVIN ALL ULTREX	TBD
BRICK VENEER #1	MASONRY	TBD	TBD
BRICK VENEER #2	MASONRY	TBD	TBD
BRICK VENEER #3	MASONRY	TBD	TBD
MORTAR			COLORED TO MATCH MASONRY
FLASHING	STEEL	PAC GLAD	MATCH TO ADJACENT MATERIAL
PRECAST SILL	PRECAST	EDWARDS	TBD
DECK TRIM	STEEL CHANNEL		TBD
RAILING	ALUMINUM	WILLIAMS	BLACK
ENTRANCE DOORS	ALUMINUM	T.B.D.	TBD
BASEMENT WINDOWS	ALUMINUM	T.B.D.	TBD
GARAGE MAN DOOR	STEEL	T.B.D.	TBD
OVERHEAD GARAGE DOOR	ALUMINUM	T.B.D.	TBD

Revisions

Issued For Preliminary Bidding: March 14, 2013
Contract Set: July 1, 2013
Issued for Plan Review: August 2, 2013
Re-issued for Plan Review: August 14, 2013
Issued for Construction: September 3, 2013
Minor Alteration: January 13, 2014

Project Title

The Waterfront
Apartments

633 N. Henry Street
Madison, WI

Drawing Title
Elevations

Project No.

0804

Drawing No.

A-2.3



The Waterfront
Exterior Lighting
July 30, 2014

