

BRIGHTSTAR ASSISTED LIVING

MADISON, WISCONSIN

APRIL 4, 2012 - MADISON PLAN COMMISSION SUBMITTAL



VICINITY MAP
SCALE: NOT TO SCALE



OWNER:

BrightStar Group Holdings
1125 Tri-State Parkway, Suite 700
Gurnee, IL 60031
Ph: (847) 683,2007
Jayson Pearl

CONSULTANTS:

ARCHITECT:
Lantz-Boggio Architects, P.C.
5550 DTC Parkway, Suite 200
Englewood, CO 80111
Ph: (303) 773,0436
Fax: (303) 773,8709
Jeff Shera

MECHANICAL/PLUMBING ENGINEER:
Given & Associates, INC.
735 S. Xenon Ct., Suite 201
Lakewood, CO 80228
Ph: (303) 716,1270
Fax: (303) 716,1272
Jeff Given

STRUCTURAL ENGINEER:
Jrsa Hedrick & Associates
7000 East Bellevue Avenue
Englewood, CO 80111
Ph: (303) 838,1963
Steve Jrsa

CIVIL ENGINEER:
Lynch & Associates
5482 Westridge Drive
New Berlin, WI 53151
Ph: (262) 402,5040
Timothy Lynch

ELECTRICAL ENGINEER:
JCAA Consulting Engineers LLC
13772 Denver West Parkway, Suite 200
Lakewood, CO 80401
Ph: (303) 985,2260
Fax: (303) 987,2304
Jerry Alber

LANDSCAPE ARCHITECT:
The Bruce Company
2830 Parmenter Street
P.O. Box 620330
Middleton, WI 53562
Ph: (303) 836,7041
Dana Peltt

SHEET INDEX

GENERAL:	
G-000	COVER SHEET, DESIGN TEAM, SHEET INDEX, GENERAL NOTES, SYMBOLS LEGEND, APPLICABLE CODES, PROJECT SCOPE, VICINITY MAP
CIVIL:	
C1	TITLE SHEET, INDEX, VICINITY MAP, SITE MAP
C2	SITE DETAILS
C3	SITE DETAILS
C4	SITE DETAILS
C5	SITE PLAN
C6	UTILITY PLAN
C7	GRADING AND EROSION PLAN
LANDSCAPE:	
L1	LANDSCAPE PLAN
ARCHITECTURAL:	
A-201	BASEMENT PLAN
A-210	FIRST FLOOR PLAN
A-220	SECOND FLOOR PLAN
A-401	EXTERIOR ELEVATIONS
ELECTRICAL:	
E-1	SITE LIGHTING PHOTOMETRIC PLAN AND DETAIL
E-2	LUMINAIRE SPECIFICATIONS

DWELLING UNIT DATA

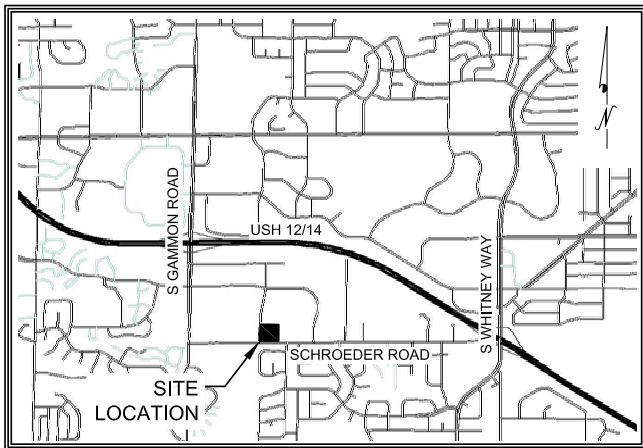
	STUDIO UNIT	1 BEDROOM UNIT	2 BEDROOM UNIT	TOTAL
1ST FLOOR	9	3	4	16
2ND FLOOR	8	4	2	14
TOTAL	17	7	6	30

PROJECT DATA

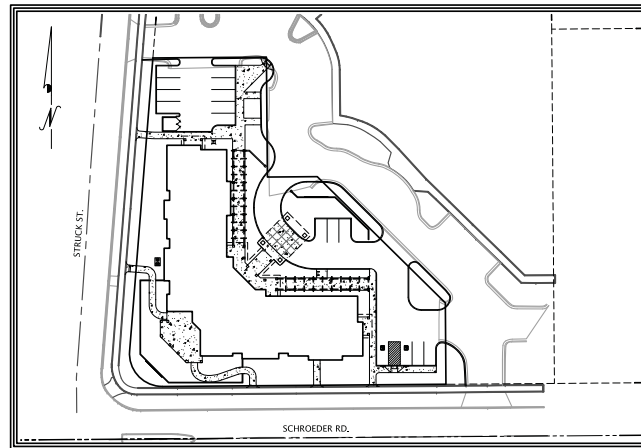
SITE AREA:	0.9412 ACRES
BUILDING AREA:	BASEMENT: 2,905 S.F.
	1ST FLOOR: 11,746 S.F.
	2ND FLOOR: 9,627 S.F.
	TOTAL: 24,278 S.F.
PARKING PROVIDED:	14 STANDARD AND 2 HANDICAP SPACES
BICYCLE PARKING:	2 SPACES

NOTICE: These documents are instruments of professional service, and information contained therein is incomplete unless used in conjunction with Lantz-Boggio's interpretations, decisions, observations and administrations. Use or reproduction of these documents in whole or in part without Lantz-Boggio's consent is in violation of common law, copyrights, statutory and other reserved rights. Refer to Act 17 U.S.C., par. 511 (1991), which preempts state and local public records act. Refer to Act 17 U.S.C., par 301 (1991).

SITE IMPROVEMENT PLANS FOR BRIGHTSTAR ASSISTED LIVING MADISON, WISCONSIN



VICINITY MAP



SITE MAP

OWNER:
BRIGHTSTAR GROUP HOLDINGS
REPRESENTATIVE: JAYSON PEARL
1125 TRI-STATE PKWY, SUITE 700
GURNEE, IL 60031

ENGINEER:
LYNCH & ASSOCIATES -
ENGINEERING CONSULTANTS, LLC
5482 S. WESTRIDGE DRIVE
NEW BERLIN, WI 53151


Lantz-Boggio
 Architects, P.C.
 5650 DTC Pkwy | Suite 200 | Englewood | CO 80111

PRELIMINARY



LYNCH & ASSOCIATES
ENGINEERING CONSULTANTS, LLC

5482 S. WESTRIDGE DRIVE, NEW BERLIN, WI 53151
(262) 402-5040

SITE IMPROVEMENT PLANS
FOR
SENIOR LIVING FACILITY

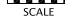
SHEET INDEX

C1	TITLE SHEET, SHEET INDEX, VICINITY AND SITE MAP
C2	DETAIL SHEET
C3	DETAIL SHEET
C4	DETAIL SHEET
C5	SITE PLAN
C6	UTILITY PLAN
C7	GRADING & EROSION CONTROL PLAN



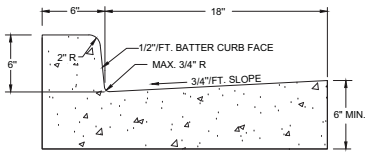
TO OBTAIN LOCATION OF PARTICIPANTS UNDERGROUND FACILITIES BEFORE YOU DIG IN WISCONSIN
 CALL DIGGERS HOTLINE TOLL FREE
 800-242-8511
 414-259-1181 MILWAUKEE METRO (TDD: 800-542-2289)
www.diggershotline.com
 W.S. STATUTE 182.0175 (1974)
 REQUIRES MIN. OF 3 WORK DAYS NOTICE BEFORE YOU EXCAVATE.

CAUTION NOTICE TO CONTRACTOR
 THE CONTRACTOR IS SPECIFICALLY CAUTIONED THAT THE LOCATION AND/OR ELEVATION OF EXISTING UTILITIES AS SHOWN ON THESE PLANS IS BASED ON RECORDS OF VARIOUS UTILITY COMPANIES AND WHERE POSSIBLE, MEASUREMENTS TAKEN IN THE FIELD. THE INFORMATION IS NOT TO BE RELIED ON AS BEING EXACT OR COMPLETE. THE CONTRACTOR MUST CALL THE APPROPRIATE UTILITY COMPANY AT LEAST 48 HOURS BEFORE ANY EXCAVATION TO REQUEST EXACT FIELD LOCATION OF UTILITIES. IT SHALL BE THE RESPONSIBILITY OF THE CONTRACTOR TO RELOCATE ALL EXISTING UTILITIES WHICH CONFLICT WITH THE PROPOSED IMPROVEMENTS SHOWN ON THE PLANS.

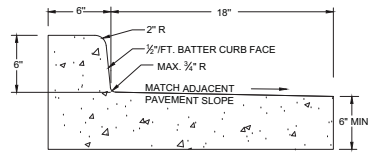
	INITIALS	DATE	0	NTS
DESIGNED	TCL	03/29/12	 SCALE	PROJECT NO. 12-003
DRAWN	LTK	03/29/12		
CHECKED	TCL	03/29/12		

NO.	REVISIONS	BY	DATE
1	REVISIONS PER ARCHITECT	LTK	04/03/12

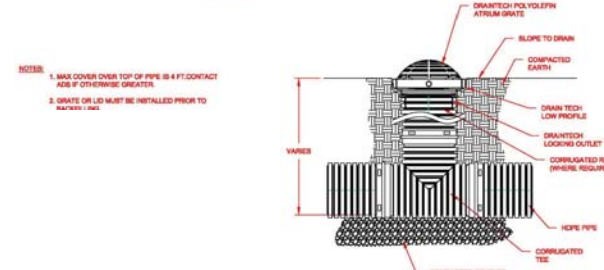
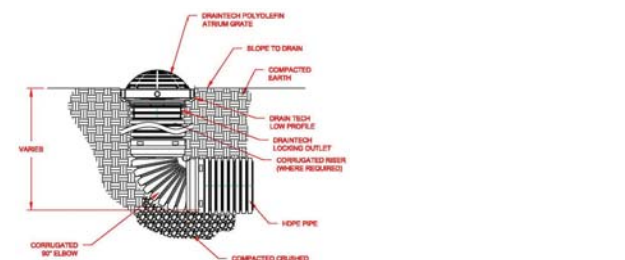
TITLE SHEET, INDEX VICINITY MAP SITE MAP	SHEET NO. 1 OF 7
---	-----------------------------------



24" CONCRETE CURB AND GUTTER ①
C2



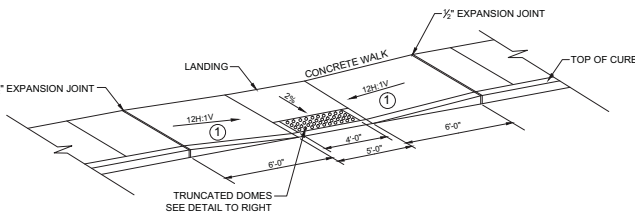
24" REVERSE PAN CONCRETE CURB AND GUTTER ②
C2



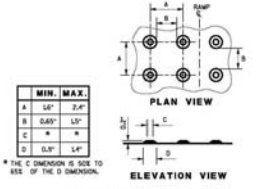
NOTES:
 1. MAX COVER OVER TOP OF PIPE IS 4 FT CONTACT ASB IF OTHERWISE GREATER.
 2. GRATE OR LID MUST BE INSTALLED PRIOR TO BACKFILL.

12" A.D.S. YARD DRAIN ②
C2

GENERAL NOTES:
 SIDEWALK CROSS SLOPE SHALL NOT EXCEED 2%.
 SLOPE SIDEWALK TOWARD LANDING AS SHOWN WHERE THERE IS NO TERRACE OR WHERE THE TERRACE WIDTH IS LESS THAN 6 FEET WIDE.



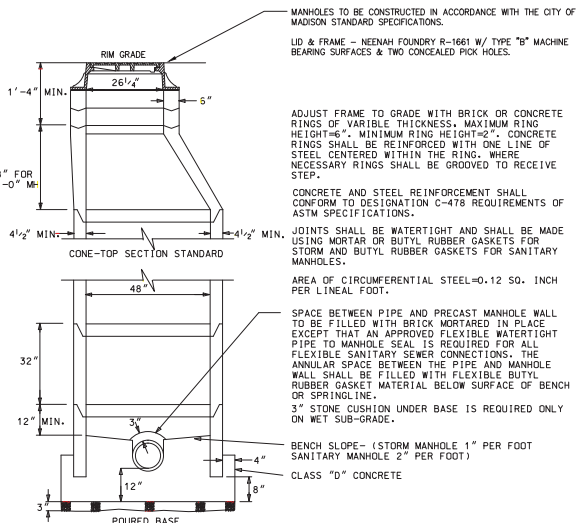
HANDICAP RAMP DETAIL ④
C2



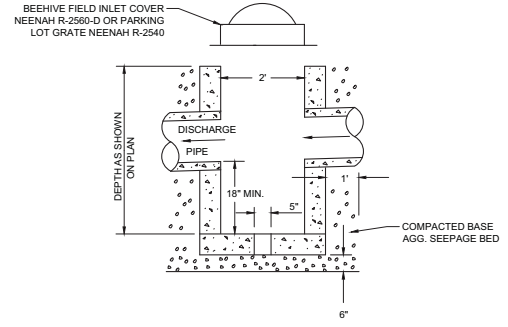
TRUNCATED DOMES DETECTABLE WARNING PATTERN DETAIL
PLAN VIEW DETECTABLE WARNING FIELD (TYPICAL)

	MIN.	MAX.
A	1.6"	2.4"
B	0.85"	1.3"
C	"	"
D	0.8"	1.4"

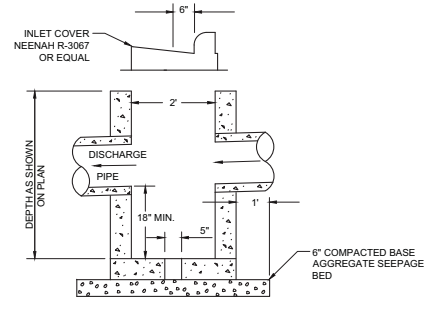
* THE C DIMENSION IS SEE TO SEE OF THE D DIMENSION.



PRECAST MANHOLE DETAIL ④
C2



FIELD INLET DETAIL ⑤
C2



CATCH BASIN DETAIL ⑥
C2

Lantz-Boggio Architects, P.C.
 5650 DTC Pkwy., Suite 200 | Englewood | CO 80111
 Ph: 303.773.0436 | Fax: 303.773.6709

BrightStar Assisted Living
 Madison | Wisconsin

Owner:
 BRIGHTSTAR GROUP HOLDINGS
 1125 19th-STATE PARKWAY, SUITE 700
 GURNEE, IL 60031
 P: 847.693.2007
 JAYSON PEARL

Structural Engineer:
 JRSA HEDRICK & ASSOCIATES
 7000 EAST BELLEVUE AVENUE
 ENGLEWOOD, CO 80111
 P: 303.859.1963
 STEVE JRSA

Electrical Engineer:
 JCAA CONSULTING ENGINEERS LLC
 13772 DENVER WEST PARKWAY, SUITE 200
 LAKEWOOD, CO 80401
 P: 303.985.3260
 F: 303.987.2304
 JERRY ALBER

Mechanical/Plumbing Engineer:
 GIVEN & ASSOCIATES, INC.
 735 S. XENON CT., SUITE 201
 LAKEWOOD, CO 80228
 P: 303.716.1270
 F: 303.716.1272
 JEFF GIVEN

Civil Engineer:
 LYNCH & ASSOCIATES
 5482 WESTRIDGE DRIVE
 NEW BERLIN, WI 53151
 P: 262.402.5040
 TIMOTHY LYNCH

Landscape Architect:
 THE BRUCE COMPANY
 2830 PARKMETER STREET
 P.O. BOX 620330
 MIDDLETON, WI 53562
 P: 608.836.7041
 DANA PETIT

Issued For:

Item	Date	Description
1.	04.04.2012	Planning Department Submittal

Key Plan:

LBA Project Number: 2011-46
 Date: APRIL 4, 2012

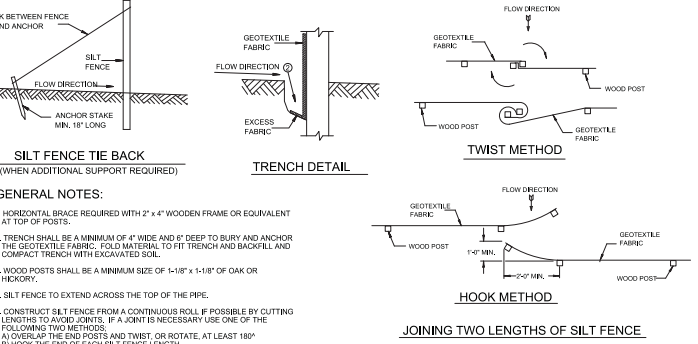
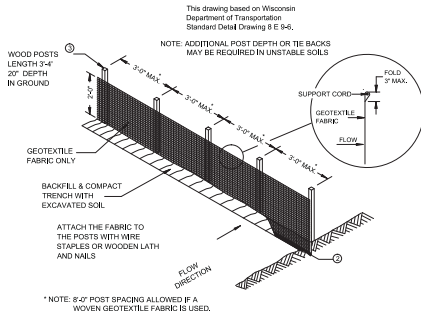
C2

EROSION CONTROL NOTES:

1. DETAILS OF CONSTRUCTION NOT SHOWN ON THIS DRAWING SHALL CONFORM TO THE PERTINENT REQUIREMENTS OF THE WISCONSIN DEPARTMENT OF NATURAL RESOURCES CONSERVATION PRACTICE STANDARDS.
2. WHEN POSSIBLE, THE SILT FENCE SHOULD BE CONSTRUCTED IN AN ARC OR HORSESHOE SHAPE WITH ENDS POINTING UPSLOPE TO MAXIMIZE BOTH STRENGTH AND EFFECTIVENESS.
3. CONTRACTOR SHALL CHECK ALL EROSION CONTROL MEASURES EVERY SEVEN DAYS OR WITHIN 24 HOURS AFTER EACH 0.5 INCH RAINFALL AND PROVIDE ANY MAINTENANCE REQUIRED FOR CONFORMANCE WITH THIS PLAN. CONTRACTOR SHALL MAINTAIN LOG OF INSPECTIONS WHICH SHALL BE KEPT ON-SITE.
4. A MINIMUM OF 4 INCHES OF TOPSOIL SHALL BE PLACED ON AREAS TO BE VEGETATED.
5. SEEDING SHALL BEGIN WITHIN 7 DAYS AFTER FINAL GRADING IS COMPLETED.
6. SEEDING SHALL CONFORM TO REQUIREMENTS OF SECTION 630 OF WISDOT STANDARD SPECIFICATIONS FOR ROAD AND BRIDGE CONSTRUCTION. A NO. 40 MIXTURE SHALL BE APPLIED AT A RATE OF 2 POUNDS PER 1000 S.F.
7. PLACE MULCH AND TACKIFIER ON THE SEEDED AREAS.
8. DISTURBED AREAS LEFT INACTIVE FOR THIRTY OR MORE DAYS SHALL BE STABILIZED WITH TEMPORARY SEED AND MULCH, OR WISDOT-APPROVED POLYMER.
9. TEMPORARY SEEDING: ANNUAL RYE GRASS AT 25 lbs/ACRE LATE SEASON TEMPORARY SEEDING (SEPT. 15 TO OCT. 15); WINTER WHEAT AT 2 BUSHELS/ACRE DORMANT SEEDING (AFTER NOV. 1); NO. 10 MIXTURE AT 4 POUNDS PER 1000 S.F.
10. POLYMER MUST BE APPLIED TO ALL DISTURBED AREAS IF SEEDING IS NOT COMPLETED BY OCTOBER 15.
11. IF DEWATERING IS NECESSARY, DEWATERING OPERATIONS MUST BE PERFORMED IN ACCORDANCE WITH WDNR TECHNICAL STANDARD 10891 "DEWATERING".
12. TOPSOIL PILES LEFT IN PLACE FOR LONGER THAN 30 DAYS MUST BE STABILIZED WITH TEMPORARY SEEDING.
13. EROSION CONTROL MEASURES ARE TO REMAIN IN PLACE UNTIL THE SITE IS STABILIZED.

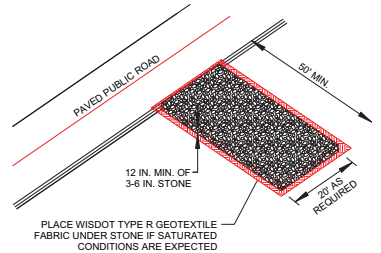
CONSTRUCTION SEQUENCE:

1. CONSTRUCT STONE TRACKING PAD AT THE PROPOSED ENTRANCE.
2. INSTALL SILT FENCE AT THE LOCATIONS NOTED ON THE PLANS. THIS MUST BE DONE BEFORE ANY GRADING ACTIVITIES TAKE PLACE.
3. INSTALL INLET PROTECTION FOR EXISTING INLETS.
4. TOPSOIL IS TO BE STRIPPED AND STOCKPILED. THE STOCKPILE IS TO BE PROTECTED WITH SILT FENCE WITHIN 7 DAYS AND SEEDED WITHIN 30 DAYS OF LAYUP.
5. ROUGH GRADING MAY TAKE PLACE AFTER TOPSOIL STRIPPING.
6. UTILITY INSTALLATION WILL TAKE PLACE DURING ROUGH GRADING. ALL CATCH BASINS AND INLETS ARE TO BE PROTECTED IMMEDIATELY AFTER INSTALLATION IN ACCORDANCE WITH THE DETAIL IN THESE PLANS.
7. PERMANENT SEEDING TO BE COMPLETED BY OCTOBER 15TH OF THE YEAR GRADING WORK IS COMPLETED OR BY JUNE 1ST OF THE FOLLOWING YEAR.

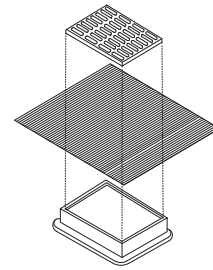


- SILT FENCE TIE BACK**
(WHEN ADDITIONAL SUPPORT REQUIRED)
- TRENCH DETAIL**
- GENERAL NOTES:**
1. HORIZONTAL BRACE REQUIRED WITH 2" x 4" WOODEN FRAME OR EQUIVALENT AT TOP OF POSTS.
 2. TRENCH SHALL BE A MINIMUM OF 4" WIDE AND 6" DEEP TO BURY AND ANCHOR THE GEOTEXTILE FABRIC. FOLD MATERIAL TO FIT TRENCH AND BACKFILL AND COMPACT TRENCH WITH EXCAVATED SOIL.
 3. WOOD POSTS SHALL BE A MINIMUM SIZE OF 1-1/8" x 1-1/8" OF OAK OR HICKORY.
 4. SILT FENCE TO EXTEND ACROSS THE TOP OF THE PIPE.
 5. CONSTRUCT SILT FENCE FROM A CONTINUOUS ROLL IF POSSIBLE BY CUTTING LENGTHS TO AVOID JOINTS. IF A JOINT IS NECESSARY USE ONE OF THE FOLLOWING TWO METHODS:
a) OVERLAP THE END POSTS AND TWIST OR ROTATE, AT LEAST 180°
b) HOOK THE END OF EACH SILT FENCE LENGTH.

SILT FENCE 1
C3



CONSTRUCTION ENTRANCE TRACKING PAD 2
C3



- INSTALLATION NOTES:**
- TRIM EXCESS FABRIC IN THE FLOW LINE TO WITHIN 3" OF THE GRATE. THE CONTRACTOR SHALL DEMONSTRATE A METHOD OF MAINTENANCE, USING A SEWN FLAP, HAND HOLDS OR OTHER METHOD TO PREVENT ACCUMULATED SEDIMENT FROM ENTERING THE INLET. INLET PROTECTION SHALL BE INSPECTED AT A MINIMUM WEEKLY AND WITHIN 24 HOURS AFTER EVERY PRECIPITATION EVENT THAT PRODUCES 0.5 INCHES DURING A 24 HOUR PERIOD. SEDIMENT DEPOSITS SHALL BE REMOVED WHEN ACCUMULATION TOTALS BETWEEN 1/2" AND 1/2" THE DESIGN DEPTH OF THE DEVICE OR WHEN THE DEVICE IS NOT FUNCTIONING AS DESIGNED. DURING REMOVAL OF INLET PROTECTION ENSURE SEDIMENT DOES NOT FALL INTO THE INLET. ANY MATERIAL WHICH FALLS INTO THE INLET SHALL BE REMOVED.

INLET PROTECTION 3
C3

Owner:
BRIGHTSTAR GROUP HOLDINGS
1125 TRU-STATE PARKWAY, SUITE 700
GURNEE, IL 60031
P: 847.693.2007
JAYSON PEARL

Structural Engineer:
JRSA HEDRICK & ASSOCIATES
7000 EAST BELLEVUE AVENUE
ENGLEWOOD, CO 80111
P: 303.839.1963
STEVE JRSA

Electrical Engineer:
JCAA CONSULTING ENGINEERS LLC
13772 DENVER WEST PARKWAY, SUITE 200
LAKEWOOD, CO 80401
P: 303.985.3260
F: 303.987.2304
JERRY ALBER

Mechanical/Plumbing Engineer:
GIVEN & ASSOCIATES, INC.
735 S. XENON CT., SUITE 201
LAKEWOOD, CO 80228
P: 303.716.1270
F: 303.716.1272
JEFF GIVEN

Civil Engineer:
LYNCH & ASSOCIATES
5482 WESTRIDGE DRIVE
NEW BERLIN, WI 53151
P: 262.402.5040
TIMOTHY LYNCH

Landscape Architect:
THE BRUCE COMPANY
2830 PARKMETER STREET
P.O. BOX 620330
MIDDLETON, WI 53562
P: 608.836.7041
DANA PETIT

Issued For:

Item	Date	Description
1.	04.04.2012	Planning Department Submittal

Scale:

Key Plan:

LBA Project Number: 2011-46
Date: APRIL 4, 2012

C3

NOTICE: These documents are instruments of professional service, and information contained therein is incomplete unless used in conjunction with Lantz-Boggio's integrations, decisions, observations and administrative actions. Use or reproduction of these documents in whole or in part without Lantz-Boggio's consent is in violation of common law copyrights, statutory and other reserved rights. Refer to Act 17 U.S.C., par. 511 (1991), which preempts state and local public records act. Refer to Act 17 U.S.C., par. 301 (1991).

NOTICE: These documents are instruments of professional service, and information contained therein is incomplete unless used in conjunction with Lantz+Boggio's integrations, decisions, observations and administrative and administrative actions. Use or reproduction of these documents in whole or in part without Lantz+Boggio's consent is a violation of common law copyright, statutory and other reserved rights. Refer to ACT 17 U.S.C., par. 511 (1991), which preempts state and local public records act. Refer to ACT 17 U.S.C., par. 501 (1991).

Owner:
 BRIGHTSTAR GROUP HOLDINGS
 1125 16th STATE PARKWAY, SUITE 700
 GURNEE, IL 60031
 Ph: 847.693.2007
 JAYSON PEARL

Structural Engineer:
 JRSA HEDRICK & ASSOCIATES
 7000 EAST BELLEVUE AVENUE
 ENGLEWOOD, CO 80111
 Ph: 303.839.1963
 STEVE JRSA

Electrical Engineer:
 JCAA CONSULTING ENGINEERS LLC
 13772 DENVER WEST PARKWAY, SUITE 200
 LAKEWOOD, CO 80401
 Ph: 303.985.3260
 F: 303.987.2304
 JERRY ALBER

Mechanical/Plumbing Engineer:
 GIVEN & ASSOCIATES, INC.
 735 S. XENON CT., SUITE 201
 LAKEWOOD, CO 80228
 Ph: 303.716.1270
 F: 303.716.1272
 JEFF GIVEN

Civil Engineer:
 LYNCH & ASSOCIATES
 5482 WESTRIDGE DRIVE
 NEW BERLIN, WI 53151
 Ph: 262.402.5040
 TIMOTHY LYNCH

Landscape Architect:
 THE BRUCE COMPANY
 2830 PARMENTER STREET
 P.O. BOX 620330
 MADISON, WI 53762
 Ph: 608.836.7041
 DANA PETIT

Issued For:

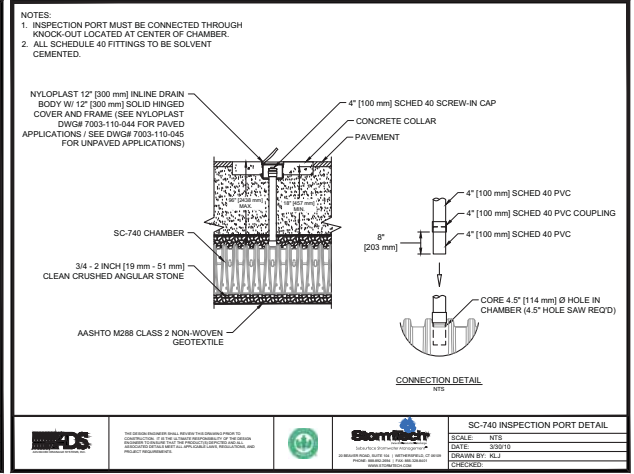
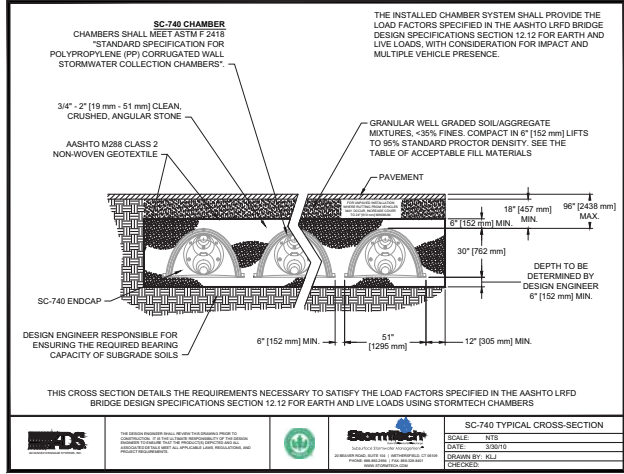
Item	Date	Description
1.	04.04.2012	Planning Department Submittal

Scale:

Key Plan:

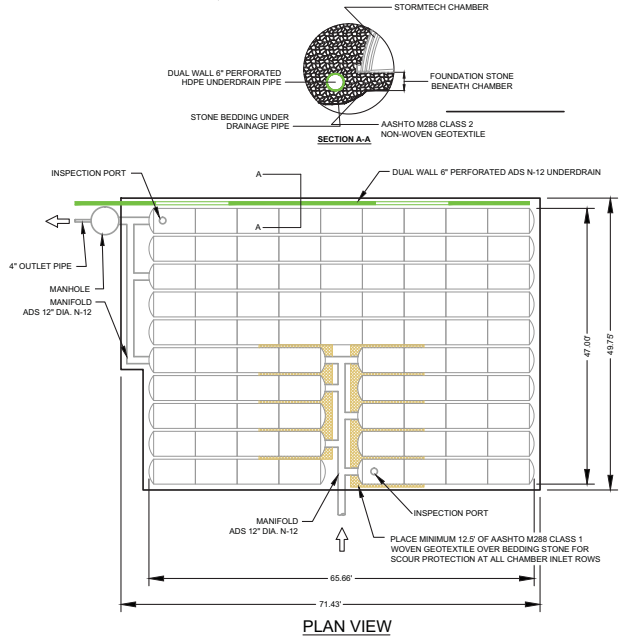
LBA Project Number: 2011.46
 Date: APRIL 4, 2012

C4



STORMTECH STORM WATER CHAMBER 1 C4

- PROJECT SPECIFIC NOTES:**
1. THE DEPTH OF STONE BELOW CHAMBER SYSTEM IS TO BE 6 INCHES.
 2. THE DEPTH OF STONE ABOVE THE CHAMBER SYSTEM IS TO BE 6 INCHES.
 3. THE CHAMBER SYSTEM WILL CONSIST OF 4 ROWS WITH 3 CHAMBERS IN EACH ROW AND 4 ROWS WITH 3 CHAMBERS IN EACH ROW.
 4. THE CHAMBER BOTTOM WILL BE PLACED AT AN ELEVATION OF _____, THE BOTTOM OF THE STONE WILL BE AT AN ELEVATION OF _____.
 5. THE TOP OF THE STONE WILL BE AT AN ELEVATION OF _____.
 6. SEE GRADING PLAN FOR LOCATION OF CHAMBER SYSTEM.



NOTICE: These documents are instruments of professional service, and information contained therein is incomplete unless used in conjunction with Lantz-Boggio's integrations, decisions, observations and administrative actions. Use or reproduction of these documents in whole or in part without Lantz-Boggio's consent is a violation of common law copyright, statutory and other reserved rights. Refer to Act 17 U.S.C., 101, 111 (1991), who prepares state and local public records act. Refer to Act 17 U.S.C., 101, 111 (1991).

Owner:
BRIGHTSTAR GROUP HOLDINGS
1125 19th-STATE PARKWAY, SUITE 700
GURNEE, IL 60031
P: 847.693.2007
JAYSON PEARL

Structural Engineer:
JRSA HEDRICK & ASSOCIATES
7000 EAST BELLEVUE AVENUE
ENGLEWOOD, CO 80111
P: 303.839.1963
STEVE JRSA

Electrical Engineer:
JCAA CONSULTING ENGINEERS LLC
13772 DENVER WEST PARKWAY, SUITE 200
LAKEWOOD, CO 80401
P: 303.985.3260
F: 303.987.2304
JERRY ALBER

Mechanical/Plumbing Engineer:
GIVEN & ASSOCIATES, INC.
735 S. XENON CT., SUITE 201
LAKEWOOD, CO 80228
P: 303.716.1270
F: 303.716.1272
JEFF GIVEN

Civil Engineer:
LYNCH & ASSOCIATES
5482 WESTRIDGE DRIVE
NEW BERLIN, WI 53151
P: 262.402.5040
TIMOTHY LYNCH

Landscape Architect:
THE BRUCE COMPANY
2830 PARKMETER STREET
P.O. BOX 620330
MIDDLETON, WI 53562
P: 608.836.7041
DANA PETIT

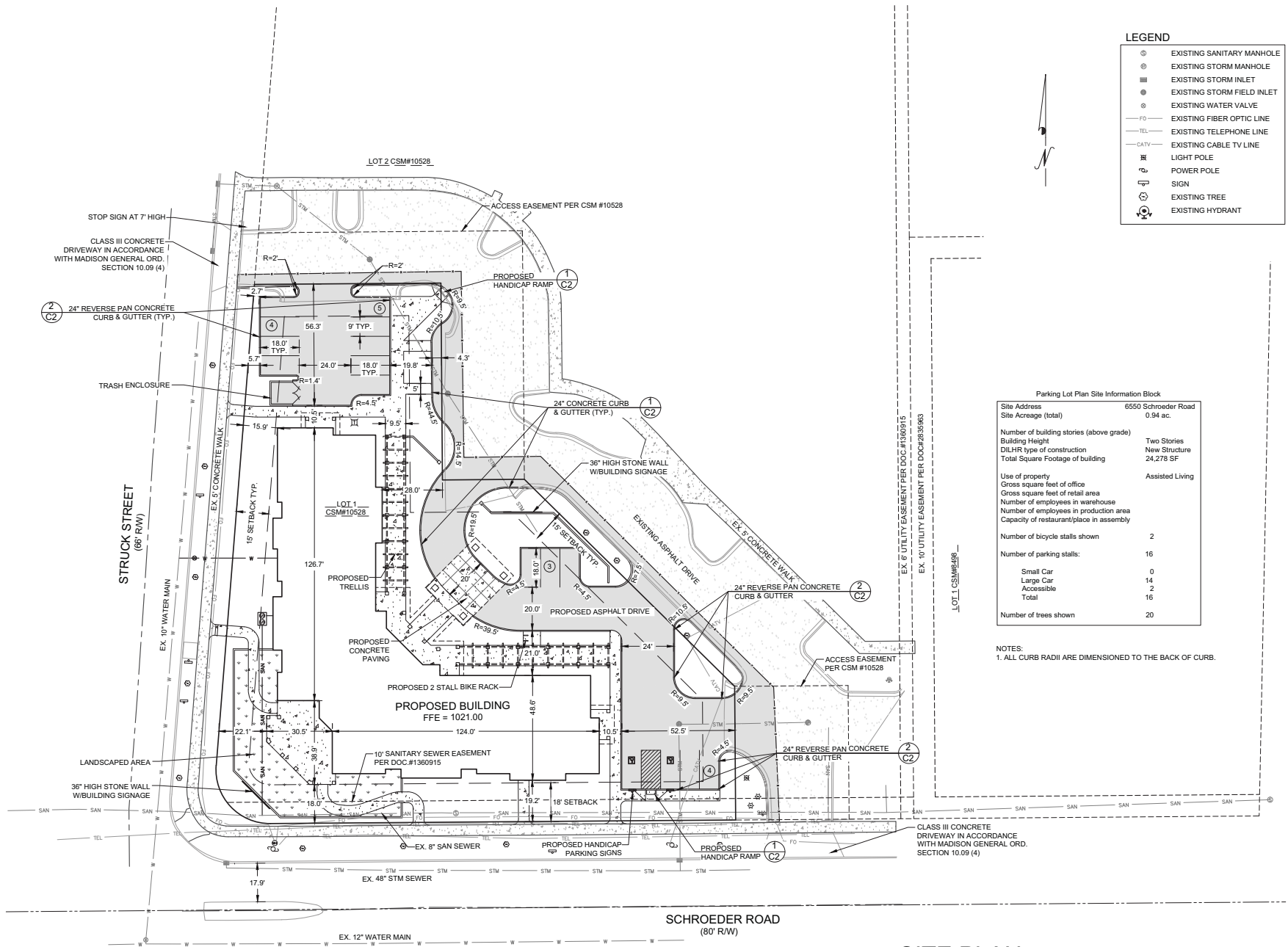
Issued For:

Item	Date	Description
1.	04.04.2012	Planning Department Submittal

Key Plan:

LBA Project Number: 2011-46
Date: APRIL 4, 2012

C5



LEGEND

⊙	EXISTING SANITARY MANHOLE
⊕	EXISTING STORM MANHOLE
⊖	EXISTING STORM INLET
⊙	EXISTING STORM FIELD INLET
⊕	EXISTING WATER VALVE
—FO—	EXISTING FIBER OPTIC LINE
—TEL—	EXISTING TELEPHONE LINE
—CATV—	EXISTING CABLE TV LINE
⊙	LIGHT POLE
⊕	POWER POLE
⊕	SIGN
⊙	EXISTING TREE
⊕	EXISTING HYDRANT

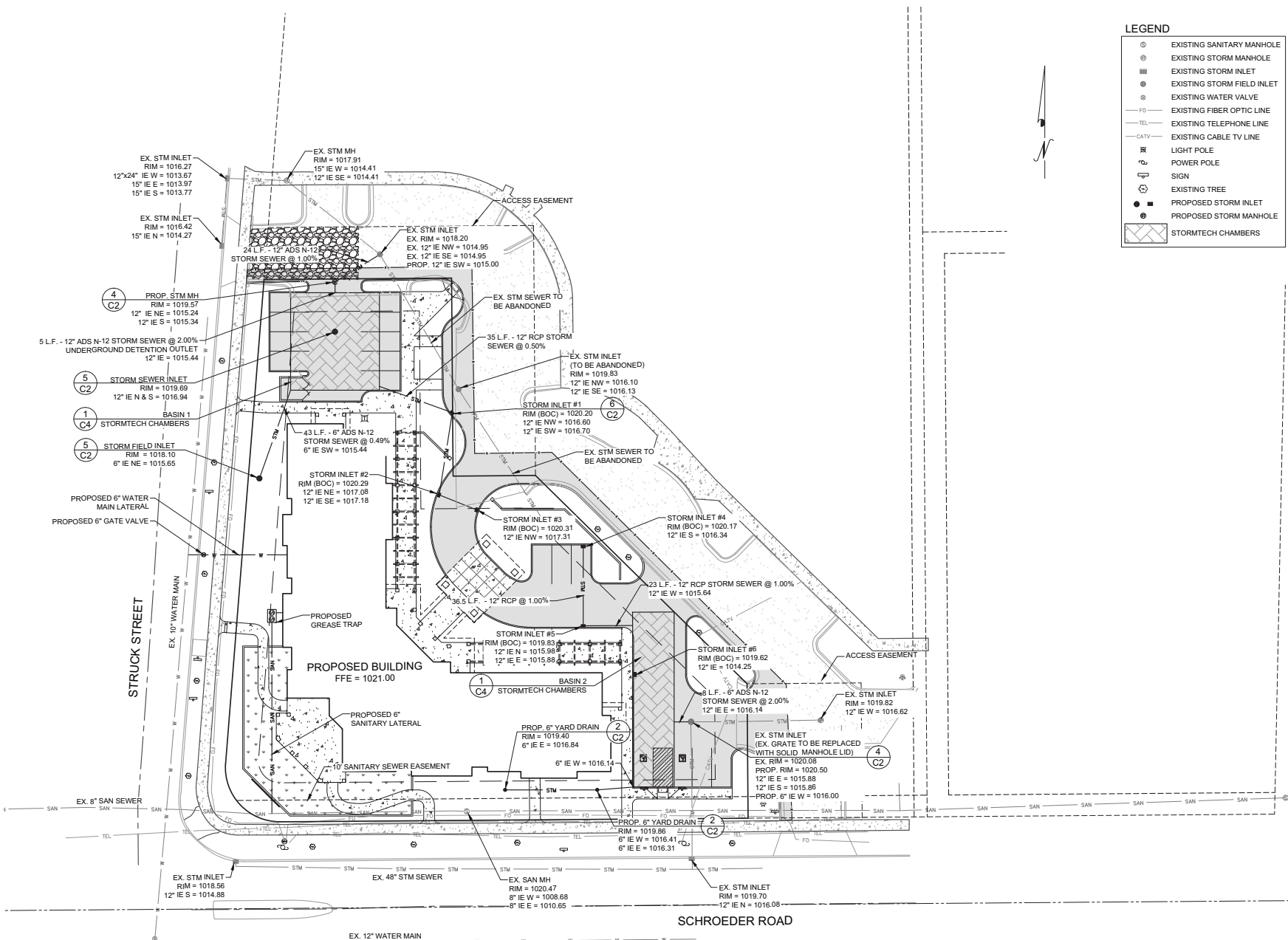
Parking Lot Plan Site Information Block

Site Address	6550 Schroeder Road
Site Acreage (total)	0.94 ac.
Number of building stories (above grade)	Two Stories
Building Height	New Structure
DILHR type of construction	24,278 SF
Total Square Footage of building	Assisted Living
Use of property	Assisted Living
Gross square feet of office	
Gross square feet of retail area	
Number of employees in warehouse	
Number of employees in production area	
Capacity of restaurant/place in assembly	
Number of bicycle stalls shown	2
Number of parking stalls:	16
Small Car	0
Large Car	14
Accessible	2
Total	16
Number of trees shown	20

NOTES:
1. ALL CURB RADII ARE DIMENSIONED TO THE BACK OF CURB.

SITE PLAN
SCALE: 1" = 20'

NOTICE: These documents are instruments of professional service, and information contained therein is incomplete unless used in conjunction with Lantz-Boggio's interpretations, decisions, observations and administrative files, or reproduction of these documents in whole or in part without Lantz-Boggio's consent is a violation of common law, copyrights, statutory and other reserved rights. Refer to A617 U.S.C., § 311 (1991), which preempts state and local public records acts. Refer to A617 U.S.C., § 301 (1991).



LEGEND

- ⊙ EXISTING SANITARY MANHOLE
- ⊙ EXISTING STORM MANHOLE
- ⊙ EXISTING STORM INLET
- EXISTING STORM FIELD INLET
- ⊙ EXISTING WATER VALVE
- FO— EXISTING FIBER OPTIC LINE
- TEL— EXISTING TELEPHONE LINE
- CATV— EXISTING CABLE TV LINE
- ⊙ LIGHT POLE
- ⊙ POWER POLE
- ⊙ SIGN
- ⊙ EXISTING TREE
- PROPOSED STORM INLET
- ⊙ PROPOSED STORM MANHOLE
- ▨ STORMTECH CHAMBERS

Owner:
 BRIGHTSTAR GROUP HOLDINGS
 1125 19th STATE PARKWAY, SUITE 700
 GURNEE, IL 60031
 Ph: 847.693.2007
 JAYSON PEARL

Structural Engineer:
 JIRSA HEDRICK & ASSOCIATES
 7000 EAST BELLEVUE AVENUE
 ENGLEWOOD, CO 80111
 Ph: 303.839.1963
 STEVE JIRSA

Electrical Engineer:
 JCAA CONSULTING ENGINEERS LLC
 13772 DENVER WEST PARKWAY, SUITE 200
 LAKEWOOD, CO 80401
 Ph: 303.985.3260
 Ph: 303.987.2304
 JERRY ALBER

Mechanical/Plumbing Engineer:
 GIVEN & ASSOCIATES, INC.
 735 S. XENON CT., SUITE 201
 LAKEWOOD, CO 80228
 Ph: 303.716.1270
 Ph: 303.716.1272
 JEFF GIVEN

Civil Engineer:
 LYNCH & ASSOCIATES
 5482 WESTRIDGE DRIVE
 NEW BERLIN, WI 53151
 Ph: 262.402.5040
 TIMOTHY LYNCH

Landscape Architect:
 THE BRUCE COMPANY
 2830 PARKER STREET
 P.O. BOX 620330
 MADISON, WI 53762
 Ph: 608.836.7041
 DANA PETT

Issued For:

Item	Date	Description
1.	04/04/2012	Planning Department Submittal

Seal:

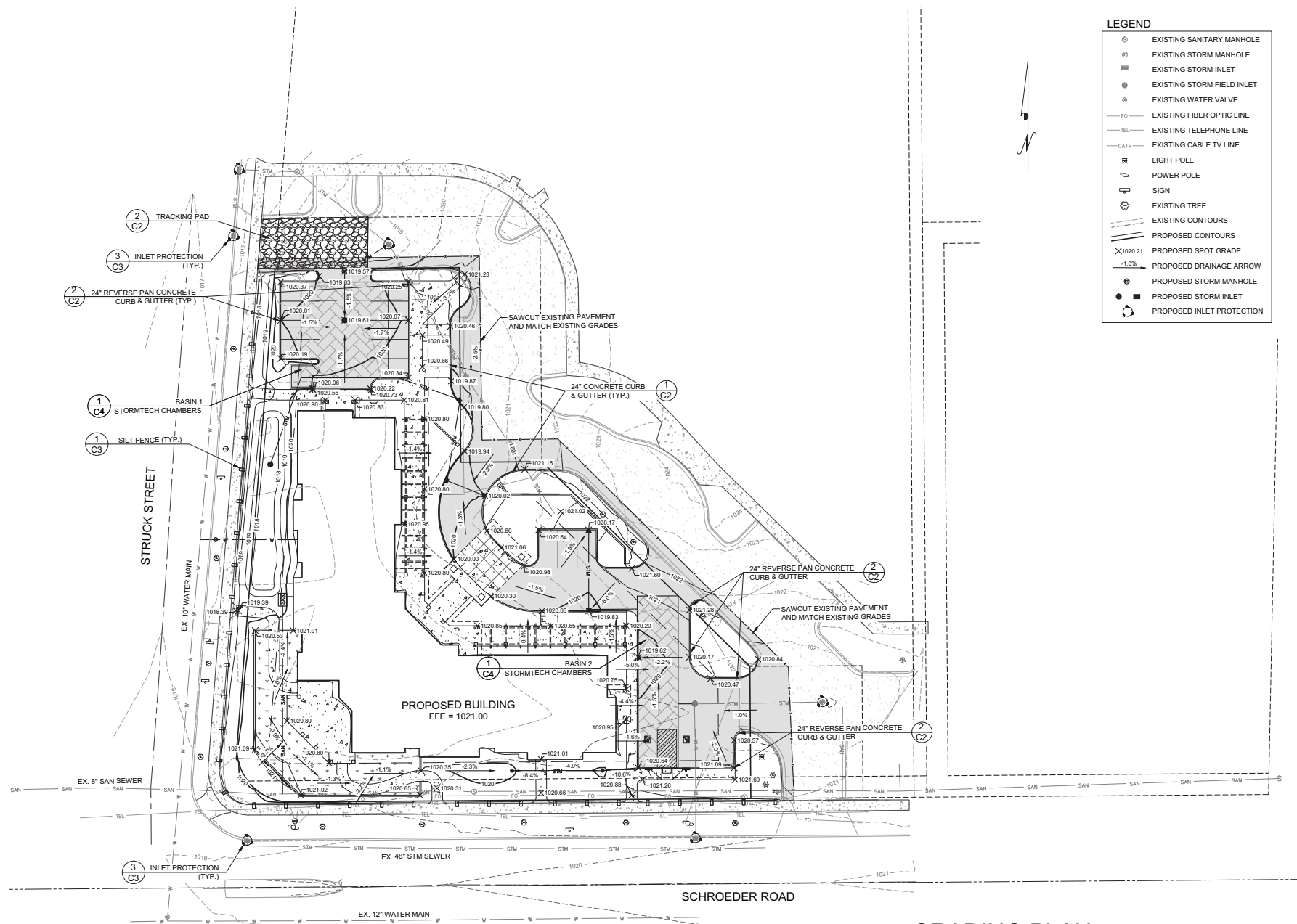
Key Plan:

LBA Project Number:	2011-46
Date:	APRIL 4, 2012

UTILITY PLAN
SCALE: 1" = 20'

C6

NOTICE: These documents are instruments of professional service, and information contained therein is incomplete unless used in conjunction with Lantz-Boggia's interpretations, decisions, observations and administrative actions. Use or reproduction of these documents in whole or in part without Lantz-Boggia's consent is in violation of common law, copyrights, statutory and other reserved rights. Refer to Act 17, U.S.C., sec. 531 (1991), which preempts state and local public records act.



LEGEND

- ⊙ EXISTING SANITARY MANHOLE
- ⊙ EXISTING STORM MANHOLE
- EXISTING STORM INLET
- ⊙ EXISTING STORM FIELD INLET
- ⊙ EXISTING WATER VALVE
- FO — EXISTING FIBER OPTIC LINE
- TEL — EXISTING TELEPHONE LINE
- CATV — EXISTING CABLE TV LINE
- ⊙ LIGHT POLE
- ⊙ SIGN
- ⊙ EXISTING TREE
- EXISTING CONTOURS
- PROPOSED CONTOURS
- X1020.21 PROPOSED SPOT GRADE
- 1.0% PROPOSED DRAINAGE ARROW
- PROPOSED STORM MANHOLE
- PROPOSED STORM INLET
- ⊙ PROPOSED INLET PROTECTION

GRADING PLAN
SCALE: 1" = 20'

Lantz-Boggia Architects, P.C.
5650 DTC Pkwy, Suite 200 | Englewood | CO 80111
Ph: 303.773.0436 | Fax: 303.773.6709

BrightStar Assisted Living
Madison | Wisconsin

Owner:
BRIGHTSTAR GROUP HOLDINGS
1125 18th-STATE PARKWAY, SUITE 700
GURNEE, IL 60031
P: 847.693.2007
JAYSON PEARL

Structural Engineer:
JRSA HEDRICK & ASSOCIATES
7000 EAST BELLEVUE AVENUE
ENGLEWOOD, CO 80111
P: 303.839.1963
STEVE JRSA

Electrical Engineer:
JCAA CONSULTING ENGINEERS LLC
13772 DENVER WEST PARKWAY, SUITE 200
LAKEWOOD, CO 80401
P: 303.985.3260
F: 303.987.2304
JERRY ALBER

Mechanical/Plumbing Engineer:
GIVEN & ASSOCIATES, INC.
735 S. XENON CT., SUITE 201
LAKEWOOD, CO 80226
P: 303.716.1270
F: 303.716.1272
JEFF GIVEN

Civil Engineer:
LYNCH & ASSOCIATES
5482 WESTRIDGE DRIVE
NEW BERLIN, WI 53151
P: 262.402.5040
TIMOTHY LYNCH

Landscape Architect:
THE BRUCE COMPANY
2830 PARKMETER STREET
P.O. BOX 620330
MIDDLETON, WI 53562
P: 608.836.7041
DANA PETIT

Issued For:

Item	Date	Description
1.	04.04.2012	Planning Department Submittal

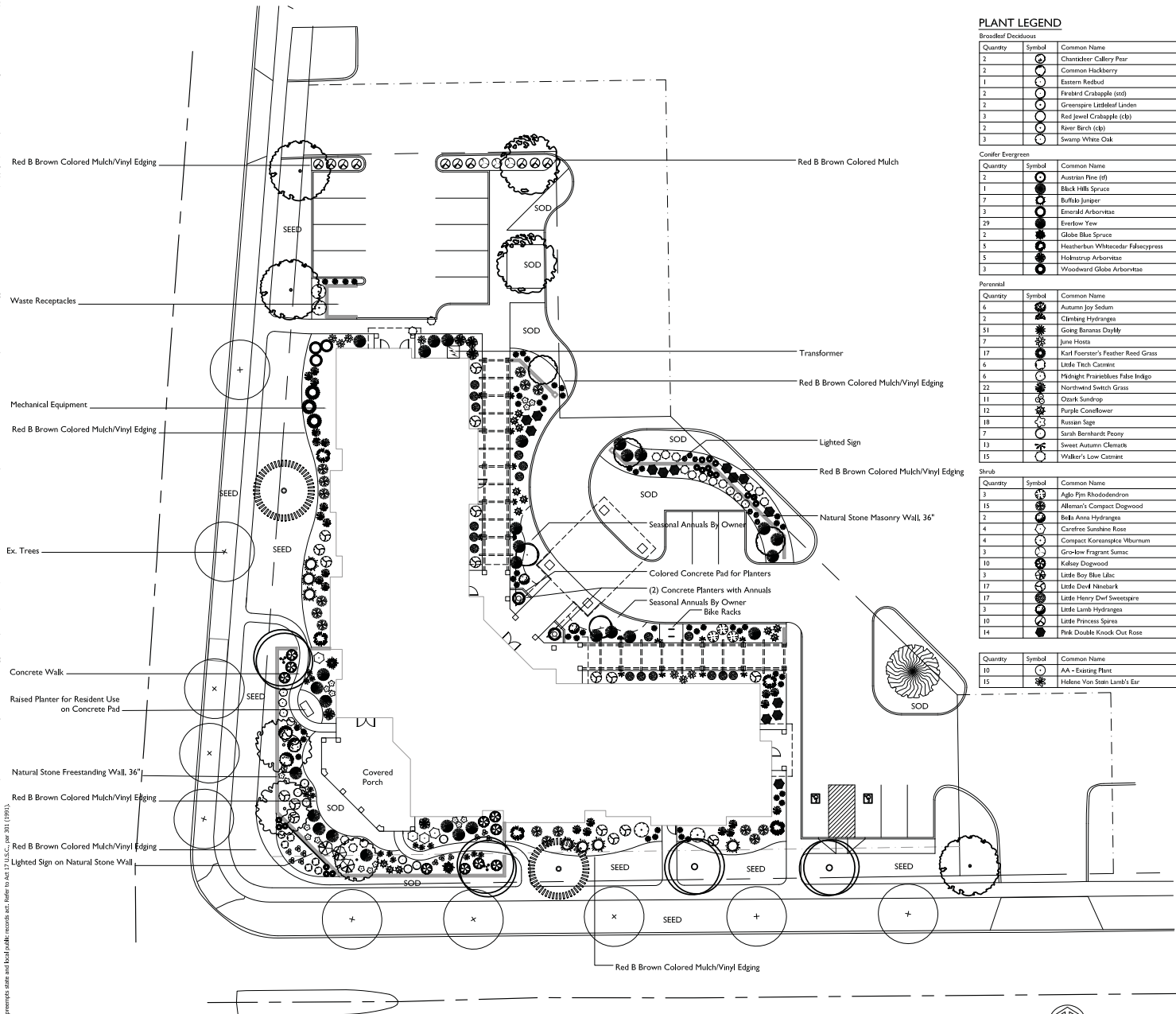
Seal:

Key Plan:

LBA Project Number: 2011-46
Date: APRIL 4, 2012

C7

NOTICE: These documents are instruments of professional service, and information contained therein is confidential. No part of these documents shall be reproduced or transmitted in any form or by any means, electronic, mechanical, photocopying, recording, or by any information storage and retrieval system, without the prior written consent of Lantz+Boggo Architects, P.C. or its affiliates. All rights reserved. Lantz+Boggo Architects, P.C. is a registered professional corporation under the laws of the State of Wisconsin. License No. 17-10001. (1/01)

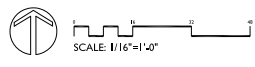


PLANT LEGEND

Quantity	Symbol	Common Name	Scientific Name	Code Name	Planting Size
Broadleaf Deciduous					
2	⊙	Chanticleer Callery Pear	<i>Pyrus Calleryana 'Chanticleer'</i>	CCP	4" B&B
1	⊙	Common Hackberry	<i>Rhus Cockburnii</i>	CHB	3" TS
1	⊙	Eastern Redbud	<i>Carya Corniculata</i>	ERB	4-6 B&B
2	⊙	Fraser's Crabapple (red)	<i>Malus 'Sargentii' 'Select A'</i> (red)	FCS	3" B&B
2	⊙	Greenspire Littleleaf Linden	<i>Tilia Cordata 'Greenspire'</i>	GLL	3 1/2" TS
3	⊙	Red Jewel Crabapple (cb)	<i>Malus 'Red Jewel' (cb)</i>	RJC	8" B&B
2	⊙	River Birch (cb)	<i>Betula Nigra (cb)</i>	RBC	8" TS
3	⊙	Swamp White Oak	<i>Quercus Bicolor</i>	SWO	3" TS
Conifer Evergreen					
2	⊙	Austrian Pine (tf)	<i>Pinus Nigra</i>	AP	6" B&B
1	⊙	Black Hills Spruce	<i>Picea Glauca Var. densata</i>	BHS	6" TS
7	⊙	Buffalo Juniper	<i>Juniperus Sabina 'Buffalo'</i>	BJ	#2 CONT.
3	⊙	Emerald Arborvitae	<i>Thuja Occidentalis 'Emerald'</i>	EA	6" B&B
29	⊙	Everlow Yew	<i>Taxus X Media 'Everlow'</i>	ELY	18" B&B
2	⊙	Globe Blue Spruce	<i>Pinus Pungens 'Globe Blue'</i>	GBS	24" B&B
3	⊙	Heathburn Whitecolor Falsecypress	<i>Chamaecyparis Thyoides 'Heathburn'</i>	HWF	#5 CONT.
5	⊙	Hokitanga Arborvitae	<i>Thuja Occidentalis 'Hokitanga'</i>	HA	#5 CONT.
3	⊙	Woodward Globe Arborvitae	<i>Thuja Occidentalis 'Woodward'</i>	WGA	#2 CONT.
Perennial					
6	⊙	Autumn Joy Sedum	<i>Sedum 'Autumn Joy'</i>	AJS	#2 CONT.
2	⊙	Climbing Hydrangeas	<i>Hydrangea Anomala Ssp. Petiolaris</i>	COHA	#5 CONT.
51	⊙	Gong Bananas Daylily	<i>Hemerocallis 'Gong Bananas'</i>	GBD	#1 CONT.
7	⊙	June Hosta	<i>Hosta 'June'</i>	JH	#1 CONT.
17	⊙	Karl Foerster's Feather Reed Grass	<i>Calamagrostis Canadensis 'Karl Foerster'</i>	KFG	#1 CONT.
6	⊙	Little Torch Cattail	<i>Najas Racemosa 'Little Torch'</i>	LTC	#1 CONT.
6	⊙	Midnight Prairieblues False Indigo	<i>Baptisia 'Midnight'</i>	MPF	#1 CONT.
22	⊙	Norwood Switch Grass	<i>Panicum Virgatum 'Norwood'</i>	NSG	#1 CONT.
11	⊙	Quirk Sunrise	<i>Onosmodium Missourianum</i>	OSD	#1 CONT.
12	⊙	Purple Coneflower	<i>Echinacea Purpurea 'Magnus'</i>	PCF	#1 CONT.
18	⊙	Russian Sage	<i>Perovskia Atropurpurea</i>	RS	#1 CONT.
7	⊙	Sarah Bernhardt Peony	<i>Paeonia Sarah Bernhardt'</i>	SBP	#2 CONT.
13	⊙	Sweet Autumn Clematis	<i>Clematis Paniculata</i>	SAC	#1 CONT.
15	⊙	Walker's Low Camellia	<i>Nepeta X Fassenii 'Walker's Low'</i>	WLC	#1 CONT.
Shrub					
3	⊙	Aglo Fir Rhododendron	<i>Rhododendron 'Aglo'</i>	AFJM	#3 CONT.
15	⊙	Alleman's Compact Dogwood	<i>Cornus Sericea 'Alleman's Compact'</i>	ACD	#5 CONT.
2	⊙	Belt's Arma Hydrangeas	<i>Hydrangea Arborescens 'Belt's'</i>	BAH	#2 CONT.
4	⊙	Carefree Sunshine Rose	<i>Rosa 'Radant'</i>	CSR	#2 CONT.
4	⊙	Compact Koramajestic Viburnum	<i>Viburnum 'Compact'</i>	CKV	3P B&B
3	⊙	Grand-Jay Fragrant Sumac	<i>Rhus Arvensis 'Grand-Jay'</i>	GLS	#3 CONT.
10	⊙	Kalser Dogwood	<i>Cornus Sericea 'Kalser'</i>	KD	#5 CONT.
3	⊙	Little Boy Blue Lilac	<i>Syringa Vulgaris 'Wonderblue'</i>	LBLL	#5 CONT.
17	⊙	Little Dwarf Rhinobark	<i>Physocarpus Opulifolius 'Donna May'</i>	LDN	#2 CONT.
17	⊙	Little Henry Dwarf Sweetgum	<i>Itex Virginia 'Sprich'</i>	LHDS	#2 CONT.
3	⊙	Little Lamb Hydrangeas	<i>Hydrangea Paniculata 'Little Lamb'</i>	LLH	#5 CONT.
10	⊙	Little Princess Spirea	<i>Spiraea Japonica 'Little Princess'</i>	LPS	#2 CONT.
14	⊙	Pink Double Knock Out Rose	<i>Rosa 'Radikopink'</i>	PDKR	#2 CONT.
AA - Existing Plant					
10	⊙	AA - Existing Plant	AA - Existing Plant	AAEXIST	
15	⊙	Helene Von Stein Lamb's Ear	<i>Stachys byzantina 'Helene Von Stein'</i>	HVS	#1 CONT.

GENERAL NOTES

- A) Areas labeled "Red B Colored Wood Mulch" to receive a mixture of recycled wood mulch, colored brown or red as indicated, spread to a 3" depth over pre-emergent herbicide.
- B) Individual trees (and shrub groupings) found along perimeter of property as well as those found within lawn areas to receive wood mulch rings (and wood mulch beds) consisting of a mixture of recycled wood mulch, colored brown or red as indicated, spread to a minimum 3" depth (3' wide beds for shrub groupings).
- C) "Vinyl Edging" to be Valley View Black Diamond Vinyl Edging or equivalent.
- D) "Seed" areas shall be finish-graded and seeded at a rate of 4 lbs. per 1,000 sq. ft.
- E) Seed shall consist of the following mixture:
 40% Palmer Ryegrass
 20% Baron Bluegrass
 20% Nassau Bluegrass
 20% PennLawn Creeping Red Fescue
- F) Areas labeled "Sod" shall receive only No. 1 grade nursery-grown bluegrass sod.



Lantz+Boggo Architects, P.C.
 5650 DTC Pkwy., Suite 200 | Englewood | CO 80111
 PH: 303.773.9436 | FAX: 303.773.9709

BrightStar Assisted Living
 Madison | Wisconsin

Owner:
 BRIGHTSTAR GROUP HOLDINGS
 1125 178-STATE PARKWAY, SUITE 700
 GURNEE, IL 60031
 P: 847.693.2007
 JAYSON PEARL

Structural Engineer:
 JRS&A HEDRICK & ASSOCIATES
 7000 EAST BELLEVUE AVENUE
 ENGLEWOOD, CO 80111
 P: 303.639.1983
 STEVE JRS&A

Electrical Engineer:
 JCA& CONSULTING ENGINEERS LLC
 13772 DENVER WEST PARKWAY, SUITE 200
 LAKEWOOD, CO 80401
 P: 303.985.5200
 JERRY ALBER

Mechanical/Plumbing Engineer:
 GREEN ASSOCIATES, INC.
 7000 EAST BELLEVUE AVENUE
 ENGLEWOOD, CO 80228
 P: 303.716.1270
 P: 303.716.1270
 JEFF GIVEN

Civil Engineer:
 LYNCH & ASSOCIATES
 5402 WESTHEDGE DRIVE
 NEW BERLIN, WI 53151
 P: 262.402.5040
 TPODHY@LYNCH

Landscape Architect:
 THE BRUCE COMPANY
 2830 PARMENTER STREET
 P.O. BOX 620330
 MADISON, WI 53762
 P: 608.836.7041
 DANA PETIT

Issued For:

Item	Date	Description
1.	04.04.2012	Planning Department Submittal

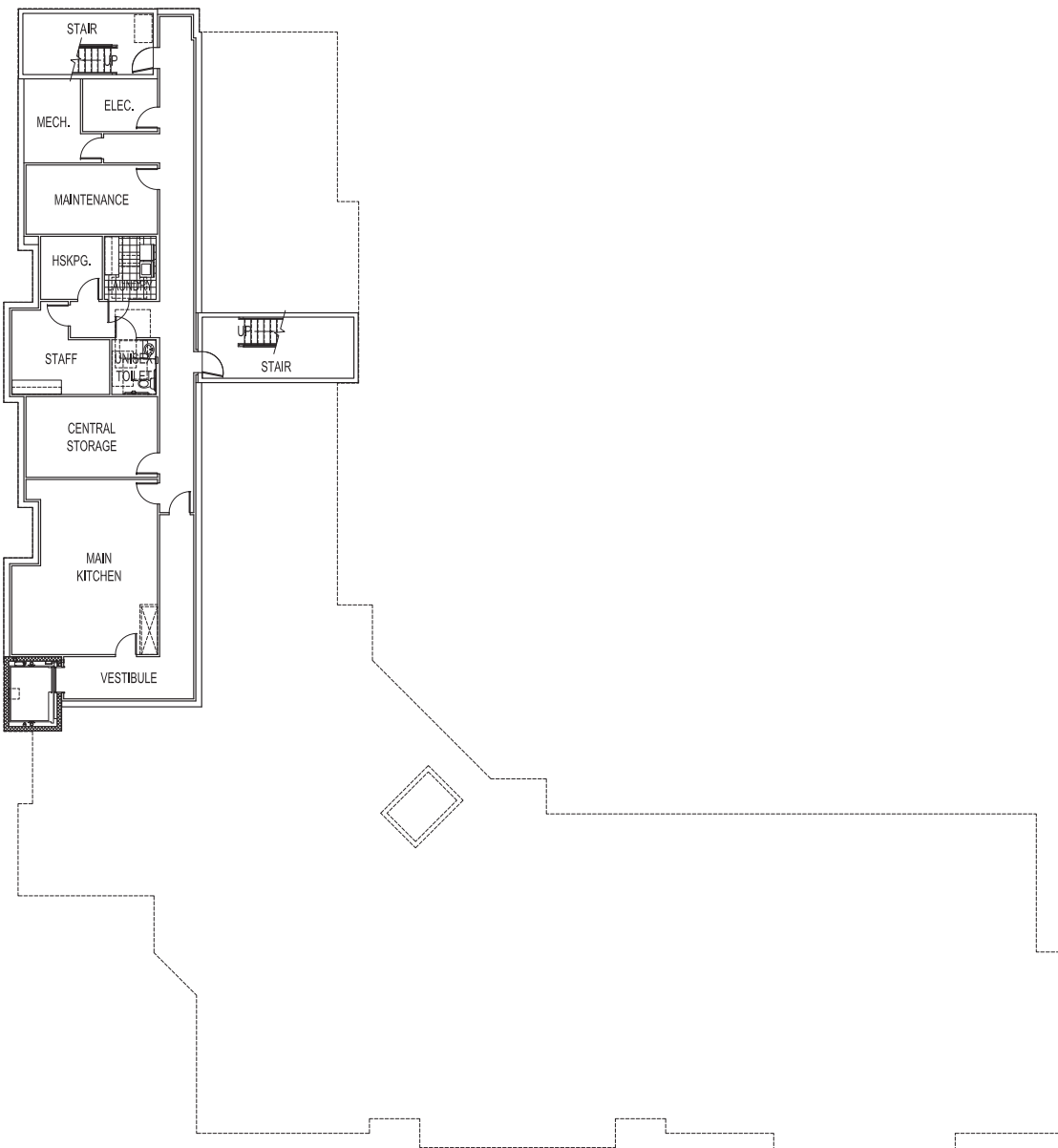
Sheet:

Key Plan:

Landscape Plan

LBA Project Number: 2011.46
 Date: APRIL 4, 2012

NOTICE: These documents are instruments of professional service, and information contained therein is incomplete unless used in conjunction with Lantz-Boggio's Interpretations, decisions, observations and certifications. Use or reproduction of these documents in whole or in part without Lantz-Boggio's consent is prohibited. Lantz-Boggio's consent is hereby granted for the use of these documents in whole or in part without Lantz-Boggio's consent for the purposes of common law, copyright, statutory and other reserved rights. Refer to Act 17, U.S.C., par. 311 (1975), with its preceding sections and final paragraph, Wisconsin Act 17, U.S.C., par. 301 (1975).



1 BASEMENT PLAN
SCALE: 1/8" = 1'-0"



Owner:
BRIGHTSTAR GROUP HOLDINGS
1125 TRISTATE PARKWAY, SUITE 700
GURNEE, IL 60031
P: 847.893.2007
JAYSON PEARL

Structural Engineer:
JIRSA HEDRICK & ASSOCIATES
7000 EAST BELLEVUE AVENUE
ENGLEWOOD, CO 80111
P: 303.699.1963
STEVE JIRSA

Electrical Engineer:
JCA CONSULTING ENGINEERS LLC
13772 DENVER WEST PARKWAY, SUITE 200
LAKEWOOD, CO 80401
P: 303.986.3060
F: 303.987.2304
JERRY ALBER

Mechanical/Plumbing Engineer:
GIVEN & ASSOCIATES, INC.
725 S. XENON CT., SUITE 201
LAKEWOOD, CO 80228
P: 303.716.1270
F: 303.716.1272
JEFF GIVEN

Civil Engineer:
LYNCH & ASSOCIATES
5482 WESTRIDGE DRIVE
NEW BERLIN, WI 53151
P: 262.402.0048
TIMOTHY LYNCH

Landscape Architect:
THE BRUCE COMPANY
2630 PARKMETER STREET
P.O. BOX 690309
MIDDLETON, WI 53562
P: 608.836.7041
DANA PETT

Issued For:

Item	Date	Description
1.	04.04.2012	Planning Department Submittal

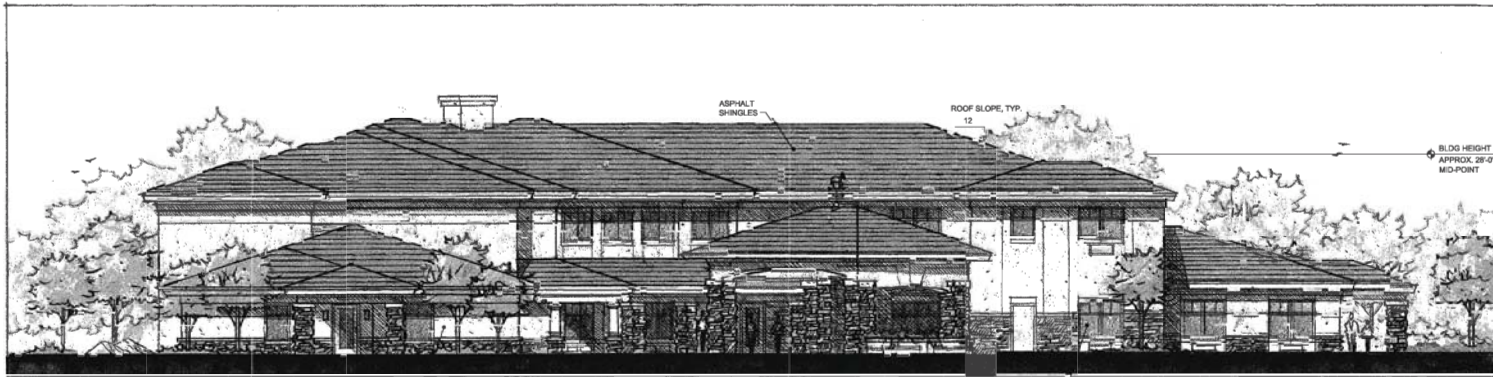
Seal:

Key Plan:

LBA Project Number: 2011.46
Date: APRIL 4, 2012

**BASEMENT
FLOOR
PLAN**

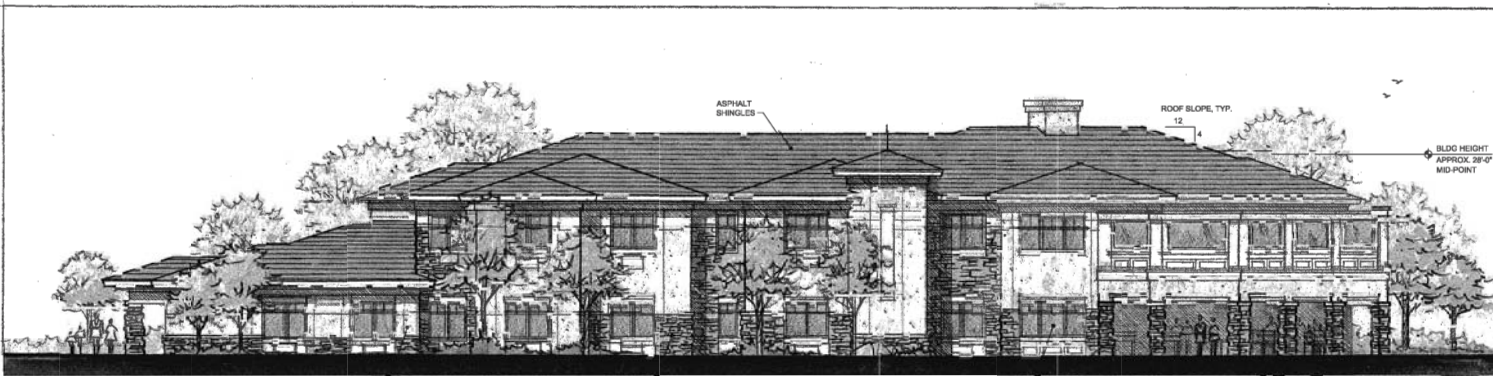
A-201



PORTE COCHERE BUILDING ELEVATION
1/8" = 1'-0" 2 APRIL 2012



SCHROEDER SIDE BUILDING ELEVATION
1/8" = 1'-0" 2 APRIL 2012



STRUCK SIDE BUILDING ELEVATION
1/8" = 1'-0" 2 APRIL 2012

Owner:
BRIGHTSTAR GROUP HOLDINGS
1125 TRI-STATE PARKWAY, SUITE 700
GURNEE, IL 60031
P: 847.683.2007
JAYSON PEARL

Structural Engineer:
JIRSA HEDRICK & ASSOCIATES
7300 EAST BELLEVUE AVENUE
ENGLEWOOD, CO 80111
P: 303.839.1983
STEVE JIRSA

Electrical Engineer:
JCA CONSULTING ENGINEERS LLC
13772 DENVER WEST PARKWAY, SUITE 200
LAKEWOOD, CO 80401
P: 303.965.3390
F: 303.987.2004
JERRY ALBER

Mechanical/Plumbing Engineer:
GIVEN & ASSOCIATES, INC.
738 S. JOHNSON CT., SUITE 201
LAKEWOOD, CO 80229
P: 303.716.1270
F: 303.716.1272
JEFF GIVEN

Civil Engineer:
LYNCH & ASSOCIATES
6482 WESTRIDGE DRIVE
NEW BERLIN, WI 53151
P: 262.402.8040
TIMOTHY LYNCH

Landscape Architect:
THE BRUCE COMPANY
2830 PARKMAN STREET
P.O. BOX 620330
MIDDLETON, WI 53562
P: 608.836.7041
DANA PETTIT

Issued For:

Item	Date	Description
1.	04.04.2012	Planning Department Submittal

Seal:

Key Plan:

LBA Project Number: 2011-46
Date: APRIL 4, 2012

EXTERIOR ELEVATIONS

A-401

NOTICE: These documents are instruments of professional service, and information contained therein is incomplete unless used in conjunction with Lantz-Boggio's interpretations, decisions, observations and administrations. Use or reproduction of these documents in whole or in part without Lantz-Boggio's consent is in violation of common law, copyrights, statutory and other reserved rights. Refer to A4.17 U.S.C., par. 311 (1976), which prohibits such use and also penalizes violators up to \$10,000 per act. (1976).

GREENRIAR™ WALL SCONCE (Version reflections are protected by U.S. Patent No. 6,864,376)

DESCRIPTION: The sconce housing is available in two sizes and is available in three finishes. All mounting hardware is included. Also included are detailed installation instructions. A gasketed seal around the sconce housing prevents moisture from entering the sconce housing. The sconce is designed to be installed between the mounting studs and provides low, ambient lighting. The sconce is designed to be installed between the mounting studs and provides low, ambient lighting. The sconce is designed to be installed between the mounting studs and provides low, ambient lighting.

FEATURES: The sconce is designed to be installed between the mounting studs and provides low, ambient lighting. The sconce is designed to be installed between the mounting studs and provides low, ambient lighting. The sconce is designed to be installed between the mounting studs and provides low, ambient lighting.

INSTALLATION: The sconce is designed to be installed between the mounting studs and provides low, ambient lighting. The sconce is designed to be installed between the mounting studs and provides low, ambient lighting. The sconce is designed to be installed between the mounting studs and provides low, ambient lighting.

ACCESSORY DIMENSIONS:

Accessories	Part Number	Description	Quantity
1. 1/2" x 1/2" x 1/2" x 1/2" x 1/2" x 1/2"	10000	1/2" x 1/2" x 1/2" x 1/2" x 1/2" x 1/2"	1
2. 1/2" x 1/2" x 1/2" x 1/2" x 1/2" x 1/2"	10001	1/2" x 1/2" x 1/2" x 1/2" x 1/2" x 1/2"	1

3 NTS LUMINAIRE TYPES "CC" & "EE"

GREENRIAR™ - SMALL

MINIMUM DIMENSIONS: GB 5 175 PSMV F MI BRZ PCR

DESCRIPTION: The sconce housing is available in two sizes and is available in three finishes. All mounting hardware is included. Also included are detailed installation instructions. A gasketed seal around the sconce housing prevents moisture from entering the sconce housing. The sconce is designed to be installed between the mounting studs and provides low, ambient lighting. The sconce is designed to be installed between the mounting studs and provides low, ambient lighting. The sconce is designed to be installed between the mounting studs and provides low, ambient lighting.

FEATURES: The sconce is designed to be installed between the mounting studs and provides low, ambient lighting. The sconce is designed to be installed between the mounting studs and provides low, ambient lighting. The sconce is designed to be installed between the mounting studs and provides low, ambient lighting.

INSTALLATION: The sconce is designed to be installed between the mounting studs and provides low, ambient lighting. The sconce is designed to be installed between the mounting studs and provides low, ambient lighting. The sconce is designed to be installed between the mounting studs and provides low, ambient lighting.

ACCESSORY DIMENSIONS:

Accessories	Part Number	Description	Quantity
1. 1/2" x 1/2" x 1/2" x 1/2" x 1/2" x 1/2"	10000	1/2" x 1/2" x 1/2" x 1/2" x 1/2" x 1/2"	1
2. 1/2" x 1/2" x 1/2" x 1/2" x 1/2" x 1/2"	10001	1/2" x 1/2" x 1/2" x 1/2" x 1/2" x 1/2"	1

1 NTS LUMINAIRE TYPES "AAX"

GREENRIAR™ - SMALL (Version reflections are protected by U.S. Patent No. 6,864,376)

DESCRIPTION: The sconce housing is available in two sizes and is available in three finishes. All mounting hardware is included. Also included are detailed installation instructions. A gasketed seal around the sconce housing prevents moisture from entering the sconce housing. The sconce is designed to be installed between the mounting studs and provides low, ambient lighting. The sconce is designed to be installed between the mounting studs and provides low, ambient lighting. The sconce is designed to be installed between the mounting studs and provides low, ambient lighting.

FEATURES: The sconce is designed to be installed between the mounting studs and provides low, ambient lighting. The sconce is designed to be installed between the mounting studs and provides low, ambient lighting. The sconce is designed to be installed between the mounting studs and provides low, ambient lighting.

INSTALLATION: The sconce is designed to be installed between the mounting studs and provides low, ambient lighting. The sconce is designed to be installed between the mounting studs and provides low, ambient lighting. The sconce is designed to be installed between the mounting studs and provides low, ambient lighting.

ACCESSORY DIMENSIONS:

Accessories	Part Number	Description	Quantity
1. 1/2" x 1/2" x 1/2" x 1/2" x 1/2" x 1/2"	10000	1/2" x 1/2" x 1/2" x 1/2" x 1/2" x 1/2"	1
2. 1/2" x 1/2" x 1/2" x 1/2" x 1/2" x 1/2"	10001	1/2" x 1/2" x 1/2" x 1/2" x 1/2" x 1/2"	1

2 NTS LUMINAIRE TYPE "BB"

8" HORIZONTAL FLUORESCENT - CROSS BAFFLE

PRODUCT HIGHLIGHTS:

- Maximum quality glass reflector with a vertical cross baffle.
- 8" deep aluminum reflector assembly.
- Anodized aluminum reflector assembly.
- Horizontal cross baffle provides uniform light output.
- Anodized aluminum reflector assembly.
- Anodized aluminum reflector assembly.

INSTALLATION: The sconce is designed to be installed between the mounting studs and provides low, ambient lighting. The sconce is designed to be installed between the mounting studs and provides low, ambient lighting. The sconce is designed to be installed between the mounting studs and provides low, ambient lighting.

ACCESSORY DIMENSIONS:

Accessories	Part Number	Description	Quantity
1. 1/2" x 1/2" x 1/2" x 1/2" x 1/2" x 1/2"	10000	1/2" x 1/2" x 1/2" x 1/2" x 1/2" x 1/2"	1
2. 1/2" x 1/2" x 1/2" x 1/2" x 1/2" x 1/2"	10001	1/2" x 1/2" x 1/2" x 1/2" x 1/2" x 1/2"	1

4 NTS LUMINAIRE TYPE "DD"

EUCLID - OVAL

MINIMUM DIMENSIONS: EUM CB 26 CFL2 W 120 BRZ BB

DESCRIPTION: The sconce housing is available in two sizes and is available in three finishes. All mounting hardware is included. Also included are detailed installation instructions. A gasketed seal around the sconce housing prevents moisture from entering the sconce housing. The sconce is designed to be installed between the mounting studs and provides low, ambient lighting. The sconce is designed to be installed between the mounting studs and provides low, ambient lighting. The sconce is designed to be installed between the mounting studs and provides low, ambient lighting.

FEATURES: The sconce is designed to be installed between the mounting studs and provides low, ambient lighting. The sconce is designed to be installed between the mounting studs and provides low, ambient lighting. The sconce is designed to be installed between the mounting studs and provides low, ambient lighting.

INSTALLATION: The sconce is designed to be installed between the mounting studs and provides low, ambient lighting. The sconce is designed to be installed between the mounting studs and provides low, ambient lighting. The sconce is designed to be installed between the mounting studs and provides low, ambient lighting.

ACCESSORY DIMENSIONS:

Accessories	Part Number	Description	Quantity
1. 1/2" x 1/2" x 1/2" x 1/2" x 1/2" x 1/2"	10000	1/2" x 1/2" x 1/2" x 1/2" x 1/2" x 1/2"	1
2. 1/2" x 1/2" x 1/2" x 1/2" x 1/2" x 1/2"	10001	1/2" x 1/2" x 1/2" x 1/2" x 1/2" x 1/2"	1

2 NTS LUMINAIRE TYPE "BB"

EUCLID - OVAL

MINIMUM DIMENSIONS: EUM CB 26 CFL2 W 120 BRZ BB

DESCRIPTION: The sconce housing is available in two sizes and is available in three finishes. All mounting hardware is included. Also included are detailed installation instructions. A gasketed seal around the sconce housing prevents moisture from entering the sconce housing. The sconce is designed to be installed between the mounting studs and provides low, ambient lighting. The sconce is designed to be installed between the mounting studs and provides low, ambient lighting. The sconce is designed to be installed between the mounting studs and provides low, ambient lighting.

FEATURES: The sconce is designed to be installed between the mounting studs and provides low, ambient lighting. The sconce is designed to be installed between the mounting studs and provides low, ambient lighting. The sconce is designed to be installed between the mounting studs and provides low, ambient lighting.

INSTALLATION: The sconce is designed to be installed between the mounting studs and provides low, ambient lighting. The sconce is designed to be installed between the mounting studs and provides low, ambient lighting. The sconce is designed to be installed between the mounting studs and provides low, ambient lighting.

ACCESSORY DIMENSIONS:

Accessories	Part Number	Description	Quantity
1. 1/2" x 1/2" x 1/2" x 1/2" x 1/2" x 1/2"	10000	1/2" x 1/2" x 1/2" x 1/2" x 1/2" x 1/2"	1
2. 1/2" x 1/2" x 1/2" x 1/2" x 1/2" x 1/2"	10001	1/2" x 1/2" x 1/2" x 1/2" x 1/2" x 1/2"	1

Lantz-Boggio Architects, P.C.
 5650 DTC Pkwy, Suite 200 | Englewood, CO 80111
 Ph: 303.773.0438 | Fax: 303.773.8709

BrightStar Assisted Living Madison | Wisconsin

Owner:
 BRIGHTSTAR GROUP HOLDINGS
 1125 TRISTATE PARKWAY, SUITE 700
 GURNEE, IL 60031
 Ph: 847.693.2007
 JAYSON PEARL

Structural Engineer:
 JRSA HEDRICK & ASSOCIATES
 700 EAST BELLEVUE AVENUE
 ENGLEWOOD, CO 80111
 Ph: 303.830.1963
 STEVE JRSA

Electrical Engineer:
 JCSA CONSULTING ENGINEERS, LLC
 1372 DENVER WEST PARKWAY, SUITE 200
 LAKEWOOD, CO 80401
 Ph: 303.985.3800
 Ph: 303.987.2304
 JERRY ALBER

Mechanical/Plumbing Engineer:
 GIVEN & ASSOCIATES, INC.
 735 S. XENON CT., SUITE 201
 LAKEWOOD, CO 80226
 Ph: 303.716.1270
 Ph: 303.716.1272
 JEFF GIVEN

Civil Engineer:
 LYNCH & ASSOCIATES
 5482 WESTFRIDGE DRIVE
 NEW BERLIN, WI 53151
 Ph: 262.452.0540
 TIMOTHY LYNCH

Landscape Architect:
 THE BRUCE COMPANY
 2830 PARKMETER STREET
 P.O. BOX 635030
 MIDDLETON, WI 53562
 Ph: 608.836.7041
 DANA PETT

Issued For:

Item	Date	Description
1.	04.04.2012	Planning Department Submittal

Scale:

Scale	Description
1/4" = 1'-0"	Overall Dimensions
1/8" = 1'-0"	Detail Dimensions

Key Plan:

LBA Project Number: 2011.48
 Date: APRIL 4, 2012

LUMINAIRE SPECIFICATIONS

E-2