





PROJECT NAME
**727 LORILLARD
 RESIDENTIAL
 APARTMENT**

PROJECT ADDRESS
**727 LORILLARD COURT
 MADISON, WISCONSIN 53703**



ARCHITECT
 VALERIO DEWALT TRAIN ASSOC.
 500 N. DEARBORN, 5TH FLOOR
 CHICAGO, ILLINOIS 60654
 312.260.7300
 www.valeriodt.com

PROJECT TEAM ARCHITECT STAMP

VOTA PROJECT NUMBER
 11101.00

CONSULTANT

CONSULTANT PROJECT NUMBER

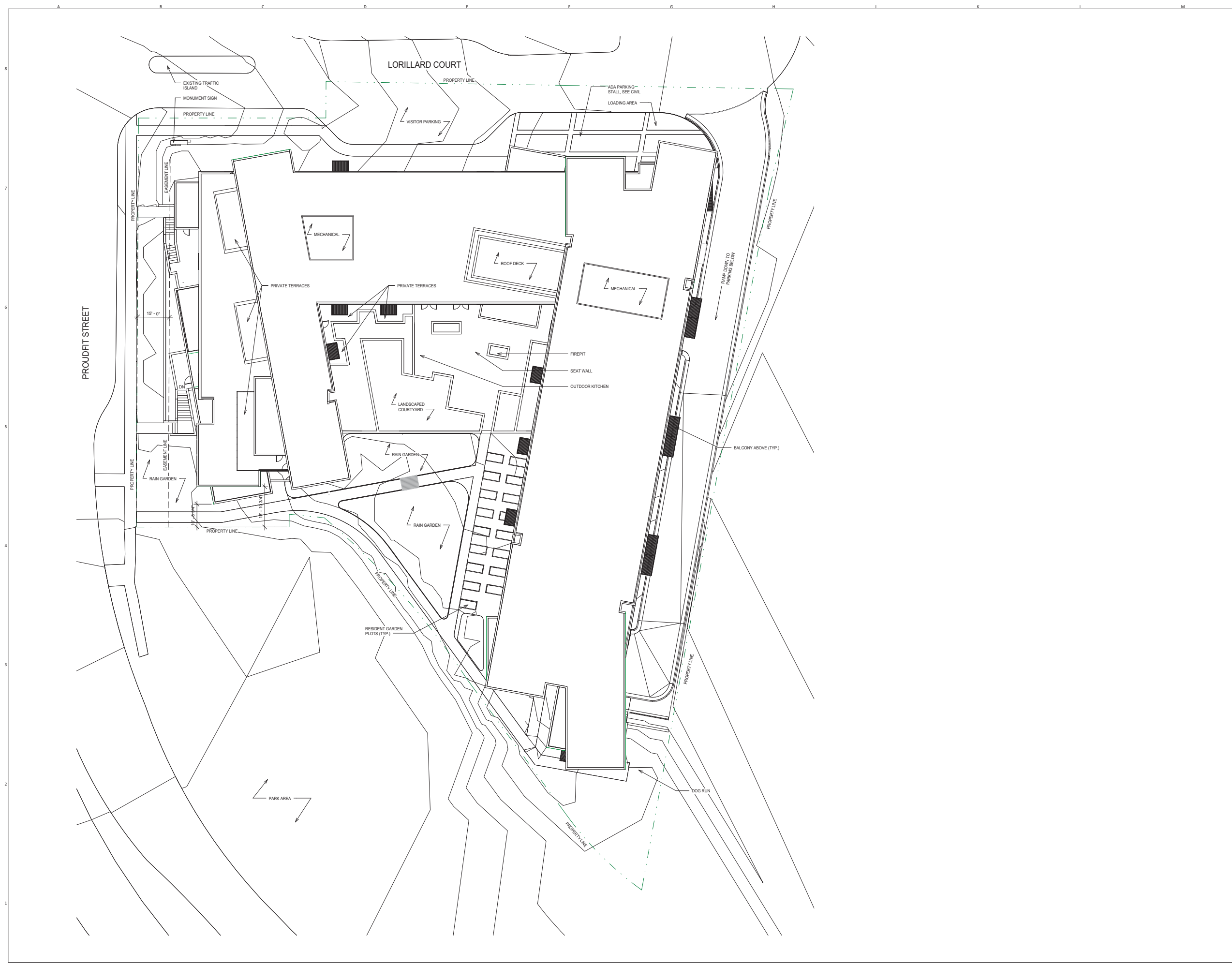
Issue		
No.	Issued for	Date
1	PLAN COM/UDC	03.07.2012

© 2012 VALERIO DEWALT TRAIN ASSOCIATES, INC

SHEET TITLE
SITE PLAN



SHEET NUMBER
A0-01



PROJECT NAME
**727 LORILLARD
 RESIDENTIAL
 APARTMENT**

PROJECT ADDRESS
**727 LORILLARD COURT
 MADISON, WISCONSIN 53703**



ARCHITECT
 VALERIO DEWALT TRAIN ASSOC.
 500 N. DEARBORN, 9TH FLOOR
 CHICAGO, ILLINOIS 60654
 312.260.7300
 www.buildordie.com

PROJECT TEAM ARCHITECT STAMP

VDTA PROJECT NUMBER
 11101.00

CONSULTANT

CONSULTANT PROJECT NUMBER

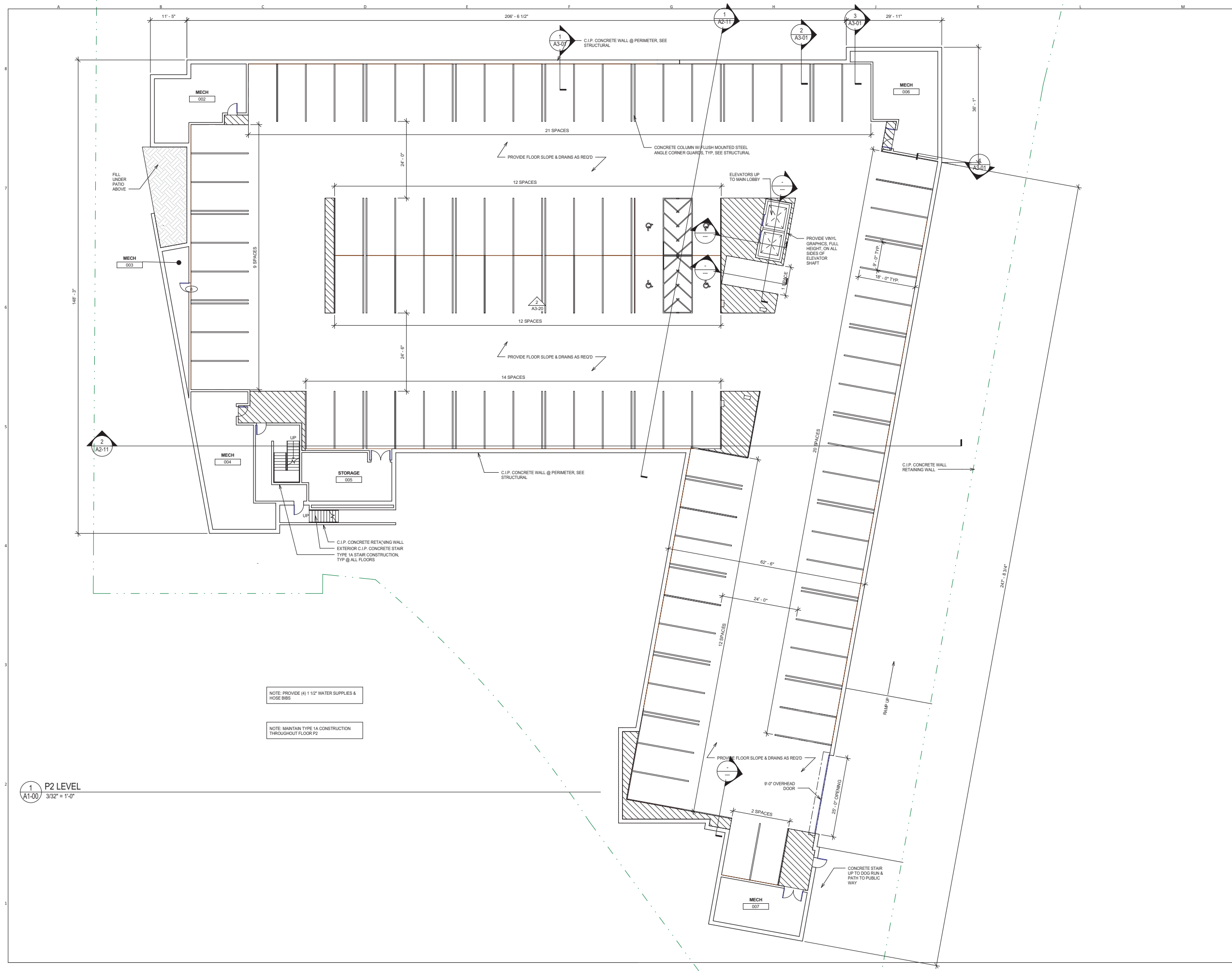
Issue		
No.	Issued for	Date
1	ISSUED FOR PRICING	02.01.2012
2	PLAN COM/UDC	03.07.2012

© 2012 VALERIO DEWALT TRAIN ASSOCIATES, INC

SHEET TITLE
FLOOR PLAN - LEVEL P2



SHEET NUMBER
A1-00



NOTE: PROVIDE (4) 1 1/2" WATER SUPPLIES & HOSE BIBS

NOTE: MAINTAIN TYPE 1A CONSTRUCTION THROUGHOUT FLOOR P2

1 P2 LEVEL
 A1-00 3/32" = 1'-0"

PROJECT NAME
727 LORILLARD RESIDENTIAL APARTMENT

PROJECT ADDRESS
727 LORILLARD COURT
MADISON, WISCONSIN 53703



ARCHITECT
 VALERIO DEWALT TRAIN ASSOC.
 500 N. DEARBORN, 9TH FLOOR
 CHICAGO, ILLINOIS 60654
 312.260.7300
 www.buildordie.com

PROJECT TEAM **ARCHITECT STAMP**

NOTA PROJECT NUMBER
 11101.00

CONSULTANT

CONSULTANT PROJECT NUMBER

No.	Issue Issued for	Date
1	ISSUED FOR PRICING	02.01.2012
2	PLAN COM/UDC	03.07.2012

© 2012 VALERIO DEWALT TRAIN ASSOCIATES, INC

SHEET TITLE
FLOOR PLAN - LEVEL 1



SHEET NUMBER
A1-01



1 LEVEL 1
 3/32" = 1'-0"

NOTE: GC TO INCLUDE DEMOLITION OF THREE EXISTING HOUSES ON PROJECT SITE IN BUDGET.

NOTE: AT FLOOR 01 ONLY, MAINTAIN TYPE SA CONSTRUCTION WEST OF LOBBY AND TYPE 1A CONSTRUCTION EAST OF LOBBY. SEE PLAN, LINK.

NOTE: PROVIDE (4) 1 1/2" WATER SUPPLIES & HOSE BIBS IN GARAGE

PROJECT NAME
**727 LORILLARD
 RESIDENTIAL
 APARTMENT**

PROJECT ADDRESS
**727 LORILLARD COURT
 MADISON, WISCONSIN 53703**



ARCHITECT
 VALERIO DEWALT TRAIN ASSOC.
 500 N. DEARBORN, 9TH FLOOR
 CHICAGO, ILLINOIS 60654
 312.260.7300
 www.builtordie.com

PROJECT TEAM ARCHITECT STAMP

VOTA PROJECT NUMBER
 11101.00

CONSULTANT

CONSULTANT PROJECT NUMBER

Issue		
No.	Issued for	Date
1	ISSUED FOR PRICING	02.01.2012
2	PLAN COM/UDC	03.07.2012

© 2012 VALERIO DEWALT TRAIN ASSOCIATES, INC

SHEET TITLE
FLOOR PLAN - LEVEL 2



SHEET NUMBER
A1-02



NOTE: MAINTAIN TYPE SA CONSTRUCTION THROUGHOUT FLOOR 02, U.N.O.

1 Level 2
 A1-02 3/32" = 1'-0"

PROJECT NAME
**727 LORILLARD
 RESIDENTIAL
 APARTMENT**

PROJECT ADDRESS
**727 LORILLARD COURT
 MADISON, WISCONSIN 53703**



ARCHITECT
 VALERIO DEWALT TRAIN ASSOC.
 500 N. DEARBORN, 9TH FLOOR
 CHICAGO, ILLINOIS 60654
 312.260.7300
 www.builtordie.com

PROJECT TEAM ARCHITECT STAMP

VOTA PROJECT NUMBER
 11101.00

CONSULTANT

CONSULTANT PROJECT NUMBER

Issue		
No.	Issued for	Date
1	ISSUED FOR PRICING	02.01.2012
2	PLAN COM/UDC	03.07.2012

© 2012 VALERIO DEWALT TRAIN ASSOCIATES, INC

SHEET TITLE
FLOOR PLAN - LEVEL 3



SHEET NUMBER
A1-03



1 LEVEL 3
 A1-03 3/32" = 1'-0"

PROJECT NAME
**727 LORILLARD
 RESIDENTIAL
 APARTMENT**

PROJECT ADDRESS
**727 LORILLARD COURT
 MADISON, WISCONSIN 53703**



ARCHITECT
 VALERIO DEWALT TRAIN ASSOC.
 500 N. DEARBORN, 9TH FLOOR
 CHICAGO, ILLINOIS 60654
 312.260.7300
 www.builtordie.com

PROJECT TEAM ARCHITECT STAMP

VDTA PROJECT NUMBER
 11101.00

CONSULTANT

CONSULTANT PROJECT NUMBER

Issue		
No.	Issued for	Date
1	ISSUED FOR PRICING	02.01.2012
2	PLAN COM/UDC	03.07.2012

© 2012 VALERIO DEWALT TRAIN ASSOCIATES, INC

SHEET TITLE
FLOOR PLAN - LEVEL 4



SHEET NUMBER
A1-04



PROJECT NAME
**727 LORILLARD
 RESIDENTIAL
 APARTMENT**

PROJECT ADDRESS
**727 LORILLARD COURT
 MADISON, WISCONSIN 53703**



ARCHITECT
 VALERIO DEWALT TRAIN ASSOC.
 500 N. DEARBORN, 9TH FLOOR
 CHICAGO, ILLINOIS 60654
 312.260.7300
 www.buildordie.com

PROJECT TEAM ARCHITECT STAMP

VDTA PROJECT NUMBER
 11101.00

CONSULTANT

CONSULTANT PROJECT NUMBER

Issue		
No.	Issued for	Date
1	ISSUED FOR PRICING	02.01.2012
2	PLAN COM/UDC	03.07.2012

© 2012 VALERIO DEWALT TRAIN ASSOCIATES, INC

SHEET TITLE
FLOOR PLAN - LEVEL 5



SHEET NUMBER
A1-05



1 LEVEL 5
 A1-05 3/32" = 1'-0"

PROJECT NAME
**727 LORILLARD
 RESIDENTIAL
 APARTMENT**

PROJECT ADDRESS
**727 LORILLARD COURT
 MADISON, WISCONSIN 53703**



ARCHITECT
 VALERIO DEWALT TRAIN ASSOC.
 500 N. DEARBORN, 9TH FLOOR
 CHICAGO, ILLINOIS 60654
 312.260.7300
 www.buildordie.com

PROJECT TEAM ARCHITECT STAMP

VDTA PROJECT NUMBER
 11101.00

CONSULTANT

CONSULTANT PROJECT NUMBER

Issue		
No.	Issued for	Date
1	ISSUED FOR PRICING	02.01.2012
2	PLAN COM/UDC	03.07.2012

© 2012 VALERIO DEWALT TRAIN ASSOCIATES, INC

SHEET TITLE
ROOF PLAN



SHEET NUMBER
A1-06



NOTE: MAINTAIN TYPE SA CONSTRUCTION THROUGHOUT ROOF LEVEL. U.N.O.

GENERAL NOTES

- ALL EXTERIOR MATERIALS TO BE NON-COMBUSTIBLE RATING.
- AT ALL EXTERIOR WALLS, PROVIDE 2" RIGID INSULATION OUTBOARD OF STUD IN ADDITION TO BATT INSULATION LOCATED IN STUD CAVITY.
- PROVIDE EXPANSION JOINTS AT FB-1 WALL FINISH TYPE PER MANUFACTURER RECOMMENDATIONS.
- PROVIDE OPERABLE VENT (AWNING TYPE) AT EACH BEDROOM AND LIVING ROOM OF APARTMENTS.
- SEE 4/A3-11 FOR TYPICAL ROOF COPING DETAIL.

EXTERIOR MATERIAL LEGEND

AL-1	ALUMINUM STICK-BUILT FRAME WINDOW ASSEMBLY (TRACO OR SIMILAR)
AL-2	ALUMINUM FRAME WINDOW ASSEMBLY (W/ 6" FRAME & VERT MULLION, 7'-4"x7'-4" M.O., TRACO OR SIMILAR)
AL-3	SHEET ALUMINUM FASCIA TO MATCH AL-1
AL-4	HORIZONTAL CABLE RAIL, MAX SPACING 4"
AL-5	ALUMINUM STICK-BUILT WINDOW-HALL
AL-6	ARCHITECTURAL GRADE ALUMINUM LOUVERS
GL-1	1" INSULATED GLAZING W/ LOW E COATING (PROVIDE TEMPERED GLAZING BELOW 18" AFF)
MTL-1	ETTEL AND FRANZ TYPE 2 CRIMPED STYLE ALUMINUM SHINGLE
FB-1	FACE BRICK (NORMAN STYLE)
FCP-1	FIBER CEMENT PANEL (HARDIE PLANK SIDING) - USED AT INSIDE BALCONY WALLS AND SOFFITS AT "TUBE"
CT-1	CAST-IN-PLACE CONCRETE WALL W/ OFF-FORM FINISH
INS-1	2" POLYISO INSULATION
INS-2	2" POLYISO INSULATION W/ 7/16" NAILED SURFACE
INS-3	5" POLYISO ROOF INSULATION OVER SLOPED ROOF STRUCTURE
INS-4	BATT INSULATION
AWB-1	AIR / WEATHER BARRIER
VB-1	VAPOR BARRIER

PROJECT NAME
727 LORILLARD RESIDENTIAL APARTMENT

PROJECT ADDRESS
**727 LORILLARD COURT
 MADISON, WISCONSIN 53703**



ARCHITECT
 VALERIO DEWALT TRAIN ASSOC.
 500 N. DEARBORN, 9TH FLOOR
 CHICAGO, ILLINOIS 60654
 312.260.7300
 www.buildforte.com

PROJECT TEAM **ARCHITECT STAMP**

NOTA PROJECT NUMBER
 11101.00

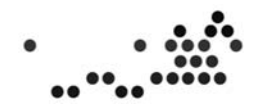
CONSULTANT

CONSULTANT PROJECT NUMBER

No.	Issue	Issued for	Date
1	ISSUED FOR PRICING		02.01.2012
2	PLAN COM/UDC		03.07.2012

© 2012 VALERIO DEWALT TRAIN ASSOCIATES, INC

SHEET TITLE
EXTERIOR ELEVATIONS



SHEET NUMBER
A2-01



2 West Elevation (Railroad Wing)
 A2-01 3/32" = 1'-0"



1 East Elevation (Railroad Wing)
 A2-01 3/32" = 1'-0"

GENERAL NOTES

- ALL EXTERIOR MATERIALS TO BE NON-COMBUSTIBLE RATING.
- AT ALL EXTERIOR WALLS, PROVIDE 2" RIGID INSULATION OUTBOARD OF STUD IN ADDITION TO BATT INSULATION LOCATED IN STUD CAVITY.
- PROVIDE EXPANSION JOINTS AT FB-1 WALL FINISH TYPE PER MANUFACTURER RECOMMENDATIONS.
- PROVIDE OPERABLE VENT (AWNING TYPE) AT EACH BEDROOM AND LIVING ROOM OF APARTMENTS.
- SEE 4/A3-11 FOR TYPICAL ROOF COPING DETAIL.

EXTERIOR MATERIAL LEGEND

AL-1	ALUMINUM STICK-BUILT FRAME WINDOW ASSEMBLY (TRACO OR SIMILAR)
AL-2	ALUMINUM FRAME WINDOW ASSEMBLY (W/ 6" FRAME & VERT MULLION, 7'-4"x7'-4" M.O., TRACO OR SIMILAR)
AL-3	SHEET ALUMINUM FASCIA TO MATCH AL-1
AL-4	HORIZONTAL CABLE RAIL, MAX SPACING 4"
AL-5	ALUMINUM STICK-BUILT WINDOW-HALL
AL-6	ARCHITECTURAL GRADE ALUMINUM LOUVERS
GL-1	1" INSULATED GLAZING W/ LOW E COATING (PROVIDE TEMPERED GLAZING BELOW 18" AFF)
MTL-1	ETTEL AND FRANZ TYPE 2 CRIMPED STYLE ALUMINUM SHINGLE
FB-1	FACE BRICK (NORMAN STYLE)
FCP-1	FIBER CEMENT PANEL (HARDIE PLANK SIDING) - USED AT INSIDE BALCONY WALLS AND SOFFITS AT TUBE
CT-1	CAST-IN-PLACE CONCRETE WALL W/ OFF-FORM FINISH
INS-1	2" POLYISO INSULATION
INS-2	2" POLYISO INSULATION W/ 7/16" NAILED SURFACE
INS-3	5" POLYISO ROOF INSULATION OVER SLOPED ROOF STRUCTURE
INS-4	BATT INSULATION
AWB-1	AIR / WEATHER BARRIER
VB-1	VAPOR BARRIER

PROJECT NAME
727 LORILLARD RESIDENTIAL APARTMENT

PROJECT ADDRESS
727 LORILLARD COURT
MADISON, WISCONSIN 53703



ARCHITECT
 VALERIO DEWALT TRAIN ASSOC.
 500 N. DEARBORN, 9TH FLOOR
 CHICAGO, ILLINOIS 60654
 312.260.7300
 www.builtordie.com

PROJECT TEAM **ARCHITECT STAMP**

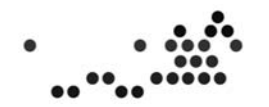
CONSULTANT

CONSULTANT PROJECT NUMBER

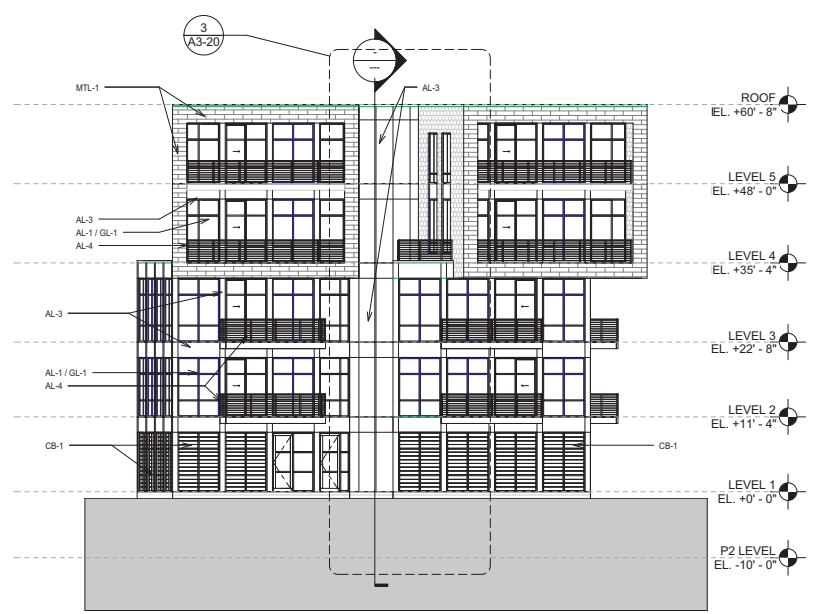
Issue		
No.	Issued for	Date
1	ISSUED FOR PRICING	02.01.2012
2	PLAN COM/UDC	03.07.2012

© 2012 VALERIO DEWALT TRAIN ASSOCIATES, INC

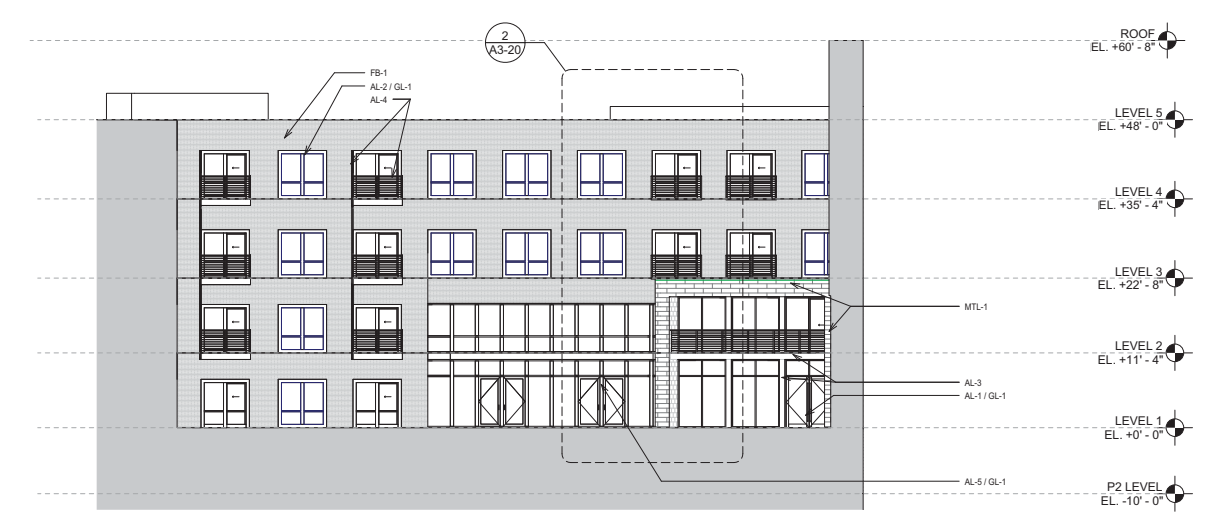
SHEET TITLE
EXTERIOR ELEVATIONS



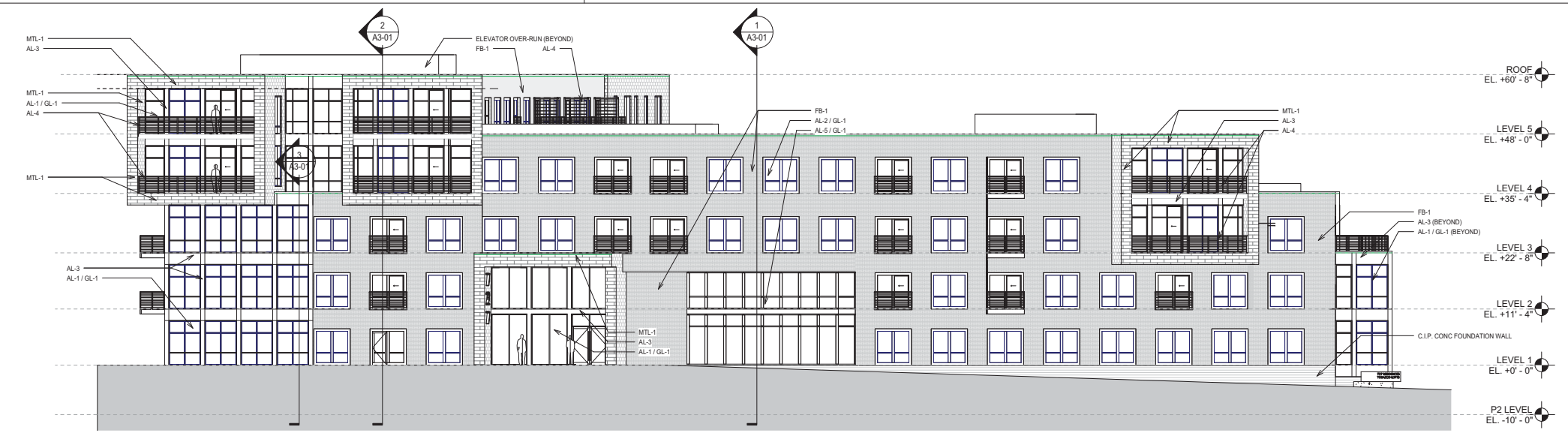
SHEET NUMBER
A2-02



1 South Elevation (Railroad Wing)
 A2-02 3/32" = 1'-0"



3 South Elevation (Lorillard Wing)
 A2-02 3/32" = 1'-0"



2 North Elevation
 A2-02 3/32" = 1'-0"

GENERAL NOTES

- ALL EXTERIOR MATERIALS TO BE NON-COMBUSTIBLE RATING.
- AT ALL EXTERIOR WALLS, PROVIDE 2" RIGID INSULATION OUTBOARD OF STUD IN ADDITION TO BATT INSULATION LOCATED IN STUD CAVITY.
- PROVIDE EXPANSION JOINTS AT FB-1 WALL FINISH TYPE PER MANUFACTURER RECOMMENDATIONS.
- PROVIDE OPERABLE VENT (WINNING TYPE) AT EACH BEDROOM AND LIVING ROOM OF APARTMENTS.
- SEE 41A3-11 FOR TYPICAL ROOF COPING DETAIL.

EXTERIOR MATERIAL LEGEND

AL-1	ALUMINUM STICK-BUILT FRAME WINDOW ASSEMBLY (TRACO OR SIMILAR)
AL-2	ALUMINUM FRAME WINDOW ASSEMBLY (W/ 6" FRAME & VERT MULLION, 7'-4"x7'-4" M.O., TRACO OR SIMILAR)
AL-3	SHEET ALUMINUM FASCIA TO MATCH AL-1
AL-4	HORIZONTAL CABLE RAIL MAX SPACING 4"
AL-5	ALUMINUM STICK-BUILT WINDOW-HALL
AL-6	ARCHITECTURAL GRADE ALUMINUM LOUVERS
GL-1	1" INSULATED GLAZING W/ LOW E COATING (PROVIDE TEMPERED GLAZING BELOW 18" AFF)
MTL-1	ETTEL AND FRANZ TYPE 2 CRIMPED STYLE ALUMINUM SHINGLE
FB-1	FACE BRICK (NORMAN STYLE)
FCP-1	FIBER CEMENT PANEL (HARDIE PLANK SIDING) - USED AT INSIDE BALCONY WALLS AND SOFFITS AT TUBE
CT-1	CAST-IN-PLACE CONCRETE WALL W/ OFF-FORM FINISH
INS-1	2" POLYISO INSULATION
INS-2	2" POLYISO INSULATION W/ 7/16" NAILABLE SURFACE
INS-3	5" POLYISO ROOF INSULATION OVER SLOPED ROOF STRUCTURE
INS-4	BATT INSULATION
AWB-1	AIR / WEATHER BARRIER
VB-1	VAPOR BARRIER

PROJECT NAME
727 LORILLARD RESIDENTIAL APARTMENT
PROJECT ADDRESS
727 LORILLARD COURT
MADISON, WISCONSIN 53703



ARCHITECT
 VALERIO DEWALT TRAIN ASSOC.
 500 N. DEARBORN, 9TH FLOOR
 CHICAGO, ILLINOIS 60654
 312.260.7300
 www.buildordie.com

PROJECT TEAM **ARCHITECT STAMP**

VOTA PROJECT NUMBER
 11101.00

CONSULTANT

CONSULTANT PROJECT NUMBER

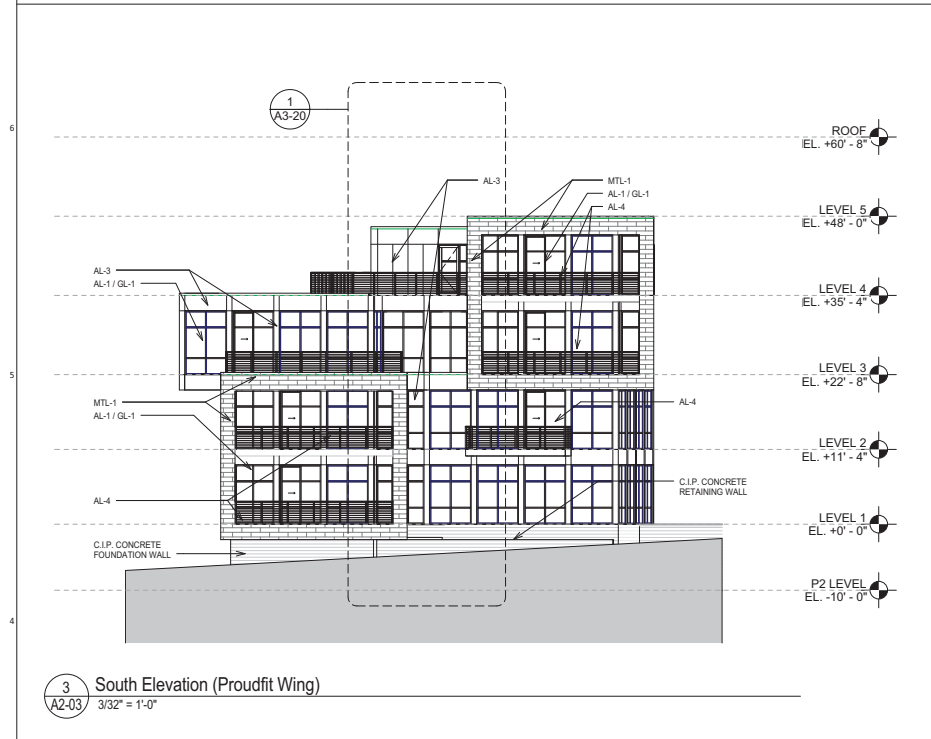
No.	Issue	Issued for	Date
1	ISSUED FOR PRICING		02.01.2012
2	PLAN COM/UDC		03.07.2012

© 2012 VALERIO DEWALT TRAIN ASSOCIATES, INC

SHEET TITLE
EXTERIOR ELEVATIONS



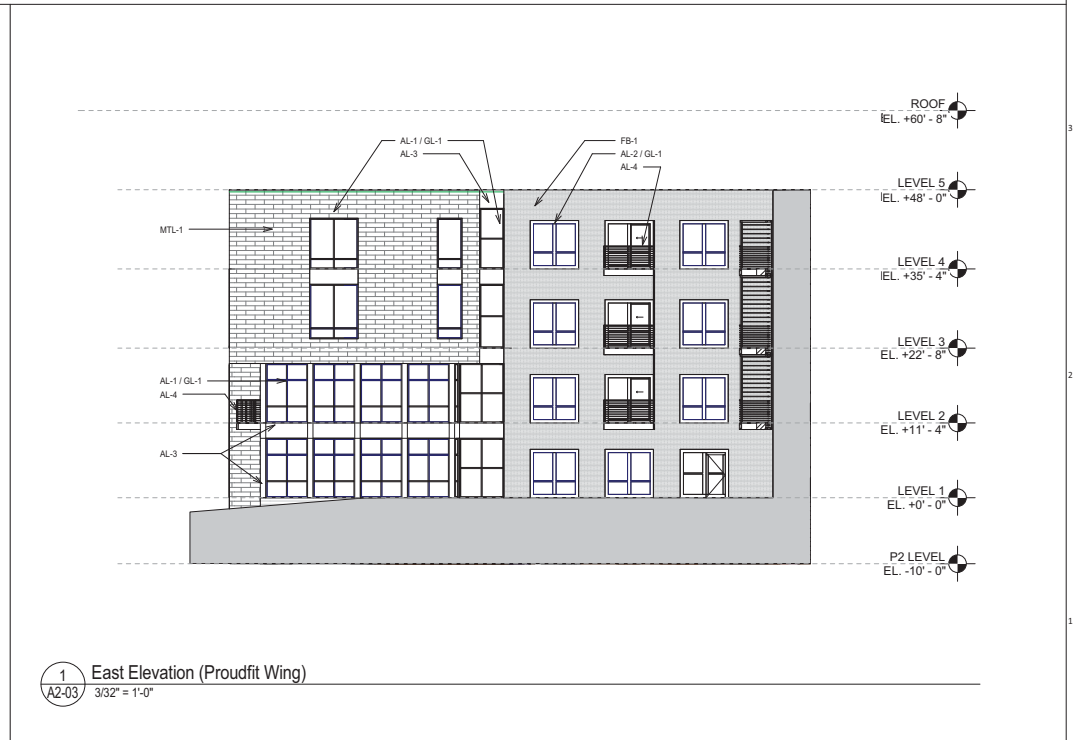
SHEET NUMBER
A2-03



3 South Elevation (Proudfit Wing)
 3/32" = 1'-0"



2 West Elevation (Proudfit Wing)
 3/32" = 1'-0"



1 East Elevation (Proudfit Wing)
 3/32" = 1'-0"



ARCHITECT
 VALERIO DEWALT TRAIN ASSOC.
 500 N. DEARBORN, 8TH FLOOR
 CHICAGO, ILLINOIS 60654
 312.260.7300
 www.buildordie.com
 PROJECT TEAM ARCHITECT STAMP

VOTA PROJECT NUMBER
 11101.00

CONSULTANT

CONSULTANT PROJECT NUMBER

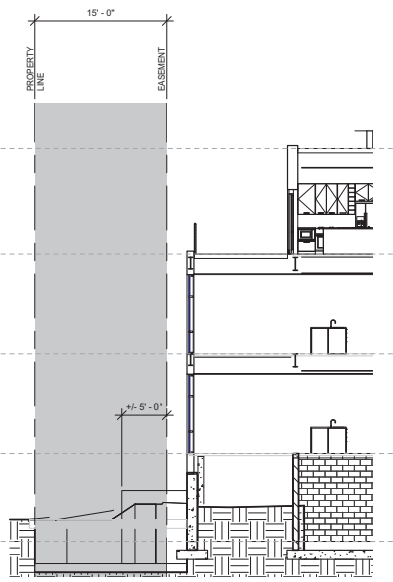
Issue		
No.	Issued for	Date
1	PLAN COM/UDC	03.07.2012

© 2012 VALERIO DEWALT TRAIN ASSOCIATES, INC.

SHEET TITLE
**EASEMENT PLAN AND
 SECTIONS**



1 SECTION
 A3-11 1/8" = 1'-0"

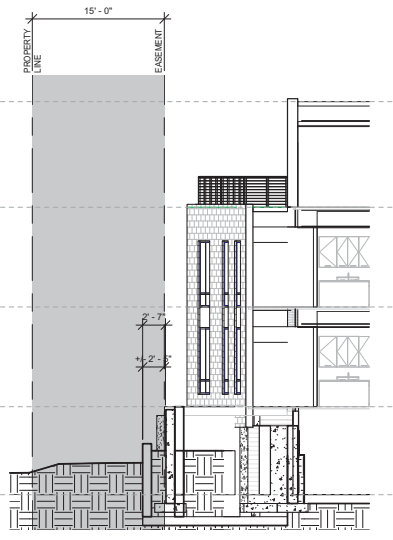


2 SECTION
 A3-11 1/8" = 1'-0"

- LEVEL 4
EL. +35'-4"
- LEVEL 3
EL. +22'-8"
- LEVEL 2
EL. +11'-4"
- LEVEL 1
EL. +0'-0"
- P2 LEVEL
EL. -10'-0"

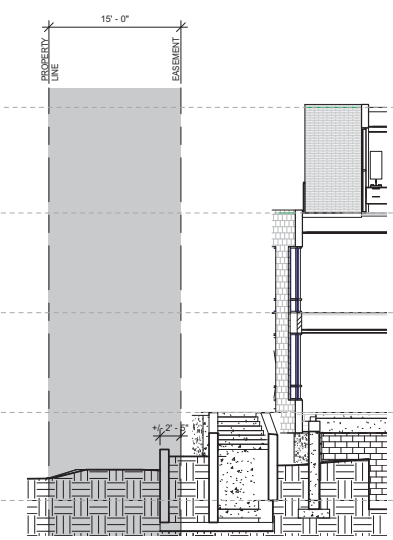


3 SECTION
 A3-11 1/8" = 1'-0"

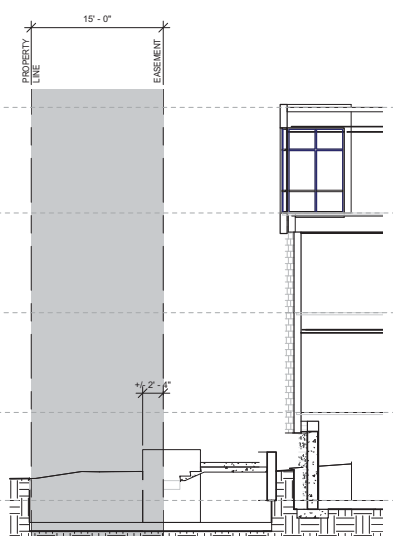


4 SECTION
 A3-11 1/8" = 1'-0"

- LEVEL 4
EL. +35'-4"
- LEVEL 3
EL. +22'-8"
- LEVEL 2
EL. +11'-4"
- LEVEL 1
EL. +0'-0"
- P2 LEVEL
EL. -10'-0"

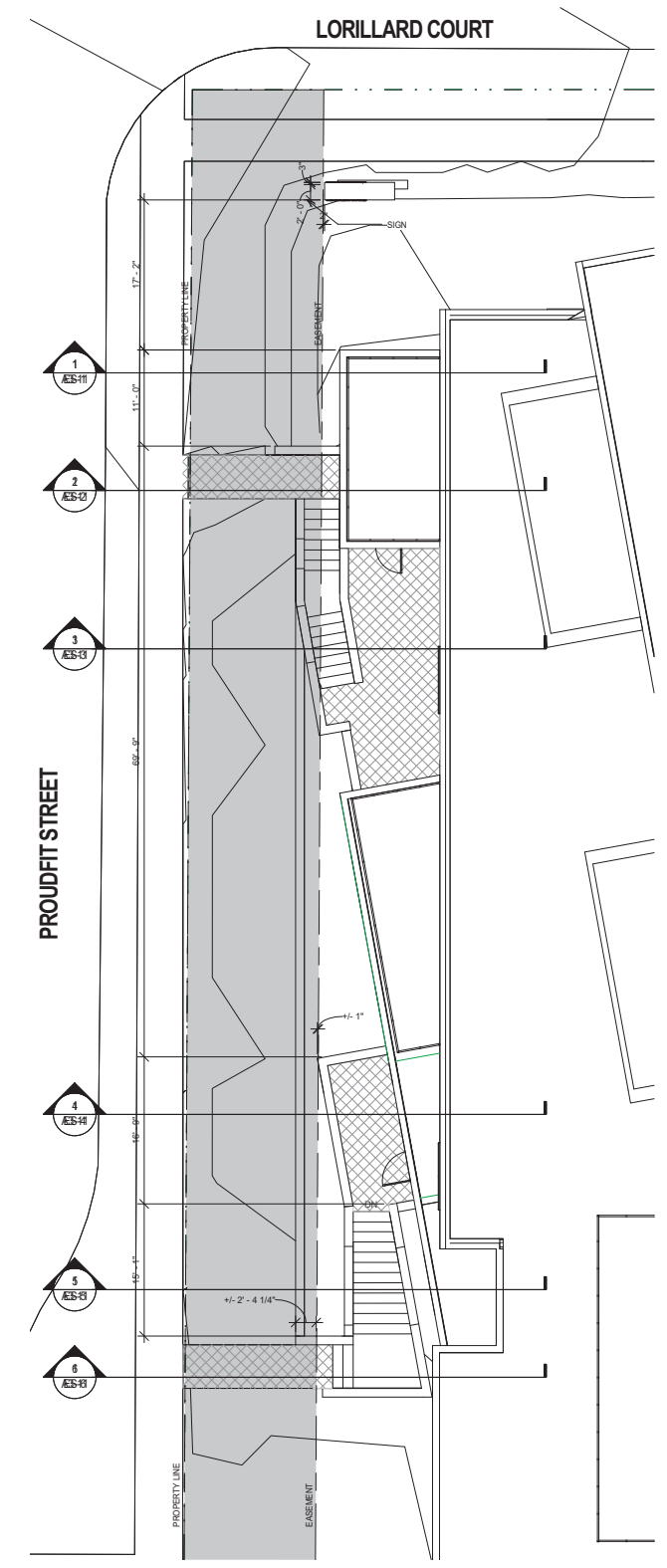


5 SECTION
 A3-11 1/8" = 1'-0"

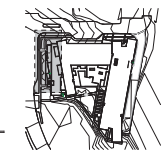


6 SECTION
 A3-11 1/8" = 1'-0"

- LEVEL 4
EL. +35'-4"
- LEVEL 3
EL. +22'-8"
- LEVEL 2
EL. +11'-4"
- LEVEL 1
EL. +0'-0"
- P2 LEVEL
EL. -10'-0"



7 EASEMENT PLAN
 A3-11 1/8" = 1'-0"



KEY PLAN



ARCHITECT
 VALERIO DEWALT TRAIN ASSOC.
 500 N. DEARBORN, 5TH FLOOR
 CHICAGO, ILLINOIS 60654
 312.260.7300
 www.valeriodt.com

VOTA PROJECT NUMBER
 11101.00

CONSULTANT

CONSULTANT PROJECT NUMBER

Issue		
No.	Issued for	Date
1	PLAN COM/UDC	03.07.2012

© 2012 VALERIO DEWALT TRAIN ASSOCIATES, INC.

SHEET TITLE
ENLARGED ELEVATIONS



SHEET NUMBER
A3-20

GENERAL NOTES

- ALL EXTERIOR MATERIALS TO BE NON-COMBUSTIBLE RATING.
- AT ALL EXTERIOR WALLS, PROVIDE 2" RIGID INSULATION OUTBOARD OF STUD IN ADDITION TO BATT INSULATION LOCATED IN STUD CAVITY.
- PROVIDE EXPANSION JOINTS AT FB-1 WALL FINISH TYPE PER MANUFACTURER RECOMMENDATIONS.
- PROVIDE OPERABLE VENT (AWNING TYPE) AT EACH BEDROOM AND LIVING ROOM OF APARTMENTS.
- SEE 4/A3-11 FOR TYPICAL ROOF COPING DETAIL.

EXTERIOR MATERIAL LEGEND

AL-1	ALUMINUM STICK-BUILT FRAME WINDOW ASSEMBLY (TRACO OR SIMILAR)
AL-2	ALUMINUM FRAME WINDOW ASSEMBLY (W/ 6" FRAME & VERT MULLION, 7'-4"x7'-4" M.O., TRACO OR SIMILAR)
AL-3	SHEET ALUMINUM FASCIA TO MATCH AL-1
AL-4	HORIZONTAL CABLE RAIL MAX SPACING 4"
AL-5	ALUMINUM STICK-BUILT WINDOW-HALL
AL-6	ARCHITECTURAL GRADE ALUMINUM LOUVERS
GL-1	1" INSULATED GLAZING W/ LOW E COATING (PROVIDE TEMPERED GLAZING BELOW 18" AFF)
MTL-1	ETTEL AND FRANZ TYPE 2 CRIMPED STYLE ALUMINUM SHINGLE
FB-1	FACE BRICK (NORMAN STYLE)
FCP-1	FIBER CEMENT PANEL (HARDIE PLANK SIDING) - USED AT INSIDE BALCONY WALLS AND SOFFITS AT TUBE
CT-1	CAST-IN-PLACE CONCRETE WALL W/ OFF-FORM FINISH
INS-1	2" POLYISO INSULATION
INS-2	2" POLYISO INSULATION W/ 7/16" NAILED SURFACE
INS-3	5" POLYISO ROOF INSULATION OVER SLOPED ROOF STRUCTURE
INS-4	BATT INSULATION
AWB-1	AIR / WEATHER BARRIER
VB-1	VAPOR BARRIER



1 Enlarged South Elevation (Proudfit Wing)
 A3-20 1/4" = 1'-0"

2 Enlarged South Elevation (Lorillard Wing)
 A3-20 1/4" = 1'-0"

3 Enlarged South Elevation (Railroad Wing)
 A3-20 1/4" = 1'-0"

4 Enlarged East Elevation (Railroad Wing)
 A3-20 1/4" = 1'-0"



ARCHITECT
 VALERIO DEWALT TRAIN ASSOC.
 500 N. DEARBORN, 5TH FLOOR
 CHICAGO, ILLINOIS 60654
 312.260.7300
 www.buildordie.com
 PROJECT TEAM ARCHITECT STAMP

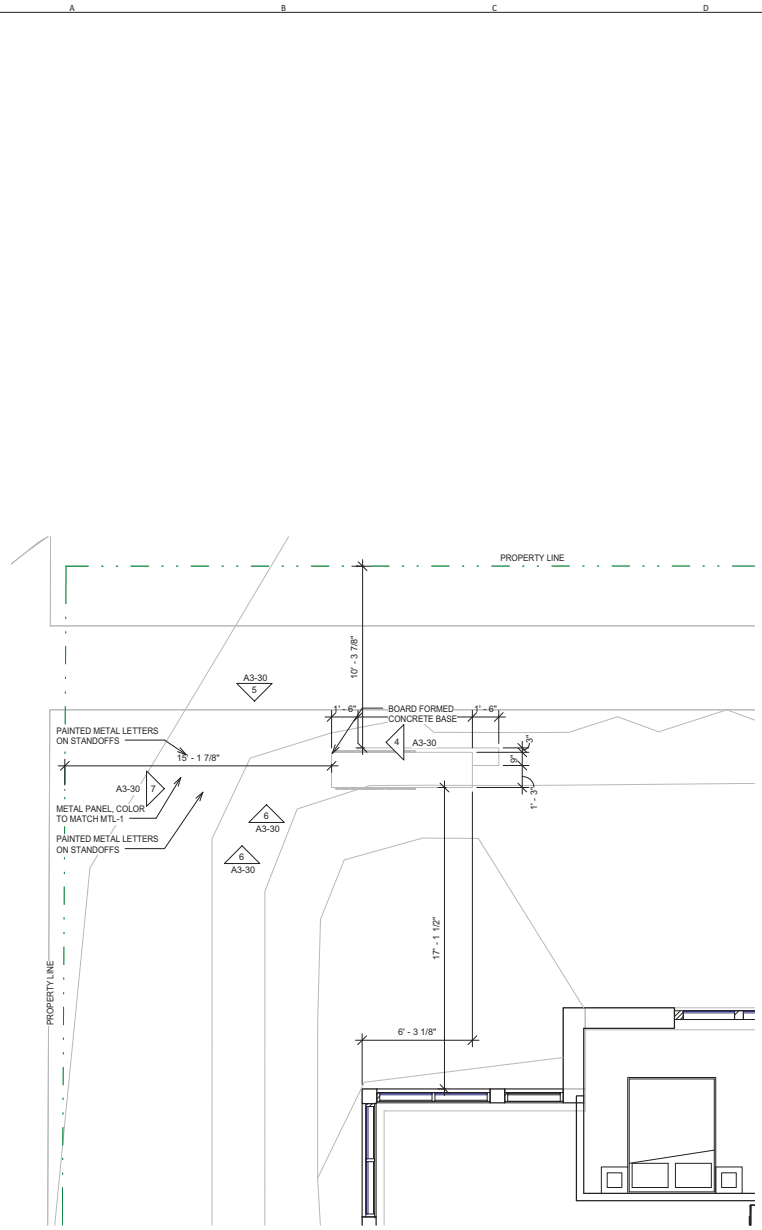
VOTA PROJECT NUMBER
 11101.00
 CONSULTANT

CONSULTANT PROJECT NUMBER

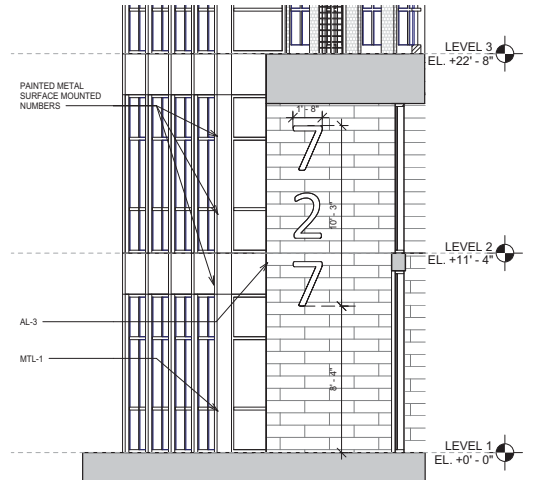
Issue		
No.	Issued for	Date
1	PLAN COM/UDC	03.07.2012

© 2012 VALERIO DEWALT TRAIN ASSOCIATES, INC.

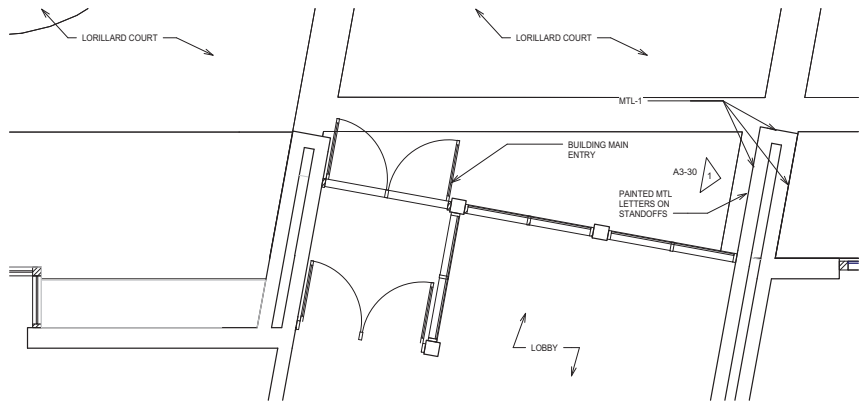
SHEET TITLE
**SIGNAGE PLANS AND
 ELEVATIONS**



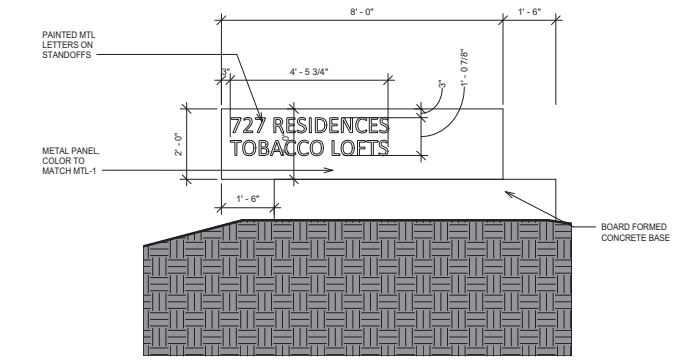
3 MONUMENT SIGN - SITE PLAN
 A3-30 1/4" = 1'-0"



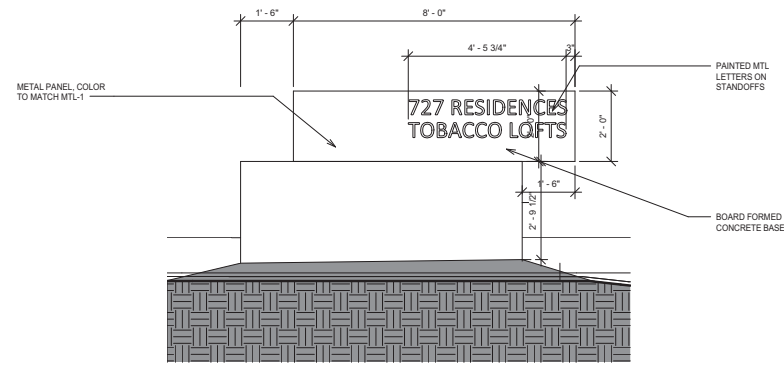
1 MAIN ENTRY SIGNAGE ELEVATION
 A3-30 1/4" = 1'-0"



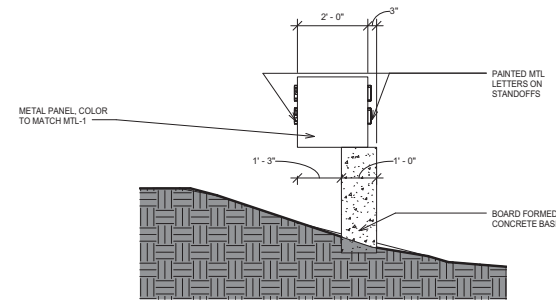
2 MAIN ENTRY SIGNAGE - SITE PLAN
 A3-30 1/4" = 1'-0"



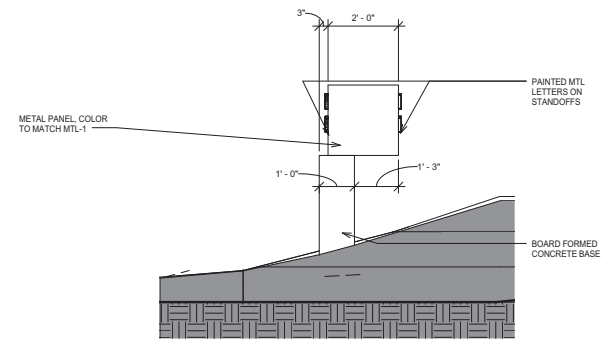
6 MONUMENT SIGN ELEVATION - SOUTH
 A3-30 1/2" = 1'-0"



5 MONUMENT SIGN ELEVATION - NORTH
 A3-30 1/2" = 1'-0"



4 MONUMENT SIGN ELEVATION - EAST
 A3-30 1/2" = 1'-0"



7 MONUMENT SIGN ELEVATION - WEST
 A3-30 1/2" = 1'-0"

727 LORILLARD

URBAN DESIGN & PLAN COMMISSION SUBMITTAL

PROJECT NAME
727 LORILLARD
RESIDENTIAL
APARTMENT

PROJECT ADDRESS
727 LORILLARD COURT
MADISON, WISCONSIN 53703



ARCHITECT
 VALERIO DEWALT TRAIN ASSOC.
 500 N. DEARBORN, 8TH FLOOR
 CHICAGO, ILLINOIS 60654
 312.260.7300
 www.valdortie.com

PROJECT TEAM **ARCHITECT STAMP**

VOTA PROJECT NUMBER
 11101.00

CONSULTANT

CONSULTANT PROJECT NUMBER

Issue		
No.	Issued for	Date
1	PLAN COM/UDC	03.07.2012

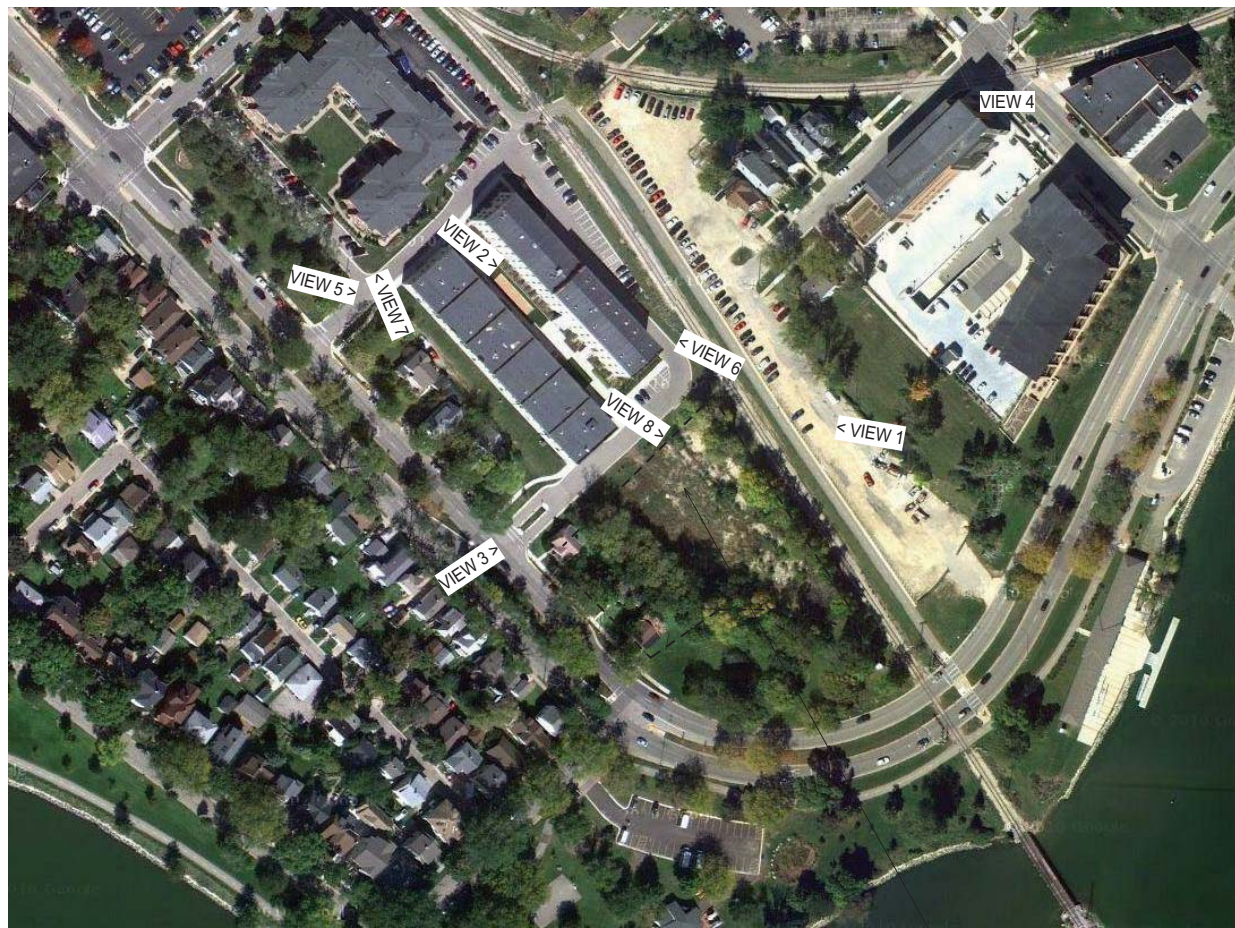
© 2012 VALERIO DEWALT TRAIN ASSOCIATES, INC.

SHEET TITLE
GENERAL INFORMATION



SHEET NUMBER
G1-01

LOCATION MAP



727 LORILLARD

BUILDING INFORMATION

TOTAL SITE ACREAGE:	1.679 ACRES (73,137 SF)
BUILDING FOOTPRINT:	32,189 SF
AREA BY USE:	
RESIDENTIAL AREA (R-1)	133,897 SF
ENCLOSED PARKING (S-2)	45,493 SF
FLOOR AREA RATIO:	2.46
GROSS BUILDING SQUARE FOOTAGE:	179,390 SF
LEVEL 5: RESIDENTIAL	16,226 SF
LEVEL 4: RESIDENTIAL	28,280 SF
LEVEL 3: RESIDENTIAL	31,197 SF
LEVEL 2: RESIDENTIAL	32,001 SF
LEVEL 1: RESIDENTIAL	21,232 SF
PARKING	11,133 SF
LEVEL P2: PARKING	38,321 SF
TOTAL:	179,390 SF

SITE MAP



727 LORILLARD

BUILDING SUMMARY

BUILDING TYPE:	APARTMENT HOUSE
OCCUPANCY:	R-2 OVER S-2
CONSTRUCTION TYPE:	R-2: TYPE 5A S-2: TYPE 1A
SPRINKLERED:	YES
MAXIMUM ALLOWABLE AREA PER FLOOR:	R-2: 45,000 SF S-2: UNLIMITED
MAXIMUM ALLOWABLE HEIGHT:	4 STORIES OF R-2 OVER S-2 7' (WITH NFPA 13 SYSTEM)

DRAWING SCHEDULE

1-GENERAL		
G1-01	GENERAL INFORMATION	03.07.2012
G2-01	RENDERINGS	03.07.2012
G3-01	SITE PHOTOMETRICS	03.07.2012
G3-02	SITE LIGHTING CUT SHEETS	03.07.2012
2-LANDSCAPE		
L-000	SITE SURVEY	03.07.2012
L-100	SITE PREPARATION & EROSION CONTROL	03.07.2012
L-200	SITE GRADING PLAN	03.07.2012
L-300	SITE LAYOUT PLAN	03.07.2012
L-400	SITE UTILITY PLAN	03.07.2012
L-500	DETAILS	03.07.2012
L-600	SITE PLANTING PLAN	03.07.2012
L-700	FIRE ACCESS PLAN	03.07.2012
4-ARCHITECTURAL		
A0-01	SITE PLAN	03.07.2012
A1-00	FLOOR PLAN - LEVEL P2	03.07.2012
A1-01	FLOOR PLAN - LEVEL 1	03.07.2012
A1-02	FLOOR PLAN - LEVEL 2	03.07.2012
A1-03	FLOOR PLAN - LEVEL 3	03.07.2012
A1-04	FLOOR PLAN - LEVEL 4	03.07.2012
A1-05	FLOOR PLAN - LEVEL 5	03.07.2012
A1-06	ROOF PLAN	03.07.2012
A2-01	EXTERIOR ELEVATIONS	03.07.2012
A2-02	EXTERIOR ELEVATIONS	03.07.2012
A2-03	EXTERIOR ELEVATIONS	03.07.2012
A3-11	EASEMENT PLAN AND SECTIONS	03.07.2012
A3-20	ENLARGED ELEVATIONS	03.07.2012
A3-30	SIGNAGE PLANS AND ELEVATIONS	03.07.2012

UNIT MATRIX

LEVEL	# OF BEDROOMS	STUDIOS (S)	1 BEDROOM (1)	2 BEDROOM (2)	TOTAL UNITS	TOTAL BEDROOMS
LEVEL 5	1	9	5	15	19	
LEVEL 4	1	18	7	26	32	
LEVEL 3	2	25	5	32	35	
LEVEL 2	2	22	7	31	36	
LEVEL 1	0	10	2	12	14	
LEVEL P2	-	-	-	-	-	
TOTAL	6	84	26	116	136	

USABLE OPEN SPACE PROVIDED:	22,353 SF
USABLE OPEN SPACE PER UNIT	REQUIRED: 70 SF PROVIDED: 192 SF

PARKING COUNTS:

LEVEL 1 (INTERIOR)	32
LEVEL P2 (INTERIOR)	103
VISITOR (AT GRADE)	6
TOTAL:	141
ADA SPOTS INCLUDED IN TOTAL:	5
STALLS PER UNIT:	1.16
BIKE PARKING COUNTS:	
LEVEL 1 (INTERIOR RESIDENT)	119
AT GRADE (VISITOR)	12
TOTAL:	125

PROJECT TEAM

OWNER

URBAN LAND INTERESTS
 10 EAST DOTY ST.
 SUITE 500
 MADISON, WISCONSIN 53703
 608.251.0706 FAX: 608.251.5572

ARCHITECT

VALERIO DEWALT TRAIN ASSOCIATES, INC.
 500 N. DEARBORN
 SUITE 800
 CHICAGO, ILLINOIS 60654
 312.260.7300 FAX: 312.260.7301

STRUCTURAL ENGINEER

PIERCE ENGINEERS, INC.
 10 W. WISCONSIN STREET
 SUITE 205
 MADISON, WISCONSIN 53703
 608.256.7301 FAX: 608.256.7306

CIVIL ENGINEER & LANDSCAPE ARCHITECT

KEN SAKI DESIGN
 303 S. PATERSON STREET
 SUITE 1
 MADISON, WISCONSIN 53703
 608.251.3600 FAX: 608.251.2330

CONTEXT PHOTOS



VIEW 1



VIEW 2



VIEW 3



VIEW 4



VIEW 5



VIEW 6



VIEW 7



VIEW 8



PROJECT NAME
**727 LORILLARD
 RESIDENTIAL
 APARTMENT**

PROJECT ADDRESS
**727 LORILLARD COURT
 MADISON, WISCONSIN 53703**



ARCHITECT
 VALERIO DEWALT TRAIN ASSOC.
 500 N. DEARBORN, 9TH FLOOR
 CHICAGO, ILLINOIS 60654
 312.260.7300
 www.buildordie.com

PROJECT TEAM ARCHITECT STAMP

VDTA PROJECT NUMBER
 11101.00

CONSULTANT

CONSULTANT PROJECT NUMBER

Issue		
No.	Issued for	Date
1	ISSUED FOR PRICING	02.01.2012
2	PLAN COM/UDC	03.07.2012

© 2012 VALERIO DEWALT TRAIN ASSOCIATES, INC

SHEET TITLE
RENDERINGS



SHEET NUMBER
G2-01



ARCHITECT
 VALERIO DEWALT TRAIN ASSOC.
 500 N. DEARBORN, 8TH FLOOR
 CHICAGO, ILLINOIS 60654
 312.260.7300
 www.valeriodt.com

PROJECT TEAM ARCHITECT STAMP

VOTA PROJECT NUMBER
 11101.00

CONSULTANT

CONSULTANT PROJECT NUMBER

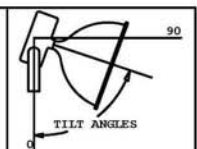
Issue		
No.	Issued for	Date
1	PLAN COM/UDC	03.07.2012

© 2012 VALERIO DEWALT TRAIN ASSOCIATES, INC.

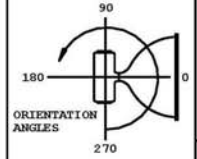
SHEET TITLE
SITE PHOTOMETRICS



- NOTES:
- 1) EXIST SHOWING DETAILS TO BE DETERMINED AT JUDGMENT BY OWNER. SHOWY REPORT EXISTING ON DRAWING. SET TO CENTER OF FIXTURE LENS SURFACE. CALCULATION POINTS DO NOT SHOW THE EFFECTS OF SHADOWING IN THE AREA.
 - 2) VALUES SHOWN ARE PREDICTED HORIZONTAL FOOTCANDLES TAKEN AT GRADE. ACTUAL READINGS MAY VARY DUE TO VARIATIONS IN EQUIPMENT, ELEVATION, OPERATIONAL HOURS OF USE, OBSTRUCTIONS, VARIATIONS IN REFLECTANCES AND/OR ENVIRONMENTAL VARIABLES.
 - 3) LUMINOUS FLUX FACTOR (LFF) IS A PRODUCT OF THE LAMP LUMEN DEPRECIATION (LLD), THE LUMINOUS DUST DEPRECIATION (LDD) AND THE BALLAST FACTOR (BF).
 - 4) LUMINOUS FLUX FACTOR (LFF) IS A PRODUCT OF THE LAMP LUMEN DEPRECIATION (LLD), THE LUMINOUS DUST DEPRECIATION (LDD) AND THE BALLAST FACTOR (BF).
 - 5) L - LUM. THE LLD IS A RESULT OF HEAR LUMEN / INITIAL LUMENS PER LAMP MANUFACTURER AND CAN BE AFFECTED BY ELECTRONIC BALLASTS.
 - 6) L - LUM. THE LDD IS THE APPROXIMATION LUMEN OUTPUT AT 40,000 HOURS OF OPERATION USING THE LAMP THERMAL JUNCTION TEMPERATURE IN THAT FIXTURE AT A TYPICAL AMBIENT OF 25°C.
 - 7) THE BF IS PROVIDED BY THE MANUFACTURER.
 - 8) LUMINOUS FLUX SHOULD NOT BE USED TO SCALE.



Tilt is the angle the fixture is raised or lowered, with zero being aimed straight down. Aiming lines are perpendicular to lens for F-Series, EPX-Family, The-Lite, and Arcs Eclipse fixtures, and they are parallel to the redirecting blades in the Akira family fixtures.



Orientation is the angle the fixture is spun, left or right, around its mount. Fixtures viewed from above (Plan View) with center of rotation being middle of pole or masthead. Orientation angles noted are with respect to this diagram.

NOTICE: THIS DRAWING IS THE EXCLUSIVE PROPERTY OF PHILIPS WIDE-LITE QUALITY LIGHTING AND EXCELLINE. IT IS ACCEPTED AS AN AGREEMENT THAT THE DRAWING WILL BE TREATED AS CONFIDENTIAL. THIS DRAWING IS NOT TO BE REPRODUCED, COPIED, OR TRANSMITTED IN ANY FORM OR BY ANY MEANS, ELECTRONIC OR MECHANICAL, INCLUDING PHOTOCOPYING, RECORDING, OR BY ANY INFORMATION STORAGE AND RETRIEVAL SYSTEM, WITHOUT THE EXPRESS WRITTEN PERMISSION OF PHILIPS WIDE-LITE QUALITY LIGHTING AND EXCELLINE. ANY SUCH VIOLATION SHALL BE SUBJECT TO LEGAL ACTION AND DAMAGES. THIS NOTICE IS NOT TO BE RETURNED UNLESS EXPRESSLY AUTHORIZED.

NOTICE: THE INTENT OF THIS LIGHTING LAYOUT IS TO SUGGEST THE BEST POSSIBLE UTILIZATION OF PHILIPS WIDE-LITE QUALITY LIGHTING AND EXCELLINE. IT IS NOT TO BE USED FOR ANY OTHER PURPOSES WITHOUT THE EXPRESS WRITTEN PERMISSION OF PHILIPS WIDE-LITE QUALITY LIGHTING AND EXCELLINE. ANY SUCH VIOLATION SHALL BE SUBJECT TO LEGAL ACTION AND DAMAGES. THIS NOTICE IS NOT TO BE RETURNED UNLESS EXPRESSLY AUTHORIZED.

Symbol	Qty	Label	Arrangement	Lumens	Art. Watts	LLD	LDD	BF	LLF	Description
□	11	AS1	SINGLE	1809	129	1.000	1.000	1.000	0.750	STHAP-100-RS
□	11	AS1	SINGLE	10726	185	1.000	1.000	1.000	0.750	AWGHP-100-F
□	27	PS1	SINGLE	3561	180	1.000	1.000	1.000	0.750	PEXSP-100-V
□	2	D2TW	SINGLE	4042	80	0.700	0.950	1.000	0.685	DFSPPT-70-WBA-HIGH

Label	CalcType	Units	Avg	Max	Min	AvgMin	MaxMin
Courtyard Lights	Illuminance	Fc	12.38	151	0.2	41.90	292.50
Entrance Road	Illuminance	Fc	4.83	27.7	0.2	24.15	189.50
Loading Area	Illuminance	Fc	9.80	80.4	0.5	19.80	120.80
Stairs	Illuminance	Fc	16.30	119	0.1	103.60	1194
Walkway_1	Illuminance	Fc	8.53	54.7	0.2	42.65	273.50
Walkway_2	Illuminance	Fc	6.63	57.0	0.1	68.30	570.00

PHILIPS
WideLite
 Quality Lighting
 EXCELLINE

L BRADDOCK
 DESIGNED BY: 2/28/2012
 DATE

CHECKED BY: AS NOTED
 SCALE

EMPT: 1 OF 1
 SHEETS TO: D

56021 REV-A.AGI
 FILE / DRAWING NO.

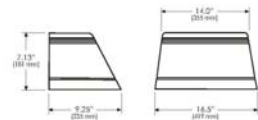
727 LORILLARD, MADISON, WISCONSIN
 TRACY HASSELBROG / PHILIPS
 WIDE-LITE / QUALITY LIGHTING / EXCELLINE
 ARCHITECTURAL WALL SERIES / AWSP-100-V
 STX SERIES / STXAP-100-RS
 PEX SERIES / PEXSP-100-V
 DECORFLOOD SERIES / DFSPPT-70-WBA

AWS1 Series

Wedge Shape Wall Sconce - 50-150W HID / 242 max CF

Type:	job:	Approvals:
Catalog Number:		
Series/Source/Wattage:	Distribution:	Voltage:
Options:	Finish:	Date:
		Page 1 of 2

Overall Dimensions (for Reference Only)



Weight: 16.3 lbs. (7.4kg)

Specifications

Housing: Anodized aluminum housing. Constructed to IP54.

Lens and Gazing: Heat and impact resistant tempered glass lens. Silicone rubber gazing.

Optical System: Available in three beamlight distribution patterns: SPMA, Full Cutoff, classification: Non-Flare 20° or wider (90° distribution) available for angle lamp units in all sources. Two beam CF units are only available with 20° SPMA.

EBB: Available in selectability capacity (standard/aluminum segmented reflector). Optionally kitted, HID unit requires maximum size 52 W lamp. Compact fluorescent unit requires GX24q-K49000.

Mounting: The fixture shall be surface wall mount type. Mounting is universal mounting bracket with lipside level for accurate installation to a flat, round or octagonal junction box. Lipside level hardware.

Ballast: HID ballast is standard for HID sources. Compact CF ballast may be specified in selected HID sources and wattages. CF ballast shall be electronic, high frequency, high power factor.

Emergency Battery Backup Options: All emergency ballasts feature an indicator light visible through the lens and is best located accessible through the door opening. In the event of a power interruption, emergency ballasts will power CF lamps at reduced light levels for a minimum of 90 minutes.

Remove EBB options include 2.5 (2.29W), 12 wire, single disconnect, available for wiring through conduit (by other) to either the EBB or EBB-C.

CAUTION: Maximum battery pack input power limits with the EBB-C. 120 watts (243 units) when nesting element is on battery less than 90% of 4.0V or below. This is in addition to the maximum power for emergency lamp(s) at ballast.

Warning: Mechanical, finish and electrical shall be covered by a limited 1-year warranty.

Terms and Conditions: The current Philips Wedge (the Warranty) may be found at www.philips.com. Payment of the price of the fixture is deemed to be acceptance of the above conditions of sale. Payment terms and conditions of sale (payment terms).

EBB (Integral): 12V (20W)

EBB-C (Integral): 20V (4W)

EBB-C (Removable): 12V (20W)

EBB-C (Removable): 18V (2W)

Finish: Powder coated, electrochromic coated, anodized, or powder coat. All finishes are standard. Contact factory for non-standard finishes. All finishes are standard. Contact factory for non-standard finishes. All finishes are standard. Contact factory for non-standard finishes.

Philips Wedge reserves the right to change specifications and dimensions without notice. Lamp and electrical specifications available upon request. Philips Wedge reserves the right to change specifications and dimensions without notice. Lamp and electrical specifications available upon request. Philips Wedge reserves the right to change specifications and dimensions without notice. Lamp and electrical specifications available upon request.



AWS1 Series

Wedge Shape Wall Sconce - 50-150W HID / 242 max CF

Type:	job:	Page 2 of 2
Series/Source/Wattage:	Distribution:	Voltage:
Options:	Finish:	

<input type="checkbox"/> AWS1P-50	<input type="checkbox"/> F	<input type="checkbox"/> 120	<input type="checkbox"/> CWA1	<input type="checkbox"/> TBK
<input type="checkbox"/> AWS1P-70	<input type="checkbox"/> W	<input type="checkbox"/> 208	<input type="checkbox"/> PCB1	<input type="checkbox"/> TDB
<input type="checkbox"/> AWS1P-100	<input type="checkbox"/> 2D	<input type="checkbox"/> 240	<input type="checkbox"/> EBB1A	<input type="checkbox"/> TGR
<input type="checkbox"/> AWS1P-150	<input type="checkbox"/> 2D	<input type="checkbox"/> 277	<input type="checkbox"/> EBB-C1A	<input type="checkbox"/> TGA
	<input type="checkbox"/> 2D	<input type="checkbox"/> 480	<input type="checkbox"/> EBB1B	<input type="checkbox"/> TSB
	<input type="checkbox"/> 2D	<input type="checkbox"/> 480	<input type="checkbox"/> EBB-C1B	<input type="checkbox"/> TSN
	<input type="checkbox"/> 2D	<input type="checkbox"/> 277	<input type="checkbox"/> EBB1C	<input type="checkbox"/> TGN
	<input type="checkbox"/> 2D	<input type="checkbox"/> 277	<input type="checkbox"/> EBB-C1C	<input type="checkbox"/> TGT
	<input type="checkbox"/> 2D	<input type="checkbox"/> 277	<input type="checkbox"/> EBB1D	<input type="checkbox"/> THT
	<input type="checkbox"/> 2D	<input type="checkbox"/> 277	<input type="checkbox"/> EBB-C1D	<input type="checkbox"/> THT
	<input type="checkbox"/> 2D	<input type="checkbox"/> 277	<input type="checkbox"/> EBB1E	<input type="checkbox"/> THT
	<input type="checkbox"/> 2D	<input type="checkbox"/> 277	<input type="checkbox"/> EBB-C1E	<input type="checkbox"/> THT
	<input type="checkbox"/> 2D	<input type="checkbox"/> 277	<input type="checkbox"/> EBB1F	<input type="checkbox"/> THT
	<input type="checkbox"/> 2D	<input type="checkbox"/> 277	<input type="checkbox"/> EBB-C1F	<input type="checkbox"/> THT
	<input type="checkbox"/> 2D	<input type="checkbox"/> 277	<input type="checkbox"/> EBB1G	<input type="checkbox"/> THT
	<input type="checkbox"/> 2D	<input type="checkbox"/> 277	<input type="checkbox"/> EBB-C1G	<input type="checkbox"/> THT
	<input type="checkbox"/> 2D	<input type="checkbox"/> 277	<input type="checkbox"/> EBB1H	<input type="checkbox"/> THT
	<input type="checkbox"/> 2D	<input type="checkbox"/> 277	<input type="checkbox"/> EBB-C1H	<input type="checkbox"/> THT
	<input type="checkbox"/> 2D	<input type="checkbox"/> 277	<input type="checkbox"/> EBB1I	<input type="checkbox"/> THT
	<input type="checkbox"/> 2D	<input type="checkbox"/> 277	<input type="checkbox"/> EBB-C1I	<input type="checkbox"/> THT
	<input type="checkbox"/> 2D	<input type="checkbox"/> 277	<input type="checkbox"/> EBB1J	<input type="checkbox"/> THT
	<input type="checkbox"/> 2D	<input type="checkbox"/> 277	<input type="checkbox"/> EBB-C1J	<input type="checkbox"/> THT
	<input type="checkbox"/> 2D	<input type="checkbox"/> 277	<input type="checkbox"/> EBB1K	<input type="checkbox"/> THT
	<input type="checkbox"/> 2D	<input type="checkbox"/> 277	<input type="checkbox"/> EBB-C1K	<input type="checkbox"/> THT
	<input type="checkbox"/> 2D	<input type="checkbox"/> 277	<input type="checkbox"/> EBB1L	<input type="checkbox"/> THT
	<input type="checkbox"/> 2D	<input type="checkbox"/> 277	<input type="checkbox"/> EBB-C1L	<input type="checkbox"/> THT
	<input type="checkbox"/> 2D	<input type="checkbox"/> 277	<input type="checkbox"/> EBB1M	<input type="checkbox"/> THT
	<input type="checkbox"/> 2D	<input type="checkbox"/> 277	<input type="checkbox"/> EBB-C1M	<input type="checkbox"/> THT
	<input type="checkbox"/> 2D	<input type="checkbox"/> 277	<input type="checkbox"/> EBB1N	<input type="checkbox"/> THT
	<input type="checkbox"/> 2D	<input type="checkbox"/> 277	<input type="checkbox"/> EBB-C1N	<input type="checkbox"/> THT
	<input type="checkbox"/> 2D	<input type="checkbox"/> 277	<input type="checkbox"/> EBB1O	<input type="checkbox"/> THT
	<input type="checkbox"/> 2D	<input type="checkbox"/> 277	<input type="checkbox"/> EBB-C1O	<input type="checkbox"/> THT
	<input type="checkbox"/> 2D	<input type="checkbox"/> 277	<input type="checkbox"/> EBB1P	<input type="checkbox"/> THT
	<input type="checkbox"/> 2D	<input type="checkbox"/> 277	<input type="checkbox"/> EBB-C1P	<input type="checkbox"/> THT
	<input type="checkbox"/> 2D	<input type="checkbox"/> 277	<input type="checkbox"/> EBB1Q	<input type="checkbox"/> THT
	<input type="checkbox"/> 2D	<input type="checkbox"/> 277	<input type="checkbox"/> EBB-C1Q	<input type="checkbox"/> THT
	<input type="checkbox"/> 2D	<input type="checkbox"/> 277	<input type="checkbox"/> EBB1R	<input type="checkbox"/> THT
	<input type="checkbox"/> 2D	<input type="checkbox"/> 277	<input type="checkbox"/> EBB-C1R	<input type="checkbox"/> THT
	<input type="checkbox"/> 2D	<input type="checkbox"/> 277	<input type="checkbox"/> EBB1S	<input type="checkbox"/> THT
	<input type="checkbox"/> 2D	<input type="checkbox"/> 277	<input type="checkbox"/> EBB-C1S	<input type="checkbox"/> THT
	<input type="checkbox"/> 2D	<input type="checkbox"/> 277	<input type="checkbox"/> EBB1T	<input type="checkbox"/> THT
	<input type="checkbox"/> 2D	<input type="checkbox"/> 277	<input type="checkbox"/> EBB-C1T	<input type="checkbox"/> THT
	<input type="checkbox"/> 2D	<input type="checkbox"/> 277	<input type="checkbox"/> EBB1U	<input type="checkbox"/> THT
	<input type="checkbox"/> 2D	<input type="checkbox"/> 277	<input type="checkbox"/> EBB-C1U	<input type="checkbox"/> THT
	<input type="checkbox"/> 2D	<input type="checkbox"/> 277	<input type="checkbox"/> EBB1V	<input type="checkbox"/> THT
	<input type="checkbox"/> 2D	<input type="checkbox"/> 277	<input type="checkbox"/> EBB-C1V	<input type="checkbox"/> THT
	<input type="checkbox"/> 2D	<input type="checkbox"/> 277	<input type="checkbox"/> EBB1W	<input type="checkbox"/> THT
	<input type="checkbox"/> 2D	<input type="checkbox"/> 277	<input type="checkbox"/> EBB-C1W	<input type="checkbox"/> THT
	<input type="checkbox"/> 2D	<input type="checkbox"/> 277	<input type="checkbox"/> EBB1X	<input type="checkbox"/> THT
	<input type="checkbox"/> 2D	<input type="checkbox"/> 277	<input type="checkbox"/> EBB-C1X	<input type="checkbox"/> THT
	<input type="checkbox"/> 2D	<input type="checkbox"/> 277	<input type="checkbox"/> EBB1Y	<input type="checkbox"/> THT
	<input type="checkbox"/> 2D	<input type="checkbox"/> 277	<input type="checkbox"/> EBB-C1Y	<input type="checkbox"/> THT
	<input type="checkbox"/> 2D	<input type="checkbox"/> 277	<input type="checkbox"/> EBB1Z	<input type="checkbox"/> THT
	<input type="checkbox"/> 2D	<input type="checkbox"/> 277	<input type="checkbox"/> EBB-C1Z	<input type="checkbox"/> THT

EBB Availability

CF wattage	250 lumens	120 lumens	100 lumens	100 lumens
24	✓	✓	✓	✓
32	✓	✓	✓	✓
42	✓	✓	✓	✓
24-42	✓	✓	✓	✓

* 120 lumens package for 24 and 32 with EBB-C in emergency mode. Wattage may differ depending on the production of codes in other areas. Contact factory for details.



Philips Wedge reserves the right to change specifications and dimensions without notice. Lamp and electrical specifications available upon request. Philips Wedge reserves the right to change specifications and dimensions without notice. Lamp and electrical specifications available upon request. Philips Wedge reserves the right to change specifications and dimensions without notice. Lamp and electrical specifications available upon request.



Quality Lighting **STX4**



Low Level Lighting
Landscape Accent
Walkways
Parks

HOUSING: Semi-recessed, water-tight, die-cast, copper-free aluminum with glass lens. Hinges allow for easy re-lamping.

REFLECTOR: Capless, black inside stainless steel, tamper resistant.

GASKET: Single piece molded silicone.

SOCKET: HID models, porcelain socket in medium base, 40V pilot rated. Compact fluorescent model, 32 watt socket in GX24q-K. CF watt socket in GX24q-K. 30 lamp in 30 lamp base.

REFLECTOR: Special aluminum segmented reflector assembly.

LENS FRAME: Frosted tempered glass lens with silicone gasketing.

MOUNTING ASSEMBLY: Hardware and template for concrete pour is supplied. Mounting kits for masonry (BMA1) and new (BMA2) or existing steel walls (BMA3) may be ordered as accessories.

ELECTRICAL ASSEMBLY: Electrical components are mounted on a removable galvanized steel ballast tray. Factory wired with quick disconnect for easy replacement. Ballasts have power factor greater than 90%. Metal ballast ballasts are capable of starting at 20° F or 20° C, 40° F or 40° C, 40° F or 40° C. All components are UL and CSA listed as UL recognized and 100% factory tested.

BALLAST: Ballast is factory wired and tested. IPE 120/208/240/277 v.

WIRING COMMITMENT: One 0.5" NPT conduit top on the back, two 0.75" NPT taps on the bottom and one 0.75" NPT tap on each side for easy rough wiring.

FINISH: Smooth, thermoplastic polyester powdercoat, laboratory tested for superior weatherability and fade resistance in accordance with ASTM B-117-84 and ANSI/ASTM G33-77 specifications. Available in Black, Black, White, White, Dark Bronze, Silver or Custom Color (RAL).

WARRANTY: Mechanical, finish and electrical shall be covered by a limited 1-year warranty. See www.philips.com for details.

CERTIFICATION: UL Listed to US and Canadian safety standards for wet locations. Future manufacturers shall employ a quality program that is certified to ISO 9001:2008 standards.

Quality Lighting is a Philips group brand



Quality Lighting **STX4**

PROJECT: Quality Lighting
1611 Clark St, Suite 100
San Marcos, Texas 78666
Tel: Fax: Phone: (512) 545-1326
Fax: (512) 771-0022
www.qualitylighting.com
e-mail: quality@qualitylighting.com

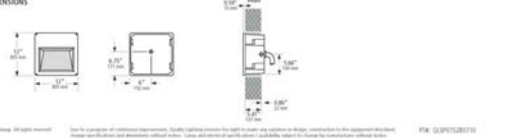
ORDERING EXAMPLE: STX4C-29-45-120-F-08

ORDERING INFORMATION

SERIES/SOURCE/WATTAGE	DISTRIBUTION	VOLTAGE	OPTIONS	FINISH	ACCESSORIES
Polar Star Metal Halide STX4P-50 STX4P-70 STX4P-100 STX4P-150	Y ¹ W 2D 2D	120 208 240 277	None None None None	None None None None	None None None None
Compact Fluorescent STX4C-29 STX4C-39	Y ¹ W	120 208	None None	None None	None None
High Pressure Sodium STX4S-50 STX4S-70 STX4S-100 STX4S-150	Y ¹ W	120 208 240 277	None None None None	None None None None	None None None None

ACCESSORIES

<input type="checkbox"/> BMA1	<input type="checkbox"/> BMA2	<input type="checkbox"/> BMA3	<input type="checkbox"/> BMA4
<input type="checkbox"/> BMA5	<input type="checkbox"/> BMA6	<input type="checkbox"/> BMA7	<input type="checkbox"/> BMA8
<input type="checkbox"/> BMA9	<input type="checkbox"/> BMA10	<input type="checkbox"/> BMA11	<input type="checkbox"/> BMA12



© 2012 Philips Group. All rights reserved. This is a registered trademark of Philips Lighting. Philips Lighting reserves the right to change specifications and dimensions without notice. Lamp and electrical specifications available upon request. Philips Lighting reserves the right to change specifications and dimensions without notice. Lamp and electrical specifications available upon request.

Quality Lighting **PBSX8**



Low Level Lighting
Landscape Accent
Walkways
Parks

HOUSING: 3000-64 4' formed aluminum alloy. Head is added to the ballast tube with a single stainless steel shielded cover for easy removal for re-lamping. It is 300-404 4' formed aluminum alloy with a steel frame enclosure. A weather-resistant secondary lock is the ballast on wire and holds for longer life. All non-ferrous surfaces prevent corrosion and ensure longer life.

FINISH: Thermoplastic polyester powdercoat (electrochromic) applied after a three-stage conversion coating process and bonded by heat fusion thermosetting. Laboratory tested for superior weatherability and fade resistance in accordance with ASTM B-117-84 and ANSI/ASTM G33-77 specifications. Contact the factory for larger project details. Includes a custom color.

OPTICAL ASSEMBLY: Type V Special thermoplastic aluminum internal cone. Optically designed highly polished 6.24K aluminum internal cone. Specially optically designed white powder-coated aluminum internal cone assembly. 0° beam, 0.1670" throw. ULX standard. One projection in 10°.

LAMPING: Polar Star Metal Halide (with) pressure sodium Medium base (D 7, 20W compact fluorescent (G23-20)).

ELECTRICAL ASSEMBLY: High pressure sodium ballast is mounted on aluminum plate, which is mounted inside the cone. Quick disconnect for easy replacement. Laboratory tested for superior weatherability and fade resistance in accordance with ASTM B-117-84 and ANSI/ASTM G33-77 specifications. Contact the factory for larger project details. Includes a custom color. 20W fluorescent sockets is G23-20.

BALLAST: All HID ballasts are color coded and engineered with power factors over 90% (P.F.). Ballast provides 40-50 lamp power regulation with 40-100 surge voltage regulation. Ballast has factory pre-wired ballast tube. Ballast tube ballast tube are capable of starting at 20° F or 20° C and high pressure sodium at 40° F or 40° C. NOTE: All ballasts are UL and CSA listed as UL recognized. Applicable. Fluorescent ballast is electronic. Ballast is capable of starting 100° F or 40° C. Ballast is factory tested and listed.

INSTALLATION & MOUNTING: Internal cast aluminum base plate is secured to anchor flange by two (2) 3/8" x 1.5" galvanized steel bolts and nuts on a 1/2" wall thickness. Use factory supplied hardware. A track hole action after the base plate is drilled on the lower ballast casting. It is used to fasten the ballast to the ballast structure. Ballast structure can be located on one anchor nut. One set screw is used to secure the ballast to the base plate.

WARRANTY: Mechanical, finish and electrical shall be covered by a limited 1-year warranty. See www.philips.com for details.

CERTIFICATION: UL Listed to US and Canadian safety standards for wet locations.

Quality Lighting is a Philips group brand



Quality Lighting **PBSX8**

PROJECT: Quality Lighting
1611 Clark St, Suite 100
San Marcos, Texas 78666
Tel: Fax: Phone: (512) 545-1326
Fax: (512) 771-0022
www.qualitylighting.com
e-mail: quality@qualitylighting.com

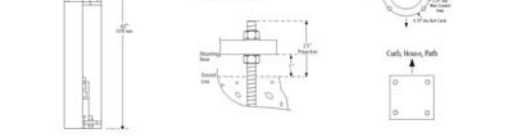
ORDERING EXAMPLE: PBSX8-50-5-120-BLK

ORDERING INFORMATION

SERIES/SOURCE/WATTAGE	DISTRIBUTION	VOLTAGE	FINISH
Polar Star Metal Halide PBSX8P-50 PBSX8P-70 PBSX8P-100 PBSX8P-150	Y ¹ W 2D 2D	120 208 240 277	None None None None
Compact Fluorescent PBSX8C-29 PBSX8C-39	Y ¹ W	120 208	None None
High Pressure Sodium PBSX8S-50 PBSX8S-70 PBSX8S-100 PBSX8S-150	Y ¹ W	120 208 240 277	None None None None

ACCESSORIES

<input type="checkbox"/> BMA1	<input type="checkbox"/> BMA2	<input type="checkbox"/> BMA3	<input type="checkbox"/> BMA4
<input type="checkbox"/> BMA5	<input type="checkbox"/> BMA6	<input type="checkbox"/> BMA7	<input type="checkbox"/> BMA8
<input type="checkbox"/> BMA9	<input type="checkbox"/> BMA10	<input type="checkbox"/> BMA11	<input type="checkbox"/> BMA12



© 2012 Philips Group. All rights reserved. This is a registered trademark of Philips Lighting. Philips Lighting reserves the right to change specifications and dimensions without notice. Lamp and electrical specifications available upon request. Philips Lighting reserves the right to change specifications and dimensions without notice. Lamp and electrical specifications available upon request.

PROJECT NAME
727 LORILLARD
RESIDENTIAL
APARTMENT

PROJECT ADDRESS
727 LORILLARD COURT
MADISON, WISCONSIN 53703



ARCHITECT

VALERIO DEWALT TRAIN ASSOC.
500 N. DEARBORN, 8TH FLOOR
CHICAGO, ILLINOIS 60654
312.260.7300
www.valeriodt.com

PROJECT TEAM **ARCHITECT STAMP**

VOTA PROJECT NUMBER
11101.00

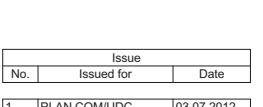
CONSULTANT

CONSULTANT PROJECT NUMBER

No.	Issue	Date
1	PLAN COM/UDC	03.07.2012

© 2012 VALERIO DEWALT TRAIN ASSOCIATES, INC

SHEET TITLE
SITE LIGHTING CUT SHEETS



SHEET NUMBER
G3-02



ARCHITECT
 VALERIO DEWALT TRAIN ASSOC.
 500 N. DEARBORN, 5TH FLOOR
 CHICAGO, ILLINOIS 60654
 312.260.7300
 www.buildordie.com
 PROJECT TEAM ARCHITECT STAMP

VOTA PROJECT NUMBER
 11101.00

CONSULTANT

 KEN SAKI
 DESIGN INC.
 LANDSCAPE
 ARCHITECTS
 403 S. PATTERSON
 MADISON, WI 53703
 Phone: 608.831.2000
 www.ksd-llc.com
 CONSULTANT PROJECT NUMBER
 2011-039

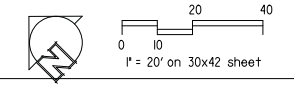
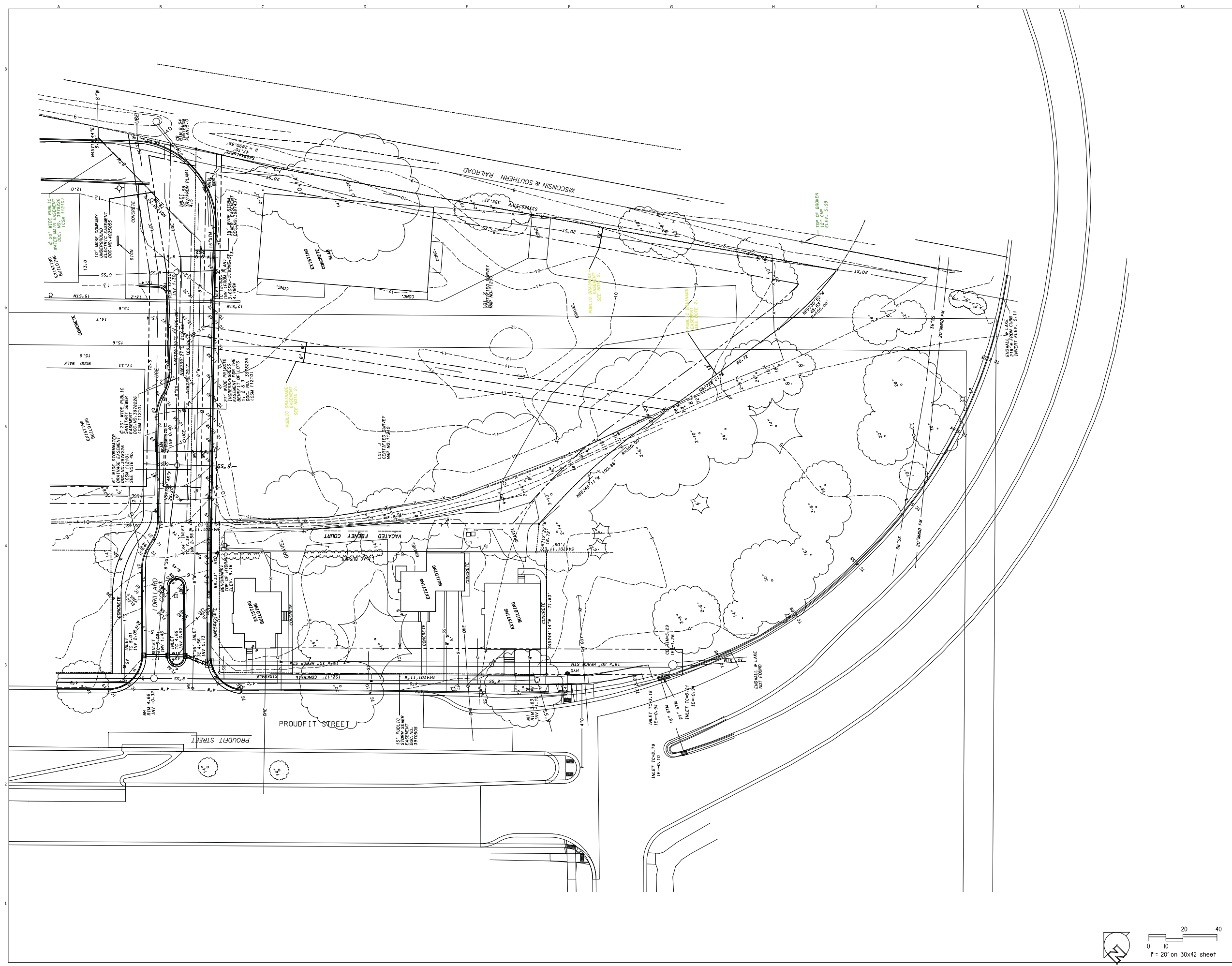
Issue		
No.	Issued for	Date
1	ISSUED FOR PRICING	02.01.2012
2	PLAN COM/UDC	03.07.2012

© 2012 VALERIO DEWALT TRAIN ASSOCIATES, INC.

SHEET TITLE
**Sheet Name
 Site Survey**



SHEET NUMBER
L-000





ARCHITECT
 VALERIO DEWALT TRAIN ASSOC.
 500 W. DEARBORN, 5TH FLOOR
 CHICAGO, ILLINOIS 60654
 312.260.7300
 www.buildordie.com

PROJECT TEAM ARCHITECT STAMP
 VOTA PROJECT NUMBER
 11101.00

CONSULTANT

 CONSULTANT PROJECT NUMBER
 2011-039

Issue		
No.	Issued for	Date
1	ISSUED FOR PRICING	02.01.2012
2	PLAN COM/UDC	03.07.2012

© 2012 VALERIO DEWALT TRAIN ASSOCIATES, INC.

SHEET TITLE
Site Prep. & Erosion
Control Plan

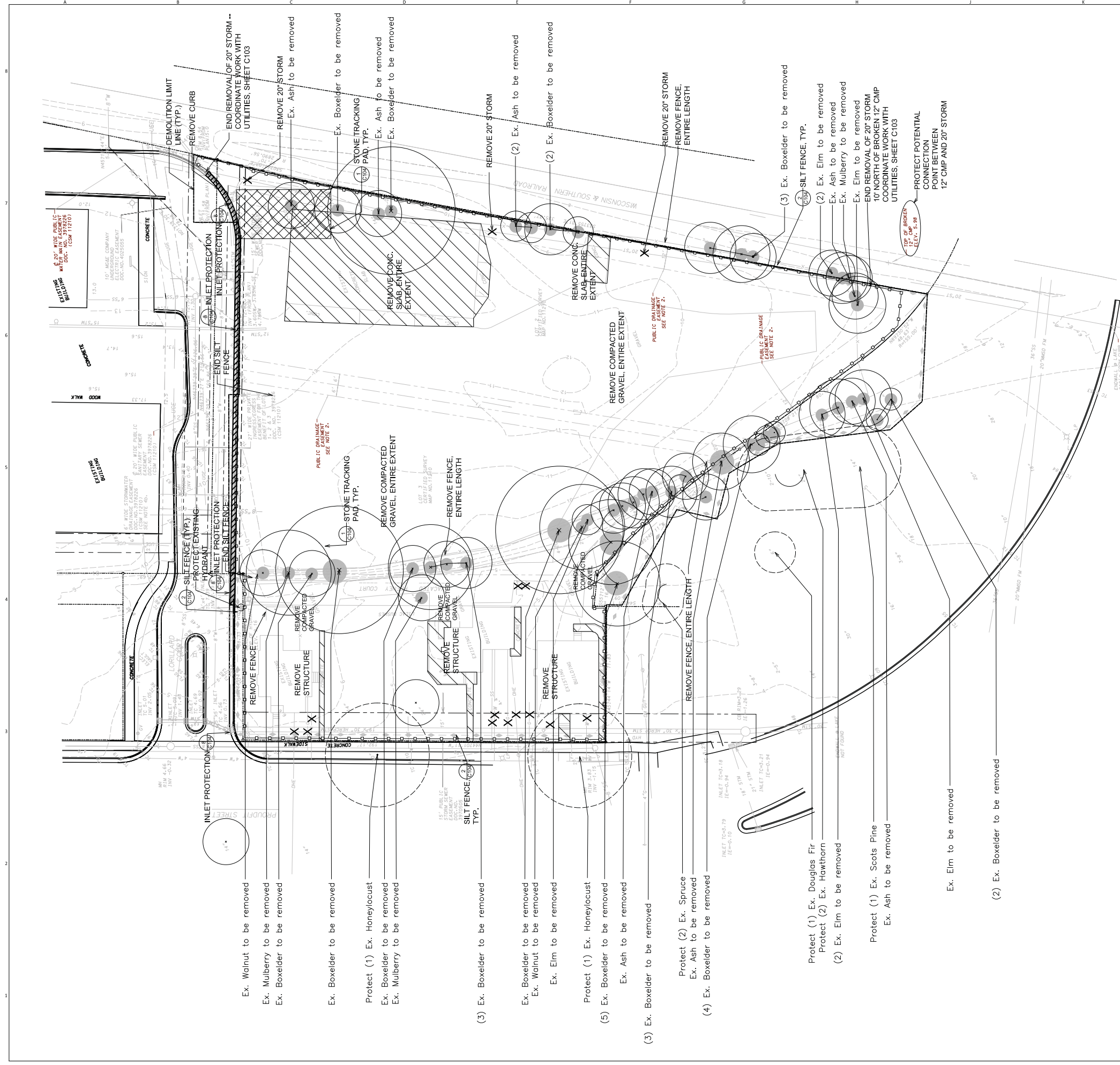
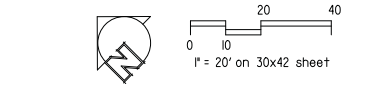


SHEET NUMBER
L-100

- NOTES**
- Existing site topographic, benchmark, and utility information was provided by D Onofrio Kotke & Associates. The survey is dated 7-9-08. It is the contractor's responsibility to field verify survey information prior to start of construction and report any discrepancies.
 - See Sheet C-500 for Erosion Control Details.
 - Site will be excavated to construct underground parking structure.
 - Provide silt filter on all pumping operation for lower level foundations and associated grading.
 - Provide stabilized construction entrance at all access points to the site from surrounding roadways.
 - Remove all existing site utilities per plan and survey drawing. Plug or cap all laterals per City of Madison Standards.
 - Demolition work is to be performed as indicated in a reuse and recycling plan, to be formulated by General Contractor.
 - Install silt fence where shown. Install inlet protection measures on all public and private inlets adjacent to construction boundary.
 - Provide Wisconsin Department of Transportation (WIS DOT) Type C or D inlet protection for existing curb inlets per plan.
 - Remove all areas of gravel and/or compacted gravel, concrete slag piles, or piles of refuse material and dispose of off-site.
 - Gravel shall be excavated to a minimum depth of 12 inches in any area to receive plantings or seeding. Excavated gravel shall be disposed of off-site.
 - Remove all existing private sidewalks, concrete stairs, concrete pads, and gravel areas associated with the three single family residential units to be removed along Prouditt Street.
 - Protect all existing pavements, curbs, utilities, and other improvements, except where noted, during demolition and construction.
 - Any unforeseen demolition or construction activities outside of the demolition line requires coordination with City of Madison and/or Wisconsin & Southern Railroad.
 - Contractor shall make every attempt to protect existing concrete pad for mailbox. Mailbox may be temporarily or permanently relocated - coordinate with Owner and US Postal Service.
 - Elevator lift currently stored at the northwest corner of the site shall be salvaged by contractor prior to site clearing and demolition, stored in a secure location during construction, and placed per detail after concrete pad has fully cured.
 - Cinder material encountered during excavation shall be removed, replaced, and disposed of in accordance with the 07/23/04 "Excavated Soil Handling Criteria" letter by Gannett Fleming Inc.

LEGEND

- REMOVE PAVEMENT
- REMOVE CURB
- REMOVE / PLUG / CAP UTILITY
- REMOVE EXISTING TREE
- TREE PROTECTION MEASURES: 2/C100
- PROTECT EXISTING FIRE HYDRANT (1)
- INLET PROTECTION (4)
- STONE TRACKING PAD (2)
- SILT FENCE
- CONSTRUCTION SECURITY FENCE WITH GATES - GENERAL CONTRACTOR TO ERECT, MAINTAIN AND REMOVE
- DEMOLITION LIMIT LINE



- Ex. Walnut to be removed
- Ex. Mulberry to be removed
- Ex. Boxelder to be removed
- Ex. Boxelder to be removed
- Protect (1) Ex. Honeylocust
- Ex. Boxelder to be removed
- Ex. Mulberry to be removed
- Ex. Boxelder to be removed
- Protect (1) Ex. Honeylocust
- Ex. Ash to be removed
- Ex. Elm to be removed
- Protect (1) Ex. Honeylocust
- Ex. Ash to be removed
- Protect (2) Ex. Spruce
- Ex. Ash to be removed
- (4) Ex. Boxelder to be removed
- (3) Ex. Boxelder to be removed
- Ex. Boxelder to be removed
- Ex. Walnut to be removed
- Ex. Elm to be removed
- Protect (1) Ex. Honeylocust
- Ex. Ash to be removed
- Ex. Elm to be removed
- Protect (1) Ex. Scots Pine
- Ex. Ash to be removed
- Ex. Elm to be removed
- (2) Ex. Boxelder to be removed



ARCHITECT
 VALERIO DEWALT TRAIN ASSOC.
 500 N. DEARBORN, 5TH FLOOR
 CHICAGO, ILLINOIS 60654
 312.260.7300
 www.buildordie.com

PROJECT TEAM ARCHITECT STAMP

VOTA PROJECT NUMBER
 11101.00

CONSULTANT

 KEN SAKI
 DESIGN INC.
 LANDSCAPE
 ARCHITECTS
 AND A PATTERSON
 ASSOCIATE, WI 53703
 Phone: 608.851.2000
 www.ksd-ia.com

CONSULTANT PROJECT NUMBER
 2011-039

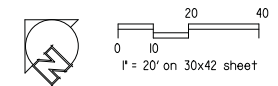
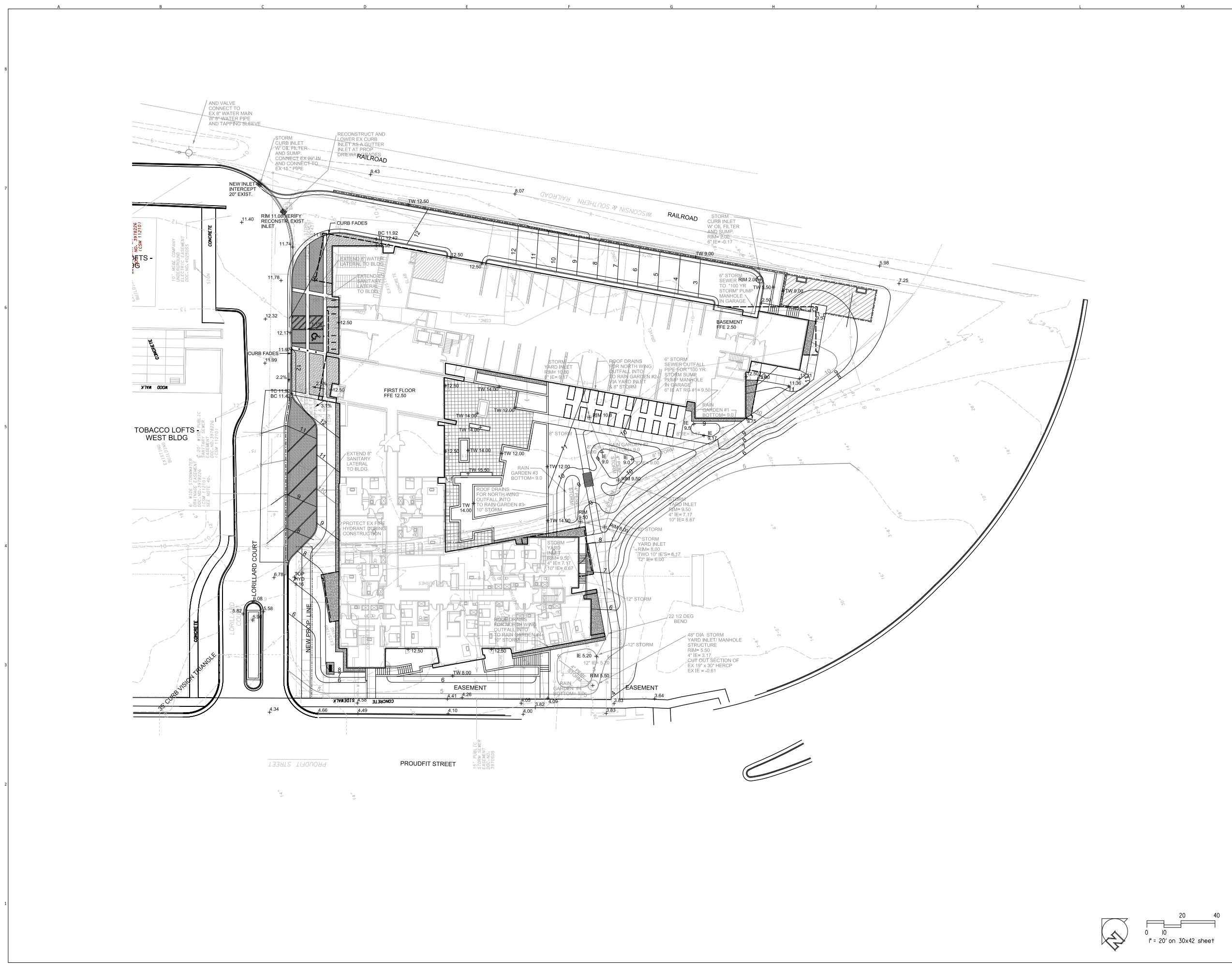
Issue		
No.	Issued for	Date
1	ISSUED FOR PRICING	02.01.2012
2	PLAN COM/UDC	03.07.2012

© 2012 VALERIO DEWALT TRAIN ASSOCIATES, INC.

SHEET TITLE
Site Grading Plan



SHEET NUMBER
L-200





ARCHITECT
 VALERIO DEWALT TRAIN ASSOC.
 500 N. DEARBORN, 5TH FLOOR
 CHICAGO, ILLINOIS 60654
 312.260.7300
 www.buildordie.com
 PROJECT TEAM ARCHITECT STAMP

VOTA PROJECT NUMBER
 11101.00

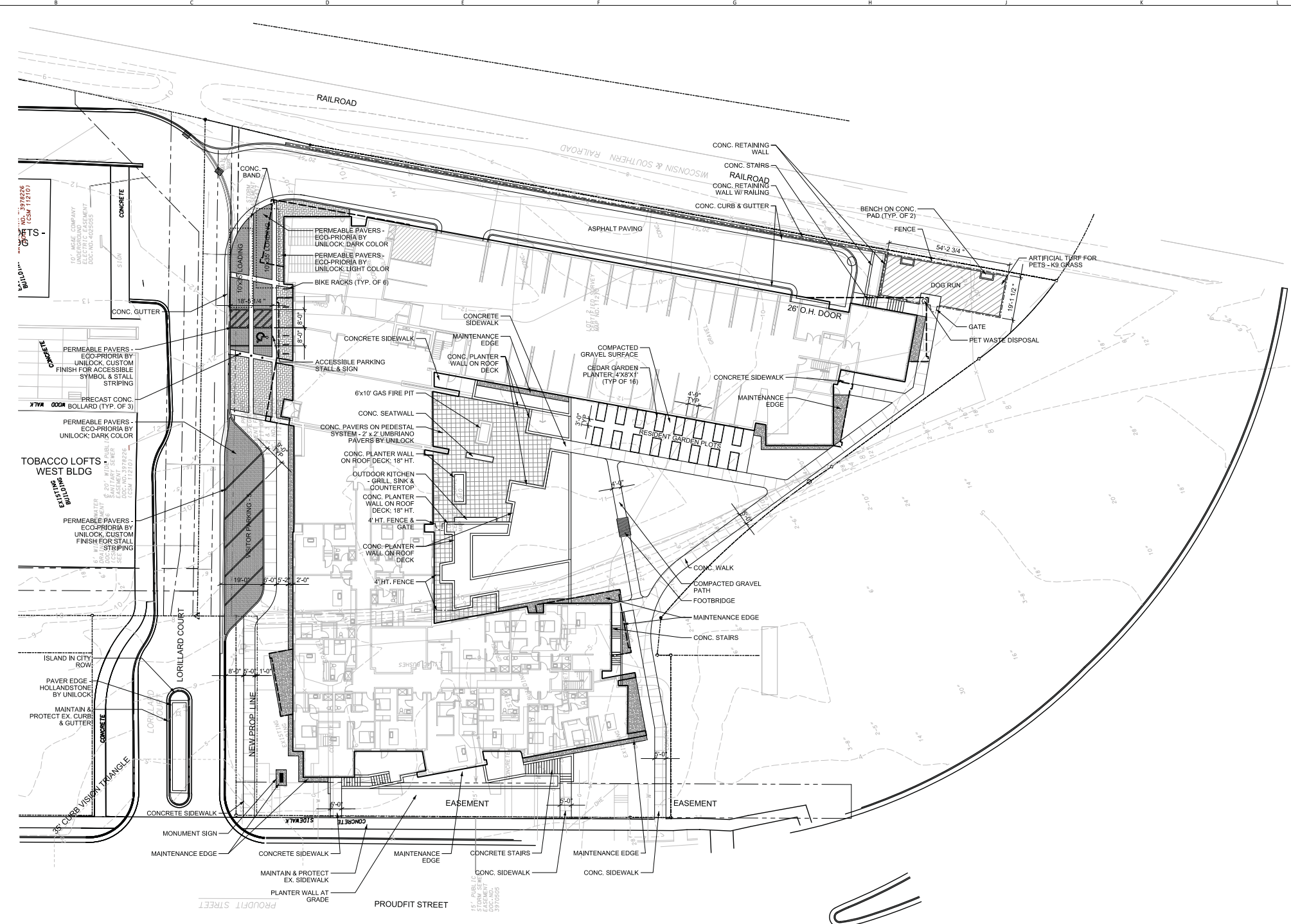
CONSULTANT

 KEN SAKI
 DESIGN INC.
 LANDSCAPE ARCHITECTS
 400 S. PATTERSON
 MADISON, WI 53703
 Phone: 608.851.1000
 www.ksd-ia.com
 CONSULTANT PROJECT NUMBER
 2011-039

Issue		
No.	Issued for	Date
1	ISSUED FOR PRICING	02.01.2012
2	PLAN COM/UDC	03.07.2012

© 2012 VALERIO DEWALT TRAIN ASSOCIATES, INC.

SHEET TITLE
Site Layout Plan

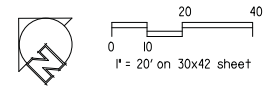


ACCESSIBLE PARKING
 **CITY OF MADISON REQUIRES MIN. 5 ACC. STALLS FOR 141 TOTAL PARKING STALLS (1 STALL MUST BE VAN ACCESSIBLE)

TOTAL STALLS	AT GRADE ACC.	BELOW GRADE ACC.	TOTAL ACC.
6 AT-GRADE 135 UNDERGRND.	1 UNIV. ACC.	4	5

BICYCLE PARKING
 **CITY OF MADISON REQUIRES 1 BIKE PARKING STALL PER 10 AUTOMOBILE PARKING SPACES

TOTAL AUTO. STALLS	BIKE STALLS REQUIRED	BIKE STALLS AT GRADE	BIKE STALLS INTERIOR	TOTAL BIKE STALLS PROVIDED
141	14	12	119 ROOM	131





ARCHITECT
 VALERIO DEWALT TRAIN ASSOC.
 500 N. DEARBORN, 8TH FLOOR
 CHICAGO, ILLINOIS 60654
 312.260.7300
 www.valeriodt.com

PROJECT TEAM ARCHITECT STAMP

VOTA PROJECT NUMBER
 11101.00

CONSULTANT

 KEN SAKI
 DESIGN INC.
 LANDSCAPE
 ARCHITECTS
 403 S. PATTERSON
 MADISON, WI 53703
 Phone: 608.851.2020
 Fax: 608.851.1515

CONSULTANT PROJECT NUMBER
 2011-039

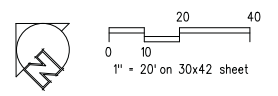
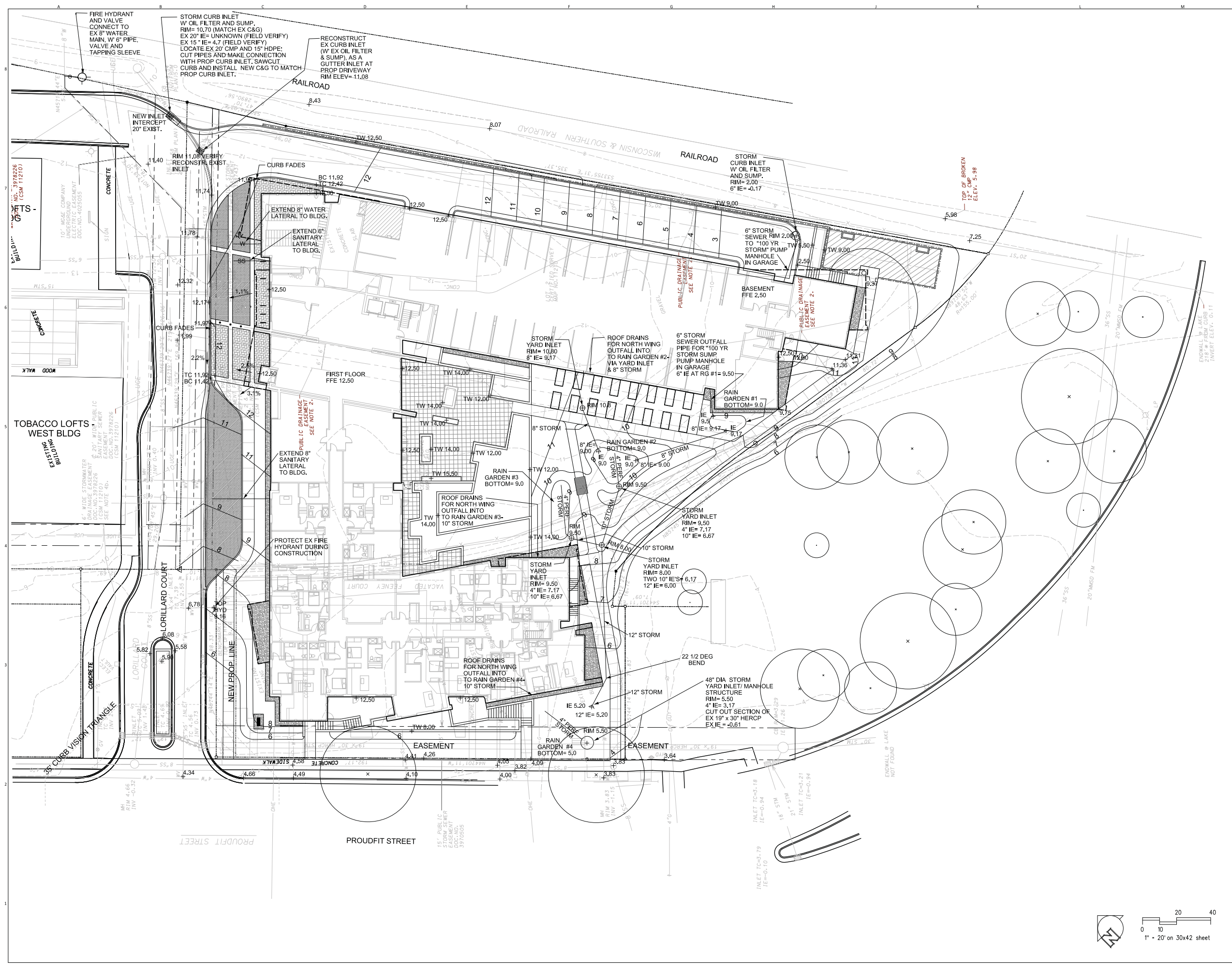
No.	Issue Issued for	Date
1	ISSUED FOR PRICING	02.01.2012
2	PLAN COM/UDC	03.07.2012

© 2012 VALERIO DEWALT TRAIN ASSOCIATES, INC.

SHEET TITLE
Site Utility Plan



SHEET NUMBER
L-400





ARCHITECT
 VALERIO DEWALT TRAIN ASSOC.
 500 N. DEARBORN, 5TH FLOOR
 CHICAGO, ILLINOIS 60654
 312.260.7300
 www.buildordie.com
 PROJECT TEAM ARCHITECT STAMP

VOTA PROJECT NUMBER
 11101.00

CONSULTANT

 KEN SAKI
 DESIGN INC.
 LANDSCAPE
 ARCHITECTS
 400 S. PATERSON
 MADISON, WI 53703
 Phone: 608.851.1000
 www.ksd-ia.com
 CONSULTANT PROJECT NUMBER
 2011-039

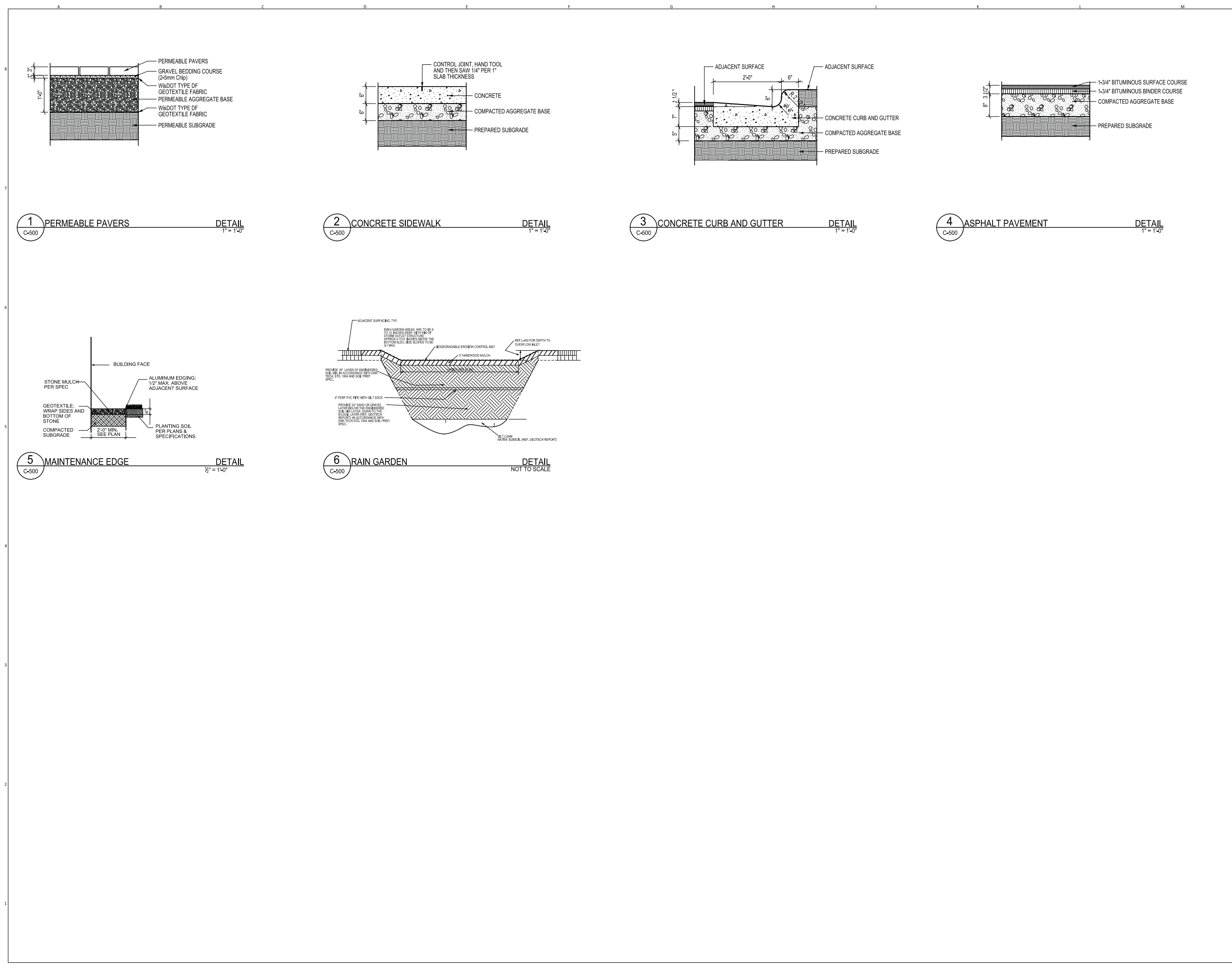
Issue		
No.	Issued for	Date
1	ISSUED FOR PRICING	02.01.2012
2	PLAN COM/UDC	03.07.2012

© 2012 VALERIO DEWALT TRAIN ASSOCIATES, INC.

SHEET TITLE
Sheet Name
Site Details



SHEET NUMBER
L-500





ARCHITECT
 VALERIO DEWALT TRAIN ASSOC.
 500 N. DEARBORN, 8TH FLOOR
 CHICAGO, ILLINOIS 60654
 312.260.7300
 www.valeriodt.com

VOTA PROJECT NUMBER
 11101.00



CONSULTANT PROJECT NUMBER
 2011-039

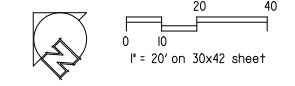
No.	Issue	Date
1	ISSUED FOR PRICING	02.01.2012
2	PLAN COM/UDC	03.07.2012

© 2012 VALERIO DEWALT TRAIN ASSOCIATES, INC.

SHEET TITLE
Site Planting Plan

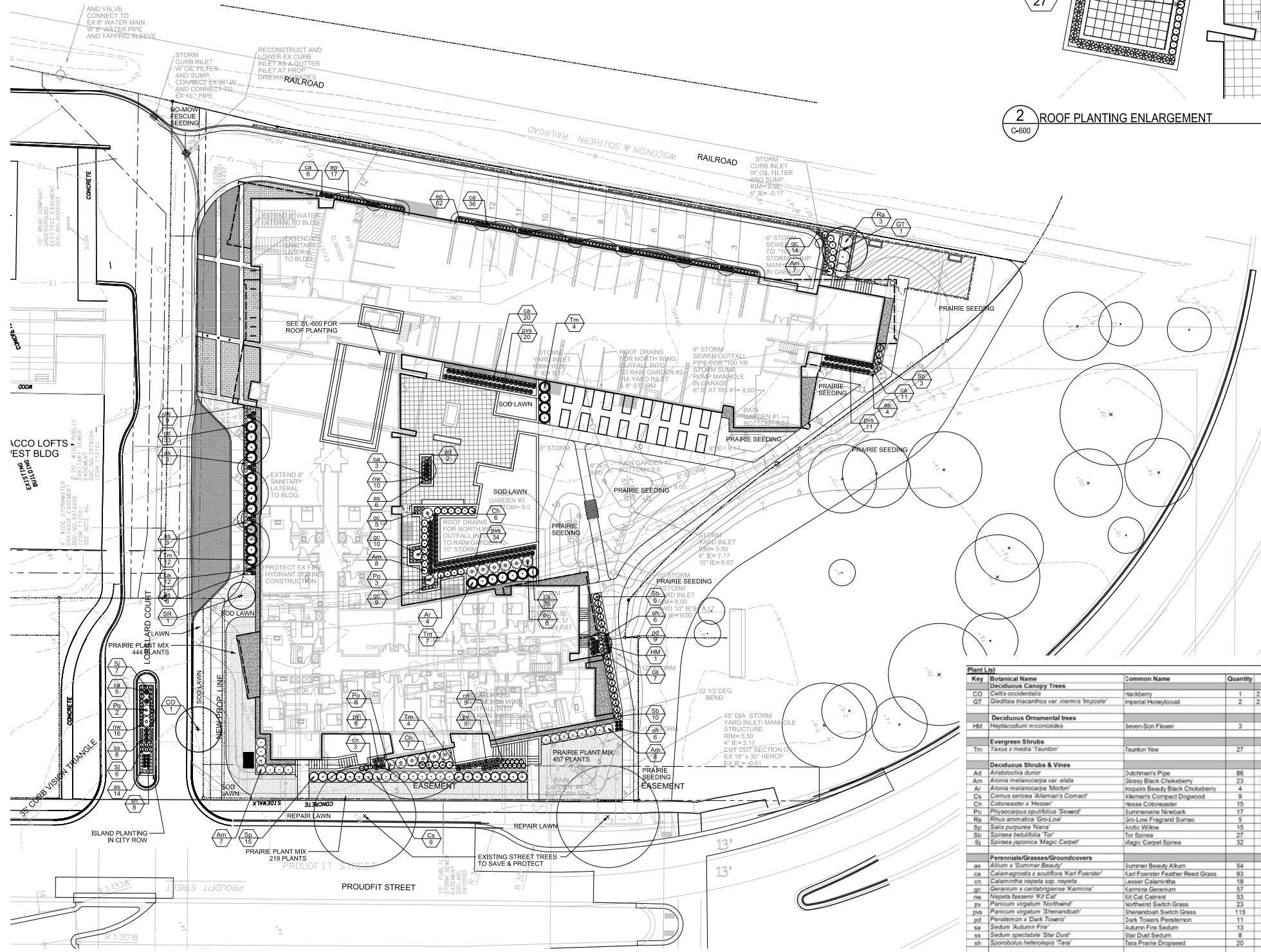
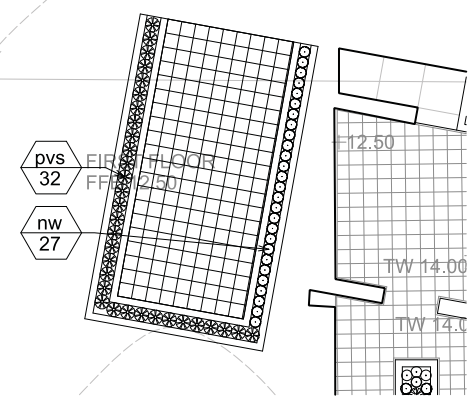


SHEET NUMBER
L-600



- NOTE:**
- All plant beds and mulch rings shall have shredded hardwood bark mulch unless otherwise noted.
 - All plant beds shall have shovel-cut edging unless otherwise noted.
 - All disturbed areas shall be repaired with indicated seed or sod.
 - Contact City Forestry regarding any pruning of existing street trees.
 - If any street trees are damaged or need to be removed to accommodate construction, the appraised value of the tree(s) will need to be paid. The planned removal of street trees includes all brush and stump removal.
 - Install tree protection fencing at least 5'-0" on each side of all existing trees for the width of the terrace area to protect the structural support roots. If any excavation is needed within 5'-0" of the trees, City Forestry shall be called to evaluate the excavation and approve any root cutting.
 - Landscape contractor shall contact City Forestry at least 48 hours prior to planting street trees to approve planting stock and mark the tree locations. Contact Dean Kahl, 608-266-4816, DKahl-cityofmadison.com

2 ROOF PLANTING ENLARGEMENT
 C-600 DETAIL 1" = 10'-0"



City of Madison - Landscape Worksheet

Element	Point Value	Quantity	Points Achieved	Points	Credits
Number of Parking Stalls					6
Total Sq. Footage of Storage Area					1
Number of Canopy Shade Trees					1
Required: 2" - 2 1/2" cal					
No. of Landscape Points Required					30
Points for Loading Area Required					0
Number of Points Required					30
Element					
Canopy Tree: 2" - 2 1/2"	35		0		0
Deciduous Shrub	2		0		0
Evergreen Shrub	3	12	36		0
Decorative Wall or Fence (per 10 L.F.)	5		0		0
Earth Berm (per 10 L.F.)					0
Avg. Height 30"	5		0		0
Avg. Height 15"	2		0		0
Evergreen Trees	15		0		0
3' height minimum					0
Canopy Tree or Small Tree	15		0		0
1 1/2" - 2" Caliper (i.e., Crab, Hawthorn)					0
Sub-Totals			36		0
Total Points					36

Plant List

Key	Botanical Name	Common Name	Quantity	Size	Spec	Comments	Mature Size
cd	Deciduous Canopy Trees						
CO	<i>Celtis occidentalis</i>	Hackberry	1	2 1/2' Cal.	B.8	Single, straight leader; match specimens; branching shall start at 5'-0" min.	40-60' H x 40-60' sp.
GT	<i>Gleditsia inaequalis</i> var. <i>inermis</i> 'Impol'	Imperial Honeylocust	2	2 1/2' Cal.	B.8	Single, straight leader; match specimens; branching shall start at 5'-0" min.	30-40' H x 30-35' sp.
Deciduous Ornamental trees							
HM	<i>Hydrangea macrophylla</i>	Seven-Son Flower	3	8' H.	B.8	Multistem, min. 3 leaders, well-developed crown/overlapping leaders	10-20' H x 8-15' sp.
Evergreen Shrubs							
Tm	<i>Taxus x media</i> 'taunton'	Taunton Yew	27	5 gal.	Cort.	Space 4'-6" o.c.	3-5' H x 3-6' sp.
Deciduous Shrubs & Vines							
Ad	<i>Aristolochia dioica</i>	Dutchman's Pipe	86	2 gal.	Cort.	Space 2'-0" o.c.	30' H x 1.5-2' sp.
Am	<i>Aronia melanocarpa</i> var. <i>viridis</i>	Spicy Black Chokeberry	23	5 gal.	Cort.	Space 4'-0" o.c.	1.5-2' H x 1.5-2' sp.
Ar	<i>Aronia melanocarpa</i> 'Morton'	Icebox Beauty Black Chokeberry	4	3 gal.	Cort.	Space 3'-0" o.c.	2-3' H x 3-4' sp.
Cs	<i>Cornus sericea</i> 'Alleman's Compact'	Alleman's Compact Dogwood	9	5 gal.	Cort.	Space 4'-0" o.c.	4-5' H x 4-5' sp.
Ch	<i>Cotoneaster x Hessei</i>	Hessei Cotoneaster	15	3 gal.	Cort.	Space 3'-0" o.c.	18" H x 3-5' sp.
Pv	<i>Physocarpus opulifolius</i> 'Seward'	Symmetrical Ninespark	17	5 gal.	Cort.	Space 5'-0" o.c.	3-6' H x 5-6' sp.
Ra	<i>Rhus aromatica</i> 'Gro-Low'	Gro-Low Fragrant Sumac	5	5 gal.	Cort.	Space 6'-0" o.c.	3-4' H x 6-8' sp.
Sp	<i>Salix purpurea</i> 'Wang'	Arctic Willow	15	5 gal.	Cort.	Space 4'-0" o.c.	3-6' H x 3-6' sp.
Sh	<i>Spirea betulifolia</i> 'Tir'	Top Spirea	27	3 gal.	Cort.	Space 2'-0" o.c.	2-3' H x 2-3' sp.
Sp	<i>Spirea japonica</i> 'Magic Carpet'	Magic Carpet Spirea	32	3 gal.	Cort.	Space 2'-0" o.c.	11-2' H x 1-3' sp.
Perennials/Grasses/Groundcovers							
as	<i>Allium x Summer Beauty</i>	Summer Beauty Allium	54	1 gal.	Cort.	Space 18" o.c.	1.5' H x 1.5' sp.
ca	<i>Calamagrostis x acutiflora</i> 'Karl Foerster'	Karl Foerster Feather Reed Grass	93	3 gal.	Cort.	Space 24" o.c.	4-6' H x 2-3' sp.
cn	<i>Calamintha nepeta</i> ssp. <i>nepota</i>	Lesser Calamintha	18	1 gal.	Cort.	Space 24" o.c.	1.5-2' H x 1.5-2' sp.
gc	<i>Geranium x cantabrigiae</i> 'Kammina'	Kammina Geranium	57	1 gal.	Cort.	Space 18" o.c.	9-12" H x 18-24" sp.
nc	<i>Nepeta faassenii</i> 'Vic Car'	Kit Cat Catmint	53	1 gal.	Cort.	Space 18" o.c.	11-17" H x 1.5-2' sp.
pvs	<i>Panicum virgatum</i> 'Northwind'	Northwind Switch Grass	23	3 gal.	Cort.	Space 30" o.c.	4-6' H x 2-3' sp.
pvs	<i>Panicum virgatum</i> 'Shenandoah'	Shenandoah Switch Grass	115	3 gal.	Cort.	Space 24" o.c.	3-5' H x 2-3' sp.
sd	<i>Sedum spectabile</i> 'Dark Towers'	Dark Towers Sedum	11	1 gal.	Cort.	Space 18" o.c.	2-3' H x 1.5-2' sp.
ss	<i>Sedum 'Autumn Fire'</i>	Autumn Fire Sedum	13	1 gal.	Cort.	Space 18" o.c.	1.5-2' H x 1.5-2' sp.
ss	<i>Sedum spectabile</i> 'Star Dust'	Star Dust Sedum	8	1 gal.	Cort.	Space 18" o.c.	10" H x 1-2' sp.
sh	<i>Sporobolus heterolepis</i> 'Tara'	Tara Prairie Dropseed	20	1 gal.	Cort.	Space 18" o.c.	1.5-2' H x 1.5' sp.
Prairie Plant Mix							
Asclepias tuberosa	Butterfly Weed	56	4"	Cort.		2-3' H x 1.5-2' sp.	
Aster novae-angliae	Purple Dome*	56	4"	Cort.		1.5-2' H x 1.5-2' sp.	
Baptisia leucantha (ficta)	White Wild Indigo	56	4"	Cort.		3-4' H x 2' sp.	
Bouteloua curtipendula	Side Oats Grass	168	4"	Cort.		2-3' H x 1.5-2' sp.	
Dalea purpurea	Purple Prairie Clover*	56	4"	Cort.		2-3' H x 1.5-2' sp.	
Echinacea purpurea	Pink Purple Coneflower	112	4"	Cort.		2-3' H x 1.5-2' sp.	
Liatris spicata 'Kobold'	Kobold Spike Blazing Star	56	4"	Cort.		2-4' H x 1.5' sp.	
Panicum virgatum 'Shenandoah'	Shenandoah Switch Grass	168	4"	Cort.		3-5' H x 2-3' sp.	
Rudbeckia hirta 'Goldsturm'	Goldsturm Showy Cowflower	56	4"	Cort.		2-3' H x 1.5-2' sp.	
Schizachyrium scoparium	Little Bluestem	168	4"	Cort.		3-4' H x 1.5-2' sp.	
Sporobolus heterolepis	Prairie Dropseed	168	4"	Cort.		1.5-2' H x 1.5' sp.	

PROJECT NAME
**FINDORFF YARDS
 RESIDENTIAL
 APARTMENT**

PROJECT ADDRESS
**727 LORILLARD COURT
 MADISON, WI 53703**



ARCHITECT
 VALERIO DEWALT TRAIN ASSOC.
 500 N. DEARBORN, 5TH FLOOR
 CHICAGO, ILLINOIS 60654
 312.260.7300
 www.valeriodt.com

PROJECT TEAM ARCHITECT STAMP

VOTA PROJECT NUMBER
 11101.00

CONSULTANT

 KEN SALKI
 DESIGN INC.
 LANDSCAPE
 ARCHITECTS
 403 S. PATTERSON
 MADISON, WI 53703
 Phone: 608.831.8700
 www.ksd-ia.com

CONSULTANT PROJECT NUMBER
 2011-039

No.	Issue Issued for	Date
1	ISSUED FOR PRICING	02.01.2012
2	PLAN COM/UDC	03.07.2012

© 2012 VALERIO DEWALT TRAIN ASSOCIATES, INC.

SHEET TITLE
**Sheet Name
 Fire Access Plan**



SHEET NUMBER
L-700

