

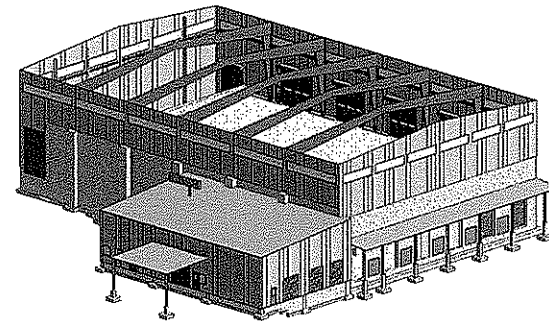
DANE COUNTY WASTE TRANSFER STATION AND HOUSEHOLD HAZARDOUS WASTE FACILITY RODEFIELD LANDFILL

CIVIL

- C500 SITE PLAN
- C400 GRADING PLAN
- C500 UTILITY PLAN

ARCHITECTURAL

- A101 HHW FIRST FLOOR PLAN/WTS LOWER LEVEL PLAN
- A102 HHW MEZZANINE/WTS UPPER LEVEL PLAN
- A300 BUILDING ELEVATIONS
- A301 BUILDING ELEVATIONS
- A400 BUILDING SECTIONS
- A401 BUILDING SECTIONS



CONSULTANTS:

PROJECT TITLE:

DANE COUNTY
WASTE TRANSFER STATION
AND HOUSEHOLD HAZARDOUS
WASTE FACILITY
RODEFIELD LANDFILL

ISSUE:

PROJECT INFORMATION:

PROJECT NUMBER: 2009-0328.00
DATE: 12-10-2009
DRAWN BY: PAP
CHECKED BY: JHK
APPROVED BY: JHK
SCALE: AS NOTED

SHEET TITLE:

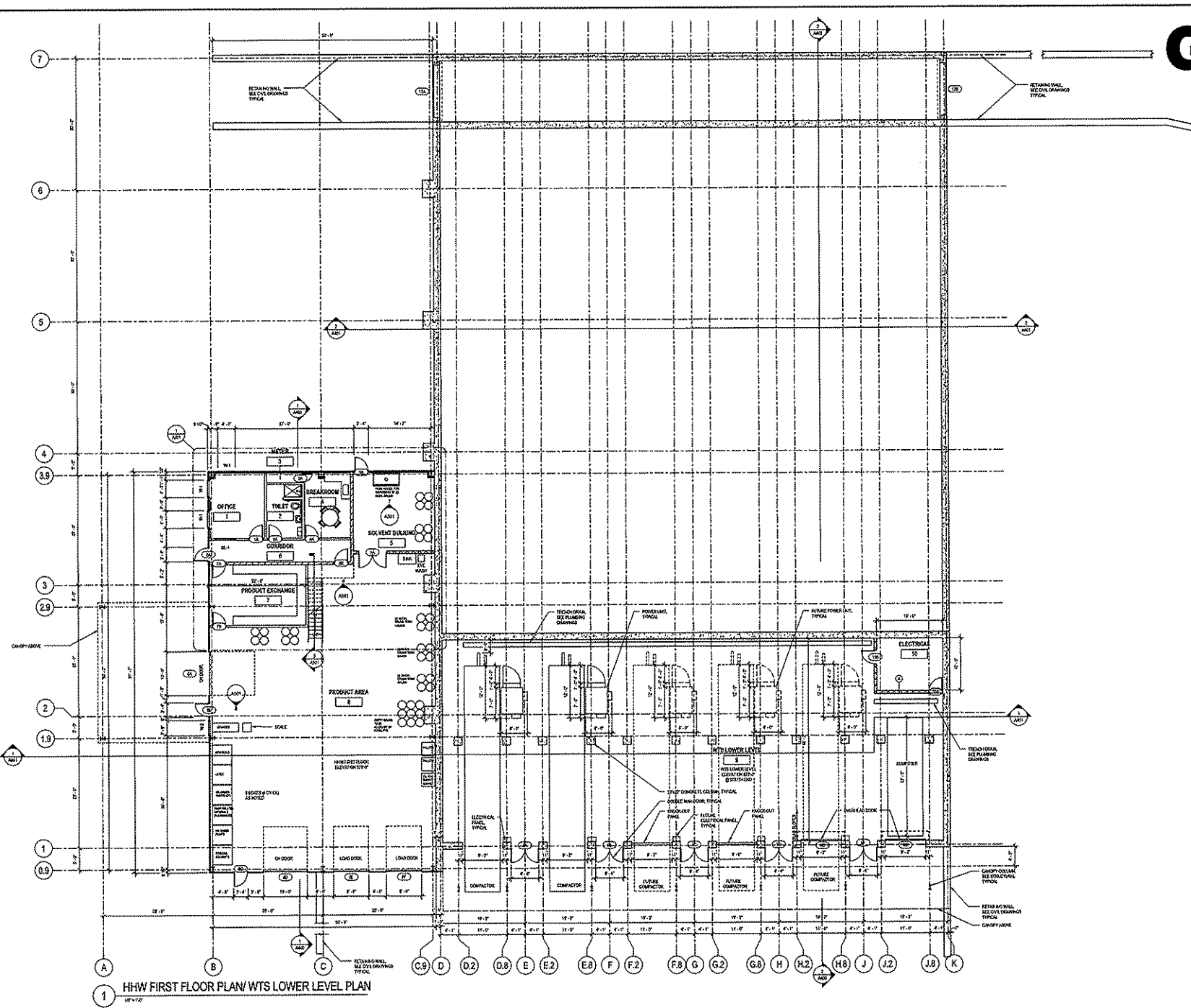
TITLE SHEET

SHEET NUMBER:

T100

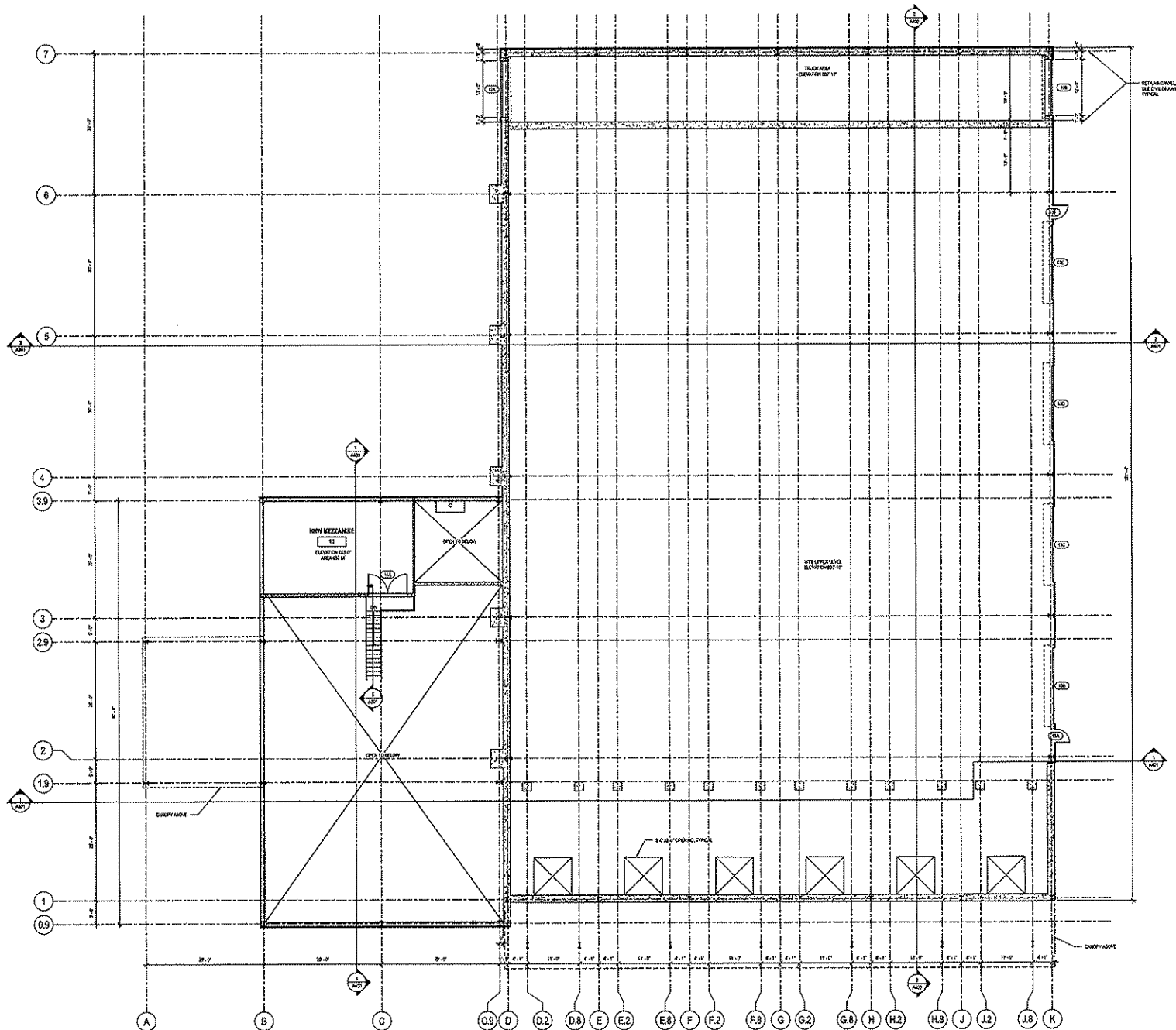
CITY APPLICATION

12-10-2009



1 HHW FIRST FLOOR PLAN/WTS LOWER LEVEL PLAN

C:\Documents and Settings\jgarcia\My Documents\2009-0328_A_PJP\pennymj.dwg
 11/19/2009 08:52:30 PM



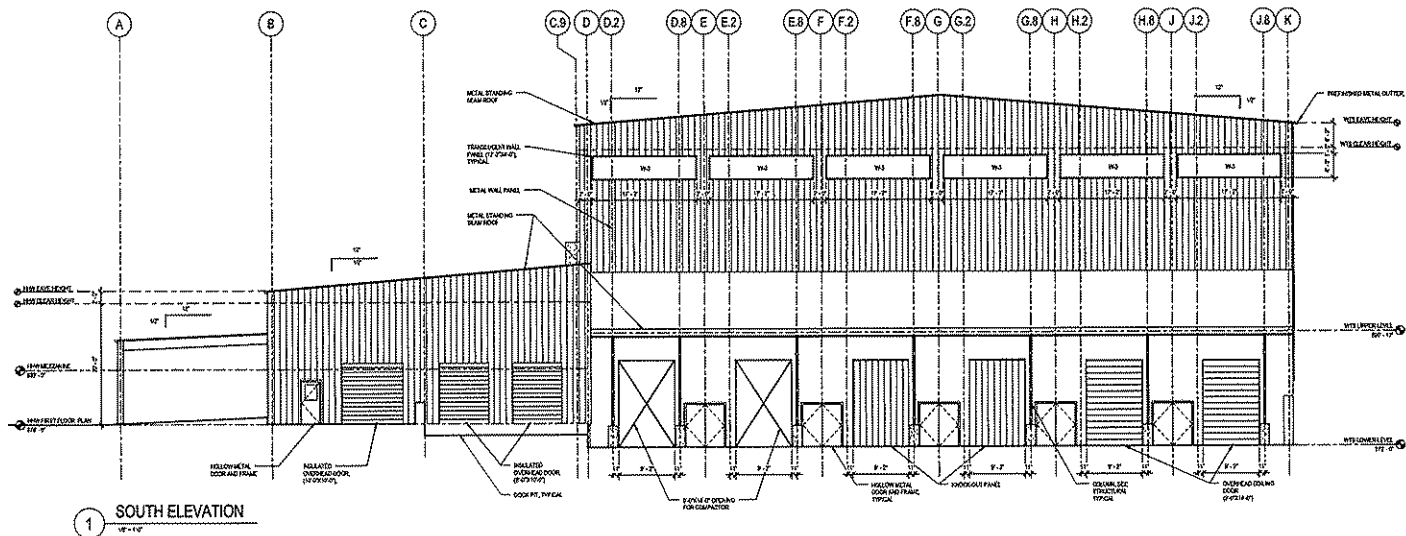
1 HHW MEZZANINE PLAN/WTS UPPER LEVEL PLAN
1/11/09

PROJECT INFORMATION:
PROJECT NUMBER: 2009-0326.00
DATE: 11-19-2009
DRAWN BY: PJP
CHECKED BY: SEB
APPROVED BY: JHK
SCALE: AS NOTED

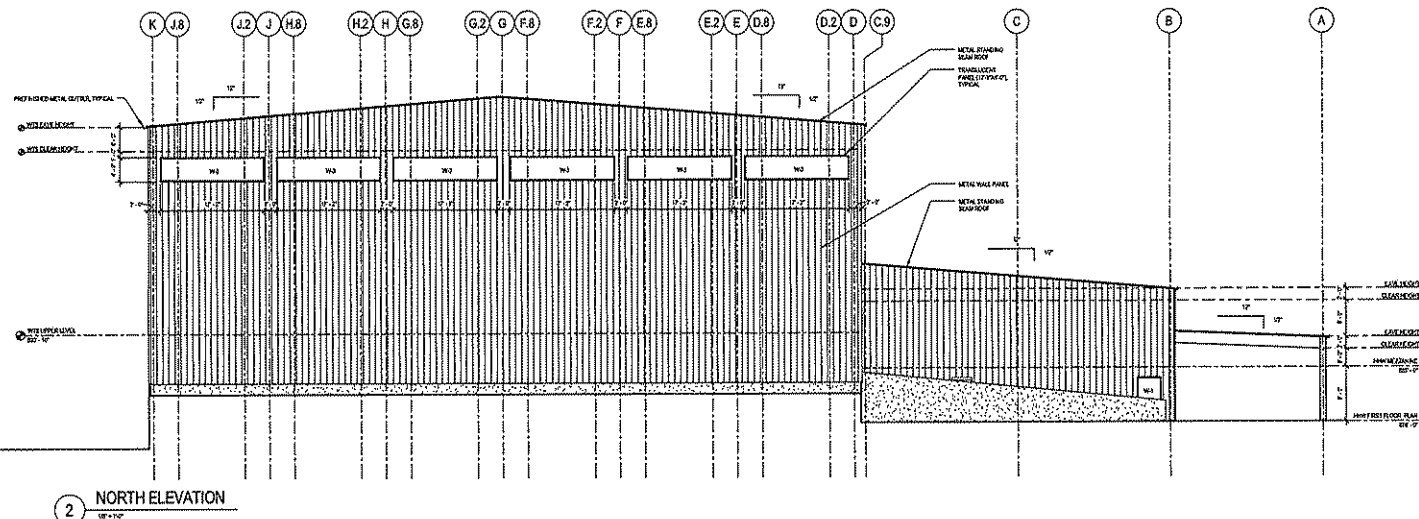
SHEET TITLE:
HHW MEZZANINE PLAN/WTS
UPPER LEVEL PLAN

SHEET NUMBER:

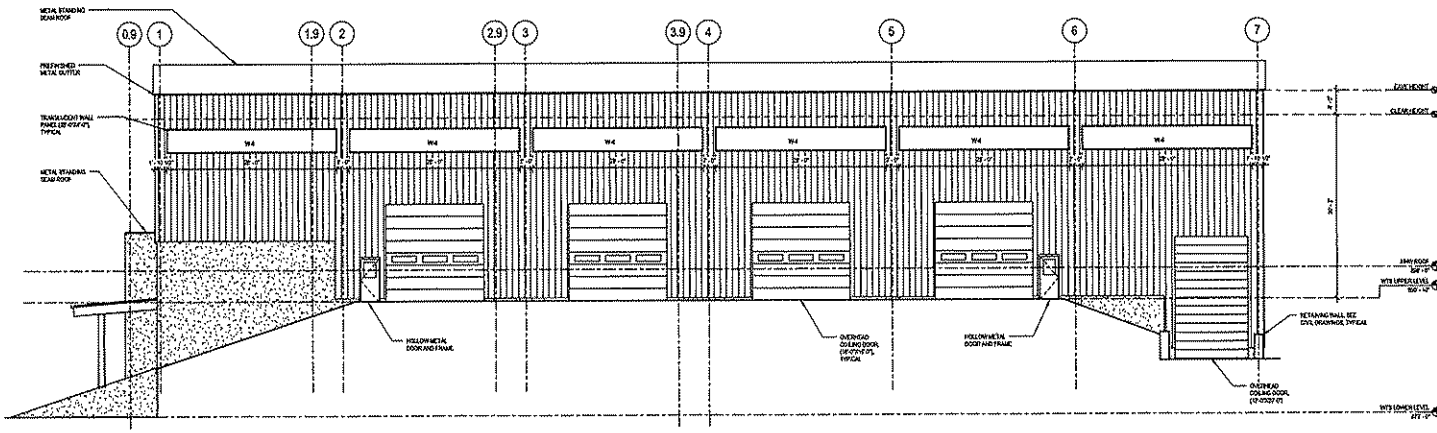
A102



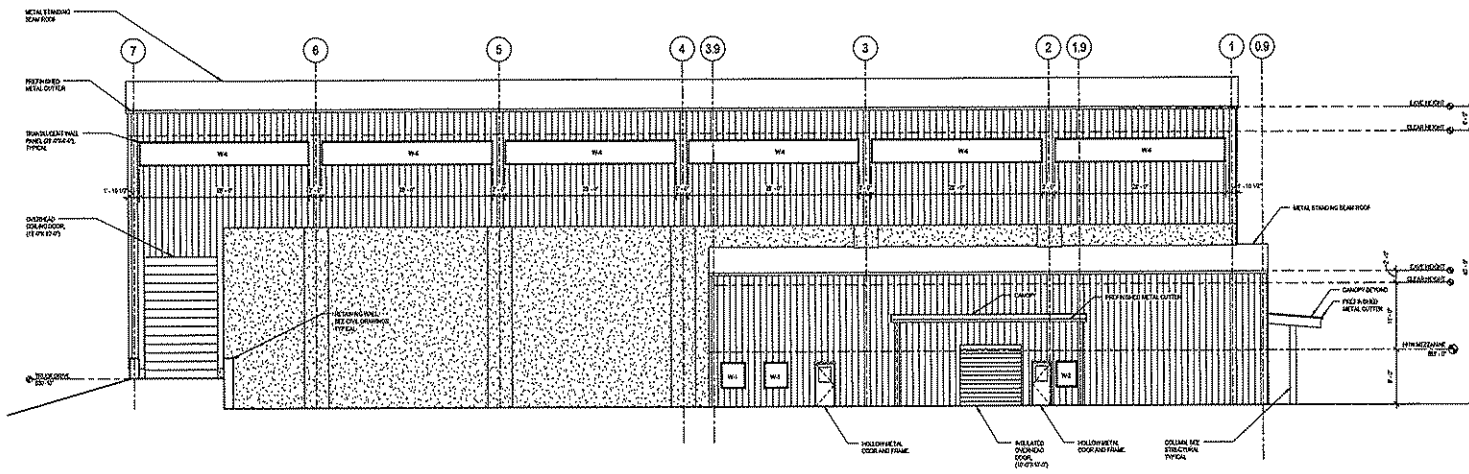
1 SOUTH ELEVATION
1/8" = 1'-0"



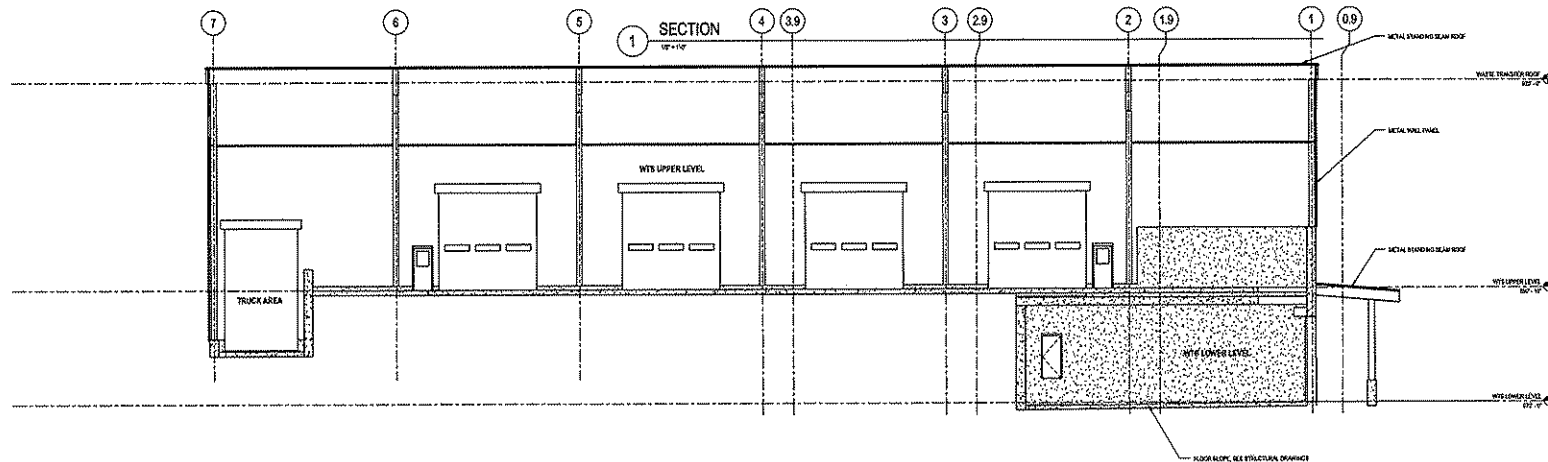
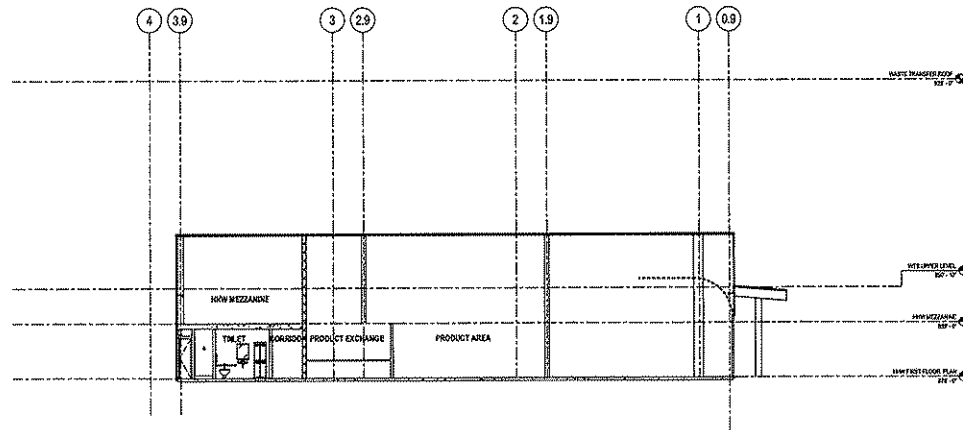
2 NORTH ELEVATION
1/8" = 1'-0"



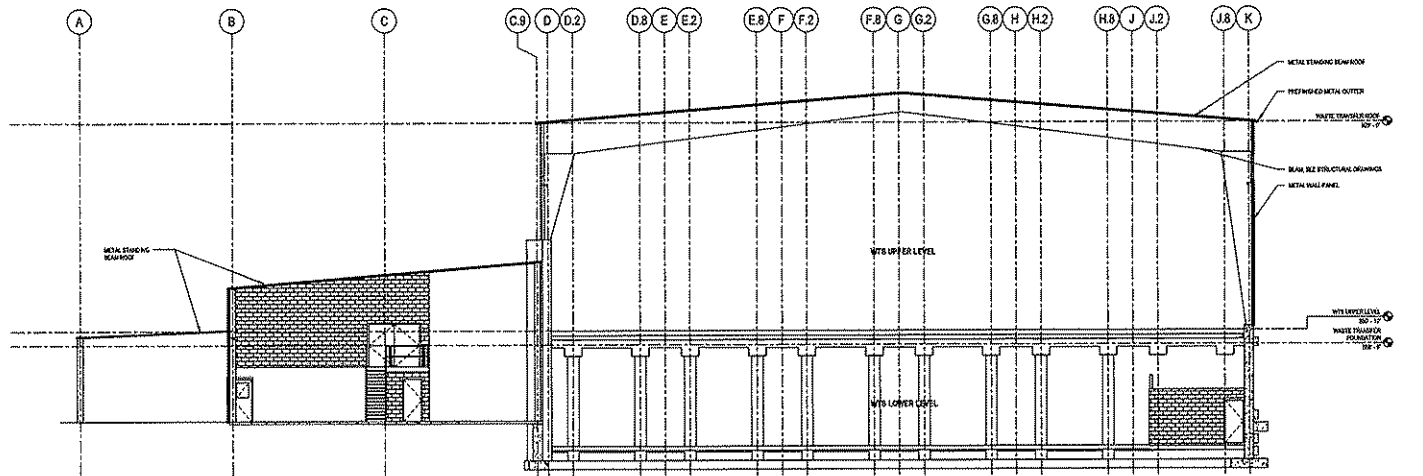
1 EAST ELEVATION
1/8" = 1'-0"



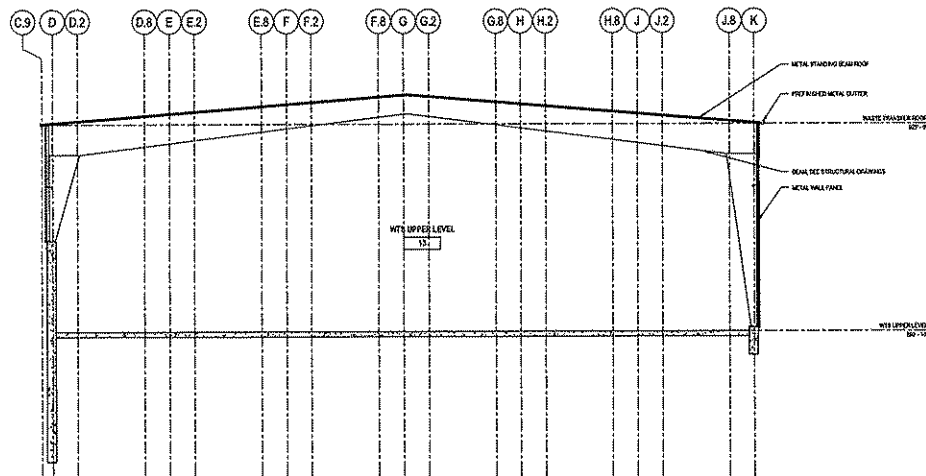
2 WEST ELEVATION
1/8" = 1'-0"



2 SECTION
1/4" = 1'-0"



1 SECTION
WTS-112



2 SECTION
WTS-112