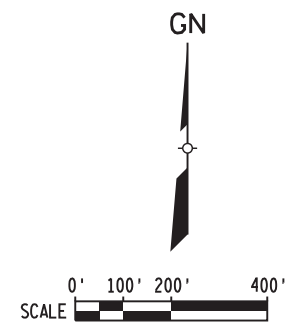


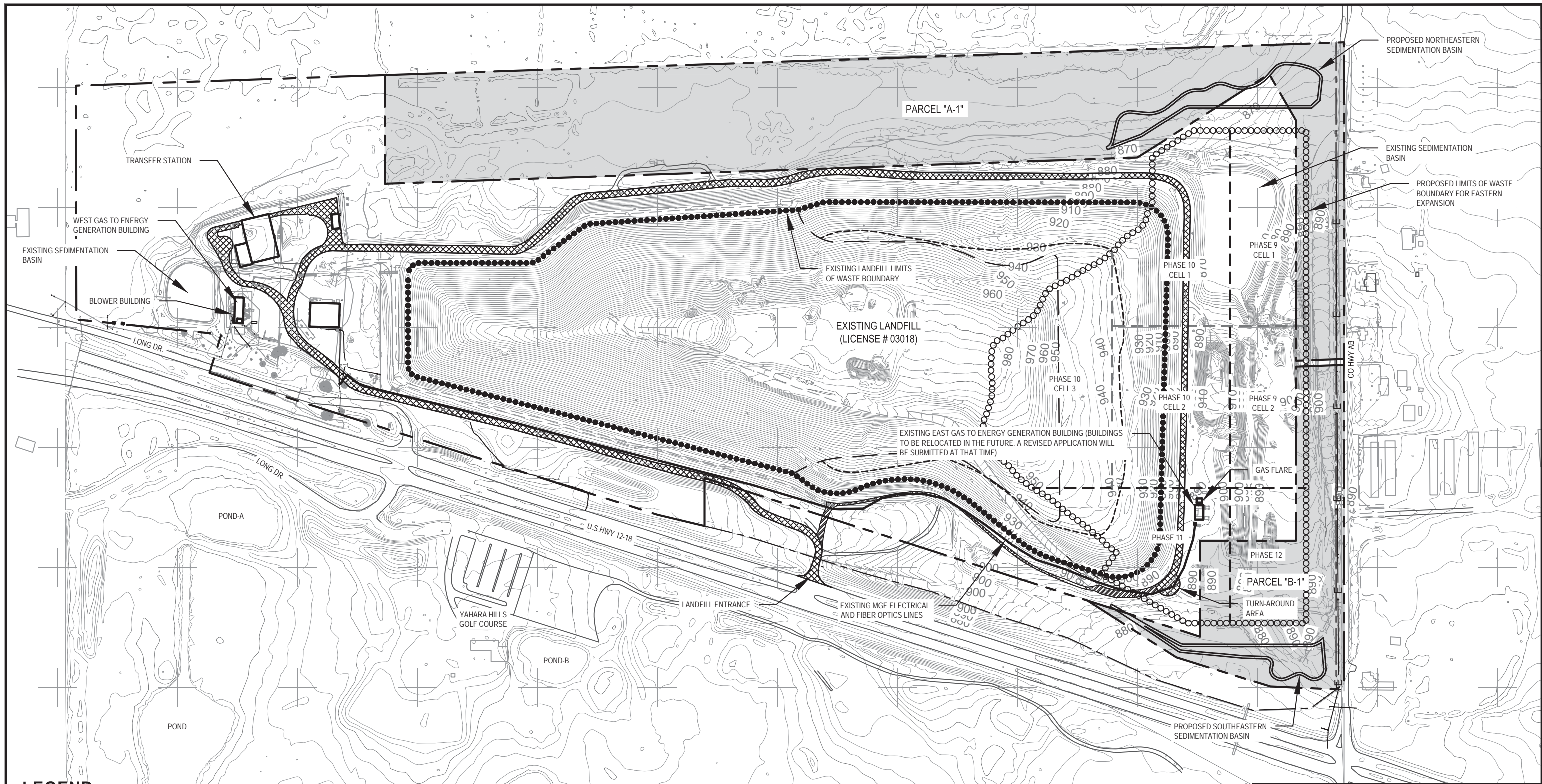
CERTIFICATE OF SURVEY

BEING PART OF THE NE 1/4 OF NE 1/4, PART OF THE SE 1/4 OF THE NE 1/4,
 PART OF THE NW 1/4 OF THE NE 1/4, PART OF THE SW 1/4 OF THE NE 1/4 ,
 PART OF THE NE 1/4 OF THE NW 1/4 AND PART OF THE NE 1/4 OF THE SE 1/4,
 SECTION 25, TOWNSHIP 7 NORTH, RANGE 10 EAST, CITY OF MADISON,
 DANE COUNTY, WISCONSIN



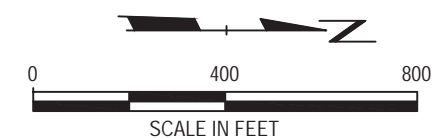
BEARING ARE REFERENCED TO NAD 83 (2007)
 MONUMENTS USED WERE MONONA GPS, COTTAGE
 GROVE W GPS AND BLOOMING GROVE S GPS.

- LEGEND:**
- ▲ SET MAG NAIL
 - FD R/W MONUMENT W/CAP
 - ⊙ FD 1 INCH IRON PIPE
 - (--) RECORDED AS
 - ⊙ SET 3/4" X 24" REBAR (WEIGHING 1.50 LBS/L.F.)

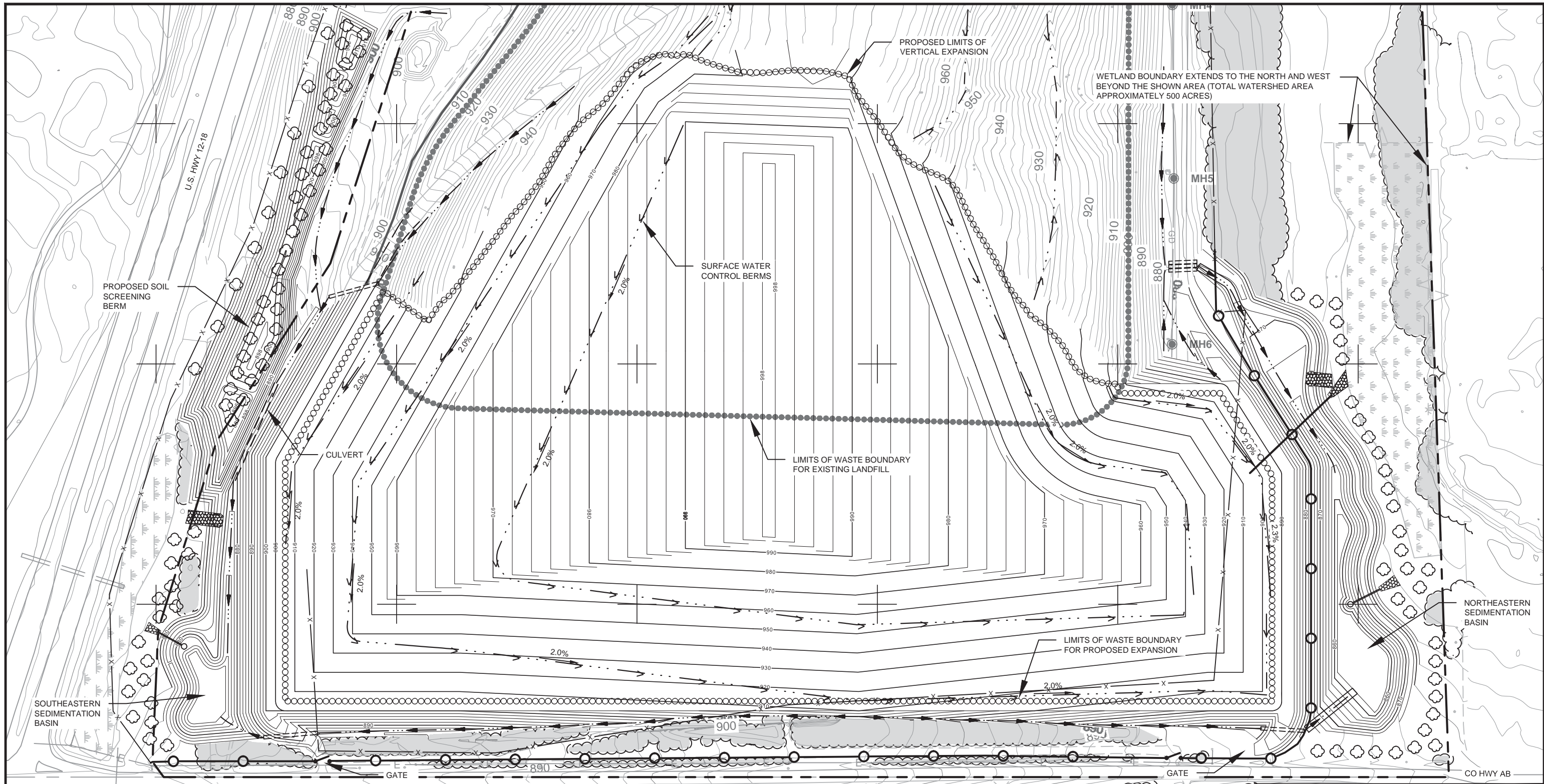


LEGEND

- EXISTING FIRE LANE LOCATION
- EXISTING RIGHT-OF-WAY LOCATION
- PROPOSED SEDIMENTATION BASIN LOCATION
- PROPOSED FUTURE FIRE LANE WHEN EXISTING FIRE LANE ON EAST END OF THE LANDFILL IS REMOVED FOR THE PROPOSED NEW EXPANSION
- OUTLINE OF EXISTING BUILDINGS
- PROPERTY TO BE PURCHASED FROM CITY OF MADISON
- EXISTING PROPERTY BOUNDARY



3.					
2.					
1.					
NO.	BY	DATE	REVISION	APPD.	
PROJECT: DANE COUNTY NO. 2 (RODEFELD) LANDFILL PROPOSED EASTERN EXPANSION DANE COUNTY, WISCONSIN					
SHEET TITLE: SITE PLAN					
DRAWN BY:	RNOLDEN	SCALE:		PROJ. NO:	194528.0004.000001
CHECKED BY:	DM	SCALE:		FILE NO:	194528.0004.01.dwg
APPROVED BY:	JCO	DATE PRINTED:		FIGURE 1	
DATE:	FEBRUARY 2014				
				708 Heartland Trail Suite 3000 Madison, WI 53717 Phone: 608.826.3600	



Trees Tolerant of Dry Soils

- Turkish Filbert (*Corylus colurna*)
- White Oak (*Quercus alba*)
- Bur Oak (*Quercus macrocarpa*)
- Ginkgo (*Ginkgo biloba*)
- Thornless Honeylocust (*Gleditsia triacanthos* var. *inermis*)
- Kentucky Coffeetree (*Gymnocladus dioica*)
- Hybrid Elms (*Ulmus* species)
- Common Hackberry (*Celtis occidentalis*)
- Northern Catalpa (*Catalpa Speciosa*)

Trees Tolerant of Wet Soil

- Black Gum (*Nyssa sylvatica*)
- Red Maple (*Acer rubrum*)
- Sycamore (*Platanus occidentalis*)
- Swamp White Oak (*Quercus bicolor*)
- River Birch (*Betula nigra*)
- Hackberry (*Celtis occidentalis*)
- Pin Oak (*Quercus palustris*)
- Baldcypress (*Taxodium distichum*)

LEGEND

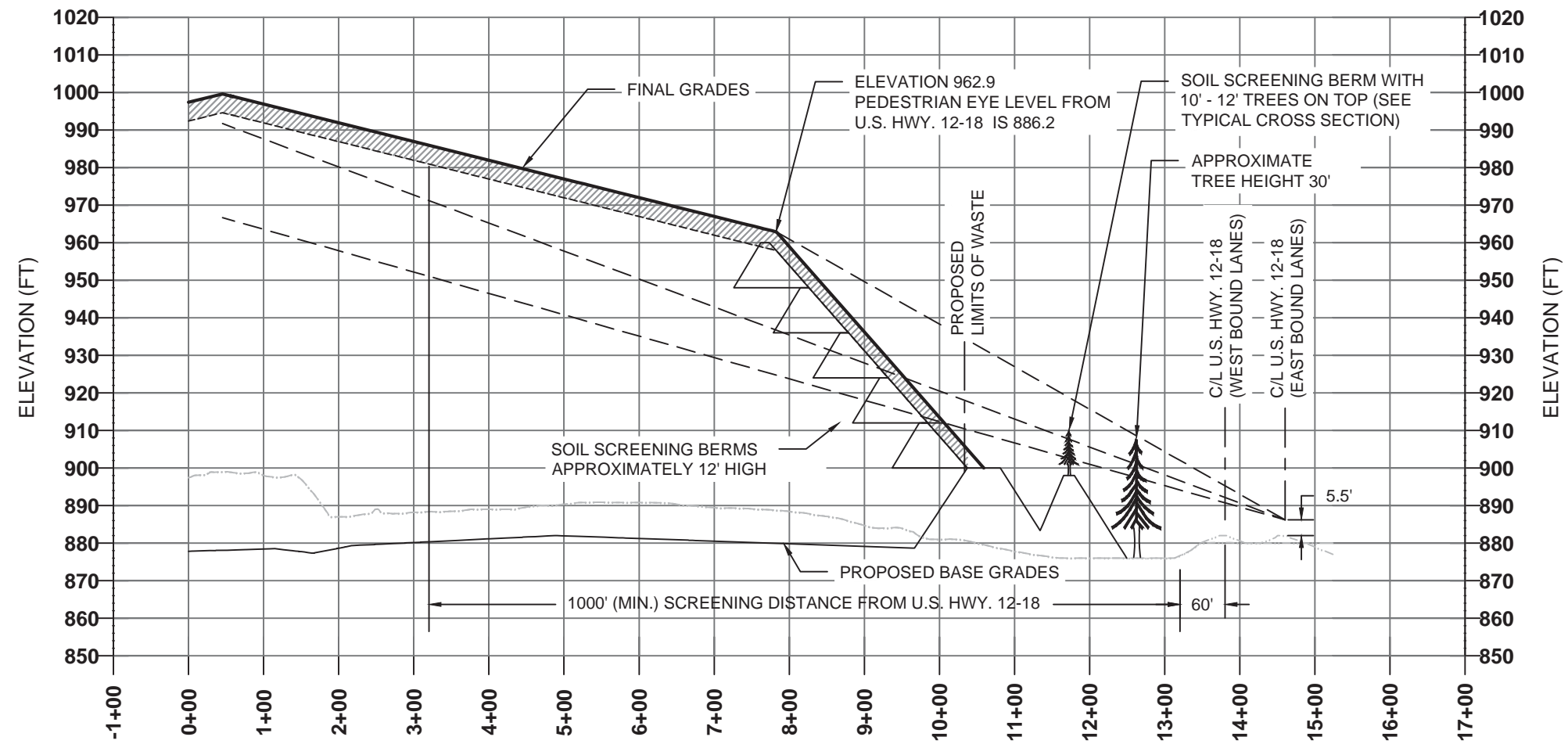
- PROPOSED LOCATION FOR PLANTING 10' TO 12' HIGH TREES
- PROPOSED BIRCH NEW FENCE LOCATION (6' HIGH CHAIN-LINK)
- EXISTING FENCE LOCATION (6' HIGH CHAIN-LINK)
- LOCATION OF EXISTING TREES TO BE PROTECTED AND MAINTAINED
- PROPOSED LOCATION FOR GATES

NOTES

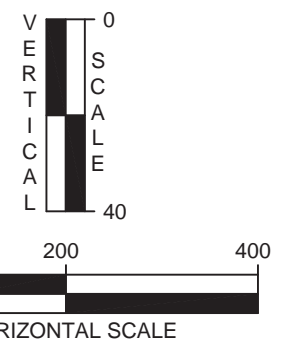
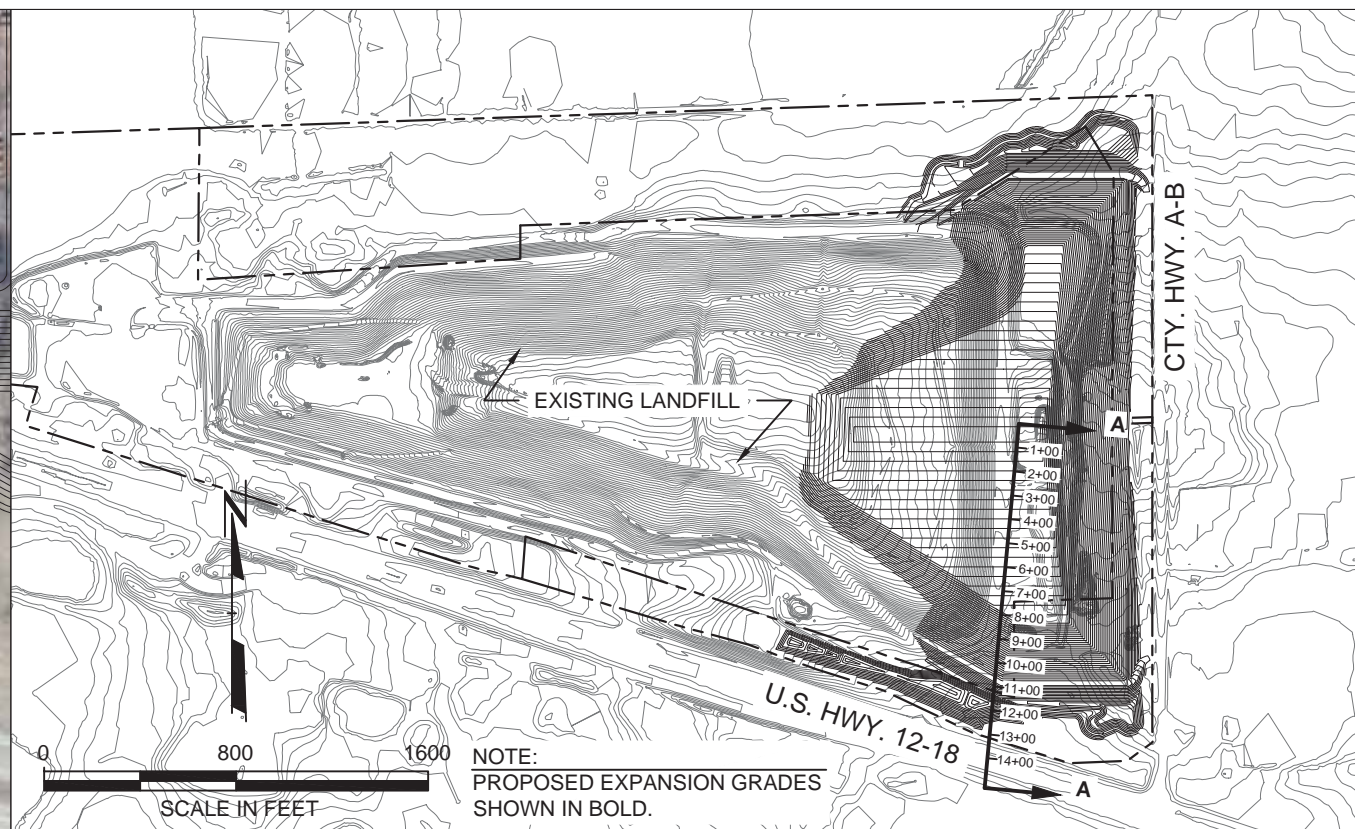
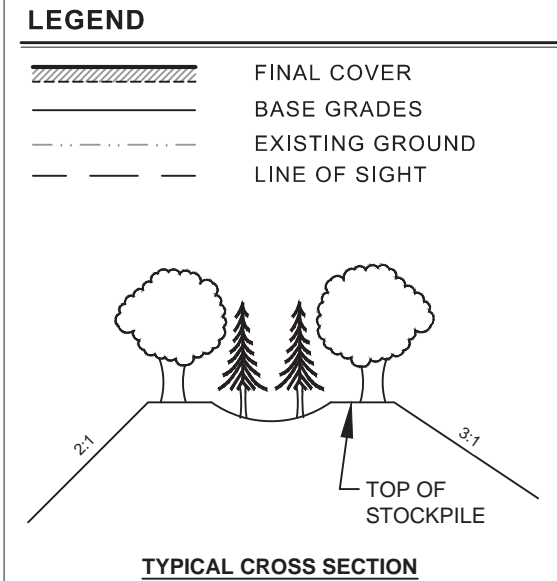
1. EXISTING TREES TO BE MAINTAINED ON THE EAST SIDE NEXT TO HIGHWAY AB ESTIMATED TO BE 20' TO 30' IN HEIGHT.



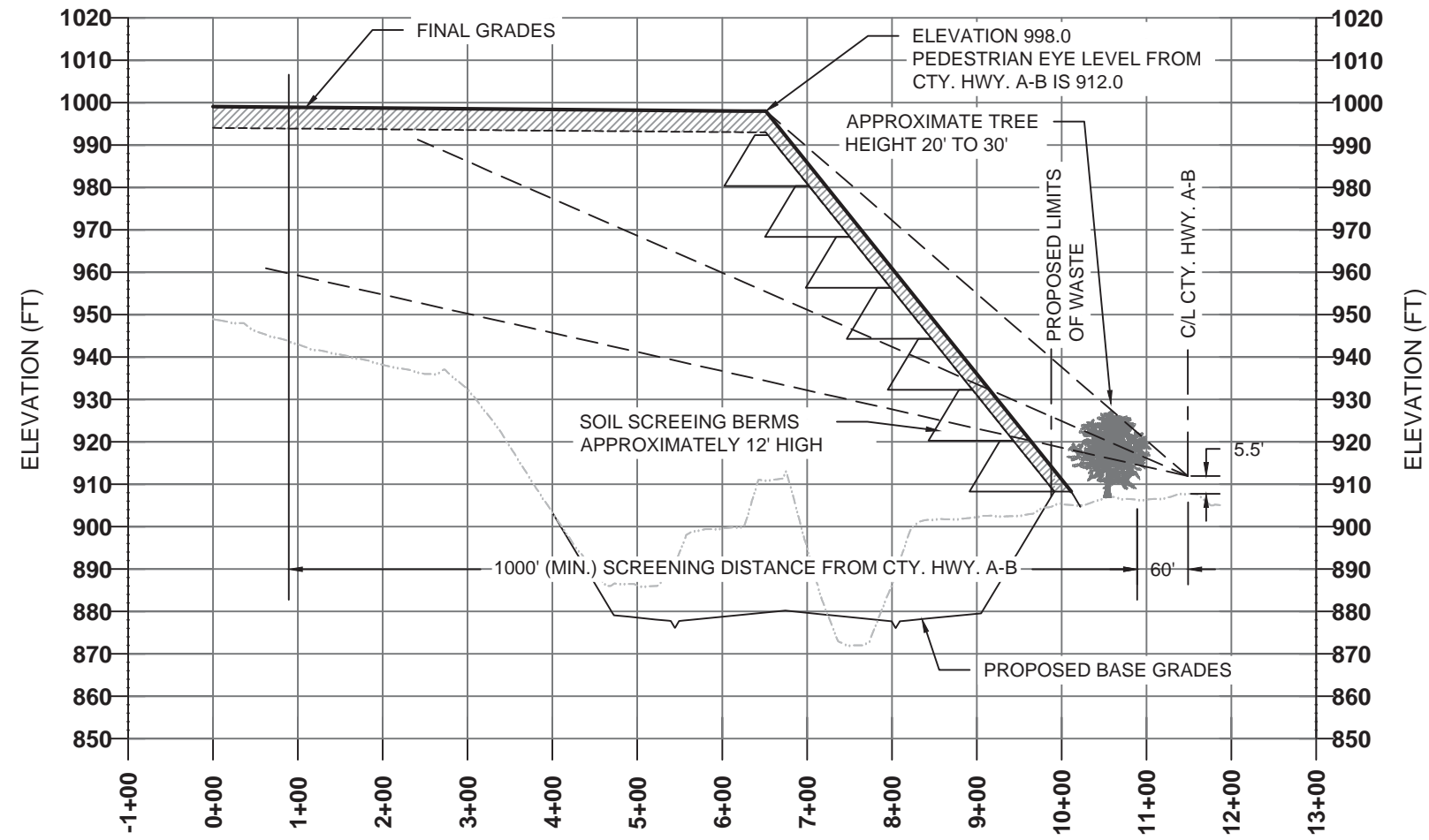
3.					
2.					
1.					
NO.	BY	DATE	REVISION	APPD.	
PROJECT: DANE COUNTY NO. 2 (RODEFELD) LANDFILL PROPOSED EASTERN EXPANSION DANE COUNTY, WISCONSIN					
SHEET TITLE: LANDSCAPE PLAN					
DRAWN BY: RNOLDEN		SCALE: AS SHOWN		PROJ. NO. 194528.0004.000001	
CHECKED BY: DM		DATE PRINTED:		FILE NO. 194528.0004.07.dwg	
APPROVED BY: JCO		DATE: FEBRUARY 2014		FIGURE 2	
				708 Heartland Trail Suite 3000 Madison, WI 53717 Phone: 608.826.3600	



PROFILE A



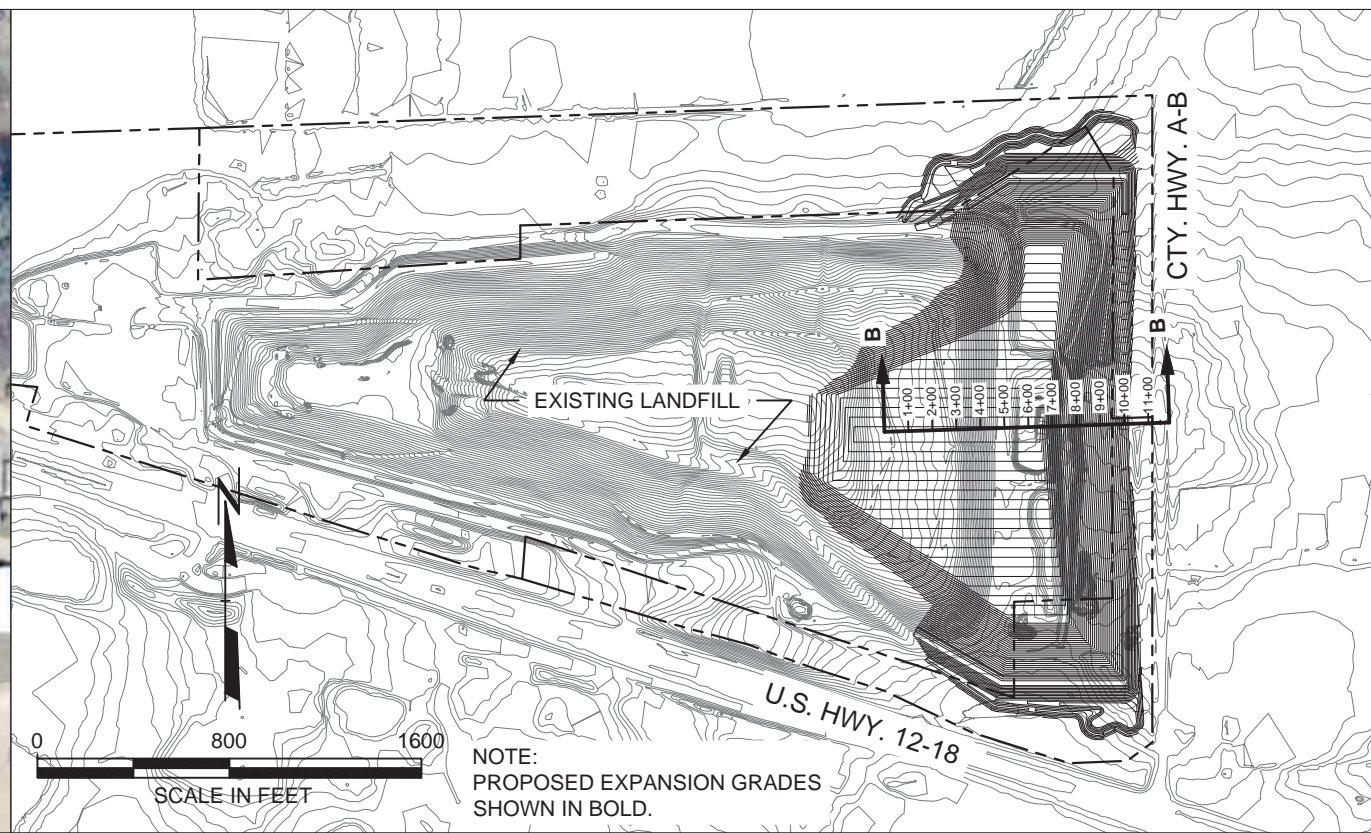
3.				
2.				
1.				
NO.	BY	DATE	REVISION	APPD.
PROJECT: DANE COUNTY NO. 2 (RODEFELD) LANDFILL PROPOSED EASTERN EXPANSION DANE COUNTY, WISCONSIN				
SHEET TITLE: LINE-OF-SIGHT AND SCREENING BERM FOR VIEW FROM U.S. HIGHWAY 12/18				
DRAWN BY: RNOLDEN		SCALE: AS SHOWN		PROJ. NO. 194528.0004.000001
CHECKED BY: DM		DATE PRINTED:		FILE NO. 194528.0004.03.dwg
APPROVED BY: JCO		DATE: FEBRUARY 2014		FIGURE 3
			708 Heartland Trail Suite 3000 Madison, WI 53717 Phone: 608.826.3600	



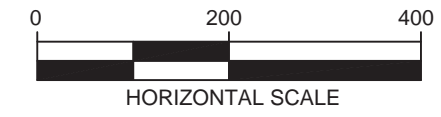
PROFILE B

LEGEND

	FINAL COVER
	BASE GRADES
	EXISTING GROUND
	LINE OF SIGHT







NOTE:
PROPOSED EXPANSION GRADES
SHOWN IN BOLD.

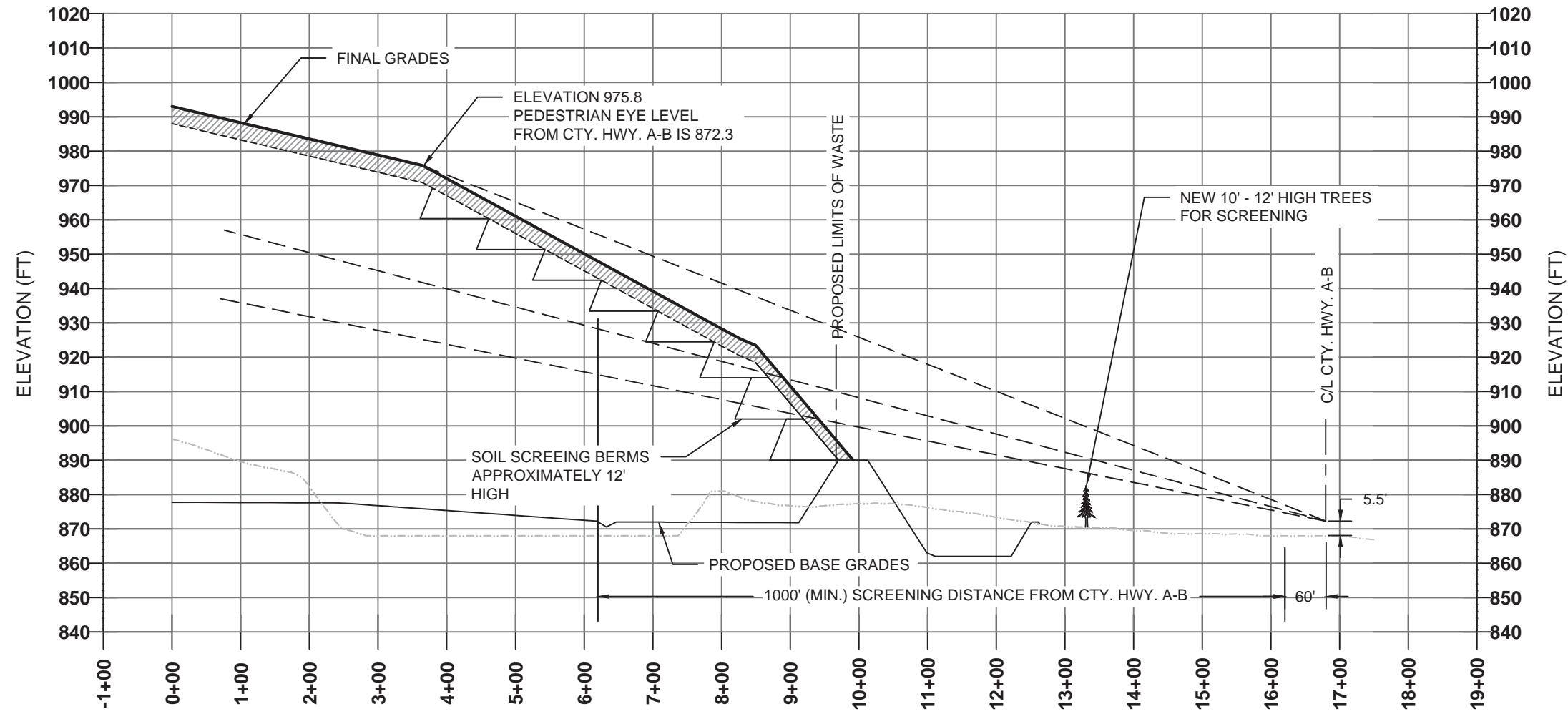


3.				
2.				
1.				
NO.	BY	DATE	REVISION	APPD.
PROJECT: DANE COUNTY NO. 2 (RODEFELD) LANDFILL PROPOSED EASTERN EXPANSION DANE COUNTY, WISCONSIN				
SHEET TITLE: LINE-OF-SIGHT AND SCREENING BERM FOR VIEW FROM COUNTY HIGHWAY AB				
DRAWN BY:	RNOLDEN	SCALE:	AS SHOWN	PROJ. NO. 194528.0004.000001
CHECKED BY:	DM	DATE PRINTED:		FILE NO. 194528.0004.04.dwg
APPROVED BY:	JCO			FIGURE 4
DATE:	FEBRUARY 2014			

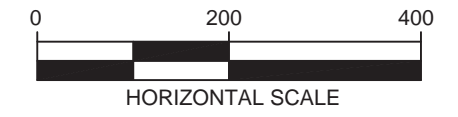
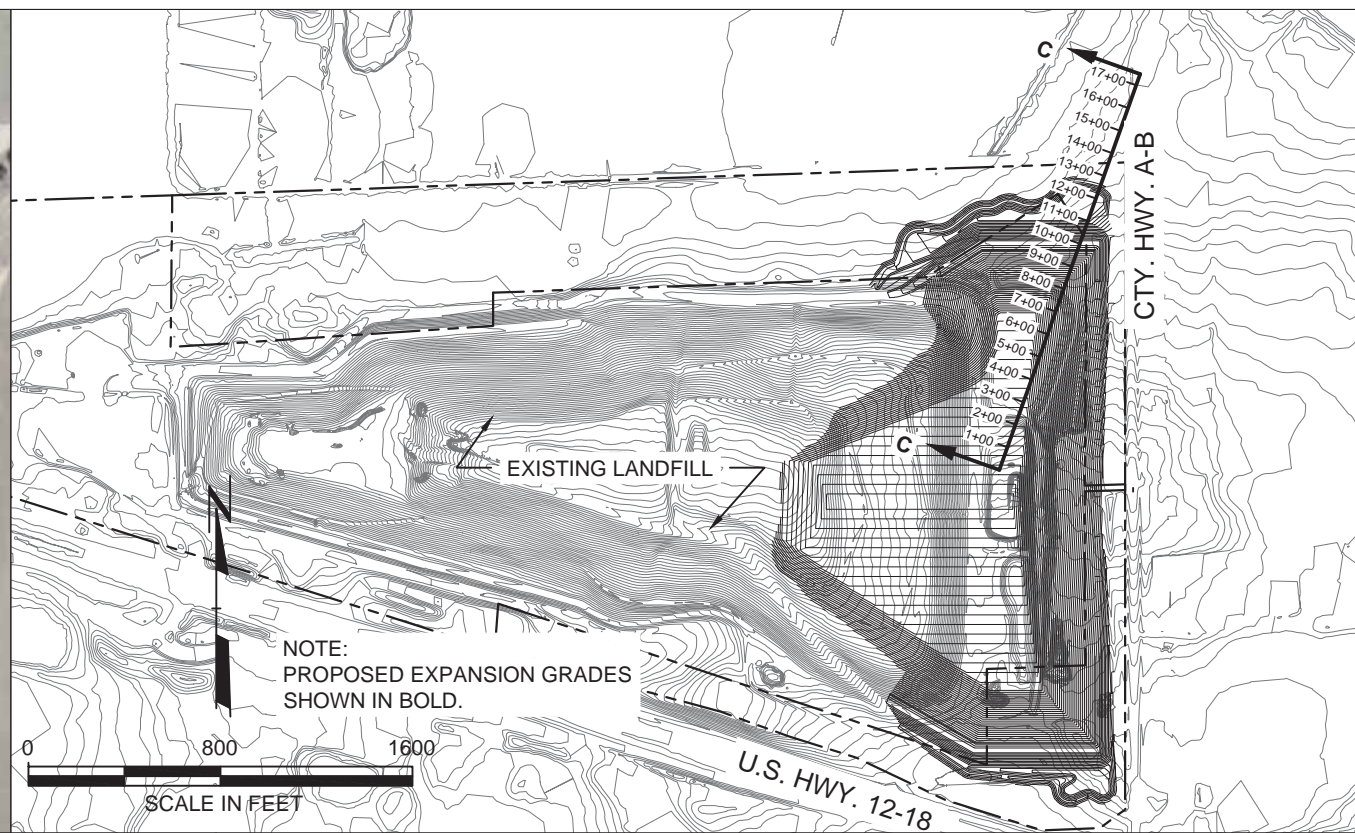
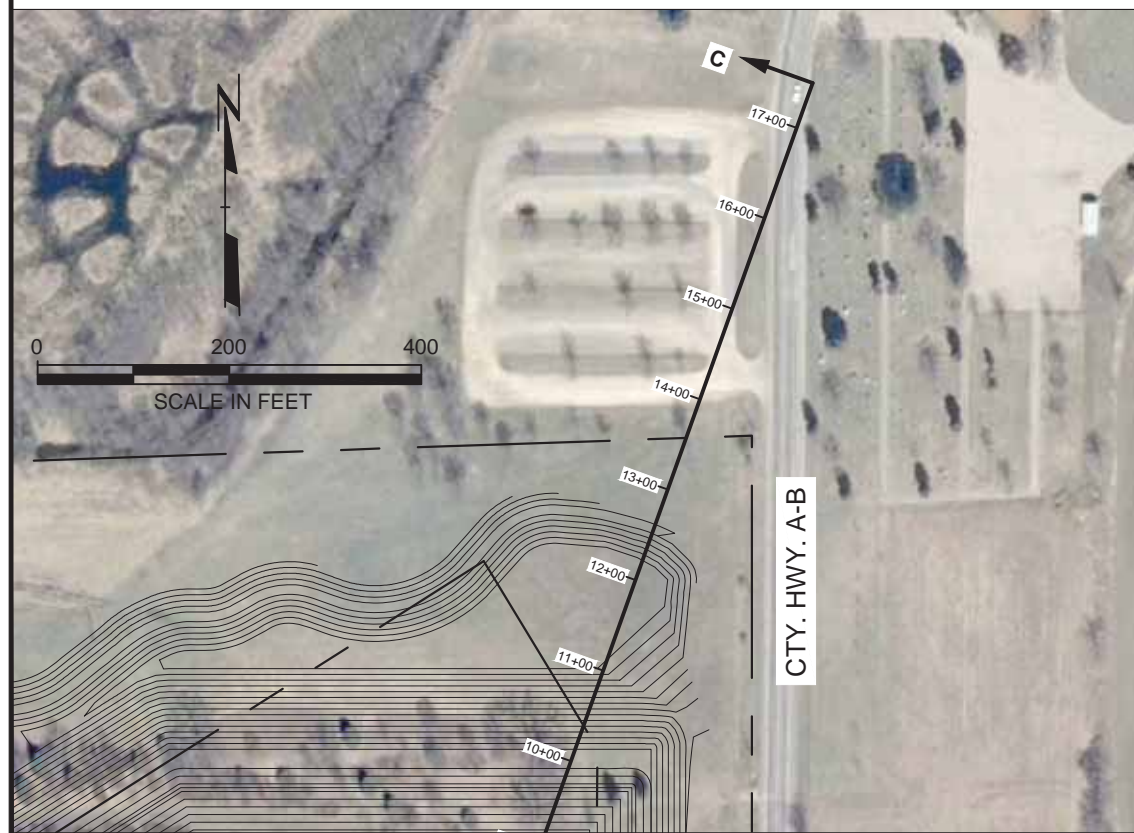
TRC 708 Heartland Trail
Suite 3000
Madison, WI 53717
Phone: 608.826.3600

LEGEND

-  FINAL COVER
-  BASE GRADES
-  EXISTING GROUND
-  LINE OF SIGHT



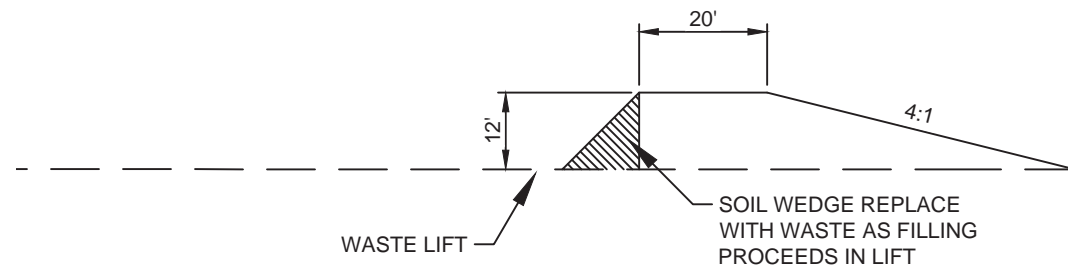
PROFILE C



3.				
2.				
1.				
NO.	BY	DATE	REVISION	APPD.
PROJECT: DANE COUNTY NO. 2 (RODEFELD) LANDFILL PROPOSED EASTERN EXPANSION DANE COUNTY, WISCONSIN				
SHEET TITLE: LINE-OF-SIGHT AND SCREENING BERM FOR VIEW FROM PUBLIC PARK NORTH OF THE EXPANSION				
DRAWN BY:	RNOLDEN	SCALE:	AS SHOWN	PROJ. NO. 194528.0004.000001
CHECKED BY:	DM	DATE PRINTED:		FILE NO. 194528.0004.05.dwg
APPROVED BY:	JCO			FIGURE 5
DATE:	FEBRUARY 2014			

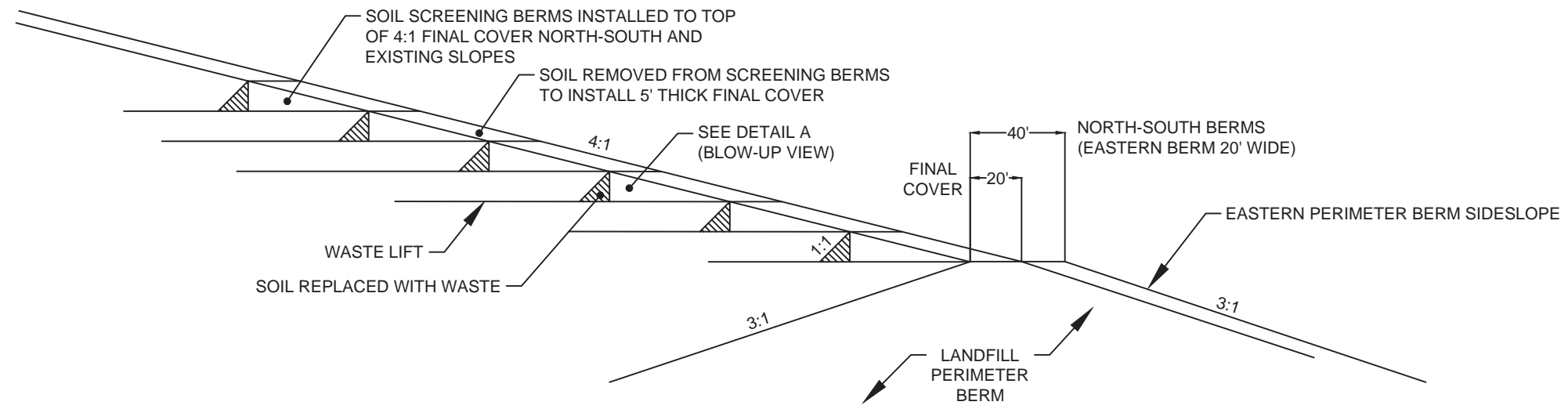
TRC

708 Heartland Trail
Suite 3000
Madison, WI 53717
Phone: 608.826.3600



DETAIL A

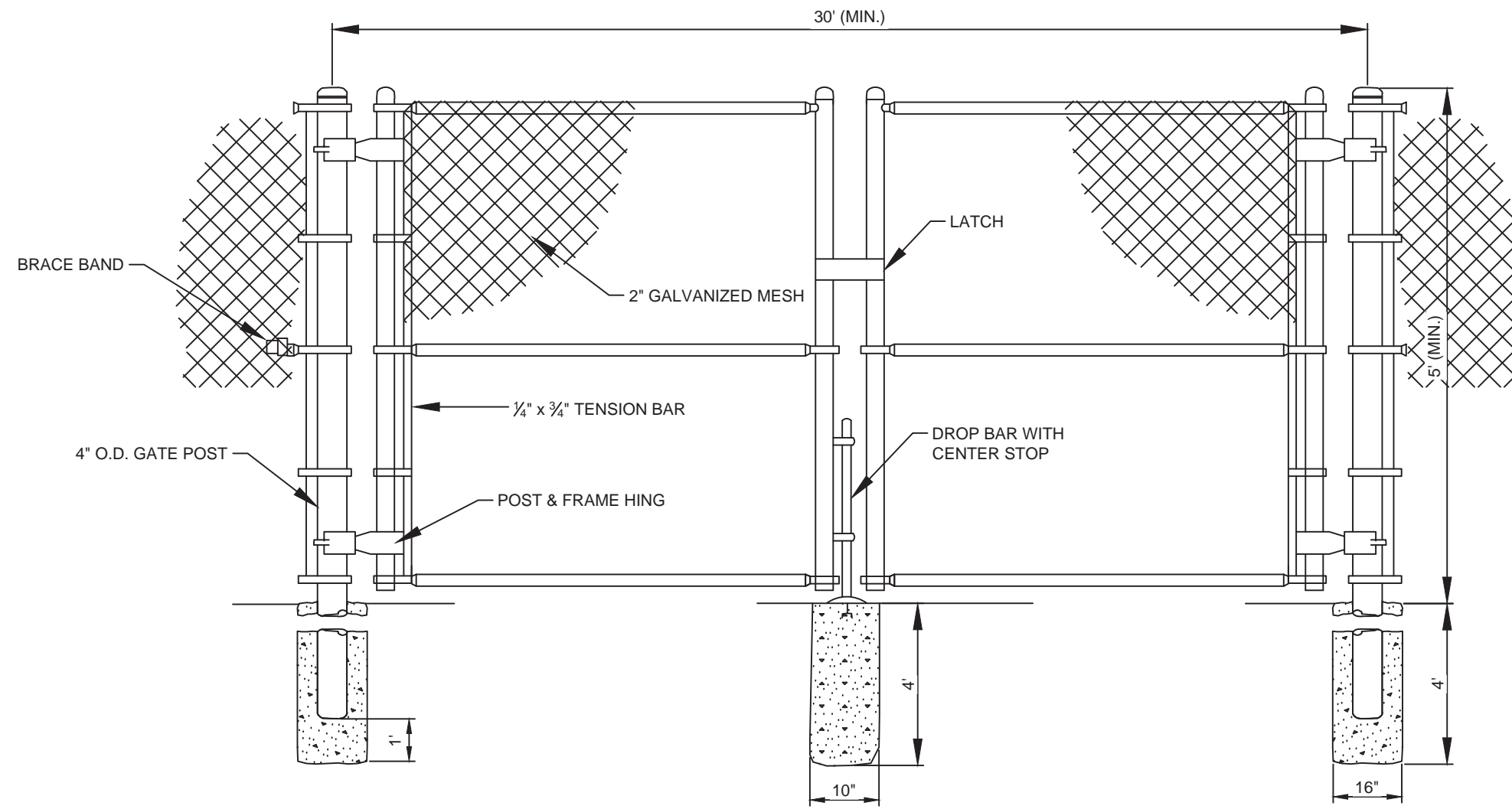
1" = 30'



SCREENING BERMS IN WASTE

SCALE: 1" = 60'

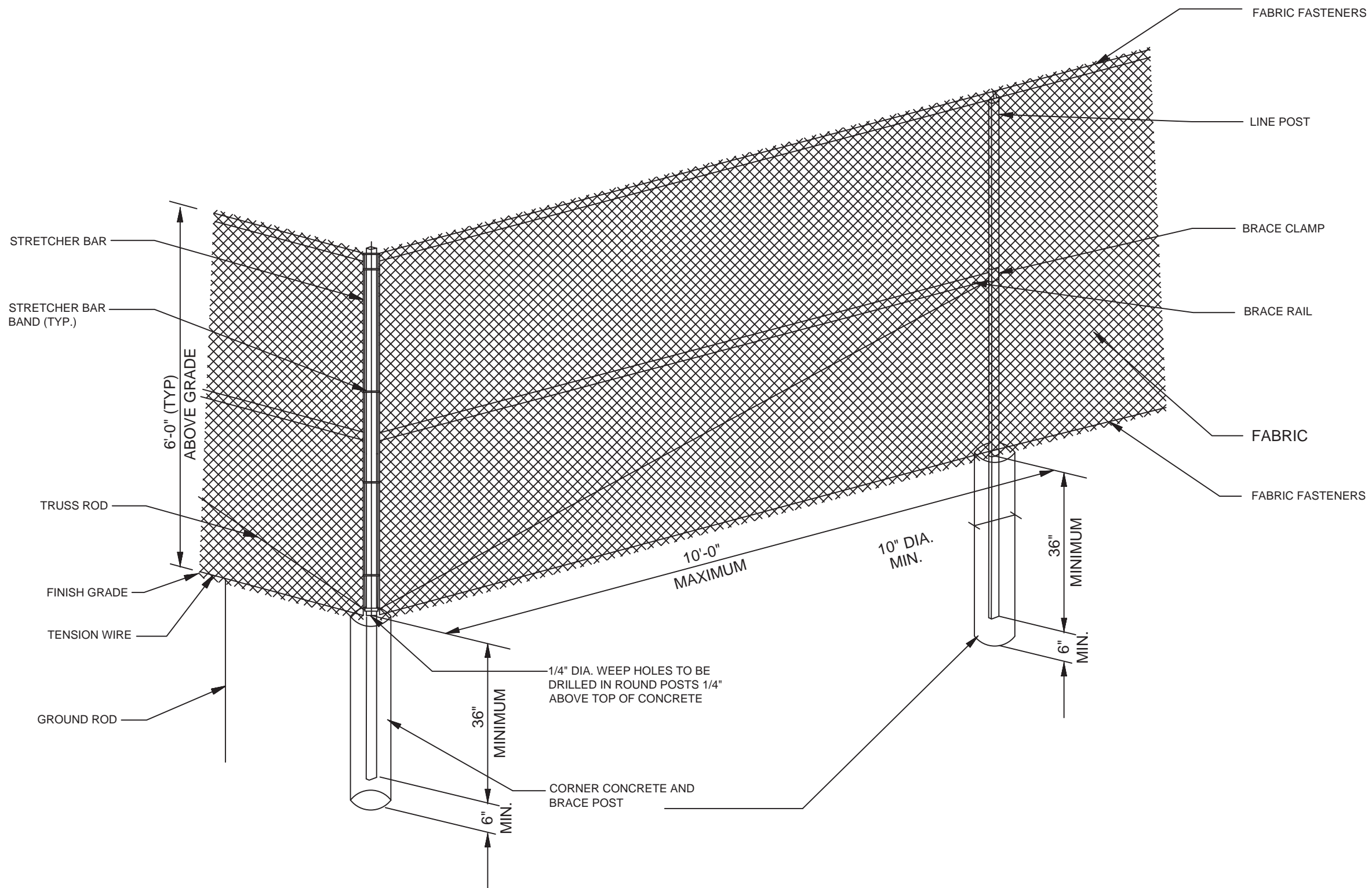
3.					
2.					
1.					
NO.	BY	DATE	REVISION	APPD.	
PROJECT: DANE COUNTY NO. 2 (RODEFELD) LANDFILL PROPOSED EASTERN EXPANSION DANE COUNTY, WISCONSIN					
SHEET TITLE: SCREENING BERMS IN WASTE					
DRAWN BY: RNOLDEN		SCALE:		PROJ. NO. 194528.0004.000001	
CHECKED BY: DM		SCALE:		FILE NO. 194528.0004.06.dwg	
APPROVED BY: JCO		DATE PRINTED:		FIGURE 6	
DATE: FEBRUARY 2014					
			708 Heartland Trail Suite 3000 Madison, WI 53717 Phone: 608.826.3600		



DOUBLE ACCESS GATE

(NOT TO SCALE)

3.					
2.					
1.					
NO.	BY	DATE	REVISION	APPD.	
PROJECT: DANE COUNTY NO. 2 (RODEFELD) LANDFILL PROPOSED EASTERN EXPANSION DANE COUNTY, WISCONSIN					
SHEET TITLE: DOUBLE ACCESS GATE					
DRAWN BY: RNOLDEN		SCALE:		PROJ. NO. 194528.0004.000001	
CHECKED BY: DM		SCALE:		FILE NO. 194528.0004.06.dwg	
APPROVED BY: JCO		DATE PRINTED:		FIGURE 7	
DATE: FEBRUARY 2014					
			708 Heartland Trail Suite 3000 Madison, WI 53717 Phone: 608.826.3600		



SECURITY FENCE (TYP.)

(NOT TO SCALE)

3.					
2.					
1.					
NO.	BY	DATE	REVISION	APPD.	
PROJECT: DANE COUNTY NO. 2 (RODEFELD) LANDFILL PROPOSED EASTERN EXPANSION DANE COUNTY, WISCONSIN					
SHEET TITLE: SECURITY FENCE					
DRAWN BY:	RNOLDEN	SCALE:		PROJ. NO.:	194528.0004.000001
CHECKED BY:	DM	SCALE:		FILE NO.:	194528.0004.06.dwg
APPROVED BY:	JCO	DATE PRINTED:		FIGURE 8	
DATE:	FEBRUARY 2014				



708 Heartland Trail
 Suite 3000
 Madison, WI 53717
 Phone: 608.826.3600