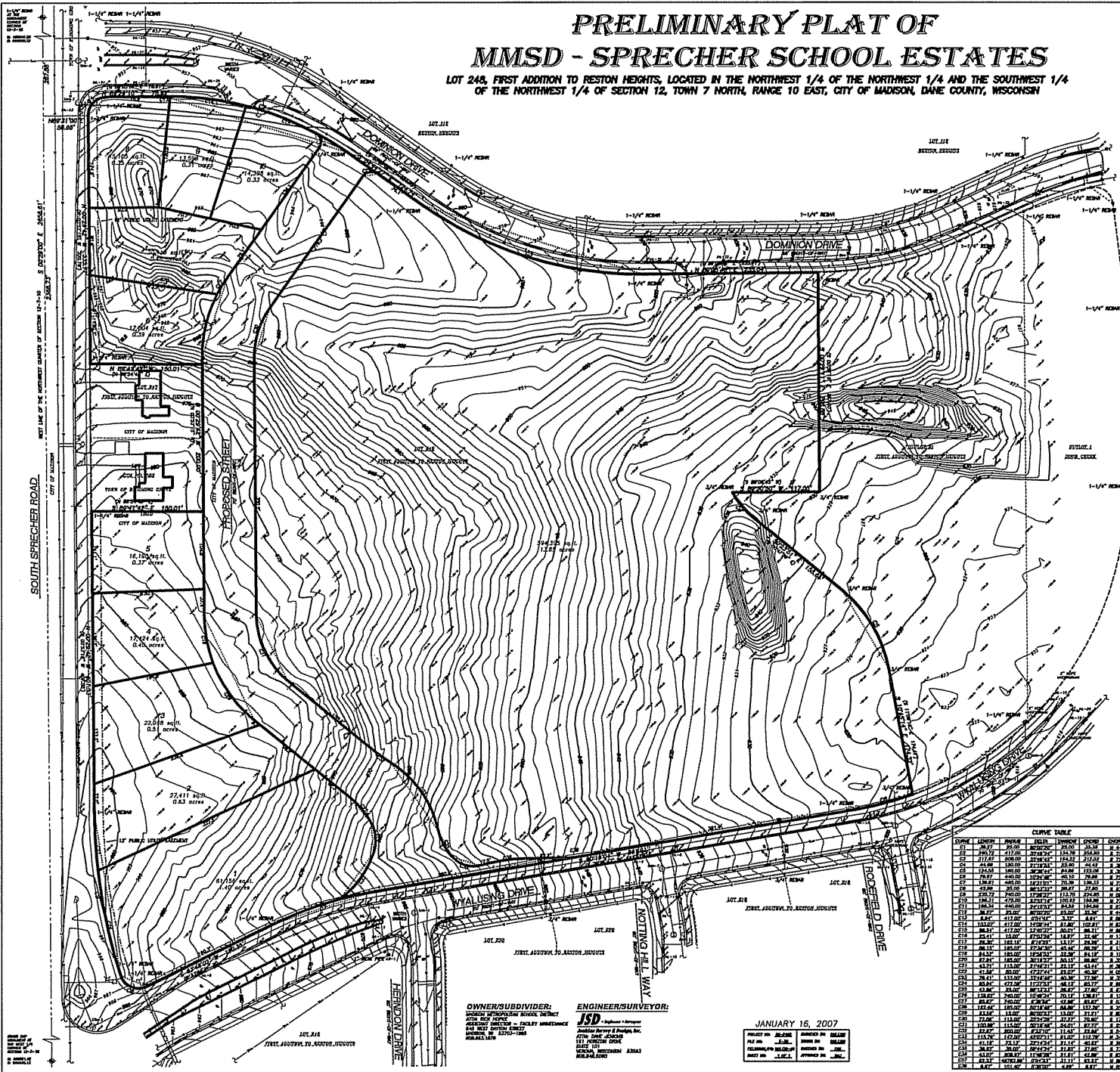


# PRELIMINARY PLAT OF MMSD - SPRECHER SCHOOL ESTATES

LOT 248, FIRST ADDITION TO RESTON HEIGHTS, LOCATED IN THE NORTHWEST 1/4 OF THE NORTHWEST 1/4 AND THE SOUTHWEST 1/4 OF THE NORTHWEST 1/4 OF SECTION 12, TOWN 7 NORTH, RANGE 10 EAST, CITY OF MADISON, DANE COUNTY, WISCONSIN



- LEGEND**
- PROPERTY CORNER POINT, TYPE NOTED
  - NEW BENCH SET, TYPE AS NOTED
  - CONTROL POINT
  - SON
  - WIDER OR SHIP WALK
  - FINE HOUSING
  - SHOWER SEWER MANHOLE
  - STORM SEWER MANHOLE
  - STORM SEWER PILE
  - LIGHT POLE
  - UTILITY PREDICTED
  - SWAY ELONGATION
  - PROPERTY LINE
  - PLATTED LINE
  - SECTION LINE
  - EASEMENT LINE
  - POINT OF MEET
  - WIDER LINE
  - SANITARY SEWER
  - STORM SEWER
  - UNDERGROUND ELECTRICAL POWER
  - UNDERGROUND TELEPHONE
  - UNDERGROUND CABLE
  - GAS MAIN
  - FENCE
  - CONCRETE CURB & GUTTER
  - PAVEMENT EDGE
  - INDEX CONTOUR
  - 1'-10" ANTI-CORROSION CONTOUR

- NOTES**
1. RECORDS FOR THIS SURVEY AND MAP ARE REFERENCED TO THE WISCONSIN COUNTY EROSION CONTROL DISTRICT, NORTH MADISON DISTRICT, DISTRICT NO. 10, THE WEST LINE OF THE NW 1/4 OF SECTION 12, T7N, R10E, W24.5N & DISTRICT NO. 11.
  2. ELEVATIONS FOR THIS SURVEY AND MAP ARE BASED ON THE BEST SECTION CORNER OF SECTION 12, T7N, R10E, W24.5N AS ELEVATION OF 662.50'. THE SECTION CORNER FOR THIS ELEVATION IS THE NORTH-WEST CORNER OF THE NW 1/4 OF SECTION 12.
  3. CONTOUR INTERVAL IS ONE FOOT.
  4. TOPOGRAPHY AND GROUND SURVEY FORWARDED BY GEORGE SURVEY & DESIGN, INC. ON NOVEMBER 15, 14, 20, & 21, 2006.
  5. SUBSURFACE UTILITIES AND ELEVATIONS SHOWN ON THIS MAP HAVE BEEN APPROXIMATED BY LOCATING ALTERNATE LOCATIONS AND APPROPRIATE LOCATIONS LOCATING HOTLINE FIELD INSTRUMENTS AND BY REFERENCE TO UTILITY RECORDS AND MAPS.
  6. BEFORE CONSTRUCTION APPROPRIATE UTILITY COMPANIES SHOULD BE CONTACTED FOR EXACT LOCATION OF UNDERGROUND UTILITIES, RECORDS, RECORDS, AT 1.800.443.8111.
  7. THE USE OF THE ORIGINAL POINTS SHOWN ON THIS MAP SHALL BE LIMITED TO THE POINTS SHOWN. OTHER POINTS AND RECORDS NOT SHOWN ON THIS MAP SHALL BE VOID.
  8. THIS PARCEL IS SUBJECT TO ALL EASEMENTS AND AGREEMENTS, BOTH RECORDED AND UNRECORDED.
  9. THIS PARCEL IS SUBJECT TO THE RESTRICTIONS, EASEMENTS, AND CONDITIONS AS CONTAINED IN THE FIRST ADDITION TO RESTON HEIGHTS PLAT, DANE COUNTY, WISCONSIN.

**LEGAL DESCRIPTION**  
LOT 248 FIRST ADDITION TO RESTON HEIGHTS, RECORDED IN VOLUME 57-1778 PLATS ON PAGES 720-721 AS DOCUMENT # 2104114, CITY OF MADISON, DANE COUNTY, WISCONSIN.

**STORM SEWER MANHOLES**

MANHOLE ID	MAN ELEVATION	INVERT	ELEVATION	SIZE	TYPE
SM-1	662.50	662.50	18"	18"	PCP
SM-2	662.50	662.50	18"	18"	PCP

**SANITARY SEWER MANHOLES**

MANHOLE ID	MAN ELEVATION	INVERT	ELEVATION	SIZE	TYPE
SM-1	662.50	662.50	18"	18"	PCP
SM-2	662.50	662.50	18"	18"	PCP

**STORM SEWER INLETS**

INLET ID	MAN ELEVATION	INVERT	ELEVATION	SIZE	TYPE
SI-1	662.50	662.50	18"	18"	PCP
SI-2	662.50	662.50	18"	18"	PCP

**STORM SEWER PIPES**

PIPE ID	MAN ELEVATION	INVERT	ELEVATION	SIZE	TYPE
SP-1	662.50	662.50	18"	18"	PCP
SP-2	662.50	662.50	18"	18"	PCP

**OWNERS/SUBDIVIDER:**  
MMSD - SPRECHER SCHOOL ESTATES  
CITY OF MADISON, WISCONSIN

**ENGINEER/SURVEYOR:**  
JSD  
JAMES S. DUNN, INC.  
111 NORTH MONROE STREET  
MADISON, WISCONSIN 53703-1000

DATE: JANUARY 16, 2007