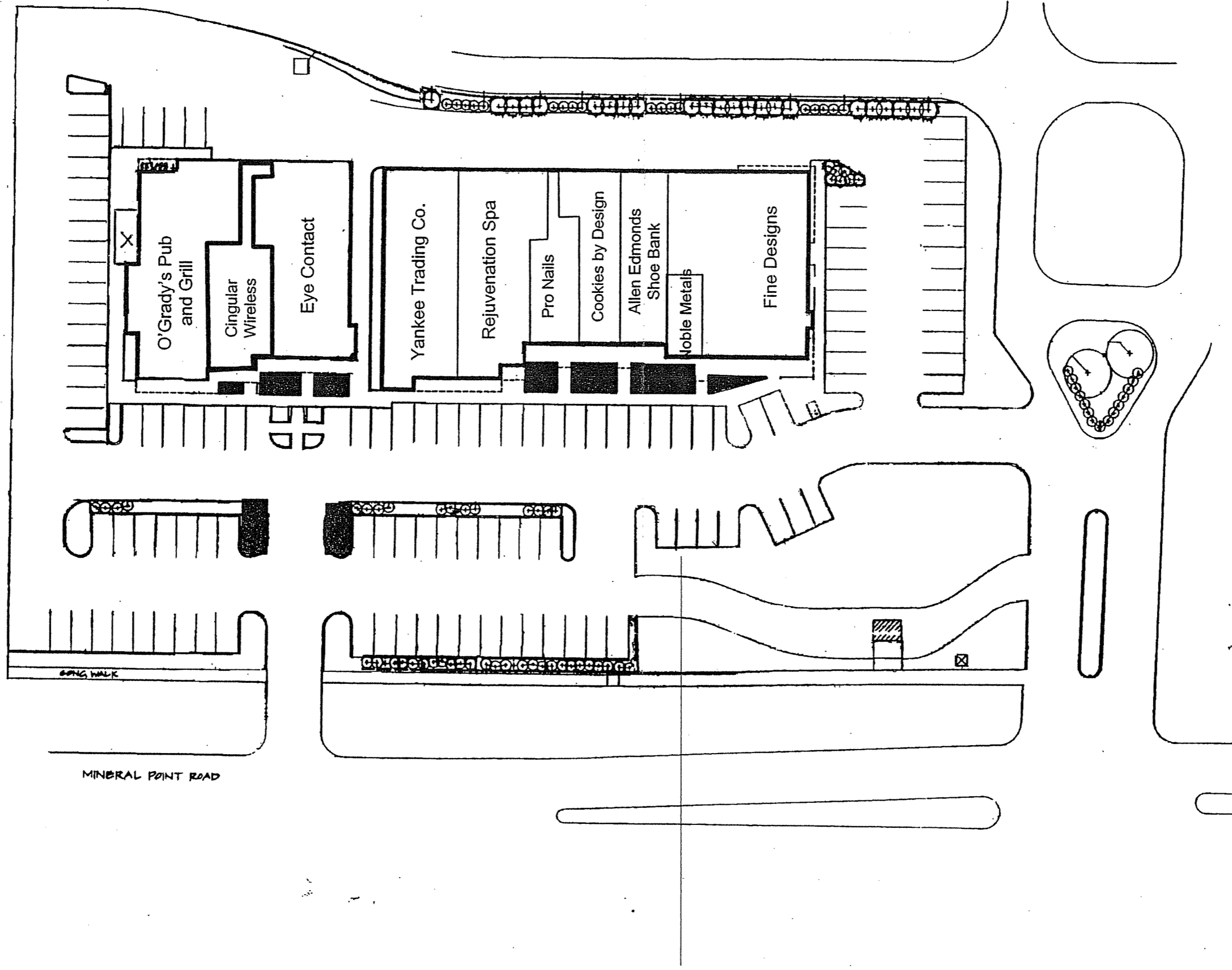
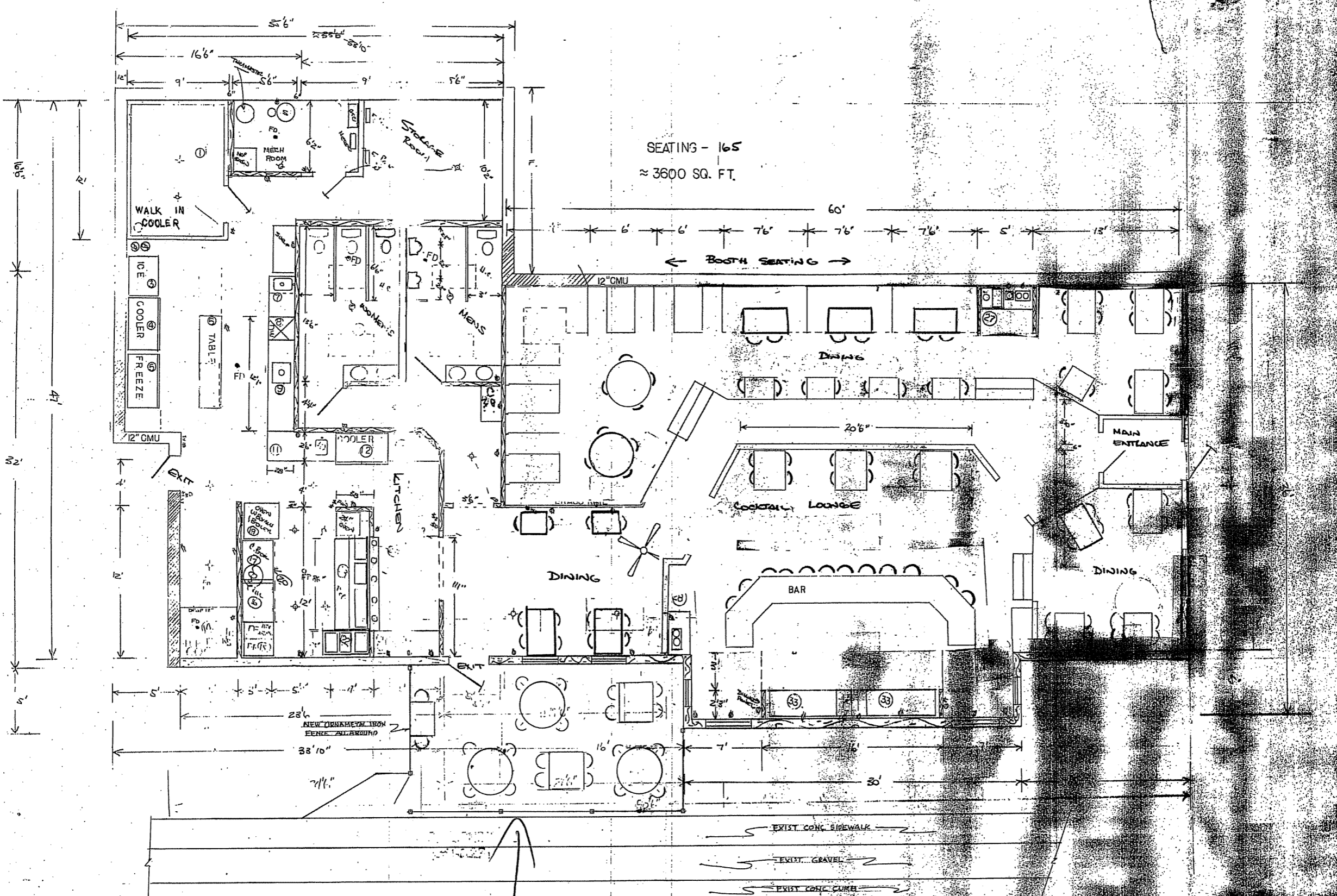


Cambridge Court

7404-7436 Mineral Point Road

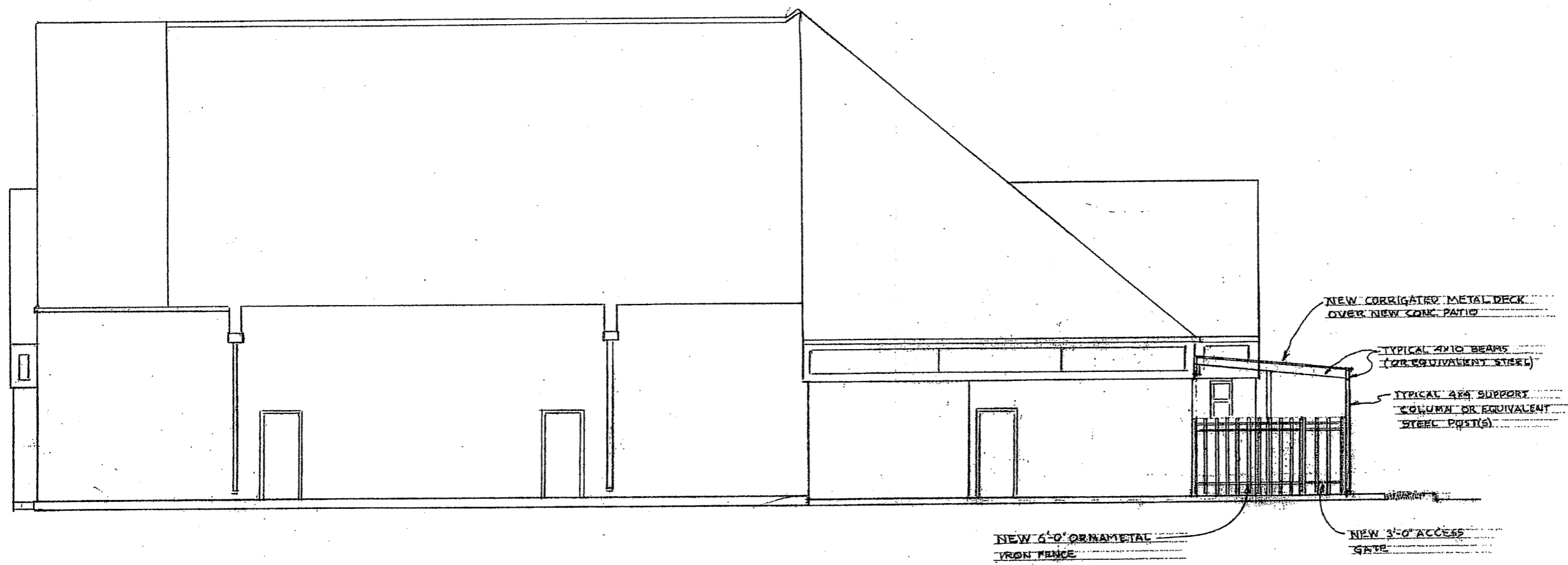
Madison, Wisconsin





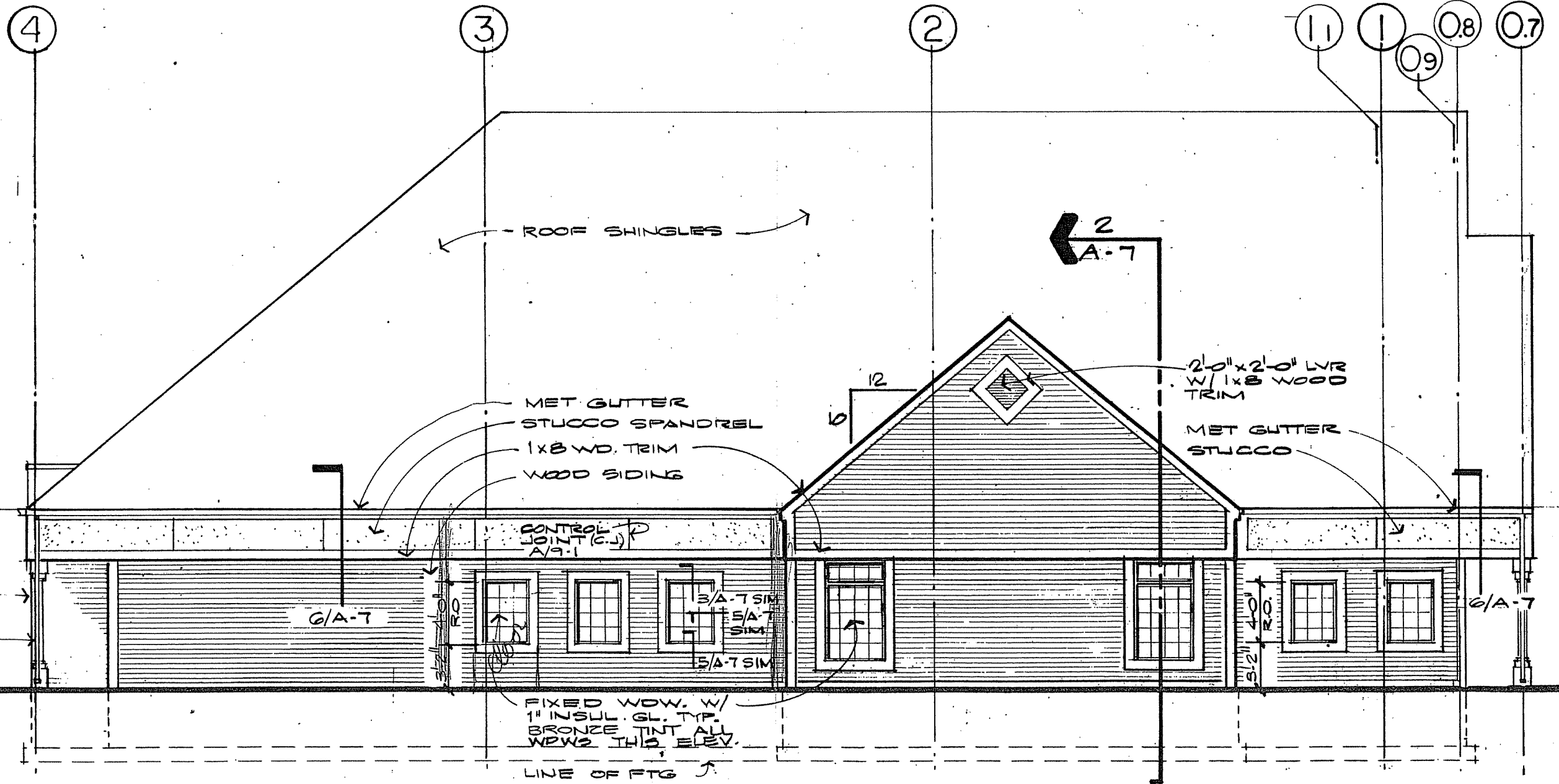
SEATING - 165
≈ 3600 SQ. FT.

PROJECT NO.	DATE
CLIENT	ARCHITECT
SCALE	DATE
BY	PROJECT



NORTH ELEVATION
 1/8" = 1'-0"

NEW OUTSIDE SERVICE AREA FOR MARTIN O'SHEA'S IRISH PUB 7415 HUNTER PARK MADISON, WI		
associated engineers inc. Madison, Wisconsin		



3 WEST ELEVATION
 1/8" = 1'-0"

CAMBRIDGE COURT WEST