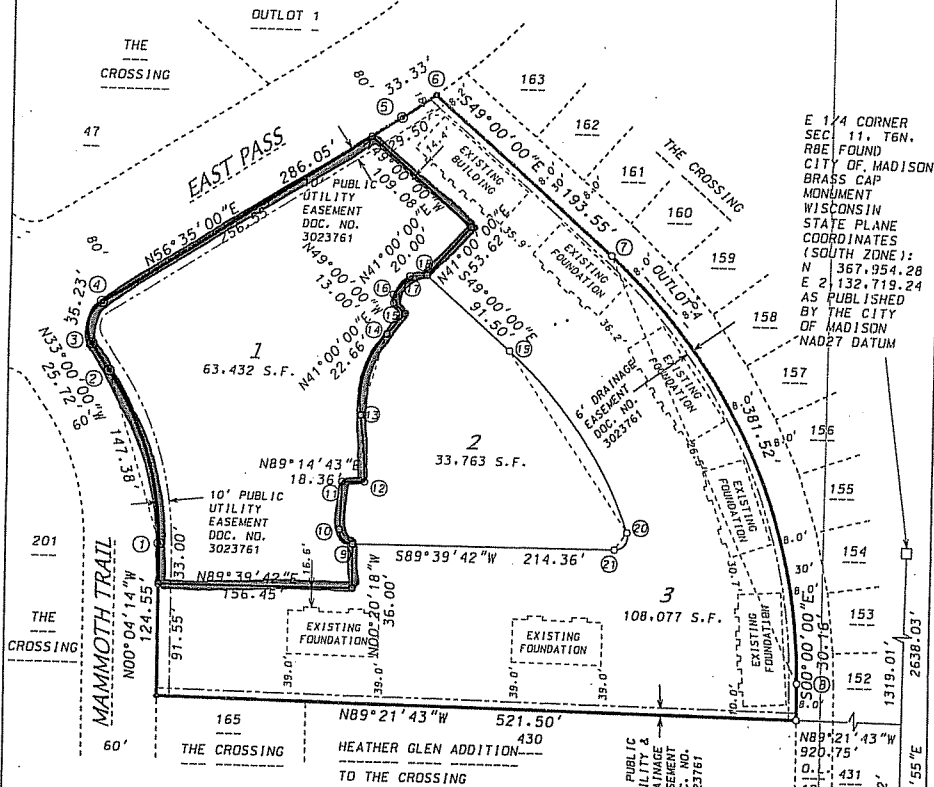


# CERTIFIED SURVEY MAP

LOT 164, THE CROSSING  
 LOCATED IN THE NE1/4 AND NW1/4 OF THE SE1/4 OF SECTION 11, T6N, R8E,  
 CITY OF MADISON, DANE COUNTY, WISCONSIN

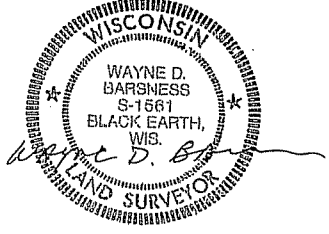
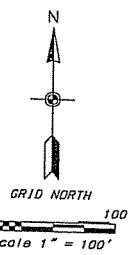
## LEGEND

- ⊙ FOUND 1-1/4" SOLID ROUND IRON STAKE
- FOUND 3/4" IRON STAKE
- PLACED 3/4"x 24" SOLID ROUND IRON STAKE WEIGHING 1.50 LBS/FT.
- UTILITY EASEMENTS AS HEREIN SET FORTH ARE FOR THE USE OF PUBLIC BODIES AND PRIVATE PUBLIC UTILITIES HAVING THE RIGHT TO SERVE THE AREA.



E 1/4 CORNER SEC. 11, T6N, R8E FOUND CITY OF MADISON BRASS CAP MONUMENT WISCONSIN STATE PLANE COORDINATES (SOUTH ZONE):  
 N 367,954.28  
 W 2132,719.24  
 E 2132,719.24  
 AS PUBLISHED BY THE CITY OF MADISON NAD27 DATUM

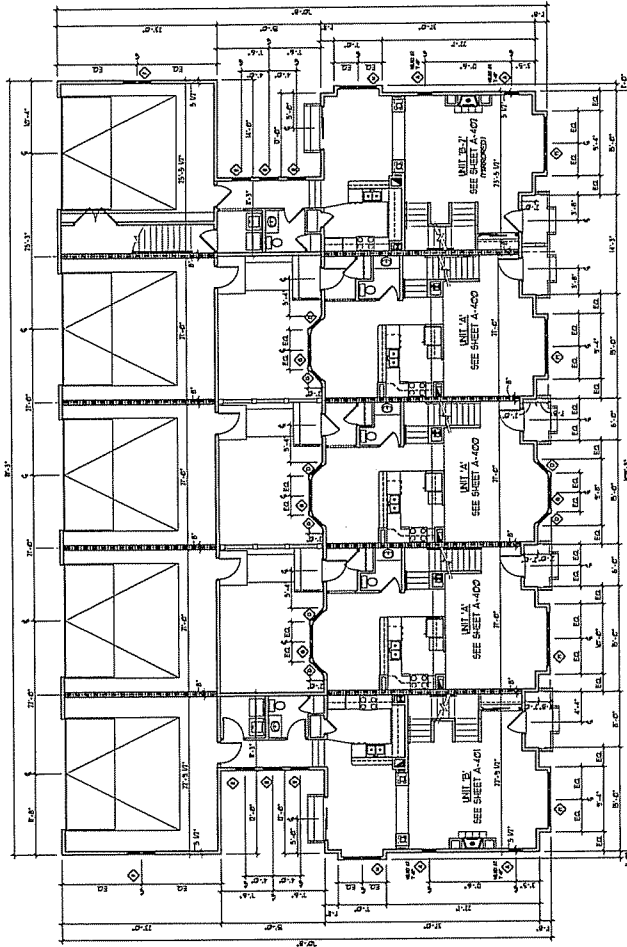
SE CORNER SEC. 11, T6N, R8E FOUND CITY OF MADISON BRASS CAP MONUMENT



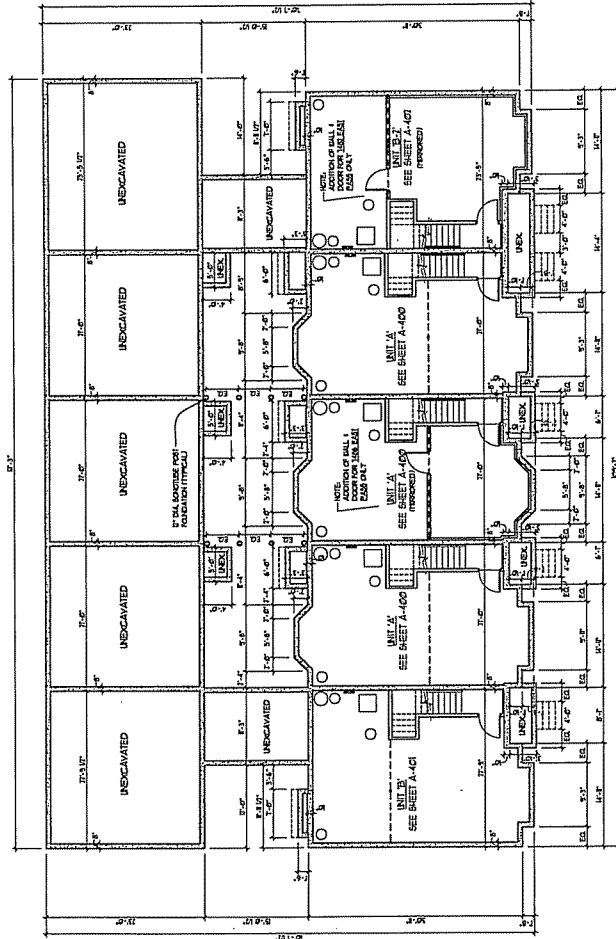
**D'ONOFRIO, KOTTKE AND ASSOCIATES, INC.**  
 7630 WESTWARD WAY  
 MADISON, WISCONSIN 53717  
 TEL: 608-833-7630  
 FAX: 608-833-1089

DATE: MARCH 7, 2005  
 REV.: MAY 26, 2005  
 F.N.: 05-07-104  
 C.S.M. NO. 11410  
 DOC. NO. 4064297  
 VDL. 69 SHEET 200

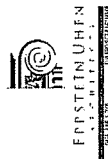




2 ROWHOUSE - FIRST FLOOR  
18'0" x 112'0"

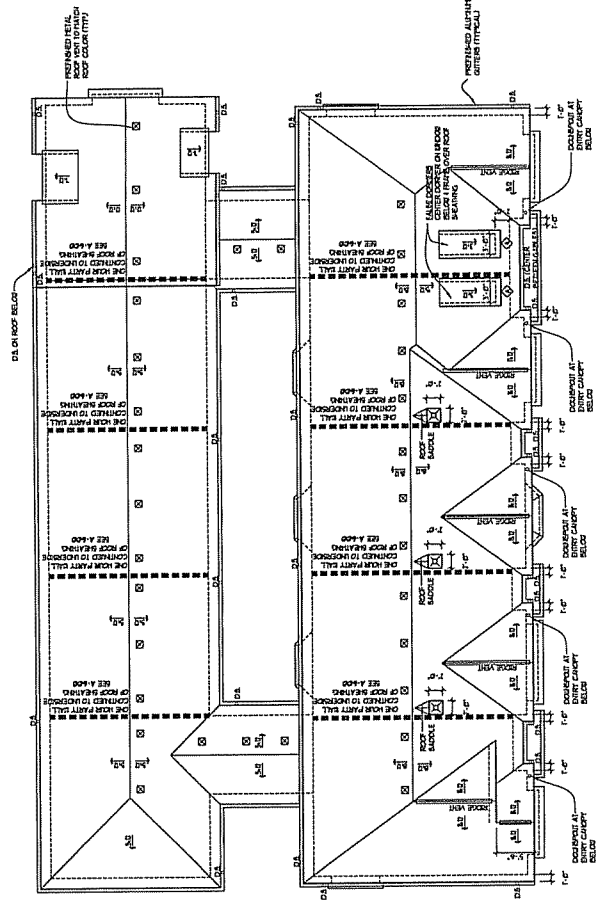


1 ROWHOUSE - BASEMENT  
18'0" x 112'0"

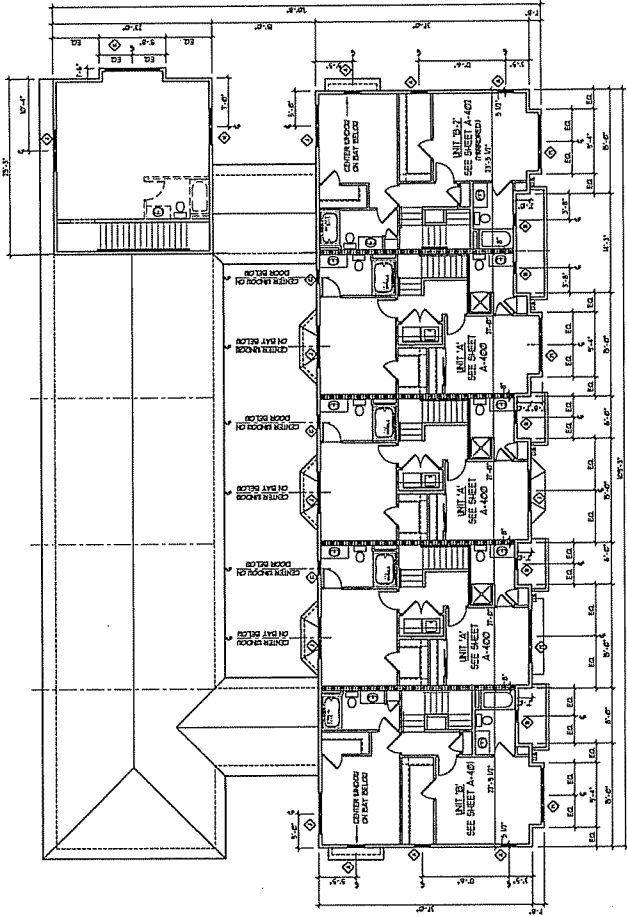


LOT 164 SIP AMENDMENT

FPF STEIN UHLEN  
ARCHITECTS  
1000 15TH AVENUE  
DENVER, CO 80202  
TEL: 303.733.1111  
WWW.FPFSTEINUHLEN.COM

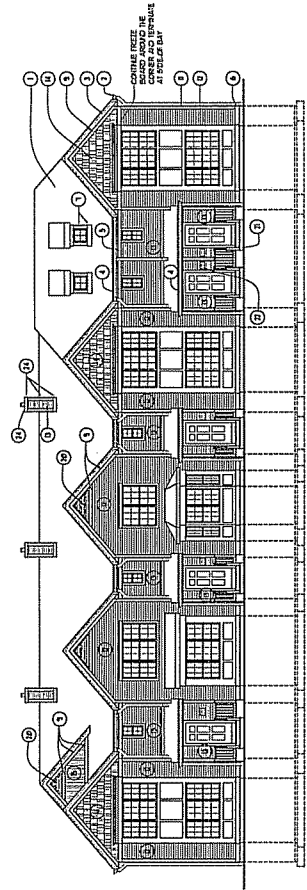


2 ROWHOUSE - ROOF PLAN  
REV 10/17/12

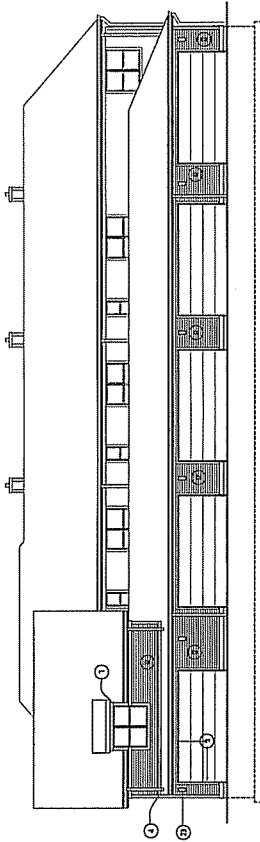


1 ROWHOUSE - SECOND FLOOR PLAN  
REV 10/17/12

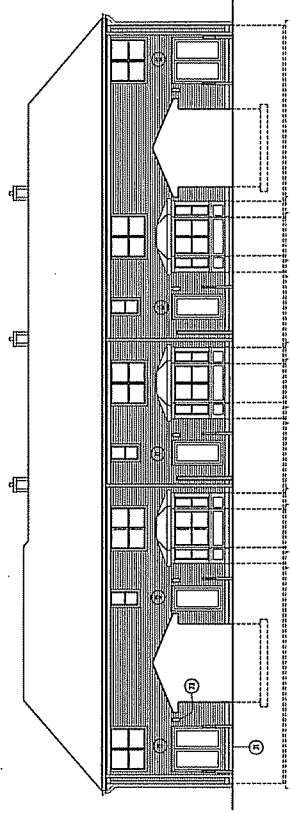
LOT 164 SIP AMENDMENT



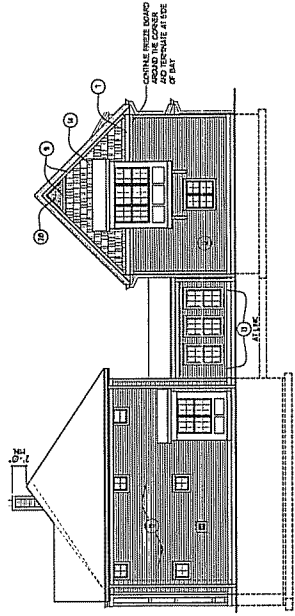
1 ROWHOUSE - FRONT ELEVATION  
18'-0" x 12'



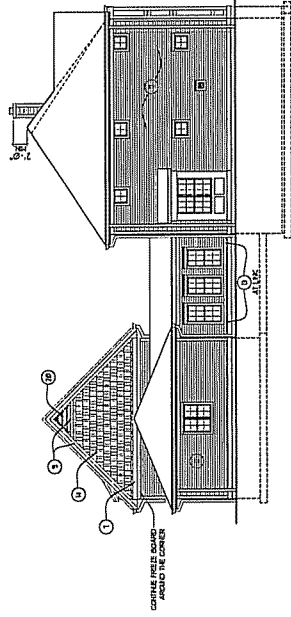
2 ROWHOUSE - GARAGE ELEVATION  
18'-0" x 12'



3 ROWHOUSE - BACK ELEVATION  
18'-0" x 12'



4 ROWHOUSE - SIDE ELEVATION  
18'-0" x 12'



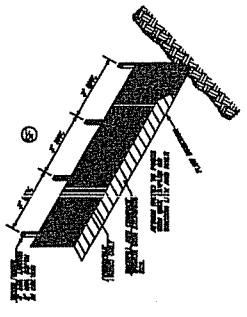
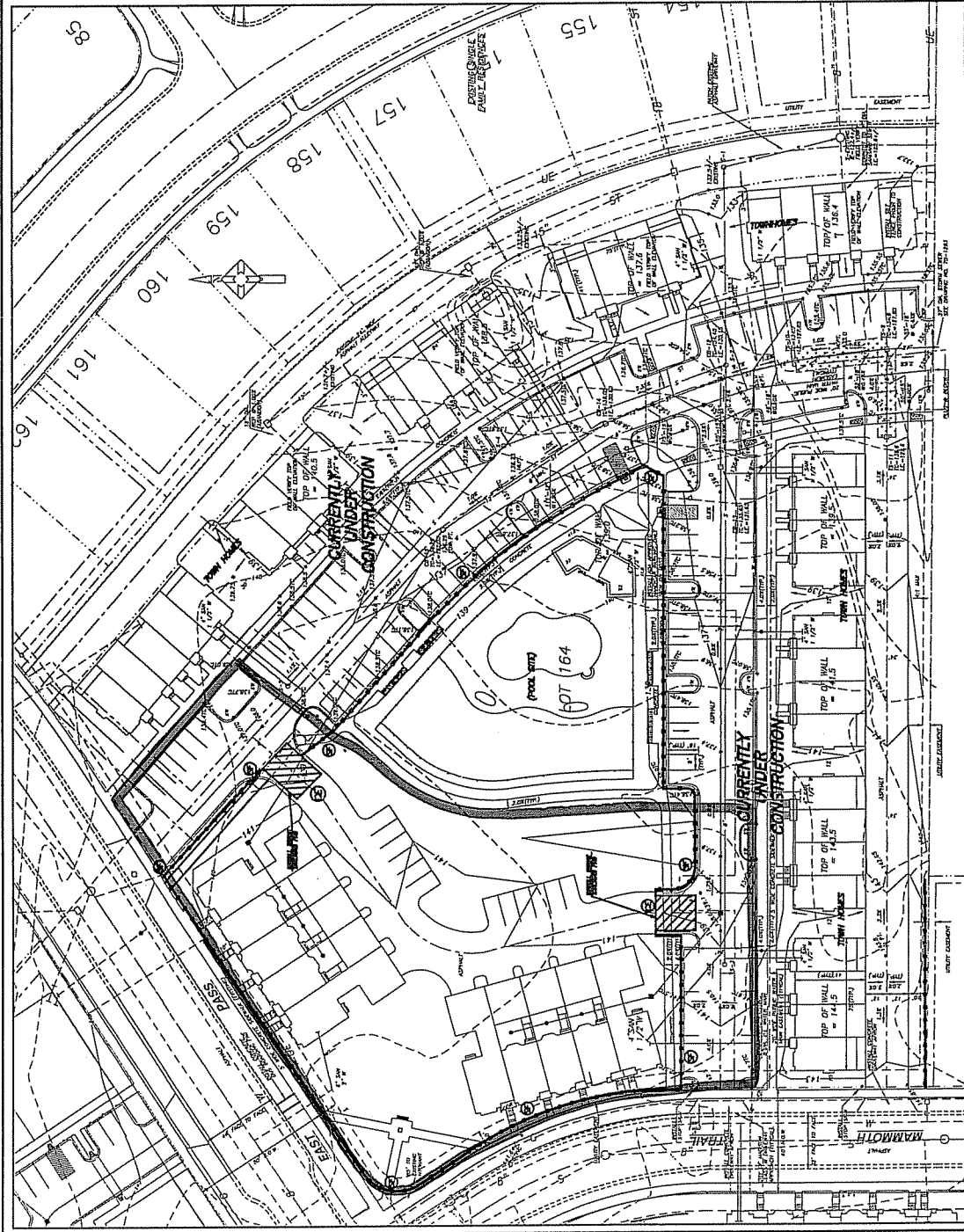
5 ROWHOUSE - SIDE ELEVATION  
18'-0" x 12'

**ROWHOUSE MATERIAL KEY**

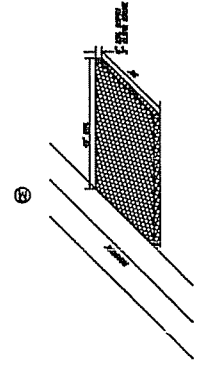
1	EXTERIOR FINISHES AS SHOWN	2	RESIDUAL ALUMINUM SHIMMED TRIM BOARD	3	EXTERIOR WALLS SEE PLAN FOR FINISHES	4	8" INSULATED ALUMINUM SHIMMED TRIM BOARD FROM STUDS OR JOISTS
5	ALUMINUM CORNERS / CORNERPOSTS	6	1/2" VINYL TRIM	7	EXTERIOR WALLS SEE PLAN FOR FINISHES	8	1/2" VINYL TRIM
9	EXTERIOR WALLS SEE PLAN FOR FINISHES	10	1/2" VINYL TRIM	11	EXTERIOR WALLS SEE PLAN FOR FINISHES	12	1/2" VINYL TRIM
13	EXTERIOR WALLS SEE PLAN FOR FINISHES	14	1/2" VINYL TRIM	15	EXTERIOR WALLS SEE PLAN FOR FINISHES	16	1/2" VINYL TRIM
17	EXTERIOR WALLS SEE PLAN FOR FINISHES	18	1/2" VINYL TRIM	19	EXTERIOR WALLS SEE PLAN FOR FINISHES	20	1/2" VINYL TRIM
21	EXTERIOR WALLS SEE PLAN FOR FINISHES	22	1/2" VINYL TRIM	23	EXTERIOR WALLS SEE PLAN FOR FINISHES	24	1/2" VINYL TRIM
25	EXTERIOR WALLS SEE PLAN FOR FINISHES	26	1/2" VINYL TRIM	27	EXTERIOR WALLS SEE PLAN FOR FINISHES	28	1/2" VINYL TRIM
29	EXTERIOR WALLS SEE PLAN FOR FINISHES	30	1/2" VINYL TRIM	31	EXTERIOR WALLS SEE PLAN FOR FINISHES	32	1/2" VINYL TRIM
33	EXTERIOR WALLS SEE PLAN FOR FINISHES	34	1/2" VINYL TRIM	35	EXTERIOR WALLS SEE PLAN FOR FINISHES	36	1/2" VINYL TRIM
37	EXTERIOR WALLS SEE PLAN FOR FINISHES	38	1/2" VINYL TRIM	39	EXTERIOR WALLS SEE PLAN FOR FINISHES	40	1/2" VINYL TRIM
41	EXTERIOR WALLS SEE PLAN FOR FINISHES	42	1/2" VINYL TRIM	43	EXTERIOR WALLS SEE PLAN FOR FINISHES	44	1/2" VINYL TRIM
45	EXTERIOR WALLS SEE PLAN FOR FINISHES	46	1/2" VINYL TRIM	47	EXTERIOR WALLS SEE PLAN FOR FINISHES	48	1/2" VINYL TRIM
49	EXTERIOR WALLS SEE PLAN FOR FINISHES	50	1/2" VINYL TRIM	51	EXTERIOR WALLS SEE PLAN FOR FINISHES	52	1/2" VINYL TRIM
53	EXTERIOR WALLS SEE PLAN FOR FINISHES	54	1/2" VINYL TRIM	55	EXTERIOR WALLS SEE PLAN FOR FINISHES	56	1/2" VINYL TRIM
57	EXTERIOR WALLS SEE PLAN FOR FINISHES	58	1/2" VINYL TRIM	59	EXTERIOR WALLS SEE PLAN FOR FINISHES	60	1/2" VINYL TRIM
61	EXTERIOR WALLS SEE PLAN FOR FINISHES	62	1/2" VINYL TRIM	63	EXTERIOR WALLS SEE PLAN FOR FINISHES	64	1/2" VINYL TRIM
65	EXTERIOR WALLS SEE PLAN FOR FINISHES	66	1/2" VINYL TRIM	67	EXTERIOR WALLS SEE PLAN FOR FINISHES	68	1/2" VINYL TRIM
69	EXTERIOR WALLS SEE PLAN FOR FINISHES	70	1/2" VINYL TRIM	71	EXTERIOR WALLS SEE PLAN FOR FINISHES	72	1/2" VINYL TRIM
73	EXTERIOR WALLS SEE PLAN FOR FINISHES	74	1/2" VINYL TRIM	75	EXTERIOR WALLS SEE PLAN FOR FINISHES	76	1/2" VINYL TRIM
77	EXTERIOR WALLS SEE PLAN FOR FINISHES	78	1/2" VINYL TRIM	79	EXTERIOR WALLS SEE PLAN FOR FINISHES	80	1/2" VINYL TRIM
81	EXTERIOR WALLS SEE PLAN FOR FINISHES	82	1/2" VINYL TRIM	83	EXTERIOR WALLS SEE PLAN FOR FINISHES	84	1/2" VINYL TRIM
85	EXTERIOR WALLS SEE PLAN FOR FINISHES	86	1/2" VINYL TRIM	87	EXTERIOR WALLS SEE PLAN FOR FINISHES	88	1/2" VINYL TRIM
89	EXTERIOR WALLS SEE PLAN FOR FINISHES	90	1/2" VINYL TRIM	91	EXTERIOR WALLS SEE PLAN FOR FINISHES	92	1/2" VINYL TRIM
93	EXTERIOR WALLS SEE PLAN FOR FINISHES	94	1/2" VINYL TRIM	95	EXTERIOR WALLS SEE PLAN FOR FINISHES	96	1/2" VINYL TRIM
97	EXTERIOR WALLS SEE PLAN FOR FINISHES	98	1/2" VINYL TRIM	99	EXTERIOR WALLS SEE PLAN FOR FINISHES	100	1/2" VINYL TRIM

LOT 164 SIP AMENDMENT





SILT FENCE DETAIL  
SEE PLAN



STONE CONSTRUCTION ENTRANCE  
SEE PLAN

**EROSION CONTROL NOTES**

1. The Contractor is responsible for the maintenance of all erosion control measures during and after construction.
2. All construction shall be completed by the date indicated in the notes.
3. All construction shall be completed by the date indicated in the notes.

<b>HELD ENGINEERING ASSOCIATES, INC.</b> MADISON, WISCONSIN <small>(608) 261-7777 FAX (608) 261-9857</small>		<b>VERIDIAN HOMES, L.L.C.</b> 600 SOUTH WISCONSIN DRIVE MADISON, WISCONSIN <small>(608) 784-3100</small>		<b>THE CROSSING PLAT</b> MADISON, WI		SOILS MAP: 1" = 30' DATE: 05/31/20	BENCHMARK: THE MIT OF FIRE APPROPRIATE - SOUTHERLY CORNER OF EAST PASS AND ICE AGE DRIVE ELEVATION: 150.87	SHEET NO. 2 OF 2 DRAWING NO. EROSION CONTROL PLAN
--	--	---	--	---	--	--	---	---

