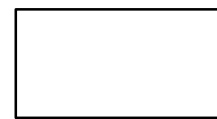
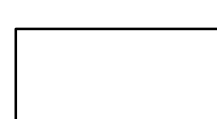
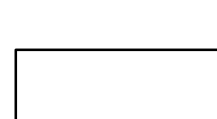
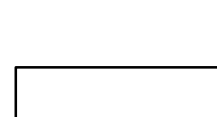
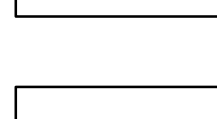
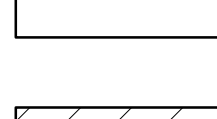


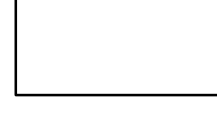

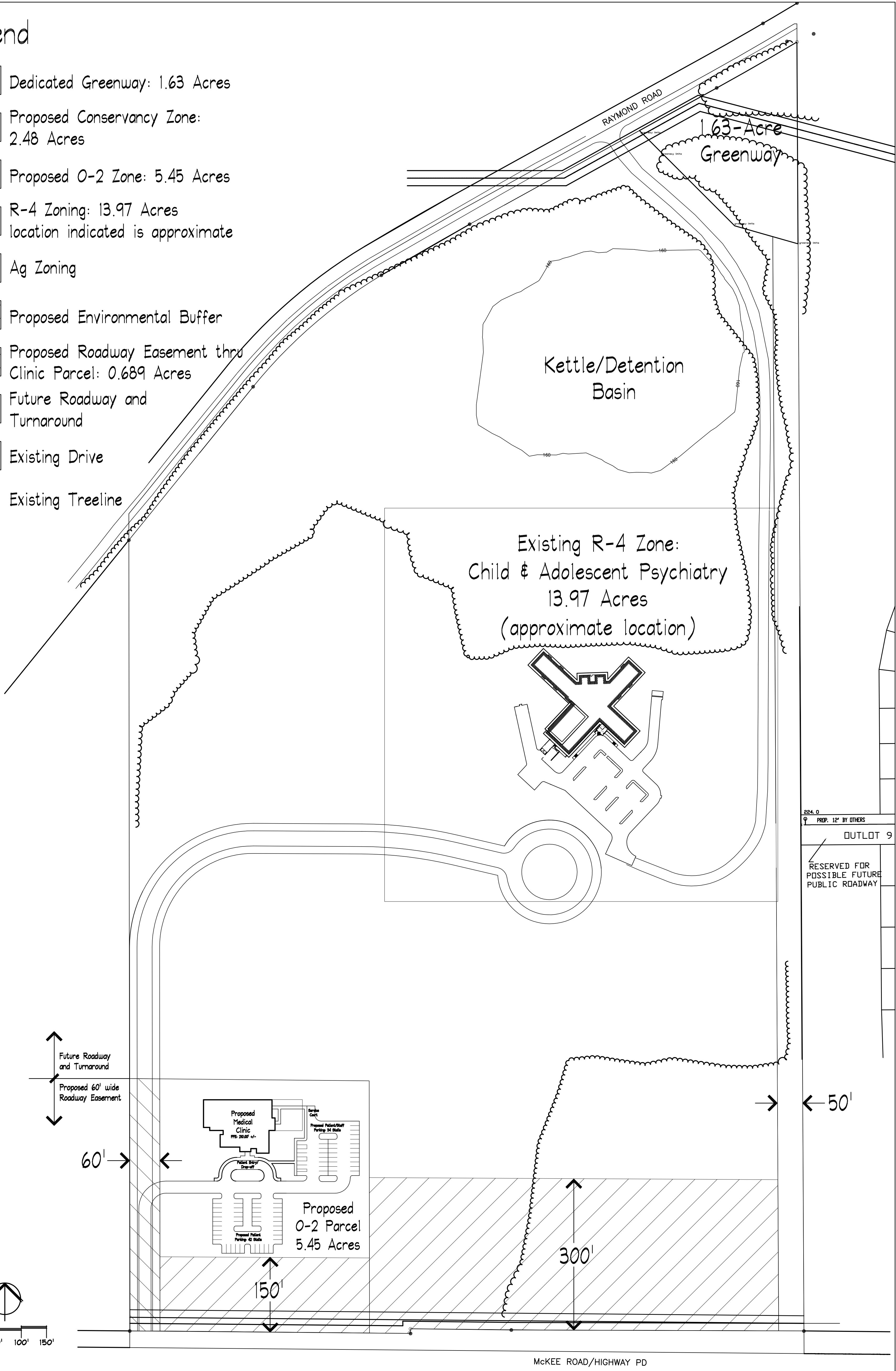


Legend

-  Dedicated Greenway: 1.63 Acres
-  Proposed Conservancy Zone: 2.48 Acres
-  Proposed O-2 Zone: 5.45 Acres
-  R-4 Zoning: 13.97 Acres
location indicated is approximate
-  Ag Zoning
-  Proposed Environmental Buffer
-  Proposed Roadway Easement thru Clinic Parcel: 0.689 Acres
-  Future Roadway and Turnaround
-  Existing Drive
-  Existing Treeline



Zoning Plan Meriter Health Services

Marshall Erdman & Associates
Healthcare facility planning, design and construction

1 June 2007

Cedar Glade Plant Community

Representative Species

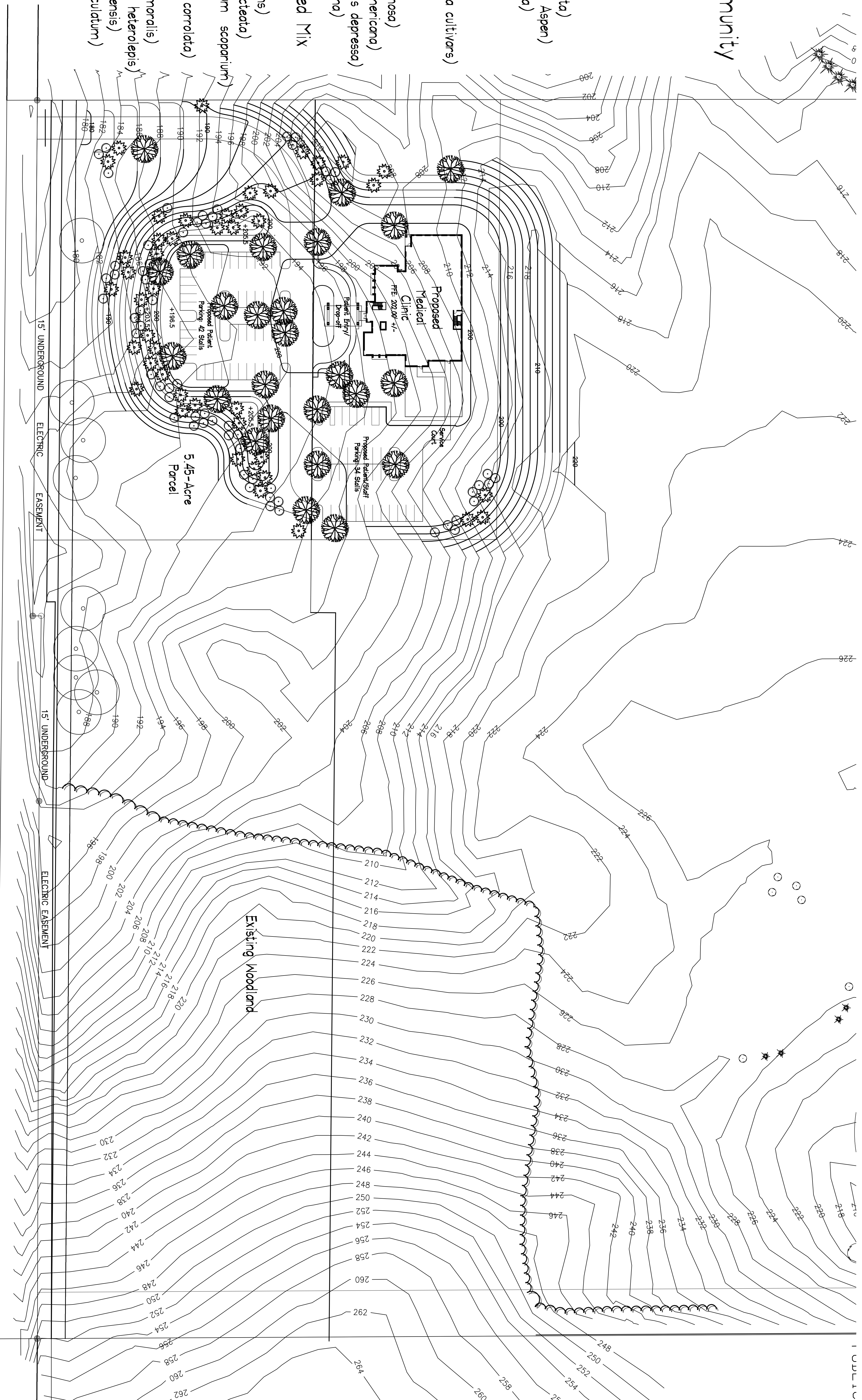
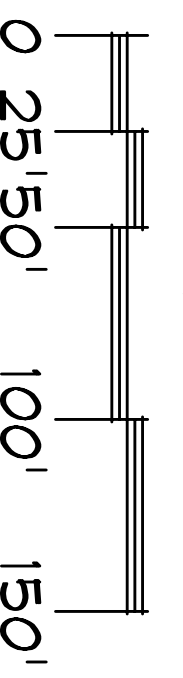
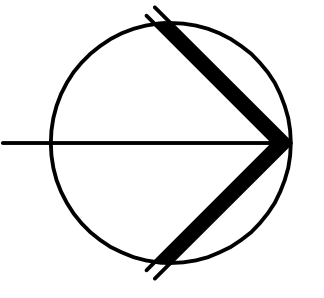
- Existing Tree
- Oak (*Quercus* species)

- Major Deciduous Tree**
- Shagbark Hickory (*Carya ovata*)
- Populus tremuloides (Quaking Aspen)
- Bur Oak (*Quercus macrocarpa*)
- Black Oak (*Quercus velutina*)

- Evergreen Tree**
- Redcedar (*Juniperus virginiana* cultivars)

- Shrub Massing**
- Gray Dogwood (*Cornus racemosa*)
- American Filbert (*Corylus americana*)
- Oldfield Juniper (*J. communis depressa*)
- Staghorn Sumac (*Rhus typhina*)

- Groundlayer Species Seed Mix**
- partial list of prevalent species
- Leadplant (*Amarpha canescens*)
- Hog Peanut (*Amphicarpa bracteata*)
- Little Bluestem (*Schizachyrium scoparium*)
- Smooth Aster (*Aster laevis*)
- Flowering Spurge (*Euphorbia corollata*)
- Beebalm (*Monarda fistulosa*)
- Gray Goldenrod (*Solidago nemoralis*)
- Prairie Dropseed (*Sporobolus heterolepis*)
- Spiderwort (*Tradescantia ohimensis*)
- Wild Geranium (*Geranium maculatum*)



Schematic Grading and Landscape Plan

Meriter Health Services



Marshall Erdman & Associates
Healthcare facility planning, design and construction

1 June 2007