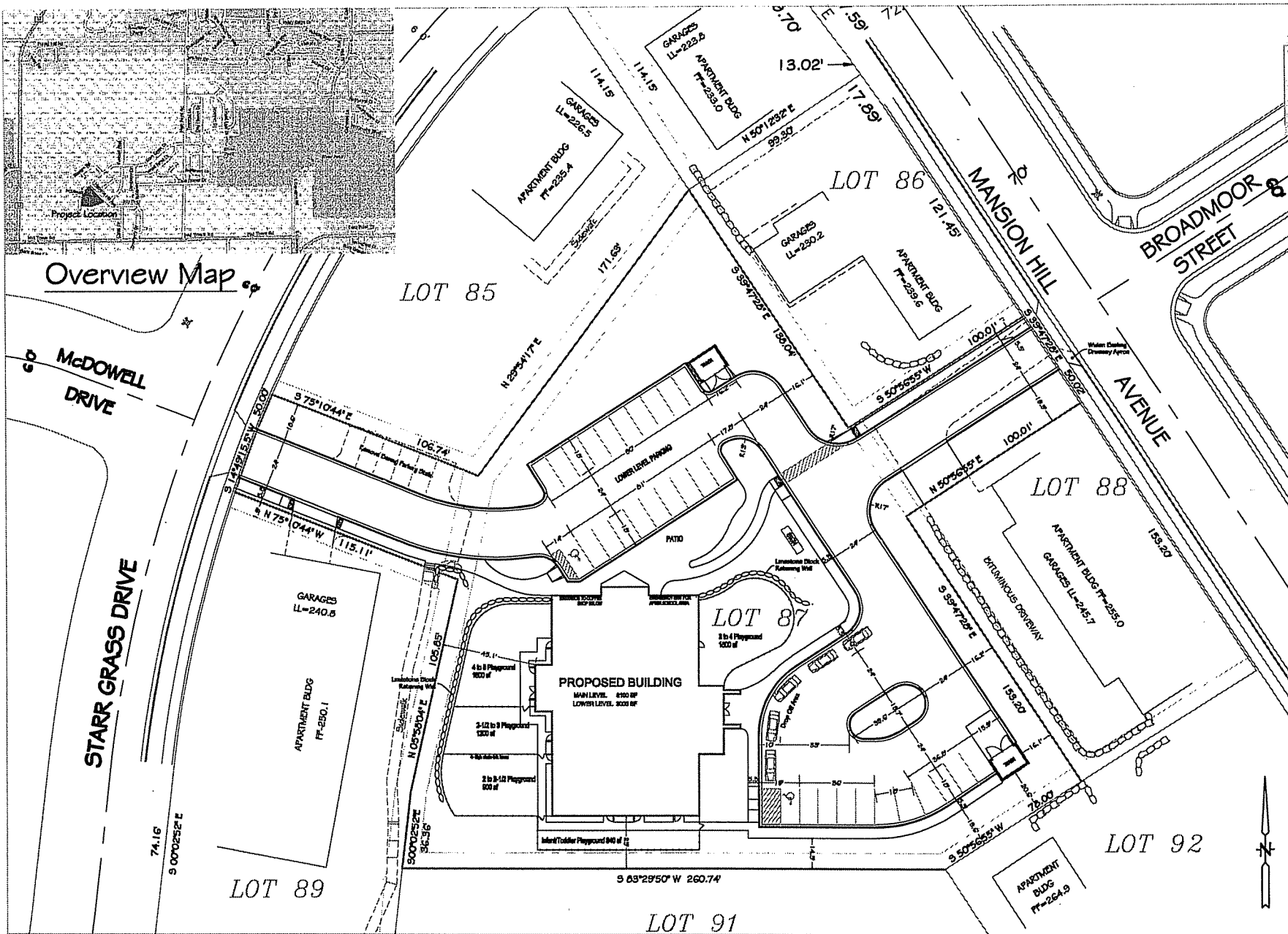


Overview Map



Architect/Engineer

McCoy ENGINEERING
 5400 Wisconsin Ave. Ste. 110, Madison, WI 53718
 Phone: 608.451.0778 Fax: 608.451.0733
 Architecture & Structural • Planning & Design
 Environmental • Industrial • Institutional • Residential

General Contractor

SUPREME STRUCTURES INCORPORATED
 4827 Sherman Rd., Madison, WI 53718

Site Consultant

HOMBURG CONTRACTORS, INC.

8000 Wisconsin Drive
 Madison, WI 53718
 (608) 264-8877
 (608) 264-8118 Fax

PROJECT

ACADEMY FOR
 LITTLE LEARNERS

8133 MANSION HILL AVE
 MADISON, WISCONSIN

DATE: 05-27-07, PLAN: GENERAL BARRIERS

REVISION

© 2007, Homburg Contractors, Inc.

LAYOUT PLAN

SCALE: 1" = 30'

C.I.O.





Architect/Engineer:

McCoy ENGINEERING
 2401 Wisconsin Ave., Madison, WI 53718
 Phone: 608-241-0715 Fax: 608-241-0723
 Commercial & Residential • Planning & Design
 Construction • Inspection • Estimating • Environmental

General Contractor:

SUPREME STRUCTURES
 INCORPORATED
 4487 Robertson Rd., Madison, WI 53714

Site Consultant:

HOMBURG CONTRACTORS, INC.

8300 Monona Drive
 Monona, WI 53118
 (608) 322-4887
 (608) 344-4113 Fax

PROJECT

ACADEMY FOR LITTLE LEARNERS

8133 MANSION HILL AVE
 MADISON, WISCONSIN

ISSUED
 2-06-07 PLAN COMPLETION SUBMITTAL

REVISED

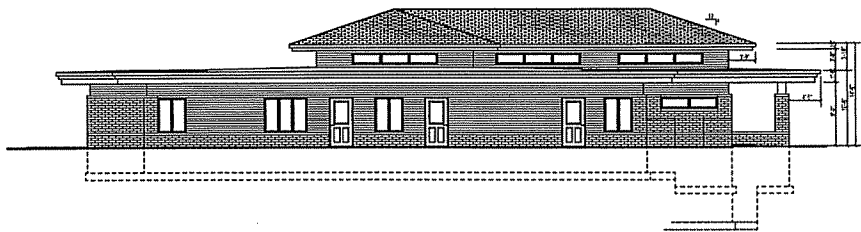
© 2007, Homburg Contractors, Inc.

GRADING AND UTILITY PLAN

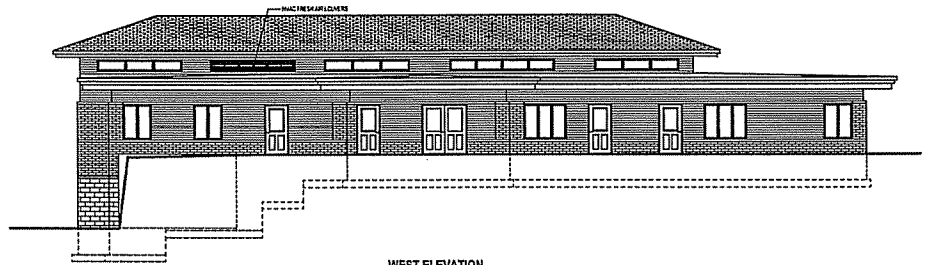
SCALE: 1" = 20'

C 2.0

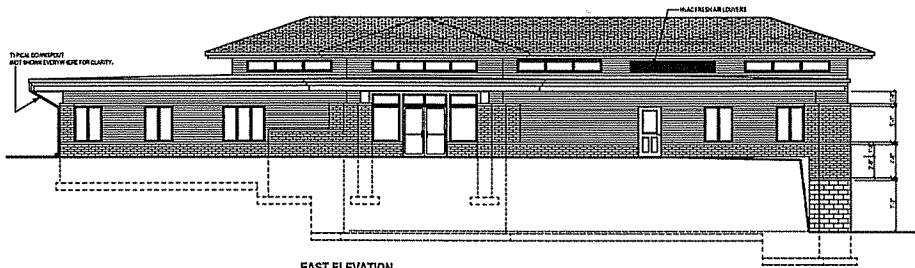




SOUTH ELEVATION



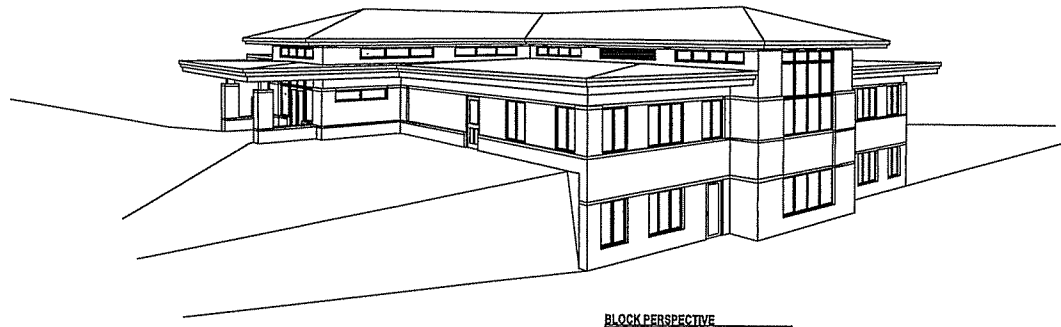
WEST ELEVATION



EAST ELEVATION



NORTH ELEVATION



BLOCK PERSPECTIVE

© COPYRIGHT
 These plans and design documents, including all related to, are the property of Supreme Structures, Inc. and are intended for the use of the client only. No part of these plans or design documents may be reproduced, stored in a retrieval system, or transmitted in any form or by any means, electronic, mechanical, photocopying, recording, or by any information storage and retrieval system, without the prior written permission of Supreme Structures, Inc. All rights reserved.

SUPREME STRUCTURES INCORPORATED 4457 Robinson Road, Madison, WI 53711 Phone (608) 214-6771 Fax (608) 214-0778		DRAWN BY: APPROVED BY: DATE:
McCOY ENGINEERING 8448 Wisconsin Ave. #110-116, Wauwatosa, WI 53226 Phone: (414) 251-1116 Fax: (414) 251-1117		SCALE: AS SHOWN DRAWING NO: T0627
PROJECT: Academy for Little Learners		SHEET NO: A-3
LOCATION: 8133 Mansion Hill Ave Madison, WI		SHEET TITLE: ELEVATIONS

CITY OF MADISON REQUIREMENTS:

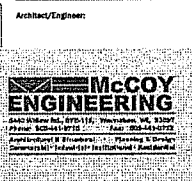
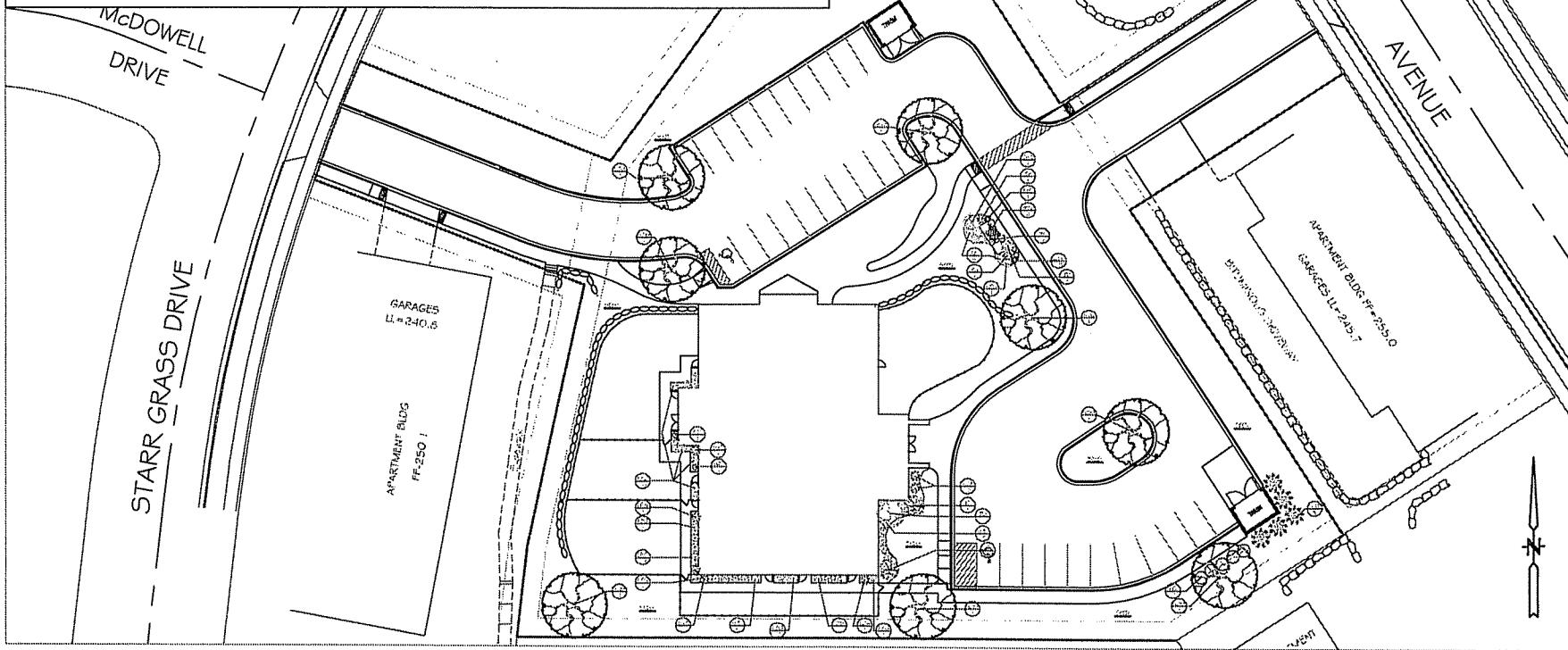
NUMBER OF PARKING STALLS: 34
 NUMBER OF CANOPY TREES NEEDED: 3
 NUMBER OF POINTS NEEDED: 510
 NUMBER OF POINTS ACHIEVED: 529

PLAN NOTES:

ALL TOPSOIL TO BE IN PLACE TO WITHIN 1" OF FINAL GRADE BEFORE DECORATIVE LANDSCAPING STARTS
 BEDS NEAR FOUNDATION AND AROUND SIGN TO RECEIVE 2" #2 WASHED LOCAL STONE OVER TYFAR. BEDS SHALL HAVE BORDER OF DIMEX PRO LANDSCAPE EDGING
 ALL OUTER PLANTS TO RECEIVE 3" RING OF 3" DEPTH SHREDDED BARK MULCH, NO TYFAR, NO EDGING
 FINE GRADE, SEED, (MADISON PARKS OR EQUIV.), FERTILIZE AND MULCH ALL DISTURBED AREAS

KEY/PLANT LIST AND POINTS

TRFMS	QUANTITY	SIZE	ROOT	POINTS
TREES				
SGM ACER X FREEMANII SIENNA GLEN	6	2 1/2"	DB	5@50 = 250 (+3 REQUIRED AS CANOPY TREES)
SHRUBS				
AZ ARONIA ARBUTIFOLIA 'RECTA'	5	#3	CG	5@6 = 30
PD CORNUS ALTERNIFOLIA	1	5'	DB	
ID CORNUS SERICIA 'ISANTIF'	2	#3	CG	
CWE EUDONYMUS ALATUS 'COMPACTUS'	1	#3	CG	1@9 = 9
W GENISTA TINCTORIA 'GOLDEN TEMPLATE'	2	#1	CG	2@3 = 6
AC RIBES ALPINUM	5	2 1/2"	DB	5@30 = 150 RESIDENTIAL SCREENING
LPS SPIREA 'LITTLE PRINCESS'	16	#2	CG	
EVERGREEN				
LGA THUJA OCCIDENTALIS 'LITTLE GIANT'	7	#3	CG	7@3 = 21
EA THUJA OCCIDENTALIS 'SMARAGD'	2	4'	DB	2@30 = 60
DGA THUJA OCCIDENTALIS 'NIGRA'	5	5'	DB	5@30 = 150
BJ JUNIPERUS 'SABINA 'BUFFALO'	1	#3	CG	1@3 = 3
PERENNIALS				
KFG CALAMAGROSTIS ACUTIFLORA 'KARL FOERSTER'	17	#1	CG	
JBG CRANESBILL GERANIUM 'JOLLY BEE'	4	#1	CG	
ABJ SEDUM 'AUTUMN JOY'	6	#1	CG	



General Contractor



Landscape Consultant



PROJECT

ACADEMY FOR LITTLE LEARNERS

8133 MANSION HILL AVE
MADISON, WISCONSIN

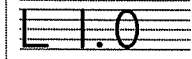
ISSUED
2-20-07 PLAN COMPOSITION SUBMITTAL

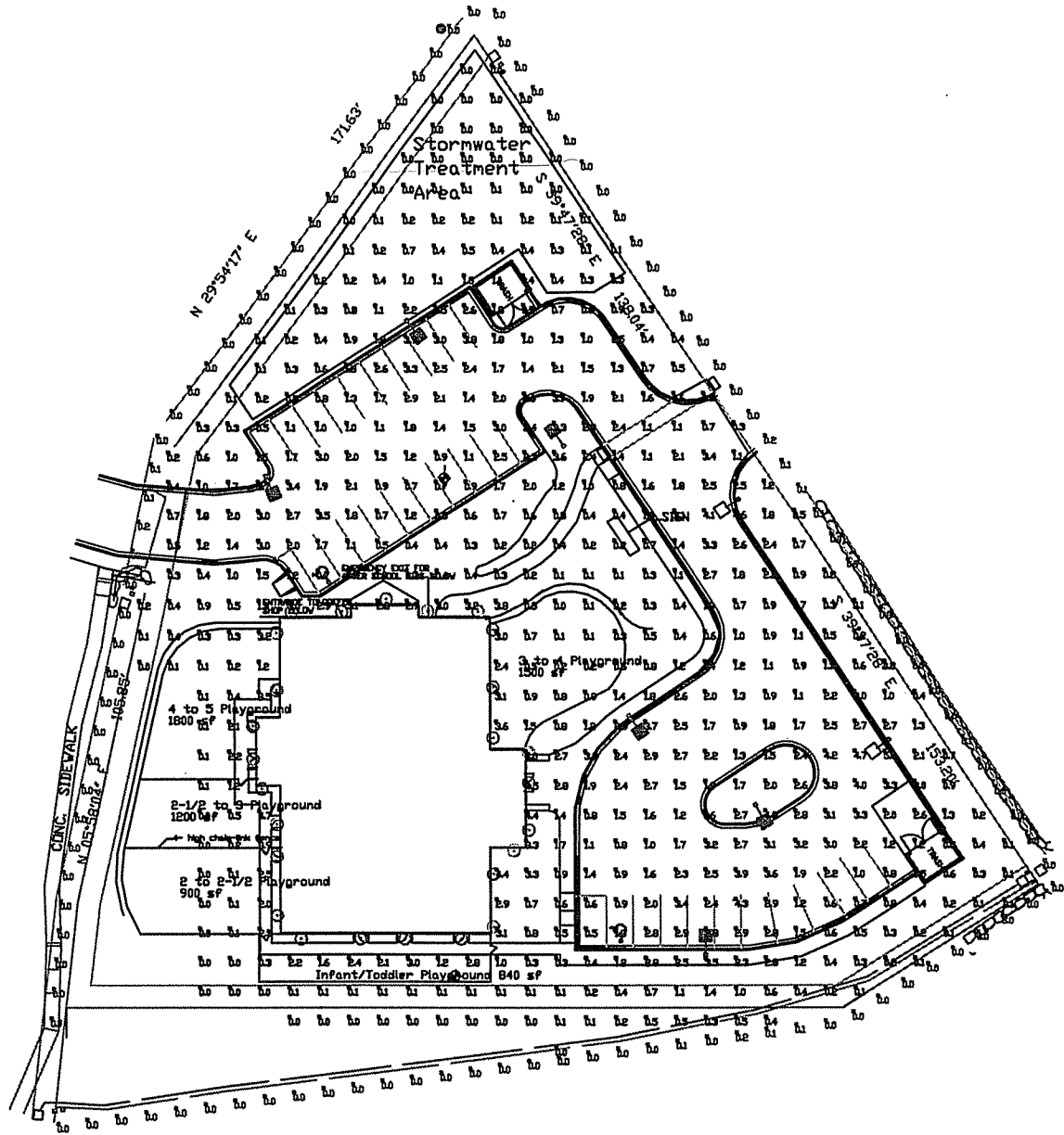
REVISED

Scale 1" = 20'

LANDSCAPE PLAN

SCALE: 1" = 20'





Parking Lot Only (at grade)

Illuminance Values(Fc)
 Average =1.94
 Maximum =5.0
 Minimum =0.5
 Avg/Min Ratio=3.88
 Max/Min Ratio=10.00

Symbol	Qty	Label	Arrangement	Lumens	LLF	Description
□	6	PR	SINGLE	12500	0.800	PR2215-H (150w pwr)
■	2	PR-SBL	SINGLE	12500	0.800	PR2215-H (150w pwr)
○	26	RT18MH	SINGLE	3000	0.250	R7M25 (50w rh)

- (8) PS4S17C1BZ 17 x 4 x .125 Square steel poles
- (2) SBL-16 Backlight shields
- *** Poles meet 140 mph wind zone requirements
- *** R7 recessed fixtures mounted under the soffit at 11'
- *** PR fixtures mounted at 17' w/no tilt

RUUD LIGHTING
 800.236.7000 USA <www.ruudlighting.com> 905.671.1991 CAN

Illuminance results shown on this lighting design are based on project parameters provided to Ruud Lighting and in conjunction with standard test procedures conducted under laboratory conditions. Actual project conditions differing from these design parameters may affect field results. The customer is responsible for verifying compliance with any applicable electrical, lighting, or energy code.

Date: 2/6/2007 Engineer: Bill Schubert
 Project Name: Lyons Electric (846126) - Little Learners
 Filename: 70206LYBRS.a32

FOOTCANDLES CALCULATED AT GRADE USING MEAN LUMENS					
Numeric Summary					
Label	Avg	Max	Min	Avg/Min	Max/Min
Sf/c (at grade)	1.94	5.0	0.5	3.88	10.00
Foot (17' above grade)	0.81	2.2	0.3	3.88	10.00