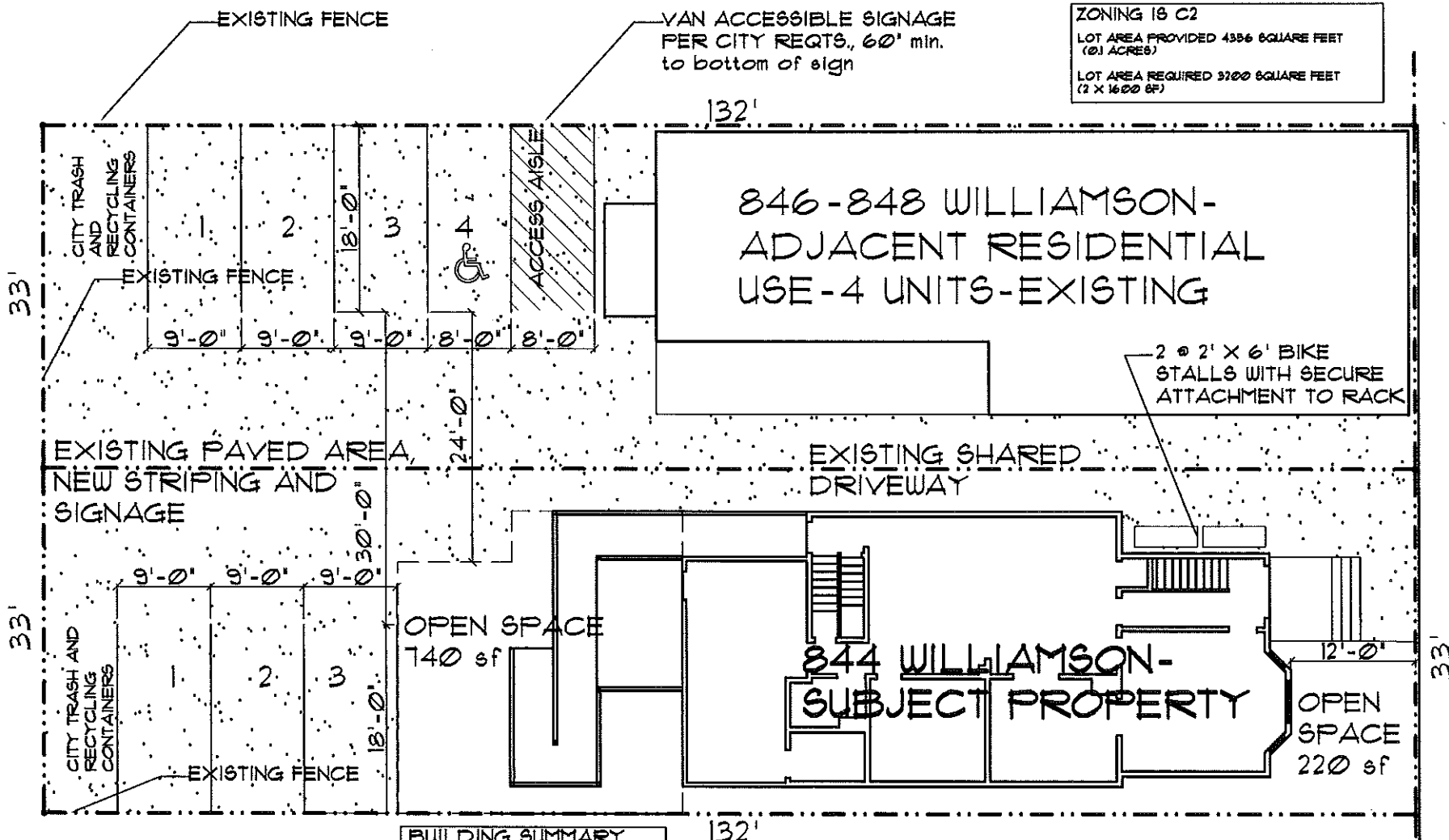


ZONING IS C2
 LOT AREA PROVIDED 4356 SQUARE FEET
 (0.1 ACRES)
 LOT AREA REQUIRED 3200 SQUARE FEET
 (2 X 1600 SF)



846-848 WILLIAMSON-
 ADJACENT RESIDENTIAL
 USE-4 UNITS-EXISTING

844 WILLIAMSON-
 SUBJECT PROPERTY

WILLIAMSON STREET

PARKING SPACE SUMMARY

CAR PARKING	
SURFACE SPACES	THREE (3)
GARAGE SPACES	ZERO (0)
PROVIDED: THREE (3) TOTAL	
REQUIRED: THREE (3) TOTAL	

BICYCLE PARKING 2 STALLS PROVIDED
 2 STALLS REQUIRED

BUILDING SUMMARY

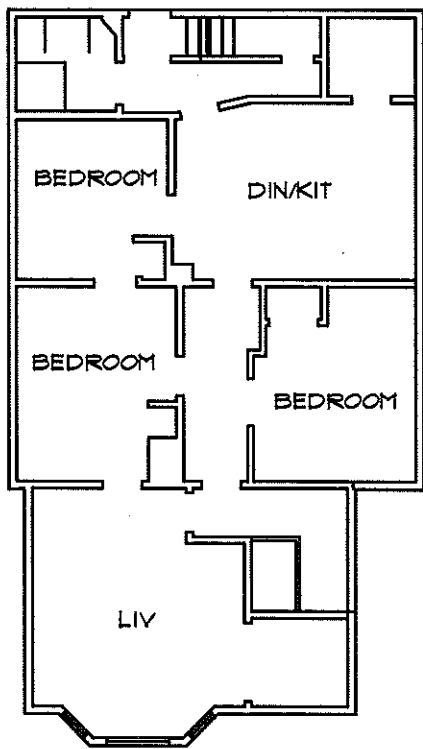
BASEMENT	
NO FINISHED SPACE	
FIRST FLOOR 1343 SQ FT GROSS	
RESIDENTIAL SPACE THREE BEDROOM UNIT	PROPOSED
SECOND FLOOR 120 SQ FT GROSS	
RESIDENTIAL SPACE THREE BEDROOM UNIT	EXISTING
PROJECT TOTALS	2 RESIDENTIAL UNITS
2 THREE BEDROOM UNITS	
USABLE OPEN SPACE	
TOTAL PROVIDED	960 SQ FT
TOTAL REQUIRED	960 SQ FT (160 X 6 BEDROOMS)



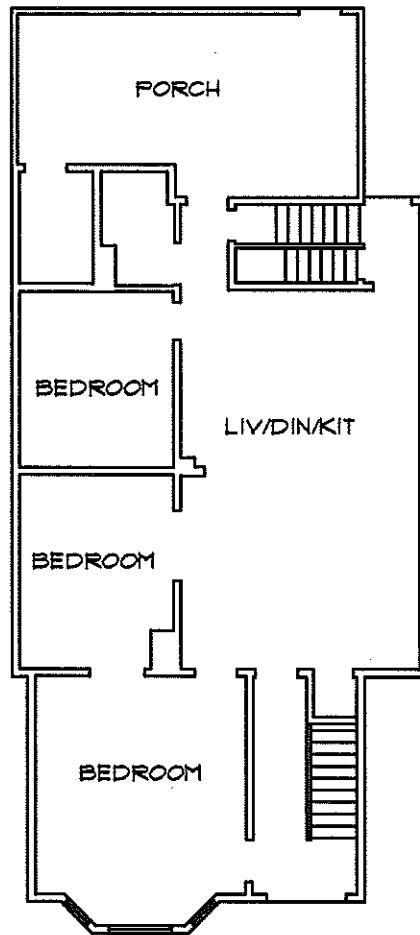
6/1/11 **CONDITIONAL USE**
 PROPOSED TWO-UNIT
 844 WILLIAMSON STREET
 MADISON, WISCONSIN

glueck architects
 118 North Few Street, Madison, WI 53703 (608)251-2551

1045
 1 of 2



SECOND FLOOR PLAN



FIRST FLOOR PLAN



feet

	RESIDENTIAL USAGE 844 WILLIAMSON STREET MADISON, WISCONSIN	 118 North Few Street, Madison, WI 53703 (608)251-2551	1045 02 OF 2
	CONDITIONAL USE		