

PRELIMINARY NOT FOR CONSTRUCTION

SITE STATISTICS - EAST TOWNE MALL

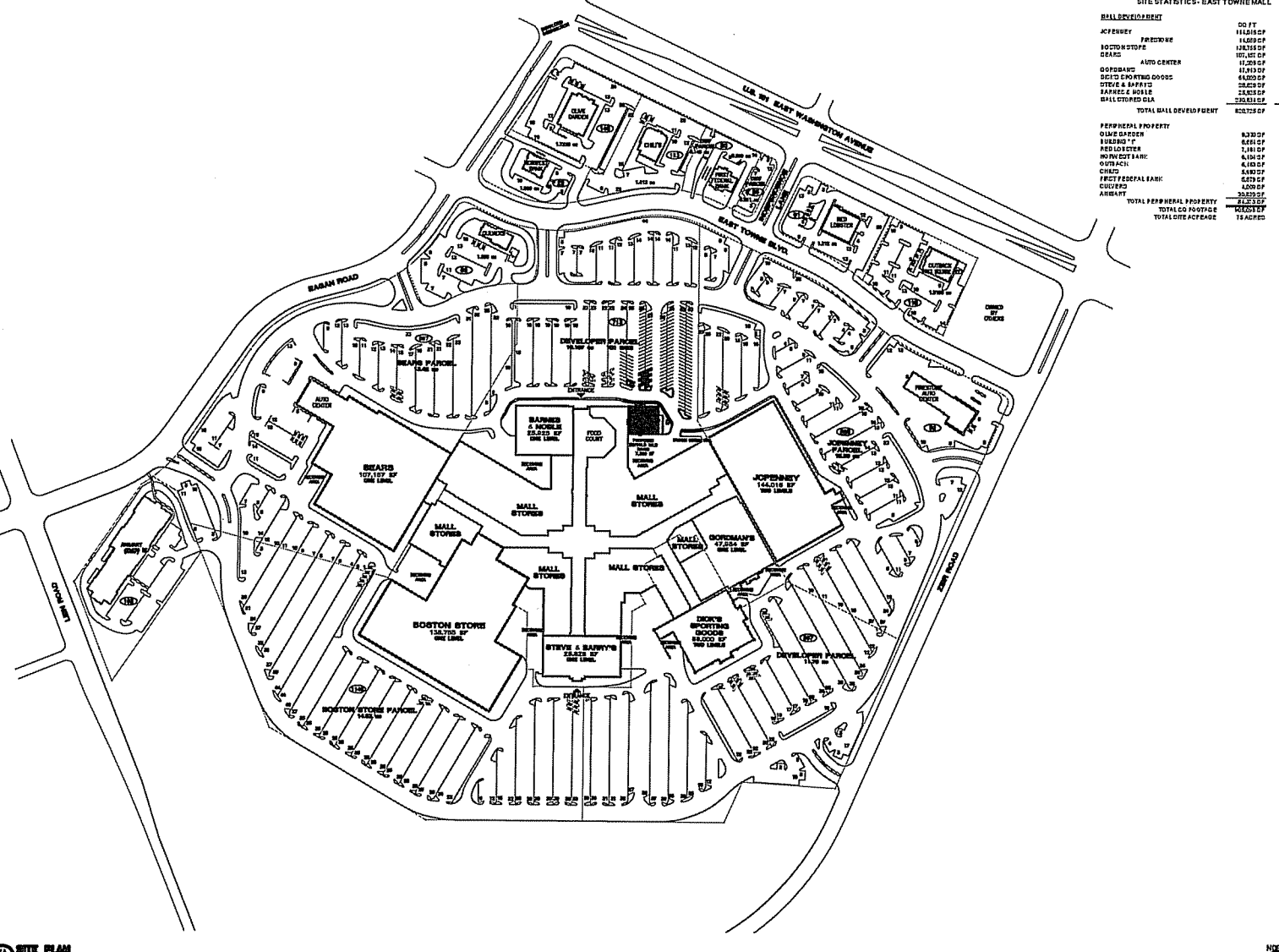
DEVELOPMENT	SQ. FT.	FAPR. NO.
JOHNSON	11,619 SF	116
BOSTON STORE	18,715 SF	118
DEARS	107,187 SF	119
GOBBARD	11,913 SF	120
DEPT. SPORTING GOODS	44,000 SF	121
STEVE & SARA'S	28,425 SF	122
FARMER & BOYLE	28,425 SF	123
MALL STORES GLA	200,612 SF	124
TOTAL MALL DEVELOPMENT	820,725 SF	436
PERIPHERAL PROPERTY		
OLIVE GARDEN	8,320 SF	110
BURGERS 'N'	6,661 SF	111
RED LOSTER	1,181 SF	112
WINEYARD E&C	6,430 SF	113
OUTBACK	6,183 SF	114
CHICK	6,887 SF	115
PFCY FEDERAL B&B	6,479 SF	116
CUSPERO	4,009 SF	117
ARMERY	20,875 SF	118
TOTAL PERIPHERAL PROPERTY	112,252 SF	
TOTAL SQ. FOOTAGE	932,977 SF	
TOTAL SITE ACREAGE	15.68 AC	

PATRICK G. BLEES
 ARCHITECT
 218 W. 2ND ST., SUITE 301
 MADISON, WI 53703
 PHONE: (608) 255-4877
 FAX: (608) 255-2385
 E-MAIL: info@patrickgblees.com
 CONTACT: JEREMY NELSON

CONSULTANTS:
ERICKSON ELLISON & ASSOCIATES, INC.
 2225 UNIVERSITY AVENUE, STE 202
 ST. PAUL, MN 55114-1231
 PHONE: (612) 833-2200
 FAX: (612) 833-8297
ADVANCED STRUCTURAL
 TIDWATER, INC.
 2225 E. 5TH STREET, STE 220
 BLOOMINGTON, MN 55005
 PHONE: (612) 251-0322
 FAX: (612) 251-8990
CHALLENGE ENGINEERING, LLC.
 6710 VOEGEL ROAD
 MADISON, WI 53719
 PHONE: (608) 839-2444
 FAX: (608) 839-2445
BLAIR LANDSCAPING
 3030 GALEWAY PLACE
 MADISON, WI 53718
 PHONE: (608) 255-1520

PRELIMINARY NOT FOR CONSTRUCTION

PRELIMINARY NOT FOR CONSTRUCTION



SEAL:
 13-10-07
 DATE ISSUED
 REC. NO.

CEL PROPERTIES
 EAST TOWNE MALL
 89 EAST TOWNE MALL
 MADISON, WI 53704

SHELL BUILDING

SHEET TITLE:
 SITE PLAN

REVISIONS:

NO.	DATE	BY

PROJECT NO. 0712101
 DRAWN BY: JRM

A000

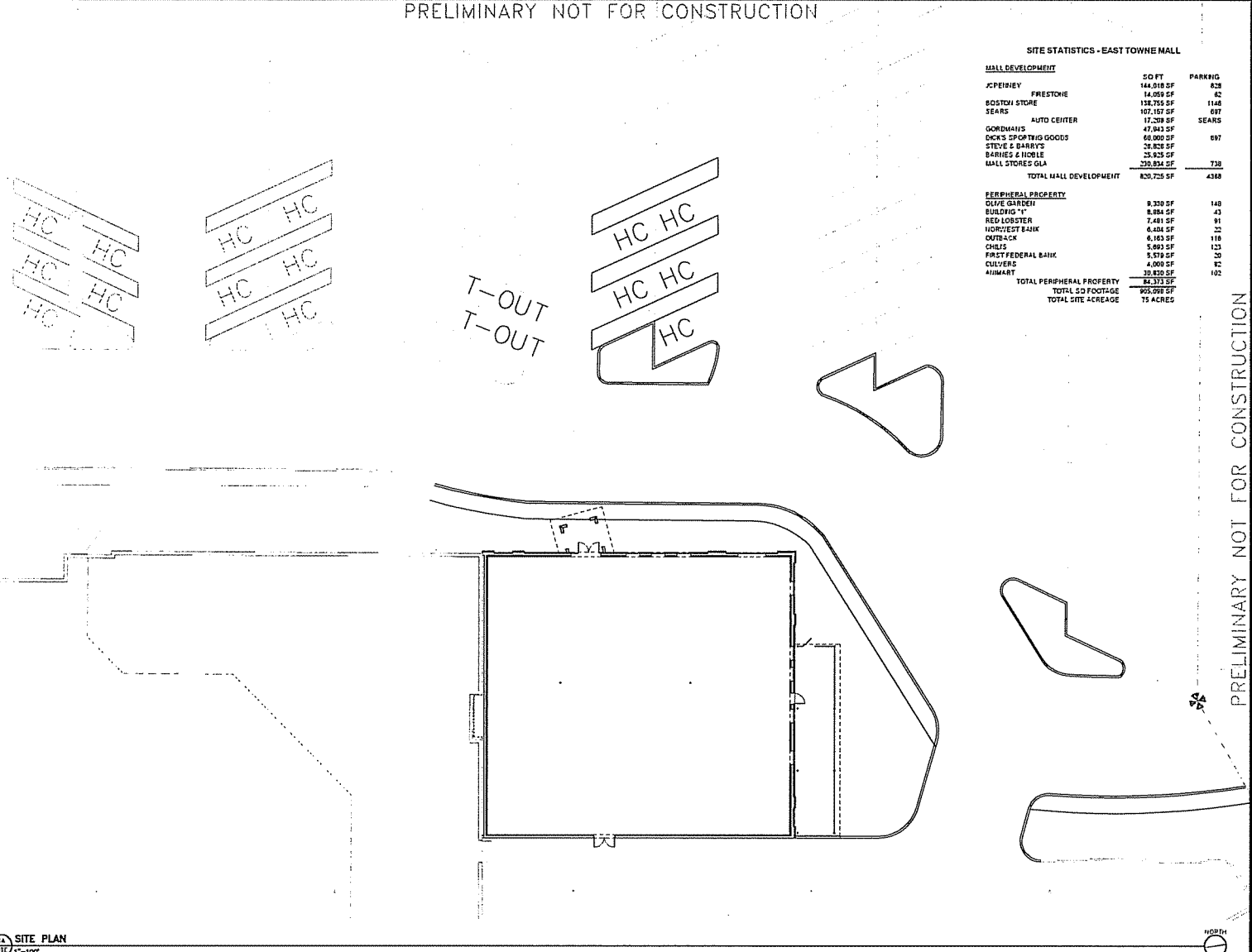
SHEET 13 OF 16
 COPYRIGHT PATRICK G. BLEES, 08 2007

PRELIMINARY NOT FOR CONSTRUCTION



PRELIMINARY NOT FOR CONSTRUCTION

PRELIMINARY NOT FOR CONSTRUCTION



SITE STATISTICS - EAST TOWNE MALL

MALL DEVELOPMENT		PARKING	
JCPENNEY	144,018 SF	828	
FRESTONE	14,059 SF	82	
SOUTHWEST STORE	138,755 SF	1148	
SEARS	107,157 SF	697	
AUTO CENTER	17,309 SF		697
GORDMANS	47,943 SF		697
DICKS SPORTING GOODS	60,000 SF		697
STEVE & BARBYS	26,828 SF		
BARRIES & HUBLE	25,825 SF		
MALL STORES GLA	230,534 SF		730
TOTAL MALL DEVELOPMENT	820,725 SF		4388

PERIPHERAL PROPERTY		PARKING	
OLIVE GARDEN	9,330 SF	148	
BUILDING "1"	8,884 SF	43	
RED LOBSTER	7,481 SF	91	
NORTHWEST BANK	6,484 SF	23	
OUTBACK	6,183 SF	118	
CHILDS	5,903 SF	123	
FIRST FEDERAL BANK	5,579 SF	20	
CULVERS	4,000 SF	82	
ALIMART	39,820 SF	192	
TOTAL PERIPHERAL PROPERTY	84,373 SF		
TOTAL SQ FOOTAGE	905,098 SF		
TOTAL SITE ACREAGE	75 ACRES		

PATRICK G. BLEES ARCHITECT
 218 N. 2ND ST., SUITE 301
 MADISON, WI 53704
 PHONE: (608) 251-1277
 FAX: (608) 251-2955
 E-MAIL: info@patrickg.com
 CONTACT: JEREMY NELSON

CONSULTANTS:
 ERICKSON ELLISON & ASSOCIATES, INC.
 265 UNIVERSITY AVENUE, STE 200
 ST. PAUL, MN 55114-1231
 PHONE: (651) 832-2300
 FAX: (651) 832-2337

ADVANCED STRUCTURAL TECHNOLOGIES, INC.
 2625 E. 5TH STREET, STE 233
 BLOOMINGTON, MN 55425
 PHONE: (651) 834-4207
 FAX: (651) 834-5690

CAHANE ENGINEERING, LLC.
 5015 WOODS ROAD
 MADISON, WI 53718
 PHONE: (608) 838-0444
 FAX: (608) 838-0445

BLAIR LANDSCAPING
 3035 GATEWAY PLACE
 MADISON, WI 53704
 PHONE: (608) 255-1920

SEAL:

PATRICK G. BLEES, ARCHITECT

12-18-07

DATE PLOTTED

REV 15

CEL PROPERTIES
 EAST TOWNE MALL
 89 EAST TOWNE MALL
 MADISON, WI 53704

SHELL BUILDING

SHEET TITLE:
 SITE PLAN

REVISIONS:

NO.	DATE	BY

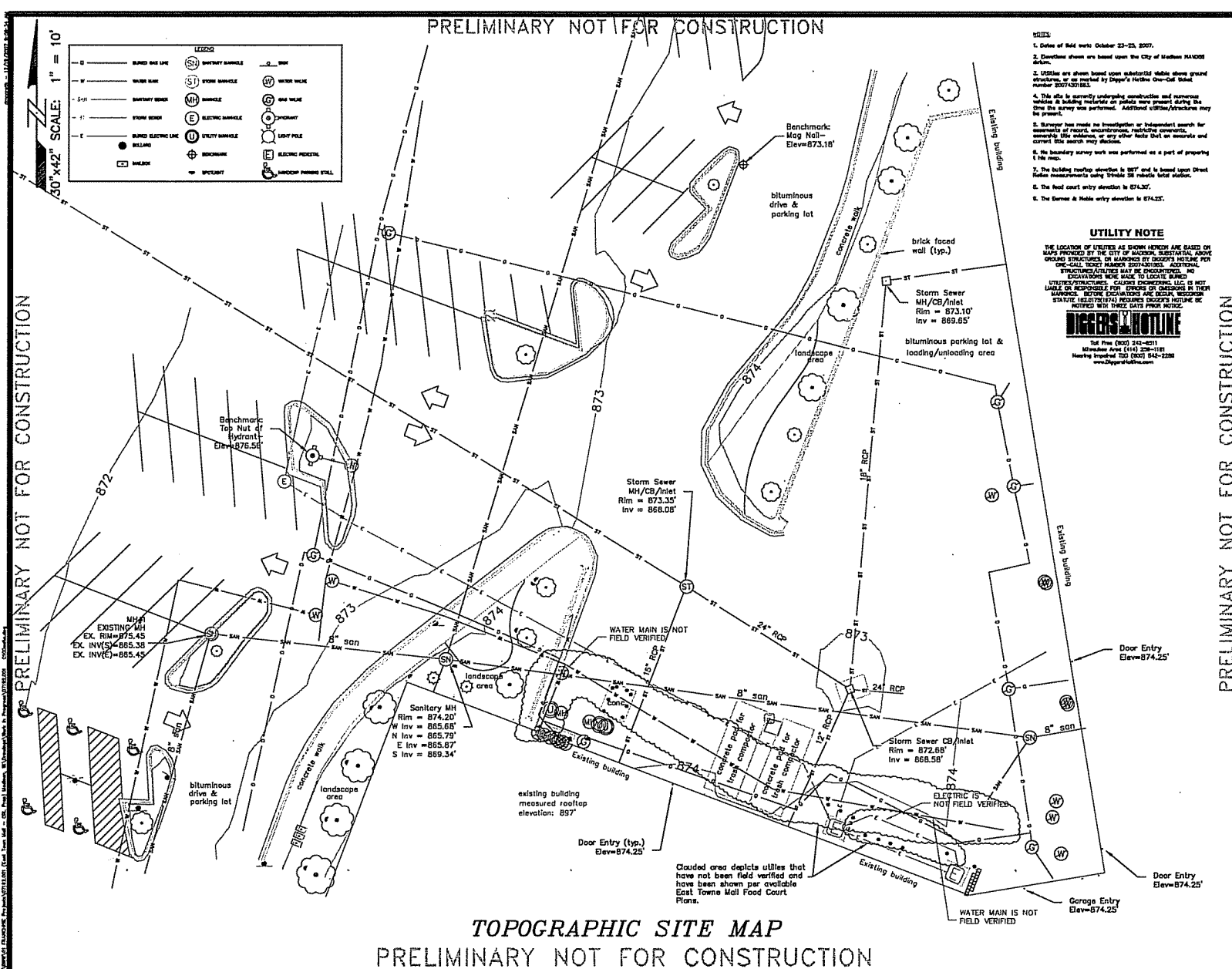
PROJECT NO: 07192301
 DRAWN BY: JNW

A001

SHEET 12 OF 10
 COPYRIGHT PATRICK G. BLEES, 04/2007

24 SITE PLAN
 1"=100'

PRELIMINARY NOT FOR CONSTRUCTION



PATRICK G. BILES, ARCHITECT
 318 N. 22ND ST., SUITE 301
 MADISON, WI 53702
 PHONE: (608) 233-3477
 FAX: (608) 233-2953
 E-MAIL: patrick@pbl.com
 CONTACT: JEREMY NELSON

CONSULTANTS:
ERICKSON ELLISON & ASSOCIATES INC.
 2625 UNIVERSITY AVENUE, STE 200
 ST. PAUL, MN 55113-1213
 PHONE: (612) 232-2200
 FAX: (612) 232-2201

ADVANCED STRUCTURAL TECHNOLOGIES INC.
 2620 E. 52ND STREET, STE 230
 BLOOMINGTON, MN 55425
 PHONE: (763) 854-8302
 FAX: (763) 854-8900

CALKINS ENGINEERING, LLC.
 6705 WISCONSIN ROAD
 MADISON, WI 53718
 PHONE: (608) 638-0444
 FAX: (608) 638-0440

BLAIR LANDSCAPING
 300 SATELY PLACE
 MADISON, WI 53704
 PHONE: (608) 253-1222

SCALE:

PATRICK G. BILES, ARCHITECT
 13-06-07
 DATE ISSUED:
 REV. NO. 6-0714

CBL PROPERTIES
 EAST TOWNE MALL
 85 EAST TOWNE MALL
 MADISON, WI 53704

SHELL BUILDING

SHEET TITLE:
 EXISTING SITE PLAN

REVISIONS:

NO.	DATE	BY

PROJECT NO. 0718101
DRAWN BY

C100
 SHEET 1 OF 10
 COPYRIGHT PATRICK G. BILES, 04 2007

PRELIMINARY NOT FOR CONSTRUCTION

PRELIMINARY NOT FOR CONSTRUCTION

PRELIMINARY NOT FOR CONSTRUCTION

PATRICK G. BLEES ARCHITECT
PATRICK G. BLEES, ARCHITECT
318 N. 2ND ST., SUITE 301
MINNEAPOLIS, MN 55401
PHONE: (612) 335-4877
FAX: (612) 335-2915
E-MAIL: info@patrickgblees.com
CONTACT: JEREMY NELSON

CONSULTANTS:
ERICKSON ELLISON & ASSOCIATES INC.
265 UNIVERSITY AVENUE, STE 200
ST. PAUL, MN 55114-1211
PHONE: (612) 832-2300
FAX: (612) 832-2397
ADVANCED STRUCTURAL TECHNOLOGIES INC.
2620 E 82ND STREET, STE 230
ROSDALE, MN 55126
PHONE: (612) 824-8322
FAX: (612) 824-8889
CALLKINS ENGINEERING, LLC.
1015 WISNER ROAD
WABONA, WI 53198
PHONE: (262) 636-0444
FAX: (262) 636-0446
BLAIR LANDSCAPING
3300 SAUNTY PLACE
WABONA, WI 53194
PHONE: (262) 325-1820



SCALE:
30"X42" = 1" : 10'

- LEGEND:**
- PROPOSED STORM SEWER
 - EXISTING STORM SEWER
 - - - - - DISTURBED/SAWCUT LIMITS
 - DRAINAGE ARROW
 - X 873.45 PROPOSED SPOT ELEVATION
 - X 873.13 EXISTING SPOT ELEVATION
 - PROPOSED RETECTING CURB AND GUTTER
 - PROPOSED ACCEPTING CURB AND GUTTER
 - EXISTING CURB AND GUTTER

SHEET TITLE:
CRADING PLAN

REVISIONS:

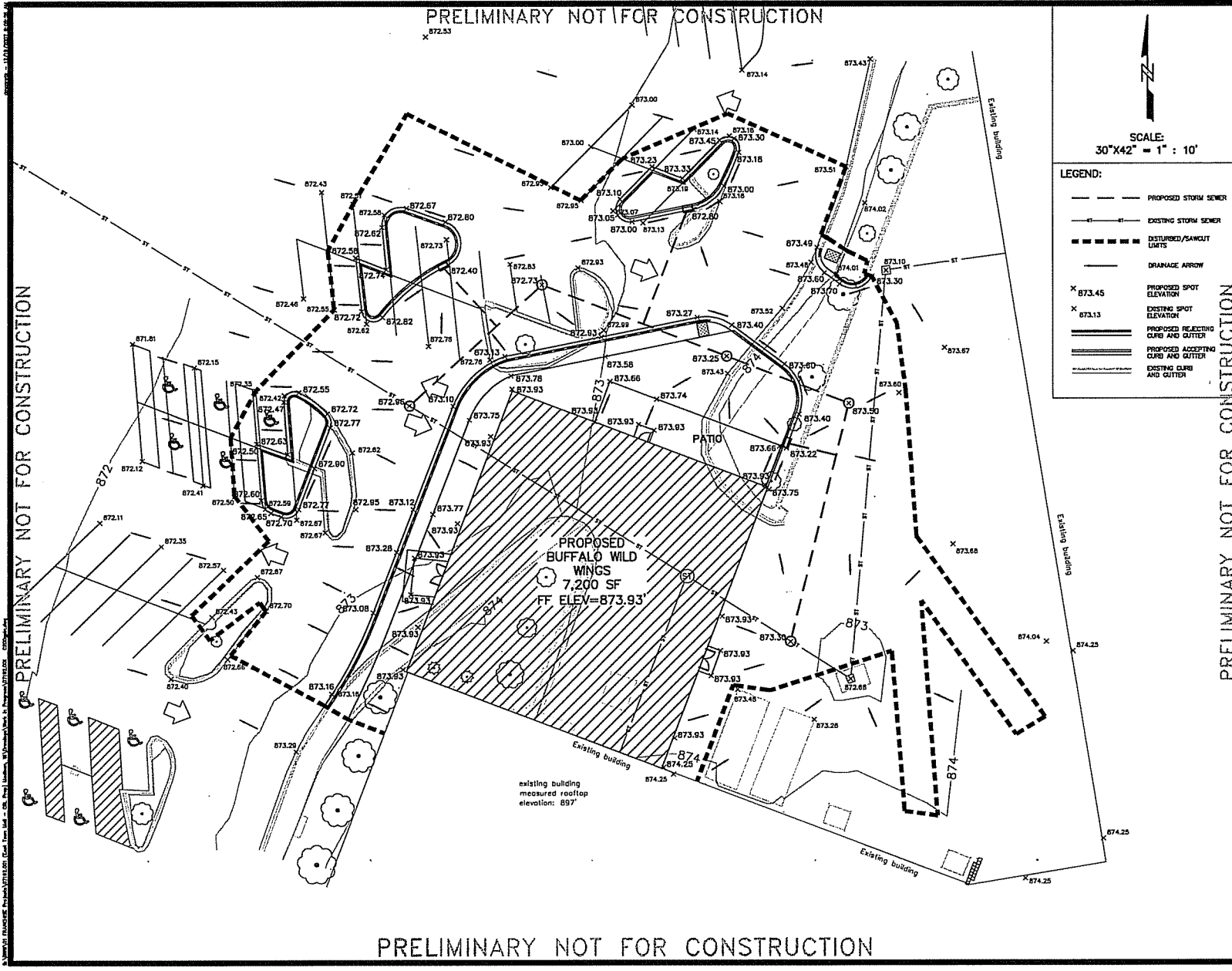
NO.	DATE	BY

PROJECT NO: 07182601
DATE: 12-16-07
SCALE: 1/8" = 1'-0"

SHELL BUILDING

PROJECT NO: 07182601
DATE: 12-16-07
SCALE: 1/8" = 1'-0"

C200
SHEET 1 OF 10
COPYRIGHT PATRICK G. BLEES, 2007



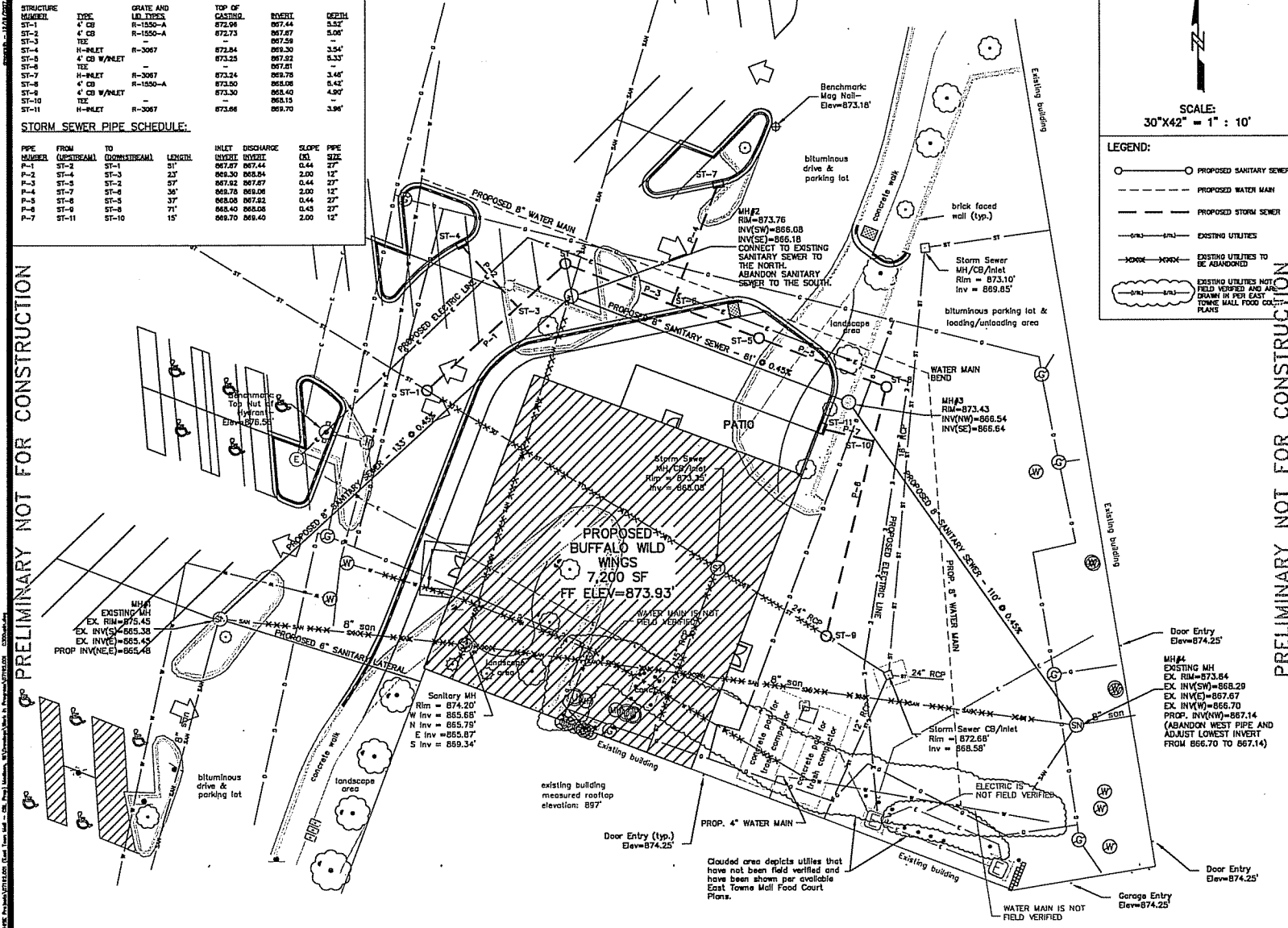
STORM SEWER STRUCTURE SCHEDULE:

STRUCTURE NUMBER	TYPE	GRATE AND LEL TYPE	TOP OF CASTING	ROBERT	DEPTH
ST-1	4" CB	R-1550-A	872.98	867.44	5.54'
ST-2	4" CB	R-1550-A	872.73	867.87	5.00'
ST-3	TEZ	-	867.58	867.58	-
ST-4	H-INLET	R-3067	872.84	869.30	3.54'
ST-5	4" CB W/INLET	-	873.23	867.92	5.31'
ST-6	TEZ	-	867.81	867.81	-
ST-7	H-INLET	R-3067	873.24	869.78	3.46'
ST-8	4" CB	R-1550-A	873.00	868.06	4.94'
ST-9	4" CB W/INLET	-	873.30	868.40	4.90'
ST-10	TEZ	-	865.15	865.15	-
ST-11	H-INLET	R-3067	873.66	869.70	3.96'

STORM SEWER PIPE SCHEDULE:

PIPE NUMBER	FROM (UPSTREAM)	TO (DOWNSTREAM)	LENGTH	INLET (DI)	DISCHARGE (DI)	SLOPE	PIPE SIZE
P-1	ST-2	ST-1	31'	867.87	867.44	0.44	24"
P-2	ST-4	ST-3	23'	869.30	868.84	2.00	12"
P-3	ST-5	ST-2	67'	867.82	867.87	0.44	24"
P-4	ST-7	ST-6	36'	869.78	869.06	2.00	12"
P-5	ST-8	ST-5	37'	868.06	867.82	0.44	24"
P-6	ST-9	ST-8	71'	868.40	868.08	0.43	24"
P-7	ST-11	ST-10	15'	869.70	868.40	2.00	12"

PRELIMINARY NOT FOR CONSTRUCTION



PRELIMINARY NOT FOR CONSTRUCTION

PRELIMINARY NOT FOR CONSTRUCTION

SCALE:
30"x42" = 1" : 10'

LEGEND:

- ○ PROPOSED SANITARY SEWER
- PROPOSED WATER MAIN
- PROPOSED STORM SEWER
- EXISTING UTILITIES
- EXISTING UTILITIES TO BE ABANDONED

EXISTING UTILITIES NOT FIELD VERIFIED AND ARE DRAWN IN PER EAST TOWNE MALL FOOD COURT PLANS

PATRICK G. BLEZ, ARCHITECT
318 N. 2ND ST., SUITE 301
MILWAUKEE, WI 53201
PHONE: (414) 335-8477
FAX: (414) 335-2995
E-MAIL: PATRICK@PATRICKG.COM
CONTACT: JEREMY NELSON

CONSULTANTS:

ENGELSON ELLISON & ASSOCIATES, INC.
2625 UNIVERSITY AVENUE, STE 200
ST. PAUL, MN 55114-1131
PHONE: (612) 832-2300
FAX: (612) 832-2387

ADVANCED STRUCTURAL TECHNOLOGIES, INC.
2526 E. 82ND STREET, STE 135
TREMPEALEAU, MN 56470
PHONE: (507) 824-8302
FAX: (507) 864-8960

CALDWELL ENGINEERING, LLC.
1015 VICKY ROAD
MADISON, WI 53719
PHONE: (608) 638-0444
FAX: (608) 638-0448

BLAIR LANDSCAPING
3330 CANTON PLACE
MADISON, WI 53704
PHONE: (608) 255-1100

SCALE:

PATRICK G. BLEZ, ARCHITECT

13-118-07
DATE REVISION: 6-2014
REV. NO. 1

CBL PROPERTIES
EAST TOWNE MALL
85 EAST TOWNE MALL
MADISON, WI 53704

SHELL BUILDING

SHEET TITLE:
UTILITY PLAN

REVISIONS:

NO.	DATE	BY

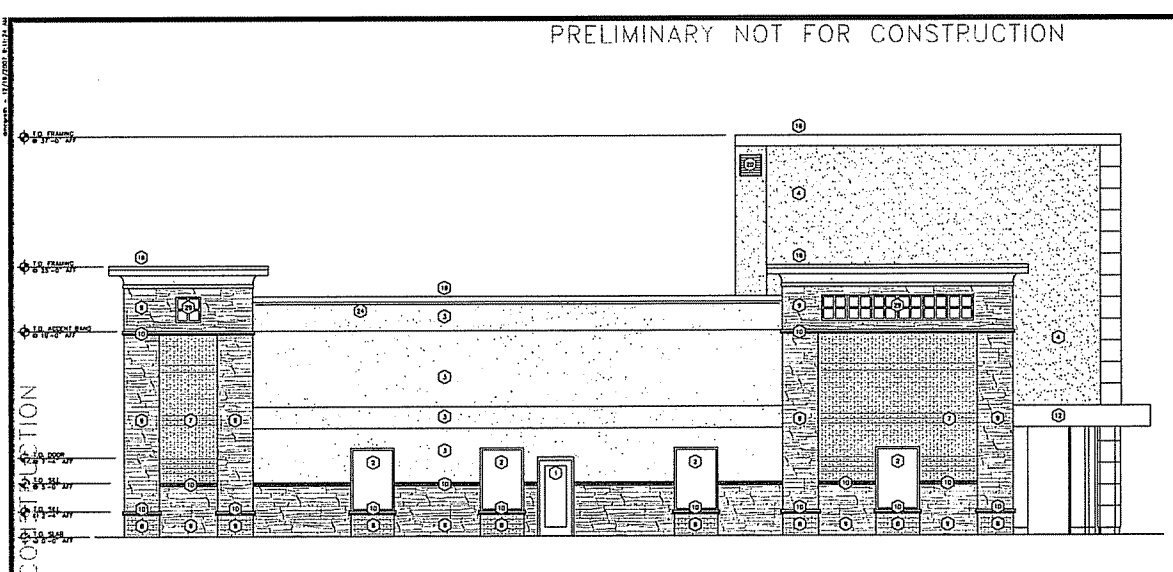
PROJECT NO. 0718401
DRAWN BY

C300

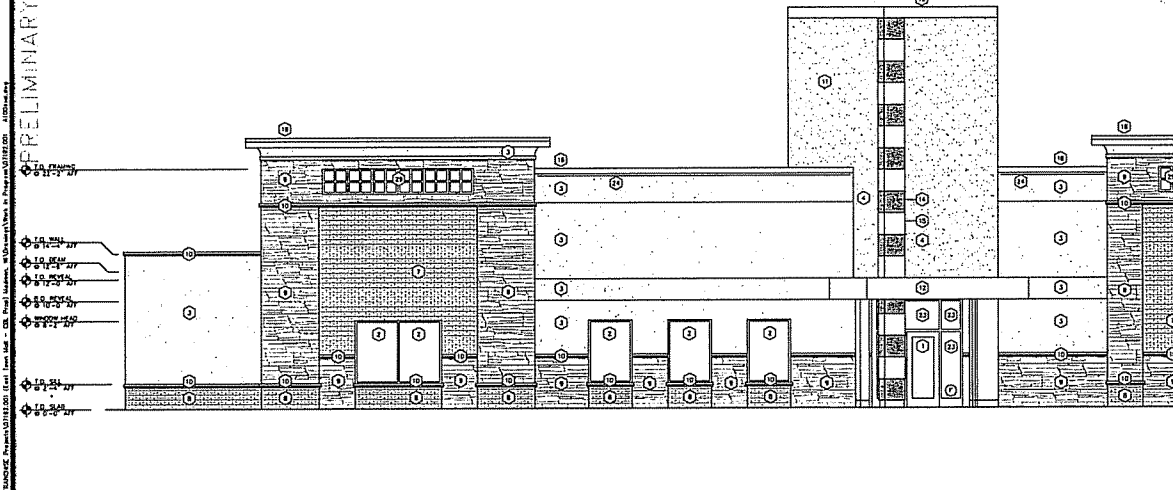
SHEET 1 OF 10
COPYRIGHT PATRICK G. BLEZ, 04 2007

PRELIMINARY NOT FOR CONSTRUCTION

PRELIMINARY NOT FOR CONSTRUCTION



ELEVATION
1159 1/4"=1'-0"



ELEVATION
1159 1/4"=1'-0"

PRELIMINARY NOT FOR CONSTRUCTION

FIRE NOTES

1. PROVIDE ADDRESS DIRECTORY MARK TO MAJOR HIGHWAYS. CLEARLY IDENTIFY BUILDING WITH DESIGNATION 1ST FLOOR WITH 1" THICKS MOUNTED ON CONTRASTING BACKGROUND. PLACE DESIGNATION ON ALL 4 SIDES OF EACH BUILDING.
2. ADDRESS SIGN LOCATION SHALL BE PLANNED, MOBILE AND LEGIBLE FROM FRONTAGE OR MAIN ROAD - MIN 2" HIGH (EDGEMAN HEIGHT, LOCATION AND QUANTITY WITH LOCAL FIRE MARSHAL.)

GENERAL NOTES

1. FINISH DRAWINGS AND DESIGN ARE UNDER SEPARATE PERMIT AND NOT A PART OF THIS PLAN REVIEW.
2. BUILDING SIGNAGE AND ANY REQUIRED BUILDING SIGNAGE IS UNDER SEPARATE PERMIT AND NOT A PART OF THIS PLAN REVIEW.
3. MOUNT SIGN ON 6"-4" MINIMUM ABOVE GRADE, EDGEMAN LOCATION AND QUANTITY WITH LOCAL FIRE MARSHAL.

KEY NOTES

<p>1 STONEFRONT-MADE KAMBER OR EQUIVALENT. SEE 4311</p> <p>2 WOODWORK-MADE KAMBER OR EQUIVALENT. SEE 4311</p> <p>3 DRIFT OPS-COLOR ACCENT. ACCENT. FINISH SAND PERLE. MFR. EPS. PHONE: 800-236-7732. ALL SITE STRATEGIC ACCENT. MOORE ACCENT. PHONE: 888-788-3437</p> <p>4 DRIFT OPS-COLOR SOCIAL BUTTERFLY. FINISH SAND PERLE. MFR. EPS. PHONE: 800-236-7732. ALL SITE STRATEGIC ACCENT. SOCIAL BUTTERFLY. PHONE: 888-788-3437</p> <p>5 DRIFT OPS-COLOR CORVALL. FINISH SAND PERLE. MFR. EPS. PHONE: 800-236-7732. ALL SITE STRATEGIC ACCENT. CORVALL. PHONE: 888-788-3437</p> <p>6 DRIFT OPS-COLOR SANDWOOD. FINISH SAND PERLE. MFR. EPS. PHONE: 800-236-7732. ALL SITE STRATEGIC ACCENT. SANDWOOD. PHONE: 888-788-3437</p> <p>7 BRICK WOOD-CLAD CERAMIC. CORAL SAND. PHONE: 783-542-1378</p> <p>8 BRICK WOOD-CLAD CERAMIC. CORAL SAND. PHONE: 783-542-1378</p> <p>9 BRICK WOOD-CLAD CERAMIC. CORAL SAND. PHONE: 783-542-1378</p> <p>10 METAL ELIMINATED SUP. SUPPLIED & INSTALLED BY OWNER. SEE 12/4101</p> <p>11 PREFINISHED ALUMINUM COMPOSITE PANELS. COLOR-SILVER METALLIC. MFR. USA-CLAD. PHONE: 800-894-8888</p> <p>12 FABRIC FINISH-COLOR. BLACK W/ YELLOW SQUARES. MFR. SIMONELLA. SIZE 42/4100</p> <p>13 PREFINISHED ALUMINUM COMPOSITE PANELS-COLOR. BLACK. MFR. USA-CLAD. PHONE: 800-894-8888</p>	<p>14 PREFINISHED ALUMINUM COMPOSITE PANELS-COLOR. SILVER. MFR. USA-CLAD. PHONE: 800-894-8888</p> <p>15 PREFINISHED METAL CAP FLASHING-COLOR. SILVER METALLIC. MFR. USA-CLAD. PHONE: 1-800-994-0888</p> <p>16 WINDOW SPOKE/MOMENT LIGHT. SEE ELECTRICAL DRAWINGS.</p> <p>17 DOWNPOUT & SCULPER-COLOR. SILVER METALLIC. MFR. USA-CLAD. PHONE: 800-894-8888</p> <p>18 SPRING LIGHTS. SEE ELECTRICAL DRAWINGS.</p> <p>19 24"X24" VENT BY INSECT SCREEN. AIRLINE LEAVES. MODEL. AVAILABLE PART TO MATCH OPS.</p> <p>20 MAIL ROOM. SEE 4312.</p> <p>21 NOT USED.</p> <p>22 NOT USED.</p> <p>23 ONE STRIP OF LED LIGHTING PROVIDED BY SIGNAGE MANUFACTURER. ELECTRICAL CONTRACTOR TO COMPLETE POWER REQUIREMENTS AND LOCATION OF BOXES AND TRANSFORMERS WITH SIGN MANUFACTURER.</p> <p>24 PAINT RAIL. SEE 4150.</p> <p>25 SAND CANOPY-PROVIDE CUTTER AND DOWNPOUT. SEE 4150</p> <p>26 NOT USED.</p> <p>27 MAIL RACK. SEE ELECTRICAL DRAWINGS.</p> <p>28 CLEAR STORY UNLAMINATED BRACKET CLASPIC.</p> <p>29 ROOF BLEND-OUT FOR ILLUMINATED CLEAR STORY SIGNING.</p> <p>30 6" DIA-MFR. MASTERLOOK.</p>
---	--

PATRICK G. BLEES, ARCHITECT
 218 N. 2ND ST., SUITE 301
 MINNEAPOLIS, MN 55401
 PHONE: (612) 538-5677
 FAX: (612) 538-2375
 E-MAIL: info@patrickg.com
 CONTACT: JEREMY NELSON

CONSULTANTS:

EDGEMAN ELLISON & ASSOCIATES, INC.
 218 UNIVERSITY AVENUE, STE 200
 ST. PAUL, MN 55114-1231
 PHONE: (612) 532-2500
 FAX: (612) 632-2387

ADVANCED STRUCTURAL TECHNOLOGIES, INC.
 323 E. 2ND STREET, STE 235
 BLOOMINGTON, MN 55415
 PHONE: (612) 634-8222
 FAX: (612) 634-8492

CALKINS ENGINEERING, LLC.
 5015 WISCONSIN ROAD
 MADISON, WI 53719
 PHONE: (608) 839-0444
 FAX: (608) 838-0445

BLAIR LANDSCAPING
 3000 EASTWYCK PLACE
 MADISON, WI 53704
 PHONE: (608) 253-1120

DATE ISSUED: 12-18-07
 REV. NO.: A-1004

SHELL BUILDING

SHEET TITLE:
 EXTERIOR ELEVATIONS

REVISIONS:

NO.	DATE	BY

PROJECT NO: 07182.001
 DRAWN BY: DMI

A100

SHEET 23 OF 40
 COPYRIGHT PATRICK G. BLEES, 04 2007

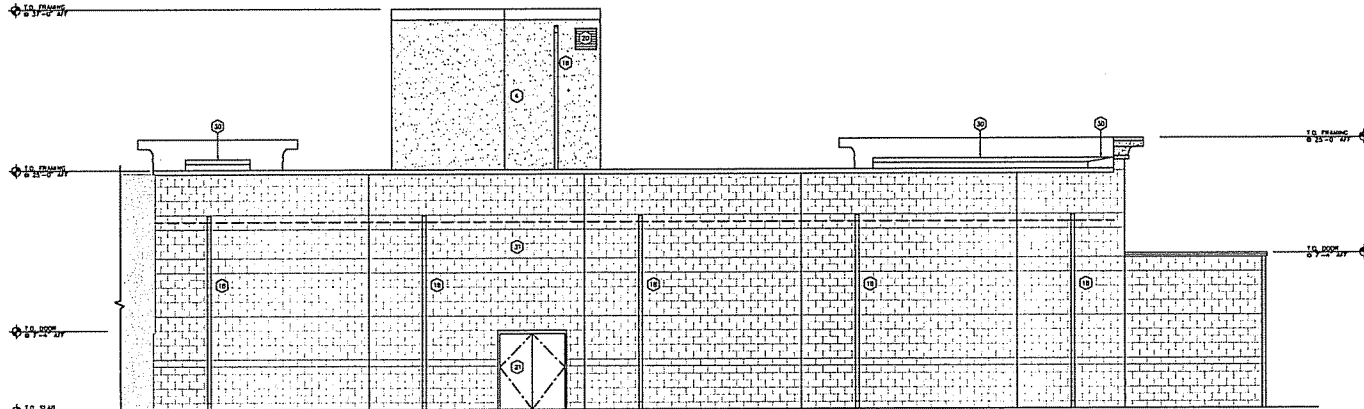
PRELIMINARY NOT FOR CONSTRUCTION

PRELIMINARY NOT FOR CONSTRUCTION

PRELIMINARY NOT FOR CONSTRUCTION

- FIRE NOTES**
1. FIREWORKS ADDRESS ONLY KEY TO BUILDING ELEMENTS. CLEARLY IDENTIFY BUILDINGS WITH DISCRETELY SET HIGH WIND 1" STRIPES MOUNTED ON CONTRASTING BACKGROUND. PLACE OBSERVERS ON ALL 4 SIDES OF EACH BUILDING.
 2. ADDRESS SIGN LOCATION SHALL BE PLANNED WHERE AND LEGIBLE FROM PRIMARY OR MAIN ROAD - MIN 2' HIGH (CONFORM WITH LOCAL AND QUARTY WITH LOCAL FIRE MARSHAL.)
- GENERAL NOTES**
1. FINISH DRAWINGS AND DESIGN ARE UNDER SEPARATE PERMIT AND NOT A PART OF THIS PLAN REVIEW.
 2. BUILDING SIGNAGE AND ANY REQUIRED BUILDING SIGNAGE IS UNDER SEPARATE PERMIT AND NOT A PART OF THIS PLAN REVIEW.
 3. MEANS PAGE SIZE 8 1/2" MINIMUM ABOVE GRADE. CENTRAL LOCATION AND QUANTITY WITH LOCAL FIRE MARSHAL.
- KEY NOTES**
- | | |
|--|---|
| ① STYROFOAM-INSULATED CONCRETE PANELS-COLOR 4212 | ⑩ FINISHED ALUMINUM COMPOSITE PANELS-COLOR: BONE WHITE W/F: UVA-GLAZ. PHONE: 800-854-4884 |
| ② WINDOW-W/FR. KAMBER OR EQUIVALENT. SEE 4212 | ⑪ FINISHED METAL CAP FLASHING-COLOR: SILVER METALLIC. HANDED 1/4" GLAZ. PHONE: 800-991-8866 |
| ③ DRIFT EPS-COLOR: AGGREG. ACCENT. FINISH SAND PERLE. W/F: EPS. PHONE: 800-336-7722. ALL 5/8" STRATIG. ACCENTS: AGGREG. ACCENT. PHONE: 888-788-3437 | ⑫ DRUMMER IMPACT/HOMEWORK LIGHT. SEE ELECTRICAL DRAWINGS. |
| ④ DRIFT EPS-COLOR: SW SOCIAL. BUTTERFLY. FINISH SAND PERLE. W/F: EPS. PHONE: 800-336-7722. ALL 5/8" STRATIG. ACCENTS: SOCIAL. BUTTERFLY. PHONE: 888-788-3437 | ⑬ DOWNPOUT & SCUPPER-COLOR: SILVER METALLIC. W/F: UVA-GLAZ. PHONE: 800-854-4884 |
| ⑤ DRIFT EPS-COLOR: CANVAS. FINISH: SANDBLAST. W/F: EPS. PHONE: 800-336-7722. ALL 5/8" STRATIG. ACCENTS: CANVAS. PHONE: 888-788-3437 | ⑭ FINISH LIGHTS. SEE ELECTRICAL DRAWINGS. |
| ⑥ DRIFT EPS-COLOR: SANDLEWOOD. BONE. FINISH SAND PERLE. W/F: EPS. PHONE: 800-336-7722. ALL 5/8" STRATIG. ACCENTS: BONE. BUTTERFLY. PHONE: 888-788-3437 | ⑮ 24" X 24" VENT W/ INSET CORNER. ALUM. LEVERS. BONE. ASSEMBLY PART TO MATCH EPS. |
| ⑦ FINISH WHEEL-CLOUD CERAMICS. CORAL SAND. PHONE: 763-143-1348. ALL 3/8" CITY BRICK. TREATED FINE ART. | ⑯ HALL DOOR. SEE 4212. |
| ⑧ BACK WHEEL-CLOUD CERAMICS. CORAL SAND. MODULAR. PHONE: 763-143-1348. ALL 3/8" CITY BRICK. TREATED FINE ART. | ⑰ NOT USED. |
| ⑨ CALIBRED STONE WOODER "SQUARE" TO MATCH EXISTING HALL FINISH. | ⑱ WINDOW BLINDS BY BWH WINDOW. |
| ⑩ PRECAST SILL-WATERPROOF. CORAL SAND. MODULAR. PHONE: 813-433-3911. ALL 3/8" CITY BRICK. TREATED FINE ART. | ⑳ ONE STORY W/ LED LIGHTING PROVIDED BY SOURCE. PHONE: 763-143-1348. CONDUCTOR TO CONFORM WITH REQUIREMENTS AND LOCATION OF BOXES AND TRANSFORMERS WITH SOG WINDOW. |
| ⑪ METAL ILLUMINATED SIGN. SUPPLIED & INSTALLED BY OWNER. SEE 42410 | ㉑ PAINT RAL. SEE 4210. |
| ⑫ FINISHED ALUMINUM COMPOSITE PANELS-COLOR: SILVER METALLIC. W/F: UVA-GLAZ. PHONE: 800-854-4884 | ㉒ RAIN CANOPY-PROVIDE OUTER AND DOWNPOUT. SEE 4210. |
| ⑬ FABRIC FINISH-COLOR: BLACK W/ YELLOW SQUARES W/F: BAMBULA. SEE 42410 | ㉓ NOT USED. |
| ⑭ FINISHED ALUMINUM COMPOSITE PANELS-COLOR: BLACK. W/F: UVA-GLAZ. PHONE: 800-854-4884 | ㉔ HALL PAINT. SEE ELECTRICAL DRAWINGS. |
| | ㉕ CLEAR STORY ILLUMINATED BACKLIT EDGING. |
| | ㉖ SIGN BACK-OUT FOR ILLUMINATED CLEAR STORY LIGHTING. |
| | ㉗ 8" DIA-W/FR. WASTEWATER. |

PRELIMINARY NOT FOR CONSTRUCTION



PRELIMINARY NOT FOR CONSTRUCTION

PATRICK G. BLEES
 ARCHITECT
 218 N. 2ND ST., SUITE 301
 MINNEAPOLIS, MN 55401
 PHONE: (612) 335-6977
 FAX: (612) 335-5913
 E-MAIL: info@patrickgblees.com
 CONTACT: JEREMY NELSON

CONSULTANTS:
 ERICKSON ELLISON & ASSOCIATES, INC.
 225 UNIVERSITY AVENUE, STE 200
 ST. PAUL, MN 55114-1231
 PHONE: (612) 832-2500
 FAX: (612) 832-1997
 ADVANCED STRUCTURAL TECHNOLOGIES, INC.
 212 E. 8TH STREET, STE 233
 EDGEMONT, MN 55413
 PHONE: (612) 834-8882
 FAX: (612) 834-9690
 CARLINS ENGINEERING, LLC.
 5010 VOICES ROAD
 MADISON, WI 53719
 PHONE: (608) 839-0444
 FAX: (608) 839-0443

BLAIR LANDSCAPING
 3030 CATERWAY PLACE
 MADISON, WI 53718
 PHONE: (608) 255-1830

DATE: 12-18-07
 SCALE: A-9014

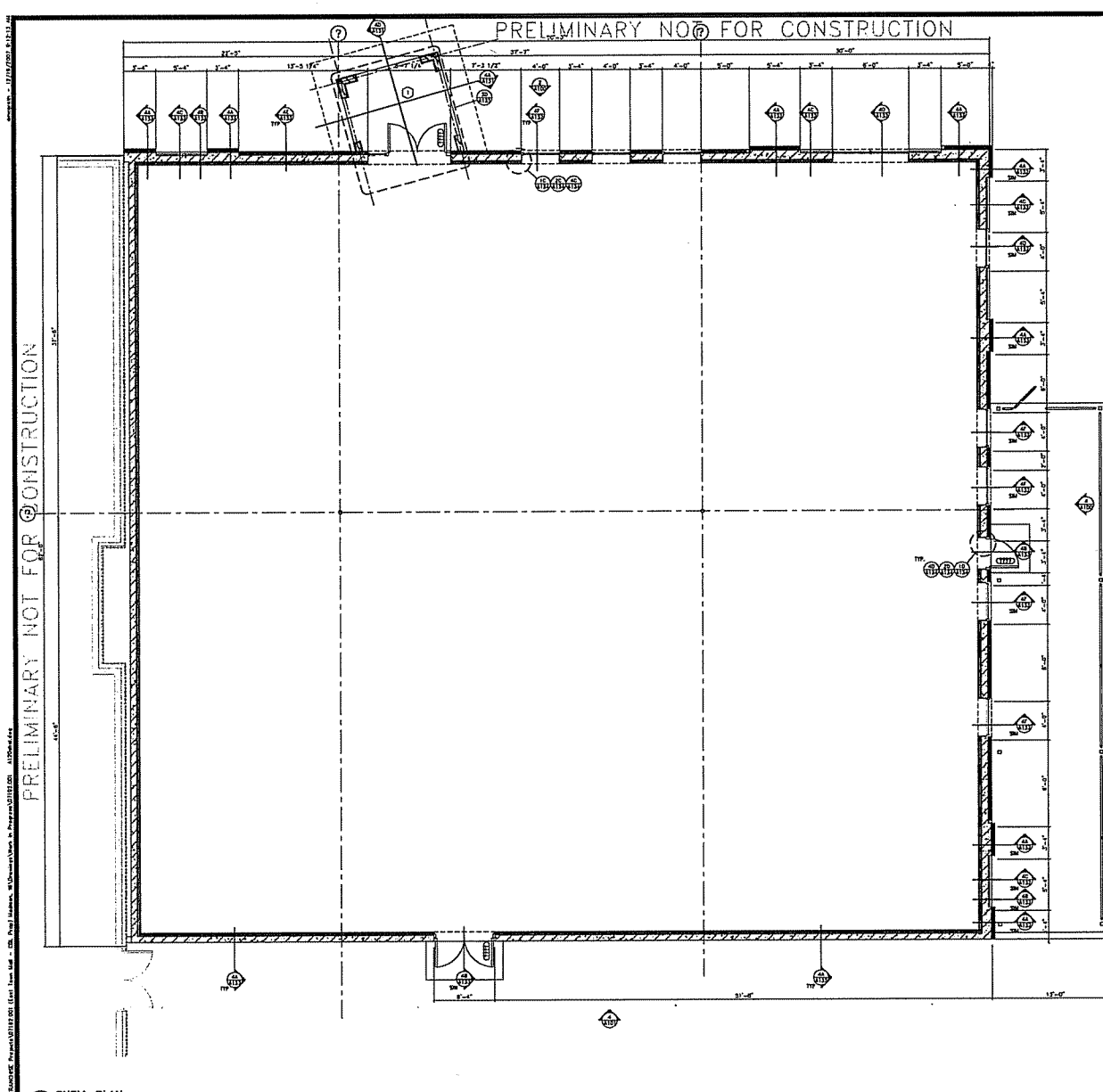
CBL PROPERTIES
 EAST TOWNE MALL
 89 EAST TOWNE MALL
 MADISON, WI 53704

SHELL BUILDING
 SHEET TITLE:
 EXTERIOR ELEVATIONS

REVISIONS:

NO.	DATE	BY

PROJECT NO: 07182.001
 DRAWN BY:
A100
 SHEET 23 OF 40
 COPYRIGHT PATRICK G. BLEES, AIA 2007



1. SHEET TITLE: SHELL CONSTRUCTION PLAN
 2. SHEET NO.: A120
 3. SHEET OF NO.: 1 OF 1
 4. PROJECT NO.: 07192.001
 5. DRAWN BY: [blank]
 6. DATE: [blank]
 7. BY: [blank]

GENERAL NOTES

1. FIELD HENRY GLASS BUILDING DIMENSIONS AND COLUMN LOCATIONS. HEIGHT DISCREPANCIES TO ARCHITECT PLEASE TO BEHINDING OF HENRY CONSTRUCTION.
2. EXTERIOR BUILDING DIMENSIONS ARE TO FACE OF BRICK OR MASONRY OPENING.
3. CARRY BRACING SHELL EXPANSION JOINTS THROUGH INTERIOR FINISH MATERIALS.
4. HEIGHT OF WALLS ARE MEASURED FROM FLOOR SLAB.
5. HOLD METAL STUDS FROM WALL HEIGHT WALLS 1/2" SHORT OF EXISTING ROOF DECK TO ALLOW FOR EXISTENTIAL FINISH CROSS BRACING FOR STABILITY. DO NOT ATTACH METAL STUDS TO TOP FLATE METAL BRACK.
6. FINE MEAT STRUCTURAL WOOD MEMBERS PER AIAA STANDARDS.

KEY NOTES

1. CONCRETE STOOD, SEE STRUCTURAL DRAWINGS
2. GLASS SPANREL GLASS, FIELD HENRY SIZES, OWNER AND LANDLORD TO APPROVE COLOR.
3. LINE OF CANOPY ABOVE

PATRICK G. BLEES ARCHITECT
 218 W. 2ND ST., SUITE 301
 MANASSAS, VA 20108
 PHONE: (703) 336-8277
 FAX: (703) 336-2393
 E-MAIL: info@patrickgblees.com
 CONTACT: JEREMY WELTON

CONSULTANTS:
 ERICKSON ELLISON & ASSOCIATES, INC.
 2515 UNIVERSITY AVENUE, STE 200
 ST. PAUL, MN 55114-1321
 PHONE: (612) 833-2300
 FAX: (612) 833-2397
 ADVANCED STRUCTURAL TECHNOLOGIES, INC.
 218 G. KING STREET, STE 213
 ELKHARTON, VA 22425
 PHONE: (552) 854-3322
 FAX: (552) 854-9020
 CALKINS ENGINEERING, LLC.
 5010 VOICES ROAD
 MADISON, WI 53718
 PHONE: (608) 833-0444
 FAX: (608) 833-0443
 BLAIR LANDSCAPING
 2033 GARDEN PLACE
 MADISON, WI 53704
 PHONE: (608) 233-1820

SEAL

PATRICK G. BLEES, ARCHITECT

12-18-07
 DATE ISSUED: A-001A
 REC NO. [blank]

SHLL BUILDING

CBL PROPERTIES
 EAST TOWNE MALL
 89 EAST TOWNE MALL
 MADISON, WI 53704

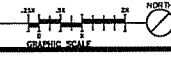
REVISIONS:

NO.	DATE	BY

PROJECT NO. 07192.001
 DRAWN BY: [blank]

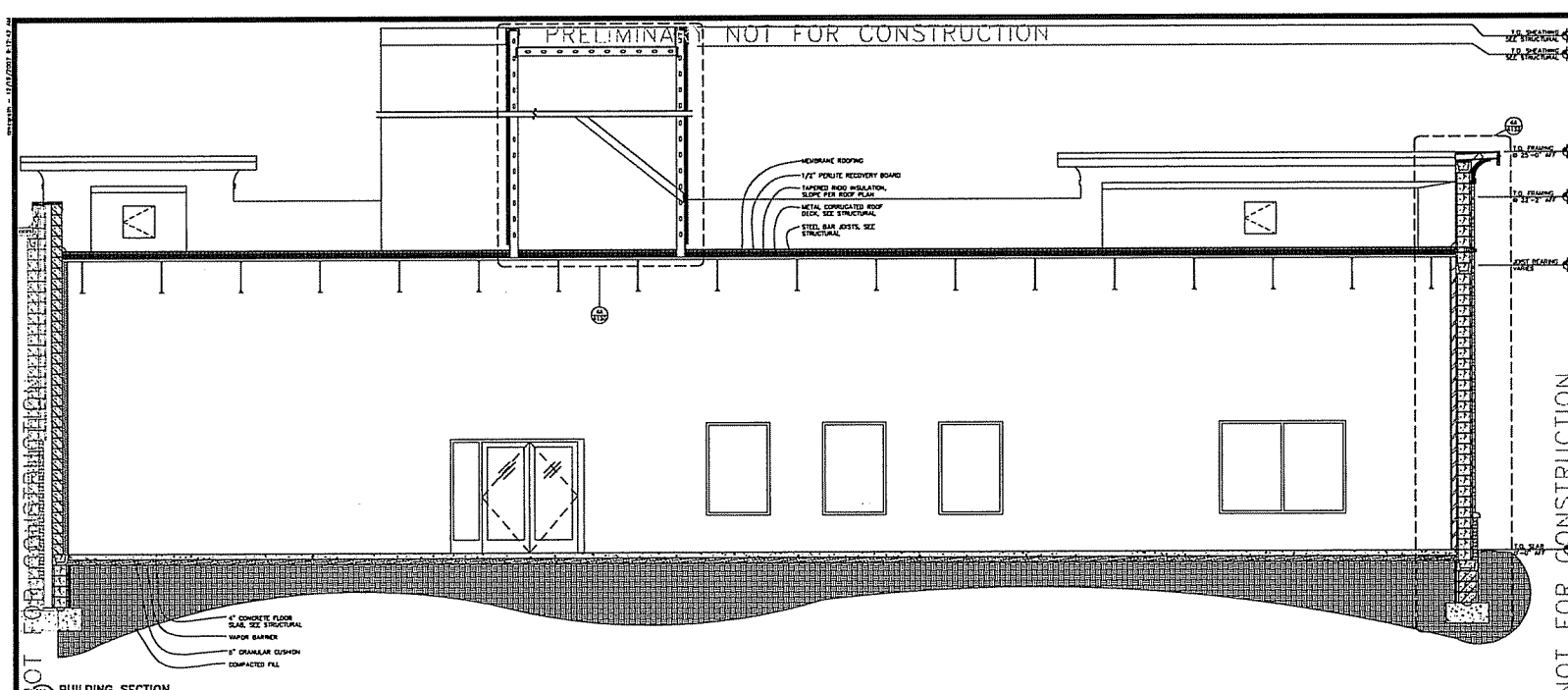
A120

SHEET 03 OF NO. [blank]
 COPYRIGHT PATRICK G. BLEES, INC. 2007

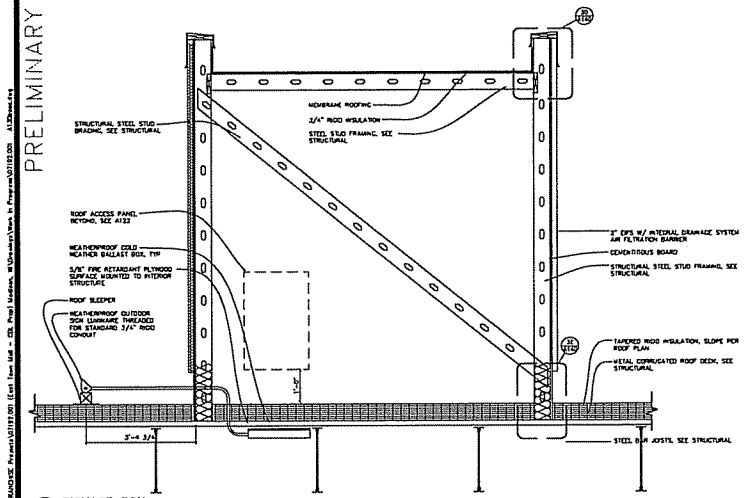


SHLL PLAN
 SCALE: 1/4"=1'-0"

PRELIMINARY NOT FOR CONSTRUCTION



BUILDING SECTION
SCALE: 3/8" = 1'-0"



SIGNAGE BOX
SCALE: 3/4" = 1'-0"

PRELIMINARY NOT FOR CONSTRUCTION

PATRICK C. BLEES ARCHITECT
218 N. 2ND ST., SUITE 301
MINNEAPOLIS, MN 55401
PHONE: (612) 335-8577
FAX: (612) 335-2855
E-MAIL: Info@denorch.com
CONTACT: JEREMY HELMSON

CONSULTANTS:
CHRISTOPHER ELLISON & ASSOCIATES, INC.
2515 BUREAU AVENUE, STE 200
ST. PAUL, MN 55114-1211
PHONE: (651) 831-2200
FAX: (651) 831-2377
ADVANCED STRUCTURAL TECHNOLOGY, INC.
715 E. KING STREET, STE 235
BLOOMINGTON, MN 55425
PHONE: (651) 854-3222
FAX: (651) 854-9992
CALKINS ENGINEERING, LLC
3010 WISNER ROAD
MADISON, WI 53718
PHONE: (608) 658-0444
FAX: (608) 634-0443
BLAIR LANDSCAPING
300 GATWAY PLACE
MADISON, WI 53704
PHONE: (608) 253-1920

12-19-07
DATE REVISION
A-0014
AEC NO.

SHELL BUILDING

SHEET TITLE:
EXTERIOR BUILDING SECTIONS AND DETAILS

NO.	DATE	BY

PROJECT NO: 07182.001
DRAWN BY:

A130
SHEET OF NO.
COPYRIGHT PATRICK C. BLEES, 04/2007

PRELIMINARY NOT FOR CONSTRUCTION

PRELIMINARY NOT FOR CONSTRUCTION

