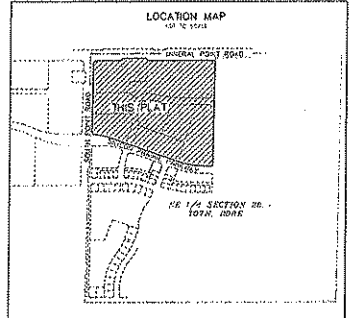
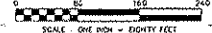


SILICON PRAIRIE™ COMMUNITY PLAT

OUTLOT 15, CARDINAL GLENN AS RECORDED IN VOLUME 58-083A OF PLATS, ON PAGES 421-425, AS DOCUMENT NUMBER 4089593, DANE COUNTY REGISTRY, LOCATED IN THE NORTHWEST QUARTER OF THE NORTH-EAST QUARTER OF SECTION 28, TOWNSHIP 07 NORTH, RANGE 08 EAST, CITY OF MADISON, DANE COUNTY, WISCONSIN



GRID NORTH
 DISTANCES ARE MEASURED TO THE NEAREST HUNDRETH OF A FOOT
 UNLESS OTHERWISE NOTED

LEGEND

- 3/4" SOLID WHEN ROD FOUND
- 1/4" SOLID WHEN ROD FOUND
- 1/2" x 20" SOLID WHEN RE-ROD SET, OR 4.50 DIA. W/ 6000 CONCRETE BARRER WITH 3/4" x 1/4" SOLID WHEN ROD FOUND, OR 1.50 DIA.

UTILITY EASEMENTS, NO PORTS OR BURIED CABLES ARE TO BE PLACED WITHIN THE INSTALLATION UNLESS OTHERWISE SHOWN. EXCEPT AS NOTED, THE DEPTH OF A UTILITY EASEMENT IS 4 FEET OR 6 FEET FROM THE CENTERLINE OF THE UTILITY EASEMENT AS SHOWN FOR THE USE OF PUBLIC UTILITIES AND PRIVATE PUBLIC UTILITIES UNLESS OTHERWISE NOTED.

() UNDESIGNED REFERENCED AS

DISTANCES ARE MEASURED TO THE NEAREST HUNDRETH OF A FOOT

CURVE DATA

NUMBER	STARTING POINT	ENDING POINT	CHORD BEARING	TANGENT BEARING	CHORD DISTANCE	TANGENT DISTANCE
CA	001.00	002.00	N 25°00'00" W	N 60°00'00" W	100.00	173.205
CB	002.00	003.00	N 25°00'00" W	N 60°00'00" W	100.00	173.205
CC	003.00	004.00	N 25°00'00" W	N 60°00'00" W	100.00	173.205
CD	004.00	005.00	N 25°00'00" W	N 60°00'00" W	100.00	173.205
CE	005.00	006.00	N 25°00'00" W	N 60°00'00" W	100.00	173.205
CF	006.00	007.00	N 25°00'00" W	N 60°00'00" W	100.00	173.205
CG	007.00	008.00	N 25°00'00" W	N 60°00'00" W	100.00	173.205
CH	008.00	009.00	N 25°00'00" W	N 60°00'00" W	100.00	173.205
CI	009.00	010.00	N 25°00'00" W	N 60°00'00" W	100.00	173.205
CJ	010.00	011.00	N 25°00'00" W	N 60°00'00" W	100.00	173.205
CK	011.00	012.00	N 25°00'00" W	N 60°00'00" W	100.00	173.205
CL	012.00	013.00	N 25°00'00" W	N 60°00'00" W	100.00	173.205
CM	013.00	014.00	N 25°00'00" W	N 60°00'00" W	100.00	173.205
CN	014.00	015.00	N 25°00'00" W	N 60°00'00" W	100.00	173.205
CO	015.00	016.00	N 25°00'00" W	N 60°00'00" W	100.00	173.205
CP	016.00	017.00	N 25°00'00" W	N 60°00'00" W	100.00	173.205
CQ	017.00	018.00	N 25°00'00" W	N 60°00'00" W	100.00	173.205
CR	018.00	019.00	N 25°00'00" W	N 60°00'00" W	100.00	173.205
CS	019.00	020.00	N 25°00'00" W	N 60°00'00" W	100.00	173.205
CT	020.00	021.00	N 25°00'00" W	N 60°00'00" W	100.00	173.205
CU	021.00	022.00	N 25°00'00" W	N 60°00'00" W	100.00	173.205
CV	022.00	023.00	N 25°00'00" W	N 60°00'00" W	100.00	173.205
CW	023.00	024.00	N 25°00'00" W	N 60°00'00" W	100.00	173.205
CX	024.00	025.00	N 25°00'00" W	N 60°00'00" W	100.00	173.205
CY	025.00	026.00	N 25°00'00" W	N 60°00'00" W	100.00	173.205
CZ	026.00	027.00	N 25°00'00" W	N 60°00'00" W	100.00	173.205
CA	027.00	028.00	N 25°00'00" W	N 60°00'00" W	100.00	173.205
CB	028.00	029.00	N 25°00'00" W	N 60°00'00" W	100.00	173.205
CC	029.00	030.00	N 25°00'00" W	N 60°00'00" W	100.00	173.205
CD	030.00	031.00	N 25°00'00" W	N 60°00'00" W	100.00	173.205
CE	031.00	032.00	N 25°00'00" W	N 60°00'00" W	100.00	173.205
CF	032.00	033.00	N 25°00'00" W	N 60°00'00" W	100.00	173.205
CG	033.00	034.00	N 25°00'00" W	N 60°00'00" W	100.00	173.205
CH	034.00	035.00	N 25°00'00" W	N 60°00'00" W	100.00	173.205
CI	035.00	036.00	N 25°00'00" W	N 60°00'00" W	100.00	173.205
CJ	036.00	037.00	N 25°00'00" W	N 60°00'00" W	100.00	173.205
CK	037.00	038.00	N 25°00'00" W	N 60°00'00" W	100.00	173.205
CL	038.00	039.00	N 25°00'00" W	N 60°00'00" W	100.00	173.205
CM	039.00	040.00	N 25°00'00" W	N 60°00'00" W	100.00	173.205
CN	040.00	041.00	N 25°00'00" W	N 60°00'00" W	100.00	173.205
CO	041.00	042.00	N 25°00'00" W	N 60°00'00" W	100.00	173.205
CP	042.00	043.00	N 25°00'00" W	N 60°00'00" W	100.00	173.205
CQ	043.00	044.00	N 25°00'00" W	N 60°00'00" W	100.00	173.205
CR	044.00	045.00	N 25°00'00" W	N 60°00'00" W	100.00	173.205
CS	045.00	046.00	N 25°00'00" W	N 60°00'00" W	100.00	173.205
CT	046.00	047.00	N 25°00'00" W	N 60°00'00" W	100.00	173.205
CU	047.00	048.00	N 25°00'00" W	N 60°00'00" W	100.00	173.205
CV	048.00	049.00	N 25°00'00" W	N 60°00'00" W	100.00	173.205
CW	049.00	050.00	N 25°00'00" W	N 60°00'00" W	100.00	173.205
CX	050.00	051.00	N 25°00'00" W	N 60°00'00" W	100.00	173.205
CY	051.00	052.00	N 25°00'00" W	N 60°00'00" W	100.00	173.205
CZ	052.00	053.00	N 25°00'00" W	N 60°00'00" W	100.00	173.205
CA	053.00	054.00	N 25°00'00" W	N 60°00'00" W	100.00	173.205
CB	054.00	055.00	N 25°00'00" W	N 60°00'00" W	100.00	173.205
CC	055.00	056.00	N 25°00'00" W	N 60°00'00" W	100.00	173.205
CD	056.00	057.00	N 25°00'00" W	N 60°00'00" W	100.00	173.205
CE	057.00	058.00	N 25°00'00" W	N 60°00'00" W	100.00	173.205
CF	058.00	059.00	N 25°00'00" W	N 60°00'00" W	100.00	173.205
CG	059.00	060.00	N 25°00'00" W	N 60°00'00" W	100.00	173.205
CH	060.00	061.00	N 25°00'00" W	N 60°00'00" W	100.00	173.205
CI	061.00	062.00	N 25°00'00" W	N 60°00'00" W	100.00	173.205
CJ	062.00	063.00	N 25°00'00" W	N 60°00'00" W	100.00	173.205
CK	063.00	064.00	N 25°00'00" W	N 60°00'00" W	100.00	173.205
CL	064.00	065.00	N 25°00'00" W	N 60°00'00" W	100.00	173.205
CM	065.00	066.00	N 25°00'00" W	N 60°00'00" W	100.00	173.205
CN	066.00	067.00	N 25°00'00" W	N 60°00'00" W	100.00	173.205
CO	067.00	068.00	N 25°00'00" W	N 60°00'00" W	100.00	173.205
CP	068.00	069.00	N 25°00'00" W	N 60°00'00" W	100.00	173.205
CQ	069.00	070.00	N 25°00'00" W	N 60°00'00" W	100.00	173.205
CR	070.00	071.00	N 25°00'00" W	N 60°00'00" W	100.00	173.205
CS	071.00	072.00	N 25°00'00" W	N 60°00'00" W	100.00	173.205
CT	072.00	073.00	N 25°00'00" W	N 60°00'00" W	100.00	173.205
CU	073.00	074.00	N 25°00'00" W	N 60°00'00" W	100.00	173.205
CV	074.00	075.00	N 25°00'00" W	N 60°00'00" W	100.00	173.205
CW	075.00	076.00	N 25°00'00" W	N 60°00'00" W	100.00	173.205
CX	076.00	077.00	N 25°00'00" W	N 60°00'00" W	100.00	173.205
CY	077.00	078.00	N 25°00'00" W	N 60°00'00" W	100.00	173.205
CZ	078.00	079.00	N 25°00'00" W	N 60°00'00" W	100.00	173.205
CA	079.00	080.00	N 25°00'00" W	N 60°00'00" W	100.00	173.205
CB	080.00	081.00	N 25°00'00" W	N 60°00'00" W	100.00	173.205
CC	081.00	082.00	N 25°00'00" W	N 60°00'00" W	100.00	173.205
CD	082.00	083.00	N 25°00'00" W	N 60°00'00" W	100.00	173.205
CE	083.00	084.00	N 25°00'00" W	N 60°00'00" W	100.00	173.205
CF	084.00	085.00	N 25°00'00" W	N 60°00'00" W	100.00	173.205
CG	085.00	086.00	N 25°00'00" W	N 60°00'00" W	100.00	173.205
CH	086.00	087.00	N 25°00'00" W	N 60°00'00" W	100.00	173.205
CI	087.00	088.00	N 25°00'00" W	N 60°00'00" W	100.00	173.205
CJ	088.00	089.00	N 25°00'00" W	N 60°00'00" W	100.00	173.205
CK	089.00	090.00	N 25°00'00" W	N 60°00'00" W	100.00	173.205
CL	090.00	091.00	N 25°00'00" W	N 60°00'00" W	100.00	173.205
CM	091.00	092.00	N 25°00'00" W	N 60°00'00" W	100.00	173.205
CN	092.00	093.00	N 25°00'00" W	N 60°00'00" W	100.00	173.205
CO	093.00	094.00	N 25°00'00" W	N 60°00'00" W	100.00	173.205
CP	094.00	095.00	N 25°00'00" W	N 60°00'00" W	100.00	173.205
CQ	095.00	096.00	N 25°00'00" W	N 60°00'00" W	100.00	173.205
CR	096.00	097.00	N 25°00'00" W	N 60°00'00" W	100.00	173.205
CS	097.00	098.00	N 25°00'00" W	N 60°00'00" W	100.00	173.205
CT	098.00	099.00	N 25°00'00" W	N 60°00'00" W	100.00	173.205
CU	099.00	100.00	N 25°00'00" W	N 60°00'00" W	100.00	173.205

SURVEYED FOR:
 NEW USE LLC
 555 DUNFORD DR, STE 222
 MADISON, WI 53716 24812

DATE: FEBRUARY 13, 2009
 PLAN: 236.11, 236.16, 236.20 AND 236.21(1) AND (2)

Burse
 surveying & engineering
 1400 E. Washington Ave., Suite 120
 Madison, WI 53705 608 250 9263
 Fax: 608 250 9266
 email: burse@burse.net
 www.burse-surveying.com

These are no objections to this plat with respect to Secs. 236.11, 236.16, 236.20 and 236.21(1) and (2), Wis Stats. as provided by s. 236.12, Wis. Stats.

Certified _____ 20____

Department of Administration

