

# Regina Hall - Addition and Alterations

945 Edgewood College Drive  
 Madison, WI 53711  
 2013.17.00

**January 22, 2014 - Plan Commission Submittal**



**DRAWING INDEX**

**GENERAL**

CD-01 COVER DRAWING

**CIVIL AND LANDSCAPE**

SITE SURVEY  
 C000 FIRST FLOOR PLAN & EXISTING SITE OVERLAY  
 C100 EROSION CONTROL & DEMOLITION PLAN  
 C200 SITE LAYOUT PLAN  
 C300 GRADING & DRAINAGE PLAN  
 C400 UTILITY PLAN  
 C500 LANDSCAPE PLAN  
 C600 DETAILS  
 C601 DETAILS  
 C602 DETAILS  
 C603 DETAILS

**ARCHITECTURAL**

D101 DEMO PLANS  
 A100 BASEMENT / FIRST FLOOR PLAN  
 A101 SECOND / THIRD FLOOR PLAN  
 A121 PENTHOUSE / ROOF PLAN  
 A201 BUILDING ELEVATIONS  
 A202 BUILDING ELEVATIONS

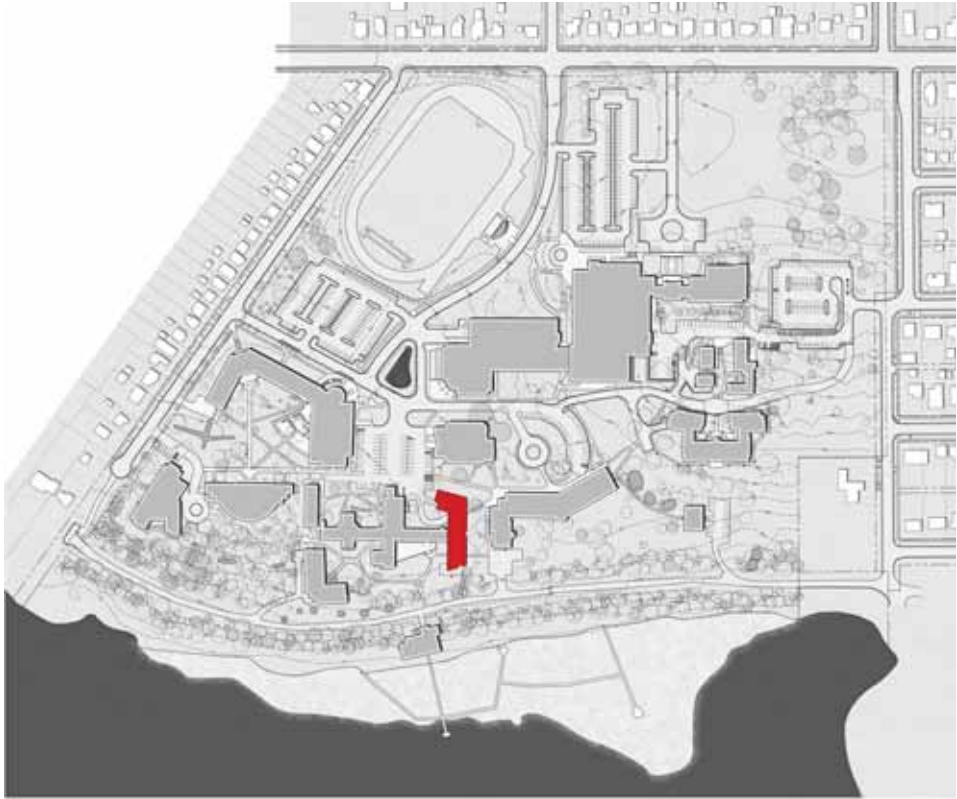
**ELECTRICAL**

E003 ELECTRICAL SITE PLAN

**Architect**

Potter Lawson  
 749 University Row, Suite 300  
 Madison, WI 53705  
 608.274.2741

**Consultants**



**PRELIMINARY**  
 NOT FOR CONSTRUCTION

Regina Hall -  
 Addition and  
 Alterations

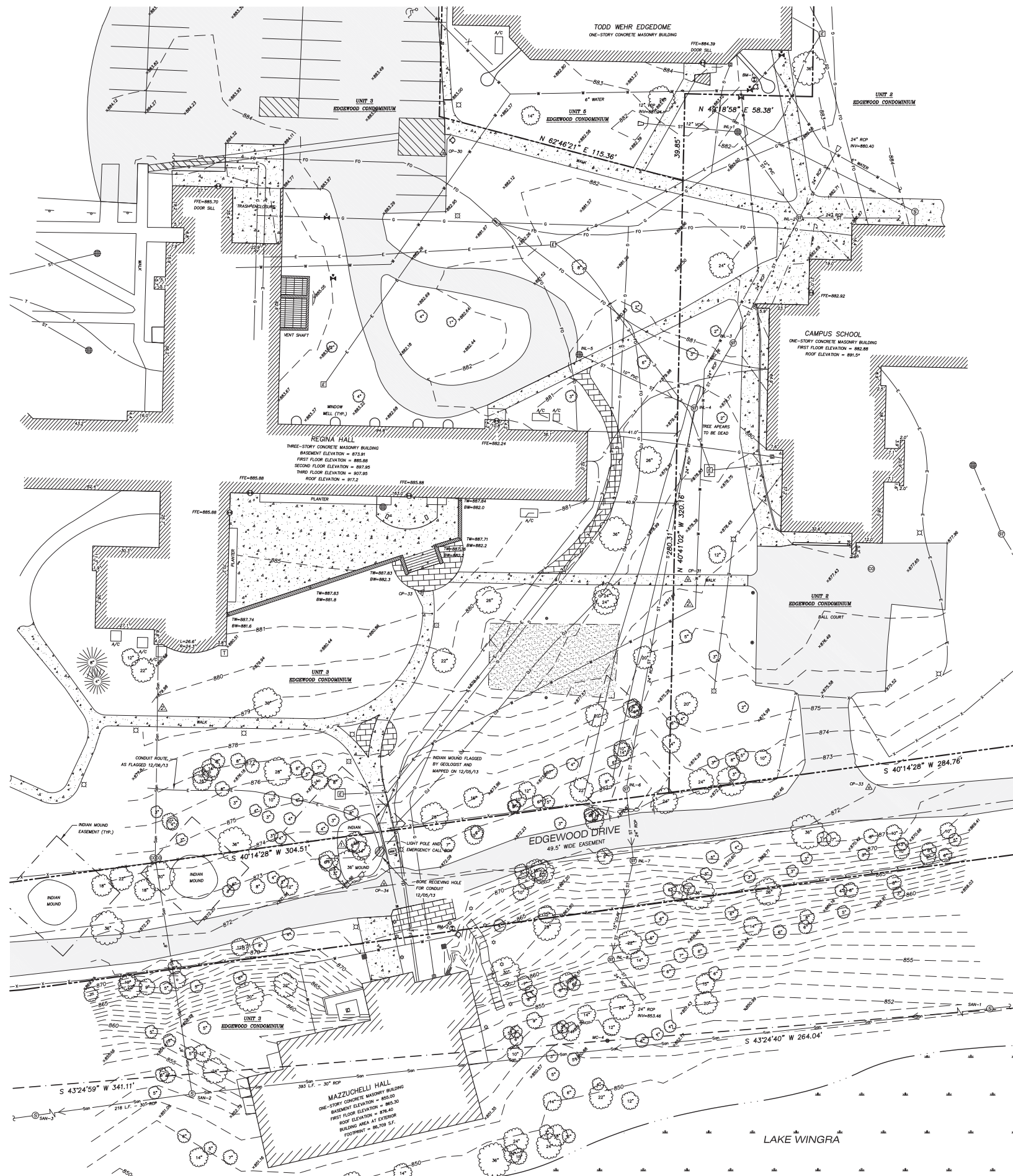
Edgewood College  
 Madison WI

2013.17.00

Date	Issuance/Revisions	Symbol
01/22/14	Plan Commission Submittal	

**Cover  
 Drawing**

**CD-01**



**LEGEND**

- ⊕ BENCHMARK
- ⊙ FINISHED FLOOR SHOT LOCATION (FFE)
- POST
- ⊖ SIGN
- ⊙ SANITARY MANHOLE
- ⊙ CLEAN OUT
- ⊙ HYDRANT
- ⊙ WATER OR GAS VALVE
- ⊙ STORM MANHOLE
- ⊙ ROUND CASTED INLET
- ⊙ SQUARE CASTED INLET
- ⊙ GAS REGULATOR/METER
- ⊙ ELECTRIC TRANSFORMER
- ⊙ AIR CONDITION UNIT
- ⊙ LIGHT POLE
- ⊙ VAULT
- ⊙ TELEPHONE PEDESTAL
- ⊙ HANDICAP PARKING
- PARCEL BOUNDARY
- EASEMENT LINE
- x-x- FENCE LINE
- GUARD OR SAFETY RAIL
- STONE WALL
- SHORE LINE
- SANITARY SEWER
- WATER LINE
- ST STORM SEWER
- NATURAL GAS
- UNDERGROUND ELECTRIC
- FIBER OPTIC
- UNDERGROUND TELEPHONE
- BUILDING
- 875--- INDEX CONTOUR
- 870--- INTERMEDIATE CONTOUR
- SPOT ELEVATION
- BITUMINOUS PAVEMENT
- CONCRETE PAVEMENT
- GRAVEL OR ROCK
- RETAINING WALL
- DISCONTINUED MAPPED PIPE LINE
- TOP OF WALL
- BOTTOM OF WALL

**NOTES**

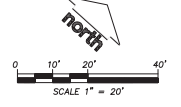
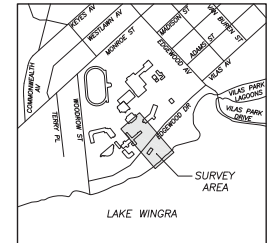
1. FIELD WORK PERFORMED BY JSD PROFESSIONAL SERVICES, INC. ON JULY 15, 2013.
2. THIS SURVEY AND MAP ARE BASED ON THE WISCONSIN COUNTY COORDINATE SYSTEM, (WCCS) DANE COUNTY.
3. ELEVATIONS ARE BASED ON THE NORTH AMERICAN VERTICAL DATUM OF 1988 (NAVD88). BENCHMARK IS A BRASS CAP IN CONCRETE MONUMENT MARKING THE NORTHWEST CORNER OF SECTION 27, TOWNSHIP 07 NORTH, RANGE 09 EAST, CITY OF MADISON, DANE COUNTY, WISCONSIN.
4. CONTOUR INTERVAL IS ONE FOOT.
5. SPOT ELEVATIONS SHOWN ALONG CURB AND GUTTER REFERENCE THE TOP BACK OF CURB.
6. SUBSURFACE UTILITIES AND FEATURES SHOWN ON THIS MAP HAVE BEEN APPROXIMATED BY LOCATING SURFICIAL FEATURES AND APPURTENANCES, LOCATING DIGGER'S HOTLINE FIELD MARKINGS AND BY REFERENCE TO UTILITY RECORDS AND MAPS. DIGGER'S HOTLINE TICKET NO. 20132616228.
7. BEFORE EXCAVATION, APPROPRIATE UTILITY COMPANIES SHOULD BE CONTACTED FOR EXACT LOCATION OF UNDERGROUND UTILITIES. CONTACT DIGGER'S HOTLINE AT 1.800.242.8511.
8. THE ACCURACY OF THE BENCHMARKS SHOWN ON THIS MAP SHALL BE VERIFIED BEFORE BEING UTILIZED. JSD PROFESSIONAL SERVICES, INC. DOES NOT WARRANT THE ACCURACY OF THESE BENCHMARKS.
9. THIS PARCEL IS SUBJECT TO ALL EASEMENTS AND AGREEMENTS, BOTH RECORDED AND UNRECORDED.
10. THIS PARCEL LIES IN ZONE 'X' OF OTHER AREAS. AREAS DETERMINED TO BE OUTSIDE THE 0.2% ANNUAL CHANCE FLOODPLAIN, PER PANEL 416 OF 850, MAP No. 55025CD4160, MAP REVISED JANUARY 02, 2009.

SANITARY SEWER MANHOLES				
Structure ID	Rim Elevation	Invert Elevation	Pipe Size	Pipe Type
SMW-1	852.39	NE 844.29	30"	RCP
		SW 844.29	30"	RCP
SMW-2	852.42	NE 844.55	30"	RCP
		NW 847.56	8"	RCP
		SW 844.55	30"	RCP
SMW-3	850.85	NE 844.71	30"	RCP
		NW 847.37	8"	RCP
		SW 844.68	30"	RCP

STORM SEWER INLETS				
Inlet ID	Rim Elevation	Invert Elevation	Pipe Size	Pipe Type
INL-1	881.67	SW 880.18	12"	CLAY
		E 880.18	12"	PVC
INL-2	882.79	W 878.25	12"	PVC
		N 877.64	24"	RCP
		NE 875.99	24"	RCP
		S 875.37	24"	RCP
INL-3	881.34	N 875.07	24"	RCP
		S 875.07	24"	RCP
INL-4	879.36	N 871.56	24"	RCP
		W 875.81	10"	PVC
		SE 871.71	24"	RCP
INL-5	880.90	E 879.56	10"	PVC
INL-6	870.67	NW 866.57	24"	RCP
		SE 866.57	24"	RCP
INL-7	870.64	NW 866.24	24"	RCP
		SE 865.44	15"	CLAY
INL-8	858.28	NW 855.28	15"	CLAY
		E 853.68	24"	RCP

BENCHMARKS		
Bench Mark	Elevation	Description
BM-1	854.62	Top Nut of Hydrant by Todd Wehr Edgedome
BM-2	872.81	Top Nut of Hydrant by Mazzuchelli Hall

CONTROL POINTS				
Control Monument	Northing	Easting	Elevation	Description
CP-30	476,734.117	811,150.562	883.05	MAG NAIL
CP-31	476,663.718	811,344.583	878.18	CUT CROSS
CP-32	476,577.779	811,277.835	881.58	CUT CROSS
CP-33	476,648.465	811,489.930	872.09	MAG NAIL
CP-34	476,467.097	811,354.367	871.98	MAG NAIL



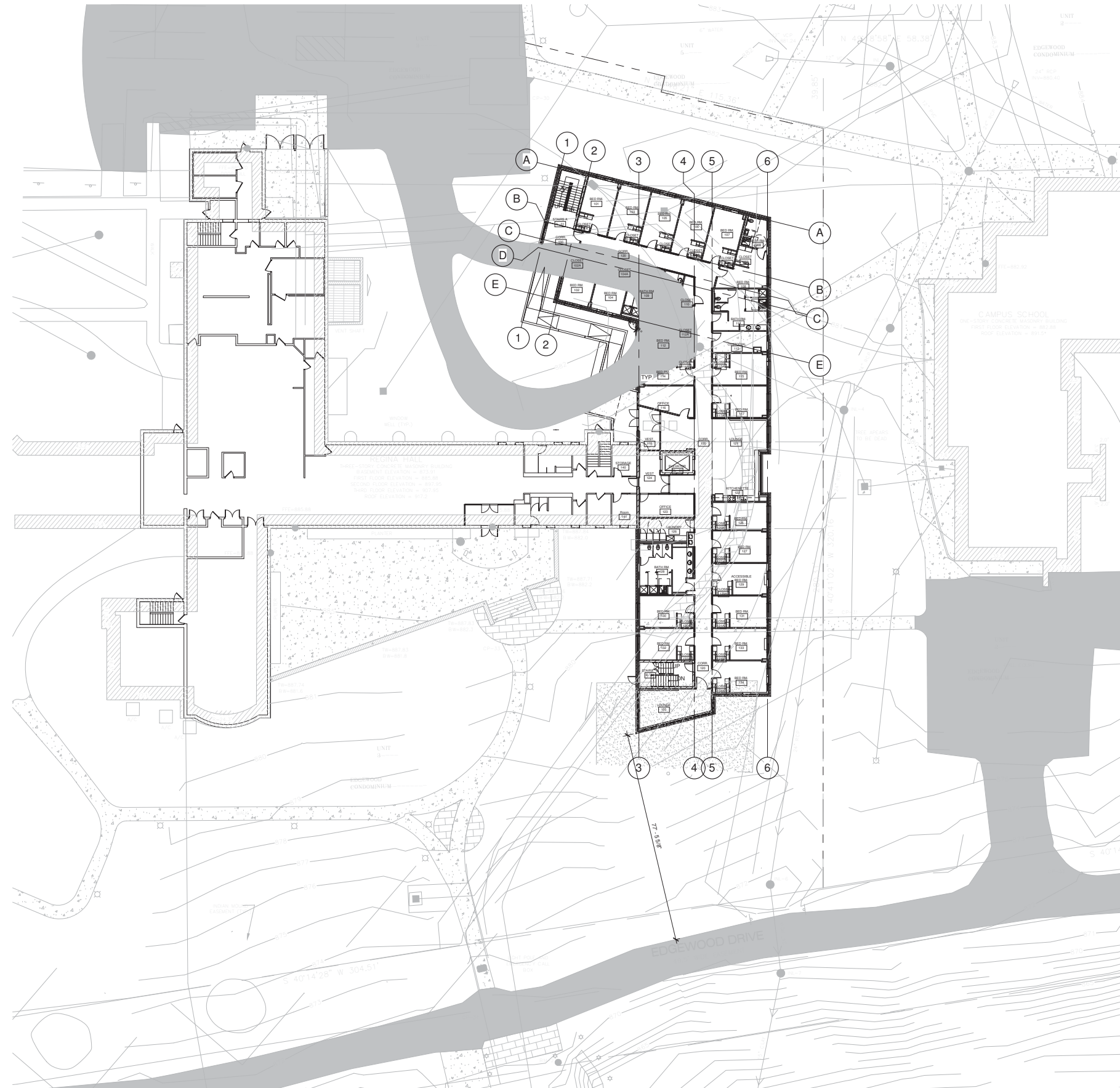
DATE	BY	DESCRIPTION
12/07/13	JSD	INDIAN WOUND FLAGGED CONDUIT ADDED
12/07/13	JSD	SANITARY SEWER AND WATERMAIN ADDED
07-16-2013	JK	DATE
		DATE
	HP/J	DATE
		DATE

**TOPOGRAPHIC AND UTILITY MAP**

PART OF THE FRACTIONAL NORTHWEST QUARTER OF SECTION 27, TOWNSHIP 07 NORTH, RANGE 09 EAST, CITY OF MADISON, DANE COUNTY, WISCONSIN.

**JSD Professional Services, Inc.**  
 Engineers • Surveyors • Planners  
 161 HORDON DRIVE, SUITE 101  
 VERONA, WISCONSIN 53593  
 PHONE: (608)948-5060

PROJECT NO: 13-5757  
 FILE NO: E-161  
 SURVEYED: RF  
 F.B. NO/PG: --  
 SHEET NO: 1 OF 1



Notes:

**PRELIMINARY**  
NOT FOR CONSTRUCTION

**Regina Hall -  
Addition and  
Alterations**

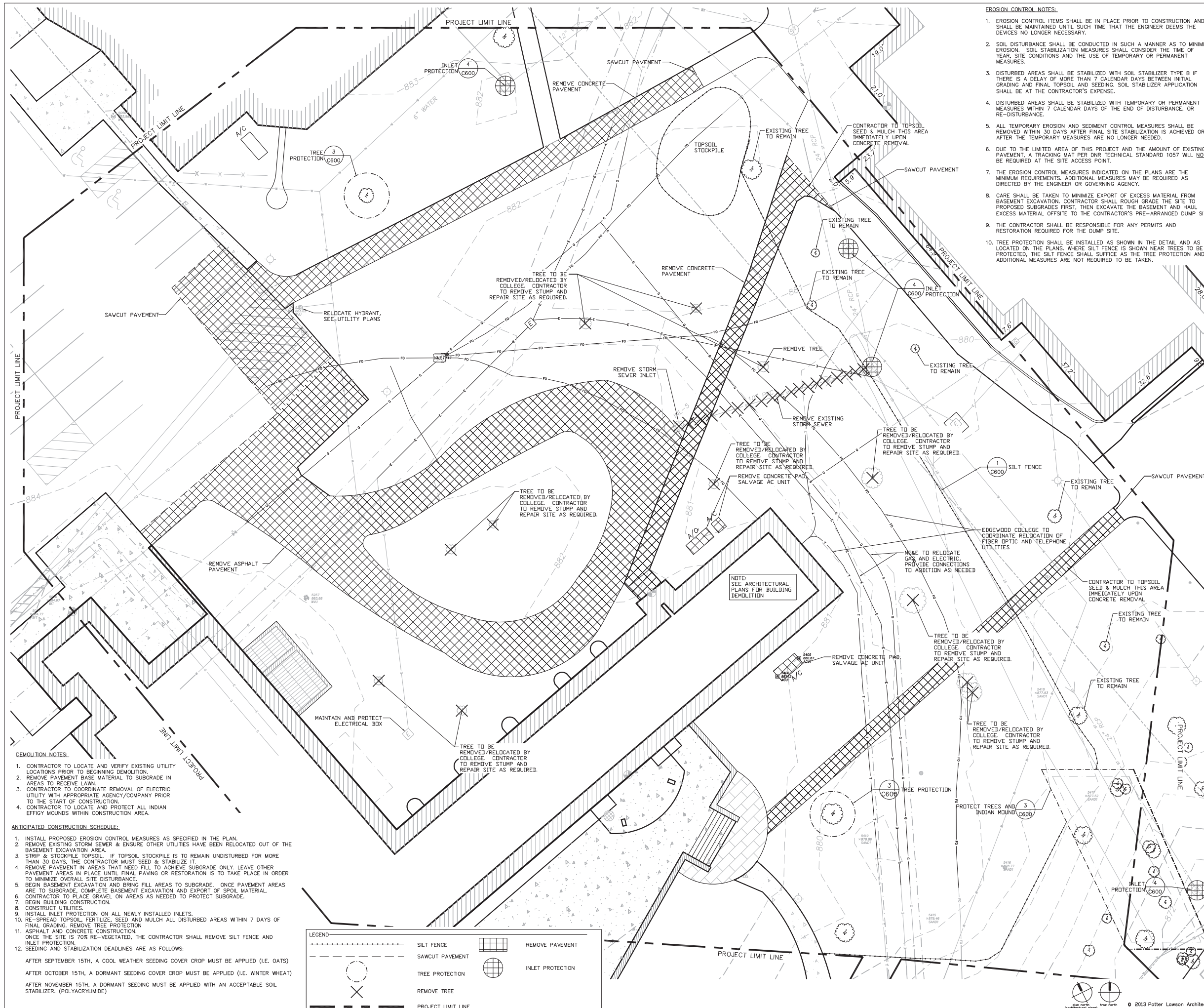
**Edgewood College  
Madison WI**

2013.17.00

Date	Issuance/Revisions	Symbol
01/22/14	Plan Commission Submittal	

**FIRST FLOOR  
PLAN & EXISTING  
SITE OVERLAY**

**1** FIRST FLOOR PLAN EXISTING SITE OVERLAY  
C000 1/16" = 1'-0"



- EROSION CONTROL NOTES:**
1. EROSION CONTROL ITEMS SHALL BE IN PLACE PRIOR TO CONSTRUCTION AND SHALL BE MAINTAINED UNTIL SUCH TIME THAT THE ENGINEER DEEMS THE DEVICES NO LONGER NECESSARY.
  2. SOIL DISTURBANCE SHALL BE CONDUCTED IN SUCH A MANNER AS TO MINIMIZE EROSION. SOIL STABILIZATION MEASURES SHALL CONSIDER THE TIME OF YEAR, SITE CONDITIONS AND THE USE OF TEMPORARY OR PERMANENT MEASURES.
  3. DISTURBED AREAS SHALL BE STABILIZED WITH SOIL STABILIZER TYPE B IF THERE IS A DELAY OF MORE THAN 7 CALENDAR DAYS BETWEEN INITIAL GRADING AND FINAL TOPSOIL AND SEEDING. SOIL STABILIZER APPLICATION SHALL BE AT THE CONTRACTOR'S EXPENSE.
  4. DISTURBED AREAS SHALL BE STABILIZED WITH TEMPORARY OR PERMANENT MEASURES WITHIN 7 CALENDAR DAYS OF THE END OF DISTURBANCE, OR RE-DISTURBANCE.
  5. ALL TEMPORARY EROSION AND SEDIMENT CONTROL MEASURES SHALL BE REMOVED WITHIN 30 DAYS AFTER FINAL SITE STABILIZATION IS ACHIEVED OR AFTER THE TEMPORARY MEASURES ARE NO LONGER NEEDED.
  6. DUE TO THE LIMITED AREA OF THIS PROJECT AND THE AMOUNT OF EXISTING PAVEMENT, A TRACKING MAT PER DNR TECHNICAL STANDARD 1057 WILL NOT BE REQUIRED AT THE SITE ACCESS POINT.
  7. THE EROSION CONTROL MEASURES INDICATED ON THE PLANS ARE THE MINIMUM REQUIREMENTS. ADDITIONAL MEASURES MAY BE REQUIRED AS DIRECTED BY THE ENGINEER OR GOVERNING AGENCY.
  8. CARE SHALL BE TAKEN TO MINIMIZE EXPORT OF EXCESS MATERIAL FROM BASEMENT EXCAVATION. CONTRACTOR SHALL ROUGH GRADE THE SITE TO PROPOSED SUBGRADES FIRST, THEN EXCAVATE THE BASEMENT AND HAUL EXCESS MATERIAL OFFSITE TO THE CONTRACTOR'S PRE-ARRANGED DUMP SITE.
  9. THE CONTRACTOR SHALL BE RESPONSIBLE FOR ANY PERMITS AND RESTORATION REQUIRED FOR THE DUMP SITE.
  10. TREE PROTECTION SHALL BE INSTALLED AS SHOWN IN THE DETAIL AND AS LOCATED ON THE PLANS, WHERE SILT FENCE IS SHOWN NEAR TREES TO BE PROTECTED, THE SILT FENCE SHALL SUFFICE AS THE TREE PROTECTION AND ADDITIONAL MEASURES ARE NOT REQUIRED TO BE TAKEN.

- DEMOLITION NOTES:**
1. CONTRACTOR TO LOCATE AND VERIFY EXISTING UTILITY LOCATIONS PRIOR TO BEGINNING DEMOLITION.
  2. REMOVE PAVEMENT BASE MATERIAL TO SUBGRADE IN AREAS TO RECEIVE LAWN.
  3. CONTRACTOR TO COORDINATE REMOVAL OF ELECTRIC UTILITY WITH APPROPRIATE AGENCY/COMPANY PRIOR TO THE START OF CONSTRUCTION.
  4. CONTRACTOR TO LOCATE AND PROTECT ALL INDIAN EFFIGY MOUNDS WITHIN CONSTRUCTION AREA.
- ANTICIPATED CONSTRUCTION SCHEDULE:**
1. INSTALL PROPOSED EROSION CONTROL MEASURES AS SPECIFIED IN THE PLAN.
  2. REMOVE EXISTING STORM SEWER & ENSURE OTHER UTILITIES HAVE BEEN RELOCATED OUT OF THE BASEMENT EXCAVATION AREA.
  3. STRIP & STOCKPILE TOPSOIL. IF TOPSOIL STOCKPILE IS TO REMAIN UNDISTURBED FOR MORE THAN 30 DAYS, THE CONTRACTOR MUST SEED & STABILIZE IT.
  4. REMOVE PAVEMENT IN AREAS THAT NEED FILL TO ACHIEVE SUBGRADE ONLY. LEAVE OTHER PAVEMENT AREAS IN PLACE UNTIL FINAL PAVING OR RESTORATION IS TO TAKE PLACE IN ORDER TO MINIMIZE OVERALL SITE DISTURBANCE.
  5. BEGIN BASEMENT EXCAVATION AND BRING FILL AREAS TO SUBGRADE. ONCE PAVEMENT AREAS ARE TO SUBGRADE, COMPLETE BASEMENT EXCAVATION AND EXPORT OF SPOIL MATERIAL.
  6. CONTRACTOR TO PLACE GRAVEL ON AREAS AS NEEDED TO PROTECT SUBGRADE.
  7. BEGIN BUILDING CONSTRUCTION.
  8. CONSTRUCT UTILITIES.
  9. INSTALL INLET PROTECTION ON ALL NEWLY INSTALLED INLETS.
  10. RE-SPREAD TOPSOIL, FERTILIZE, SEED AND MULCH ALL DISTURBED AREAS WITHIN 7 DAYS OF FINAL GRADING. REMOVE TREE PROTECTION.
  11. ASPHALT AND CONCRETE CONSTRUCTION. ONCE THE SITE IS 70% RE-VEGETATED, THE CONTRACTOR SHALL REMOVE SILT FENCE AND INLET PROTECTION.
  12. SEEDING AND STABILIZATION DEADLINES ARE AS FOLLOWS:  
 AFTER SEPTEMBER 15TH, A COOL WEATHER SEEDING COVER CROP MUST BE APPLIED (I.E. OATS)  
 AFTER OCTOBER 15TH, A DORMANT SEEDING COVER CROP MUST BE APPLIED (I.E. WINTER WHEAT)  
 AFTER NOVEMBER 15TH, A DORMANT SEEDING MUST BE APPLIED WITH AN ACCEPTABLE SOIL STABILIZER. (POLYACRYLAMIDE)

**LEGEND**

	SILT FENCE		REMOVE PAVEMENT
	SAWCUT PAVEMENT		INLET PROTECTION
	TREE PROTECTION		
	REMOVE TREE		
	PROJECT LIMIT LINE		



**SAA DESIGN GROUP**  
 SAA Design Group, Inc.  
 101 East Badger Road  
 Madison, WI 53713  
 Ph. 608.255.0800  
 Fr. 608.255.7750  
 www.saa-madison.com

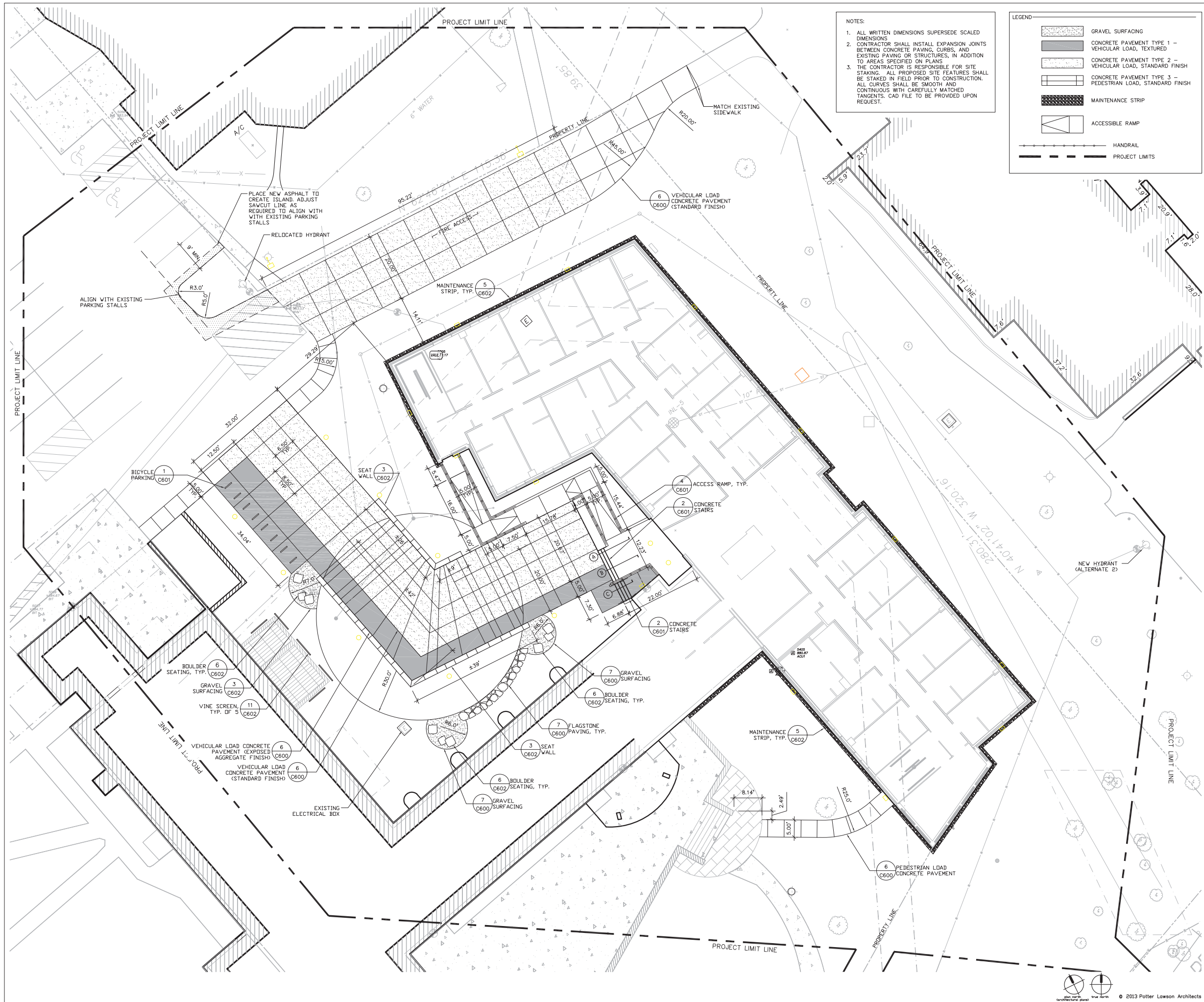
**Regina Hall - Addition and Alterations**

Edgewood College  
 Madison, WI 53711  
 Project 2013.17.00

Date	Issuance/Revisions	Symbol
01/22/2014	Plan Commission Submittal	

**EROSION CONTROL & DEMOLITION PLAN**

**C100**



NOTES:

1. ALL WRITTEN DIMENSIONS SUPERSEDE SCALED DIMENSIONS
2. CONTRACTOR SHALL INSTALL EXPANSION JOINTS BETWEEN CONCRETE PAVING, CURBS, AND EXISTING PAVING OR STRUCTURES, IN ADDITION TO AREAS SPECIFIED ON PLANS
3. THE CONTRACTOR IS RESPONSIBLE FOR SITE STAKING. ALL PROPOSED SITE FEATURES SHALL BE STAKED IN FIELD PRIOR TO CONSTRUCTION. ALL CURVES SHALL BE SMOOTH AND CONTINUOUS WITH CAREFULLY MATCHED TANGENTS. CAD FILE TO BE PROVIDED UPON REQUEST.

LEGEND

- GRAVEL SURFACING
- CONCRETE PAVEMENT TYPE 1 - VEHICULAR LOAD, TEXTURED
- CONCRETE PAVEMENT TYPE 2 - VEHICULAR LOAD, STANDARD FINISH
- CONCRETE PAVEMENT TYPE 3 - PEDESTRIAN LOAD, STANDARD FINISH
- MAINTENANCE STRIP
- ACCESSIBLE RAMP
- HANDRAIL
- PROJECT LIMITS



**SAA DESIGN GROUP**  
 SAA Design Group, Inc.  
 101 East Badger Road  
 Madison, WI 53713  
 Ph. 608.255.0800  
 Fr. 608.255.7750  
 www.saa-madison.com

Notes:

**Regina Hall - Addition and Alterations**

Edgewood College  
 Madison, WI 53711  
 Project 2013.17.00

Date	Issuance/Revisions	Symbol
01/22/2014	Plan Commission Submittal	

**SITE LAYOUT PLAN**

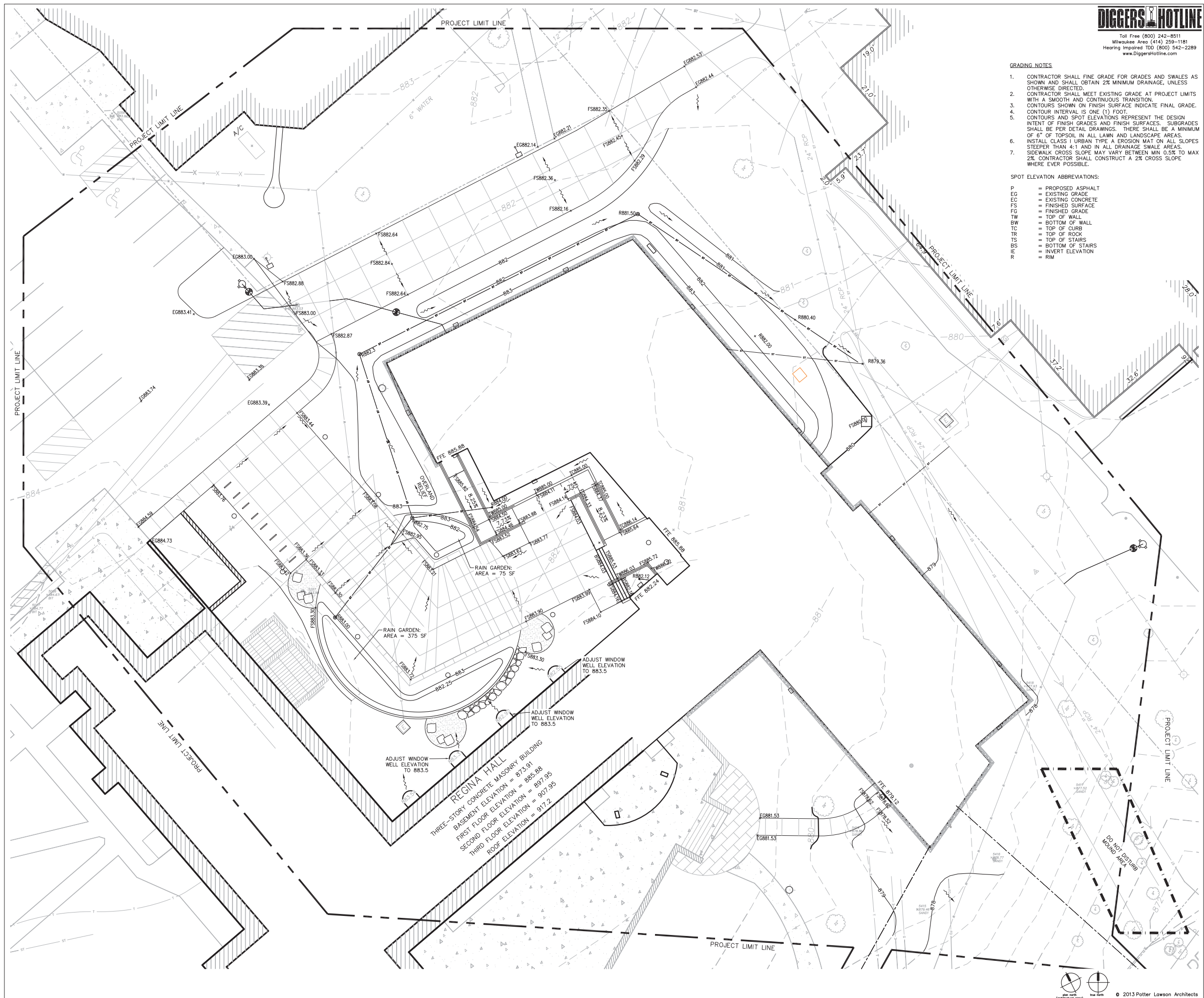
**C200**

**GRADING NOTES**

1. CONTRACTOR SHALL FINE GRADE FOR GRADES AND SWALES AS SHOWN AND SHALL OBTAIN 2% MINIMUM DRAINAGE, UNLESS OTHERWISE DIRECTED.
2. CONTRACTOR SHALL MEET EXISTING GRADE AT PROJECT LIMITS WITH A SMOOTH AND CONTINUOUS TRANSITION.
3. CONTOURS SHOWN ON FINISH SURFACE INDICATE FINAL GRADE.
4. CONTOUR INTERVAL IS ONE (1) FOOT.
5. CONTOURS AND SPOT ELEVATIONS REPRESENT THE DESIGN INTENT OF FINISH GRADES AND FINISH SURFACES. SUBGRADES SHALL BE PER DETAIL DRAWINGS. THERE SHALL BE A MINIMUM OF 6" OF TOPSOIL IN ALL LAWN AND LANDSCAPE AREAS.
6. INSTALL CLASS I URBAN TYPE A EROSION MAT ON ALL SLOPES STEEPER THAN 4:1 AND IN ALL DRAINAGE SWALE AREAS.
7. SIDEWALK CROSS SLOPE MAY VARY BETWEEN MIN 0.5% TO MAX 2%. CONTRACTOR SHALL CONSTRUCT A 2% CROSS SLOPE WHERE EVER POSSIBLE.

**SPOT ELEVATION ABBREVIATIONS:**

- P = PROPOSED ASPHALT
- EG = EXISTING GRADE
- EC = EXISTING CONCRETE
- FS = FINISHED SURFACE
- FG = FINISHED GRADE
- FW = TOP OF WALL
- BW = BOTTOM OF WALL
- TC = TOP OF CURB
- TR = TOP OF ROCK
- TS = TOP OF STAIRS
- BS = BOTTOM OF STAIRS
- IE = INVERT ELEVATION
- R = RIM



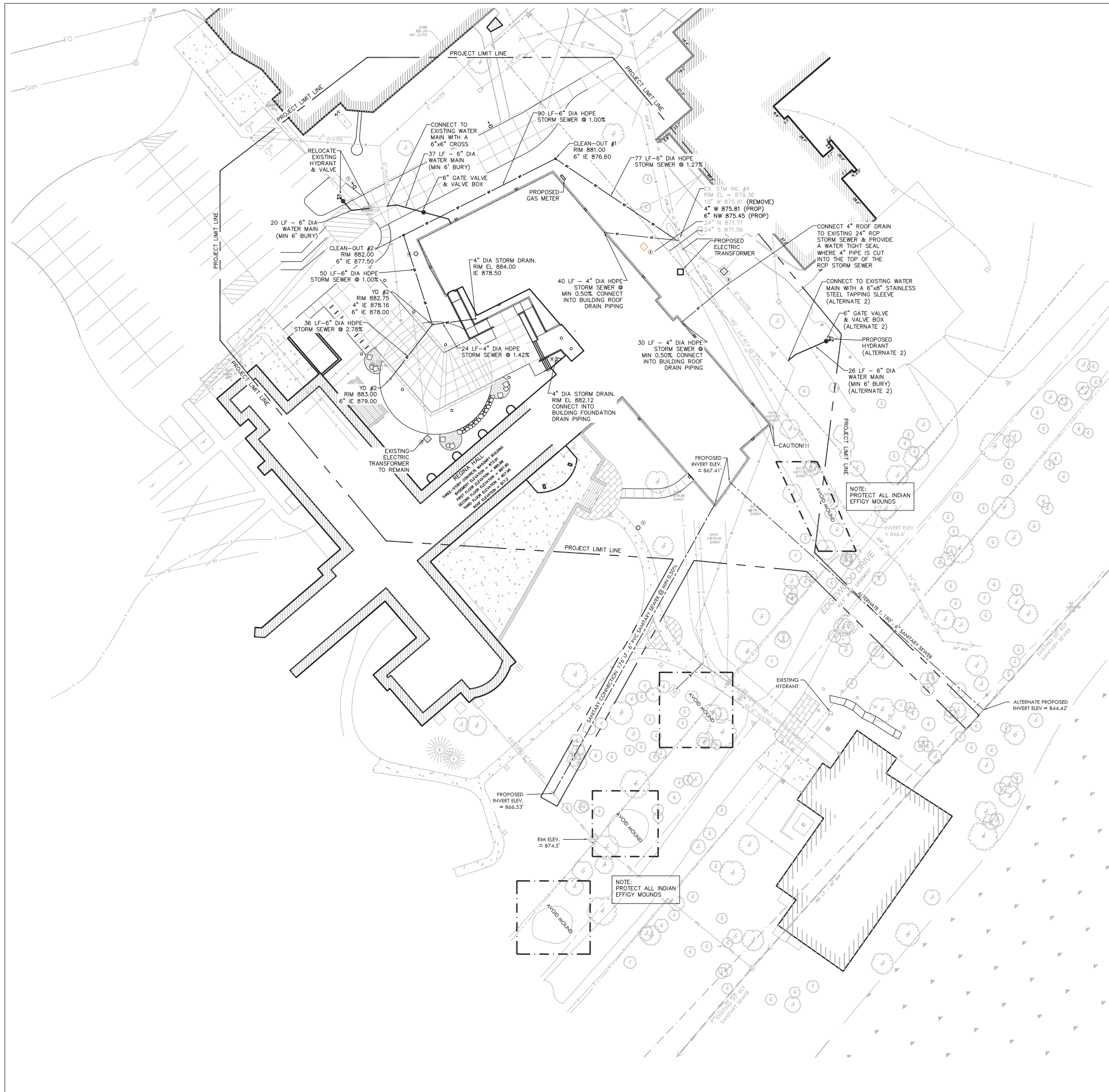
**Regina Hall -  
 Addition and  
 Alterations**

Edgewood College  
 Madison, WI 53711  
 Project 2013.17.00

Date	Issuance/Revisions	Symbol
01/22/2014	Plan Commission Submittal	

**GRADING & DRAINAGE  
 PLAN**

**C300**



**UTILITY NOTES:**

THE CONTRACTOR SHALL CONTACT DIGGERS HOTLINE A MINIMUM OF 3 WORKING DAYS PRIOR TO THE START OF CONSTRUCTION.

STANDARD SPECIFICATIONS: PERFORM ALL WORK IN ACCORDANCE WITH THE PROVISIONS OF:

- STANDARD SPECIFICATIONS FOR SEWER AND WATER CONSTRUCTION IN WISCONSIN (WSWS) LATEST EDITION
- STATE OF WISCONSIN DEPARTMENT OF TRANSPORTATION, DIVISION OF HIGHWAYS STANDARD SPECIFICATIONS FOR ROAD AND BRIDGE CONSTRUCTION (WSDOT) LATEST EDITION
- CONTRACTOR SHALL OBTAIN A CURRENT COPY OF THE CITY OF MADISON'S STANDARD SPECIFICATIONS PRIOR TO THE START OF CONSTRUCTION.

INCLUDING ALL SUPPLEMENTAL SPECIFICATIONS AND OTHER REVISIONS TO DATE, UNLESS OTHERWISE SPECIFIED IN THE SPECIFICATIONS.

WITHIN THE RIGHT-OF-WAY OR UNDERNEATH PAVEMENTS OR BUILDINGS, GRANULAR TRENCH BACKFILL MUST BE USED TO FILL THE TRENCH. ALL OTHER AREAS MAY UTILIZE EXCAVATED TRENCH SPOIL FOR BACKFILL PROVIDING THAT THE MATERIAL IS FREE OF ORGANIC MATERIAL AND STONES LARGER THAN 6" IN DIAMETER.

A MEANS TO LOCATE BURIED UNDERGROUND EXTERIOR NON-METALLIC SEWERS/MAINS AND WATER SERVICES/MAINS MUST BE PROVIDED WITH TRACER WIRE OR OTHER METHODS IN ORDER TO BE LOCATED IN ACCORD WITH THE PROVISIONS OF THESE CODE SECTIONS AS PER 182.0715(2R) OF THE STATUTES.

**WATER DISTRIBUTION SYSTEM:**

**MAIN:**

- DUCTILE IRON (D.I.) AWWA C-151 CLASS 52 WITH CABLE BOND CONDUCTORS, FURNISHED AND INSTALLED PER CHAPTER 8.180 (WSWS) OR
- POLYVINYL CHLORIDE (PVC) AWWA C-900, FURNISHED AND INSTALLED PER CHAPTER 8.20.0 (WSWS)

-ALL WATER MAIN JOINTS SHALL BE RESTRAINED.

**SANITARY SEWER:**

**MAIN:**

- 8" & 12" - POLYVINYL CHLORIDE (PVC) ASTM D 3034, SDR-35 (BURY DEPTH 16' OR LESS)
- 8" & 12" - POLYVINYL CHLORIDE (PVC) ASTM D 3034, SDR-18 (BURY DEPTH 22' TO 16')

**LATERALS:**

- 3" OR LARGER - PVC AWWA, C-900, CL150, SDR 18 OR DUCTILE IRON AWWA C-151, CLASS-52
- 2" & SMALLER - HIGH DENSITY POLYETHYLENE (HDPE) AWWA C-901, SDR 11

-WATER LATERAL AND HYDRANT TEES SHALL BE ANCHORED.

**STORM SEWER:**

- STORM SEWER SPECIFIED AS RCP SHALL BE REINFORCED CONCRETE PIPE CONFORMING TO THE FOLLOWING SPECIFICATIONS:

- 12" DIA - CLASS V RCP
- 15" DIA - CLASS IV RCP
- 18+" DIA - CLASS III RCP

- STORM SEWER SPECIFIED AS HDPE SHALL BE CORRUGATED HDPE, SMOOTH INTERIOR.
- STORM SEWER PIPE: REINFORCED CONCRETE PIPE (RCP) CONFORMING TO ASTM C-76. POLYETHYLENE MATERIAL SHALL CONFORM TO ASTM D3350. AN APPROVED RUBBER GASKET JOINT SHALL BE USED FOR EITHER OPTION. JOINTS FOR RCP SHALL CONFORM TO ASTM D-471. JOINTS FOR HDPE SHALL CONFORM TO ASTM F-477.

**Potter Lawson**  
Success by Design

**SAA DESIGN GROUP**  
SAA Design Group, Inc.  
101 East Badger Road  
Madison, WI 53713  
Ph. 608.255.0800  
Fr. 608.255.7750  
www.saa-madison.com

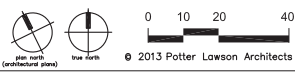
Notes:

**Regina Hall - Addition and Alterations**

Edgewood College  
Madison, WI 53711  
Project 2013.17.00

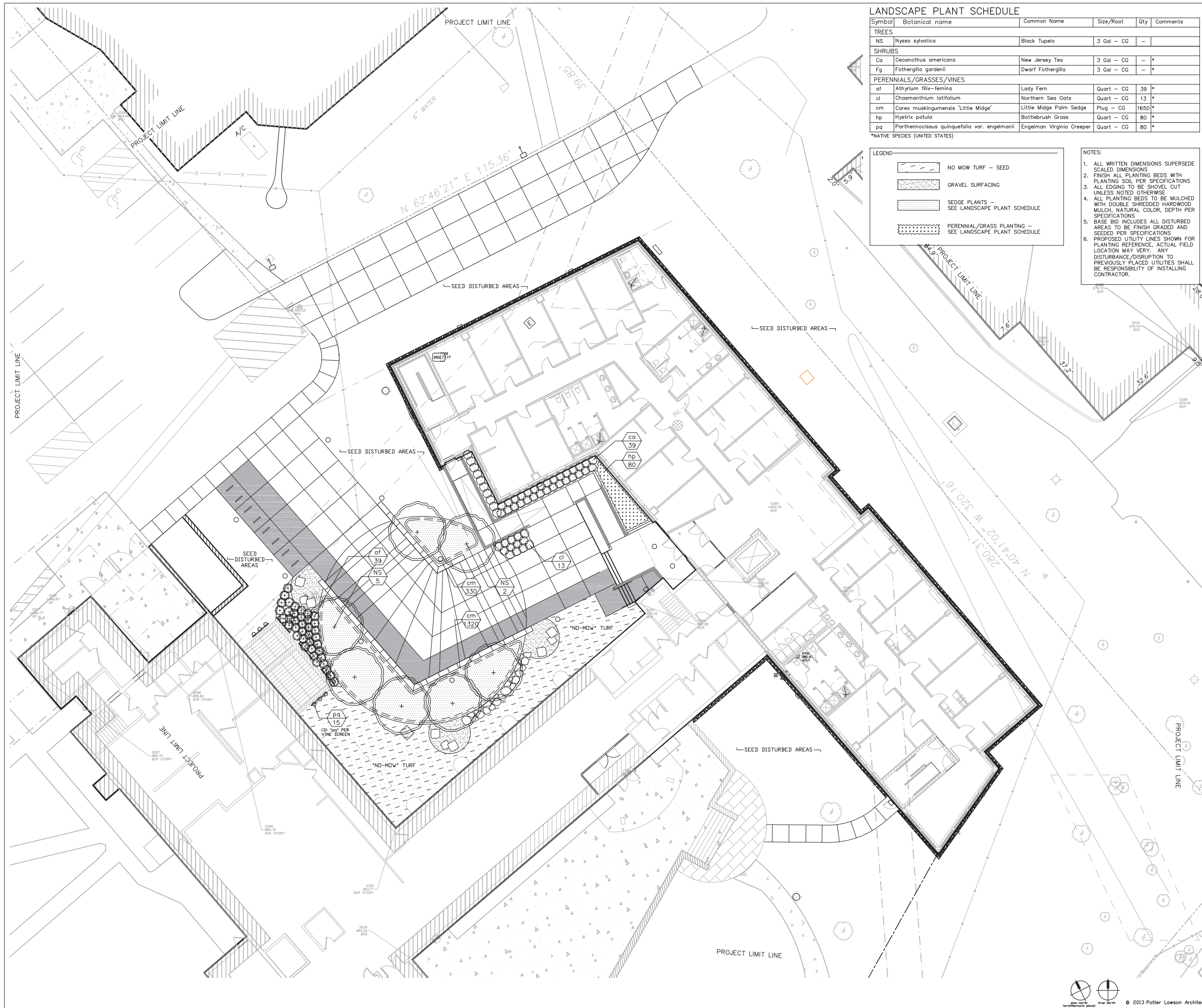
Date	Issuance/Revisions	Symbol
01/22/2014	Plan Commission Submittal	

**DIGGERS HOTLINE**  
Toll Free (800) 242-8511  
Milwaukee Area (414) 259-1181  
Hearing Impaired TDD (800) 542-2289  
www.DiggersHotline.com



**UTILITY PLAN**

**C400**



**LANDSCAPE PLANT SCHEDULE**

Symbol	Botanical name	Common Name	Size/Root	Qty	Comments
<b>TREES</b>					
NS	<i>Nyssa sylvatica</i>	Black Tupelo	3 Gal - CG	-	
<b>SHRUBS</b>					
Ca	<i>Ceanothus americana</i>	New Jersey Tea	3 Gal - CG	-	*
Fg	<i>Fothergilla gardenii</i>	Dwarf Fothergilla	3 Gal - CG	-	*
<b>PERENNIALS/GRASSES/VINES</b>					
af	<i>Athyrium filix-femina</i>	Lady Fern	Quart - CG	39	*
cl	<i>Chasmanthium latifolium</i>	Northern Sea Oats	Quart - CG	13	*
cm	<i>Carex muskingumensis</i> 'Little Midge'	Little Midge Palm Sedge	Plug - CG	1650	*
hp	<i>Hystrix patula</i>	Bottlebrush Grass	Quart - CG	80	*
pq	<i>Parthenocissus quinquefolia</i> var. <i>engelmannii</i>	Engelmann Virginia Creeper	Quart - CG	80	*

\*NATIVE SPECIES (UNITED STATES)

**LEGEND**

- NO MOW TURF - SEED
- GRAVEL SURFACING
- SEED PLANTS - SEE LANDSCAPE PLANT SCHEDULE
- PERENNIAL/GRASS PLANTING - SEE LANDSCAPE PLANT SCHEDULE

- NOTES:**
- ALL WRITTEN DIMENSIONS SUPERSEDE SCALED DIMENSIONS
  - FINISH ALL PLANTING BEDS WITH PLANTING SOIL PER SPECIFICATIONS
  - ALL EDGING TO BE SHOVEL CUT UNLESS NOTED OTHERWISE
  - ALL PLANTING BEDS TO BE MULCHED WITH DOUBLE SHREDDED HARDWOOD MULCH, NATURAL COLOR, DEPTH PER SPECIFICATIONS
  - BASE BID INCLUDES ALL DISTURBED AREAS TO BE FINISH GRADED AND SEEDED PER SPECIFICATIONS
  - PROPOSED UTILITY LINES SHOWN FOR PLANTING REFERENCE. ACTUAL FIELD LOCATION MAY VARY. ANY DISTURBANCE/DISRUPTION TO PREVIOUSLY PLACED UTILITIES SHALL BE RESPONSIBILITY OF INSTALLING CONTRACTOR.

**Potter Lawson**  
Success by Design

**SAA DESIGN GROUP**  
SAA Design Group, Inc.  
101 East Badger Road  
Madison, WI 53713  
Ph. 608.255.0800  
Fr. 608.255.7750  
www.saa-madison.com

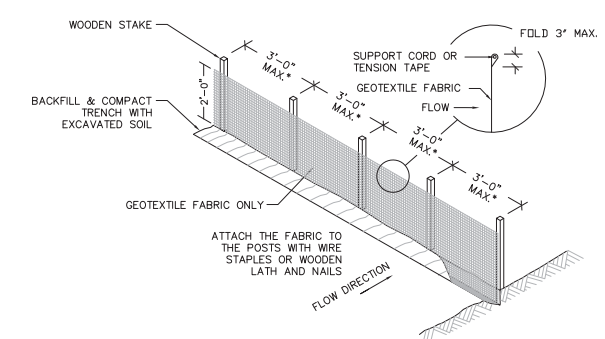
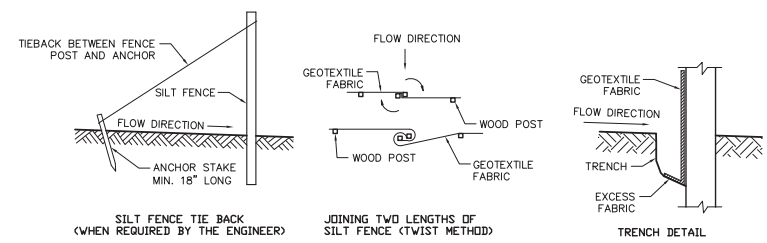
Notes:

**Regina Hall - Addition and Alterations**

Edgewood College  
Madison, WI 53711  
Project 2013.17.00

Date	Issuance/Revisions	Symbol
01/22/2014	Plan Commission Submittal	

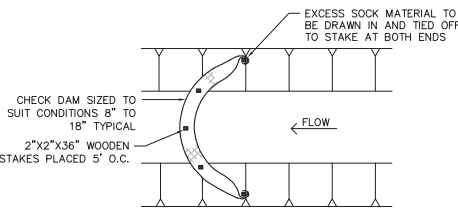
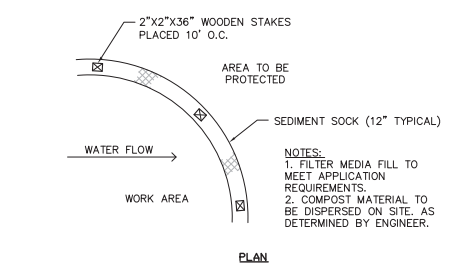
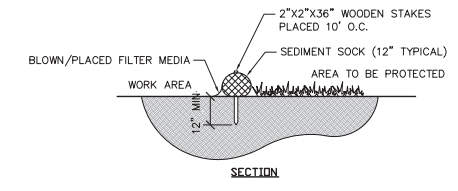




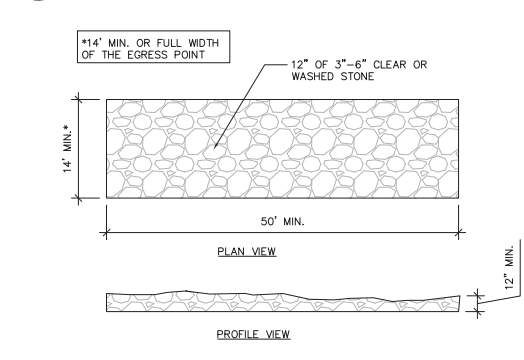
**GENERAL NOTES:**

- FOR MANUAL INSTALLATIONS THE TRENCH SHALL BE A MINIMUM OF 4" WIDE & 6" DEEP TO BURY AND ANCHOR THE GEOTEXTILE FABRIC. FOLD MATERIAL TO FIT TRENCH AND BACKFILL & COMPACT TRENCH WITH EXCAVATED SOIL.
- WOOD POSTS SHALL BE A MINIMUM SIZE OF 3" LENGTH OF OAK OR HICKORY.
- ADDITIONAL POST DEPTH OR TIE BACKS MAY BE REQUIRED IN UNSTABLE SOILS.
- THE MAXIMUM SPACING OF POSTS FOR WOVEN FABRIC SILT FENCE SHALL BE 8 FEET AND FOR NON-WOVEN FABRIC, 3 FEET.
- 8' OF FENCE FABRIC REQUIRED BELOW GRADE IN TRENCH PER DNR TECH. STD. 1056
- MANUFACTURED ALTERNATIVES APPROVED AND LISTED ON THE WDOT PRODUCT ACCEPTABILITY LIST MAY BE SUBSTITUTED.
- FINISHED SIZE, INCLUDING FLAP POCKETS WHERE REQUIRED, SHALL EXTEND A MINIMUM OF 10" AROUND THE PERIMETER TO FACILITATE MAINTENANCE OR REMOVAL.
- FLAP POCKETS SHALL BE LARGE ENOUGH TO ACCEPT WOOD 2"x4".
- EROSION CONTROL SHALL BE PROVIDED IN ACCORDANCE WITH WDNR TECHNICAL STANDARD.
- CROSS BRACE WITH 2" X 4" WOODEN FRAME OR EQUIVALENT AT TOP OF POSTS AS DIRECTED BY THE ENGINEER.
- MINIMUM 14 GAUGE WIRE REQUIRED, FOLD FABRIC 3" OVER THE WIRE AND STAPLE OR PLACE WIRE RINGS ON 12" C.C.
- WIRE SUPPORT FENCE SHALL BE 14 GAUGE MINIMUM WOVEN WIRE WITH A MAXIMUM MESH SPACING OF 6". SECURE TOP OF GEOTEXTILE FABRIC TO TOP OF FENCE WITH STAPLES OR WIRE RINGS AT 12" C.C. (TYPE B)
- GEOTEXTILE FABRIC SHALL BE REINFORCED WITH AN INDUSTRIAL POLYPROPYLENE NETTING WITH A MAXIMUM MESH SPACING OF 3/4" OR EQUAL. A HEAVY DUTY NYLON TOP SUPPORT CORD OR EQUIVALENT IS REQUIRED. (TYPE A)
- STEEL POSTS SHALL BE STUDDED "TEE" OR "U" TYPE WITH A MINIMUM WEIGHT OF 1.28 LBS./LIN. FT. (WITHOUT ANCHOR) FIN ANCHORS SUFFICIENT TO RESIST POST MOVEMENT ARE REQUIRED. WOOD POSTS SHALL BE A MINIMUM SIZE OF 1 1/8" X 1 1/8" OF OAK OR HICKORY.
- CONSTRUCT SILT FENCE FROM A CONTINUOUS ROLL, IF POSSIBLE, BY CUTTING LENGTHS TO AVOID JOINTS. IF A JOINT IS NECESSARY, USE ONE OF THE FOLLOWING TWO METHODS: A.) TWIST METHOD -- OVERLAP THE END POSTS AND TWIST, OR ROTATE, AT LEAST 180 DEGREES. B.) HOOK METHOD -- HOOK THE END OF EACH SILT FENCE LENGTH.

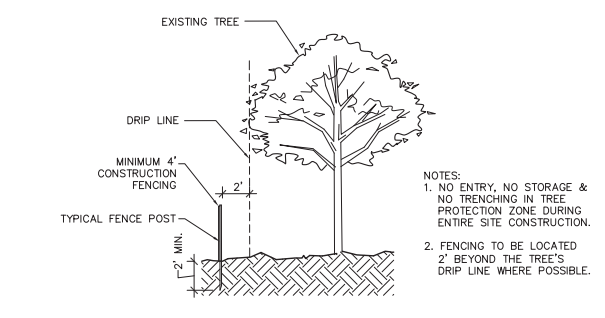
1 SILT FENCE AND SEDIMENT SOCK  
C600 NTS



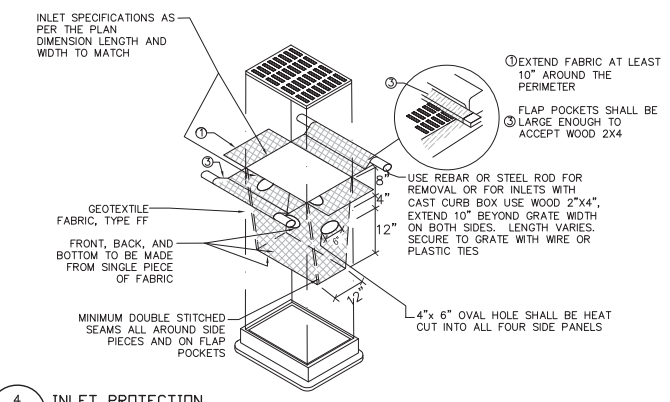
- NOTES:**
- SEDIMENT SHOULD BE REMOVED FROM BEHIND CHECK DAM ONCE THE ACCUMULATED HEIGHT HAS REACHED 1/2 THE HEIGHT OF THE CHECK DAM.
  - CHECK DAM CAN BE DIRECT SEEDDED AT THE TIME OF INSTALLATION.



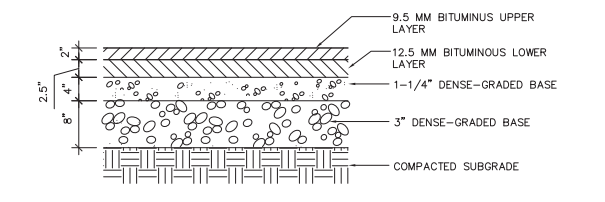
2 TRACKING PAD  
C600 NTS



3 TREE PROTECTION  
C600 NTS



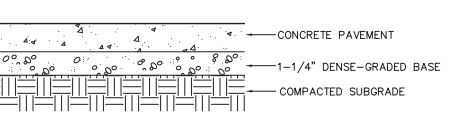
4 INLET PROTECTION  
C600 NTS



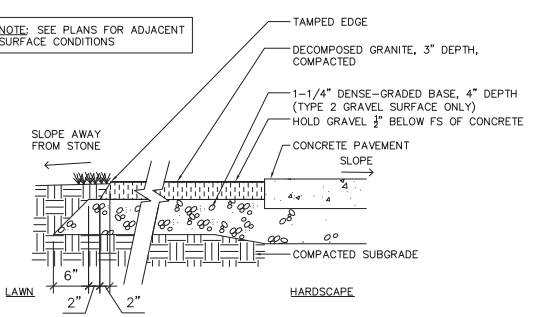
5 ASPHALT PAVEMENT  
C600 NTS

PAVEMENT TYPE:	CONCRETE THICKNESS (A)	BASE THICKNESS (B)
TYPE 1 CONCR. PAVEMENT-PEDESTRIAN LOAD	5"	6"
TYPE 2 CONCR. PAVEMENT-VEHICULAR LOAD	7" FIBER REINFORCED	6"
TYPE 3 CONCR. PAVEMENT-VEHICULAR LOAD WITH TEXTURE	7" FIBER REINFORCED	6"

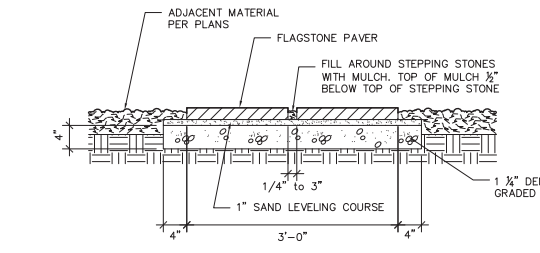
- NOTES:**
- MEDIUM BROOM FINISH, PERPENDICULAR TO DIRECTION OF TRAVEL, UNLESS OTHERWISE STATED.
  - PROVIDE EXPANSION JOINTS 30' ALL WAYS, MINIMUM
  - STANDARD COLOR CONCRETE UNLESS NOTED.
  - MEDIUM & HEAVY LOAD CONCRETE: LONGITUDINAL (EXPANSION) JOINTS SHALL HAVE 24" LONG #4 EPOXY COATED REBAR AT 39" O.C. AT A DEPTH OF 3 3/4" ± 1"
  - MEDIUM & HEAVY LOAD CONCRETE: TRANSVERSE JOINTS SHALL HAVE 18" LONG, 1 1/2" DIA. EPOXY COATED, SMOOTH DOWEL BARS AT 72" O.C. AT 4" DEPTH.



6 CONCRETE PAVEMENT  
C600 NTS

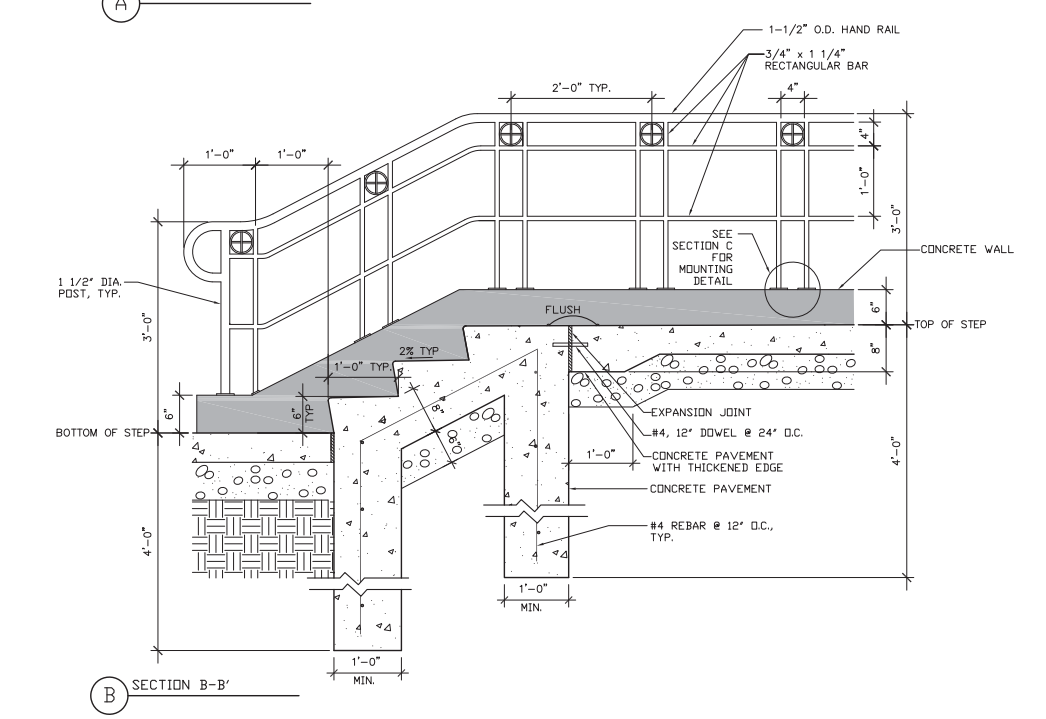
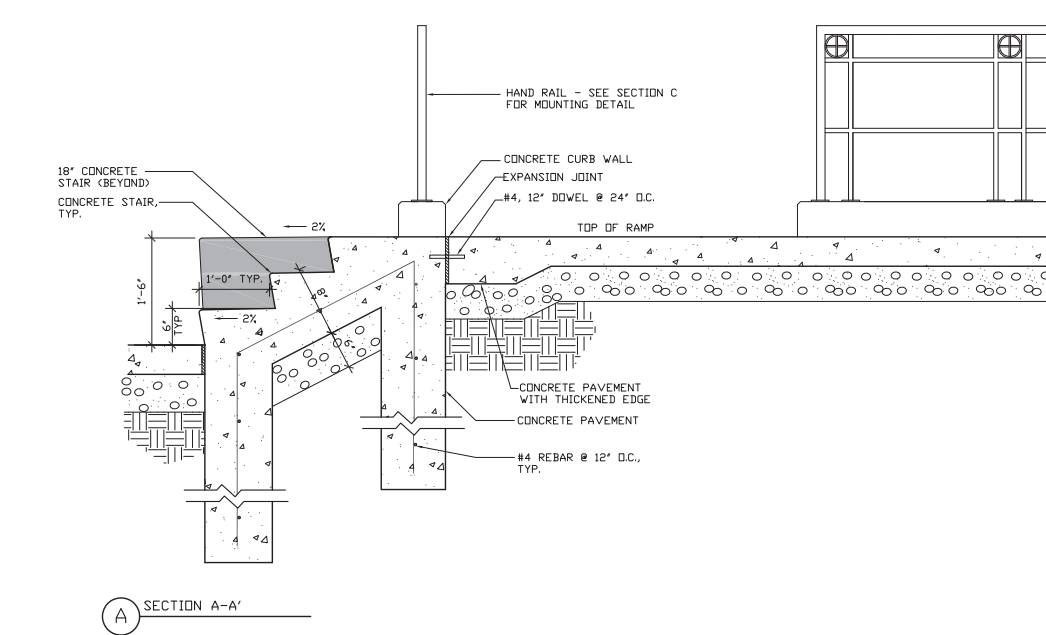
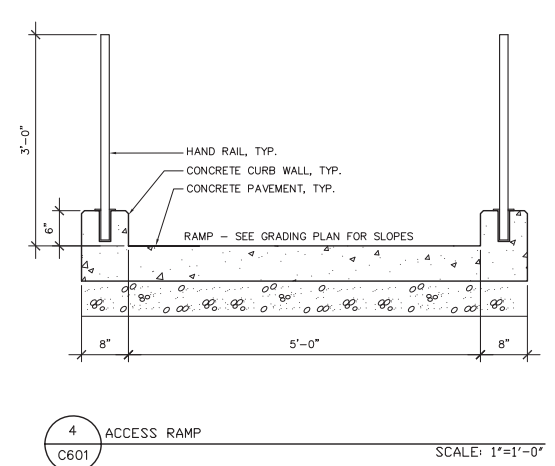
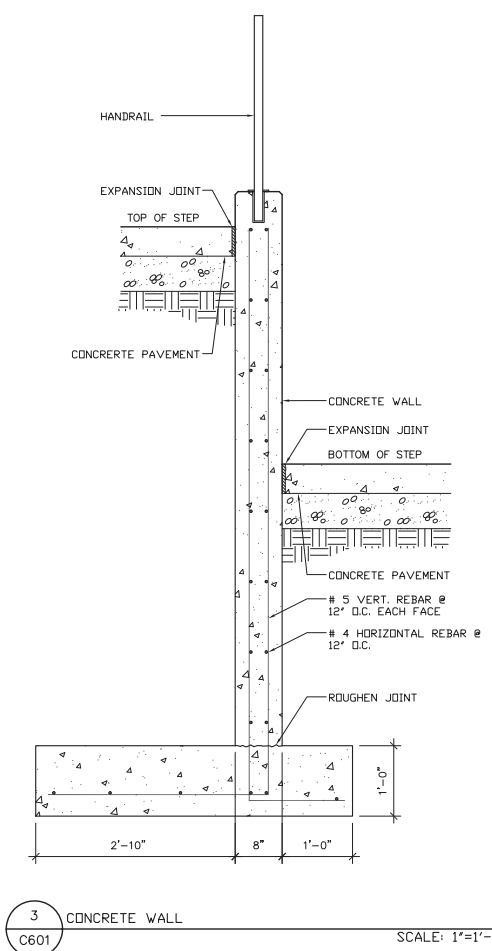
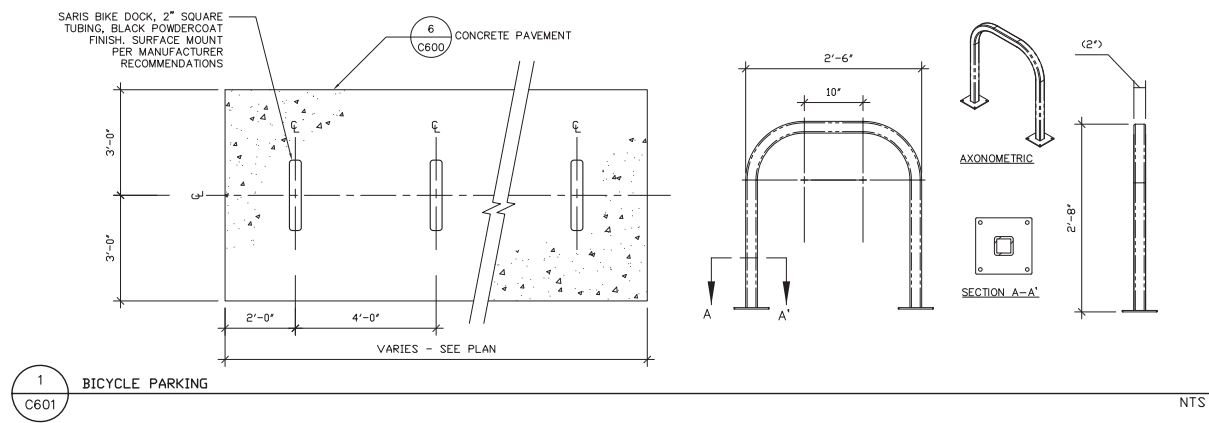


7 GRAVEL SURFACING  
C600 NTS

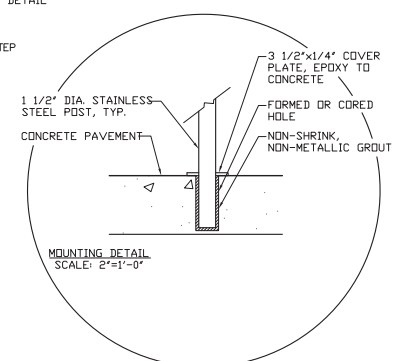
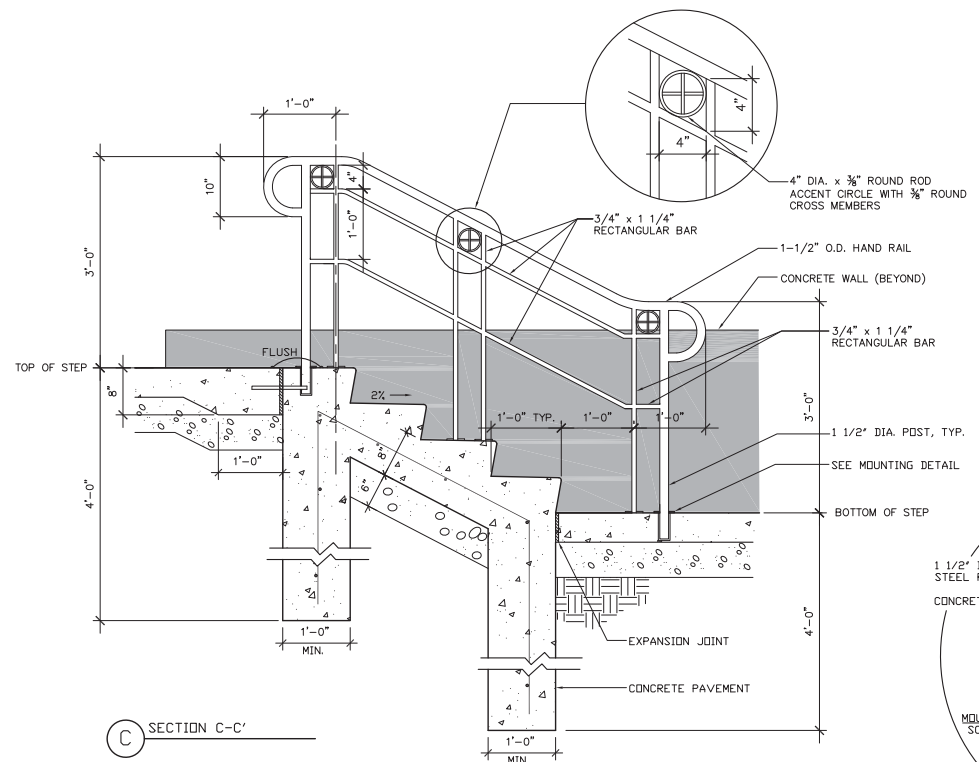


8 FLAGSTONE PAVERS  
C600 SCALE 1" = 1'-0"

Date	Issuance/Revisions	Symbol
01/22/2014	Plan Commission Submittal	



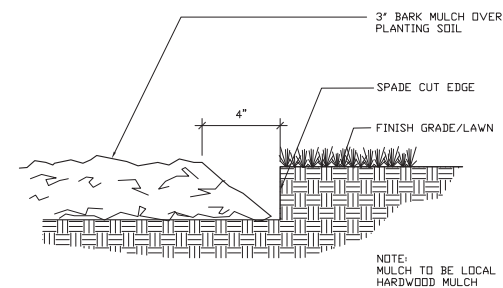
2 CONCRETE STAIRS  
C601



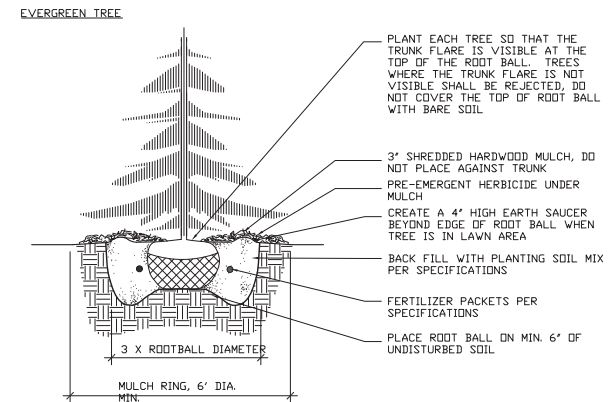
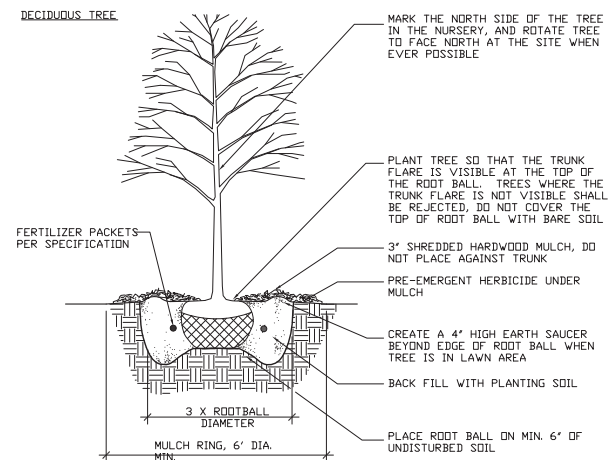
**Regina Hall -  
Addition and  
Alterations**

Edgewood College  
Madison, WI 53711  
Project 2013.17.00

Date	Issuance/Revisions	Symbol
01/22/2014	Plan Commission Submittal	



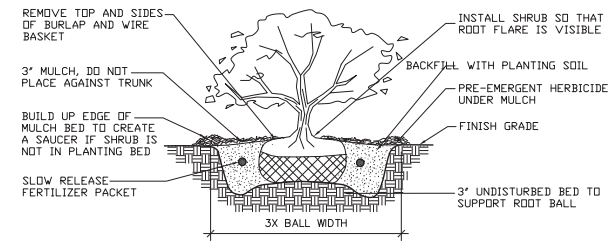
1 SHOVEL CUT EDGE  
C602 NTS



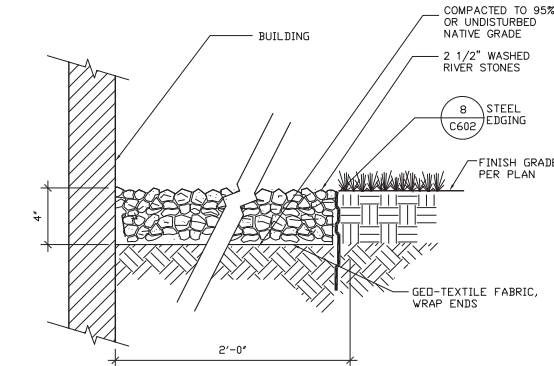
2 B&B TREE PLANTING DETAILS  
C602 NTS

- NOTES:
- DO NOT HEAVILY PRUNE THE TREE AT PLANTING, PRUNE ONLY CROSSOVER LIMBS, CO-DOMINANT LEADERS, AND BROKEN OR DEAD BRANCHES. SOME INTERIOR TWIGS AND LATERAL BRANCHES MAY BE PRUNED. HOWEVER, DO NOT REMOVE THE TERMINAL BUDS OF BRANCHES THAT EXTEND TO THE EDGE OF THE CROWN.
  - STAKE TREES ONLY UPON THE APPROVAL OF THE LANDSCAPE ARCHITECT.
  - WRAP TREE TRUNKS ONLY UPON THE APPROVAL OF THE LANDSCAPE ARCHITECT.
  - REMOVE ALL TWINE, ROPE, WIRE AND BURLAP FROM TOP AND SIDES OF ROOT BALL.

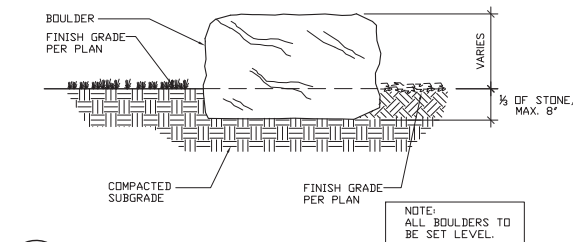
3 SEAT WALL  
C602 NTS



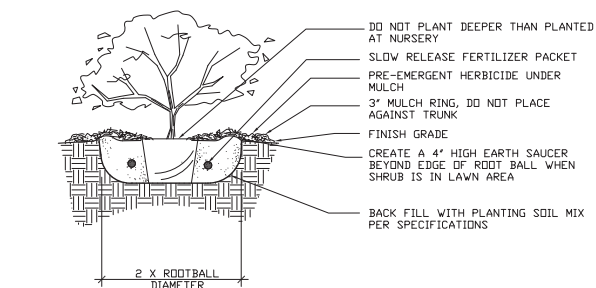
4 B&B SHRUB PLANTING DETAIL  
C602 NTS



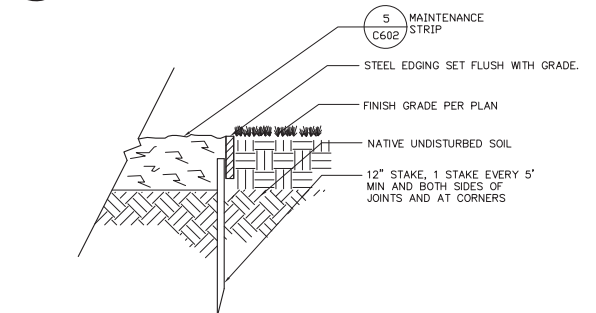
5 MAINTENANCE STRIP  
C602 NTS



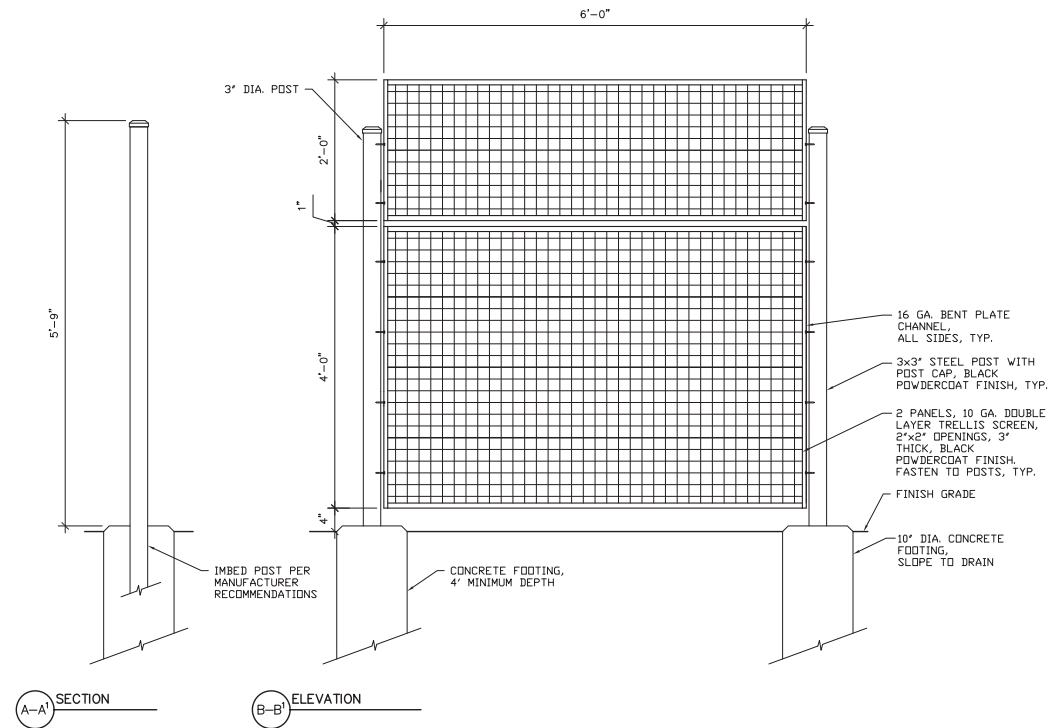
6 BOULDER IN LANDSCAPE  
C602 NTS



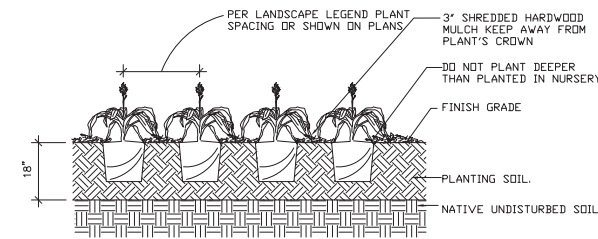
7 CONTAINER SHRUB PLANTING DETAIL  
C602 NTS



8 STEEL EDGING  
C602 NTS



9 VINE SCREEN  
C602 SCALE 1" = 1'-0"



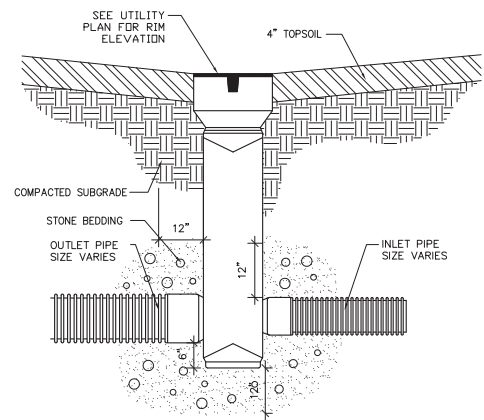
10 GROUND COVER/PERENNIAL/BULB PLANTING DETAIL  
C602 NTS

**Regina Hall -  
Addition and  
Alterations**

Edgewood College  
Madison, WI 53711  
Project 2013.17.00

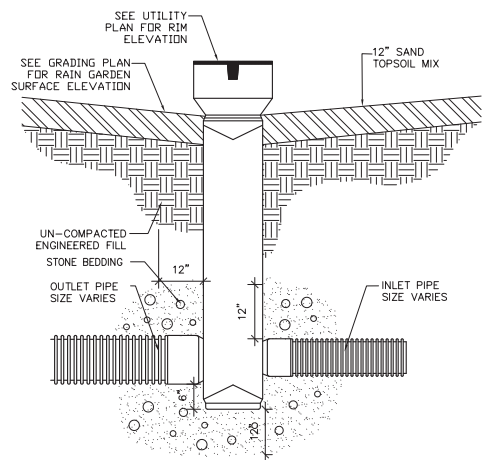
Date	Issuance/Revisions	Symbol
01/22/2014	Plan Commission Submittal	

**DETAILS**



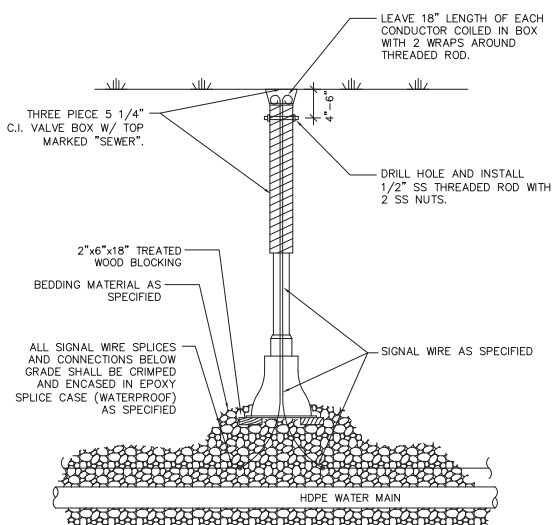
NOTE:  
 1. SEE UTILITY PLANS FOR GRATE AND OUTLET PIPE ELEVATIONS  
 2. SEE MANUFACTURER'S SPECIFICATIONS FOR PROPER DRAIN INSTALLATION

1 YARD DRAIN  
 C603 NTS

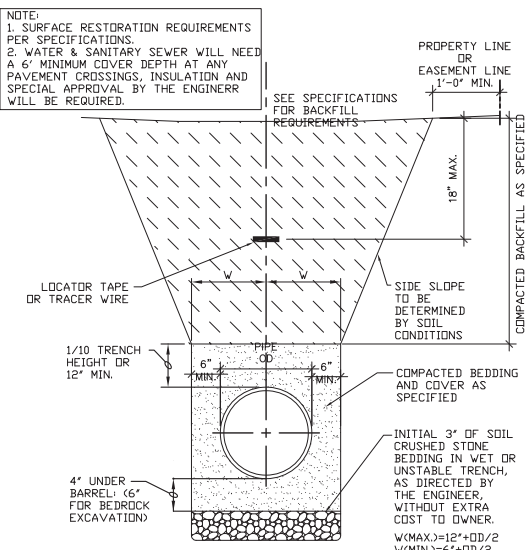


NOTE:  
 1. SEE UTILITY PLANS FOR GRATE AND OUTLET PIPE ELEVATIONS  
 2. SEE MANUFACTURER'S SPECIFICATIONS FOR PROPER DRAIN INSTALLATION

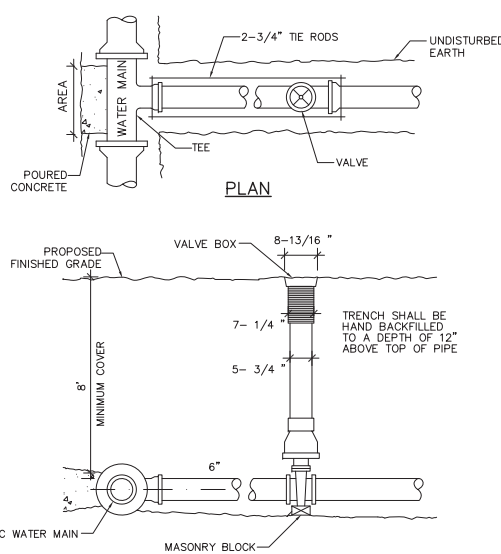
2 RAIN GARDEN OUTLET STRUCTURE  
 C603 NTS



3 TRACER WIRE SIGNAL CONNECTION BOX  
 C603 NTS

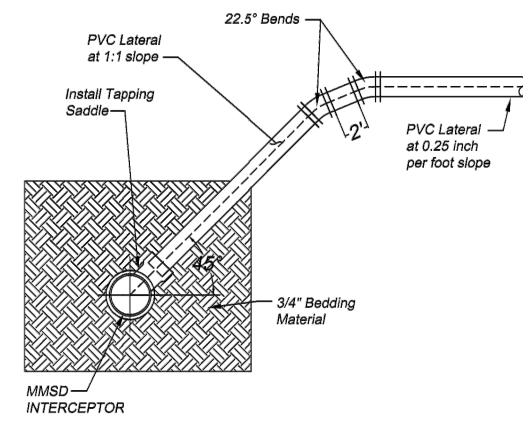


4 UNDERGROUND UTILITY BEDDING & TRENCH SECTION  
 C603 NTS



5 WATER VALVE  
 C603 NTS

**General Notes:**  
 1. All work shall be done in accordance with MMSD and local municipal standards.  
 2. A cored hole shall be provided for the connection. Hole must be circular and made with a diamond bit.  
 3. Connection shall be made using a Smith-Blair Tapping Saddle, or other as approved by MMSD.  
 4. Lateral shall be marked in two locations using 3M ScotchMark Electronic Ball Marker System Extended Range Marker (model #1404-XR).  
 •• One marker ball at the lateral/interceptor connection  
 •• One marker ball at the right-of-way line  
 5. Contractor is required to obtain a direct connection permit from MMSD prior to any work.  
 6. Contractor to notify Ray Schneider of MMSD at 608-347-3628 a minimum of 3 working days prior to connection to arrange inspection.



DESIGNED BY CAS  
 DRAWN BY CAS  
 CHECKED BY TWG  
 APPROVED BY BAB

**RISER-LATERAL DETAIL  
 MADISON METRO SEWER DISTRICT**

DATE: JUN 2014  
 SHEET NO: SD-4.06

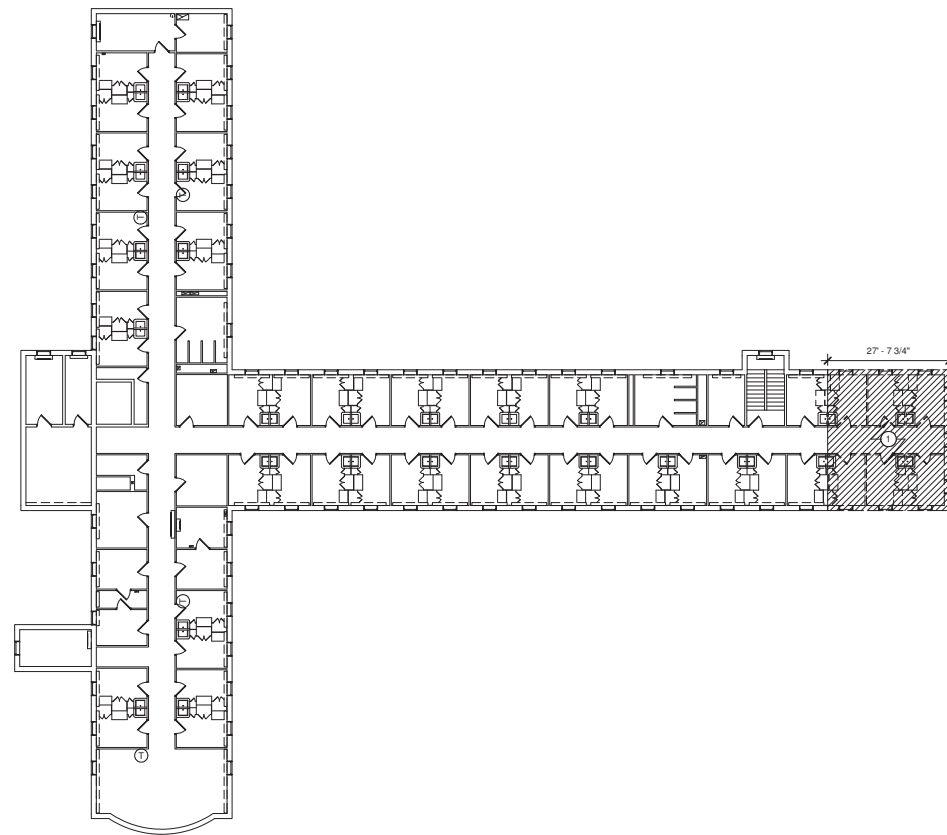
6 SANITARY SEWER RISER  
 C603 NTS

**Regina Hall -  
 Addition and  
 Alterations**

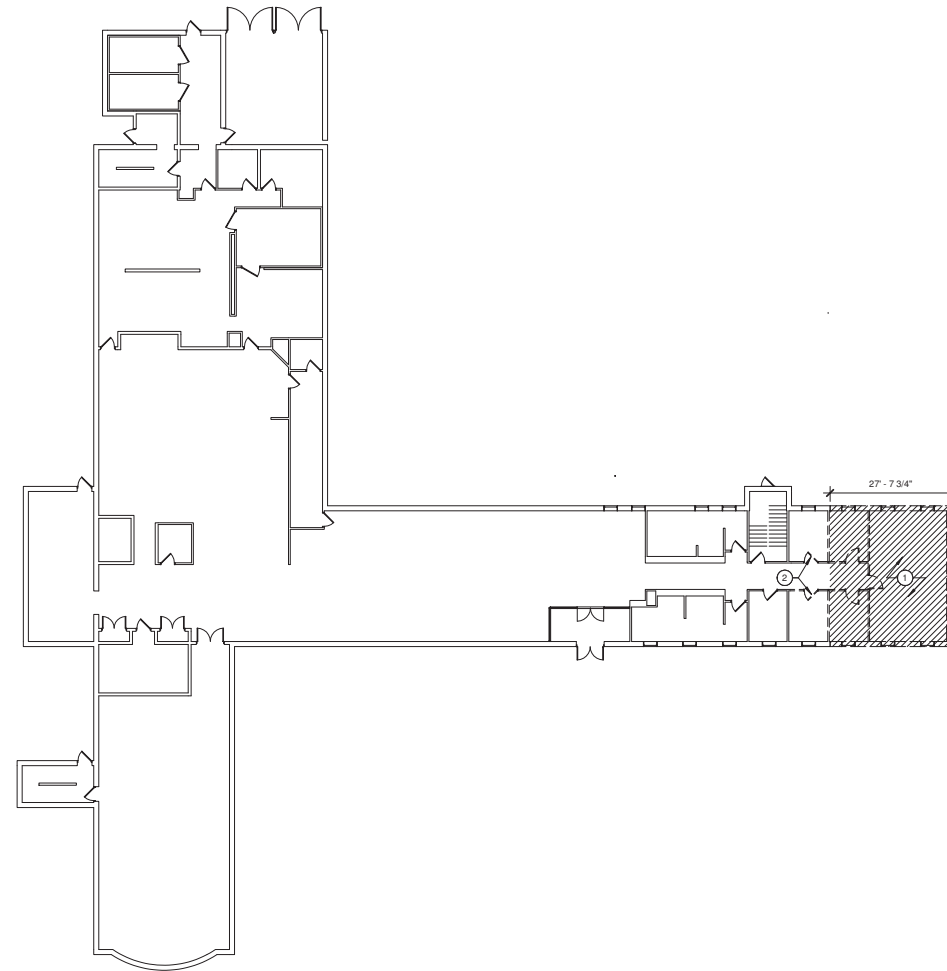
Edgewood College  
 Madison, WI 53711  
 Project 2013.17.00

Date	Issuance/Revisions	Symbol
01/22/2014	Plan Commission Submittal	

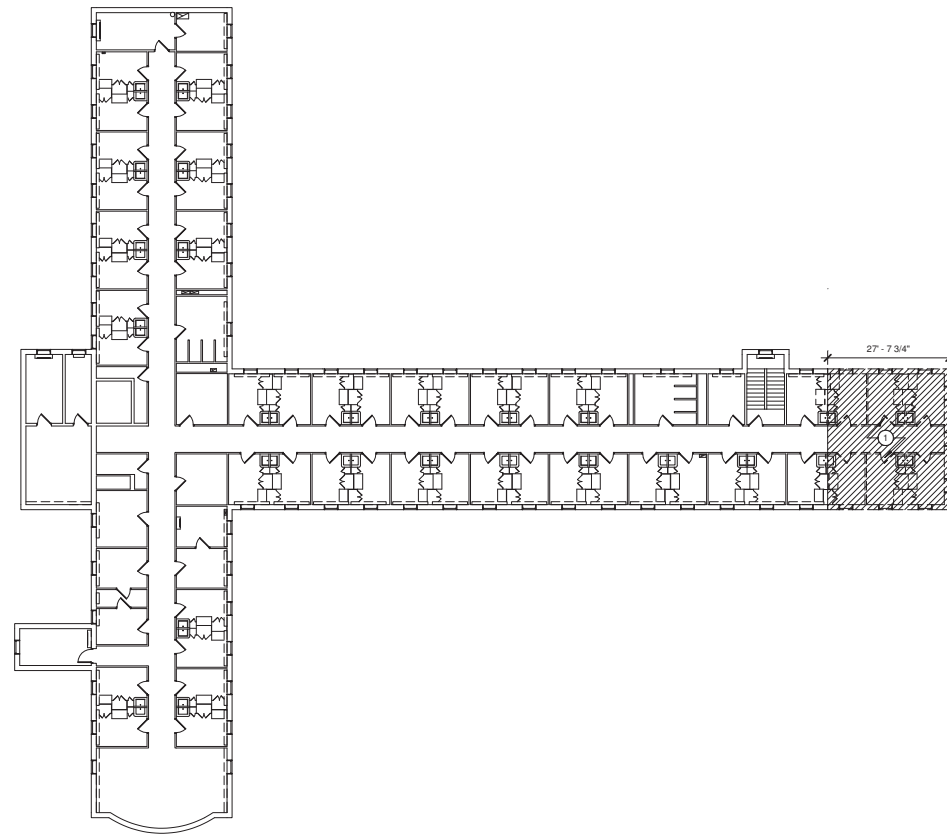
**DETAILS**



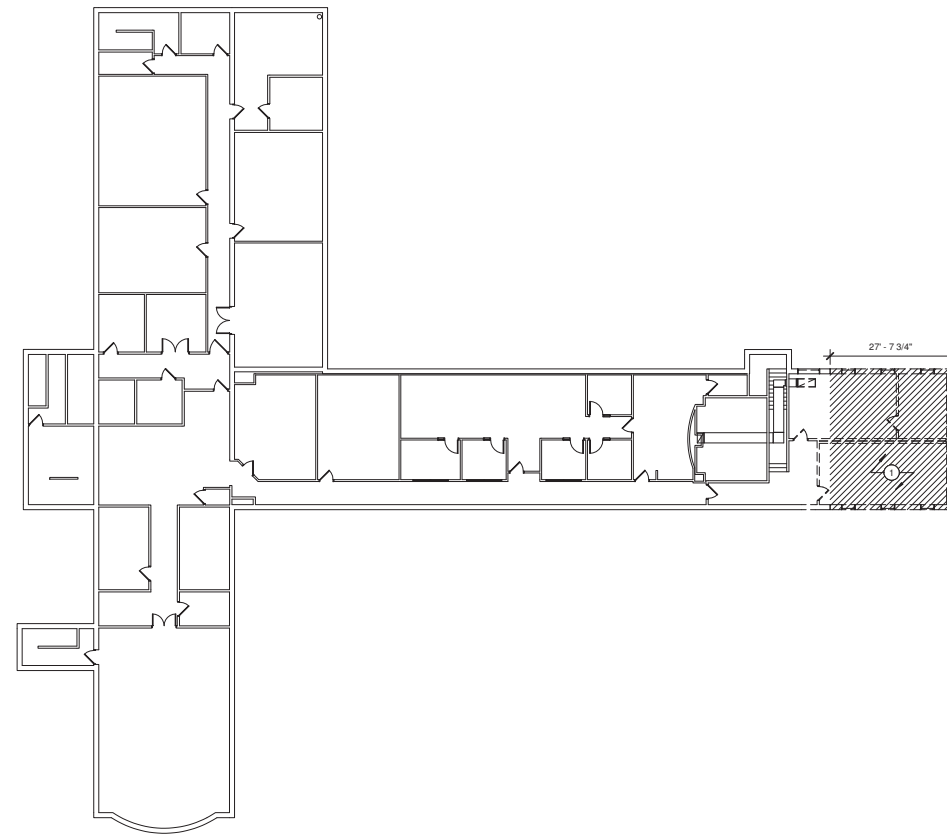
**4 DEMO THIRD FLOOR PLAN**  
D101 1/16" = 1'-0"



**2 DEMO FIRST FLOOR PLAN**  
D101 1/16" = 1'-0"



**3 DEMO SECOND FLOOR PLAN**  
D101 1/16" = 1'-0"



**1 DEMO BASEMENT PLAN**  
D101 1/16" = 1'-0"

- Notes:
- DEMOLITION LEGEND**
- HATCHED AREA INDICATES AREA OF CONTRACTOR'S LIMIT OF BUILDING DEMOLITION
  - TO REMAIN
  - TO BE REMOVED
- DEMOLITION KEYED NOTES**
- ALL COMPONENTS OF EXISTING BUILDING WITHIN HATCHED AREA TO BE DEMOLISHED.
  - REMOVE DOOR - PRESERVE AND PROTECT FOR FUTURE USE.
- DEMOLITION GENERAL NOTES**
1. SEE MECHANICAL DRAWINGS FOR EXTENT OF ARCHITECTURAL DEMOLITION OUTSIDE OF BUILDING DEMOLITION AREA - PATCH ALL FLOOR, WALL, CEILING, CASEWORK FINISHES TO MATCH EXISTING WHERE FINISH IS MISSING OR DAMAGED BY DEMOLITION.
  2. PROVIDE SUPPORT FOR EXISTING BUILDING TO PREVENT DAMAGE DURING & AFTER BUILDING DEMOLITION.

**PRELIMINARY**  
NOT FOR CONSTRUCTION

**Regina Hall -  
Addition and  
Alterations**

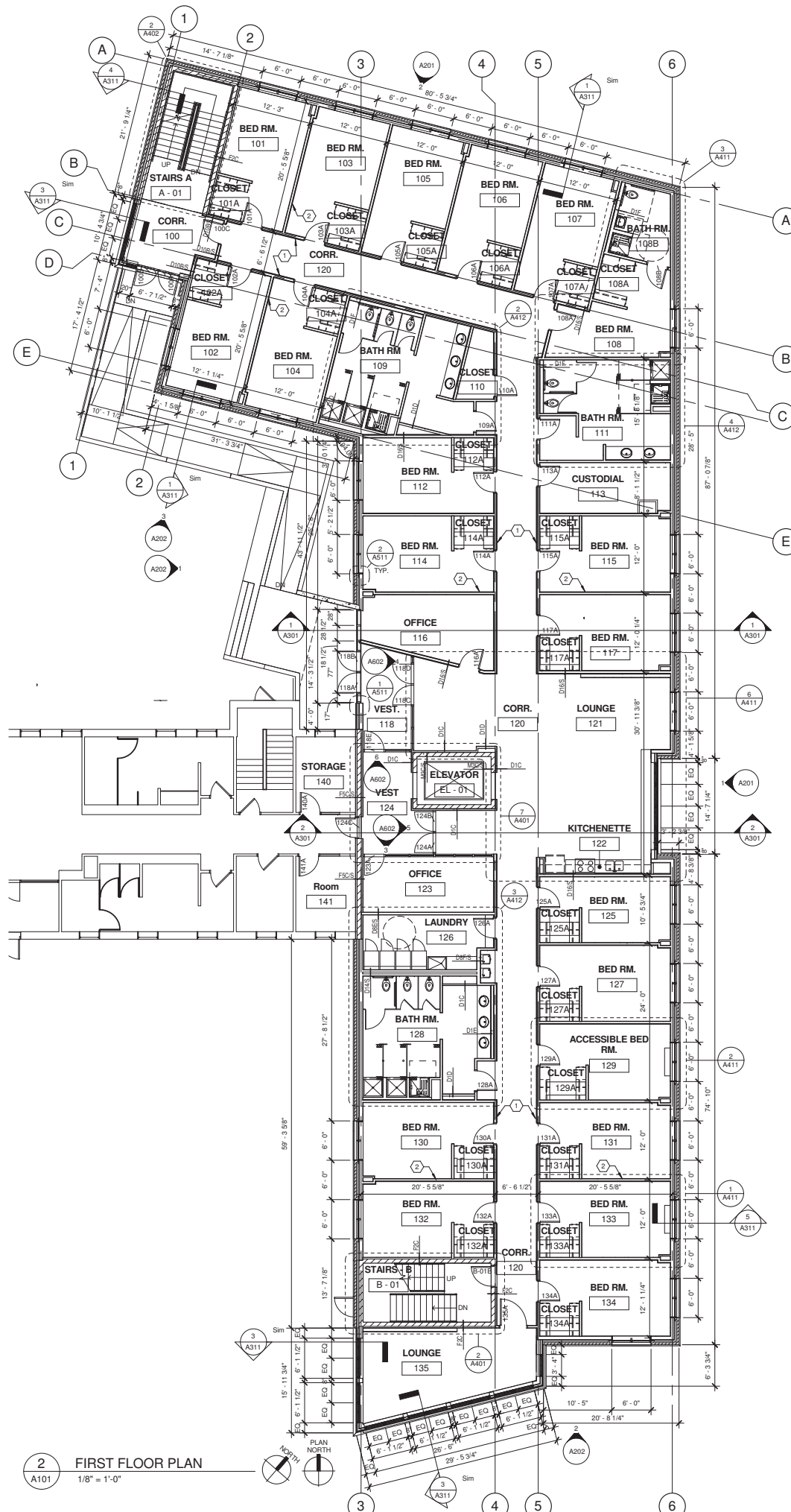
**Edgewood College  
Madison WI**

2013.17.00

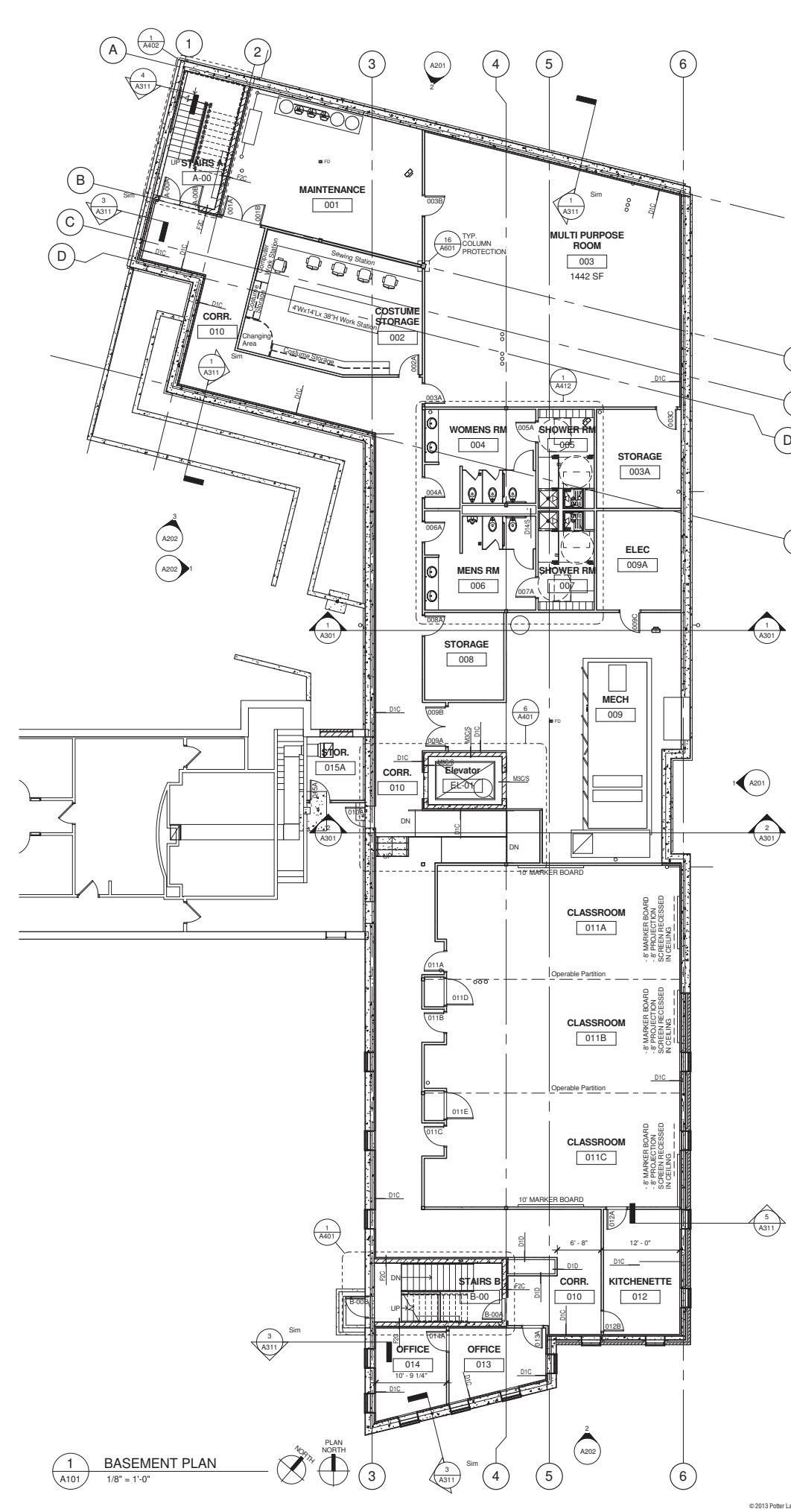
Date	Issuance/Revisions	Symbol
01/22/14	Plan Commission Submittal	

**DEMO PLANS**

**D101**



**2 FIRST FLOOR PLAN**  
1/8" = 1'-0"



**1 BASEMENT PLAN**  
1/8" = 1'-0"

- Notes:
- NOTES
- SEE DRAWING A601 FOR PARTITION TYPES
- 1 PARTITION TYPE D16S: PARTITIONS BETWEEN SLEEPING ROOMS AND CORRIDOR WALLS
- 2 PARTITION TYPE D15S: PARTITIONS BETWEEN SLEEPING ROOMS
- OTHER PARTITIONS ARE TYPE D8D5 (UNJ)

**PRELIMINARY**  
NOT FOR CONSTRUCTION

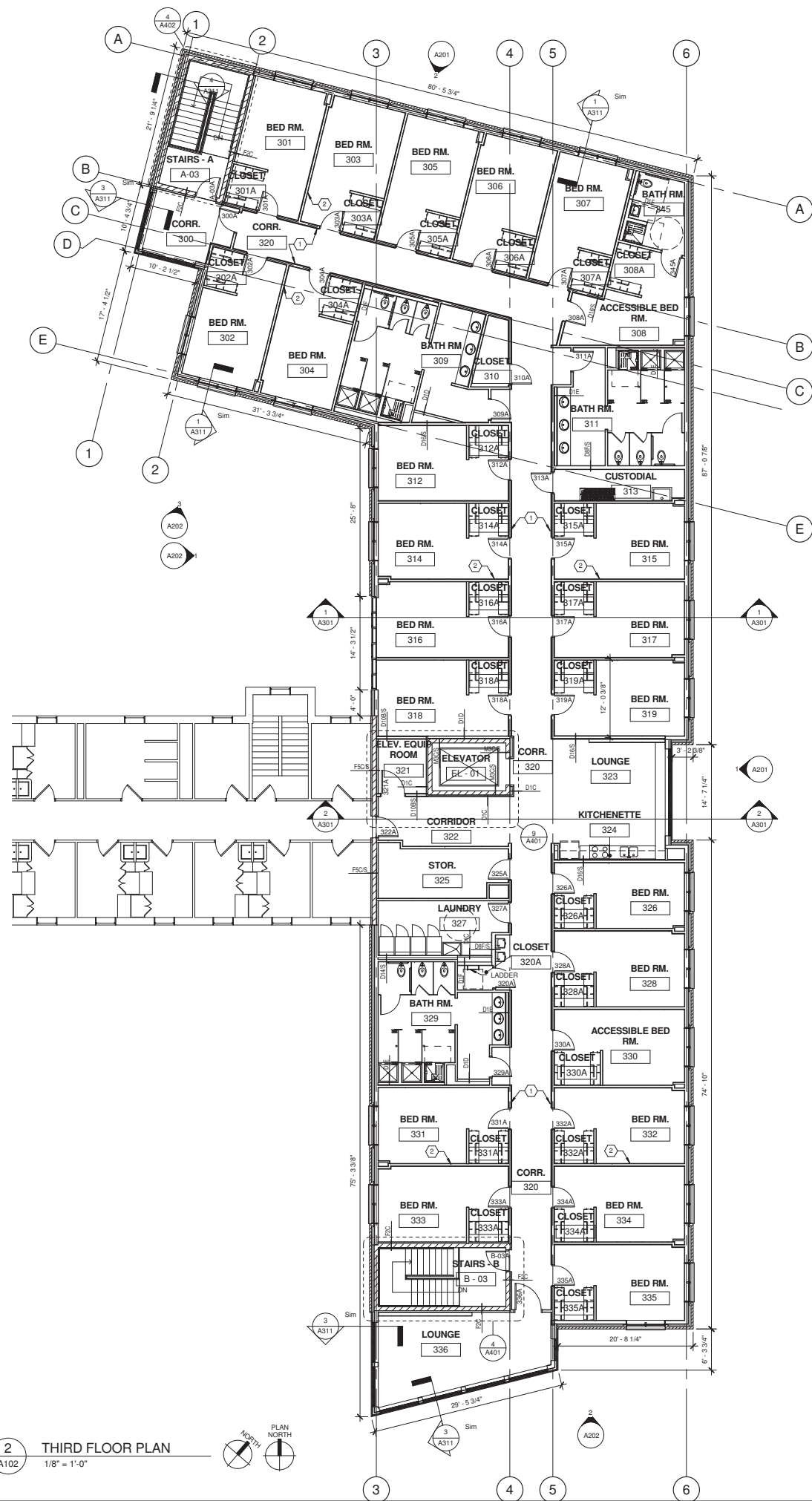
**Regina Hall -  
Addition and  
Alterations**

**Edgewood College**  
Madison WI

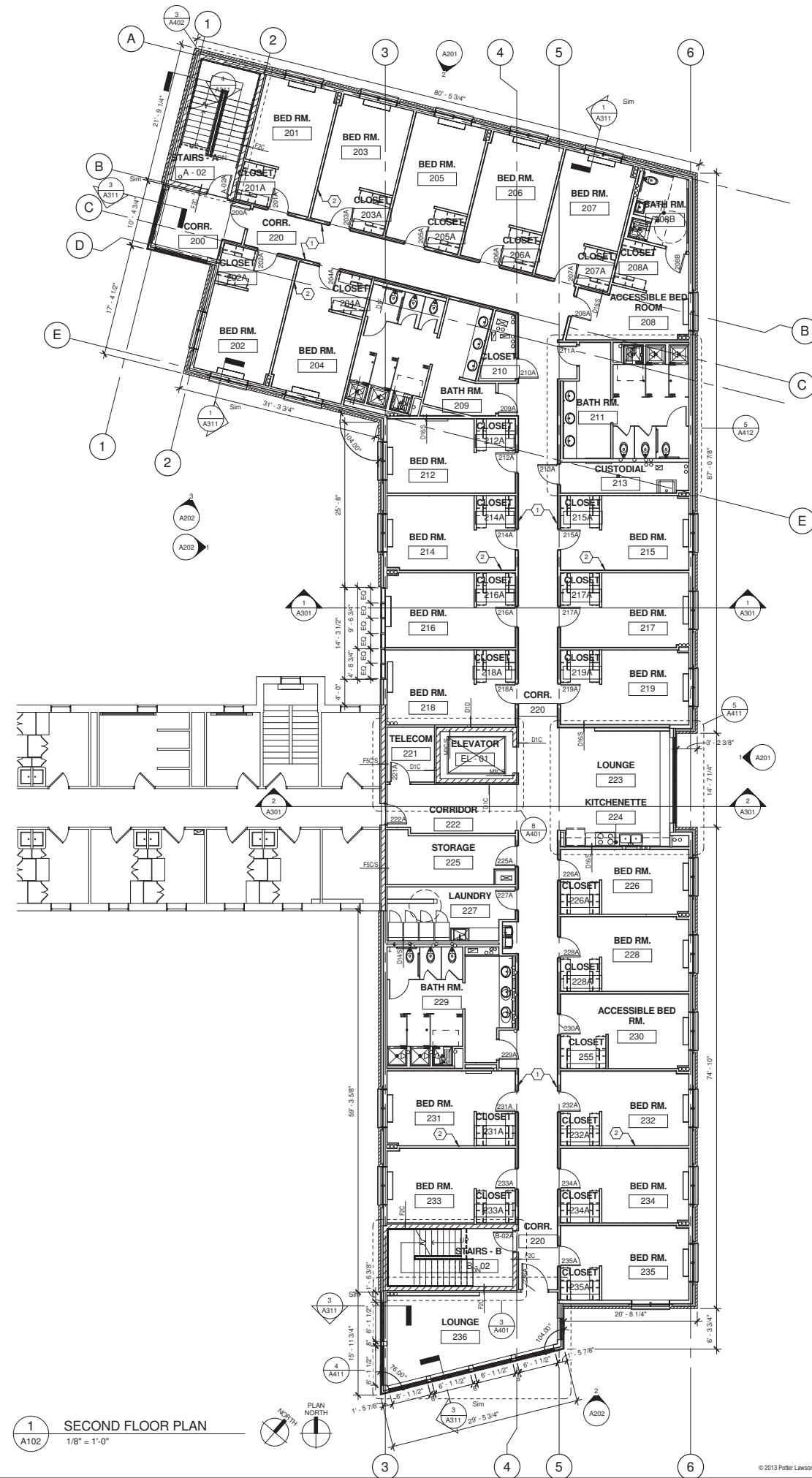
2013.17.00

Date	Issuance/Revisions	Symbol
01/22/14	Plan Commission Submittal	

**Basement / First  
Floor Plans**



**2** THIRD FLOOR PLAN  
1/8" = 1'-0"



**1** SECOND FLOOR PLAN  
1/8" = 1'-0"

- Notes:  
NOTES
- SEE DRAWING A601 FOR PARTITION TYPES
  - 1 PARTITION TYPE D16S: PARTITIONS BETWEEN SLEEPING ROOMS AND CORRIDOR WALLS
  - 2 PARTITION TYPE D15S: PARTITIONS BETWEEN SLEEPING ROOMS
  - OTHER PARTITIONS ARE TYPE D6D5 (UON)

PRELIMINARY  
NOT FOR CONSTRUCTION

Regina Hall -  
Addition and  
Alterations

Edgewood College  
Madison WI

2013.17.00

Date: 01/22/14  
Issuance/Revisions: Plan Commission Submittal  
Symbol:

Second / Third  
Floor Plans

Notes:

**PRELIMINARY**  
NOT FOR CONSTRUCTION

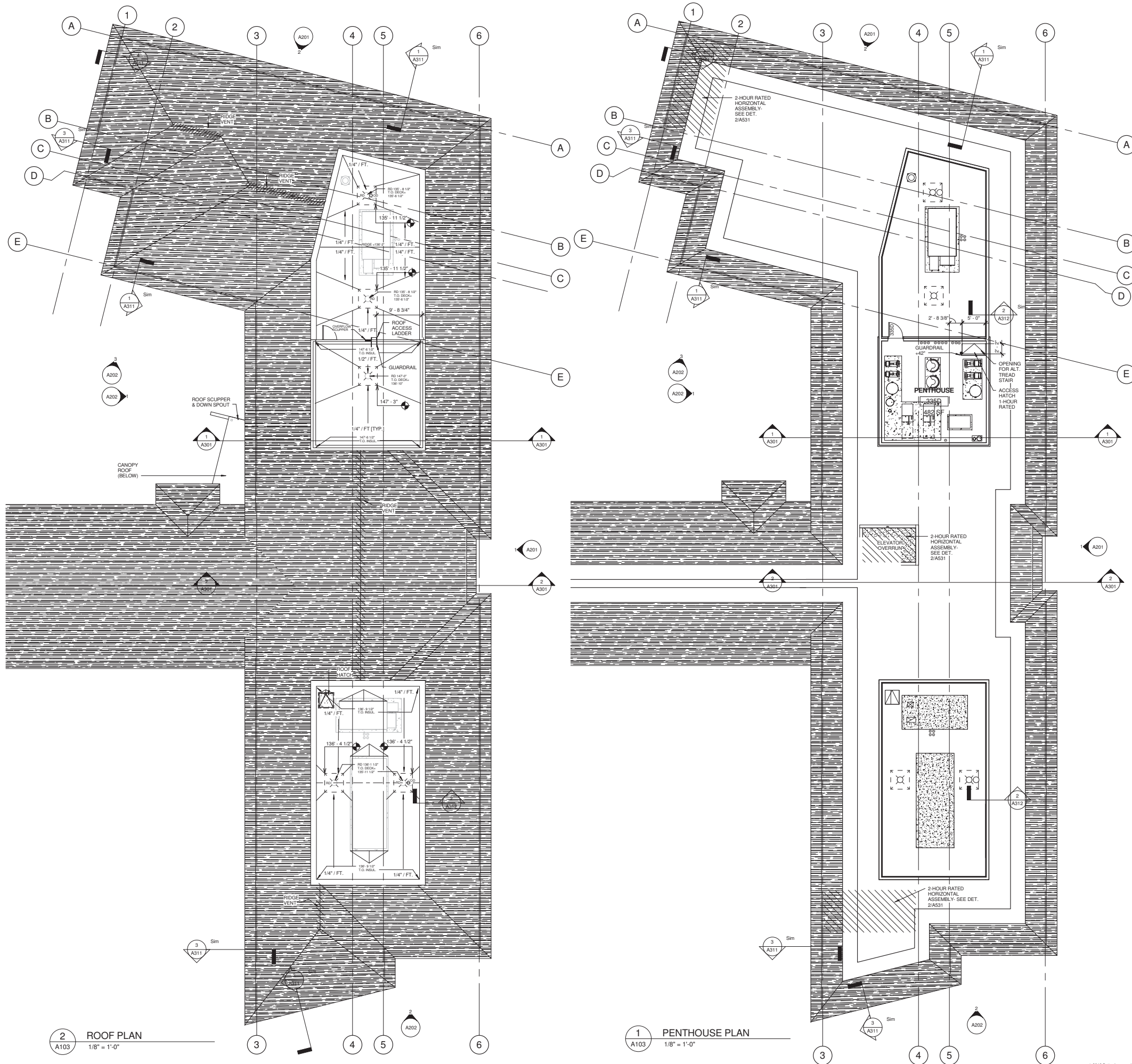
Regina Hall -  
Addition and  
Alterations

Edgewood College  
Madison WI

2013.17.00

Date	Issuance/Revisions	Symbol
01/22/14	Plan Commission Submittal	

**Penthouse / Roof  
Plans**



**2** ROOF PLAN  
A103 1/8" = 1'-0"

**1** PENTHOUSE PLAN  
A103 1/8" = 1'-0"

1/20/2014 3:18:22 PM



Notes:

- ELEVATION KEY NOTES
- 1 METAL SIDING
  - 2 BRICK VENEER
  - 3 BRICK SOLDIER COURSE
  - 4 BRICK ROWLOCK COURSE
  - 5 MANUFACTURED STONE SILL / HORIZONTAL BAND
  - 6 GLAZED ALUMINUM OPERABLE WINDOW UNIT
  - 7 GLAZED ALUMINUM FIXED WINDOW UNIT
  - 8 SHINGLE ROOFING
  - 9 GLAZED ALUMINUM FIXED WINDOW UNIT W/ WINDOW WELL
  - 10 GLAZED ALUMINUM CURTAIN WALL SYSTEM W/ OPERABLE VENTS
  - 11 CANOPY
  - 12 CONCRETE SITE WALL
  - 13 CONCRETE BENCH / STAIRS

PRELIMINARY  
NOT FOR CONSTRUCTION

Regina Hall -  
Addition and  
Alterations

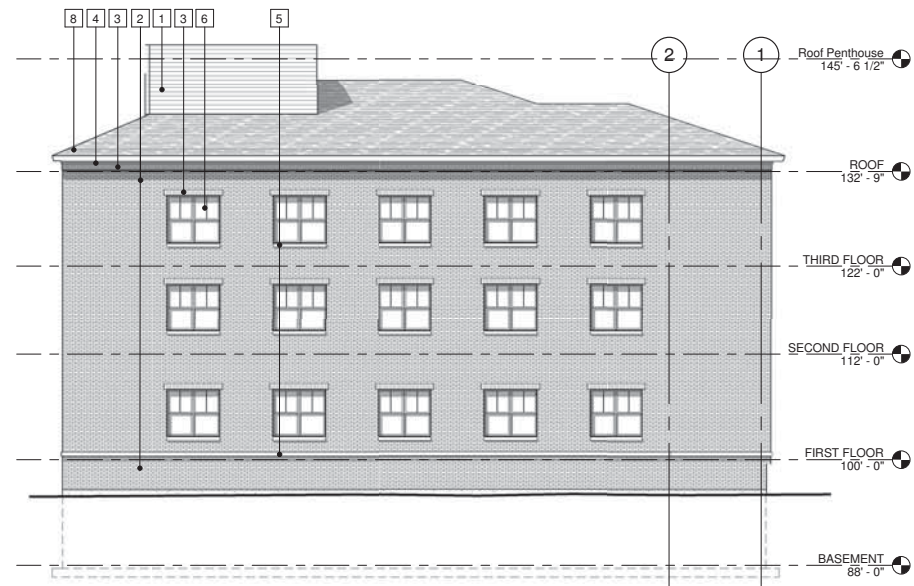
Edgewood College  
Madison WI

2013.17.00

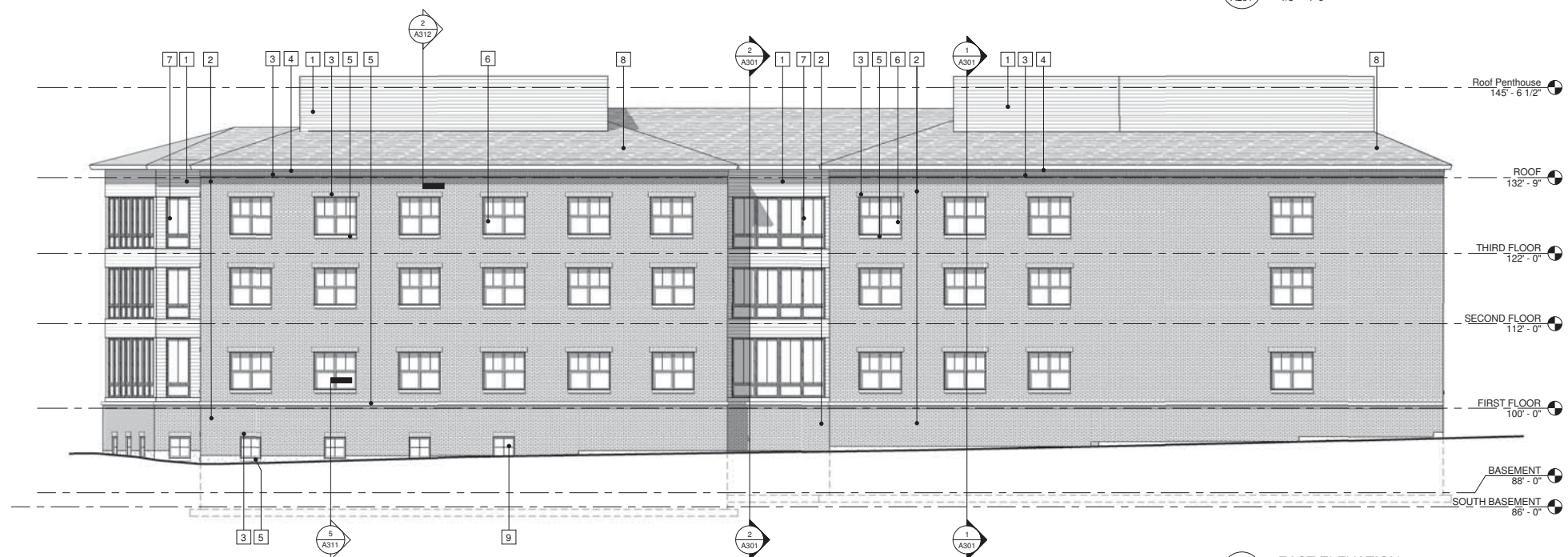
Date	Issuance/Revisions	Symbol
01/22/14	Plan Commission Submittal	

**BUILDING  
ELEVATIONS**

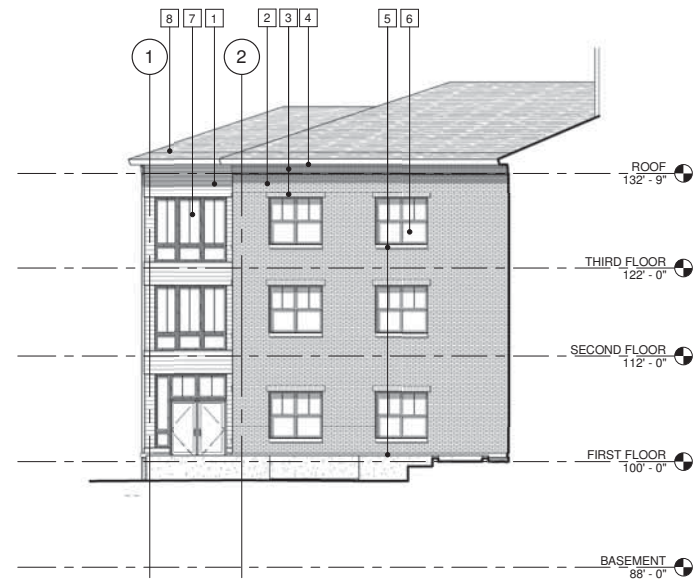
**A201**



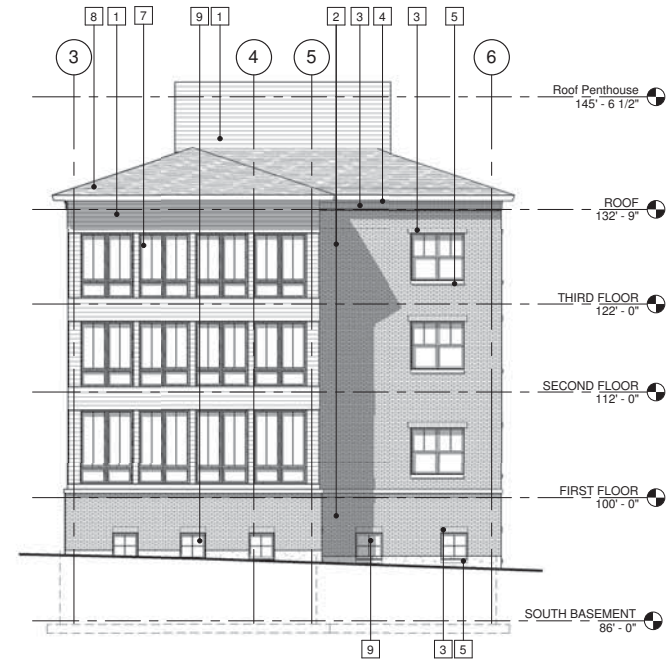
2 NORTH ELEVATION  
A201 1/8" = 1'-0"



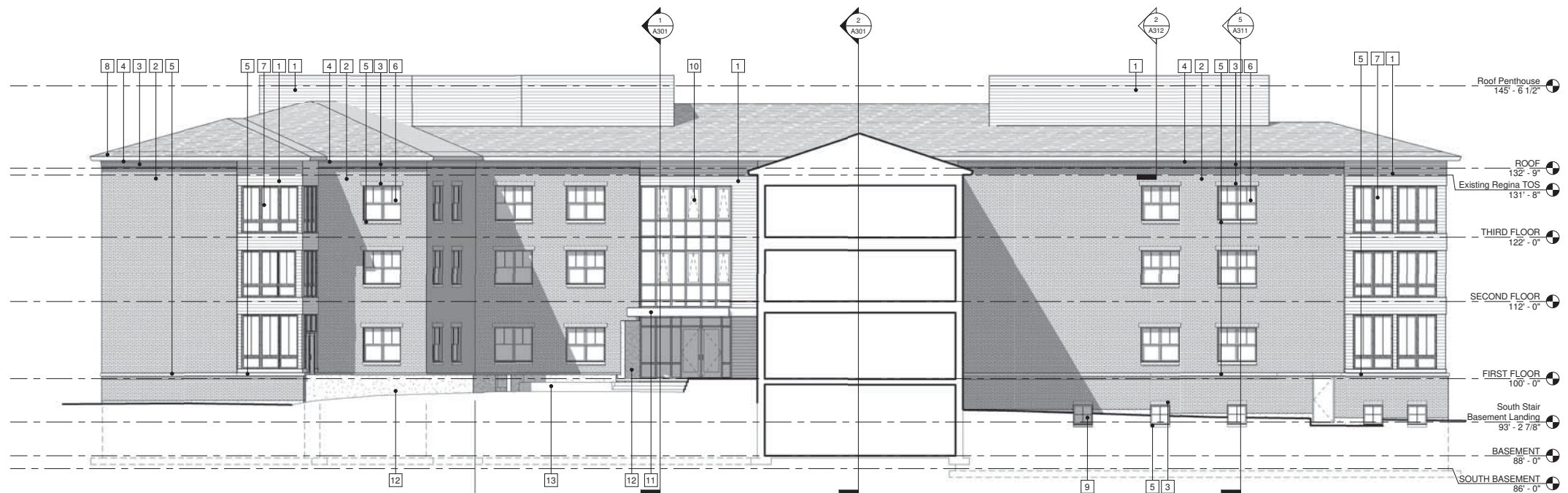
1 EAST ELEVATION  
A201 1/8" = 1'-0"



**3 NORTH EAST ELEVATION**  
1/8" = 1'-0"



**2 SOUTH ELEVATION**  
1/8" = 1'-0"



**1 WEST ELEVATION**  
1/8" = 1'-0"

Notes:

ELEVATION KEY NOTES

- 1 METAL SIDING
- 2 BRICK VENEER
- 3 BRICK SOLDIER COURSE
- 4 BRICK ROWLOCK COURSE
- 5 MANUFACTURED STONE SILL / HORIZONTAL BAND
- 6 GLAZED ALUMINUM OPERABLE WINDOW UNIT
- 7 GLAZED ALUMINUM FIXED WINDOW UNIT
- 8 SHINGLE ROOFING
- 9 GLAZED ALUMINUM FIXED WINDOW UNIT W/ WINDOW WELL
- 10 GLAZED ALUMINUM CURTAIN WALL SYSTEM W/ OPERABLE VENTS
- 11 CANOPY
- 12 CONCRETE SITE WALL
- 13 CONCRETE BENCH / STAIRS

**PRELIMINARY**  
NOT FOR CONSTRUCTION

**Regina Hall -  
Addition and  
Alterations**

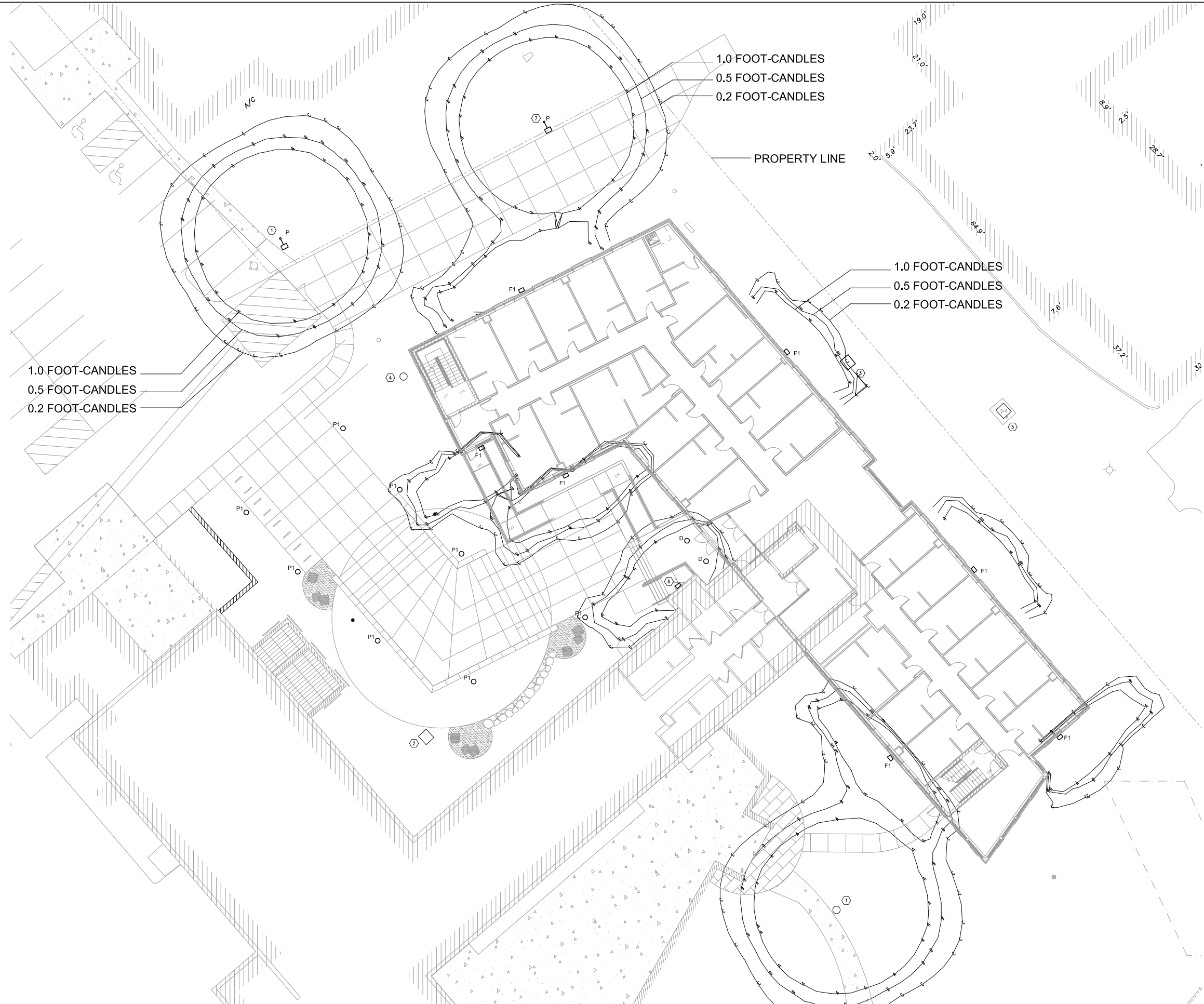
**Edgewood College**  
Madison WI

2013.17.00

Date	Issuance/Revisions	Symbol
01/22/14	Plan Commission Submittal	

**BUILDING  
ELEVATIONS**

**A202**



1.0 FOOT-CANDLES  
0.5 FOOT-CANDLES  
0.2 FOOT-CANDLES

1.0 FOOT-CANDLES  
0.5 FOOT-CANDLES  
0.2 FOOT-CANDLES

PROPERTY LINE

1.0 FOOT-CANDLES  
0.5 FOOT-CANDLES  
0.2 FOOT-CANDLES

**GENERAL NOTES:**

1. LIGHT LEVELS SHOWN ARE CALCULATED AT 4' ABOVE GRADE.

**FLAG NOTES:**

- ① EDGEWOOD COLLEGE WILL REMOVE THE EXISTING POLE LIGHT. ELECTRICAL CONTRACTOR TO INSTALL NEW POLE LIGHT ON EXISTING POLE BASE.
- ② EXISTING TO REMAIN MG&E TRANSFORMER FOR REGINA HALL.
- ③ NEW MG&E TRANSFORMER.
- ④ EDGEWOOD COLLEGE WILL REMOVE THE EXISTING POLE LIGHT. ELECTRICAL CONTRACTOR REMOVE EXISTING POLE BASE. MAINTAIN POWER TO DOWNSTREAM POLE LIGHTS.
- ⑤ EXISTING TO REMAIN MG&E TRANSFORMER FOR CAMPUS SCHOOL.
- ⑥ EXISTING BUILDING MOUNTED WALL SCONCE TO REMAIN.
- ⑦ REFER TO DETAIL 2/E001 FOR POLE BASE DETAIL.

**Regina Hall -  
Addition and  
Alterations**

Edgewood College  
Madison, WI  
2013.17.00

Date	Issuance/Revisions	Symbol
01/22/14	Plan Commission Submittal	

**ELECTRICAL  
SITE PLAN**

1 ELECTRICAL SITE PLAN  
E003 1" = 10'-0"

