

bikemadison 2011 Paths 43 miles
Lanes 87 miles
Curb lanes 14 miles
Routes 116 miles

- Bicycling Network**
- Off street paved path
 - Bicycle boulevard
 - Bike lane or paved shoulder
 - Wide curb lane
 - On street route
 - Off street unpaved path
 - Bicycle route on sidewalk
- Map Features**
- Bicycling prohibited or not recommended
 - Through street (higher traffic volumes)
 - Local street
 - Railroad
 - Traffic signal
- Facilities**
- Bicycle shop
 - Bicycle shop with rentals
 - Bus transfer point
 - Dane County Regional Airport
 - School
 - Museum
 - Library
 - Beach
- Map Features**
- City limits
 - Outside city limits
 - Park or open space
 - UW campus
 - Lake, river or stream
 - Over/underpass

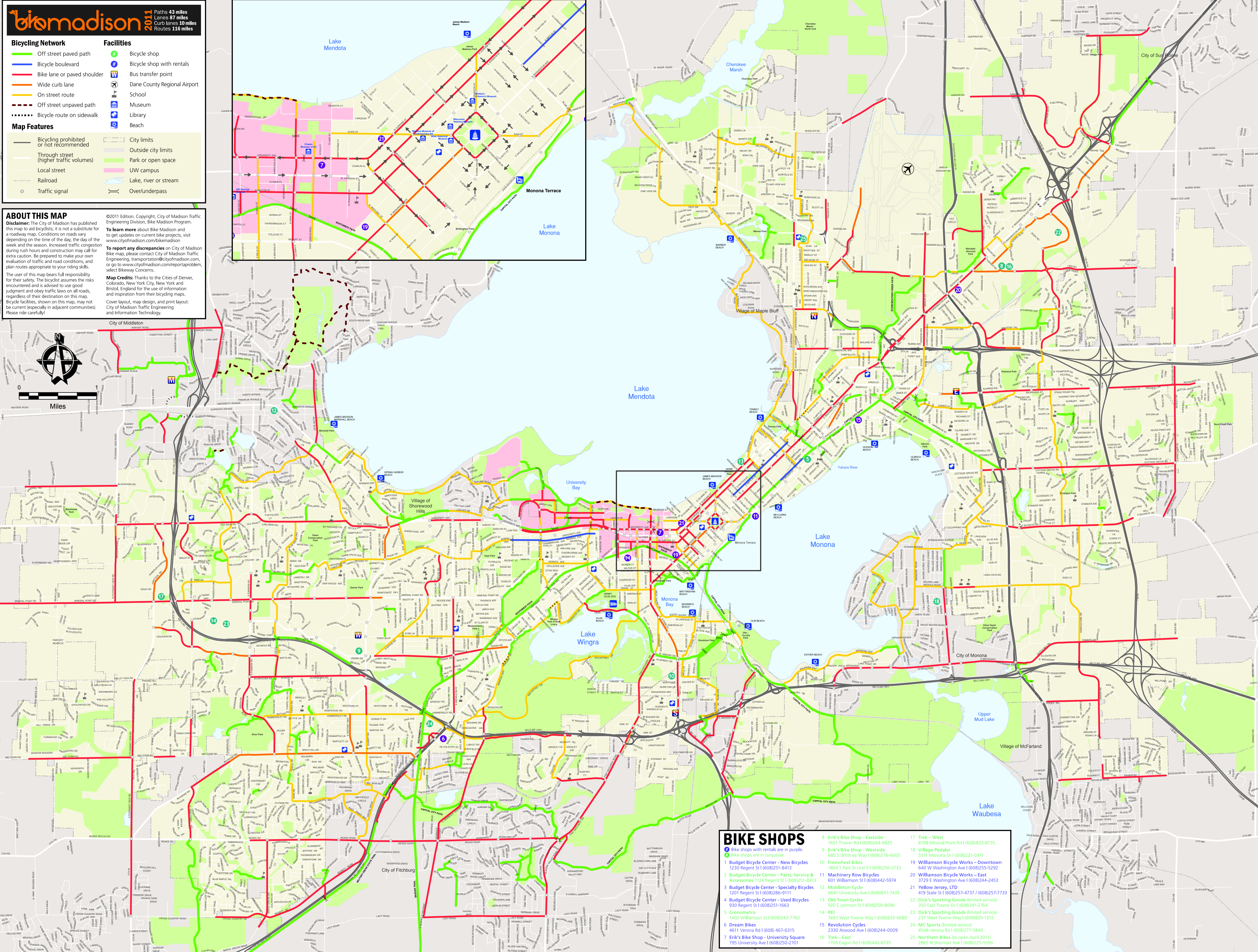
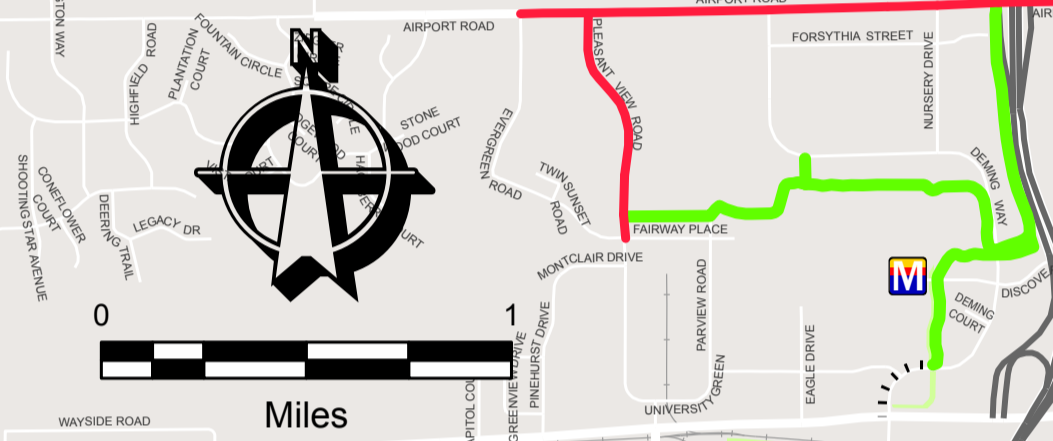
ABOUT THIS MAP

Disclaimer: The City of Madison has published this map to aid bicyclists; it is not a substitute for a roadway map. Conditions on roads vary depending on the time of the day, the day of the week and the season. Increased traffic congestion during rush hours and construction may call for extra caution. Be prepared to make your own evaluation of traffic and road conditions, and plan routes appropriate to your riding skills. The user of this map bears full responsibility for their safety. The bicyclist assumes the risks encountered and is advised to use good judgment and obey traffic laws on all roads, regardless of their destination on this map. Bicycle facilities, shown on this map, may not be current (especially in adjacent communities). Please ride carefully!

©2011 Edition. Copyright, City of Madison Traffic Engineering Division, Bike Madison Program. To learn more about Bike Madison and to get updates on current bike projects, visit www.cityofmadison.com/bikemadison

To report any discrepancies on City of Madison Bike map, please contact City of Madison Traffic Engineering, transport@cityofmadison.com, or go to www.cityofmadison.com/reportaproblem, select BikeWay Concerns.

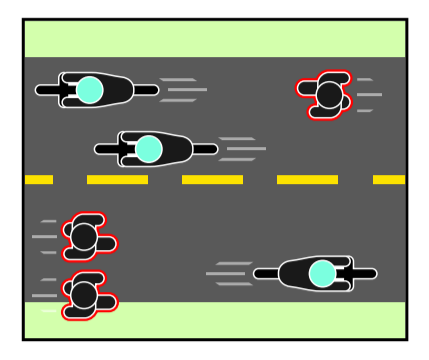
Map Credits: Thanks to the Cities of Denver, Colorado, New York City, New York and Bristol, England for the use of information and inspiration from their bicycling maps. Cover layout, map design, and print layout: City of Madison Traffic Engineering and Information Technology.



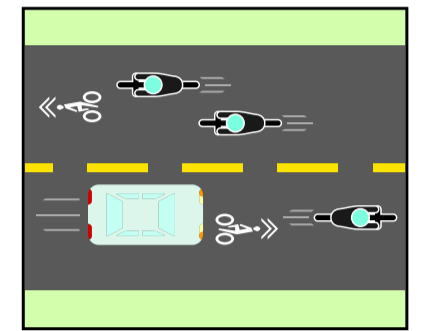
CITY OF MADISON BIKE MAP

Explanation of Bicycling Network & Features

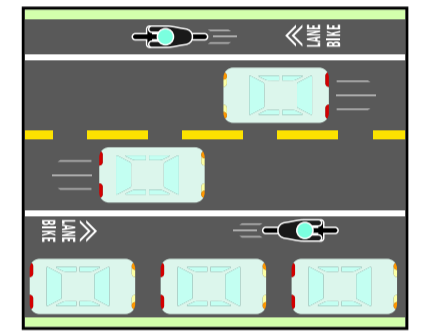
PLEASE NOTE
Select your route to match your skill and comfort level. Obey all traffic signs, signals and laws. Ride courteously and safely.



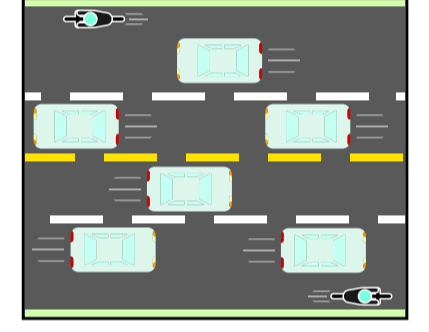
OFF STREET PAVED PATH
Off street paved paths are shared use routes for cyclists, pedestrians and other non-motorized traffic. Ride responsibly and share the path. Slow down when approaching other traffic and give an audible warning before passing. When not passing, keep to the right.



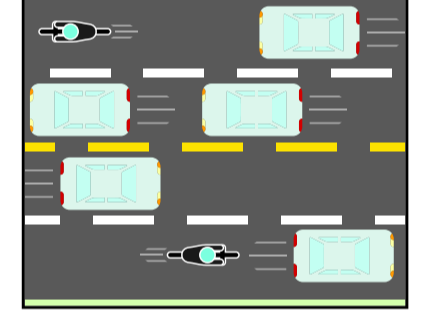
BICYCLE BOULEVARD
Bicycle boulevards are low speed, low (motor vehicle) traffic volume, local streets that are designated for use primarily by bicyclists. Motor vehicles are welcome on bicycle boulevards. Special blue street signs and shared lane (sharrow) pavement markings signify that motor vehicles must be attentive to the large numbers of cyclists and lower their speeds.



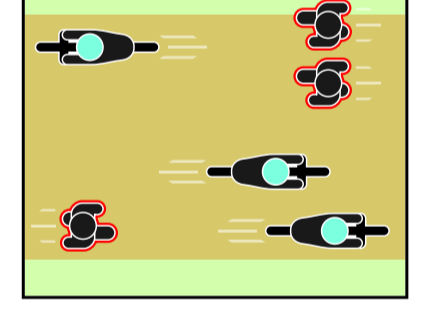
BIKE LANE OR PAVED SHOULDER
A bicycle lane is a separate lane on the street for bicyclists. This lane is sometimes shared with parked cars, buses or right turning vehicles.



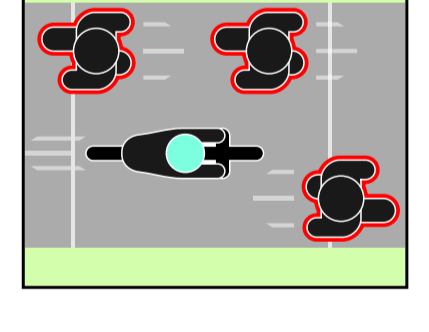
WIDE CURB LANE
A wide curb lane is the traffic lane next to the curb (the right most lane) which is extra wide so a motorist can safely pass a bicyclist without having to change lanes. There is no line painted on the street separating motorists from the bicyclists.



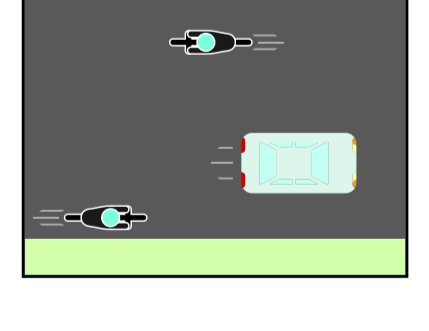
ON STREET ROUTE
On street routes are sections of bike routes, on streets, which have "bike route" signs, but do not have other bicycle facilities. These "on street routes" are often used by bicyclists, who are comfortable sharing the road with motor vehicles, to access areas not yet served by other bicycle facilities.



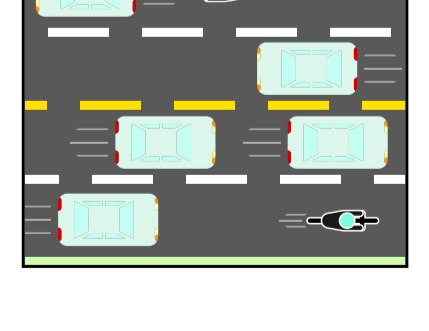
OFF STREET UNPAVED PATH
An off street, unpaved path is similar in use to the mixed-use, paved path described above, but may have rugged terrain more suitable for mountain bikes.



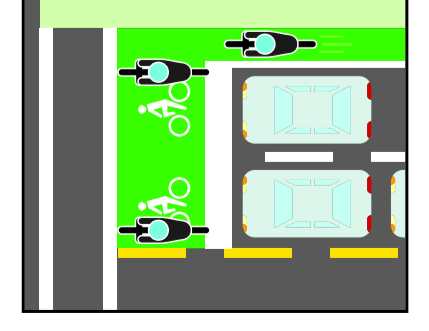
BICYCLE ROUTE ON SIDEWALK
Due to difficult roadway conditions in a few areas, bike routes on sidewalks help insure route continuity. Bicycling is allowed on sidewalks, EXCEPT where buildings are not set back from the sidewalk (such as commercial districts). Always yield to pedestrians.



LOCAL STREET
Local or collector streets, without bicycle facilities, have relatively low traffic volumes and lower speeds.



THROUGH STREET (HIGHER TRAFFIC VOLUMES)
Arterial streets, without bicycle facilities, have higher volumes and speeds. These street are not recommended for inexperienced cyclists.



BIKE BOXES
Bike boxes are rectangles, painted on the pavement at intersections, which move car traffic back several feet from the crossing and allow space for bicyclists to position themselves in front of waiting traffic. Bike boxes are intended to reduce bicycle and car collisions, especially those between drivers turning right and bicyclists going straight by providing greater visibility.

- BIKE SHOPS**
- 1 Bike shops with rentals are in purple. Bike shops are in turquoise.
 - 1 Budget Bicycle Center - New Bicycles 1230 Regent St | (608)251-8413
 - 2 Budget Bicycle Center - Parts, Service & Accessories 1124 Regent St | (608)251-8413
 - 3 Budget Bicycle Center - Specialty Bicycles 6641 University Ave | (608)256-9111
 - 4 Budget Bicycle Center - Used Bicycles 930 Regent St | (608)251-1623
 - 5 Cronometro 1402 Williamson St | (608)243-7760
 - 6 Dream Bikes 4611 Verona Rd | (608) 467-6315
 - 7 Erik's Bike Shop - University Square 795 University Ave | (608)250-2701
 - 8 Erik's Bike Shop - Eastside 1651 Thayer Rd | (608)244-9825
 - 9 Erik's Bike Shop - Westside 680 S Whitney Way | (608)278-9000
 - 10 Freewheel Bikes 1804 S Park St Unit 51 | (608)256-3733
 - 11 Machinery Row Bicycles 601 Williamson St | (608)442-5974
 - 12 Middleton Cycle 6641 University Ave | (608)831-7433
 - 13 Old Town Cycles 920 E Johnson St | (608)259-8696
 - 14 REI 7483 West Towne Way | (608)833-6680
 - 15 Revolution Cycles 2330 Atwood Ave | (608)244-0009
 - 16 Trek - East 1706 Eagon Rd | (608)442-8735
 - 17 Trek - West 8108 Mineral Point Rd | (608)833-8735
 - 18 Village Pedaler 5511 Monona Dr | (608)221-0311
 - 19 Williamson Bicycle Works - Downtown 640 W Washington Ave | (608)255-5292
 - 20 Williamson Bicycle Works - East 3729 E Washington Ave | (608)244-2453
 - 21 Yellow Jersey, LTD 419 State St | (608)257-4737 / (608)257-7733
 - 22 Dick's Sporting Goods (limited service) 3501 East Towne Dr | (608)241-2764
 - 23 Dick's Sporting Goods (limited service) 237 West Towne Way | (608)829-1313
 - 24 MC Sports (limited service) 4545 Verona Rd | (608)277-5840
 - 25 Northern Bikes (to open April 2011) 2865 N Sherman Ave | (608)225-1099