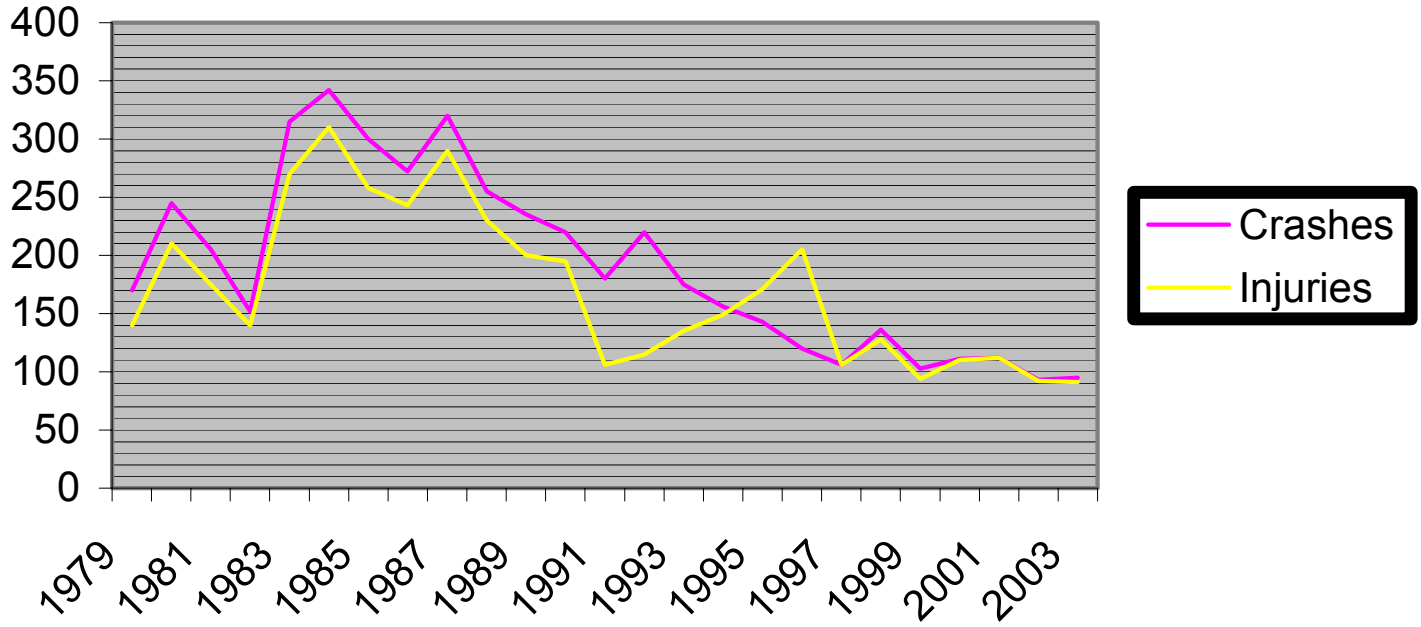
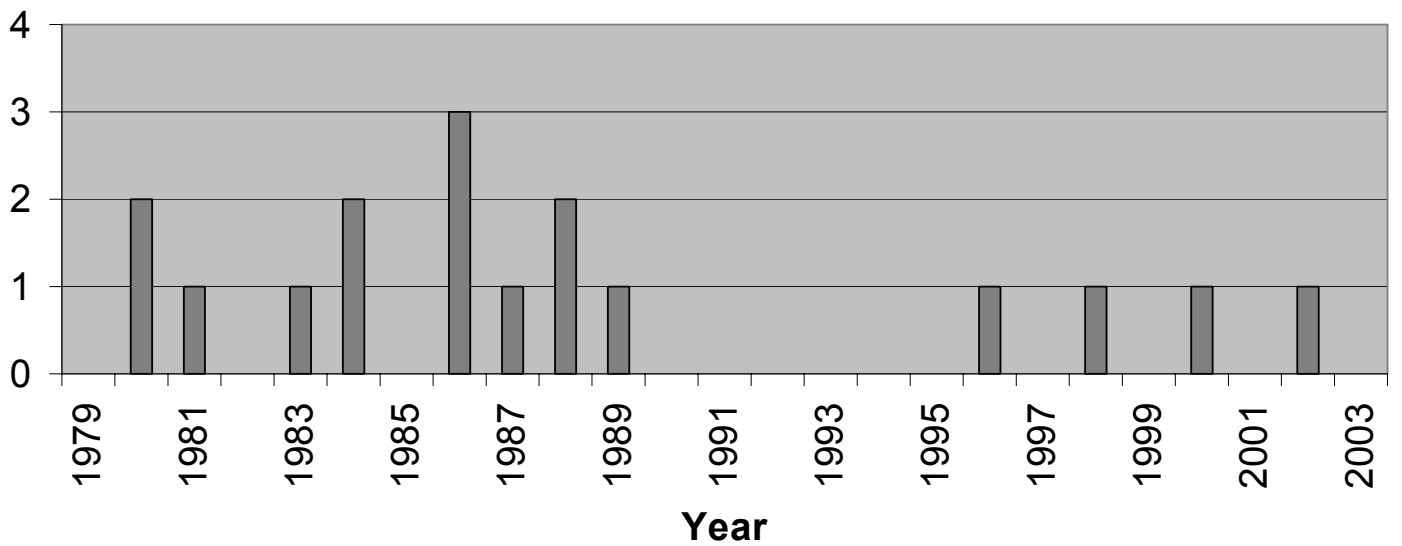


BICYCLE CRASHES

Bike Crashes, Injuries, and Fatalities City of Madison 1979 - 2003



Bike Crash Fatalities City of Madison 1979 - 2003



BICYCLE CRASH SUMMARY

CRASHES / INJURIES / FATALITIES

Number of Reported Bicycle Crashes	95
Number of intersection crashes	66
Number of non-intersection street segment crashes.....	29
Number of injury crashes	91
Number of injuries.....	91
Number of fatal crashes.....	0
Number of fatalities	0

CRASH HIGHLIGHTS

	<u>Percent</u>
Change In Total Bicycle Crashes From 2002	2.2%
Percent of Crashes Involving a Motor Vehicle	100%
Percentage of Crashes Involving an Injury to the Cyclist	95.8%
Most Common Age Group of Bicyclists Involved in Crashes	
20-24 years of age	24%
Most Common Time Period When Crashes Occurred	
4 p.m - 8 p.m.....	37%
Noon - 4 p.m.	28%
Most Common Factors Contributing to Crash	
Motorist: Failed to yield right-of-way.....	46%
Bicyclists: Failed to yield right-of-way	14%
Crashes Involving Alcohol	
Bicyclist noted as drinking.....	2%
Motorist noted as drinking.....	0%
Crashes Involving Citations	
Citation issued to motorist	40%
Citation issued to bicyclist.....	24%

BICYCLE CRASH STATISTICS

Number of all reported bicycle crashes 95

CRASH SEVERITY, LOCATION AND STREET TYPE

Crash Severity	Number of Crashes	% of All Crashes
Property Damage Only Crash	4	4.2%
Injury Crash	91	95.8%
Fatal Crash	0	
TOTAL	95	100.0%

Crash Location	Number of Crashes	% of All Crashes
Non-Intersection Street Segment	29	30.5%
Intersection	66	69.5%
Signalized	33	50.0%
Stop / Yield	31	47.0%
Other	2	3.0%
TOTAL	95	100.0%

TYPE OF COLLISION

Right angle at intersection	36	37.9%
Left turn / through - opposite directions	22	23.2%
Angle crash at mid block	14	14.7%
Sideswipe - same direction	7	7.4%
Other	16	16.8%
TOTAL	95	100.0%

MOST COMMON BICYCLE / MOTOR VEHICLE CRASH FACTORS

Motorist failed to yield	44	46.3%
Bicyclist failed to yield	13	13.7%
Bicyclist disregarded traffic signal	4	4.2%
Other	34	35.8%
TOTAL	95	100.0%

AGE GROUP OF BICYCLISTS INVOLVED IN CRASHES

	Population Percentage (1990 Census)	Number of Crashes	% of All Crashes
0 - 4	6.2%	0	0.0%
5 - 9	5.4%	4	4.3%
10 - 14	4.5%	5	9.8%
15 - 19	8.5%	14	15.1%
20 - 24	16.0%	24	25.8%
25 - 44	35.8%	32	34.4%
45 - 64	14.3%	12	12.9%
65 +	9.3%	1	1.1%
Unknown	0.0%	1	1.1%
TOTAL	100.0%	93	100.0%

CONDITIONS AT TIME OF CRASH

Time of Day

7-9a	11	11.6%
9a-Noon	10	10.5%
Noon-4p	27	28.4%
4-6p	23	24.2%
6-9p	15	15.8%
9p-7a	9	9.5%
Unknown	0	0.0%

Weather

Clear	61	64.2%
Cloudy	31	32.6%
Rain	3	3.2%
Snow/Sleet	0	0.0%
Fog/Mist	0	0.0%
Unknown	0	0.0%

Lighting

Daylight	75	78.9%
Night	15	15.8%
Dawn/Dusk	5	5.3%
Unknown	0	0.0%

Roadway

Dry	85	89.4%
Wet	6	6.3%
Snow/Icy	2	2.1%
Other	1	1.1%
Unknown	1	1.1%

