



City Of Madison
Truck Route Map

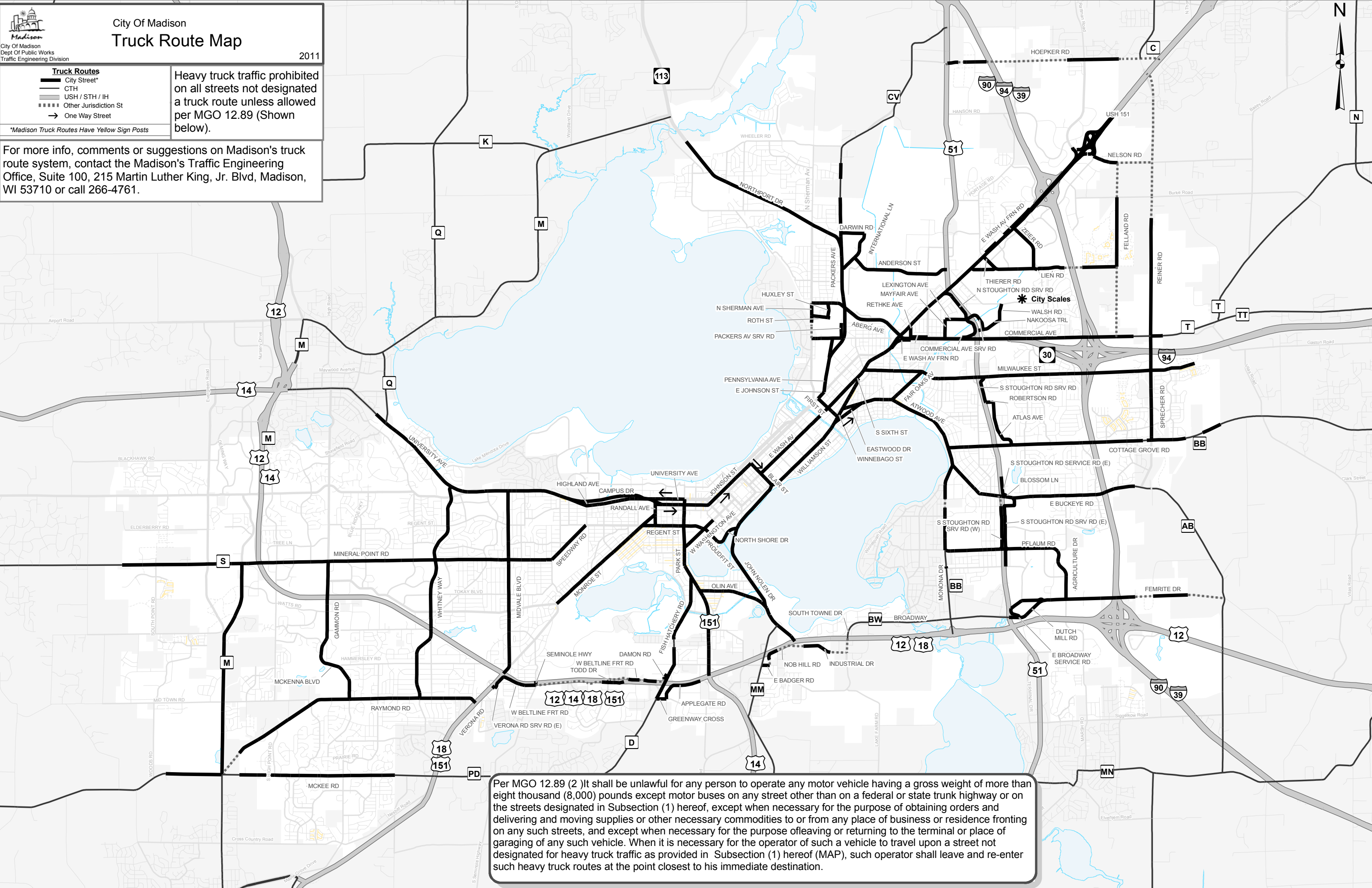
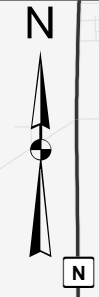
City Of Madison
 Dept Of Public Works
 Traffic Engineering Division

2011

- Truck Routes**
- City Street*
 - CTH
 - USH / STH / IH
 - Other Jurisdiction St
 - One Way Street

Heavy truck traffic prohibited on all streets not designated a truck route unless allowed per MGO 12.89 (Shown below).

For more info, comments or suggestions on Madison's truck route system, contact the Madison's Traffic Engineering Office, Suite 100, 215 Martin Luther King, Jr. Blvd, Madison, WI 53710 or call 266-4761.



Per MGO 12.89 (2) It shall be unlawful for any person to operate any motor vehicle having a gross weight of more than eight thousand (8,000) pounds except motor buses on any street other than on a federal or state trunk highway or on the streets designated in Subsection (1) hereof, except when necessary for the purpose of obtaining orders and delivering and moving supplies or other necessary commodities to or from any place of business or residence fronting on any such streets, and except when necessary for the purpose of leaving or returning to the terminal or place of garaging of any such vehicle. When it is necessary for the operator of such a vehicle to travel upon a street not designated for heavy truck traffic as provided in Subsection (1) hereof (MAP), such operator shall leave and re-enter such heavy truck routes at the point closest to his immediate destination.