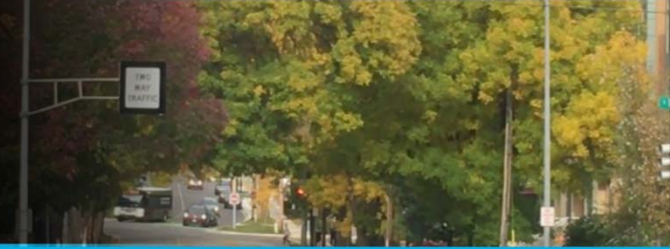




Wilson Street

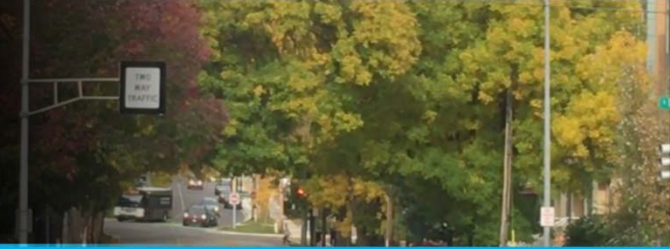


2018 Transportation Study

Welcome to the Wilson Street Corridor Study Public Involvement Meeting



Wilson Street



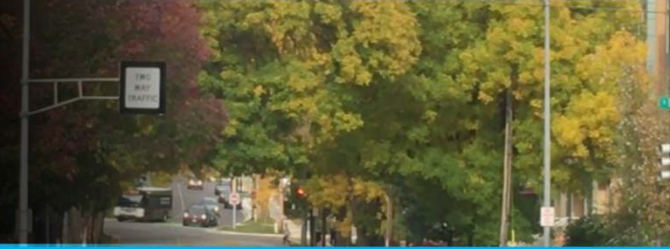
2018 Transportation Study

Goals & Objectives

- Provide safety for all modes of transportation
- Improve bike connection to the square from the south and from the east.
- Provide pleasing entrance to downtown and Capitol
- Satisfy parking and loading needs
- Preserve healthy canopy/terrace
- Provide safe and comfortable pedestrian crossings
- Preserve existing infrastructure investments
- Provide a corridor vision for Wilson Street
- Others?



Wilson Street



2018 Transportation Study

Our Madison – Inclusive, Innovative, & Thriving

Imagine Madison - Transportation Goal

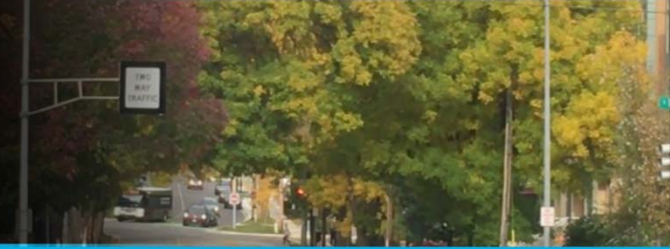
Madison will have a safe, efficient, and affordable regional transportation system that offers a variety of choices among transportation modes.

Department of Transportation Mission

To develop and maintain a safe, efficient, economical, equitable, and sustainable transportation system for Madison's residents and visitors in a way that is consistent with the City's land use system and regional transportation goals.



Wilson Street



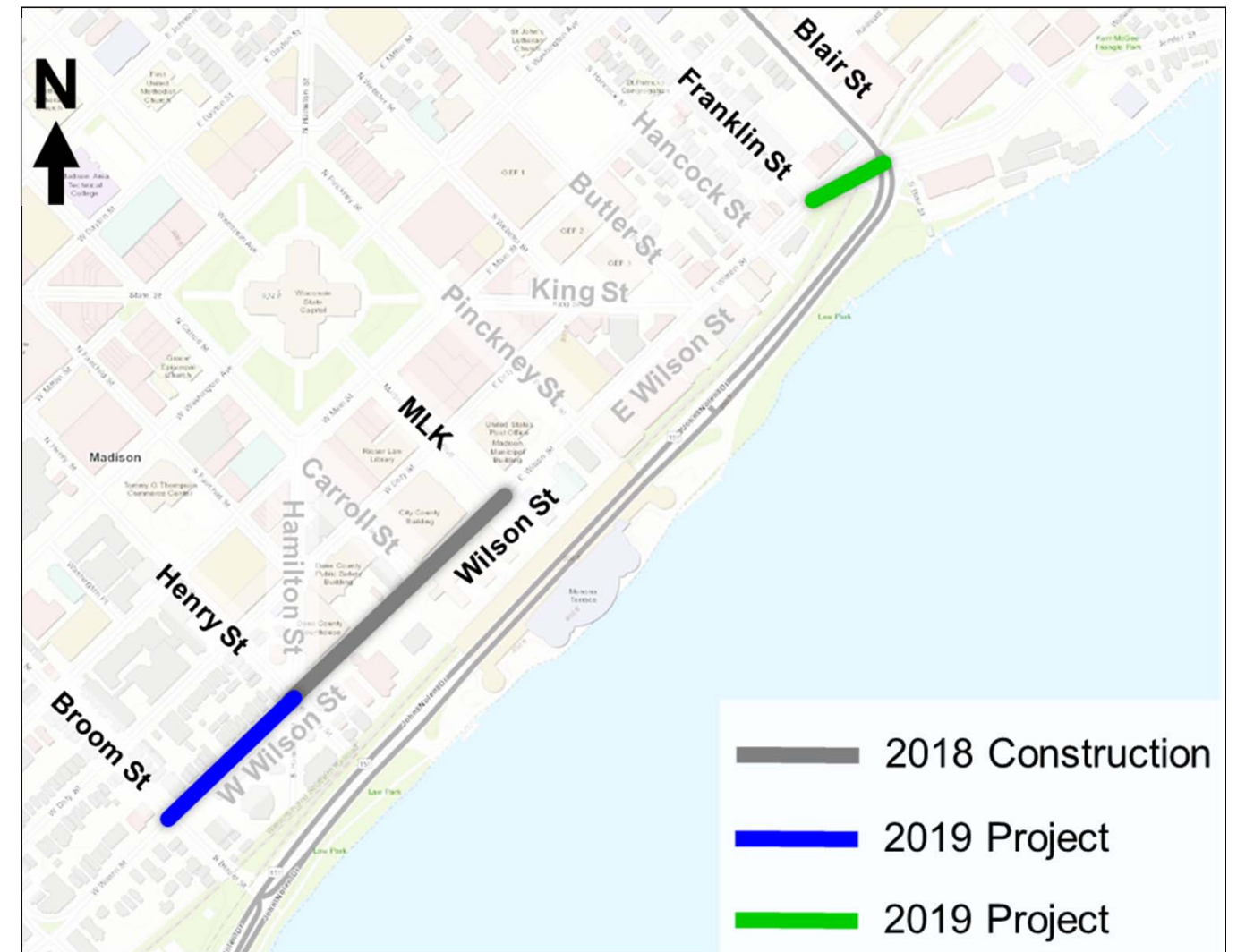
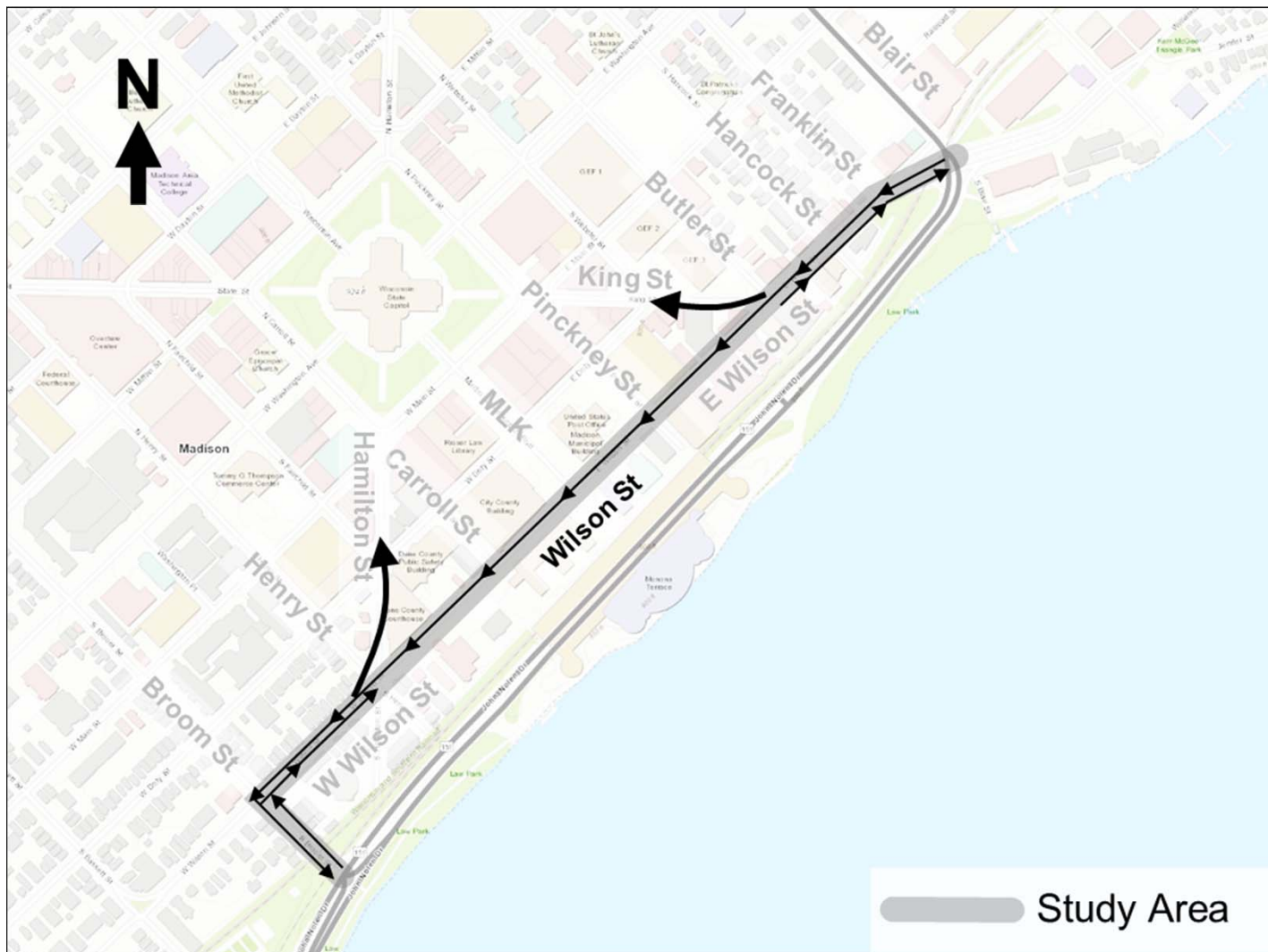
2018 Transportation Study

Preliminary Goals & Objectives – Do you have suggestions?

Safety	Bicycles	Motor Vehicles/ Entrance	Parking	Forestry	Pedestrians	Existing Investment	Corridor
<ul style="list-style-type: none"> • Provide safety for all modes of transportation 	<ul style="list-style-type: none"> • Improve bike connection to square 	<ul style="list-style-type: none"> • Provide pleasing entrance to downtown and Capitol 	<ul style="list-style-type: none"> • Satisfy parking and loading needs 	<ul style="list-style-type: none"> • Preserve healthy canopy and terrace 	<ul style="list-style-type: none"> • Safe and comfortable crossings 	<ul style="list-style-type: none"> • Preserve existing Wilson Street investments 	<ul style="list-style-type: none"> • Provide vision for full Wilson Street Corridor

Others?

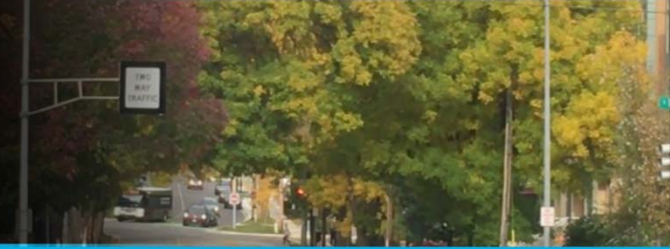
Study Limits



- 2018 Construction
- 2019 Project
- 2019 Project

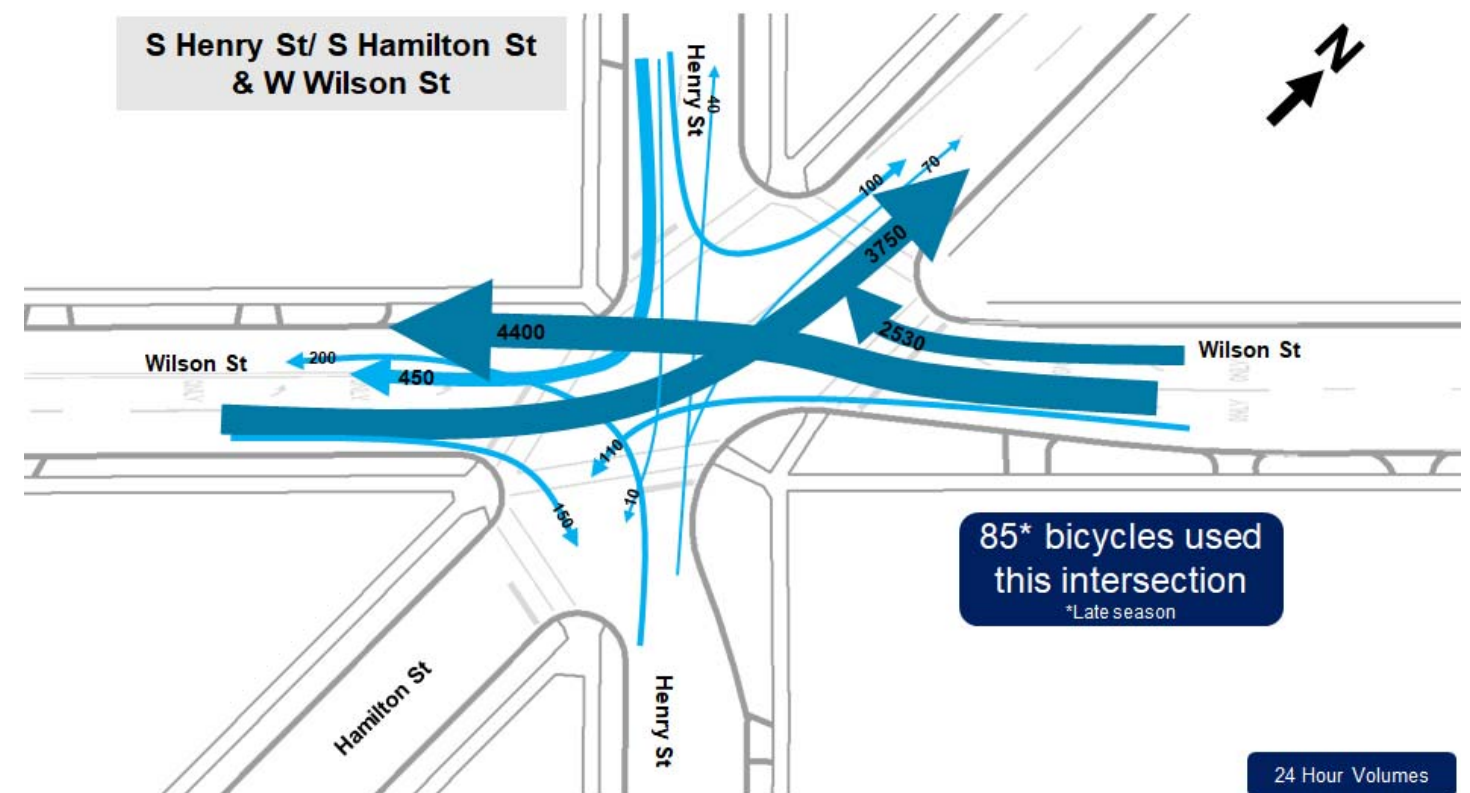
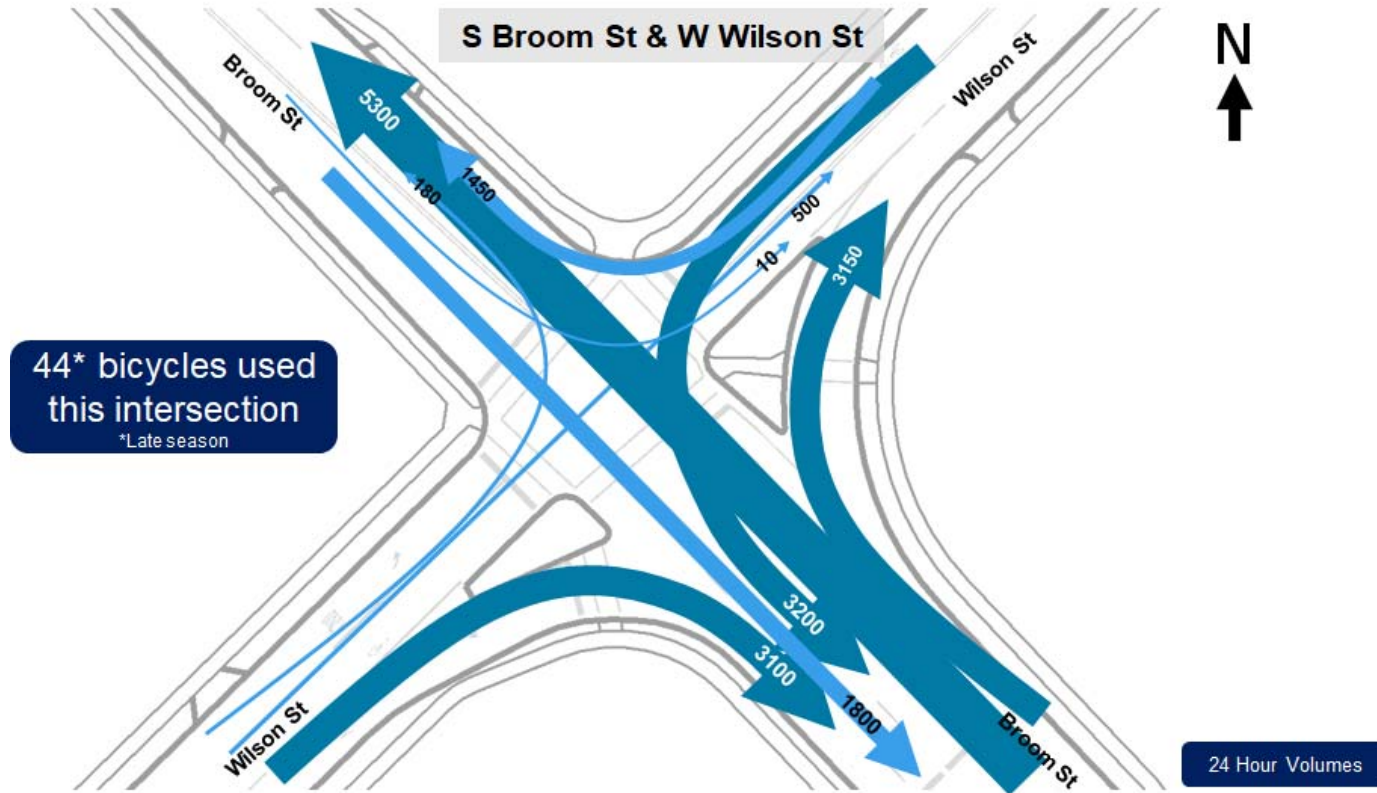


Wilson Street

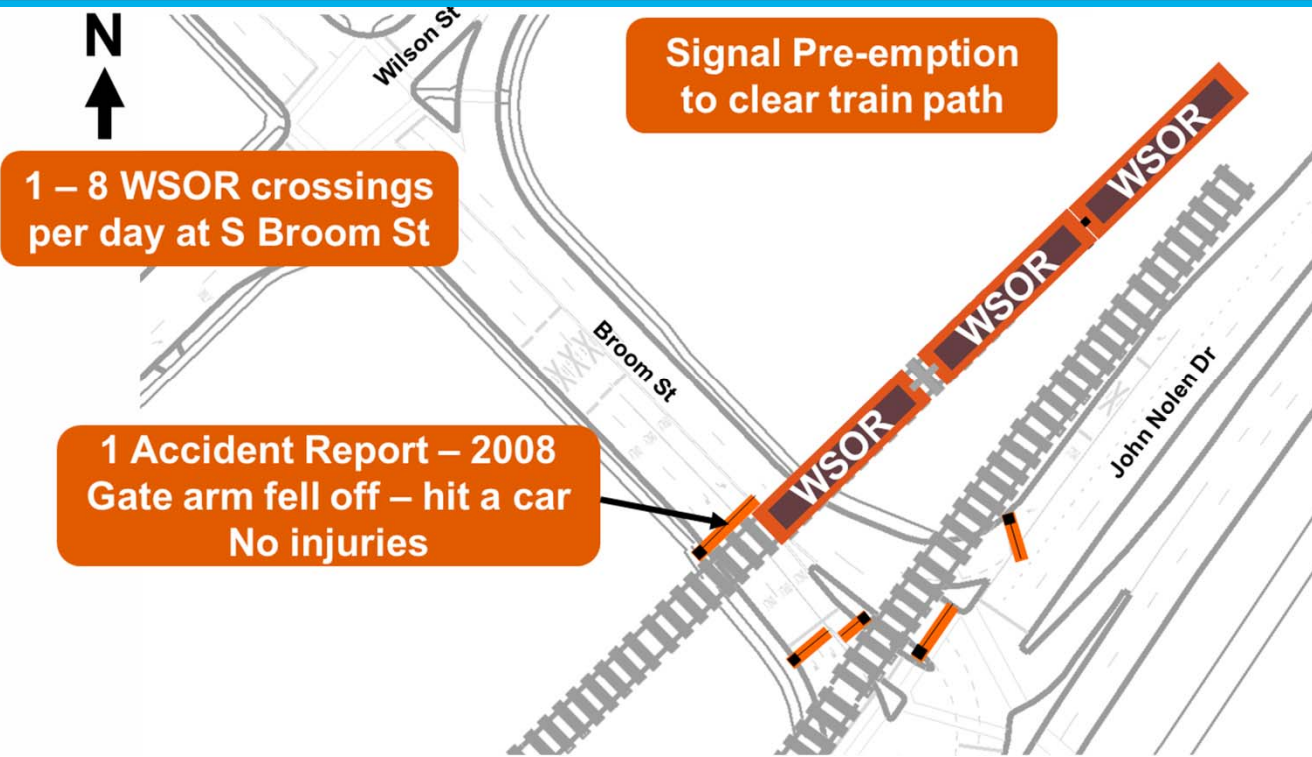


2018 Transportation Study

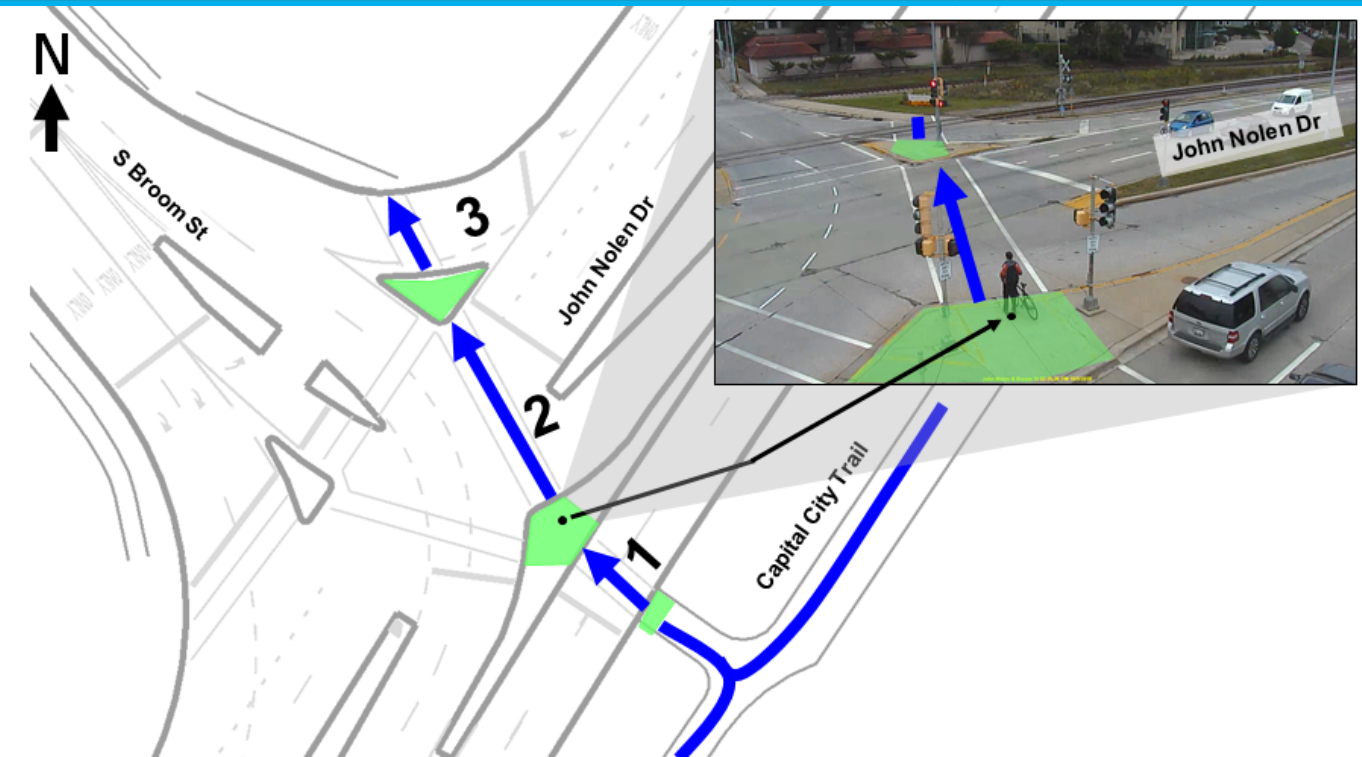
Traffic Movement Volumes



Wisconsin & Southern Railroad

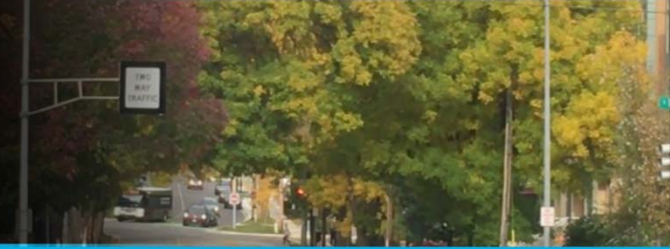


Difficult S Broom St & John Nolen Dr Crossing



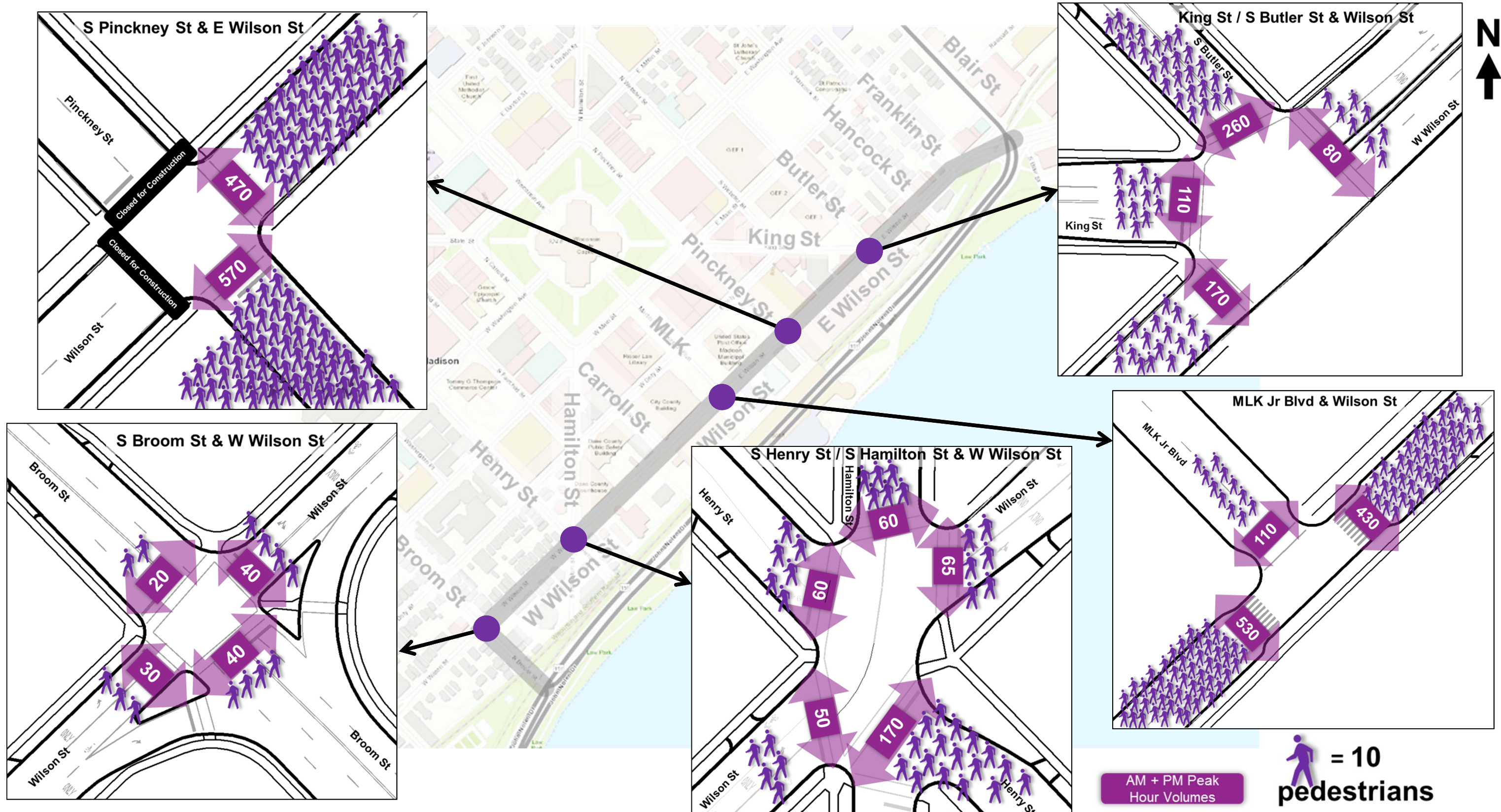


Wilson Street



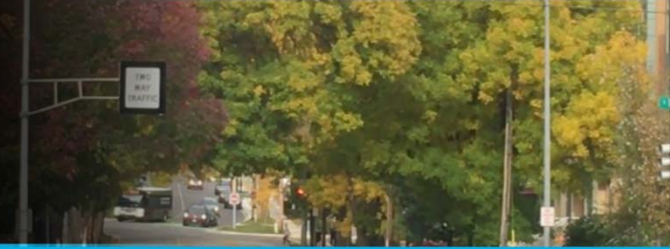
2018 Transportation Study

Pedestrian Volumes – Counted Fall 2018, Summer volumes could be greater





Wilson Street



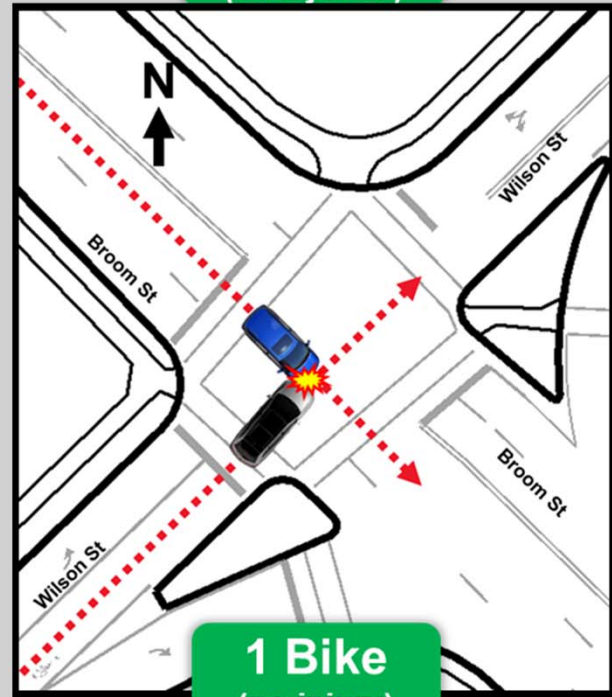
2018 Transportation Study

5 Year Crash History (2013-2017)

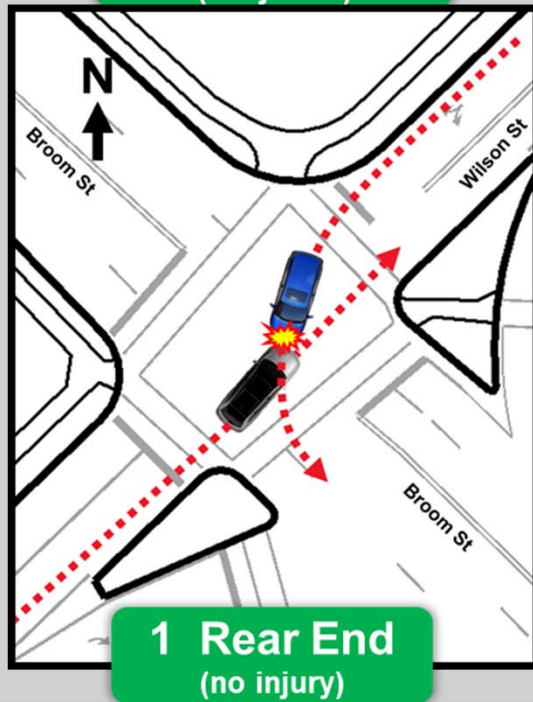
S Broom St & W Wilson St

24 Angle
(14 injuries)

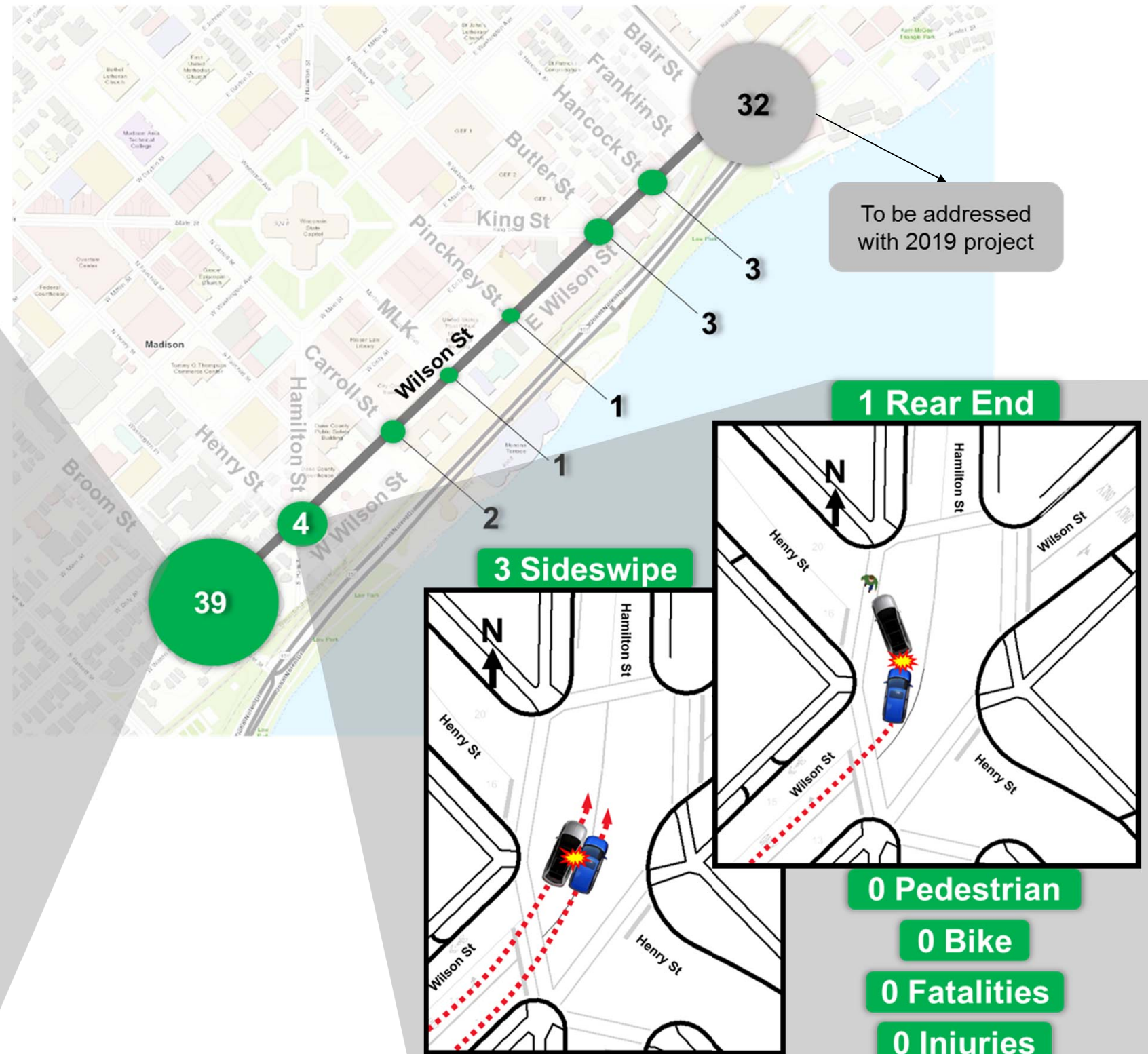
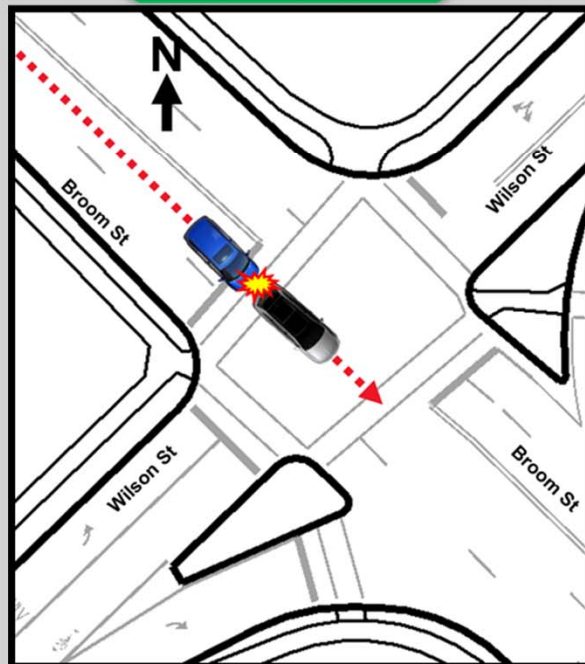
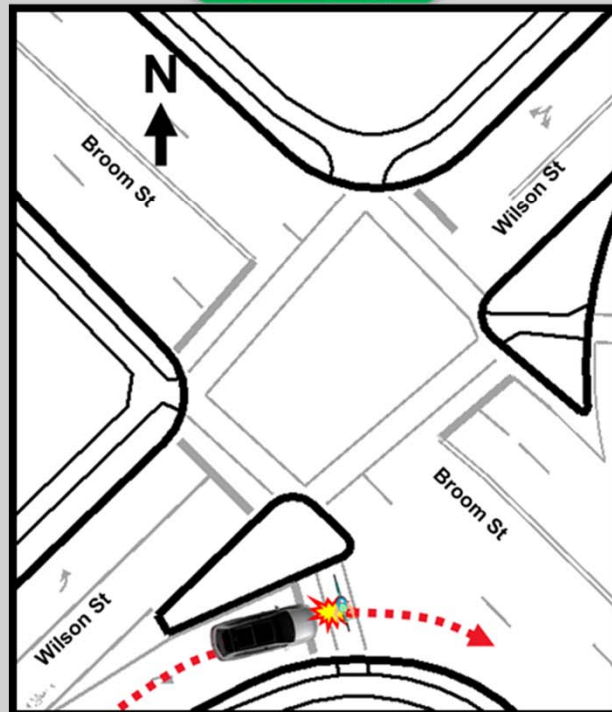
0 Fatalities



13 Left Turns
(6 injuries)



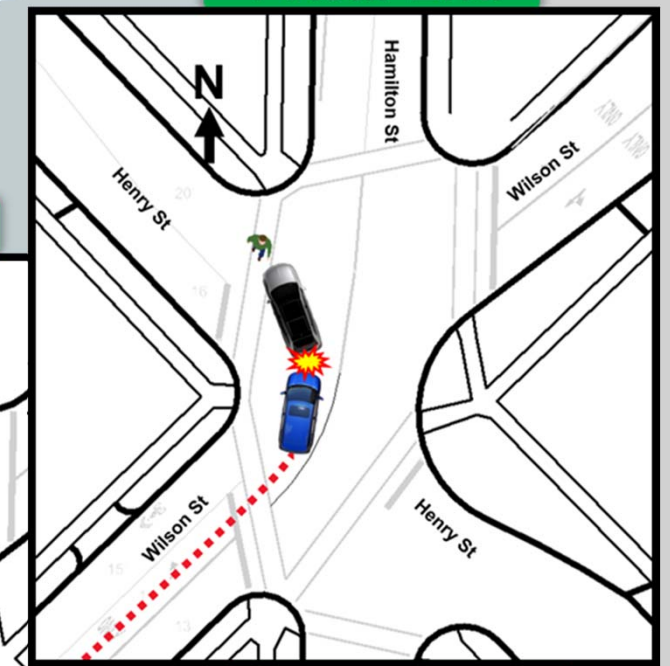
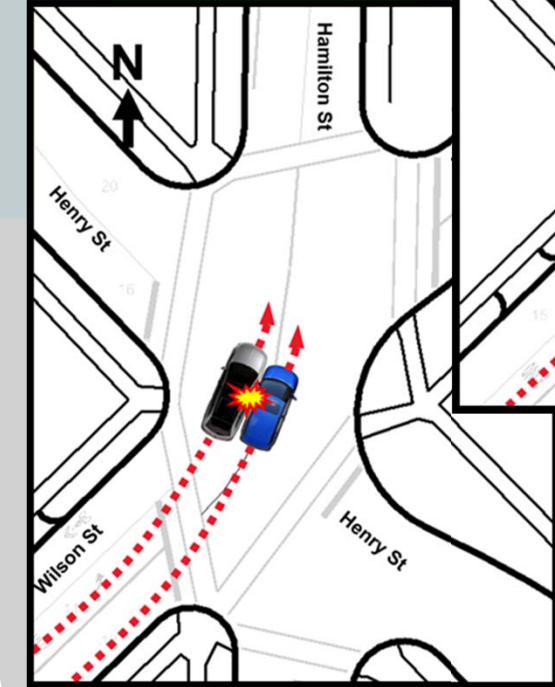
1 Rear End
(no injury)



To be addressed with 2019 project

1 Rear End

3 Sideswipe



0 Pedestrian

0 Bike

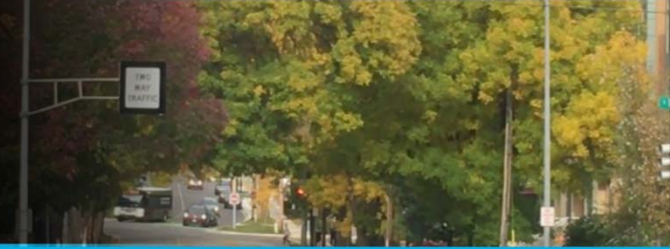
0 Fatalities

0 Injuries

S Henry St, S Hamilton St & W Wilson St

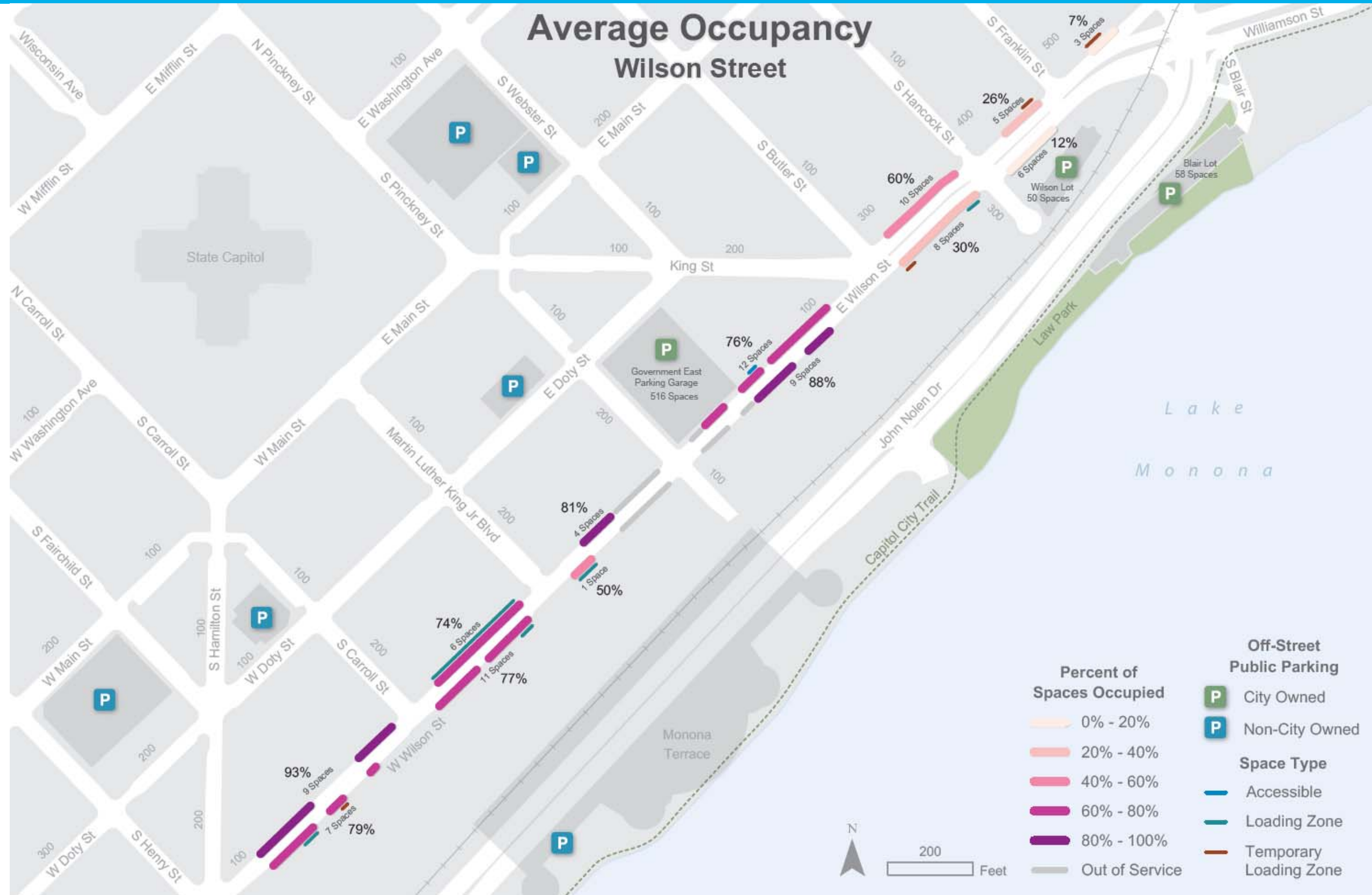


Wilson Street



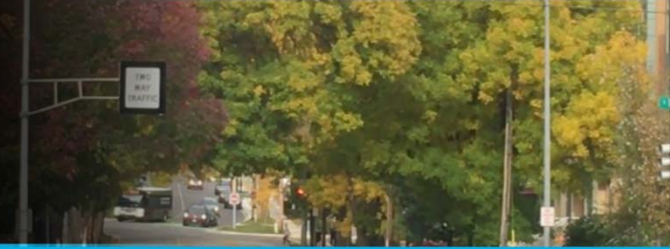
2018 Transportation Study

5 Year Crash History (2013-2017)



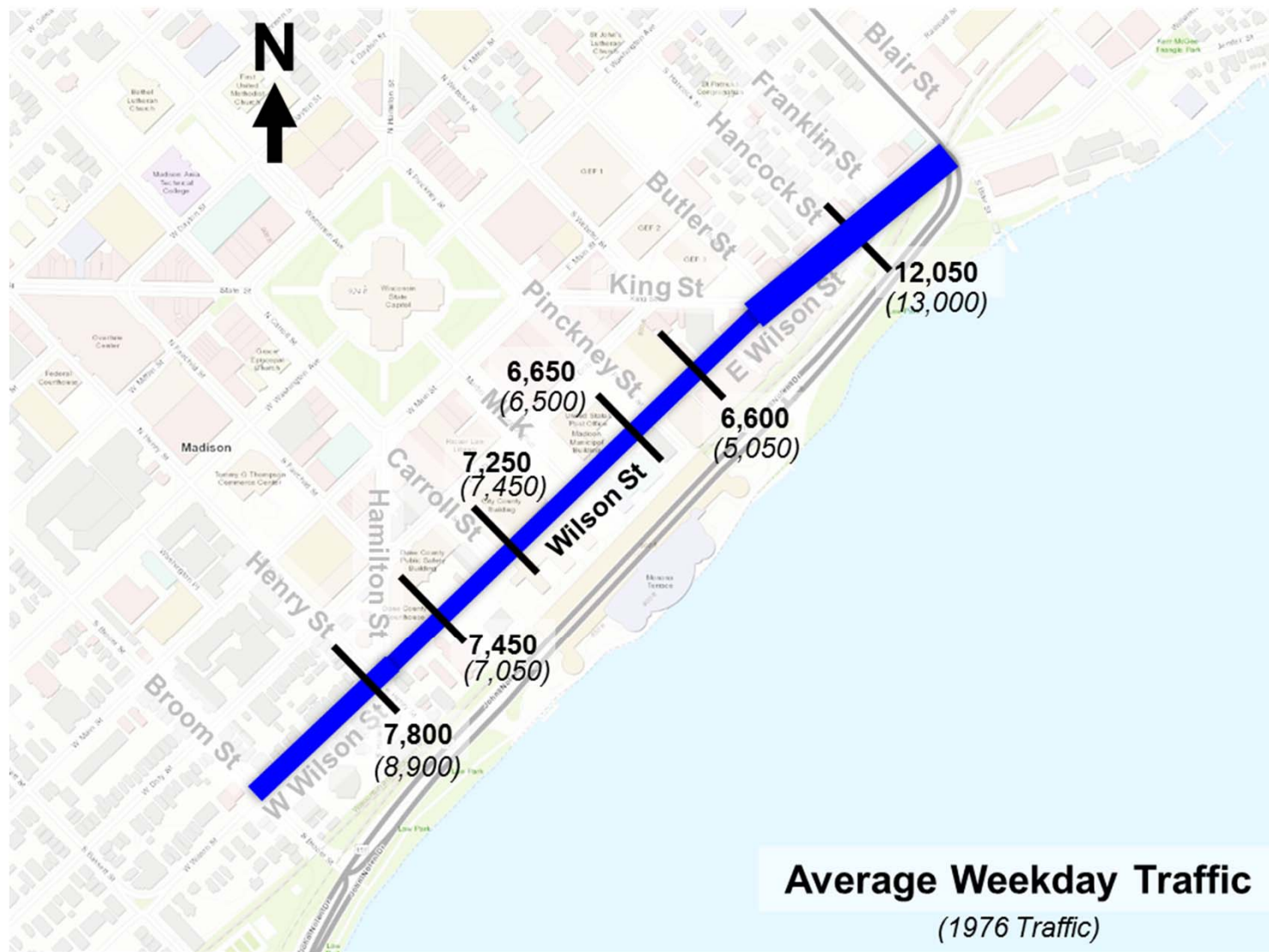


Wilson Street

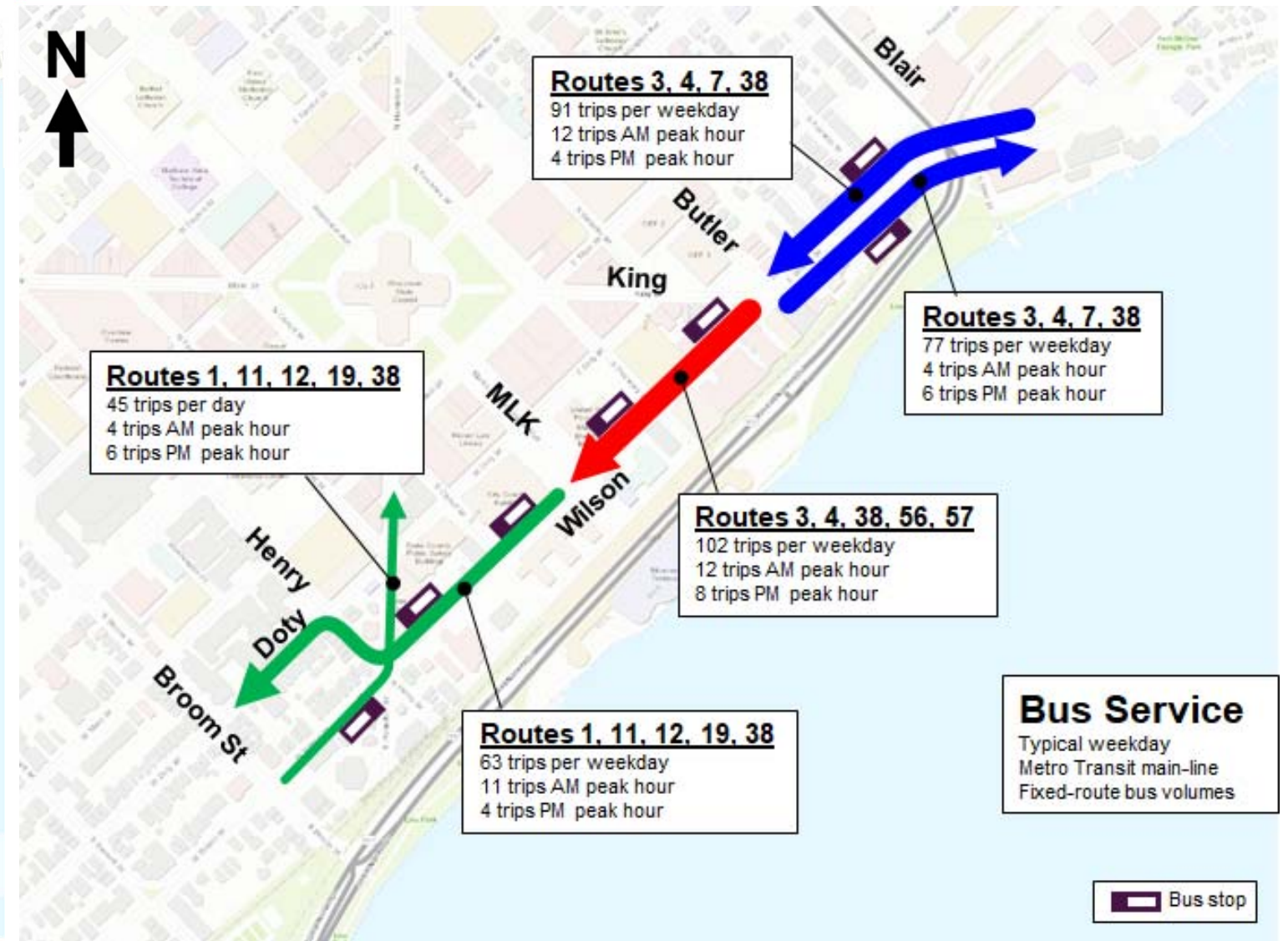


2018 Transportation Study

Average Weekday Volumes



Metro Operations



Next Steps

Perform Studies
Gather Data
PIM #1

Gather all public
input and work
on alternatives to
present at next
PIM

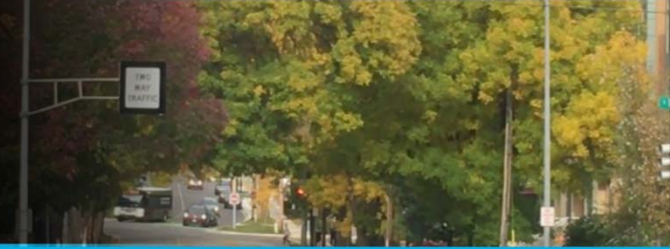
PIM #2
Alternatives

Design work for
W Wilson St
project (Broom –
Henry)

2019
Construction of
W Wilson St
(Broom – Henry)



Wilson Street



2018 Transportation Study

Existing Typical Sections – Looking East on Wilson St

