

Presentation to
Board of Park Commissioners

Arbor Hills Supplemental Fire Flow Supply
Booster Pumping Station No. 118

Warner Park Community Recreation Center

6:30 p.m.

December 8, 2010



Introduction

▶ Madison Water Utility

- Project Manager – Al Larson, P.E.
 - 608-266-4653 or allarson@cityofmadison.com

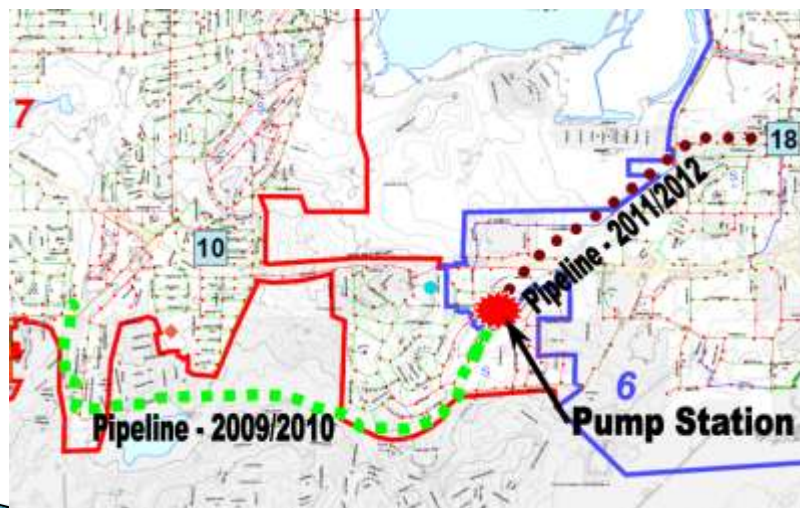
▶ Consultant

- Project Manager– Andy Mullendore, P.E.
 - 608-251-4843 or Andy.Mullendore@strand.com

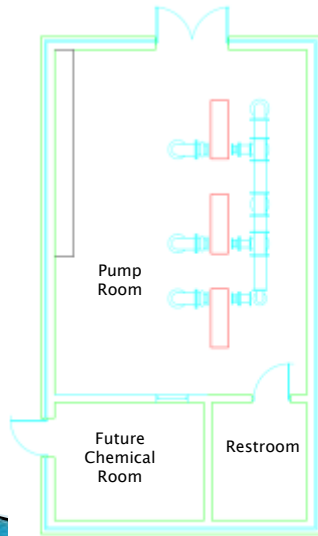
Project Need – Review of Project

- ▶ Project Established June 2009
- ▶ Objectives:
 - Improve Available Fire Flow
 - Improve System Reliability
 - Provide the ability to transfer water between zones
- ▶ Following alternative evaluation, a booster pumping station in conjunction with the Cannonball Trail Water Main was selected

Project Schematic



Booster Station Description



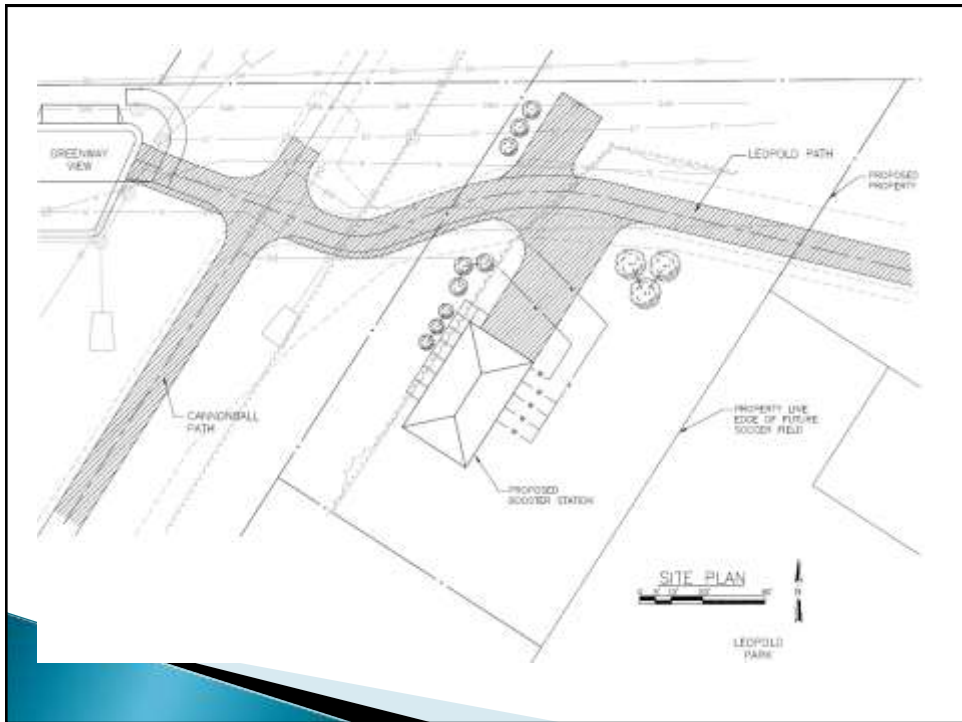
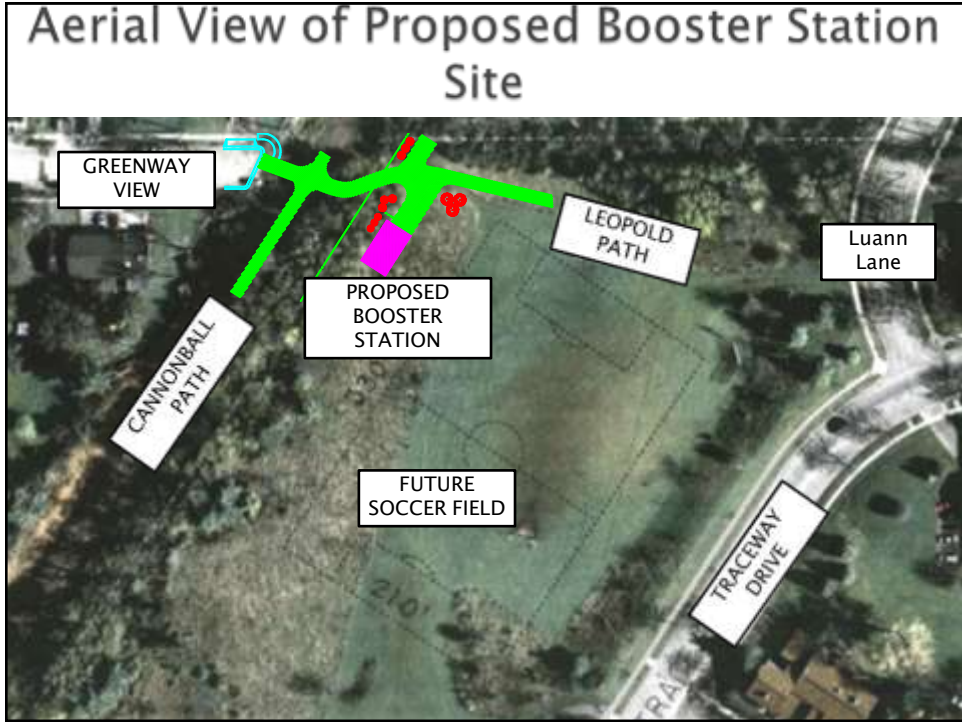
- ▶ Footprint ~ 42 feet by 24 feet
- ▶ Three 1,000 gpm booster pumps
- ▶ Room for future chemical addition
- ▶ Restroom for utility staff use
- ▶ 10 Foot Ceilings
- ▶ Shingled Pitched Roof considering gabled or hip roof
- ▶ Brick/Block Exterior
- ▶ Minimal lighting at entrances

Site Location Map

- Site A - Overpass
- Site B - 2609 Greenway View
- Site C - 2234 Luann Lane
- Site D - Also Leopold Park
- Site E - Churchill Drive*
- Site F - Leopold School

* Churchill Drive lot was randomly selected from properties that back up to the bike path right-of-way.







Impact on Park

- ▶ During construction access to the site will be from Luann Lane.
- ▶ The site will be fenced during construction. The entire site will be used for construction staging.
- ▶ Permanent site access will be from Greenway View across the bike path. Typically this will consist of one visit per day for 15 minutes by operator driving a small truck.
- ▶ Proposed property line would fall on edge of proposed full sized soccer field. Water Utility has no objection to use of property between structure and property line as clear space around soccer field.

Thank You!

