



Department of Public Works  
**City Engineering Division**

Robert F. Phillips, P.E.  
**City Engineer**

City-County Building, Room 115  
210 Martin Luther King, Jr. Boulevard  
Madison, Wisconsin 53703  
FAX 608 264 9275  
Textnet 866 704 2315  
www.cityofmadison.com

**608 266 4751**

**Assistant City Engineer**  
Michael R. Dailey, P.E.

**Principal Engineers**  
Christina M. Bachmann, P.E.  
John S. Fahrney, P.E.  
Gregory T. Fries, P.E.  
Christopher J. Petykowski, P.E.

**Facilities & Sustainability**  
Jeanne E. Hoffman, Manager  
James C. Whitney, A.I.A.

**Operations Supervisor**  
Kathleen M. Cryan

**GIS Manager**  
David A. Davis, R.L.S.

**Financial Officer**  
Steven B. Danner-Rivers

**Hydrogeologist**  
Brynn Bemis

June 5, 2012

**ADDENDUM NO. 1**

**LOCAL ROAD TRAFFIC CALMING & ARTERIAL PEDESTRIAN ENHANCEMENTS**  
**- 2012**

**CONTRACT NO. 6789**

Revise and amend the contract document(s) and plans for the above project as stated in this addendum, otherwise the original documents shall remain in effect.

Revise and amend the contract document(s) and plans for the above project as stated in this addendum, otherwise the original documents shall remain in effect.

**PLANS:**

**REMOVE SHEETS: TITLE, R-1, and P-1**

**INSERT SHEETS: TITLE & R-1 (REVISED 6/5/12)**

**ADD SHEETS: R-TC1, R-TC2 & R-M1**

Summary of plan revisions as follows:

Title Sheet: Sheet index update to include the addition of sheets R-TC1 & R-M1

R-1: Geometrics and type of island revised on Highland Ave. Mountable island added to intersection of Regent St. & Speedway.

R-TC1: Regent St. & Highland Ave. traffic calming plan added

R-M1: Regent St. & Highland Ave. pavement marking plan added

P-1: the Park & Langdon portion of this contract has been removed

**SPECIAL PROVISIONS:**

**REMOVE FROM SECTION 105.12 COOPERATION BY THE CONTRACTOR**

The Contractor shall coordinate with Boldt Construction for the resurfacing of the Park St. and Langdon St. intersection. Boldt is currently working on a project at the Memorial Union for the University of Wisconsin, which is located on the northeast corner of the Park St. and Langdon St.

intersection. Their work includes some utility work, and they may have some traffic control set up at this intersection already. The Contractor shall coordinate with Boldt for access during the resurfacing of the intersection as well as to install the traffic control devices as required by the plans, specifications, and these special provisions. Contact Melanie Taylor, Project Manager with The Boldt Company at 608-576-8583 or at [Melanie.taylor@boldt.com](mailto:Melanie.taylor@boldt.com).

#### **ADD TO SECTION 105.12 COOPERATION BY THE CONTRACTOR**

Madison Metropolitan School District (MMSD) will also have a construction project at West High School, which is in the vicinity of the Regent St. & Highland Ave. intersection. Their work will be taking place on the existing tennis courts which are located along Regent St. between the school and the property at 2436 Regent St. Their work will involve removing the existing tennis courts, grading, and installing basketball courts. Construction vehicles for the MMSD project will likely be taking access off of Highland Ave., near the southern limits of this project. The Contractor shall coordinate work and access with MMSD.

#### **REMOVE FROM SECTION 107.7 MAINTENANCE OF TRAFFIC**

##### **Park St. & Langdon St. Intersection**

During construction, the intersection of Park St. and Langdon St. may be closed to through traffic provided that proper signage and traffic control devices are used. The work at this intersection shall take place starting Friday, August 3 and be completed by Saturday, August 4 as also noted in Section 109.2 Prosecution of Work. The intersection of Park & Langdon shall be re-opened by 7:00pm on Saturday, August 4. If weather prevents work from taking place on August 3 and 4, the work shall take place on August 10 and 11.

The Contractor shall set up message boards at the intersections of Langdon St. & Lake St. and at Park St. & University Ave. 7 days prior to the closure of the intersection to provide advanced warning of the closure. If the work will need to be delayed to August 10 and 11, the message boards shall remain in place with the revised dates indicated on the changeable message.

During the closure, the Contractor shall provide all signage and traffic control devices as required by MUTCD. The Contractor shall also set up barricades & signs for a "soft" closure at Park St. & University Ave., Langdon St. & Lake St. and at Observatory Dr. & Charter St. which indicate that the intersection of Park St. and Langdon St. is closed ahead.

#### **ADD TO SECTION 107.7 MAINTENANCE OF TRAFFIC**

In addition to following these special provisions, the Contractor shall set up traffic control at the intersection of Regent St. & Highland Ave. according to plans.

#### **REMOVE FROM SECTION 109.2 PROSECUTION OF WORK**

Work at the Park St. & Langdon St. intersection shall begin on Friday, August 3, 2012 and shall be completed by 7:00pm on Saturday, August 4, 2012. If weather prevents work from taking place on these dates, the Contractor shall begin the work on August 10, and have all work completed by 7:00pm on August 11.

June 6, 2012

Page 3

**PROPOSAL:**

**DELETE PAGES E-5 TO E-7**

**INSERT PAGES E-5 TO E-8 (REV 6-5-12):** Quantities revised for plan to change to the intersection of Regent St. & Highland Ave. Bid item add for Furnish & Install 8 Inch Pipe & Fittings for water main installation, and items added for pavement markings. All items for the Park St. & Langdon St. intersection resurfacing have been removed.

The electronic files on the website have also been updated; please replace any plans or contract documents that were saved or printed off of the web.

Please acknowledge this addendum on Page E-1.

RFP:jmw

A handwritten signature in black ink, appearing to read 'R. Phillips', written over a horizontal line.

Robert F. Phillips, P.E.  
City Engineer

**PROPOSAL**

**NAME OF BIDDER**

**LOCAL ROAD TRAFFIC CALMING AND ARTERIAL PEDESTRIAN ENHANCEMENTS - 2012**

**REV 6-5-12**

**CONTRACT NO. 6789**

ITEM	TYPE OF WORK	ESTIMATED QUANTITIES	UNIT PRICE BID	TOTAL BID
<b>STREET ACCOUNT NO. CS53-54472-810360-00-53W1305</b>				
10701	TRAFFIC CONTROL	1.00	LUMP SUM	
10721	TRAFFIC CONTROL SIGN - PORTABLE CHANGEABLE MESSAGE	14.00	DAYS	
10911	MOBILIZATION	1.00	LUMP SUM	
20101	EXCAVATION CUT	130.00	C.Y.	
20303	SAWCUT BITUMINOUS PAVEMENT, FULL DEPTH	705.00	L.F.	
20501	ADJUST SEWER ACCESS STRUCTURE	1.00	EACH	
21024	SILT SOCK (12 INCH) COMPLETE (UNDISTRIBUTED)	100.00	L.F.	
21031	INLET PROTECTION TYPE C - COMPLETE (UNDISTRIBUTED)	3.00	EACH	
21052	POLYMER STABILIZATION (UNDISTRIBUTED)	300.00	S.Y.	
21055	INLET PROTECTION TYPE D HYBRID - COMPLETE (UNDISTRIBUTED)	12.00	EACH	
30205	TYPE 'E' CONCRETE CURB & GUTTER	345.00	L.F.	
30311	CONCRETE MOUNTABLE MEDIAN ISLAND NOSE	215.00	S.F.	
40102	CRUSHED AGGREGATE BASE COURSE GRADATION NO. 2 (UNDISTRIBUTED)	75.00	TON	
40410	CONCRETE SPEED HUMP	390.00	S.Y.	
90001	7" TEXTURED & COLORED CONCRETE	415.00	S.F.	
90002	TOPSOIL REDISTRIBUTION	18.50	S.Y.	
90005	ENGINEERED TOPSOIL	10.00	C.Y.	
<b>STREET ACCOUNT NO. CS53-58250-810543-00-53W0390 (PLEASANT VIEW RD.)</b>				
20101	EXCAVATION CUT	35.00	C.Y.	
20221	TOPSOIL	72.00	S.Y.	
20303	SAWCUT BITUMINOUS PAVEMENT, FULL DEPTH	225.00	L.F.	
20322	REMOVE CONCRETE CURB & GUTTER	46.00	L.F.	
20323	REMOVE CONCRETE SIDEWALK & DRIVE	70.00	S.F.	

**LOCAL ROAD TRAFFIC CALMING AND ARTERIAL PEDESTRIAN ENHANCEMENTS - 2012**

REV 6-5-12

CONTRACT NO. 6789

ITEM	TYPE OF WORK	ESTIMATED QUANTITIES		UNIT PRICE BID	TOTAL BID
20701	TERRACE SEEDING	72.00	S.Y.		
21024	SILT SOCK (12 INCH) COMPLETE (UNDISTRIBUTED)	30.00	L.F.		
21052	POLYMER STABILIZATION (UNDISTRIBUTED)	100.00	S.Y.		
21055	INLET PROTECTION TYPE D HYBRID COMPLETE (UNDISTRIBUTED)	6.00	EACH		
30201	TYPE 'A' CONCRETE CURB & GUTTER	216.00	L.F.		
30302	7 INCH CONCRETE SIDEWALK AND DRIVE	135.00	S.F.		
30311	CONCRETE MOUNTABLE MEDIAN ISLAND NOSE	18.00	S.F.		
40102	CRUSHED AGGREGATE BASE COURSE GRADATION NO. 2 (UNDISTRIBUTED)	15.00	TON		

**STREET ACCOUNT NO. CE57-54472-810700-00-53W1305 (REGENT & HIGHLAND)**

10802	ROOT CUTTING - SIDEWALK	10.00	L.F.		
20101	EXCAVATION CUT	240.00	CY		
20221	TOPSOIL	70.00	SY		
20303	SAWCUT BITUMINOUS PAVEMENT, FULL DEPTH	270.00	LF		
20322	REMOVE CONCRETE CURB & GUTTER	150.00	LF		
20323	REMOVE CONCRETE SIDEWALK & DRIVE	1,450.00	SF		
20501	ADJUST SEWER ACCESS STRUCTURE	1.00	EACH		
20701	TERRACE SEEDING	70.00	SF		
21024	SILT SOCK (12 INCH) COMPLETE (UNDISTRIBUTED)	50.00	LF		
21052	POLYMER STABILIZATION	250.00	SY		
21055	INLET PROTECTION TYPE D HYBRID COMPLETE (UNDISTRIBUTED)	3.00	EACH		
30201	TYPE 'A' CONCRETE CURB & GUTTER	160.00	LF		
30205	TYPE 'E' CONCRETE CURB & GUTTER	125.00	L.F.		
30301	5 INCH CONCRETE SIDEWALK AND DRIVE	505.00	SF		
30302	7 INCH CONCRETE SIDEWALK AND DRIVE	140.00	SF		
30311	CONCRETE MOUNTABLE MEDIAN ISLAND NOSE	85.00	S.F.		
30340	CURB RAMP DETECTABLE WARNING FIELDS	24.00	SF		

**LOCAL ROAD TRAFFIC CALMING AND ARTERIAL PEDESTRIAN ENHANCEMENTS - 2012**

REV 6-5-12

CONTRACT NO. 6789

ITEM	TYPE OF WORK	ESTIMATED QUANTITIES		UNIT PRICE BID	TOTAL BID
40102	CRUSHED AGGREGATE BASE COURSE GRADATION NO. 2	225.00	TON		
40203	HMA PAVEMENT TYPE E-3	190.00	TON		
40301	FULL WIDTH GRINDING	355.00	SY		
60801	PAVEMENT MARKING EPOXY, DOUBLE LINE, 4-INCH	30.00	L.F.		
60802	PAVEMENT MARKING EPOXY, LINE, 6-INCH	100.00	L.F.		
60803	PAVEMENT MARKING EPOXY, LINE, 8-INCH	240.00	L.F.		
60806	PAVEMENT MARKING EPOXY, RADIUS LINE, 6-INCH (5' LINE, 5' GAP)	150.00	L.F.		
60816	PAVEMENT MARKING EPOXY, CONTINENTAL CROSSWALK, 18-INCH	420.00	L.F.		
60818	PAVEMENT MARKING EPOXY, STOP LINE, 24-INCH	60.00	L.F.		
60820	PAVEMENT MARKING EPOXY, MEDIAN NOSE	150.00	L.F.		
60829	PAVEMENT MARKING EPOXY, SYMBOL, LEFT ARROW	1.00	EACH		
60834	PAVEMENT MARKING EPOXY, WORD, ONLY	1.00	EACH		
60881	PAVEMENT MARKING REMOVAL, 6-INCH	100.00	L.F.		
60884	PAVEMENT MARKING REMOVAL, 18-INCH	120.00	L.F.		
60885	PAVEMENT MARKING REMOVAL, 24-INCH	60.00	L.F.		
90001	7" TEXTURED & COLORED CONCRETE	330.00	S.F.		
90003	MOUNTABLE CONCRETE ISLAND	290.00	SF		
90004	REMOVE, PROVIDE & INSTALL CASTING	1.00	EACH		
<b>WATER ACCOUNT NO. EW01-58273-810455-00-53W1305 (REGENT &amp; HIGHLAND)</b>					
10703	TRAFFIC CONTROL FOR WATER MAIN INSTALLATION	1.00	LUMP SUM		
10913	MOBILIZATION FOR WATER MAIN INSTALLATION	1.00	LUMP SUM		
40381	REMOVE & REPLACE CONCRETE CURB & GUTTER	12.00	L.F.		
50226	UTILITY TRENCH PATCH TYPE III	46.00	S.Y.		
70002	FURNISH AND INSTALL 6 INCH PIPE & FITTINGS	40.00	L.F.		
70003	FURNISH AND INSTALL 8 INCH PIPE & FITTINGS	100.00	L.F.		
70405	CUT-IN CONNECTION	1.00	EACH		

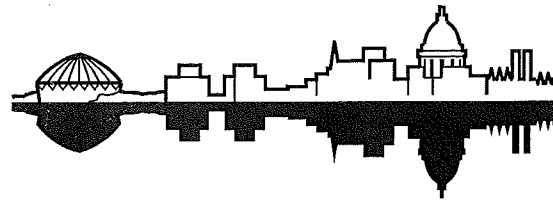
**LOCAL ROAD TRAFFIC CALMING AND ARTERIAL PEDESTRIAN ENHANCEMENTS - 2012**

REV 6-5-12

CONTRACT NO. 6789

ITEM	TYPE OF WORK	ESTIMATED QUANTITIES		UNIT PRICE BID	TOTAL BID
70407	FURNISH AND INSTALL HYDRANT	1.00	EACH		
70408	SELECT FILL - SAND FOR WATER	155.00	L.F.		
70413	FURNISH AND INSTALL STYROFOAM	8.00	L.F.		
70414	CUT OFF EXISTING WATER MAIN	1.00	EACH		
70415	ABANDON WATER VALVE BOX	2.00	EACH		
70424	TERRACE RESTORATION FOR WATER MAIN	12.00	L.F.		
70428	FURNISH AND INSTALL 6 INCH VALVE	2.00	EACH		
70429	FURNISH AND INSTALL 8 INCH VALVE	1.00	EACH		
70440	EXTEND AND RECONNECT SERVICE LATERAL - 1 INCH	18.00	L.F.		
70456	FURNISH EXCAVATION AND DITCH FOR LIVE TAP	1.00	EACH		

TOTAL



Madison, Wisconsin

# CITY OF MADISON

## CITY ENGINEERING DIVISION

### DEPARTMENT OF PUBLIC WORKS

# PLAN OF PROPOSED IMPROVEMENT

PUBLIC IMPROVEMENT PROJECT APPROVED

JUNE 7, 2011

BY THE COMMON COUNCIL  
OF MADISON, WISCONSIN

PUBLIC IMPROVEMENT DESIGN  
APPROVED BY:

*[Signature]* 5/30/12  
City Engineer Date

GEOMETRICS  
DESIGNED BY:

**WISCONSIN**  
DAVID C. DRYER  
E-28220  
MADISON WI  
PROFESSIONAL ENGINEER  
*[Signature]* 5/29/12

STREETS  
DESIGNED BY:

**WISCONSIN**  
CHRISTY BACHMANN  
#32079  
Madison  
PROFESSIONAL ENGINEER  
*[Signature]* 5-29-12

INDEX OF SHEETS

SHEET NO.	TITLE
1	PROJECT LOCATION MAP
LM1	CAMDEN RD. SPEED HUMPS
C1	FARLEY AVE. ISLANDS
FA1	FISHER ST. SPEED HUMPS
F11	LAKESIDE ST. ISLANDS
L1	OLIN AVE. ISLAND
O1	<del>PARK ST. &amp; LANGDON ST. RESURFACING</del>
P1	PLEASANT VIEW RD. MEDIAN
PV1	REGENT ST. & HIGHLAND AVE. INTERSECTION
R1	REGENT ST. & HIGHLAND AVE. WATER
R2	REGENT ST. & HIGHLAND AVE. TRAFFIC CONTROL
R-TC1-2	REGENT ST. & HIGHLAND AVE. PAVEMENT MARKING
R-M1	SHERMAN AVE. SPEED HUMP
S1	VONDRON RD. ISLAND RESTORATION
V1	

REV  
6-5-12  
JMW

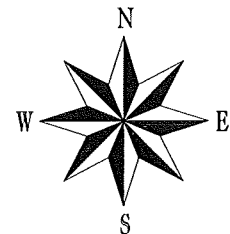
## LOCAL ROAD TRAFFIC CALMING AND ARTERIAL PEDESTRIAN ENHANCEMENTS - 2012

CITY PROJECT NO. 53W1305  
CONTRACT NO. 6789

CONVENTIONAL SIGNS

FIELD VERIFY ALL UTILITY LOCATIONS

GAS	— G —
STORM SEWER	— ST —
SANITARY SEWER	— SAN —
WATER	— W —
OVERHEAD ELECTRIC	— OH —
POWER POLE	□
ADA COMPLIANT RAMP W/ DETECTABLE WARNING FIELD	□
COMBUSTIBLE FLUIDS	<i>[CAUTION SIGN]</i>



## CITY-WIDE PROJECT LOCATIONS

NOTES:

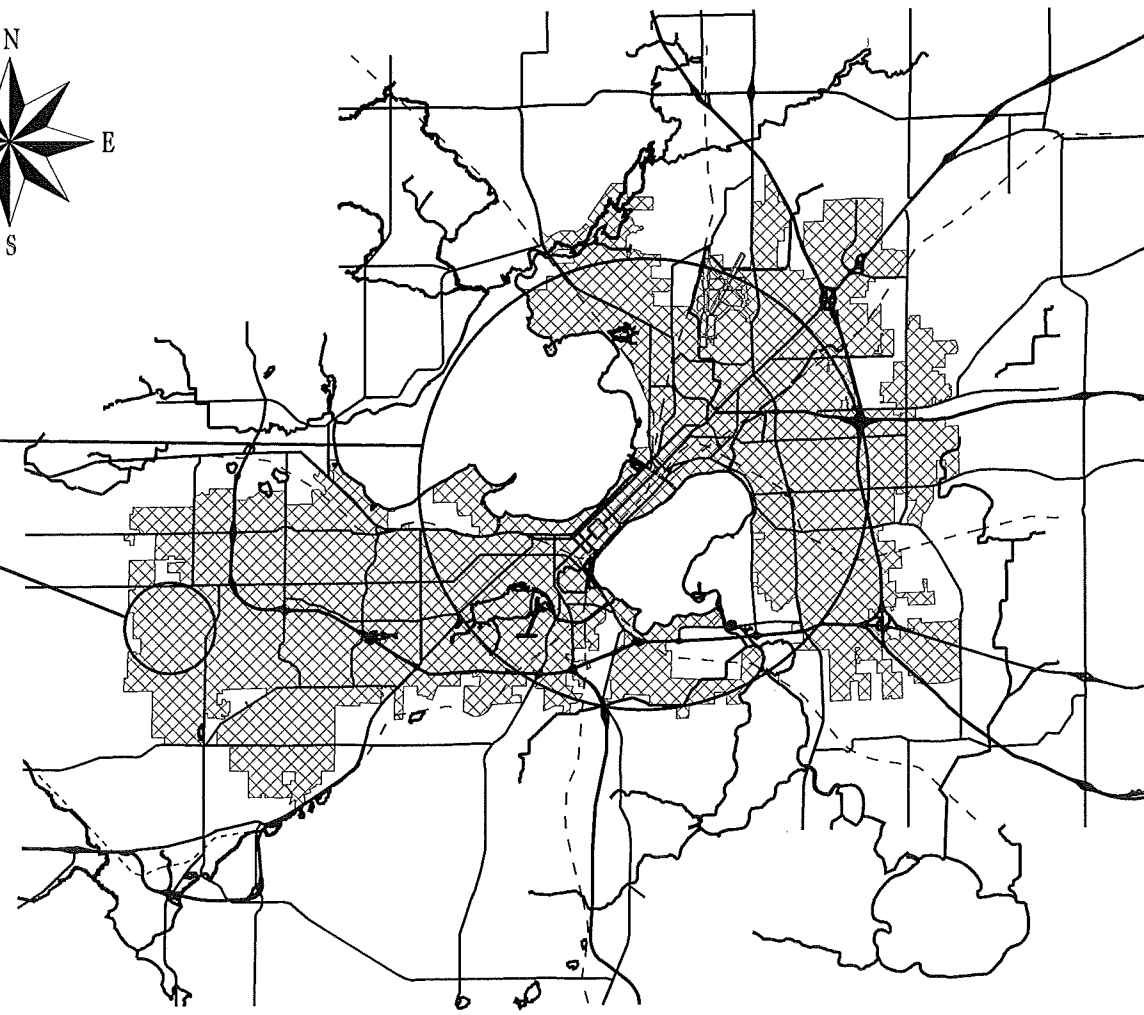
ALL GUTTERS SHALL DRAIN WITH A MINIMUM GRADE OF 0.50% TOWARD STORM SEWER INLETS.

SIDEWALK RAMPS AND CURB THRU SIDEWALK RAMPS SHALL HAVE A MAXIMUM SLOPE OF 1" PER 12". SIDEWALK AND CURB RAMPS SHALL BE CONSTRUCTED WITH A SIDE SLOPE OF 2.00%. SIDEWALK SHALL HAVE A MINIMUM LONGITUDINAL SLOPE OF 0.50% AND A MAXIMUM LONGITUDINAL SLOPE OF 5.00% EXCEPT WHERE STREET GRADES EXCEED 5.00%.

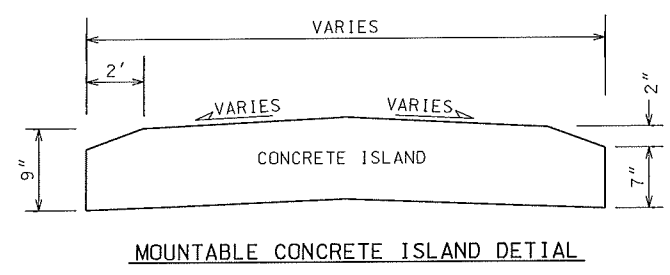
EROSION CONTROL MEASURES SHALL BE INSTALLED AS DIRECTED BY THE ENGINEER

EARTH WORK SUMMARY:

EXCAVATION CUT (MEASURED PLAN QUANTITY).....560 C.Y.  
ESTIMATED UNDISTRIBUTED UNDERCUT.....50 C.Y.  
TOTAL UNCLASSIFIED EXCAVATION CUT.....610 C.Y.







REMOVE CONCRETE ISLAND  
 INSTALL 5.25" BIT PVMT, TYPE E-3  
 USE GRAD 2 CRUSHED AGG. AS NECESSARY  
 TO GRADE BASE TO PROPER ELEVATION

INSTALL MOUNTABLE CONC ISLAND  
 SAWCUT AT EDGE

5.25" BITUMINOUS PAVEMENT, TYPE E-3  
 2" UPPER LAYER, 12.5 mm  
 3.25" LOWER LAYER, 19 mm  
 4" GRAD. 2 CRUSHED AGG  
 6" GRAD. 1 CRUSHED AGG

INSTALL RAMP

REM & REPL CURB, TYPE 'A' OR 'X'  
 PAY ALL AS TYPE 'A' CURB  
 TAKE CARE TO NOT DAMAGE PVMT

REM EX. RAMP

REMOVE INLET CASTING  
 PROVIDE & INSTALL R-1878-B7L  
 ADJUST AS NECESSARY

MOUNTABLE CONC ISLAND NOSE  
 7" TEXTURED & COLORED CONCRETE  
 FOR ISLAND INTERIOR

REM EXISTING CONC ISLAND  
 REM & REPLACE CURB  
 INSTALL TYPE 'A' C&G

TRANSITION TO FULL W. CURB HEAD  
 PAY AS MOUNTABLE CONC ISLAND

MOUNTABLE CONC ISLAND

ADJUST SAS AS NECESSARY

TYPE 'E' CURB

TYPE 'A' CURB

LANDSCAPING ADJACENT TO  
 BUILDING TO REMAIN

REM SIDEWALK  
 RESTORE W/ TOPSOIL & SEED

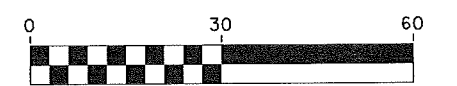
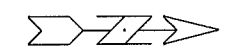
5" CONC TERRACE

0709-211-2302-5  
 MADISON METRO SCHOOL DISTRICT  
 WEST HIGH SCHOOL  
 30 ASH ST

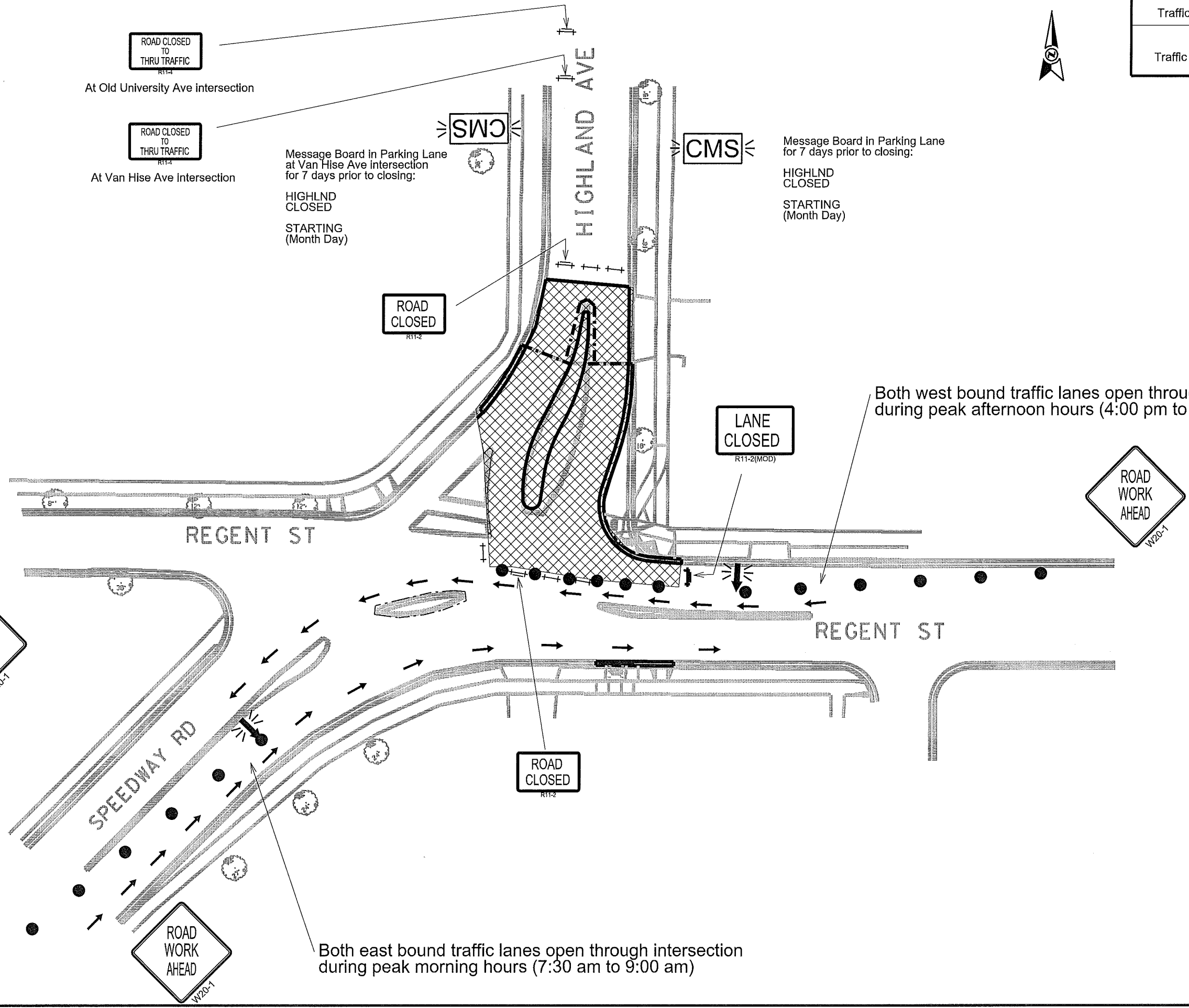
0709-211-2301-7  
 RED TAIL ENTERPRISES LLC  
 2436 REGENT ST

- NOTES:
1. CURB GRADES TO BE PROVIDED BY ENGINEER PRIOR TO CONSTRUCTION
  2. CONCRETE ISLAND REMOVAL TO BE PAID AS REMOVE CONCRETE SIDEWALK & DRIVE

= 2" MILL & OVERLAY



PLOT SCALE: \_\_\_\_\_  
 PLOT NAME: \_\_\_\_\_  
 REV. DATE: \_\_\_\_\_  
 ORIGINATOR: CITY OF MADISON, SIBEE'S DIVISION



LEGEND	
●	DRUM DELINEATOR
⊥	TYPE 3 BARRICADE
⊥	TYPE 3 BARRICADE W/SIGN
←	ELECTRONIC ARROWBOARD
⊠	WORK ZONE
≡CMS≡	ELECTRONIC ARROWBOARD

PLOT SCALE:

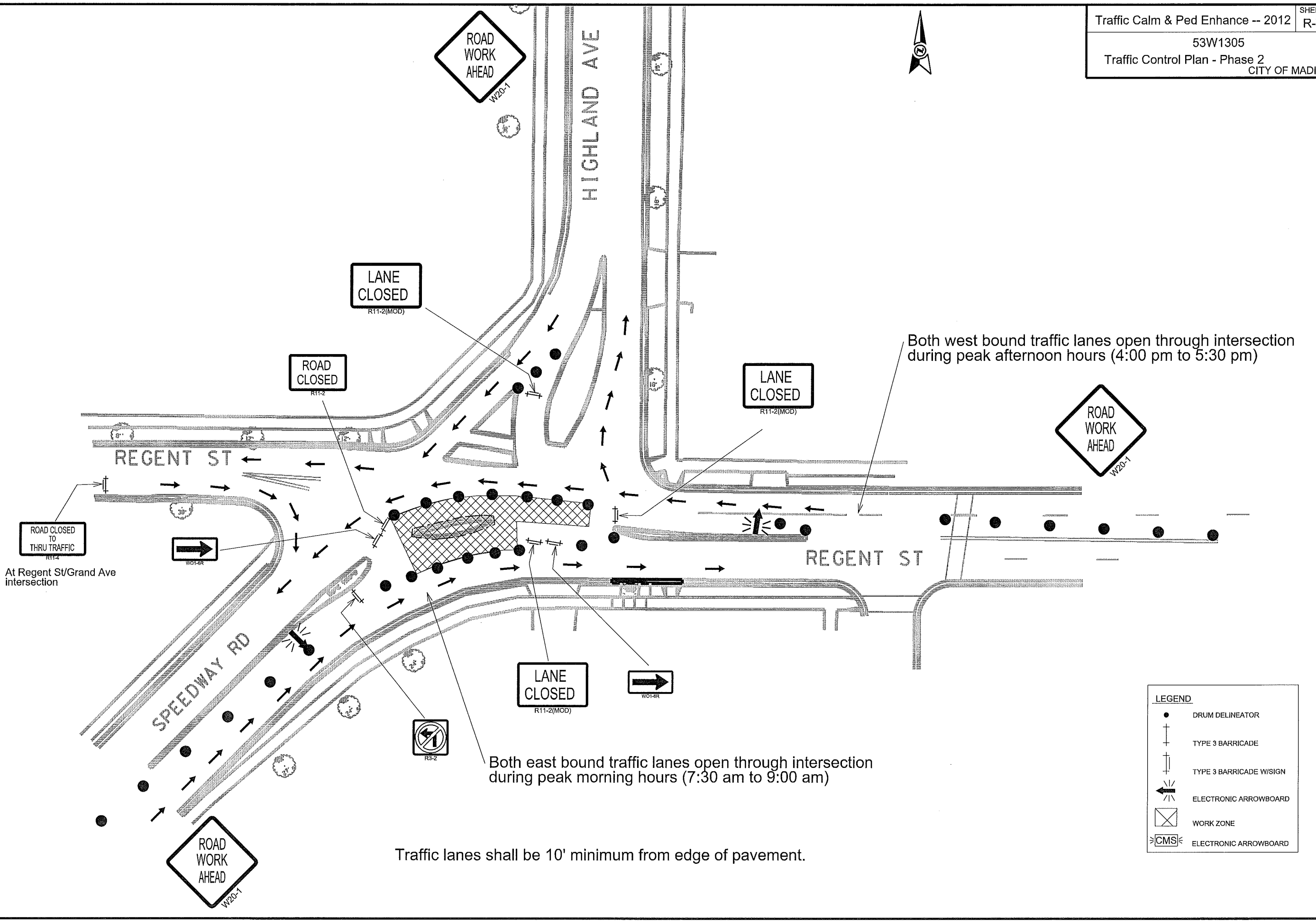
PLOT NAME:

REV. DATE:

ORIGINATOR: CITY OF MADISON, TRAFFIC ENG. DIV.



PLOT SCALE:  
 PLOT NAME:  
 REV. DATE:  
 ORIGINATOR: CITY OF MADISON, TRAFFIC ENG. DIV.



ROAD CLOSED TO THRU TRAFFIC  
 R11-2  
 At Regent St/Grand Ave intersection

LANE CLOSED  
 R11-2(MOD)

ROAD CLOSED  
 R11-2

LANE CLOSED  
 R11-2(MOD)

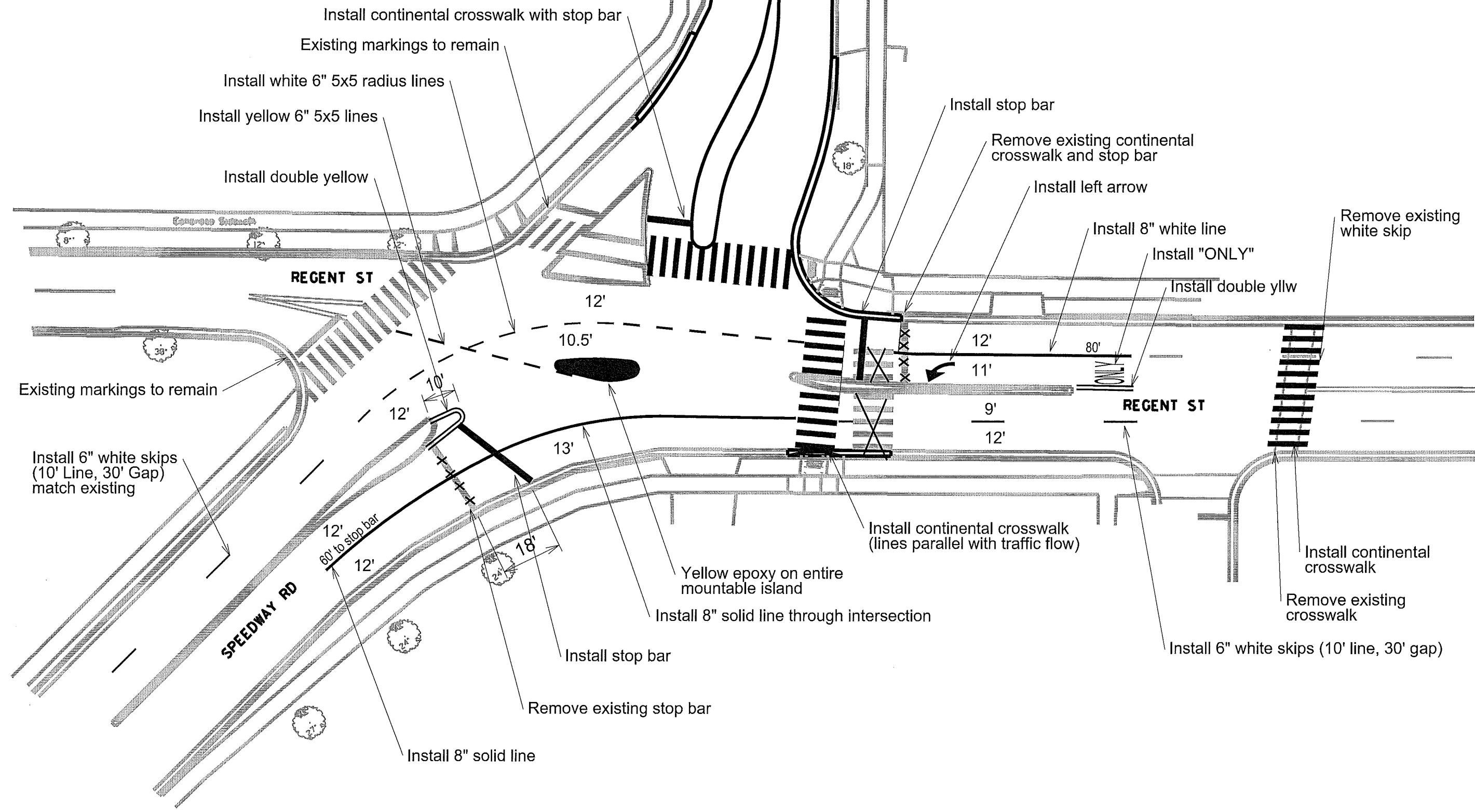
LANE CLOSED  
 R11-2(MOD)

Both east bound traffic lanes open through intersection during peak morning hours (7:30 am to 9:00 am)

Both west bound traffic lanes open through intersection during peak afternoon hours (4:00 pm to 5:30 pm)

Traffic lanes shall be 10' minimum from edge of pavement.

LEGEND	
●	DRUM DELINEATOR
⊥	TYPE 3 BARRICADE
⊥	TYPE 3 BARRICADE W/SIGN
←	ELECTRONIC ARROWBOARD
⊗	WORK ZONE
⊳CMS⊲	ELECTRONIC ARROWBOARD



Contact Traffic Engineering 267-8725 to assist with final layout of markings.

PLOT SCALE:  
PLOT NAME:  
REV. DATE:  
ORIGINATOR: CITY OF MADISON, TRAFFIC ENG. DIV.