



Madison, Wisconsin

CITY OF MADISON

CITY ENGINEERING DIVISION DEPARTMENT OF PUBLIC WORKS

PLAN OF PROPOSED IMPROVEMENT

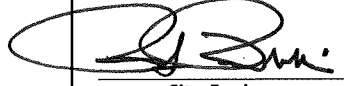
N. FRANKLIN – N. BLAIR STREET SANITARY CROSSOVER

CITY PROJECT NO. 53W1326

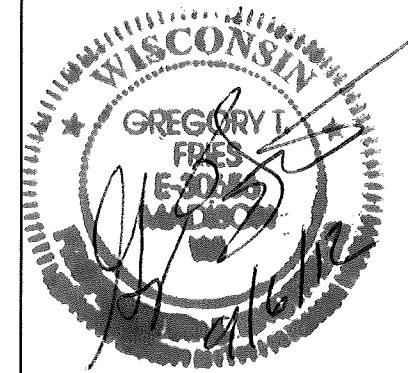
CONTRACT NO. 6961

PUBLIC IMPROVEMENT PROJECT APPROVED
APRIL 10, 2012
BY THE COMMON COUNCIL
OF MADISON, WISCONSIN

PUBLIC IMPROVEMENT DESIGN
APPROVED BY:

 9/26/12
City Engineer Date

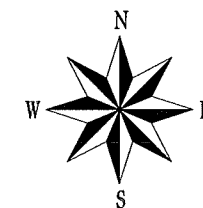
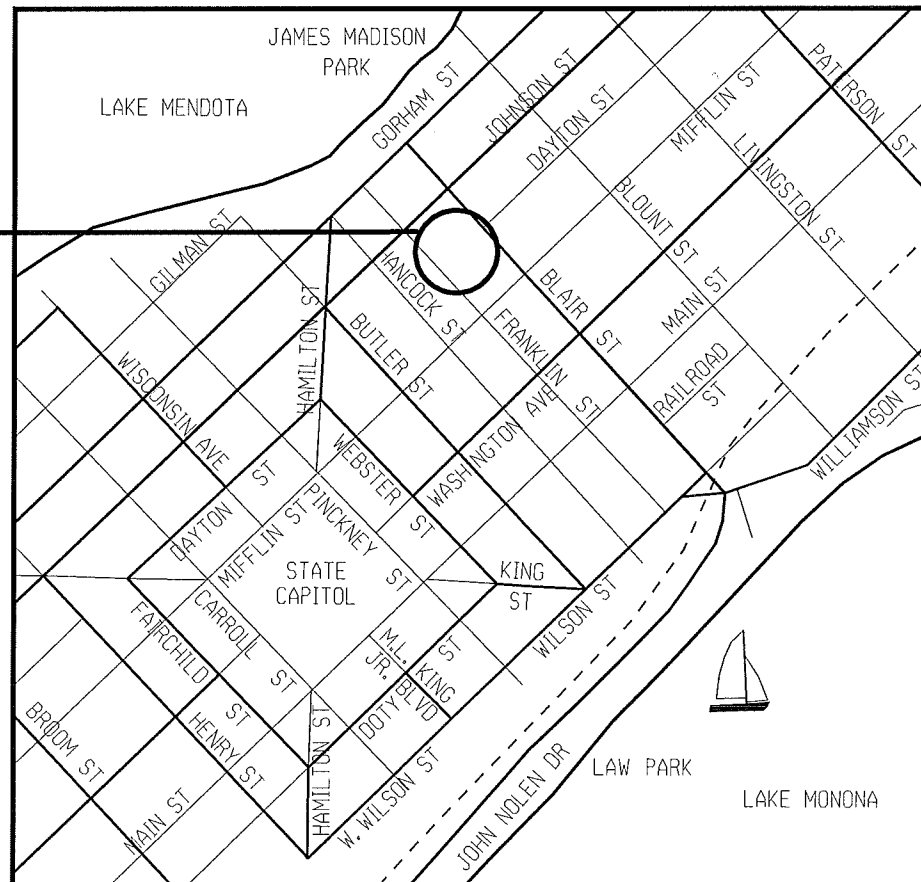
APPROVED BY:



INDEX OF SHEETS

SHEET NO.	TITLE
SHEET NO. 1	EASEMENTS
SHEET NO. 2	UTILITY PLAN AND PROFILE
SHEET NO. 3	STORM SCHEDULE
SHEET NO. 4	SIDEWALK REPLACEMENT DETAILS
SHEET NO. 5	

**PROJECT
LOCATION**



PLOT SCALE:

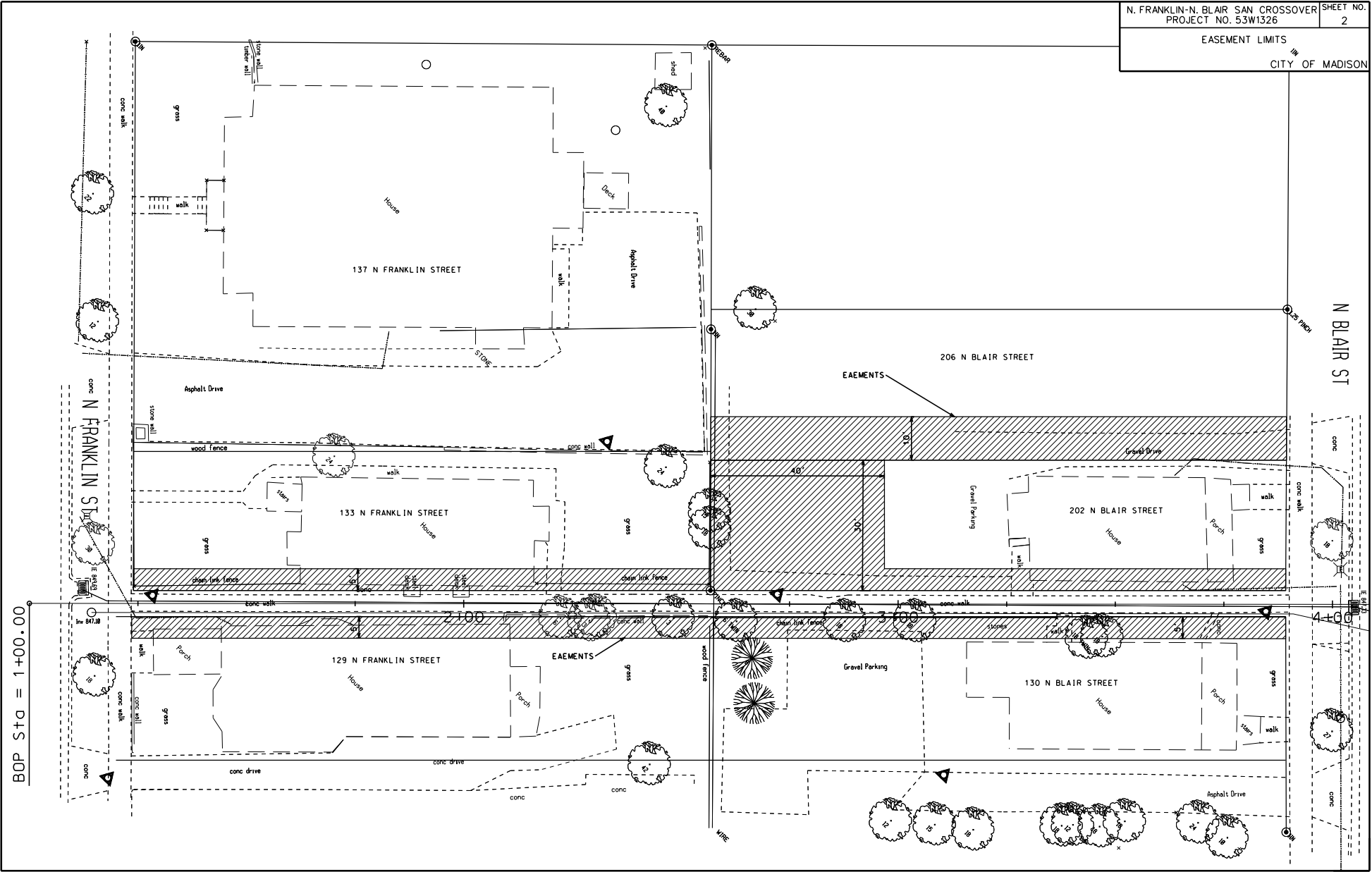
PLOT NAME:

REV. DATE:

ORIGINATOR:

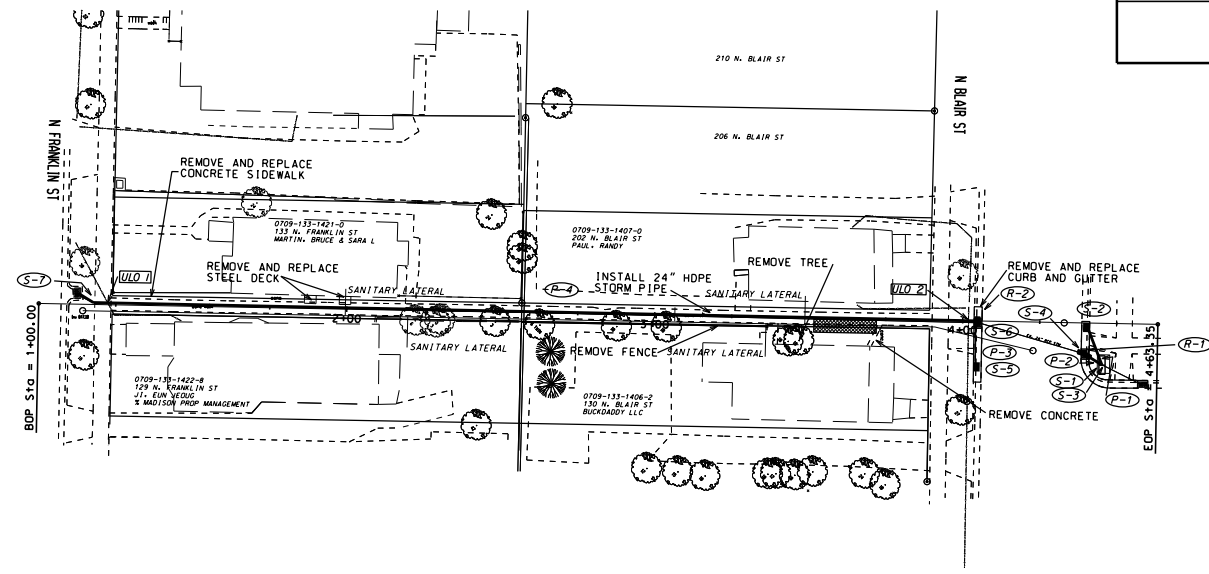
EASEMENT LIMITS

CITY OF MADISON

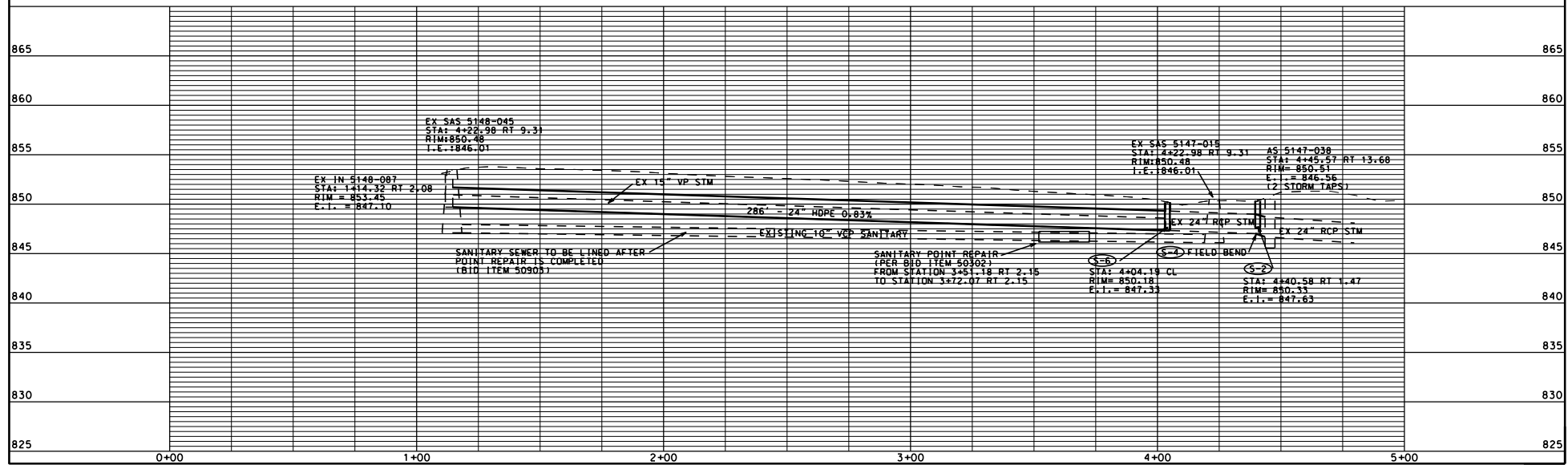


REV. DATE: PLOT NAME: PLOT SCALE:

BOP Sta = 1+00.00



PLOT SCALE: _____
 PLOT NAME: _____
 REV. DATE: _____



ORIGINATOR: CITY OF MADISON, STREETS DIVISION

STORM SEWER SCHEDULE

PROPOSED STRUCTURES

STRUC. NO.	STATION	LOCATION (OFFSET)	TYPE	TOP OF CASTING	E.I.	DEPTH	NOTES
S-1	4+45.57	RT-13.68	STORM TAP	--	847.56	--	
S-2	4+40.58	RT-1.47	H INLET	850.33	847.63	2.70	W/R-3067-7004-V
S-3	4+45.57	RT-13.68	STORM TAP	--	846.56	--	
S-4	4+40.15	RT-10.25	24" FIELD BEND	--	847.02	--	
S-5	4+04.30	RT-14.89	H INLET	850.19	847.90	2.29	FP, W/R-3067-7004
S-6	4+04.19	CL	H INLET	850.18	847.33	2.85	FP, W/R-3067-7004
S-7	1+17.83	LT-.59	24" FIELD BEND	--	849.69	--	IF POSSIBLE, BUTT-FUSE

PROPOSED PIPES

PIPE NO.	FROM (DNSTM)	TO (UPSTM)	LGTH (FT)	DISCH. E.I.	INLET E.I.	SLOPE (%)	PIPE SIZE	TYPE	NOTES
P-1	S-1	S-2	13.1	847.56	847.63	0.53%	12"	RCP	
P-2	S-3	S-4	6.9	846.56	847.02	6.67%	24"	RCP	
P-3	S-5	S-6	14.9	847.83	847.90	0.47%	12"	RCP	NCM
P-4	S-6	S-7	285.7	847.33	849.69	0.83%	24"	HDPE	SDR 17

STRUCTURE REMOVALS

STRUC. NO.	STATION	LOCATION (OFFSET)	TYPE	TOP OF CASTING	E.I.	DEPTH	NOTES
R-1	4+40.15	RT-10.25	INLET	850.37	847.02	3.35	
R-2	4+04.32	RT-.66	INLET	850.18	847.33	2.85	

PIPE REMOVALS

PIPE NO.	FROM (DNSTM)	TO (UPSTM)	LGTH (FT)	PIPE SIZE	TYPE	PAID (Y/N)
RP-1	S-2	S-4	6.9	12"	VP	N
RP-2	S-3	S-2	287.5	15"	VP	N

UTILITY LINE OPENINGS

ULO NO.	STATION	LOCATION (OFFSET)	TYPE
ULO 1	1+22.23	LT-.47	CABLE/TELE
ULO 2	4+01.69	LT-.60	CABLE/TELE

STANDARD NOTES:

- ABBREVIATIONS: AE = APRON ENDWALL; RCP = REINFORCED CONCRETE PIPE; HERCP = HORIZONTAL ELLIPTICAL REINFORCED CONCRETE PIPE; DNA = DOES NOT APPLY; SAS = SEWER ACCESS STRUCTURE; LP = LOW POINT INLET STRUCTURE; FP = FIELD POURED STRUCTURE; TR = TOP OF CONCRETE ROOF; NCM = NO CROWN MATCH FOR PIPES
- APPROXIMATE DISCHARGE E.I. GIVEN, ADJUST E.I. AND PIPE SLOPE IN THE FIELD.
- TOP OF CASTING GRADE GIVEN IS THE TOP OF CURB FOR INLET STRUCTURES AND THE FLOWLINE OF THE CLOSED CASTING FOR SAS's.
- TOP OF CONCRETE ROOF (TR) IS 1.25' BELOW TOP OF CASTING UNLESS OTHERWISE NOTED.
- ALL REINFORCED CONCRETE PIPES TO BE CLASS III UNLESS OTHERWISE NOTED.
- SURVEYOR TO CONFIRM THAT ALL INLET STATION / OFFSETS LINE UP WITH PROPOSED CURB AND GUTTER.
- ALL STRUCTURES CALLED OUT AS FIELD POURED SHALL BE FIELD POURED. ALL OTHER STRUCTURES (NOT INDICATED AS FIELD POURED) SHALL BE SUBMITTED TO CITY ENGINEERING FOR APPROVAL IF PRECAST STRUCTURES ARE PREFERRED. CONTACT SALLY SWENSON OF CITY ENGINEERING AT (608) 266-4862 FOR PRECAST APPROVALS, OR FAX SHOP DRAWINGS TO (608)264-9275.

