

Madison, Wisconsin

INDEX OF SHEETS

SHEET NO. 1	TITLE
SHEET NO. D1	DETAILS
SHEET NO. P1-P4	STREET PLAN & PROFILE
SHEET NO. TC1-TC12	TRAFFIC CONTROL PLAN
SHEET NO. M1-M6	PAVEMENT MARKING PLAN

CITY OF MADISON

CITY ENGINEERING DIVISION

DEPARTMENT OF PUBLIC WORKS

PLAN OF PROPOSED IMPROVEMENT

COTTAGE GROVE ROAD RESURFACING

CITY PROJECT NO. 53W1477

CITY CONTRACT NO. 6991

PUBLIC IMPROVEMENT PROJECT
APPROVED

JUNE 4, 2013

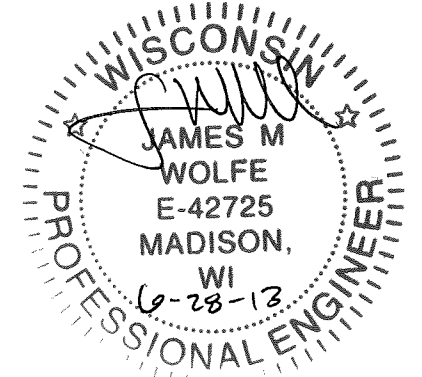
BY THE COMMON COUNCIL
OF MADISON, WISCONSIN

PUBLIC IMPROVEMENT DESIGN
APPROVED BY:

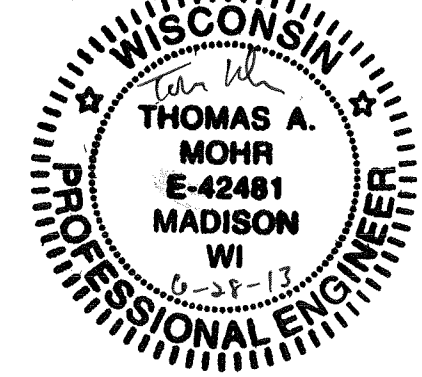
City Engineer

6/28/13
Date

STREET
DESIGNED BY:

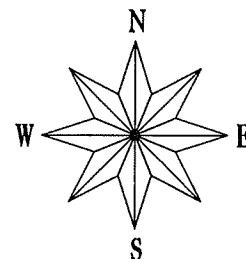


TRAFFIC CONTROL &
PAVEMENT MARKINGS
DESIGNED BY:

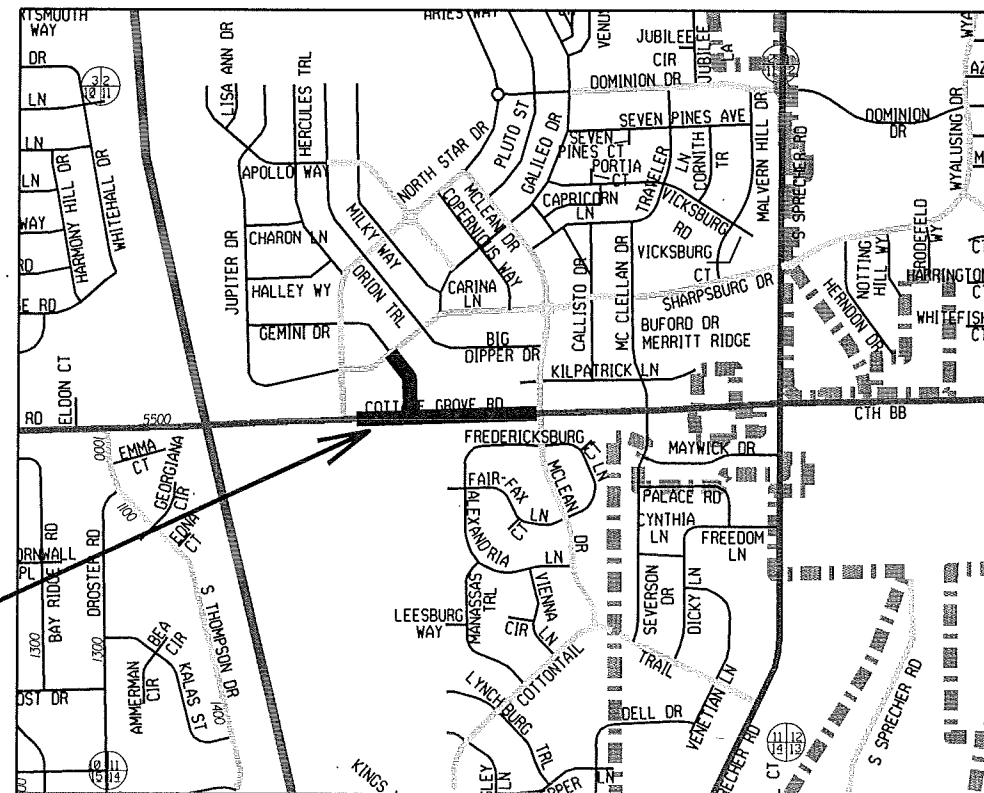


CONVENTIONAL SIGNS
FIELD VERIFY ALL UTILITY LOCATIONS

GAS	— G —
STORM SEWER	— ST —
SANITARY SEWER	— SAN —
WATER	— W —
OVERHEAD ELECTRIC	— OH —
POWER POLE	⊙
ADA COMPLIANT RAMP W/ DETECTABLE WARNING FIELD	
COMBUSTIBLE FLUIDS	



CONSTRUCTION
PROJECT LOCATION



PLOT SCALE: _____

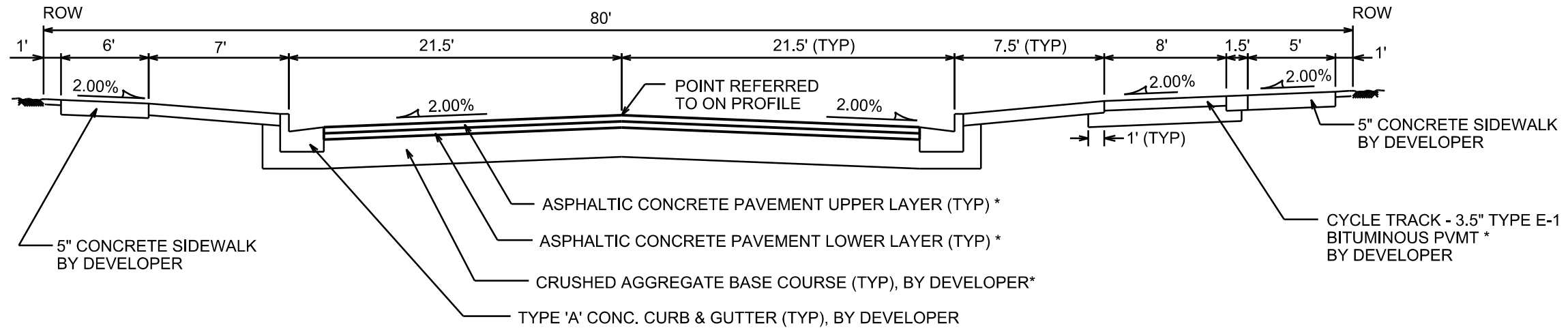
PLOT NAME: _____

REV. DATE: _____

ORIGINATOR: CITY OF MADISON, STREETS DIVISION

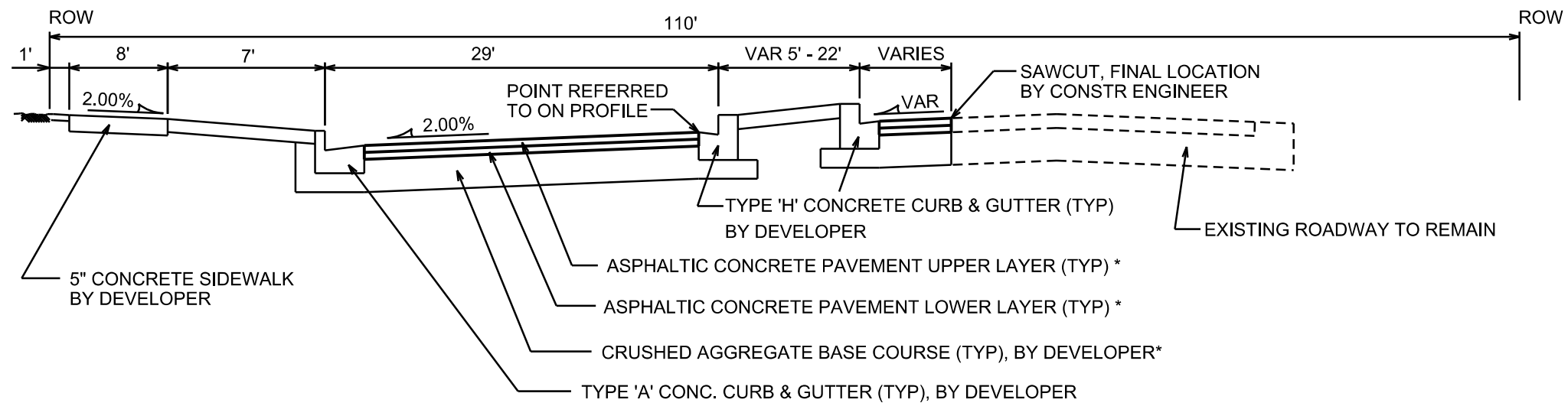
TYPICAL SECTION

GEMINI DRIVE
NOT TO SCALE



TYPICAL SECTION

COTTAGE GROVE ROAD
NOT TO SCALE



NOTES:

* A PAVEMENT DESIGN IN ACCORDANCE WITH STANDARD
DETAIL DRAWING 4.06 IS REQUIRED ON ALL PROJECTS

TYPE 'C' PAVEMENT SHALL BE USED ON GEMINI & COTTAGE GROVE

* CITY OF MADISON MINIMUM PAVEMENT DESIGN

TYPE	CRUSHED AGG. BASE COURSE		ASPHALTIC CONCRETE PAVEMENT			
	LOWER LAYER GRADATION 1	UPPER LAYER GRADATION 2	TYPE	THICKNESS	TYPE	THICKNESS
A	6"	4"	E-0.3	1.75"	E-0.3	1.75 "
B	6"	4"	E-1	2.50"	E-1	1.75 "
C	6"	4"	E-3	3.50"	E-3	1.75 "

PLAN AND PROFILE

COTTAGE GROVE RD

CITY OF MADISON

NOTES:

1. DEVELOPER IS RESPONSIBLE FOR CONSTRUCTION OF UTILITIES, PROPOSED CURB & GUTTER, SIDEWALK, BASE & DRIVE APRONS.
2. NEW UTILITIES TO BE CONSTRUCTED BY DEVELOPER WILL INCLUDE NEW MANHOLES AND STRUCTURES WITH CASTINGS IN THE STREET WHICH ARE NOT SHOWN ON THESE PLANS.

652

SEE SHEET P-1
COTTAGE GROVE RD
-CD INTERSECTION DESIGN

UNDER

MATCHLINE STA 55+00.00

NORTH STAR DRIVE

COTTAGE GROVE ROAD

PAVING LIMITS

ISLAND BY DEVELOPER -

POB
10+00.00

50+00

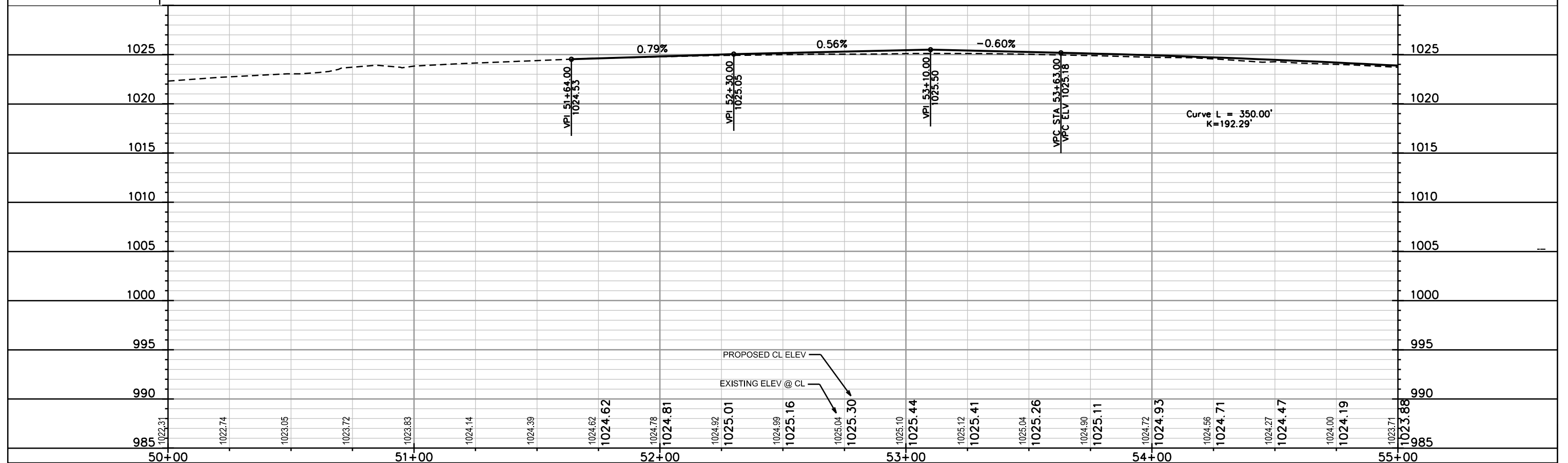
51+00

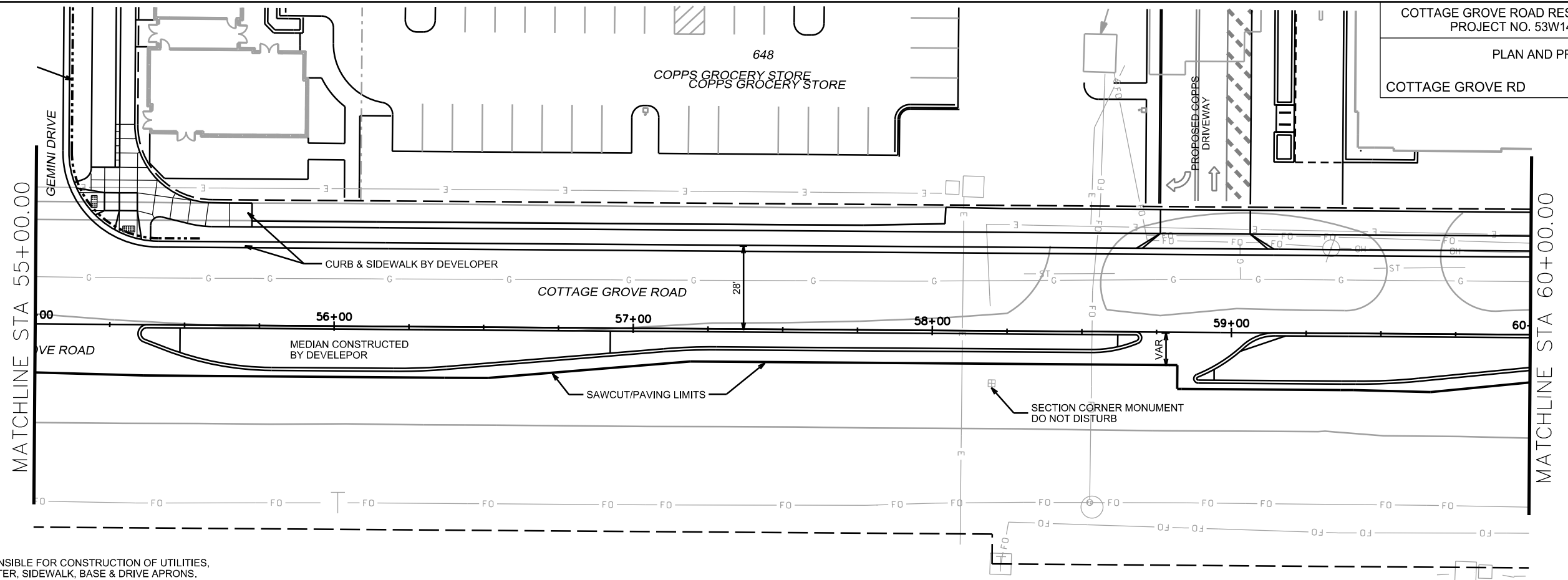
52+00

53+00

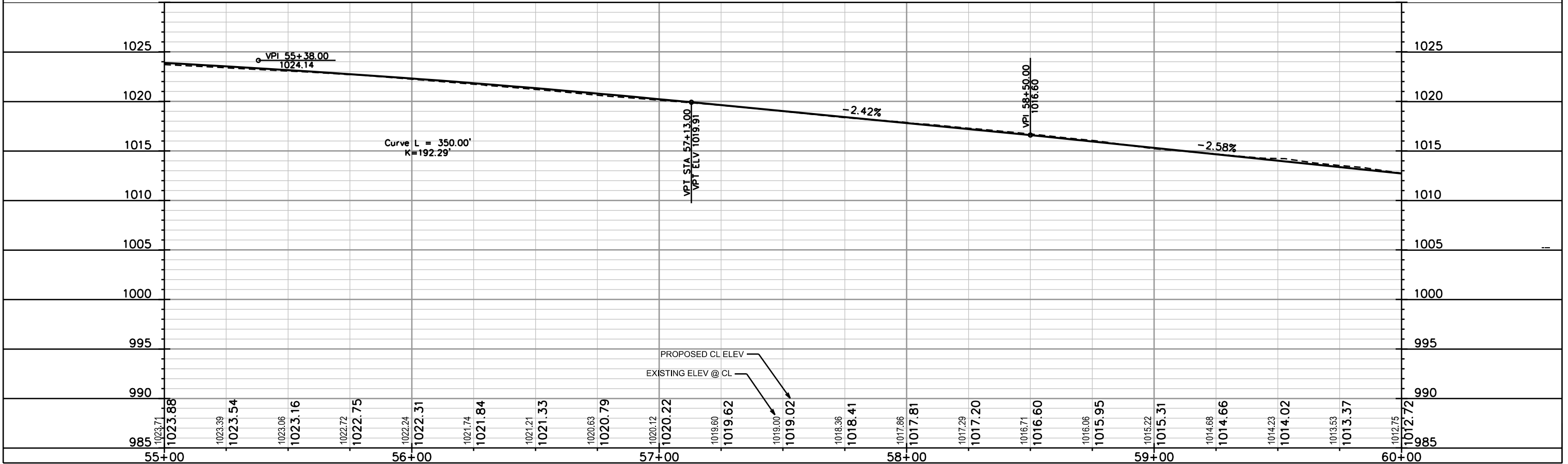
54+00

55-1-A

POB
+00.00TEL
—
MH



- NOTES:
1. DEVELOPER IS RESPONSIBLE FOR CONSTRUCTION OF UTILITIES, PROPOSED CURB & GUTTER, SIDEWALK, BASE & DRIVE APRONS.
 2. NEW UTILITIES TO BE CONSTRUCTED BY DEVELOPER WILL INCLUDE NEW MANHOLES AND STRUCTURES WITH CASTINGS IN THE STREET WHICH ARE NOT SHOWN ON THESE PLANS.

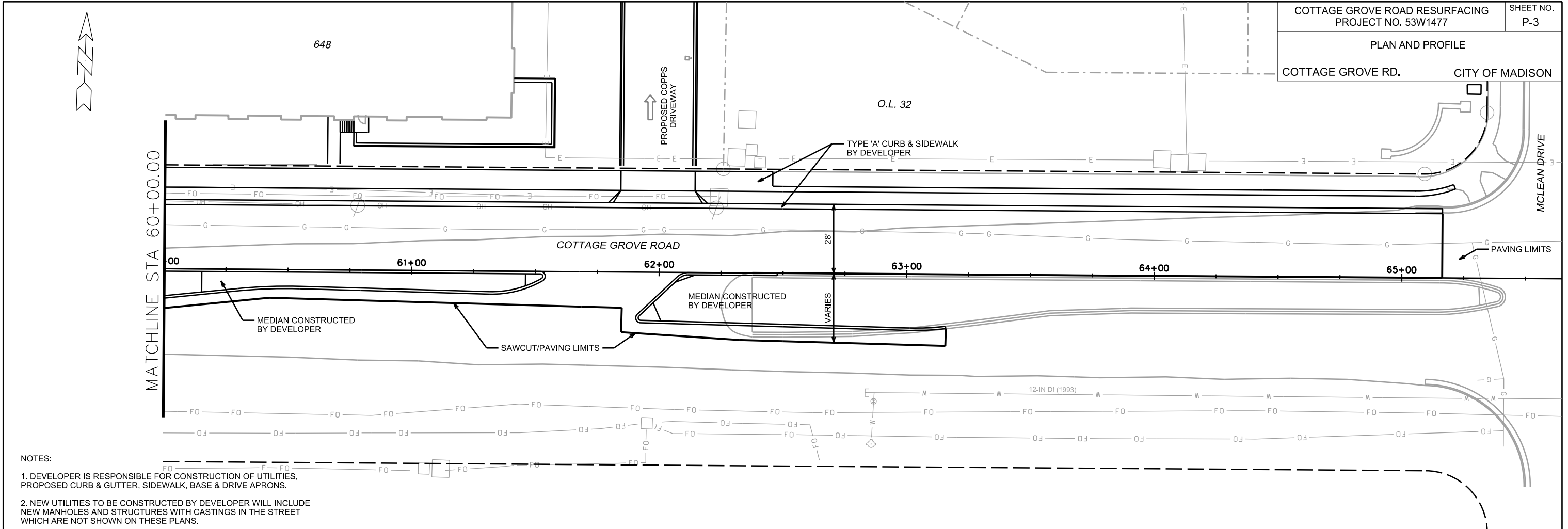


PLOT SCALE: _____

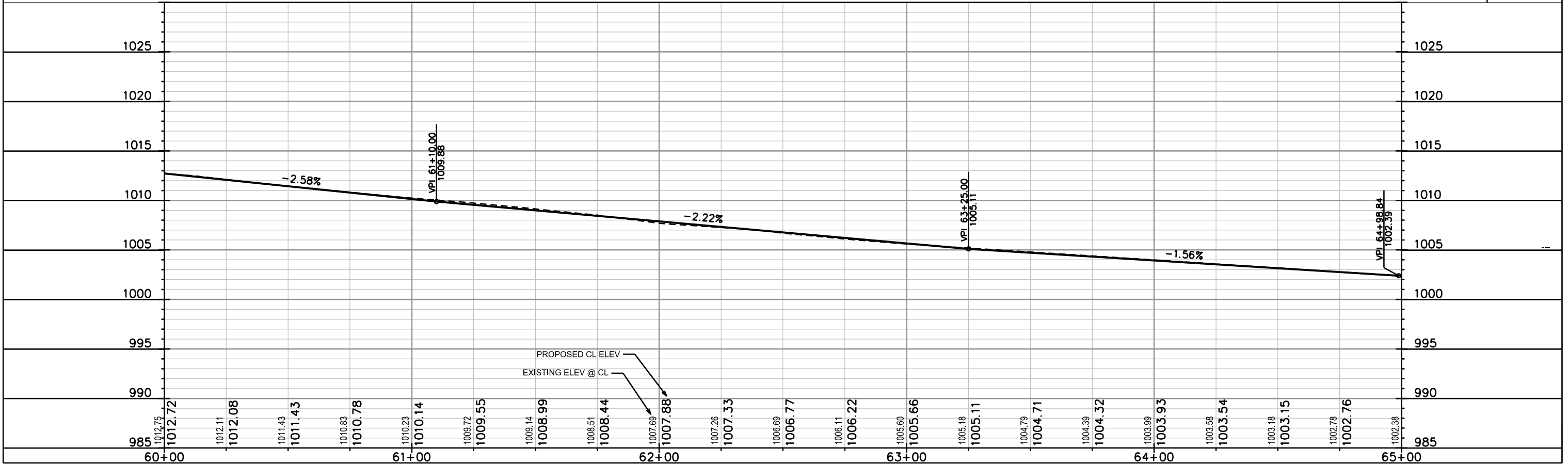
PLOT NAME: _____

REV. DATE: _____

ORIGINATOR: CITY OF MADISON, STREETS DIVISION



- NOTES:
1. DEVELOPER IS RESPONSIBLE FOR CONSTRUCTION OF UTILITIES, PROPOSED CURB & GUTTER, SIDEWALK, BASE & DRIVE APRONS.
 2. NEW UTILITIES TO BE CONSTRUCTED BY DEVELOPER WILL INCLUDE NEW MANHOLES AND STRUCTURES WITH CASTINGS IN THE STREET WHICH ARE NOT SHOWN ON THESE PLANS.

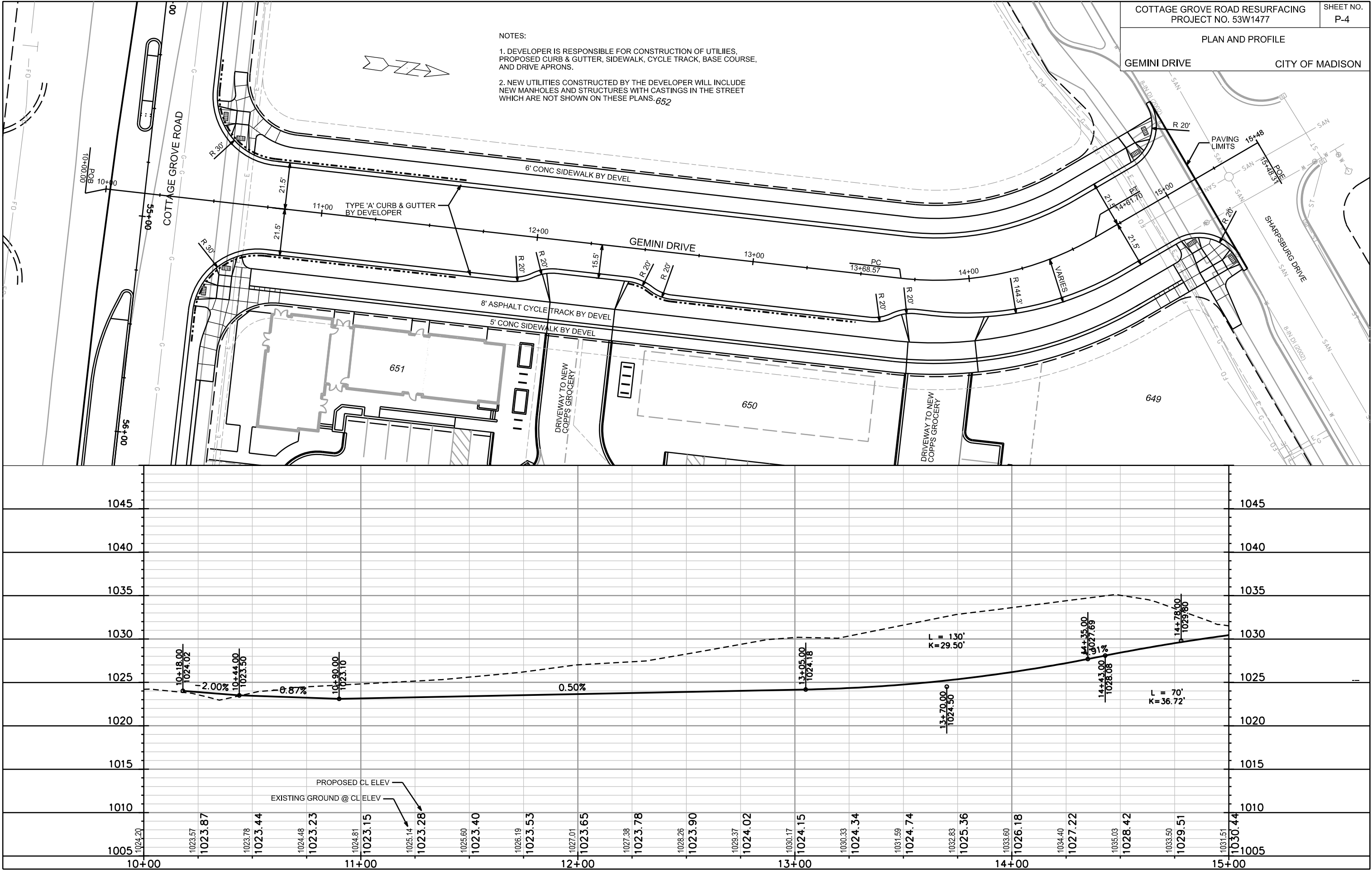


PLOT SCALE: _____

PLOT NAME: _____

REV. DATE: _____

ORIGINATOR: CITY OF MADISON, STREETS DIVISION



PLOT SCALE:

PLOT NAME:

REV. DATE:

ORIGINATOR: CITY OF MADISON, TRAFFIC ENG. DIV.



COTTAGE GROVE RD RESURFACING PROJECT NO. 53W1477		SHEET NO. TC-1
TRAFFIC CONTROL		
PHASE 1		CITY OF MADISON

REV. 7-19-13 TAM

N STAR DR

GEMINI DRIVE

COTTAGE GROVE RD

COTTAGE GROVE RD

MATCHLINE 1

MATCHLINE 1

PLOT SCALE:

PLOT NAME:

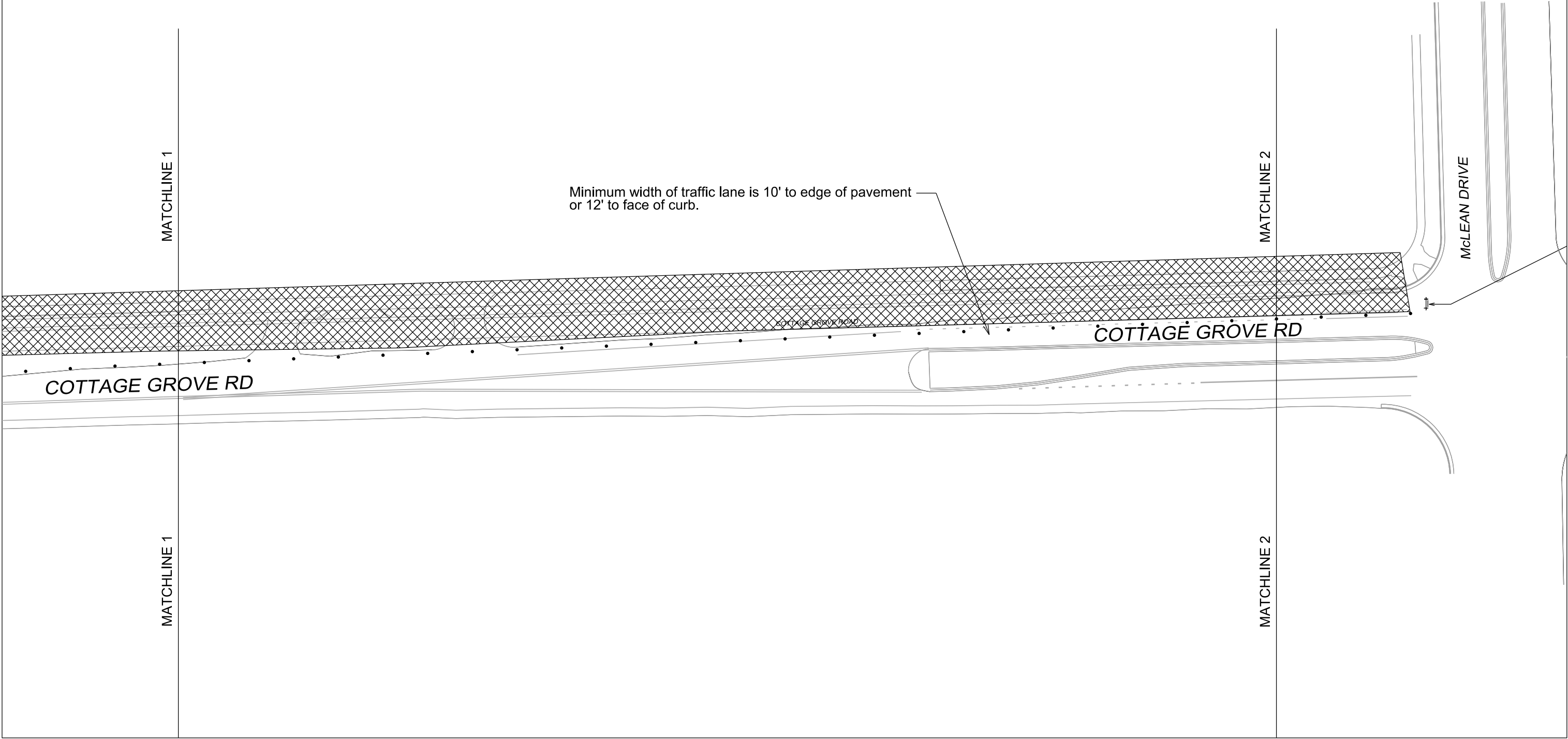
REV. DATE:

ORIGINATOR: CITY OF MADISON, TRAFFIC ENG. DIV.



COTTAGE GROVE RD RESURFACING PROJECT NO. 53W1477		SHEET NO. TC-2
TRAFFIC CONTROL		
PHASE 1		CITY OF MADISON

REV. 7-19-13 TAM



PLOT SCALE:

PLOT NAME:

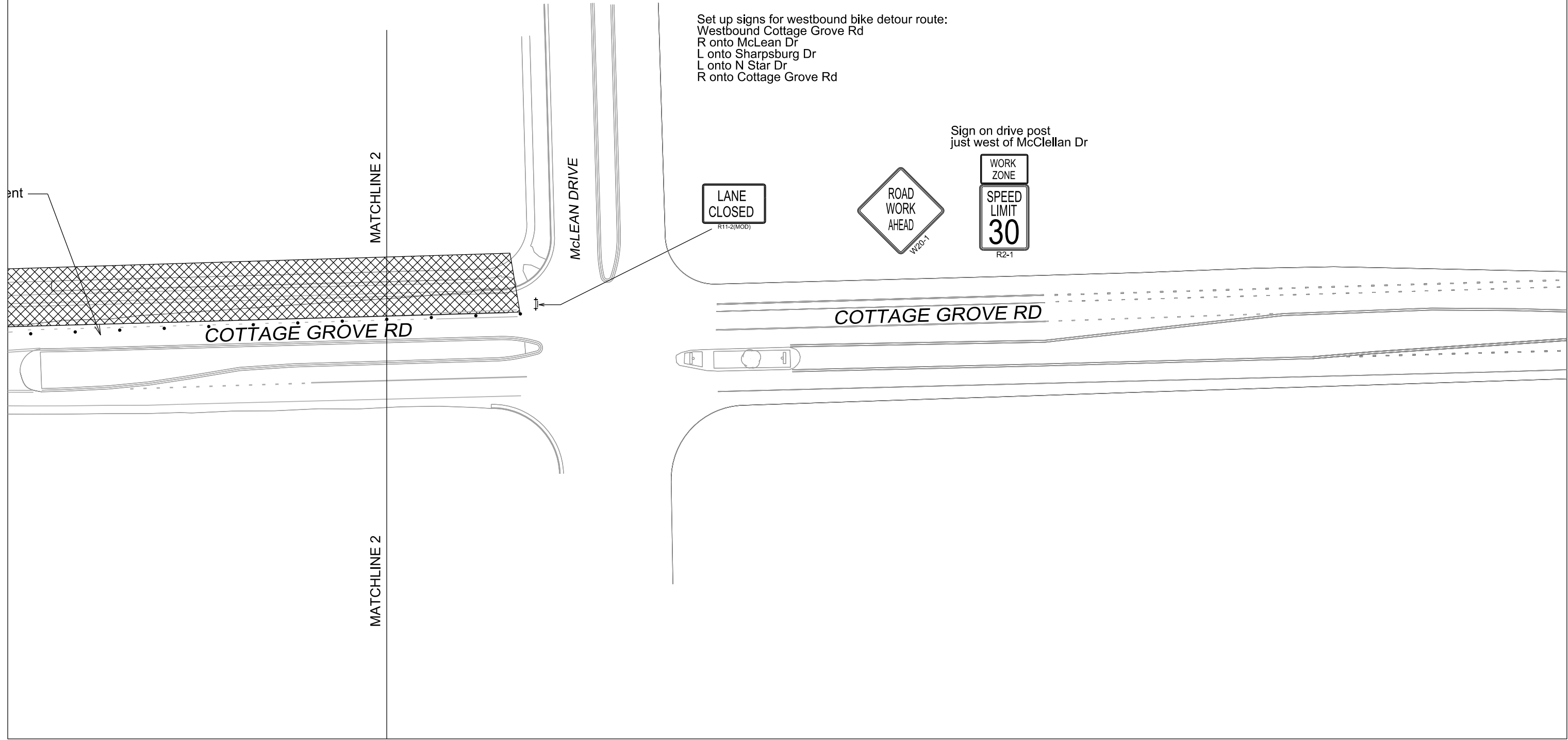
REV. DATE:

ORIGINATOR: CITY OF MADISON, TRAFFIC ENG. DIV.



COTTAGE GROVE RD RESURFACING PROJECT NO. 53W1477		SHEET NO. TC-3
TRAFFIC CONTROL		
PHASE 1		CITY OF MADISON

REV. 7-19-13 TAM



PLOT SCALE:

PLOT NAME:

REV. DATE:

ORIGINATOR: CITY OF MADISON, TRAFFIC ENG. DIV.

COTTAGE GROVE RD RESURFACING PROJECT NO. 53W1477		SHEET NO. TC-4
TRAFFIC CONTROL		
PHASE 2		CITY OF MADISON

REV. 7-19-13 TAM



Bike Detour Route

Create eastbound bike detour route:
Eastbound Cottage Grove Rd
L onto N Star Dr
R onto Sharpsburg Dr
R onto McLean Dr
L onto Kilpatrick Ln
R onto McLellan Dr
L onto Cottage Grove Rd

Keep detour route in place for remainder of project

Minimum width of traffic lane is 10' to edge of pavement
or 12' to face of curb.

Barrels spaced at 30'

Barrels spaced at 30'

Minimum width of traffic lane is 10' to edge of pavement

MATCHLINE 1

MATCHLINE 1

Minimum width of traffic lane i



PLOT SCALE:

PLOT NAME:

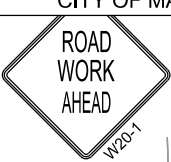
REV. DATE:

ORIGINATOR: CITY OF MADISON, TRAFFIC ENG. DIV.

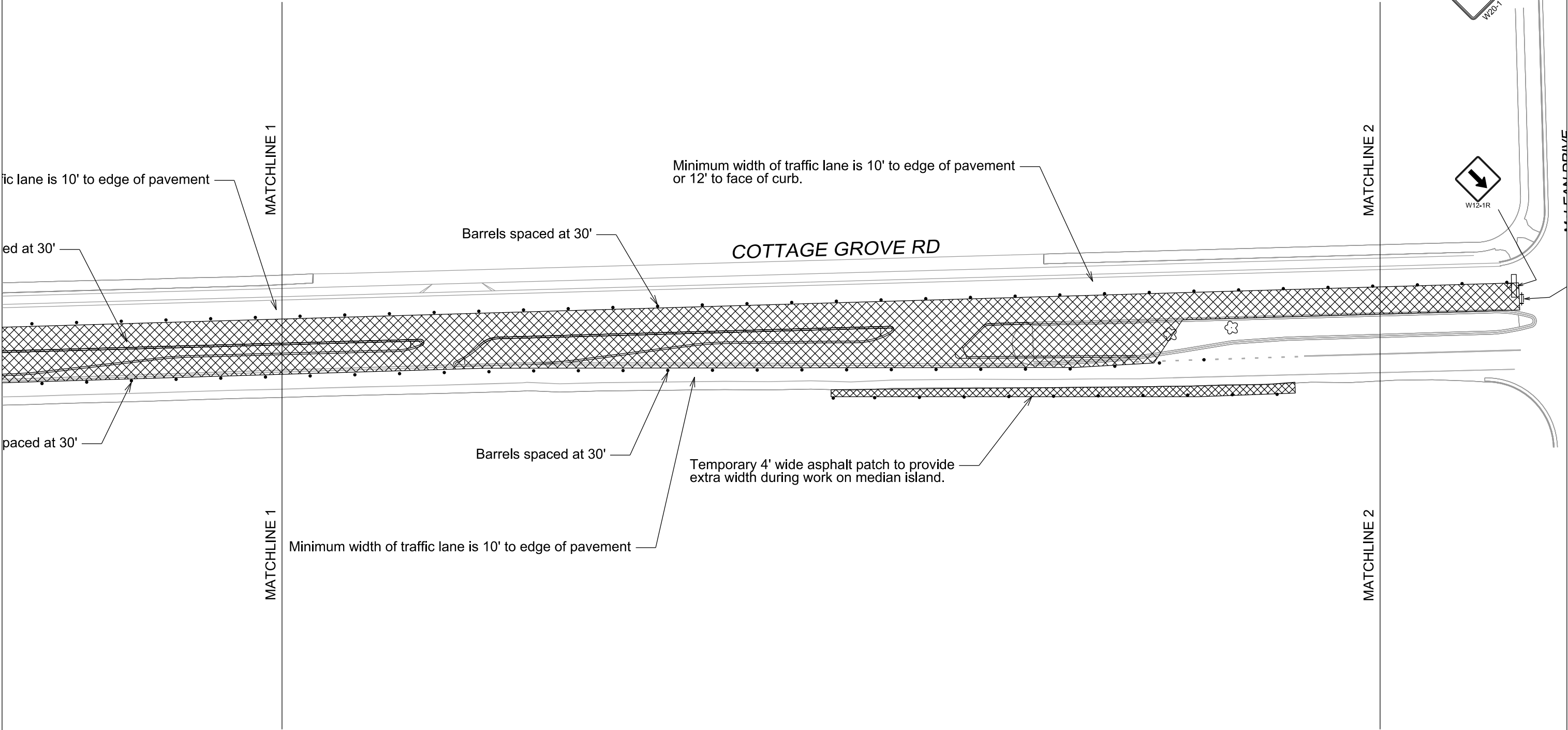


COTTAGE GROVE RD RESURFACING PROJECT NO. 53W1477		SHEET NO. TC-5
TRAFFIC CONTROL		
PHASE 2		CITY OF MADISON

REV. 7-19-13 TAM



WILFORD DRIVE





W12-1R

R11-2(MOD

W20-1

R2-1

DATE: \$\$...plottingdate...\$\$

PLOT SCALE:

PLOT NAME:

REV. DATE:

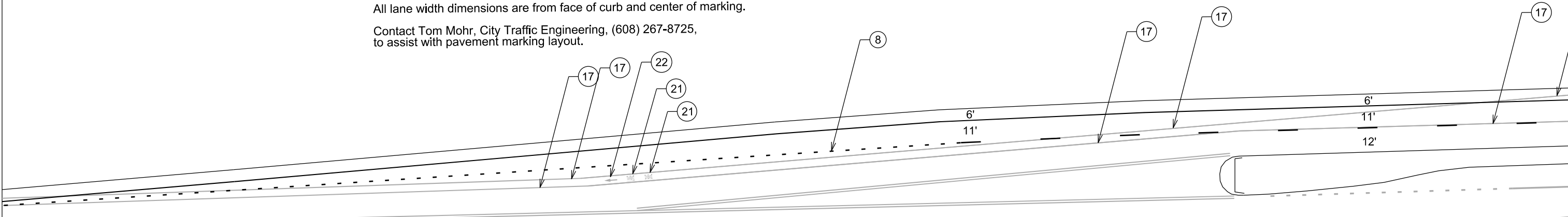
ORIGINATOR: CITY OF MADISON, TRAFFIC ENG. DIV.

TWN. CENT. ADD. TO GRANDVIEW COM. PH. 1 PROJECT NO. 53W1477	SHEET NO. M-1
MARKING PLAN	
COTTAGE GROVE RD	CITY OF MADISON

Callout	Bid Item	Description
1	60802	Pavement Marking Epoxy, 6-Inch White Skips, (10' Line, 30' Gap)
2	60802	Pavement Marking Epoxy, 6-Inch, Solid White
3	60814	Pavement Marking Epoxy, 12-Inch White Crosswalk
4	60803	Pavement Marking Epoxy, 8-Inch Solid White
5	60803	Pavement Marking Epoxy, 8-Inch White Skips, (5' Line, 5' Gap)
6	60834	Pavement Marking Epoxy, Word, "ONLY"
7	60800	Pavement Marking Epoxy, 4-Inch, Solid Yellow
8	60802	Pavement Marking Epoxy, 6-Inch, White Skips (2' Line, 6' Gap)
9	60803	Pavement Marking Epoxy, 8-Inch White Skips, (2' Line, 6' Gap)
10	60818	Pavement Marking Epoxy, 24-Inch White, Stop Line
11	60812	Pavement Marking Epoxy, 6-Inch White, Crosswalk
12	60816	Pavement Marking Epoxy, 18-Inch White, Continental Crosswalk
13	60823	Pavement Marking Epoxy, Symbol, Bike Lane
14	60801	Pavement Marking Epoxy, 4-Inch Double Yellow
15	60800	Pavement Marking Epoxy, 4-Inch Yellow Skips (10' Line, 30' Gap)
16	60829	Pavement Marking Epoxy, Symbol, Left Arrow
17	60880	Pavement Marking Removal, 4-Inch
18	60882	Pavement Marking Removal, 8-Inch
19	60886	Pavement Marking Removal, 4-Inch Double Line
20	60802	Pavement Marking Epoxy, 6-Inch, White Skips (2' Line, 6' Gap)
21	60889	Pavement Marking Removal, Symbol, Bike Lane
22	60891	Pavement Marking Removal, Symbol, Bike Arrow

All lane width dimensions are from face of curb and center of marking.

Contact Tom Mohr, City Traffic Engineering, (608) 267-8725,
to assist with pavement marking layout.



PLOT SCALE:

PLOT NAME:

REV. DATE:

ORIGINATOR: CITY OF MADISON, TRAFFIC ENG. DIV.

MARKING PLAN

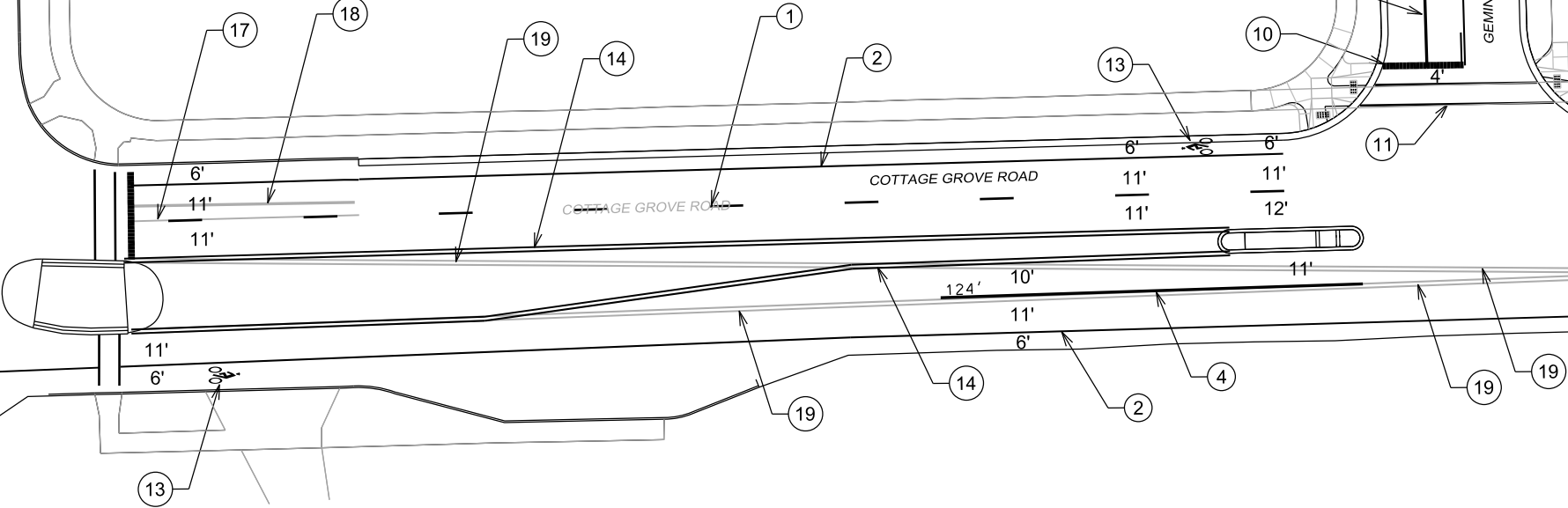
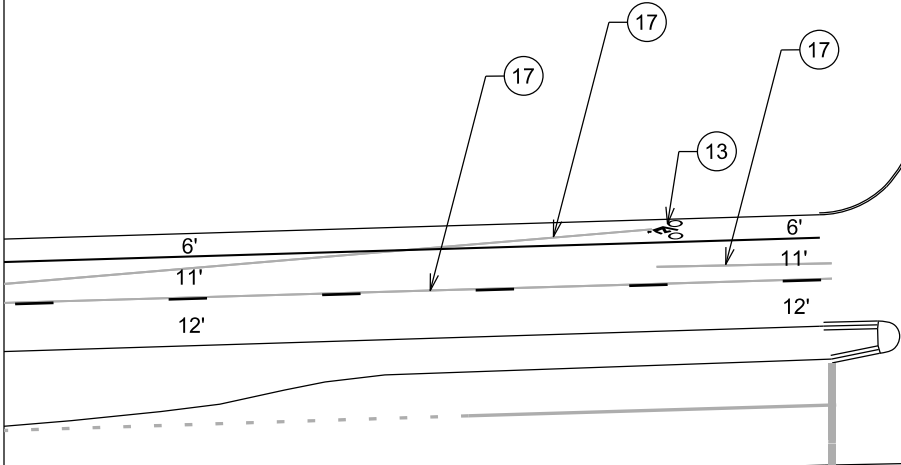
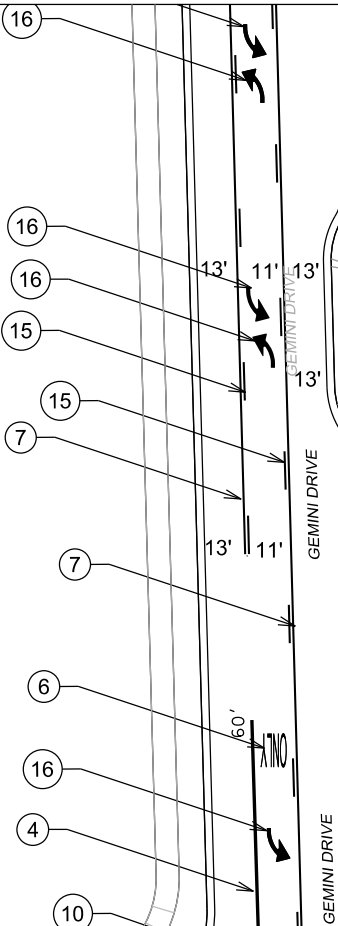
COTTAGE GROVE RD

CITY OF MADISON

Callout	Bid Item	Description
1	60802	Pavement Marking Epoxy, 6-Inch White Skips, (10' Line, 30' Gap)
2	60802	Pavement Marking Epoxy, 6-Inch, Solid White
3	60814	Pavement Marking Epoxy, 12-Inch White Crosswalk
4	60803	Pavement Marking Epoxy, 8-Inch Solid White
5	60803	Pavement Marking Epoxy, 8-Inch White Skips, (5' Line, 5' Gap)
6	60834	Pavement Marking Epoxy, Word, "ONLY"
7	60800	Pavement Marking Epoxy, 4-Inch, Solid Yellow
8	60802	Pavement Marking Epoxy, 6-Inch, White Skips (2' Line, 6' Gap)
9	60803	Pavement Marking Epoxy, 8-Inch White Skips, (2' Line, 6' Gap)
10	60818	Pavement Marking Epoxy, 24-Inch White, Stop Line
11	60812	Pavement Marking Epoxy, 6-Inch White, Crosswalk
12	60816	Pavement Marking Epoxy, 18-Inch White, Continental Crosswalk
13	60823	Pavement Marking Epoxy, Symbol, Bike Lane
14	60801	Pavement Marking Epoxy, 4-Inch Double Yellow
15	60800	Pavement Marking Epoxy, 4-Inch Yellow Skips (10' Line, 30' Gap)
16	60829	Pavement Marking Epoxy, Symbol, Left Arrow
17	60880	Pavement Marking Removal, 4-Inch
18	60882	Pavement Marking Removal, 8-Inch
19	60886	Pavement Marking Removal, 4-Inch Double Line
20	60802	Pavement Marking Epoxy, 6-Inch, White Skips (2' Line, 6' Gap)

All lane width dimensions are from face of curb and center of marking.

Contact Tom Mohr, City Traffic Engineering, (608) 267-8725,
to assist with pavement marking layout.



PLOT SCALE:

PLOT NAME:

REV. DATE:

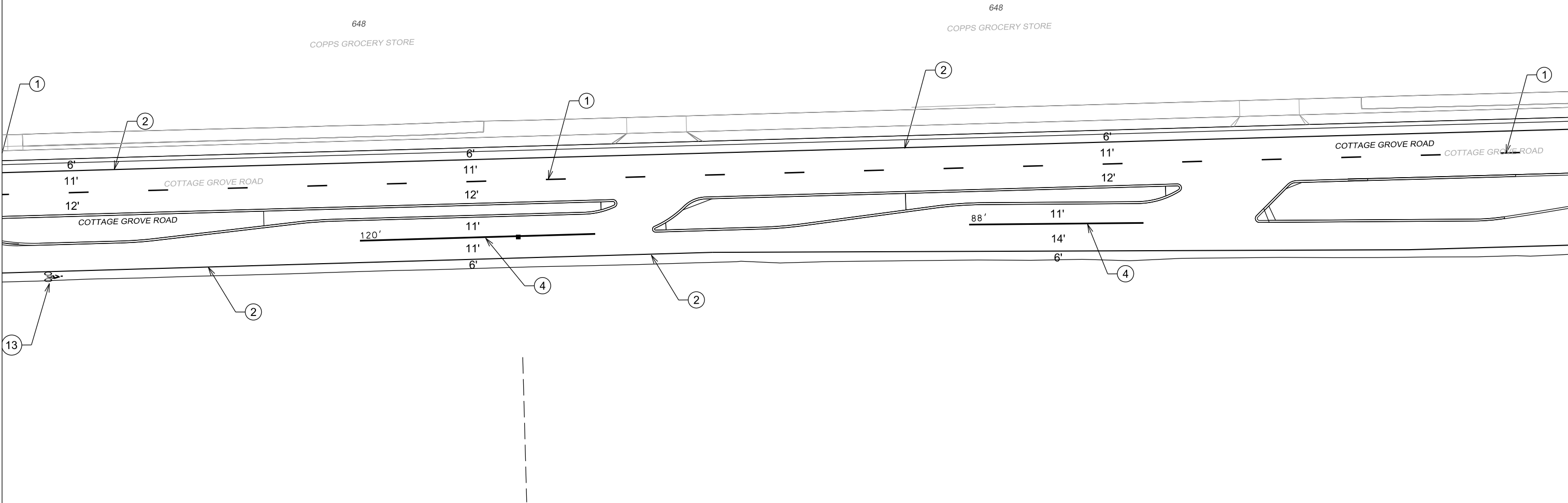
ORIGINATOR: CITY OF MADISON, TRAFFIC ENG. DIV.

Callout	Bid Item	Description
1	60802	Pavement Marking Epoxy, 6-Inch White Skips, (10' Line, 30' Gap)
2	60802	Pavement Marking Epoxy, 6-Inch, Solid White
3	60814	Pavement Marking Epoxy, 12-Inch White Crosswalk
4	60803	Pavement Marking Epoxy, 8-Inch Solid White
5	60803	Pavement Marking Epoxy, 8-Inch White Skips, (5' Line, 5' Gap)
6	60834	Pavement Marking Epoxy, Word, "ONLY"
7	60800	Pavement Marking Epoxy, 4-Inch, Solid Yellow
8	60802	Pavement Marking Epoxy, 6-Inch, White Skips (2' Line, 6' Gap)
9	60803	Pavement Marking Epoxy, 8-Inch White Skips, (2' Line, 6' Gap)
10	60818	Pavement Marking Epoxy, 24-Inch White, Stop Line
11	60812	Pavement Marking Epoxy, 6-Inch White, Crosswalk
12	60816	Pavement Marking Epoxy, 18-Inch White, Continental Crosswalk
13	60823	Pavement Marking Epoxy, Symbol, Bike Lane
14	60801	Pavement Marking Epoxy, 4-Inch Double Yellow
15	60800	Pavement Marking Epoxy, 4-Inch Yellow Skips (10' Line, 30' Gap)
16	60829	Pavement Marking Epoxy, Symbol, Left Arrow
17	60880	Pavement Marking Removal, 4-Inch
18	60882	Pavement Marking Removal, 8-Inch
19	60886	Pavement Marking Removal, 4-Inch Double Line
20	60802	Pavement Marking Epoxy, 6-Inch, White Skips (2' Line, 6' Gap)

All lane width dimensions are from face of curb and center of marking.

Contact Tom Mohr, City Traffic Engineering, (608) 267-8725,
to assist with pavement marking layout.

TWN. CENT. ADD. TO GRANDVIEW COM. PH. 1 PROJECT NO. 53W1477	SHEET NO. M-3
MARKING PLAN	
COTTAGE GROVE RD	CITY OF MADISON



PLOT SCALE:

PLOT NAME:

REV. DATE:

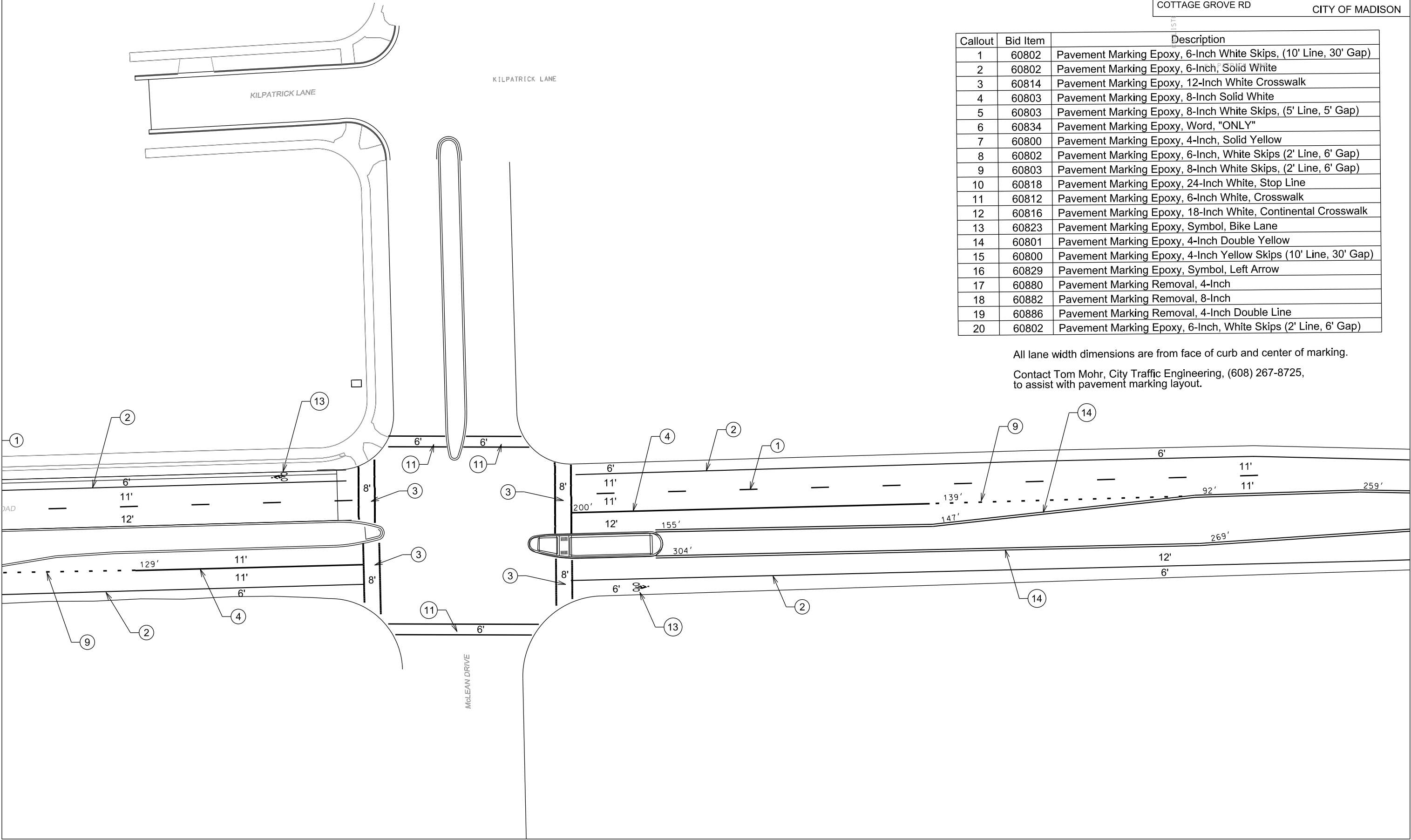
ORIGINATOR: CITY OF MADISON, TRAFFIC ENG. DIV.

TWN. CENT. ADD. TO GRANDVIEW COM. PH. 1 PROJECT NO. 53W1477	SHEET NO. M-4
MARKING PLAN	
COTTAGE GROVE RD	CITY OF MADISON

Callout	Bid Item	Description
1	60802	Pavement Marking Epoxy, 6-Inch White Skips, (10' Line, 30' Gap)
2	60802	Pavement Marking Epoxy, 6-Inch, Solid White
3	60814	Pavement Marking Epoxy, 12-Inch White Crosswalk
4	60803	Pavement Marking Epoxy, 8-Inch Solid White
5	60803	Pavement Marking Epoxy, 8-Inch White Skips, (5' Line, 5' Gap)
6	60834	Pavement Marking Epoxy, Word, "ONLY"
7	60800	Pavement Marking Epoxy, 4-Inch, Solid Yellow
8	60802	Pavement Marking Epoxy, 6-Inch, White Skips (2' Line, 6' Gap)
9	60803	Pavement Marking Epoxy, 8-Inch White Skips, (2' Line, 6' Gap)
10	60818	Pavement Marking Epoxy, 24-Inch White, Stop Line
11	60812	Pavement Marking Epoxy, 6-Inch White, Crosswalk
12	60816	Pavement Marking Epoxy, 18-Inch White, Continental Crosswalk
13	60823	Pavement Marking Epoxy, Symbol, Bike Lane
14	60801	Pavement Marking Epoxy, 4-Inch Double Yellow
15	60800	Pavement Marking Epoxy, 4-Inch Yellow Skips (10' Line, 30' Gap)
16	60829	Pavement Marking Epoxy, Symbol, Left Arrow
17	60880	Pavement Marking Removal, 4-Inch
18	60882	Pavement Marking Removal, 8-Inch
19	60886	Pavement Marking Removal, 4-Inch Double Line
20	60802	Pavement Marking Epoxy, 6-Inch, White Skips (2' Line, 6' Gap)

All lane width dimensions are from face of curb and center of marking.

Contact Tom Mohr, City Traffic Engineering, (608) 267-8725,
to assist with pavement marking layout.



PLOT SCALE:

PLOT NAME:

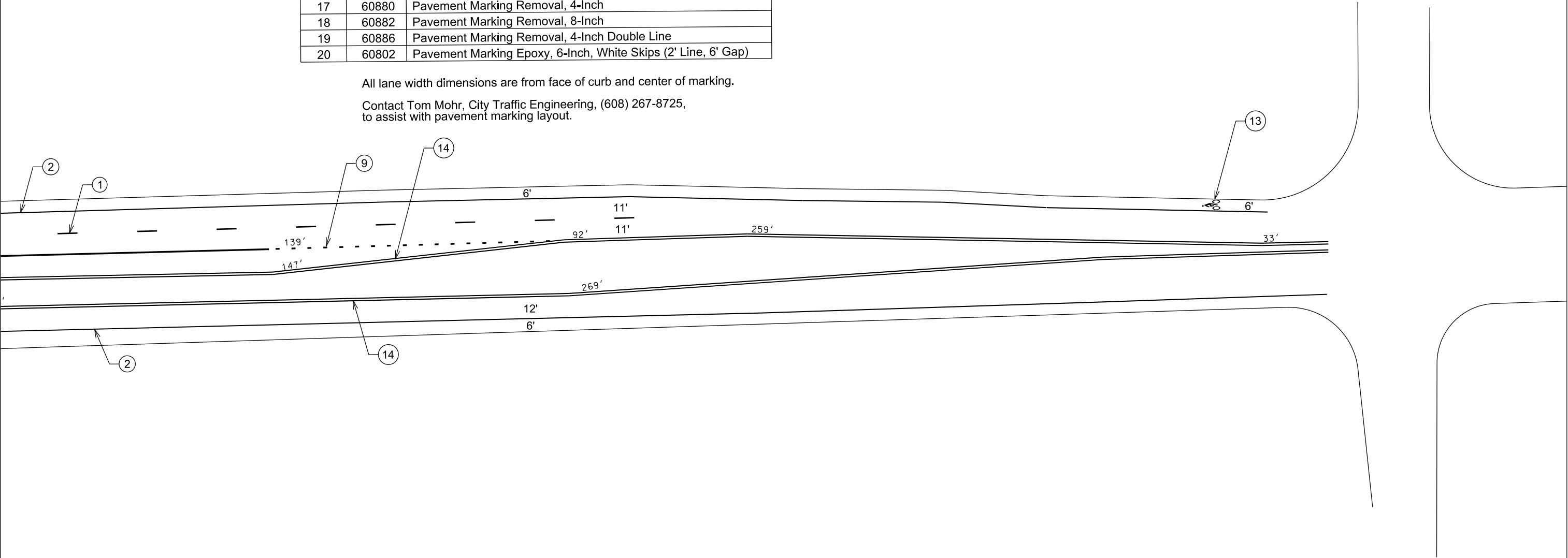
REV. DATE:

ORIGINATOR: CITY OF MADISON, TRAFFIC ENG. DIV.

Callout	Bid Item	Description
1	60802	Pavement Marking Epoxy, 6-Inch White Skips, (10' Line, 30' Gap)
2	60802	Pavement Marking Epoxy, 6-Inch, Solid White
3	60814	Pavement Marking Epoxy, 12-Inch White Crosswalk
4	60803	Pavement Marking Epoxy, 8-Inch Solid White
5	60803	Pavement Marking Epoxy, 8-Inch White Skips, (5' Line, 5' Gap)
6	60834	Pavement Marking Epoxy, Word, "ONLY"
7	60800	Pavement Marking Epoxy, 4-Inch, Solid Yellow
8	60802	Pavement Marking Epoxy, 6-Inch, White Skips (2' Line, 6' Gap)
9	60803	Pavement Marking Epoxy, 8-Inch White Skips, (2' Line, 6' Gap)
10	60818	Pavement Marking Epoxy, 24-Inch White, Stop Line
11	60812	Pavement Marking Epoxy, 6-Inch White, Crosswalk
12	60816	Pavement Marking Epoxy, 18-Inch White, Continental Crosswalk
13	60823	Pavement Marking Epoxy, Symbol, Bike Lane
14	60801	Pavement Marking Epoxy, 4-Inch Double Yellow
15	60800	Pavement Marking Epoxy, 4-Inch Yellow Skips (10' Line, 30' Gap)
16	60829	Pavement Marking Epoxy, Symbol, Left Arrow
17	60880	Pavement Marking Removal, 4-Inch
18	60882	Pavement Marking Removal, 8-Inch
19	60886	Pavement Marking Removal, 4-Inch Double Line
20	60802	Pavement Marking Epoxy, 6-Inch, White Skips (2' Line, 6' Gap)

All lane width dimensions are from face of curb and center of marking.

Contact Tom Mohr, City Traffic Engineering, (608) 267-8725,
to assist with pavement marking layout.

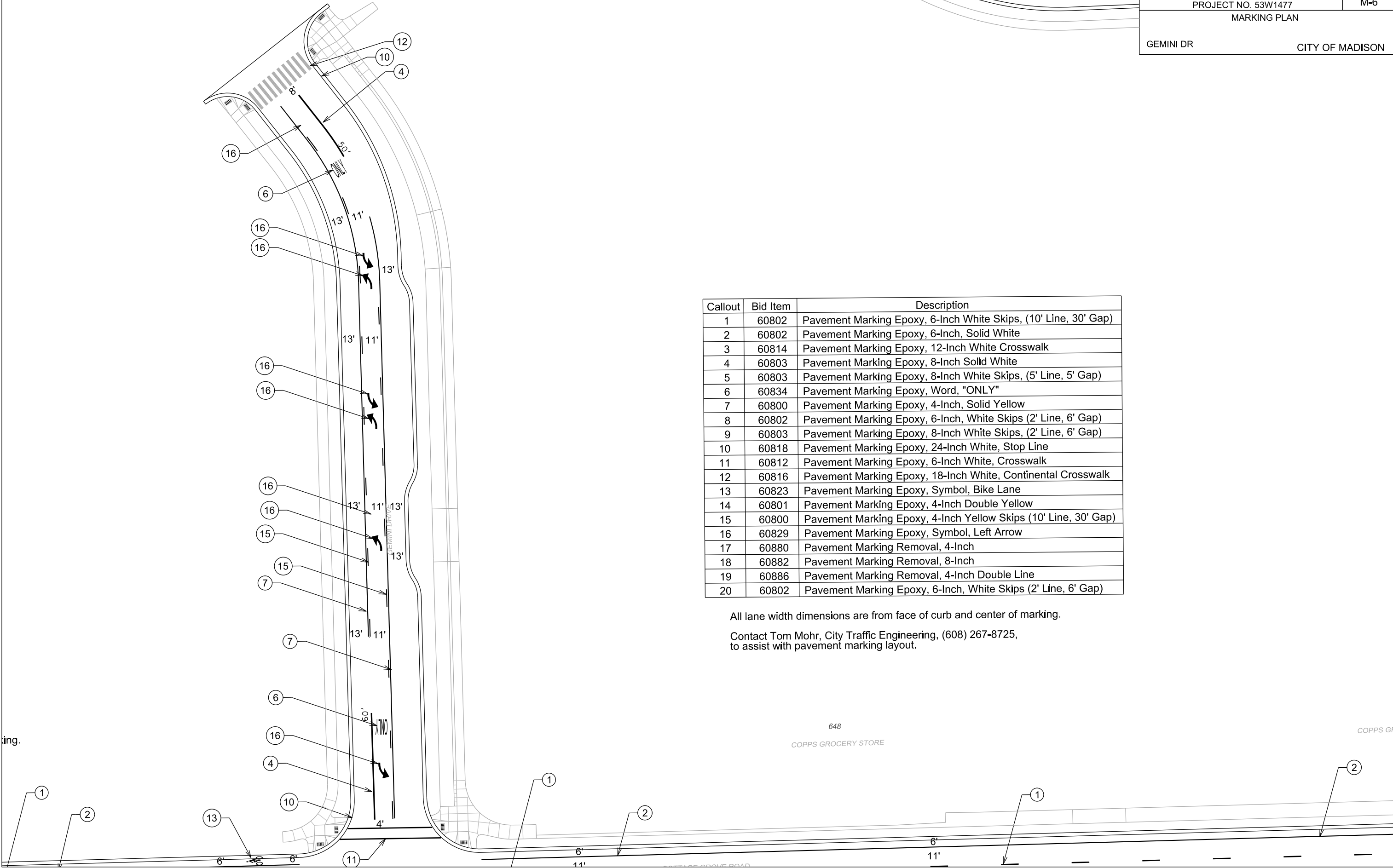


PLOT SCALE:

PLOT NAME:

REV. DATE:

ORIGINATOR: CITY OF MADISON, TRAFFIC ENG. DIV.



Callout	Bid Item	Description
1	60802	Pavement Marking Epoxy, 6-Inch White Skips, (10' Line, 30' Gap)
2	60802	Pavement Marking Epoxy, 6-Inch, Solid White
3	60814	Pavement Marking Epoxy, 12-Inch White Crosswalk
4	60803	Pavement Marking Epoxy, 8-Inch Solid White
5	60803	Pavement Marking Epoxy, 8-Inch White Skips, (5' Line, 5' Gap)
6	60834	Pavement Marking Epoxy, Word, "ONLY"
7	60800	Pavement Marking Epoxy, 4-Inch, Solid Yellow
8	60802	Pavement Marking Epoxy, 6-Inch, White Skips (2' Line, 6' Gap)
9	60803	Pavement Marking Epoxy, 8-Inch White Skips, (2' Line, 6' Gap)
10	60818	Pavement Marking Epoxy, 24-Inch White, Stop Line
11	60812	Pavement Marking Epoxy, 6-Inch White, Crosswalk
12	60816	Pavement Marking Epoxy, 18-Inch White, Continental Crosswalk
13	60823	Pavement Marking Epoxy, Symbol, Bike Lane
14	60801	Pavement Marking Epoxy, 4-Inch Double Yellow
15	60800	Pavement Marking Epoxy, 4-Inch Yellow Skips (10' Line, 30' Gap)
16	60829	Pavement Marking Epoxy, Symbol, Left Arrow
17	60880	Pavement Marking Removal, 4-Inch
18	60882	Pavement Marking Removal, 8-Inch
19	60886	Pavement Marking Removal, 4-Inch Double Line
20	60802	Pavement Marking Epoxy, 6-Inch, White Skips (2' Line, 6' Gap)

All lane width dimensions are from face of curb and center of marking.

Contact Tom Mohr, City Traffic Engineering, (608) 267-8725,
to assist with pavement marking layout.