

Madison, Wisconsin

# CITY OF MADISON

## MADISON WATER UTILITY

### PUBLIC WORKS PLAN OF PROPOSED IMPROVEMENT

PUBLIC IMPROVEMENT PROJECT APPROVED

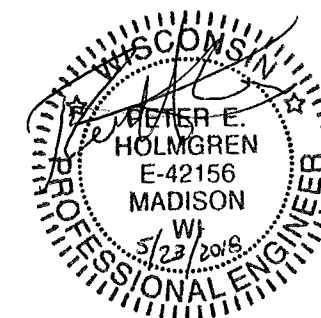
APRIL 10, 2018

BY THE COMMON COUNCIL OF MADISON, WISCONSIN

PUBLIC IMPROVEMENT DESIGN APPROVED BY:

*[Signature]* 5/23/18  
Principal Engineer Date  
Madison Water Utility

WATER DESIGNED BY:

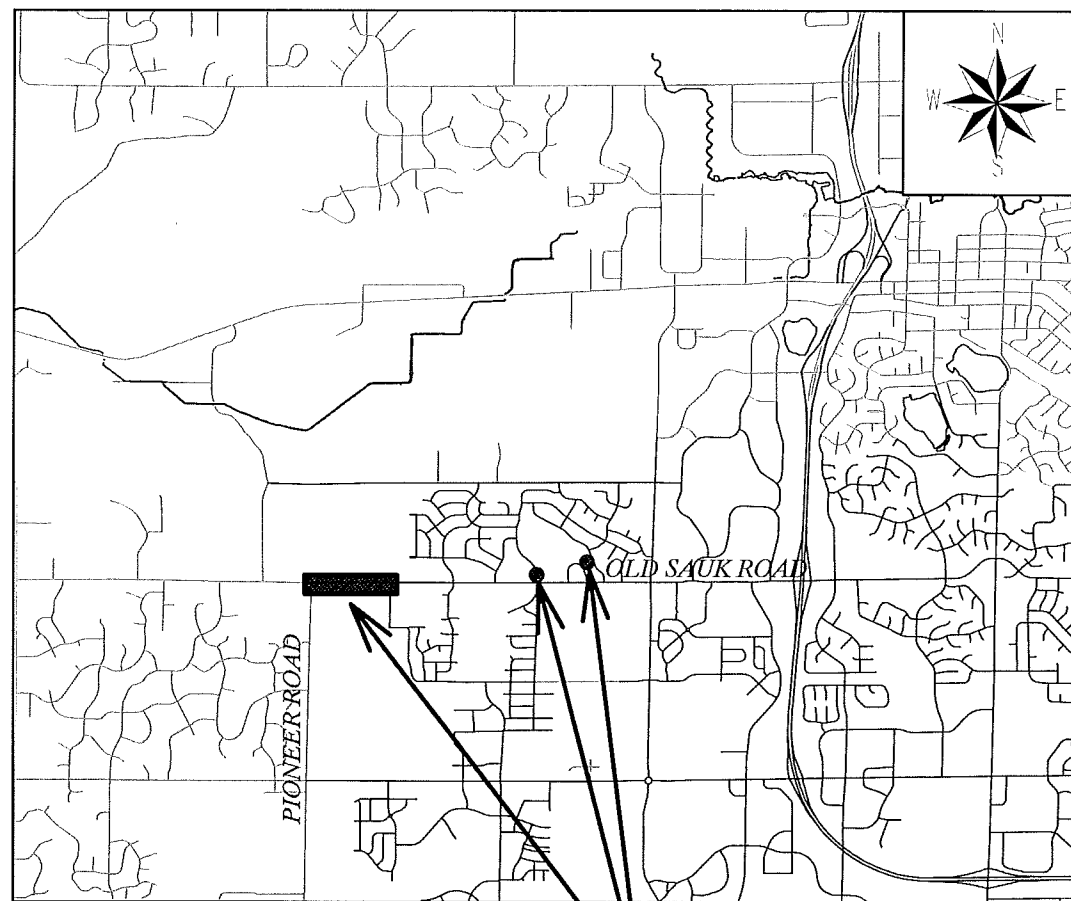


#### INDEX OF SHEETS

SHEET NO.		TITLE SHEET
SHEET NO.	1	TITLE SHEET
SHEET NO.	W-0	WATER PIPELINE OVERVIEW
SHEET NO.	W-1 TO W-3	WATER PLAN & PROFILE
SHEET NO.	W-4 TO W-5	PRV (BEAR CLAW) PLAN & DETAILS
SHEET NO.	W-6 TO W-7	PRV (BPS 128) PLAN & DETAILS
SHEET NO.	W-8	MATERIAL ESTIMATE AND DETAILS

## OLD SAUK ROAD WATER PIPELINE 2018

CITY PROJECT NO. 10445  
MUNIS NO. 10445-86-179  
CONTRACT NO. 8186



PROJECT LOCATIONS

CONVENTIONAL SIGNS	
FIELD VERIFY ALL UTILITY LOCATIONS	
GAS	— G —
STORM SEWER	— ST —
SANITARY SEWER	— SAN —
WATER	— W —
BURIED ELECTRIC	— E —
OVERHEAD ELECTRIC	— OH —
POWER POLE	□
ADA COMPLIANT RAMP W/ DETECTABLE WARNING FIELD	▣
COMBUSTIBLE FLUIDS	★

PLOT SCALE: 1" = 1'

PLOT NAME: —

REV. DATE: 5/23/2018 1:47 PM

ORIGINATOR: CITY\_OF\_MADISON\_WATER\_UTILITY



OLD SAUK ROAD TRAFFIC MUST ALWAYS BE KEPT OPEN; SOUTHERN LANE MAY BE CLOSED DURING OFF-PEAK HOURS IF FLAGGERS ARE USED; REFER TO TRAFFIC SECTIONS IN SPECIAL PROVISIONS

WATER TOWER CONSTRUCTION SITE ENTRANCE; COORDINATE ENTRY WITH WATER TOWER CONTRACTOR AS NEEDED

INSTALL WATER MAIN ON MADISON WATER UTILITY WATER TOWER SITE; COORDINATE WITH WATER TOWER CONTRACTOR WHILE ON PREMISES

INSTALL OPEN-TRENCH 16-INCH WATER MAIN SOUTH OF OLD SAUK ROAD DITCH; REMOVE TREES AS NEEDED; REFER TO SPECIAL PROVISIONS REGARDING ENTRY LIMITATIONS ONTO PRIVATE PROPERTY AT 626 SCHEWE ROAD.

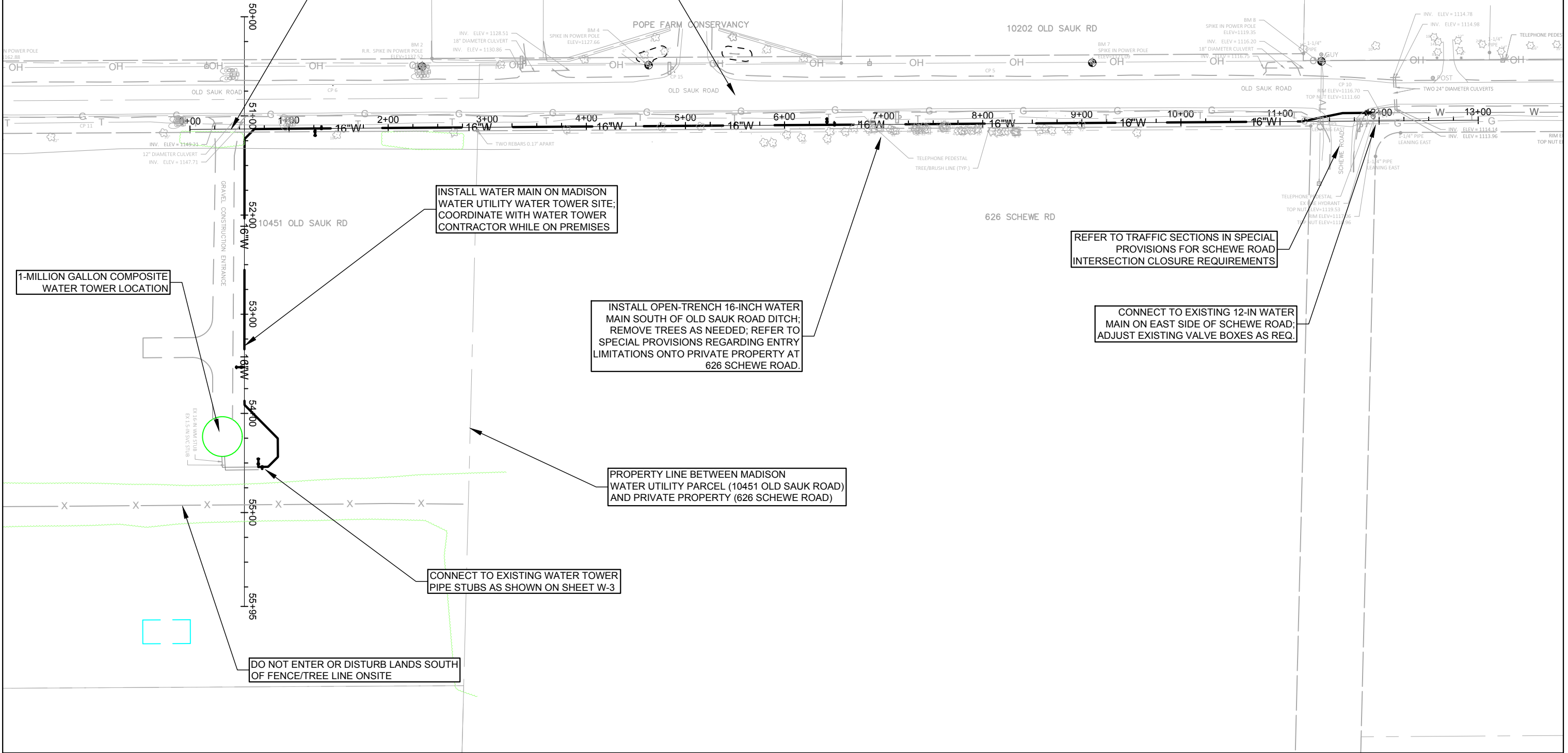
REFER TO TRAFFIC SECTIONS IN SPECIAL PROVISIONS FOR SCHEWE ROAD INTERSECTION CLOSURE REQUIREMENTS

CONNECT TO EXISTING 12-IN WATER MAIN ON EAST SIDE OF SCHEWE ROAD; ADJUST EXISTING VALVE BOXES AS REQ.

PROPERTY LINE BETWEEN MADISON WATER UTILITY PARCEL (10451 OLD SAUK ROAD) AND PRIVATE PROPERTY (626 SCHEWE ROAD)

CONNECT TO EXISTING WATER TOWER PIPE STUBS AS SHOWN ON SHEET W-3

DO NOT ENTER OR DISTURB LANDS SOUTH OF FENCE/TREE LINE ONSITE

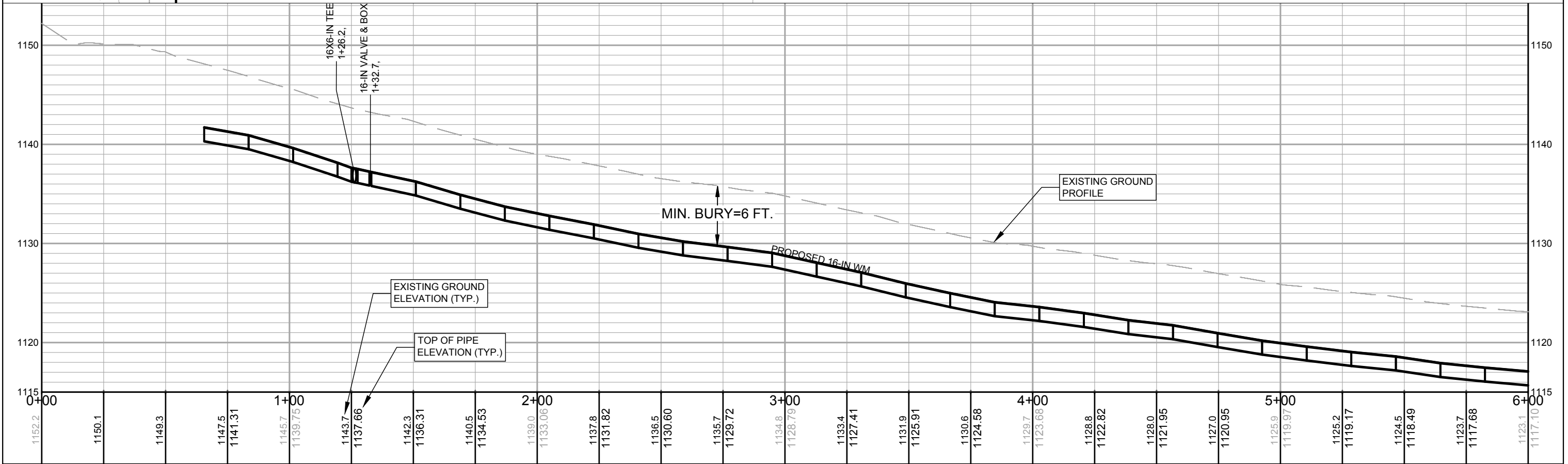
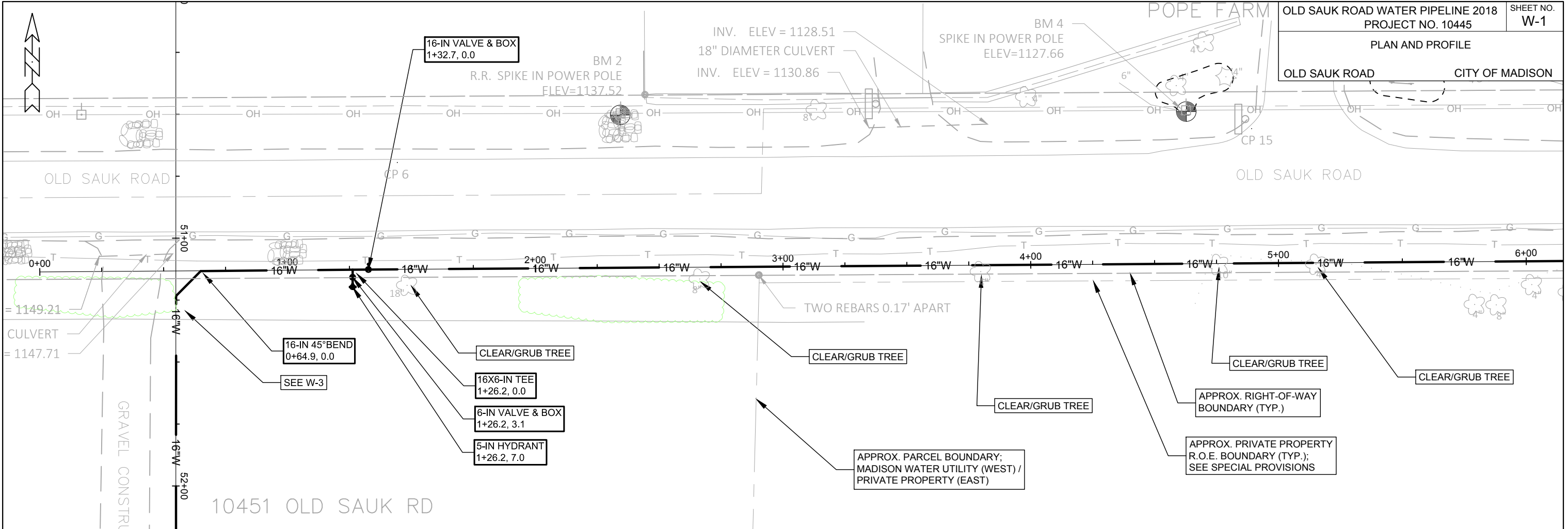


PLOT SCALE: 1" = 100'

PLOT NAME: ---

REV. DATE: ---

ORIGINATOR: MADISON WATER UTILITY: Wupsh



PLOT SCALE: 1" = 40'

PLOT NAME: ---

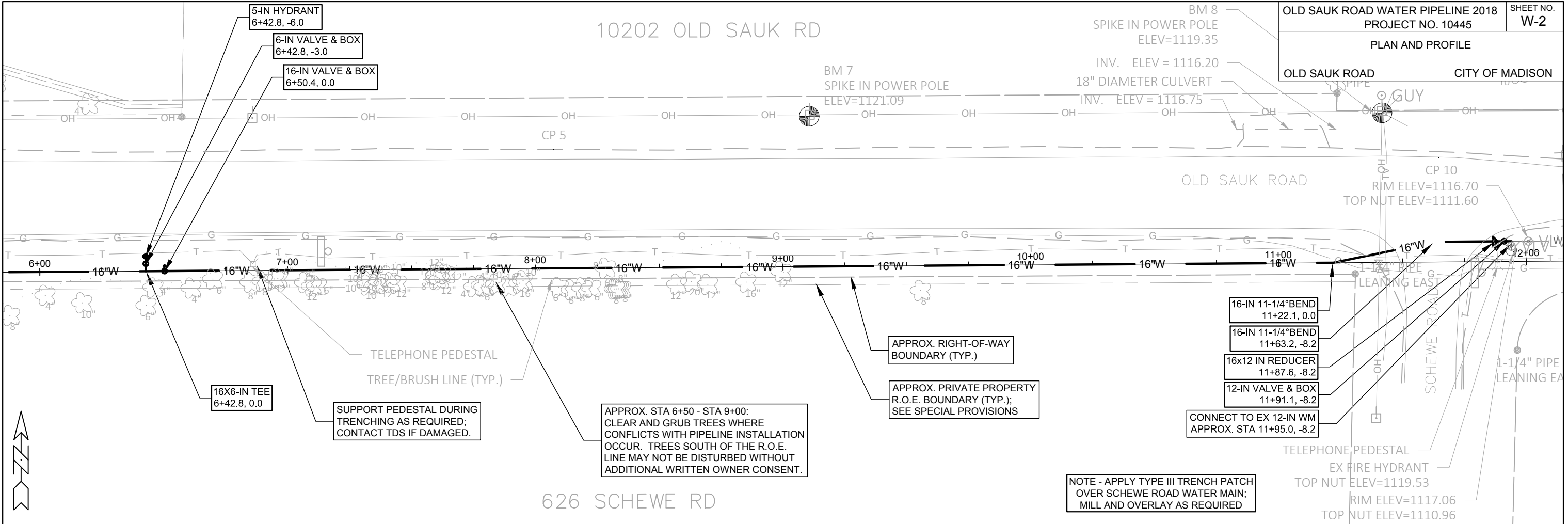
REV. DATE: ---

ORIGINATOR: MADISON WATER UTILITY: Wupsh

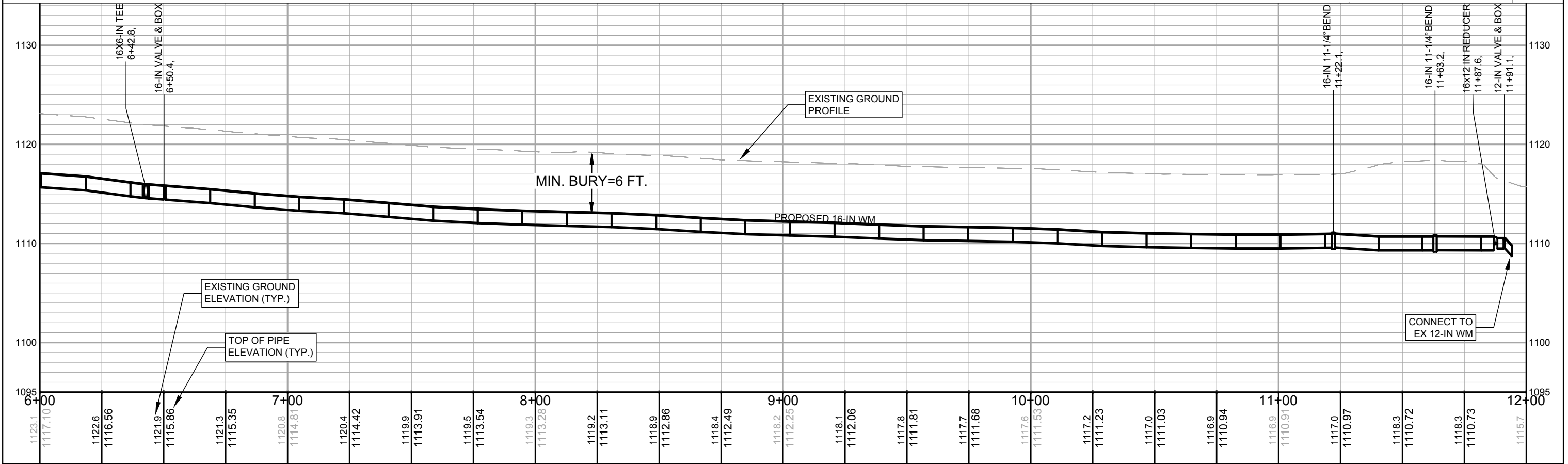
10202 OLD SAUK RD

OLD SAUK ROAD WATER PIPELINE 2018  
PROJECT NO. 10445  
PLAN AND PROFILE  
OLD SAUK ROAD CITY OF MADISON

SHEET NO.  
W-2



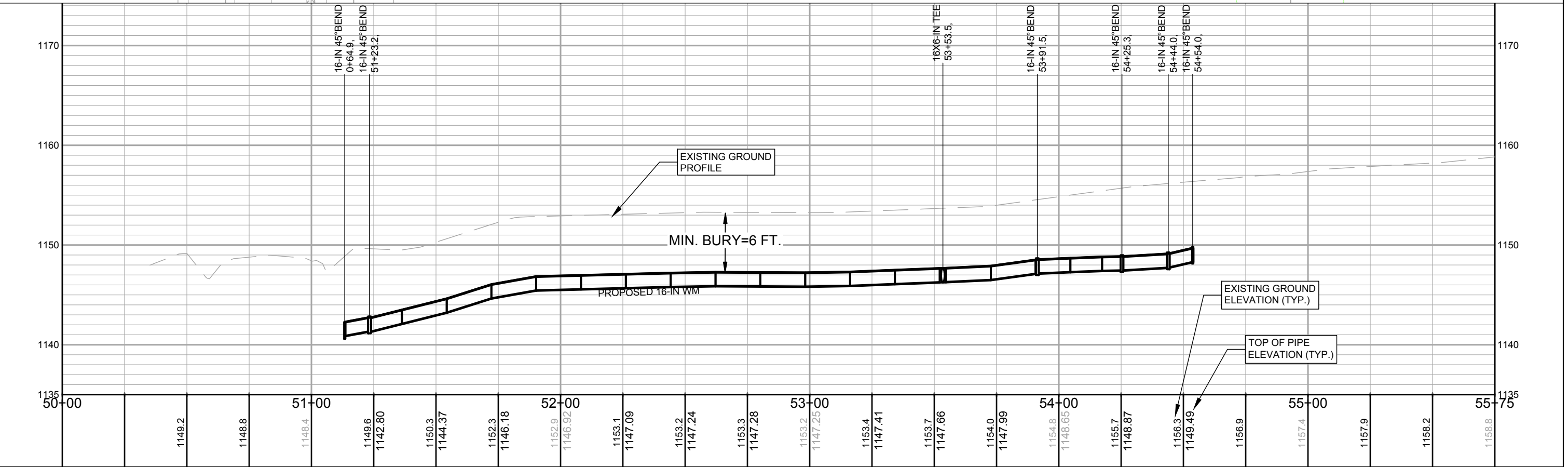
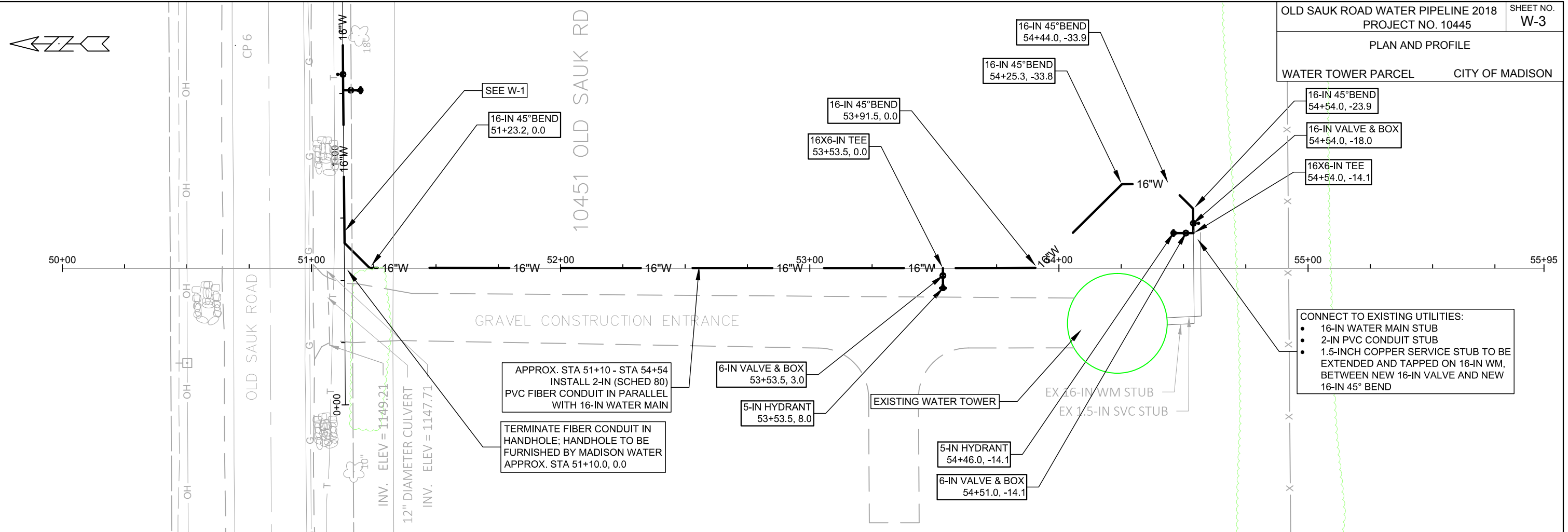
626 SCHEWE RD



PLOT SCALE: 1" = 40'

REV. DATE: ---

ORIGINATOR: MADISON WATER UTILITY: Wupsh

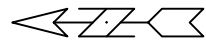


PLOT SCALE: 1" = 40'

PLOT NAME: ---

REV. DATE: ---

ORIGINATOR: MADISON WATER UTILITY: Wupsh



702 BEAR CLAW WAY

APPROX. NEW WATER MAIN  
AND FITTINGS;  
SEE DETAIL DRAWING W-5

APPROX. PRV STRUCTURE  
LOCATION; SEE DETAIL  
DRAWING W-5

REMOVE AND REPLACE TYPE-A  
CONCRETE CURB AND GUTTER  
AS REQUIRED

RESEED AND RESTORE  
TERRACE AREA AS REQ.

SIDEWALK

8-IN D.I. (2000)

BEAR CLAW WAY

SIDEWALK

MILL AND OVERLAY STREET AREA;  
APPROX. 50-FT X 16-FT STREET PATCH

701 BEAR CLAW WAY

OLD SAUK ROAD

12-IN D.I. W (2000)

12-IN D.I. W (2000)

EI 236.40

75' of PVC 2000

EI 236.84

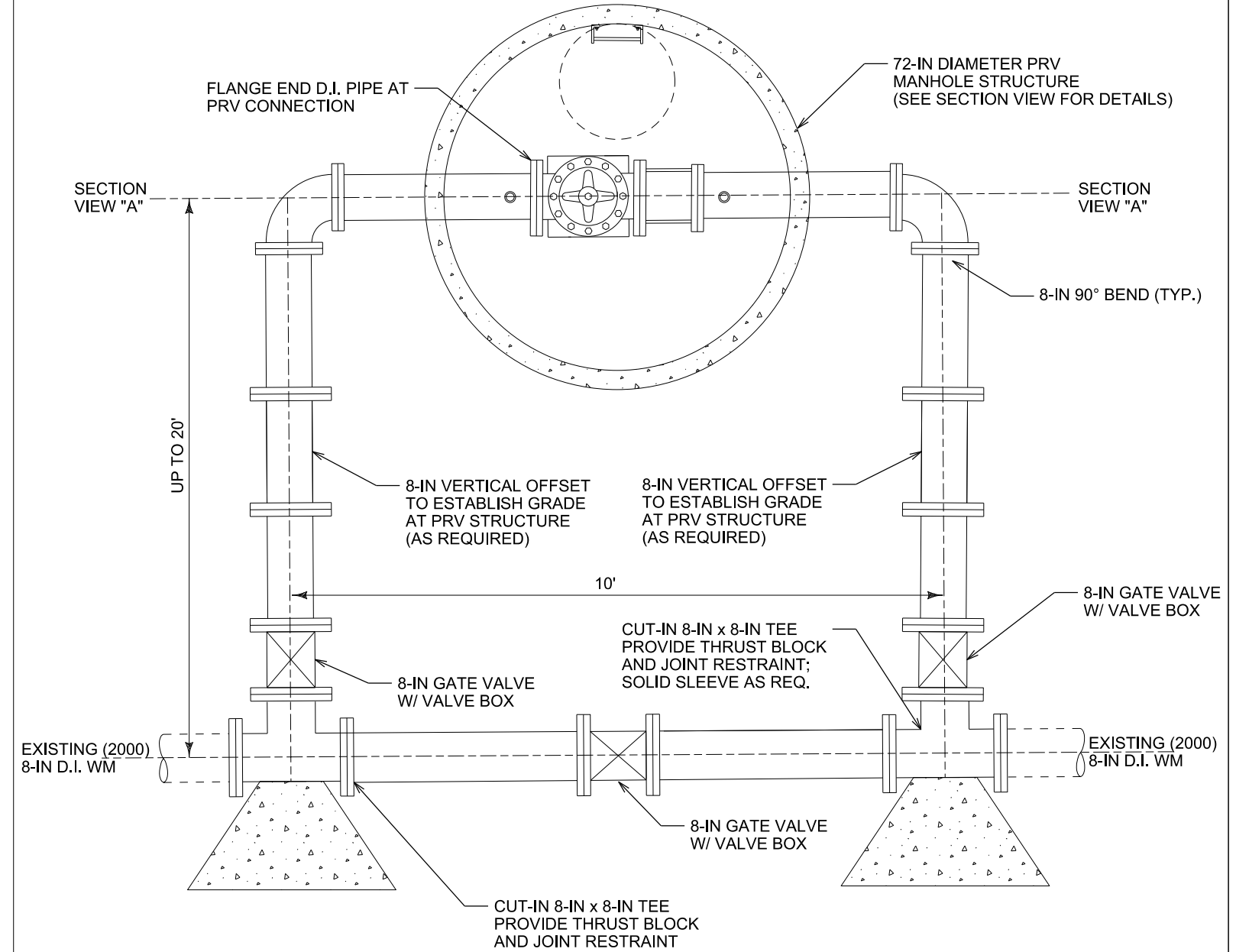
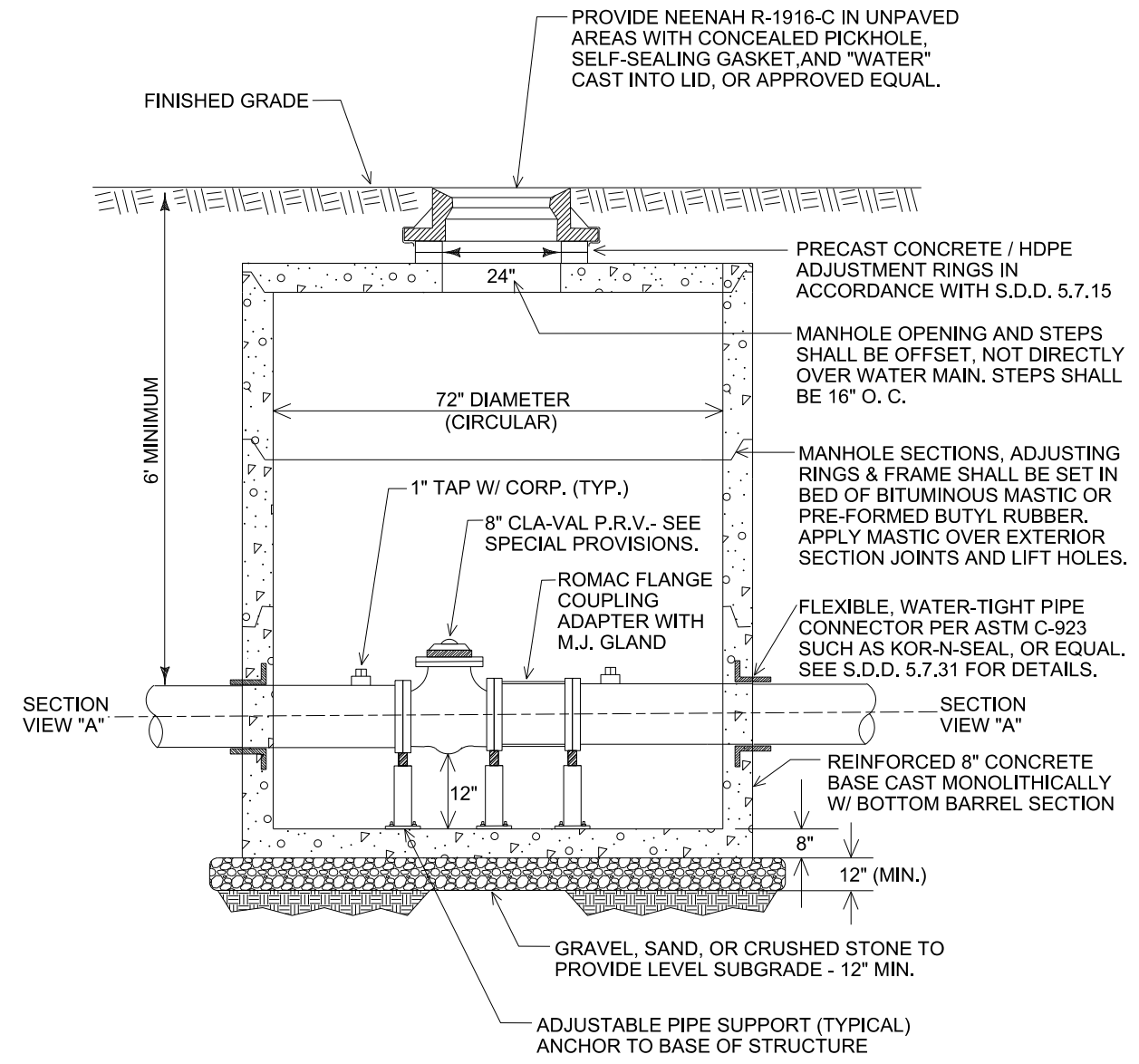
PLOT SCALE: 1" = 20'

PLOT NAME: ---

REV. DATE: ---

ORIGINATOR: MADISON WATER UTILITY: Wupsh

### PRESSURE REDUCING VALVE MANHOLE (SECTION A-A - NTS)



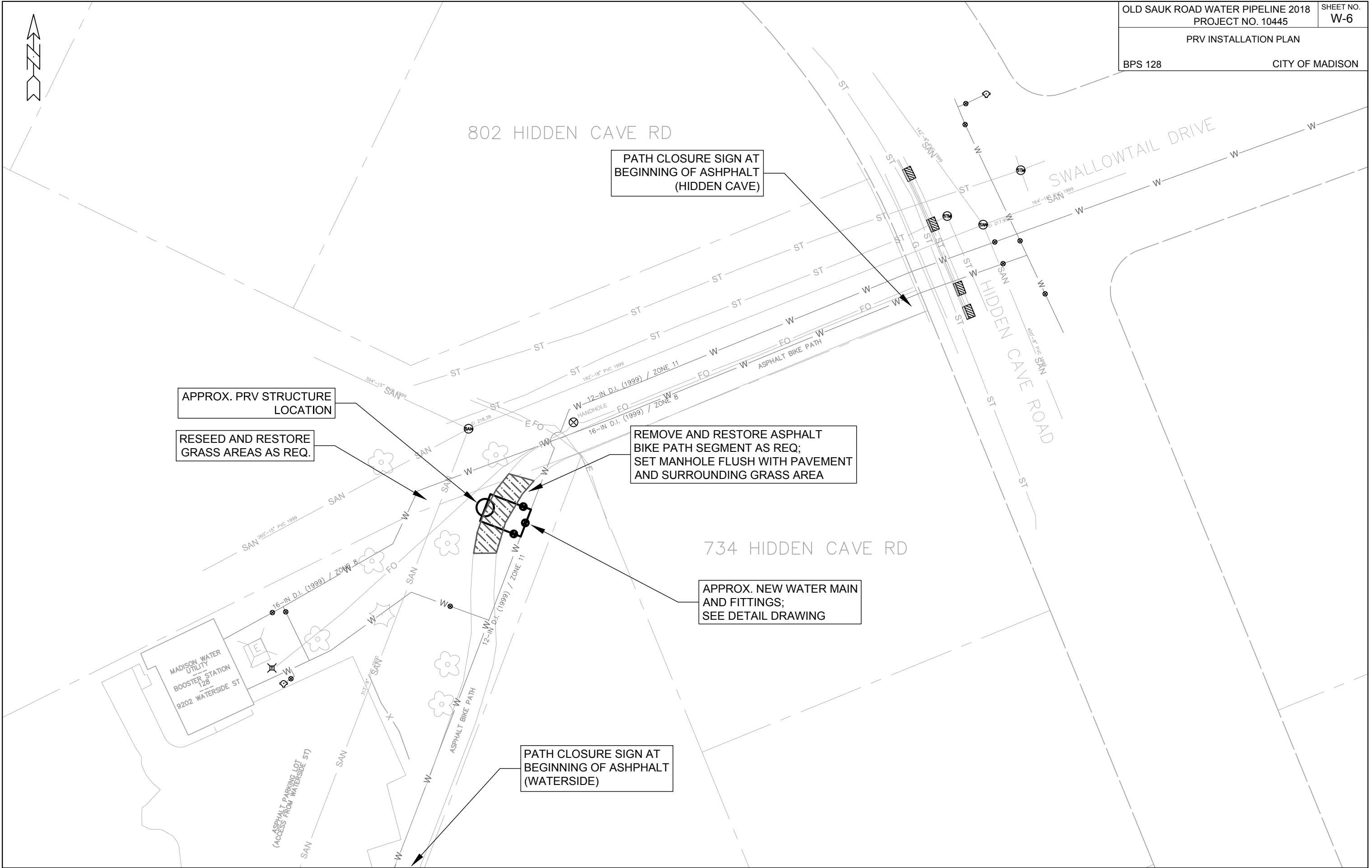
### PRESSURE REDUCING VALVE MANHOLE / STANDARD PIPING CONFIGURATION (PLAN VIEW - NTS)

**NOTES:**

1. THE CONTRACT UNIT PRICE FOR THE LUMP SUM BID ITEM 90160 "INSTALL PRV - BEAR CLAW" SHALL INCLUDE ALL COSTS OF FURNISHING AND PLACING THE LEVELING BASE AND STRUCTURE, AS SPECIFIED; AND ALSO ALL COSTS ASSOCIATED WITH CONSTRUCTION OF THE PIPING, AS SPECIFIED (CUT-IN CONNECTIONS, D.I. PIPE, VALVES, VALVE BOXES, THRUST RESTRAINT, JOINT RESTRAINT, OFFSET FITTINGS, FLANGE PIPE/ADAPTORS, TAPS, ETC).
2. ALL PIPE, FITTINGS, AND APPURENANCES SHALL BE NEWLY FURNISHED BY THE CONTRACTOR UNLESS OTHERWISE NOTED.
3. ALL DISTURBANCES, INCLUDING LANDSCAPE AND PAVEMENT, ASSOCIATED WITH CONSTRUCTION SHALL BE RESTORED UNDER BID ITEM 90160 "INSTALL PRV - BEAR CLAW".
4. SEE THE SPECIAL PROVISIONS FOR MORE INFORMATION REGARDING THE CLA-VAL PRESSURE REDUCING VALVE.
5. MANHOLE SHALL BE WATER TIGHT.

PLOT SCALE: \_\_\_\_\_  
PLOT NAME: \_\_\_\_\_  
REV. DATE: \_\_\_\_\_

ORIGINATOR: CITY OF MADISON, STREETS DIVISION



PLOT SCALE: 1" = 30'

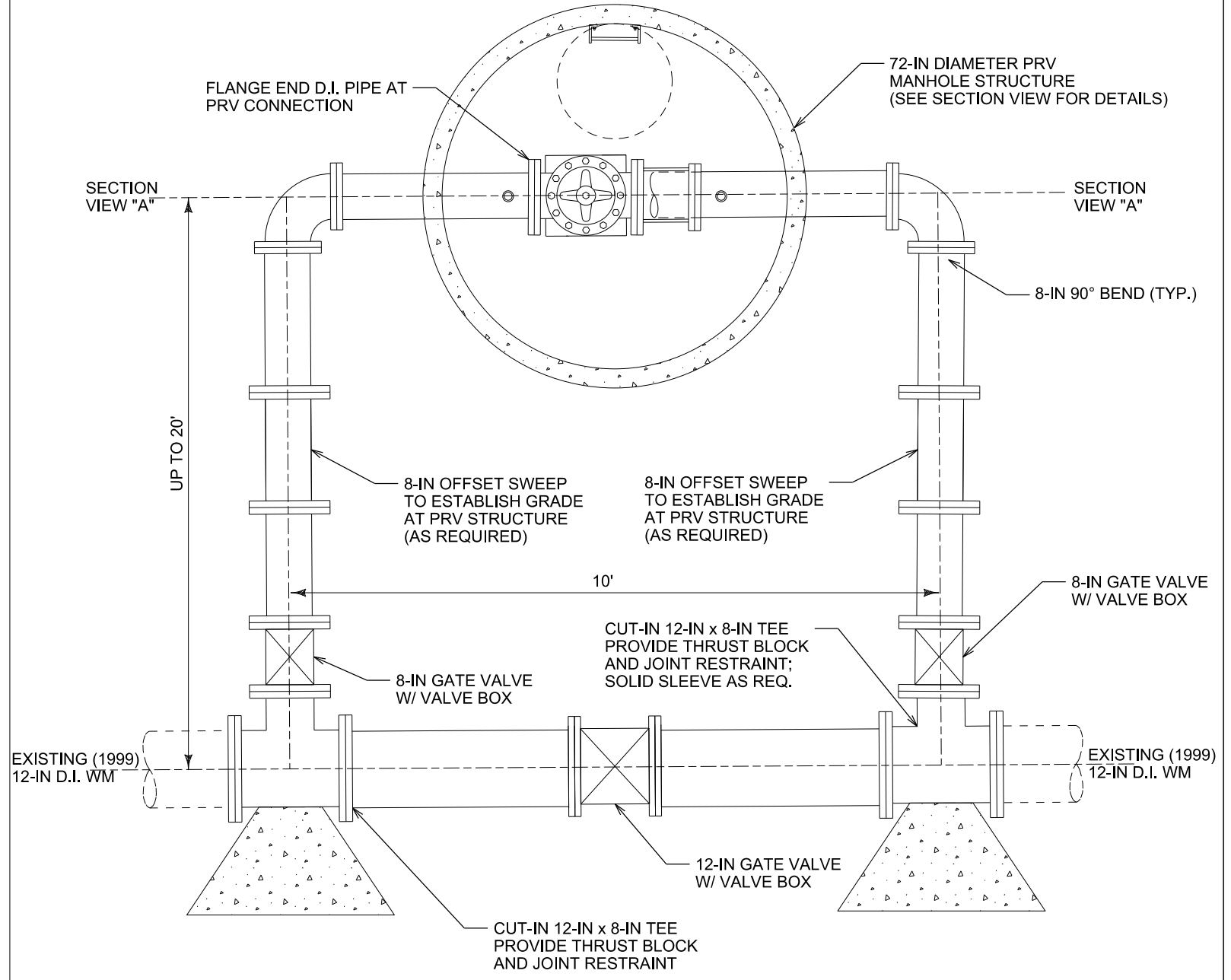
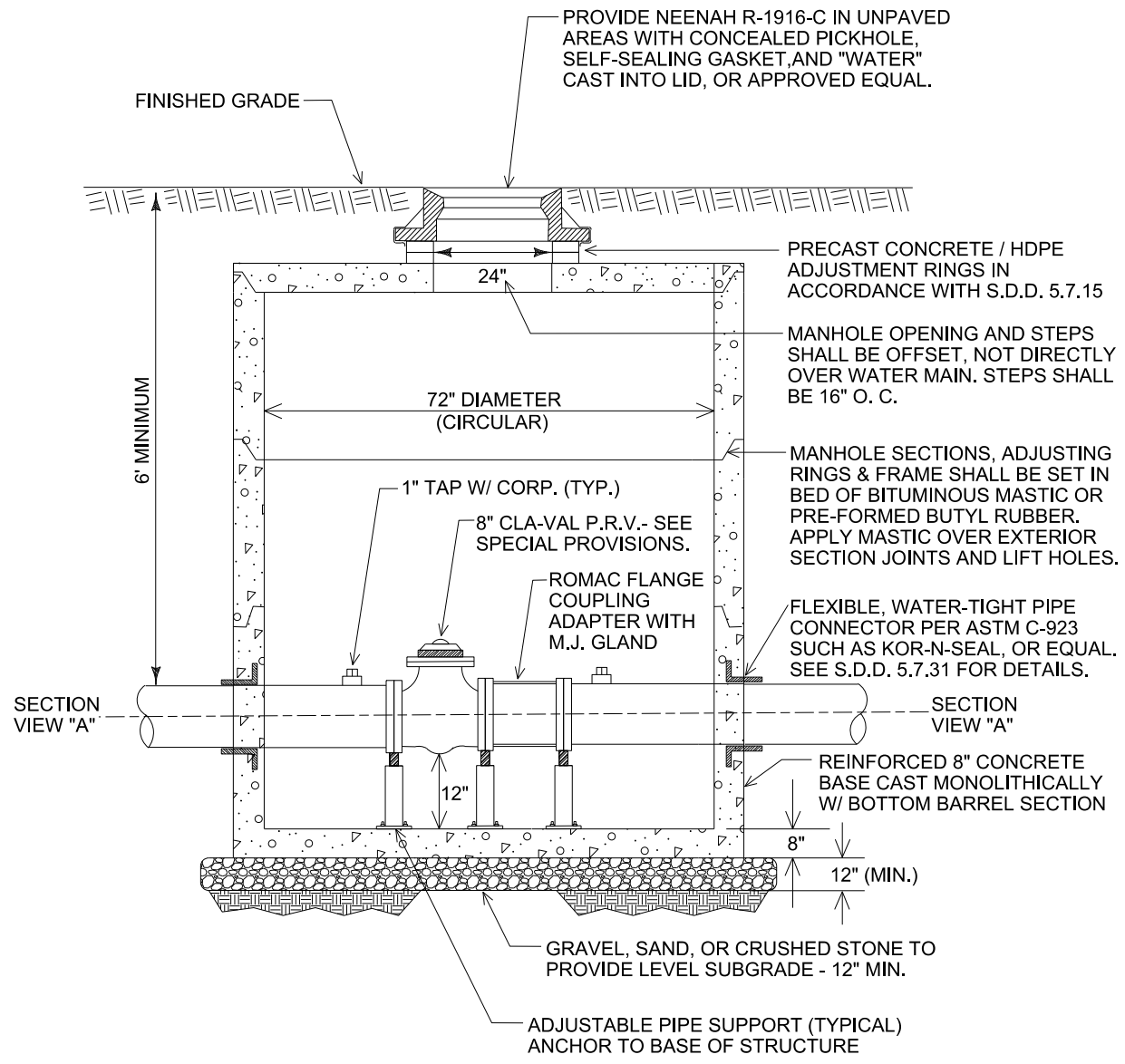
PLOT NAME: ---

REV. DATE: ---

ORIGINATOR: MADISON WATER UTILITY: Wupsh



**PRESSURE REDUCING VALVE MANHOLE  
(SECTION A-A - NTS)**



**PRESSURE REDUCING VALVE MANHOLE /  
STANDARD PIPING CONFIGURATION  
(PLAN VIEW - NTS)**

- NOTES:**
1. THE CONTRACT UNIT PRICE FOR THE LUMP SUM BID ITEM 90161 "INSTALL PRV - BPS 118" SHALL INCLUDE ALL COSTS OF FURNISHING AND PLACING THE LEVELING BASE AND STRUCTURE, AS SPECIFIED; AND ALSO ALL COSTS ASSOCIATED WITH CONSTRUCTION OF THE PIPING, AS SPECIFIED (CUT-IN CONNECTIONS, D.I. PIPE, VALVES, VALVE BOXES, THRUST RESTRAINT, JOINT RESTRAINT, OFFSET FITTINGS, FLANGE PIPE/ADAPTORS, TAPS, ETC).
  2. ALL PIPE, FITTINGS, AND APPURENANCES SHALL BE NEWLY FURNISHED BY THE CONTRACTOR UNLESS OTHERWISE NOTED.
  3. ALL DISTURBANCES, INCLUDING LANDSCAPE AND PAVEMENT, ASSOCIATED WITH CONSTRUCTION SHALL BE RESTORED UNDER BID ITEM 90161 "INSTALL PRV - BPS 128".
  4. SEE THE SPECIAL PROVISIONS FOR MORE INFORMATION REGARDING THE CLA-VAL PRESSURE REDUCING VALVE.
  5. SEE THE SPECIAL PROVISIONS FOR COORDINATION INFORMATION WHILE WORKING ON AND NEAR THE BIKE PATH AND WITHIN THE EASEMENT AREA SURROUNDING BPS 128.
  6. MANHOLE SHALL BE WATER TIGHT.

PLOT SCALE: \_\_\_\_\_

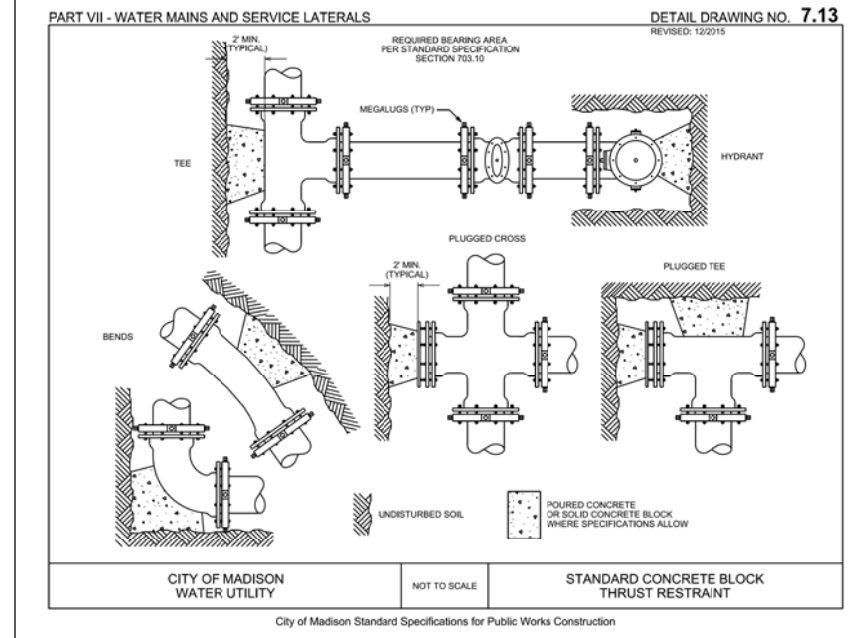
PLOT NAME: \_\_\_\_\_

REV. DATE: \_\_\_\_\_

ORIGINATOR: CITY OF MADISON, STREETS DIVISION

**CONSTRUCTION NOTES:**

- CONSTRUCT NEW WATER MAIN 6.0' BELOW FINISHED GRADE, UNLESS OTHERWISE NOTED. INSULATE MAIN WITH POLYSTYRENE BOARD AT UTILITY CROSSINGS OR OTHER AREAS IDENTIFIED BY ENGINEER AS HAVING INADEQUATE COVER.
  - VERIFY SIZE OF EXISTING WATER SERVICES AND RECONNECT SERVICES AS INDICATED.
  - MINIMIZE DISRUPTION OF SERVICE TO EXISTING CUSTOMERS. NOTIFY PER CONTRACT REQUIREMENTS OF ANY PLANNED WATER OUTAGE.
  - THE EXISTING UTILITIES SHOWN ON THIS PLAN REPRESENT THE BEST INFORMATION AVAILABLE TO THE WATER UTILITY AT THE TIME OF PLAN PREPARATION. CONTRACTOR IS RESPONSIBLE FOR HAVING EACH UTILITY LOCATED PRIOR TO COMMENCING WORK.
- WN1 REPLACE THE EXISTING LEAD SERVICE WITH A NEW COPPER SERVICE.
  - WN2 EXTEND AND RECONNECT THE EXISTING COPPER SERVICE FROM THE OLDER WATER MAIN TO THE NEWER WATER MAIN.
  - WN3 EXISTING SERVICE TO BE ABANDONED WHEN THE WATER MAIN IS CUT OFF; ABANDON CURB BOX AS REQUIRED.
  - WN4 DISCONNECT FROM THE OLDER WATER MAIN AND RECONNECT THE EXISTING COPPER WATER SERVICE LATERAL TO THE NEWER WATER MAIN.
  - WN5 RELOCATE THE EXISTING FIRE HYDRANT.
  - WN6 ABANDON WATER VALVE ACCESS STRUCTURE.
  - WN7 FURNISH AND INSTALL THE NEW TOP SECTION FOR THE WATER ACCESS STRUCTURE.
  - WN8 ABANDON THE VALVE BOX.
  - WN9 FURNISH THE DITCH, COMPACTION, AND ALL MATERIALS AND LABOR FOR THE INSTALLATION OF NEW SERVICE LATERAL.
  - WN10 REMOVE AND SALVAGE EXISTING HYDRANT
  - WN11 REPLACE THE EXISTING COPPER SERVICE WITH A COPPER SERVICE



**ESTIMATE OF PROJECT WATER MATERIALS:**

\* ESTIMATE OF MATERIALS IS FOR INFORMATION ONLY. ENGINEER DOES NOT GUARANTEE ACCURACY OF MATERIAL TAKE-OFF. ALWAYS REFER TO PLANS.

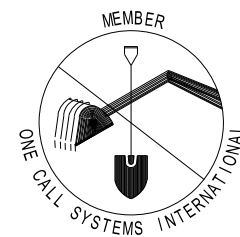
OLD SAUK PIPELINE		BEAR CLAW PRV	
WATER MAINS	TOTAL	WATER MAINS	TOTAL
6-IN PIPE (LF)	40	8-IN PIPE (LF)	50
12-IN PIPE (LF)	<10	POLY WRAP	45
16-IN PIPE (LF)	1500	8-IN VALVE & BOX	3
POLY WRAP	1750	8-IN PRV	1
6-IN VALVE & BOX	4	8-IN X ?-IN OFFSET*	2
12-IN VALVE & BOX	1	8-IN - 90° BEND	2
16-IN VALVE & BOX	3	8-IN SOLID SLEEVE	1
16-IN - 11.25° BEND	2	8-IN X 8-IN TEE	2
16-IN - 45° BEND	4		
16-IN X 12-IN REDUCER	1	BPS 128 PRV	
16-IN X 6-IN TEE	4	WATER MAINS	TOTAL
5-IN HYDRANT	4	8-IN PIPE (LF)	40
1.5-IN COPPER PIPING	AS REQ.	12-IN PIPE (LF)	10
		POLY WRAP	45
		8-IN VALVE & BOX	2
		12-IN VALVE & BOX	1
		8-IN PRV	1
		8-IN X ?-IN OFFSET*	2
		8-IN - 90° BEND	2
		12-IN X 8-IN TEE	2

\*AS NEEDED PER FIELD CONDITIONS;  
SEE DETAIL DRAWINGS

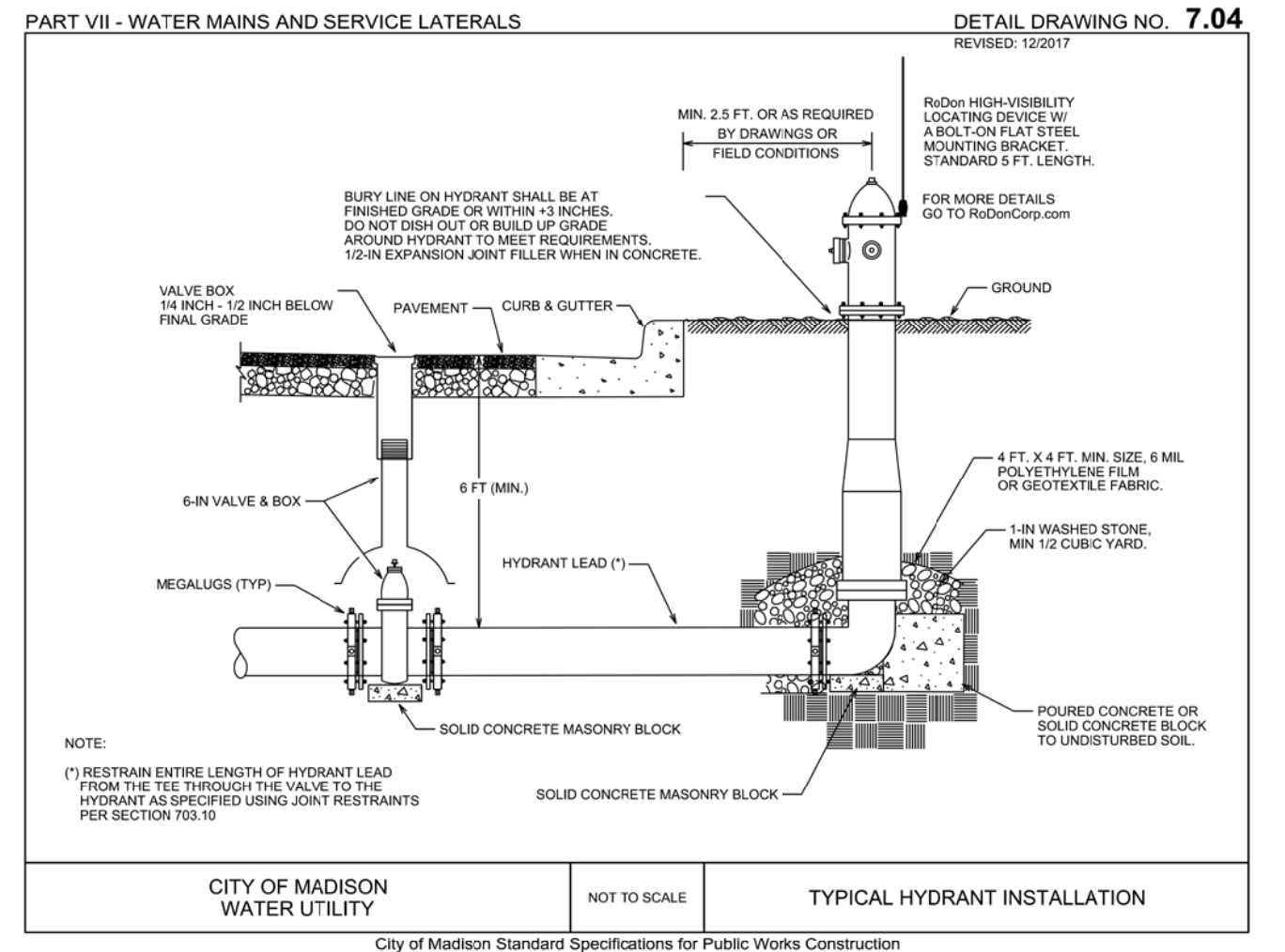
TO OBTAIN LOCATION OF PARTICIPANTS' UNDERGROUND FACILITIES BEFORE YOU DIG IN WISCONSIN

CALL DIGGERS HOTLINE  
TOLL FREE  
811 OR 1-800-242-8511  
FAX-A-LOCATE 1-800-338-3860  
TDD (FOR HEARING IMPAIRED) 1-800-542-2289

WIS. STATUTE 182.0175 (1974)  
REQUIRES MIN. OF 3 WORK DAYS  
NOTICE BEFORE YOU EXCAVATE.



**DISCLAIMER NOTE:**  
UTILITY LOCATIONS SHOWN ARE APPROXIMATE ONLY. IT SHALL BE THE CONTRACTOR'S RESPONSIBILITY TO DETERMINE THE EXACT HORIZONTAL AND VERTICAL LOCATION OF ALL EXISTING UNDERGROUND AND OVERHEAD UTILITIES PRIOR TO COMMENCING WORK.



NOTE:  
(\* ) RESTRAIN ENTIRE LENGTH OF HYDRANT LEAD FROM THE TEE THROUGH THE VALVE TO THE HYDRANT AS SPECIFIED USING JOINT RESTRAINTS PER SECTION 703.10