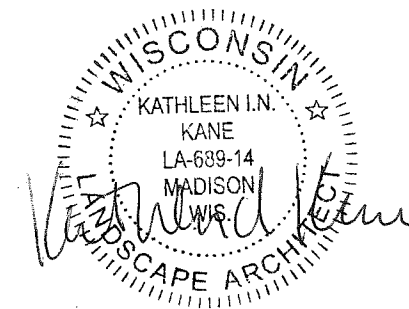


SHEET SCHEDULE

- 1 GOODMAN PARK BASKETBALL COURT LOCATION MAP
- 2 NAKOMA PARK TENNIS COURT LOCATION MAP
- 3 ODANA HILLS EAST PARK TENNIS COURTS LOCATION MAP
- 4 OLBRICH PARK TENNIS COURTS LOCATION MAP
- 5 RENNEBOHM PARK TENNIS COURTS LOCATION MAP
- 6 RICHMOND HILL PARK BASKETBALL COURT LOCATION MAP
- 7 WALNUT GROVE TENNIS COURTS LOCATION MAP
- 8 WESTHAVEN TRAILS PARK TENNIS COURTS LOCATION MAP



City of Madison
 Department of Public Works
PARKS DIVISION
 City-County Building, Suite 104
 210 Martin Luther King, Jr. Blvd.
 Madison, WI 53703

play
**MADISON
 PARKS**

**2018 TENNIS AND BASKETBALL COURT RESURFACINGS
 CONTRACT 8194**

MUNIS NOS.:

**17304-51-200; 17314-51-200; 17314-51-200-51000; 17396-51-200;
 17398-51-200; 17399-51-200**

GOODMAN PARK
 1402 WINGRA CREEK PKWY
 MADISON, WI 53715

RENNEBOHM PARK
 115 N EAU CLAIRE AVE
 MADISON, WI 53705

NAKOMA PARK
 3801 CHEROKEE DR
 MADISON, WI 53711

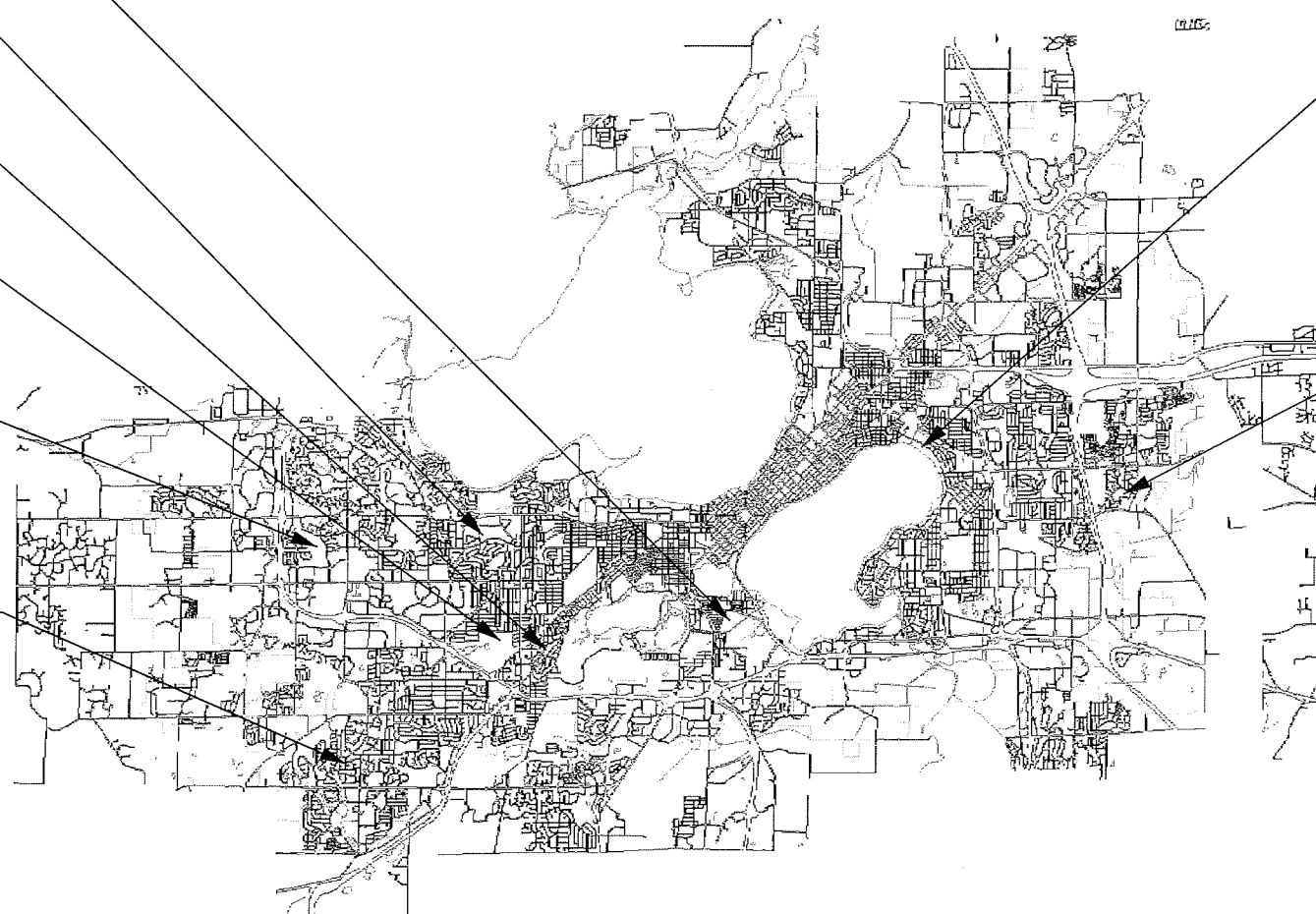
ODANA HILLS EAST PARK
 4627 ODANA ROAD
 MADISON, WI 53711

WALNUT GROVE PARK
 202 N WESTFIELD RD
 MADISON, WI 53717

WESTHAVEN TRAILS PARK
 3020 CIMARRON TRL
 MADISON, WI 53719

OLBRICH PARK
 3527 ATWOOD AVE
 MADISON, WI 53714

RICHMOND HILL PARK
 6117 COTTONTAIL TRAIL
 MADISON, WI 53718



PROJECT: *2018 TENNIS
 AND
 BASKETBALL
 COURT
 RESURFACINGS*

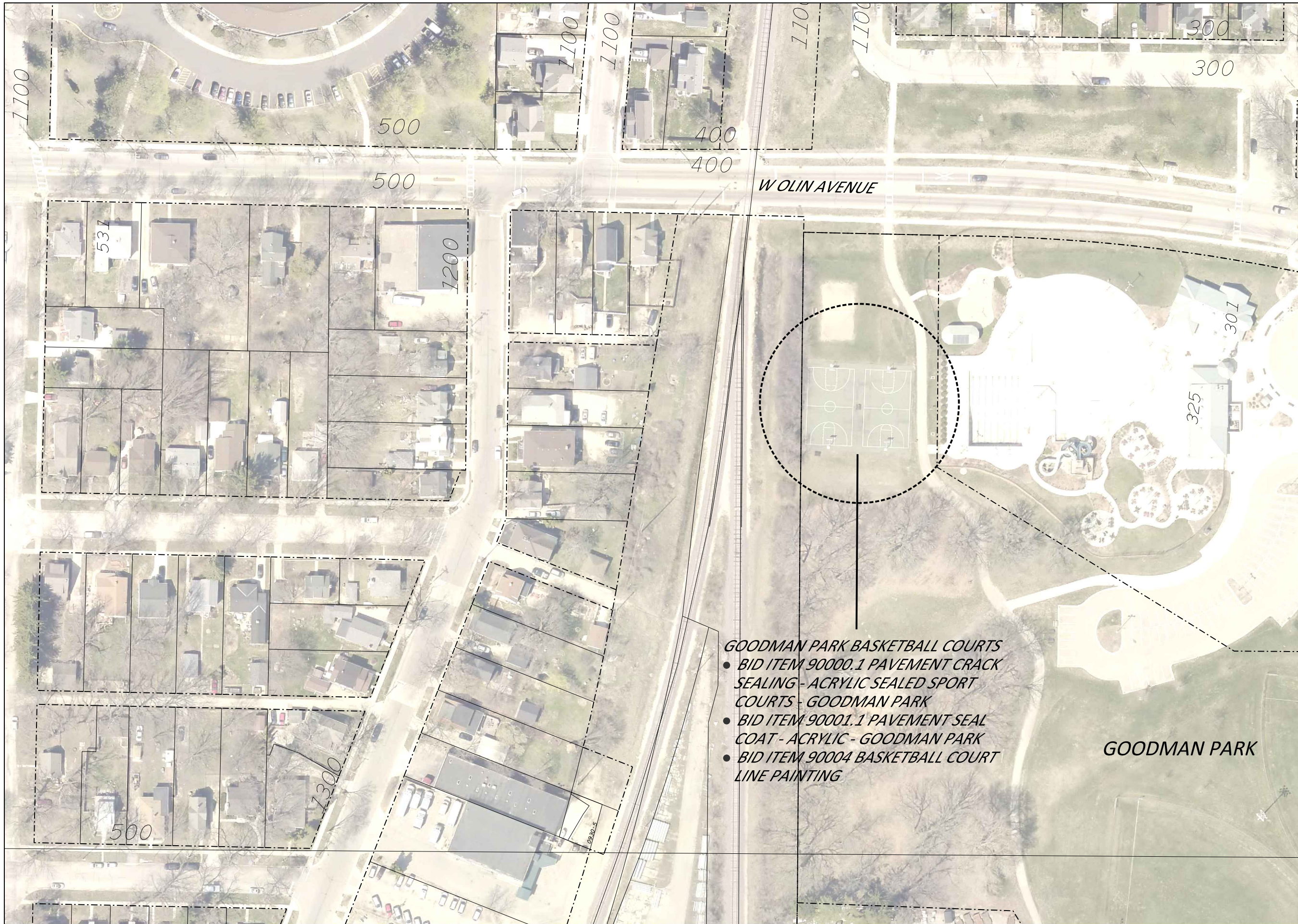
Although every effort has been made in preparing these plans and checking them for accuracy, the contractor and subcontractors must check all details and dimensions of their trade and be responsible for the same.

ITEM	DATE
Advised by: KK	05-03-2018

PUBLIC WORKS PROJECT #:
8194

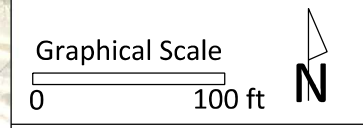
SHEET TITLE:
*CONTRACT SITE
 LOCATIONS*

COVER SHEET



City of Madison
 Department of Public Works
PARKS DIVISION
 City-County Building, Suite 104
 210 Martin Luther King, Jr. Blvd.
 Madison, WI 53703

play
**MADISON
 PARKS**



PROJECT: **2018 TENNIS
 AND
 BASKETBALL
 COURT
 RESURFACINGS**

GOODMAN PARK
 1402 WINGRA CREEK PKWY
 MADISON, WI 53715

Although every effort has been made in preparing these plans and checking them for accuracy, the contractor and subcontractors must check all details and dimensions of their trade and be responsible for the same.

ITEM	DATE
Advertised by: KK	05-03-2018

- GOODMAN PARK BASKETBALL COURTS**
- BID ITEM 90000.1 PAVEMENT CRACK SEALING - ACRYLIC SEALED SPORT COURTS - GOODMAN PARK
 - BID ITEM 90001.1 PAVEMENT SEAL COAT - ACRYLIC - GOODMAN PARK
 - BID ITEM 90004 BASKETBALL COURT LINE PAINTING

GOODMAN PARK

PUBLIC WORKS PROJECT #:
8194

SHEET TITLE:
LOCATION MAP

SHEET NUMBER:
1



NAKOMA PARK TENNIS COURT
 • BID ITEM 90002 TENNIS COURT LINE PAINTING (1 COURT)
 • BID ITEM 90005 PICKLEBALL COURT LINE PAINTING (1 COURT)

NAKOMA PARK

City of Madison
 Department of Public Works
PARKS DIVISION

City-County Building, Suite 104
 210 Martin Luther King, Jr. Blvd.
 Madison, WI 53703

play
MADISON
PARKS

Graphical Scale
 0 100 ft **N**

PROJECT: **2018 TENNIS AND BASKETBALL COURT RESURFACINGS**

NAKOMA PARK
3801 CHEROKEE DR
MADISON, WI
53711

Although every effort has been made in preparing these plans and checking them for accuracy, the contractor and subcontractors must check all details and dimensions of their trade and be responsible for the same.

ITEM	DATE
Advertised by: KK	05-03-2018

PUBLIC WORKS PROJECT #:
8194

SHEET TITLE:
LOCATION MAP

SHEET NUMBER:
2



ODANA ROAD

CHARLES LN

ODANA HILLS EAST PARK

- ODANA HILLS EAST PARK TENNIS COURTS**
- BID ITEM 90000.2 PAVEMENT CRACK SEALING - ACRYLIC SEALED SPORT COURTS - ODANA HILLS EAST PARK
 - BID ITEM 90001.2 PAVEMENT SEAL COAT - ACRYLIC - ODANA HILLS EAST PARK
 - BID ITEM 90002 TENNIS COURT LINE PAINTING (3 COURTS)
 - BID ITEM 90003 YOUTH TENNIS COURT LINE PAINTING (3 COURTS)

City of Madison
Department of Public Works
PARKS DIVISION

City-County Building, Suite 104
210 Martin Luther King, Jr. Blvd.
Madison, WI 53703

play
**MADISON
PARKS**

Graphical Scale

0 100 ft



PROJECT: **2018 TENNIS
AND
BASKETBALL
COURT
RESURFACINGS**

**ODANA HILLS EAST PARK
4627 ODANA ROAD
MADISON, WI 53711**

Although every effort has been made in preparing these plans and checking them for accuracy, the contractor and subcontractors must check all details and dimensions of their trade and be responsible for the same.

ITEM	DATE
Advised by: KK	05-03-2018

PUBLIC WORKS PROJECT #:
8194

SHEET TITLE:
LOCATION MAP

SHEET NUMBER:

3



OLBRICH TENNIS COURTS

- BID ITEM 90000.3 PAVEMENT CRACK SEALING - ACRYLIC SEALED SPORTS COURTS - OLBRICH PARK
- BID ITEM 90001.3 PAVEMENT SEAL COAT - ACRYLIC - OLBRICH PARK
- BID ITEM 90002 TENNIS COURT LINE PAINTING (2 COURTS)
- BID ITEM 90003 YOUTH TENNIS COURT LINE PAINTING (2 COURTS)

City of Madison
 Department of Public Works
PARKS DIVISION

City-County Building, Suite 104
 210 Martin Luther King, Jr. Blvd.
 Madison, WI 53703

play
**MADISON
 PARKS**

Graphical Scale

0 100 ft



PROJECT: **2018 TENNIS
 AND
 BASKETBALL
 COURT
 RESURFACINGS**

**OLBRICH PARK
 3527 ATWOOD AVE
 MADISON, WI 53714**

Although every effort has been made in preparing these plans and checking them for accuracy, the contractor and subcontractors must check all details and dimensions of their trade and be responsible for the same.

ITEM	DATE
Advertised by: KK	05-03-2018

PUBLIC WORKS PROJECT #:
8194

SHEET TITLE:
LOCATION MAP

SHEET NUMBER:

4



NEAU CLAIRE AVENUE

REGENT STREET

RENNEBOHM TENNIS COURTS
 • BID ITEM 90000.4 PAVEMENT CRACK SEALING -
 ACRYLIC SEALED SPORTS COURTS - RENNEBOHM
 PARK

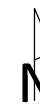
City of Madison
 Department of Public Works
PARKS DIVISION

City-County Building, Suite 104
 210 Martin Luther King, Jr. Blvd.
 Madison, WI 53703

play
**MADISON
 PARKS**

Graphical Scale

0 100 ft



PROJECT: *2018 TENNIS
 AND
 BASKETBALL
 COURT
 RESURFACINGS*

*RENNEBOHM PARK
 115 N EAU CLAIRE AVE
 MADISON, WI 53705*

Although every effort has been made in preparing these plans and checking them for accuracy, the contractor and subcontractors must check all details and dimensions of their trade and be responsible for the same.

ITEM	DATE
Advertised by: KK	05-03-2018

PUBLIC WORKS PROJECT #:
8194

SHEET TITLE:
LOCATION MAP

SHEET NUMBER:

5



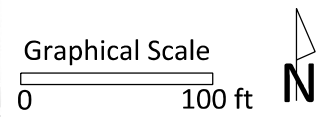
RICHMOND HILL PARK BASKETBALL COURT
 • BID ITEM 90004 BASKETBALL COURT LINE PAINTING

RICHMOND HILL PARK

City of Madison
 Department of Public Works
PARKS DIVISION

*City-County Building, Suite 104
 210 Martin Luther King, Jr. Blvd.
 Madison, WI 53703*

play
MADISON PARKS



PROJECT: *2018 TENNIS AND BASKETBALL COURT RESURFACINGS*

*RICHMOND HILL PARK
 6117 COTTONTAIL TRL
 MADISON, WI 53718*

Although every effort has been made in preparing these plans and checking them for accuracy, the contractor and subcontractors must check all details and dimensions of their trade and be responsible for the same.

ITEM	DATE
Advertised by: KK	05-03-2018

PUBLIC WORKS PROJECT #:
8194

SHEET TITLE:
LOCATION MAP

SHEET NUMBER:
6



812A-883A

812A-883A

N WESTFIELD ROAD

WALNUT GROVE PARK TENNIS COURTS

- BID ITEM 90000.5 ACRYLIC SEALED SPORTS COURTS - WALNUT GROVE PARK
- BID ITEM 90001.4 PAVEMENT SEAL COAT - ACRYLIC - WALNUT GROVE PARK
- BID ITEM 90002 TENNIS COURT LINE PAINTING (2 COURTS)
- BID ITEM 90005 PICKLEBALL COURT LINE PAINTING (2 COURTS)

City of Madison
 Department of Public Works
PARKS DIVISION

City-County Building, Suite 104
 210 Martin Luther King, Jr. Blvd.
 Madison, WI 53703

play
MADISON
PARKS

Graphical Scale

0 100 ft



PROJECT: **2018 TENNIS
 AND
 BASKETBALL
 COURT
 RESURFACINGS**

**WALNUT GROVE PARK
 202 N WESTFIELD RD
 MADISON, WI 53717**

Although every effort has been made in preparing these plans and checking them for accuracy, the contractor and subcontractors must check all details and dimensions of their trade and be responsible for the same.

ITEM	DATE
Advised by: KK	05-03-2018

PUBLIC WORKS PROJECT #:
8194

SHEET TITLE:
LOCATION MAP

SHEET NUMBER:

7

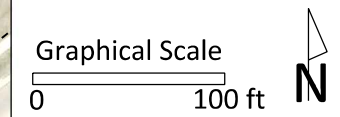


- WESTHAVEN TRAILS TENNIS COURTS**
- BID ITEM 90000.6 PAVEMENT CRACK SEALING - ACRYLIC SEALED SPORT COURTS - WESTHAVEN TRAILS PARK
 - BID ITEM 90001.5 PAVEMENT SEAL COAT - ACRYLIC - WESTHAVEN TRAILS PARK
 - BID ITEM 90002 TENNIS COURT LINE PAINTING (2 COURTS)
 - BID ITEM 90005 PICKLEBALL COURT LINE PAINTING (2 COURTS)

City of Madison
 Department of Public Works
PARKS DIVISION

City-County Building, Suite 104
 210 Martin Luther King, Jr. Blvd.
 Madison, WI 53703

play
MADISON
PARKS



PROJECT: **2018 TENNIS AND BASKETBALL COURT RESURFACINGS**

WESTHAVEN TRAILS PARK
 3020 CIMARRON TRL
 MADISON, WI 53719

Although every effort has been made in preparing these plans and checking them for accuracy, the contractor and subcontractors must check all details and dimensions of their trade and be responsible for the same.

ITEM	DATE
Advised by: KK	05-03-2018

PUBLIC WORKS PROJECT #:
8194

SHEET TITLE:
LOCATION MAP

SHEET NUMBER:

8