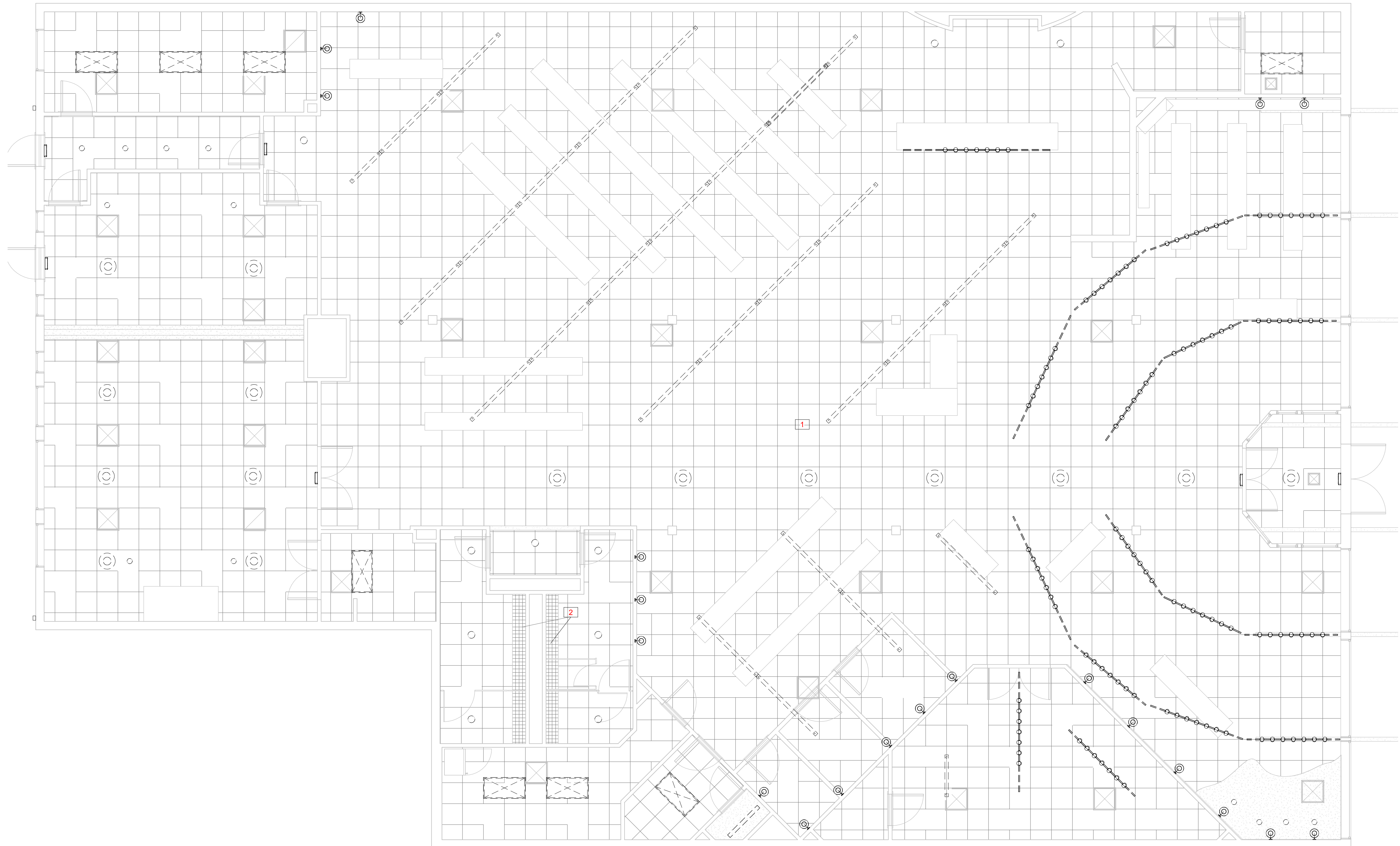




**Revisions**

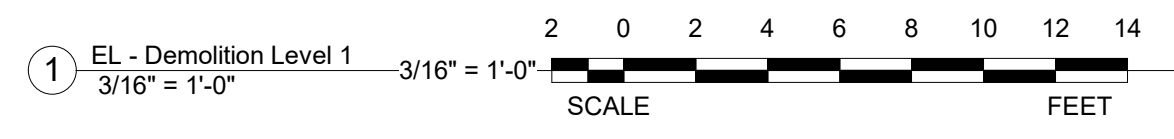
No.	Description




- 1. Demolish all lighting fixtures and controls. Not all existing items may be shown. All XTG lighting fixtures and controls that are not required for the final lighting function shall be removed.
- 2. Remove all unused raceways, boxes, conduit and wiring
- 3. Where removal of light fixture or control leaves an opening in wall or ceiling, the opening shall be repaired. Boxes shall receive a cover colored to match surrounding. Holes shall be patched with like material, color and texture.

**Keynote Legend**

Key Value	Keynote Text
1	Remove all shelf-mounted light fixtures in entire area.
2	Remove light fixtures. Keep light grate in place.



Project North



**Demolition**

**EL 200**

Print Date:  
 3/5/2021 8:56:03 AM



