



Madison, Wisconsin

CITY OF MADISON

CITY ENGINEERING DIVISION

DEPARTMENT OF PUBLIC WORKS

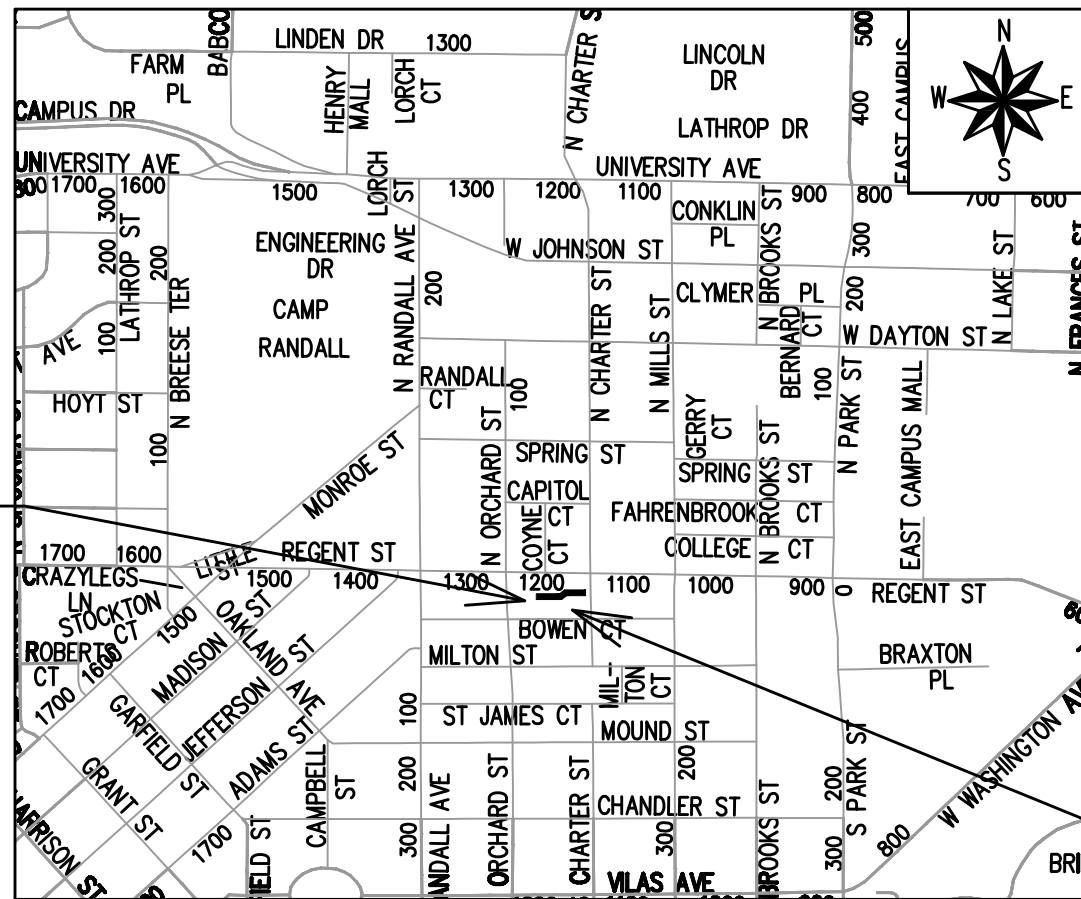
PLAN OF PROPOSED IMPROVEMENT

INDEX OF SHEETS

SHEET NO. D1	TYPICAL SECTIONS
SHEET NO. EC1	EROSION CONTROL PLANS
SHEET NO. P1	STREET PLAN & PROFILES
SHEET NO. U1	UTILITY PLAN & PROFILES
SHEET NO. U2	STORM SEWER SCHEDULE
SHEET NO. X1-X2	CROSS SECTIONS

SOUTH CHARTER STREET ALLEY ASSESSMENT DISTRICT - 2026

CITY PROJECT NO. 15486
CONTRACT NO. 8809



PROJECT
LOCATION

EARTH WORK SUMMARY:

EXCAVATION CUT (MEASURED PLAN QUANTITY) = 130 C.Y.
ESTIMATED UNDISTRIBUTED UNDERCUT = 70 C.Y.
TOTAL UNCLASSIFIED EXCAVATION CUT = 200 C.Y.

SEE 1235 REGENT STREET
PRIVATE DEVELOPMENT
PROJECT FOR ADJACENT
ALLEY IMPROVEMENTS
PROJECT NO. 14945
CONTRACT NO. 9391

CONVENTIONAL SIGNS	
FIELD VERIFY ALL UTILITY LOCATIONS	
GAS	— G —
STORM SEWER	— ST —
SANITARY SEWER	— SN —
WATER	— W —
BURIED ELECTRIC	— E —
OVERHEAD ELECTRIC	— OH —
POWER POLE	□
ADA COMPLIANT RAMP W/ DETECTABLE WARNING FIELD	▣
COMBUSTIBLE FLUIDS	☀

NOTES:

- ALL GUTTERS SHALL DRAIN WITH A MINIMUM GRADE OF 0.50% TOWARD STORM SEWER INLETS.
- SIDEWALK RAMPS SHALL HAVE A MAXIMUM SLOPE OF 1" PER 12". SIDEWALK AND CURB RAMPS SHALL BE CONSTRUCTED WITH A SIDE SLOPE OF 2.00%. SIDEWALK SHALL HAVE A MINIMUM LONGITUDINAL SLOPE OF 0.50% AND A MAXIMUM LONGITUDINAL SLOPE OF 5.00% EXCEPT WHERE STREET GRADES EXCEED 5.00%.
- CITY MAINTENANCE PLAN NOT REQUIRED

PUBLIC IMPROVEMENT PROJECT
APPROVED

APPROVED DATE
JANUARY 13, 2026

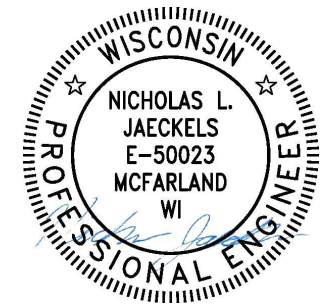
BY THE COMMON COUNCIL
OF MADISON, WISCONSIN

PUBLIC IMPROVEMENT DESIGN
APPROVED BY:

Chris Potykowski 01/30/2026

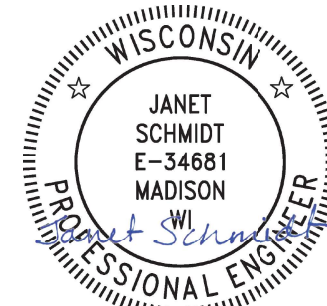
City Engineer Date

STREET
DESIGNED BY:



01/30/2026

STORM SEWER
DESIGNED BY:



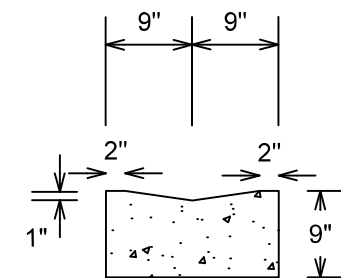
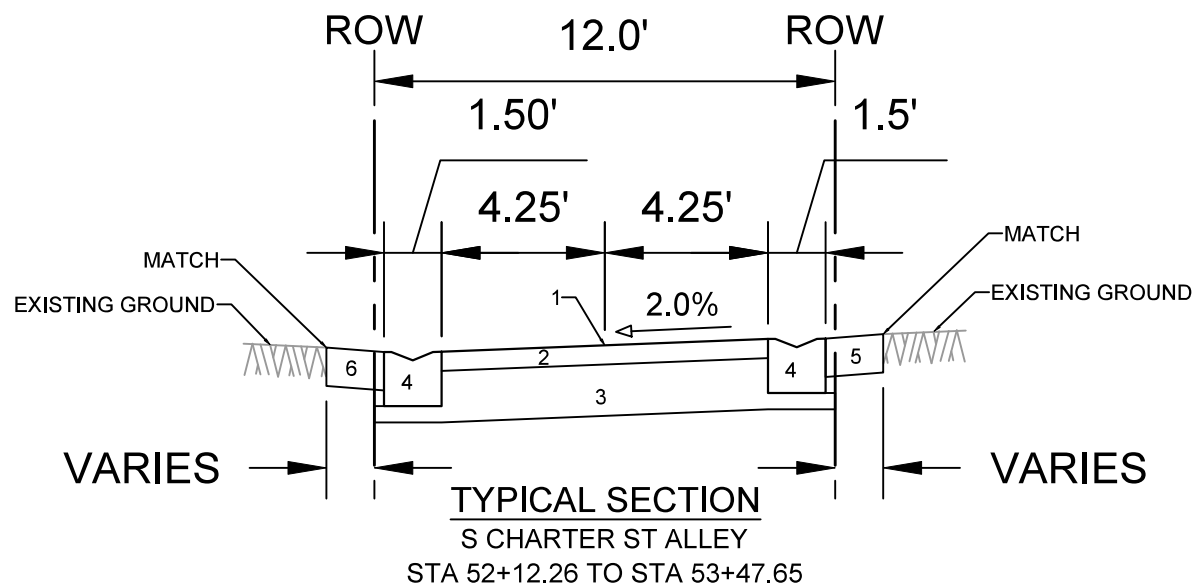
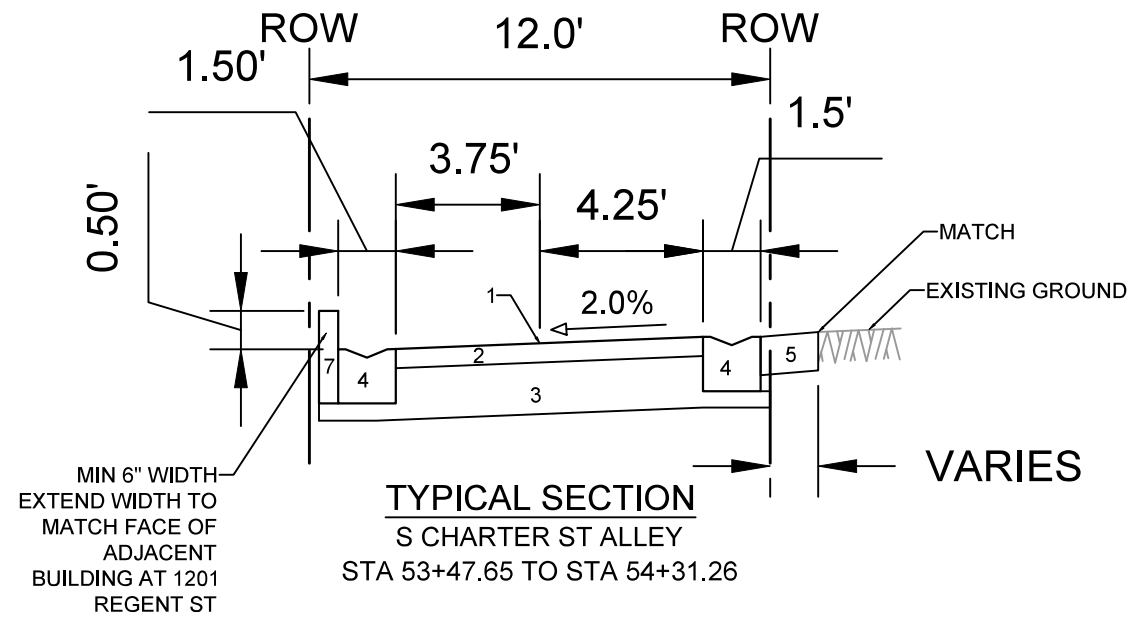
01/30/2026

PLOT SCALE: 1 IN.=1 FT., XREF

PLOT NAME: ---

REV. DATE: 1/27/2026 8:56 AM

ORIGINATOR: CITY_OF_MADISON



- 1 POINT REFERRED TO ON PROFILE
- 2 3.0" H.M.A. PAVEMENT- TYPE 4 LT 58-28 S
- 3 10" CRUSHED AGGREGATE BASE COURSE GRADATION 2
- 4 ALLEY GUTTER, SEE DETAIL
- 5 6" CRUSHED AGGREGATE BASE COURSE GRADATION 3
- 6 3" ASPHALT TERRACE PAVEMENT
- 7 SIDEWALK CURB

SPECIAL NOTES:

* SEE X-SHEETS FOR CROSS SLOPES AND DIMENSIONS.

MARK	REVISION	DATE	BY
15486	1/29/2026	10:36 AM	Scale: #####
Designed By: NLJ			D-1

15486
MADISON, WI
8809
CONTRACT NO:


TYPICAL SECTIONS
SOUTH CHARTER STREET ALLEY
M:\DESIGN\Projects\15486\CAD\Streets\15486EN-Details.dwg





15486
D-1

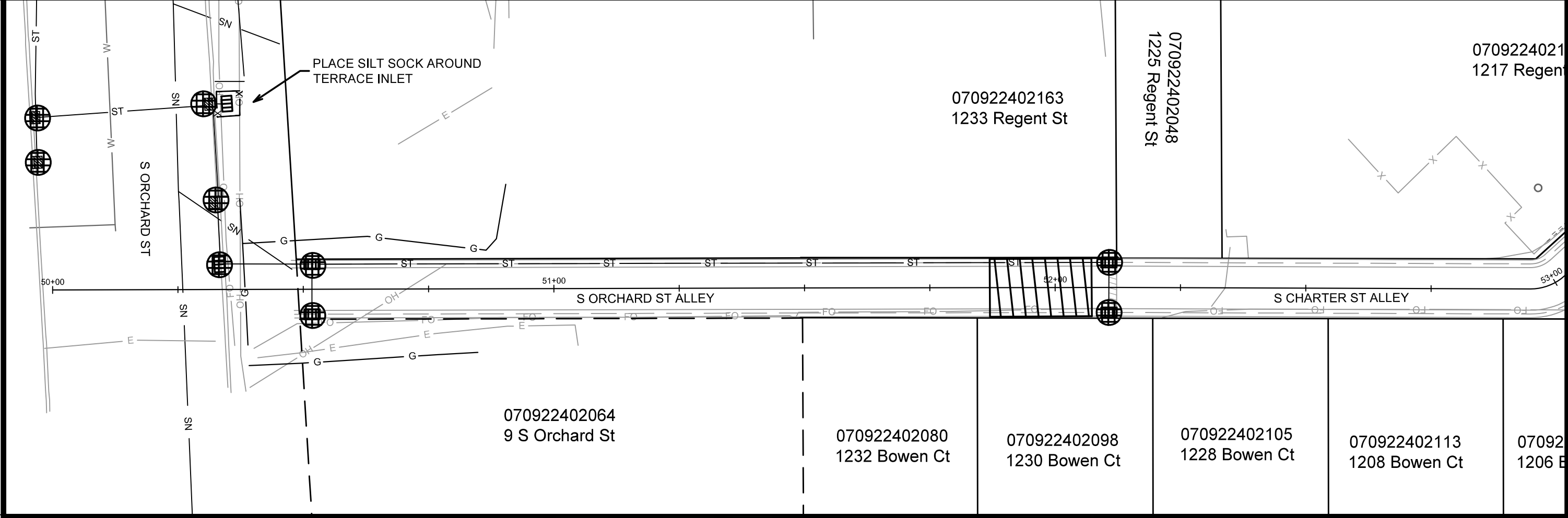
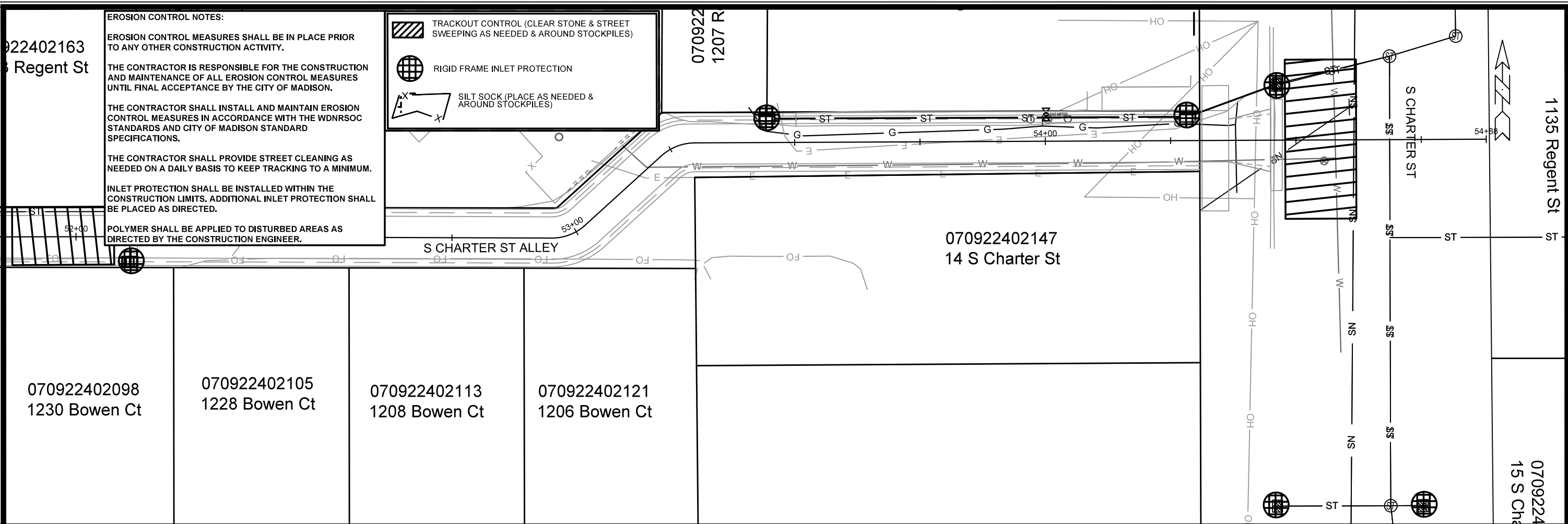
022402163
Regent St

EROSION CONTROL NOTES:
 EROSION CONTROL MEASURES SHALL BE IN PLACE PRIOR TO ANY OTHER CONSTRUCTION ACTIVITY.
 THE CONTRACTOR IS RESPONSIBLE FOR THE CONSTRUCTION AND MAINTENANCE OF ALL EROSION CONTROL MEASURES UNTIL FINAL ACCEPTANCE BY THE CITY OF MADISON.
 THE CONTRACTOR SHALL INSTALL AND MAINTAIN EROSION CONTROL MEASURES IN ACCORDANCE WITH THE WDNR SOC STANDARDS AND CITY OF MADISON STANDARD SPECIFICATIONS.
 THE CONTRACTOR SHALL PROVIDE STREET CLEANING AS NEEDED ON A DAILY BASIS TO KEEP TRACKING TO A MINIMUM.
 INLET PROTECTION SHALL BE INSTALLED WITHIN THE CONSTRUCTION LIMITS. ADDITIONAL INLET PROTECTION SHALL BE PLACED AS DIRECTED.
 POLYMER SHALL BE APPLIED TO DISTURBED AREAS AS DIRECTED BY THE CONSTRUCTION ENGINEER.

 TRACKOUT CONTROL (CLEAR STONE & STREET SWEEPING AS NEEDED & AROUND STOCKPILES)

 RIGID FRAME INLET PROTECTION

 SILT SOCK (PLACE AS NEEDED & AROUND STOCKPILES)



070922402098 1230 Bowen Ct
 070922402105 1228 Bowen Ct
 070922402113 1208 Bowen Ct
 070922402121 1206 Bowen Ct

070922402147
14 S Charter St

070922402163
1233 Regent St

070922402048
1225 Regent St

070922402121
1217 Regent St

070922402064
9 S Orchard St

070922402080
1232 Bowen Ct

070922402098
1230 Bowen Ct

070922402105
1228 Bowen Ct

070922402113
1208 Bowen Ct

070922402121
1206 Bowen Ct

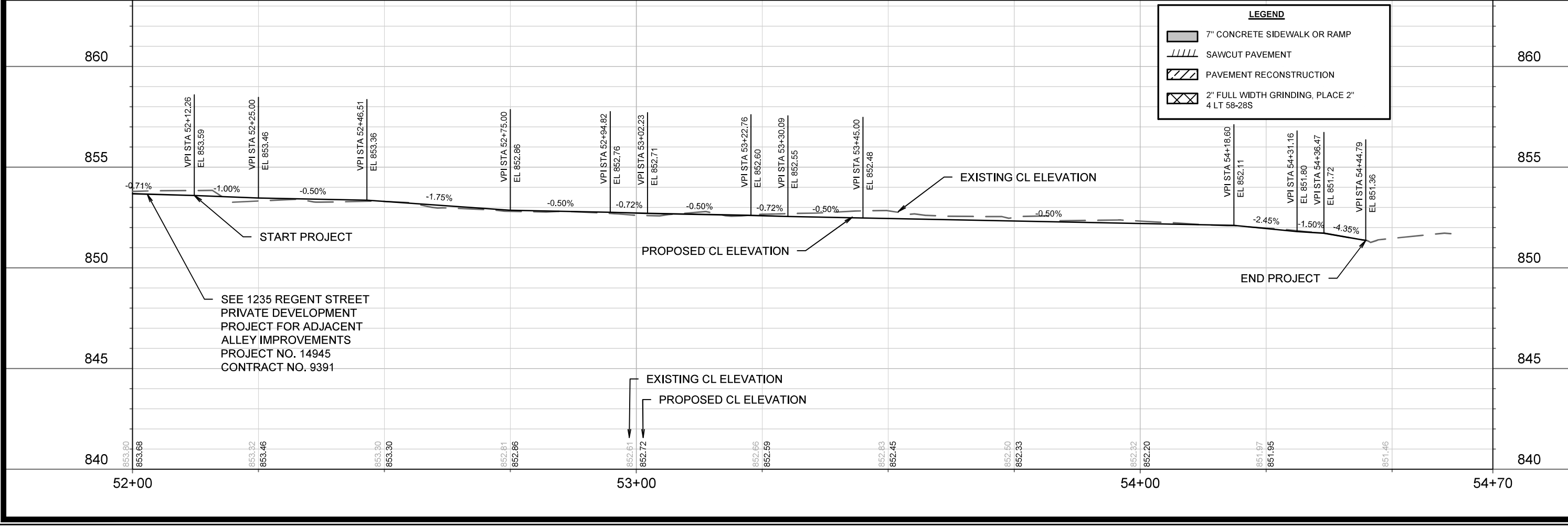
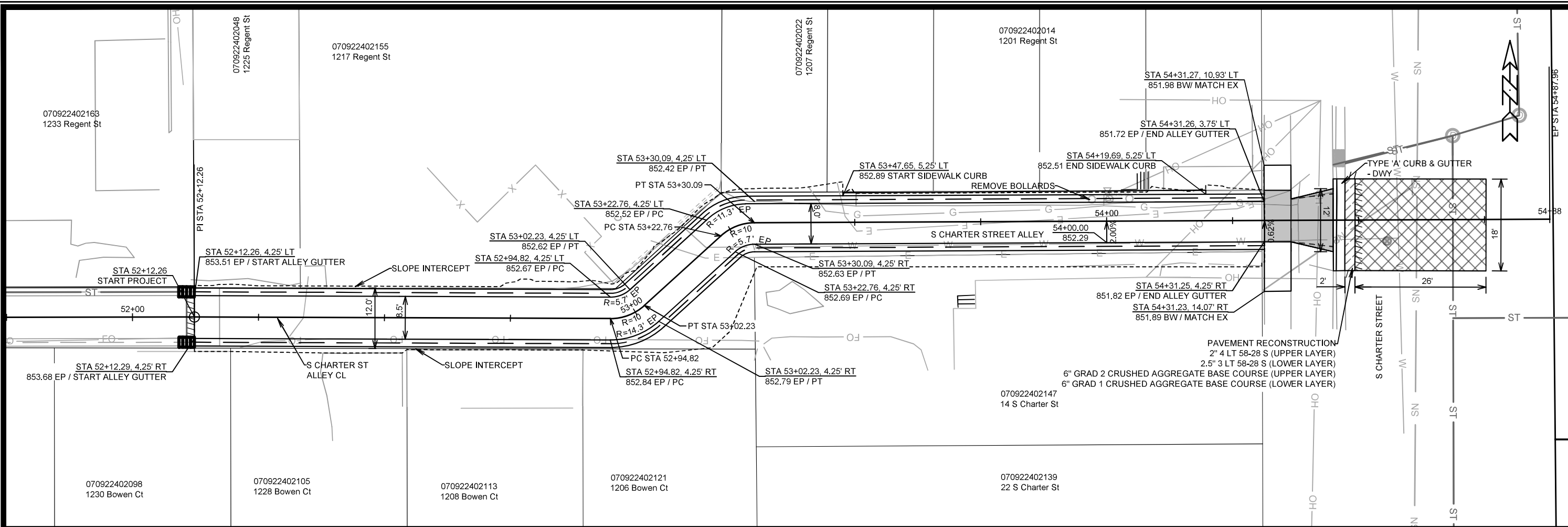
MARK	REVISION	DATE	BY

15486
MADISON, WI
8809
CONTRACT NO:

EROSION CONTROL PLAN - SOUTH CHARTER STREET ALLEY
 SOUTH CHARTER STREET ALLEY


 15486
 EC-1

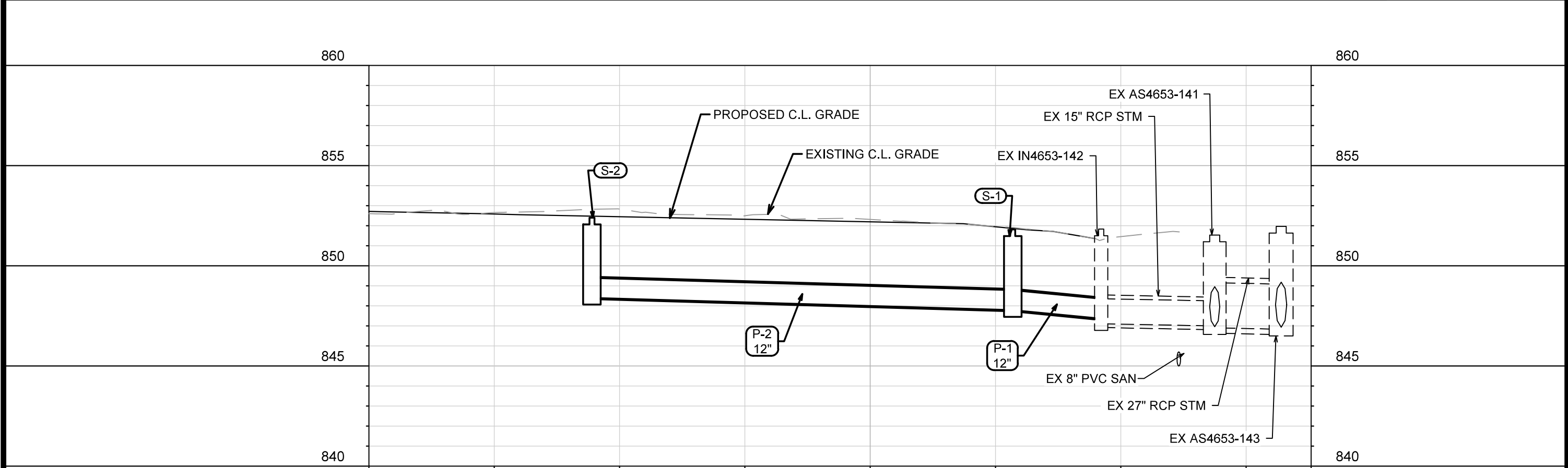
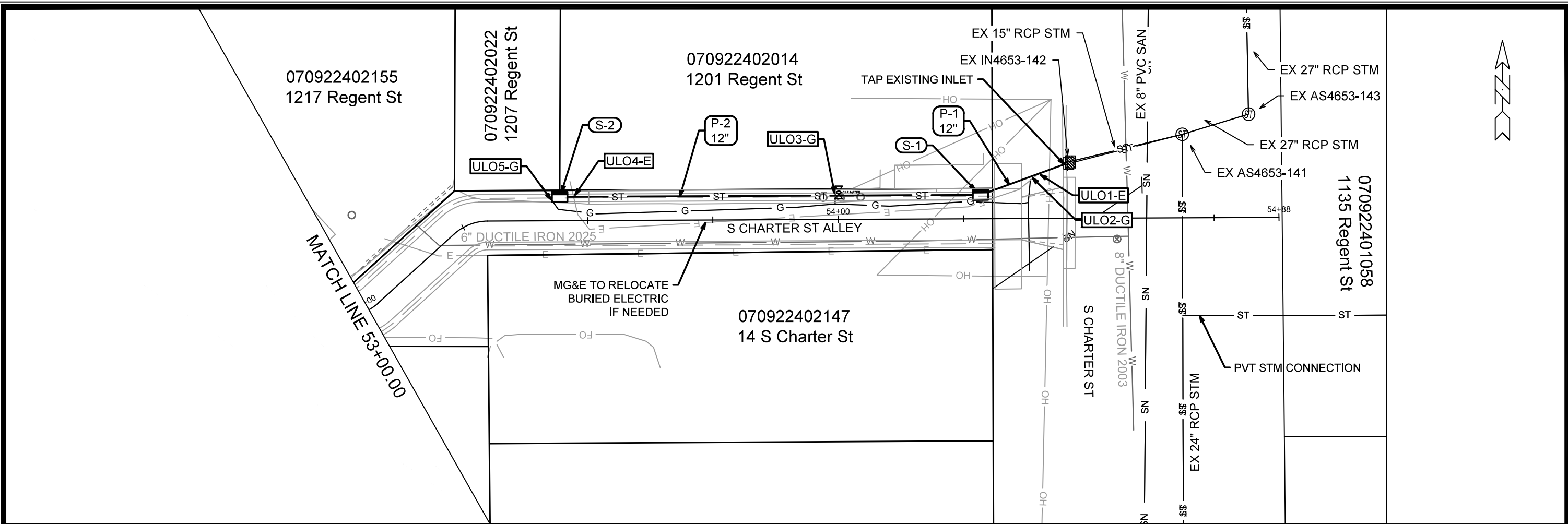
M:\DESIGN\Projects\15486\CAD\sewers\15486SWR-PipeNetwork.dwg



LEGEND

- 7" CONCRETE SIDEWALK OR RAMP
- SAWCUT PAVEMENT
- PAVEMENT RECONSTRUCTION
- 2" FULL WIDTH GRINDING, PLACE 2" 4 LT 58-28S

15486	MADISON, WI	8809	CONTRACT NO:
PLAN & PROFILE - SOUTH CHARTER STREET ALLEY SOUTH CHARTER STREET ALLEY			
M:\DESIGN\Projects\15486\CAD\Streets\15486EN-PnP.dwg			
15486			
P-1			



MARK	REVISION	DATE	BY

15486
 MADISON, WI
 8800
 CONTRACT NO:

UTILITY PLAN & PROFILE - SOUTH CHARTER STREET ALLEY
 SOUTH CHARTER STREET ALLEY
 M:\DESIGN\Projects\15486\CAD\sewers\15486SWR-PipeNetwork.dwg



15486
 U-1

STORM SEWER SCHEDULE

SOUTH CHARTER STREET ALLEY

PROJECT NO. 15468

SHEET NO.

U-2

STORM SEWER SCHEDULE

CITY OF MADISON

PROPOSED STORM STRUCTURES

STRUC. NO.	STATION	LOCATION (OFFSET)	TYPE	TOP OF CASTING	E.I.	DEPTH	NOTES
S CHARTER ST ALLEY							
S-1	54+28.44	LT-4.75	H INLET	851.79	847.79	4.00	W/R-3362-L; PER SDD 5.7.33; [2]
S-2	53+44.48	LT-4.75	H INLET	852.41	848.40	4.01	W/R-3362-L; PER SDD 5.7.33; [2]

PROPOSED STORM PIPES

PIPE NO.	FROM (DNSTM)	TO (UPSTM)	DISCH. E.I.	INLET E.I.	PLAN (PAY) LGTH (FT)	PIPE LGTH (FT)	SLOPE (%)	PIPE SIZE	TYPE	NOTES
S CHARTER ST ALLEY										
P-1	IN4653-142	S-1	847.36	847.79	19	16	2.69%	12"	C-900	[1]
P-2	S-1	S-2	847.79	848.40	84	81	0.75%	12"	C-900	

NOTE: PLAN LENGTH (PAY LENGTH) IS FROM CENTER OF STRUCTURE TO CENTER OF STRUCTURE. PIPE LENGTH IS ACTUAL LENGTH OF PIPE FROM STRUCTURE WALL TO STRUCTURE WALL. SLOPE CALCULATED USING

STORM SEWER ULOs

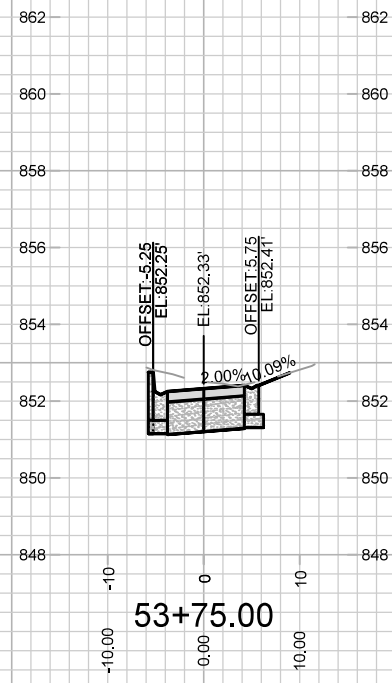
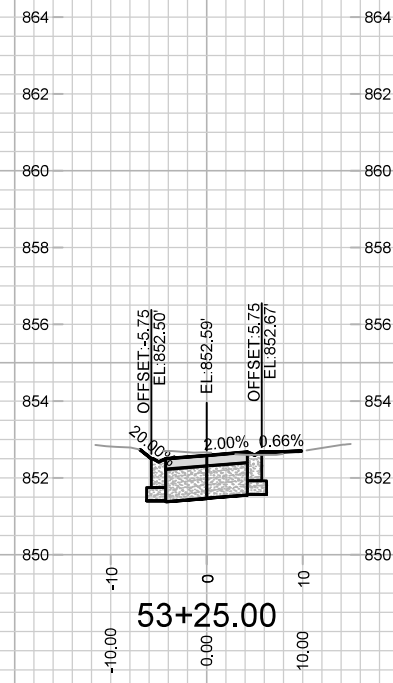
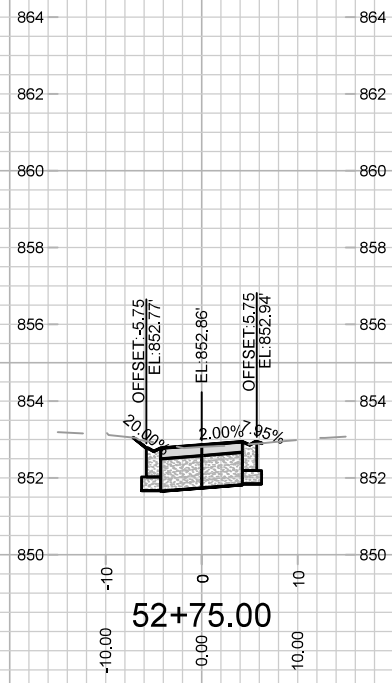
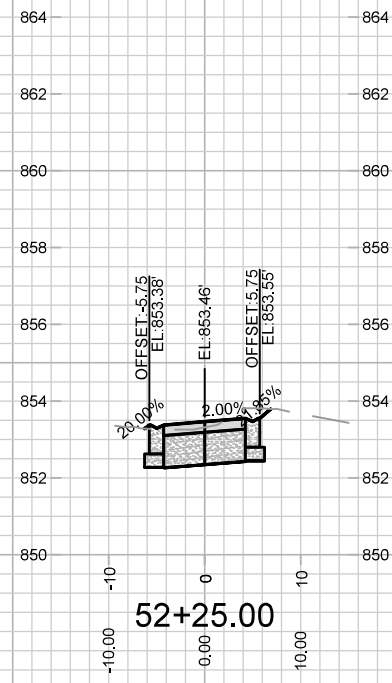
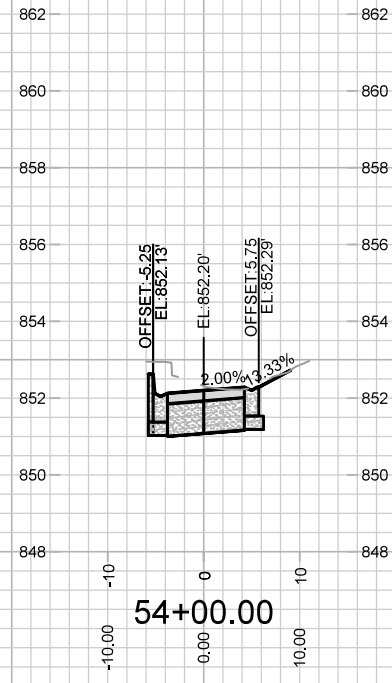
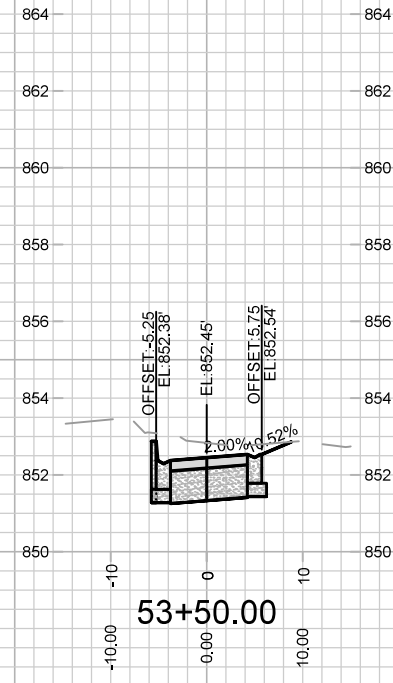
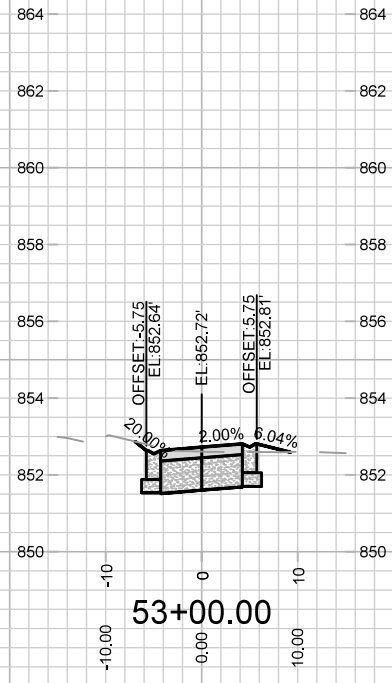
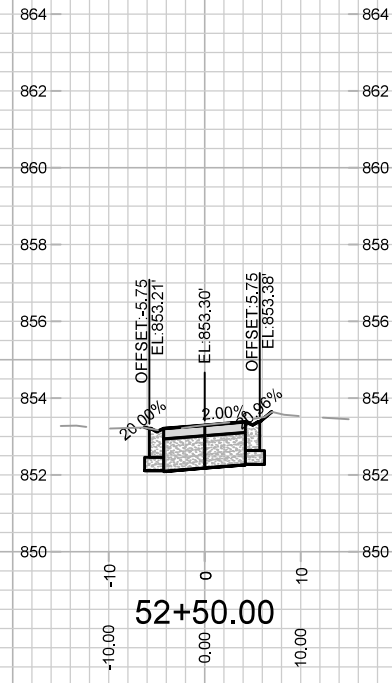
ULO NO.	STATION	LOCATION (OFFSET)	TYPE	TOP ELEV.	BOTTOM ELEV.	NOTES
S CHARTER ST ALLEY						
ULO1-E	54+40.04	LT-8.91	BURIED ELECTRIC			[3]
ULO2-G	54+38.48	LT-8.37	GAS MAIN			
ULO3-G	53+99.48	LT-4.75	GAS SERVICE			
ULO4-E	53+47.25	LT-4.75	BURIED ELECTRIC			[3]
ULO5-G	53+43.05	LT-3.89	GAS SERVICE			

SPECIFIC NOTES

- [1] TAP EXISTING INLET AND MATCH CROWN OF EXISTING PIPE
- [2] STA / OFF TO CENTER OF STRUCTURE; TC IS EDGE OF PAVEMENT
- [3] BURIED ELECTRIC TO BE RELOCATED BY OWNER IF IT IS IN CONFLICT WITH PROPOSED STORM SEWER

STANDARD NOTES:

- ABBREVIATIONS: AE = APRON ENDWALL; RCP = REINFORCED CONCRETE PIPE; HERCP = HORIZONTAL ELLIPTICAL REINFORCED CONCRETE PIPE; DNA = DOES NOT APPLY; SAS = SEWER ACCESS STRUCTURE; LP = LOW POINT INLET STRUCTURE; FP = FIELD POURED STRUCTURE; TR = TOP OF CONCRETE ROOF; NCM = NO CROWN MATCH FOR PIPES; UD = UNDERDRAIN
- TOP OF CASTING GRADE GIVEN IS THE TOP OF CURB FOR INLET STRUCTURES AND THE FLOWLINE OF THE CLOSED CASTING FOR SASs.
- TOP OF CONCRETE ROOF (TR) IS 1.25 BELOW TOP OF CASTING UNLESS OTHERWISE NOTED.
- ALL REINFORCED CONCRETE PIPES TO BE CLASS III UNLESS OTHERWISE NOTED.
- SURVEYOR TO CONFIRM THAT ALL INLET STATION / OFFSETS LINE UP WITH PROPOSED CURB AND GUTTER.
- ALL REBAR FOR FIELD POUR STRUCTURES SHALL BE EPOXY COATED. ANY EXPOSED STEEL SHALL BE TOUCHED UP OR
- ALL FIELD POURED SAS STORM STRUCTURES SHALL BE CONSTRUCTED IN ACCORDANCE WITH STANDARD DETAIL DRAWING 5.7.3.
- ALL PRECAST SAS STORM STRUCTURES SHALL BE CONSTRUCTED IN ACCORDANCE WITH STANDARD DETAIL DRAWING 5.7.5.
- ALL STRUCTURES CALLED OUT AS FIELD POURED SHALL BE FIELD POURED. ALL OTHER STRUCTURES (NOT INDICATED AS FIELD POURED) SHALL BE SUBMITTED TO CITY ENGINEERING FOR APPROVAL IF PRECAST STRUCTURES ARE PREFERRED. CONTACT ERIN GETER OF CITY ENGINEERING AT (608) 266-4058 FOR PRECAST APPROVALS, FAX SHOP DRAWINGS TO (608)264-9275, OR EMAIL SHOP DRAWINGS TO EGETER@CITYOFMADISON.COM.



MARK	REVISION	DATE	BY

15486
 MADISON, WI
 8809
 CONTRACT NO:

CROSS SECTIONS - SOUTH CHARTER STREET ALLEY
 SOUTH CHARTER STREET ALLEY
 M:\DESIGN\Projects\15486\CAD\Streets\15486EN-Corridor.dwg



15486
 X-1

Designed By: NJJ
 Date: 1/29/2026 10:38 AM
 Scale: 1" = 20'
 X-1

