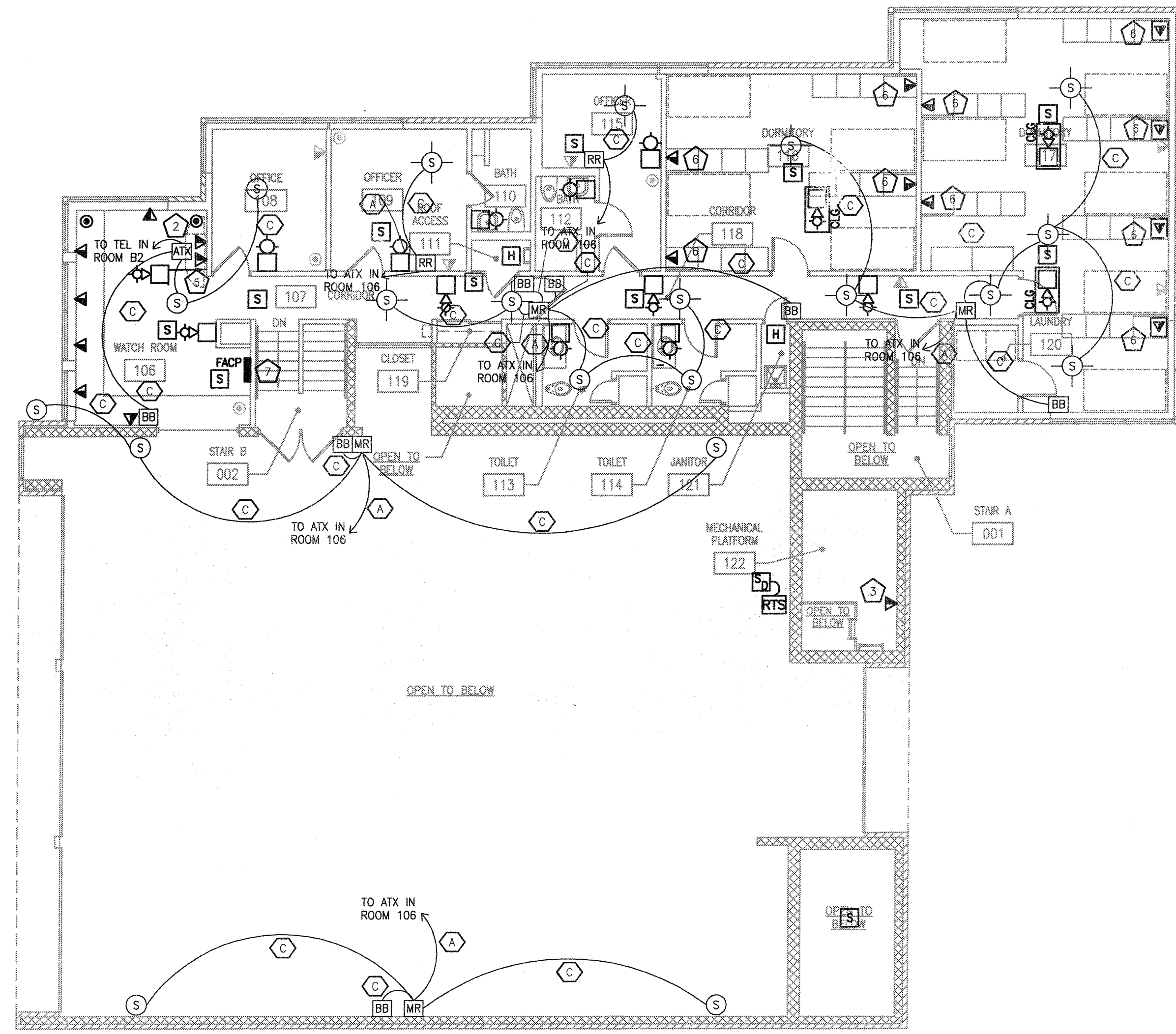


1
E2015
LOWER LEVEL SYSTEMS ADDITION AND REMODELING PLAN
SCALE: 1/8" = 1'-0"



2
E2015
UPPER LEVEL SYSTEMS ADDITION AND REMODELING PLAN
SCALE: 1/8" = 1'-0"

GENERAL NOTES

- SEE SHEET E001 FOR SYMBOLS, ABBREVIATIONS AND SYSTEMS SCHEDULE.
- EXISTING DATA TO REMAIN UNLESS OTHERWISE NOTED.
- EC RESPONSIBLE FOR INSTALLATION OF ALERTING SYSTEM CONDUIT, CABLE AND BOXES. CITY OF MADISON TO INSTALL ALERTING SYSTEM EQUIPMENT AND MAKE FINAL CONNECTIONS.
- FLUSH MOUNT ALL OUTLETS IN ALL NEW WALLS AND EXISTING HOLLOW WALLS. SURFACE MOUNT OUTLETS ONLY ON EXISTING SOLID MASONRY WALLS.
- PROVIDE 2 CAT 6 CABLES TO EACH OUTLET UNLESS INDICATED OTHERWISE.
- PROVIDE 2 DATA JACKS AT EACH OUTLET LOCATION UNLESS INDICATED OTHERWISE.
- PROVIDE CABLE SUPPORT HARDWARE, HARDWARE, TAPE, LABELS, VELCRO AND ALL OTHER MATERIALS NECESSARY FOR A COMPLETE INSTALLATION. INCLUDE LABELING, TERMINATION AND TESTING OF SINGLE MODE FIBER OPTIC CABLE.

SPECIFIC NOTES

- EXISTING DATA TO REMAIN.
- NEW DATA RACK.
- LOCATE TO SUIT BUILDING HVAC CONTROL EQUIPMENT.
- PROVIDE 12 STRAND SINGLE MODE PLENUM RATED CABLE TO DATA RACK LOCATION IN ROOM 106. INSTALL IN 1" PLENUM RATED INNERDUCT THE ENTIRE LENGTH OF RUN. INCLUDE SINGLE MODE LC CONNECTORS FOR TERMINATION OF ALL STRANDS OF SINGLE MODE CABLE.
- PROVIDE 1U RACK MOUNT FIBER OPTIC ENCLOSURE. INCLUDE LC DUPLEX ADAPTER PANEL IN EACH FIBER OPTIC ENCLOSURE.
- PROVIDE EMPTY BOXES AND CONDUIT FOR FUTURE DATA. PROVIDE BLANK COVERPLATES ON BOXES.
- FACP AND FACP TO BE CIRCUITED FROM PANEL A-2 CIRCUIT #1.
- PROVIDE CONNECTIONS FROM CONTACTS IN FIRE SUPPRESSION CONTROL PANEL TO FACP MONITOR MODULE.

DRAWING SET	OWNER REVIEW
COPYRIGHT	2012
STRANG, INC.	
FILE NAME	2011009-E2015.DWG
REVISIONS	
DRAWN	KK
CHECKED	AS
DATE	03-09-12
PROJECT NO.	2011009
PROJECT TITLE	

CITY OF MADISON
FIRE STATION #2
ADDITION AND
REMODELING

421 GRAND CANYON DRIVE
MADISON, WISCONSIN

SHEET TITLE
SYSTEMS ADDITION
AND REMODELING
FLOOR PLANS

SHEET NO.
E201S