



Department of Public Works  
**City Engineering Division**

Robert F. Phillips, P.E.  
**City Engineer**

City-County Building, Room 115  
210 Martin Luther King, Jr. Boulevard  
Madison, Wisconsin 53703  
FAX 608 264 9275  
www.cityofmadison.com

**608 266 4751**

**Assistant City Engineer**  
Michael R. Dailey, P.E.

**Principal Engineers**  
Christina M. Bachmann, P.E.  
John S. Fahrney, P.E.  
Gregory T. Fries, P.E.  
Christopher J. Petykowski, P.E.

**Facilities & Sustainability**  
Jeanne E. Hoffman, Manager  
James C. Whitney, A.I.A.

**Operations Supervisor**  
Kathleen M. Cryan

**GIS Manager**  
David A. Davis, R.L.S.

**Financial Officer**  
Steven B. Danner-Rivers

**Hydrogeologist**  
Brynn Bemis

6/07/2013

**NOTICE OF ADDENDUM  
ADDENDUM NO. 1  
ICE AGE JUNCTION PATH AND JEFFY PATH  
AND  
JEFFY TRAIL SANITARY SEWER ASSESSMENT DISTRICT  
CONTRACT NO. 6886**

Revise and amend the contract document(s) for the above project as stated in this addendum, otherwise, the original document shall remain in effect.

Revise page D-17 of **SECTION D: SPECIAL PROVISIONS** as follows: Under **BID ITEM 90002 PREFABRICATED PEDESTRIAN BRIDGE**, add the following to the list of **Approved Manufacturers**:

Echo Bridge, Inc  
P.O. Box 89  
Elmira, NY 14902  
(607) 734-9456

Replace Sheet W-2 of the **PLANS** with revised Sheet W-2 dated 6/6/13 and discard old sheet. Sheet is updated with correct location of the reference line and station/offset notes. There is no change in the proposed water main or quantities.

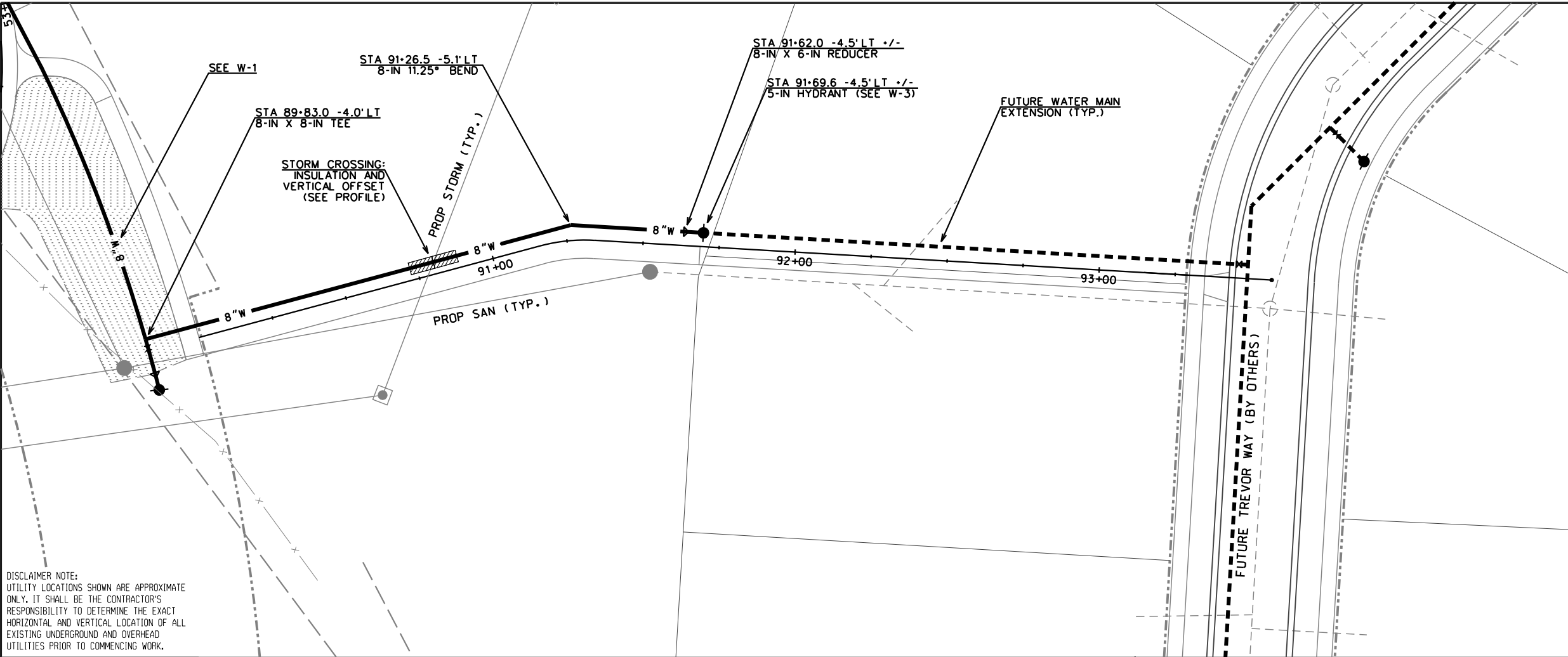
Please note that Sheets W-1 thru W-4 were revised to show the correct project number. Sheets W-1, W-3 & W-4 are not being reissued for this minor change.

Please acknowledge this addendum on page E1 of the contract documents and/or in Section E: Bidder's Acknowledgement on Bid Express.

Electronic version of these documents can be found on Bid Express at <https://www.bidexpress.com/>.

If you are unable to download plan revisions associated with the addendum, please contact the Engineering office at 608-266-4751 receive the material by another route.

Robert F. Phillips, City Engineer



ICE AGE JUNCTION & JEFFY PATHS PROJECT NO. 53WI348		SHEET NO. W-2
WATER PLAN AND PROFILE		
JEFFY SIDEWALK XING	CITY OF MADISON	
PM: DENNIS CAWLEY	DESIGNER: PEH	REVISED 6/6/2013



TO OBTAIN LOCATION OF  
PARTICIPANTS' UNDERGROUND  
FACILITIES BEFORE YOU  
DIG IN WISCONSIN

**CALL DIGGERS HOTLINE**  
**811**  
or 1-800-242-8511  
**TOLL FREE**  
**FAX-A-LOCATE 1-800-338-3860**  
**TDD (FOR HEARING IMPAIRED) 1-800-542-2289**  
WIS. STATUTE 182.0175 (1974)  
REQUIRES MIN. OF 3 WORK DAYS  
NOTICE BEFORE YOU EXCAVATE.

