



Department of Public Works  
**City Engineering Division**

Robert F. Phillips, P.E.  
**City Engineer**

City-County Building, Room 115  
210 Martin Luther King, Jr. Boulevard  
Madison, Wisconsin 53703  
FAX 608 264 9275  
Textnet 866 704 2315  
www.cityofmadison.com

**608 266 4751**

**Assistant City Engineer**

Michael R. Dailey, P.E.

**Principal Engineers**

Christina M. Bachmann, P.E.

John S. Fahrney, P.E.

Gregory T. Fries, P.E.

Christopher J. Petykowski, P.E.

**Facilities & Sustainability**

Jeanne E. Hoffman, Manager

James C. Whitney, A.I.A.

**Operations Supervisor**

Kathleen M. Cryan

**GIS Manager**

David A. Davis, R.L.S.

**Financial Officer**

Steven B. Danner-Rivers

**Hydrogeologist**

Brynn Bemis

**February 19, 2013**

**NOTICE OF ADDENDUM**

**ADDENDUM NO. 1**

**CONTRACT NO. 7011**

**SOUTH WEBSTER STREET ASSESSMENT DISTRICT - 2013**

Revise and amend the contract document(s) and plans for the above project as stated in this addendum, otherwise the original documents shall remain in effect.

Revise and amend the contract document(s) and plans for the above project as stated in this addendum, otherwise the original documents shall remain in effect.

**ADVERTISEMENT FOR BIDS:** Delete page A-1. Insert Revised page A-1

The deadline for submittal of bids has been revised to February 22, 2013 at **3:00 PM** at 1600 Emil Street.

**PLANS:** Delete page P-2. Insert sheet P-2 (Rev 2-19-13)

Additional sidewalk, curb, and ramp replacement and pavement patching at E. Washington Ave.

**PROPOSAL:**

**DELETE PAGES E-5 TO E-14**

**INSERT PAGES E-5 TO E-14:** Added item 90010 - Excavation, Hauling and Disposal of Contaminated Soil. Revised several quantities to account for plan revisions, and removed Trench Patch Type III from storm sewer quantities.

**SPECIAL PROVISIONS:**

**REMOVE THE FOLLOWING FROM BID ITEM 90001 – INCENTIVE/DISINCENTIVE FOR COMPLETION OF WORK:**

DISINCENTIVE PAY REDUCTION

February 19, 2013

Page 2

Should the Contractor fail to complete all of the work necessary to completely finish the project under this contract prior to 7:00 P.M. on June 30, 2012, the Contractor shall be liable to the City for a pay reduction in the amount of \$3,000 per day or portion thereof, for each calendar day or portion thereof after 7:00 P.M. on June 30, 2012 that work remains incomplete.

If the contract time expires prior to completing the work necessary to completely finish the project, liquidated damages in accordance with 109.9 of the Standard Specifications will be affixed in the amount of the disincentive pay reduction.

**INSERT THE FOLLOWING INTO BID ITEM 90001 – INCENTIVE/DISINCENTIVE FOR COMPLETION OF WORK:**

**DISINCENTIVE PAY REDUCTION**

Should the Contractor fail to complete all of the work necessary to completely finish the project under this contract prior to 7:00 P.M. on July 5, 2013, the Contractor shall be liable to the City for a pay reduction in the amount of \$3,000 per day or portion thereof, for each calendar day or portion thereof after 7:00 P.M. on July 5, 2013 that work remains incomplete.

If the contract time expires prior to completing the work necessary to completely finish the project, liquidated damages in accordance with 109.9 of the Standard Specifications will be affixed in the amount of the disincentive pay reduction.

**ADD THE FOLLOWING TO:**

**BID ITEM 70001 – FURNISH AND INSTALL 4-INCH PIPE AND FITTINGS**

**BID ITEM 70002 – FURNISH AND INSTALL 6-INCH PIPE AND FITTINGS**

**BID ITEM 70003 – FURNISH AND INSTALL 8-INCH PIPE AND FITTINGS**

**BID ITEM 70004 – FURNISH AND INSTALL 10-INCH PIPE AND FITTINGS**

Abandoned gas main as shown on the plans is per Madison Gas & Electric (MG&E) records. Any necessary removal of this gas main shall be considered incidental to water main installation. Contact MG&E prior to performing any work near live or abandoned gas main to verify the exact location and state of these utilities.

**ADD BID ITEM 90010 – EXCAVATION, HAULING AND DISPOSAL OF CONTAMINATED SOIL**

**DESCRIPTION**

This work shall conform with the requirements of Standard specifications, pertinent parts of the Wisconsin Administration Code (Department of Natural Resources Environmental Investigation and Remediation of Environmental Contamination, Chapters NR 700-736) and as supplemented herein.

It is known that the property located at 118 King St. was previously used as a filling station. Due to this known past use, there is a possibility that contaminated soil will be encountered within the right-of-way, adjacent to this property.

This work shall consist of excavating, loading, hauling, and disposal of the contaminated soil at a City of Madison approved bio-remediation site, herein referred to as “Biopile Facility.” The City of Madison is to be listed as the generator of this material for disposal purposes. The Biopile Facility to be used is

the The Landfill Facility to be used is the Dane County Landfill, 7102 US Highway 12 & 18, Madison, WI 53718. The Landfill Facility will bill the City of Madison directly for tipping/treatment fees for the ash contaminated fill delivered to the facility by the Contractor.

Per NR 718.07, a solid waste collection and transportation service operating license is required under NR 502.06 whenever excavated contaminated soils are transported.

Soil samples in the potentially contaminated areas have not been taken. Therefore, the estimated quantity of this bid item has been assumed, and this bid item could ultimately not be used. The inclusion of this bid item in this contract is solely due to the known past use of a property adjacent to the limits of this project.

## **COORDINATION**

The City of Madison will provide an Environmental Consultant (staff member or hired consultant) should contaminated material be discovered. Contact Brynn Bemis, City of Madison Engineering Department at (608) 267-1986 to coordinate the onsite activities and testing.

The role of the Environmental Consultant will be limited to: (1) determining the location and limits of contaminated soil to be excavated based on soil analytical results from previous investigations, visual observations, and field screening of soil that is excavated; (2) identifying contaminated soils to be hauled to the treatment/disposal facility; and (3) documenting that activities associated with management of contaminated soil are in conformance with the contaminated soil management methods for this project as specified herein.

Provide at least 14 calendar days notice of the pre-construction conference date to the Environmental Consultant. At the pre-construction conference, provide a schedule for all excavation activities in the areas of possible contamination to the Environmental Consultant. Notify the engineer and Environmental Consultant at least 14 calendar days prior to commencement of excavation activities in each of the possible contaminated areas.

Coordinate with the Environmental Consultant to ensure that the Environmental Consultant is present during excavation activities in the possible contaminated areas. Excavation work in each of the possible contaminated areas shall proceed on a continuous basis until excavation work is completed.

The Contractor shall note that borings in the potentially contaminated area have not been taken. The Contractor shall coordinate any necessary testing activities with the Environmental Consultant. These testing activities may be required to take place prior to excavation in the potentially contaminated area.

The Environmental Consultant will be responsible for obtaining the necessary approvals for disposal of contaminated soils from the treatment/disposal facility. Do not transport contaminated soil off-site without prior approval from the Environmental Consultant.

## **CONSTRUCTION**

Excavated soil will be periodically field screened by the Environmental Consultant. Assist the Environmental Consultant in collecting soil samples using excavation equipment. Soil samples will be collected by the Environmental Consultant from the bucket of the excavation equipment. The sampling frequency shall be a maximum of one sample for every 10 cubic yards excavated. Field screening of soil is expected to take up to 10 minutes for each sample. During the time the Environmental Consultant

is screening the soil, the contractor may continue to excavate up to an additional 30 cubic yards of soil, provided the soil is loaded into trucks and the trucks remain on site. Following field screening of soil, the Environmental Consultant will identify contaminated soils to be hauled to the Biopile Facility and notify the contractor if the excavation can be backfilled. The ends of the storm sewer, sanitary sewer, and water main trenches shall have bentonite clay dams installed.

Soils designated by the Environmental Consultant as contaminated shall be hauled directly to the Biopile Facility. Use loading and hauling practices that are appropriate to prevent any spills or releases of contaminated soils and residues. If spills or releases occur, immediately notify the Environmental Consultant and engineer. Immediately recover all contaminated soil, residue, and any new contamination that was caused by the spill or release.

Prior to start of construction in the Potential Contaminated Soil Areas, the Environmental Consultant will prepare the application to treat or dispose of contaminated soil (Form 4400-120) and submit the form to the Wisconsin Department of Natural Resources for approval. The Environmental Consultant will also obtain approvals from the Biopile Facility for the treatment and disposal of contaminated soil.

Documentation of contaminated soil disposal at the Biopile Facility shall include copies of original Biopile Facility weight tickets, signed by the scale attendant, clearly documenting final and tare weights of the soil received by the Biopile Facility, the date and time of weighing, and the contractor's truck number. Submit copies of all weight tickets to the engineer and the Environmental Consultant following completion of hauling activities. Arrange to have the soil treatment certificate from the Biopile Facility submitted to the engineer and the Environmental Consultant following completion of soil treatment.

## **MEASUREMENT**

Excavation, Hauling and Disposal of Petroleum Contaminated Soil will be measured in tons of material disposed of at the Biopile Facility.

## **PAYMENT**

Payment is full compensation for contaminated soil excavation, segregation, hauling, and disposal; assistance with soil sampling; dewatering soil prior to transport; bentonite clay dams; temporary stockpiling; replacement fill material; weighing of trucks; obtaining weight tickets from scale attendant; providing original copies of weight tickets to the engineer and the Environmental Consultant; arranging to have certificate of soil treatment submitted to the engineer and the Environmental Consultant; and for furnishing all labor, tools, equipment, and incidentals necessary to complete the work.

Please acknowledge this addendum on page E1 of the contract documents.

Electronic version of these documents can be found on the City of Madison web site at:

<http://www.cityofmadison.com/business/PW/contracts/openforBid.cfm>

February 19, 2013

Page 5

If you are unable to download plan revisions associated with the addendum, please contact the Engineering office at 608-266-4751 receive the material by another route.

A handwritten signature in black ink, appearing to read 'R. Phillips', written over a horizontal line.

Robert F. Phillips, City Engineer

RFP:jmw

**SECTION A: ADVERTISEMENT FOR BIDS**

**REQUEST FOR BID FOR PUBLIC WORKS CONSTRUCTION  
CITY OF MADISON, WISCONSIN**

**A BEST VALUE CONTRACTING MUNICIPALITY**

<b>CONTRACT NO.</b>	<b>PROJECT NAME:</b>
7011	WEBSTER STREET RECONSTRUCTION
SBE GOAL	8%

Plans and Specifications are available at 1600 Emil Street, Madison, WI 53713; 608-267-1197 or on our website at [www.cityofmadison.com/business/pw/contracts/openforBid.cfm](http://www.cityofmadison.com/business/pw/contracts/openforBid.cfm).

**PREQUALIFICATIONS**

Bidders who have not been prequalified by the City Engineer and Affirmative Action Director for the period of **February 1, 2013 to January 31, 2014** must submit their application on or before **3:00 p.m.**, FEB. 22, 2013, Room 115, City-County Building, Madison, WI 53703. Postmark is not applicable. Contractors be prequalified by the City Engineer including an affirmative action plan approved by the Affirmative Action Director prior to the bid opening or the bid will be rejected. Forms are available at the same location or on our website at [www.cityofmadison.com/business/pw/forms.cfm](http://www.cityofmadison.com/business/pw/forms.cfm).

**PRE-BID MEETING**

Representatives of the Affirmative Action Department will be present to discuss the Small Business Enterprise requirements on FEB. 15, 2013 at 1:00 PM at 1600 Emil Street, Madison Wisconsin.

**OTHER REQUIREMENTS**

Sealed bids must be accompanied with a Bid Bond equal to at least 5% of the bid or a Certificate of Annual/Biennial Bid Bond or certified check, payable to the City Treasurer.

Prevailing Wage Rates may be required and are attached in Section I of the contract. See Special Provisions to determine applicability.

Deadline for the Submittal of Bid is FEB. 22, 2013 by **3:00 PM**, at 1600 Emil Street, Madison, WI 53713.

Bid Opening will be on MARCH 1, 2013 at 1:30 PM at 1600 Emil Street, Madison, WI 53713.

**REQUEST FOR BIDS FOR PUBLIC WORKS CONSTRUCTION FOR THE CITY OF MADISON, WISCONSIN**

**A BEST VALUE CONTRACTING MUNICIPALITY**

Plans and Specifications for Public Works Projects that are open for bid are available on the City of Madison website at <http://www.cityofmadison.com/business/PW/contracts/openforBid.cfm> or by calling City Engineering at 608-266-4751.

Sealed bids must be accompanied with a Bid Bond equal to at least 5% of the bid or a Certificate of Annual/Biennial Bid Bond or certified check, payable to the City Treasurer.

Prevailing Wage Rates may be required and are attached in Section I of the contract. See Special Provisions to determine applicability.

Bidders must be prequalified with the City Engineer and the Affirmative Action Director. Deadline date for submittal of application is noticed on our website. Forms are available on the web at <http://www.cityofmadison.com/business/pw/forms.cfm> or by contacting City Engineering at 608-266-4620

Publ. WSJ 2/8/13 & 2/15/13

**PROPOSAL**

\_\_\_\_\_  
NAME OF BIDDER

**SOUTH WEBSTER STREET ASSESSMENT DISTRICT - 2013**

**CONTRACT NO. 7011**

REV 2-19-13

ITEM	TYPE OF WORK	ESTIMATED QUANTITIES		UNIT PRICE BID	TOTAL BID
<b>STREET ACCOUNT NO. CS53-58250-810571-00-53W1194-53TIF032</b>					
10701	TRAFFIC CONTROL	1.00	LUMP SUM		
10721	TRAFFIC CONTROL SIGN- PORTABLE CHANGEABLE MESSAGE	7.00	DAYS		
10801	ROOT CUTTING - CURB & GUTTER (UNDISTRIBUTED)	20.00	L.F.		
10802	ROOT CUTTING - SIDEWALK (UNDISTRIBUTED)	20.00	L.F.		
10911	MOBILIZATION	1.00	LUMP SUM		
20101	EXCAVATION CUT	3,170.00	C.Y.		
20219	BREAKER RUN	900.00	TON		
20140	GEOTEXTILE FABRIC TYPE SAS (NON- WOVEN)	1,600.00	S.Y.		
20301	SAWCUT CONCRETE PAVEMENT, FULL DEPTH	160.00	L.F.		
20303	SAWCUT BITUMINOUS PAVEMENT, FULL DEPTH	105.00	L.F.		
20321	REMOVE CONCRETE PAVEMENT	3,800.00	S.Y.		
20322	REMOVE CONCRETE CURB & GUTTER	1,560.00	L.F.		
20323	REMOVE CONCRETE SIDEWALK & DRIVE	11,200.00	S.F.		
20327	REMOVE TREE GRATE	3.00	EACH		
20403	GRUBBING	20.00	I.D.		
30201	TYPE 'A' CONCRETE CURB & GUTTER	1,435.00	L.F.		
30203	TYPE 'X' CONCRETE CURB & GUTTER	210.00	L.F.		
30208	HAND FORMED CONCRETE CURB & GUTTER (TREE LOCATIONS)	50.00	L.F.		
30301	5" CONCRETE SIDEWALK	9,640.00	S.F.		

**SOUTH WEBSTER STREET ASSESSMENT DISTRICT - 2013**

**CONTRACT NO. 7011**

REV 2-19-13

ITEM	TYPE OF WORK	ESTIMATED QUANTITIES		UNIT PRICE BID	TOTAL BID
30302	7" CONCRETE SIDEWALK AND DRIVE	2,390.00	S.F.		
30340	CURB RAMP DETECTABLE WARNING FIELD	152.00	S.F.		
30342	4'X8' TREE GRATE (INCLUDING FRAME)	12.00	EACH		
40101	CRUSHED AGGREGATE BASE COURSE GRADATION NO. 1	1,560.00	TON		
40102	CRUSHED AGGREGATE BASE COURSE GRADATION NO. 2	2,540.00	TON		
40203	HMA PAVEMENT TYPE E-3	1,015.00	TON		
40231	ASPHALT DRIVE AND TERRACE	20.00	S.Y.		
40301	FULL WIDTH GRINDING	220.00	S.Y.		
60800	PAVEMENT MARKING EPOXY, LINE, 4- INCH	300.00	L.F.		
60801	PAVEMENT MARKING EPOXY, DOUBLE LINE, 4-INCH	200.00	L.F.		
60802	PAVEMENT MARKING EPOXY, LINE, 6- INCH	750.00	L.F.		
60803	PAVEMENT MARKING EPOXY, LINE, 8- INCH	400.00	L.F.		
60806	PAVEMENT MARKING EPOXY, RADIUS LINE, 6-INCH	210.00	L.F.		
60814	PAVEMENT MARKING EPOXY, CROSSWALK, 12-INCH	700.00	L.F.		
60816	PAVEMENT MARKING EPOXY, CONTINENTAL CROSSWALK, 18-INCH	280.00	L.F.		
60818	PAVEMENT MARKING EPOXY, STOP LINE, 24-INCH	200.00	L.F.		
60822	PAVEMENT MARKING EPOXY, SYMBOL, BIKE SHARROW	16.00	EACH		
60823	PAVEMENT MARKING EPOXY, SYMBOL, BIKE LANE	10.00	EACH		
60830	PAVEMENT MARKING EPOXY, SYMBOL, RIGHT ARROW	2.00	EACH		
60833	SYMBOL, STRAIGHT AND RIGHT ARROW	2.00	EACH		
60834	PAVEMENT MARKING EPOXY, WORD, ONLY	2.00	EACH		
60880	PAVEMENT MARKING REMOVAL, 4- INCH	200.00	L.F.		



**SOUTH WEBSTER STREET ASSESSMENT DISTRICT - 2013**

**CONTRACT NO. 7011**

REV 2-19-13

ITEM	TYPE OF WORK	ESTIMATED QUANTITIES		UNIT PRICE BID	TOTAL BID
60881	PAVEMENT MARKING REMOVAL, 6-INCH	200.00	L.F.		
60885	PAVEMENT MARKING REMOVAL, 24-INCH	40.00	L.F.		
60887	PAVEMENT MARKING REMOVAL, ARROW	2.00	EACH		
60888	PAVEMENT MARKING REMOVAL, WORD	2.00	EACH		
60942	TEMPORARY PAVEMENT MARKING TAPE, REMOVABLE, REFLECTIVE, LINE, 6-INCH	200.00	L.F.		
60974	TEMPORARY PAVEMENT MARKING TAPE, REMOVABLE, REFLECTIVE, LINE, 12-INCH	40.00	L.F.		
90001	INCENTIVE/DISINCENTIVE FOR COMPLETION OF WORK	10.00	DAYS	\$ 3,000.00	\$30,000.00
90002	HMA PAVEMENT TYPE E-3 MODIFIED	670.00	TON		
90003	HIGH FRICTION SURFACE TREATMENT, GREEN	33.00	S.Y.		
90004	PAVED SURFACE TEMPORARY	1,130.00	S.Y.		
90005	TEMPORARY CROSSWALK ACCESS	6.00	EACH		
90006	FENCE SAFETY	1,400.00	L.F.		
90007	UNDISTRIBUTED SHEET MEMBRANE WATERPROOFING	200.00	S.F.		
90008	UNDISTRIBUTED ABANDON VAULT	200.00	S.F.		
90009	UNDISTRIBUTED VAULT WALL	150.00	S.F.		
90010	EXCAVATION, HAULING AND DISPOSAL OF CONTAMINATED SOIL	900.00	TON		
<b>STREET ACCOUNT NO. CS53-58270-810571-00-53W1194-53TIF032</b>					
20217	CLEAR STONE	2,500.00	TON		
20502	ADJUST CATCHBASIN	1.00	EACH		
21001	EROSION CONTROL PLAN & IMPLEMENTATION	1.00	LUMP SUM		
21002	EROSION CONTROL INSPECTION	32.00	EACH		
21011	CONSTRUCTION ENTRANCE	2.00	EACH		
21012	STREET CONSTRUCTION ENTRANCE BERM	1.00	EACH		

**SOUTH WEBSTER STREET ASSESSMENT DISTRICT - 2013**

**CONTRACT NO. 7011**

REV 2-19-13

ITEM	TYPE OF WORK	ESTIMATED QUANTITIES		UNIT PRICE BID	TOTAL BID
21013	STREET SWEEPING	1.00	LUMP SUM		
21015	STREET CONSTRUCTION BERM	480.00	L.F.		
21025	SILT SOCK (12 INCH) - PROVIDE, INSTALL & MAINTAIN	480.00	L.F.		
21026	SILT SOCK (12 INCH) REMOVE & RESTORE	480.00	L.F.		
21042	INLET PROTECTION, TYPE D - PROVIDE & INSTALL (UNDISTRIBUTED)	2.00	EACH		
21043	INLET PROTECTION, TYPE D - MAINTAIN (UNDISTRIBUTED)	16.00	EACH		
21044	INLET PROTECTION, TYPE D - REMOVE (UNDISTRIBUTED)	2.00	EACH		
21052	POLYMER STABILIZATION	6,752.00	S.Y.		
21056	INLET PROTECTION TYPE D HYBRID - PROVIDE & INSTALL	33.00	EACH		
21057	INLET PROTECTION TYPE D HYBRID - MAINTAIN	342.00	EACH		
21058	INLET PROTECTION TYPE D HYBRID - REMOVE	33.00	EACH		
50411	12 INCH RCP STORM SEWER PIPE	479.00	L.F.		
50741	TYPE "H" INLET	16.00	EACH		
90030	MOUNTABLE TRACKING PADS	3.00	EACH		
<b>STORM ACCOUNT NO. ESTM-58270-810381-00-53W1194</b>					
10702	TRAFFIC CONTROL FOR STORM SEWER INSTALLATION	1.00	LUMP SUM		
10912	MOBILIZATION FOR STORM SEWER INSTALLATION	1.00	LUMP SUM		
20102	ROCK EXCAVATION (UNDISTRIBUTED)	10.00	C.Y.		
20312	REMOVE CATCHBASIN	3.00	EACH		
20313	REMOVE INLET	9.00	EACH		
20314	REMOVE PIPE	125.00	L.F.		
20335	ABANDON SEWER PIPE WITH SLURRY	1.20	C.Y.		
20337	PIPE PLUG STORM	3.00	EACH		

**SOUTH WEBSTER STREET ASSESSMENT DISTRICT - 2013**

**CONTRACT NO. 7011**

REV 2-19-13

ITEM	TYPE OF WORK	ESTIMATED QUANTITIES		UNIT PRICE BID	TOTAL BID
50211	SELECT BACKFILL FOR STORM SEWER	701.00	T.F.		
50401	12 INCH STORM SEWER PIPE (UNDISTRIBUTED)	10.00	L.F.		
50402	15 INCH STORM SEWER PIPE (UNDISTRIBUTED)	10.00	L.F.		
50412	15 INCH RCP STORM SEWER PIPE	203.00	L.F.		
50413	18 INCH RCP STORM SEWER PIPE	19.00	L.F.		
50499	CONCRETE COLLAR	2.00	EACH		
50723	3'X3' STORM SAS	7.00	EACH		
50724	4'X4' STORM SAS	1.00	EACH		
50792	STORM SEWER TAP	1.00	EACH		
50801	UTILITY LINE OPENING (ULO)	34.00	EACH		
90031	3'X4' STORM SAS	1.00	EACH		
90032	3'X6' STORM SAS	3.00	EACH		
90033	MODIFIED "H" INLET (UNDISTRIBUTED)	1.00	EACH		
90034	FIELD BEND	1.00	EACH		
90035	TYPE 1 PRIVATE STORM RECONNECTION	2.00	EACH		
90036	TYPE 2 PRIVATE STORM RECONNECTION	5.00	EACH		
90037	10-INCH C-900 STORM SEWER PIPE (UNDISTRIBUTED)	10.00	L.F.		
<b>SANITARY ACCOUNT NO. ES01-58275-810332-00-53W1194</b>					
10704	TRAFFIC CONTROL FOR SANITARY SEWER CONSTRUCTION	1.00	LUMP SUM		
10914	MOBILIZATION FOR SANITARY SEWER CONSTRUCTION	1.00	LUMP SUM		
20311	REMOVE SEWER ACCESS STRUCTURE	10.00	EACH		
20315	REMOVE PIPE (SANITARY)	473.00	L.F.		
20336	SANITARY SEWER PLUG PIPE	40.00	EACH		

**SOUTH WEBSTER STREET ASSESSMENT DISTRICT - 2013**

**CONTRACT NO. 7011**

REV 2-19-13

ITEM	TYPE OF WORK	ESTIMATED QUANTITIES		UNIT PRICE BID	TOTAL BID
20321	REMOVE CONCRETE PAVEMENT	84.00	S.Y.		
20501	ADJUST SEWER ACCESS STRUCTURE	2.00	EACH		
50103	RECONSTRUCT BENCH & FLOWLINES	2.00	EACH		
50212	SELECT FILL FOR SANITARY SEWER MAIN	1,545.00	T.F.		
50225	UTILITY TRENCH PATCH TYPE III	40.00	T.F.		
50301	8" PVC SANITARY SEWER PIPE SDR-35	904.00	L.F.		
50321	8" PVC PRESSURE SANITARY SEWER PIPE	127.00	L.F.		
50353	SANITARY SEWER LATERAL SDR-35 (6" & 8" DIAMETER)	480.00	L.F.		
50354	RECONNECT SANITARY LATERAL	16.00	EACH		
50361	WASTEWATER CONTROL	1.00	LUMP SUM		
50390	SEWER ELECTRONIC MARKERS	34.00	EACH		
50701	FOUR FOOT DIAMETER SAS	10.00	EACH		
50780	CLEANOUT	1.00	EACH		
50791	SANITARY SEWER TAP	7.00	EACH		
50801	UTILITY LINE OPENING (UNDISTRIBUTED)	1.00	EACH		
90070	REMOVE CLEANOUT	1.00	EACH		
90071	SANITARY SEWER LATERAL PRESSURE	34.00	L.F.		
<b>WATER ACCOUNT NO. EW01-58273-810455-00-53W1194</b>					
10703	TRAFFIC CONTROL FOR WATER MAIN INSTALLATION	1.00	LUMP SUM		
10913	MOBILIZATION FOR WATER MAIN INSTALLATION	1.00	LUMP SUM		
40391	CONCRETE SIDEWALK - RESURFACING	100.00	S.F.		
50801	UTILITY LINE OPENING (UNDISTRIBUTED)	3.00	EACH		
70001	FURNISH AND INSTALL 4 INCH PIPE & FITTINGS	120.00	L.F.		

**SOUTH WEBSTER STREET ASSESSMENT DISTRICT - 2013**

**CONTRACT NO. 7011**

REV 2-19-13

ITEM	TYPE OF WORK	ESTIMATED QUANTITIES		UNIT PRICE BID	TOTAL BID
70002	FURNISH AND INSTALL 6 INCH PIPE & FITTINGS	40.00	L.F.		
70003	FURNISH AND INSTALL 8 INCH PIPE & FITTINGS	380.00	L.F.		
70004	FURNISH AND INSTALL 10 INCH PIPE & FITTINGS	120.00	L.F.		
70402	ROCK EXCAVATION (UNDISTRIBUTED)	30.00	C.Y.		
70405	CUT-IN CONNECTION	6.00	EACH		
70407	FURNISH AND INSTALL HYDRANT	3.00	EACH		
70408	SELECT FILL - SAND FOR WATER	660.00	L.F.		
70413	FURNISH AND INSTALL STYROFOAM	24.00	L.F.		
70414	CUT OFF EXISTING WATER MAIN	4.00	EACH		
70415	ABANDON WATER VALVE BOX	7.00	EACH		
70416	ABANDON HYDRANT	3.00	EACH		
70417	ABANDON WATER VALVE ACCESS STRUCTURE	9.00	EACH		
70418	ADJUST WATER VALVE BOX	2.00	EACH		
70427	ADJUST WATER VALVE BOX	4.00	EACH		
70428	FURNISH AND INSTALL 4 INCH VALVE	3.00	EACH		
70429	FURNISH AND INSTALL 6 INCH VALVE	1.00	EACH		
70430	FURNISH AND INSTALL 8 INCH VALVE	4.00	EACH		
70444	FURNISH AND INSTALL 10 INCH VALVE	1.00	EACH		
70452	RECONNECT / DISCONNECT SERVICE LATERAL - 1.5 INCHES OR 2 INCHES	1.00	EACH		
70453	FURNISH AND INSTALL CURB BOX	2.00	EACH		
70455	FURNISH AND INSTALL CURB STOP	2.00	EACH		
70456	ADJUST WATER SERVICE BOX	3.00	EACH		
90160	ABANDON EXISTING CURB BOX	3.00	EACH		

**SOUTH WEBSTER STREET ASSESSMENT DISTRICT - 2013**

**CONTRACT NO. 7011**

REV 2-19-13

ITEM	TYPE OF WORK	ESTIMATED QUANTITIES		UNIT PRICE BID	TOTAL BID
<b>STREET LIGHT ACCOUNT NO. CS53-58545-810571-00-53W1194</b>					
60222	FURNISH & INSTALL 3 INCH PVC (SCHEDULE 80) CONDUIT	600.00	L.F.		
60224	FURNISH & INSTALL 3 INCH PVC (SCHEDULE 40) CONDUIT	300.00	L.F.		
60230	FURNISH & INSTALL 2 INCH PVC (SCHEDULE 80) CONDUIT	200.00	L.F.		
60232	FURNISH & INSTALL 2 INCH PVC (SCHEDULE 40) CONDUIT	2,300.00	L.F.		
60234	FURNISH & INSTALL 1 1/4 INCH PVC (SCHEDULE 40) CONDUIT	100.00	L.F.		
60401	CONSTRUCT LB-1 BASE	9.00	EACH		
60403	CONSTRUCT LB-3 BASE	10.00	EACH		
60409	CONSTRUCTION OFFSET BASE	1.00	EACH		
60412	CONSTRUCT TYPE "M" BASE	1.00	EACH		
60421	REMOVE STREET LIGHT BASE	13.00	EACH		
60261	ELECTRICAL TRENCH	1,500.00	L.F.		
60702	CONSTRUCT ELECTRICAL HANDHOLE TYPE 1	4.00	EACH		
90120	TEMPORARY WOOD POLE	4.00	EACH		
<b>TRAFFIC SIGNAL ACCOUNT NO. CS53-58540-810571-00-53W1194-53TIF032</b>					
50225	UTILITY TRENCH PATCH TYPE III	30.00	T.F.		
60222	FURNISH & INSTALL 3 INCH PVC (SCHEDULE 80) CONDUIT	2,800.00	L.F.		
60224	FURNISH & INSTALL 3 INCH PVC (SCHEDULE 40) CONDUIT	2,800.00	L.F.		
60228	FURNISH & INSTALL 2 1/2 INCH PVC (SCHEDULE 40) CONDUIT	100.00	L.F.		
60241	GOPHER RACEWAY FOR ELECTRICAL CONDUIT OR CABLE-IN-DUCT	50.00	L.F.		
60407	CONSTRUCT LB-8 BASE	3.00	EACH		
60411	CONSTRUCT TYPE "G" BASE	9.00	EACH		
60412	CONSTRUCT TYPE "M" BASE	2.00	EACH		

**SOUTH WEBSTER STREET ASSESSMENT DISTRICT - 2013**

**CONTRACT NO. 7011**

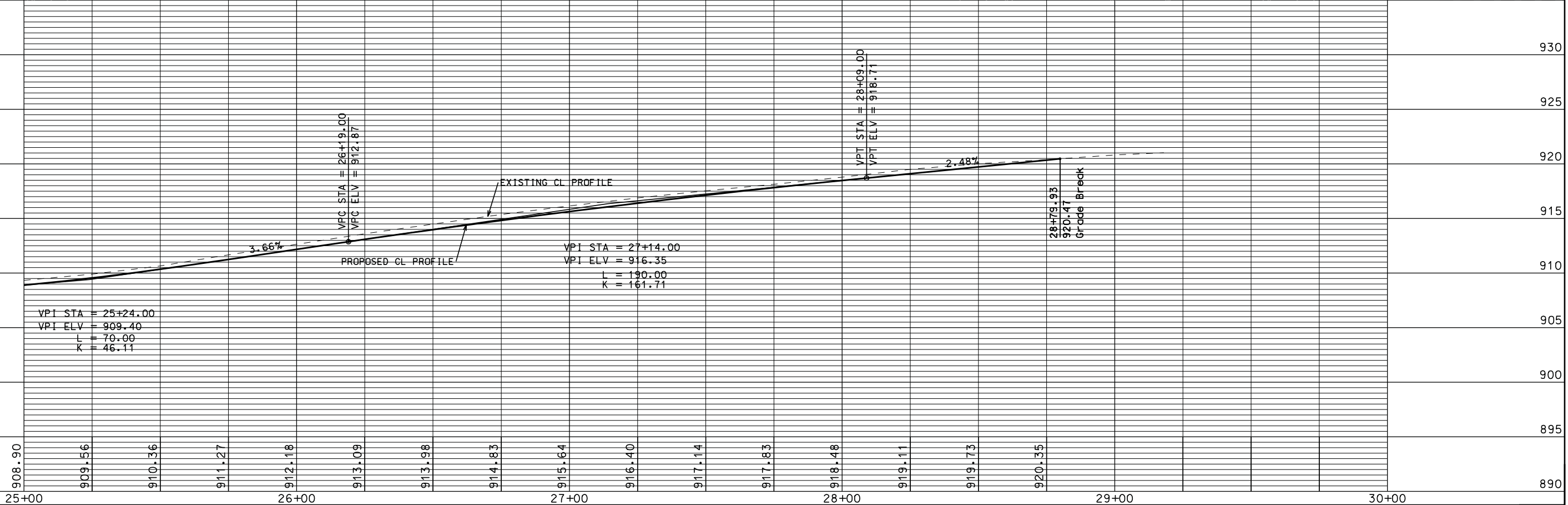
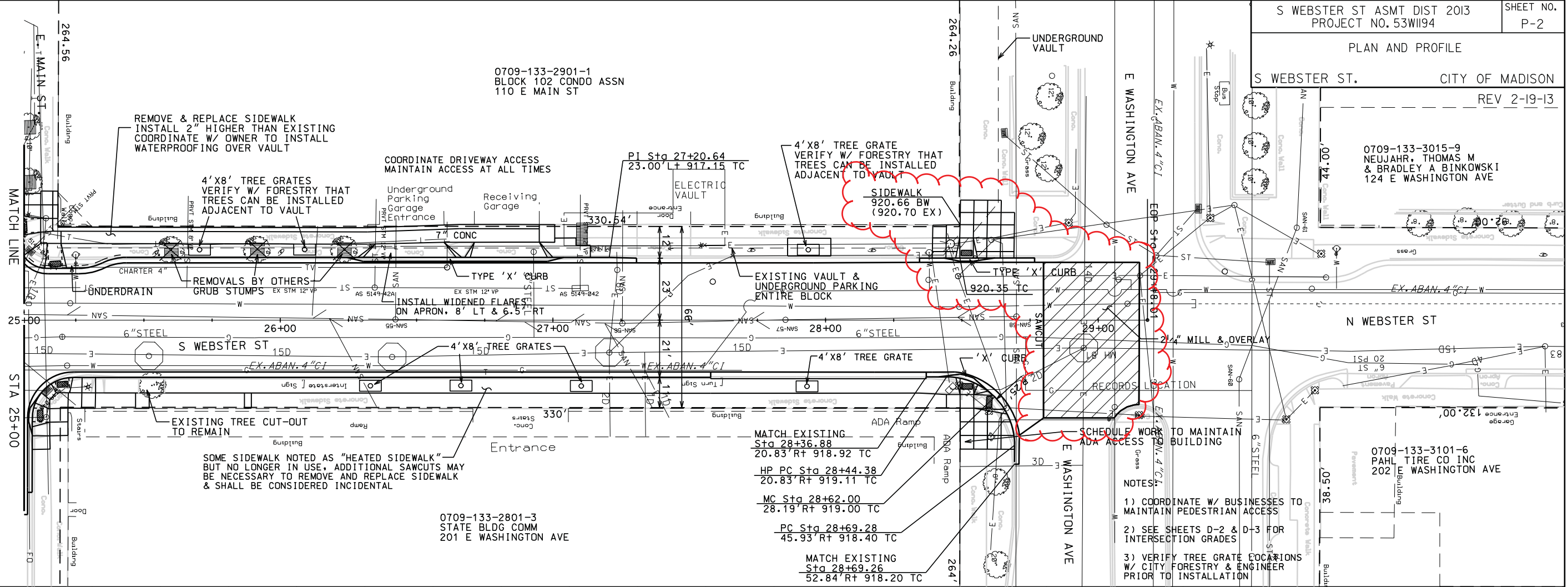
REV 2-19-13

ITEM	TYPE OF WORK	ESTIMATED QUANTITIES		UNIT PRICE BID	TOTAL BID
60414	BASE FOR MULTISPACE PARKING METER	1.00	EACH		
60423	REMOVE TRAFFIC SIGNAL BASE	9.00	EACH		
60427	REMOVE ELECTRICAL HANDHOLE	11.00	EACH		
60261	ELECTRICAL TRENCH	1,800.00	L.F.		
60702	CONSTRUCT ELECTRICAL HANDHOLE TYPE 1	7.00	EACH		
60706	CONSTRUCT ELECTRICAL HANDHOLE TYPE 5	5.00	EACH		
60708	CONSTRUCT CITY FURNISHED HANDHOLE TYPE 7	1.00	EACH		
60709	REPLACE STEEL FRAME AND COVER	4.00	EACH		
90120	TEMPORARY WOOD POLE	6.00	EACH		

TOTAL

--

0709-133-2901-1  
BLOCK 102 CONDO ASSN  
110 E MAIN ST



- NOTES:
- 1) COORDINATE W/ BUSINESSES TO MAINTAIN PEDESTRIAN ACCESS
  - 2) SEE SHEETS D-2 & D-3 FOR INTERSECTION GRADES
  - 3) VERIFY TREE GRATE LOCATIONS W/ CITY FORESTRY & ENGINEER PRIOR TO INSTALLATION

PLOT SCALE: \_\_\_\_\_

REV. DATE: \_\_\_\_\_

ORIGINATOR: CITY OF MADISON, STREETS DIVISION