

Madison, Wisconsin

CITY OF MADISON

MADISON WATER UTILITY DEPARTMENT OF PUBLIC WORKS

PLAN OF PROPOSED IMPROVEMENT

HIGHLAND AVE WATER MAIN REPLACEMENT

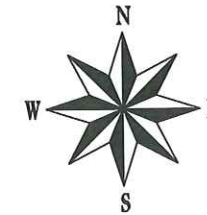
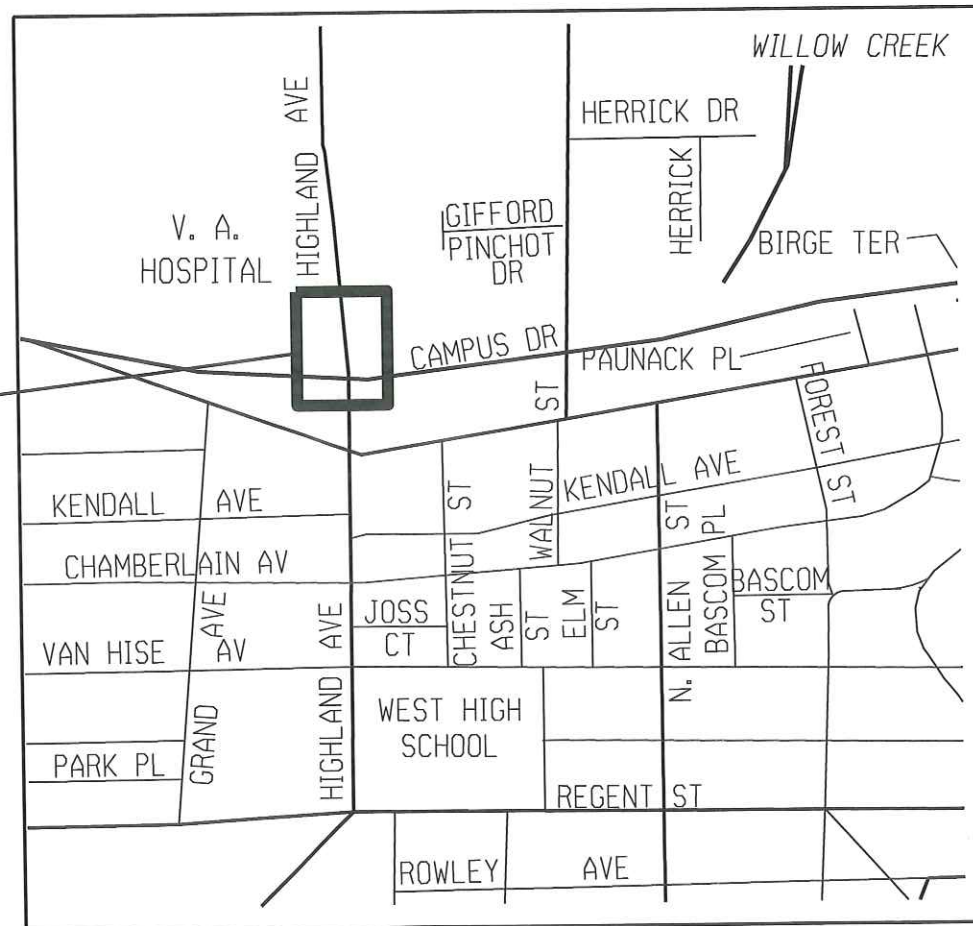
CITY PROJECT NO. 53W1615

CONTRACT NO. 7071

INDEX OF SHEETS

SHEET NO. 1	TITLE SHEET
SHEET NO. W-1	WATER PLAN & PROFILE (40-SCALE)
SHEET NO. W-2	WATER PLAN & PROFILE (20-SCALE)

PROJECT
LOCATION

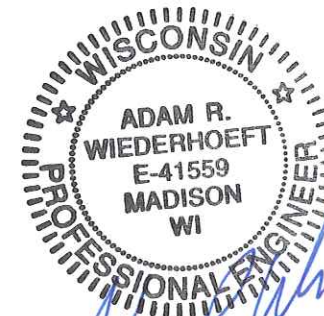


PUBLIC IMPROVEMENT PROJECT APPROVED
APRIL 16, 2013
BY THE COMMON COUNCIL
OF MADISON, WISCONSIN

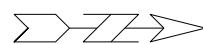
WATER SYSTEM IMPROVEMENTS
APPROVED BY:

[Signature] 4/17/13
Principal Engineer Date

WATER DESIGN
APPROVED BY:

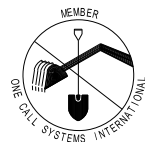

[Signature]
 4-17-13

TO OBTAIN LOCATION OF PARTICIPANTS' UNDERGROUND FACILITIES BEFORE YOU DIG IN WISCONSIN



CALL DIGGERS HOTLINE TOLL FREE
811 OR 1-800-242-8511
FAX: A-LOCATE 1-800-338-3860
TDD (FOR HEARING IMPAIRED) 1-800-542-2289

WIS. STATUTE 182.0175 (1974) REQUIRES MIN. OF 3 WORK DAYS NOTICE BEFORE YOU EXCAVATE.



0709-211-0206-1
CASTRO COOKS LLC
2500 UNIVERSITY AVE
USE 4-IN VERT. BENDS AROUND EX. 8-IN VALVE (REQ'D)
BY OTHERS

0709-211-0210-2
HUM-WEST WILSON LIMITED PARTNERSHIP
2550 UNIVERSITY AVE

STA: TRANSITION TO HDPE TO IN HDPE INSTALLATION
BY OTHERS

STA: 8-INx4-IN TEE IN 8-IN VALVE TO IN HDPE HOTEL
BY OTHERS

PROVIDE AT LEAST 36-IN CLEARANCE AT 36-IN MMSD SAN X-ING (4-FT SHOWN)

CAMPUS DRIVE BRIDGE OVERPASS CLEARANCE = 14'-9"

SEE SPECIAL PROVISIONS FOR WORK NEAR ATC 69kV BURRIED T-LINES

SEE SPECIAL PROVISIONS FOR WORK NEAR WSOR RAILROAD TRACKS. 10-DAY NOTICE AND RAILROAD FLAGGER REQ'D

STA: 6-INx6-IN TAPPING SLEEVE W/ 6-IN TAPPING VALVE (MWU) CUT OFF EX. 6-IN WM

STA: 8-INx6-IN TEE W/ MJ PLUG
BY OTHERS

0709-211-1853-1
USA VETERANS ADMINISTRATION
MIDDLETON MEMORIAL VETS
2500 UNIVERSITY AVE

STA: 8-INx8-IN TEE
BY OTHERS

STA: 8-IN 22.5° BEND TO 8-IN 11.25° BEND

STA: 8-IN 45° BEND

DEFLECT (AS REQ'D)

STA: 8-IN VALVE

STA: 8-INx8-IN TEE

STA: 8-IN VALVE

ABANDON EX. 6-IN FPL MAIN

STA: 6-IN VALVE

STA: 6-INx6-IN TEE

STA: 8-IN 22.5° BEND

STA: 8-IN 90° BEND

STA: 8-IN VALVE

STA: 8-INx8-IN TEE

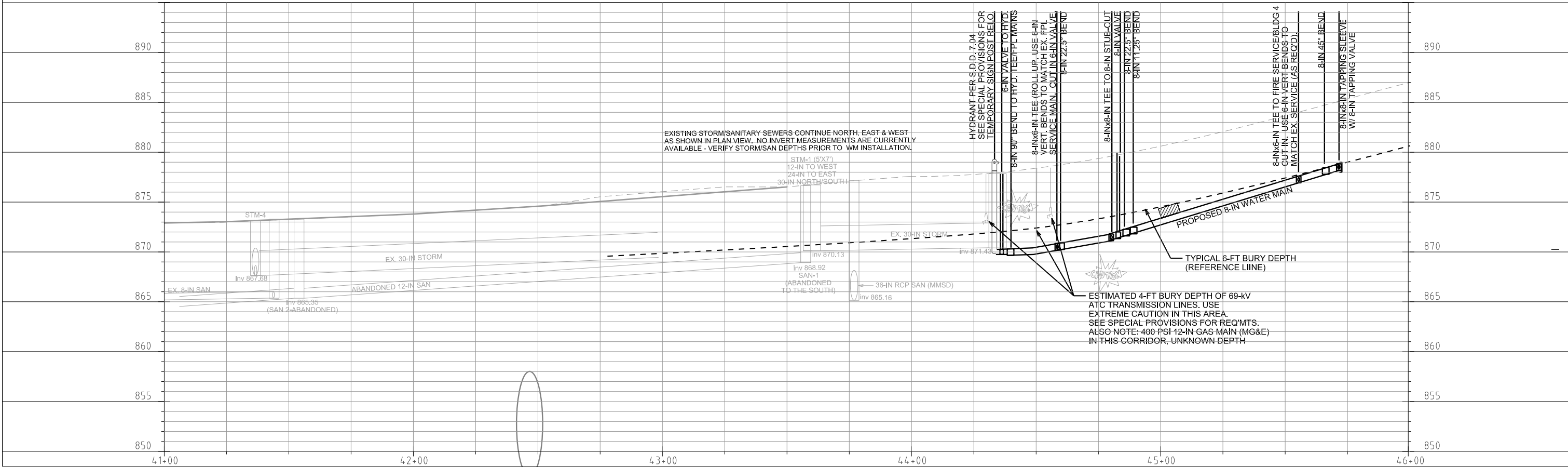
STA: 8-IN VALVE

STA: 8-INx8-IN TAPPING SLEEVE W/ 8-IN TAPPING VALVE (MWU)

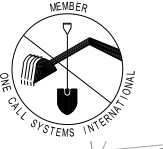
HIGHLAND AVE WATER MAIN REPLACEMENT PROJECT: 53W1615 / CONTRACT: 7071 SHEET NO. W-1
WATER PLAN AND PROFILE PREPARED BY: ARW
HIGHLAND AVE CITY OF MADISON

0709-164-0097-5
US GOV'T - USDA FOREST SERV
FOREST PRODUCTS LAB
1 GIFFORD PINCHOT DRIVE

DISCLAIMER NOTE:
UTILITY LOCATIONS SHOWN ARE APPROXIMATE ONLY. IT SHALL BE THE CONTRACTOR'S RESPONSIBILITY TO DETERMINE THE EXACT HORIZONTAL AND VERTICAL LOCATION OF ALL EXISTING UNDERGROUND AND OVERHEAD UTILITIES PRIOR TO COMMENCING WORK.



TO OBTAIN LOCATION OF PARTICIPANTS' UNDERGROUND FACILITIES BEFORE YOU DIG IN WISCONSIN
 CALL DIGGERS HOTLINE TOLL FREE
 811 OR 1-800-242-8511
 FAX-A-LOCATE 1-800-338-3860
 TDD (FOR HEARING IMPAIRED) 1-800-542-2289
 WIS. STATUTE 182.0175 (1974) REQUIRES MIN. OF 3 WORK DAYS NOTICE BEFORE YOU EXCAVATE.



SEE SPECIAL PROVISIONS FOR WORK NEAR ATC-69KV BURRIED T-LINES
 SEE SPECIAL PROVISIONS FOR WORK NEAR WSOR RAILROAD TRACKS. 10-DAY NOTICE AND RAILROAD FLAGGER REQ'D

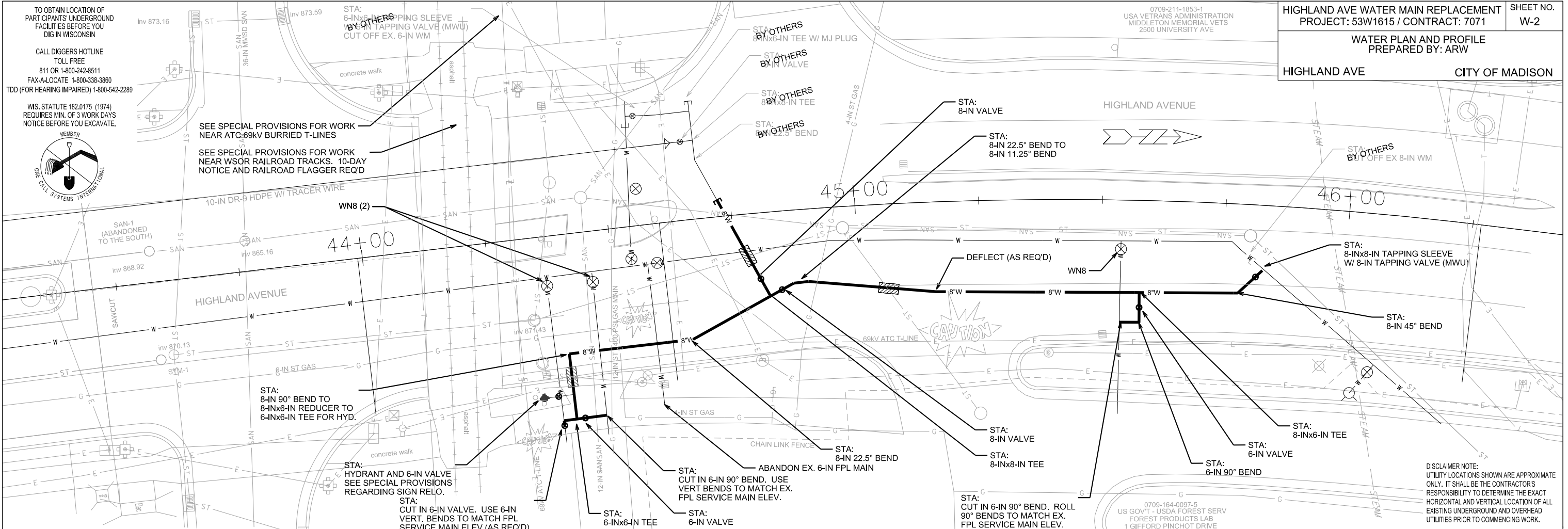
0709-211-1853-1
 USA VETERANS ADMINISTRATION
 MIDDLETON MEMORIAL VETS
 2500 UNIVERSITY AVE

HIGHLAND AVE WATER MAIN REPLACEMENT PROJECT: 53W1615 / CONTRACT: 7071 SHEET NO. W-2

WATER PLAN AND PROFILE PREPARED BY: ARW
 HIGHLAND AVE CITY OF MADISON

PLOT SCALE: _____
 REV. DATE: _____

ORIGINATOR: CITY OF MADISON, STREETS DIVISION



DISCLAIMER NOTE:
 UTILITY LOCATIONS SHOWN ARE APPROXIMATE ONLY. IT SHALL BE THE CONTRACTOR'S RESPONSIBILITY TO DETERMINE THE EXACT HORIZONTAL AND VERTICAL LOCATION OF ALL EXISTING UNDERGROUND AND OVERHEAD UTILITIES PRIOR TO COMMENCING WORK.

