

SHEETS

L-1	ALDO LEOPOLD PARK
L-2 - L-4	BRAYTON PARKING LOT
L-5	BRITTINGHAM PARK
L-6	CENTRAL PARK
L-7	ELVER PARK
L-8	HOYT PARK
L-9	JAMES MADISON PARK
L-10	MCCLELLAN PARK
L-11	MOHICAN PASS TRIANGLE
L-12 - L14	ODANA GOLF COURSE
L-15 - L-16	REINDAHL PARK
L-17 - L-18	RENNEBOHM PARK
L-19	TENNEY PARK
L-20	WALNUT GROVE PARK
L-21 - L-23	WARNER PARK
L-24	WATER UTILITY WELL 26
L-25	WATER UTILITY WELL 28
L-26	WATER UTILITY WELL 29
L-27	WESTPORT MEADOWS PARK
L-28	YAHARA PLACE PARK

2014 PARK DIVISION, PARKING &
WATER UTILITY LANDSCAPING
CITY OF MADISON PARKS DIVISION
DEPARTMENT OF PUBLIC WORKS

City of Madison
Department of Public Works
PARKS DIVISION

City-County Building, Suite 104
210 Martin Luther King, Jr. Blvd.
PO Box 2987
Madison, WI 53701-2987

play
**MADISON
PARKS**

PROJECT: *2014 PARK
DIVISION,
PARKING &
WATER UTILITY
LANDSCAPING*

Although every effort has been made in preparing these plans and checking them for accuracy, the contractor and subcontractors must check all details and dimensions of their trade and be responsible for the same.

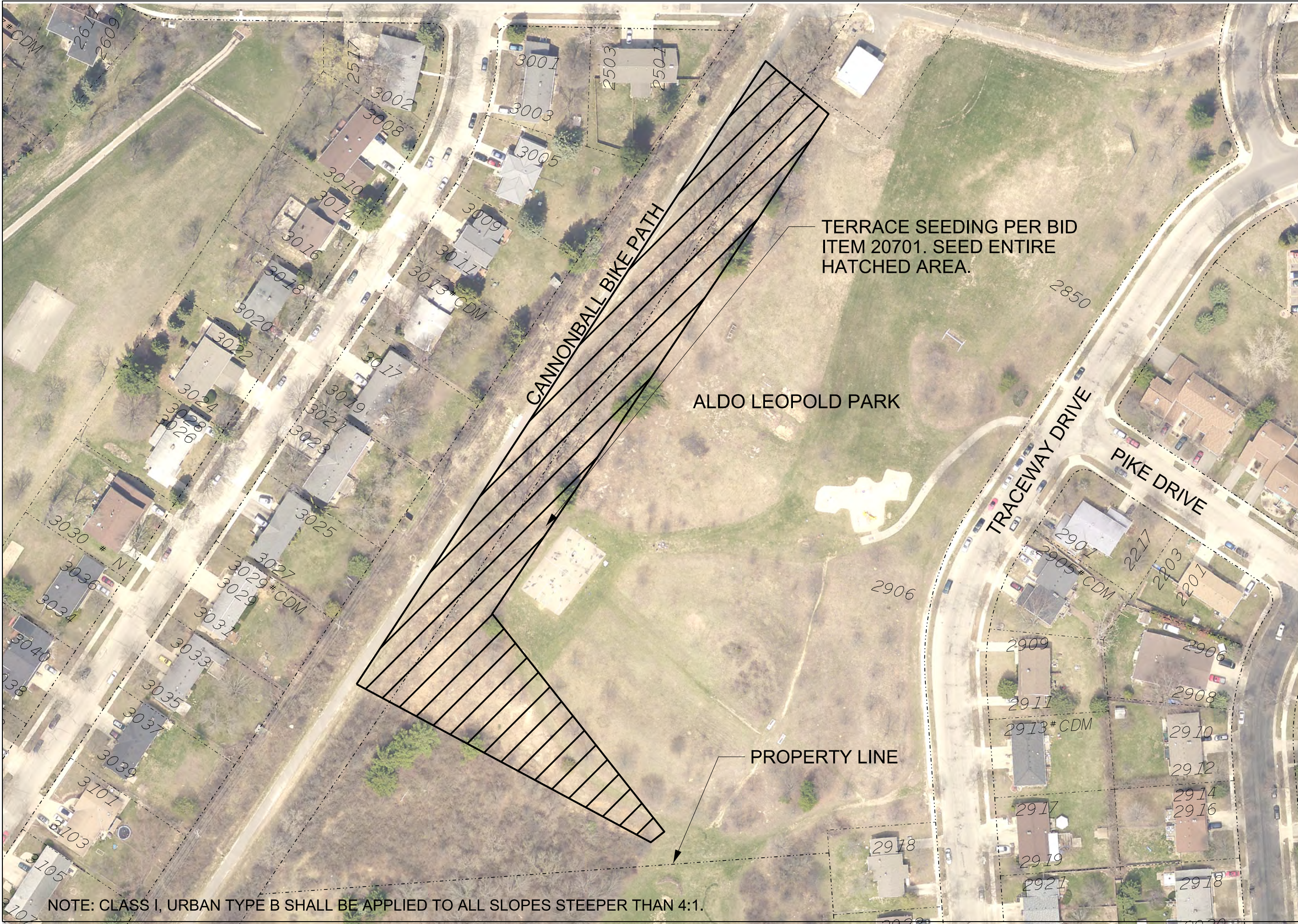
ITEM	DATE
Drawn by: SCL	01-21-2014
Approved by:	XX-XX-XXXX

PUBLIC WORKS PROJECT #:
7264

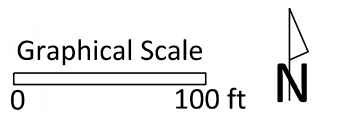
SHEET TITLE:
LANDSCAPE PLANS

SHEET NUMBER:

COVER SHEET



City of Madison
Department of Public Works
PARKS DIVISION
City-County Building, Suite 104
210 Martin Luther King, Jr. Blvd.
PO Box 2987
Madison, WI 53701-2987
play
MADISON
PARKS



PROJECT: **2014 PARK
DIVISION,
PARKING &
WATER UTILITY
LANDSCAPING**

**ALDO LEOPOLD
PARK
2906 TRACEWAY DR
MADISON, WI 53713**

Although every effort has been made in preparing these plans and checking them for accuracy, the contractor and subcontractors must check all details and dimensions of their trade and be responsible for the same.

ITEM	DATE
Drawn by:	XX-XX-XXXX
Approved by:	XX-XX-XXXX

PUBLIC WORKS PROJECT #:
7264

SHEET TITLE:
LANDSCAPE PLAN

SHEET NUMBER:
L-1



NOTE: THE CONTRACTOR SHALL USE CAUTION AND HAND DIG NEAR ELECTRICAL UTILITIES. ELECTRICAL LINE IS BURIED APPROXIMATELY 24" DEEP.

City of Madison
Department of Public Works
PARKS DIVISION

City-County Building, Suite 104
210 Martin Luther King, Jr. Blvd.
PO Box 2987
Madison, WI 53701-2987

play
**MADISON
PARKS**

Graphical Scale
0 30 ft



PROJECT: **2014 PARK
DIVISION,
PARKING &
WATER UTILITY
LANDSCAPING**

**BRAYTON
PARKING LOT
1 S BUTLER ST
MADISON, WI 53703**

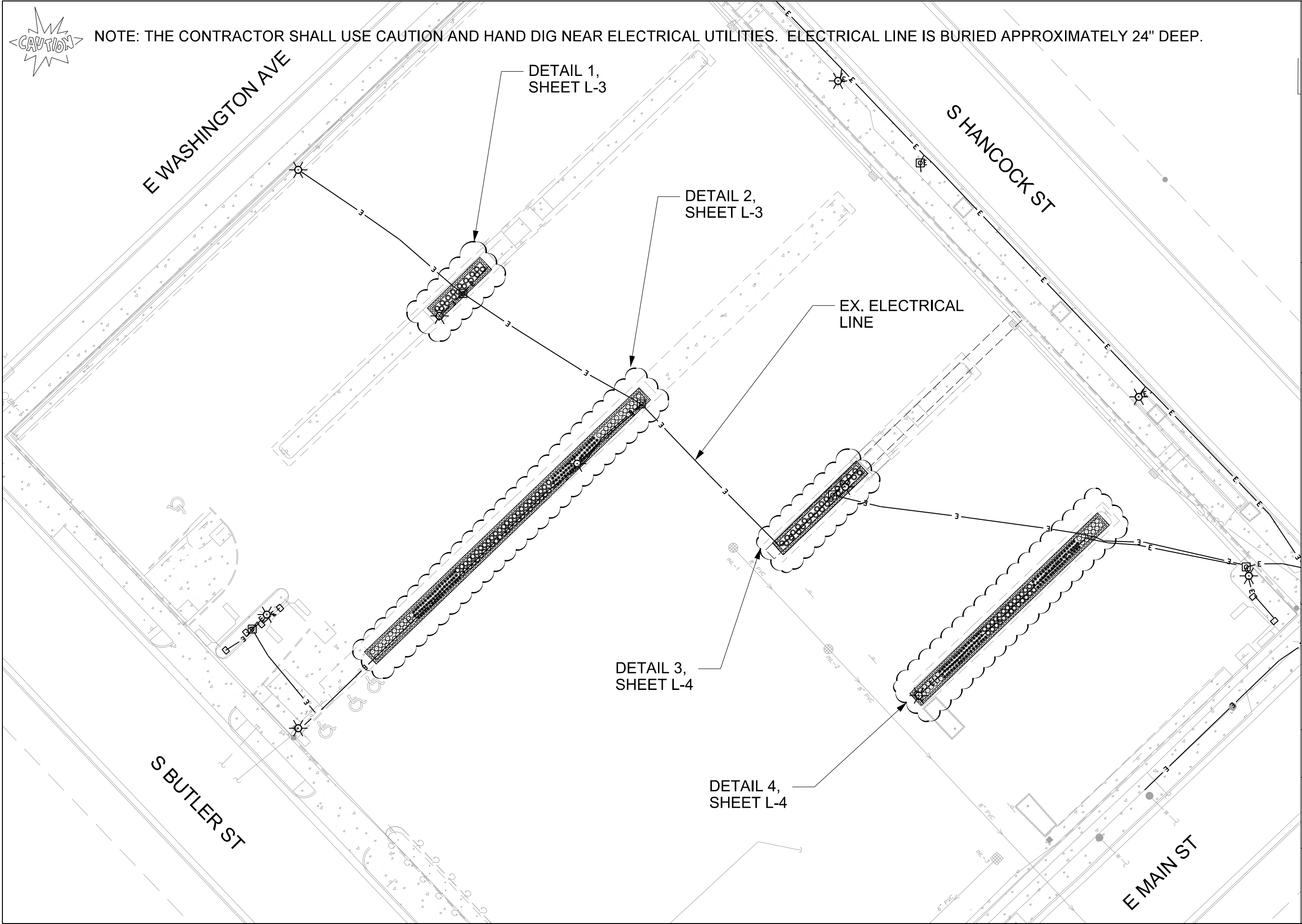
Although every effort has been made in preparing these plans and checking them for accuracy, the contractor and subcontractors must check all details and dimensions of their trade and be responsible for the same.

ITEM	DATE
Drawn by:	XX-XX-XXXX
Approved by:	XX-XX-XXXX

PUBLIC WORKS PROJECT #:
7264

SHEET TITLE:
SITE PLAN

SHEET NUMBER:
L-2



City of Madison
Department of Public Works
PARKS DIVISION

City-County Building, Suite 104
210 Martin Luther King, Jr. Blvd.
PO Box 2987
Madison, WI 53701-2987

play
**MADISON
PARKS**

Graphical Scale
0 30 ft
N

PROJECT: **2014 PARK
DIVISION,
PARKING &
WATER UTILITY
LANDSCAPING**

**BRAYTON
PARKING LOT
1 S BUTLER ST
MADISON, WI 53703**

Although every effort has been made in preparing these plans and checking them for accuracy, the contractor and subcontractors must check all details and dimensions of their trade and be responsible for the same.

ITEM	DATE
Drawn by:	XX-XX-XXXX
Approved by:	XX-XX-XXXX

PUBLIC WORKS PROJECT #:
7264

SHEET TITLE:
SITE PLAN

SHEET NUMBER:
L-3

EX. ELECTRICAL HAND HOLE

(23) CALAMINTHA NEPETA 'WHITE CLOUD'

(50) ALLIUM 'SUMMER BEAUTY'

EX. LIGHT

1' WIDE 7 INCH ARCHITECTURAL CONCRETE
SIDEWALK PER BID ITEM 30304

(50) SCHIZACHYRIUM SCOPARIUM 'THE BLUES'

EX. ELECTRICAL LINE

(55) ALLIUM 'SUMMER BEAUTY'

(24) CALAMINTHA NEPETA 'WHITE CLOUD'

EX. LIGHT

(16) SCHIZACHYRIUM
SCOPARIUM 'THE BLUES'

EX. ELECTRICAL HAND
HOLE
EX. ELECTRICAL

1' WIDE 7 INCH
ARCHITECTURAL
CONCRETE SIDEWALK PER
BID ITEM 30304

1
DETAIL 1

L-3

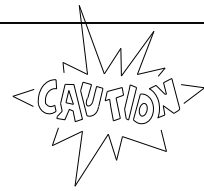


NOTES:
1. THE CONTRACTOR SHALL USE CAUTION AND HAND DIG NEAR ELECTRICAL UTILITIES. ELECTRICAL LINE IS BURIED APPROXIMATELY 24" DEEP.
2. POUR ARCHITECTURAL CONCRETE UP TO EDGE OF EXISTING STRUCTURES.

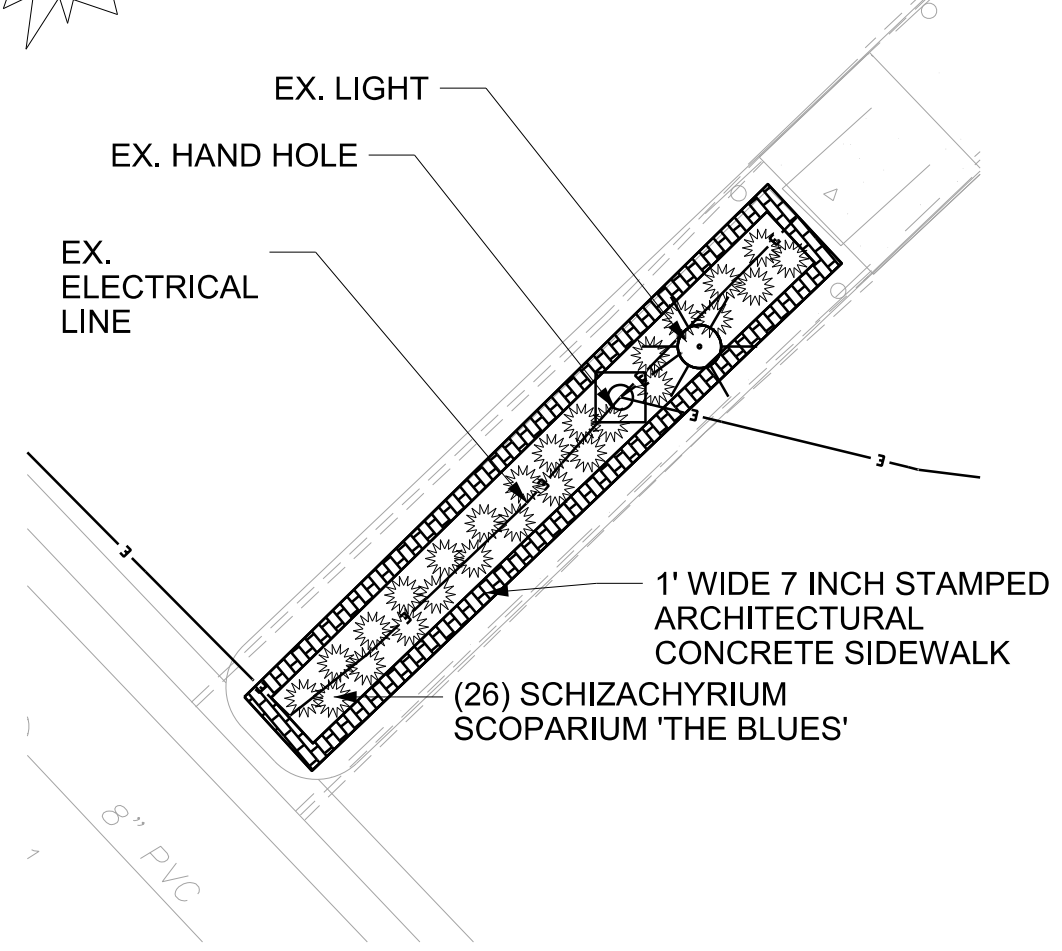
2
DETAIL 2

L-3

PLANT SCHEDULE				
Item				
Plants				
Botanical Name	Common Name	Size	Container	Quantity
Perennials and Grasses				
Allium 'Summer Beauty'	Summer Beauty Allium	#1	Container	105
Calamintha nepeta 'White Cloud'	White Cloud Catmint	#1	Container	47
Schizachyrium scoparium 'The Blues'	The Blues Little Bluestem	#1	Container	66

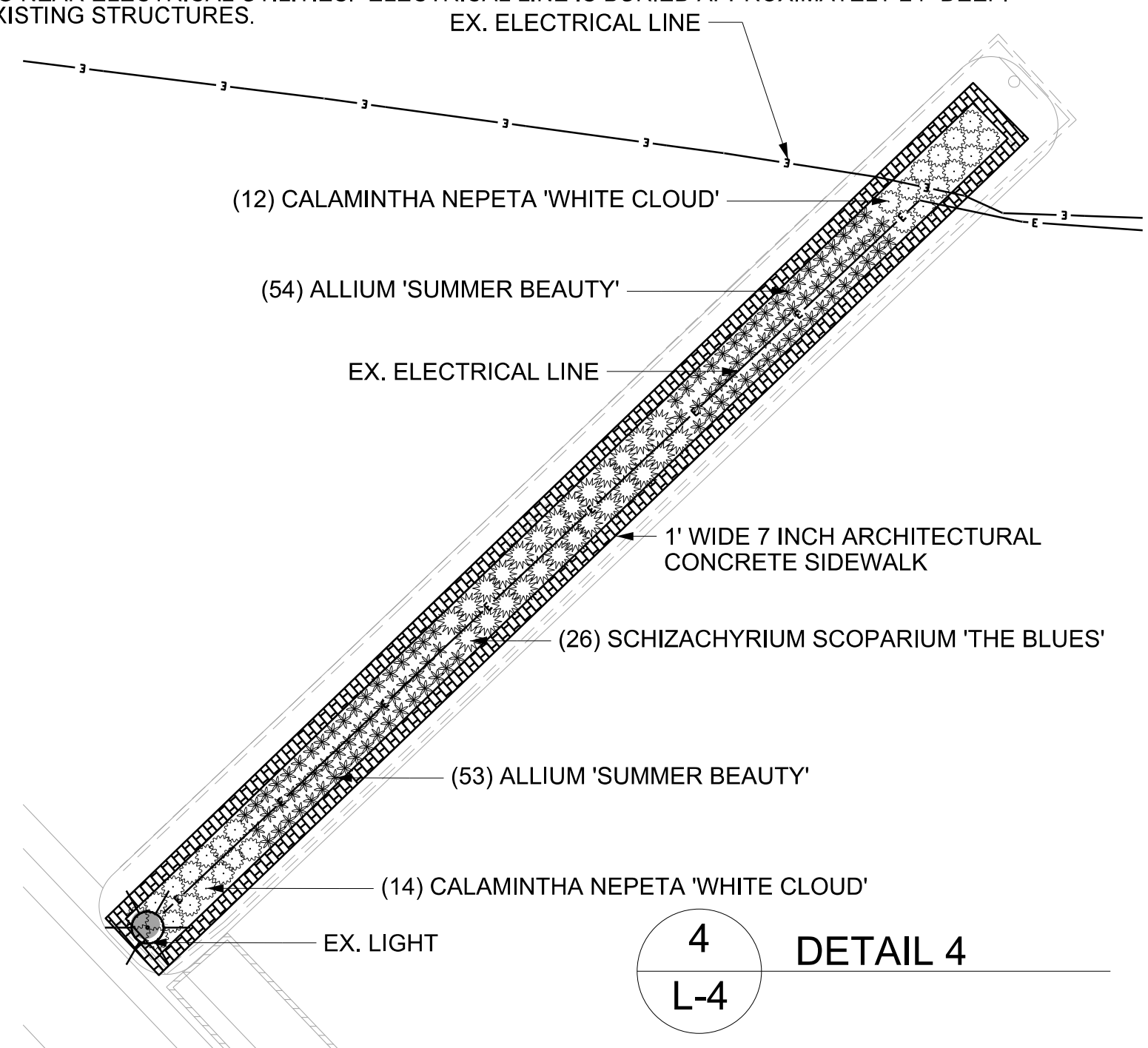


NOTES:
1. THE CONTRACTOR SHALL USE CAUTION AND HAND DIG NEAR ELECTRICAL UTILITIES. ELECTRICAL LINE IS BURIED APPROXIMATELY 24" DEEP.
2. POUR ARCHITECTURAL CONCRETE UP TO EDGE OF EXISTING STRUCTURES.



3
L-4

DETAIL 3



4
L-4

DETAIL 4

PLANT SCHEDULE				
Item				
Plants				
Botanical Name	Common Name	Size	Container	Quantity
Perennials and Grasses				
Allium 'Summer Beauty'	Summer Beauty Allium	#1	Container	107
Calamintha nepeta 'White Cloud'	White Cloud Catmint	#1	Container	26
Schizachyrium scoparium 'The Blues'	The Blues Little Bluestem	#1	Container	52

City of Madison
Department of Public Works
PARKS DIVISION
City-County Building, Suite 104
210 Martin Luther King, Jr. Blvd.
PO Box 2987
Madison, WI 53701-2987

play
MADISON PARKS

Graphical Scale
0 10 ft

N

PROJECT: **2014 PARK DIVISION, PARKING & WATER UTILITY LANDSCAPING**

**BRAYTON PARKING LOT
1 S BUTLER ST
MADISON, WI 53703**

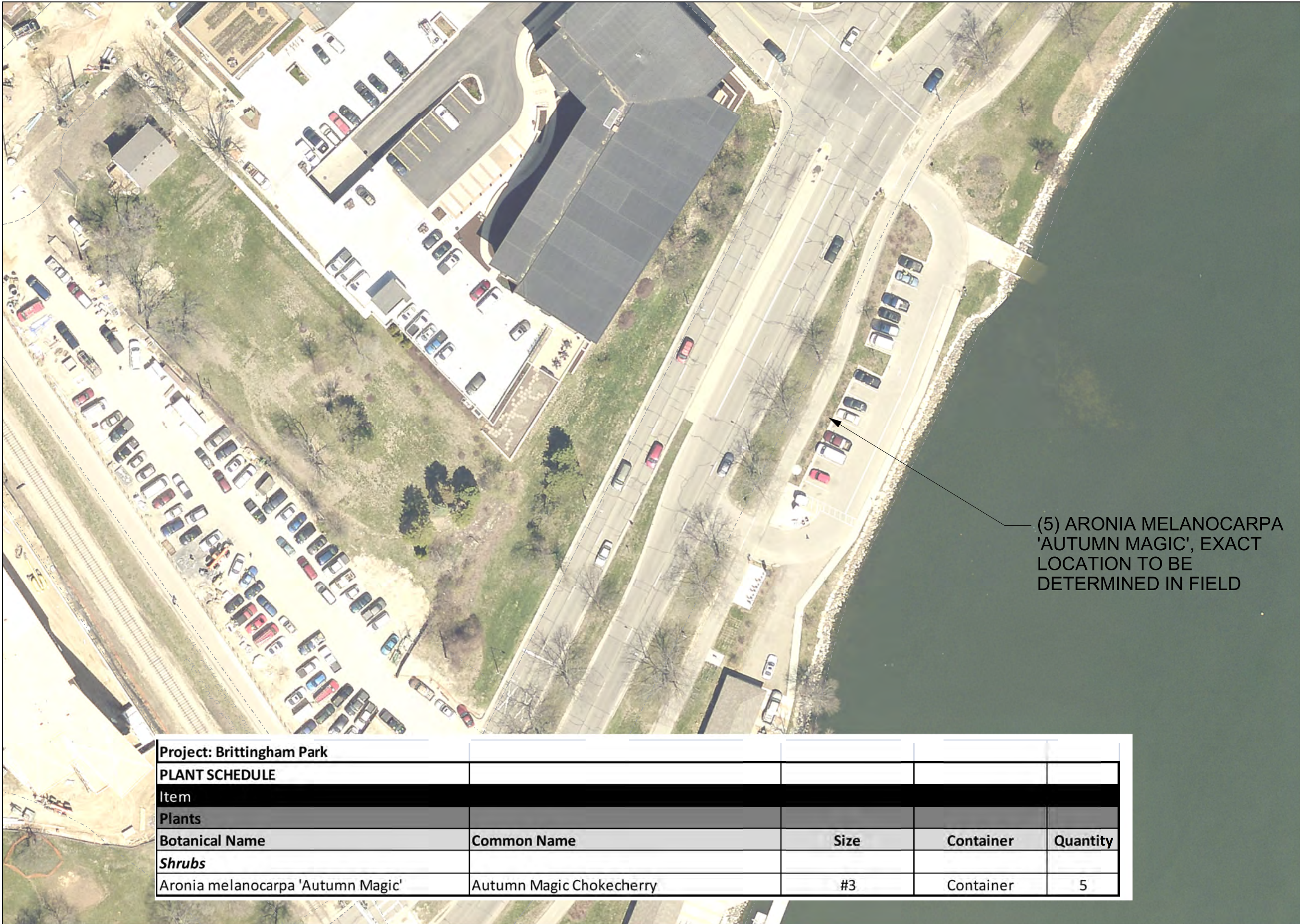
Although every effort has been made in preparing these plans and checking them for accuracy, the contractor and subcontractors must check all details and dimensions of their trade and be responsible for the same.

ITEM	DATE
Drawn by:	XX-XX-XXXX
Approved by:	XX-XX-XXXX

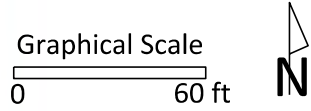
PUBLIC WORKS PROJECT #:
7264

SHEET TITLE:
SITE PLAN

SHEET NUMBER:
L-4



City of Madison
Department of Public Works
PARKS DIVISION
City-County Building, Suite 104
210 Martin Luther King, Jr. Blvd.
PO Box 2987
Madison, WI 53701-2987
play
**MADISON
PARKS**



PROJECT: *2014 PARK
DIVISION,
PARKING &
WATER UTILITY
LANDSCAPING*

*BRITTINGHAM PARK
829 W. WASHINGTON
MADISON, WI 53715*

(5) ARONIA MELANOCARPA
'AUTUMN MAGIC', EXACT
LOCATION TO BE
DETERMINED IN FIELD

Although every effort has been made in preparing these plans and checking them for accuracy, the contractor and subcontractors must check all details and dimensions of their trade and be responsible for the same.

ITEM	DATE
Drawn by:	XX-XX-XXXX
Approved by:	XX-XX-XXXX

PUBLIC WORKS PROJECT #:
7264

SHEET TITLE:
LANDSCAPE PLAN

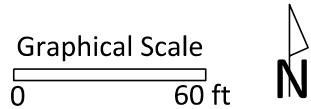
SHEET NUMBER:
L-5

Project: Brittingham Park				
PLANT SCHEDULE				
Item				
Plants				
Botanical Name	Common Name	Size	Container	Quantity
<i>Shrubs</i>				
Aronia melanocarpa 'Autumn Magic'	Autumn Magic Chokecherry	#3	Container	5

NOTE:
1.) SEVERAL UTILITIES EXIST NEAR PROPOSED PLANTING LOCATIONS INCLUDING IRRIGATION, ELECTRICAL, SANITARY AND STORM SEWER. UTILITY LOCATIONS SHOWN ON PLAN ARE APPROXIMATE AND THE CONTRACTOR SHALL CALL DIGGERS HOTLINE TO LOCATE AS BUILT PRIOR TO ENGINEER MARKING TREE LOCATIONS.
2.) VEHICULAR ACCESS WILL BE RESTRICTED. SITE MUST BE ACCESSED WITH SMALL, LIGHTWEIGHT VEHICLES. ANY DAMAGE TO EXISTING SOD MUST BE REPAIRED TO ORIGINAL CONDITIONS AT THE EXPENSE OF THE CONTRACTOR.

(20) ULMUS X 'FRONTIER'

City of Madison
Department of Public Works
PARKS DIVISION
*City-County Building, Suite 104
210 Martin Luther King, Jr. Blvd.
PO Box 2987
Madison, WI 53701-2987*
**play
MADISON
PARKS**



PROJECT: **2014 PARK
DIVISION,
PARKING &
WATER UTILITY
LANDSCAPING**

**CENTRAL PARK
201 S INGERSOLL ST.
MADISON, WI 53703**

Although every effort has been made in preparing these plans and checking them for accuracy, the contractor and subcontractors must check all details and dimensions of their trade and be responsible for the same.

ITEM	DATE
Drawn by:	XX-XX-XXXX
Approved by:	XX-XX-XXXX

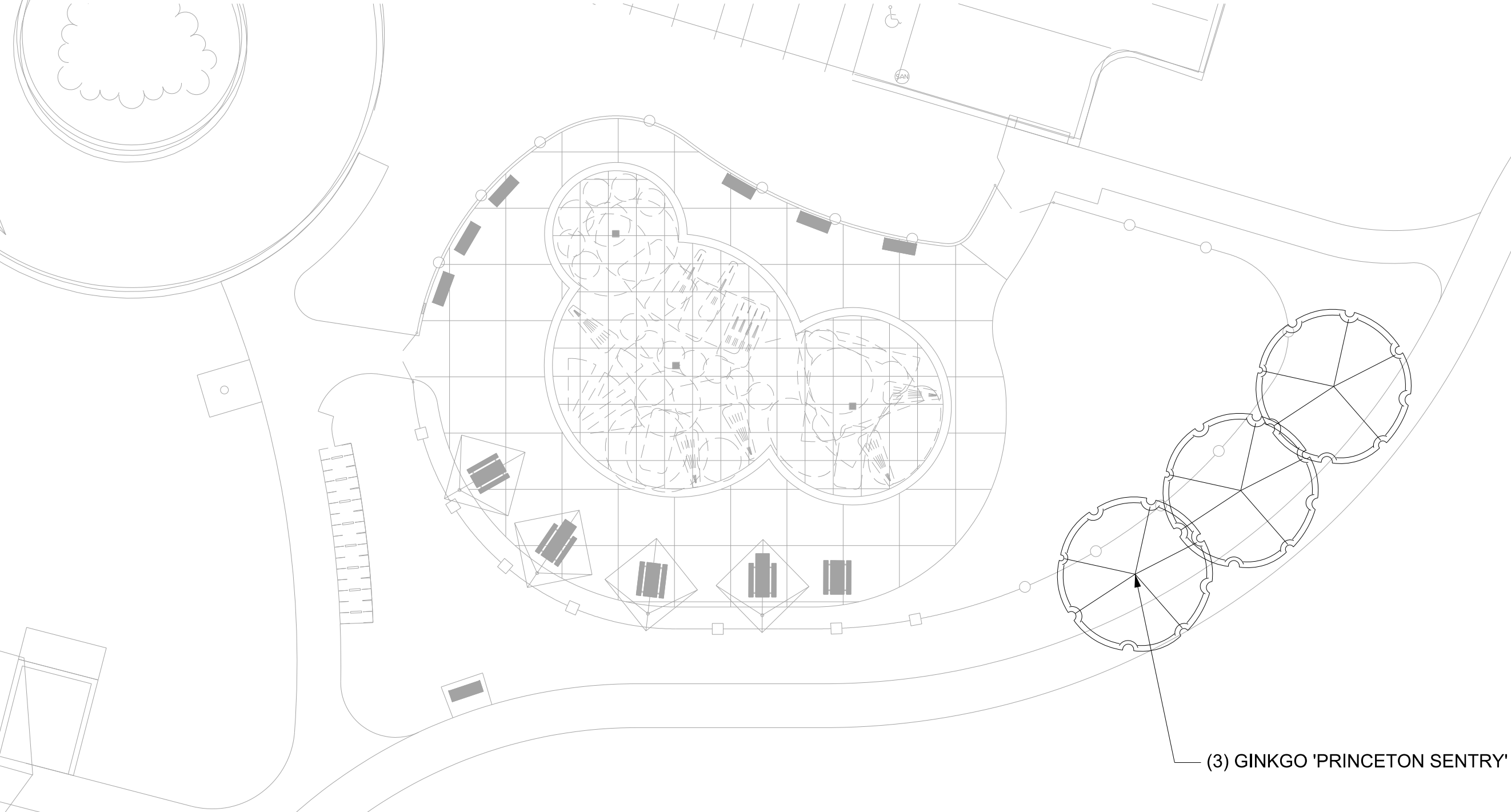
PUBLIC WORKS PROJECT #:
7264

SHEET TITLE:
LANDSCAPE PLAN

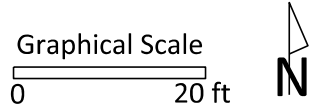
SHEET NUMBER:
L-6

PLANT SCHEDULE				
Item				
Plants				
Botanical Name	Common Name	Size	Container	Quantity
Ornamental Trees				
Ulmus x 'Frontier'	Frontier Elm	1 1/2" Cal.	B&B	20

PLANT SCHEDULE				
Item				
Plants				
Botanical Name	Common Name	Size	Container	Quantity
<i>Trees</i>				
Ginkgo 'Princeton Sentry'	Princeton Sentry Ginkgo	2" Cal.	B&B	3



City of Madison
Department of Public Works
PARKS DIVISION
*City-County Building, Suite 104
210 Martin Luther King, Jr. Blvd.
PO Box 2987
Madison, WI 53701-2987*
play
MADISON
PARKS



PROJECT: **2014 PARK
DIVISION,
PARKING &
WATER UTILITY
LANDSCAPING**

**ELVER PARK
SPLASH PAD
1250 MCKENNA BLVD
MADISON, WI 53719**

Although every effort has been made in preparing these plans and checking them for accuracy, the contractor and subcontractors must check all details and dimensions of their trade and be responsible for the same.

ITEM	DATE
Drawn by:	XX-XX-XXXX
Approved by:	XX-XX-XXXX

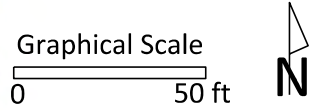
PUBLIC WORKS PROJECT #:
7264

SHEET TITLE:
LANDSCAPE PLAN

SHEET NUMBER:
L-7



City of Madison
Department of Public Works
PARKS DIVISION
City-County Building, Suite 104
210 Martin Luther King, Jr. Blvd.
PO Box 2987
Madison, WI 53701-2987
play
MADISON
PARKS



PROJECT: **2014 PARK
DIVISION,
PARKING &
WATER UTILITY
LANDSCAPING**

**HOYT PARK
3902 REGENT ST
MADISON, WI 53705**

Although every effort has been made in preparing these plans and checking them for accuracy, the contractor and subcontractors must check all details and dimensions of their trade and be responsible for the same.

ITEM	DATE
Drawn by:	XX-XX-XXXX
Approved by:	XX-XX-XXXX

PUBLIC WORKS PROJECT #:
7264

SHEET TITLE:
LANDSCAPE PLAN


SHEET NUMBER:
L-8

PLANT SCHEDULE				
Item				
Plants				
Botanical Name	Common Name	Size	Container	Quantity
Ornamental Trees				
Amelanchier arborera - multistem	Serviceberry	5' Ht.	Container/B&B	2

City-County Building, Suite 104
210 Martin Luther King, Jr. Blvd.
PO Box 2987
Madison, WI 53701-2987

play
**MADISON
PARKS**

Graphical Scale



PROJECT: *2014 PARK
DIVISION,
PARKING &
WATER UTILITY
LANDSCAPING*

*JAMES MADISON PARK
GATES OF HEAVEN
302 E GORHAM
MADISON, WI 53706*

Although every effort has been made in preparing these plans and checking them for accuracy, the contractor and subcontractors must check all details and dimensions of their trade and be responsible for the same.

ITEM	DATE
<i>Drawn by:</i>	<i>XX-XX-XXXX</i>
<i>Approved by:</i>	<i>XX-XX-XXXX</i>

PUBLIC WORKS PROJECT #:
7264

SHEET TITLE:

LANDSCAPE PLAN

SHEET NUMBER:

L-9

SHOVEL EDGE ENTIRE LANDSCAPE
BED (INCLUDING EXISTING AND
PROPOSED)

(31) EPIMEDIUM GRANDIFLORUM
'LILAFEE'

(7) ASTILBE 'BRIDAL VEIL'

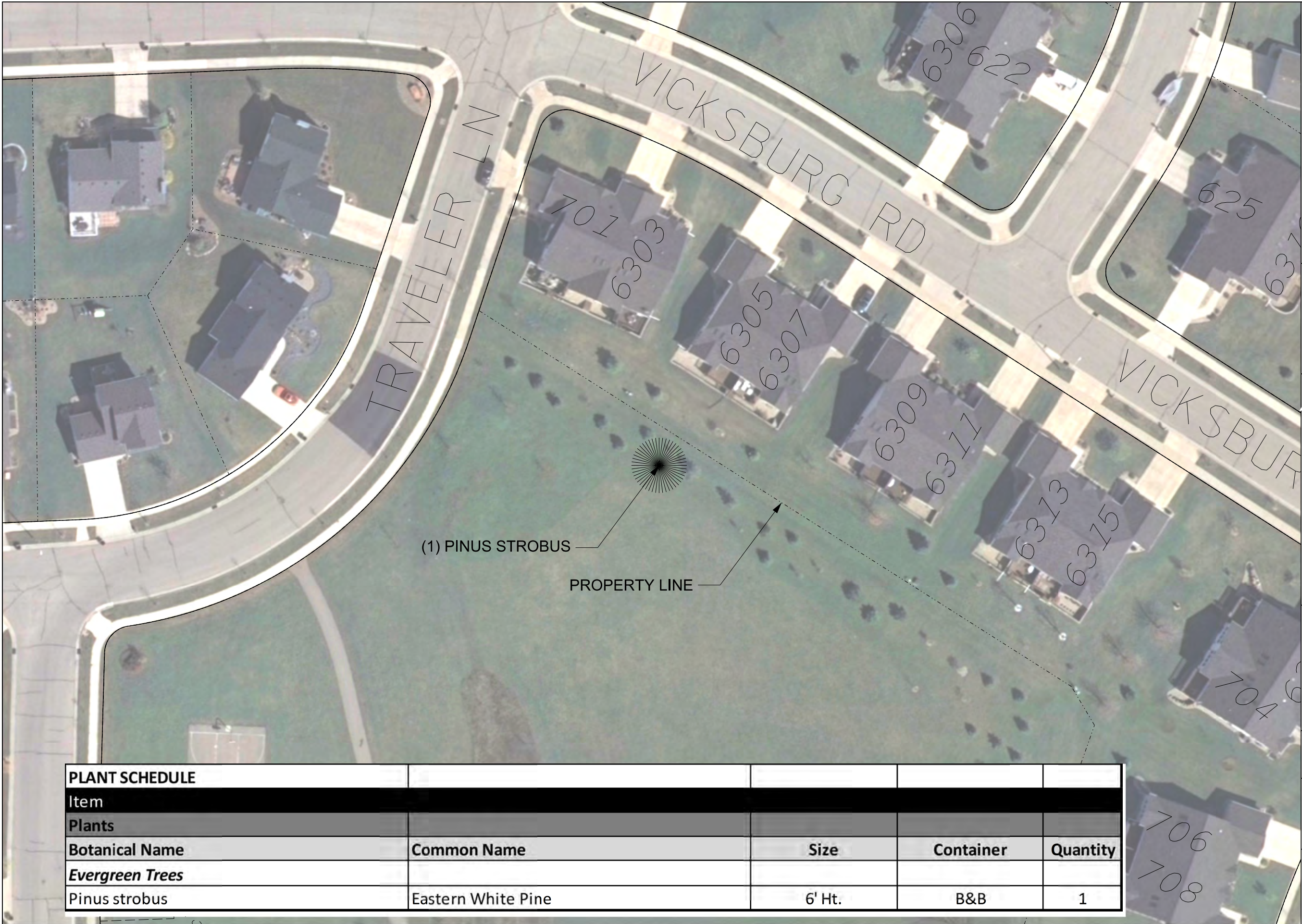
EX. LANDSCAPE BED

EX. STAIRWELL

EX. CONCRETE

EX. GATES OF HEAVEN SYNAGOGUE

PLANT SCHEDULE				
Item				
Plants				
Botanical Name	Common Name	Size	Container	Quantity
<i>Perennials</i>				
Astilbe 'Bridal Veil'	Bridal Veil Astilbe	#1	Container	7
Epimedium grandiflorum 'Lilafee'	Lily Fairy Barrenwort	#1	Container	31



City of Madison
Department of Public Works
PARKS DIVISION
*City-County Building, Suite 104
210 Martin Luther King, Jr. Blvd.
PO Box 2987
Madison, WI 53701-2987*

**play
MADISON
PARKS**

Graphical Scale
0 50 ft

N

PROJECT: **2014 PARK
DIVISION,
PARKING &
WATER UTILITY
LANDSCAPING**

**MCCLELLAN PARK
701 MCCLELLAN DRIVE
MADISON, WI 53718**

Although every effort has been made in preparing these plans and checking them for accuracy, the contractor and subcontractors must check all details and dimensions of their trade and be responsible for the same.

ITEM	DATE
Drawn by:	XX-XX-XXXX
Approved by:	XX-XX-XXXX

PUBLIC WORKS PROJECT #:
7264

SHEET TITLE:
LANDSCAPE PLAN

SHEET NUMBER:
L-10

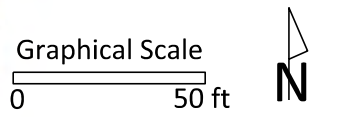
PLANT SCHEDULE				
Item				
Plants				
Botanical Name	Common Name	Size	Container	Quantity
Evergreen Trees				
Pinus strobus	Eastern White Pine	6' Ht.	B&B	1

M:\Maps\parks\Landscaping\2014\2014_Landscape_Contract.dgn

PLANT SCHEDULE				
Item				
Plants				
Botanical Name	Common Name	Size	Container	Quantity
Trees				
Malus 'Pink Spires'	Pink Spires Crabapple	1 1/2" Cal.	B&B	1
Pyrus calleryana 'Autumn Blaze'	Autumn Blaze Callery Pear	1 1/2" Cal.	B&B	1
Quercus bicolor	Swamp White Oak	2" Cal.	B&B	1
Ulmus americana 'New Harmony'	New Harmony Elm	2" Cal.	B&B	1

City of Madison
Department of Public Works
PARKS DIVISION

City-County Building, Suite 104
210 Martin Luther King, Jr. Blvd.
PO Box 2987
Madison, WI 53701-2987



PROJECT: **2014 PARK
DIVISION,
PARKING &
WATER UTILITY
LANDSCAPING**

**MOHICAN PASS
TRIANGLE PARK
1001 MOHICAN PASS
MADISON, WI 53711**

Although every effort has been made in preparing these plans and checking them for accuracy, the contractor and subcontractors must check all details and dimensions of their trade and be responsible for the same.

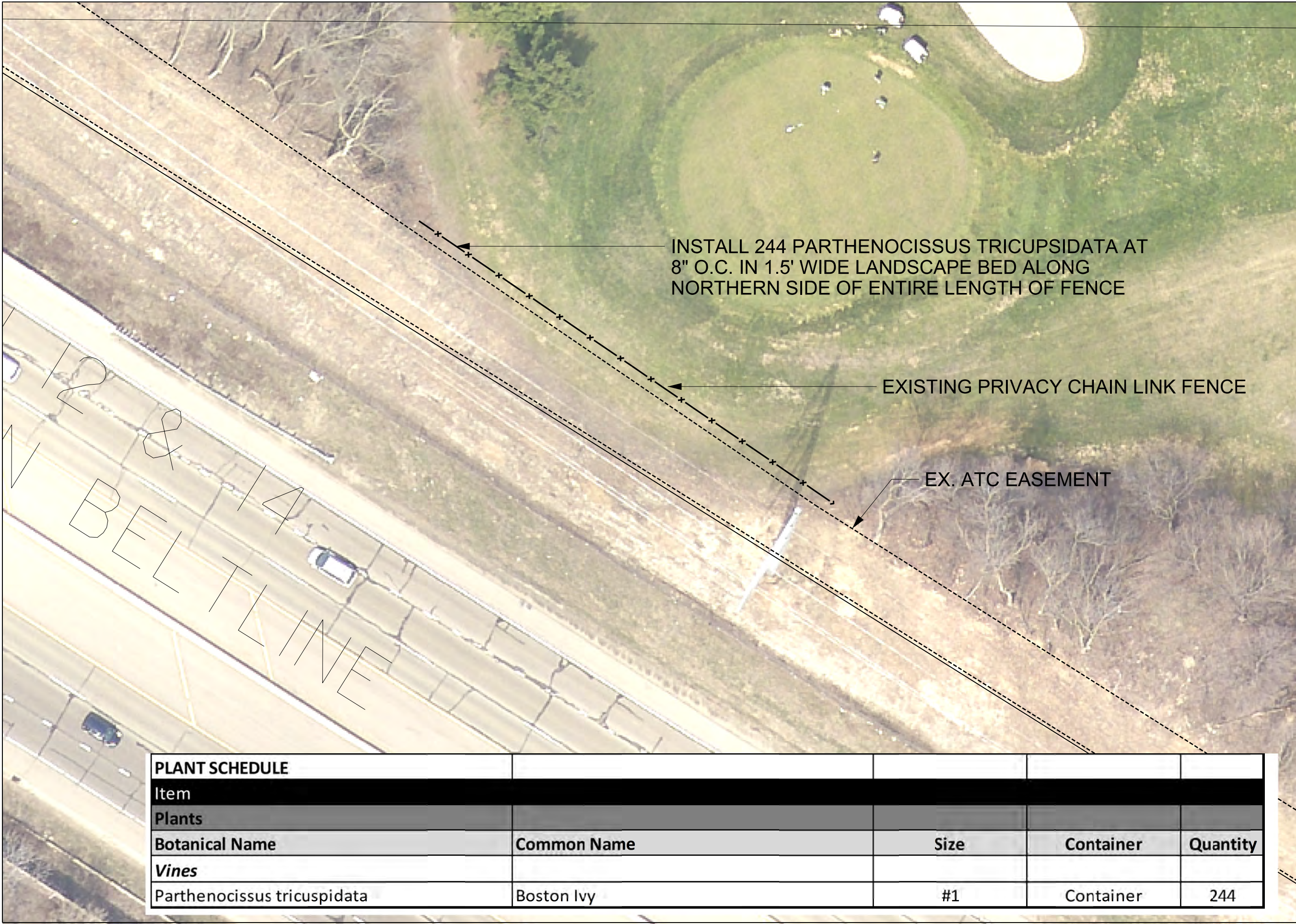
ITEM	DATE
Drawn by:	xx-xx-xxxx
Approved by:	xx-xx-xxxx

PUBLIC WORKS PROJECT #:
7264

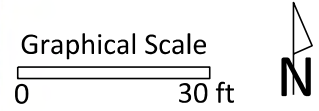
SHEET TITLE:
LANDSCAPE PLAN

SHEET NUMBER:
L-11





City of Madison
Department of Public Works
PARKS DIVISION
City-County Building, Suite 104
210 Martin Luther King, Jr. Blvd.
PO Box 2987
Madison, WI 53701-2987
play
**MADISON
PARKS**



PROJECT: **2014 PARK
DIVISION,
PARKING &
WATER UTILITY
LANDSCAPING**

**ODANA GOLF COURSE
4635 ODANA RD
MADISON, WI 53711**

Although every effort has been made in preparing these plans and checking them for accuracy, the contractor and subcontractors must check all details and dimensions of their trade and be responsible for the same.

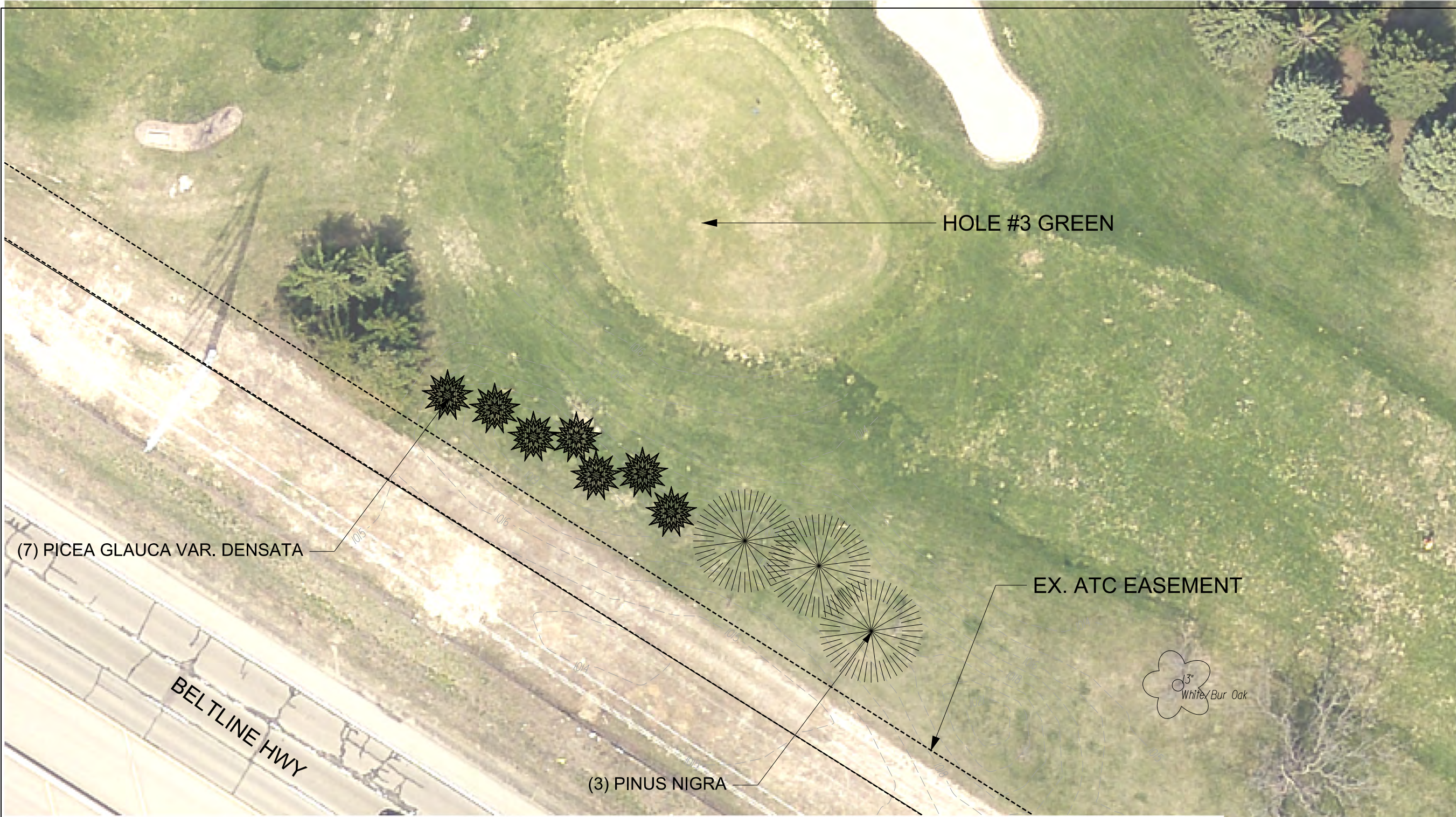
ITEM	DATE
Drawn by:	XX-XX-XXXX
Approved by:	XX-XX-XXXX

PUBLIC WORKS PROJECT #:
7264

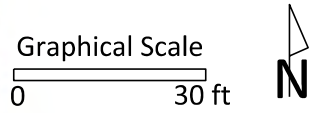
SHEET TITLE:
LANDSCAPE PLAN

SHEET NUMBER:
L-12

PLANT SCHEDULE				
Item				
Plants				
Botanical Name	Common Name	Size	Container	Quantity
Vines				
Parthenocissus tricuspidata	Boston Ivy	#1	Container	244



City of Madison
Department of Public Works
PARKS DIVISION
City-County Building, Suite 104
210 Martin Luther King, Jr. Blvd.
PO Box 2987
Madison, WI 53701-2987
play
MADISON
PARKS



PROJECT: **2014 PARK
DIVISION,
PARKING &
WATER UTILITY
LANDSCAPING**

**ODANA GOLF COURSE
HOLE #3 GREEN
4635 ODANA RD
MADISON, WI 53711**

Although every effort has been made in preparing these plans and checking them for accuracy, the contractor and subcontractors must check all details and dimensions of their trade and be responsible for the same.

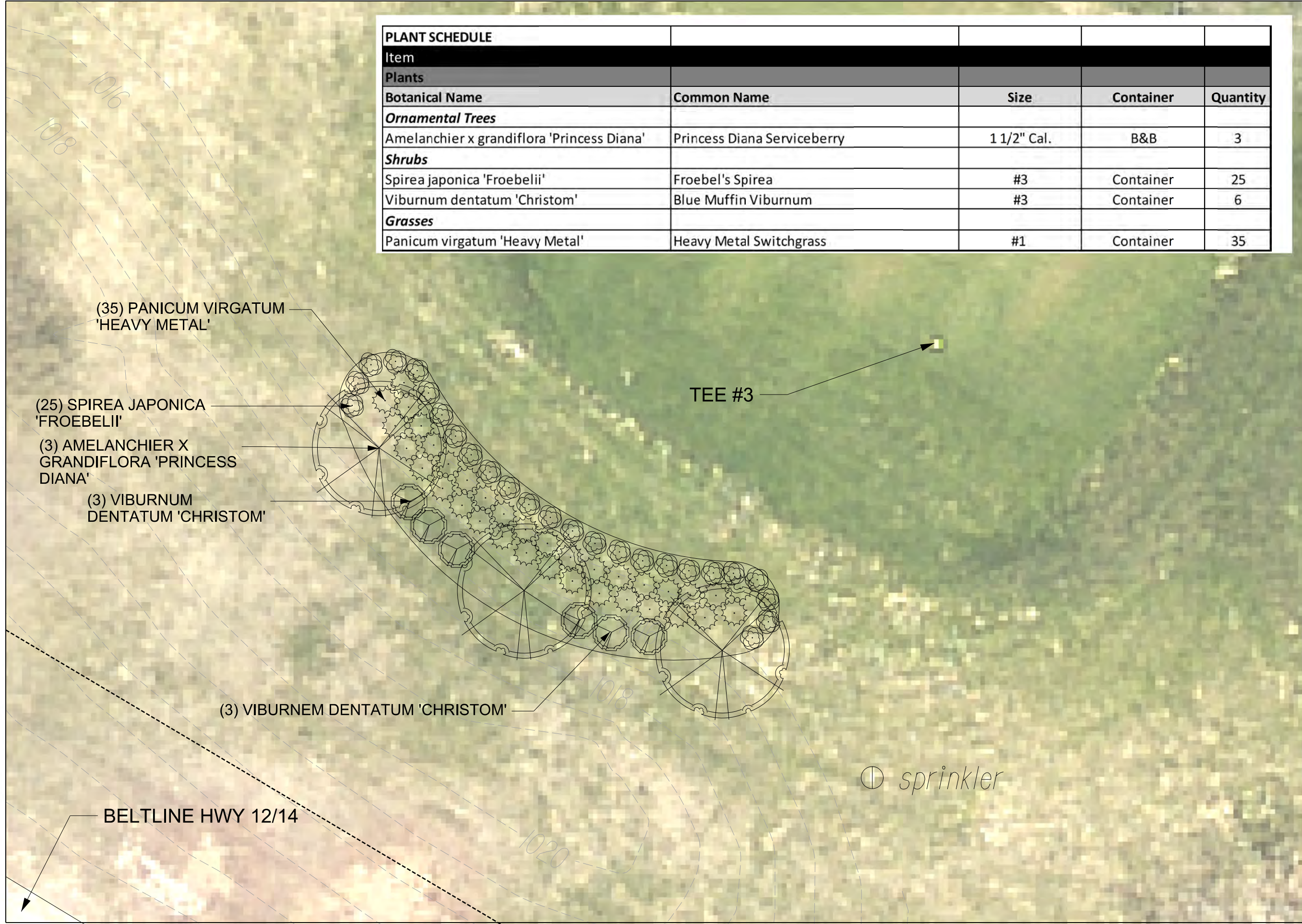
ITEM	DATE
Drawn by:	XX-XX-XXXX
Approved by:	XX-XX-XXXX

PUBLIC WORKS PROJECT #:
7264

SHEET TITLE:
LANDSCAPE PLAN

SHEET NUMBER:
L-13

PLANT SCHEDULE				
Item				
Plants				
Botanical Name	Common Name	Size	Container	Quantity
Evergreen Trees				
Pinus nigra	Austrian Pine	6' Ht.	B&B	3
Picea glauca var. densata	Black Hills Spruce	6' Ht.	B&B	7



PLANT SCHEDULE				
Item				
Plants				
Botanical Name	Common Name	Size	Container	Quantity
Ornamental Trees				
Amelanchier x grandiflora 'Princess Diana'	Princess Diana Serviceberry	1 1/2" Cal.	B&B	3
Shrubs				
Spirea japonica 'Froebelii'	Froebel's Spirea	#3	Container	25
Viburnum dentatum 'Christom'	Blue Muffin Viburnum	#3	Container	6
Grasses				
Panicum virgatum 'Heavy Metal'	Heavy Metal Switchgrass	#1	Container	35

City of Madison
Department of Public Works
PARKS DIVISION
*City-County Building, Suite 104
210 Martin Luther King, Jr. Blvd.
PO Box 2987
Madison, WI 53701-2987*

play
**MADISON
PARKS**

Graphical Scale
0 10 ft

PROJECT: *2014 PARK
DIVISION,
PARKING &
WATER UTILITY
LANDSCAPING*

*ODANA GOLF COURSE
HOLE #3 TEE
4635 ODANA RD
MADISON, WI 53711*

Although every effort has been made in preparing these plans and checking them for accuracy, the contractor and subcontractors must check all details and dimensions of their trade and be responsible for the same.

ITEM	DATE
Drawn by:	XX-XX-XXXX
Approved by:	XX-XX-XXXX

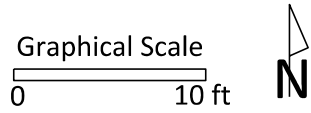
PUBLIC WORKS PROJECT #:
7264

SHEET TITLE:
LANDSCAPE PLAN

SHEET NUMBER:
L-14

PLANT SCHEDULE				
Item				
Plants				
Botanical Name	Common Name	Size	Container	Quantity
Perennials				
Sorghastrum nutans 'Indian Steel'	Indian Steel Indiangrass	#1	Container	10

City of Madison
Department of Public Works
PARKS DIVISION
City-County Building, Suite 104
210 Martin Luther King, Jr. Blvd.
PO Box 2987
Madison, WI 53701-2987
play
MADISON PARKS



PROJECT: **2014 PARK DIVISION,
PARKING &
WATER UTILITY
LANDSCAPING**

**REINDAHL PARK
1818 PORTAGE RD
MADISON, WI 53704**

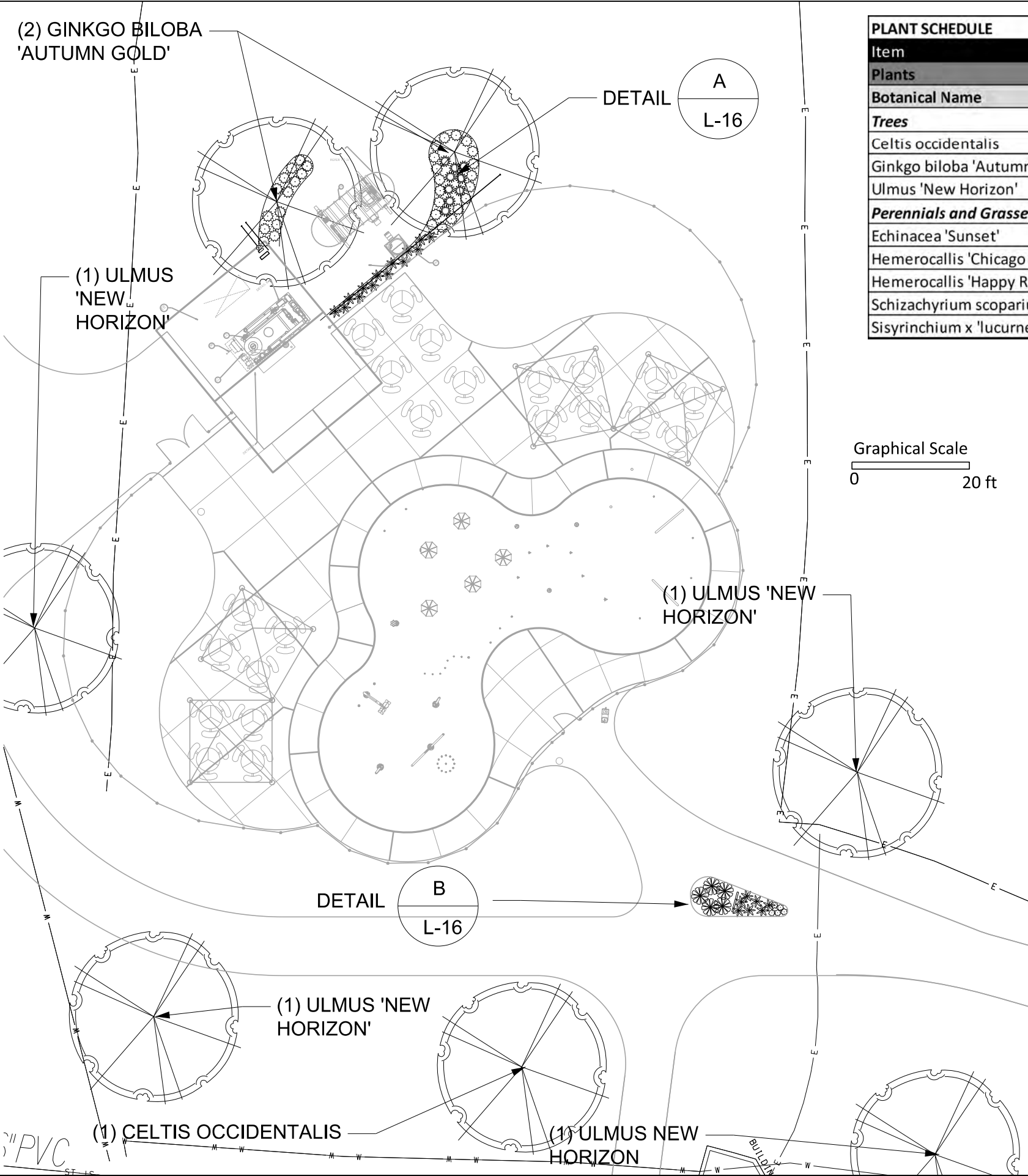
Although every effort has been made in preparing these plans and checking them for accuracy, the contractor and subcontractors must check all details and dimensions of their trade and be responsible for the same.

ITEM	DATE
Drawn by:	XX-XX-XXXX
Approved by:	XX-XX-XXXX

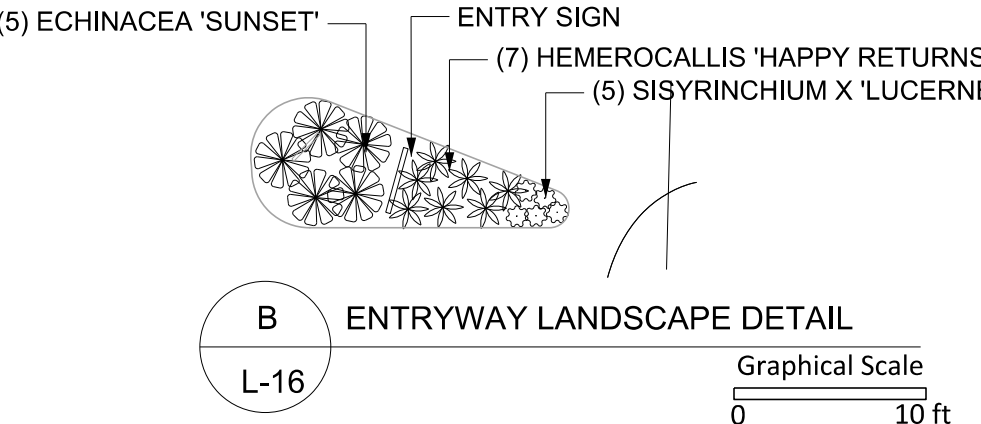
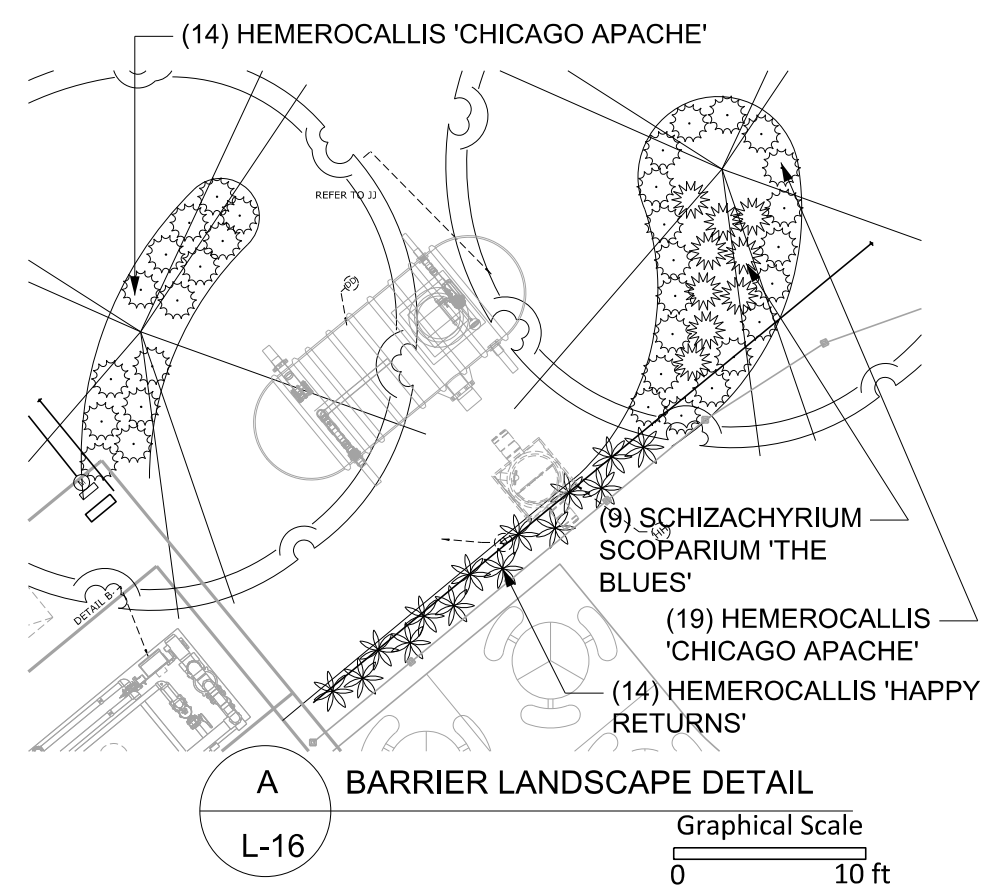
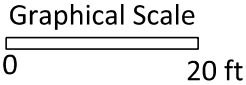
PUBLIC WORKS PROJECT #:
7264

SHEET TITLE:
LANDSCAPE PLAN

SHEET NUMBER:
L-15



PLANT SCHEDULE				
Item				
Plants				
Botanical Name	Common Name	Size	Container	Quantity
Trees				
Celtis occidentalis	Hackberry	2" Cal.	B&B	1
Ginkgo biloba 'Autumn Gold'	Autumn Gold Ginkgo	2" Cal.	B&B	2
Ulmus 'New Horizon'	New Horizon Elm	2" Cal.	B&B	4
Perennials and Grasses				
Echinacea 'Sunset'	Sunset Coneflower	#1	Container	5
Hemerocallis 'Chicago Apache'	Chicago Apache Daylily	#1	Container	33
Hemerocallis 'Happy Returns'	Happy Returns Daylily	#1	Container	21
Schizachyrium scoparium 'The Blues'	The Blues Little Bluestem	#1	Container	9
Sisyrinchium x 'lucerne'	Blue eyed grass	#1	Container	5



City of Madison
Department of Public Works
PARKS DIVISION
City-County Building, Suite 104
210 Martin Luther King, Jr. Blvd.
PO Box 2987
Madison, WI 53701-2987

play
MADISON PARKS

N

PROJECT:
**2014 PARK DIVISION,
PARKING UTILITY &
WATER UTILITY
CONTRACT**

**REINDAHL PARK
SPLASH PAD
1818 PORTAGE ROAD
MADISON, WI**

Although every effort has been made in preparing these plans and checking them for accuracy, the contractor and subcontractors must check all details and dimensions of their trade and be responsible for the same.

ITEM	DATE
Drawn by:	XX-XX-XXXX
Approved by:	XX-XX-XXXX

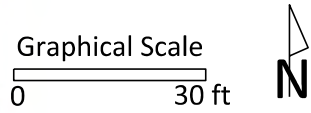
PUBLIC WORKS PROJECT #:
7264

SHEET TITLE:
LANDSCAPE PLAN

SHEET NUMBER:
L-16

PLANT SCHEDULE				
Item				
Plants				
Botanical Name	Common Name	Size	Container	Quantity
<i>Shade Tree</i>				
Acer x freemanii 'Autumn Fantasy'	Autumn Fantasy Maple	2" Cal.	B&B	1

City of Madison
Department of Public Works
PARKS DIVISION
*City-County Building, Suite 104
210 Martin Luther King, Jr. Blvd.
PO Box 2987
Madison, WI 53701-2987*
play
**MADISON
PARKS**



PROJECT: *2014 PARK
DIVISION,
PARKING &
WATER UTILITY
LANDSCAPING*

*RENNEBOHM PARK
115 N EAU CLAIRE AVE
MADISON, WI 53705*

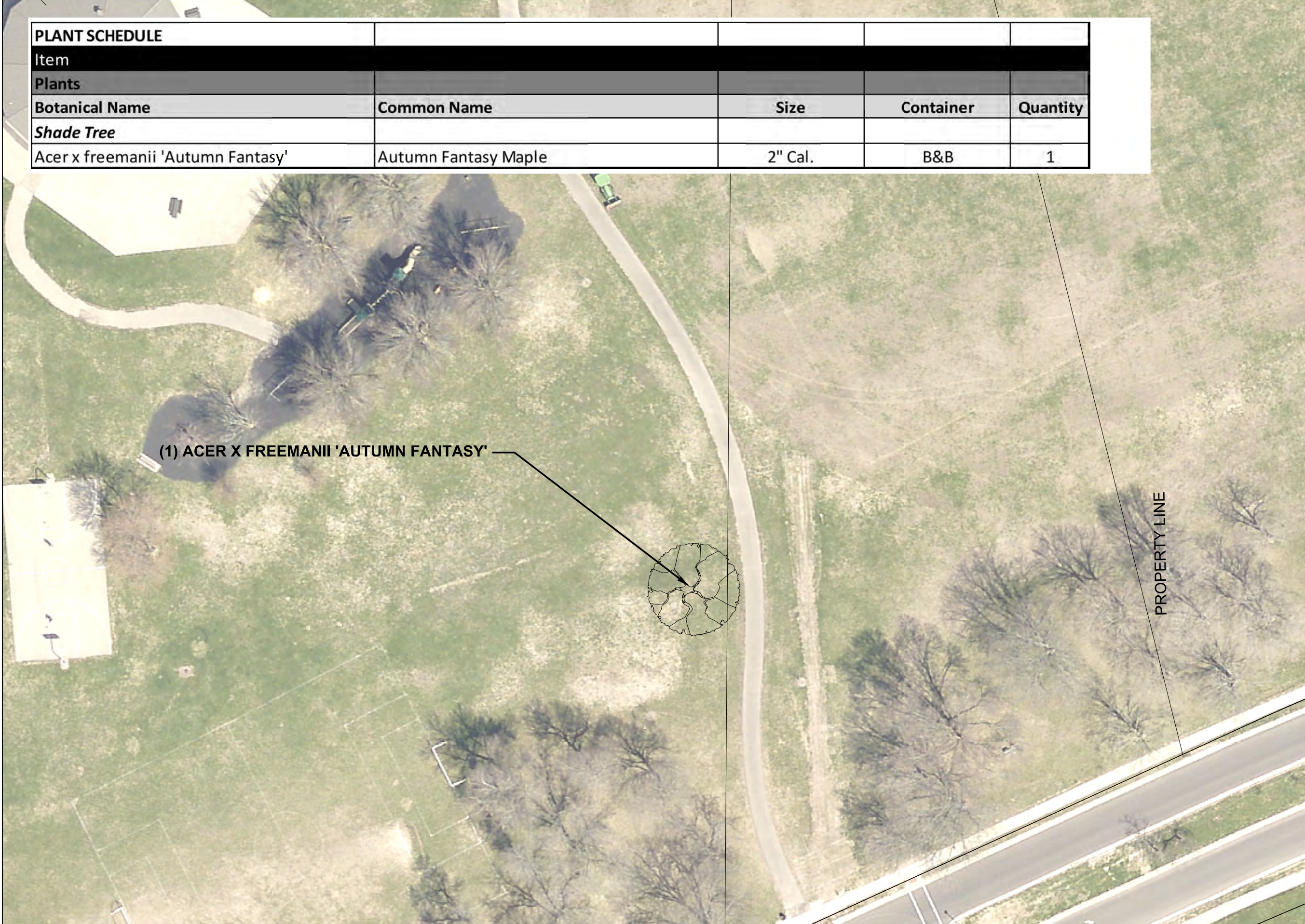
Although every effort has been made in preparing these plans and checking them for accuracy, the contractor and subcontractors must check all details and dimensions of their trade and be responsible for the same.

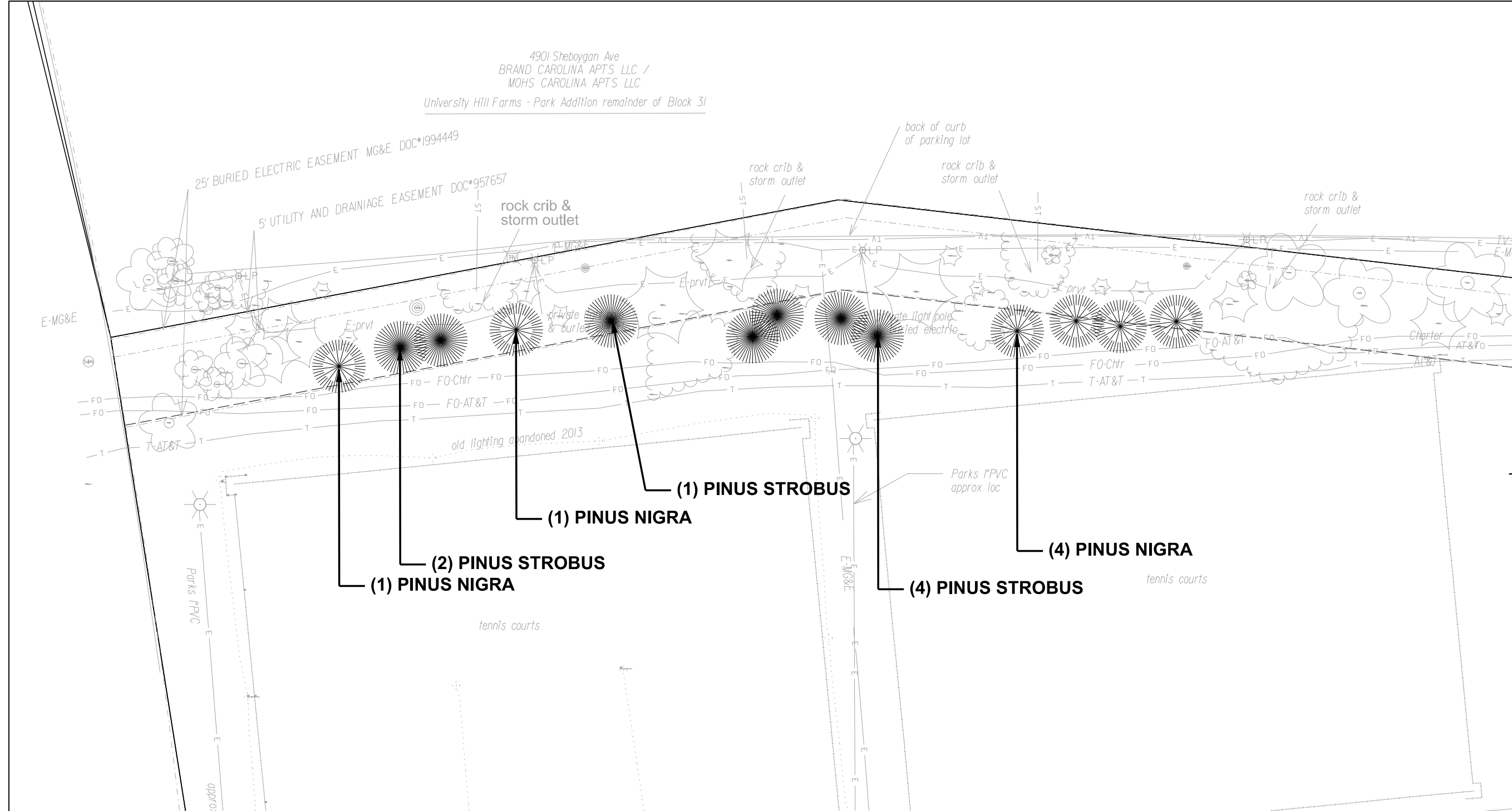
ITEM	DATE
Drawn by:	XX-XX-XXXX
Approved by:	XX-XX-XXXX

PUBLIC WORKS PROJECT #:
7264

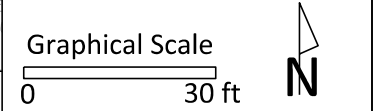
SHEET TITLE:
LANDSCAPE PLAN

SHEET NUMBER:
L-17





City of Madison
Department of Public Works
PARKS DIVISION
City-County Building, Suite 104
210 Martin Luther King, Jr. Blvd.
PO Box 2987
Madison, WI 53701-2987
play
MADISON
PARKS



PROJECT: **2014 PARK
DIVISION,
PARKING &
WATER UTILITY
LANDSCAPING**

**RENNEBOHM PARK
115 N. EAU CLAIRE AVE.
MADISON, WI 53705**

Although every effort has been made in preparing these plans and checking them for accuracy, the contractor and subcontractors must check all details and dimensions of their trade and be responsible for the same.

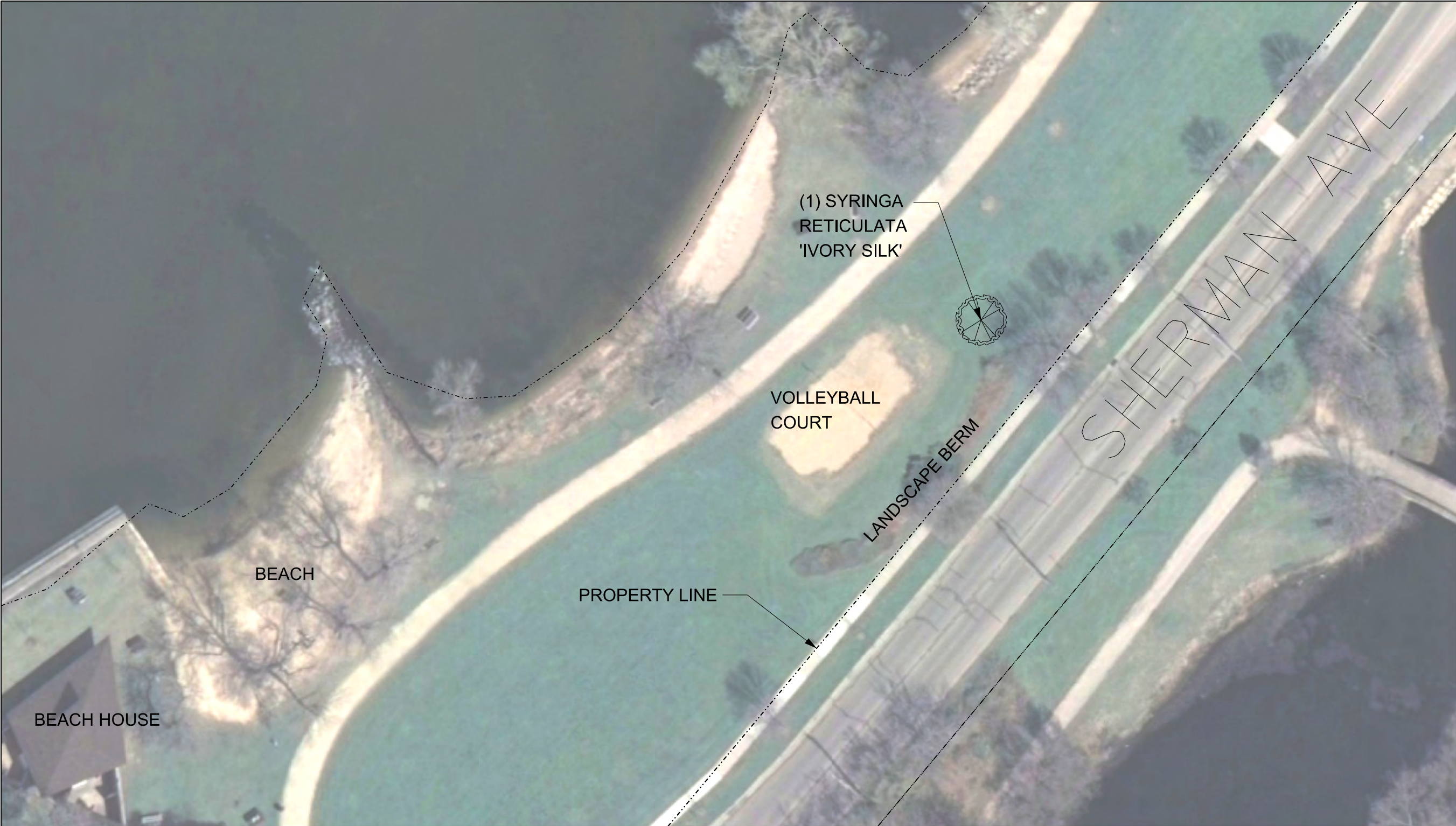
ITEM	DATE
Drawn by:	XX-XX-XXXX
Approved by:	XX-XX-XXXX

PUBLIC WORKS PROJECT #:
7264

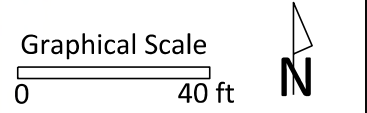
SHEET TITLE:
LANDSCAPE PLAN

SHEET NUMBER:
L-18

PLANT SCHEDULE				
Item				
Plants				
Botanical Name	Common Name	Size	Container	Quantity
Evergreen Trees				
Pinus nigra	Austrian Pine	6' Ht.	B&B	6
Pinus strobus	Eastern White Pine	6' Ht.	B&B	7



City of Madison
Department of Public Works
PARKS DIVISION
City-County Building, Suite 104
210 Martin Luther King, Jr. Blvd.
PO Box 2987
Madison, WI 53701-2987
play
MADISON PARKS



PROJECT: **2014 PARK DIVISION, PARKING & WATER UTILITY LANDSCAPING**

TENNEY PARK
1330 SHERMAN AVE
MADISON, WI 53703

Although every effort has been made in preparing these plans and checking them for accuracy, the contractor and subcontractors must check all details and dimensions of their trade and be responsible for the same.

ITEM	DATE
Drawn by:	XX-XX-XXXX
Approved by:	XX-XX-XXXX

PUBLIC WORKS PROJECT #:
7264

SHEET TITLE:
LANDSCAPE PLAN

SHEET NUMBER:
L-19

PLANT SCHEDULE				
Item				
Plants				
Botanical Name	Common Name	Size	Container	Quantity
Ornamental Trees				
Syringa reticulata 'Ivory Silk'	Ivory Silk Japanese Tree Liliac	1 1/2" Cal.	B&B	1

PLANT SCHEDULE				
Item				
Plants				
Botanical Name	Common Name	Size	Container	Quantity
Evergreen Trees				
Pinus strobus	White Pine	5' Ht.	B&B	9

City of Madison
Department of Public Works
PARKS DIVISION

City-County Building, Suite 104
210 Martin Luther King, Jr. Blvd.
PO Box 2987
Madison, WI 53701-2987

play
**MADISON
PARKS**

Graphical Scale

0 40 ft



PROJECT: **2014 PARK
DIVISION,
PARKING &
WATER UTILITY
LANDSCAPING**

**WALNUT GROVE PARK
202 N WESTFIELD RD
MADISON, WI 53717**

Although every effort has been made in preparing these plans and checking them for accuracy, the contractor and subcontractors must check all details and dimensions of their trade and be responsible for the same.

ITEM	DATE
Drawn by:	xx-xx-xxxx
Approved by:	xx-xx-xxxx

PUBLIC WORKS PROJECT #:
7264

SHEET TITLE:
LANDSCAPE PLAN

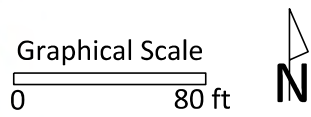
SHEET NUMBER:
L-20



PLANT SCHEDULE				
Item				
Plants				
Botanical Name	Common Name	Size	Container	Quantity
Trees				
Betula nigra 'Heritage'	Heritage River Birch - Multi stemmed (three stems)	5' ht clump	B&B	2
Quercus bicolor	Swamp White Oak	2" Cal.	B&B	7



City of Madison
Department of Public Works
PARKS DIVISION
City-County Building, Suite 104
210 Martin Luther King, Jr. Blvd.
PO Box 2987
Madison, WI 53701-2987
play
MADISON
PARKS



PROJECT: **2014 PARK
DIVISION,
PARKING &
WATER UTILITY
LANDSCAPING**

**WARNER PARK
2930 N SHERMAN AVE
MADISON, WI 53704**

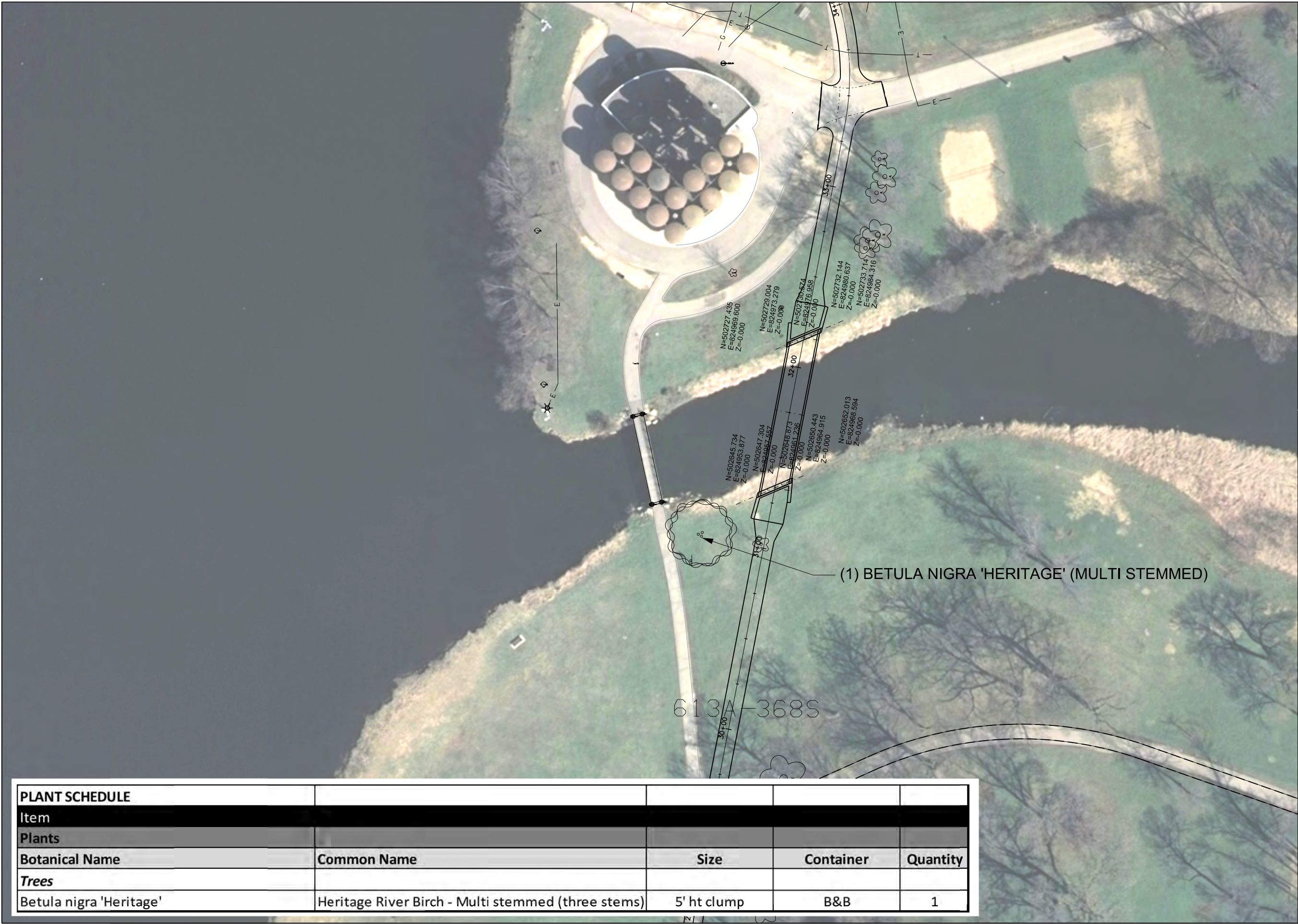
Although every effort has been made in preparing these plans and checking them for accuracy, the contractor and subcontractors must check all details and dimensions of their trade and be responsible for the same.

ITEM	DATE
Drawn by:	XX-XX-XXXX
Approved by:	XX-XX-XXXX

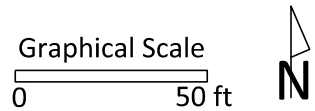
PUBLIC WORKS PROJECT #:
7264

SHEET TITLE:
LANDSCAPE PLAN

SHEET NUMBER:
L-21



City of Madison
Department of Public Works
PARKS DIVISION
City-County Building, Suite 104
210 Martin Luther King, Jr. Blvd.
PO Box 2987
Madison, WI 53701-2987
play
MADISON PARKS



PROJECT: **2014 PARK
DIVISION,
PARKING &
WATER UTILITY
LANDSCAPING**

**WARNER PARK
2930 N SHERMAN AVE
MADISON, WI 53704**

Although every effort has been made in preparing these plans and checking them for accuracy, the contractor and subcontractors must check all details and dimensions of their trade and be responsible for the same.

ITEM	DATE
Drawn by:	XX-XX-XXXX
Approved by:	XX-XX-XXXX

PUBLIC WORKS PROJECT #:
7264

SHEET TITLE:
LANDSCAPE PLAN

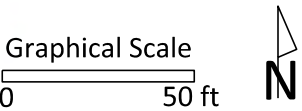
SHEET NUMBER:
L-22

PLANT SCHEDULE				
Item				
Plants				
Botanical Name	Common Name	Size	Container	Quantity
Trees				
Betula nigra 'Heritage'	Heritage River Birch - Multi stemmed (three stems)	5' ht clump	B&B	1



(3) QUERCUS ALBA

City of Madison
Department of Public Works
PARKS DIVISION
City-County Building, Suite 104
210 Martin Luther King, Jr. Blvd.
PO Box 2987
Madison, WI 53701-2987
play
MADISON
PARKS



PROJECT: **2014 PARK
DIVISION,
PARKING &
WATER UTILITY
LANDSCAPING**

**WARNER PARK
2930 N SHERMAN AVE
MADISON, WI 53704**

Although every effort has been made in preparing these plans and checking them for accuracy, the contractor and subcontractors must check all details and dimensions of their trade and be responsible for the same.

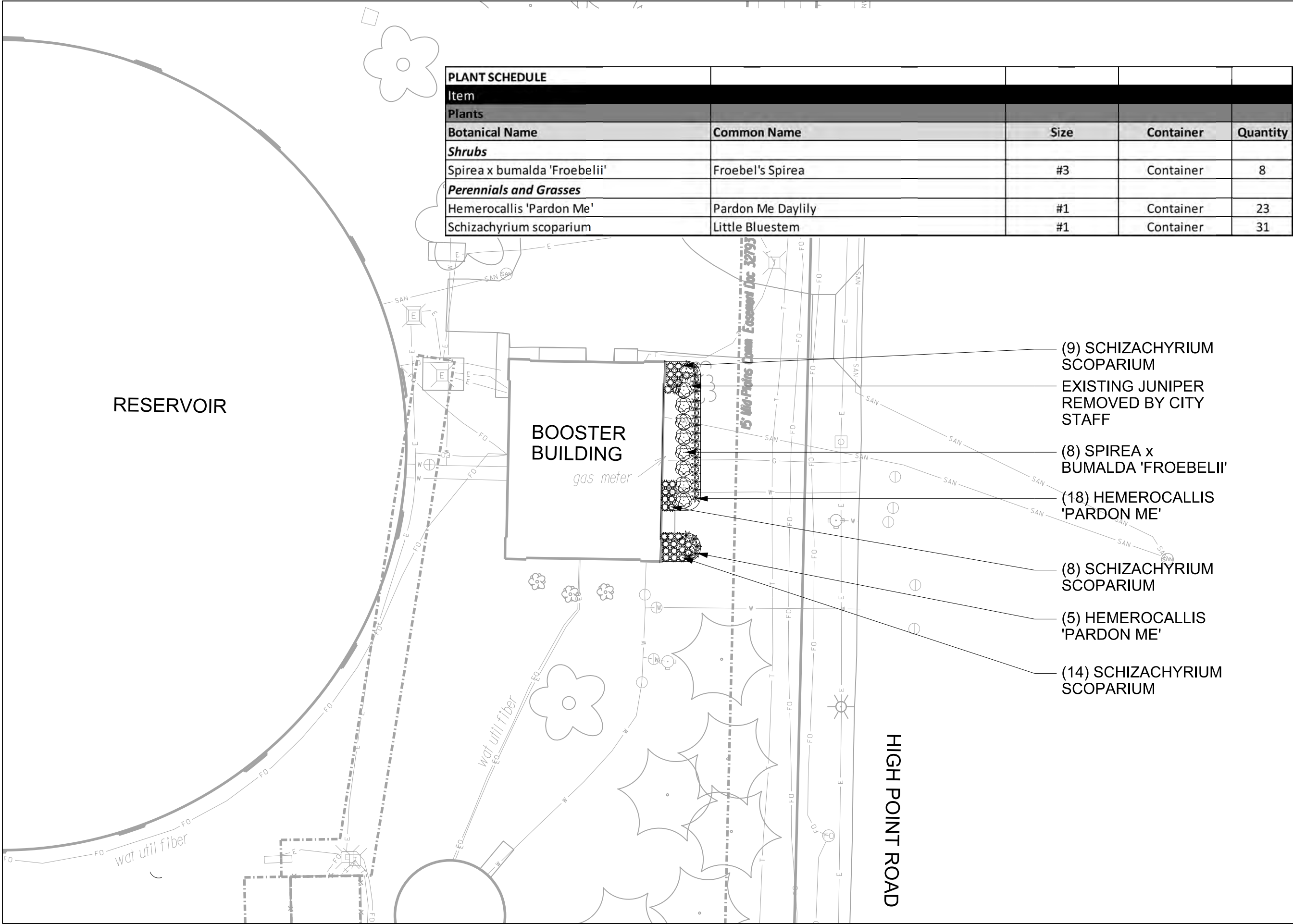
ITEM	DATE
Drawn by:	XX-XX-XXXX
Approved by:	XX-XX-XXXX

PUBLIC WORKS PROJECT #:
7264

SHEET TITLE:
LANDSCAPE PLAN

SHEET NUMBER:
L-23

PLANT SCHEDULE				
Item				
Plants				
Botanical Name	Common Name	Size	Container	Quantity
Trees				
Quercus alba	White Oak	2" Cal.	B&B	3



PLANT SCHEDULE				
Item				
Plants				
Botanical Name	Common Name	Size	Container	Quantity
Shrubs				
Spirea x bumalda 'Froebelii'	Froebel's Spirea	#3	Container	8
Perennials and Grasses				
Hemerocallis 'Pardon Me'	Pardon Me Daylily	#1	Container	23
Schizachyrium scoparium	Little Bluestem	#1	Container	31

City of Madison
Department of Public Works
PARKS DIVISION

City-County Building, Suite 104
210 Martin Luther King, Jr. Blvd.
PO Box 2987
Madison, WI 53701-2987

play
**MADISON
PARKS**

Graphical Scale
0 20 ft
N

PROJECT: **2014 PARK
DIVISION,
PARKING &
WATER UTILITY
LANDSCAPING**

**WELL 26
910 S HIGH POINT
MADISON, WI 53719**

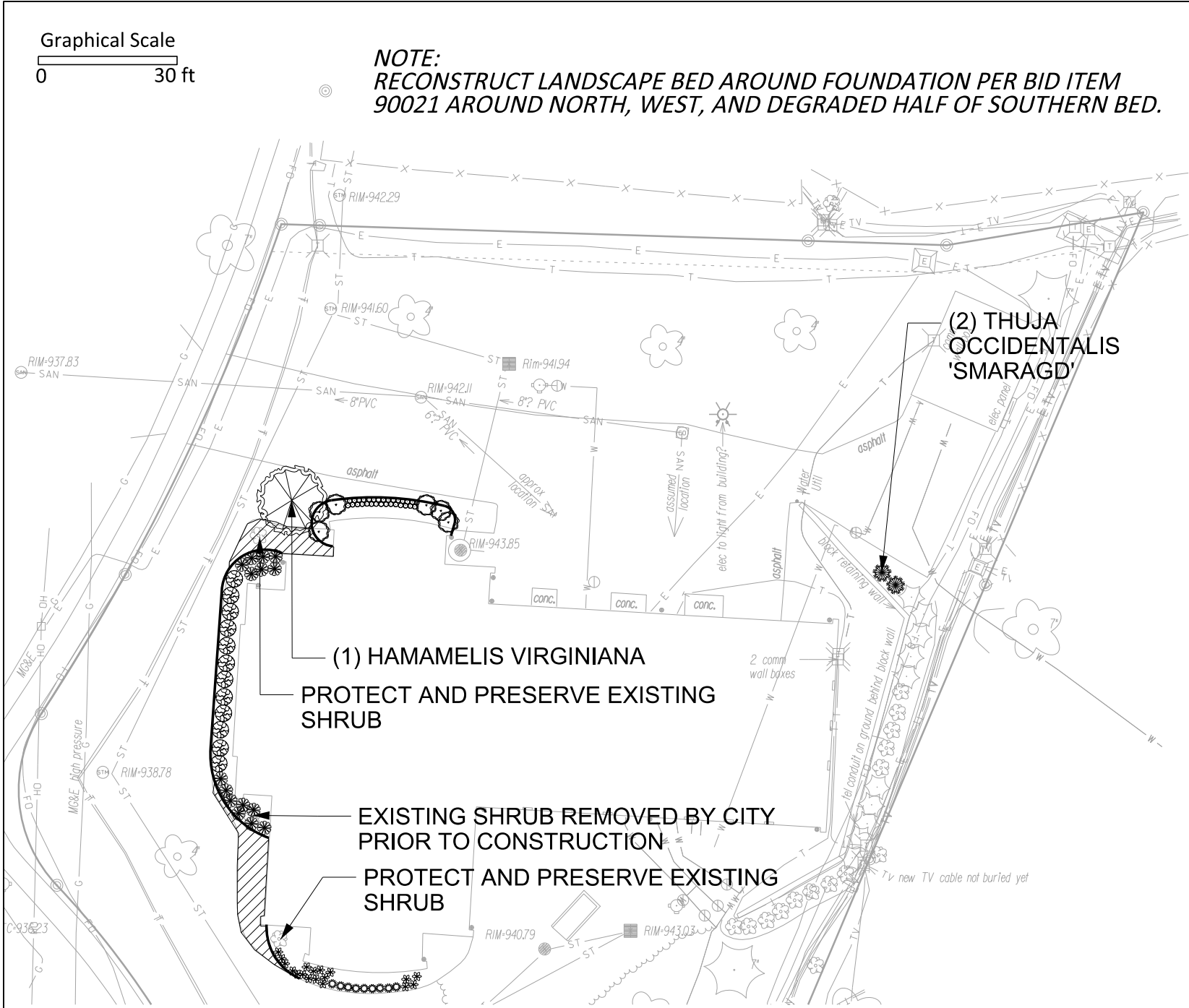
Although every effort has been made in preparing these plans and checking them for accuracy, the contractor and subcontractors must check all details and dimensions of their trade and be responsible for the same.

ITEM	DATE
Drawn by:	xx-xx-xxxx
Approved by:	xx-xx-xxxx

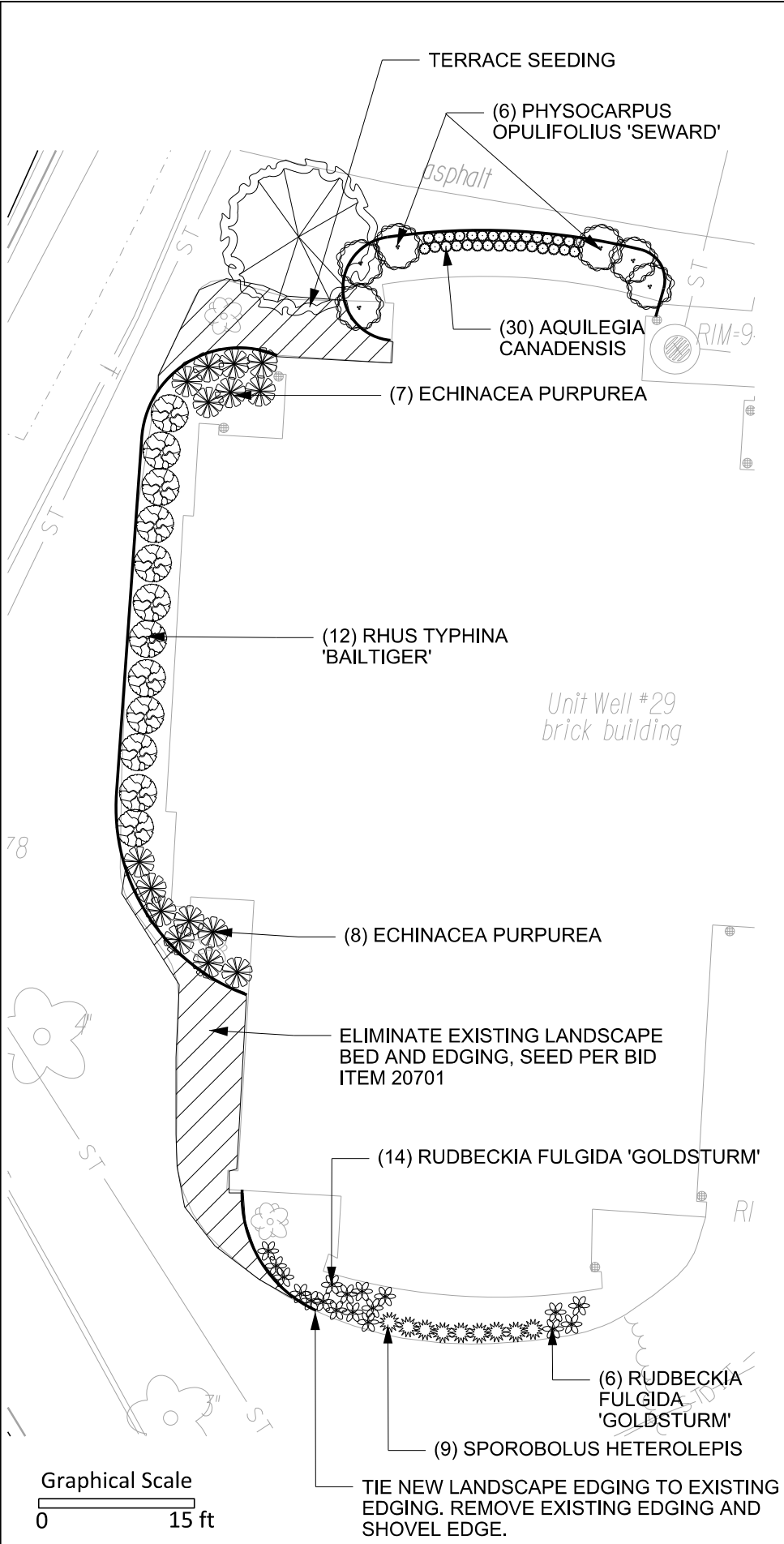
PUBLIC WORKS PROJECT #:
7264

SHEET TITLE:
LANDSCAPE PLAN

SHEET NUMBER:
L-24



PLANT SCHEDULE				
Item				
Plants				
Botanical Name	Common Name	Size	Container	Quantity
Ornamental Trees				
Hamamelis virginiana	Common Witchhazel	6' Ht	B&B/Container	1
Shrubs				
Rhus typhina 'Bailtiger'	Tiger Eyes Staghorn Sumac	#5	Container	12
Physocarpus opulifolius 'Seward'	Summer Wine Ninebark	#5	Container	6
Thuja occidentalis 'Smaragd'	Emerald Green Cedar	6' Ht.	B&B/Container	2
Perennials and Grasses				
Aquilegia canadensis	Columbine	#1	Container	30
Echinacea purpurea	Purple Coneflower	#1	Container	15
Rudbeckia fulgida 'Goldsturm'	Goldsturm Black-eyed Susan	#1	Container	20
Sporobolus heterolepis	Prairie Dropseed	#1	Container	9



City of Madison
Department of Public Works
PARKS DIVISION
City-County Building, Suite 104
210 Martin Luther King, Jr. Blvd.
PO Box 2987
Madison, WI 53701-2987
play
MADISON
PARKS

PROJECT: **2014 PARK DIVISION, PARKING & WATER UTILITY LANDSCAPING**

WELL 29
829 N. THOMPSON DR.
MADISON, WI 53704

Although every effort has been made in preparing these plans and checking them for accuracy, the contractor and subcontractors must check all details and dimensions of their trade and be responsible for the same.

ITEM	DATE
Drawn by:	XX-XX-XXXX
Approved by:	XX-XX-XXXX

PUBLIC WORKS PROJECT #:
7264

SHEET TITLE:
LANDSCAPE PLAN

SHEET NUMBER:
L-26

PLANT SCHEDULE				
Item				
Plants				
Botanical Name	Common Name	Size	Container	Quantity
<i>Perennials</i>				
Monarda 'Claire Grace'	Claire Grace Beebalm	#1	Container	10
Rudbeckia hirta	Black eyed Susan	#1	Container	11
Sorghastrum nutans 'Indian Steel'	Indian Steel Indian Grass	#1	Container	14

City of Madison
Department of Public Works
PARKS DIVISION

City-County Building, Suite 104
210 Martin Luther King, Jr. Blvd.
PO Box 2987
Madison, WI 53701-2987

play
**MADISON
PARKS**

Graphical Scale
0 5 ft
N

PROJECT: **2014 PARK
DIVISION,
PARKING &
WATER UTILITY
LANDSCAPING**

**WESTPORT
MEADOWS PARK
4338 BIELFUSS DRIVE
MADISON, WI 53704**

Although every effort has been made in preparing these plans and checking them for accuracy, the contractor and subcontractors must check all details and dimensions of their trade and be responsible for the same.

ITEM	DATE
Drawn by:	XX-XX-XXXX
Approved by:	XX-XX-XXXX

PUBLIC WORKS PROJECT #:
7264

SHEET TITLE:
LANDSCAPE PLAN

SHEET NUMBER:
L-27

(14) SORGHASTRUM
NUTANS 'INDIAN
STEEL'

(5) MONARDA
'CLAIRE GRACE'

SHOVEL EDGE

PROTECT EXISTING TREE

EXISTING PARK SIGN

TERRACE SEED PER
BID ITEM 20701

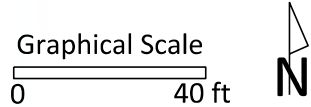
(5) MONARDA 'CLAIRE
GRACE'

(11) RUDBECKIA HIRTA

NOTE:
1. REMOVE AND DISCARD ALL EXISTING BOULDERS PER BID ITEM 90021 RECONSTRUCT LANDSCAPE BED.

NOTE:
1. THIS TREE WILL REPLACE EXISTING ASH TREE, TO BE REMOVED BY CONTRACTOR.
EXACT TREE TO BE REMOVED SHALL BE DETERMINED BY ENGINEER. BID ITEMS
20401 AND 20402 INCLUDE QUANTITY FOR REMOVAL OF 14" I.D. ASH TREE.
2. PROPOSED TREE LOCATION TO BE MARKED IN FIELD BY CITY STAFF TO REPLACE
EXISTING ASH TREE.

City of Madison
Department of Public Works
PARKS DIVISION
*City-County Building, Suite 104
210 Martin Luther King, Jr. Blvd.
PO Box 2987
Madison, WI 53701-2987*
play
MADISON
PARKS



PROJECT: **2014 PARK
DIVISION,
PARKING &
WATER UTILITY
LANDSCAPING**

**YAHARA PLACE PARK
2025 YAHARA PLACE
MADISON, WI 53704**

Although every effort has been made in preparing these plans and checking them for accuracy, the contractor and subcontractors must check all details and dimensions of their trade and be responsible for the same.

ITEM	DATE
Drawn by:	XX-XX-XXXX
Approved by:	XX-XX-XXXX

PUBLIC WORKS PROJECT #:
7264

SHEET TITLE:
LANDSCAPE PLAN

SHEET NUMBER:
L-28

PLANT SCHEDULE				
Item				
Plants				
Botanical Name	Common Name	Size	Container	Quantity
Trees				
Populus deltoides 'Siouxland'	Siouxland Male Cottonless Cottonwood	2" Cal.	B&B	1