

SHEET SCHEDULE

- 1.1 PROJECT LOCATION AND SITE ACCESS
- 1.2 CONSTRUCTION ACCESS LIMITATIONS

- 2.1 DEMOLITION AND PROTECTION PLAN

- 3.1 SITE PLAN - WEST
- 3.2 SITE PLAN - EAST

- 4.1 GRADING AND EROSION CONTROL PLAN - WEST
- 4.2 GRADING AND EROSION CONTROL PLAN - WEST

- 5.1 DESIGN CALCULATIONS

City of Madison
Department of Public Works
PARKS DIVISION

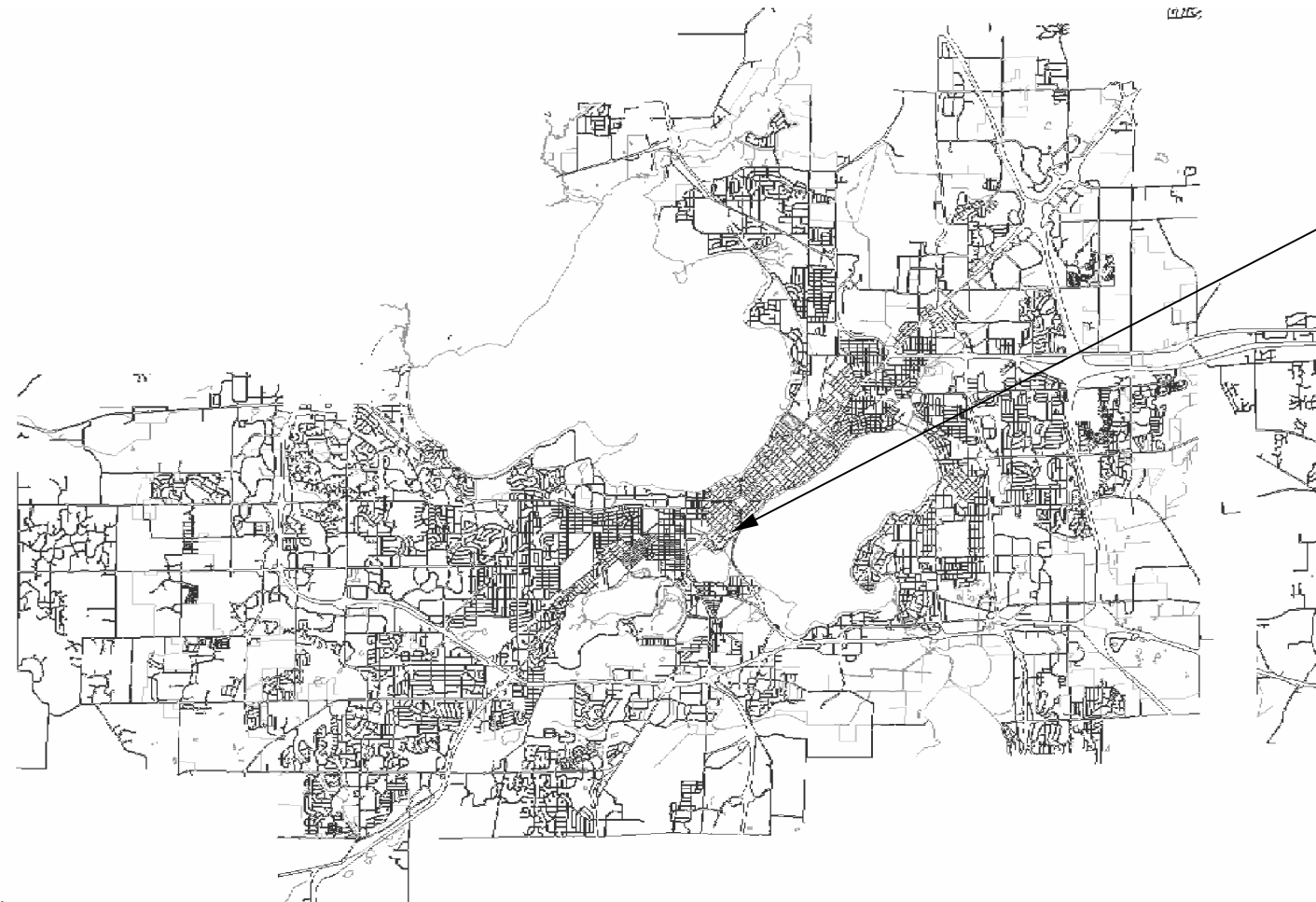
City-County Building, Suite 104
210 Martin Luther King, Jr. Blvd.
PO Box 2987
Madison, WI 53701-2987

play
**MADISON
PARKS**



BRITTINGHAM PARK PAVING IMPROVEMENTS

CONTRACT 7325



BRITTINGHAM PARK
201 PROUDFIT STREET
MADISON, WI

PROJECT:

*BRITTINGHAM PARK
PAVING
IMPROVEMENTS*

*BRITTINGHAM PARK
201 PROUDFIT ST.
MADISON, WI*

Although every effort has been made in preparing these plans and checking them for accuracy, the contractor and subcontractors must check all details and dimensions of their trade and be responsible for the same.

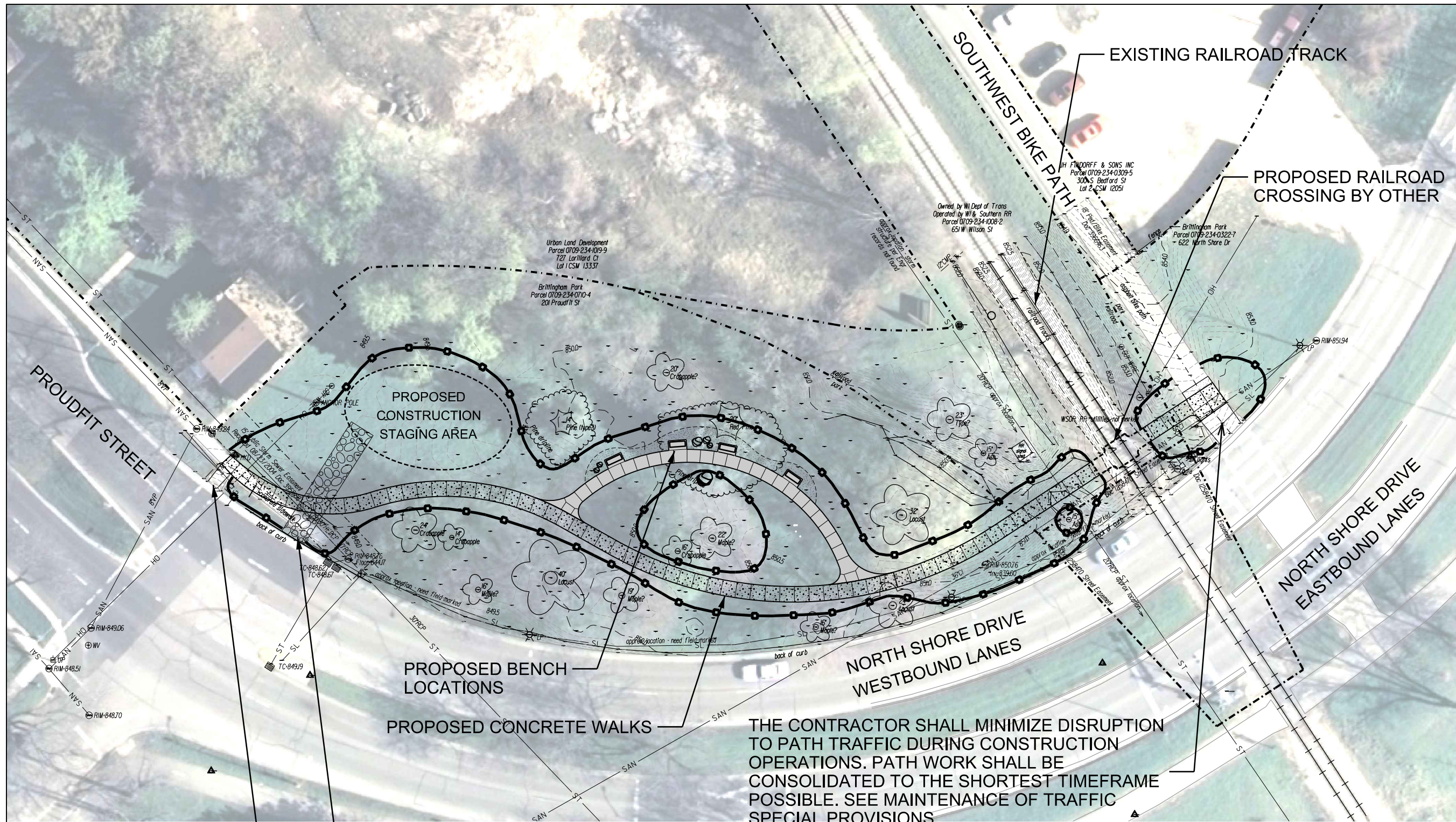
ITEM	DATE
Drawn by: MS	06-21-14
Revised by:	

PUBLIC WORKS PROJECT #:

7325

SHEET TITLE:

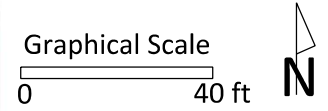
SHEET NUMBER:



City of Madison
 Department of Public Works
PARKS DIVISION

City-County Building, Suite 104
 210 Martin Luther King, Jr. Blvd.
 PO Box 2987
 Madison, WI 53701-2987

play
**MADISON
 PARKS**



PROJECT:
**BRITTINGHAM PARK
 PAVING
 IMPROVEMENTS**

**BRITTINGHAM PARK
 201 PROUDFIT ST.
 MADISON, WI**

Although every effort has been made in preparing these plans and checking them for accuracy, the contractor and subcontractors must check all details and dimensions of their trade and be responsible for the same.

ITEM	DATE
Drawn by: MS	06-21-14
Revised by:	

PUBLIC WORKS PROJECT: 7325

SHEET TITLE:
**PROJECT
 LOCATION AND
 SITE ACCESS**

SHEET NUMBER:
1.1

THE CONTRACTOR SHALL MINIMIZE DISRUPTION TO PATH TRAFFIC DURING CONSTRUCTION OPERATIONS. PATH WORK SHALL BE CONSOLIDATED TO THE SHORTEST TIMEFRAME POSSIBLE. SEE MAINTENANCE OF TRAFFIC SPECIAL PROVISIONS.

CONSTRUCTION ACCESS FROM PROUDFIT STREET. PROTECT CURB, REPAIR AND REPLACEMENT OF CURB IS INCIDENTAL TO THIS CONTRACT. CONSTRUCTION ACCESS MUST BE AT LEAST 10' FROM THE TRUNK OF ANY STREET TREE.

EXISTING PEDESTRAIN CROSSING. PUBLIC ACCESS MUST BE MAINTAINED DURING ALL CONSTRUCTION OPERATIONS.

City of Madison
Department of Public Works
PARKS DIVISION

City-County Building, Suite 104
210 Martin Luther King, Jr. Blvd.
PO Box 2987
Madison, WI 53701-2987

play
**MADISON
PARKS**

Graphical Scale

0 40 ft



PROJECT:

**BRITTINGHAM PARK
PAVING
IMPROVEMENTS**

**BRITTINGHAM PARK
201 PROUDFIT ST.
MADISON, WI**

Although every effort has been made in preparing these plans and checking them for accuracy, the contractor and subcontractors must check all details and dimensions of their trade and be responsible for the same.

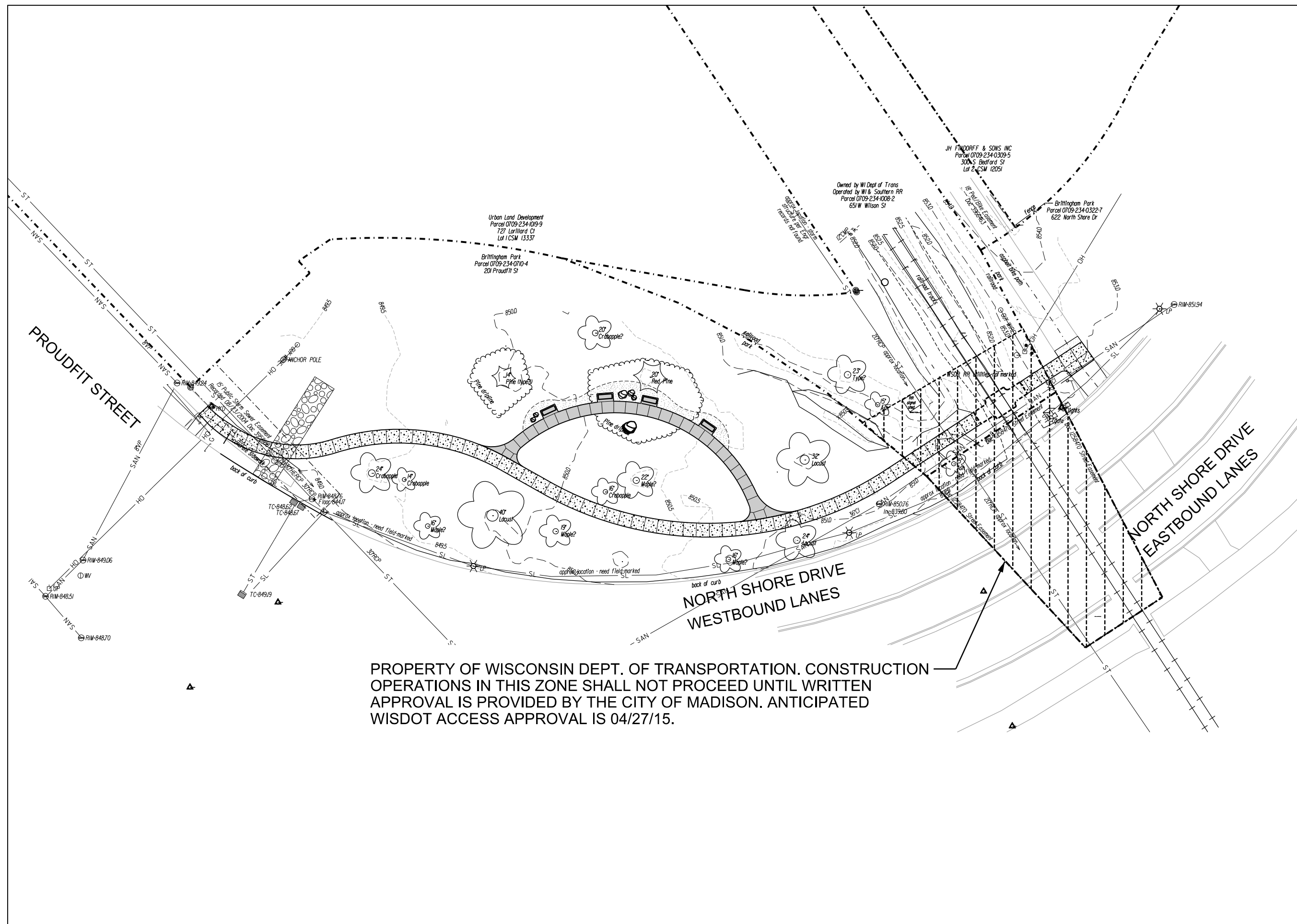
ITEM	DATE
Drawn by: MS	06-21-14
Revised by:	

Revised by:

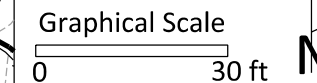
PUBLIC WORKS PROJECT: 7325

SHEET TITLE:
**CONSTRUCTION
ACCESS
LIMITATIONS**

SHEET NUMBER:
1.2



PROPERTY OF WISCONSIN DEPT. OF TRANSPORTATION. CONSTRUCTION OPERATIONS IN THIS ZONE SHALL NOT PROCEED UNTIL WRITTEN APPROVAL IS PROVIDED BY THE CITY OF MADISON. ANTICIPATED WISDOT ACCESS APPROVAL IS 04/27/15.



PROJECT:
**BRITTINGHAM PARK
PAVING
IMPROVEMENTS**

**BRITTINGHAM PARK
201 PROUDFIT ST.
MADISON, WI**

Although every effort has been made in preparing these plans and checking them for accuracy, the contractor and subcontractors must check all details and dimensions of their trade and be responsible for the same.

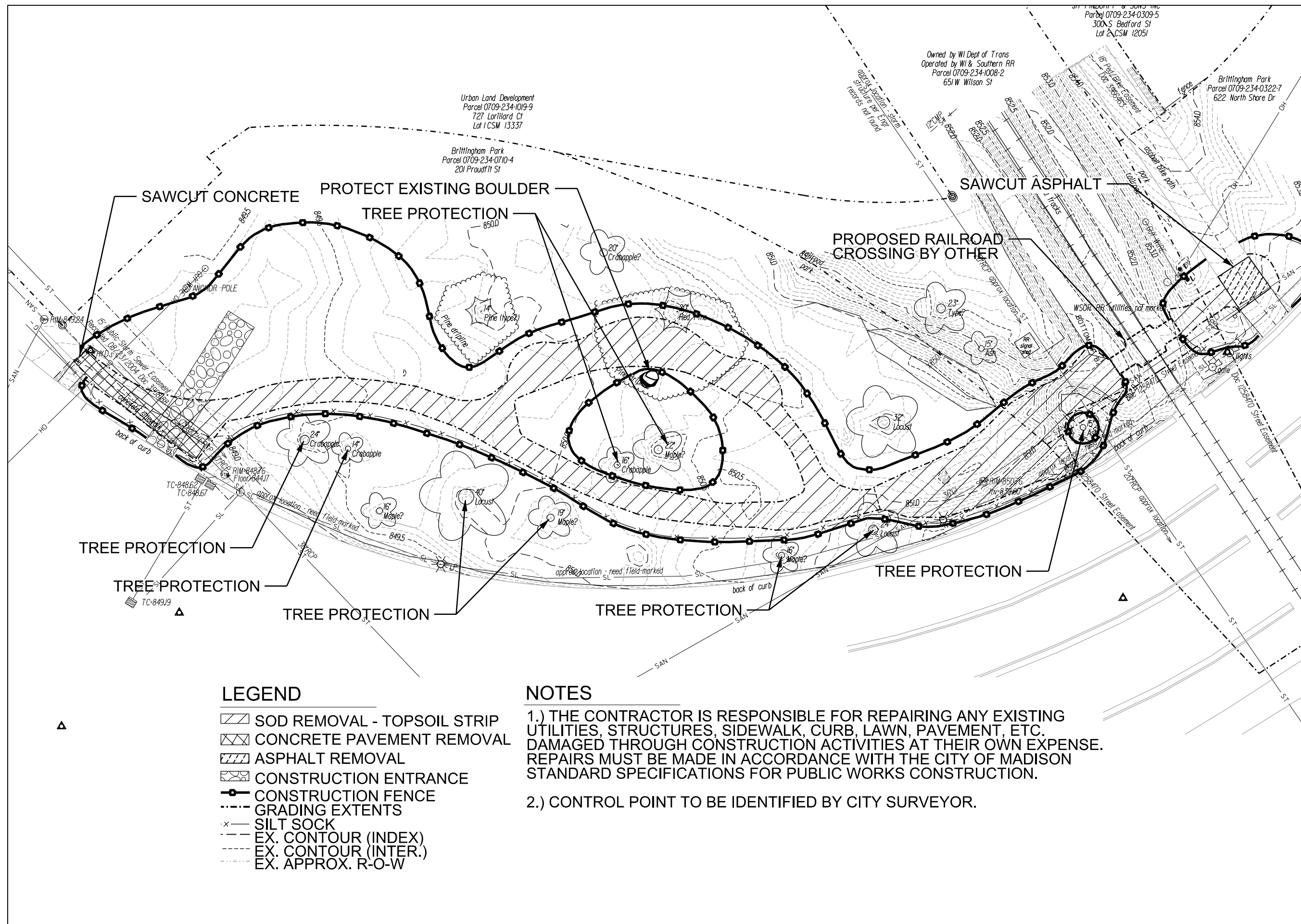
ITEM	DATE
Drawn by: MS	06-21-14

Revised by:

PUBLIC WORKS PROJECT: 7325

SHEET TITLE:
**DEMOLITION AND
PROTECTION PLAN**

SHEET NUMBER:
2.1

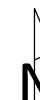


LEGEND

- SOD REMOVAL - TOPSOIL STRIP
- CONCRETE PAVEMENT REMOVAL
- ASPHALT REMOVAL
- CONSTRUCTION ENTRANCE
- CONSTRUCTION FENCE
- GRADING EXTENTS
- SILT SOCK
- EX. CONTOUR (INDEX)
- EX. CONTOUR (INTER.)
- EX. APPROX. R-O-W

NOTES

- 1.) THE CONTRACTOR IS RESPONSIBLE FOR REPAIRING ANY EXISTING UTILITIES, STRUCTURES, SIDEWALK, CURB, LAWN, PAVEMENT, ETC. DAMAGED THROUGH CONSTRUCTION ACTIVITIES AT THEIR OWN EXPENSE. REPAIRS MUST BE MADE IN ACCORDANCE WITH THE CITY OF MADISON STANDARD SPECIFICATIONS FOR PUBLIC WORKS CONSTRUCTION.
- 2.) CONTROL POINT TO BE IDENTIFIED BY CITY SURVEYOR.



PROJECT:

**BRITTINGHAM PARK
PAVING
IMPROVEMENTS**

**BRITTINGHAM PARK
201 PROUDFIT ST.
MADISON, WI**

Although every effort has been made in preparing these plans and checking them for accuracy, the contractor and subcontractors must check all details and dimensions of their trade and be responsible for the same.

ITEM DATE

Drawn by: MS 06-21-14

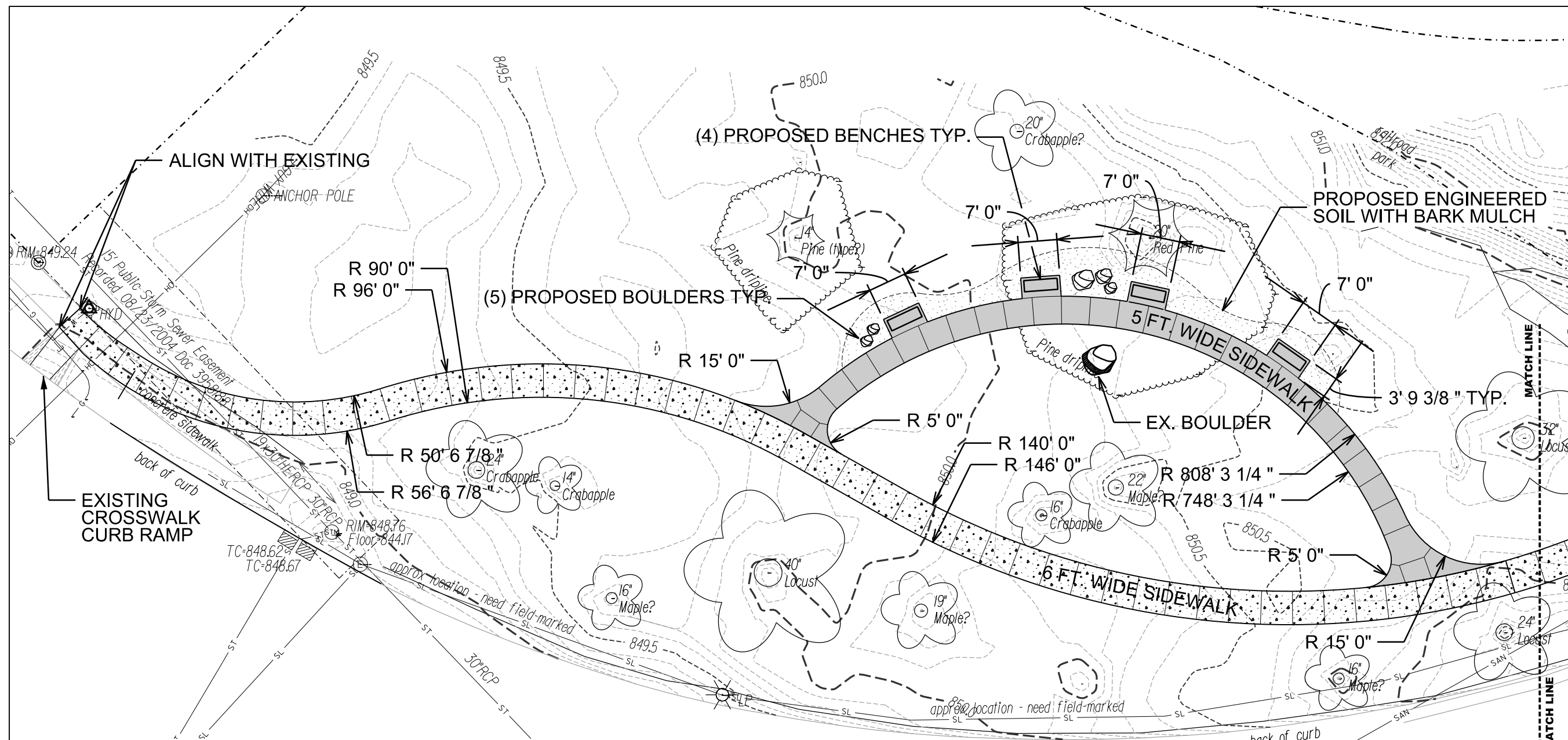
Revised by:

PUBLIC WORKS PROJECT: 7325

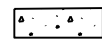

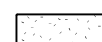
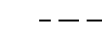
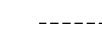

SHEET TITLE:
**SITE PLAN-
WEST**

SHEET NUMBER:

3.1



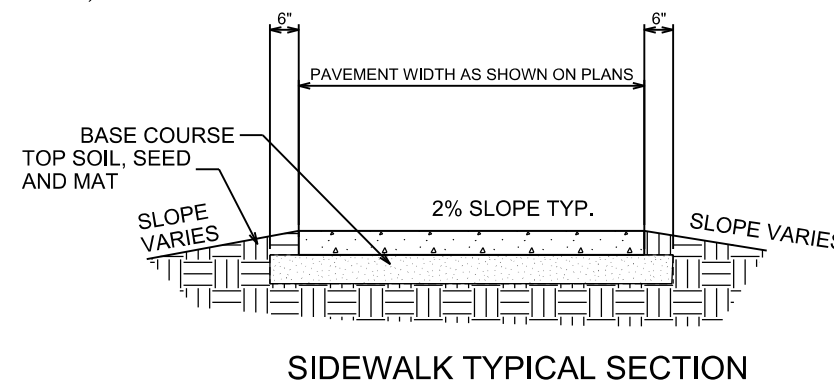
LEGEND

-  CONCRETE 5-INCH SIDEWALK
-  ADD ALTERNATE A: INTEGRAL COLOR WITH TEXTURE FOR SIDEWALK. BASE BID CONDITION IS STANDARD CONCRETE 5-INCH SIDEWALK.
-  ENGINEERED SOIL WITH BARK MULCH
-  EX. CONTOUR (INDEX)
-  EX. CONTOUR (INTER.)
-  EX. APPROX. R-O-W

NOTES

1.) THE CONTRACTOR IS RESPONSIBLE FOR REPAIRING ANY EXISTING UTILITIES, STRUCTURES, SIDEWALK, CURB, LAWN, PAVEMENT, ETC. DAMAGED THROUGH CONSTRUCTION ACTIVITIES AT THEIR OWN EXPENSE. REPAIRS MUST BE MADE IN ACCORDANCE WITH THE CITY OF MADISON STANDARD SPECIFICATIONS FOR PUBLIC WORKS CONSTRUCTION.

2.) CONTROL POINT TO BE IDENTIFIED BY PARKS SURVEYOR.



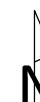
City of Madison
Department of Public Works
PARKS DIVISION

City-County Building, Suite 104
210 Martin Luther King, Jr. Blvd.
PO Box 2987
Madison, WI 53701-2987

play
**MADISON
PARKS**

Graphical Scale

0 20 ft



PROJECT:

**BRITTINGHAM PARK
PAVING
IMPROVEMENTS**

**BRITTINGHAM PARK
201 PROUDFIT ST.
MADISON, WI**

Although every effort has been made in preparing these plans and checking them for accuracy, the contractor and subcontractors must check all details and dimensions of their trade and be responsible for the same.

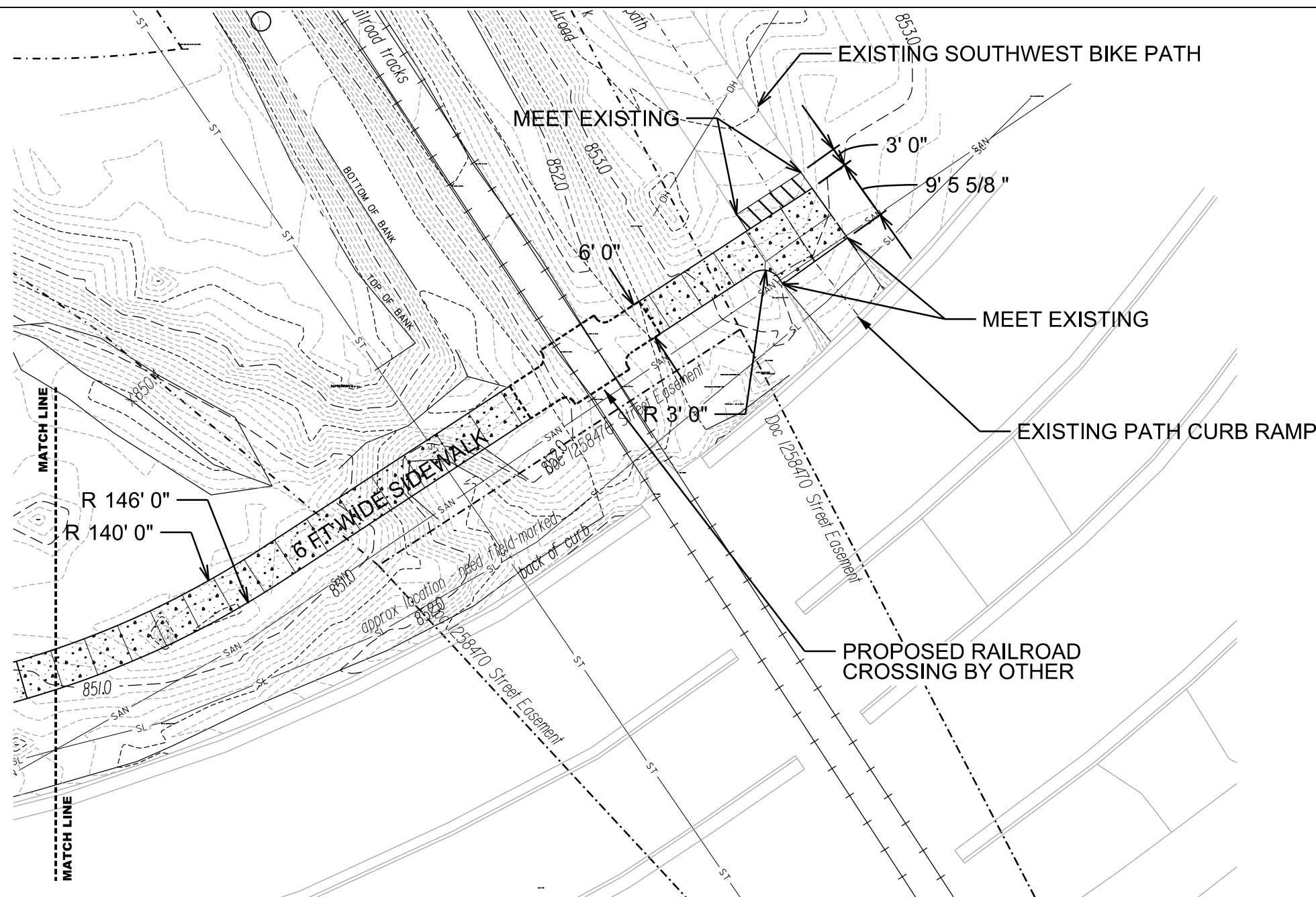
ITEM	DATE
Drawn by: MS	06-21-14
Revised by:	

Revised by:

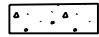
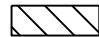
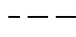
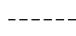

PUBLIC WORKS PROJECT: 7325

SHEET TITLE:
**SITE PLAN-
EAST**

SHEET NUMBER:
3.2



LEGEND

-  CONCRETE 5-INCH SIDEWALK
-  ASPHALT PAVEMENT
-  EX. CONTOUR (INDEX)
-  EX. CONTOUR (INTER.)
-  EX. APPROX. R-O-W

NOTES

- 1.) THE CONTRACTOR IS RESPONSIBLE FOR REPAIRING ANY EXISTING UTILITIES, STRUCTURES, SIDEWALK, CURB, LAWN, PAVEMENT, ETC. DAMAGED THROUGH CONSTRUCTION ACTIVITIES AT THEIR OWN EXPENSE. REPAIRS MUST BE MADE IN ACCORDANCE WITH THE CITY OF MADISON STANDARD SPECIFICATIONS FOR PUBLIC WORKS CONSTRUCTION.
- 2.) CONTROL POINT TO BE IDENTIFIED BY PARKS SURVEYOR.

Graphical Scale

0 20 ft



PROJECT:

**BRITTINGHAM PARK
PAVING
IMPROVEMENTS**

**BRITTINGHAM PARK
201 PROUDFIT ST.
MADISON, WI**

Although every effort has been made in preparing these plans and checking them for accuracy, the contractor and subcontractors must check all details and dimensions of their trade and be responsible for the same.

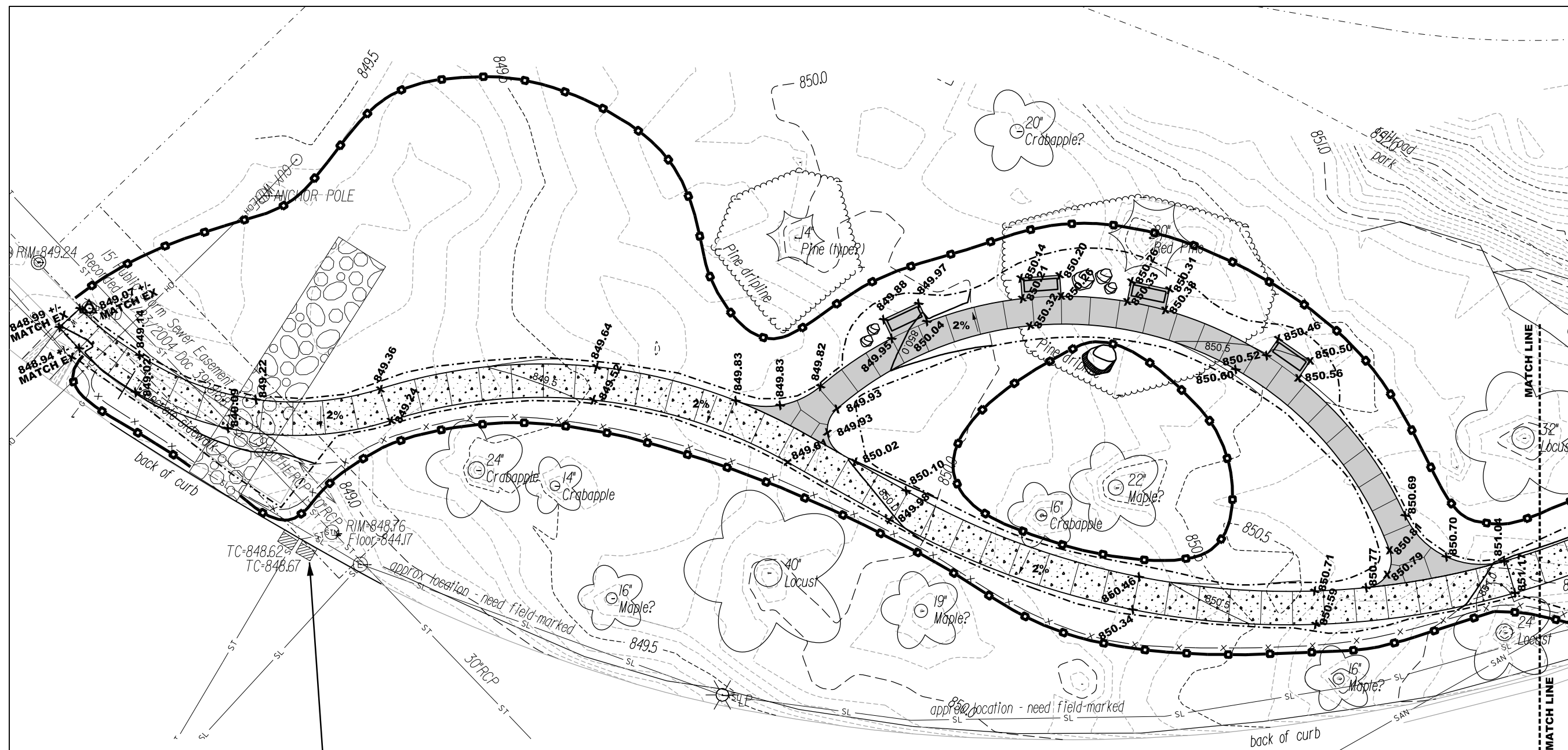
ITEM DATE
Drawn by: MS 06-21-14

Revised by:

PUBLIC WORKS PROJECT: 7325

SHEET TITLE:
**GRADING AND
EROSION CONTROL
PLAN - WEST**

SHEET NUMBER:
4.1



(2) INLET PROTECTION, TYPE H.

LEGEND

- CONCRETE FIVE-INCH SIDEWALK
- ADD ALTERNATE A: INTEGRAL COLOR WITH TEXTURE FOR SIDEWALK. BASE BID CONDITION IS STANDARD CONCRETE 5-INCH SIDEWALK.
- CONSTRUCTION ENTRANCE
- GRADING EXTENTS
- SILT SOCK
- CONTOUR (INDEX)
- CONTOUR (INTER.)
- EX. CONTOUR (INDEX)
- EX. CONTOUR (INTER.)
- EX. APPROX. R-O-W
- CONSTRUCTION FENCE

NOTES

- 1.) THE CONTRACTOR IS RESPONSIBLE FOR REPAIRING ANY EXISTING UTILITIES, STRUCTURES, SIDEWALK, CURB, LAWN, PAVEMENT, ETC. DAMAGED THROUGH CONSTRUCTION ACTIVITIES AT THEIR OWN EXPENSE. REPAIRS MUST BE MADE IN ACCORDANCE WITH THE CITY OF MADISON STANDARD SPECIFICATIONS FOR PUBLIC WORKS CONSTRUCTION.
- 2.) CONTROL POINT TO BE IDENTIFIED BY CITY SURVEYOR.

City of Madison
Department of Public Works
PARKS DIVISION

City-County Building, Suite 104
210 Martin Luther King, Jr. Blvd.
PO Box 2987
Madison, WI 53701-2987

play
**MADISON
PARKS**

Graphical Scale

0 20 ft



PROJECT:

**BRITTINGHAM PARK
PAVING
IMPROVEMENTS**

**BRITTINGHAM PARK
201 PROUDFIT ST.
MADISON, WI**

Although every effort has been made in preparing these plans and checking them for accuracy, the contractor and subcontractors must check all details and dimensions of their trade and be responsible for the same.

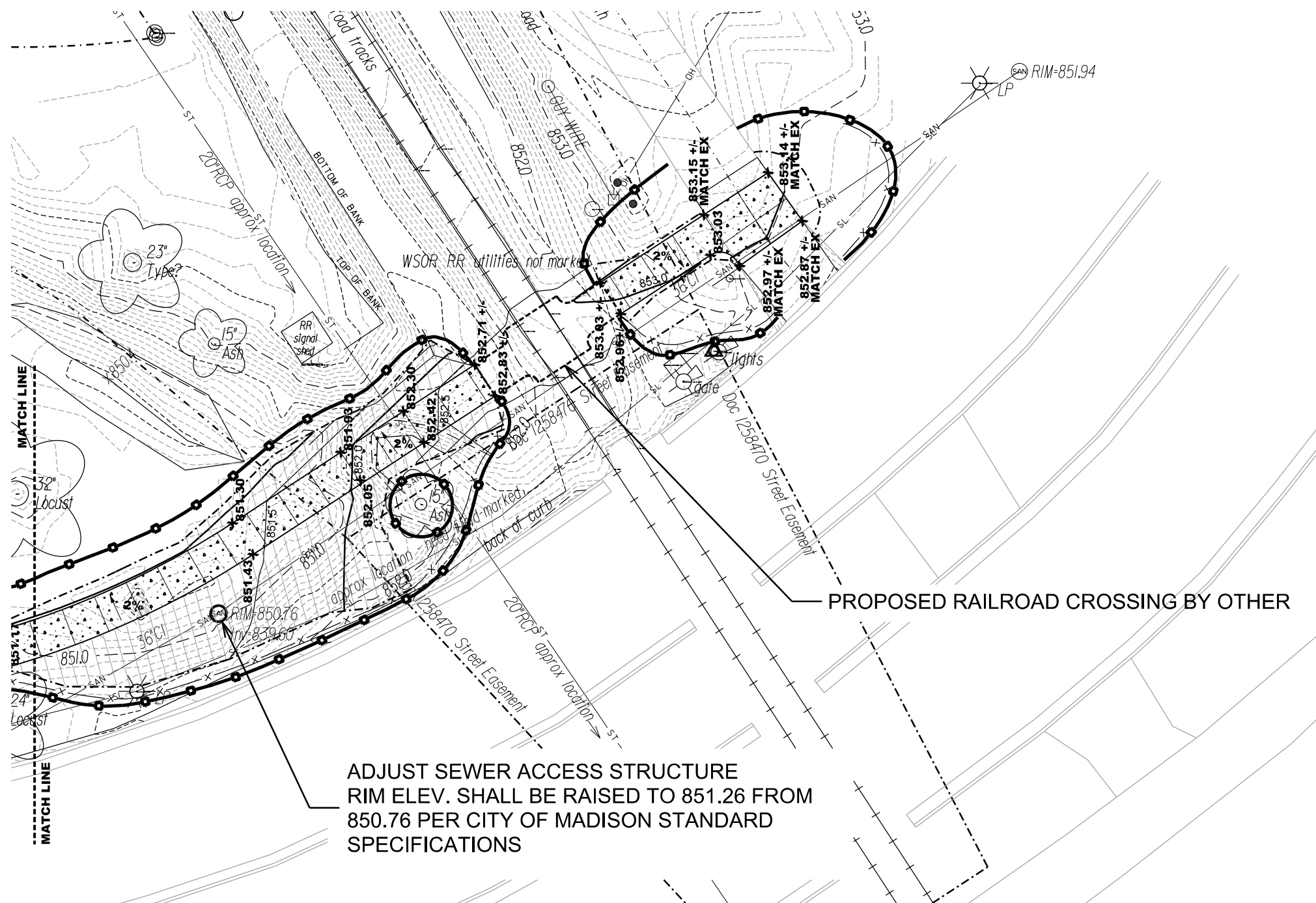
ITEM	DATE
Drawn by: MS	06-21-14
Revised by:	

Revised by:

PUBLIC WORKS PROJECT: 7325

SHEET TITLE:
**GRADING AND
EROSION CONTROL
PLAN - EAST**

SHEET NUMBER:
4.2



LEGEND

- | | | | |
|--|---|--|----------------------|
| | CONCRETE FIVE-INCH SIDEWALK | | SILT SOCK |
| | EROSION MATTING, CLASS I URBAN TYPE A - ORGANIC | | CONTOUR (INDEX) |
| | CONSTRUCTION ENTRANCE | | CONTOUR (INTER.) |
| | GRADING EXTENTS | | EX. CONTOUR (INDEX) |
| | CONSTRUCTION FENCE | | EX. CONTOUR (INTER.) |
| | | | EX. APPROX. R-O-W |

NOTES

- 1.) THE CONTRACTOR IS RESPONSIBLE FOR REPAIRING ANY EXISTING UTILITIES, STRUCTURES, SIDEWALK, CURB, LAWN, PAVEMENT, ETC. DAMAGED THROUGH CONSTRUCTION ACTIVITIES AT THEIR OWN EXPENSE. REPAIRS MUST BE MADE IN ACCORDANCE WITH THE CITY OF MADISON STANDARD SPECIFICATIONS FOR PUBLIC WORKS CONSTRUCTION.
- 2.) CONTROL POINT TO BE IDENTIFIED BY PARKS SURVEYOR.

Brittingham Park - 201 Proudfit St Path - Earthwork Quantities

City of Madison, WI Public Works Contract
Date Revised: 6/23/2014

Notes:

Positive volumes are cuts, negative volumes are fills.
Not all parts of all surface models (Digital Terrain Models) are used for computations or intended for actual construction.

Existing: Brit_Survey2014-04-03_201Proudfit.dtm ("Ex")
Proposed: Prop1.dtm ("Pro")

Sort	Group	Material	Item	From Surface Model	To Surface Model	area (sq ft)	depth (ft)	Unfactored volume (cu ft)	Unfactored volume (cu yd)	Expansion Factor (%)	Factored (Uncompacted) Volume (cu yd)
1.1	Asphalt to Asphalt	Asphalt Excavate	Remove existing bike path asphalt (assumed 3in)	n/a	n/a	36	0.25	9	0.3	0%	0.3
1.2	Asphalt to Asphalt	Asphalt Place	Place 3in bike path asphalt	n/a	n/a	36	-0.25	-9	-0.3	0%	-0.3
2.1	Asphalt to Concrete	Asphalt Excavate	Remove existing bike path asphalt (assumed 3in)	n/a	n/a	119	0.25	30	1.1	0%	1.1
2.2	Asphalt to Concrete	Gravel Excavate	Adjust existing gravel base to proposed concrete gravel base	n/a	n/a	119	0.17	20	0.7	0%	0.7
2.3	Asphalt to Concrete	Concrete Place	Place 5in concrete	n/a	n/a	119	-0.42	-50	-1.8	0%	-1.8
3.1	Concrete to Concrete	Concrete Excavate	Remove existing concrete walk	n/a	n/a	141	0.42	59	2.2	0%	2.2
3.2	Concrete to Concrete	Gravel Place	Fill gravel to proposed concrete gravel base	Ex-5in	Pro-5in	141	varies	-7	-0.3	0%	-0.3
3.3	Concrete to Concrete	Concrete Place	Place 5in concrete	n/a	n/a	129	-0.42	-54	-2.0	0%	-2.0
3.4	Concrete to Concrete	Topsoil Place	Place 5in topsoil on 6in gravel edge outside concrete	n/a	n/a	12	-0.42	-5	-0.2	0%	-0.2
4.1	Concrete to Grass	Concrete Excavate	Remove existing concrete walk	n/a	n/a	126	0.42	53	1.9	0%	1.9
4.2	Concrete to Grass	Gravel Excavate	Remove estimated 6in gravel base	n/a	n/a	126	0.50	63	2.3	0%	2.3
4.3	Concrete to Grass	Subsoil Place	Place subsoil to 6in below proposed topsoil	Ex-11in	Pro-6in	126	varies	-59	-2.2	0%	-2.2
4.4	Concrete to Grass	Topsoil Place	Place 6in topsoil	n/a	n/a	126	-0.50	-63	-2.3	0%	-2.3
5.1	Grass to Asphalt	NOT IN CONTRACT	RR CROSSING PAD - NOT IN CONTRACT	Ex	Pro	44	varies	-39	-1.5	0%	-1.5
6.1	Grass to Concrete	Topsoil Excavate	Strip 6in topsoil	n/a	n/a	3549	0.50	1775	65.7	0%	65.7
6.2	Grass to Concrete	Subsoil Excavate	Cut subsoil to path subgrade	Ex-6in	Pro-11in	3549	varies	1048	38.8	0%	38.8
6.3	Grass to Concrete	Subsoil Place	Fill subsoil to path subgrade	Ex-6in	Pro-11in	3549	varies	-129	-4.8	0%	-4.8
6.4	Grass to Concrete	Gravel Place	Place 6in gravel base, out 6in from proposed concrete walk edge	n/a	n/a	3549	-0.50	-1775	-65.7	0%	-65.7
6.5	Grass to Concrete	Concrete Place	Place 5in concrete	n/a	n/a	3033	-0.42	-1264	-46.8	0%	-46.8
6.6	Grass to Concrete	Topsoil Place	Place 5in topsoil on 6in gravel edge outside concrete	n/a	n/a	516	-0.42	-215	-8.0	0%	-8.0
7.1	Grass to Grass	Topsoil Excavate	Strip 6in topsoil	n/a	n/a	1710	0.50	855	31.7	0%	31.7
7.2	Grass to Grass	Subsoil Excavate	Cut subsoil to 6in below proposed topsoil	Ex-6in	Pro-6in	1710	varies	3	0.1	0%	0.1
7.3	Grass to Grass	Subsoil Place	Fill subsoil to 6in below proposed topsoil	Ex-6in	Pro-6in	1710	varies	-489	-18.1	0%	-18.1
7.4	Grass to Grass	Topsoil Place	Place 6in topsoil	n/a	n/a	1710	-0.50	-855	-31.7	0%	-31.7
8.1	RRbed to Asphalt	NOT IN CONTRACT	RR CROSSING PAD - NOT IN CONTRACT	Ex	Pro	169	varies	-109	-4.0	0%	-4.0
9.1	RRbed to RRbed	NOT IN CONTRACT	RR CROSSING PAD - NOT IN CONTRACT	Ex	Pro	138	varies	-34	-1.3	0%	-1.3
TOTALS								-1241	-45.9		-45.9

Date Revised: 6/23/2014

Derived from more detailed spreadsheet available from Parks Div

Computation Summary

Positive volumes are cuts (material available), negative volumes are fills (material needed)

Row Labels	Sum of Unfactored volume (cu yd)
Asphalt Excavate	1.4
Asphalt Place	-0.3
Concrete Excavate	4.1
Concrete Place	-50.6
Gravel Excavate	3.1
Gravel Place	-66.0
NOT IN CONTRACT	-6.8
Subsoil Excavate	38.9
Subsoil Place	-25.0
Topsoil Excavate	97.4
Topsoil Place	-42.4
Grand Total	-46.2

Check

Asphalt 2.16 ton/cu yd

New concrete 3281 sq ft x 5in = 1367 cu ft = 50.6 cu yd

Gravel w/ fines 1.9 ton/cu yd (compacted in place)

Net subsoil	14	surplus
Net topsoil	55	surplus

20101 Excavation Cut	145	CY	= Subsoil Excavate + Topsoil Excavate
20221 Topsoil	234	SY	= Topsoil Place/.167 (depth)
40102 Crushed Aggregate Base Course Gradation No. 2	132.0	TONS	= Gravel Place * 2.0 ton/cubic yard
40201 3" Depth HMA Pavement Type E-0.3	0.7	TONS	= Asphalt Place * 2.16 ton/cubic yard

City of Madison
Department of Public Works
PARKS DIVISION

City-County Building, Suite 104
210 Martin Luther King, Jr. Blvd.
PO Box 2987
Madison, WI 53701-2987

play
MADISON PARKS



PROJECT:

**BRITTINGHAM PARK
PAVING
IMPROVEMENTS**

**BRITTINGHAM PARK
201 PROUDFIT ST.
MADISON, WI**

Although every effort has been made in preparing these plans and checking them for accuracy, the contractor and subcontractors must check all details and dimensions of their trade and be responsible for the same.

ITEM DATE
Drawn by: MS 06-21-14

Revised by:

PUBLIC WORKS PROJECT: 7325

SHEET TITLE:
DESIGN CALCULATIONS

SHEET NUMBER:
5.1