

Madison, Wisconsin

CITY OF MADISON

CITY ENGINEERING DIVISION

DEPARTMENT OF PUBLIC WORKS

PLAN OF PROPOSED IMPROVEMENT

PUBLIC IMPROVEMENT PROJECT APPROVED

October 15th, 2013

BY THE COMMON COUNCIL OF MADISON, WISCONSIN

PUBLIC IMPROVEMENT DESIGN APPROVED BY:

[Signature] 5/29/14
City Engineer Date

SANITARY SEWER DESIGNED BY:

[Signature]
MARK D. MODER
E-33979
MADISON WI
PROFESSIONAL ENGINEER
5/29/14

STORM SEWER DESIGNED BY:

[Signature]
GREGORY J. LINDSAY
E-30659
MADISON WI
PROFESSIONAL ENGINEER
5/29/14

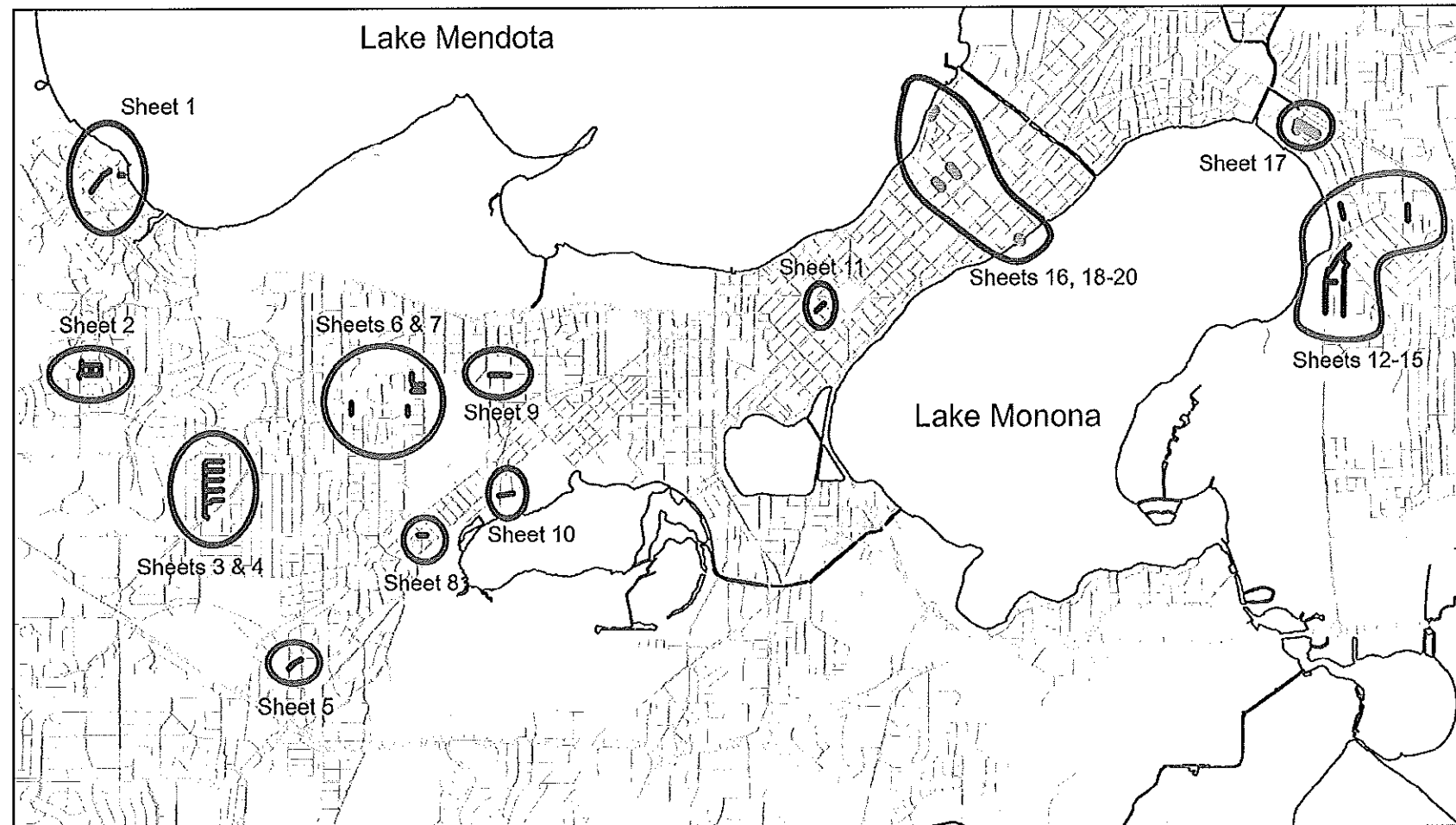
INDEX OF SHEETS

SHEET NO.	TITLE
SHEET NO. 1	DETAILED LINING LIMITS
SHEET NO. 2	SANITARY CIPP PLANS
SHEET NO. P1 - P15	STORM CIPP PLANS
SHEET NO. P16 - P20	

CIPP REHAB OF SANITARY AND STORM SEWERS 2014

CITY PROJECT NO. 53W1645

CONTRACT NO. 7341



— Sanitary CIPP Lines
 — Storm CIPP Lines

ORIGINATOR: CITY OF MADISON, SEWER OPERATIONS

CIPP REHAB OF SEWERS 2014 - DETAILED LINING LIMITS

SANITARY MAINS

STREET	UP SAS	DS SAS	DIA	LENGTH LF	MATERIAL	LATERALS	SHEET
ASCOT LN	SAS 3556-005	SAS 3556-002	8	251	VP	6	3
ASCOT LN	SAS 3556-006	SAS 3556-005	8	238	VP	8*	3
BUCKEYE RD	SAS 6348-008	SAS 6347-018	8	257	VP	5***	14
CAPITAL AVE	SAS 3246-008	SAS 3245-012	6	397	VP	6	1
CAPITAL AVE	SAS 3245-012	SAS 3245-015	8	265	VP	3	1
CAPITAL AVE	SAS 3246-007	SAS 3246-008	6	257	VP	3	1
CHEROKEE DR	SAS 3763-017	SAS 3763-016	10	244	VP	1*	5
CHEROKEE DR	SAS 3763-013	SAS 3763-017	10	243	VP	1	5
CLAIRE ST	SAS 6546-011	SAS 6546-012	8	243	VP	8*	13
CLAIRE ST	SAS 6546-012	SAS 6547-002	8	238	VP	4	13
DAVIDSON ST	SAS 6346-004	SAS 6346-005	8	52	VP	0	12
GLEN HWY	SAS 3252-017	SAS 3252-014	8	203	VP	5	2
GLEN HWY	SAS 3253-003	SAS 3252-017	8	112	VP	0	2
GLENWAY ST	SAS 4058-023	SAS 4058-022	12	276	VP	4	8
GROTON LN	SAS 3556-010	SAS 3556-003	8	290	VP	6	3
GROTON LN	SAS 3556-008	SAS 3556-010	8	251	VP	4	3
HILLCREST DR	SAS 3854-008	SAS 3854-006	6	363	VP	4	6
HILLCREST DR	SAS 4054-004	SAS 4054-005	6	246	VP	3	7
HILTON DR	SAS 3556-007	SAS 3556-006	8	78	VP	0	3
HILTON DR	SAS 3556-008	SAS 3556-007	8	232	VP	3	3
HILTON DR	SAS 3556-008	SAS 3556-009	8	300	VP	5	3
HILTON DR	SAS 3557-002	SAS 3556-009	8	327	VP	4*	3
HILTON DR	SAS 3557-002	SAS 3557-003	8	280	VP	5	4
HILTON DR	SAS 3557-003	SAS 3557-014	8	275	VP	4	4
HILTON DR	SAS 3557-014	SAS 3558-001	8	277	VP	4	4
JEROME ST	SAS 6349-005	SAS 6348-004	8	396	VP	6	14
JEROME ST	SAS 6348-004	SAS 6348-005	8	180	VP	1	14
JEROME ST	SAS 6348-005	SAS 6348-006	8	252	VP	2	14
JEROME ST	SAS 6348-006	SAS 6348-007	8	138	VP	0	14
JEROME ST	SAS 6350-004	SAS 6349-003	8	298	VP	6	15
JEROME ST	SAS 6349-003	SAS 6349-004	8	295	VP	7	15
JEROME ST	SAS 6349-004	SAS 6349-005	8	224	VP	3	15
JEROME ST	SAS 6350-007	SAS 6350-004	8	236	VP	4	15
LAKE MENDOTA DR	SAS 3245-001	SAS 3245-020	6	130	CI	0	1
LAUB LN	SAS 3557-016	SAS 3557-015	8	268	VP	4	4
LAUB LN	SAS 3557-017	SAS 3557-016	8	127	VP	2	4
MARK TWAIN ST	SAS 3252-013	SAS 3252-012	8	299	VP	2	2
MARK TWAIN ST	SAS 3252-014	SAS 3252-013	8	306	VP	5	2
MARK TWAIN ST	SAS 3252-016	SAS 3252-013	8	201	VP	5	2
MIFFLIN ST	SAS 5050-058	SAS 5050-023	12	323	VP	6	11
MONONA DR	SAS 6348-007	SAS 6348-008	8	136	VP	0	14
MONONA DR	SAS 6348-009	SAS 6348-008	8	344	VP	3	14

SANITARY MAINS

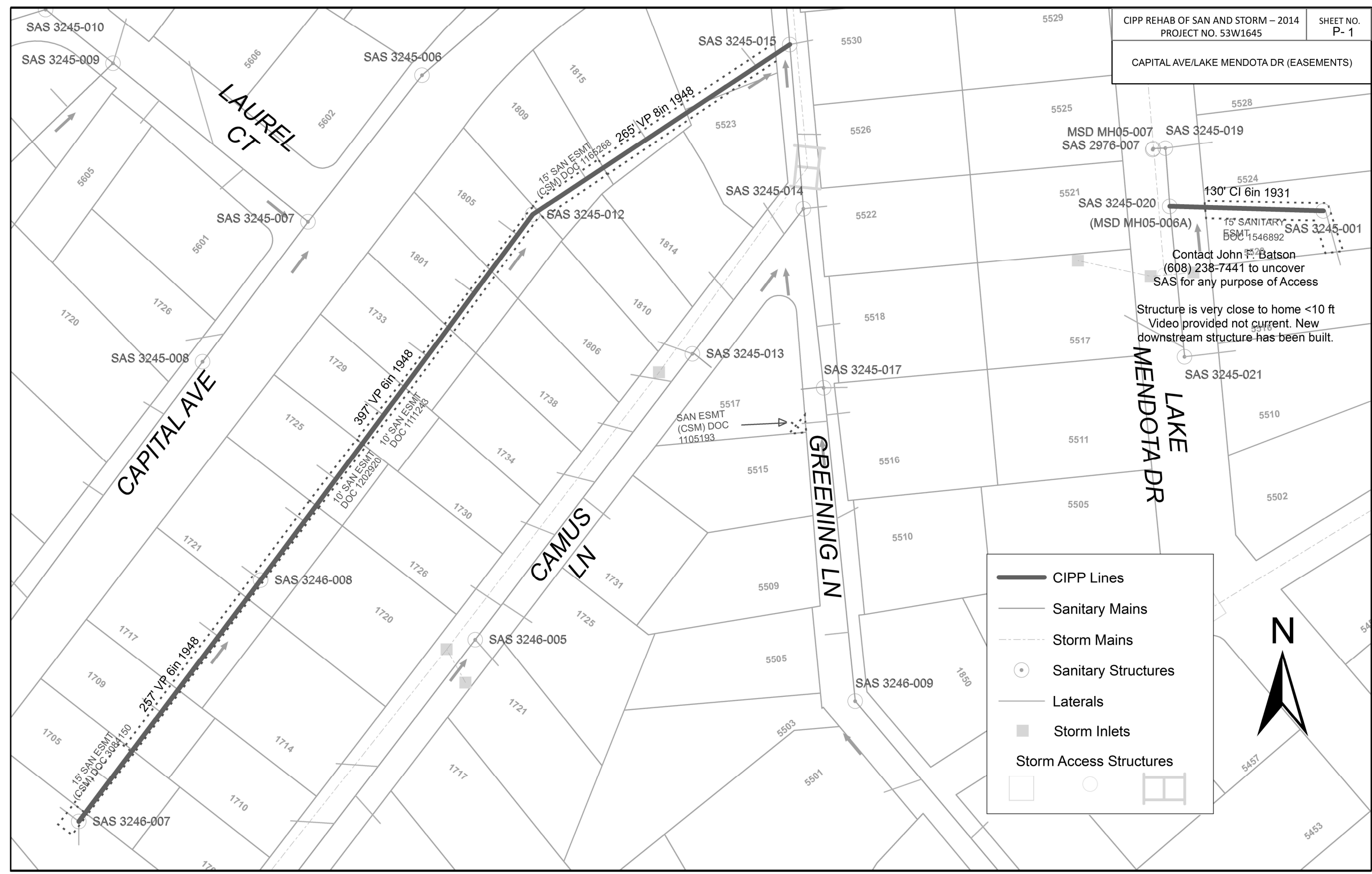
STREET	UP SAS	DS SAS	DIA	LENGTH LF	MATERIAL	LATERALS	SHEET
MONONA DR	SAS 6348-010	SAS 6348-009	8	215	VP	2	14
MONONA DR	SAS 6348-011	SAS 6348-010	8	218	VP	2	14
MONONA DR	SAS 6348-012	SAS 6348-011	8	76	VP	0	14
MONONA DR	SAS 6349-009	SAS 6349-007	8	325	VP	2	15
MONONA DR	SAS 6350-005	SAS 6349-009	8	398	VP	4	15
MONONA DR	SAS 6350-006	SAS 6350-005	8	238	VP	1	15
MONONA DR (easement)	SAS 6346-005	SAS 6346-006	8	396	VP	4	12
MONONA DR	SAS 6349-010	SAS 6348-012	8	392	VP	3	14
PHILLIP LN	SAS 3557-004	SAS 3557-001	8	299	VP	6	4
PHILLIP LN	SAS 3557-002	SAS 3557-004	8	235	VP	6	4
REGENT ST	SAS 3253-001	SAS 3253-002	8	235	VP	2	2
REGENT ST	SAS 3253-002	SAS 3253-003	8	240	VP	2	2
REGENT ST	SAS 4053-004	SAS 4053-002	6	197	VP	2	7
REGENT ST	SAS 4253-003	SAS 4253-002	8	229	VP	3	9
REGENT ST	SAS 4253-004	SAS 4253-003	8	225	VP	3	9
REGENT ST	SAS 4253-002	SAS 4253-009	8	195	VP	2	9
RIDGE RD	SAS 4053-011	SAS 4053-010	6	378	VP	7	7
ROSA RD	SAS 3153-010	SAS 3153-011	8	104	VP	0	2
ROSA RD	SAS 3252-012	SAS 3252-011	8	126	VP	1	2
ROSA RD	SAS 3252-015	SAS 3252-012	8	203	VP	4	2
ROSA RD	SAS 3153-011	SAS 3252-015	8	99	VP	0	2
SEGOE RD	SAS 3558-001	SAS 3558-002	8	98	VP	0	4
TERRY PL	SAS 4257-022	SAS 4257-018	8	199	VP	0	10
TERRY PL	SAS 4257-018	SAS 4257-025	8	262	VP	1	10
TOCORA LN	SAS 3556-011	SAS 3556-004	8	231	VP	4*	3
TOCORA LN	SAS 3556-009	SAS 3556-011	8	306	VP	5	3
WINNEQUAH RD	SAS 6349-006	SAS 6349-007	8	331	VP	2	15
WINNEQUAH RD	SAS 6349-007	SAS 6349-010	8	34	VP	0	15

STORM MAINS

STREET	US STRUCTURE	DS STRUCTURE	DIA	LENGTH (LF)	MATERIAL	LATERALS	SHEET
BREARLY	AS 5345-019	IN 5346-156	15	264	VP	1	16
INGERSOLL	AS 5345-040	IN 5345-055	18	95	VP	0	19
INGERSOLL	IN 5345-055	AS 5345-025	18	227	VP	1	19
INGERSOLL	IN 5547-027	Lake Monona	21	113	RCP	0	18
JOHNS	AS 6243-010	AS 6243-018	24	152	VP	1	17
JOHNS	AS 6243-018	AS 6243-037	24	147	VP	0	17
JOHNS	AS 6243-030	AS 6243-029	24	205	VP	1	17
JOHNS	AS 6243-037	AS 6243-030	24	137	VP	0	17
SHERMAN	AS 5243-119	IN 5243-001	12	40	VP	0	20
SHERMAN	AS 5343-118	AS 5243-119	12	216	VP	0	20
WALTER	AS 6243-027	AS 6243-002	18	210	VP	0	17
WALTER	AS 6243-029	AS 6243-002	24	48	VP	0	17

*Number of asterisks denotes the number of intruding taps

ORIGINATOR: CITY OF MADISON, SEWER OPERATIONS

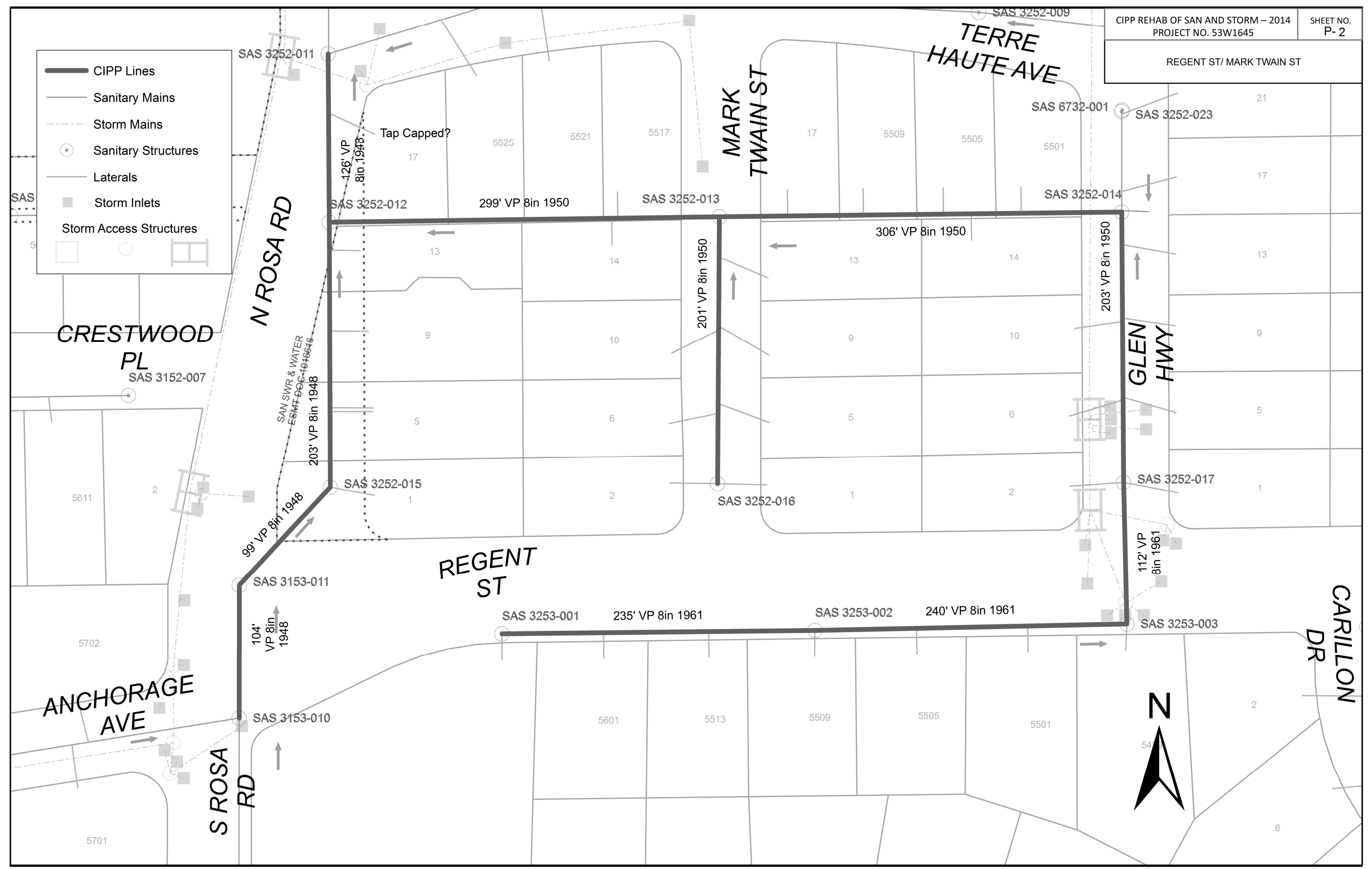


Contact John F. Batson
 (608) 238-7441 to uncover
 SAS for any purpose of Access
 Structure is very close to home <10 ft
 Video provided not current. New
 downstream structure has been built.

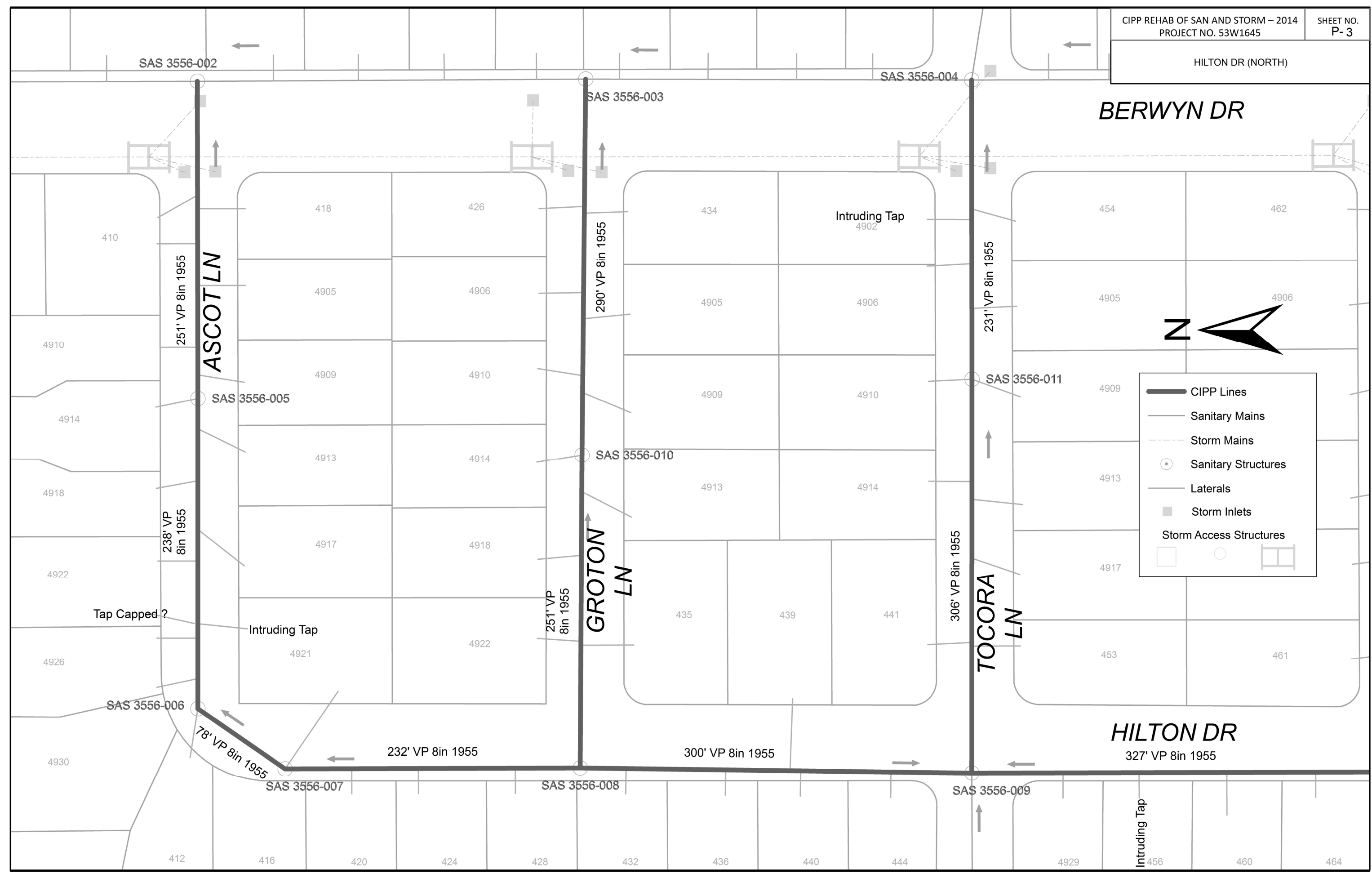
ORIGINATOR: CITY OF MADISON, SEWER OPERATIONS

Legend

- CIPP Lines
- Sanitary Mains
- Storm Mains
- Sanitary Structures
- Laterals
- Storm Inlets
- Storm Access Structures



ORIGINATOR: CITY OF MADISON, SEWER OPERATIONS

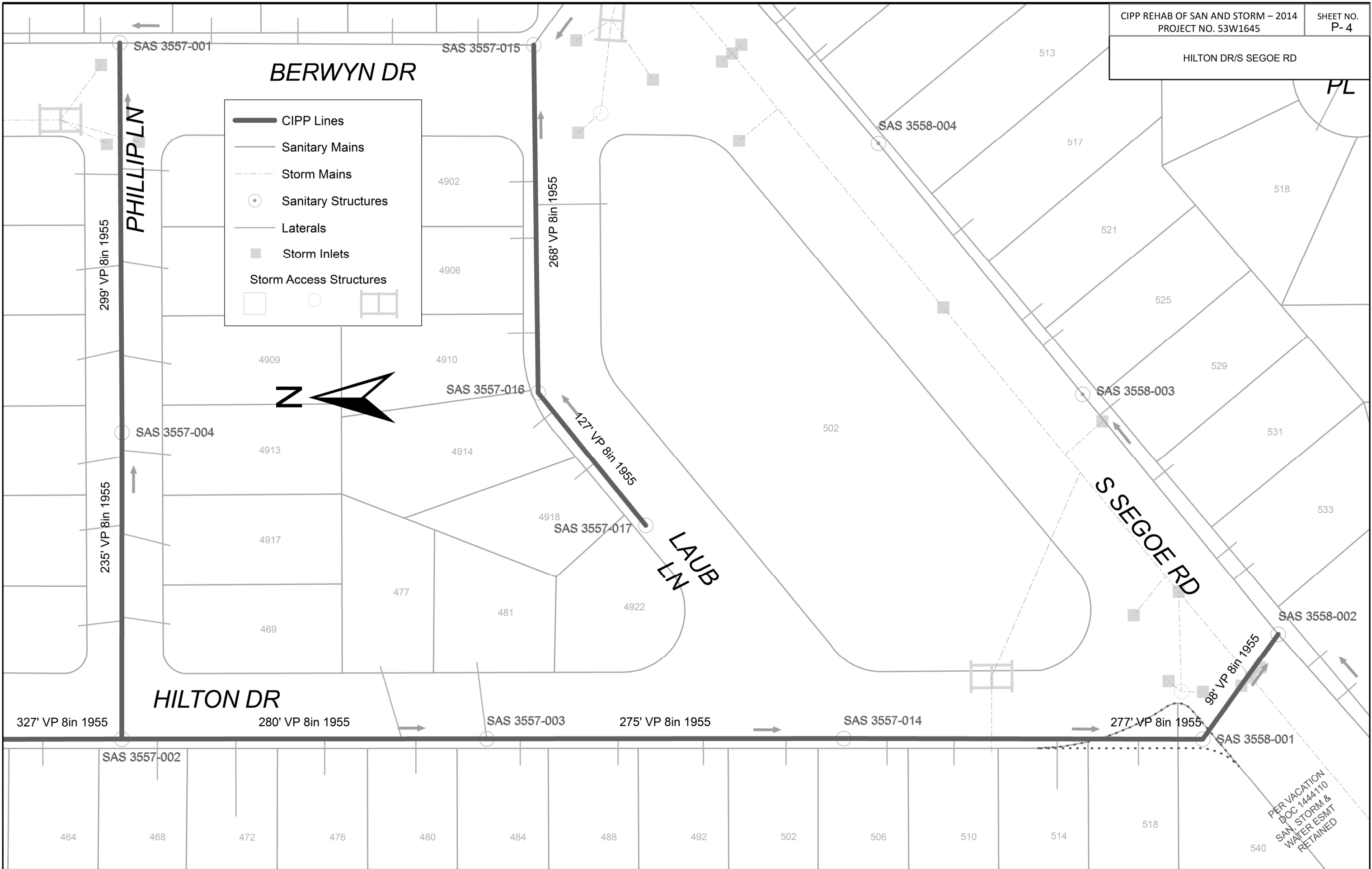
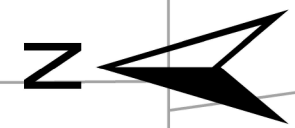


	CIPP Lines
	Sanitary Mains
	Storm Mains
	Sanitary Structures
	Laterals
	Storm Inlets
	Storm Access Structures

ORIGINATOR: CITY OF MADISON, SEWER OPERATIONS

Legend

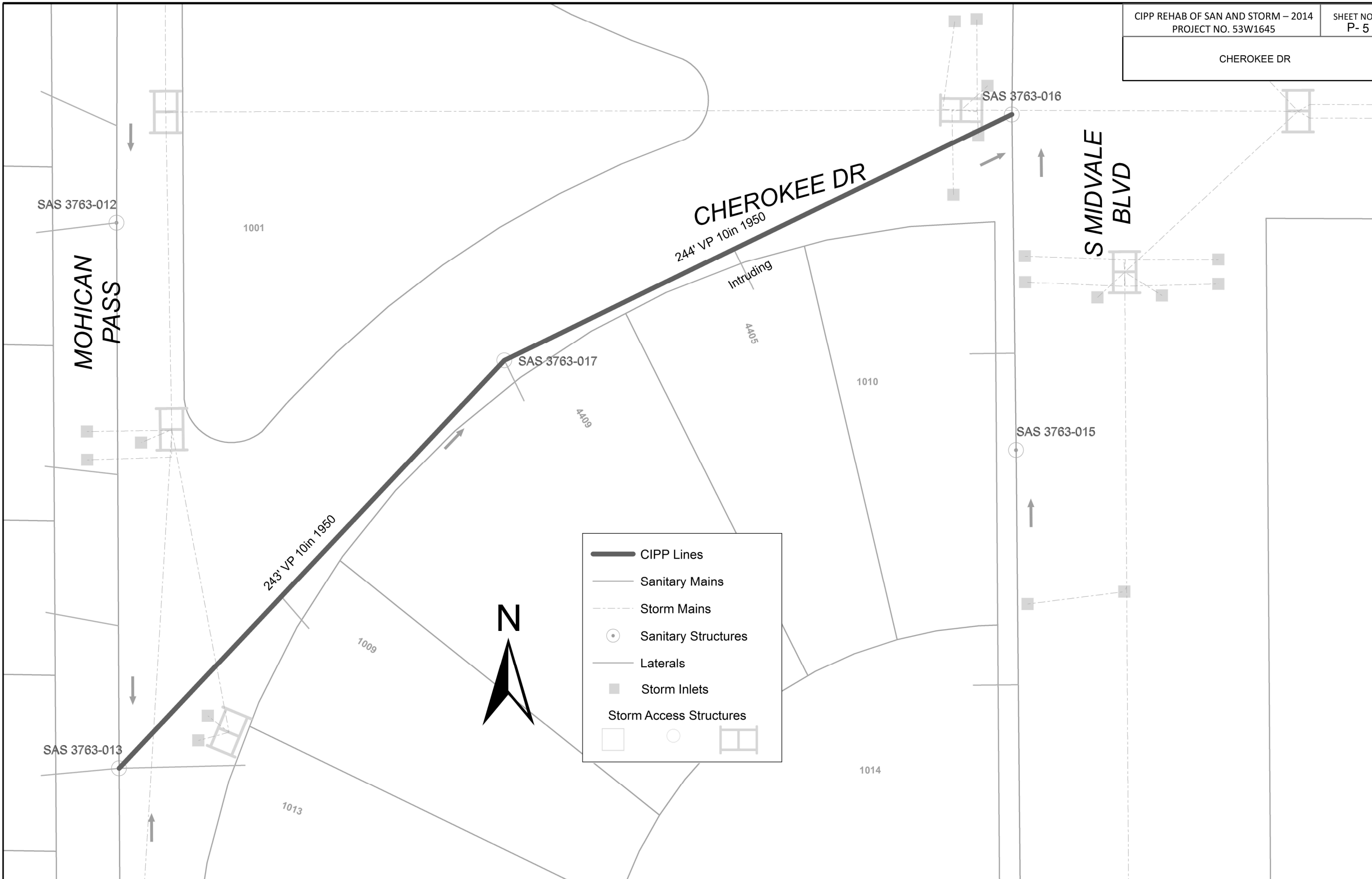
- CIPP Lines
- Sanitary Mains
- Storm Mains
- Sanitary Structures
- Laterals
- Storm Inlets
- Storm Access Structures



ORIGINATOR: CITY OF MADISON, SEWER OPERATIONS

PER VACATION
 DOC 1444110
 SAN STORM &
 WATER ESMT
 RETAINED

CHEROKEE DR



	CIPP Lines
	Sanitary Mains
	Storm Mains
	Sanitary Structures
	Laterals
	Storm Inlets
	Storm Access Structures



ORIGINATOR: CITY OF MADISON, SEWER OPERATIONS

SAS 3854-009

CIPP REHAB OF SAN AND STORM - 2014
PROJECT NO. 53W1645

SHEET NO.
P- 6

HILLCREST DR/VAUGHN CT (EASEMENT)

VAUGHN CT

106

110

114

118

4122

DOC
0641696

DOC.0641695

DOC
0641693

363' VP 6in 1941

DOC
0641696

30'
SANITARY SEWER EASEMENT

DOC
0641697

DOC 0641694

SAS 3854-008

SAS 3854-006

HILLCREST
DR

ORIGINATOR: CITY OF MADISON, SEWER OPERATIONS

	CIPP Lines
	Sanitary Mains
	Storm Mains
	Sanitary Structures
	Laterals
	Storm Inlets
	Storm Access Structures



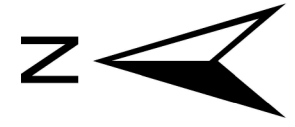
4210

4206

4202

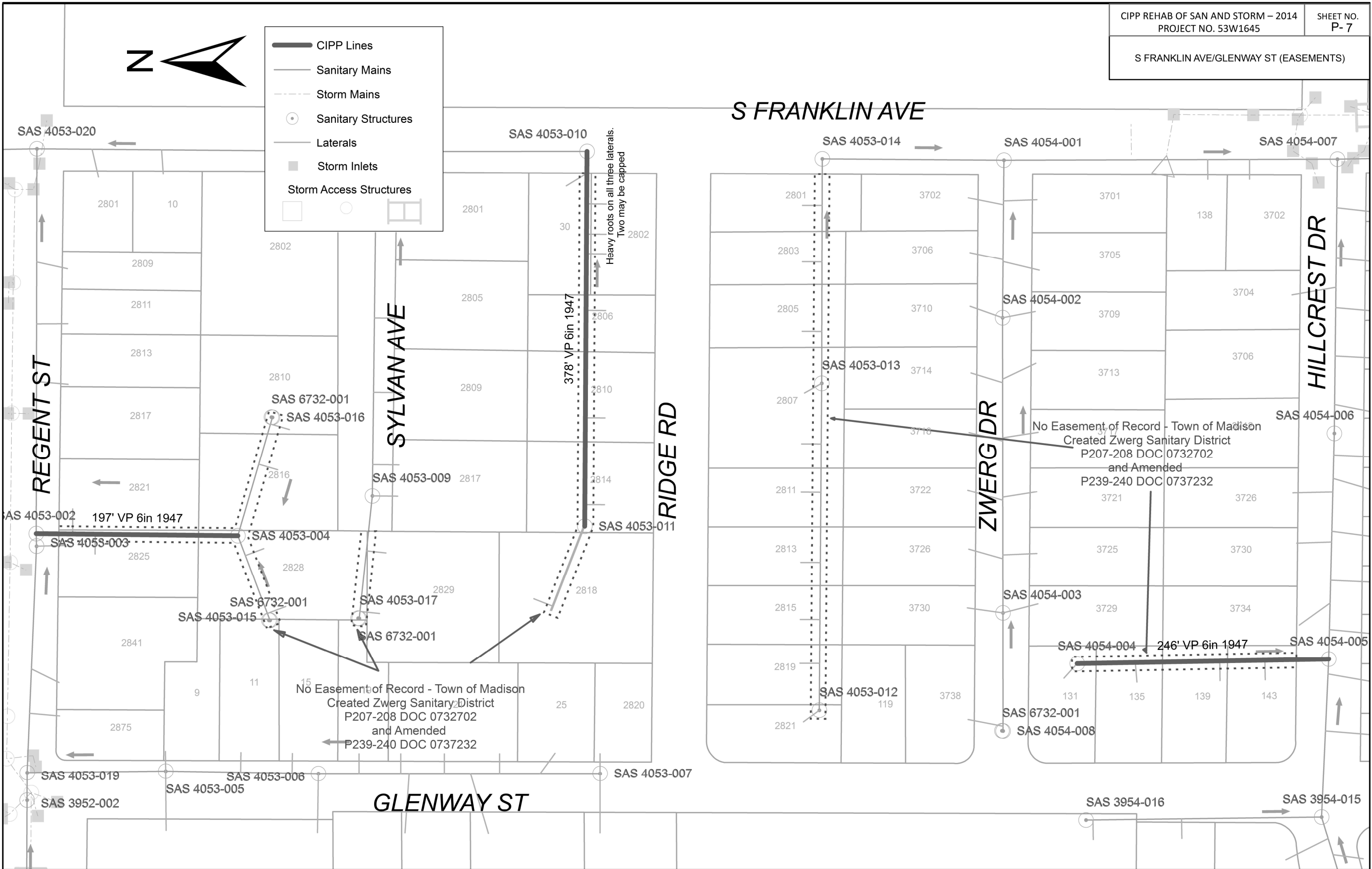
SAS 3854-011

BAGLEY PKY

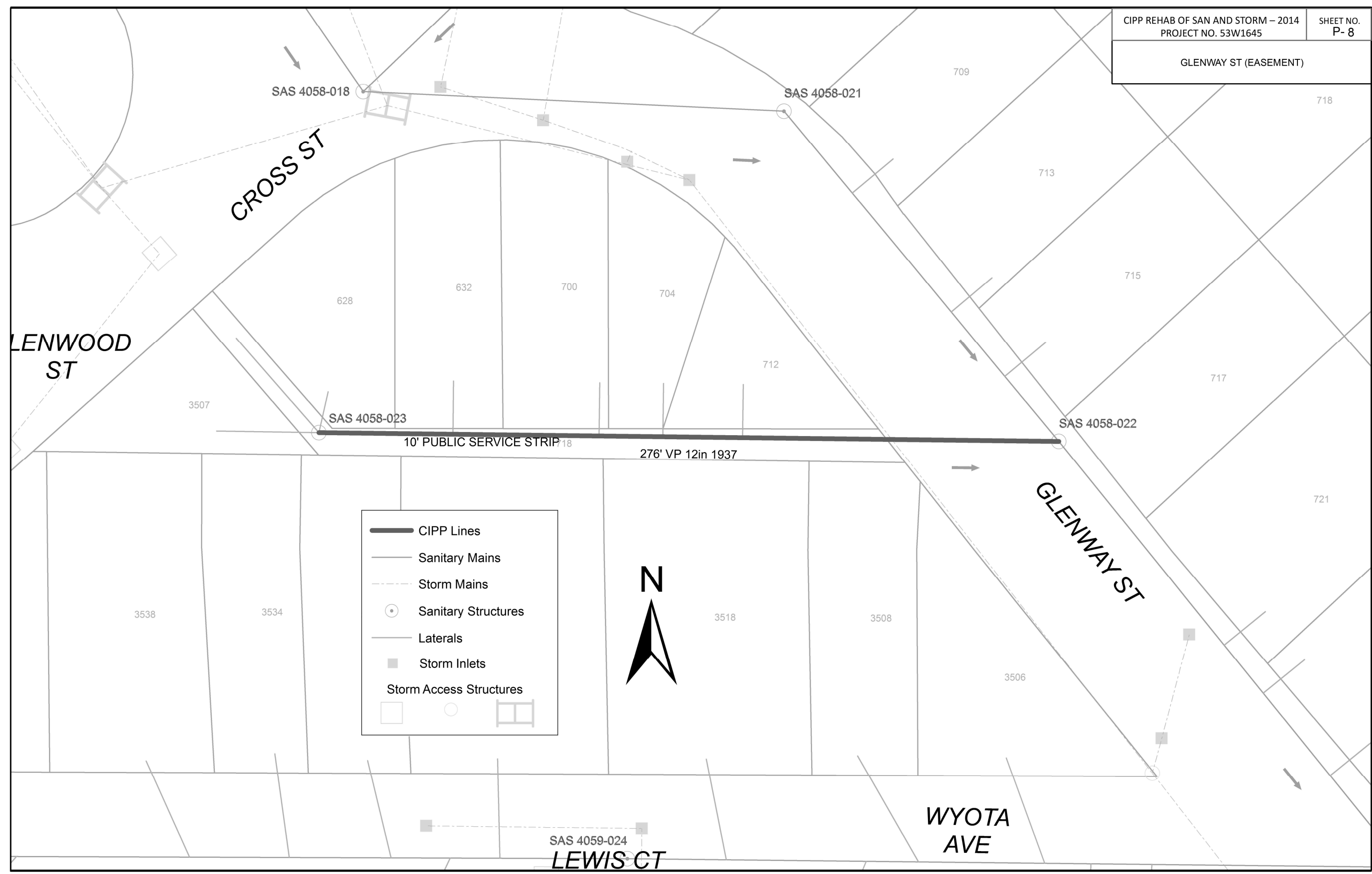


Legend

- CIPP Lines
- Sanitary Mains
- - - Storm Mains
- Sanitary Structures
- Laterals
- Storm Inlets
- Storm Access Structures





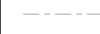




ORIGINATOR: CITY OF MADISON, SEWER OPERATIONS

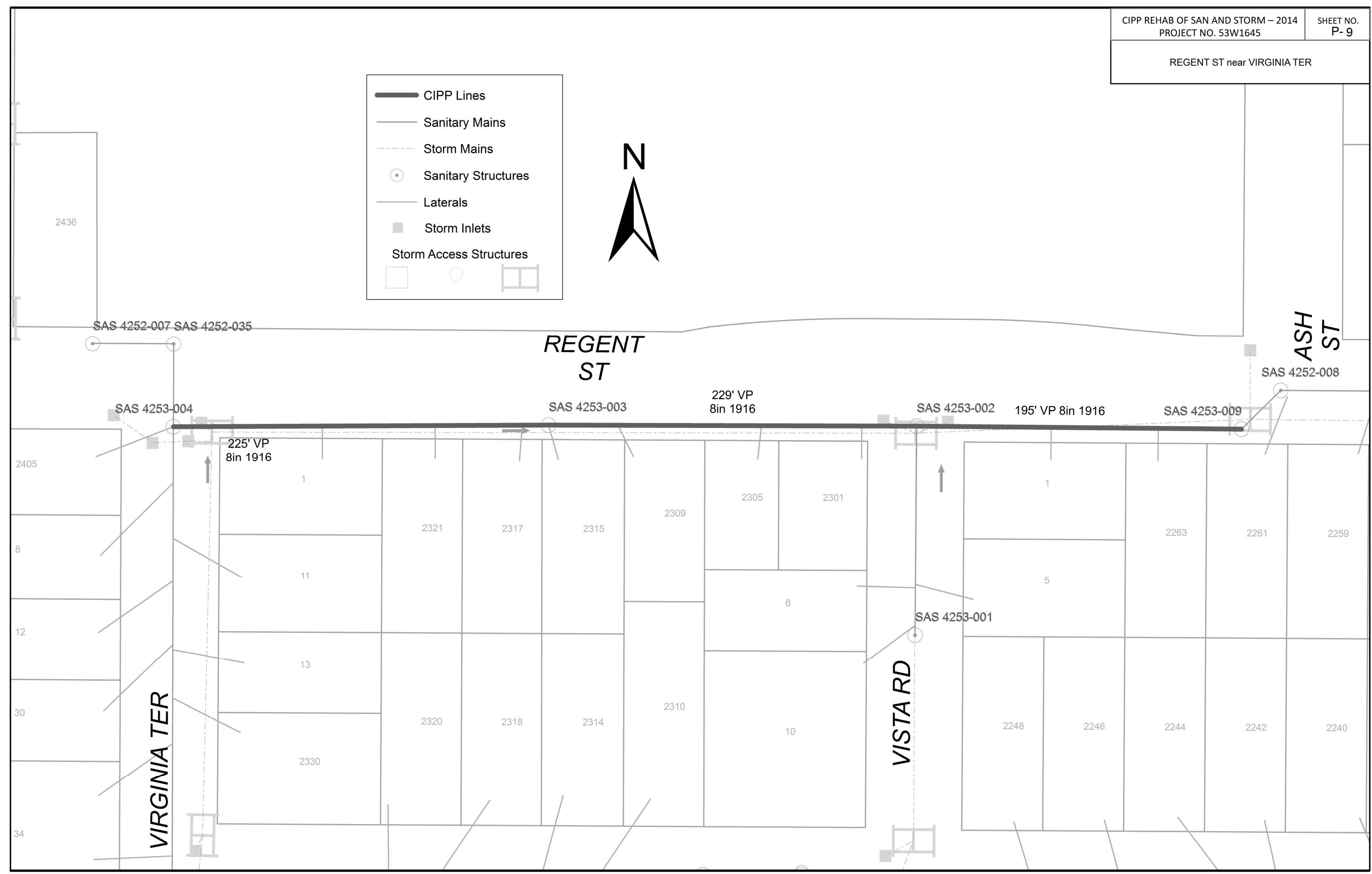


	CIPP Lines
	Sanitary Mains
	Storm Mains
	Sanitary Structures
	Laterals
	Storm Inlets
	Storm Access Structures

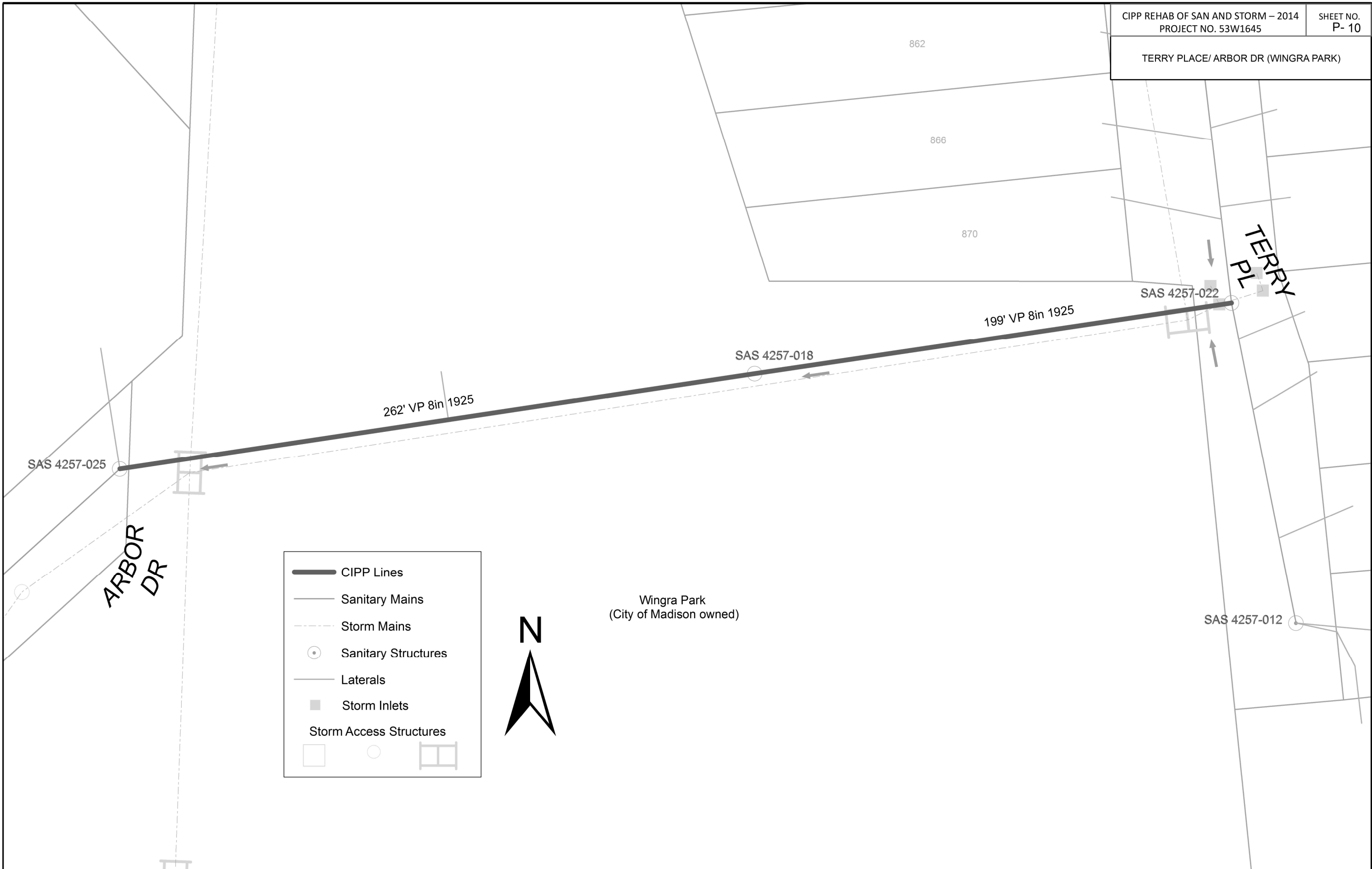


ORIGINATOR: CITY OF MADISON, SEWER OPERATIONS

 CIPP Lines
 Sanitary Mains
 Storm Mains
 Sanitary Structures
 Laterals
 Storm Inlets
 Storm Access Structures



ORIGINATOR: CITY OF MADISON, SEWER OPERATIONS










	CIPP Lines
	Sanitary Mains
	Storm Mains
	Sanitary Structures
	Laterals
	Storm Inlets
	Storm Access Structures



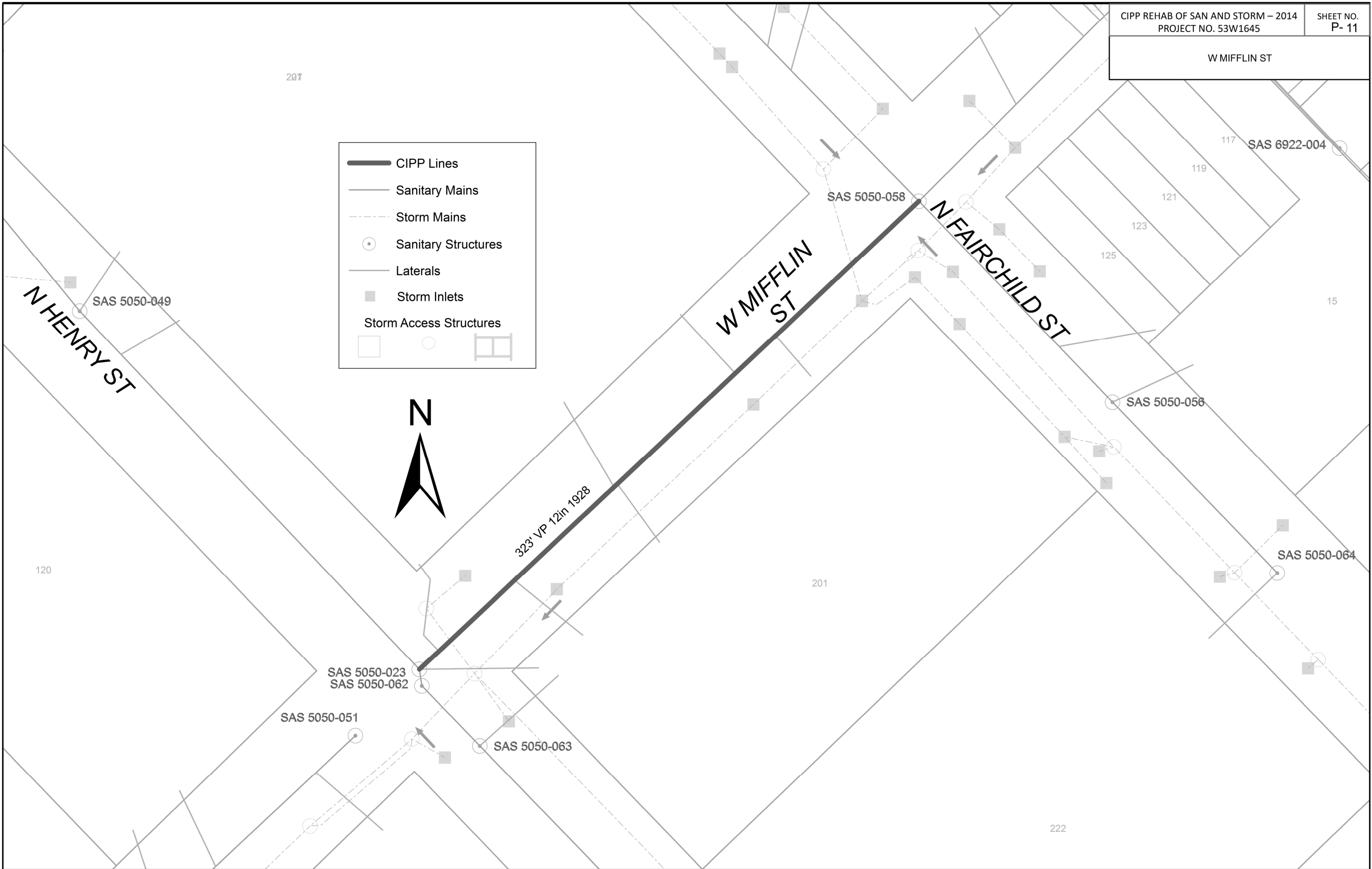
Wingra Park
(City of Madison owned)

ORIGINATOR: CITY OF MADISON, SEWER OPERATIONS

	CIPP Lines
	Sanitary Mains
	Storm Mains
	Sanitary Structures
	Laterals
	Storm Inlets
	Storm Access Structures

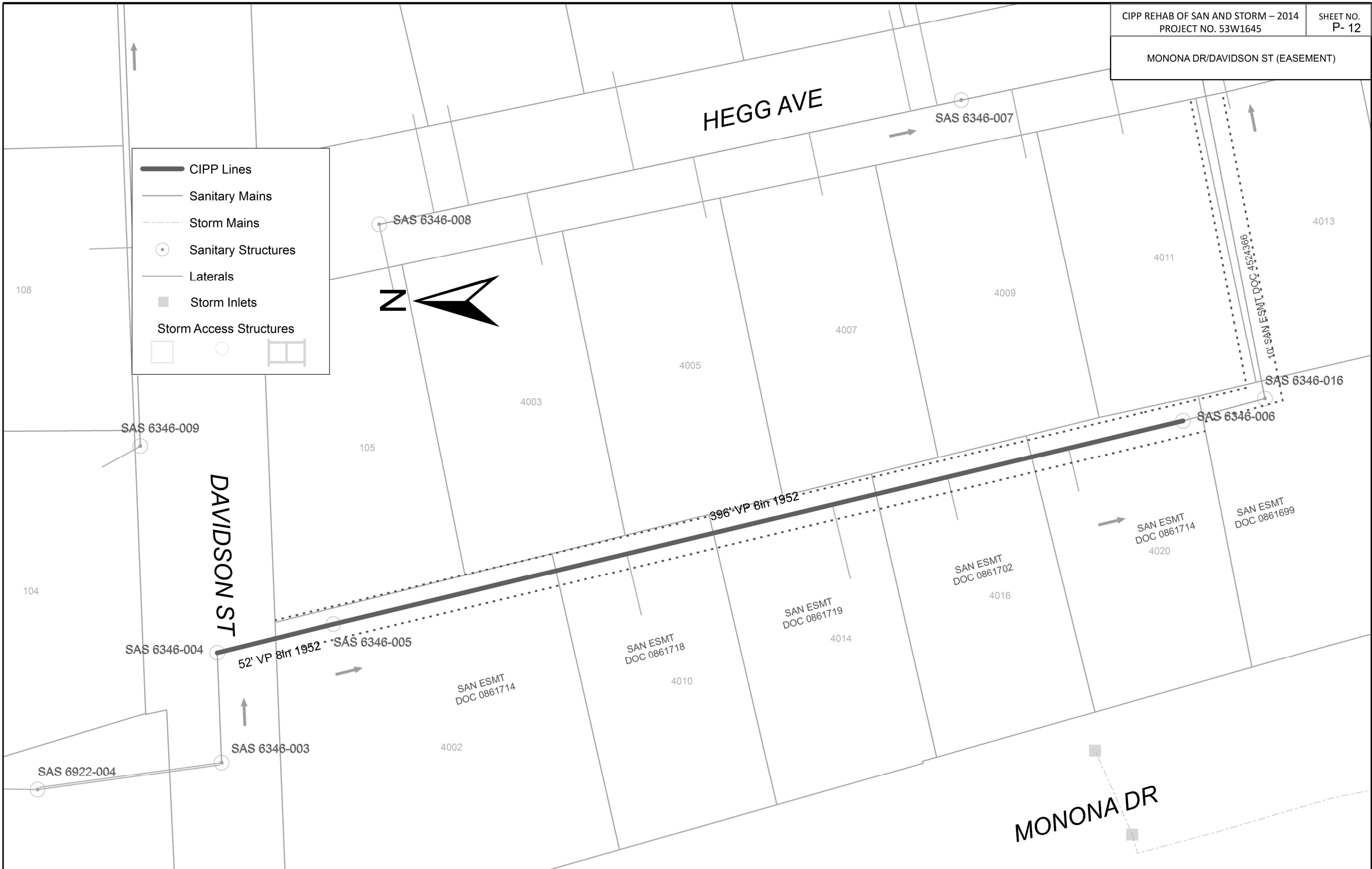


323' VP 12in 1928



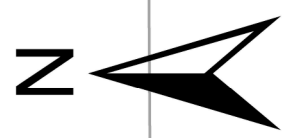
ORIGINATOR: CITY OF MADISON, SEWER OPERATIONS

	CIPP Lines
	Sanitary Mains
	Storm Mains
	Sanitary Structures
	Laterals
	Storm Inlets
	Storm Access Structures



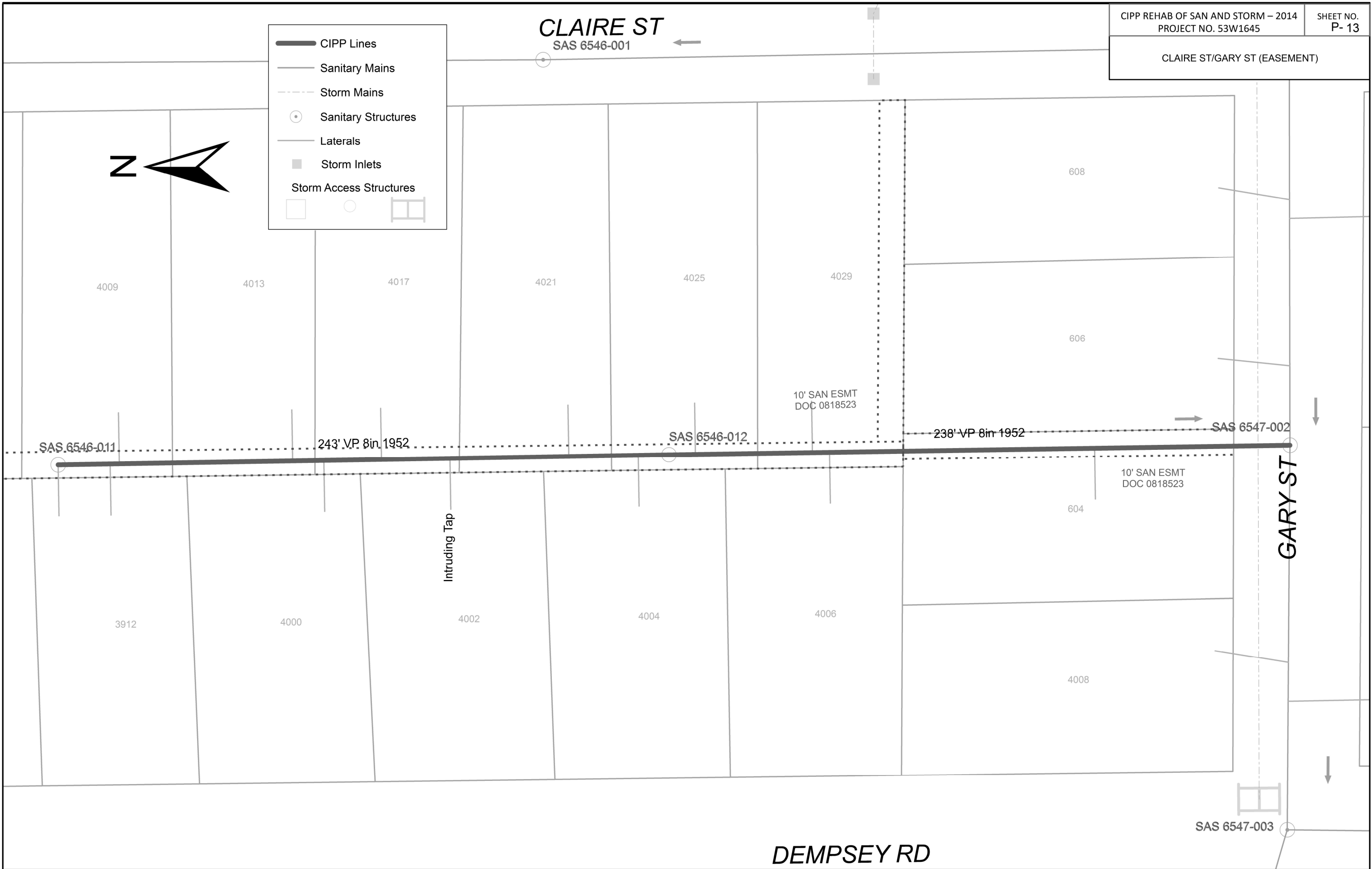
ORIGINATOR: CITY OF MADISON, SEWER OPERATIONS

CLAIRE ST
 SAS 6546-001



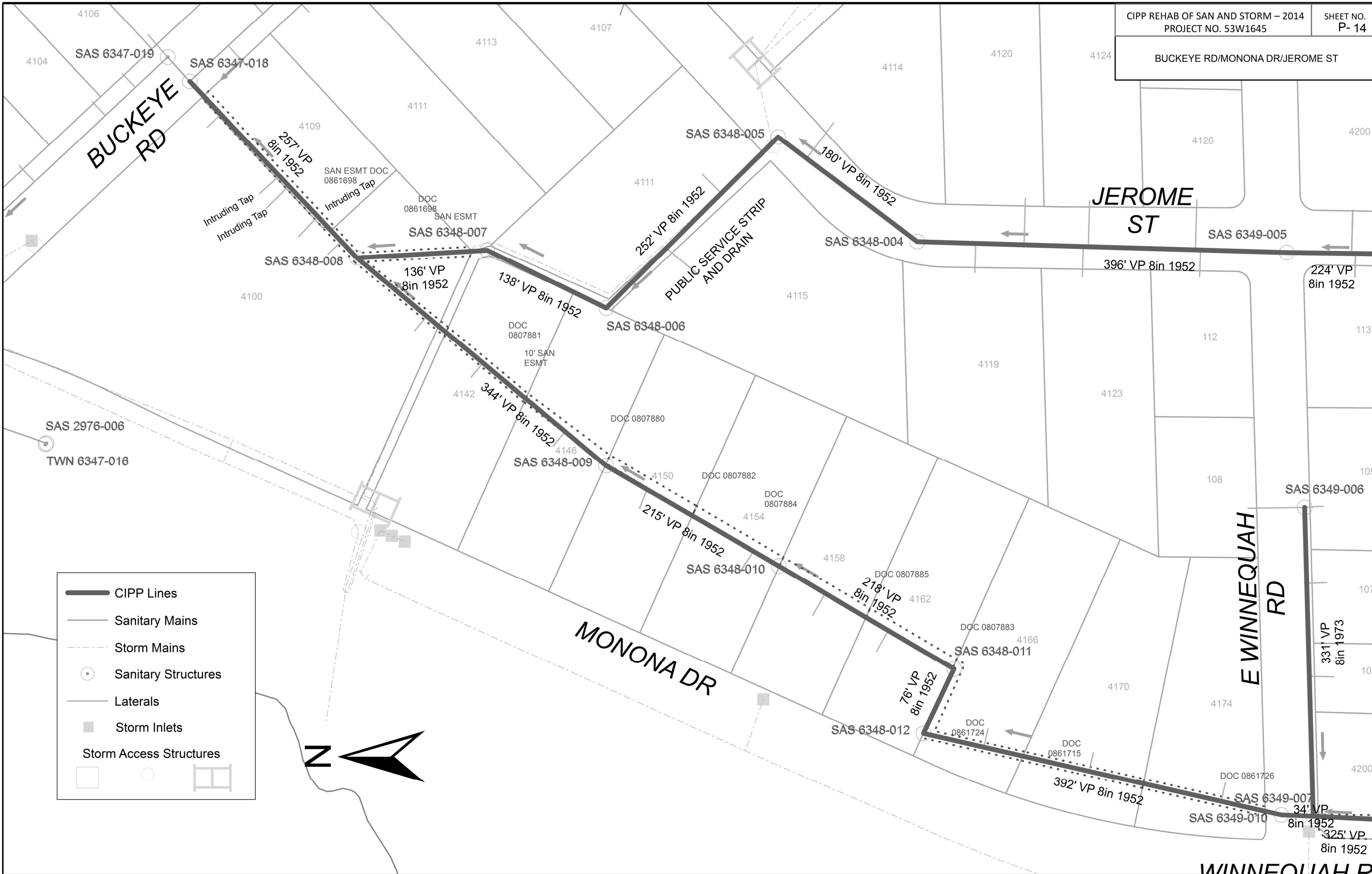
Legend:

- CIPP Lines
- Sanitary Mains
- - - Storm Mains
- Sanitary Structures
- Laterals
- Storm Inlets
- Storm Access Structures



DEMPSEY RD

ORIGINATOR: CITY OF MADISON, SEWER OPERATIONS



	CIPP Lines
	Sanitary Mains
	Storm Mains
	Sanitary Structures
	Laterals
	Storm Inlets
	Storm Access Structures



ORIGINATOR: CITY OF MADISON, SEWER OPERATIONS

JEROME ST

SAS 6350-007

396' VP 8in 1952 SAS 6349-005 224' VP 8in 1952

SAS 6349-004

295' VP 8in 1952

SAS 6349-003

298' VP 8in 1952

SAS 6350-004

236' VP 8in 1952

E COLDSP

E WINNEQUAH RD



	CIPP Lines
	Sanitary Mains
	Storm Mains
	Sanitary Structures
	Laterals
	Storm Inlets
	Storm Access Structures

SAS 6349-006

331' VP 8in 1973

107

105

4202

4204

4206

4300

4304

4308

4312

4200

325' VP 8in 1952

SAS 6349-009

398' VP 8in 1952










SAS 6350-005

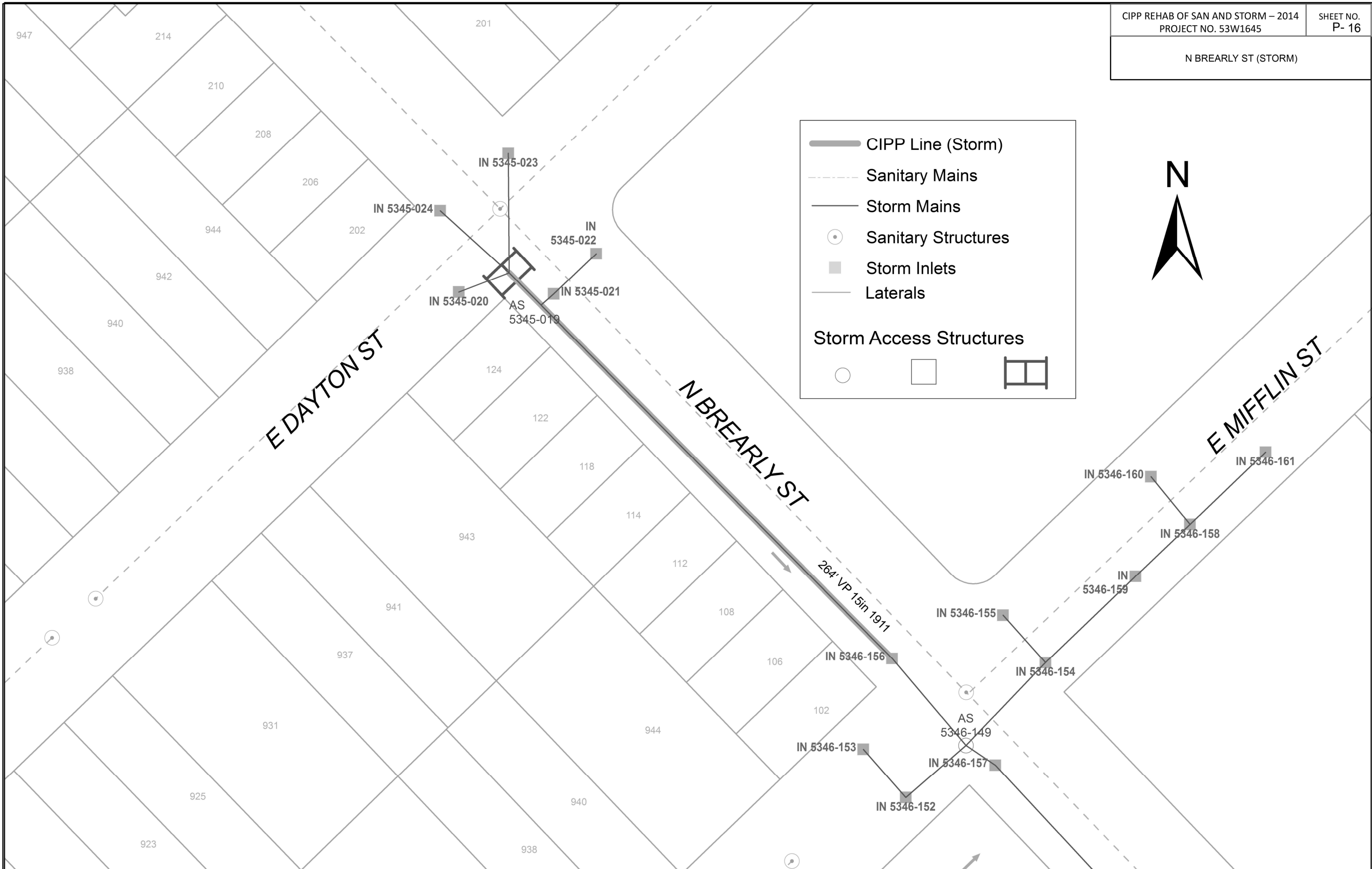
238' VP 8in 1952

SAS 6349-010

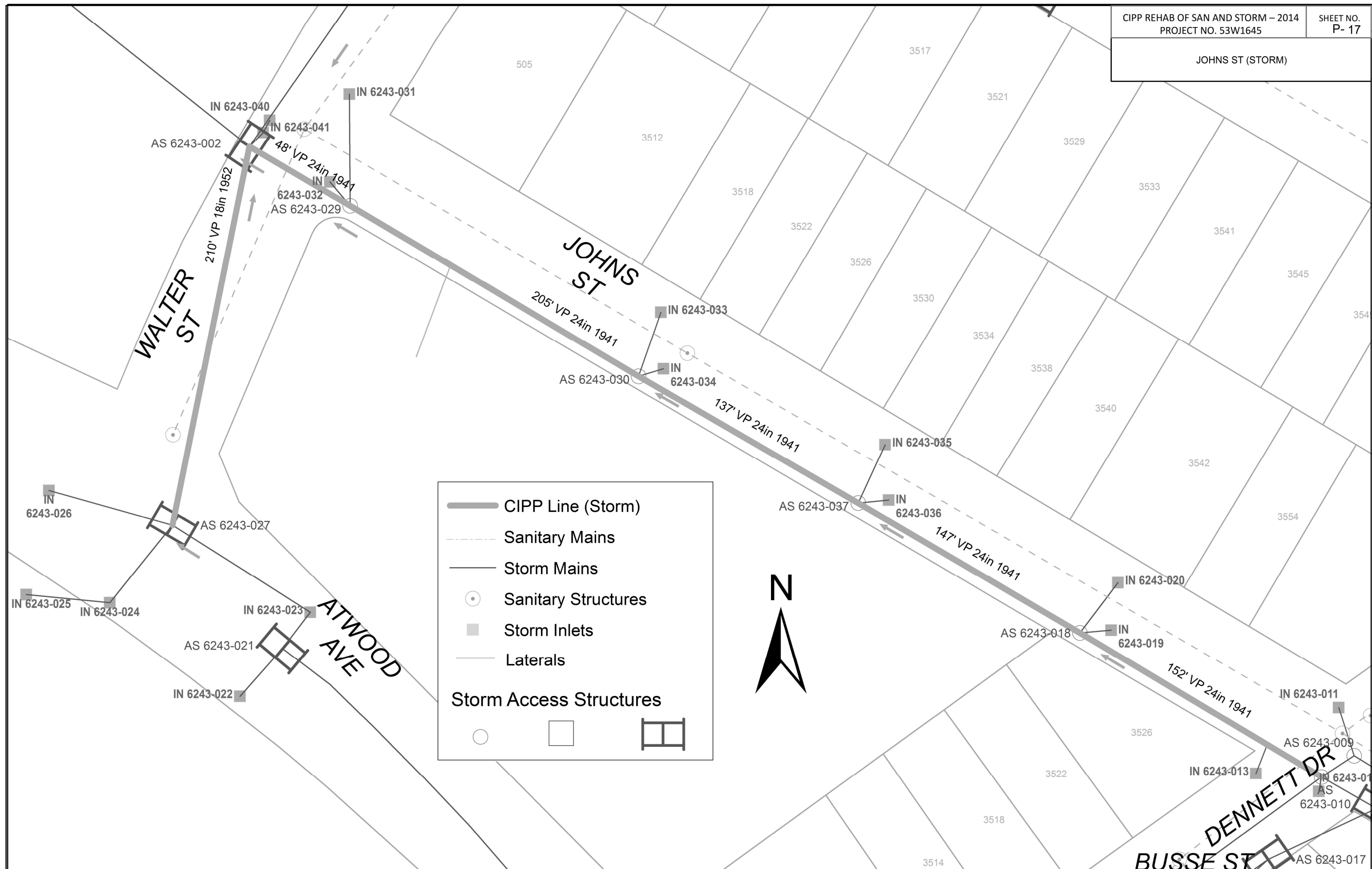
SAS 6350-006

ORIGINATOR: CITY OF MADISON, SEWER OPERATIONS

	CIPP Line (Storm)
	Sanitary Mains
	Storm Mains
	Sanitary Structures
	Storm Inlets
	Laterals
Storm Access Structures	
	
	
	



ORIGINATOR: CITY OF MADISON, SEWER OPERATIONS



	CIPP Line (Storm)
	Sanitary Mains
	Storm Mains
	Sanitary Structures
	Storm Inlets
	Laterals
Storm Access Structures	



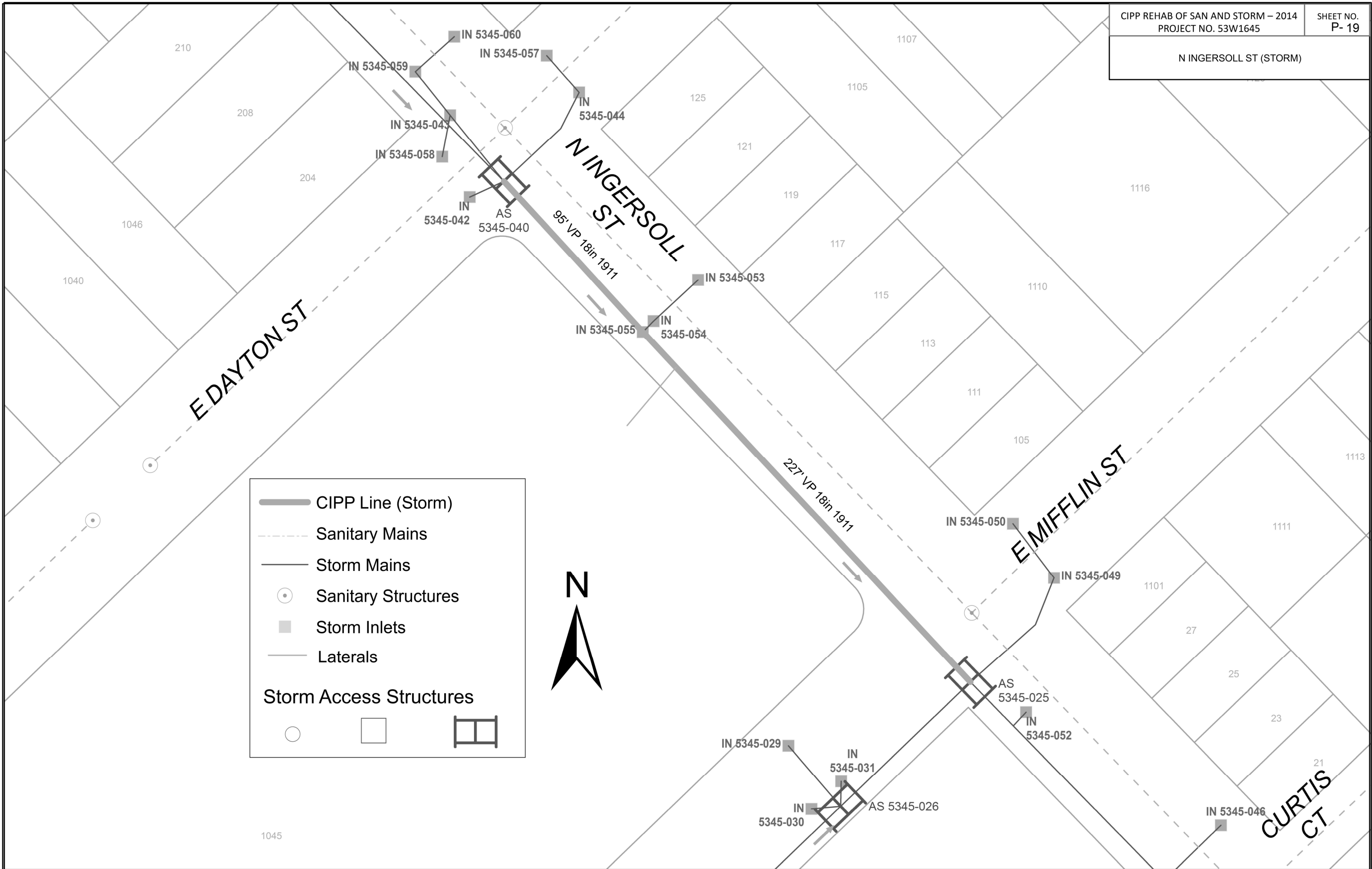
ORIGINATOR: CITY OF MADISON, SEWER OPERATIONS



	CIPP Line (Storm)
	Sanitary Mains
	Storm Mains
	Sanitary Structures
	Storm Inlets
	Laterals
Storm Access Structures	



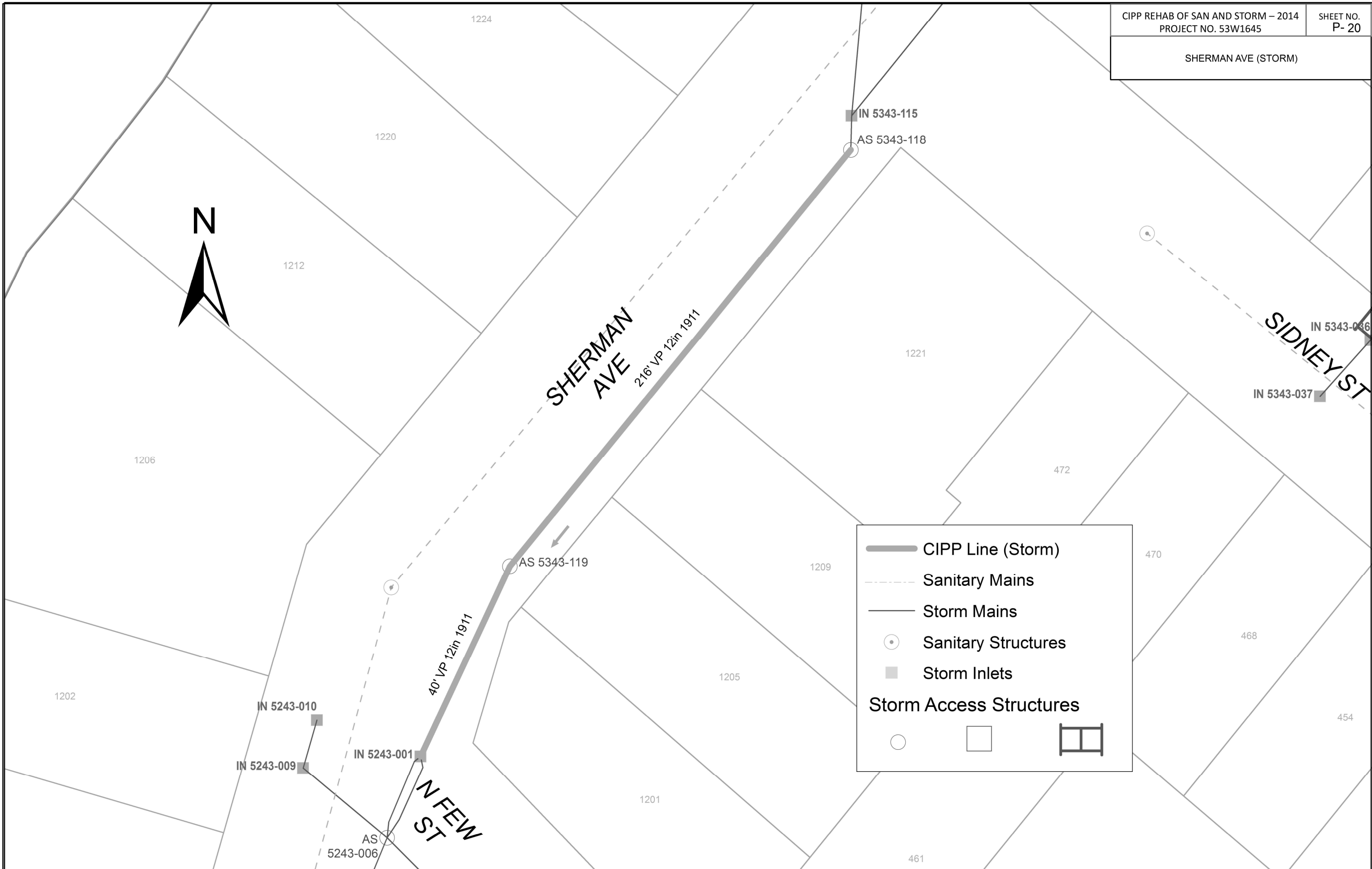
ORIGINATOR: CITY OF MADISON, SEWER OPERATIONS



	CIPP Line (Storm)
	Sanitary Mains
	Storm Mains
	Sanitary Structures
	Storm Inlets
	Laterals
Storm Access Structures	



ORIGINATOR: CITY OF MADISON, SEWER OPERATIONS



	CIPP Line (Storm)
	Sanitary Mains
	Storm Mains
	Sanitary Structures
	Storm Inlets
Storm Access Structures	

ORIGINATOR: CITY OF MADISON, SEWER OPERATIONS