

SHEETS

- L-1
- L-2
- L-3

CENTRAL PARK
 GOODMAN PARK
 OLIN PARK

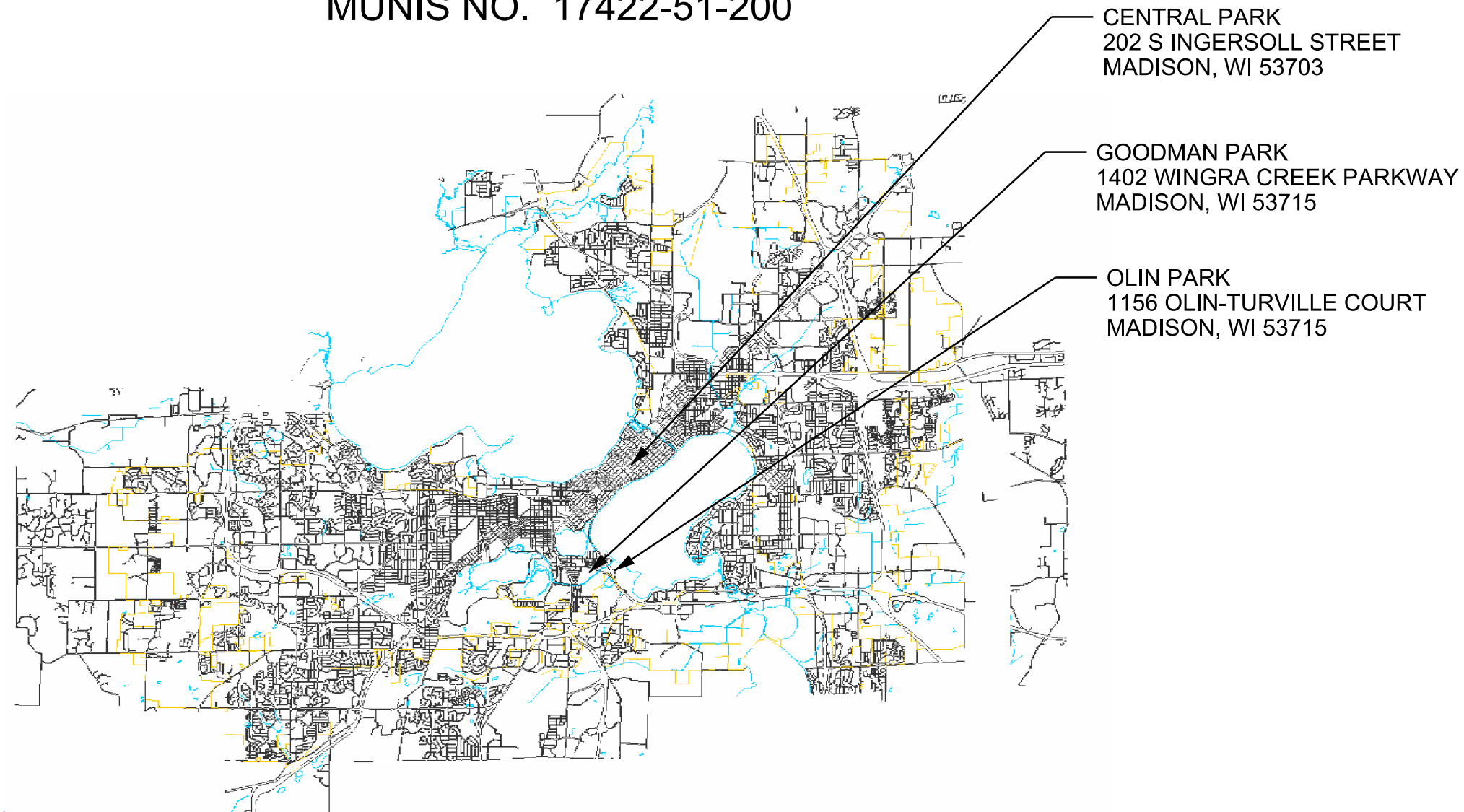
City of Madison
 Department of Public Works
PARKS DIVISION

City-County Building, Suite 104
 210 Martin Luther King, Jr. Blvd.
 PO Box 2987
 Madison, WI 53701-2987

play
**MADISON
 PARKS**

**2016 SPRING PARKS DIVISION RAIN
 GARDEN MANAGEMENT**
 CITY OF MADISON PARKS DIVISION
 DEPARTMENT OF PUBLIC WORKS

MUNIS NO. 17422-51-200



CENTRAL PARK
 202 S INGERSOLL STREET
 MADISON, WI 53703

GOODMAN PARK
 1402 WINGRA CREEK PARKWAY
 MADISON, WI 53715

OLIN PARK
 1156 OLIN-TURVILLE COURT
 MADISON, WI 53715

PROJECT:
*2016 SPRING PARKS
 DIVISION RAIN
 GARDEN
 MANAGEMENT*

Although every effort has been made in preparing these plans and checking them for accuracy, the contractor and subcontractors must check all details and dimensions of their trade and be responsible for the same.

ITEM	DATE
Drawn by: KK	02-12-2016
Approved by:	xx-xx-xxxx

PUBLIC WORKS PROJECT #:
7674

SHEET TITLE:
LANDSCAPE PLANS

SHEET NUMBER:
COVER SHEET

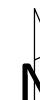
City of Madison
Department of Public Works
PARKS DIVISION

City-County Building, Suite 104
210 Martin Luther King, Jr. Blvd.
PO Box 2987
Madison, WI 53701-2987

play
**MADISON
PARKS**

Graphical Scale

0 30 ft



PROJECT:
*2016 SPRING
PARKS DIVISION
RAIN GARDEN
MANAGEMENT*

*CENTRAL PARK
202 S INGERSOLL ST
MADISON, WI 53703*

Although every effort has been made in preparing these plans and checking them for accuracy, the contractor and subcontractors must check all details and dimensions of their trade and be responsible for the same.

ITEM _____ DATE _____
Drawn by: KK 02-12-2016
Approved by: xx-xx-xxxx

PUBLIC WORKS PROJECT #:
7674

SHEET TITLE:
LANDSCAPE PLAN

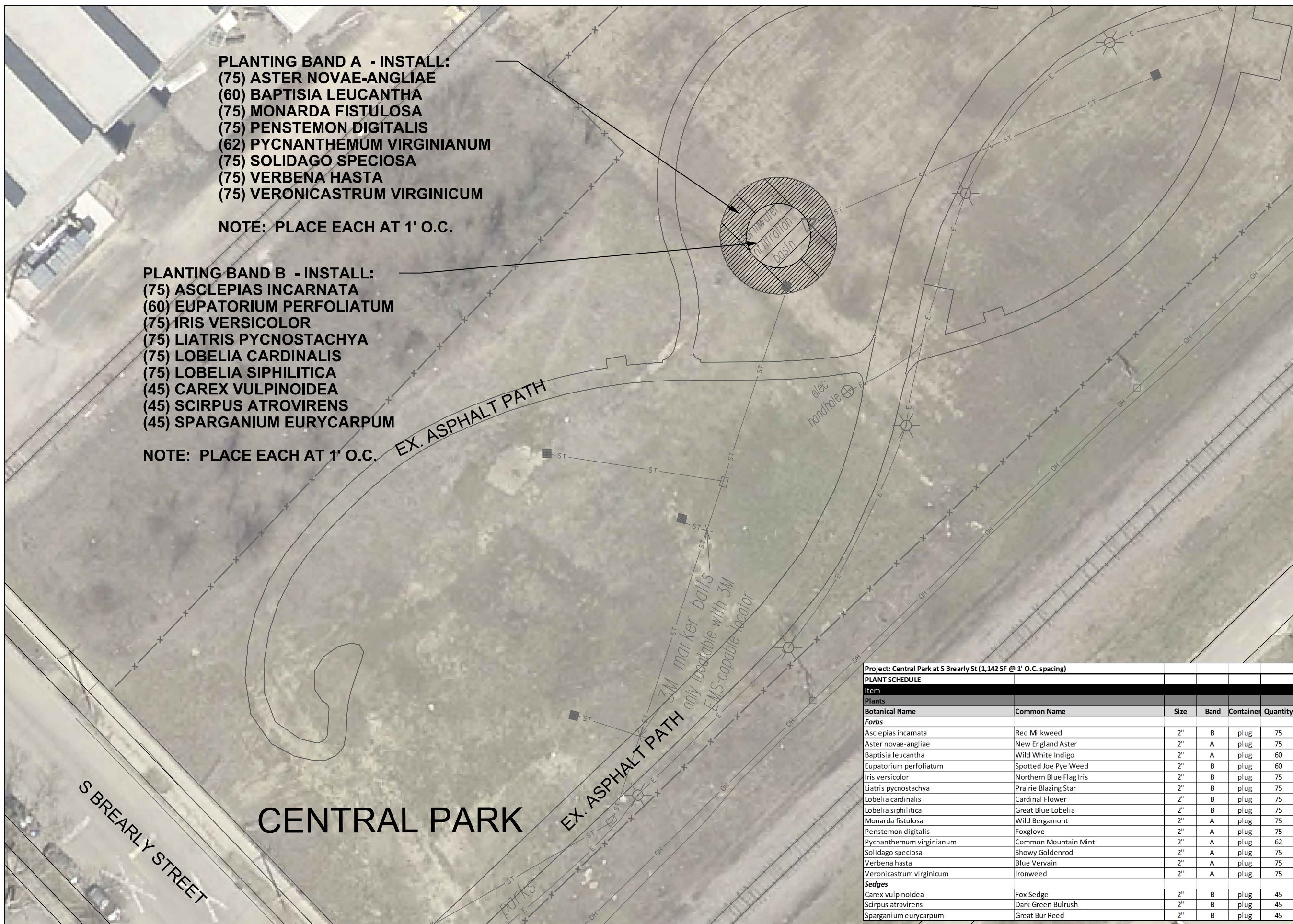
SHEET NUMBER:
L-1

PLANTING BAND A - INSTALL:
(75) ASTER NOVAE-ANGLIAE
(60) BAPTISIA LEUCANTHA
(75) MONARDA FISTULOSA
(75) PENSTEMON DIGITALIS
(62) PYCNANTHEMUM VIRGINIANUM
(75) SOLIDAGO SPECIOSA
(75) VERBENA HASTA
(75) VERONICASTRUM VIRGINICUM

NOTE: PLACE EACH AT 1' O.C.

PLANTING BAND B - INSTALL:
(75) ASCLEPIAS INCARNATA
(60) EUPATORIUM PERFOLIATUM
(75) IRIS VERSICOLOR
(75) LIATRIS PYCNOSTACHYA
(75) LOBELIA CARDINALIS
(75) LOBELIA SIPHILITICA
(45) CAREX VULPINOIDEA
(45) SCIRPUS ATROVIRENS
(45) SPARGANIUM EURYCARPUM

NOTE: PLACE EACH AT 1' O.C.



Project: Central Park at S Brearly St (1,142 SF @ 1' O.C. spacing)

PLANT SCHEDULE					
Item					
Plants					
Botanical Name	Common Name	Size	Band	Container	Quantity
Forbs					
Asclepias incarnata	Red Milkweed	2"	B	plug	75
Aster novae-angliae	New England Aster	2"	A	plug	75
Baptisia leucantha	Wild White Indigo	2"	A	plug	60
Eupatorium perfoliatum	Spotted Joe Pye Weed	2"	B	plug	60
Iris versicolor	Northern Blue Flag Iris	2"	B	plug	75
Liatris pycnostachya	Prairie Blazing Star	2"	B	plug	75
Lobelia cardinalis	Cardinal Flower	2"	B	plug	75
Lobelia siphilitica	Great Blue Lobelia	2"	B	plug	75
Monarda fistulosa	Wild Bergamont	2"	A	plug	75
Penstemon digitalis	Foxglove	2"	A	plug	75
Pycnanthemum virginianum	Common Mountain Mint	2"	A	plug	62
Solidago speciosa	Showy Goldenrod	2"	A	plug	75
Verbena hasta	Blue Vervain	2"	A	plug	75
Veronicastrum virginicum	Ironweed	2"	A	plug	75
Sedges					
Carex vulpinoidea	Fox Sedge	2"	B	plug	45
Scirpus atrovirens	Dark Green Bulrush	2"	B	plug	45
Sparganium eurycarpum	Great Bur Reed	2"	B	plug	45

Project: Goodman Park at W Olin Ave (11,415 SF @ 2' O.C. spacing)				
PLANT SCHEDULE				
Item				
Plants				
Botanical Name	Common Name	Size	Container	Quantity
Forbs				
Alisma subcordatum	American Water Plantain	2"	plug	659
Iris versicolor	Northern Blue Flag Iris	2"	plug	659
Sedges				
Carex vulpinoidea	Fox Sedge	2"	plug	659
Scirpus atrovirens	Dark Green Bulrush	2"	plug	659
Sparganium eurycarpum	Great Bur Reed	2"	plug	659



BRUSH EXISTING CATTAILS AND CORDGRASS PER BID ITEM #90000

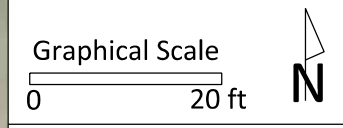
EX. PARKING LOT

GOODMAN PARK

INSTALL THE FOLLOWING IN CLONAL GROUPS (11,415 SF / 1268 SY):
 (659) ALISMA SUBCORDATUM
 (659) IRIS VERSICOLOR
 (659) CAREX VULPINOIDEA
 (659) SCIRPUS ATROVIRENS
 (659) SPARGANIUM EURYCARPUM

NOTE: PLACE EACH AT 2' O.C.

City of Madison
 Department of Public Works
PARKS DIVISION
 City-County Building, Suite 104
 210 Martin Luther King, Jr. Blvd.
 PO Box 2987
 Madison, WI 53701-2987
play MADISON PARKS



PROJECT:
2016 SPRING PARKS DIVISION RAIN GARDEN MANAGEMENT
GOODMAN PARK
 1402 WINGRA CREEK PKWY
 MADISON, WI 53715

Although every effort has been made in preparing these plans and checking them for accuracy, the contractor and subcontractors must check all details and dimensions of their trade and be responsible for the same.

ITEM	DATE
Drawn by: KK	02-12-2016
Approved by:	xx-xx-xxxx

PUBLIC WORKS PROJECT #:
7674

SHEET TITLE:
LANDSCAPE PLAN

SHEET NUMBER:
L-2

OLIN PARK

INSTALL THE FOLLOWING IN CLONAL GROUPS (6148 SF / 683 SY):
 (294) CAREX GRAYI
 (294) HYPERICUM ASCYRON
 (295) SCIRPUS ATROVIRENS
 (295) SPARGANIUM EURYCARPUM

NOTE: PLACE EACH AT 2' O.C.

BRUSH EXISTING CATTAILS, REED
 CANARY GRASS AND CORDGRASS
 PER BID ITEM #90001

CAUTION
 CAUTION EXISTING ELECTRIC LINE.
 CONTRACTOR WILL BE REQUIRED
 TO REPAIR DAMAGED UTILITIES

City of Madison
 Department of Public Works
 PARKS DIVISION

City-County Building, Suite 104
 210 Martin Luther King, Jr. Blvd.
 PO Box 2987
 Madison, WI 53701-2987

play
**MADISON
 PARKS**

Graphical Scale
 0 20 ft **N**

PROJECT:
 2016 SPRING
 PARKS DIVISION
 RAIN GARDEN
 MANAGEMENT

OLIN PARK
 1156 OLIN-TURVILLE CT
 MADISON, WI 53715

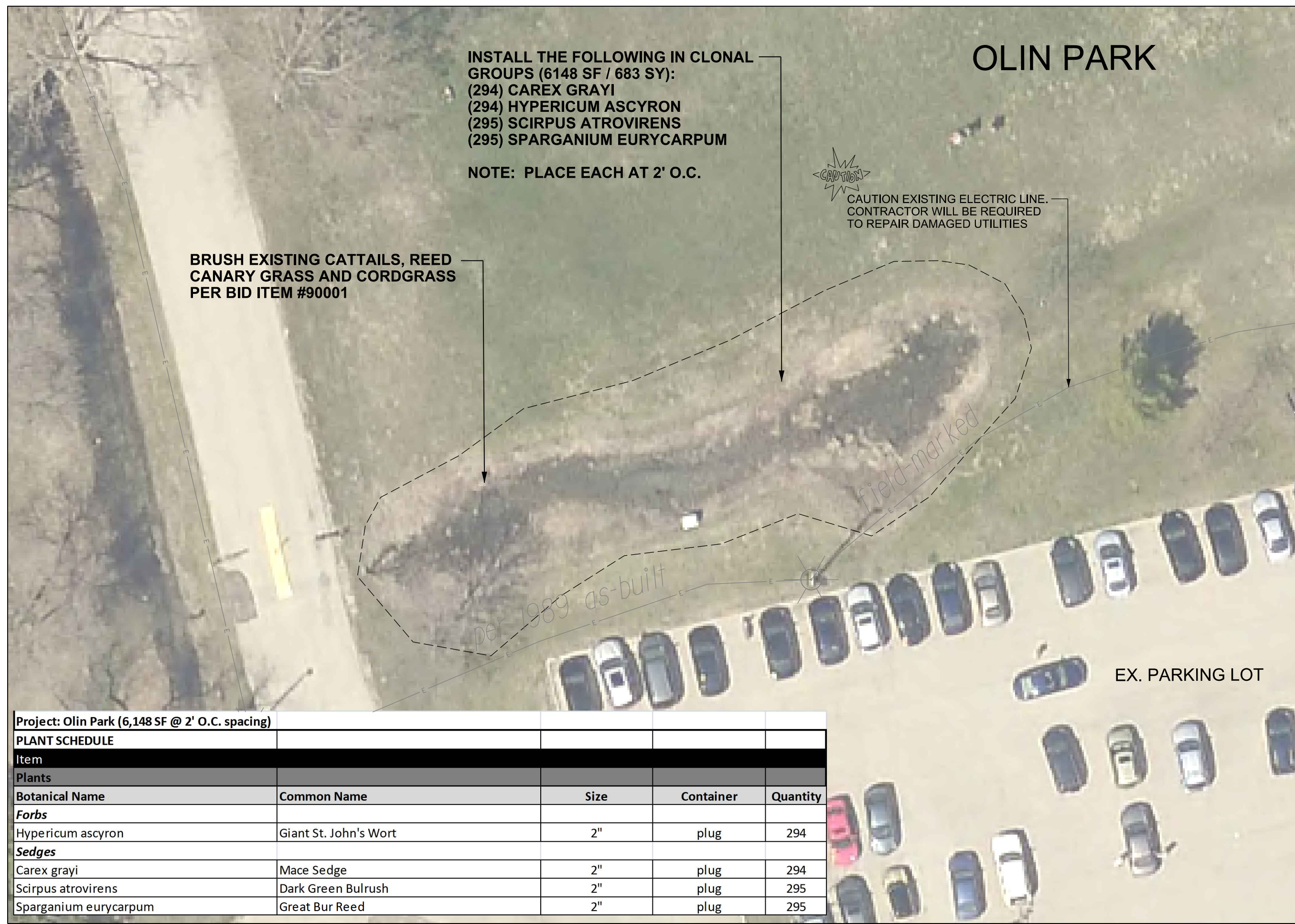
Although every effort has been made in preparing these plans and checking them for accuracy, the contractor and subcontractors must check all details and dimensions of their trade and be responsible for the same.

ITEM	DATE
Drawn by: KK	02-16-2016
Approved by:	xx-xx-xxxx

PUBLIC WORKS PROJECT #:
7674

SHEET TITLE:
LANDSCAPE PLAN

SHEET NUMBER:
L-3



Project: Olin Park (6,148 SF @ 2' O.C. spacing)				
PLANT SCHEDULE				
Item				
Plants				
Botanical Name	Common Name	Size	Container	Quantity
Forbs				
Hypericum ascyron	Giant St. John's Wort	2"	plug	294
Sedges				
Carex grayi	Mace Sedge	2"	plug	294
Scirpus atrovirens	Dark Green Bulrush	2"	plug	295
Sparganium eurycarpum	Great Bur Reed	2"	plug	295