

Madison, Wisconsin

INDEX OF SHEETS

SHEET NO.	TITLE
1	
D1	TYPICAL SECTIONS
EC1-EC3	EROSION CONTROL PLAN & PROFILES
P1-P3	STREET PLAN & PROFILES
U1-U3	SEWERS PLAN & PROFILES
U4	SANITARY SEWER SCHEDULE
U5-U6	STORM SEWER SCHEDULE
W1-W3	WATER PLAN & PROFILE
W4	WATER IMPACT PLAN
W5	WATER ESTIMATE OF MATERIALS
X1-X6	CROSS SECTIONS

CITY OF MADISON

CITY ENGINEERING DIVISION

DEPARTMENT OF PUBLIC WORKS

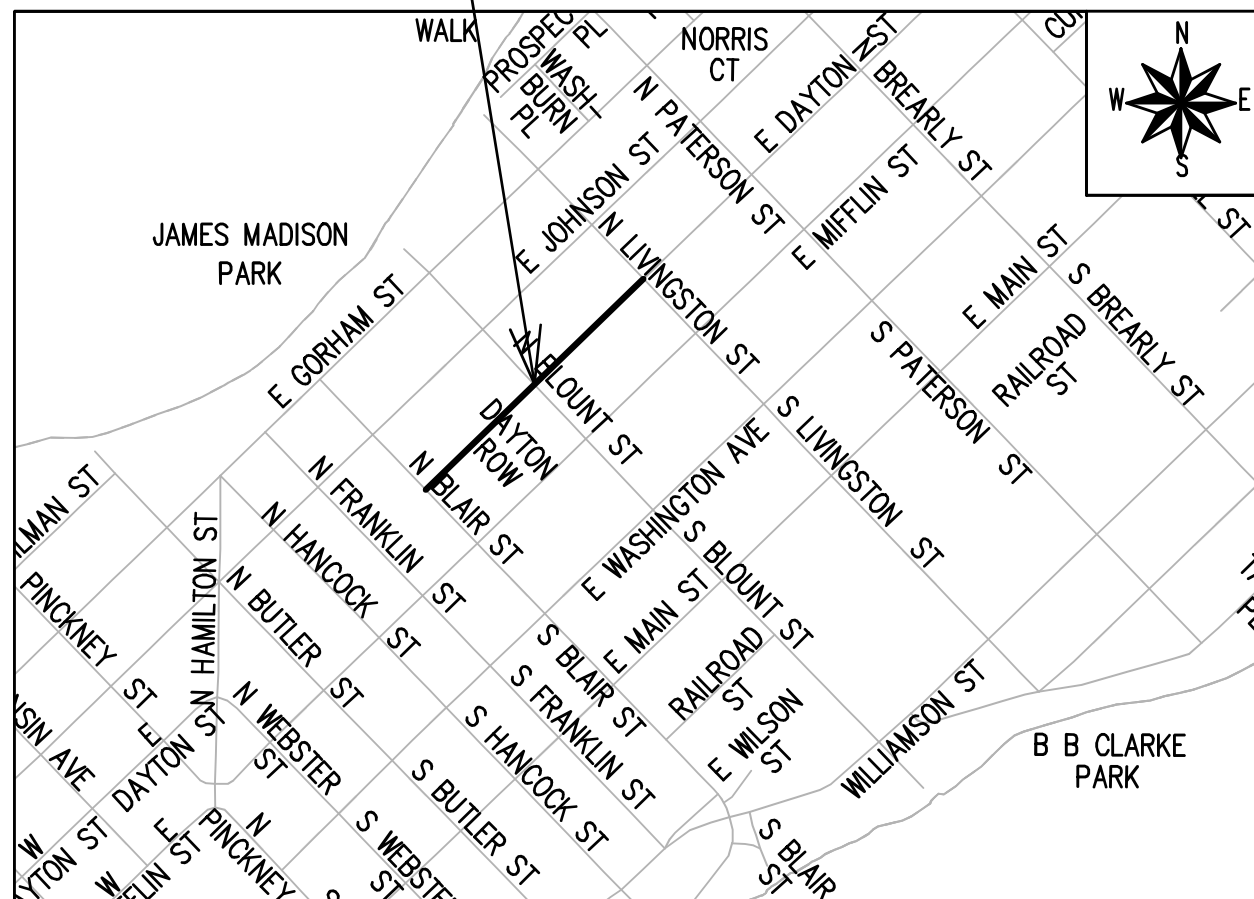
PLAN OF PROPOSED IMPROVEMENT

E DAYTON ST ASSESSMENT DISTRICT - 2020

PROJECT LOCATION

CITY PROJECT NO. 11739
CONTRACT NO. 8349

ADDENDUM 2 - 6/29/2020
REVISION 1 - 8/24/2020



EARTH WORK SUMMARY:

EXCAVATION CUT(MEASURED PLAN QUANTITY) = 3,750 C.Y.
ESTIMATED UNDISTRIBUTED UNDERCUT = 750 C.Y.
TOTAL UNCLASSIFIED EXCAVATION CUT = 4,500 C.Y.

CONVENTIONAL SIGNS	
FIELD VERIFY ALL UTILITY LOCATIONS	
GAS	— G —
STORM SEWER	— ST —
SANITARY SEWER	— SAN —
WATER	— W —
BURIED ELECTRIC	— E —
OVERHEAD ELECTRIC	— OH —
POWER POLE	
ADA COMPLIANT RAMP W/ DETECTABLE WARNING FIELD	
COMBUSTIBLE FLUIDS	

NOTES:
ALL GUTTERS SHALL DRAIN WITH A MINIMUM GRADE OF 0.50% TOWARD STORM SEWER INLETS.

SIDEWALK RAMPS AND CURB THRU SIDEWALK RAPMS SHALL HAVE A MAXIMUM SLOPE OF 1" PER 12", SIDEWALK AND CURB RAMPS SHALL BE CONSTRUCTED WITH A SIDE SLOPE OF 1.50%. SIDEWALK SHALL HAVE A MINIMUM LONGITUDINAL SLOPE OF 0.50% AND A MAXIMUM LONGITUDINAL SLOPE OF 5.00% EXCEPT WHERE STREET GRADES EXCEED 5.00%.

PUBLIC IMPROVEMENT PROJECT APPROVED

APPROVED DATE: JUNE 16, 2020

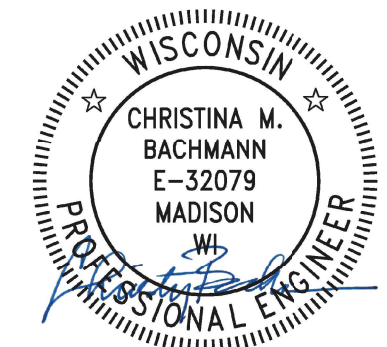
BY THE COMMON COUNCIL OF MADISON, WISCONSIN

PUBLIC IMPROVEMENT DESIGN APPROVED BY:

Greg Fries Jun 17, 2020

City Engineer Date

STREET DESIGNED BY:



Jun 17, 2020

SANITARY SEWER DESIGNED BY:



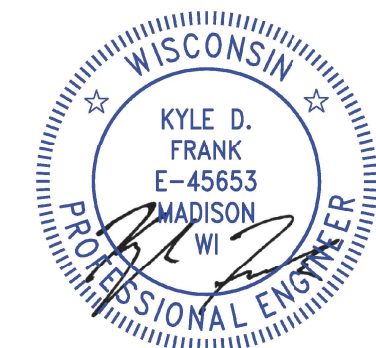
Jun 18, 2020

WATER MAIN DESIGNED BY:



Jun 17, 2020

STORM SEWER DESIGNED BY:



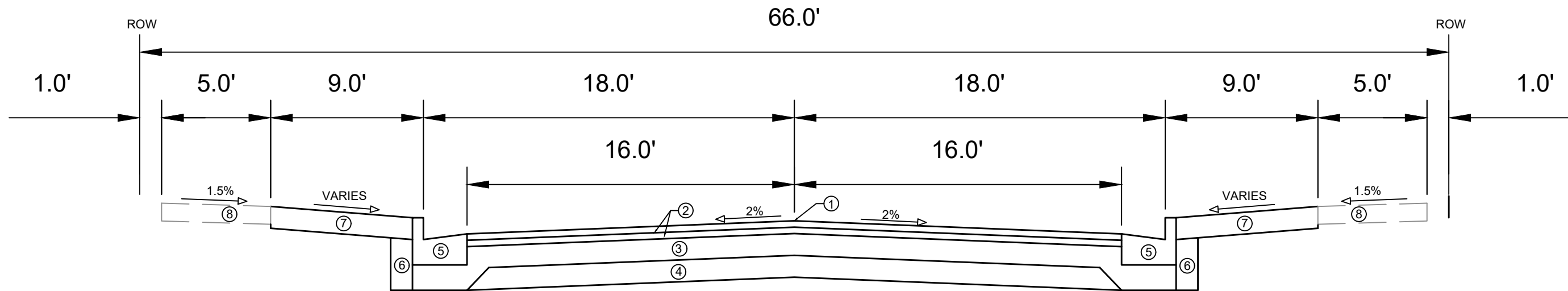
Jun 18, 2020

PLOT SCALE: 1 IN=1 FT_XREF

PLOT NAME: ---

REV. DATE: 6/11/2020 1:59 PM

ORIGINATOR: CITY_OF_MADISON



TYPICAL SECTION
E DAYTON ST

- ① POINT REFERRED TO ON PROFILE
- ② 1.75" HMA PAVEMENT- TYPE 4 LT 58-28 S
- ③ 6" GRADATION 2 CRUSHED AGGREGATE BASE COURSE
- ④ 6" GRADATION 1 CRUSHED AGGREGATE BASE COURSE
- ⑤ CONCRETE CURB AND GUTTER TYPE 'A' OR TYPE 'X', SEE P-SHEETS FOR LOCATIONS
- ⑥ FILL INCIDENTAL TO CURB AND GUTTER INSTALLATION
- ⑦ RESTORE DISTURBED AREAS WITH 6" TOPSOIL, SEED AND MATTING
- ⑧ 5" CONCRETE SIDEWALK, REMOVE AND REPLACE AS SHOWN ON THE PLAN OR AS DIRECTED BY THE ENGINEER

MARK	REVISION	DATE	BY
11739	11739	6/15/2020 5:10 PM	11739
Described By: ###			Scale: #####
			D-1

11739
MADISON, WI
CONTRACT NO: 8349

CONSTRUCTION DETAILS
TYPICAL SECTIONS

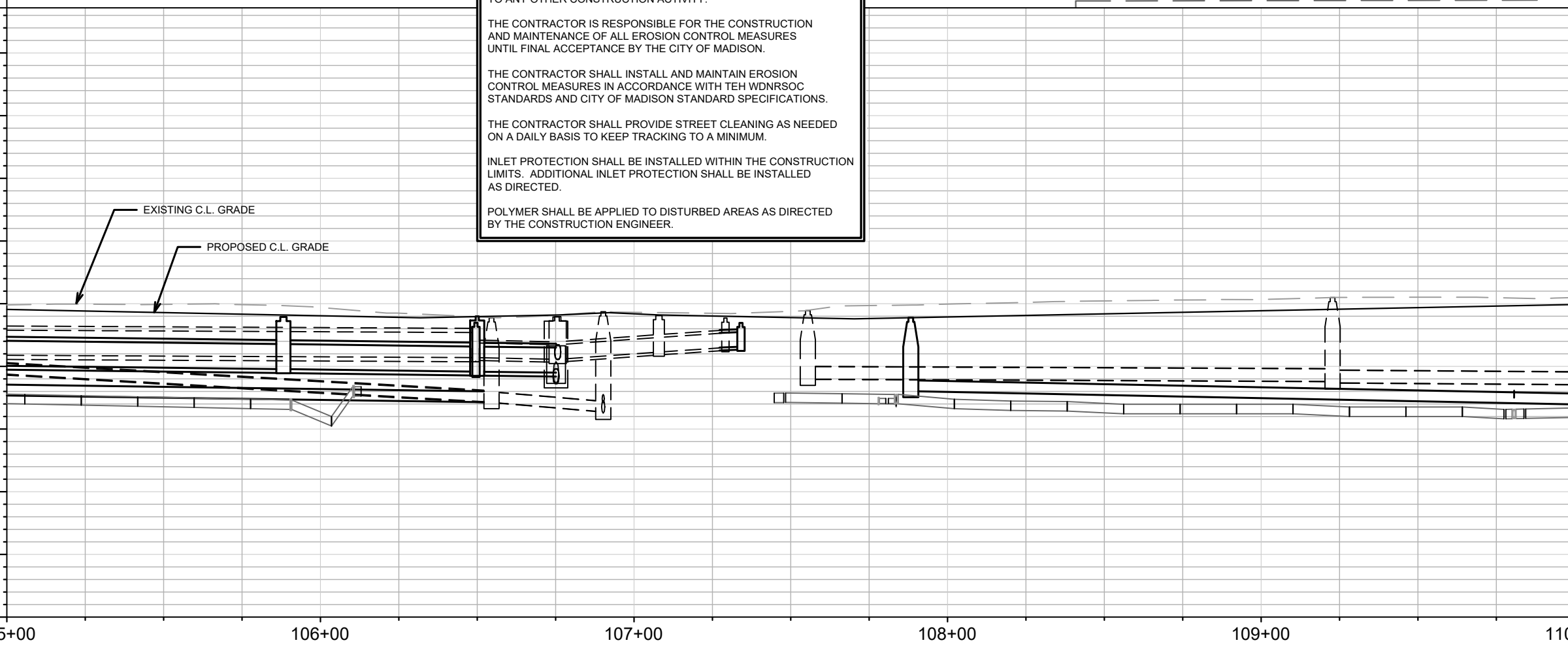
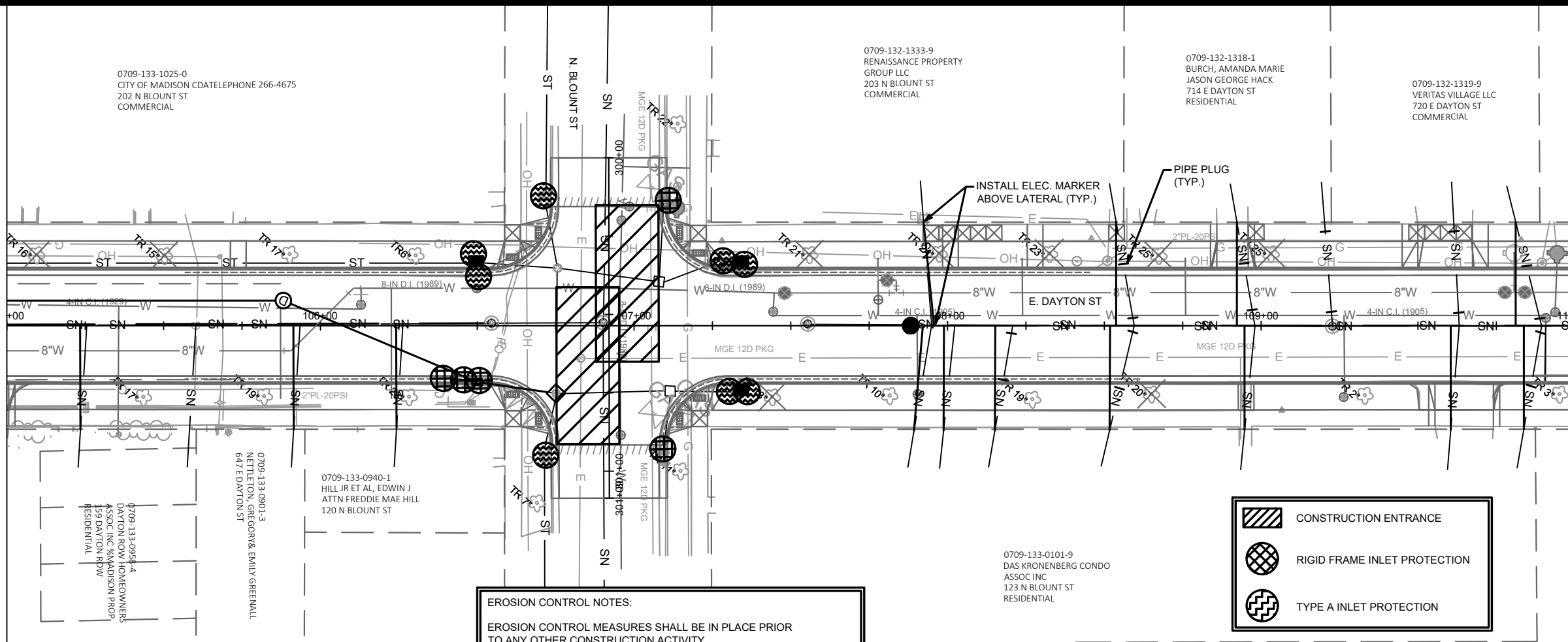


11739
D-1

M:\DESIGN\Projects\11739\CAD\Plan Sheets\11739EN_Details.dwg

MATCH LINE 105+00.00

MATCH LINE 110+00.00



EROSION CONTROL NOTES:

EROSION CONTROL MEASURES SHALL BE IN PLACE PRIOR TO ANY OTHER CONSTRUCTION ACTIVITY.

THE CONTRACTOR IS RESPONSIBLE FOR THE CONSTRUCTION AND MAINTENANCE OF ALL EROSION CONTROL MEASURES UNTIL FINAL ACCEPTANCE BY THE CITY OF MADISON.

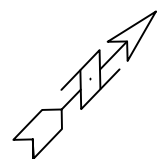
THE CONTRACTOR SHALL INSTALL AND MAINTAIN EROSION CONTROL MEASURES IN ACCORDANCE WITH TEH WDNRSOC STANDARDS AND CITY OF MADISON STANDARD SPECIFICATIONS.

THE CONTRACTOR SHALL PROVIDE STREET CLEANING AS NEEDED ON A DAILY BASIS TO KEEP TRACKING TO A MINIMUM.

INLET PROTECTION SHALL BE INSTALLED WITHIN THE CONSTRUCTION LIMITS. ADDITIONAL INLET PROTECTION SHALL BE INSTALLED AS DIRECTED.

POLYMER SHALL BE APPLIED TO DISTURBED AREAS AS DIRECTED BY THE CONSTRUCTION ENGINEER.

	CONSTRUCTION ENTRANCE
	RIGID FRAME INLET PROTECTION
	TYPE A INLET PROTECTION



0709-133-1025-0
CITY OF MADISON CD TELEPHONE 266-4675
202 N BLOUNT ST
COMMERCIAL

0709-132-1333-9
RENAISSANCE PROPERTY
GROUP LLC
203 N BLOUNT ST
COMMERCIAL

0709-132-1318-1
BURCH, AMANDA MARIE
JASON GEORGE HACK
714 E DAYTON ST
RESIDENTIAL

0709-132-1319-9
VERITAS VILLAGE LLC
720 E DAYTON ST
COMMERCIAL

0709-133-0958-4
DAYTON ROW HOMEOWNERS
ASSOC. INC. 34 MADISON PROP
159 DAYTON RDV
RESIDENTIAL

0709-133-0901-3
NETTLETON, GREGORY & EMILY GREENMALL
647 E DAYTON ST

0709-133-0940-1
HILL JR ET AL, EDWIN J
ATTN FREDDIE MAE HILL
120 N BLOUNT ST

0709-133-0101-9
DAS KRONENBERG CONDO
ASSOC INC
123 N BLOUNT ST
RESIDENTIAL

MARK	REVISION	DATE	BY

11739
MADISON, WI
8349
CONTRACT NO:

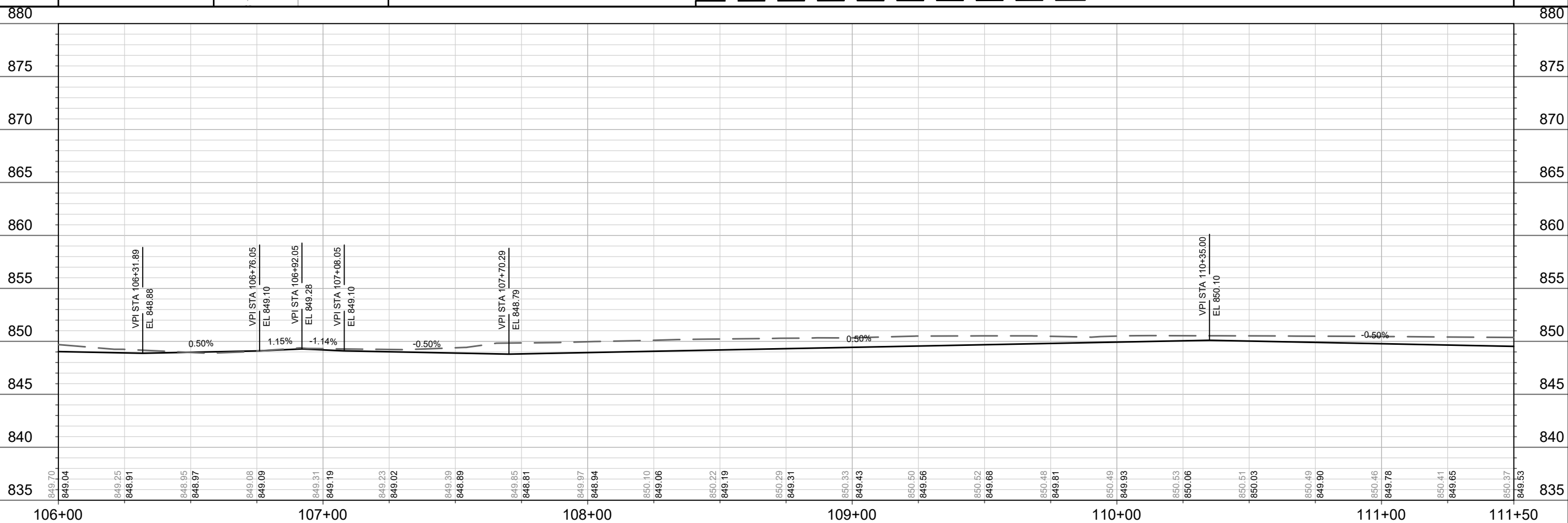
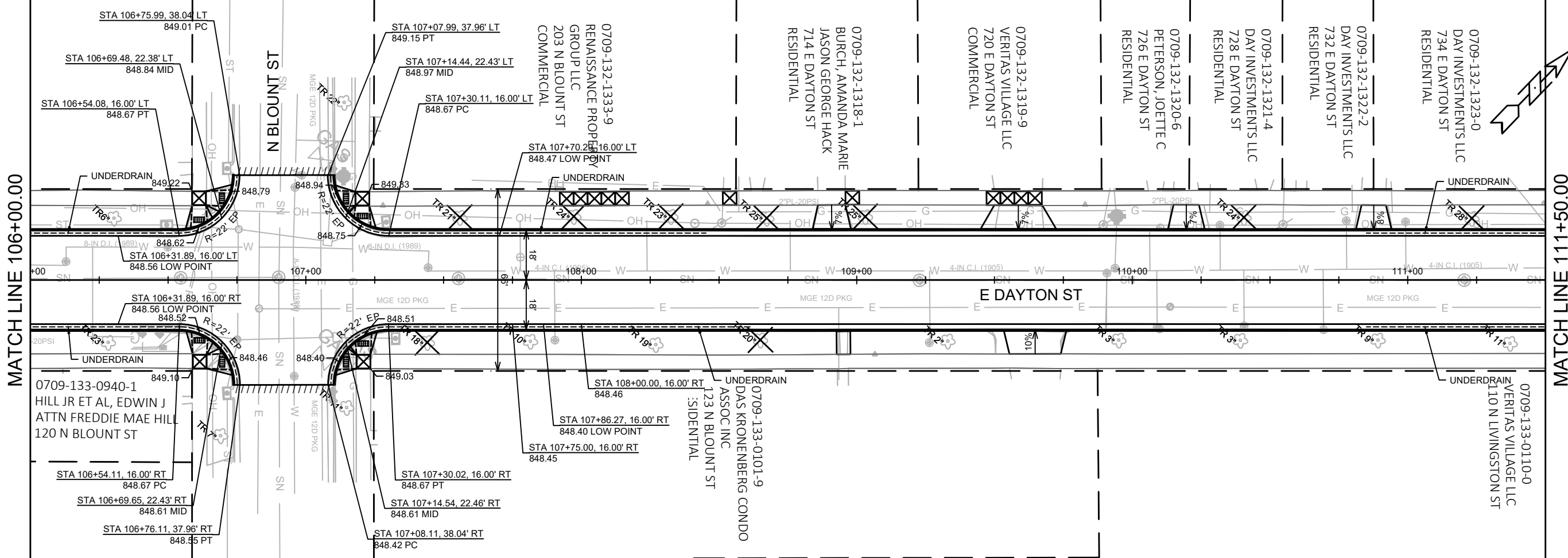
EROSION CONTROL PLAN
E DAYTON ST ASSESSMENT DISTRICT - 2020
M:\DESIGN\Projects\11739\CAD\Sanitary\11739EC-Plans.dwg



11739
EC-2

MATCH LINE 106+00.00

MATCH LINE 111+50.00



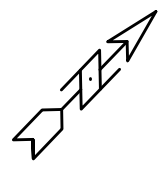
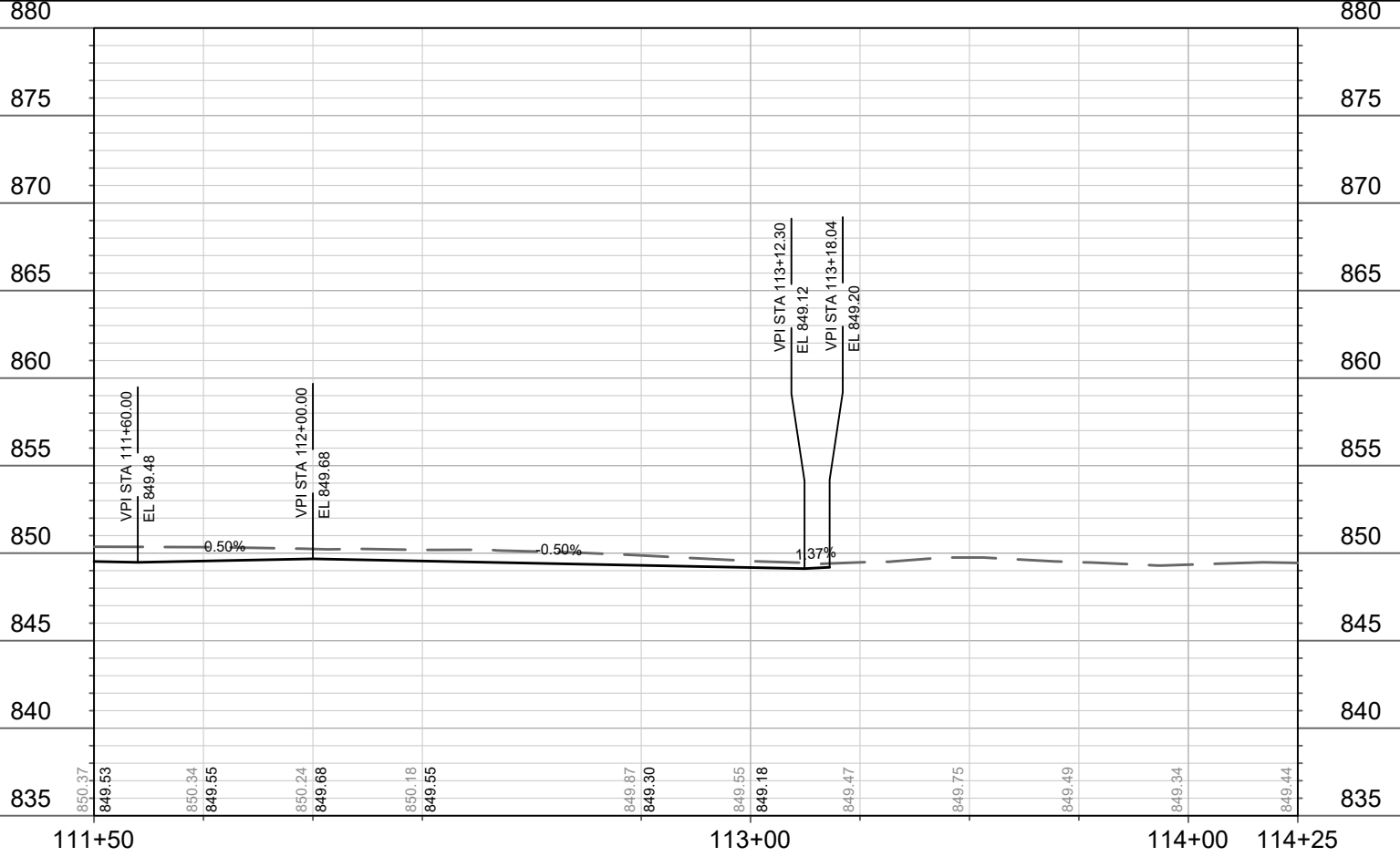
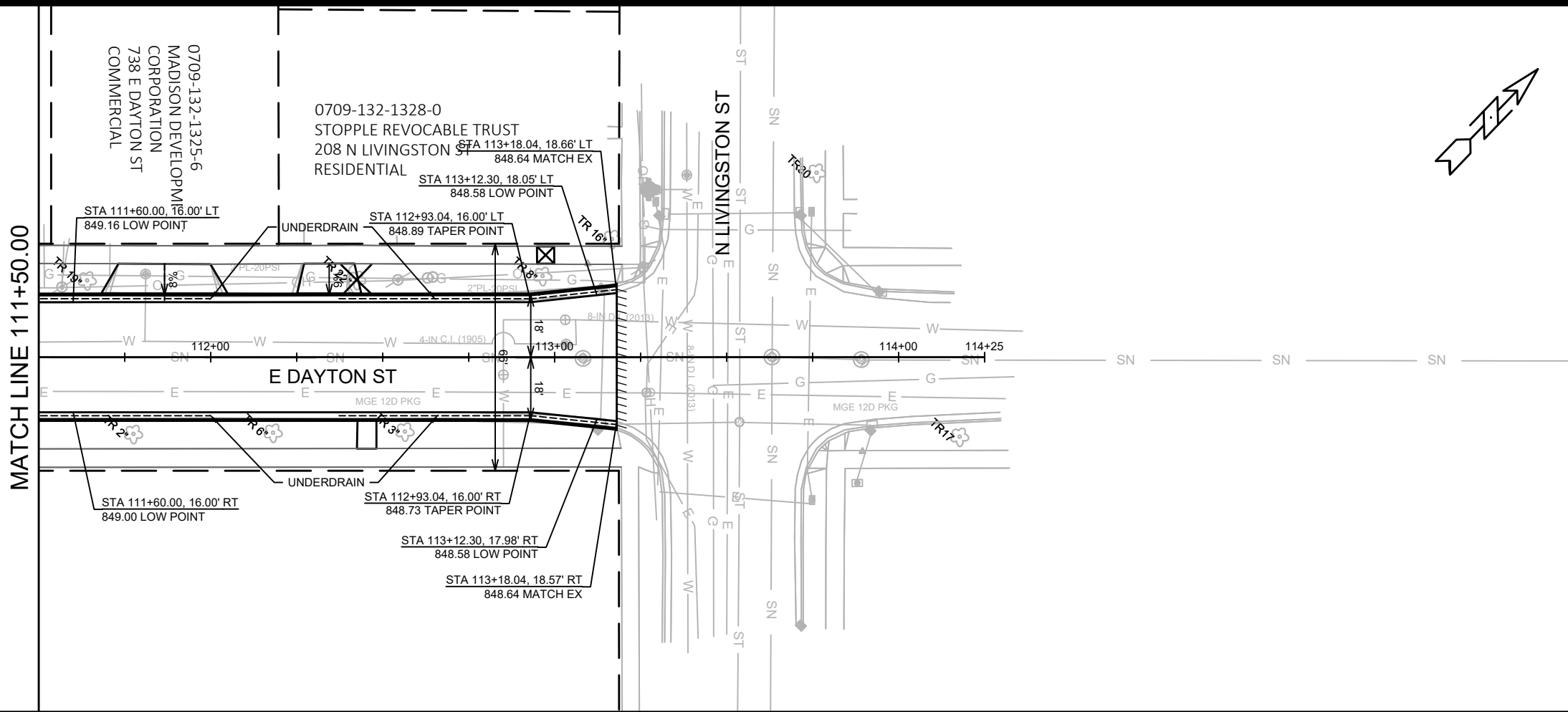
MARK	REVISION	DATE	BY

Designed By: 11739
Scale: 1" = 40'

11739
MADISON, WI
CONTRACT NO: 8349

STREET PLAN & PROFILE
E DAYTON ST ASSESSMENT DISTRICT - 2020
M:\DESIGN\Projects\11739\CAD\Streets\11739EN-Corridor.dwg





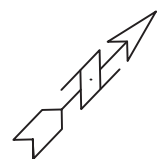
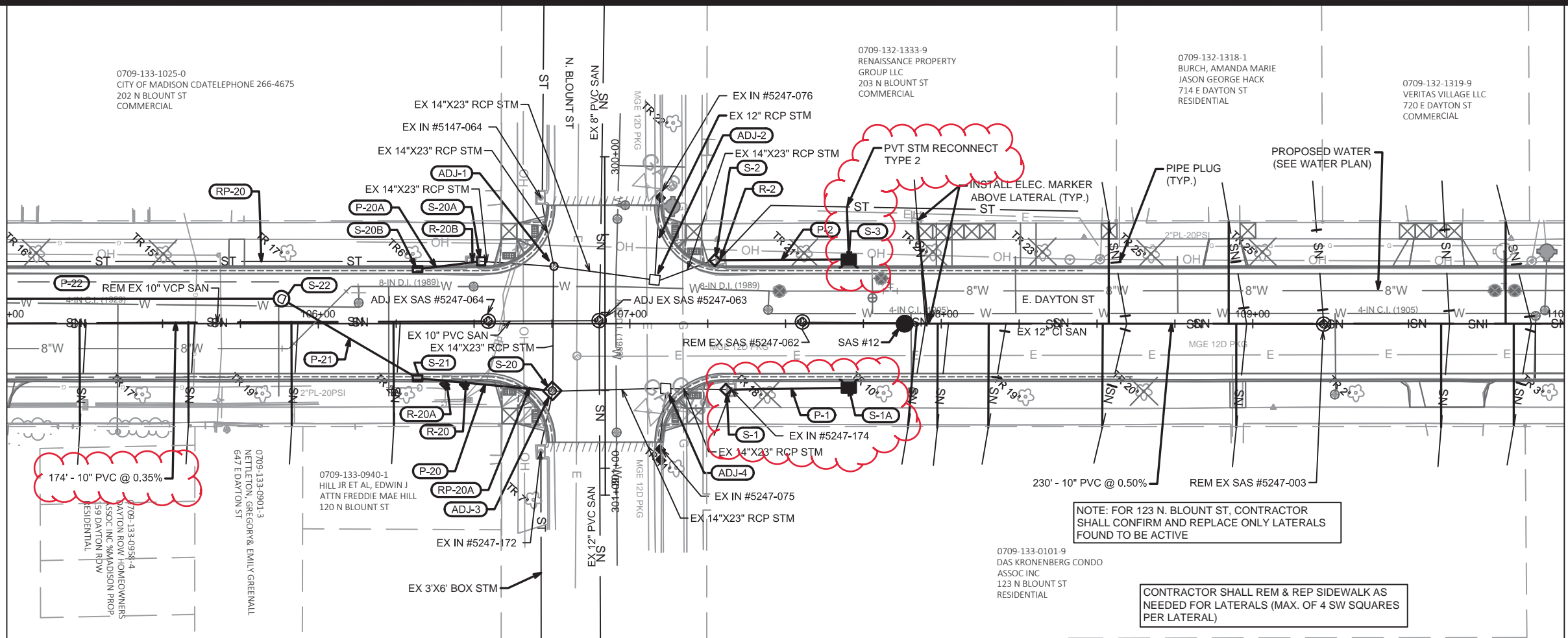
DATE	BY
REVISION	
Designed By: ##	11739
Date: 6/17/2020 2:01 PM	
Scale: 1" = 40'	
P-3	

11739
MADISON, WI
CONTRACT NO: 8349
STREET PLAN & PROFILE
E DAYTON ST ASSESSMENT DISTRICT - 2020
M:\DESIGN\Projects\11739\CAD\Streets\11739EN-Corridor.dwg

11739
P-3

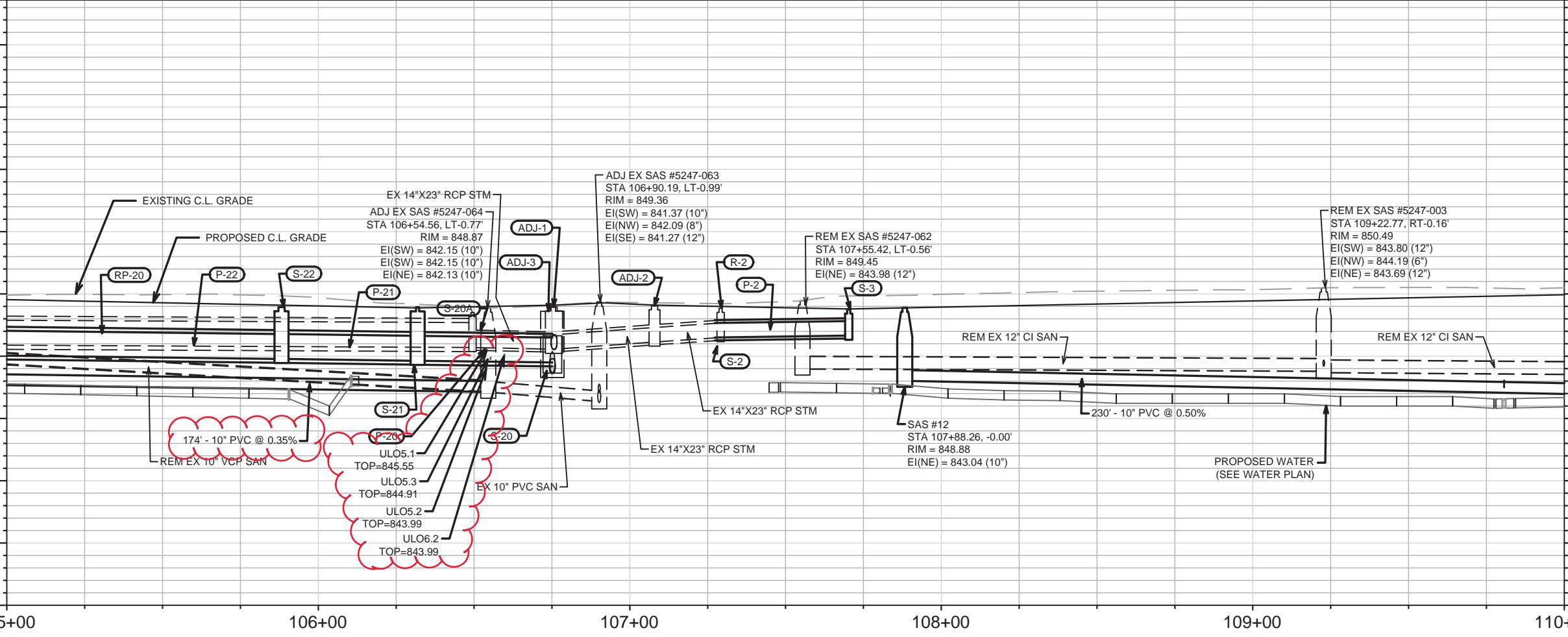
MATCH LINE 105+00.00

MATCH LINE 110+00.00



870
865
860
855
850
845
840
835
830
825

870
865
860
855
850
845
840
835
830
825



105+00

106+00

107+00

108+00

109+00

110+00

MARK	U-2	DATE	8/18/2020	BY	KDF
REVISION		DATE		BY	
U-2		DATE		BY	

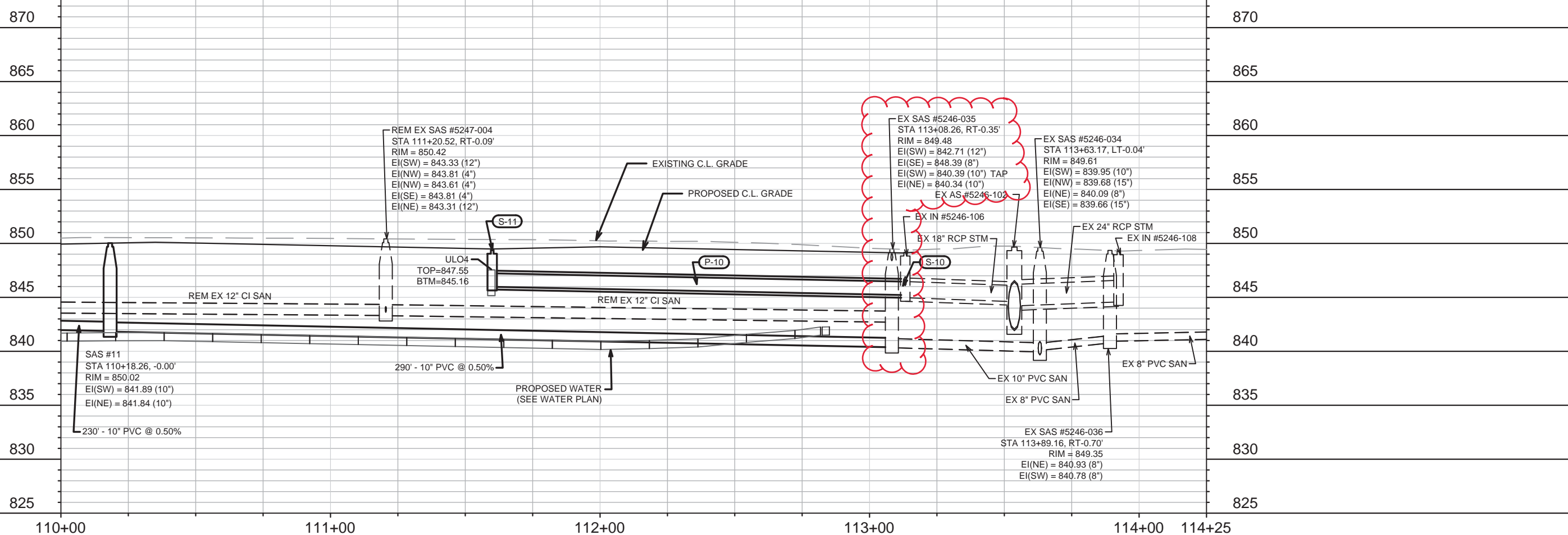
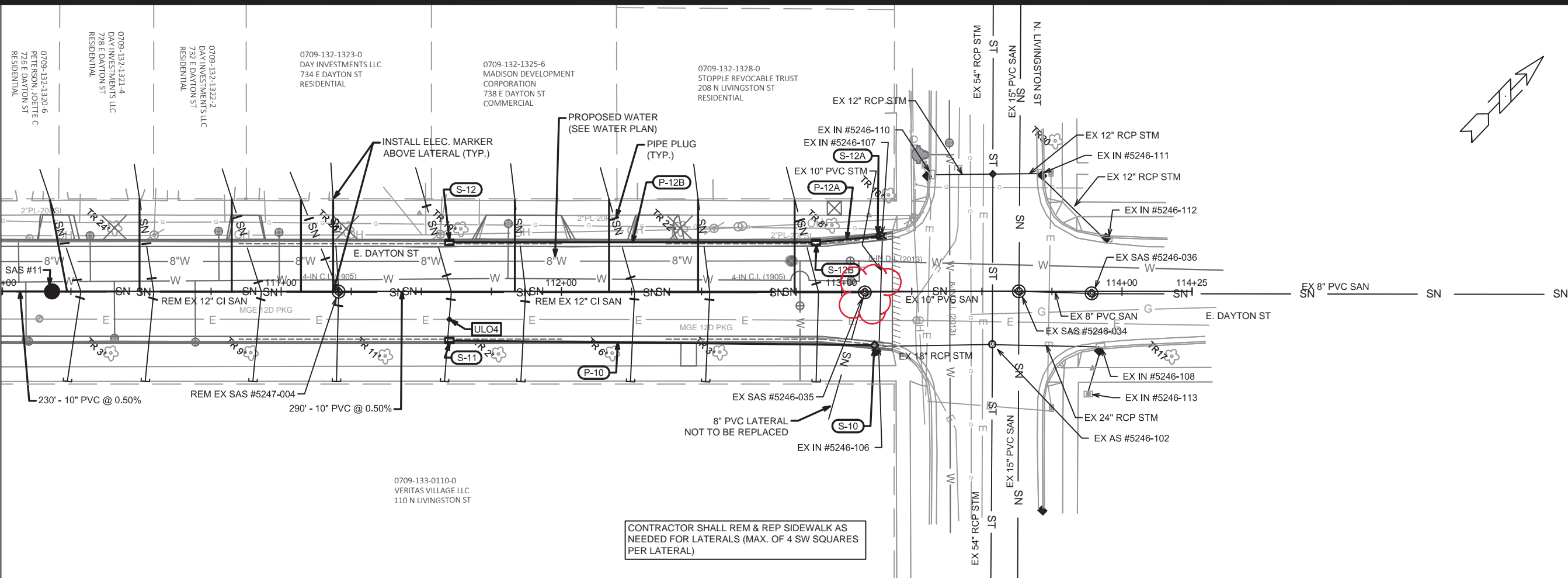
11739
MADISON, WI
8349
CONTRACT NO.

UTILITY PLAN & PROFILE
E DAYTON ST ASSESSMENT DISTRICT - 2020
M:\DESIGN\Projects\11739\CAD\Sanitary\11739SWR-Pipe Network.dwg



11739
U-2

MATCH LINE 110+00.00



MARK	U-3	DATE	8/18/2020	BY	KDF
REVISION		DATE	8/20/2020	BY	KDF
U-3		DATE	8/20/2020	BY	KDF

11739
 MADISON, WI
 CONTRACT NO.: 8349

UTILITY PLAN & PROFILE
 E DAYTON ST ASSESSMENT DISTRICT - 2020
 M:\DESIGN\Projects\11739\CAD\Sanitary\11739SWR-Pipe Network.dwg



11739
 U-3

SANITARY SEWER SCHEDULE

*REV 8/14/2020 KDF

E. DAYTON STREET ASSESS. DIST. - 2020	SHEET NO.
PROJECT NO. 11739	U-4
SANITARY SEWER SCHEDULE	
CITY OF MADISON	

PROPOSED SANITARY STRUCTURES

SAS NO.	STATION	LOCATION (OFFSET)	TOP OF CASTING	E.I.	DEPTH	NOTES
E. DAYTON STREET						
* SAS #1	104+80.64	CL	849.64	842.76	6.88	[1], [2]
* SAS #2	100+92.91	CL	850.00	844.17	5.83	[1], [2]
SAS #10	113+08.26	RT-0.35	849.13	840.34	8.79	[1], [2]
SAS #11	110+18.26	CL	850.02	841.84	8.18	[1], [2]
SAS #12	107+88.26	CL	848.88	843.04	5.84	[1], [2]

PROPOSED SANITARY PIPES

FROM (DNSTM)	TO (UPSTM)	DWNSTRM E.I.	UPSTRM E.I.	PLAN (PAY) LGTH (FT)	SLOPE (%)	PIPE SIZE	PVC TYPE	NOTES
E. DAYTON STREET								
* EX SAS #5247-064	SAS #1	842.15	842.76	174	0.35%	10"	SDR-35	-
* SAS #1	SAS #2	842.81	844.17	388	0.35%	10"	SDR-35	-
* EX SAS #5247-0035	SAS #11	840.39	841.84	290	0.50%	10"	SDR-35	-
SAS #11	SAS #12	841.89	843.04	230	0.50%	10"	SDR-35	-

SANITARY STRUCTURES ADJUSTMENTS

STRUCTURE ID NO.	STATION	LOCATION (OFFSET)	EX. TOC ELEV.	PROP ELEV.	ADJUST DIFF.	NOTES
E. DAYTON STREET						
SAS #5247-064	106+54.56	LT-0.77	848.87	848.98	0.11	-
SAS #5247-063	106+90.19	LT-0.99	849.36	849.08	-0.28	-

SANITARY STRUCTURE REMOVALS & ABANDONMENTS

STRUCTURE ID NO.	STATION	LOCATION (OFFSET)	TOP OF CASTING	E.I.	DEPTH	NOTES
E. DAYTON STREET						
SAS #5147-052	100+66.99	RT-25.44	849.93	845.51	4.42	ABANDON
SAS #5147-053	100+70.91	LT-0.86	850.12	845.46	4.66	REMOVE
SAS #5147-025	102+29.77	RT-24.96	850.11	845.17	4.94	REMOVE
SAS #5147-027	104+08.81	LT-0.85	850.25	844.71	5.54	REMOVE
SAS #5147-026	104+11.27	RT-23.83	849.94	844.44	5.50	REMOVE
SAS #5147-017	104+80.57	LT-0.27	849.93	844.66	5.27	REMOVE
SAS #5247-062	107+55.42	LT-0.56	849.45	843.98	5.47	REMOVE
SAS #5247-003	109+22.77	RT-0.16	850.49	843.69	6.80	REMOVE
SAS #5247-004	111+20.52	RT-0.09	850.42	843.31	7.11	REMOVE
SAS #5246-035	113+08.26	RT-0.35	849.48	840.34	9.14	REMOVE

SANITARY PIPES REMOVALS & ABANDONMENTS

REMOVE FROM	REMOVE TO	LGTH (FT)	PIPE SIZE	PIPE TYPE	PAID (Y/N)	NOTES
E. GORHAM STREET						
SAS #5147-025	SAS #5147-052	163	8"	VCP	N	ABAN W/ PLUGS
SAS #5147-026	SAS #5147-025	182	8"	VCP	N	ABAN W/ PLUGS
SAS #3	SAS #5147-053	16	10"	VCP	Y	-
SAS #5147-027	SAS #3	322	10"	VCP	N	-
SAS #5147-017	SAS #5147-027	72	10"	VCP	N	-
SAS #5247-064	SAS #5147-017	174	10"	VCP	N	-
SAS #12	SAS #5247-062	28	12"	CI	Y	-
SAS #5247-003	SAS #12	140	12"	CI	N	-
SAS #5247-004	SAS #5247-003	198	12"	CI	N	-
SAS #5246-035	SAS #5247-004	188	12"	CI	N	-

SPECIFIC NOTES

- [1] INSTALL INTERNAL CHIMNEY SEAL PER S.D.D. 5.7.17
- [2] INSTALL EXTERNAL SEWER ACCESS STRUCTURE JOINT SEAL

STORM SEWER SCHEDULE

*REV 8/14/2020 KDF

E. DAYTON STREET ASSESS. DIST. - 2020	SHEET NO.
PROJECT NO. 11739	U-5
STORM SEWER SCHEDULE	
CITY OF MADISON	

PROPOSED STORM STRUCTURES

STRUC. NO.	STATION	LOCATION (OFFSET)	TYPE	TOP OF CASTING	E.I.	DEPTH	NOTES
E. DAYTON STREET							
* S-1	107+30.83	RT-21.15	TAP	-	846.62	-	-
S-1A	107+70.29	RT-20.59	TERRACE TYPE 3	848.75	846.71	2.04	[1], FP, LP, UD
S-2	107+27.28	LT-20.36	BEND	-	846.50	-	-
S-3	107+70.29	LT-20.59	TERRACE TYPE 3	848.75	846.65	2.10	[1], FP, LP, UD
S-10	113+11.74	RT-19.16	TAP	-	845.22	-	-
S-11	112+62.00	RT-17.50	H INLET	849.54	845.98	3.56	FP, LP, UD, W/R-3067-7004-VB
* S-12	112+62.00	LT-17.50	H INLET	849.54	847.21	2.33	FP, LP, UD, W/R-3067-7004-VB
* S-12A	113+12.91	LT-19.62	TAP	-	846.45	-	-
* S-12B	112+90.80	LT-17.50	H INLET	849.28	846.56	2.72	FP, UD, W/R-3067-7004-V
S-20A	106+52.26	LT-20.00	BEND	-	845.70	-	-
S-20B	106+31.89	LT-17.50	3X3 SAS	848.93	845.70	3.23	FP, LP, UD, W/R-3067-7004-VB
S-20	106+75.14	RT-21.59	TAP	-	844.50	-	-
S-21	106+50.00	RT-18.00	4X4 SAS	848.93	844.63	4.30	LP, UD, W/R-3067-7004-VB
S-22	105+88.20	LT-8.00	4X4 SAS	848.94	844.78	4.16	W/R-1550-0054
S-23	104+92.27	LT-8.00	4X4 SAS	849.42	845.07	4.35	W/R-1550-0054
S-23A	104+92.27	LT-17.50	H INLET	849.64	846.12	3.52	W/R-3067-7004-V
S-24	103+61.50	LT-8.00	4X4 SAS	849.32	845.46	3.86	FP, W/R-1550-0054
S-24A	103+61.50	RT-17.50	H INLET	849.54	846.59	2.95	FP, LP, UD, W/R-3067-7004-V
S-24B	103+61.50	LT-17.50	H INLET	849.54	846.51	3.03	FP, LP, UD, W/R-3067-7004-VB
* S-25	102+98.89	LT-8.00	4X4 SAS	849.63	845.65	3.98	W/R-1550-0054
* S-25A	102+98.89	RT-17.50	H INLET	849.85	846.78	3.07	FP, W/R-3067-7004-V
* S-25B	102+98.89	LT-17.50	H INLET	849.85	846.70	3.15	FP, W/R-3067-7004-V
* S-25C	102+50.11	LT-17.50	H INLET	850.09	846.94	3.15	W/R-3067-7004-V
S-26	101+04.00	LT-8.00	4X4 SAS	849.90	846.24	3.66	FP, W/R-1550-0054
* S-26A	100+66.77	LT-17.50	SADDLE INLET	849.91	846.36	3.55	W/R-3067-7004-V
* S-27	100+53.33	LT-23.23	4X4 SAS	850.13	846.40	3.73	FP, W/R-1550-0054

PROPOSED STORM PIPES

PIPE NO.	FROM (DNSTM)	TO (UPSTM)	DISCH. E.I.	INLET E.I.	PLAN (PAY) LGTH (FT)	PIPE LGTH (FT)	SLOPE (%)	PIPE SIZE	TYPE	NOTES
E. DAYTON STREET										
* P-1	S-1	S-1A	846.62	846.71	37	35.9	0.25%	14" x 23"	HERCP	-
P-2	S-2	S-3	846.50	846.65	43	42.1	0.35%	14" x 23"	HERCP	-
P-10	S-10	S-11	845.22	845.98	152	150.3	0.51%	15"	RCP	-
P-11	S-11	S-12	846.23	846.40	35	33.0	0.51%	12"	RCP	-
* P-12A	S-12A	S-12B	846.45	846.56	22.5	20.7	0.53%	12"	RCP	-
* P-12B	S-12B	S-12	846.56	847.21	131	127.8	0.51%	12"	RCP	-
P-20A	S-20A	S-20B	845.70	845.80	20.5	19.0	0.50%	14" x 23"	HERCP	-
P-20	S-20	S-21	844.50	844.63	43.5	41.4	0.31%	24" x 38"	HERCP	-
P-21	S-21	S-22	844.63	844.78	50.5	46.2	0.32%	24" x 38"	HERCP	-
P-22	S-22	S-23	844.78	845.07	96	91.7	0.32%	24" x 38"	HERCP	-
P-23	S-23	S-24	845.07	845.46	131	125.9	0.31%	24" x 38"	HERCP	-
P-23A	S-23	S-23A	846.07	846.12	9.5	6.5	0.77%	12"	RCP	-
* P-24	S-24	S-25	845.46	845.65	62.5	57.8	0.33%	24" x 38"	HERCP	-
P-24A	S-24	S-24A	846.46	846.59	25.5	21.6	0.60%	12"	RCP	-
P-24B	S-24	S-24B	846.46	846.51	9.5	5.6	0.89%	12"	RCP	-
* P-25	S-25	S-26	845.65	846.24	#DIV/0!	24" x 38"	HERCP	-	-	
* P-25A	S-25	S-25A	846.65	846.78	25.5	22.5	0.58%	12"	RCP	-
* P-25B	S-25	S-25B	846.65	846.70	9.5	6.5	0.77%	12"	RCP	-
* P-25C	S-25B	S-25C	846.70	846.94	49	45.8	0.52%	12"	RCP	-
* P-26	S-26	S-26A	846.24	846.36	38.50	34.8	0.34%	24" x 38"	HERCP	-
* P-26A	S-26A	S-27	846.34	846.40	14.5	10.9	0.55%	24" x 38"	HERCP	-

SPECIFIC NOTES

[1] TOP OF CASTING ELEVATION SHALL 0.1' BELOW CURB ELEVATION, NOT 0.2' LOWER AS SHOWN IN S.D.D. 5.7.12B

STANDARD NOTES:

- ALL REBAR FOR FIELD POUR STRUCTURES SHALL BE EPOXY COATED. ANY EXPOSED STEEL SHALL BE TOUCHED UP OR RECOATED PRIOR TO USE.
- ALL FIELD Poured SAS STORM STRUCTURES SHALL BE CONSTRUCTED IN ACCORDANCE WITH STANDARD DETAIL DRAWING 5.7.3.
- ALL PRECAST SAS STORM STRUCTURES SHALL BE CONSTRUCTED IN ACCORDANCE WITH STANDARD DETAIL DRAWING 5.7.5.

NOTE: PLAN LENGTH (PAY LENGTH) IS FROM CENTER OF STRUCTURE TO CENTER OF STRUCTURE. PIPE LENGTH IS ACTUAL LENGTH OF PIPE FROM STRUCTURE WALL TO STRUCTURE WALL. SLOPE CALCULATED USING PIPE LENGTH.

STANDARD NOTES:

- ABBREVIATIONS: AE = APRON ENDWALL; RCP = REINFORCED CONCRETE PIPE; HERCP = HORIZONTAL ELLIPTICAL REINFORCED CONCRETE PIPE; DNA = DOES NOT APPLY; SAS = SEWER ACCESS STRUCTURE; LP = LOW POINT INLET STRUCTURE; FP = FIELD Poured STRUCTURE; TR = TOP OF CONCRETE ROOF; NCM = NO CROWN MATCH FOR PIPES; UD = UNDERDRAIN
- APPROXIMATE DISCHARGE E.I. GIVEN, ADJUST E.I. AND PIPE SLOPE IN THE FIELD.
- TOP OF CASTING GRADE GIVEN IS THE TOP OF CURB FOR INLET STRUCTURES AND THE FLOWLINE OF THE CLOSED CASTING FOR SAS'S.
- TOP OF CONCRETE ROOF (TR) IS 1.25' BELOW TOP OF CASTING UNLESS OTHERWISE NOTED.
- ALL REINFORCED CONCRETE PIPES TO BE CLASS III UNLESS OTHERWISE NOTED.
- SURVEYOR TO CONFIRM THAT ALL INLET STATION / OFFSETS LINE UP WITH PROPOSED CURB AND GUTTER.
- ALL STRUCTURES CALLED OUT AS FIELD Poured SHALL BE FIELD Poured. ALL OTHER STRUCTURES (NOT INDICATED AS FIELD Poured) SHALL BE SUBMITTED TO CITY ENGINEERING FOR APPROVAL IF PRECAST STRUCTURES ARE PREFERRED. CONTACT KYLE FRANK OF CITY ENGINEERING AT (608) 266-4098 FOR PRECAST APPROVALS, FAX SHOP DRAWINGS TO (608)264-9275, OR EMAIL SHOP DRAWINGS TO KFRANK@CITYOFMADISON.COM.

STORM SEWER SCHEDULE

*REV 8/14/2020 KDF

E. DAYTON STREET ASSESS. DIST. - 2020	SHEET NO.
PROJECT NO. 11739	U-6
STORM SEWER SCHEDULE	
CITY OF MADISON	

REMOVE STORM STRUCTURES

STRUC. NO.	STATION	LOCATION (OFFSET)	TYPE	NOTES
E. DAYTON STREET				
R-1	107+32.57	RT-21.19	INLET	-
R-2	107+29.16	LT-20.98	INLET	-
R-20	106+47.61	RT-17.65	3X3 SAS	-
R-20A	106+41.28	RT-17.75	INLET	-
R-20B	106+49.50	LT-20.02	INLET	-
R-21	104+11.70	LT-19.93	5X7 SAS	-
R-21A	103+63.64	LT-18.48	INLET	-
R-21B	103+60.01	RT-18.62	INLET	-
R-22	103+45.46	LT-20.07	5X7 SAS	-
* R-23	100+53.33	LT-23.23	5X7 SAS	-
* R-24	100+66.75	LT-17.50	INLET	-

REMOVE STORM PIPES

REMOVE NO.	REMOVE FROM	REMOVE TO	LGTH (FT)	PIPE SIZE	PIPE TYPE	PAID (Y/N)	NOTES
E. DAYTON STREET							
RP-20	R-20B	R-21	233	2.3'X1.5'	BOX	Y	-
RP-20A	ADJ-3	R-20	23	21"	RCP	Y	-
RP-21	R-21		63	2.3'X1.5'	BOX	Y	-
RP-21A	R-21B	R-21A	36	12"	RCP	Y	-
RP-22	EX AS #5147-038	R-22	285	2.3'X1.5'	BOX	Y	-

STORM STRUCTURE ADJUSTMENTS

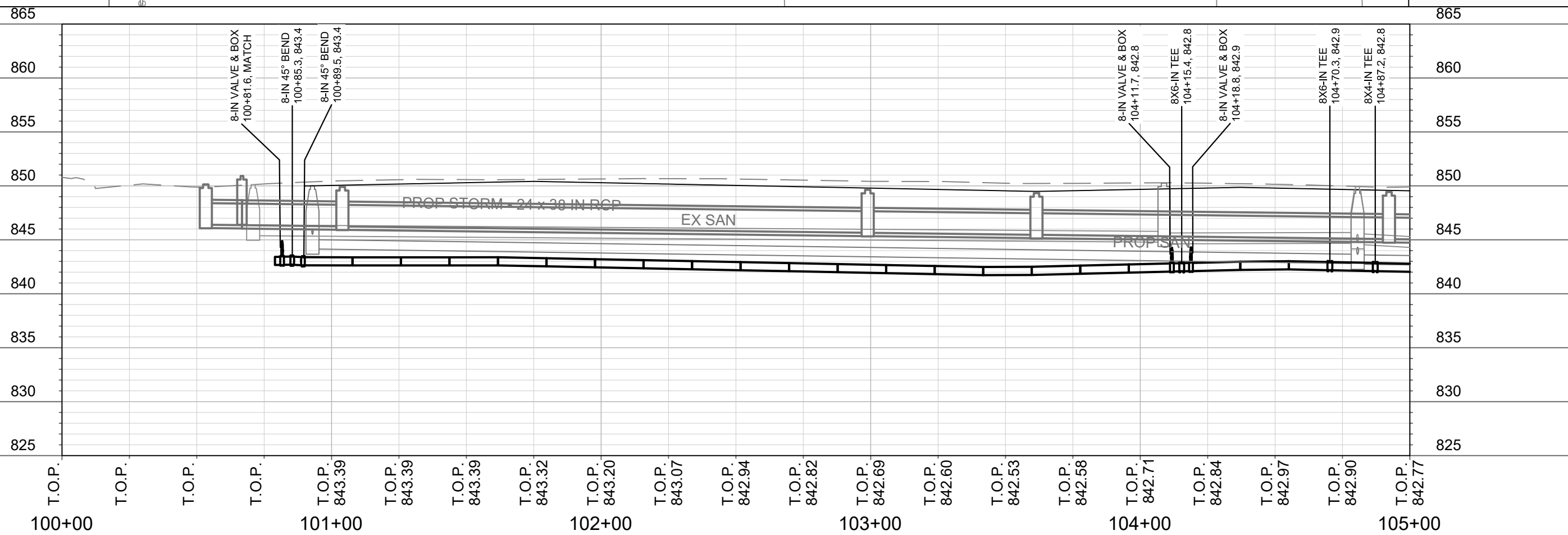
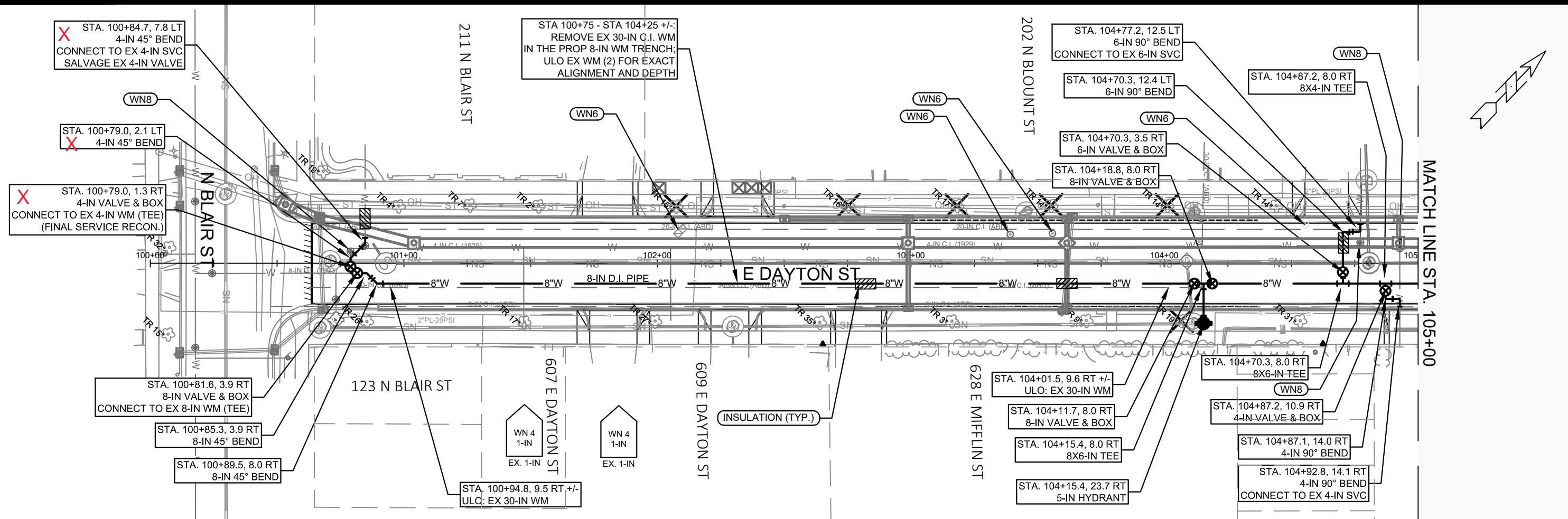
ADJUST NO.	STATION	LOCATION (OFFSET)	TYPE	EX. TOC ELEV.	PROP ELEV.	ADJUST DIFF.	NOTES
E. DAYTON STREET							
ADJ-1	106+75.68	LT-18.37	SAS	848.97	848.98	0.01	-
ADJ-2	107+07.95	LT-14.04	SAS	849.06	849.05	-0.01	-
ADJ-3	106+75.14	RT-21.59	SAS	848.94	848.74	-0.20	-
ADJ-4	107+11.54	RT-20.77	SAS	848.65	848.70	0.05	-

STORM SEWER ULOs (5 ADDITIONAL INDISTRIBUTED ULOs INCLUDED)

ULO NO.	STATION	LOCATION (OFFSET)	TYPE	TOP ELEV.	NOTES
E. DAYTON STREET					
* ULO1.1	102+51.40	LT-24.00	12" STM CLAY	848.57	-
* ULO1.2	102+53.80	LT-20.30	STM BOX TOP	848.00	-
* ULO2	102+78.50	RT-25.80	8" STM PVC	847.86	-
* ULO3	104+92.28	LT-23.59	PVT STORM	-	DID NOT FIND
* ULO4	111+59.70	RT-9.00	ELEC DUCT	847.55	CONFLICT, STM REVISED, BTM=845.16
* ULO 5.1	106+54.00	RT-16.00	2" PVC TELE	845.55	[1], CONFLICT
* ULO5.2	106+54.00	RT-16.00	ELEC DUCT	843.99	ELEV IS ESTIMATED
* ULO5.3	106+55.30	RT-16.50	2" PVC TELE	844.91	[1], CONFLICT
* ULO6.1	106+59.80	RT-15.90	ELEC DUCT	843.62	ELEV IS ESTIMATED
* ULO6.2	106+59.80	RT-16.00	2" PVC TELE	845.16	[1], CONFLICT
* ULO6.3	106+59.60	RT-15.40	STRUCT EDGE	845.96	-
* ULO7.1	108+20.90	RT-12.00	5" CLAY SAN LAT	844.49	OK TO GET UNDER ELEC DUCT SHOWN IN ULO7.2
* ULO7.2	108+23.40	RT-10.00	ELEC DUCT	847.54	BTM=844.96

SPECIFIC NOTES

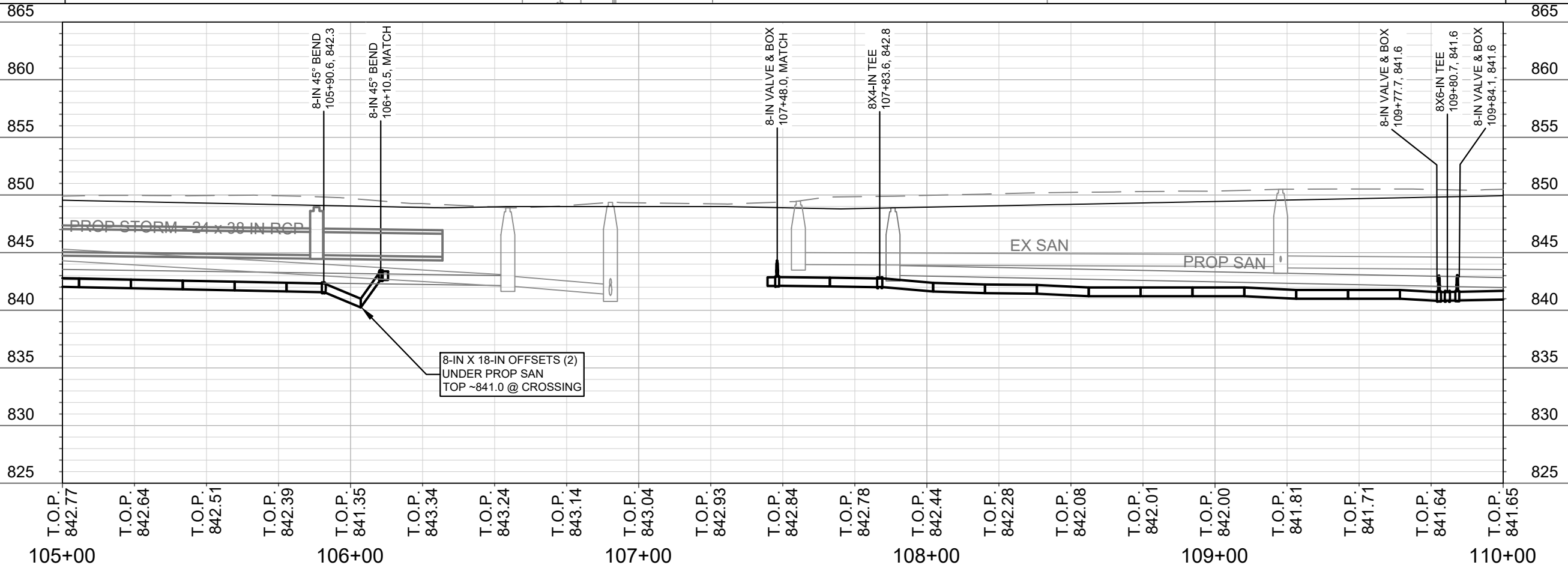
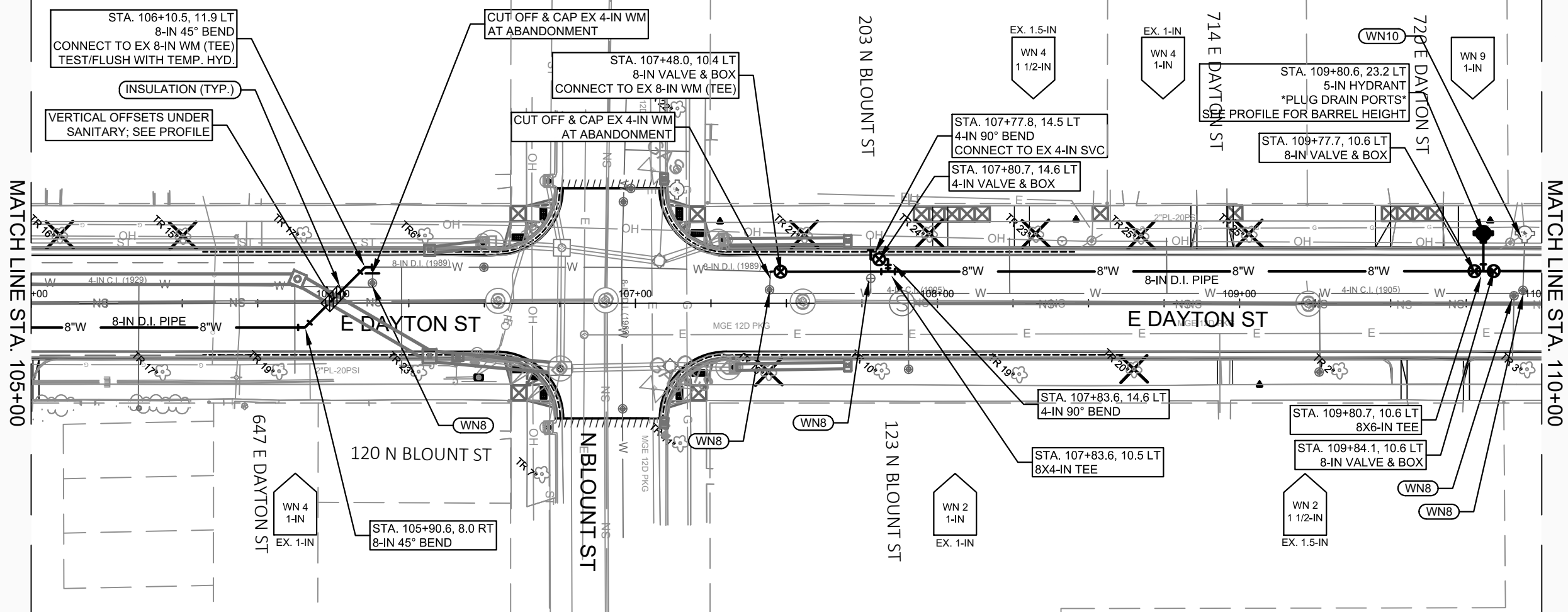
[1] CONTRACTOR SHALL COORDINATE WITH PRIVATE UTILITY OWNER TO RELOCATE FACILITY



DATE	BY
08/20/20	PEH
REVISION	1
DATE	8/20/2020 9:20 AM
DESIGNED BY	PEH
SCALE	1" = 40'
MARK	11739
CONTRACT NO.	8349
PROJECT	11739
W-1	

11739
MADISON, WI
E DAYTON ST ASSESSMENT DISTRICT - 2020
CONTRACT NO.: 8349
EAST DAYTON STREET - WATER PLAN AND PROFILE
\\gisserver\data\DESIGN\Projects\11739\CAD\Water\11739WU-Water.dwg

11739
W-1



MARK	REVISION	DATE	BY
1	08.20.20 PEH	08.20.20	PEH
2	1	08.20.20	PEH

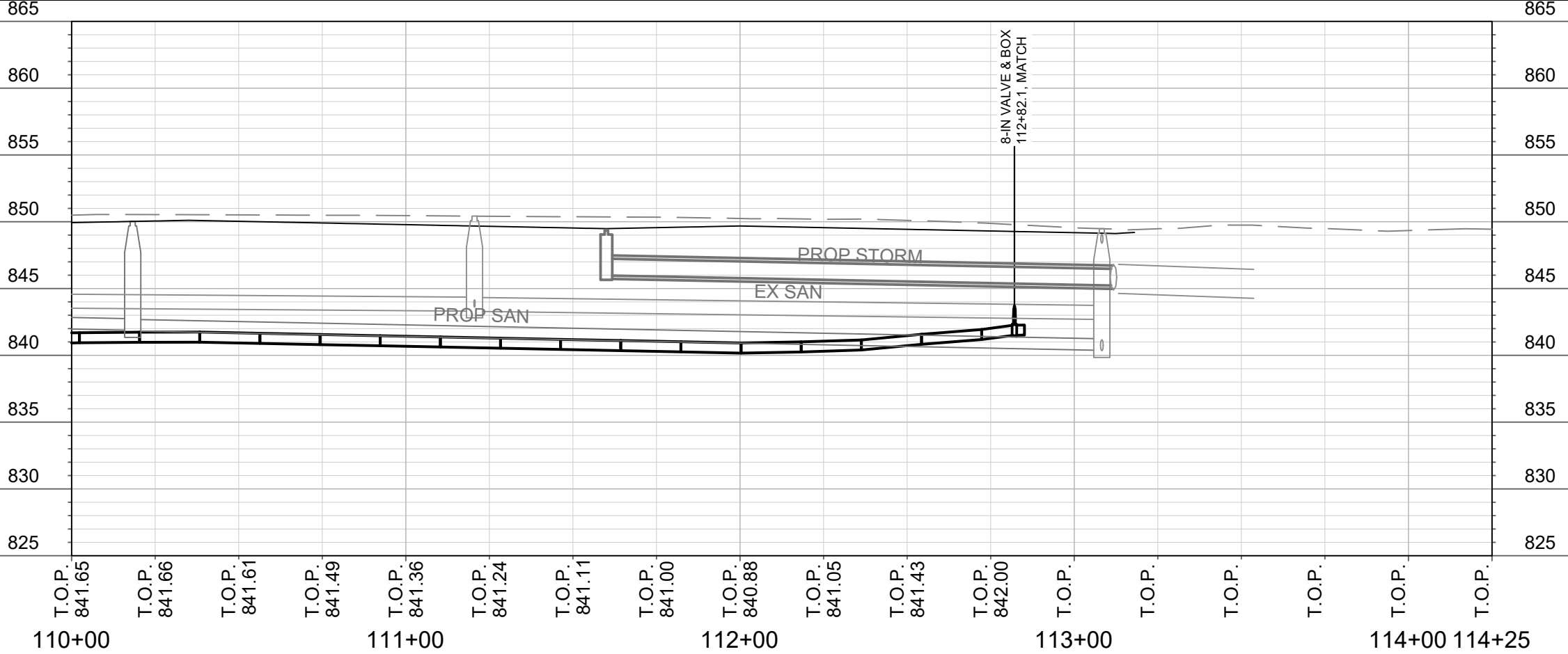
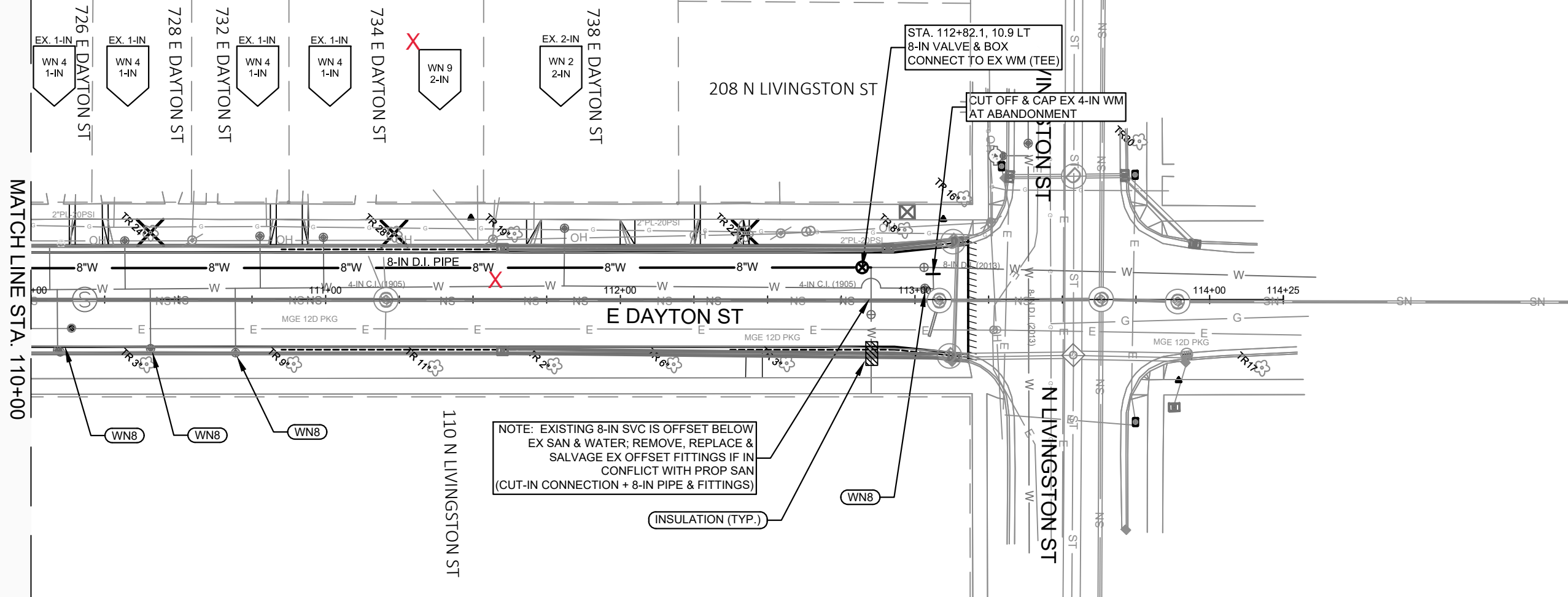
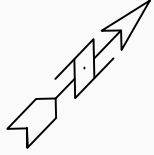
Designed By: PEH Date: 8/20/2020 9:21 AM Scale: 1" = 40'

11739 W-2

11739
MADISON, WI
8349
CONTRACT NO:

EAST DAYTON STREET - WATER PLAN AND PROFILE
E DAYTON ST ASSESSMENT DISTRICT - 2020
\\gisserver\data\DESIGN\Projects\11739\CAD\Water\11739WU-Water.dwg

11739
W-2

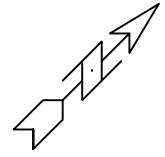


MARK	08.20.20	PEH	BY
REVISION	1		
DESIGNED BY	PEH	DATE	08/20/2020 9:21 AM
SCALE	1" = 40'		
PROJECT NO.	11739		
CONTRACT NO.	8349		
DISTRICT	W-3		

11739
 MADISON, WI
 EAST DAYTON STREET - WATER PLAN AND PROFILE
 E DAYTON ST ASSESSMENT DISTRICT - 2020
 \\Gisserver\data\DESIGN\Projects\11739\CAD\Water\11739WU-Water.dwg

11739
 W-3

DISCLAIMER NOTE:
THE WATER IMPACT PLAN IS PROVIDED FOR REFERENCE PURPOSES
TO AID PLANNING CONNECTION POINT ISOLATION AND PREPARING
NOTIFICATION LISTS DURING PLANNED OUTAGES. REQUEST ANY
ALTERNATIVE CONNECTION METHODS IN WRITING, PER SPECS.



N. BLAIR ST.

E. DAYTON ST.

E. DAYTON ST.

N. BLOUNT ST.

N. LIVINGSTON ST.

8"W

8"W

8"W

8"W

8"W

SCALE: #####
DESIGNED BY: PEH
MADISON WATER UTILITY
119 E OLIN AVE, MADISON, WI 53713
PRINTING DATE: 6/15/2020

E DAYTON ST ASSESSMENT DISTRICT - 2020
WATER IMPACT PLAN
CITY OF MADISON, WISCONSIN



11739
W-4



CONSTRUCTION NOTES:

1. CONSTRUCT NEW WATER MAIN 6.0' BELOW FINISHED GRADE, UNLESS OTHERWISE NOTED. INSULATE MAIN WITH POLYSTYRENE BOARD AT UTILITY CROSSINGS OR OTHER AREAS IDENTIFIED BY ENGINEER AS HAVING INADEQUATE COVER.
2. VERIFY SIZE OF EXISTING WATER SERVICES AND RECONNECT SERVICES AS INDICATED.
3. MINIMIZE DISRUPTION OF SERVICE TO CUSTOMERS. NOTIFY PER CONTRACT REQUIREMENTS OF ANY PLANNED WATER OUTAGE.
4. THE EXISTING UTILITIES SHOWN ON THIS REPRESENT THE BEST INFORMATION AVAILABLE TO THE WATER UTILITY AT THE TIME OF PLAN REPARATION. CONTRACTOR IS RESPONSIBLE OR HAVING EACH UTILITY LOCATED PRIOR TO COMMENCING WORK.

- WN1 REPLACE THE EXISTING LEAD SERVICE WITH A NEW COPPER SERVICE.
- WN-2 EXTEND AND RECONNECT THE EXISTING COPPER SERVICE TO THE NEW WATER MAIN.
- WN-3 EXISTING SERVICE TO BE ABANDONED WHEN THE WATER MAIN IS CUT OFF.
- WN-4 DISCONNECT FROM THE OLD WATER MAIN AND RECONNECT THE EXISTING COPPER WATER SERVICE LATERAL TO THE NEW WATER MAIN.
- WN-5 RELOCATE THE EXISTING FIRE HYDRANT.
- WN-6 ABANDON WATER VALVE ACCESS STRUCTURE.
- WN-7 FURNISH AND INSTALL THE NEW TOP SECTION FOR THE WATER ACCESS STRUCTURE.
- WN-8 ABANDON THE VALVE BOX.
- WN-9 FURNISH THE DITCH, COMPACTION, AND ALL MATERIALS AND LABOR FOR THE INSTALLATION OF NEW SERVICE LATERAL.
- WN-10 REMOVE AND SALVAGE EXISTING HYDRANT
- WN-11 REPLACE THE EXISTING COPPER SERVICE WITH A COPPER SERVICE
- WN-20+ SEE WATER IMPACT PLAN FOR CONNECTION POINT ISOLATION AND WATER SHUT-OFF NOTIFICATION INFORMATION.

WATER UTILITY ULO SCHEDULE				
ULO #	UTILITY WATER	STATION	OFFSET	SHEET
#1	WATER	100+95	9.5 RT	W-1
#2	WATER	104+00	9.5 RT	W-1

ESTIMATE OF NEW MATERIALS*

DESCRIPTION	QUANTITY	UNIT
4-INCH WATER MAIN	40	LNFT
6-INCH WATER MAIN	60	LNFT
8-INCH WATER MAIN	1120	LNFT
4-INCH WATER VALVE	3	LNFT
6-INCH WATER VALVE	1	EACH
8-INCH WATER VALVE	7	EACH
4-IN 90° BEND	4	EACH
6-IN 90° BEND	2	EACH
4-IN 45° BEND	2	EACH
8-IN 45° BEND	4	EACH
8-IN OFFSET FITTING (110 N LIVINGSTON SVC)	2 (AS REQ.)	EACH
8-IN X 18-IN OFFSET FITTING	2	EACH
8X4-IN TEE	2	EACH
8X6-IN TEE	3	EACH
1-INCH COPPER PIPING	AS REQ.	LNFT
1.5-INCH COPPER PIPING	AS REQ.	LNFT
2-INCH COPPER PIPING	AS REQ.	LNFT
5-IN HYDRANT	2	EACH

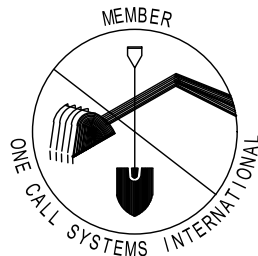
ESTIMATE OF REUSED AND SALVAGED MATERIALS*

DESCRIPTION	QUANTITY	TYPE
5-IN HYDRANT	1	SALVAGE
4-IN WATER VALVE	1	SALVAGE
8-IN OFFSET FITTINGS (110 N LIVINGSTON SVC)	2-4	SALVAGE
8-IN MJ PLUG	4	SALVAGE

* ESTIMATES OF MATERIALS ARE FOR INFORMATION ONLY. ENGINEER DOES NOT GUARANTEE ACCURACY OF MATERIAL TAKE-OFF.

TO OBTAIN LOCATION OF PARTICIPANTS' UNDERGROUND FACILITIES BEFORE YOU DIG IN WISCONSIN
 CALL DIGGERS HOTLINE TOLL FREE
 811 OR 1-800-242-8511
 FAX-A-LOCATE 1-800-338-3860
 TDD (FOR HEARING IMPAIRED) 1-800-542-2289

WIS. STATUTE 182.0175 (1974) REQUIRES MIN. OF 3 WORK DAYS NOTICE BEFORE YOU EXCAVATE.

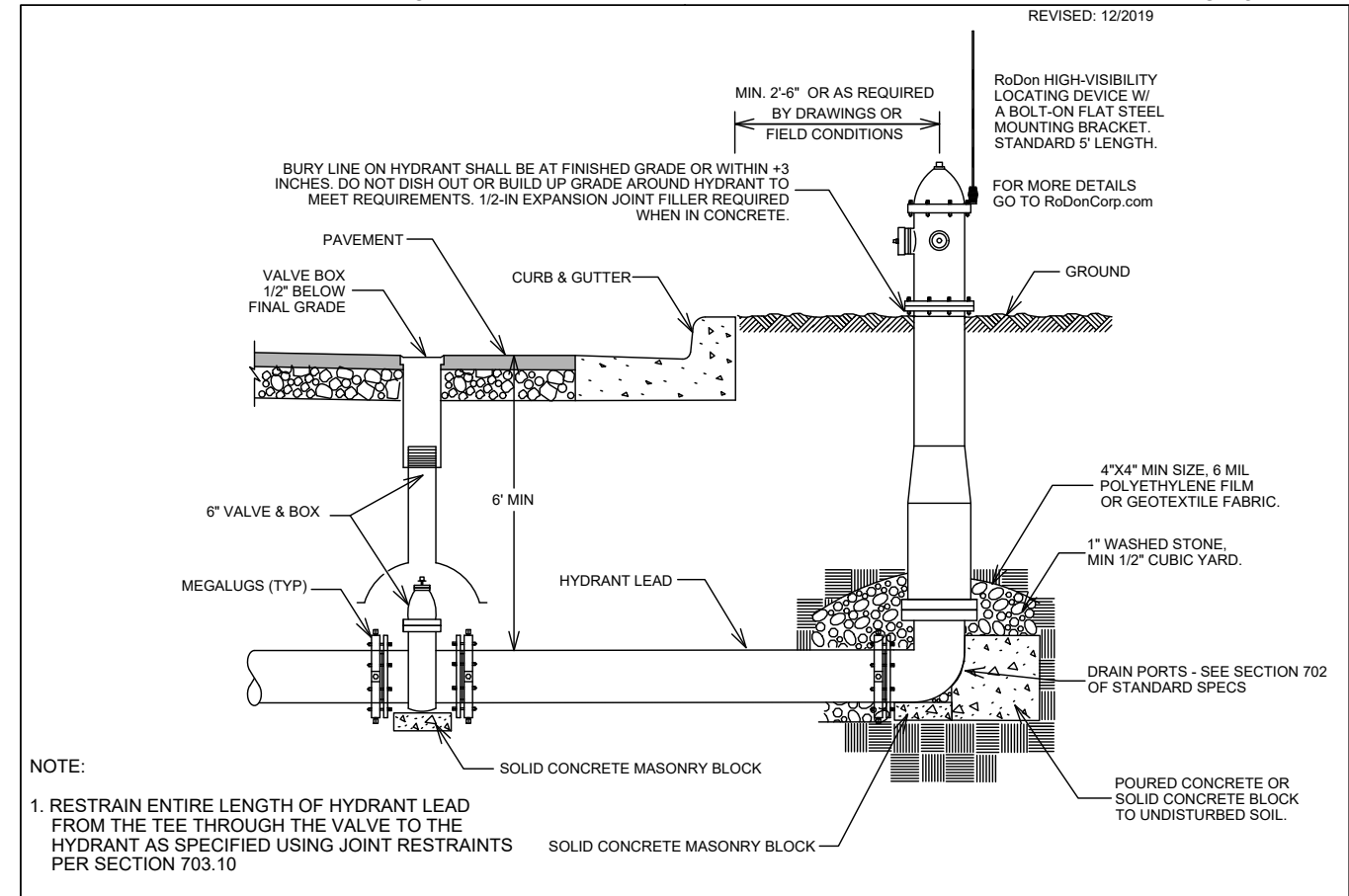


DISCLAIMER NOTE: UTILITY LOCATIONS SHOWN ARE APPROXIMATE ONLY. IT SHALL BE THE CONTRACTOR'S RESPONSIBILITY TO DETERMINE THE EXACT HORIZONTAL AND VERTICAL LOCATION OF ALL EXISTING UNDERGROUND AND OVERHEAD UTILITIES PRIOR TO COMMENCING WORK.

PART VII - WATER MAINS AND SERVICE LATERALS

DETAIL DRAWING NO. 7.04

REVISED: 12/2019



NOTE:

1. RESTRAIN ENTIRE LENGTH OF HYDRANT LEAD FROM THE TEE THROUGH THE VALVE TO THE HYDRANT AS SPECIFIED USING JOINT RESTRAINTS PER SECTION 703.10

CITY OF MADISON WATER UTILITY

NOT TO SCALE

TYPICAL HYDRANT INSTALLATION

E DAYTON ST ASSESSMENT DISTRICT - 2020

WATER ESTIMATE OF MATERIALS

CITY OF MADISON, WISCONSIN

SCALE: N/A

DESIGNED BY: PEH

MADISON WATER UTILITY

119 E OLIN AVE, MADISON, WI 53713

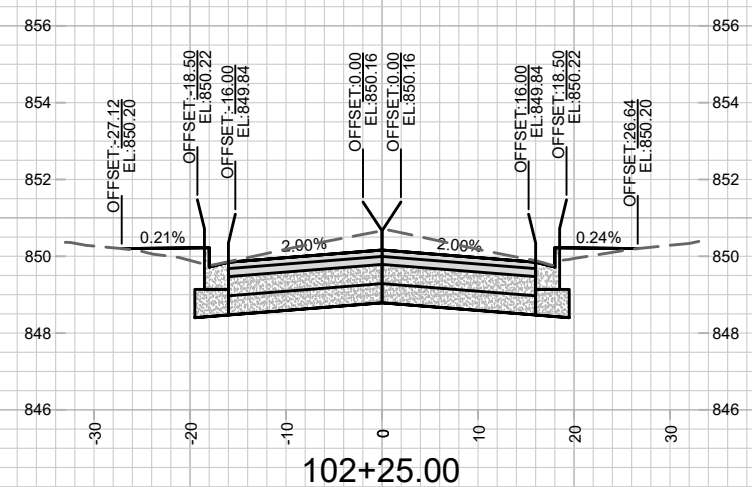
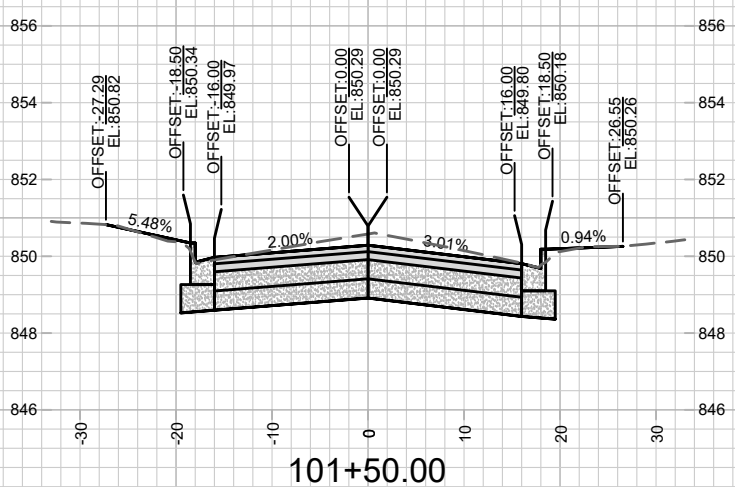
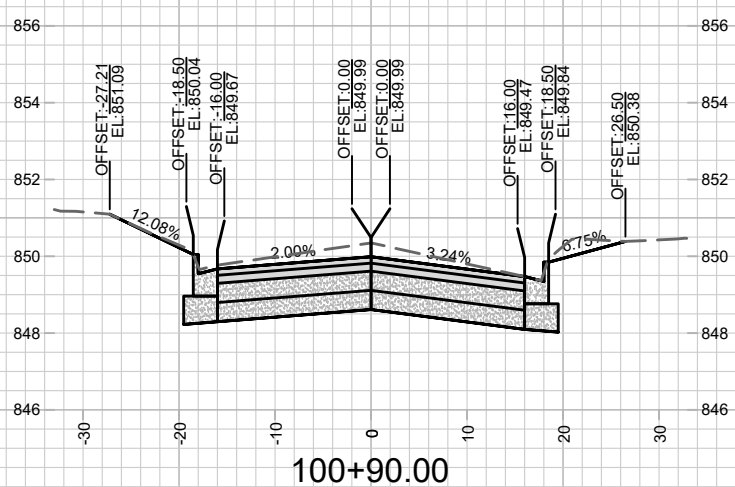
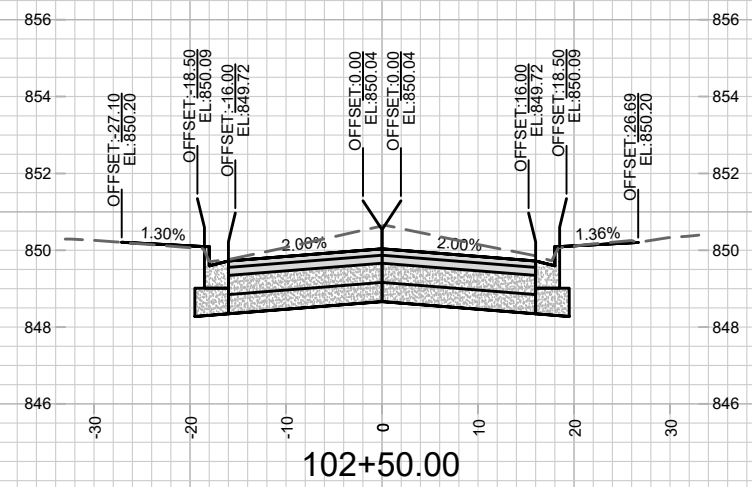
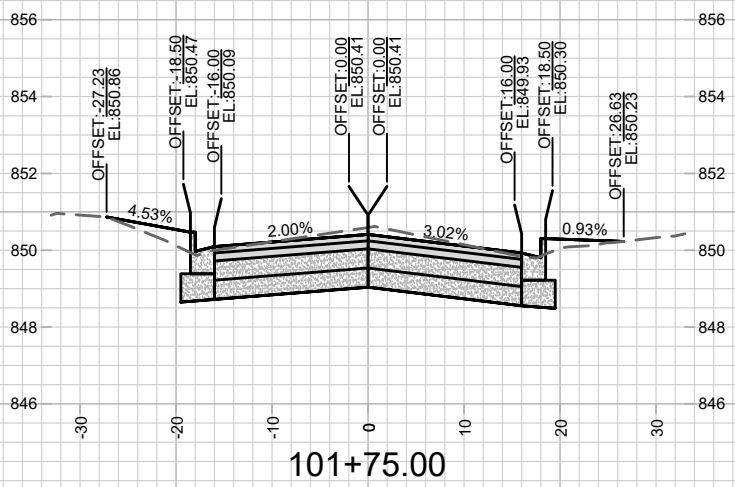
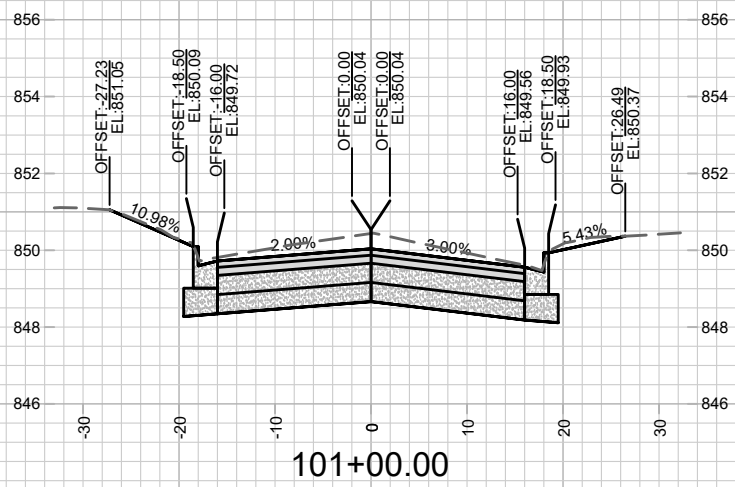
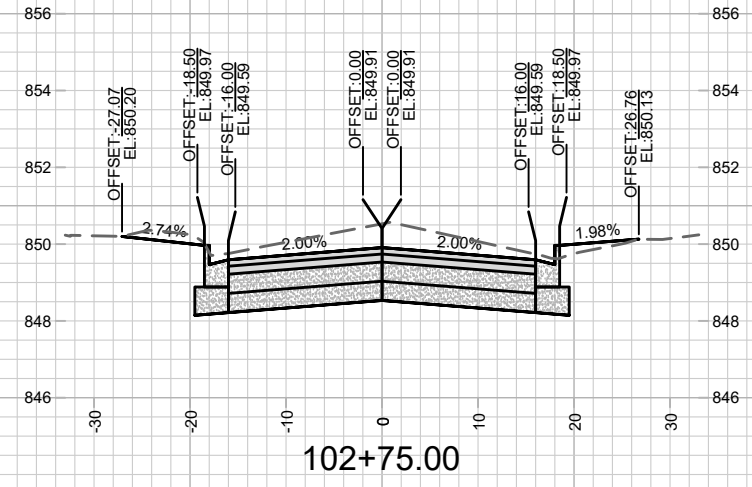
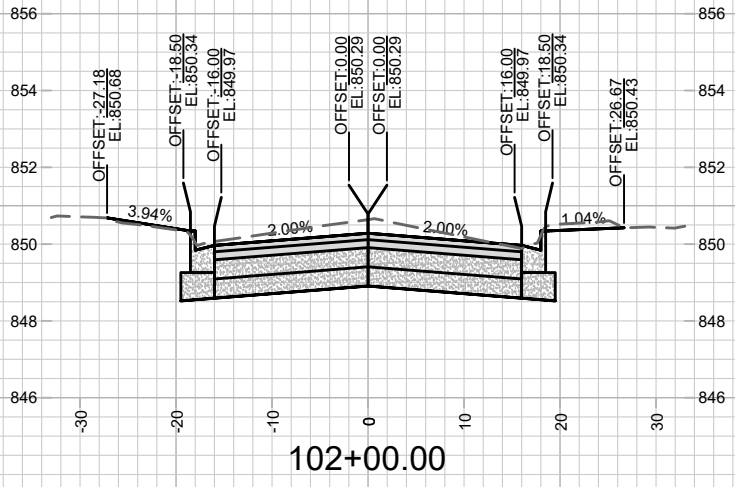
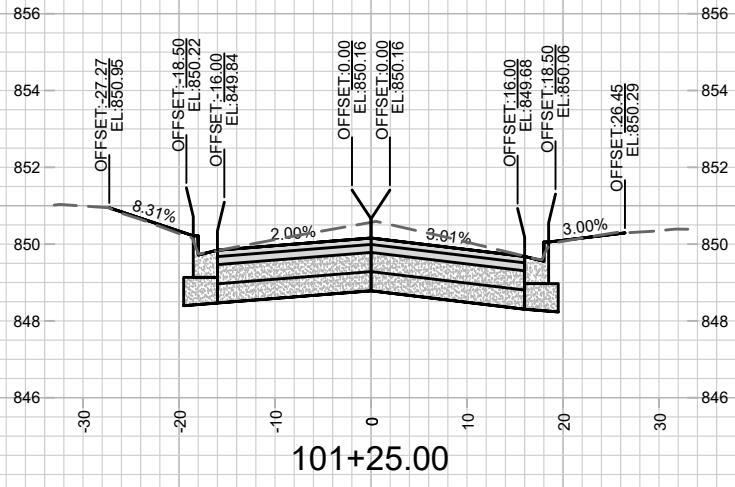
PRINTING DATE: 6/15/20

CONTRACT NO: 8349



11739

W-5



MARK	REVISION	DATE	BY

11739
MADISON, WI
8349

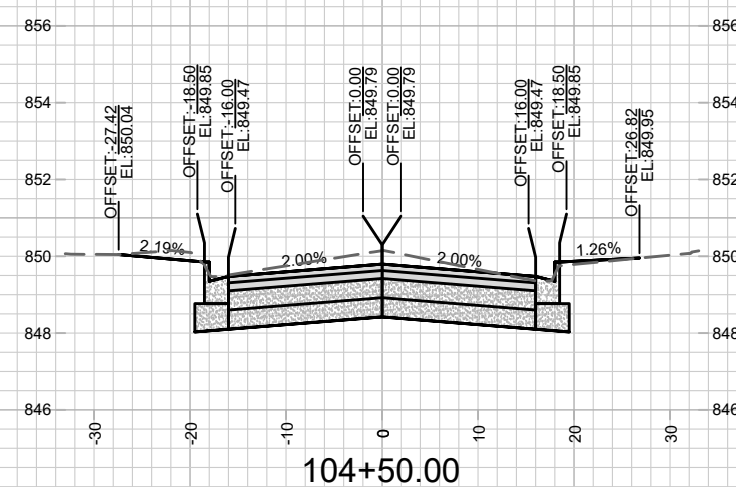
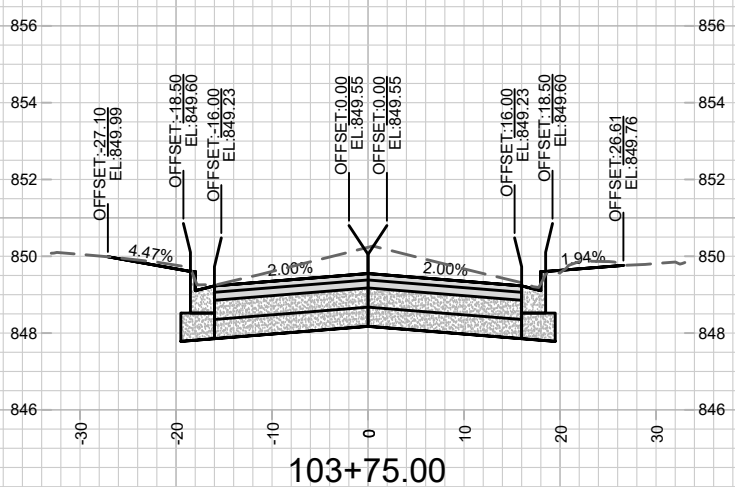
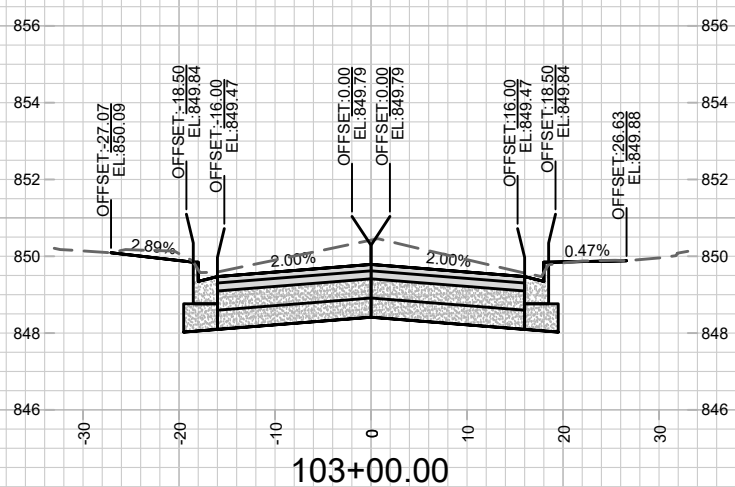
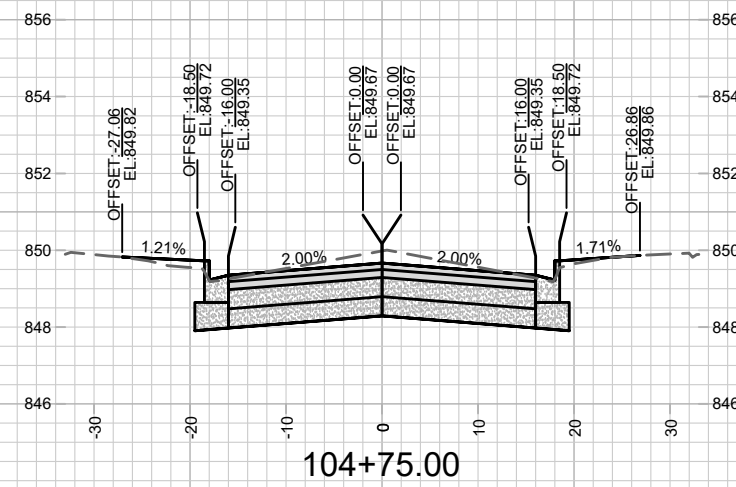
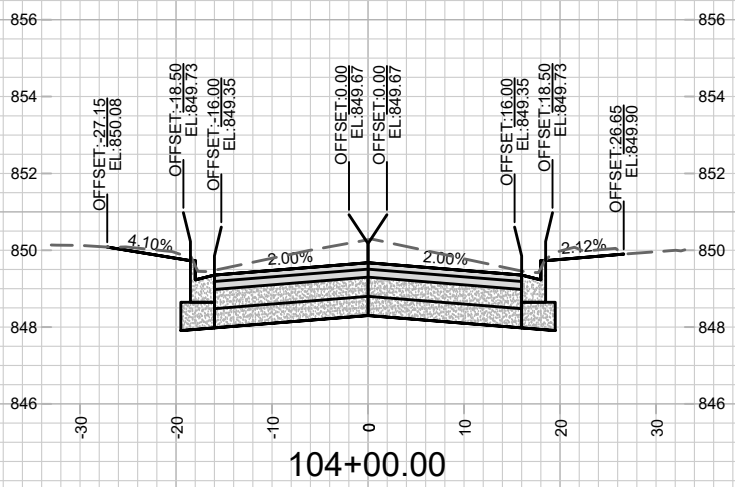
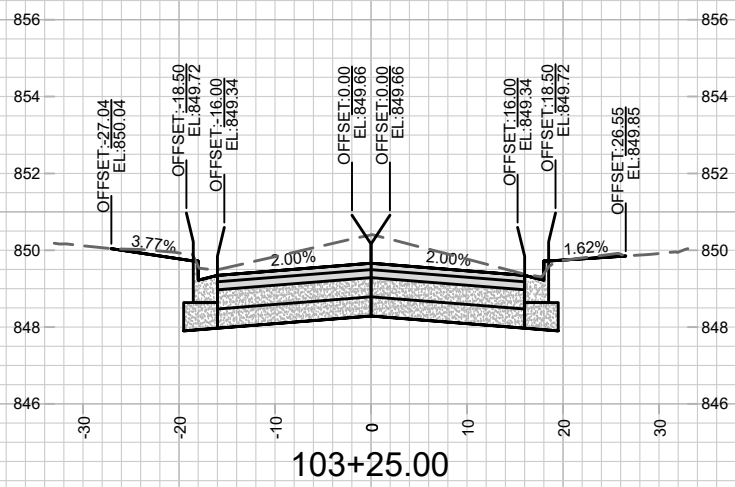
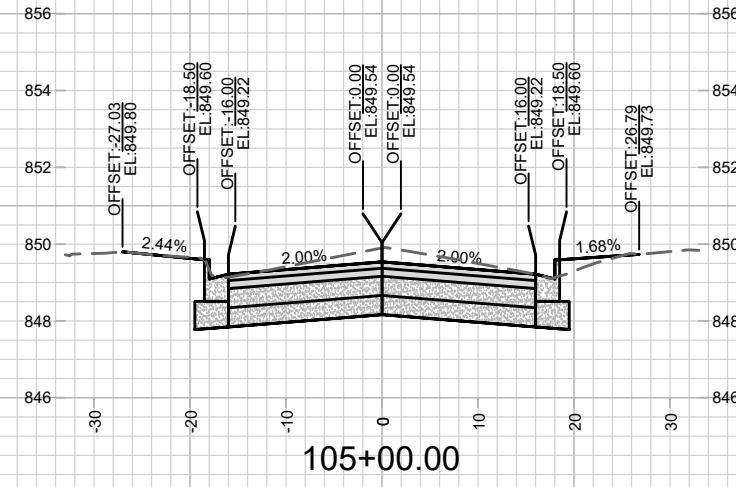
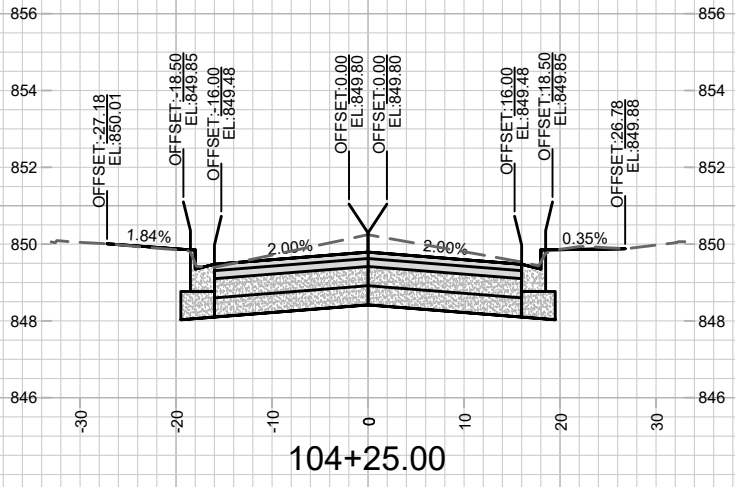
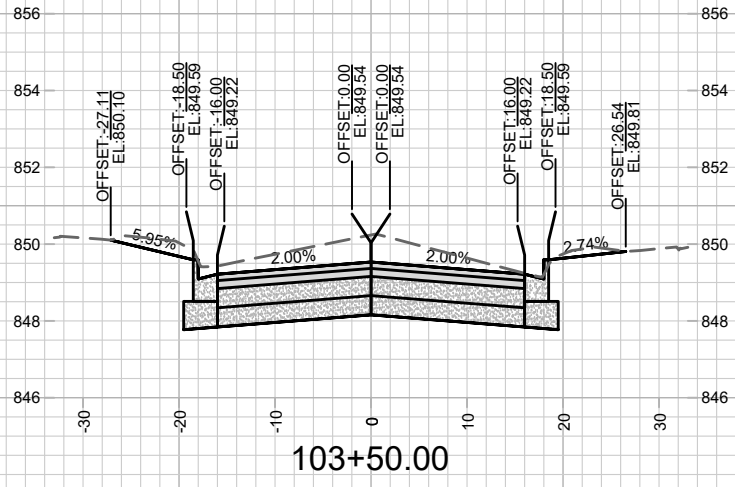
CROSS SECTIONS - E DAYTON ST
E DAYTON ST ASSESSMENT DISTRICT - 2020
M:\DESIGN\Projects\11739\CAD\Streets\11739EN-Corridor.dwg



11739
X-1

CONTRACT NO:

11739
Date: 6/16/2020 1:28 PM
Scale: 1" = 20'



MARK	REVISION	DATE	BY
11739	11739	6/16/2020 1:28 PM	X-2

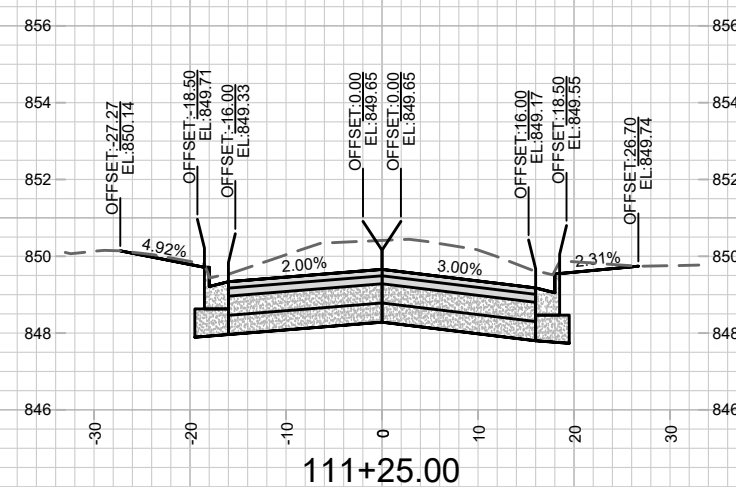
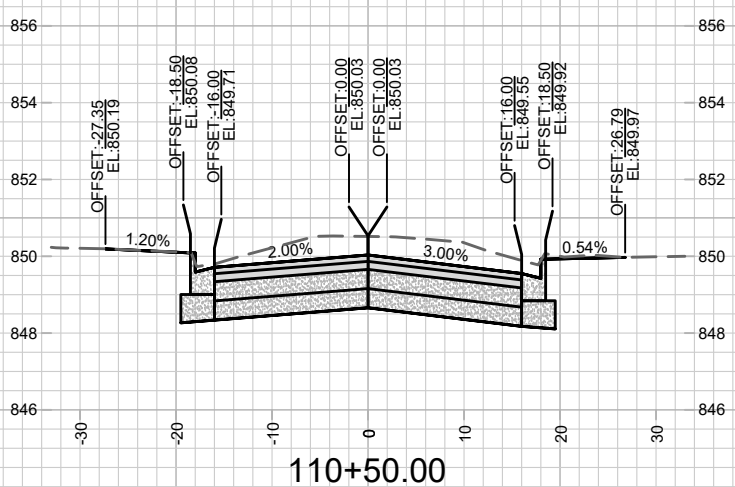
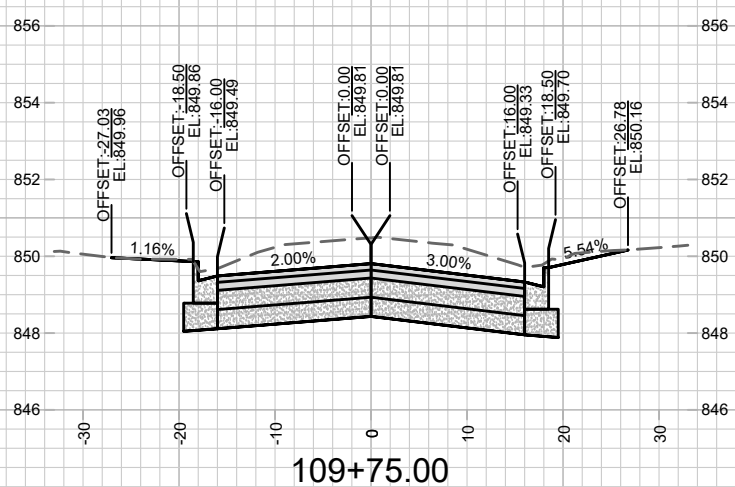
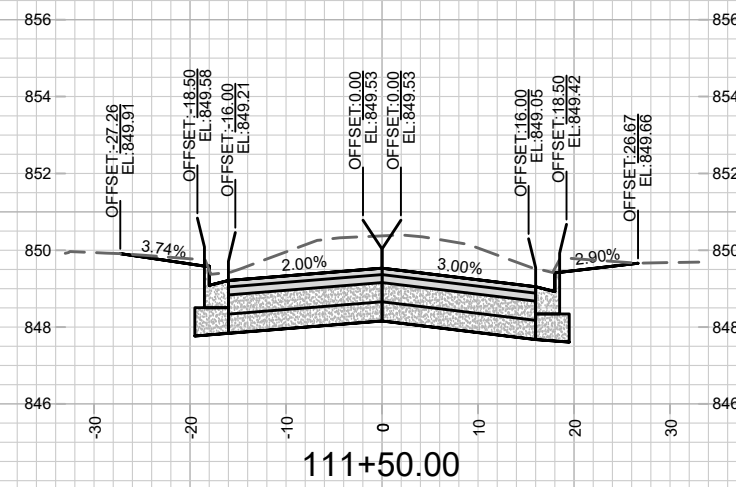
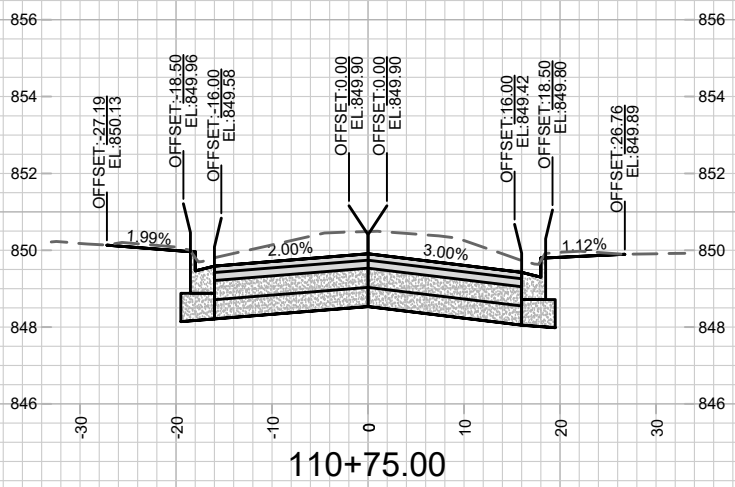
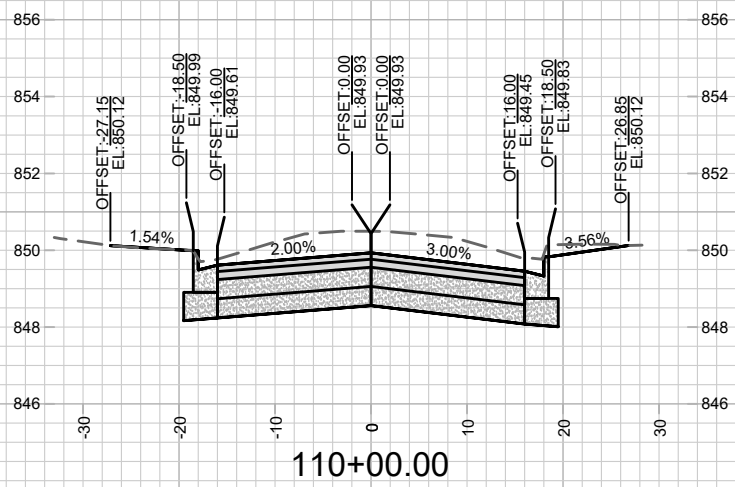
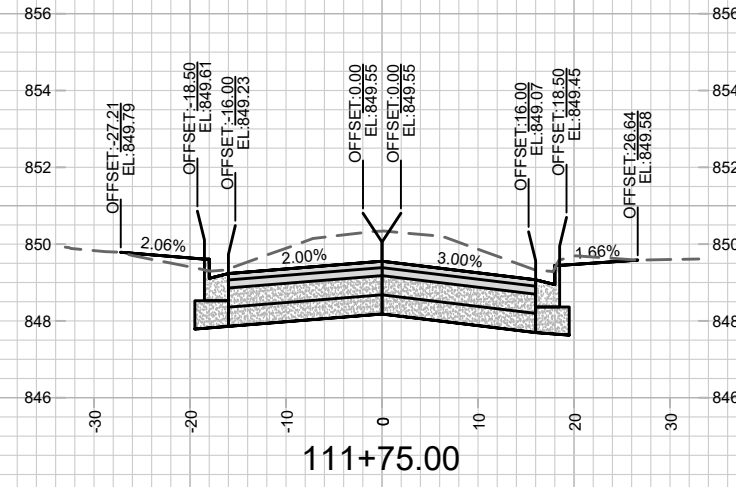
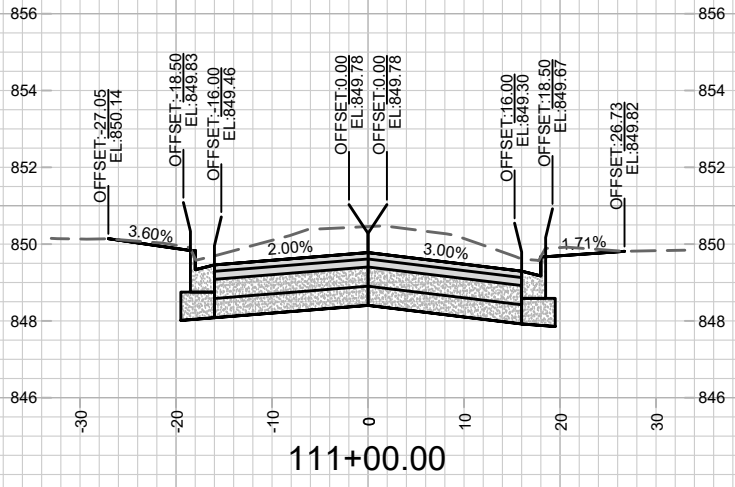
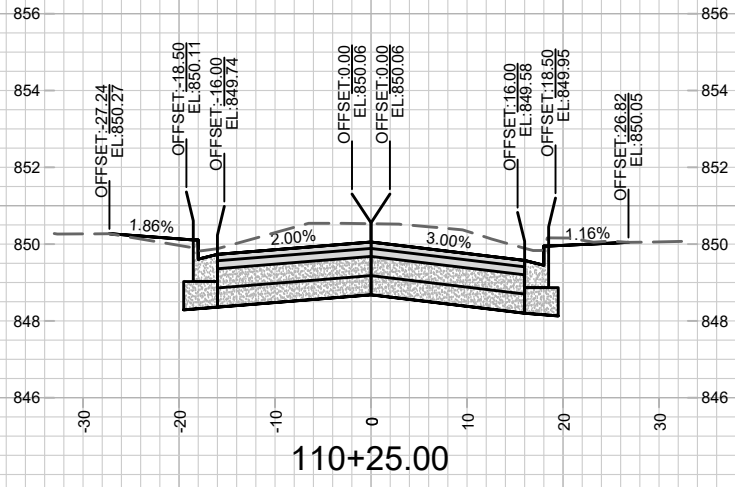
11739
MADISON, WI
8349

CONTRACT NO:

CROSS SECTIONS - E DAYTON ST
E DAYTON ST ASSESSMENT DISTRICT - 2020
M:\DESIGN\Projects\11739\CAD\Streets\11739EN-Corridor.dwg



11739
X-2

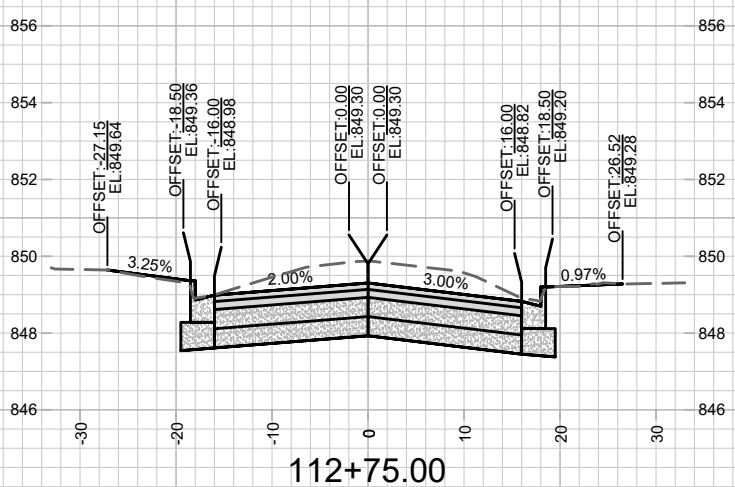
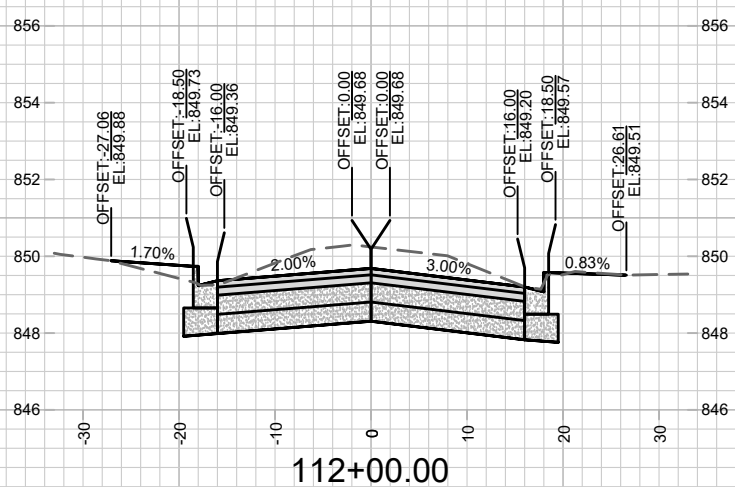
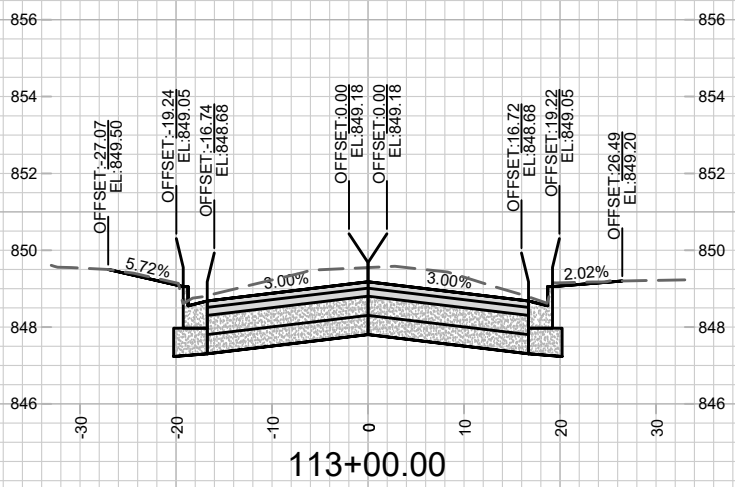
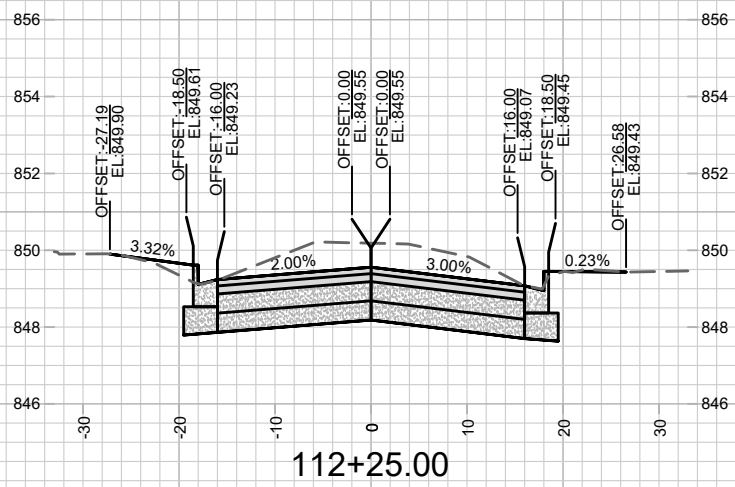
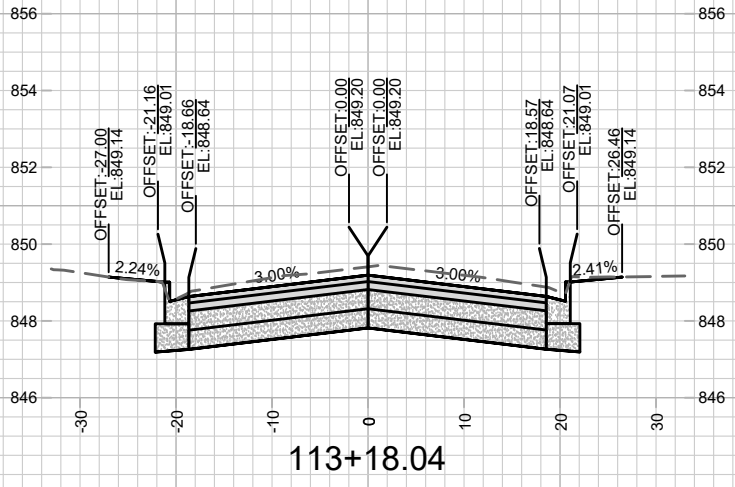
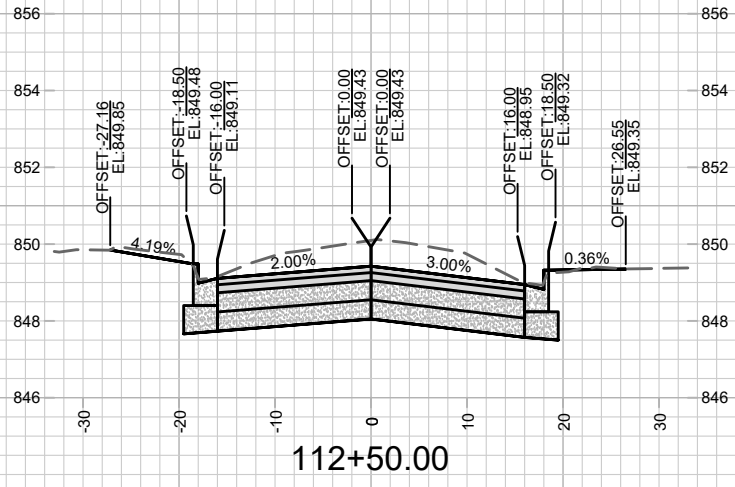


MARK	REVISION	DATE	BY

11739
MADISON, WI
8349
CONTRACT NO:

CROSS SECTIONS - E DAYTON ST
E DAYTON ST ASSESSMENT DISTRICT - 2020
M:\DESIGN\Projects\11739\CAD\Streets\11739EN-Corridor.dwg





MARK	REVISION	DATE	BY

11739
 MADISON, WI
 8349
 CONTRACT NO:

CROSS SECTIONS - E DAYTON ST
 E DAYTON ST ASSESSMENT DISTRICT - 2020
 M:\DESIGN\Projects\11739\CAD\Streets\11739EN-Corridor.dwg

