

BID OF _____

2012

PROPOSAL, CONTRACT, BOND AND SPECIFICATIONS

FOR

TENNEY PARK MAINTENANCE BRIDGE

CONTRACT NO. 6656

IN

MADISON, DANE COUNTY, WISCONSIN

AWARDED BY THE COMMON COUNCIL
MADISON, WISCONSIN ON _____

PLEASE RETURN PLANS AND SPECIFICATIONS TO:

**CITY ENGINEERING DIVISION
1600 EMIL STREET
MADISON, WISCONSIN 53713**

www.cityofmadison.com/business/pw

**TENNEY PARK MAINTENANCE BRIDGE
CONTRACT NO. 6656**

INDEX

SECTION A: ADVERTISEMENT FOR BIDS.....A-1

SECTION B: INSTRUCTIONS TO BIDDERSB-1

SECTION C: SBE.....C-1

SECTION D: SPECIAL PROVISIONSD-1

SECTION E: PROPOSALE-1

SECTION F: BID BONDF-1

SECTION G: AGREEMENTG-1

SECTION H: PAYMENT AND PERFORMANCE BONDH-1

SECTION I: PREVAILING WAGE RATE I-1

This Proposal, and Agreement have
been prepared by:

**CITY PARKS DIVISION
CITY OF MADISON
MADISON, DANE COUNTY, WISCONSIN**



Kevin Briski, Parks Superintendant

SECTION A: ADVERTISEMENT FOR BIDS

REQUEST FOR BID FOR PUBLIC WORKS CONSTRUCTION CITY OF MADISON, WISCONSIN

A BEST VALUE CONTRACTING MUNICIPALITY

CONTRACT NO.	PROJECT NAME:
6656	TENNEY PARK MAINTENANCE BRIDGE
SBE GOAL	9%

Plans and Specifications are available at 1600 Emil Street, Madison, WI 53713; 608-267-1197 or on our website at www.cityofmadison.com/business/pw/contracts/openforBid.cfm.

PREQUALIFICATIONS

Bidders who have not been prequalified by the City Engineer and Affirmative Action Director for the period of **February 1, 2012 to January 31, 2013** must submit their application on or before 1:00 p.m., **SEPTEMBER 7, 2012**, Room 115, City-County Building, Madison, WI 53703. Postmark is not applicable. Contractors be prequalified by the City Engineer including an affirmative action plan approved by the Affirmative Action Director prior to the bid opening or the bid will be rejected. Forms are available at the same location or on our website at www.cityofmadison.com/business/pw/forms.cfm.

PRE-BID MEETING

Representatives of the Affirmative Action Department will be present to discuss the Small Business Enterprise requirements on **AUGUST 31, 2012** at 1:00 PM at 1600 Emil Street, Madison Wisconsin.

OTHER REQUIREMENTS

Sealed bids must be accompanied with a Bid Bond equal to at least 5% of the bid or a Certificate of Annual/Biennial Bid Bond or certified check, payable to the City Treasurer.

Prevailing Wage Rates may be required and are attached in Section I of the contract. See Special Provisions to determine applicability.

Deadline for the Submittal of Bid is **SEPTEMBER 7, 2012** by 1:00 PM, at 1600 Emil Street, Madison, WI 53713.

Bid Opening will be on **SEPTEMBER 14, 2012** at 1:30 PM at 1600 Emil Street, Madison, WI 53713.

REQUEST FOR BIDS FOR PUBLIC WORKS CONSTRUCTION FOR THE CITY OF MADISON, WISCONSIN

A BEST VALUE CONTRACTING MUNICIPALITY

Plans and Specifications for Public Works Projects that are open for bid are available on the City of Madison website at <http://www.cityofmadison.com/business/PW/contracts/openforBid.cfm> or by calling City Engineering at 608-266-4751.

Sealed bids must be accompanied with a Bid Bond equal to at least 5% of the bid or a Certificate of Annual/Biennial Bid Bond or certified check, payable to the City Treasurer.

Prevailing Wage Rates may be required and are attached in Section I of the contract. See Special Provisions to determine applicability.

Bidders must be prequalified with the City Engineer and the Affirmative Action Director. Deadline date for submittal of application is noticed on our website. Forms are available on the web at <http://www.cityofmadison.com/business/pw/forms.cfm> or by contacting City Engineering at 608-266-4620

Publ. WSJ 8/17/12, 8/24/12, 8/31/12

SECTION B: INSTRUCTIONS TO BIDDERS

The City of Madison Standard Specifications for Public Works Construction - 2012 Edition, as supplemented and amended from time to time, forms a part of these contract documents as if attached hereto.

These standard specifications are available on the City of Madison Public Works website at www.cityofmadison.com/Business/PW/specs.cfm or by contacting City Engineering Division, Room 115, City-County Building, 210 Martin Luther King Jr. Blvd., Madison, WI 53703.

The Contractor shall review these Specifications prior to preparation of proposals for the work to be done under this contract, with specific attention to Article 102 "**BIDDING REQUIREMENTS AND CONDITIONS**" and Article 103 "**AWARD AND EXECUTION OF THE CONTRACT.**" For the convenience of the bidder, below are highlights of three subsections of the specifications.

Section 102.1: Pre-Qualification of Bidders

In accordance with Wisconsin State Statutes 66.0901 (2) and (3), all bidders must submit to the Board of Public Works proof of responsibility on forms furnished by the City. The City requires that all bidders be qualified on a biennial basis.

Bidders must present satisfactory evidence that they have been regularly engaged in the type of work specified herein and they are fully prepared with necessary capital, materials, machinery and supervisory personnel to conduct the work to be contracted for to the satisfaction of the City. All bidders must be pre-qualified by the Board of Public Works for the type of construction on which they are bidding prior to the opening of the bid.

In accordance with Section 39.02(9)(a)1. of the Madison General Ordinances, all bidders shall submit in writing to the Affirmative Action Division Manager of the City of Madison, a Certificate of Compliance or an Affirmative Action Plan at the same time or prior to the submission of the proof of responsibility forms. The bidder shall be disqualified if the bidder fails to or refuses to, prior to opening of the bid, submit a Certificate of compliance, Affirmative Action Plan or Affirmative Action Data Update, as applicable, as defined by Section 39.02 of the Madison General Ordinances (entitled Affirmative Action) and as required by Section 102.11 of the Standard Specifications.

Section 102.4: Proposals

No bid will be accepted that does not contain an adequate or reasonable price for each and every item named in the Schedule of Unit Prices.

A lump sum bid for the work in accordance with the plans and specifications is required. The lump sum bid must be the same as the total amounts bid for the various items and it shall be inserted in the space provided.

All papers bound with or attached to the proposal form are considered a part thereof and must not be detached or altered when the proposal is submitted. The plans, specifications and other documents designated in the proposal form will be considered a part of the proposal whether attached or not.

A proposal submitted by an individual shall be signed by the bidder or by a duly authorized agent. A proposal submitted by a partnership shall be signed by a member/partner or by a duly authorized agent thereof. A proposal submitted by a corporation shall be signed by an authorized officer or duly authorized registered agent of such corporation, and the proposal shall show the name of the State under the laws of

which such corporation was chartered. The required signatures shall in all cases appear in the space provided therefore on the proposal.

Each proposal shall be placed, together with the proposal guaranty, in a sealed envelope, so marked as to indicate name of project, the contract number or option to which it applies, and the name and address of the Contractor. Proposals will be received at the place and until the hour on the date designated in the advertisement. When sent by mail, the sealed proposal marked as indicated above shall be enclosed in an additional envelope. Proposals sent by mail, submitted in person or otherwise delivered must be in the hands of the official conducting the letting by the hour on the date designated in the advertisement. Proposals received after the date designated will be returned to the bidder unopened.

The Bidder shall execute form ERD-7777 (R.9/03), a part of these proposal pages and submit same with the bidder's proposal, if applicable. REFER TO PROPOSAL SECTION.

Section 102.5: Bid Deposit (Proposal Guaranty)

No proposal shall be considered unless either (i) it is accompanied by a bid deposit of the character and amount described in the Advertisement for Bids or (ii) a biennial bid bond in an amount and form acceptable to the City of Madison has been previously submitted.

Bid deposits of unsuccessful bidders shall be returned following the award of the contract by the Common Council. Bid deposit of the successful bidders shall be returned within forty-eight (48) hours following execution of the contract and bond as required.

Bidders for this Contract(s) must be Pre-Qualified for at least one of the following type(s) of construction denoted by an

Building Demolition

- 101 Asbestos Removal
- 120 House Mover

- 110 Building Demolition

Street, Utility and Site Construction

- 201 Asphalt Paving
- 205 Blasting
- 210 Boring/Pipe Jacking
- 215 Concrete Paving
- 220 Con. Sidewalk/Curb & Gutter/Misc. Concrete Work
- 221 Concrete Bases and Other Concrete Work
- 225 Dredging
- 230 Fencing
- 235 Fiber Optic Cable/Conduit Installation
- 240 Grading and Earthwork
- 242 Infrared Seamless Patching
- 245 Landscaping, Maintenance
- 250 Landscaping, Site and Street
- 251 Parking Ramp Maintenance
- 255 Pavement Sealcoating and Crack Sealing
- 260 Petroleum Above/Below Ground Storage Tank Removal/Installation

- 265 Retaining Walls, Precast Modular Units
- 270 Retaining Walls, Reinforced concrete
- 275 Sanitary, Storm Sewer & Water Main Const.
- 280 Sewer Lateral Drain Cleaning/Internal TV Insp.
- 285 Sewer Lining
- 290 Sewer Pipe Bursting
- 295 Soil Borings
- 300 Soil Nailing
- 305 Storm & Sanitary Sewer Laterals & Water Svc.
- 310 Street Construction
- 315 Street Lighting
- 318 Tennis Court Resurfacing
- 330 Traffic Control During Construction
- 320 Traffic Signals
- 325 Traffic Signing & Marking
- 335 Trucking
- 399 Other _____

Bridge Construction

- 501 Bridge Construction and/or Repair

Building Construction

- 401 Floor Covering (including carpet, ceramic tile installation, rubber, VCT)
- 402 Building Automation Systems
- 403 Concrete
- 404 Doors and Windows
- 405 Electrical - Power, Lighting & Communications
- 410 Elevator - Lifts
- 412 Fire Suppression
- 413 Furnishings - Furniture and Window Treatments
- 415 General Building Construction, Equal or Less than \$250,000
- 420 General Building Construction, \$250,000 to \$1,500,000
- 425 General Building Construction, Over \$1,500,000
- 428 Glass and/or Glazing
- 429 Hazardous Material Removal
- 430 Heating, Ventilating and Air Conditioning (HVAC)
- 433 Insulation - Thermal

- 435 Masonry
- 437 Metals
- 440 Painting and Wallcovering
- 445 Plumbing
- 450 Pump Repair
- 455 Pump Systems
- 460 Roofing and Moisture Protection
- 461 Solar Photovoltaic/Hot Water Systems
- 465 Soil/Groundwater Remediation
- 466 Warning Sirens
- 470 Water Supply Elevated Tanks
- 475 Water Supply Wells
- 480 Wood, Plastics & Composites-Structural & Architectural
- 499 Other _____

State of Wisconsin Certifications

- 1 Class 5 Blaster - Blasting Operations and Activities 2500 feet and closer to inhabited buildings for quarries, open pits and road cuts.
- 2 Class 6 Blaster - Blasting Operations and Activities 2500 feet and closer to inhabited buildings for trenches, site excavations, basements, underwater demolition, underground excavations, or structures 15 feet or less in height.
- 3 Class 7 Blaster - Blasting Operations and Activities for structures greater than 15 ' in height, bridges, towers, and any of the objects or purposes listed as "Class 5 Blaster or Class 6 Blaster".
- 4 Petroleum Above/Below Ground Storage Tank Removal and Installation (Attach copies of State Certifications.)
- 5 Hazardous Material Removal (Contractor to be certified for asbestos and lead abatement per the Wisconsin Department of Health Services, Asbestos and Lead Section (A&LS).) See the following link for application:
<http://www.dhs.wisconsin.gov/Asbestos/Cert/Index.htm>. State of Wisconsin Performance of Asbestos Abatement Certificate must be attached.
- 6 Other _____

SECTION C: SBE

Instructions to Bidders City of Madison SBE Program Information

2 Small Business Enterprise (SBE) Program Information

2.1 Policy and Goal

The City of Madison reaffirms its policy of nondiscrimination in the conduct of City business by maintaining a procurement process which remains open to all who have the potential and ability to sell goods and services to the City. It is the policy of the City of Madison to allow Small Business Enterprises (SBE) maximum feasible opportunity to participate in City of Madison contracting. The bidder acknowledges that its bid has been submitted in accordance with the SBE program and is for the public's protection and welfare.

Please refer to the "ADVERTISEMENT FOR BIDS" for the goal for the utilization of SBEs on this project. SBEs may participate as subcontractors, vendors and/or suppliers, which provide a commercially useful function. The dollar value for SBE suppliers or 'materials only' vendors shall be discounted to 60% for purposes of meeting SBE goals.

A bidder which achieves or exceeds the SBE goal will be in compliance with the SBE requirements of this project. In the event that the bidder is unable to achieve the SBE goal, the bidder must demonstrate that a good faith effort to do so was made. Failure to either achieve the goal or demonstrate a good faith effort to do so will be grounds for the bidder being deemed a non-responsible contractor ineligible for award of this contract.

A bidder may count towards its attainment of the SBE goal only those expenditures to SBEs that perform a commercially useful function. For purposes of evaluating a bidder's responsiveness to the attainment of the SBE goal, the contract participation by an SBE is based on the percentage of the total base bid proposed by the Contractor. The total base bid price is inclusive of all addenda.

Work performed by an SBE firm in a particular transaction can be counted toward the goal only if it involves a commercially useful function. That is, in light of industry practices and other relevant considerations, does the SBE firm have a necessary and useful role in the transaction, of a kind for which there is a market outside the context of the SBE Program, or is the firm's role a superfluous step added in an attempt to obtain credit towards goals? If, in the judgment of the Affirmative Action Division, the SBE firm will not perform a commercially useful function in the transaction, no credit towards goals will be awarded.

The question of whether a firm is performing a commercially useful function is completely separate from the question of whether the firm is an eligible SBE. A firm is eligible if it meets the definitional criteria and ownership and control requirements, as set forth in the City of Madison's SBE Program.

If the City of Madison determines that the SBE firm is performing a commercially useful function, then the City of Madison must then decide what that function is. If the

commercially useful function is that of an SBE vendor / supplier that regularly transacts business with the respective product, then the City of Madison will count 60% of the value of the product supplied toward SBE goals.

To be counted, the SBE vendor / supplier must be engaged in selling the product in question to the public. This is important in distinguishing an SBE vendor / supplier, which has a regular trade with a variety of customers, from a firm which performs supplier-like functions on an ad hoc basis or for only one or two contractors with whom it has a special relationship.

A supplier of bulk goods may qualify as an eligible SBE vendor / supplier if it either maintains an inventory or owns or operates distribution equipment. With respect to the distribution equipment; e.g., a fleet of trucks, the term "operates" is intended to cover a situation in which the supplier leases the equipment on a regular basis for its entire business. It is not intended to cover a situation in which the firm simply provides drivers for trucks owned or leased by another party; e.g., a prime contractor, or leases such a party's trucks on an ad hoc basis for a specific job.

If the commercially useful function being performed is not that of a qualified SBE vendor / supplier, but rather that of delivery of products, obtaining bonding or insurance, procurement of personnel, acting as a broker or manufacturer's representative in the procurement of supplies, facilities, or materials, etc., only the fees or commissions will apply towards the goal.

For example, a business that simply transfers title of a product from manufacturer to ultimate purchaser; e. g., a sales representative who re-invoices a steel product from the steel company to the Contractor, or a firm that puts a product into a container for delivery would not be considered a qualified SBE vendor / supplier. The Contractor would not receive credit based on a percentage of the cost of the product for working with such firms.

Concerning the use of services that help the Contractor obtain needed supplies, personnel, materials or equipment to perform a contract: only the fee received by the service provider will be counted toward the goal. For example, use of a SBE sales representative or distributor for a steel company, if performing a commercially useful function at all, would entitle the Contractor receiving the steel to count only the fee paid to the representative or distributor toward the goal. This provision would also govern fees for professional and other services obtained expressly and solely to perform work relating to a specific contract.

Concerning transportation or delivery services: if an SBE trucking company picks up a product from a manufacturer or a qualified vendor / supplier and delivers the product to the Contractor, the commercially useful function it is performing is not that of a supplier, but simply that of a transporter of goods. Unless the trucking company is itself the manufacturer or a qualified vendor / supplier in the product, credit cannot be given based on a percentage of the cost of the product. Rather, credit would be allowed for the cost of the transportation service.

The City is aware that the rule's language does not explicitly mention every kind of business that may contribute work on this project. In administering these programs, the City would, on a case-by-case basis, determine the appropriate counting formula to apply in a particular situation.

2.2 Contract Compliance

Questions concerning the SBE Program shall be directed to the Contract Compliance Officer of the City of Madison Department of Civil Rights, Affirmative Action Division, 210 Martin Luther King, Jr. Blvd., Room 523, Madison, WI 53703; telephone (608) 266-4910.

2.3 Certification of SBE by City of Madison

The Affirmative Action Division maintains a directory of SBEs which are currently certified as such by the City of Madison. Contact the Contract Compliance Officer as indicated in Section 2.2 to receive a copy of the SBE Directory or you may access the SBE Directory online at www.cityofmadison.com/dcr/aaTBDDir.cfm.

All contractors, subcontractors, vendors and suppliers seeking SBE status must complete and submit the **Targeted Business Certification Application** to the City of Madison Affirmative Action Division by the time and date established for receipt of bids. A copy of the Targeted Business Certification Application is available by contacting the Contract Compliance Officer at the address and telephone indicated in Section 2.2 or you may access the Targeted Business Certification Application online at www.cityofmadison.com/dcr/aaTBDDir.cfm. Submittal of the Targeted Business Certification Application by the time specified does not guarantee that the applicant will be certified as a SBE eligible to be utilized towards meeting the SBE goal for this project.

2.4 Small Business Enterprise Compliance Report

2.4.1 Good Faith Efforts

Bidders shall take all necessary affirmative steps to assure that SBEs are utilized when possible and that the established SBE goal for this project is achieved. A contractor who self performs a portion of the work, and is pre-qualified to perform that category of work, may subcontract that portion of the work, but shall not be required to do so. When a bidder is unable to achieve the established SBE goal, the bidder must demonstrate that a good faith effort to do so was made. Such a good faith effort should include the following:

- 2.4.1.1 Attendance at the pre-bid meeting.
- 2.4.1.2 Using the City of Madison's directory of certified SBEs to identify SBEs from which to solicit bids.
- 2.4.1.3 Assuring that SBEs are solicited whenever they are potential sources.
- 2.4.1.4 Referring prospective SBEs to the City of Madison Affirmative Action Division for certification.
- 2.4.1.5 Dividing total project requirements into smaller tasks and/or quantities, where economically feasible, to permit maximum feasible SBE participation.
- 2.4.1.6 Establishing delivery schedules, where requirements permit, which will encourage participation by SBEs.
- 2.4.1.7 Providing SBEs with specific information regarding the work to be performed.
- 2.4.1.8 Contacting SBEs in advance of the deadline to allow such businesses sufficient time to prepare a bid.

- 2.4.1.9 Utilizing the bid of a qualified and competent SBE when the bid of such a business is deemed reasonable (i.e. 5% above the lowest bidder), although not necessarily low.
- 2.4.1.10 Contacting SBEs which submit a bid, to inquire about the details of the bid and confirm that the scope of the work was interpreted as intended.

2.4.2 Reporting SBE Utilization and Good Faith Efforts

The Small Business Enterprise Compliance Report is to be submitted by the bidder in a separate sealed envelope marked: **“ENVELOPE 2 - SBE COMPLIANCE REPORT.”** This report is due by the specified bid closing time and date. Bids submitted without a completed SBE Compliance Report as outlined below shall be deemed non-responsible and the bidder ineligible for award of this contract.

- 2.4.2.1 If the Bidder meets or exceeds the goal established for SBE utilization, the Small Business Enterprise Compliance Report shall consist of the following:

- 2.4.2.1.1 **Cover Page**, Page C-7; and
- 2.4.2.1.2 **Summary Sheet**, C-8.

- 2.4.2.2 If the bidder does not meet the goal established for SBE utilization, the Small Business Enterprise Compliance Report shall consist of the following:

- 2.4.2.2.1 **Cover Page**, Page C-7;
- 2.4.2.2.2 **Summary Sheet**, C-8; and
- 2.4.2.2.3 **SBE Contact Report**, C-9 and C-10. (A separate Contact Report must be completed for each applicable SBE which is not utilized.)

2.5 Appeal Procedure

A bidder which does not achieve the established goal and is deemed non-responsible for failure to demonstrate a good faith effort to achieve such goal and subsequently denied eligibility for award of contract may, within 72 hours of receiving such notification, appeal that decision to a special appeals committee composed of three (3) members of the Affirmative Action Commission, three (3) members of the Board of Public Works and a seventh member appointed by the Mayor. All appeals must be made in writing to the City Engineer and received within 72 hours of City of Madison’s notice. Postmark not applicable.

2.6 SBE Requirements After Award of the Contract

The successful bidder shall identify SBE subcontractors, suppliers and vendors on the subcontractor list in accordance with the specifications. The Contractor shall submit a detailed explanation of any variances between the listing of SBE subcontractors, vendors and/or suppliers on the subcontractor list and the Contractor’s SBE Compliance Report for SBE participation.

No change in SBE subcontractors, vendors and/or suppliers from those SBEs indicated in the SBE Compliance Report will be allowed without prior approval from the Engineer and the Affirmative Action Division. The contractor shall submit in writing to the City of Madison Affirmative Action Division a request to change any SBE citing specific reasons which necessitate such a change. The Affirmative Action Division will use a general test of reasonableness in approving or rejecting the contractor's request for change. If the request is approved, the Contractor will make every effort to utilize another SBE if available.

The City will monitor the project to ensure that the actual percentage commitment to SBE firms is carried out.

2.7 SBE Definition and Eligibility Guidelines

A Small Business Enterprise is a business concern awarded certification by the City of Madison. For the purposes of this program a Small Business Enterprise is defined as:

- A. An independent business operated under a single management. The business may not be a subsidiary of any other business and the stock or ownership may not be held by any individual or any business operating in the same or a similar field. In determining whether an entity qualifies as a SBE, the City shall consider all factors relevant to being an independent business including, but not limited to, the date the business was established, adequacy of its resources for the work in which it proposes to involve itself, the degree to which financial, equipment leasing and other relationships exist with other ineligible firms in the same or similar lines of work. SBE owner(s) shall enjoy the customary incidents of ownership and shall share in the risks and profits commensurate with their enjoyment interests, as demonstrated by an examination of the substance rather than form or arrangements that may be reflected in its ownership documents.
- B. A business with annual gross receipts of less than \$750,000 when averaged over the past three year period;

Firm and/or individuals that submit fraudulent documents/testimony may be barred from doing business with the City and/or forfeit existing contracts.

SBE certification is valid for one (1) year unless revoked.

**TENNEY PARK MAINTENANCE BRIDGE
CONTRACT NO. 6656**

Small Business Enterprise Compliance Report

Cover Sheet

**This information MUST be submitted in a separate sealed envelope marked
“ENVELOPE NO. 2 - SBE COMPLIANCE REPORT.”**

Prime Bidder Information:

Company: _____

Address: _____

Telephone Number: _____ Fax Number: _____

Contact Person/Title: _____

Prime Bidder Certification:

I, _____, _____ of
Name Title

_____ certify that the information
Company

contained in this SBE Compliance Report is true and correct to the best of my knowledge and belief.

Witness' Signature

Bidder's Signature

Date

**TENNEY PARK MAINTENANCE BRIDGE
CONTRACT NO. 6656**

Small Business Enterprise Compliance Report

Summary Sheet

**This information MUST be submitted in a separate sealed envelope marked
"ENVELOPE NO. 2 - SBE COMPLIANCE REPORT."**

SBE SUBCONTRACTORS WHO ARE NOT SUPPLIERS

Name(s) of SBEs Utilized	Type of Work	% of Total Bid Amount

Subtotal SBE who are not suppliers: _____ %

SBE SUBCONTRACTORS WHO ARE SUPPLIERS

Name(s) of SBEs Utilized	Type of Work	% of Total Bid Amount

Subtotal Contractors who are suppliers: _____ % x 0.6 = _____ % (discounted to 60%)

Total Percentage of SBE Utilization: _____ %.

**TENNEY PARK MAINTENANCE BRIDGE
CONTRACT NO. 6656**

Small Business Enterprise Compliance Report

SBE Contact Report

**This information MUST be submitted in a separate sealed envelope marked
“ENVELOPE NO. 2 - SBE COMPLIANCE REPORT.”**

Submit separate copy of this form for each SBE which you are not able to utilize towards meeting the SBE goal for this project. Attach separate sheets if necessary.

SBE Information:

Company: _____

Address: _____

Telephone Number: _____

Contact Person/Title: _____

1. Outline below all efforts to solicit a bid from the above SBE. Include date, means of contact, who from your company made this contact and the result.

2. Describe the information provided to the aforementioned SBE regarding the scope of work for which he/she was to provide a bid.

Is this the same scope of work on which the subcontractor you intend to utilize based his/her bid?

Yes No

3. Did this SBE submit a bid? Yes No

4. Is the General Contractor pre-qualified to self-perform this category of work?

Yes No

5. If you responded "Yes" to Question 3, please check the items below which apply and provide the requested detail. If you responded "No" to Question 3, please skip ahead to item 6 below.

The SBE listed above is unavailable for work on this project for the following reasons. Provide specific detail for this conclusion.

The SBE listed above is unqualified for work on this project. Provide specific details for this conclusion.

The SBE listed above provided a price that was unreasonable (i.e. more than 5% above the lowest bidder). Provide specific detail for this conclusion including the SBE's price and the price of the subcontractor you intend to utilize.

A contract with the SBE listed above may constitute a breach of the bidder's collective bargaining agreements. Provide specific detail for this conclusion including, but not limited to, correspondence from the SBE indicating it will not sign a project labor agreement and/or correspondence from the applicable trade union indicating a project labor agreement will not be allowed at the time of project bidding.

Other; please specify reason(s) other than listed above which made it impossible for you to utilize this SBE on this project.

6. Describe any other good faith efforts:

SECTION D: SPECIAL PROVISIONS

**TENNEY PARK MAINTENANCE BRIDGE
CONTRACT NO. 6656**

It is the intent of these Special Provisions to set forth the final contractual intent as to the matter involved and shall prevail over the Standard Specifications and plans whenever in conflict therewith. In order that comparisons between the Special Provisions can be readily made, the numbering system for the Special Provisions is equivalent to that of the Specifications.

Whenever in these Specifications the term "Standard Specifications" appears, it shall be taken to refer to the City of Madison Standard Specifications for Public Works Construction and Supplements thereto.

SECTION 102.10: MINIMUM RATE OF WAGE SCALE

For this project, payment of prevailing wages (white sheet) is not required if either: a single trade accounts for 85% or more of the total labor costs of the project and the bid is less than \$48,000; or no single trade accounts for 85% or more of the total labor costs of the project and the bid is less than \$100,000. For bids not meeting either of these conditions, prevailing wages shall be required.

If required, the wages and benefits paid on the contract shall not be less than those specified in the Prevailing Wage Determination included with these contract documents for the following types of work:

- Building and Heavy Construction
- Sewer, Water, and Tunnel Construction
- Local Street and Miscellaneous Paving Operations
- Residential and Agricultural Construction

All bidders are notified that all labor employed on City contracts must be paid in accordance with the minimum rate of wage scale included in the Contract Documents.

For the information of the employees working on the project, a copy of the wage scale included in the contract documents and the provisions of Section 66.0903(8) of the Wisconsin Statutes shall be kept posted by the employer and in at least one conspicuous and easily accessible place at the site of the project.

The Contractor shall keep weekly payroll records setting forth the name, address, telephone number, classification, wage rate and fringe benefit package of each employee who worked on such City project and all other projects the employee worked in the same period, and the Contractor must keep records of the individual time each employee worked on the project and for each day of the project. Such records shall also set forth the total number of hours of overtime credited to each such employee for each day and week and the amount of overtime pay received in that week. Such records shall, in addition, set forth the full weekly wages earned by each such employee and the actual hourly wage paid to that employee. The Contractor shall submit payroll records to the Engineer every week for those periods when work is being done on the project. Said submittal shall be within twenty-one (21) calendar days of the end of the Contractor's weekly pay period.

The Contractor shall ensure that employees shall be paid unconditionally and shall receive the full amounts accrued at the time of payment, computed at rates not less than those stated in the City of Madison "Minimum Rate of Wage Scale" and that each employee's rate shall be determined by the work that is done within the trade or occupation classification which should be properly assigned to such employee. Questions regarding an employee's classification or rate of pay within that classification, shall be resolved by the practice that predominates in the industry and on which the trade or occupation rate/classification is based. Therefore, rate of pay, classification and work jurisdiction disputes shall be resolved by relying upon practices established by collective bargaining agreements and guidelines used in such determinations by appropriate recognized trade unions operating within the City of Madison.

The Contractor shall agree that the normal rate of wage paid to the Contractor's employees on other projects shall not be reduced or otherwise diminished as a result of the requirement to pay no less than the minimum rate of wage

scale on a City project. Mulcting of employees on City projects by contractors, such as by kickbacks or other such devices, is prohibited.

These contract provisions shall apply to all work performed on the contract by the Contractor with its own organization and with assistance of laborers under its immediate superintendency and to all work performed by piecework or by subcontract. No laborer, worker, or mechanic shall be employed directly upon the site of the work except on a wage basis, but this shall not be construed to prohibit the rental of equipment from individuals.

In the event of a refusal by the Contractor to submit payroll records as required by the contract, the City of Madison shall have the option to cancel this contract and request the Surety to perform or to relet the balance of the work for bids, and in that event, to charge the Contractor for any loss which the City may incur thereby.

SECTION 102.12: BEST VALUE CONTRACTING

This Contract shall be considered a Best Value Contract if the Contractor's bid is equal to or greater than \$51,500 for a single trade contract; or equal to or greater than \$251,000 for a multi-trade contract pursuant to MGO 33.07(7).

ARTICLE 102.3 EQUAL BENEFITS REQUIREMENT (SEC. 39.07, MGO)

This provision applies to contracts executed by the City on July 1, 2012 or later, unless exempt by Sec. 39.07 of the Madison General Ordinances (MGO).

For the duration of this Contract, the Contractor agrees to offer and provide benefits to employees with domestic partners that are equal to the benefits offered and provided to married employees with spouses, and to comply with all provisions of Sec. 39.07, MGO. If a benefit would be available to the spouse of a married employee, or to the employee based on his or her status as a spouse, the benefit shall also be made available to a domestic partner of an employee, or to the employee based on his or her status as a domestic partner. "Benefits" include any plan, program or policy provided or offered to employees as part of the employer's total compensation package, including but not limited to, bereavement leave, family medical leave, sick leave, health insurance or other health benefits, dental insurance or other dental benefits, disability insurance, life insurance, membership or membership discounts, moving expenses, pension and retirement benefits, and travel benefits.

Cash Equivalent. If after making a reasonable effort to provide an equal benefit for a domestic partner of an employee, the Contractor is unable to provide the benefit, the Contractor shall provide the employee with the cash equivalent of the benefit.

Proof of Domestic Partner Status. The Contractor may require an employee to provide proof of domestic partnership status as a prerequisite to providing the equal benefits. Any such requirement of proof shall comply with Sec. 39.07(4), MGO.

Notice Posting, Compliance. The Contractor shall post a notice informing all employees of the equal benefit requirements of this Contract, the complaint procedure, and agrees to produce records upon request of the City, as required by Sec. 39.07, MGO.

Subcontractors. Contractor shall require all subcontractors, the value of whose work exceeds the single-trade minimum set forth in Sec 33.07(7)(b)5., MGO, to provide equal benefits in compliance with Sec. 39.07, MGO.

See Section 39.07 MGO for exemptions from this requirement. Exemptions from this requirement include a Contractor whose employees are under a collective bargaining agreement that was in effect prior to July 1, 2012, however, the Contractor must agree to propose to the applicable collective bargaining unit(s) that an equal benefit requirement consistent with this ordinance be incorporated into the next collective bargaining agreement or in the existing agreement upon amendment, extension or other modification that occurs after July 1, 2012.

SECTION 104 **SCOPE OF WORK**

This project consists of the removal and replacement of a bridge at Tenney Park including but not limited to the following:

- Demolition of the existing bridge.....
- Construction of the new bridge.....
- Placement/maintenance and removal of Bid Item #10701 Traffic Control....
- Restoration around abutments and where needed on shoreline.....

The Contractor shall view the site prior to bidding to become familiar with the existing conditions. It will be the responsibility of the Contractor to work with the utilities located and to resolve conflicts during the construction process.

Bridge questions should be directed to:

Tom Zalewski PE, SE
Bloom Companies, LLC
608-515-3525 (cell); 608-819-8511 (office)

Site questions should be directed to:

Thomas J. Maglio
City of Madison Parks Division
608-576-9673 (cell); 608-266-6518 (office)

ARTICLE 104.4 **INCREASE OR DECREASE QUANTITIES**

Any overruns shall be paid for under the appropriate bid item(s) without any penalty or change to the bid price for the associated bid item. The Contractor shall not be reimbursed for any deletions to the contract. No change to the unit bid price will be allowed for changes to the quantities.

Contractor to note, part or all of the quantity listed for the bid items that relate to the asphalt approach on the north side of the bridge may be eliminated from the contract depending on coordination with the Thornton Ave. reconstruction project.

SECTION 105.1: **AUTHORITY OF THE ENGINEER**

The Engineer shall resolve all questions which arise as to the quality and acceptability of materials furnished, work performed, manner of performance, rate of progress of the work, interpretation of the plans and Specifications, acceptable fulfillment of the contract, compensation, and disputes and mutual rights between Contractors under the Specifications. The Engineer shall determine the amount and quantity of work performed and materials furnished.

All decisions of the Engineer shall, when so requested, be rendered in writing. They shall be final and conclusive in all matters unless within ten (10) days after such decision the Contractor applies in writing to the Board of Public Works for a review of such decision.

Any change proposed by a Contractor in SBE subcontractors, vendors or suppliers from those SBEs indicated on the SBE Compliance Report must be approved by the Engineer and the City's Manager of the Affirmative Action Division (hereafter, AAD). When requested, such decision shall be rendered in writing. Such decisions shall be final and conclusive in all matters unless within ten (10) days after such decision the Contractor or the affected SBE applies in writing to the Board of Public Works for a review of such decision.

In the event the Engineer and the AAD disagree over the proper decision to be made regarding an SBE, the Mayor shall appoint a third person to resolve the disagreement, within 30 days of appointment. The decision thus rendered may be reviewed by the Board of Public Works upon request of the Contractor or the affected SBE as set forth in Sections 105.1 and 105.2 of the City's standard specifications.

SECTION 105.9 SURVEYS, POINTS, AND INSTRUCTION

The City of Madison Parks Division will be responsible for setting all lines and/or grades required to complete the work for the Tenney Park Bridge Reconstruction project. Any questions regarding the layout/staking of this project should be directed to Dan Rodman at 266-6674.

SECTION 105.12 COOPERATION OF THE CONTRACTOR

The Contractor shall perform a One Call through Digger's Hotline at least three days prior to beginning construction.

The City Engineering Division will be working on the reconstruction of Thornton Ave. during the spring of 2013, at the same time as this contract. The GC for this project will be required to work with the GC for the Thornton Ave. project to assure completion of both contracts on time and to assure that Thornton Ave. is kept open to the shelter at all times.

Contractor to note, part or all of the quantity listed for the bid items that relate to the asphalt approach on the north side of the bridge may be eliminated from the contract depending on coordination with the Thornton Ave. reconstruction project.

The Contractor will be allowed to store equipment and materials on site as shown on the drawings, with the exact location to be determined at the pre construction meeting. The Contractor shall secure materials at the end of each work day to deter any potential vandalism and theft. The Contractor is responsible for securing all equipment and materials at the end of each work day.

The contractor should note that the Tenney Park Shelter/Skating facility typically opens up the week before the December holiday break, around December 17th, 2012, and lasts until the end of February. There could also be reservations at the shelter through the remainder of the contract. Access to the shelter from Thornton Ave. must be open at all times. The contractor should also note that for this project the Parks Division will NOT be able to lower the water elevation as an assisting factor for the project. Water elevation will remain around 847.0 - the typical elevation set for the winter skating season.

SECTION 105.13 ORDER OF COMPLETION

The order of doing the work is subject to the review of the City. Prior to beginning construction, the Contractor shall submit to the City a detailed construction schedule showing the sequence and anticipated dates of all construction operations, as well as a Staging/Phasing Plan for approval by the City. The sequence of scheduled operations may be modified by the City to accommodate specific needs.

SECTION 107.14 WEAPONS PROHIBITION

Contractor shall prohibit, and shall require its subcontractors to prohibit, its employees from carrying weapons, including concealed weapons, in the course of performance of work under this Contract, other than while at the Contractor's or subcontractor's own business premises. This requirement shall apply to vehicles used at any City work site and vehicles used to perform any work under this Contract, except vehicles that are an employee's "own motor vehicle" pursuant to Wis. Stat. sec. 175.60(15m).

SECTION 108.2: PERMITS

The following permits have been applied for:

1. Army Corps of Engineers Permit
2. WI-DNR Chapter 30 Permit
Chapter 30 permit has been applied for and will be available prior to the start of this project. No work will be done on this project prior to the arrival of this permit.
3. City of Madison Erosion Control Permit – by City

A WI-DNR WRAPP (formerly Notice of Intent – NOI) Stormwater Discharges Associated with Land Disturbing Construction Activities Permit is not required for this project because land disturbance is < 1 Acre.

It shall be the responsibility of the Contractor to obtain the permits listed below, if required, and to pay all applicable charges and fees associated with these permits.

- Wisconsin DNR Dewatering
- Wisconsin DNR Pollutant Discharge Elimination System for Pit/Trench Dewatering

All permit costs shall be considered incidental to the Mobilization bid item for this Contract.

The Contractor shall meet the conditions of all permits and must keep a copy of each individual permit on site at all times throughout construction.

With regard to Control of Invasive or Exotic Species, the Chapter 30 permit will stipulate that any equipment or materials that may be in contact with invasive or exotic species must be decontaminated prior to and after work at the project site. It shall be the Contractor's responsibility to comply with decontamination requirements.

The Contractor shall meet the conditions of the permits involving including properly installing and maintaining the erosion control measures shown on the plans, specified in these Special Provisions, or as directed by the Construction Engineer or his designees. This work will be paid for under the appropriate bid items, or if appropriate items are not included in the contract, they shall be paid for as Extra Work.

The City's obtaining these permits is not intended to be exhaustive of all permits that may be required to be obtained by the Contractor for construction of this project. It shall be the responsibility of the Contractor to identify and obtain any other permits needed for construction.

SECTION 109.2: PROSECUTION OF THE WORK

Construction work must begin within seven (7) calendar days after the date appearing on the mailed notice to do so that was sent to the Contractor. Construction work shall be carried on at a rate so as to secure full completion within the contract times outlined in Section 109.7, the rate of progress and the time of completion being essential conditions of this Agreement.

The fixed, agreed upon, liquidated damages for failure to complete all work within the contract, unless otherwise specified in this section, shall be calculated in accordance with Article 109 of the Standard Specifications. The Contractor shall limit workdays from 7:00 am to 7:00 pm, unless approved by the Engineer in writing.

SECTION 109.7: TIME OF COMPLETION

Work cannot start on this contract until after the "Start to Work" letter has been received. Work on the Tenney Park Bridge Reconstruction project will start on or around 11/05/12 and must be completed by 05/24/2013. A pre-construction meeting will be required on-site prior to start of construction.

SECTION 109.9 LIQUIDATED DAMAGES

Should the contractor fail to complete the work within the time agreed upon in the contract, or within such extra time as may have been allowed by extensions, there shall be deducted from any monies due or that may become due the contractor, or in the event no monies are due, the contractor shall pay to the City, the sum set forth in the following schedule for each and every day that the work shall remain uncompleted. This sum be considered and treated not as a penalty but as fixed, agreed and liquidated damages due the City from the contractor by reason of inconvenience to the public, added cost of engineering and supervision, maintenance of detours and other items

which have caused an expenditure of public funds resulting from the contractor's failure to complete the work within the time specified in the contract.

The fixed, agreed and liquidated damages shall be assessed, unless otherwise specified, in accordance with the following schedule, which represents the city's estimate of damages at the time of contracting:

Original Contract Amount		Daily Charge	
From More than	To and Including	Calendar Day	Working Day
\$ 0	\$ 50,000	\$ 100.00	\$ 250.00
50,000	100,000	150.00	275.00
100,000	300,000	200.00	425.00
300,000	500,000	325.00	675.00
500,000	\$ 1,000,000	475.00	1,200.00
\$ 1,000,000	--	\$ 550.00	\$ 1,300.00

BID ITEM 10701 – TRAFFIC CONTROL

DESCRIPTION

This item shall include all necessary work, materials and equipment to install lane markers as shown on the site plan. Lane markers and bases are to be per WISDOT Detail # S.D.D. 15 C 11-5. Contractor will install, maintain for the duration for the project and remove at the end of the project.

METHOD OF MEASUREMENT

Traffic Control shall be paid as a lump sum for all work described above.

BASIS OF PAYMENT

Traffic control shall be measured as described above which shall be full payment for all work as described above.

BID ITEM 10911 – MOBILIZATION

DESCRIPTION

Work under this item shall include all costs associated with mobilization of the Contractor to the site. Parking of equipment and staging shall be allowed within project limits where shown on the plans.

METHOD OF MEASUREMENT

Mobilization shall be paid as a lump sum for all work described above.

BASIS OF PAYMENT

Mobilization shall be measured as described above which shall be full payment for all work as described above.

BID ITEM 20101 - EXCAVATION CUT

This bid item is for the removal and disposal of the asphalt surfaces at the north and south approaches of the new bridge only, as shown on the plans. All excavation cut for the new bridge should be included in the cost of and will be paid for as a part of Bid Item #90002 Excavation for Structure Bridges.

BID ITEM 20218 – 1 ½” CRUSHED STONE BASE COURSE

DESCRIPTION

Work under this bid item includes all materials, labor, trucking, spreading and fine grading needed to bring the north and south bridge approaches to finish gravel grade per the enclosed plans. The amount of 1 ½” crushed stone listed for Bid Item #20218 in the proposal page is an estimate only. The amount of stone to be imported to the site will be enough to build the temporary gravel path/ramp (if necessary), on the north side approach to the bridge and to bring the south side bridge approach up to proposed sub grade, allowing for 3” of new asphalt. Asphalt pavement is not a part of this contract. Payment will be based on the actual amount of 1 ½” stone used based on the load tickets.

METHOD OF MEASUREMENT

1 ½” Crushed Stone Base Course shall be measured by the ton in place.

BASIS OF PAYMENT

1 ½” Crushed Stone Base Course shall be paid at the contract price for work as described and measured above.

BID ITEM 90001 – REMOVING OLD STRUCTURE OVER WATERWAY STA 11+50.00

A. Description. The work shall consist of removing and disposing of the existing bridge.

Conform to Section 203 of the State of Wisconsin Standard Specifications for Highway and Structure Construction, 2013 Edition as modified in this special provision.

Add the following to standard spec 203:

203.3.6 Removals Over Waterways and Wetlands

203.3.6.1 Removing Old Structure Over Waterway

- (1) Remove the existing Tenney Park Pedestrian structure over the Tenney Park Lagoon conforming to the contractor's approved structure removal and clean-up plan. Remove all reinforcing steel, all concrete, and all other debris that falls into the waterway or wetland. Remove large pieces of the structure within 36 hours. The contractor may leave limited amounts of small concrete pieces scattered over the waterway floor or wetland only if the engineer allows.
- (2) Submit a structure removal and clean-up plan as part of the erosion control implementation plan required under standard spec 107.20. Do not start work under the structure removal and clean-up plan without the department's written approval of the plan. Include the following information in the structure removal and clean-up plan:
 1. Methods and schedule to remove the structure.
 2. Methods to control potentially harmful environmental impacts.
 3. Methods for removing abutments. Blasting is prohibited.
 4. Methods for cleaning the waterway or wetlands.
- (3) If stockpiling spoil material, place it on an upland site an adequate distance from the waterway, wetland, or any open water created by excavation. Install silt fence between the spoil pile and the waterway, wetland, or excavation site.

D. Method of Measurement. The City will measure the Removing Old Structure Over Waterway Sta 11+50.00 bid item as a single lump sum.

E. Basis of Payment. Removing Old Structure Over Waterway Sta 11+50.00 shall be paid for according to the contract lump sum price. Price bid shall include breaking down, removing, and disposing of the existing structure including all materials, equipment and labor for a complete removal as required.

BID ITEM 90002 – EXCAVATION FOR STRUCTURE BRIDGES

A. Description. The work shall consist of excavation for the proposed bridge as shown on the drawings.

B. Materials. Materials shall conform to Section 206 of the State of Wisconsin Standard Specifications for Highway and Structure Construction, 2013 Edition.

C. Construction Methods. The excavation for the proposed bridge shall be constructed as specified in Section 206 of the State of Wisconsin Standard Specifications for Highway and Structure Construction, 2013 Edition.

The front and sides of the abutments shall be backfilled with excavated material after the concrete has reached a compressive strength of 3000 psi or 7 days.

D. Method of Measurement. The City will measure the Excavation For Structure Bridges bid item as a single lump sum.

E. Basis of Payment. Excavation For Structure Bridges shall be paid for according to the contract lump sum price. Price bid shall include excavation of the bridge abutments, backfilling and compacting excavated material, and disposing of excess material as necessary including all materials, equipment and labor for a complete excavation installation as required.

BID ITEM 90003 – COFFERDAMS

A. Description. The work shall consist of providing and installing cofferdams and dewatering to facilitate new construction as shown on the drawings.

Work under this item shall also include permitting with the Wisconsin Department of Natural Resources (WDNR).

The Contractor shall be responsible for all work materials and equipment required to comply with WDNR permit conditions to dewater the site. Contractor shall be responsible for compliance with all laws and for obtaining required permits that may be required depending on the selected method of construction, including WDNR Dewatering (for installing dewatering points/wells with pumping rates greater than or equal to 70 gpm-aggregate total) and WPDES Permit for Pit/Trench Dewatering, (for discharges associated with dewatering system). Contractor shall be responsible for performing discharge sampling and reporting if required by WDNR Pit and Trench Dewatering permit, and for complying with the discharge limit for total suspended solids specified by the permit.

The Contractor shall provide all equipment and personnel necessary to conduct dewatering operations as required for the proper completion of the work. The contractor shall prepare a dewatering plan and submit it to the City Engineer and the WDNR for review and approval, prior to starting dewatering operations.

Dewatering activities shall comply with WDNR Technical Standard 1061 (available on the WDNR web site at www.dnr.state.wi.us/runoff/stormwater/techstds.htm). Should contractor's action or construction not be in compliance with applicable permits, Contractor shall remedy situation as directed by Engineer, and all costs associated with those actions shall be borne by Contractor.

The Contractor shall be solely responsible for choosing a method of water control that is compatible with the constraints defined. The Contractor shall be responsible for the adequacy of the water control system and shall take all necessary measures to insure that the water control operation will not endanger or damage any existing adjacent utility or structure.

The method or methods shall be designed, installed and operated in such a manner to provide satisfactory working conditions and to maintain the progress of work. The methods and systems shall be designed so as to avoid settlement or damage to adjacent property in accordance with the applicable legislative statutes and judicial decisions of the State of Wisconsin.

Review and approval of the dewatering plan does not relieve the contractor of the dewatering requirements stated in these specifications. The City of Madison assumes no liability for the performance or safety of the dewatering system.

A copy of all dewatering permits shall be filed with the City of Madison 48 hours prior to commencement of any dewatering.

B. Materials. Materials shall conform to Section 206 of the State of Wisconsin Standard Specifications for Highway and Structure Construction, 2013 Edition.

C. Construction Methods. The installation of cofferdams and subsequent dewatering shall be constructed as specified in Section 206 of the State of Wisconsin Standard Specifications for Highway and Structure Construction, 2013 Edition.

Water shall not be allowed in active construction areas during concrete pours or curing periods. No concrete or masonry shall be installed in water nor shall water be allowed to rise over masonry or concrete if there is danger of flotation or of setting up unequal pressures in the concrete until the concrete has set at least 24 hours and any danger of flotation has been removed.

Dewatering shall be done in a manner that assures safe working conditions and provides stable trench side slopes and trench bottom for adequate support concrete forms. The contractor shall dewater sufficiently to minimize or eliminated groundwater pressures below the proposed trench bottom which otherwise may tend to cause boiling or a "quick" condition at the trench bottom. Where silty sands or other impervious soils are encountered at and/or below the footing zone, the dewatering equipment must be adequate to relieve the groundwater pressure below the impervious soil layer and accomplish sufficient drainage of the impervious soils to provide a stable trench bottom.

Once the dewatering plan is approved the contractor shall notify the City Engineer at least three (3) days in advance of any proposed changes to his dewatering plan.

The contractor shall dispose of all water removed so as not to endanger public health, private and public property or completed work. Only electrically driven pumps shall be used for dewatering. The contractor shall provide sufficient mufflers or other noise reduction devices necessary to minimize the noise of the equipment. If ordered by the City Engineer, the contractor shall reduce noise to an acceptable level (as determined by the engineer) or supply an alternate system capable of meeting the noise requirements. This shall apply to any equipment utilized as part of the dewatering system.

The contractor shall provide stand-by equipment to maintain continuous dewatering in the event of mechanical breakdown to part of the system.

The Contractor shall be responsible for removal and/or abandonment of dewatering wells. Removal and/or abandonment shall conform to all state and local regulations. Contractor shall remove all construction dewatering materials from the site and properly disposed of.

D. Method of Measurement. The City will measure the cofferdams and dewatering bid item as a single lump sum.

E. Basis of Payment. Cofferdams and dewatering shall be paid for according to the contract lump sum price. Price bid shall include providing cofferdams, cribs, sheeting, shoring, bracing, pumping, and dewatering as necessary including all materials, equipment and labor for a complete installation as required. Work under this item shall also include permitting with the Wisconsin Department of Natural Resources (WDNR).

BID ITEM 90004 – BACKFILL STRUCTURE

- A. Description.** The work shall consist of providing structural backfill as shown on the drawings.
- B. Materials.** Materials shall conform to Section 210 of the State of Wisconsin Standard Specifications for Highway and Structure Construction, 2013 Edition.
- C. Construction Methods.** Backfill Structure shall be constructed as shown on the drawings and as specified in Section 210 of the State of Wisconsin Standard Specifications for Highway and Structure Construction, 2013 Edition.
- D. Method of Measurement.** The City will measure Backfill Structure by the cubic yard acceptably completed.
- E. Basis of Payment.** Backfill Structure shall be paid for according to the contract unit price. Price bid shall include materials, labor, and equipment necessary for a complete installation as shown and specified including providing, placing, and compacting the material.

BID ITEM 90005 – CONCRETE MASONRY BRIDGES

- A. Description.** The work shall consist of providing concrete for the bridge as shown on the drawings.
- B. Materials.** Concrete shall conform to Sections 501 and 502 of the State of Wisconsin Standard Specifications for Highway and Structure Construction, 2013 Edition. All concrete shall be Grade A, A-FA, A-S, A-T, A-IS, or A-IP.
- C. Construction Methods.** The concrete shall be constructed as shown on the drawings and as specified in Sections 501 and 502 of the State of Wisconsin Standard Specifications for Highway and Structure Construction, 2013 Edition.
- D. Method of Measurement.** The City will measure Concrete Masonry Bridges by the cubic yard acceptably completed. The City will not measure work or material for forms, falsework, or bracing or other incidentals necessary to complete the work as required in these specifications.
- E. Basis of Payment.** Concrete Masonry Bridges shall be paid for according to the contract unit price. Price bid shall include materials, labor, and equipment necessary for a complete installation as shown and specified including providing forms and falsework; for furnishing, placing, finishing, curing, and protecting concrete, and for measuring and evaluating concrete strength including fabricating and testing cylinders, and evaluating maturity.

BID ITEM 90006 – PROTECTIVE SURFACE TREATMENT

- A. Description.** The work shall consist of providing protective surface treatment for the bridge as shown on the drawings.
- B. Materials.** Protective Surface Treatment shall conform to Section 502 of the State of Wisconsin Standard Specifications for Highway and Structure Construction, 2013 Edition.
- C. Construction Methods.** Protective Surface Treatment shall be constructed as shown on the drawings and as specified in Section 502 of the State of Wisconsin Standard Specifications for Highway and Structure Construction, 2013 Edition.
- D. Method of Measurement.** The City will measure Protective Surface Treatment by the square yard acceptably completed.
- E. Basis of Payment.** Protective Surface Treatment shall be paid for according to the contract unit price. Price bid shall include materials, labor, and equipment necessary for a complete installation as shown and specified including providing and placing the treatment and surface preparation.

BID ITEM 90007 – BAR STEEL REINFORCEMENT HS BRIDGES

A. Description. The work shall consist of providing high strength bar steel reinforcement for the bridge as shown on the drawings.

B. Materials. High strength bar steel reinforcement shall conform to Section 505 of the State of Wisconsin Standard Specifications for Highway and Structure Construction, 2013 Edition.

C. Construction Methods. High strength bar steel reinforcement shall be constructed as shown on the drawings and as specified in Section 505 of the State of Wisconsin Standard Specifications for Highway and Structure Construction, 2013 Edition.

D. Method of Measurement. The City will measure Bar Steel Reinforcement HS Bridges reinforced concrete by the pound acceptably completed.

E. Basis of Payment. Bar Steel Reinforcement HS Bridges shall be paid for according to the contract unit price. Price bid shall include materials, labor, and equipment necessary for a complete installation as shown and specified including furnishing and placing reinforcing.

BID ITEM 90008 – BAR STEEL REINFORCEMENT HS COATED BRIDGES

A. Description. The work shall consist of providing epoxy coated high strength bar steel reinforcement for the bridge as shown on the drawings.

B. Materials. Epoxy coated high strength bar steel reinforcement shall conform to Section 505 of the State of Wisconsin Standard Specifications for Highway and Structure Construction, 2013 Edition.

C. Construction Methods. Epoxy coated high strength bar steel reinforcement shall be constructed as shown on the drawings and as specified in Section 505 of the State of Wisconsin Standard Specifications for Highway and Structure Construction, 2013 Edition.

D. Method of Measurement. The City will measure Bar Steel Reinforcement HS Coated Bridges reinforced concrete by the pound acceptably completed.

E. Basis of Payment. Bar Steel Reinforcement HS Coated Bridges shall be paid for according to the contract unit price. Price bid shall include materials, labor, and equipment necessary for a complete installation as shown and specified including furnishing and placing reinforcing.

BID ITEM 90009 – RUBBERIZED MEMBRANE WATERPROOFING

A. Description. The work shall consist of providing rubberized membrane waterproofing for the bridge as shown on the drawings.

B. Materials. Rubberized membrane waterproofing shall conform to Section 516 of the State of Wisconsin Standard Specifications for Highway and Structure Construction, 2013 Edition.

C. Construction Methods. Rubberized membrane waterproofing shall be constructed as shown on the drawings and as specified in Section 516 of the State of Wisconsin Standard Specifications for Highway and Structure Construction, 2013 Edition.

D. Method of Measurement. The City will measure Rubberized Membrane Waterproofing by the square yard acceptably completed.

E. Basis of Payment. Rubberized Membrane Waterproofing shall be paid for according to the contract unit price. Price bid shall include materials, labor, and equipment necessary for a complete installation as shown and specified including providing and placing the preformed membrane.

BID ITEM 90010 – STEEL PILING HP 12-INCH X 53 LB

- A. Description.** The work shall consist of providing Steel Piling HP 12-Inch X 53 LB for the bridge as shown on the drawings.
- B. Materials.** Steel Piling HP 12-Inch X 53 LB shall conform to Section 511 of the State of Wisconsin Standard Specifications for Highway and Structure Construction, 2013 Edition.
- C. Construction Methods.** Steel Piling HP 12-Inch X 53 LB shall be constructed as shown on the drawings and as specified in Section 511 of the State of Wisconsin Standard Specifications for Highway and Structure Construction, 2013 Edition.
- D. Method of Measurement.** The City will measure Steel Piling HP 12-Inch X 53 LB by the linear foot acceptably completed.
- E. Basis of Payment.** Steel Piling HP 12-Inch X 53 LB shall be paid for according to the contract unit price. Price bid shall include materials, labor, and equipment necessary for a complete installation as shown and specified including providing piling and including fabricating, delivering, preparing, splicing, cutting of piling, and disposing of pile cutoffs not used.

BID ITEM 90011 – PIPE UNDERDRAIN WRAPPED 6-INCH

- A. Description.** The work shall consist of providing 6-inch diameter pipe underdrain wrapped with geotextile fabric for the bridge as shown on the drawings.
- B. Materials.** Pipe Underdrain Wrapped 6-Inch shall conform to Section 612 of the State of Wisconsin Standard Specifications for Highway and Structure Construction, 2013 Edition.
- C. Construction Methods.** Pipe Underdrain Wrapped 6-Inch shall be constructed as shown on the drawings and as specified in Section 612 of the State of Wisconsin Standard Specifications for Highway and Structure Construction, 2013 Edition.
- D. Method of Measurement.** The City will measure Pipe Underdrain Wrapped 6-Inch by the linear foot acceptably completed.
- E. Basis of Payment.** Pipe Underdrain Wrapped 6-Inch shall be paid for according to the contract unit price. Price bid shall include materials, labor, and equipment necessary for a complete installation as shown and specified including providing, transporting, handling, and placing all materials including pipe, geotextile wrap, connections, fittings, rodent screens, caps, or plugs.

BID ITEM 90012 – STEEL RAILING SPECIAL

- A. Description.** The work shall consist of fabricating, galvanizing, painting and installing steel railing including anchor bolts for rail posts as shown on the drawings.
- B. Materials.**

RAILING STEEL: Railing steel shall conform to Section 513 of the State of Wisconsin Standard Specifications for Highway and Structure Construction, 2013 Edition and as specified in this special provision.

All materials for railing shall be new stock, free from defects impairing strength, durability and appearance. Railing assemblies shall be galvanized and receive a two-coat paint system. Bubbles, blisters and flaking in the coating will be a basis for rejection.

Galvanizing. After fabrication, blast clean steel railing assemblies per SSPC-SP6 and galvanize according to ASTM A123. Vent holes shall be drilled in members as required to facilitate galvanizing and drainage. Location and size of vent holes are to be shown on the shop drawings. All burrs at component edges, corners and at holes shall be removed and sharp edges chamfered before galvanizing. Condition any thermal cut edges before blast cleaning by

shallow grinding or other cleaning to remove any hardened surface layer. Remove all evident steel defects exposed in accordance to AASHTO M 160 prior to blast cleaning. Lumps, projections, globules, or heavy deposits of galvanizing, which will provide surface conditions that when painted, will produce unacceptable aesthetic and/or visual qualities, will not be permitted.

Two-Coat Paint System. After galvanizing, paint all exterior surfaces of steel railing assemblies and inside of rail elements at field erection and expansion joints as hereinafter provided. All galvanized surfaces to be painted shall be cleaned per SSPC-SP1 to remove chlorides, sulfates, zinc salts, oil, dirt, organic matter and other contaminants. The cleaned surface shall then be brush blast cleaned per SSPC-SP16 to create a slight angular surface profile per manufacturer's recommendation for adhesion of the tie coat. Blasting shall not fracture the galvanized finish or remove any dry film thickness. After cleaning, apply a tie coat from an approved coating system that is specifically intended to be used on a galvanized surface, per manufacturer's recommendations. The tie coat shall etch the galvanized rail and prepare the surface for the top coat. Apply a top coat per manufacturer's recommendations, matching the specified color shown on the plans. Use a preapproved top coat that is resistant to the effects of the sun and is suitable for a marine environment. The tie and top coats should be of contrasting colors, and come from the same manufacturer.

Ensure that the paint manufacturer reviews the process to be used for surface preparation and application of the paint coating system with the paint applicator. The review shall include a visit to the facility performing the work if requested by the paint manufacturer. Provide written confirmation, from the paint manufacturer to the engineer, that the review has taken place and that issues raised have been addressed before beginning coating work under the contract.

Use one of the qualified paint manufacturers and products given below. An equivalent system may be used with the written approval of the Engineer.

Manufacturer	Coat	Products	Dry Film Minimum Thickness (mils)	Min. Time¹ Between Coats (hours)
<u>Sherwin Williams</u> 1051 Perimeter Drive Suite 710 Schaumburg, IL 60173 847.330.1562	<i>Tie</i>	Recoatable Epoxy Primer	2.0 to 4.0	6
		B67-5 Series / B67V5		
	<i>Top</i>	Acrolon 218 HS	2.0 to 4.0	NA
		Polyurethane, B65-650		
<u>Carboline</u> 350 Hanley Industrial St. Louis, MO 63144 314.644.1000	<i>Tie</i>	Rustbond Penetrating Sealer FC	1	36
	<i>Tie</i>	Carboguard 60	4.0 to 6.0	10
	<i>Tie</i>	Carboguard 635	4.0 to 6.0	1
	<i>Top</i>	Carbothane 133 LH(satin)	4	NA
<u>Wasser Corporation</u> 4118 B Place NW Suite B Auburn, WA 98001 253.850.2967	<i>Tie</i>	MC-Ferrox B 100	3.0 to 5.0	8
	<i>Top</i>	MC-Luster 100	2.0 to 4.0	NA

¹ Time is dependent on temperature and humidity. Contact manufacturer for more specific information.

Shop Drawings. Submit shop drawings showing the details of railing construction. Show the railing height post spacing, rail location, weld sizes and locations and all dimensions necessary for the construction of the railing. Show location of shop rail splices, field erection joints and expansion joints. State the name of the paint manufacturer and the product name of the tie coat and top coat used along with the color. State the size and material type used for all components. Also show the size and location of any vent or drainage holes provided.

TYPE S ANCHORS: Type S anchors shall conform to Section 502 of the State of Wisconsin Standard Specifications for Highway and Structure Construction, 2013 Edition for Type S anchors. Anchors shall be stainless steel.

C. Construction Methods. The steel railing and type S anchors shall be constructed as shown on the drawings and as specified in Sections 513 and 502 respectively of the State of Wisconsin Standard Specifications for Highway and Structure Construction, 2013 Edition.

Delivery, Storage and Handling. Deliver material to the site in an undamaged condition. Upon receipt at the job site, all materials shall be thoroughly inspected to ensure that no damage occurred during shipping or handling and conditions of materials is in conformance with these specifications. If coating is damaged, Contractor shall repair or replace railing assemblies to the approval of the Engineer at no additional cost to the Owner. Carefully store the material off the ground to ensure proper ventilation and drainage. Exercise care so as not to damage the coated surface during railing installation. No field welding, field cutting or drilling will be permitted without the approval of the Engineer.

Touch-up and Repair. For minor damage caused by shipping, handling or installation to coated surfaces, touch-up the surface in conformance with the manufacturer's recommendations. If damage is excessive, the railing assembly shall be replaced at no additional cost to the Owner. The Contractor shall provide the Engineer with a copy of the manufacturer's recommended repair procedure and materials before repairing damaged coatings.

D. Method of Measurement. The City will measure Steel Railing Special by the linear foot acceptably completed.

E. Basis of Payment. Steel Railing Special shall be paid for according to the contract unit price. Price bid shall include materials, labor, and equipment necessary for a complete installation as shown and specified including fabricating, galvanizing, painting, transporting, and installing the railing, stainless steel Type S Anchors, and any touch-up and repairs.

BID ITEM 90013 – CONCRETE PAVEMENT APPROACH SLAB SPECIAL

A. Description. The work shall consist of providing concrete pavement approach slab for the bridge approaches as shown on the drawings.

B. Materials. Concrete Pavement Approach Slab Special shall conform to Section 415 of the State of Wisconsin Standard Specifications for Highway and Structure Construction, 2013 Edition.

C. Construction Methods. Concrete Pavement Approach Slab Special shall be constructed as shown on the drawings and as specified in Section 415 of the State of Wisconsin Standard Specifications for Highway and Structure Construction, 2013 Edition.

The concrete for the approach slabs shall be designed to meet a minimum compressive strength of 3500 psi.

D. Method of Measurement. The City will measure Concrete Pavement Approach Slab Special by the square yard acceptably completed.

E. Basis of Payment. Concrete Pavement Approach Slab Special shall be paid for according to the contract unit price. Price bid shall include materials, labor, and equipment necessary for a complete installation as shown and specified including providing the concrete, bar steel reinforcement, ties and dowels, and jointing materials.

BID ITEM 90014 – RESTORATION

DESCRIPTION

Work under this item shall include the fine grading of topsoil, seeding, installation of soil stabilizer and erosion matting at the locations shown on the drawings, or at other locations as directed by Engineer. This work shall be in accordance with Article 207 of the Standard Specifications.

Seed mix to be shade terrace mix.

Erosion mat shall be Class 1 Urban Type A and is to be used in all restoration areas.

This item shall include placement of soil stabilizer on all areas seeded in accordance with Section 207.3(f) of the Standard Specifications.

METHOD OF MEASUREMENT

Restoration shall be measured by the square yard.

BASIS OF PAYMENT

Restoration will be paid for at the contract price per square yard of finish grading, seeding, soil stabilizer and matting in accordance with Section 207.5, which shall be payment in full for furnishing, handling, and storing all seed; for preparing the seed bed and sowing the seed; for furnishing, hauling and placing mat and soil stabilizer; for maintenance of the work and repair of all damaged areas, and for furnishing, all labor, tools, equipment and incidentals necessary to complete the work. Contractor to note – the quantity shown on the proposal page is an estimate only. Final payment will be for the quantity measured and agreed upon by the contractor and the City in the field.

BID ITEM 90015 – TOPSOIL

DESCRIPTION

Work under this item shall include purchase, delivery, dumping and spreading (rough grading), of topsoil needed to finish top soiling along the path and where needed on the shoreline. The amount given on the proposal page is an estimate only. Final quantity for payment will be based on actual quantity of topsoil used. Contractor and the City are to agree on a way to quantify the amount of topsoil delivered in each truck prior to using this bid item. Preparing the seed bed (fine grading), seed and mat will be paid for under Bid Item # 90014 Restoration.

METHOD OF MEASUREMENT

Topsoil shall be measured by the cubic yard, totaled from truck load numbers provided to the City, purchased and delivered to the project site, then dumped and rough graded to the proposed grades where needed.

BASIS OF PAYMENT

Topsoil shall be paid at the cubic yard contract price for work as described and measured above.

CGC, Inc.

Construction • Geotechnical
Consulting Engineering/Testing

September 15, 2011
C11054-32

Mr. Tom Maglio
City of Madison – Parks Division
210 Martin Luther King Jr. Drive, Suite 120
P.O. Box 2987
Madison, WI 53701-2987

Re: Subsurface Exploration
Proposed Replacement Pedestrian Bridge
Tenney Park
N. Thornton Avenue
Madison, Wisconsin

Dear Mr. Maglio:

Construction • Geotechnical Consultants, Inc. (CGC) has completed the subsurface exploration for the proposed replacement pedestrian bridge on the north side of Tenney Park. The purpose of the subsurface exploration was to evaluate conditions in the vicinity of the proposed replacement bridge and to provide recommendations related to foundation design/construction. An electronic copy of this report is provided for your use, and a paper copy can be provided upon request.

PROJECT DESCRIPTION

We understand that the existing concrete arch bridge over a stream within Tenney Park will be replaced with a new bridge. We understand the bridge will likely be pile supported.

SITE CONDITIONS

Subsurface conditions within the vicinity of the proposed replacement bridge were explored by drilling two Standard Penetration Test (SPT) soil boring to depths of 40.8 and 43.2 ft below the ground surface. The borings were located just beyond the north and south abutments of the existing bridge and were extended until auger refusal occurred on apparent cobbles/boulders in very dense sand till. The borings were drilled by Soil Essentials (under subcontract to CGC) on September 13, 2011 using an ATV-mounted, rotary Geoprobe 7822DT drill rig equipped with hollow stem augers and an automatic hammer. The specific procedures used for drilling and sampling are described in Appendix A. The boring locations are shown on the Soil Boring Location Map in Appendix B. Ground surface elevations were estimated using a topographic map provided by the city. Upon completion of drilling, the borings were abandoned by backfilling with bentonite per WDNR

Mr. Tom Maglio
City of Madison – Parks Division
September 15, 2011
Page 2

specifications, and the soil samples were delivered to CGC's laboratory for visual classification. A CGC geotechnical engineer visually classified the soil samples using the Unified Soil Classification System.

The subsurface profile encountered at the borings was fairly similar and generally consisted of the following strata (in descending order):

- 7 in. of *concrete pavement* in Boring 1 and 2.5 in. of *asphalt pavement* in Boring 2; over
- 1 to 2.5 ft of *fill* consisting of loose sand or sand/gravel base course; followed by
- 1.5 to 5 ft of very loose *sedimentary peat* or *organic clayey silt*; followed by
- 4 to 5.5 ft of very loose to loose *silty sand* strata, underlain by
- Medium to very dense *sandy silt* and *sand* strata containing variable amounts of silt and gravel and scattered cobbles and boulders to auger refusal at 40.8 ft in Boring 1 and 43.2 ft in Boring 2 on apparent cobbles/boulders. SPT blowcounts are in the dense to very dense range by 15 ft below existing site grades in both locations.

Groundwater was encountered in the borings at 4.4 to 5.9 ft below existing site grades during and shortly after drilling. Fluctuations in the groundwater level should be expected due to seasonal variations in precipitation, infiltration, evapotranspiration, the level of nearby ponds, streams and lakes and other factors.

DISCUSSION AND FOUNDATION RECOMMENDATIONS

Based on the available subsurface information, it is our opinion that the abutments for the single-span bridge can be supported on steel HP piles or closed-end, steel pipe piles (as described in WisDOT *Standard Specifications for Highway and Structure Construction*, latest edition, Sections 510 and 511) driven to capacity or refusal within the very dense sand till underlying the site. Note that other foundation types, such as helical piers, could also be considered, and we can provide additional details, as needed. Thicker-walled pipe piles (e.g., 0.365 to 0.5-in. shell thickness) may be required to minimize damage and prevent overstressing due to the presence of cobbles and boulders.

Piles should be driven to refusal or capacity within the very dense granular soils underlying the site. We anticipate that HP10x42 piles or 10.75-in. diameter steel-shelled, cast-in-place (CIP) pipe piles will encounter refusal about 20 to 25 ft below existing site grades, with HP piles expected to drive a few feet deeper than pipe piles at this site.

Driving criteria for production piling should be established by the modified Engineering News formula or modified Gates formula, as discussed in the WisDOT *Bridge Manual*, Chapter 11. Pile capacities

Mr. Tom Maglio
City of Madison – Parks Division
September 15, 2011
Page 3

will be controlled by the allowable steel stresses. Design stresses should be limited to about one-third of the ultimate stress, or a design stress of 12 ksi for 36 ksi steel. When driving piles to refusal in a very dense end bearing layer, care should be exercised to prevent overstressing the piles during the final stages of driving. In our opinion, HP10x42 piles or 10.75-in. diameter steel-shelled, cast-in-place (CIP) pipe piles driven to refusal can conservatively be designed using an allowable capacity of 50 tons (assuming a factor of safety of 2). Refusal is typically defined as 10 to 20 blows/in. over the last one or two inches of driving.

Other pertinent design parameters include the following:

- For adequate frost protection, we recommend that the abutment pile caps be founded at least 4 ft below finish grade.
- Adequate scour protection should be provided to prevent erosion and exposure of the piles.
- It is recommended that the minimum spacing between individual piles be no less than 2.5 times the pile width. During driving of pipe piles, heaving and/or lateral displacements of driven piles may occur during subsequent nearby pile driving operations. Therefore, it is important that horizontal and vertical alignment checks be performed during the pile driving operation. Piles that heave more than 0.25 in. vertically must be reset.

CONSTRUCTION CONSIDERATIONS

Due to variations in weather, construction methods and other factors, specific construction problems are difficult to predict. Soil related difficulties that could be encountered on the site are discussed below:

- Earthwork construction during the early spring or late fall could be complicated as a result of wet weather and freezing temperatures. During cold weather, exposed subgrades should be protected from freezing before and after pile cap construction. Fill should never be placed while frozen or on frozen ground.
- Excavations extending greater than 4 ft in depth below the existing ground surface should be sloped in accordance with current OSHA standards.
- Cofferdams or other methods of stream division will likely be required so that pile cap and abutment construction can occur “in the dry.” Supplemental dewatering



Mr. Tom Maglio
City of Madison – Parks Division
September 15, 2011
Page 4

using submersible pumps within the cofferdams should also be expected, along with an approximately 12 in. thick stone working platform above the soft/wet soils.

RECOMMENDED CONSTRUCTION MONITORING

The level of care exercised during site development will largely determine the quality of the foundation subgrades. To check that earthwork and foundation construction proceeds in accordance with our recommendations, CGC should monitor the following operations:

- Pile driving observations;
- Fill placement and compaction; and
- Concrete placement.

* * * * *

We trust this report addresses your present needs. General limitations regarding the conclusions and opinions presented in this report are discussed in Appendix C. If you have any questions, please contact us.

Sincerely,
CGC, Inc.

David A. Staab, P.E., LEED AP
Consulting Professional

William W. Wuellner, P.E.
Senior Geotechnical Engineer

- Encl: Appendix A - Field Exploration
 Appendix B - Soil Boring Location Map
 Logs of Test Borings (2)
 Log of Test Boring-General Notes
 Unified Soil Classification System
 Appendix C - Document Qualifications

APPENDIX A

FIELD EXPLORATION

APPENDIX A

FIELD EXPLORATION

A total of two Standard Penetration Test (SPT) soil borings were drilled to depths of 40.8 and 43.2 ft below the ground surface. The borings were located just beyond the north and south abutments of the existing bridge and were extended until auger refusal occurred on apparent cobbles/boulders in very dense sand till. The borings were drilled by Soil Essentials (under subcontract to CGC) on September 13, 2011 using an ATV-mounted, rotary Geoprobe 7822DT drill rig equipped with hollow stem augers and an automatic hammer. The boring locations are shown on the Soil Boring Location Map in Appendix B. Ground surface elevations were estimated using a topographic map provided by the City. Upon completion of drilling, the borings were abandoned by backfilling with bentonite per WDNR specifications, and the soil samples were delivered to CGC's laboratory for visual classification. A CGC geotechnical engineer visually classified the soil samples using the Unified Soil Classification System.

The soil samples in the SPT borings were obtained in general accordance with specifications for standard penetration testing, ASTM D 1586. Soil samples were obtained at 2.5-foot intervals to a depth of 10 feet and at 5-foot intervals thereafter for each boring. The specific procedures used for drilling and sampling are described below.

1. Boring Procedures Between Samples

The boring is extended downward, between samples, by a hollow-stem auger.

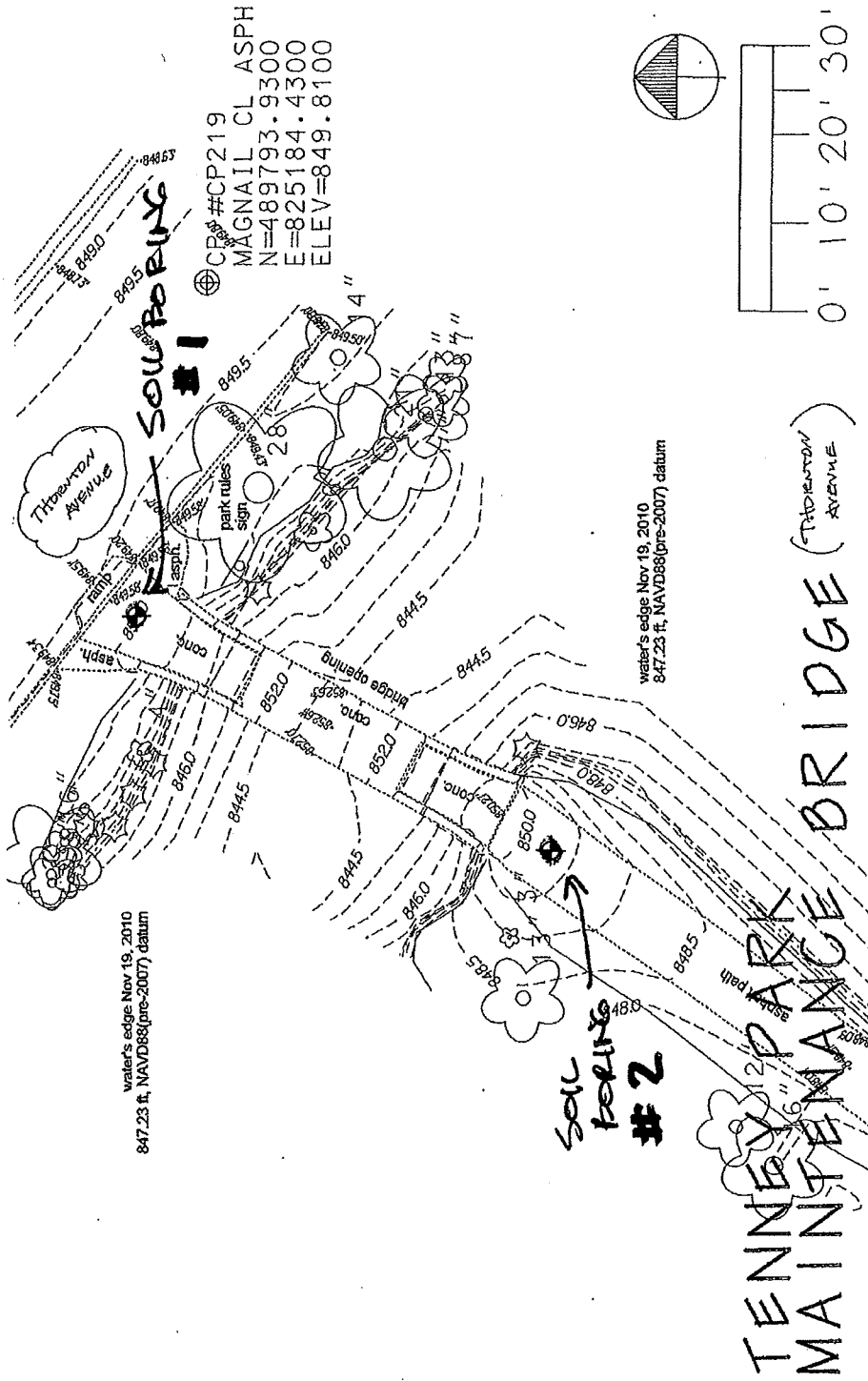
2. Standard Penetration Test and Split-Barrel Sampling of Soils
(ASTM Designation: D 1586)

This method consists of driving a 2-inch outside diameter split barrel sampler using a 140-pound weight falling freely through a distance of 30 inches. The sampler is first seated 6 inches into the material to be sampled and then driven 12 inches. The number of blows required to drive the sampler the final 12 inches is recorded on the log of borings and is known as the Standard Penetration Resistance. Recovered samples are first classified as to texture by the driller.

During the field exploration, the driller visually classified the soil and prepared a field log. Water level observations were made in each boring during and after drilling and are shown at the bottom of each boring log. Upon completion of drilling, the boreholes were grouted with bentonite slurry in accordance with WDNR regulations, and the soil samples were delivered to our laboratory for visual classification and laboratory testing. A CGC geotechnical engineer using the Unified Soil Classification System visually classified the soils. The final logs and a description of the Unified Soil Classification System are presented in Appendix B.

APPENDIX B

**SOIL BORING LOCATION MAP
LOGS OF TEST BORINGS (2)
LOG OF TEST BORING-GENERAL NOTES
UNIFIED SOIL CLASSIFICATION SYSTEM**



water's edge Nov 19, 2010
847.23 ft, NAVD88(pre-2007) datum

water's edge Nov 19, 2010
847.23 ft, NAVD88(pre-2007) datum

⊕ #CP219
MAGNAIL CL ASPH
N=489793.9300
E=825184.4300
ELEV=849.8100

⊕ Denotes recent soil boring location and number

Notes

1. Soil borings performed by Soil Essentials in September 2011.
2. Base map provided by City of Madison.
3. Boring locations are approximate.

Scale: As shown

CGC, Inc.

Date: 09/11

Job No.
C11054-32

SOIL BORING LOCATION MAP
Proposed Pedestrian Bridge
Thornton Avenue
Tenney Park
Madison, Wisconsin



LOG OF TEST BORING

Project Thornton Avenue Pedestrian Bridge
Tenney Park
 Location Madison, Wisconsin

Boring No. 1
 Surface Elevation (ft) 850±
 Job No. C11054-32
 Sheet 1 of 1

2921 Perry Street, Madison, WI 53713 (608) 288-4100, FAX (608) 288-7887

SAMPLE					VISUAL CLASSIFICATION and Remarks	SOIL PROPERTIES					
No.	TYPE	Rec (in.)	Moist	N		Depth (ft)	qu (qa) (tsf)	W	LL	PL	LI
1		8	M	8	0-8	7 in. Concrete Pavement					
2		16	M	3	8-16	FILL: Loose, Brown Silty Fine to Medium Sand, Little Gravel, Trace Clay					
3		10	W	10	16-26	Very Loose, Dark Gray/Black Sedimentary PEAT, Scattered Sand Seams (PT)	(0.0)				
4		14	W	18	26-40	Medium Dense, Green Gray Fine to Medium SAND, Little Silt and Shells, Trace Gravel (SP-SM)					
5		16	W	45	40-45	Medium Dense to Dense, Gray Fine to Medium SAND, Some Silt and Gravel, Scattered Cobbles/Boulders (SM)					
6		9	W	100	45-50	Dense to Very Dense, Gray Sandy SILT, Trace to Little Gravel, Scattered Cobbles/Boulders (ML)					
7		14	W	73	50-73	Medium Dense to Very Dense, Brown Fine to Medium SAND, Little to Some Silt and Gravel, Scattered Cobbles/Boulders and Silt Seams (SP-SM/SM)					
8		18	W	28	73-81						
9		4	W	100	81-85	Very Dense, Gray Silty Fine SAND, Trace to Little Gravel, Scattered Cobbles/Boulders and Clay Seams (SM)					
10		7	W	100	85-92						
					92-40.8	End Boring/Auger Refusal on Probable Cobbles/Boulders at 40.8 ft					
					40.8-45	Borehole backfilled with bentonite chips					

WATER LEVEL OBSERVATIONS

GENERAL NOTES

While Drilling Upon Completion of Drilling _____
 Time After Drilling _____ 1/2 hr _____
 Depth to Water _____ 4.4'
 Depth to Cave in _____

Start 9/13/11 End 9/13/11
 Driller SE Chief DAP Rig Geoprobe
 Logger MJS Editor DAS 7822DT
 Drill Method 2 1/4" HSA

The stratification lines represent the approximate boundary between soil types and the transition may be gradual.



LOG OF TEST BORING

Project Thornton Avenue Pedestrian Bridge
Tenney Park
 Location Madison, Wisconsin

Boring No. 2
 Surface Elevation (ft) 850±
 Job No. C11054-32
 Sheet 1 of 1

2921 Perry Street, Madison, WI 53713 (608) 288-4100, FAX (608) 288-7887

SAMPLE					VISUAL CLASSIFICATION and Remarks	SOIL PROPERTIES				
No.	TYPE	Rec (in.)	Moist	N		Depth (ft)	qu (qa) (tsf)	W	LL	PL
1		8	M	5	2.5 in. Asphalt Pavement					
2		0	M	1	FILL: Brown Crushed Aggregate Base Course					
3		4	W	1	Very Loose, Dark Gray/Black Organic Clayey SILT, Trace to Little Sand (OL - Possible Fill in Upper Portion of Layer)					
4		8	W	2	Very Loose, Gray-Brown Silty Fine SAND, Trace Gravel and Clay (SM)					
5		18	W	46	Dense, Gray Fine to Medium SAND, Trace Gravel, Scattered Cobbles/Boulders (SM)					
6		10	W	100	Very Dense, Gray Fine to Medium SAND, Some Silt and Gravel, Scattered Silt Seams (SM)					
7		18	W	61	Very Dense, Brown Fine to Medium SAND, Some Gravel, Little Silt, Scattered Cobbles/Boulders and Silt Seams (SP-SM)					
8		6	W	100	Very Dense, Gray Silty Fine SAND, Trace to Little Gravel, Scattered Cobbles/Boulders and Clay Seams (SM)					
9		6	W	100						
10		8	W	100						
					End Boring/Auger Refusal on Probable Cobble/Boulder at 43.2 ft Borehole backfilled with bentonite chips					

WATER LEVEL OBSERVATIONS

GENERAL NOTES

While Drilling Upon Completion of Drilling _____
 Time After Drilling _____ 1/2 hr
 Depth to Water _____ 5.9'
 Depth to Cave in _____

Start 9/13/11 End 9/13/11
 Driller SE Chief DAP Rig Geoprobe
 Logger MJS Editor DAS 7822DT
 Drill Method 2 1/4" HSA

The stratification lines represent the approximate boundary between soil types and the transition may be gradual.

CGC, Inc.

LOG OF TEST BORING
General Notes

Descriptive Soil Classification

GRAIN SIZE TERMINOLOGY

Soil Fraction	Particle Size	U.S. Standard Sieve Size
Boulders	Larger than 12"	Larger than 12"
Cobbles	3" to 12"	3" to 12"
Gravel: Coarse	3/4" to 3"	3/4" to 3"
Fine	4.76 mm to 3/4"	#4 to 3/4"
Sand: Coarse	2.00 mm to 4.76 mm	#10 to #4
Medium	0.42 to mm to 2.00 mm	#40 to #10
Fine	0.074 mm to 0.42 mm	#200 to #40
Silt	0.005 mm to 0.074 mm	Smaller than #200
Clay	Smaller than 0.005 mm	Smaller than #200

Plasticity characteristics differentiate between silt and clay.

GENERAL TERMINOLOGY

Physical Characteristics
Color, moisture, grain shape, fineness, etc.

Major Constituents
Clay, silt, sand, gravel

Structure
Laminated, varved, fibrous, stratified, cemented, fissured, etc.

Geologic Origin
Glacial, alluvial, eolian, residual, etc.

RELATIVE DENSITY

Term	"N" Value
Very Loose	0-4
Loose	4-10
Medium Dense	10-30
Dense	30-50
Very Dense	Over 50

RELATIVE PROPORTIONS OF OF COHESIONLESS SOILS

Proportional Term	Defining Range by Percentage of Weight
Trace	0%-5%
Little	5%-12%
Some	12%-35%
And	35%-50%

CONSISTENCY

Term	q _r -tons/sq. ft.
Very Soft	0.0 to 0.25
Soft	0.25 to 0.50
Medium	0.50 to 1.0
Stiff	1.0 to 2.0
Very Stiff	2.0 to 4.0
Hard	Over 4.0

ORGANIC CONTENT BY COMBUSTION METHOD

Soil Description	Loss on Ignition
Non Organic	Less than 4%
Organic Silt/Clay	4-12%
Sedimentary Peat	12-50%
Fibrous and Woody Peat	More than 50%

PLASTICITY

Term	Plastic Index
None to Slight	0-4
Slight	5-7
Medium	8-22
High to Very High	Over 22

The penetration resistance, N, is the summation of the number of blows required to effect two successive 6" penetrations of the 2" split-barrel sampler. The sampler is driven with a 140 lb. weight falling 30" and is seated to a depth of 6" before commencing the standard penetration test.

SYMBOLS

DRILLING AND SAMPLING

CS--Continuous Sampling
RC--Rock Coring: Size AW, BW, NW, 2"W
RQD--Rock Quality Designator
RB--Rock Bit
FT--Fish Tail
DC--Drove Casing
C--Casing: Size 2 1/2", NW, 4", HW
CW--Clear Water
DM--Drilling Mud
HSA--Hollow Stem Auger
FA--Flight Auger
HA--Hand Auger
COA--Clean-Out Auger
SS--2" Diameter Split-Barrel Sample
2ST--2" Diameter Thin-Walled Tube Sample
3ST--3" Diameter Thin-Walled Tube Sample
PT--3" Diameter Piston Tube Sample
AS--Auger Sample
WS--Wash Sample
PTS--Peat Sample
PS--Pitcher Sample
NR--No Recovery
S--Sounding
PMT--Borehole Pressuremeter Test
VS--Vane Shear Test
WPT--Water Pressure Test

LABORATORY TESTS

q_a--Penetrometer Reading, tons/sq. ft.
q_u--Unconfined Strength, tons/sq. ft.
W--Moisture Content, %
LL--Liquid Limit, %
PL--Plastic Limit, %
SL--Shrinkage Limit, %
LI--Loss on Ignition, %
D--Dry Unit Weight, lbs/cu. ft.
pH--Measure of Soil Alkalinity or Acidity
FS--Free Swell, %

WATER LEVEL MEASUREMENT

▽ --Water Level at time shown
NW--No Water Encountered
WD--While Drilling
BCR--Before Casing Removal
ACR--After Casing Removal
CW--Caved and Wet
CM--Caved and Moist

Note: Water level measurements shown on the boring logs represent conditions at the time indicated and may not reflect static levels, especially in cohesive soils.

UNIFIED SOIL CLASSIFICATION SYSTEM

COARSE-GRAINED SOILS

(More than half of material is larger than No. 200 sieve size.)

GRAVELS More than half of coarse fraction larger than No. 4 sieve size	Clean Gravels (Little or no fines)	
	GW	Well-graded gravels, gravel-sand mixtures, little or no fines
	GP	Poorly graded gravels, gravel-sand mixtures, little or no fines
	Gravels with Fines (Appreciable amount of fines)	
	GM_u^d	Silty gravels, gravel-sand-silt mixtures
	GC	Clayey gravels, gravel-sand-clay mixtures
SANDS More than half of coarse fraction smaller than No. 4 sieve size	Clean Sands (Little or no fines)	
	SW	Well-graded sands, gravelly sands, little or no fines
	SP	Poorly graded sands, gravelly sands, little or no fines
	Sands with Fines (Appreciable amount of fines)	
	SM_u^d	Silty sands, sand-silt mixtures
	SC	Clayey sands, sand-clay mixtures

FINE-GRAINED SOILS

(More than half of material is smaller than No. 200 sieve.)

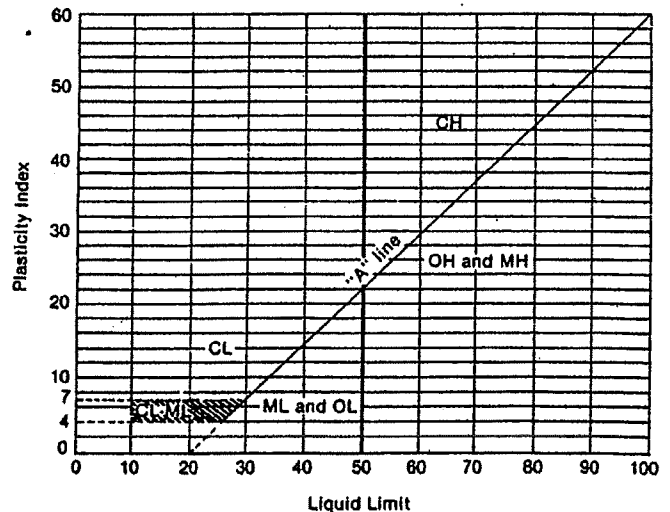
SILTS AND CLAYS Liquid limit less than 50%	ML	Inorganic silts and very fine sands, rock flour, silty or clayey fine sands or clayey silts with slight plasticity
	CL	Inorganic clays of low to medium plasticity, gravelly clays, sandy clays, silty clays, lean clays
	OL	Organic silts and organic silty clays of low plasticity
SILTS AND CLAYS Liquid limit greater than 50%	MH	Inorganic silts, micaceous or diatomaceous fine sandy or silty soils, elastic silts
	CH	Inorganic clays of high plasticity, fat clays
	OH	Organic clays of medium to high plasticity, organic silts
HIGHLY ORGANIC SOILS	PT	Peat and other highly organic soils

LABORATORY CLASSIFICATION CRITERIA

GW	$C_u = \frac{D_{60}}{D_{10}}$ greater than 4; $C_c = \frac{(D_{30})^2}{D_{10} \times D_{60}}$ between 1 and 3	
GP	Not meeting all gradation requirements for GW	
GM	Atterberg limits below "A" line or P.I. less than 4	Above "A" line with P.I. between 4 and 7 are borderline cases requiring use of dual symbols
GC	Atterberg limits above "A" line with P.I. greater than 7	
SW	$C_u = \frac{D_{60}}{D_{10}}$ greater than 6; $C_c = \frac{(D_{30})^2}{D_{10} \times D_{60}}$ between 1 and 3	
SP	Not meeting all gradation requirements for SW	
SM	Atterberg limits below "A" line or P.I. less than 4	Limits plotting in hatched zone with P.I. between 4 and 7 are borderline cases requiring use of dual symbols.
SC	Atterberg limits above "A" line with P.I. greater than 7	

Determine percentages of sand and gravel from grain-size curve. Depending on percentage of fines (fraction smaller than No. 200 sieve size), coarse-grained soils are classified as follows:
 Less than 5 per cent GW, GP, SW, SP
 More than 12 per cent GM, GC, SM, SC
 5 to 12 per cent Borderline cases requiring dual symbols

PLASTICITY CHART



For classification of fine-grained soils and fine fraction of coarse-grained soils.

Atterberg Limits plotting in hatched area are borderline classifications requiring use of dual symbols.

Equation of A-line: $PI = 0.73(LL - 20)$

APPENDIX C

DOCUMENT QUALIFICATIONS

APPENDIX C DOCUMENT QUALIFICATIONS

I. GENERAL RECOMMENDATIONS/LIMITATIONS

CGC, Inc. should be provided the opportunity for a general review of the final design and specifications to confirm that earthwork and foundation requirements have been properly interpreted in the design and specifications. CGC should be retained to provide soil engineering services during excavation and subgrade preparation. This will allow us to observe that construction proceeds in compliance with the design concepts, specifications and recommendations, and also will allow design changes to be made in the event that subsurface conditions differ from those anticipated prior to the start of construction. CGC does not assume responsibility for compliance with the recommendations in this report unless we are retained to provide construction testing and observation services.

This report has been prepared in accordance with generally accepted soil and foundation engineering practices and no other warranties are expressed or implied. The opinions and recommendations submitted in this report are based on interpretation of the subsurface information revealed by the test borings indicated on the location plan. The report does not reflect potential variations in subsurface conditions between or beyond these borings. Therefore, variations in soil conditions can be expected between the boring locations and fluctuations of groundwater levels may occur with time. The nature and extent of the variations may not become evident until construction.

II. IMPORTANT INFORMATION ABOUT YOUR GEOTECHNICAL ENGINEERING REPORT

Geotechnical engineers structure their services to meet the specific needs of their clients. A geotechnical engineering study conducted for a civil engineer may not fulfill the needs of a construction contractor or even another civil engineer. Because each geotechnical engineering study is unique, each geotechnical engineering report is unique, prepared *solely* for the client. *No one except you* should rely on your geotechnical engineering report without first conferring with the geotechnical engineer who prepared it. *And no one - not even you* - should apply the report for any purpose or project except the one originally contemplated.

Serious problems have occurred because those relying on a geotechnical engineering report did not read it all. Do not rely on an executive summary. Do not read selected elements only.

A GEOTECHNICAL ENGINEERING REPORT IS BASED ON A UNIQUE SET OF PROJECT-SPECIFIC FACTORS

Geotechnical engineers consider a number of unique, project-specific factors when establishing the scope of a study. Typical factors include: the client's goals, objectives, and risk management preferences; the general nature of the structure involved, its size, and configuration; the location of the structure on the site; and other planned or existing site improvements, such as access roads, parking lots, and underground utilities. Unless the geotechnical engineer who conducted the study specifically indicates otherwise, *do not rely on a geotechnical engineering report* that was:

- not prepared for you,
- not prepared for your project,
- not prepared for the specific site explored, or
- completed before important project changes were made.

Typical changes that can erode the reliability of an existing geotechnical report include those that affect:

- the function of the proposed structure, as when it's changed from a parking garage to an office building, or from a light industrial plant to a refrigerated warehouse,
- elevation, configuration, location, orientation, or weight of the proposed structure,
- composition of the design team, or project ownership.

As a general rule, , *always* inform your geotechnical engineer of project changes - even minor ones - and request an assessment of their impact. *CGC cannot accept responsibility or liability for problems that occur because our reports do not consider developments of which we were not Informed.*

SUBSURFACE CONDITIONS CAN CHANGE

A geotechnical engineering report is based on conditions that existed at the time the study was performed. *Do not rely on a geotechnical engineering report* whose adequacy may have been affected by: the passage of time; by man-made events, such as construction on or adjacent to the site; or by natural events, such as floods, earthquakes, or groundwater fluctuations. *Always* contact the geotechnical engineer before applying the report to determine if it is still reliable. A minor amount of additional testing or analysis could prevent major problems.

MOST GEOTECHNICAL FINDINGS ARE PROFESSIONAL OPINION

Site exploration identifies subsurface conditions only at those points where surface tests are conducted or samples are taken. Geotechnical engineers review field and laboratory data and then apply their professional judgement to render an opinion about subsurface conditions throughout the site. Actual subsurface conditions may differ - sometimes significantly - from those indicated in your report. Retaining the geotechnical engineer who developed your report to provide construction observation is the most effective method of managing the risks associated with unanticipated conditions.

A REPORT'S RECOMMENDATIONS ARE NOT FINAL

Do not over-rely on the construction recommendations included in your report. *Those recommendations are not final*, because geotechnical engineers develop them principally from judgement and opinion, geotechnical engineers can finalize their recommendations only by observing actual subsurface conditions revealed during construction. *CGC cannot assume responsibility or liability for the report's recommendations if we do not perform construction observation.*

A GEOTECHNICAL ENGINEERING REPORT IS SUBJECT TO MISINTERPRETATION

Other design team members' misinterpretation of geotechnical engineering reports has resulted in costly problems. Lower that risk by having your geotechnical engineer confer with appropriate members of the design team after submitting the report. Also retain your geotechnical engineer to review pertinent elements of the design team's plans and specifications. Contractors can also misinterpret a geotechnical engineering report. Reduce that risk by having CGC participate in prebid and preconstruction conferences, and by providing construction observation.

DO NOT REDRAW THE ENGINEER'S LOGS

Geotechnical engineers prepare final boring and testing logs based upon their interpretation of field logs and laboratory data. To prevent errors or omissions, the logs included in a geotechnical engineering report should *never* be redrawn for inclusion in architectural or other design drawings. Only photographic or electronic reproduction is acceptable, *but recognize that separating logs from the report can elevate risk.*

GIVE CONTRACTORS A COMPLETE REPORT AND GUIDANCE

Some owners and design professionals mistakenly believe they can make contractors liable for unanticipated subsurface conditions by limiting what they provide for bid preparation. To help prevent costly problems, give contractors the complete geotechnical engineering report, *but* preface it with a clearly written letter of transmittal. In that letter, advise contractors that the report was not prepared for purposes of bid development and that the report's accuracy is limited; encourage them to confer with the geotechnical engineer who prepared the report (a modest fee may be required) and/or to conduct additional study to obtain the specific types of information they need or prefer. A prebid conference can also be valuable. *Be sure contractors have sufficient time* to perform additional study. Only then might you be in a position to give contractors the best information available to you, while requiring them to at least share some of the financial responsibilities stemming from unanticipated conditions.

READ RESPONSIBILITY PROVISIONS CLOSELY

Some clients, design professionals, and contractors do not recognize that geotechnical engineering is far less exact than other engineering disciplines. This lack of understanding has created unrealistic expectations that have led to disappointments, claims, and disputes. To help reduce such risks, geotechnical engineers commonly include a variety of explanatory provisions in their reports. Sometimes

labeled "limitations," many of these provisions indicate where geotechnical engineer's responsibilities begin and end, to help others recognize their own responsibilities and risks. Read these provisions closely. Ask questions. Your geotechnical engineer should respond fully and frankly.

GEOENVIRONMENTAL CONCERNS ARE NOT COVERED

The equipment, techniques, and personnel used to perform a *geoenvironmental* study differ significantly from those used to perform a *geotechnical* study. For that reason, a geotechnical engineering report does not usually relate any geoenvironmental findings, conclusions, or recommendations; e.g., about the likelihood of encountering underground storage tanks or regulated contaminants. *Unanticipated environmental problems have led to numerous project failures.* If you have not yet obtained your own geoenvironmental information, ask your geotechnical consultant for risk management guidance. *Do not rely on an environmental report prepared for someone else.*

OBTAIN PROFESSIONAL ASSISTANCE TO DEAL WITH MOLD

Diverse strategies can be applied during building design, construction, operation, and maintenance to prevent significant amounts of mold from growing on indoor surfaces. To be effective, all such strategies should be devised for the *express purpose* of mold prevention, integrated into a comprehensive plan, and executed with diligent oversight by a professional mold prevention consultant. Because just a small amount of water or moisture can lead to the development of severe mold infestations, a number of mold prevention strategies focus on keeping building surfaces dry. While groundwater, water infiltration, and similar issues may have been addressed as part of the geotechnical engineering study whose findings are conveyed in this report, the geotechnical engineer in charge of this project is not a mold prevention consultant; *none of the services performed in connection with the geotechnical engineer's study were designed or conducted for the purpose of mold prevention.* *Proper implementation of the recommendations conveyed in this report will not of itself be sufficient to prevent mold from growing in or on the structure involved.*

RELY ON YOUR GEOTECHNICAL ENGINEER FOR ADDITIONAL ASSISTANCE

Membership in ASFE exposes geotechnical engineers to a wide array of risk management techniques that can be of genuine benefit for everyone involved with a construction project. Confer with CGC, a member of ASFE, for more information.

Modified and reprinted with permission from:

ASFE/The Best People on Earth
881 Colesville Road, Suite G 106
Silver Spring, MD 20910

SECTION E: PROPOSAL

**TENNEY PARK MAINTENANCE BRIDGE
CONTRACT NO. 6656**

Bidder must state a Unit Price and Total Bid for each item. The Total Bid for each item must be the product of quantity, by Unit Price. The Grand Total must be the sum of the Total Bids for the various items. In case of multiplication errors or addition errors, the Grand Total with corrected multiplication and/or addition shall determine the Grand Total bid for each contract. The Unit Price and Total Bid must be entered numerically in the spaces provided. All words and numbers shall be written in ink.

1. The undersigned having familiarized himself/herself with the Contract documents, including Advertisement for Bids, Instructions to Bidders, Form of Proposal, City of Madison Standard Specifications for Public Works Construction - 2012 Edition thereto, Form of Agreement, Form of Bond, and Addenda issued and attached to the plans and specifications on file in the office of the City Engineer, hereby proposes to provide and furnish all the labor, materials, tools, and expendable equipment necessary to perform and complete in a workmanlike manner the specified construction on this project for the City of Madison; all in accordance with the plans and specifications as prepared by the City Engineer, including Addenda to the Contract Nos. _____ through _____ issued thereto, at the prices for said work as contained in this proposal.
2. If awarded the Contract, we will initiate action within seven (7) days after notification or in accordance with the date specified in the contract to begin work and will proceed with diligence to bring the project to full completion within the number of work days allowed in the Contract or by the calendar date stated in the Contract.
3. The undersigned Bidder or Contractor certifies that he/she is not a party to any contract, combination in form of trust or otherwise, or conspiracy in restraint of trade or commerce or any other violation of the anti-trust laws of the State of Wisconsin or of the United States, with respect to this bid or contract or otherwise.
4. Accompanying this Proposal is Bid Bond or Certified Check in the amount of _____ Dollars (\$ _____) or a Certificate of Biennial Bid Bond as required by the Advertisement for Bids.
(IF BID BOND IS USED, IT SHALL BE SUBMITTED ON THE FORMS PROVIDED BY THE CITY. FAILURE TO DO SO MAY RESULT IN REJECTION OF THE BID).
5. I hereby certify that all statements herein are made on behalf of _____
(name of corporation, partnership, or person submitting bid)
a corporation organized and existing under the laws of the State of _____ a
partnership consisting of _____; an individual trading as _____; of
the City of _____; State of _____; that I have examined and carefully prepared this
Proposal, from the plans and specifications and have checked the same in detail before submitting
this Proposal; that I have fully authority to make such statements and submit this Proposal in (its,
their) behalf; and that the said statements are true and correct.

SIGNATURE

TITLE, IF ANY

Sworn and subscribed to before me this
_____ day of _____, 20_____

(Notary Public or other officer authorized to administer oaths)
My Commission Expires _____

Bidders shall not add any conditions or qualifying statements to this Proposal.

**TENNEY PARK MAINTENANCE BRIDGE
CONTRACT NO. 6656**

State of Wisconsin
Department of Workforce Development
Equal Rights Division
Labor Standards Bureau

Disclosure of Ownership

Notice required under Section 15.04(1)(m), Wisconsin Statutes. The statutory authority for the use of this form is prescribed in Sections 66.0903(12)(d) and 103.49(7)(d), Wisconsin Statutes. The use of this form is mandatory. The penalty for failing to complete this form is prescribed in Section 103.005(12), Wisconsin Statutes. Personal information you provide may be used for secondary purposes.

- (1) On the date a contractor submits a bid to or completes negotiations with a state agency or local governmental unit, on a project subject to Section 66.0903 or 103.49, Wisconsin Statutes, the contractor shall disclose to such state agency or local governmental unit the name of any "other construction business", which the contractor, or a shareholder, officer or partner of the contractor, owns or has owned within the preceding three (3) years.
- (2) The term "other construction business" means any business engaged in the erection, construction, remodeling, repairing, demolition, altering or painting and decorating of buildings, structures or facilities. It also means any business engaged in supplying mineral aggregate, or hauling excavated material or spoil as provided by Sections 66.0903(3), 103.49(2) and 103.50(2), Wisconsin Statutes.
- (3) This form must **ONLY** be filed, with the state agency or local governmental unit that will be awarding the contract, if **both (A) and (B) are met.**
 - (A) The contractor, or a shareholder, officer or partner of the contractor:
 - (1) Owns at least a 25% interest in the "other construction business", indicated below, on the date the contractor submits a bid or completes negotiations.
 - (2) Or has owned at least a 25% interest in the "other construction business" at any time within the preceding three (3) years.
 - (B) The Wisconsin Department of Workforce Development (DWD) has determined that the "other construction business" has failed to pay the prevailing wage rate or time and one-half the required hourly basic rate of pay, for hours worked in excess of the prevailing hours of labor, to any employee at any time within the preceding three (3) years.

Other Construction Business

Name of Business

Street Address or P O Box	City	State	Zip Code
---------------------------	------	-------	----------

Name of Business

Street Address or P O Box	City	State	Zip Code
---------------------------	------	-------	----------

Name of Business

Street Address or P O Box	City	State	Zip Code
---------------------------	------	-------	----------

I hereby state under penalty of perjury that the information, contained in this document, is true and accurate according to my knowledge and belief.

Print the Name of Authorized Officer

Signature of Authorized Officer	Date Signed
---------------------------------	-------------

Name of Corporation, Partnership or Sole Proprietorship

Street Address or P O Box	City	State	Zip Code
---------------------------	------	-------	----------

If you have any questions call (608) 266-0028

ERD-7777-E (R. 09/2003)

**TENNEY PARK MAINTENANCE BRIDGE
CONTRACT NO. 6656**

Best Value Contracting

1. The Contractor shall indicate the non-apprenticeable trades used on this contract.

2. Some Contractors are exempt due to the size of the work force. Apprenticeable trades are those trades considered apprenticeable by the State of Wisconsin.

Check Here if the Contractor has a total skilled work force of four or less individuals in all apprenticeable trades combined. This contractor is exempt from Best Value Contracting.

3. The Contractor shall indicate on page E-4 which apprenticeable trades are to be used on this Contract and shall indicate by checking the appropriate box for the trades used, how the contractor will comply with Madison General Ordinance 33.07(7).

Legend

Number of Journeyworkers	The Contractor shall indicated for trades to be used on this Contract only, the number of journeyworkers that the Contractor has employed company wide.
W-ATT	The Contractor is an active trade trainer in the State of Wisconsin for the trade indicated.
US-ATT	The Contractor is an active trade trainer in an apprenticeship program approved by the U.S. Department of Labor or another state apprenticeship agency in the trade indicated.
SB-ATT	The Contractor shall become an active trade trainer prior to beginning work on the Contract in the trade indicated.

- The Contractor has reviewed the list on page E-4 and shall not use any apprenticeable trades on this project.
- The Contractor has reviewed this list on E-4 and has checked the appropriate box by each apprenticeable trade to be used on the project.

**TENNEY PARK MAINTENANCE BRIDGE
CONTRACT NO. 6656**

Apprenticeable Trades

Check the box in the column "Trade Used on This Project" for each apprenticeable trades used on this project. For those trades used on the project indicated the number of journeyworkers that are employed company wide and check a box to the right of the trade as to how the Contractor will comply MGO 33.07(7). Refer to the legend on page E-3 for the meaning associated with each heading. The Contractor must check one of the boxes on the right for each apprenticeable trade used and checked on the left.

Trade Used on Contract	Apprenticeable Trades	Number of Journeyworkers	W-ATT	US-ATT	SB-ATT
<input type="checkbox"/>	Bricklayer		<input type="checkbox"/>	<input type="checkbox"/>	<input type="checkbox"/>
<input type="checkbox"/>	Carpenter		<input type="checkbox"/>	<input type="checkbox"/>	<input type="checkbox"/>
<input type="checkbox"/>	Cement Mason / Concrete Finisher		<input type="checkbox"/>	<input type="checkbox"/>	<input type="checkbox"/>
<input type="checkbox"/>	Cement Mason (Heavy Highway)		<input type="checkbox"/>	<input type="checkbox"/>	<input type="checkbox"/>
<input type="checkbox"/>	Construction Craft Laborer		<input type="checkbox"/>	<input type="checkbox"/>	<input type="checkbox"/>
<input type="checkbox"/>	Data Communication Installer		<input type="checkbox"/>	<input type="checkbox"/>	<input type="checkbox"/>
<input type="checkbox"/>	Electrician		<input type="checkbox"/>	<input type="checkbox"/>	<input type="checkbox"/>
<input type="checkbox"/>	Environmental Systems Technician / HVAC Service Tech/HVAC Install / Service		<input type="checkbox"/>	<input type="checkbox"/>	<input type="checkbox"/>
<input type="checkbox"/>	Glazier		<input type="checkbox"/>	<input type="checkbox"/>	<input type="checkbox"/>
<input type="checkbox"/>	Heavy Equipment Operator / Operating Engineer		<input type="checkbox"/>	<input type="checkbox"/>	<input type="checkbox"/>
<input type="checkbox"/>	Insulation Worker (Heat & Frost)		<input type="checkbox"/>	<input type="checkbox"/>	<input type="checkbox"/>
<input type="checkbox"/>	Iron Worker		<input type="checkbox"/>	<input type="checkbox"/>	<input type="checkbox"/>
<input type="checkbox"/>	Iron Worker (Assembler, Metal Bldgs)		<input type="checkbox"/>	<input type="checkbox"/>	<input type="checkbox"/>
<input type="checkbox"/>	Painter & Decorator		<input type="checkbox"/>	<input type="checkbox"/>	<input type="checkbox"/>
<input type="checkbox"/>	Plasterer		<input type="checkbox"/>	<input type="checkbox"/>	<input type="checkbox"/>
<input type="checkbox"/>	Plumber		<input type="checkbox"/>	<input type="checkbox"/>	<input type="checkbox"/>
<input type="checkbox"/>	Residential Electrician		<input type="checkbox"/>	<input type="checkbox"/>	<input type="checkbox"/>
<input type="checkbox"/>	Roofer & Waterproofer		<input type="checkbox"/>	<input type="checkbox"/>	<input type="checkbox"/>
<input type="checkbox"/>	Sheet Metal Worker		<input type="checkbox"/>	<input type="checkbox"/>	<input type="checkbox"/>
<input type="checkbox"/>	Sprinklerfitter		<input type="checkbox"/>	<input type="checkbox"/>	<input type="checkbox"/>
<input type="checkbox"/>	Steamfitter		<input type="checkbox"/>	<input type="checkbox"/>	<input type="checkbox"/>
<input type="checkbox"/>	Steamfitter (Refrigeration)		<input type="checkbox"/>	<input type="checkbox"/>	<input type="checkbox"/>
<input type="checkbox"/>	Steamfitter (Service)		<input type="checkbox"/>	<input type="checkbox"/>	<input type="checkbox"/>
<input type="checkbox"/>	Taper & Finisher		<input type="checkbox"/>	<input type="checkbox"/>	<input type="checkbox"/>
<input type="checkbox"/>	Telecommunications (Voice, Data & Video) Installer-Technician		<input type="checkbox"/>	<input type="checkbox"/>	<input type="checkbox"/>
<input type="checkbox"/>	Tile Setter		<input type="checkbox"/>	<input type="checkbox"/>	<input type="checkbox"/>

PROPOSAL

NAME OF BIDDER

TENNEY PARK MAINTENANCE BRIDGE

Contract No. 6656

ITEM	TYPE OF WORK	ESTIMATED QUANTITIES		UNIT PRICE BID	TOTAL BID
ACCOUNT NO. CL60-58201-810687-00-0000000-60108C00					
10701	Traffic Control	1.0	LS		\$ -
10911	Mobilization	1.0	LS		\$ -
20101	Excavation Cut	57.0	CY		\$ -
20218	1 1/2" Crushed Stone Base Course	50.0	Ton		\$ -
20303	Sawcut Bituminous Pavement	56.0	LF		\$ -
20322	Remove/Dispose of Curb	60.0	LF		\$ -
21018	Silt Sock	110	LF		\$ -
90000	Construction Fence	235	LF		\$ -
90001	Removing Old Structure Over Waterway Sta 11+50	1.0	LS		\$ -
90002	Excavation for Structure Bridges	1.0	LS		\$ -
90003	Cofferdams	1	LS		\$ -
90004	Backfill Structure	115	CY		\$ -
90005	Concrete Masonry Bridges	81.0	CY		\$ -
90006	Protective Surface Treatment	97.0	SY		\$ -
90007	Bar Steel Reinforcement HS Bridges	2000.0	LBS		\$ -
90008	Bar Steel Reinforcement HS Coated Bridges	8650.0	LBS		\$ -
90009	Rubberized Membrane Waterproofing	12.0	SY		\$ -
90010	Steel Piling HP 12-InchX53 LB	360.0	LF		\$ -
90011	Pipe Underdrain Wrapped 6-Inch	100.0	LF		\$ -

PROPOSAL

NAME OF BIDDER

TENNEY PARK MAINTENANCE BRIDGE

Contract No. 6656

ITEM	TYPE OF WORK	ESTIMATED QUANTITIES		UNIT PRICE BID	TOTAL BID
90012	Steel Railing, Special	98.0	LF		\$ -
90013	Concrete Pavement Approach Slab, Special	20.0	SY		\$ -
90014	Restoration	64.0	SY		\$ -
90015	Topsoil	50.0	CY		\$ -
90016	Clearing & Grubbing	1.0	LS		\$ -

\$ -

GRAND TOTAL

\$0.00

SECTION F: BID BOND

KNOW ALL MEN BY THESE PRESENT, THAT _____
(a corporation of the State of _____) (individual), (partnership), hereinafter referred to as the "Principal") and _____, a corporation of the State of _____ (hereinafter referred to as the "Surety") and licensed to do business in the State of Wisconsin, are held and firmly bound unto the City of Madison, (hereinafter referred to as the "Obligee"), in the sum of five per cent (5%) of the amount of the total bid or bids of the Principal herein accepted by the Obligee, for the payment of which the Principal and the Surety bind themselves, their heirs, executors, administrators, successors and assigns, jointly and severally, firmly by these presents.

The conditions of this obligation are such that, whereas the Principal has submitted, to the City of Madison a certain bid, including the related alternate, and substitute bids attached hereto and hereby made a part hereof, to enter into a contract in writing for the construction of:

TENNEY PARK MAINTENANCE BRIDGE CONTRACT NO. 6656

1. If said bid is rejected by the Obligee, then this obligation shall be void.
2. If said bid is accepted by the Obligee and the Principal shall execute and deliver a contract in the form specified by the Obligee (properly completed in accordance with said bid) and shall furnish a bond for his/her faithful performance of said contract, and for the payment of all persons performing labor or furnishing materials in connection therewith, and shall in all other respects perform the agreement created by the acceptance of said bid, then this obligation shall be void.

If said bid is accepted by the Obligee and the Principal shall fail to execute and deliver the contract and the performance and payment bond noted in 2. above executed by this Surety, or other Surety approved by the City of Madison, all within the time specified or any extension thereof, the Principal and Surety agree jointly and severally to forfeit to the Obligee as liquidated damages the sum mentioned above, it being understood that the liability of the Surety for any and all claims hereunder shall in no event exceed the sum of this obligation as stated, and it is further understood that the Principal and Surety reserve the right to recover from the Obligee that portion of the forfeited sum which exceed the actual liquidated damages incurred by the Obligee.

The Surety, for value received, hereby stipulates and agrees that the obligations of said Surety and its bond shall be in no way impaired or affected by an extension of the time within which the Obligee may accept such bid, and said Surety does hereby waive notice of any such extension.

IN WITNESS WHEREOF, the Principal and the Surety have hereunto set their hands and seals, and such of them as are corporations have caused their corporate seals to be hereto affixed and these presents to be signed by their proper officers, on the day and year set forth below.

Seal

Principal

Date

By:

Name of Surety

By:

Date

This certifies that I have been duly licensed as an agent for the above company in Wisconsin under License No. _____ for the year _____, and appointed as attorney in fact with authority to execute this bid bond and the payment and performance bond referred to above, which power of attorney has not been revoked.

Date

Agent

Address

City, State and Zip Code

Telephone Number

NOTE TO SURETY & PRINCIPAL

The bid submitted which this bond guarantees may be rejected if the following instrument is not attached to this bond:

Power of Attorney showing that the agent of Surety is currently authorized to execute bonds on behalf of the Surety, and in the amounts referenced above.

Certificate of Biennial Bid Bond

TIME PERIOD - VALID (FROM/TO)
NAME OF SURETY
NAME OF CONTRACTOR
CERTIFICATE HOLDER <p style="text-align: center;">City of Madison, Wisconsin</p>

This is to certify that a biennial bid bond issued by the above-named Surety is currently on file with the City of Madison.

This certificate is issued as a matter of information and conveys no rights upon the certificate holder and does not amend, extend or alter the coverage of the biennial bid bond.

Cancellation: Should the above policy be cancelled before the expiration date, the issuing Surety will give thirty (30) days written notice to the certificate holder indicated above.

Signature of Authorized Contractor Representative

Date

SECTION G: AGREEMENT

THIS AGREEMENT made this _____ day of _____ in the year Two Thousand and Twelve between _____ hereinafter called the Contractor, and the City of Madison, Wisconsin, hereinafter called the City.

WHEREAS, the Common Council of the said City of Madison under the provisions of a resolution adopted _____, _____, and by virtue of authority vested in the said Council, has awarded to the Contractor the work of performing certain construction.

NOW, THEREFORE, the Contractor and the City, for the consideration hereinafter named, agree as follows:

1. **Scope of Work.** The Contractor shall, perform the construction, execution and completion of the following listed complete work or improvement in full compliance with the Plans, Specifications, Standard Specifications, Supplemental Specifications, Special Provisions and contract; perform all items of work covered or stipulated in the proposal; perform all altered or extra work; and shall furnish, unless otherwise provided in the contract, all materials, implements, machinery, equipment, tools, supplies, transportation, and labor necessary to the prosecution and completion of the work or improvements:

TENNEY PARK MAINTENANCE BRIDGE CONTRACT NO. 6656

2. **Completion Date/Contract Time.** Construction work must begin within seven (7) calendar days after the date appearing on mailed written notice to do so shall have been sent to the Contractor and shall be carried on at a rate so as to secure full completion SEE SPECIAL PROVISIONS, the rate of progress and the time of completion being essential conditions of this Agreement.
3. **Contract Price.** The City shall pay to the Contractor at the times, in the manner and on the conditions set forth in said specifications, the sum of _____ (\$ _____) Dollars being the amount bid by such Contractor and which was awarded to him/her as provided by law.
4. **Wage Rates for Employees of Public Works Contractors**

General and Authorization. The Contractor shall compensate its employees at the prevailing wage rate in accordance with section 66.0903, Wis. Stats., DWD 290 of the Wisconsin Administrative Code and as hereinafter provided.

“Public Works” shall include building or work involving the erection, construction, remodeling, repairing or demolition of buildings, parking lots, highways, streets, bridges, sidewalks, street lighting, traffic signals, sanitary sewers, water mains and appurtenances, storm sewers, and the grading and landscaping of public lands.

“Building or work” includes construction activity as distinguished from manufacturing, furnishing of materials, or servicing and maintenance work, except for the delivery of mineral aggregate such as sand, gravel, bituminous asphaltic concrete or stone which is incorporated into the work under contract with the City by depositing the material directly in final place from transporting vehicle.

“Erection, construction, remodeling, repairing” means all types of work done on a particular building or work at the site thereof in the construction or development of the project, including without limitation, erecting, construction, remodeling, repairing, altering, painting, and decorating, the transporting of materials and supplies to or from the building or work done by the employees of the Contractor, Subcontractor, or Agent thereof, and the manufacturing or furnishing of materials, articles, supplies or equipment on the site of the building or work, by persons employed by the Contractor, Subcontractor, or Agent thereof.

“Employees working on the project” means laborers, workers, and mechanics employed directly upon the site of work.

“Laborers, Workers, and Mechanics” include preapprentices, helpers, trainees, learners and properly registered and indentured apprentices but exclude clerical, supervisory, and other personnel not performing manual labor.

Establishment of Wage Rates. The Department of Public Works shall periodically obtain a current schedule of prevailing wage rates from DWD. The schedule shall be used to establish the City of Madison Prevailing Wage Rate Schedule for Public Works Construction (prevailing wage rate). The Department of Public Works may include known increases to the prevailing wage rate which can be documented and are to occur on a future specific date. The prevailing wage rate shall be included in public works contracts subsequently negotiated or solicited by the City. Except for known increases contained within the schedule, the prevailing wage rate shall not change during the contract. The approved wage rate is attached hereto.

Workforce Profile. The Contractor shall, at the time of signature of the contract, notify the City Engineer in writing of the names and classifications of all the employees of the Contractor, Subcontractors, and Agents proposed for the work. In the alternative, the Contractor shall submit in writing the classifications of all the employees of the Contractor, Subcontractors and Agents and the total number of hours estimated in each classification for the work. This workforce profile(s) shall be reviewed by the City Engineer who may, within ten (10) days, object to the workforce profile(s) as not being reflective of that which would be required for the work. The Contractor may request that the workforce profile, or a portion of the workforce profile, be submitted after the signature of the contract but at least ten (10) days prior to the work commencing. Any costs or time loss resulting from modifications to the workforce profile as a result of the City Engineer’s objections shall be the responsibility of the Contractor.

Payrolls and Records. The Contractor shall keep weekly payroll records setting forth the name, address, telephone number, classification, wage rate and fringe benefit package of all the employees who work on the contract, including the employees of the Contractor’s subcontractors and agents. Such weekly payroll records must include the required information for all City contracts and all other contracts on which the employee worked during the week in which the employee worked on the contract. The Contractor shall also keep records of the individual time each employee worked on the project and for each day of the project. Such records shall also set forth the total number of hours of overtime credited to each such employee for each day and week and the amount of overtime pay received in that week. The records shall set forth the full weekly wages earned by each employee and the actual hourly wage paid to the employee.

The Contractor shall submit the weekly payroll records, including the records of the Contractor’s subcontractors and agents, to the City Engineer for every week that work is being done on the contract. The submittal shall be within twenty-one (21) calendar days of the end of the Contractor’s weekly pay period.

Employees shall receive the full amounts accrued at the time of the payment, computed at rates not less than those stated in the prevailing wage rate and each employee's rate shall be determined by the work that is done within the trade or occupation classification which should be properly assigned to the employee.

An employee's classification shall not be changed to a classification of a lesser rate during the contract. If, during the term of the contract, an employee works in a higher pay classification than the one which was previously properly assigned to the employee, then that employee shall be considered to be in the higher pay classification for the balance of the contract, receive the appropriate higher rate of pay, and she/he shall not receive a lesser rate during the balance of the contract. For purposes of clarification, it is noted that there is a distinct difference between working in a different classification with higher pay and doing work within a classification that has varying rates of pay which are determined by the type of work that is done within the classification. For example, the classification "Operating Engineer" provides for different rates of pay for various classes of work and the Employer shall compensate an employee classified as an "Operating Engineer" based on the highest class of work that is done in one day. Therefore, an "Operating Engineer's" rate may vary on a day to day basis depending on the type of work that is done, but it will never be less than the base rate of an "Operating Engineer". Also, as a matter of clarification, it is recognized that an employee may work in a higher paying classification merely by chance and without prior intention, calculation or design. If such is the case and the performance of the work is truly incidental and the occurrence is infrequent, inconsequential and does not serve to undermine the single classification principle herein, then it may not be required that the employee be considered to be in the higher pay classification and receive the higher rate of pay for the duration of the contract. However, the Contractor is not precluded or prevented from paying the higher rate for the limited time that an employee performs work that is outside of the employee's proper classification.

Questions regarding an employee's classification, rate of pay or rate of pay within a classification, shall be resolved by reference to the established practice that predominates in the industry and on which the trade or occupation rate/classification is based. Rate of pay and classification disputes shall be resolved by relying upon practices established by collective bargaining agreements and guidelines used in such determination by appropriate recognized trade unions operating within the City of Madison.

The Contractor, its Subcontractors and Agents shall submit to interrogation regarding compliance with the provisions of this ordinance.

Mulcting of the employees by the Contractor, Subcontractor, and Agents on Public Works contracts, such as by kickbacks or other devices, is prohibited. The normal rate of wage of the employees of the Contractor, Subcontractor, and Agents shall not be reduced or otherwise diminished as a result of payment of the prevailing wage rate on a public works contract.

Hourly contributions. Hourly contributions shall be determined in accordance with the prevailing wage rate and with DWD. 290.01(10), Wis. Admin. Code.

Apprentices and Subjourneypersons. Apprentices and subjourneypersons performing work on the project shall be compensated in accordance with the prevailing wage rate and with DWD 290.02, and 290.025, respectively, Wis. Admin. Code.

Straight Time Wages. The Contractor may pay straight time wages as determined by the prevailing wage rate and DWD 290.04, Wis. Admin. Code.

Overtime Wages. The Contractor shall pay overtime wages as required by the prevailing wage rate and DWD 290.05, Wis. Admin. Code.

Posting of Wage Rates and Hours. A clearly legible copy of the prevailing wage rate, together with the provisions of Sec. 66.0903(10)(a) and (11)(a), Wis. Stats., shall be kept posted in at least one conspicuous and easily accessible place at the project site by the Contractor and such notice shall remain posted during the full time any laborers, workers or mechanics are employed on the contract.

Evidence of Compliance by Contractor. Upon completion of the contract, the Contractor shall file with the Department of Public Works an affidavit stating:

- a. That the Contractor has complied fully with the provisions and requirements of Sec. 66.0903(3), Wis. Stats., and Chapter DWD 290, Wis. Admin. Code; the Contractor has received evidence of compliance from each of the agents and subcontractors; and the names and addresses of all of the subcontractors and agents who worked on the contract.
- b. That full and accurate records have been kept, which clearly indicate the name and trade or occupation of every laborer, worker or mechanic employed by the Contractor in connection with work on the project. The records shall show the number of hours worked by each employee and the actual wages paid therefor; where these records will be kept and the name, address and telephone number of the person who will be responsible for keeping them. The records shall be retained and made available for a period of at least three (3) years following the completion of the project of public works and shall not be removed without prior notification to the municipality.

Evidence of Compliance by Agent and Subcontractor. Each agent and subcontractor shall file with the Contractor, upon completion of their portion of the work on the contract an affidavit stating that all the provisions of Sec. 66.0903(3), Wis. Stats., have been fully complied with and that full and accurate records have been kept, which clearly indicate the name and trade or occupation of every laborer, worker or mechanic employed by the Contractor in connection with work on the project. The records shall show the number of hours worked by each employee and the actual wages paid therefor; where these records shall be kept and the name, address and telephone number of the person who shall be responsible for keeping them. The records shall be retained and made available for a period of at least three (3) years following the completion of the project of public works and shall not be removed without prior notification to the municipality.

Failure to Comply with the Prevailing Wage Rate. If the Contractor fails to comply with the prevailing wage rate, she/he shall be in default on the contract.

5. **Affirmative Action.** In the performance of the services under this Agreement the Contractor agrees not to discriminate against any employee or applicant because of race, religion, marital status, age, color, sex, disability, national origin or ancestry, income level or source of income, arrest record or conviction record, less than honorable discharge, physical appearance, sexual orientation, political beliefs, or student status. The Contractor further agrees not to discriminate against any subcontractor or person who offers to subcontract on this contract because of race, religion, color, age, disability, sex or national origin.

The Contractor agrees that within thirty (30) days after the effective date of this agreement, the Contractor will provide to the City Affirmative Action Division certain workforce utilization statistics, using a form to be furnished by the City.

If the contract is still in effect, or if the City enters into a new agreement with the Contractor, within one year after the date on which the form was required to be provided, the Contractor will provide updated workforce information using a second form, also to be furnished by the City. The second form will be submitted to the City Affirmative Action Division no later than one year after the date on which the first form was required to be provided.

The Contractor further agrees that, for at least twelve (12) months after the effective date of this contract, it will notify the City Affirmative Action Division of each of its job openings at facilities in Dane County for which applicants not already employees of the Contractor are to be considered. The notice will include a job description, classification, qualifications and application procedures and deadlines. The Contractor agrees to interview and consider candidates referred by the Affirmative Action Division if the candidate meets the minimum qualification standards established by the Contractor, and if the referral is timely. A referral is timely if it is received by the Contractor on or before the date started in the notice.

Articles of Agreement

Article I

The Contractor shall take affirmative action in accordance with the provisions of this contract to insure that applicants are employed, and that employees are treated during employment without regard to race, religion, color, age, marital status, disability, sex or national origin and that the employer shall provide harassment free work environment for the realization of the potential of each employee. Such action shall include, but not be limited to, the following: employment, upgrading, demotion or transfer, recruitment or recruitment advertising, layoff or termination, rates of pay or other forms of compensation and selection for training including apprenticeship insofar as it is within the control of the Contractor. The Contractor agrees to post in conspicuous places available to employees and applicants notices to be provided by the City setting out the provisions of the nondiscrimination clauses in this contract.

Article II

The Contractor shall in all solicitations or advertisements for employees placed by or on behalf of the Contractor state that all qualified or qualifiable applicants will be employed without regard to race, religion, color, age, marital status, disability, sex or national origin.

Article III

The Contractor shall send to each labor union or representative of workers with which it has a collective bargaining agreement or other contract or understanding a notice to be provided by the City advising the labor union or worker's representative of the Contractor's equal employment opportunity and affirmative action commitments. Such notices shall be posted in conspicuous places available to employees and applicants for employment.

Article V

The Contractor agrees that it will comply with all provisions of the Affirmative Action Ordinance of the City of Madison, including the contract compliance requirements. The Contractor agrees to submit the model affirmative action plan for public works contractors in a form approved by the Director of Affirmative Action.

Article VI

The Contractor will maintain records as required by Section 39.02(9)(f) of the Madison General Ordinances and will provide the City Affirmative Action Division with access to such records and to persons who have relevant and necessary information, as provided in Section 39.02(9)(f). The City agrees to keep all such records confidential, except to the extent that public inspection is required by law.

Article VII

In the event of the Contractor's or subcontractor's failure to comply with the Equal Employment Opportunity and Affirmative Action Provisions of this contract or Section 39.03 and 39.02 of the Madison General Ordinances, it is agreed that the City at its option may do any or all of the following:

1. Cancel, terminate or suspend this Contract in whole or in part.
2. Declare the Contractor ineligible for further City contracts until the Affirmative Action requirements are met.
3. Recover on behalf of the City from the prime Contractor 0.5 percent of the contract award price for each week that such party fails or refuses to comply, in the nature of liquidated damages, but not to exceed a total of five percent (5%) of the contract price, or five thousand dollars (\$5,000), whichever is less. Under public works contracts, if a subcontractor is in noncompliance, the City may recover liquidated damages from the prime Contractor in the manner described above. The preceding sentence shall not be construed to prohibit a prime Contractor from recovering the amount of such damage from the non-complying subcontractor.

Article VIII

The Contractor shall include the above provisions of this contract in every subcontract so that such provisions will be binding upon each subcontractor. The Contractor shall take such action with respect to any subcontractor as necessary to enforce such provisions, including sanctions provided for noncompliance.

Article IX

The Contractor shall allow the maximum feasible opportunity to small business enterprises to compete for any subcontracts entered into pursuant to this contract.

**TENNEY PARK MAINTENANCE BRIDGE
CONTRACT NO. 6656**

IN WITNESS WHEREOF, the Contractor has hereunto set his/her hand and seal and the City has caused these presents to be sealed with its corporate seal and to be subscribed by its Mayor and City Clerk the day and year first above written.

Countersigned:

Company Name

Witness Date

President Date

Witness Date

Secretary Date

CITY OF MADISON, WISCONSIN

Provisions have been made to pay the liability that will accrue under this contract.

Approved as to form:

Finance Director

City Attorney

Signed this _____ day of _____, 20_____

Witness

Mayor Date

Witness

City Clerk Date

SECTION H: PAYMENT AND PERFORMANCE BOND

KNOW ALL MEN BY THESE PRESENTS, that we _____
as principal, and _____
Company of _____ as surety, are held and firmly bound unto the City of
Madison, Wisconsin, in the sum of _____ (\$ _____) Dollars, lawful money of the
United States, for the payment of which sum to the City of Madison, we hereby bind ourselves and our
respective executors and administrators firmly by these presents.

The condition of this Bond is such that if the above bounden shall on his/her part fully and faithfully
perform all of the terms of the Contract entered into between him/herself and the City of Madison for the
construction of:

**TENNEY PARK MAINTENANCE BRIDGE
CONTRACT NO. 6656**

in Madison, Wisconsin, and shall pay all claims for labor performed and material furnished in the
prosecution of said work, and save the City harmless from all claims for damages because of negligence
in the prosecution of said work, and shall save harmless the said City from all claims for compensation
(under Chapter 102, Wisconsin Statutes) of employees and employees of subcontractor, then this Bond is
to be void, otherwise of full force, virtue and effect.

Signed and sealed this _____ day of _____,

Countersigned:

Company Name (Principal)

Witness

President Seal

Secretary

Approved as to form:

Surety Seal
 Salary Employee Commission

City Attorney

By _____
Attorney-in-Fact

This certifies that I have been duly licensed as an agent for the above company in Wisconsin under
License No. _____ for the year 20_____, and appointed as attorney-in-fact with
authority to execute this payment and performance bond which power of attorney has not been revoked.

Date

Agent

MINIMUM WAGE SCALE

FOR

PUBLIC WORKS IMPROVEMENTS

APPROVED BY: BOARD OF PUBLIC WORKS

MADISON, WISCONSIN

February 7, 2012

The attached "Prevailing Wage Rate Determination: (Pages 1 through 30), issued February 7, 2012, is hereby approved as the Minimum Wage Scale of the City of Madison.

State of Wisconsin
Department of Workforce Development
Equal Rights Division

DEPARTMENTAL ORDER

ISSUE DATE: 1/13/2012

PROJECT:

ALL PUBLIC WORKS PROJECTS UNDER SEC. 66.0903, STATS.-CITY OF MADISON
MADISON CITY, DANE COUNTY, WI
Determination No. 201200105

PROJECT OWNER:

ROBERT F. PHILLIPS, CITY ENGINEER
CITY OF MADISON-ENGINEERING
210 MARTIN L KING JR BLVD, RM 115
MADISON, WI 53703

REQUESTER:

ROBERT F. PHILLIPS, CITY ENGINEER
CITY OF MADISON-ENGINEERING
210 MARTIN L KING JR BLVD, RM 115
MADISON, WI 53703

ADDITIONAL CONTACT:

NORMAN DAVIS, CONTRACT COMPLIANCE
CITY OF MADISON-DEPT OF CIVIL RTS-AA DIV
210 MARTIN L KING JR BLVD, RM 523
MADISON, WI 537033342

The department received an application for prevailing wage rate determination for the above-captioned project. The department conducted a survey to determine the prevailing wage rate for the trade(s) or occupation(s) needed to complete the project. The survey's findings appear in the attached project determination.

If you believe that the wage rate for any trade or occupation does not accurately reflect the prevailing wage rate in the city, village or town where the project is located, you may ask the department to conduct an administrative review of such wage rate. You must submit this request in writing within 30 days from the date indicated above. Additionally, your request must include wage rate information from at least three similar projects in the city, village or town where the proposed project is located and on which some work has been performed by the contested trade(s) during the current survey period and was previously considered by the department in issuing the attached determination. See DWD 290.10 of the Wisconsin Administrative Code and either s. 66.0903(3)(br), s. 66.0904(4)(e), or s. 103.49(3)(c), Stats., for a complete explanation of the administrative review process.

Enclosures

It is hereby ordered that the prevailing wage rates set forth in the attached project determination shall only be applicable to the above referenced project. This order is a **FINAL ORDER** of the department unless a timely request for an administrative review is filed with the department.

ISSUED BY:

Equal Rights Division
Labor Standards Bureau
Construction Wage Standards Section
PO Box 8928 Madison, WI 53708-8928
(608)266-6861

Web Site: <http://dwd.wisconsin.gov/er/>

PREVAILING WAGE RATE DETERMINATION

Issued by the State of Wisconsin
Department of Workforce Development
Pursuant to s. 66.0903, Wis. Stats.
Issued On: 1/13/2012

DETERMINATION NUMBER: 201200105

EXPIRATION DATE: Prime Contracts MUST Be Awarded or Negotiated On Or Before 12/31/2012. If NOT, You MUST Reapply.

PROJECT NAME: ALL PUBLIC WORKS PROJECTS UNDER SEC 66.0903, STATS.-CITY OF MADISON

PROJECT LOCATION: MADISON CITY, DANE COUNTY, WI

CONTRACTING AGENCY: CITY OF MADISON-ENGINEERING

CLASSIFICATION:	Contractors are responsible for correctly classifying their workers. Either call the Department of Workforce Development (DWD) with trade or classification questions or consult DWD's Dictionary of Occupational Classifications & Work Descriptions on the DWD website at: dwd.wisconsin.gov/er/prevailing_wage_rate/Dictionary/dictionary_main.htm .
OVERTIME:	Time and one-half must be paid for all hours worked: <ul style="list-style-type: none">- over 10 hours per day on prevailing wage projects- over 40 hours per calendar week- Saturday and Sunday- on all of the following holidays: January 1; the last Monday in May; July 4; the 1st Monday in September; the 4th Thursday in November; December 25;- The day before if January 1, July 4 or December 25 falls on a Saturday;- The day following if January 1, July 4 or December 25 falls on a Sunday. Apply the time and one-half overtime calculation to whichever is higher between the Hourly Basic Rate listed on this project determination or the employee's regular hourly rate of pay. Add any applicable Premium or DOT Premium to the Hourly Basic Rate before calculating overtime. A DOT Premium (discussed below) may supersede this time and one-half requirement.
FUTURE INCREASE:	When a specific trade or occupation requires a future increase, you MUST add the full hourly increase to the "TOTAL" on the effective date(s) indicated for the specific trade or occupation.
PREMIUM PAY:	If indicated for a specific trade or occupation, the full amount of such pay MUST be added to the "HOURLY BASIC RATE OF PAY" indicated for such trade or occupation, whenever such pay is applicable.
DOT PREMIUM:	This premium only applies to highway and bridge projects owned by the Wisconsin Department of Transportation and to the project type heading "Airport Pavement or State Highway Construction." DO NOT apply the premium calculation under any other project type on this determination.
APPRENTICES:	Pay apprentices a percentage of the applicable journey person's hourly basic rate of pay and hourly fringe benefit contributions specified in this determination. Obtain the appropriate percentage from each apprentice's contract or indenture.
SUBJOURNEY:	Subjourney wage rates may be available for some of the trades or occupations indicated below with the exception of laborers, truck drivers and heavy equipment operators. Any employer interested in using a subjourney classification on this project MUST complete Form ERD-10880 and request the applicable wage rate from the Department of Workforce Development PRIOR to using the subjourney worker on this project.

This document **MUST BE POSTED** by the **CONTRACTING AGENCY** in at least one conspicuous and easily accessible place on **the site of the project**. A local governmental unit may post this document at the place normally used to post public notices if there is no common site on the project. This document **MUST** remain posted during the entire time any worker is employed on the project and **MUST** be physically incorporated into the specifications and all contracts and subcontracts. If you have any questions, please write to the Equal Rights Division, Labor Standards Bureau, P.O. Box 8928, Madison, Wisconsin 53708 or call (608) 266-6861.

The following statutory provisions apply to local governmental unit projects of public works and are set forth below pursuant to the requirements of s. 66.0903(8), Stats.

s. 66.0903 (1) (f) & s. 103.49 (1) (c) "PREVAILING HOURS OF LABOR" for any trade or occupation in any area means 10 hours per day and 40 hours per week and may not include any hours worked on a Saturday or Sunday or on any of the following holidays:

1. January 1.
2. The last Monday in May.
3. July 4.
4. The first Monday in September.
5. The 4th Thursday in November.
6. December 25.
7. The day before if January 1, July 4 or December 25 falls on a Saturday.
8. The day following if January 1, July 4 or December 25 falls on a Sunday.

s. 66.0903 (10) RECORDS; INSPECTION; ENFORCEMENT.

(a) Each contractor, subcontractor, or contractor's or subcontractor's agent performing work on a project of public works that is subject to this section shall keep full and accurate records clearly indicating the name and trade or occupation of every person performing the work described in sub. (4) and an accurate record of the number of hours worked by each of those persons and the actual wages paid for the hours worked.

s. 66.0903 (11) LIABILITY AND PENALTIES.

(a) 1. Any contractor, subcontractor, or contractor's or subcontractor's agent who fails to pay the prevailing wage rate determined by the department under sub. (3) or who pays less than 1.5 times the hourly basic rate of pay for all hours worked in excess of the prevailing hours of labor is liable to any affected employee in the amount of his or her unpaid wages or his or her unpaid overtime compensation and in an additional amount as liquidated damages as provided under subd. 2., 3., whichever is applicable.

2. If the department determines upon inspection under sub. (10) (b) or (c) that a contractor, subcontractor, or contractor's or subcontractor's agent has failed to pay the prevailing wage rate determined by the department under sub. (3) or has paid less than 1.5 times the hourly basic rate of pay for all hours worked in excess of the prevailing hours of labor, the department shall order the contractor to pay to any affected employee the amount of his or her unpaid wages or his or her unpaid overtime compensation and an additional amount equal to 100 percent of the amount of those unpaid wages or that unpaid overtime compensation as liquidated damages within a period specified by the department in the order.

3. In addition to or in lieu of recovering the liability specified in subd. 1. as provided in subd. 2., any employee for and in behalf of that employee and other employees similarly situated may commence an action to recover that liability in any court of competent jurisdiction. If the court finds that a contractor, subcontractor, or contractor's or subcontractor's agent has failed to pay the prevailing wage rate determined by the department under sub. (3) or has paid less than 1.5 times the hourly basic rate of pay for all hours worked in excess of the prevailing hours of labor, the court shall order the contractor, subcontractor, or agent to pay to any affected employee the amount of his or her unpaid wages or his or her unpaid overtime compensation and an additional amount equal to 100 percent of the amount of those unpaid wages or that unpaid overtime compensation as liquidated damages.

5. No employee may be a party plaintiff to an action under subd. 3. unless the employee consents in writing to become a party and the consent is filed in the court in which the action is brought. Notwithstanding s. 814.04 (1), the court shall, in addition to any judgment awarded to the plaintiff, allow reasonable attorney fees and costs to be paid by the defendant.

BUILDING OR HEAVY CONSTRUCTION

Includes sheltered enclosures with walk-in access for the purpose of housing persons, employees, machinery, equipment or supplies and non-sheltered work such as canals, dams, dikes, reservoirs, storage tanks, etc. A sheltered enclosure need not be "habitable" in order to be considered a building. The installation of machinery and/or equipment, both above and below grade level, does not change a project's character as a building. On-site grading, utility work and landscaping are included within this definition. Residential buildings of four (4) stories or less, agricultural buildings, parking lots and driveways are NOT included within this definition.

SKILLED TRADES

Fringe Benefits Must Be Paid On <u>All</u> Hours Worked		HOURLY BASIC RATE OF PAY	HOURLY FRINGE BENEFITS	TOTAL
CODE	TRADE OR OCCUPATION	\$	\$	\$
101	Acoustic Ceiling Tile Installer	29.06	15.16	44.22
102	Boilermaker	31.09	23.75	54.84
103	Bricklayer, Blocklayer or Stonemason Future Increase(s): Add \$.50/hr on 6/1/2012; Add \$.80 on 6/1/2013 Premium Increase(s): DOT PREMIUM: Pay two times the hourly basic rate on Sunday, New Year's Day, Memorial Day, Independence Day, Labor Day, Thanksgiving Day & Christmas Day.	32.26	16.60	48.86
104	Cabinet Installer	29.06	15.16	44.22
105	Carpenter	29.06	15.16	44.22
106	Carpet Layer or Soft Floor Coverer	29.06	15.16	44.22
107	Cement Finisher	32.03	15.13	47.16
108	Drywall Taper or Finisher	26.10	13.65	39.75
109	Electrician Future Increase(s): Add \$.50/hr on 6/1/2012. Premium Increase(s): DOT PREMIUM: Pay two times the hourly basic rate on Sunday, New Year's Day, Memorial Day, Independence Day, Labor Day, Thanksgiving Day & Christmas Day.	32.55	18.68	51.23
110	Elevator Constructor	43.79	25.48	69.27
111	Fence Erector	25.50	0.26	25.76
112	Fire Sprinkler Fitter	36.39	16.75	53.14
113	Glazier	36.23	11.22	47.45
114	Heat or Frost Insulator	33.28	22.51	55.79
115	Insulator (Batt or Blown)	23.62	11.55	35.17
116	Ironworker	30.90	19.11	50.01
117	Lather	29.06	15.16	44.22

Fringe Benefits Must Be Paid On <u>All</u> Hours Worked				
<u>CODE</u>	<u>TRADE OR OCCUPATION</u>	<u>HOURLY BASIC RATE OF PAY</u> \$	<u>HOURLY FRINGE BENEFITS</u> \$	<u>TOTAL</u> \$
118	Line Constructor (Electrical)	35.97	18.08	54.05
119	Marble Finisher	31.16	16.27	47.43
120	Marble Mason	32.66	16.20	48.86
121	Metal Building Erector	22.00	4.11	26.11
122	Millwright	30.66	15.21	45.87
123	Overhead Door Installer	18.00	4.86	22.86
124	Painter	25.65	14.11	39.76
125	Pavement Marking Operator	26.00	0.00	26.00
126	Piledriver	29.56	15.16	44.72
127	Pipeline Fuser or Welder (Gas or Utility)	29.54	18.84	48.38
129	Plasterer	29.03	15.16	44.19
130	Plumber	36.20	15.02	51.22
132	Refrigeration Mechanic Future Increase(s); Add \$.85/hr on 12/1/11; Add \$.90/hr on 6/1/12; Add \$.85/hr on 12/1/12.	40.35	16.21	56.56
133	Rofer or Waterproofer	28.06	0.00	28.06
134	Sheet Metal Worker	34.23	20.19	54.42
135	Steamfitter Future Increase(s); Add \$.85/hr on 12/1/11; Add \$.90/hr on 6/1/12; Add \$.85/hr on 12/1/12.	40.35	16.21	56.56
137	Teledata Technician or Installer	21.26	6.99	28.25
138	Temperature Control Installer	32.55	18.68	51.23
139	Terrazzo Finisher	18.00	5.35	23.35
140	Terrazzo Mechanic	31.16	16.27	47.43
141	Tile Finisher Future Increase(s); Add \$.50/hr on 6/1/2012; Add \$.80/hr on 6/1/2013.	23.77	16.00	39.77
142	Tile Setter Future Increase(s); Add \$.50/hr on 6/1/2012; Add \$.80/hr on 6/1/2013.	29.71	16.00	45.71
143	Tuckpointer, Caulker or Cleaner	22.00	9.75	31.75
144	Underwater Diver (Except on Great Lakes)	36.20	18.81	55.01
146	Well Driller or Pump Installer	25.32	15.30	40.62

Fringe Benefits Must Be Paid On <u>All</u> Hours Worked		HOURLY BASIC RATE OF PAY	HOURLY FRINGE BENEFITS	TOTAL
CODE	TRADE OR OCCUPATION	\$	\$	\$
147	Siding Installer	16.74	2.58	19.32
150	Heavy Equipment Operator - ELECTRICAL LINE CONSTRUCTION ONLY	32.37	16.48	48.85
151	Light Equipment Operator -ELECTRICAL LINE CONSTRUCTION ONLY	28.78	15.16	43.94
152	Heavy Truck Driver - ELECTRICAL LINE CONSTRUCTION ONLY	17.80	9.00	26.80
153	Light Truck Driver - ELECTRICAL LINE CONSTRUCTION ONLY	23.38	12.48	35.86
154	Groundman - ELECTRICAL LINE CONSTRUCTION ONLY	21.30	10.97	32.27

TRUCK DRIVERS

Fringe Benefits Must Be Paid On <u>All</u> Hours Worked		HOURLY BASIC RATE OF PAY	HOURLY FRINGE BENEFITS	TOTAL
CODE	TRADE OR OCCUPATION	\$	\$	\$
201	Single Axle or Two Axle	18.00	6.98	24.98
203	Three or More Axle Future Increase(s): Add \$1.57/hr on 6/1/2012.	18.00	13.83	31.83
204	Articulated, Euclid, Dumptor, Off Road Material Hauler Future Increase(s): Add \$1/hr on 6/3/2012; Add \$1/hr on 6/2/2013.	31.89	17.98	49.87
205	Pavement Marking Vehicle	19.25	10.84	30.09
207	Truck Mechanic	18.00	13.68	31.68

LABORERS

Fringe Benefits Must Be Paid On <u>All</u> Hours Worked		HOURLY BASIC RATE OF PAY	HOURLY FRINGE BENEFITS	TOTAL
CODE	TRADE OR OCCUPATION	\$	\$	\$
301	General Laborer Future Increase(s): Add \$.50/hr. on 06/04/2012; Add \$.75/hr. on 06/03/2013 Premium Increase(s): Add \$1.00/hr for certified welder; Add \$.25/hr for mason tender	24.14	13.45	37.59
302	Asbestos Abatement Worker	23.96	12.88	36.84
303	Landscaper	17.00	6.36	23.36
310	Gas or Utility Pipeline Laborer (Other Than Sewer and Water)	20.39	12.20	32.59
311	Fiber Optic Laborer (Outside, Other Than Concrete Encased)	16.51	0.00	16.51
314	Railroad Track Laborer	14.00	4.77	18.77

**HEAVY EQUIPMENT OPERATORS
SITE PREPARATION, UTILITY OR LANDSCAPING WORK ONLY**

Fringe Benefits Must Be Paid On All Hours Worked

<u>CODE</u>	<u>TRADE OR OCCUPATION</u>	<u>HOURLY BASIC RATE OF PAY</u> \$	<u>HOURLY FRINGE BENEFITS</u> \$	<u>TOTAL</u> \$
501	Air Track, Rotary or Percussion Drilling Machine &/or Hammers, Blaster; Asphalt Milling Machine; Boring Machine (Directional, Horizontal or Vertical); Backhoe (Track Type) Having a Mfg'r's Rated Capacity of 130,000 Lbs. or Over; Backhoe (Track Type) Having a Mfg'r's Rated Capacity of Under 130,000 Lbs., Backhoe (Mini, 15,000 Lbs. & Under); Bulldozer or Endloader (Over 40 hp); Compactor (Self-Propelled 85 Ft Total Drum Width & Over, or Tractor Mounted, Towed & Light Equipment); Concrete Batch Plant, Batch Hopper; Concrete Breaker (Large, Auto, Vibratory/Sonic, Manual or Remote); Crane, Shovel, Dragline, Clamshells; Forklift (Machinery Moving or Steel Erection, 25 Ft & Over); Gradall (Cruz-Aire Type); Grader or Motor Patrol; Master Mechanic; Mechanic or Welder; Robotic Tool Carrier (With or Without Attachments); Scraper (Self Propelled or Tractor Drawn) 5 cu yds or More Capacity; Tractor or Truck Mounted Hydraulic Backhoe; Tractor or Truck Mounted Hydraulic Crane (10 Tons or Under); Tractor (Scraper, Dozer, Pusher, Loader); Trencher (Wheel Type or Chain Type Having Over 8 Inch Bucket). Future Increase(s): Add \$1/hr on 6/3/2012; Add \$1/hr on 6/2/2013.	32.42	17.98	50.40
502	Backfiller; Broom or Sweeper; Bulldozer or Endloader (Under 40 hp); Environmental Burner; Forestry Equipment, Timbco, Tree Shear, Tub Grinder, Processor; Jeep Digger; Screenshot (Milling Machine); Skid Rig; Straddle Carrier or Travel Lift; Stump Chipper; Trencher (Wheel Type or Chain Type Having 8 Inch Bucket & Under).	31.89	14.44	46.33
503	Air Compressor (&/or 400 CFM or Over); Augers (Vertical & Horizontal); Compactor (Self-Propelled 84 Ft Total Drum Width & Under, or Tractor Mounted, Towed & Light Equipment); Crusher, Screening or Wash Plant; Farm or Industrial Type Tractor; Forklift; Generator (&/or 150 KW or Over); Greaser; High Pressure Utility Locating Machine (Daylighting Machine); Mulcher; Oiler; Post Hole Digger or Driver; Pump (3 Inch or Over) or Well Points; Refrigeration Plant or Freeze Machine; Rock, Stone Breaker; Skid Steer Loader (With or Without Attachments); Vibratory Hammer or Extractor, Power Pack. Future Increase(s): Add \$1/hr on 6/3/2012; Add \$1/hr on 6/2/2013.	31.89	17.98	49.87
504	Work Performed on the Great Lakes Including Diver; Wet Tender or Hydraulic Dredge Engineer.	36.20	18.81	55.01
505	Work Performed on the Great Lakes Including Crane or Backhoe Operator; Assistant Hydraulic Dredge Engineer; Hydraulic Dredge Leverman or Diver's Tender; Mechanic or Welder; 70 Ton & Over Tug Operator. Premium Increase(s): Add \$.50/hr for friction crane, lattice boom or crane certification (CCO).	37.45	19.45	56.90

Fringe Benefits Must Be Paid On All Hours Worked

<u>CODE</u>	<u>TRADE OR OCCUPATION</u>	<u>HOURLY BASIC RATE OF PAY</u> \$	<u>HOURLY FRINGE BENEFITS</u> \$	<u>TOTAL</u> \$
506	Work Performed on the Great Lakes Including Deck Equipment Operator or Machineryman (Maintains Cranes Over 50 Tons or Backhoes 115,000 Lbs. or More); Tug, Launch or Loader, Dozer or Like Equipment When Operated on a Barge, Breakwater Wall, Slip, Dock or Scow, Deck Machinery.	26.80	18.52	45.32
507	Work Performed on the Great Lakes Including Deck Equipment Operator, Machineryman or Fireman (Operates 4 Units or More or Maintains Cranes 50 Tons or Under or Backhoes 115,000 Lbs. or Under); Deck Hand, Deck Engineer or Assistant Tug Operator; Off Road Trucks - Great Lakes ONLY.	27.75	19.15	46.90

**HEAVY EQUIPMENT OPERATORS
EXCLUDING SITE PREPARATION, UTILITY, PAVING LANDSCAPING WORK**

Fringe Benefits Must Be Paid On All Hours Worked

<u>CODE</u>	<u>TRADE OR OCCUPATION</u>	<u>HOURLY BASIC RATE OF PAY</u> \$	<u>HOURLY FRINGE BENEFITS</u> \$	<u>TOTAL</u> \$
508	Boring Machine (Directional); Crane, Tower Crane, Pedestal Tower or Derrick, With or Without Attachments, With a Lifting Capacity of Over 100 Tons, Self-Erecting Tower Crane With a Lifting Capacity of Over 4,000 Lbs., Crane With Boom Dollies; Crane, Tower Crane, Pedestal Tower or Derrick, With Boom, Leads &/or Jib Lengths Measuring 176 Ft or Over; Master Mechanic. Future Increase(s): Add \$1/hr on 6/3/2012; Add \$1/hr on 6/2/2013. Premium Increase(s): Add \$.50/hr at 200 ton; Add \$1.00/hr. at 300 ton; Add \$1.50/hr at 400 ton; Add \$2.00/hr at 500 ton.	34.62	17.98	52.60
509	Backhoe (Track Type) Having a Mfgr's Rated Capacity of 130,000 Lbs. or Over; Boring Machine (Horizontal or Vertical); Caisson Rig; Crane, Tower Crane, Portable Tower, Pedestal Tower or Derrick, With or Without Attachments, With a Lifting Capacity of 100 Tons or Under, Self-Erecting Tower Crane With A Lifting Capacity Of 4,000 Lbs. & Under; Crane, Tower Crane, Portable Tower, Pedestal Tower or Derrick, With Boom, Leads &/or Jib Lengths Measuring 175 Ft or Under; Pile Driver; Versi Lifts, Tri-Lifts & Gantrys (20,000 Lbs. & Over). Future Increase(s): Add \$1/hr on 6/3/2012; Add \$1/hr on 6/2/2013. Premium Increase(s): Add \$.25/hr for cranes with lifting capacity of 45 ton or over.	33.62	17.98	51.60
510	Backhoe (Track Type) Having a Mfgr.'s Rated Capacity of Under 130,000 Lbs., Backhoe (Mini, 15,000 Lbs. & Under); Concrete Bump Cutter, Grinder, Planing or Grooving Machine; Concrete Laser/Screed; Concrete Paver (Slipform); Concrete Pump (Over 46 Meter), Concrete Conveyor (Rotec or Bidwell Type); Concrete Slipform Placer Curb & Gutter Machine; Concrete Spreader & Distributor; Dredge (NOT Performing Work on the Great Lakes); Forklift (Machinery Moving or Steel Erection, 25 Ft & Over); Gradall (Cruz-Aire Type); Hydro-Blaster (10,000 PSI or Over); Milling Machine; Skid Rig; Traveling Crane (Bridge Type). Future Increase(s): Add \$1/hr on 6/3/2012; Add \$1/hr on 6/2/2013.	32.42	17.98	50.40

Fringe Benefits Must Be Paid On <u>All</u> Hours Worked		HOURLY BASIC RATE OF PAY	HOURLY FRINGE BENEFITS	TOTAL
CODE	TRADE OR OCCUPATION	\$	\$	\$
511	Air, Track, Rotary or Percussion Drilling Machine &/or Hammers, Blaster; Bulldozer or Endloader (Over 40 hp); Compactor (Self-Propelled 85 Ft Total Drum Width & Over, or Tractor Mounted, Towed & Light Equipment); Concrete Pump (46 Meter & Under), Concrete Conveyor (Rotec or Bidwell Type); Crane (Carry Deck, Mini) or Truck Mounted Hydraulic Crane (10 Tons or Under); Environmental Burner; Gantrys (Under 20,000 Lbs.); Grader or Motor Patrol; High Pressure Utility Locating Machine (Daylighting Machine); Manhoist; Material or Stack Hoist; Mechanic or Welder; Railroad Track Rail Leveling Machine, Tie Placer, Extractor, Tamper, Stone Leveler or Rehabilitation Equipment; Roller (Over 5 Ton); Scraper (Self Propelled or Tractor Drawn) 5 cu yd or More Capacity; Screed (Milling Machine); Sideboom; Straddle Carrier or Travel Lift; Tining or Curing Machine; Tractor (Scraper, Dozer, Pusher, Loader); Tractor or Truck Mounted Hydraulic Backhoe; Tractor or Truck Mounted Hydraulic Crane (10 Tons or Under); Trencher (Wheel Type or Chain Type Having Over 8-Inch Bucket). Future Increase(s): Add \$1/hr on 6/3/2012; Add \$1/hr on 6/2/2013.	31.89	17.98	49.87
512	Backfiller; Broom or Sweeper; Bulldozer or Endloader (Under 40 hp); Compactor (Self-Propelled 84 Ft Total Drum Width & Under, or Tractor Mounted, Towed & Light Equipment); Concrete Batch Plant, Batch Hopper; Concrete Breaker (Large, Auto, Vibratory/Sonic, Manual or Remote); Concrete Conveyor System; Concrete Finishing Machine (Road Type); Fireman (Pile Driver & Derrick NOT Performing Work on the Great Lakes); Grout Pump; Hoist (Tugger, Automatic); Industrial Locomotives; Jeep Digger; Lift Slab Machine; Mulcher; Robotic Tool Carrier (With or Without Attachments); Roller (Rubber Tire, 5 Ton or Under); Screw or Gypsum Pumps; Stabilizing or Concrete Mixer (Self-Propelled or 14S or Over); Stump Chipper; Trencher (Wheel Type or Chain Type Having 8-Inch Bucket & Under); Winches & A-Frames.	35.59	19.10	54.69
513	Air Compressor (&/or 400 CFM or Over); Air, Electric or Hydraulic Jacking System; Augers (Vertical & Horizontal); Boatmen (NOT Performing Work on the Great Lakes); Boiler (Temporary Heat); Crusher, Screening or Wash Plant; Elevator; Farm or Industrial Type Tractor; Fireman (Asphalt Plant NOT Performing Work on the Great Lakes); Forklift; Generator (&/or 150 KW or Over); Greaser; Heaters (Mechanical); Loading Machine (Conveyor); Oiler; Post Hole Digger or Driver; Prestress Machine; Pump (3 Inch or Over) or Well Points; Refrigeration Plant or Freeze Machine; Rock, Stone Breaker; Skid Steer Loader (With or Without Attachments); Vibratory Hammer or Extractor, Power Pack. Future Increase(s): Add \$1/hr on 6/3/2012; Add \$1/hr on 6/2/2013.	29.19	17.98	47.17
514	Gas or Utility Pipeline, Except Sewer & Water (Primary Equipment). Future Increase(s): Add \$2/hr. on 1/1/2013.	34.89	19.68	54.57
515	Gas or Utility Pipeline, Except Sewer & Water (Secondary Equipment).	30.32	17.40	47.72
516	Fiber Optic Cable Equipment	22.00	7.27	29.27

SEWER, WATER OR TUNNEL CONSTRUCTION

Includes those projects that primarily involve public sewer or water distribution, transmission or collection systems and related tunnel work (excluding buildings).

SKILLED TRADES

Fringe Benefits Must Be Paid On <u>All</u> Hours Worked		HOURLY BASIC RATE OF PAY	HOURLY FRINGE BENEFITS	TOTAL
CODE	TRADE OR OCCUPATION	\$	\$	\$
103	Bricklayer, Blocklayer or Stonemason	32.66	16.20	48.86
105	Carpenter Premium Increase(s): DOT PREMIUM: Pay two times the hourly basic rate on Sunday, New Year's Day, Memorial Day, Independence Day, Labor Day, Thanksgiving Day & Christmas Day.	33.43	19.31	52.74
107	Cement Finisher Future Increase(s): Add \$1.86 on 6/1/12; Add \$1.87 on 6/1/13; Add \$1.87 on 6/1/14; Add \$1.87 on 6/1/15; Add \$1.75 on 6/1/16. Premium Increase(s): DOT PREMIUMS: 1) Pay two times the hourly basic rate on Sunday, New Year's Day, Memorial Day, Independence Day, Labor Day, Thanksgiving Day & Christmas Day. 2) Add \$1.40/hr when the Wisconsin Department of Transportation or responsible governing agency requires that work be performed at night under artificial illumination with traffic control and the work is completed after sunset and before sunrise.	30.68	15.68	46.36
109	Electrician Future Increase(s): Add \$1.40/hr on 6/1/2012. Add \$1.60/hr on 6/1/2013. Premium Increase(s): DOT PREMIUM: Pay two times the hourly basic rate on Sunday, New Year's Day, Memorial Day, Independence Day, Labor Day, Thanksgiving Day & Christmas Day.	31.54	20.95	52.49
111	Fence Erector	25.50	0.26	25.76
116	Ironworker Premium Increase(s): DOT PREMIUM: Pay two times the hourly basic rate on Sunday, New Year's Day, Memorial Day, Independence Day, Labor Day, Thanksgiving Day & Christmas Day.	31.31	22.22	53.53
118	Line Constructor (Electrical)	35.97	18.08	54.05
125	Pavement Marking Operator	26.00	0.00	26.00
126	Piledriver	29.56	15.16	44.72
130	Plumber	36.20	15.02	51.22
135	Steamfitter	39.90	15.76	55.66
137	Teledata Technician or Installer	21.26	6.99	28.25

Fringe Benefits Must Be Paid On All Hours Worked

<u>CODE</u>	<u>TRADE OR OCCUPATION</u>	<u>HOURLY BASIC RATE OF PAY</u> \$	<u>HOURLY FRINGE BENEFITS</u> \$	<u>TOTAL</u> \$
143	Tuckpointer, Caulker or Cleaner	22.00	9.75	31.75
144	Underwater Diver (Except on Great Lakes)	36.20	18.81	55.01
146	Well Driller or Pump Installer	24.22	14.80	39.02
150	Heavy Equipment Operator - ELECTRICAL LINE CONSTRUCTION ONLY	32.37	16.48	48.85
151	Light Equipment Operator -ELECTRICAL LINE CONSTRUCTION ONLY	28.78	15.16	43.94
152	Heavy Truck Driver - ELECTRICAL LINE CONSTRUCTION ONLY	17.80	9.00	26.80
153	Light Truck Driver - ELECTRICAL LINE CONSTRUCTION ONLY	23.38	12.48	35.86
154	Groundman - ELECTRICAL LINE CONSTRUCTION ONLY	21.30	10.97	32.27

TRUCK DRIVERS

Fringe Benefits Must Be Paid On All Hours Worked

<u>CODE</u>	<u>TRADE OR OCCUPATION</u>	<u>HOURLY BASIC RATE OF PAY</u> \$	<u>HOURLY FRINGE BENEFITS</u> \$	<u>TOTAL</u> \$
201	Single Axle or Two Axle	23.00	8.64	31.64
203	Three or More Axle	21.17	9.51	30.68
204	Articulated, Euclid, Dumptor, Off Road Material Hauler Future Increase(s): Add \$1.75/hr on 6/1/2012; Add \$1.85/hr on 6/1/2013. Premium Increase(s): DOT PREMIUM: Pay two times the hourly basic rate on Sunday, New Year's Day, Memorial Day, Independence Day, Labor Day, Thanksgiving Day & Christmas Day.	22.50	16.19	38.69
205	Pavement Marking Vehicle	19.25	10.84	30.09
207	Truck Mechanic	21.17	9.51	30.68

LABORERS

Fringe Benefits Must Be Paid On All Hours Worked

<u>CODE</u>	<u>TRADE OR OCCUPATION</u>	<u>HOURLY BASIC RATE OF PAY</u> \$	<u>HOURLY FRINGE BENEFITS</u> \$	<u>TOTAL</u> \$
301	General Laborer Future Increase(s): Add \$.70/hr. on 06/04/2012; Add \$.80/hr. on 06/03/2013 Premium Increase(s): Add \$.20 for blaster, bracer, manhole builder, caulker, bottomman and power tool; Add \$.55 for pipelayer; Add \$1.00 for tunnel work 0-15 lbs. compressed air; Add \$2.00 for over 15-30 lbs. compressed air; Add \$3.00 for over 30 lbs. compressed air.	25.28	13.44	38.72

Fringe Benefits Must Be Paid On All Hours Worked

<u>CODE</u>	<u>TRADE OR OCCUPATION</u>	<u>HOURLY BASIC RATE OF PAY</u> \$	<u>HOURLY FRINGE BENEFITS</u> \$	<u>TOTAL</u> \$
303	Landscaper	17.00	6.36	23.36
304	Flagperson or Traffic Control Person	12.00	17.89	29.89
311	Fiber Optic Laborer (Outside, Other Than Concrete Encased)	16.51	0.00	16.51
314	Railroad Track Laborer	14.00	4.77	18.77

**HEAVY EQUIPMENT OPERATORS
SEWER, WATER OR TUNNEL WORK**

Fringe Benefits Must Be Paid On All Hours Worked

<u>CODE</u>	<u>TRADE OR OCCUPATION</u>	<u>HOURLY BASIC RATE OF PAY</u> \$	<u>HOURLY FRINGE BENEFITS</u> \$	<u>TOTAL</u> \$
521	Backhoe (Track Type) Having a Mfgr.'s Rated Capacity of 130,000 Lbs. or Over; Caisson Rig; Crane, Tower Crane, Pedestal Tower or Derrick, With Boom, Leads &/or Jib Lengths Measuring 176 Ft or Over; Crane, Tower Crane, Pedestal Tower or Derrick, With or Without Attachments, With a Lifting Capacity of Over 100 Tons, Self-Erecting Tower Crane With a Lifting Capacity Of Over 4,000 Lbs., Crane With Boom Dollies; Master Mechanic; Pile Driver. Future Increase(s): Add \$1/hr on 6/3/2012; Add \$1/hr on 6/2/2013. Premium Increase(s): Add \$.25/hr for cranes with lifting capacity of 45 ton or over.	33.62	17.98	51.60
522	Backhoe (Track Type) Having a Mfgr.'s Rated Capacity of Under 130,000 Lbs., Backhoe (Mini, 15,000 Lbs. & Under); Boring Machine (Directional); Concrete Bump Cutter, Grinder, Planing or Grooving Machine; Concrete Laser/Screed; Concrete Paver (Slipform); Concrete Pump (Over 46 Meter), Concrete Conveyor (Rotec or Bidwell Type); Concrete Spreader & Distributor; Crane, Tower Crane, Portable Tower, Pedestal Tower or Derrick, With Boom, Leads &/or Jib Lengths Measuring 175 Ft or Under; Crane, Tower Crane, Portable Tower, Pedestal Tower or Derrick, With or Without Attachments, With a Lifting Capacity of 100 Tons or Under, Self-Erecting Tower Crane With a Lifting Capacity of 4,000 Lbs. & Under; Dredge (NOT Performing Work on the Great Lakes); Milling Machine; Skid Rig; Telehandler; Traveling Crane (Bridge Type). Future Increase(s): Add \$1/hr on 6/3/2012; Add \$1/hr on 6/2/2013.	32.42	17.98	50.40

Fringe Benefits Must Be Paid On <u>All</u> Hours Worked		HOURLY BASIC RATE OF PAY	HOURLY FRINGE BENEFITS	TOTAL
CODE	TRADE OR OCCUPATION	\$	\$	\$
523	Air Track, Rotary or Percussion Drilling Machine &/or Hammers, Blaster; Boring Machine (Horizontal or Vertical); Bulldozer or Endloader (Over 40 hp); Crane (Carry Deck, Mini) or Truck Mounted Hydraulic Crane (10 Tons or Under); Concrete Pump (46 Meter & Under), Concrete Conveyor (Rotec or Bidwell Type); Concrete Slipform Placer Curb & Gutter Machine; Gradall (Cruz-Aire Type); Grader or Motor Patrol; Hydro-Blaster (10,000 PSI or Over); Manhole; Material or Stack Hoist; Mechanic or Welder; Roller (Over 5 Ton); Scraper (Self Propelled or Tractor Drawn) 5 cu yd or More Capacity; Screenshot (Milling Machine); Sideboom; Straddle Carrier or Travel Lift; Tractor (Scraper, Dozer, Pusher, Loader); Tractor or Truck Mounted Hydraulic Backhoe; Tractor or Truck Mounted Hydraulic Crane (10 Tons or Under); Trencher (Wheel Type or Chain Type Having Over 8-Inch Bucket). Future Increase(s): Add \$1/hr on 6/3/2012; Add \$1/hr on 6/2/2013.	31.89	17.98	49.87
524	Backfiller; Broom or Sweeper; Bulldozer or Endloader (Under 40 hp); Compactor (Self-Propelled 85 Ft Total Drum Width & Over, or Tractor Mounted, Towed & Light Equipment); Concrete Batch Plant, Batch Hopper; Concrete Breaker (Large, Auto, Vibratory/Sonic, Manual or Remote); Concrete Conveyor System; Concrete Finishing Machine (Road Type); Environmental Burner; Fireman (Pile Driver & Derrick NOT Performing Work on the Great Lakes); Forestry Equipment, Timbco, Tree Shear, Tub Grinder, Processor; Hoist (Tugger, Automatic); Grout Pump; Jeep Digger; Lift Slab Machine; Mulcher; Power Subgrader; Pump (3 Inch or Over) or Well Points; Robotic Tool Carrier (With or Without Attachments); Roller (Rubber Tire, 5 Ton or Under); Screw or Gypsum Pumps; Stabilizing or Concrete Mixer (Self-Propelled or 14S or Over); Stump Chipper; Tining or Curing Machine; Trencher (Wheel Type or Chain Type Having 8-Inch Bucket & Under); Winches & A-Frames.	30.89	17.16	48.05
525	Air Compressor (&/or 400 CFM or Over); Air, Electric or Hydraulic Jacking System; Augers (Vertical & Horizontal); Compactor (Self-Propelled 84 Ft Total Drum Width & Under, or Tractor Mounted, Towed & Light Equipment); Crusher, Screening or Wash Plant; Farm or Industrial Type Tractor; Fireman (Asphalt Plant NOT Performing Work on the Great Lakes); Generator (&/or 150 KW or Over); Heaters (Mechanical); High Pressure Utility Locating Machine (Daylighting Machine); Loading Machine (Conveyor); Post Hole Digger or Driver; Refrigeration Plant or Freeze Machine; Rock, Stone Breaker; Skid Steer Loader (With or Without Attachments); Vibratory Hammer or Extractor, Power Pack. Future Increase(s): Add \$1/hr on 6/3/2012; Add \$1/hr on 6/2/2013.	29.19	17.98	47.17
526	Boiler (Temporary Heat); Forklift; Greaser; Oiler.	29.19	17.96	47.15
527	Work Performed on the Great Lakes Including Diver; Wet Tender or Hydraulic Dredge Engineer.	36.20	18.81	55.01
528	Work Performed on the Great Lakes Including 70 Ton & Over Tug Operator; Assistant Hydraulic Dredge Engineer; Crane or Backhoe Operator; Hydraulic Dredge Leverman or Diver's Tender; Mechanic or Welder.	36.20	18.81	55.01

Fringe Benefits Must Be Paid On <u>All</u> Hours Worked				
<u>CODE</u>	<u>TRADE OR OCCUPATION</u>	<u>HOURLY BASIC RATE OF PAY</u>	<u>HOURLY FRINGE BENEFITS</u>	<u>TOTAL</u>
		\$	\$	\$
529	Work Performed on the Great Lakes Including Deck Equipment Operator or Machineryman (Maintains Cranes Over 50 Tons or Backhoes 115,000 Lbs. or More); Tug, Launch or Loader, Dozer or Like Equipment When Operated on a Barge, Breakwater Wall, Slip, Dock or Scow, Deck Machinery.	26.80	18.52	45.32
530	Work Performed on the Great Lakes Including Deck Equipment Operator; Machineryman or Fireman (Operates 4 Units or More or Maintains Cranes 50 Tons or Under or Backhoes 115,000 Lbs. or Under), Deck Hand, Deck Engineer or Assistant Tug Operator; Off Road Trucks - Great Lakes ONLY.	26.80	18.52	45.32

AIRPORT PAVEMENT OR STATE HIGHWAY CONSTRUCTION

Includes all airport projects (excluding buildings) and all projects awarded by the Wisconsin Department of Transportation (excluding buildings).

SKILLED TRADES

Fringe Benefits Must Be Paid On <u>All</u> Hours Worked		HOURLY BASIC RATE OF PAY	HOURLY FRINGE BENEFITS	TOTAL
CODE	TRADE OR OCCUPATION	\$	\$	\$
103	Bricklayer, Blocklayer or Stonemason	32.66	15.92	48.58
105	Carpenter	30.23	15.16	45.39
107	Cement Finisher Future Increase(s): Add \$1.86 on 6/1/12; Add \$1.87 on 6/1/13; Add \$1.87 on 6/1/14; Add \$1.87 on 6/1/15; Add \$1.75 on 6/1/16. Premium Increase(s): DOT PREMIUMS: 1) Pay two times the hourly basic rate on Sunday, New Year's Day, Memorial Day, Independence Day, Labor Day, Thanksgiving Day & Christmas Day. 2) Add \$1.40/hr when the Wisconsin Department of Transportation or responsible governing agency requires that work be performed at night under artificial illumination with traffic control and the work is completed after sunset and before sunrise.	30.68	15.68	46.36
109	Electrician	37.25	14.68	51.93
111	Fence Erector	35.62	0.00	35.62
116	Ironworker	30.90	19.11	50.01
118	Line Constructor (Electrical)	35.97	18.08	54.05
124	Painter	28.00	11.15	39.15
125	Pavement Marking Operator	26.65	14.92	41.57
126	Piledriver	29.56	15.16	44.72
133	Roofer or Waterproofer	28.06	0.00	28.06
137	Teledata Technician or Installer	21.26	6.99	28.25
143	Tuckpointer, Caulker or Cleaner	22.00	9.75	31.75
144	Underwater Diver (Except on Great Lakes)	36.20	18.81	55.01
150	Heavy Equipment Operator - ELECTRICAL LINE CONSTRUCTION ONLY	35.42	12.90	48.32
151	Light Equipment Operator -ELECTRICAL LINE CONSTRUCTION ONLY	35.50	14.27	49.77
152	Heavy Truck Driver - ELECTRICAL LINE CONSTRUCTION ONLY	25.18	14.07	39.25
153	Light Truck Driver - ELECTRICAL LINE CONSTRUCTION ONLY	23.38	12.48	35.86

154	Groundman - ELECTRICAL LINE CONSTRUCTION ONLY	21.30	10.97	32.27
-----	---	-------	-------	-------

TRUCK DRIVERS

Fringe Benefits Must Be Paid On All Hours Worked

<u>CODE</u>	<u>TRADE OR OCCUPATION</u>	<u>HOURLY BASIC RATE OF PAY</u> \$	<u>HOURLY FRINGE BENEFITS</u> \$	<u>TOTAL</u> \$
201	Single Axle or Two Axle Future Increase(s): Add \$1.75/hr on 6/1/2012; Add \$1.85/hr on 6/1/2013. Premium Increase(s): DOT PREMIUM: Pay two times the hourly basic rate on Sunday, New Year's Day, Memorial Day, Independence Day, Labor Day, Thanksgiving Day & Christmas Day.	22.35	16.19	38.54
203	Three or More Axle Future Increase(s): Add \$1.75/hr on 6/1/2012; Add \$1.85/hr on 6/1/2013. Premium Increase(s): DOT PREMIUM: Pay two times the hourly basic rate on Sunday, New Year's Day, Memorial Day, Independence Day, Labor Day, Thanksgiving Day & Christmas Day.	22.50	16.19	38.69
204	Articulated, Euclid, Dumptor, Off Road Material Hauler	24.91	15.63	40.54
205	Pavement Marking Vehicle	23.84	14.76	38.60
206	Shadow or Pilot Vehicle	24.76	15.35	40.11
207	Truck Mechanic	24.91	15.35	40.26

LABORERS

Fringe Benefits Must Be Paid On All Hours Worked

<u>CODE</u>	<u>TRADE OR OCCUPATION</u>	<u>HOURLY BASIC RATE OF PAY</u> \$	<u>HOURLY FRINGE BENEFITS</u> \$	<u>TOTAL</u> \$
301	General Laborer Future Increase(s): Add \$1.60/hr on 6/1/2012; Add \$1.70/hr on 6/1/2013; Add \$1.60/hr on 6/1/2014. Premium Increase(s): Add \$.10/hr for topman, air tool operator, vibrator or tamper operator (mechanical hand operated), chain saw operator and demolition burning torch laborer; Add \$.15/hr for bituminous worker (raker and luteman), formsetter (curb, sidewalk and pavement) and strike off man; Add \$.20/hr for blaster and powderman; Add \$.25/hr for bottomman; Add \$.35/hr for line and grade specialist; Add \$.45/hr for pipelayer. / DOT PREMIUMS: 1) Pay two times the hourly basic rate on Sunday, New Year's Day, Memorial Day, Independence Day, Labor Day, Thanksgiving Day & Christmas Day. 2) Add \$1.25/hr for work on projects involving temporary traffic control setup, for lane and shoulder closures, when work under artificial illumination conditions is necessary as required by the project provisions (including prep time prior to and/or cleanup after such time period).	27.20	13.45	40.65
302	Asbestos Abatement Worker	23.96	12.88	36.84
303	Landscaper Future Increase(s): Add \$1.60/hr on 6/1/12; Add \$1.70/hr on 6/1/13; Add \$1.60/hr on 6/1/14. Premium Increase(s): DOT PREMIUMS: 1) Pay two times the hourly basic rate on Sunday, New Year's Day, Memorial Day, Independence Day, Labor Day, Thanksgiving Day & Christmas Day. 2) Add \$1.25/hr for work on projects involving temporary traffic control setup, for lane and shoulder closures, when work under artificial illumination conditions is necessary as required by the project provisions (including prep time prior to and/or cleanup after such time period).	27.20	13.45	40.65
304	Flagperson or Traffic Control Person Future Increase(s): Add \$1.60/hr on 6/1/2012; Add \$1.70/hr on 6/1/2013; Add \$1.60/hr on 6/1/2014. Premium Increase(s): DOT PREMIUMS: 1) Pay two times the hourly basic rate on Sunday, New Year's Day, Memorial Day, Independence Day, Labor Day, Thanksgiving Day & Christmas Day. 2) Add \$1.25/hr when the Wisconsin Department of Transportation or responsible governing agency requires that work be performed at night under artificial illumination with traffic control and the work is completed after sunset and before sunrise.	23.55	13.45	37.00

Fringe Benefits Must Be Paid On <u>All</u> Hours Worked				
<u>CODE</u>	<u>TRADE OR OCCUPATION</u>	<u>HOURLY BASIC RATE OF PAY</u>	<u>HOURLY FRINGE BENEFITS</u>	<u>TOTAL</u>
		\$	\$	\$
311	Fiber Optic Laborer (Outside, Other Than Concrete Encased)	16.51	0.00	16.51
314	Railroad Track Laborer	14.00	4.77	18.77

**HEAVY EQUIPMENT OPERATORS
AIRPORT PAVEMENT OR STATE HIGHWAY CONSTRUCTION**

Fringe Benefits Must Be Paid On <u>All</u> Hours Worked				
<u>CODE</u>	<u>TRADE OR OCCUPATION</u>	<u>HOURLY BASIC RATE OF PAY</u>	<u>HOURLY FRINGE BENEFITS</u>	<u>TOTAL</u>
		\$	\$	\$
531	Crane, Tower Crane, Pedestal Tower or Derrick, With Boom, Leads &/or Jib Lengths Measuring 176 Ft or Over; Crane, Tower Crane, Pedestal Tower or Derrick, With or Without Attachments, With a Lifting Capacity of Over 100 Tons, Self-Erecting Tower Crane With a Lifting Capacity Of Over 4,000 Lbs., Crane With Boom Dollies; Traveling Crane (Bridge Type). Future Increase(s): Add \$2/hr on 6/1/12; Add \$2/hr on 6/1/13; Add \$1.75/hr on 6/1/14. Premium Increase(s): DOT PREMIUMS: 1) Pay two times the hourly basic rate on Sunday, New Year's Day, Memorial Day, Independence Day, Labor Day, Thanksgiving Day & Christmas Day. 2) Add \$1.25/hr for work on projects involving temporary traffic control setup, for lane and shoulder closures, when work under artificial illumination conditions is necessary as required by the project provisions (including prep time prior to and/or cleanup after such time period).	34.22	18.90	53.12
532	Backhoe (Track Type) Having a Mfgr.'s Rated Capacity of 130,000 Lbs. or Over; Caisson Rig; Crane, Tower Crane, Portable Tower, Pedestal Tower or Derrick, With Boom, Leads &/or Jib Lengths Measuring 175 Ft or Under; Crane, Tower Crane, Portable Tower, Pedestal Tower or Derrick, With or Without Attachments, With a Lifting Capacity of 100 Tons or Under, Self-Erecting Tower Crane With A Lifting Capacity Of 4,000 Lbs., & Under; Dredge (NOT Performing Work on the Great Lakes); Licensed Boat Pilot (NOT Performing Work on the Great Lakes); Pile Driver. Future Increase(s): Add \$2/hr on 6/1/12; Add \$2/hr on 6/1/13; Add \$1.75/hr on 6/1/14. Premium Increase(s): DOT PREMIUMS: 1) Pay two times the hourly basic rate on Sunday, New Year's Day, Memorial Day, Independence Day, Labor Day, Thanksgiving Day & Christmas Day. 2) Add \$1.25/hr for work on projects involving temporary traffic control setup, for lane and shoulder closures, when work under artificial illumination conditions is necessary as required by the project provisions (including prep time prior to and/or cleanup after such time period).	33.72	18.90	52.62

Fringe Benefits Must Be Paid On All Hours Worked

<u>CODE</u>	<u>TRADE OR OCCUPATION</u>	<u>HOURLY BASIC RATE OF PAY</u> \$	<u>HOURLY FRINGE BENEFITS</u> \$	<u>TOTAL</u> \$
533	<p>Air Track, Rotary or Percussion Drilling Machine &/or Hammers, Blaster; Asphalt Heater, Planer & Scarifier; Asphalt Milling Machine; Asphalt Screed; Automatic Subgrader (Concrete); Backhoe (Track Type) Having a Mfr.'s Rated Capacity of Under 130,000 Lbs., Backhoe (Mini, 15,000 Lbs. & Under); Bituminous (Asphalt) Plant & Paver, Screed; Boatmen (NOT Performing Work on the Great Lakes); Boring Machine (Directional, Horizontal or Vertical); Bridge (Bidwell) Paver; Bulldozer or Endloader; Concrete Batch Plant, Batch Hopper; Concrete Breaker (Large, Auto, Vibratory/Sonic, Manual or Remote); Concrete Bump Cutter, Grinder, Planing or Grooving Machine; Concrete Conveyor System; Concrete Laser/Screed; Concrete Paver (Slipform); Concrete Pump, Concrete Conveyor (Rotec or Bidwell Type); Concrete Slipform Placer Curb & Gutter Machine; Concrete Spreader & Distributor; Crane (Carry Deck, Mini) or Truck Mounted Hydraulic Crane (10 Tons or Under); Crane With a Lifting Capacity of 25 Tons or Under; Forestry Equipment, Timbco, Tree Shear, Tub Grinder, Processor; Gradall (Cruz-Aire Type); Grader or Motor Patrol; Grout Pump; Hydro-Blaster (10,000 PSI or Over); Loading Machine (Conveyor); Material or Stack Hoist; Mechanic or Welder; Milling Machine; Post Hole Digger or Driver; Roller (Over 5 Ton); Scraper (Self Propelled or Tractor Drawn) 5 cu yds or More Capacity; Shoulder Widener; Sideboom; Skid Rig; Stabilizing or Concrete Mixer (Self-Propelled or 14S or Over); Straddle Carrier or Travel Lift; Tractor (Scraper, Dozer, Pusher, Loader); Tractor or Truck Mounted Hydraulic Backhoe; Trencher (Wheel Type or Chain Type); Tube Finisher; Tugger (NOT Performing Work on the Great Lakes); Winches & A-Frames.</p> <p>Future Increase(s): Add \$2/hr on 6/1/12; Add \$2/hr on 6/1/13; Add \$1.75/hr on 6/1/14.</p> <p>Premium Increase(s): DOT PREMIUMS: 1) Pay two times the hourly basic rate on Sunday, New Year's Day, Memorial Day, Independence Day, Labor Day, Thanksgiving Day & Christmas Day. 2) Add \$1.25/hr for work on projects involving temporary traffic control setup, for lane and shoulder closures, when work under artificial illumination conditions is necessary as required by the project provisions (including prep time prior to and/or cleanup after such time period).</p>	33.22	18.90	52.12

Fringe Benefits Must Be Paid On All Hours Worked

<u>CODE</u>	<u>TRADE OR OCCUPATION</u>	<u>HOURLY BASIC RATE OF PAY</u> \$	<u>HOURLY FRINGE BENEFITS</u> \$	<u>TOTAL</u> \$
534	<p>Belting, Burlap, Texturing Machine; Broom or Sweeper; Compactor (Self-Propelled or Tractor Mounted, Towed & Light Equipment); Concrete Finishing Machine (Road Type); Environmental Burner; Farm or Industrial Type Tractor; Fireman (Asphalt Plant, Pile Driver & Derrick NOT Performing Work on the Great Lakes); Forklift; Greaser; Hoist (Tugger, Automatic); Jeep Digger; Joint Sawyer (Multiple Blade); Launch (NOT Performing Work on the Great Lakes); Lift Slab Machine; Mechanical Float; Mulcher; Power Subgrader; Robotic Tool Carrier (With or Without Attachments); Roller (Rubber Tire, 5 Ton or Under); Self Propelled Chip Spreader; Shouldering Machine; Skid Steer Loader (With or Without Attachments); Telehandler; Tining or Curing Machine.</p> <p>Future Increase(s): Add \$2/hr on 6/1/12; Add \$2/hr on 6/1/13; Add \$1.75/hr on 6/1/14.</p> <p>Premium Increase(s): DOT PREMIUMS: 1) Pay two times the hourly basic rate on Sunday, New Year's Day, Memorial Day, Independence Day, Labor Day, Thanksgiving Day & Christmas Day. 2) Add \$1.25/hr for work on projects involving temporary traffic control setup, for lane and shoulder closures, when work under artificial illumination conditions is necessary as required by the project provisions (including prep time prior to and/or cleanup after such time period).</p>	32.96	18.90	51.86
535	<p>Air Compressor (&/or 400 CFM or Over); Air, Electric or Hydraulic Jacking System; Augers (Vertical & Horizontal); Automatic Belt Conveyor & Surge Bin; Boiler (Temporary Heat); Concrete Proportioning Plant; Crusher, Screening or Wash Plant; Generator (&/or 150 KW or Over); Heaters (Mechanical); High Pressure Utility Locating Machine (Daylighting Machine); Mudjack; Oiler; Prestress Machine; Pug Mill; Pump (3 Inch or Over) or Well Points; Rock, Stone Breaker; Screed (Milling Machine); Stump Chipper; Tank Car Heaters; Vibratory Hammer or Extractor, Power Pack.</p> <p>Future Increase(s): Add \$2/hr on 6/1/12; Add \$2/hr on 6/1/13; Add \$1.75/hr on 6/1/14.</p> <p>Premium Increase(s): DOT PREMIUMS: 1) Pay two times the hourly basic rate on Sunday, New Year's Day, Memorial Day, Independence Day, Labor Day, Thanksgiving Day & Christmas Day. 2) Add \$1.25/hr for work on projects involving temporary traffic control setup, for lane and shoulder closures, when work under artificial illumination conditions is necessary as required by the project provisions (including prep time prior to and/or cleanup after such time period).</p>	32.67	18.90	51.57
536	Fiber Optic Cable Equipment.	22.00	7.27	29.27
537	Work Performed on the Great Lakes Including Diver; Wet Tender or Hydraulic Dredge Engineer.	36.20	18.81	55.01

Fringe Benefits Must Be Paid On <u>All</u> Hours Worked				
<u>CODE</u>	<u>TRADE OR OCCUPATION</u>	<u>HOURLY BASIC RATE OF PAY</u>	<u>HOURLY FRINGE BENEFITS</u>	<u>TOTAL</u>
		\$	\$	\$
538	Work Performed on the Great Lakes Including 70 Ton & Over Tug Operator; Assistant Hydraulic Dredge Engineer; Crane or Backhoe Operator; Hydraulic Dredge Leverman or Diver's Tender; Mechanic or Welder.	36.20	18.81	55.01
539	Work Performed on the Great Lakes Including Deck Equipment Operator or Machineryman (Maintains Cranes Over 50 Tons or Backhoes 115,000 Lbs. or More); Tug, Launch or Loader, Dozer or Like Equipment When Operated on a Barge, Breakwater Wall, Slip, Dock or Scow, Deck Machinery.	26.80	18.52	45.32
540	Work Performed on the Great Lakes Including Deck Equipment Operator, Machineryman or Fireman (Operates 4 Units or More or Maintains Cranes 50 Tons or Under or Backhoes 115,000 Lbs. or Under); Deck Hand, Deck Engineer or Assistant Tug Operator; Off Road Trucks-Great Lakes ONLY.	26.80	18.52	45.32

LOCAL STREET OR MISCELLANEOUS PAVING CONSTRUCTION

Includes roads, streets, alleys, trails, bridges, paths, racetracks, parking lots and driveways (except residential or agricultural), public sidewalks or other similar projects (excluding projects awarded by the Wisconsin Department of Transportation).

SKILLED TRADES

Fringe Benefits Must Be Paid On <u>All</u> Hours Worked		HOURLY BASIC RATE OF PAY	HOURLY FRINGE BENEFITS	TOTAL
CODE	TRADE OR OCCUPATION	\$	\$	\$
103	Bricklayer, Blocklayer or Stonemason	32.66	16.20	48.86
105	Carpenter	29.06	15.16	44.22
107	Cement Finisher Future Increase(s): Add \$1.86 on 6/1/12; Add \$1.87 on 6/1/13; Add \$1.87 on 6/1/14; Add \$1.87 on 6/1/15; Add \$1.75 on 6/1/16. Premium Increase(s): DOT PREMIUMS: 1) Pay two times the hourly basic rate on Sunday, New Year's Day, Memorial Day, Independence Day, Labor Day, Thanksgiving Day & Christmas Day. 2) Add \$1.40/hr when the Wisconsin Department of Transportation or responsible governing agency requires that work be performed at night under artificial illumination with traffic control and the work is completed after sunset and before sunrise.	30.68	15.68	46.36
109	Electrician Future Increase(s): Add \$.50/hr. effective 06/04/2012. Premium Increase(s): DOT PREMIUM: Pay two times the hourly basic rate on Sunday, New Year's Day, Memorial Day, Independence Day, Labor Day, Thanksgiving Day & Christmas Day.	28.74	17.86	46.60
111	Fence Erector	25.50	0.26	25.76
116	Ironworker	30.90	19.11	50.01
118	Line Constructor (Electrical)	35.97	18.08	54.05
124	Painter	25.65	14.11	39.76
125	Pavement Marking Operator	26.00	0.00	26.00
126	Piledriver	29.56	15.16	44.72
133	Rofer or Waterproofer	28.06	0.00	28.06
137	Teledata Technician or Installer	21.26	6.99	28.25
143	Tuckpointer, Caulker or Cleaner	22.00	9.75	31.75
144	Underwater Diver (Except on Great Lakes)	36.20	18.81	55.01
150	Heavy Equipment Operator - ELECTRICAL LINE CONSTRUCTION ONLY	35.42	12.90	48.32

Fringe Benefits Must Be Paid On <u>All</u> Hours Worked		HOURLY BASIC RATE OF PAY	HOURLY FRINGE BENEFITS	TOTAL
<u>CODE</u>	<u>TRADE OR OCCUPATION</u>	\$	\$	\$
151	Light Equipment Operator -ELECTRICAL LINE CONSTRUCTION ONLY Premium Increase(s): DOT PREMIUM: Pay two times the hourly basic rate on Sunday, New Year's Day, Memorial Day, Independence Day, Labor Day, Thanksgiving Day & Christmas Day.	29.64	14.64	44.28
152	Heavy Truck Driver - ELECTRICAL LINE CONSTRUCTION ONLY	25.18	13.07	38.25
153	Light Truck Driver - ELECTRICAL LINE CONSTRUCTION ONLY	23.38	12.48	35.86
154	Groundman - ELECTRICAL LINE CONSTRUCTION ONLY	21.30	10.97	32.27

TRUCK DRIVERS

Fringe Benefits Must Be Paid On <u>All</u> Hours Worked		HOURLY BASIC RATE OF PAY	HOURLY FRINGE BENEFITS	TOTAL
<u>CODE</u>	<u>TRADE OR OCCUPATION</u>	\$	\$	\$
201	Single Axle or Two Axle	15.00	0.00	15.00
203	Three or More Axle	19.50	4.97	24.47
204	Articulated, Euclid, Dumptor, Off Road Material Hauler Future Increase(s): Add \$1/hr on 6/3/2012; Add \$1/hr on 6/2/2013.	31.89	17.98	49.87
205	Pavement Marking Vehicle	19.25	10.84	30.09
206	Shadow or Pilot Vehicle	15.00	0.00	15.00
207	Truck Mechanic	19.50	4.97	24.47

LABORERS

Fringe Benefits Must Be Paid On <u>All</u> Hours Worked		HOURLY BASIC RATE OF PAY	HOURLY FRINGE BENEFITS	TOTAL
<u>CODE</u>	<u>TRADE OR OCCUPATION</u>	\$	\$	\$
301	General Laborer	26.15	12.29	38.44
303	Landscaper	23.71	15.07	38.78
304	Flagperson or Traffic Control Person	12.00	17.89	29.89
311	Fiber Optic Laborer (Outside, Other Than Concrete Encased)	16.51	0.00	16.51
314	Railroad Track Laborer	14.00	4.77	18.77

**HEAVY EQUIPMENT OPERATORS
CONCRETE PAVEMENT OR BRIDGE WORK**

Fringe Benefits Must Be Paid On All Hours Worked

<u>CODE</u>	<u>TRADE OR OCCUPATION</u>	<u>HOURLY BASIC RATE OF PAY</u> \$	<u>HOURLY FRINGE BENEFITS</u> \$	<u>TOTAL</u> \$
541	Crane, Tower Crane, Pedestal Tower or Derrick, With or Without Attachments, With a Lifting Capacity of Over 100 Tons, Self-Erecting Tower Crane With a Lifting Capacity Of Over 4,000 Lbs., Crane With Boom Dollies; Crane, Tower Crane, Pedestal Tower or Derrick, With Boom, Leads &/or Jib Lengths Measuring 176 Ft or Over; Master Mechanic. Future Increase(s): Add \$2/hr on 6/1/12; Add \$2/hr on 6/1/13; Add \$1.75/hr on 6/1/14. Premium Increase(s): DOT PREMIUMS: 1) Pay two times the hourly basic rate on Sunday, New Year's Day, Memorial Day, Independence Day, Labor Day, Thanksgiving Day & Christmas Day. 2) Add \$1.25/hr for work on projects involving temporary traffic control setup, for lane and shoulder closures, when work under artificial illumination conditions is necessary as required by the project provisions (including prep time prior to and/or cleanup after such time period).	34.22	18.90	53.12
542	Backhoe (Track Type) Having a Mfgr.'s Rated Capacity of 130,000 Lbs. or Over; Caisson Rig; Crane, Tower Crane, Portable Tower, Pedestal Tower or Derrick, With or Without Attachments, With a Lifting Capacity of 100 Tons or Under, Self-Erecting Tower Crane With a Lifting Capacity of 4,000 Lbs. & Under; Crane, Tower Crane Portable Tower, Pedestal Tower or Derrick, With Boom, Leads &/or Jib Lengths Measuring 175 Ft or Under; Dredge (NOT Performing Work on the Great Lakes); Licensed Boat Pilot (NOT Performing Work on the Great Lakes); Pile Driver. Future Increase(s): Add \$2/hr on 6/1/12; Add \$2/hr on 6/1/13; Add \$1.75/hr on 6/1/14. Premium Increase(s): DOT PREMIUMS: 1) Pay two times the hourly basic rate on Sunday, New Year's Day, Memorial Day, Independence Day, Labor Day, Thanksgiving Day & Christmas Day. 2) Add \$1.25/hr for work on projects involving temporary traffic control setup, for lane and shoulder closures, when work under artificial illumination conditions is necessary as required by the project provisions (including prep time prior to and/or cleanup after such time period).	33.72	18.90	52.62

Fringe Benefits Must Be Paid On All Hours Worked

<u>CODE</u>	<u>TRADE OR OCCUPATION</u>	<u>HOURLY BASIC RATE OF PAY</u> \$	<u>HOURLY FRINGE BENEFITS</u> \$	<u>TOTAL</u> \$
543	<p>Air Track, Rotary or Percussion Drilling Machine &/or Hammers, Blaster; Automatic Subgrader (Concrete); Backhoe (Track Type) Having a Mfgr.'s Rated Capacity of Under 130,000 Lbs., Backhoe (Mini, 15,000 Lbs. & Under); Boring Machine (Directional, Horizontal or Vertical); Bridge (Bidwell) Paver; Bulldozer or Endloader; Concrete Batch Plant, Batch Hopper; Concrete Breaker (Large, Auto, Vibratory/Sonic, Manual or Remote); Concrete Bump Cutter, Grinder, Planing or Grooving Machine; Concrete Conveyor System; Concrete Laser/Screed; Concrete Paver (Slipform); Concrete Pump, Concrete Conveyor (Rotec or Bidwell Type); Concrete Slipform Placer Curb & Gutter Machine; Concrete Spreader & Distributor; Crane (Carry Deck, Mini) or Truck Mounted Hydraulic Crane (10 Tons or Under); Crane With a Lifting Capacity of 25 Tons or Under; Forestry Equipment, Timbco, Tree Shear, Tub Grinder, Processor; Gradall (Cruz-Aire Type); Grader or Motor Patrol; Grout Pump; Hydro-Blaster (10,000 PSI or Over); Loading Machine (Conveyor); Manhoist; Material or Stack Hoist; Mechanic or Welder; Milling Machine; Post Hole Digger or Driver; Scraper (Self Propelled or Tractor Drawn) 5 cu yds or More Capacity; Shoulder Widener; Sideboom; Skid Rig; Stabilizing or Concrete Mixer (Self-Propelled or 14S or Over); Straddle Carrier or Travel Lift; Tractor (Scraper, Dozer, Pusher, Loader); Tractor or Truck Mounted Hydraulic Backhoe; Trencher (Wheel Type or Chain Type); Tube Finisher; Tugger (NOT Performing Work on the Great Lakes); Winches & A-Frames.</p> <p>Future Increase(s): Add \$2/hr on 6/1/12; Add \$2/hr on 6/1/13; Add \$1.75/hr on 6/1/14.</p> <p>Premium Increase(s): DOT PREMIUMS: 1) Pay two times the hourly basic rate on Sunday, New Year's Day, Memorial Day, Independence Day, Labor Day, Thanksgiving Day & Christmas Day. 2) Add \$1.25/hr for work on projects involving temporary traffic control setup, for lane and shoulder closures, when work under artificial illumination conditions is necessary as required by the project provisions (including prep time prior to and/or cleanup after such time period).</p>	33.22	18.90	52.12

Fringe Benefits Must Be Paid On <u>All</u> Hours Worked		HOURLY BASIC RATE OF PAY	HOURLY FRINGE BENEFITS	TOTAL
CODE	TRADE OR OCCUPATION	\$	\$	\$
544	Backfiller; Belting, Burlap, Texturing Machine; Broom or Sweeper; Compactor (Self-Propelled or Tractor Mounted, Towed & Light Equipment); Concrete Finishing Machine (Road Type); Environmental Burner; Farm or Industrial Type Tractor; Fireman (Pile Driver & Derrick NOT Performing Work on the Great Lakes); Forklift; Greaser; Jeep Digger; Joint Sawyer (Multiple Blade); Launch (NOT Performing Work on the Great Lakes); Lift Slab Machine; Mechanical Float; Mulcher; Power Subgrader; Robotic Tool Carrier (With or Without Attachments); Self Propelled Chip Spreader; Shouldering Machine; Skid Steer Loader (With or Without Attachments); Telehandler; Tining or Curing Machine. Future Increase(s): Add \$2/hr on 6/1/12; Add \$2/hr on 6/1/13; Add \$1.75/hr on 6/1/14. Premium Increase(s): DOT PREMIUMS: 1) Pay two times the hourly basic rate on Sunday, New Year's Day, Memorial Day, Independence Day, Labor Day, Thanksgiving Day & Christmas Day. 2) Add \$1.25/hr for work on projects involving temporary traffic control setup, for lane and shoulder closures, when work under artificial illumination conditions is necessary as required by the project provisions (including prep time prior to and/or cleanup after such time period).	33.22	18.90	52.12
545	Air Compressor (&/or 400 CFM or Over); Air, Electric or Hydraulic Jacking System; Automatic Belt Conveyor & Surge Bin; Boiler (Temporary Heat); Concrete Proportioning Plant; Crusher, Screening or Wash Plant; Generator (&/or 150 KW or Over); Heaters (Mechanical); High Pressure Utility Locating Machine (Daylighting Machine); Mudjack; Oiler; Prestress Machine; Pug Mill; Pump (3 Inch or Over) or Well Points; Rock, Stone Breaker; Screed (Milling Machine); Stump Chipper; Tank Car Heaters; Vibratory Hammer or Extractor, Power Pack.	30.42	17.58	48.00
546	Fiber Optic Cable Equipment.	22.00	7.27	29.27
547	Work Performed on the Great Lakes Including Diver; Wet Tender or Hydraulic Dredge Engineer.	36.20	18.81	55.01
548	Work Performed on the Great Lakes Including 70 Ton & Over Tug Operator; Assistant Hydraulic Dredge Engineer; Crane or Backhoe Operator; Hydraulic Dredge Leverman or Diver's Tender; Mechanic or Welder.	36.20	18.81	55.01
549	Work Performed on the Great Lakes Including Deck Equipment Operator or Machineryman (Maintains Cranes Over 50 Tons or Backhoes 115,000 Lbs. or more); Tug, Launch or Loader, Dozer or Like Equipment When Operated on a Barge, Breakwater Wall, Slip, Dock or Scow, Deck Machinery.	26.80	18.52	45.32
550	Work Performed on the Great Lakes Including Deck Equipment Operator; Machineryman or Fireman (Operates 4 Units or More or Maintains Cranes 50 Tons or Under or Backhoes 115,000 Lbs. or Under); Deck Hand, Deck Engineer or Assistant Tug Operator; Off Road Trucks - Great Lakes ONLY.	26.80	18.52	45.32

**HEAVY EQUIPMENT OPERATORS
ASPHALT PAVEMENT OR OTHER WORK**

Fringe Benefits Must Be Paid On All Hours Worked

<u>CODE</u>	<u>TRADE OR OCCUPATION</u>	<u>HOURLY BASIC RATE OF PAY</u> \$	<u>HOURLY FRINGE BENEFITS</u> \$	<u>TOTAL</u> \$
551	Crane, Tower Crane, Pedestal Tower or Derrick, With or Without Attachments, With a Lifting Capacity of Over 100 Tons, Self Erecting Tower Crane With a Lifting Capacity of Over 4,000 Lbs., Crane With Boom Dollies; Crane, Tower Crane, Pedestal Tower or Derrick, With Boom, Leads and/or Jib Lengths Measuring 176 Ft or Over; Master Mechanic.	34.62	17.96	52.58
552	Backhoe (Track Type) Having a Mfgr.'s Rated Capacity of 130,000 Lbs. or Over; Caisson Rig; Crane, Tower Crane, Portable Tower, Pedestal Tower or Derrick, With or Without Attachments, With a Lifting Capacity of 100 Tons or Under, Self-Erecting Tower Crane With a Lifting Capacity Of 4,000 Lbs. & Under; Crane, Tower Crane, Portable Tower, Pedestal Tower or Derrick, With Boom, Leads &/or Jib Lengths Measuring 175 Ft or Under; Dredge (NOT Performing Work on the Great Lakes); Licensed Boat Pilot (NOT Performing Work on the Great Lakes); Pile Driver. Future Increase(s): Add \$2/hr on 6/1/12; Add \$2/hr on 6/1/13; Add \$1.75/hr on 6/1/14. Premium Increase(s): DOT PREMIUMS: 1) Pay two times the hourly basic rate on Sunday, New Year's Day, Memorial Day, Independence Day, Labor Day, Thanksgiving Day & Christmas Day. 2) Add \$1.25/hr for work on projects involving temporary traffic control setup, for lane and shoulder closures, when work under artificial illumination conditions is necessary as required by the project provisions (including prep time prior to and/or cleanup after such time period).	33.72	18.90	52.62

Fringe Benefits Must Be Paid On <u>All</u> Hours Worked		HOURLY BASIC RATE OF PAY	HOURLY FRINGE BENEFITS	TOTAL
CODE	TRADE OR OCCUPATION	\$	\$	\$
553	Air, Track, Rotary or Percussion Drilling Machine &/or Hammers, Blaster; Asphalt Heater, Planer & Scarifier; Asphalt Milling Machine; Asphalt Screed; Backhoe (Track Type) Having a Mfgr.'s Rated Capacity of Under 130,000 Lbs., Backhoe (Mini, 15,000 Lbs. & Under); Bituminous (Asphalt) Plant & Paver, Screed; Boring Machine (Directional, Horizontal or Vertical); Bulldozer or Endloader; Concrete Breaker (Large, Auto, Vibratory/Sonic, Manual or Remote); Concrete Conveyor System; Concrete Laser/Screed; Concrete Slipform Placer Curb & Gutter Machine; Crane (Carry Deck, Mini) or Truck Mounted Hydraulic Crane (10 Tons or Under); Crane With a Lifting Capacity of 25 Tons or Under; Forestry Equipment, Timbco, Tree Shear, Tub Grinder, Processor; Gradall (Cruz-Aire Type); Grader or Motor Patrol; Hydro-Blaster (10,000 PSI or Over); Loading Machine (Conveyor); Manhoist; Material or Stack Hoist; Mechanic or Welder; Milling Machine; Post Hole Digger or Driver; Railroad Track Rail Levelling Machine, Tie Placer, Extractor, Tamper, Stone Leveler or Rehabilitation Equipment; Roller (Over 5 Ton); Scraper (Self Propelled or Tractor Drawn) 5 cu yds or More Capacity; Shoulder Widener; Sideboom; Skid Rig; Stabilizing or Concrete Mixer (Self-Propelled or 14S or Over); Tractor (Scraper, Dozer, Pusher, Loader); Tractor or Truck Mounted Hydraulic Backhoe; Trencher (Wheel Type or Chain Type); Tube Finisher; Tugger (NOT Performing Work on the Great Lakes); Winches & A-Frames. Future Increase(s): Add \$2/hr on 6/1/12; Add \$2/hr on 6/1/13; Add \$1.75/hr on 6/1/14.	32.67	18.55	51.22
554	Backfiller; Broom or Sweeper; Compactor (Self-Propelled or Tractor Mounted, Towed & Light Equipment); Concrete Finishing Machine (Road Type); Environmental Burner; Farm or Industrial Type Tractor; Fireman (Asphalt Plant, Pile Driver & Derrick NOT Performing Work on the Great Lakes); Forklift; Greaser; Hoist (Tugger, Automatic); Jeep Digger; Joint Sawyer (Multiple Blade); Launch (NOT Performing Work on the Great Lakes); Lift Slab Machine; Mechanical Float; Mulcher; Power Subgrader; Robotic Tool Carrier (With or Without Attachments); Roller (Rubber Tire, 5 Ton or Under); Self-Propelled Chip Spreader; Shouldering Machine; Skid Steer Loader (With or Without Attachments); Telehandler.	31.52	17.89	49.41
555	Air Compressor (&/or 400 CFM or Over); Air, Electric or Hydraulic Jacking System; Augers (Vertical & Horizontal); Automatic Belt Conveyor & Surge Bin; Boiler (Temporary Heat); Crusher, Screening or Wash Plant; Generator (&/or 150 KW or Over); Heaters (Mechanical); High Pressure Utility Locating Machine (Daylighting Machine); Mudjack; Oiler; Prestress Machine; Pug Mill; Pump (3 Inch or Over) or Well Points; Rock, Stone Breaker; Screed (Milling Machine); Stump Chipper; Tank Car Heaters; Vibratory Hammer or Extractor, Power Pack. Future Increase(s): Add \$2/hr on 6/1/12; Add \$2/hr on 6/1/13; Add \$1.75/hr on 6/1/14.	32.67	18.55	51.22
556	Fiber Optic Cable Equipment.	22.00	7.27	29.27

RESIDENTIAL OR AGRICULTURAL CONSTRUCTION

Includes single family houses or apartment buildings of no more than four (4) stories in height and all buildings, structures or facilities that are primarily used for agricultural or farming purposes, excluding commercial buildings. For classification purposes, the exterior height of a residential building, in terms of stories, is the primary consideration. All incidental items such as site work, driveways, parking lots, private sidewalks, private septic systems or sewer and water laterals connected to a public system and swimming pools are included within this definition. Residential buildings of five (5) stories and above are NOT included within this definition.

SKILLED TRADES

<u>CODE</u>	<u>TRADE OR OCCUPATION</u>	Fringe Benefits Must Be Paid On <u>All</u> Hours Worked		
		<u>HOURLY BASIC RATE OF PAY</u> \$	<u>HOURLY FRINGE BENEFITS</u> \$	<u>TOTAL</u> \$
101	Acoustic Ceiling Tile Installer	27.00	2.47	29.47
102	Boilermaker	31.09	23.75	54.84
103	Bricklayer, Blocklayer or Stonemason	32.00	3.00	35.00
104	Cabinet Installer	22.00	2.74	24.74
105	Carpenter	27.00	3.46	30.46
106	Carpet Layer or Soft Floor Coverer	23.95	2.78	26.73
107	Cement Finisher	21.33	4.25	25.58
108	Drywall Taper or Finisher	23.80	1.55	25.35
109	Electrician	22.00	9.18	31.18
110	Elevator Constructor	43.79	25.48	69.27
111	Fence Erector	17.64	4.33	21.97
112	Fire Sprinkler Fitter	36.39	16.97	53.36
113	Glazier	36.23	11.22	47.45
114	Heat or Frost Insulator	29.04	19.73	48.77
115	Insulator (Batt or Blown)	18.95	1.70	20.65
116	Ironworker	30.90	19.11	50.01
117	Lather	28.15	15.14	43.29
119	Marble Finisher	31.16	16.27	47.43
120	Marble Mason	32.66	16.20	48.86
121	Metal Building Erector	17.50	2.80	20.30
123	Overhead Door Installer	17.00	0.00	17.00
124	Painter	25.65	6.33	31.98
125	Pavement Marking Operator	26.00	0.00	26.00

Fringe Benefits Must Be Paid On <u>All</u> Hours Worked		HOURLY BASIC RATE OF PAY	HOURLY FRINGE BENEFITS	TOTAL
<u>CODE</u>	<u>TRADE OR OCCUPATION</u>	\$	\$	\$
129	Plasterer	19.00	0.29	19.29
130	Plumber	30.00	10.34	40.34
132	Refrigeration Mechanic	30.96	0.00	30.96
133	Rofer or Waterproofer	29.85	1.55	31.40
134	Sheet Metal Worker	21.03	3.40	24.43
135	Steamfitter	32.59	11.05	43.64
137	Teledata Technician or Installer	19.23	5.32	24.55
138	Temperature Control Installer	22.45	4.11	26.56
139	Terrazzo Finisher	18.00	5.35	23.35
140	Terrazzo Mechanic	31.16	16.27	47.43
141	Tile Finisher	23.96	13.36	37.32
142	Tile Setter	21.00	0.00	21.00
143	Tuckpointer, Caulker or Cleaner	23.96	12.88	36.84
146	Well Driller or Pump Installer	15.10	12.38	27.48
147	Sliding Installer	18.80	1.42	20.22

TRUCK DRIVERS

Fringe Benefits Must Be Paid On <u>All</u> Hours Worked		HOURLY BASIC RATE OF PAY	HOURLY FRINGE BENEFITS	TOTAL
<u>CODE</u>	<u>TRADE OR OCCUPATION</u>	\$	\$	\$
201	Single Axle or Two Axle	19.86	2.54	22.40
203	Three or More Axle	19.50	14.27	33.77
205	Pavement Marking Vehicle	19.25	10.84	30.09
207	Truck Mechanic	19.00	1.75	20.75

LABORERS

Fringe Benefits Must Be Paid On <u>All</u> Hours Worked		HOURLY BASIC RATE OF PAY	HOURLY FRINGE BENEFITS	TOTAL
<u>CODE</u>	<u>TRADE OR OCCUPATION</u>	\$	\$	\$
301	General Laborer	16.09	7.18	23.27
302	Asbestos Abatement Worker	17.00	2.21	19.21
303	Landscaper	25.00	0.54	25.54

311	Fiber Optic Laborer (Outside, Other Than Concrete Encased)	16.51	0.00	16.51
-----	--	-------	------	-------

**HEAVY EQUIPMENT OPERATORS
RESIDENTIAL OR AGRICULTURAL CONSTRUCTION**

Fringe Benefits Must Be Paid On All Hours Worked

<u>CODE</u>	<u>TRADE OR OCCUPATION</u>	<u>HOURLY BASIC RATE OF PAY</u> \$	<u>HOURLY FRINGE BENEFITS</u> \$	<u>TOTAL</u> \$
557	Asphalt Heater, Planer & Scarifier; Asphalt Milling Machine; Asphalt Screed; Backhoe (Track Type); Backhoe (Mini, 15,000 Lbs. & Under); Bituminous (Asphalt) Plant & Paver, Screed; Boring Machine (Directional, Horizontal or Vertical); Bulldozer or Endloader; Concrete Breaker (Large, Auto, Vibratory/Sonic, Manual or Remote); Concrete Bump Cutter, Grinder, Planing or Grooving Machine; Concrete Conveyor System; Concrete Laser/Screed; Concrete Paver (Slipform); Concrete Pump, Concrete Conveyor (Rotec or Bidwell Type); Concrete Slipform Placer Curb & Gutter Machine; Concrete Spreader & Distributor; Crane (Carry Deck, Mini) or Truck Mounted Hydraulic Crane (10 Tons or Under); Crane With a Lifting Capacity of 25 Tons or Under; Crane, Shovel, Dragline, Clamshells; Forestry Equipment, Timbco, Tree Shear, Tub Grinder, Processor; Grader or Motor Patrol; Grout Pump; Hydro-Blaster (10,000 PSI or Over); Loading Machine (Conveyor); Manholst; Material or Stack Hoist; Mechanic or Welder; Milling Machine; Roller (Over 5 Ton); Scraper (Self Propelled or Tractor Drawn) 5 cu yds or More Capacity; Shoulder Widener; Skid Rlg; Stabilizing or Concrete Mixer (Self-Propelled or 14S or Over); Tractor (Scraper, Dozer, Pusher, Loader); Tractor or Truck Mounted Hydraulic Backhoe; Tractor or Truck Mounted Hydraulic Crane (10 Tons or Under); Trencher (Wheel Type or Chain Type); Winches & A-Frames.	29.45	15.37	44.82
558	Air Compressor (&/or 400 CFM or Over); Air, Electric or Hydraulic Jacking System; Backfiller; Belting, Burlap, Texturing Machine; Boiler (Temporary Heat); Broom or Sweeper; Compactor (Self-Propelled or Tractor Mounted, Towed & Light Equipment); Concrete Finishing Machine (Road Type); Farm or Industrial Type Tractor; Forklift; Generator (&/or 150 KW or Over); Heaters (Mechanical); High Pressure Utility Locating Machine (Daylighting Machine); Jeep Digger; Lift Slab Machine; Mulcher; Oiler; Post Hole Digger or Driver; Power Subgrader; Pump (3 Inch or Over) or Well Points; Robotic Tool Carrier (With or Without Attachments); Rock, Stone Breaker; Roller (Rubber Tire, 5 Tons or Under); Screed (Milling Machine); Self Propelled Chlp Spreader; Shouldering Machine; Skid Steer Loader (With or Without Attachments); Stump Chipper; Telehandler; Vibratory Hammer or Extractor, Power Pack.	26.45	14.35	40.80

***** END OF RATES *****