



Department of Public Works
City Engineering Division

Robert F. Phillips, P.E.
City Engineer

City-County Building, Room 115
210 Martin Luther King, Jr. Boulevard
Madison, Wisconsin 53703
FAX 608 264 9275
www.cityofmadison.com

608 266 4751

Assistant City Engineer
Michael R. Dailey, P.E.

Principal Engineers
Christina M. Bachmann, P.E.
John S. Fahrney, P.E.
Gregory T. Fries, P.E.
Christopher J. Petykowski, P.E.

Facilities & Sustainability
Jeanne E. Hoffman, Manager
James C. Whitney, A.I.A.

Operations Supervisor
Kathleen M. Cryan

GIS Manager
David A. Davis, R.L.S.

Financial Officer
Steven B. Danner-Rivers

Hydrogeologist
Brynn Bemis

NOTICE OF ADDENDUM

E. JOHNSON STREET PATH, FIRST STREET TO THIRD STREET

ADDENDUM NO. 1

CONTRACT NO. 6787

BID PLANS:

REMOVE

Remove pages P-2, P-3

INSERT

Insert pages P-2, P-3 (revised 4/3/13)

Summary of Addendum 1:

Revised P-2 and P-3 show locations of LB-8 Base

Revise and amend the contract document(s) for the above project as stated in this addendum, otherwise, the original document shall remain in effect.

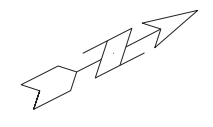
Please acknowledge this addendum on page E1 of the contract documents.

Electronic version of these documents can be found on the City of Madison web site at:

<http://www.cityofmadison.com/business/PW/contracts/openforBid.cfm>

If you are unable to download plan revisions associated with the addendum, please contact the Engineering office at 608-266-4751 receive the material by another route.

Robert F. Phillips, P.E., City Engineer

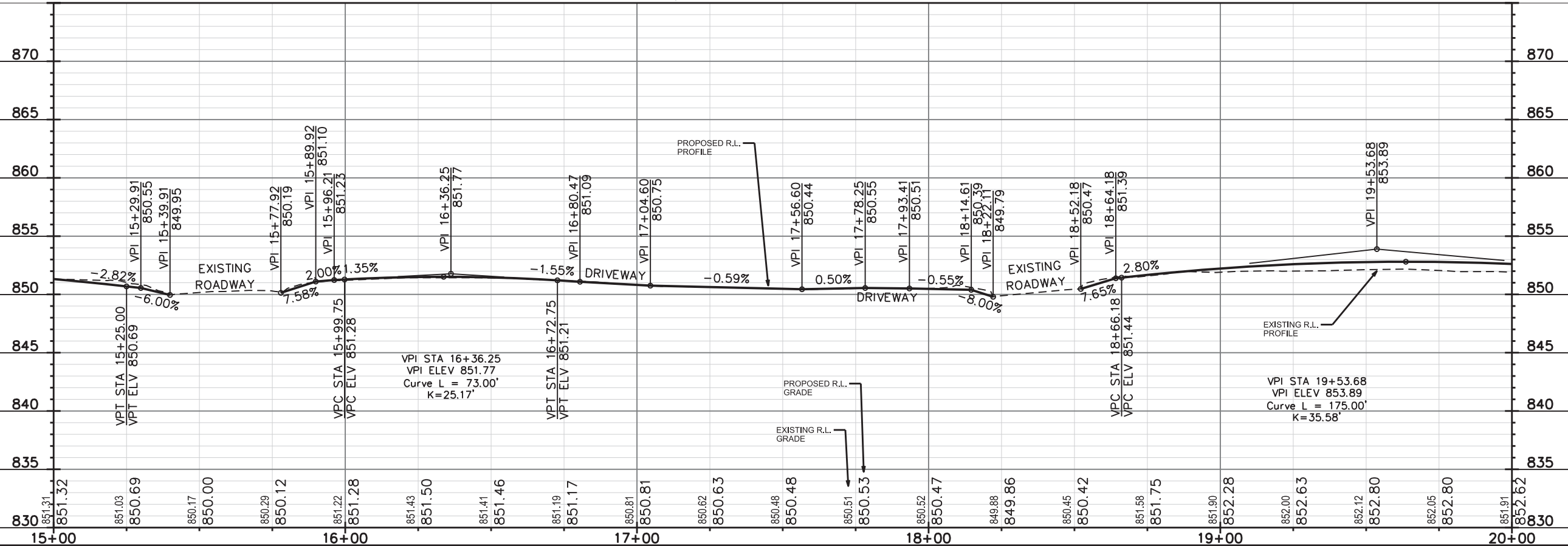
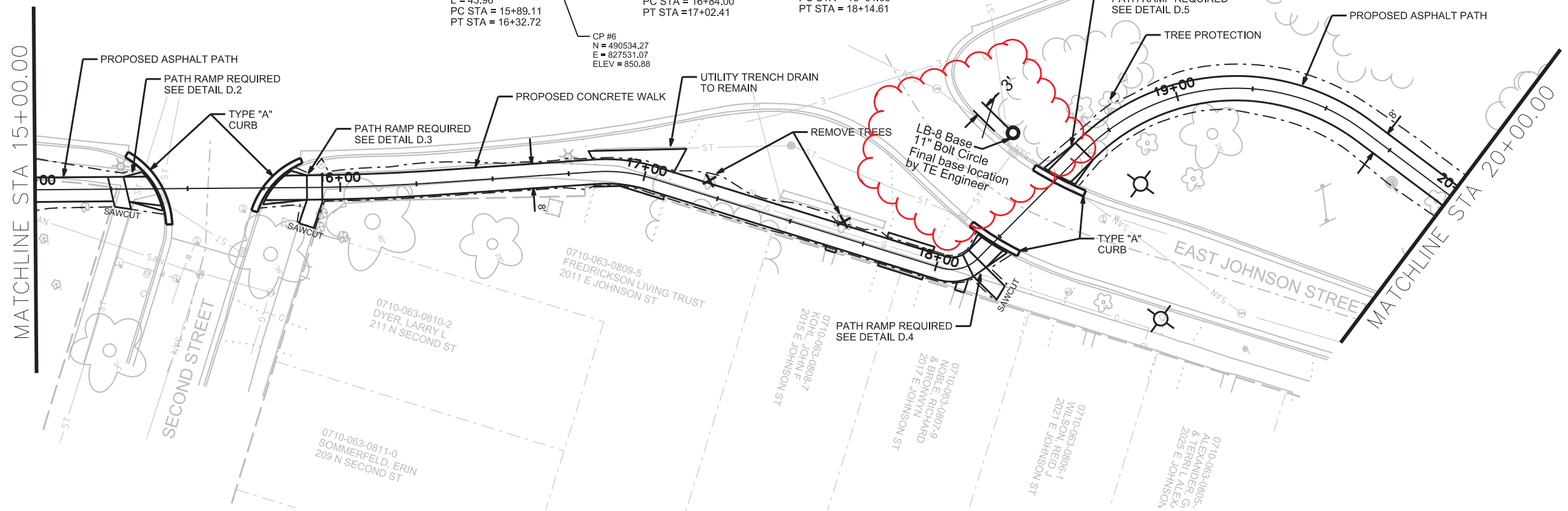


CIRCULAR
PI STA = 16+10.75
N = 490450.92
E = 827561.74
R = 732.00'
D = 3°26'26.51"
T = 22.00'
L = 43.96'
PC STA = 15+89.11
PT STA = 16+32.72

CIRCULAR
PI STA = 16+93.31
N = 490526.88
E = 827594.13
R = 50.00'
D = 21°06'13.37"
T = 9.31'
L = 18.42'
PC STA = 16+84.00
PT STA = 17+02.41

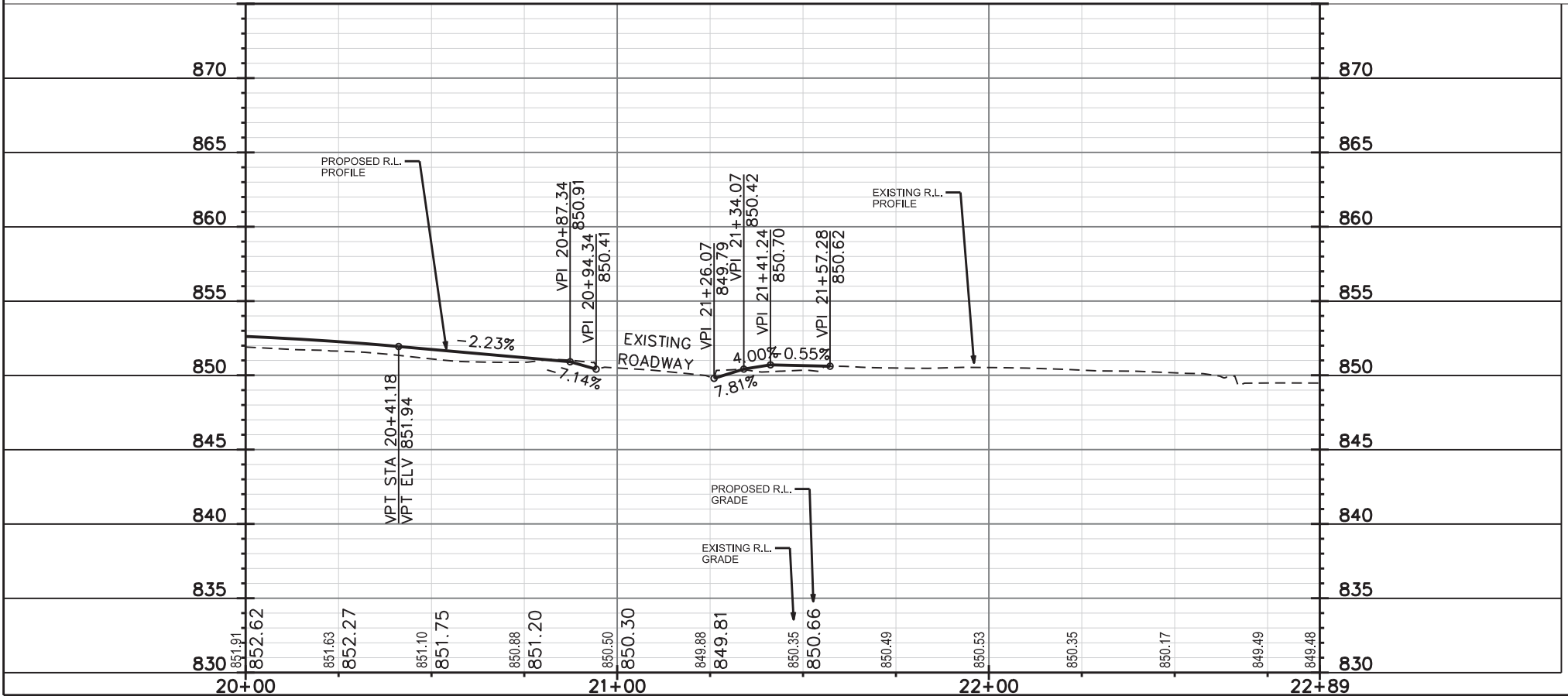
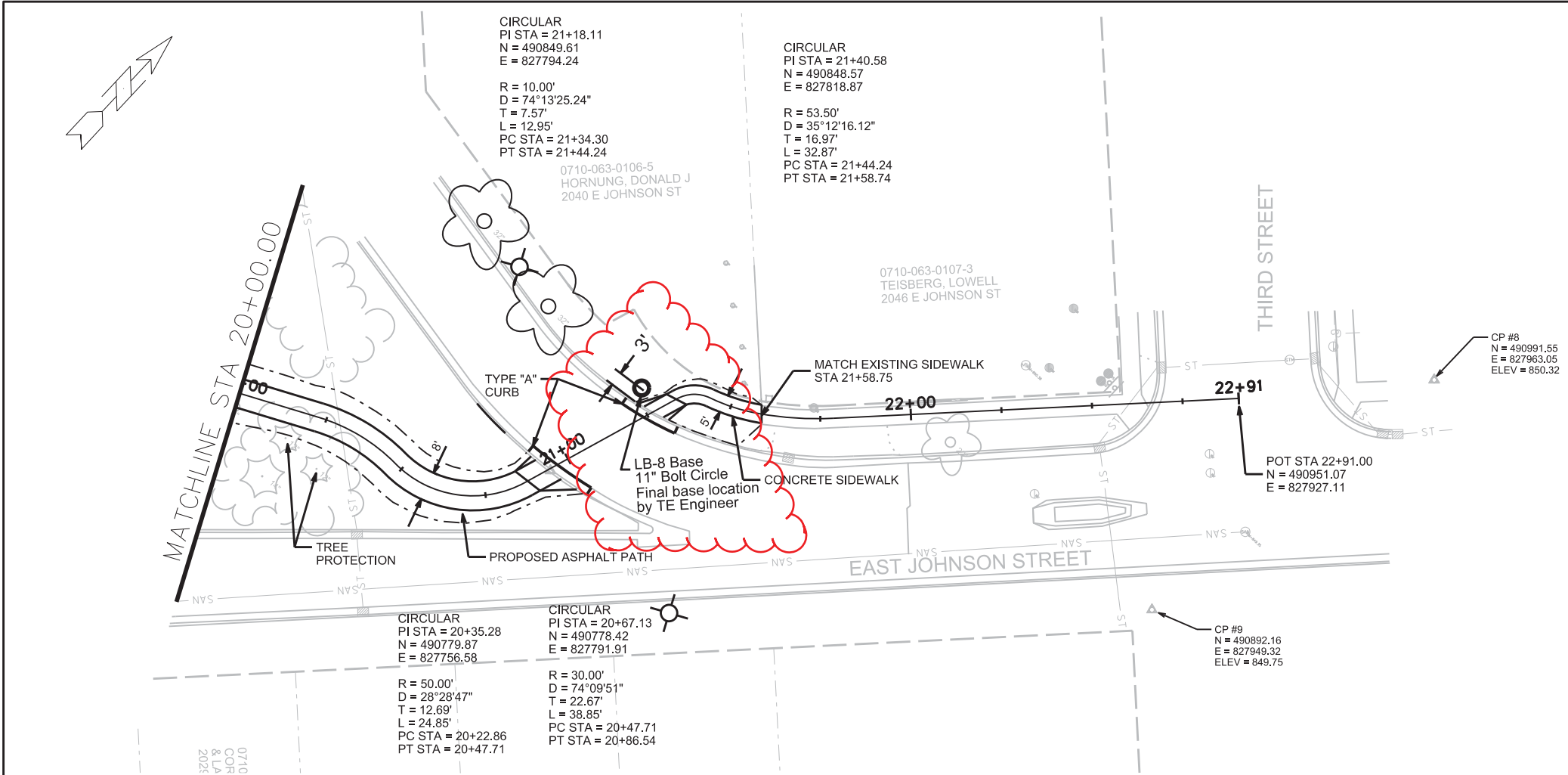
CIRCULAR
PI STA = 18+08.90
N = 490609.90
E = 827674.86
R = 12.00'
D = 62°22'36.07"
T = 7.26'
L = 13.06'
PC STA = 18+01.63
PT STA = 18+14.61

CIRCULAR
PI STA = 19+25.17
N = 490721.76
E = 827638.13
R = 70.00'
D = 82°02'48.51"
T = 60.90'
L = 100.25'
PC STA = 18+64.27
PT STA = 19+64.50



PLOT NAME: _____ PLOT SCALE: _____
REV. DATE: _____
ORIGINATOR: CITY OF MADISON, STREETS DIVISION

* REVISED 4-3-13



PLOT SCALE: _____

PLOT NAME: _____

REV. DATE: _____

ORIGINATOR: CITY OF MADISON, STREETS DIVISION