



Department of Public Works  
**City Engineering Division**

Robert F. Phillips, P.E.  
**City Engineer**

City-County Building, Room 115  
210 Martin Luther King, Jr. Boulevard  
Madison, Wisconsin 53703  
FAX 608 264 9275  
Textnet 866 704 2315  
www.cityofmadison.com

**608 266 4751**

**Assistant City Engineer**  
Michael R. Dalley, P.E.

**Principal Engineers**  
Christina M. Bachmann, P.E.  
John S. Fahrney, P.E.  
Gregory T. Fries, P.E.  
Christopher J. Petykowski, P.E.

**Facilities & Sustainability**  
Jeanne E. Hoffman, Manager  
James C. Whitney, A.I.A.

**Operations Supervisor**  
Kathleen M. Cryan

**GIS Manager**  
David A. Davis, R.L.S.

**Financial Officer**  
Steven B. Danner-Rivers

**Hydrogeologist**  
Brynn Bemis

**ADDENDUM NO. 1**

**O'SHERIDAN STREET, LAWRENCE STREET AND BRESLAND COURT**  
**ASSESSMENT DISTRICT - 2012**

**CONTRACT NO. 6788**

Revise and amend the contract document(s) and plans for the above project as stated in this addendum, otherwise the original documents shall remain in effect.

**SPECIFICATIONS:**

**REMOVE PAGE B1 AND INSERT REVISED PAGE B1** - reference to Standard Specifications for Public Works Construction – 2012 Edition.

**REMOVE PAGE E1 AND INSERT REVISED PAGE E1** - reference to Standard Specifications for Public Works Construction – 2012 Edition.

Any references made in the Special Provisions to the Standard Specifications for Public Works Construction shall be the 2012 Edition.

**PLANS:**

**REMOVE SHEETS U-4 AND U-6**

**INSERT SHEETS U-4 (REVISED 3/5/12) AND U-6 (REVISED 3/5/12):** Internal Chimney Seal removed from structure SAS#3

**PROPOSAL:**

**DELETE PAGES E-5 TO E-9**

**INSERT PAGES E-5 TO E-9 (Revised 3/5/12):** Quantity decreased for Bid Item 50771 Internal Chimney Seal

**SPECIAL PROVISIONS:**

**DELETE SECTION 105.12 COOPERATION BY THE CONTRACTOR**

**ADD SECTION 105.12 COOPERATION BY THE CONTRACTOR:**

The Contractor shall use care around existing trees, plantings, fences, walls, steps and driveways that are indicated on the plans to remain. Damage to these items during construction shall be repaired or replaced at the Contractor's expense. No trees, other than those shown on the plan to be removed, shall be cut without the approval of the Engineer and the City Forester; the abutting property owners shall be notified in accordance with the City's Administrative Procedure Memorandum No. 6-2. Excavation around trees to remain shall be minimized to avoid impact on those trees.

Wisconsin & Southern Railroad will also have work in the vicinity of this project. The Railroad will be replacing one of the bridges over Monona Bay adjacent to John Nolen Dr. This work will be performed from approximately 10 barges in the bay. The Railroad has hired Lunda Construction Co. as the general contractor for this work. During the bridge replacement project, Lunda will be loading and unloading equipment and materials to and from the barges in Monona Bay from O'Sheridan St. This work will take place from O'Sheridan St. and from the area used as a park near Monona Bay.

The initial set-up, mobilization and loading of the equipment and materials will take place prior to the start of this contract. After the start of this contract, it is anticipated that flat bed semi trucks will make periodic loads to the end of O'Sheridan St. Lunda will provide the Contractor with notice of any deliveries at least 72 hours prior to the delivery. Any equipment or materials not needed on the barges will be stored in the park area outside the limits of this project.

It is anticipated that work from the barges within Monona Bay will be completed around August 13. At that time, Lunda will begin their demobilization of the crane used on the barges, the tug, as well as the barges. The demobilization work will take place from O'Sheridan St. and the park area near the Monona Bay shoreline. This work will last approximately 4 days with an expected completion date of August 17. During the 4 days of demobilization, up to 20 to 25 flatbed semi trucks are expected to arrive on the site to haul away the equipment and materials. Lunda will provide the Contractor notice of the start of demobilization work 1 week in advance.

Luke Haun, Project Manager, Lunda Construction, may be contacted at (715) 299-0214 with any questions related to the work involving the railroad bridge.

Electronic version of these documents can be found on the City of Madison web site at:

<http://www.cityofmadison.com/business/PW/contracts/openforBid.cfm>

Please acknowledge this addendum on Page E-1 (Revised 3/6/12).



Robert F. Phillips, P.E.  
City Engineer

RFP:jmw

## SECTION B: INSTRUCTIONS TO BIDDERS

The City of Madison Standard Specifications for Public Works Construction – 2012 Edition, as supplemented and amended from time to time, forms a part of these contract documents as if attached hereto.

These standard specifications are available on the City of Madison Public Works website at [www.cityofmadison.com/Business/PW/specs.cfm](http://www.cityofmadison.com/Business/PW/specs.cfm) or by contacting City Engineering Division, Room 115, City-County Building, 210 Martin Luther King Jr. Blvd., Madison, WI 53703.

The Contractor shall review these Specifications prior to preparation of proposals for the work to be done under this contract, with specific attention to Article 102 **“BIDDING REQUIREMENTS AND CONDITIONS”** and Article 103 **“AWARD AND EXECUTION OF THE CONTRACT.”** For the convenience of the bidder, below are highlights of three subsections of the specifications.

### Section 102.1: Pre-Qualification of Bidders

In accordance with Wisconsin State Statutes 66.0901 (2) and (3), all bidders must submit to the Board of Public Works proof of responsibility on forms furnished by the City. The City requires that all bidders be qualified on a biennial basis.

Bidders must present satisfactory evidence that they have been regularly engaged in the type of work specified herein and they are fully prepared with necessary capital, materials, machinery and supervisory personnel to conduct the work to be contracted for to the satisfaction of the City. All bidders must be pre-qualified by the Board of Public Works for the type of construction on which they are bidding prior to the opening of the bid.

In accordance with Section 39.02(9)(a)1. of the Madison General Ordinances, all bidders shall submit in writing to the Affirmative Action Division Manager of the City of Madison, a Certificate of Compliance or an Affirmative Action Plan at the same time or prior to the submission of the proof of responsibility forms. The bidder shall be disqualified if the bidder fails to or refuses to, prior to opening of the bid, submit a Certificate of compliance, Affirmative Action Plan or Affirmative Action Data Update, as applicable, as defined by Section 39.02 of the Madison General Ordinances (entitled Affirmative Action) and as required by Section 102.11 of the Standard Specifications.

### Section 102.4: Proposals

No bid will be accepted that does not contain an adequate or reasonable price for each and every item named in the Schedule of Unit Prices.

A lump sum bid for the work in accordance with the plans and specifications is required. The lump sum bid must be the same as the total amounts bid for the various items and it shall be inserted in the space provided.

All papers bound with or attached to the proposal form are considered a part thereof and must not be detached or altered when the proposal is submitted. The plans, specifications and other documents designated in the proposal form will be considered a part of the proposal whether attached or not.

A proposal submitted by an individual shall be signed by the bidder or by a duly authorized agent. A proposal submitted by a partnership shall be signed by a member/partner or by a duly authorized agent thereof. A proposal submitted by a corporation shall be signed by an authorized officer or duly authorized registered agent of such corporation, and the proposal shall show the name of the State under the laws of

SECTION E: PROPOSAL

O'SHERIDAN STREET, LAWRENCE STREET AND BRESLAND COURT ASSESSMENT  
DISTRICT - 2012  
CONTRACT NO. 6788

Bidder must state a Unit Price and Total Bid for each item. The Total Bid for each item must be the product of quantity, by Unit Price. The Grand Total must be the sum of the Total Bids for the various items. In case of multiplication errors or addition errors, the Grand Total with corrected multiplication and/or addition shall determine the Grand Total bid for each contract. The Unit Price and Total Bid must be entered numerically in the spaces provided. All words and numbers shall be written in ink.

1. The undersigned having familiarized himself/herself with the Contract documents, including Advertisement for Bids, Instructions to Bidders, Form of Proposal, City of Madison Standard Specifications for Public Works Construction - 2012 Edition thereto, Form of Agreement, Form of Bond, and Addenda issued and attached to the plans and specifications on file in the office of the City Engineer, hereby proposes to provide and furnish all the labor, materials, tools, and expendable equipment necessary to perform and complete in a workmanlike manner the specified construction on this project for the City of Madison; all in accordance with the plans and specifications as prepared by the City Engineer, including Addenda to the Contract Nos. \_\_\_\_\_ through \_\_\_\_\_ issued thereto, at the prices for said work as contained in this proposal.
2. If awarded the Contract, we will initiate action within seven (7) days after notification or in accordance with the date specified in the contract to begin work and will proceed with diligence to bring the project to full completion within the number of work days allowed in the Contract or by the calendar date stated in the Contract.
3. The undersigned Bidder or Contractor certifies that he/she is not a party to any contract, combination in form of trust or otherwise, or conspiracy in restraint of trade or commerce or any other violation of the anti-trust laws of the State of Wisconsin or of the United States, with respect to this bid or contract or otherwise.
4. Accompanying this Proposal is  Bid Bond or  Certified Check in the amount of \_\_\_\_\_ Dollars (\$ \_\_\_\_\_) or  a Certificate of Biennial Bid Bond as required by the Advertisement for Bids.  
*(IF BID BOND IS USED, IT SHALL BE SUBMITTED ON THE FORMS PROVIDED BY THE CITY. FAILURE TO DO SO MAY RESULT IN REJECTION OF THE BID).*
5. I hereby certify that all statements herein are made on behalf of \_\_\_\_\_  
(name of corporation, partnership, or person submitting bid)  
a corporation organized and existing under the laws of the State of \_\_\_\_\_ a  
partnership consisting of \_\_\_\_\_; an individual trading as \_\_\_\_\_; of the  
City of \_\_\_\_\_; State of \_\_\_\_\_; that I have examined and carefully prepared this Proposal,  
from the plans and specifications and have checked the same in detail before submitting this Proposal;  
that I have fully authority to make such statements and submit this Proposal in (its, their) behalf; and that  
the said statements are true and correct.

\_\_\_\_\_  
SIGNATURE

\_\_\_\_\_  
TITLE, IF ANY

Sworn and subscribed to before me this  
\_\_\_\_\_ day of \_\_\_\_\_, 20\_\_\_\_

\_\_\_\_\_  
(Notary Public or other officer authorized to administer oaths)

My Commission Expires \_\_\_\_\_

Bidders shall not add any conditions or qualifying statements to this Proposal.

## PROPOSAL

NAME OF BIDDER

O'SHERIDAN STREET, LAWRENCE STREET AND BRESLAND COURT ASSESSMENT  
DISTRICT - 2012

CONTRACT NO. 6788

ITEM	TYPE OF WORK	ESTIMATED QUANTITIES		UNIT PRICE BID	TOTAL BID
<b>STREET ACCOUNT NO. CS53-58250-810355-00-53W1188</b>					
10701	TRAFFIC CONTROL	1.00	LUMP SUM		
10801	ROOT CUTTING - CURB AND GUTTER (UNDISTRIBUTED)	140.00	L.F.		
10901	ROOT CUTTING - SIDEWALK (UNDISTRIBUTED)	90.00	L.F.		
10911	MOBILIZATION	1.00	LUMP SUM		
20101	EXCAVATION CUT	4,180.00	C.Y.		
20130	UNDERDRAIN	795.00	L.F.		
20219	BREAKER RUN	1,650.00	TON		
20221	TOPSOIL	3,150.00	S.Y.		
20140	GEOTEXTILE FABRIC TYPE SAS (NON-WOVEN)	3,200.00	S.Y.		
20301	SAWCUT CONCRETE PAVEMENT, FULL DEPTH	165.00	L.F.		
20321	REMOVE CONCRETE PAVEMENT	5,850.00	S.Y.		
20322	REMOVE CONCRETE CURB & GUTTER	4,220.00	L.F.		
20323	REMOVE CONCRETE SIDEWALK & DRIVE	12,250.00	S.F.		
20403	GRUBBING	122.00	I.D.		
20701	TERRACE SEEDING	3,150.00	S.Y.		
30201	TYPE 'A' CONCRETE CURB & GUTTER	3,950.00	L.F.		
30203	TYPE 'X' CONCRETE CURB & GUTTER	150.00	L.F.		
30208	HAND FORMED CONCRETE CURB AND GUTTER (TREE LOCATIONS)	130.00	L.F.		
30301	5" CONCRETE SIDEWALK	8,750.00	S.F.		
30302	7" CONCRETE SIDEWALK AND DRIVE	4,550.00	S.F.		
30340	CURB RAMP DETECTABLE WARNING FIELD	96.00	S.F.		

**O'SHERIDAN STREET, LAWRENCE STREET AND BRESLAND COURT ASSESSMENT  
DISTRICT - 2012**

**CONTRACT NO. 6788**

ITEM	TYPE OF WORK	ESTIMATED QUANTITIES		UNIT PRICE BID	TOTAL BID
40101	CRUSHED AGGREGATE BASE COURSE GRADATION NO. 1	1,750.00	TON		
40102	CRUSHED AGGREGATE BASE COURSE GRADATION NO. 2	2,850.00	TON		
40201	HMA PAVEMENT TYPE E-0.3	1,175.00	TON		
40231	ASPHALT DRIVE & TERRACE (UNDISTRIBUTED)	50.00	S.Y.		
<b>STREET ACCOUNT NO. CS53-58270-810355-00-53W1188</b>					
20217	CLEAR STONE	300.00	TON		
21001	EROSION CONTROL PLAN AND IMPLEMENTATION	1.00	LUMP SUM		
21002	EROSION CONTROL INSPECTION	4.00	EACH		
21011	CONSTRUCTION ENTRANCE	2.00	EACH		
21012	STREET CONSTRUCTION ENTRANCE BERM	2.00	EACH		
21013	STREET SWEEPING	1.00	LUMP SUM		
21021	SILT FENCE COMPLETE (UNDISTRIBUTED)	200.00	L.F.		
21024	SILT SOCK COMPLETE	200.00	L.F.		
21042	INLET PROTECTION TYPE D - PROVIDE & INSTALL	13.00	EACH		
21043	INLET PROTECTION TYPE D - MAINTAIN	39.00	EACH		
21044	INLET PROTECTION TYPE D - REMOVE	13.00	EACH		
21046	INLET PROTECTION TYPE D MODIFIED-PROVIDE & INSTALL	2.00	EACH		
21047	INLET PROTECTION TYPE D MODIFIED-MAINTAIN	6.00	EACH		
21048	INLET PROTECTION TYPE D MODIFIED-REMOVE	2.00	EACH		
21052	POLYMER STABILIZATION	500.00	S.Y.		
50211	SELECT BACKFILL FOR STORM	275.00	T.F.		
50411	12 INCH RCP STORM SEWER PIPE	275.00	L.F.		
50741	TYPE H INLET	5.00	EACH		

**O'SHERIDAN STREET, LAWRENCE STREET AND BRESLAND COURT ASSESSMENT  
DISTRICT - 2012**

**CONTRACT NO. 6788**

ITEM	TYPE OF WORK	ESTIMATED QUANTITIES		UNIT PRICE BID	TOTAL BID
<b>STORM ACCOUNT NO. ESTM-58270-810381-00-53W1188</b>					
10702	TRAFFIC CONTROL FOR STORM SEWER INSTALLATION	1.00	LUMP SUM		
10912	MOBILIZATION FOR STORM SEWER INSTALLATION	1.00	LUMP SUM		
20313	REMOVE INLET	6.00	EACH		
20314	REMOVE PIPE (UNDISTRIBUTED)	30.00	L.F.		
20336	PIPE PLUG	8.00	EACH		
50225	TRENCH PATCH TYPE III	62.00	T.F.		
50499	CONCRETE COLLAR	1.00	EACH		
50792	STORM SEWER TAP	3.00	EACH		
50801	UTILITY LINE OPENING (ULO)	2.00	EACH		
90030	4" PVC STORM SEWER	20.00	L.F.		
90031	TURBIDITY BARRIER	40.00	L.F.		
<b>STORM WATER QUALITY ACCOUNT NO. ESTM-58270-810551-00-53W1188</b>					
50763	TERRACE INLET TYPE III W/ SUMP	1.00	EACH		
<b>SANITARY SEWER ACCOUNT NO. ES01-58275-810332-00-53W1188</b>					
10914	MOBILIZATION FOR SANITARY SEWER	1.00	LUMP SUM		
20311	REMOVE SEWER ACCESS STRUCTURE	8.00	EACH		
20336	PIPE PLUG	60.00	EACH		
50103	RECONSTRUCT BENCH AND FLOWLINES	2.00	EACH		
50212	SELECT BACKFILL FOR SANITARY SEWER	3,638.00	T.F.		
50225	TRENCH PATCH TYPE III	25.00	T.F.		
50301	8 INCH PVC SANITARY SEWER PIPE	1,891.00	L.F.		
50353	SANITARY SEWER LATERAL	1,747.00	L.F.		
50354	RECONNECT	52.00	EACH		

**O'SHERIDAN STREET, LAWRENCE STREET AND BRESLAND COURT ASSESSMENT  
DISTRICT - 2012  
CONTRACT NO. 6788**

ITEM	TYPE OF WORK	ESTIMATED QUANTITIES		UNIT PRICE BID	TOTAL BID
50361	WASTEWATER CONTROL	1.00	LUMP SUM		
50390	SEWER ELECTRONIC MARKERS	104.00	EACH		
50701	4' DIA SANITARY SAS	6.00	EACH		
50771	INTERNAL CHIMNEY SEAL	2.00	EACH		
50780	CLEANOUT (UNDISTRIBUTED)	2.00	EACH		
50791	SANITARY SEWER TAP	2.00	EACH		
<b>SANITARY SEWER ACCOUNT NO. ES01-58275-810332-00-53W1188 (50%) &amp; WATER ACCOUNT NO. EW01-58273-810455-00-53W1188 (50%)</b>					
50202	DEWATERING TYPE II	1.00	LUMP SUM		
<b>WATER ACCOUNT NO. EW01-58273-810455-00-53W1188</b>					
10703	TRAFFIC CONTROL FOR WATER MAIN INSTALLATION	1.00	LUMP SUM		
10913	MOBILIZATION FOR WATER MAIN INSTALLATION	1.00	LUMP SUM		
70002	FURNISH AND INSTALL 6 INCH PIPE & FITTINGS	108.00	L.F.		
70003	FURNISH AND INSTALL 8 INCH PIPE & FITTINGS	2,106.00	L.F.		
70407	FURNISH AND INSTALL HYDRANT	5.00	EACH		
70408	SELECT FILL - SAND FOR WATER	2,214.00	L.F.		
70413	FURNISH AND INSTALL STYROFOAM	32.00	L.F.		
70414	CUT OFF EXISTING WATER MAIN	3.00	EACH		
70415	ABANDON WATER VALVE BOX	7.00	EACH		
70416	ABANDON HYDRANT	5.00	EACH		
70417	ABANDON WATER VALVE ACCESS STRUCTURE	4.00	EACH		
70428	FURNISH AND INSTALL 6 INCH VALVE	5.00	EACH		
70429	FURNISH AND INSTALL 8 INCH VALVE	3.00	EACH		
70440	EXTEND AND RECONNECT SERVICE LATERAL - 1 INCH	320.00	L.F.		
70443	DISCONNECT / RECONNECT SERVICE LATERAL - 1 INCH	17.00	EACH		



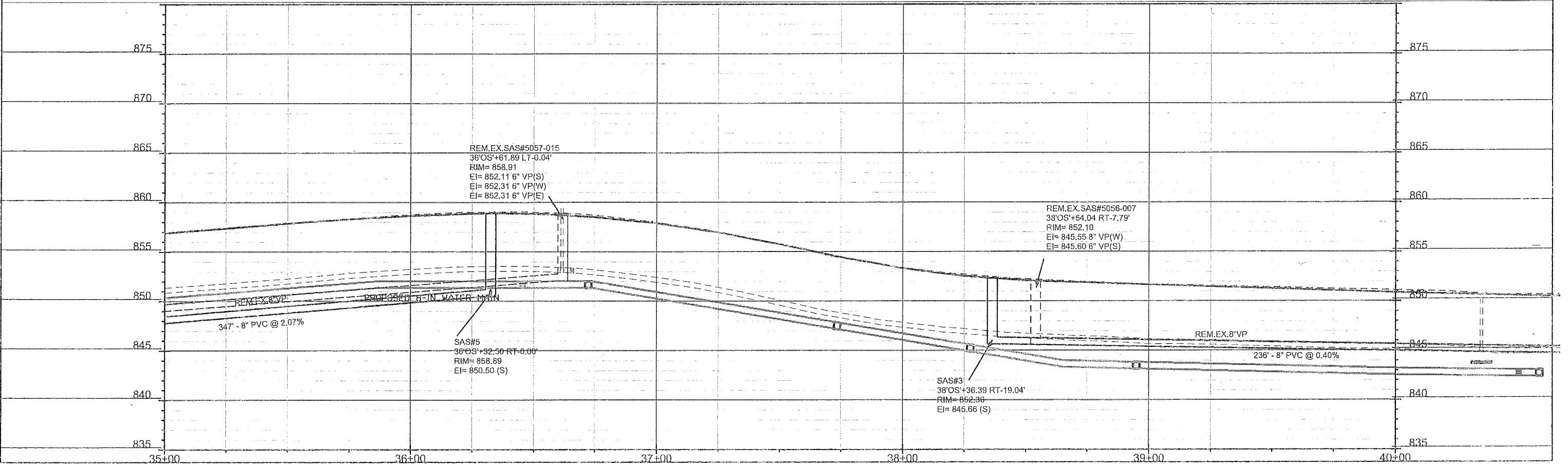
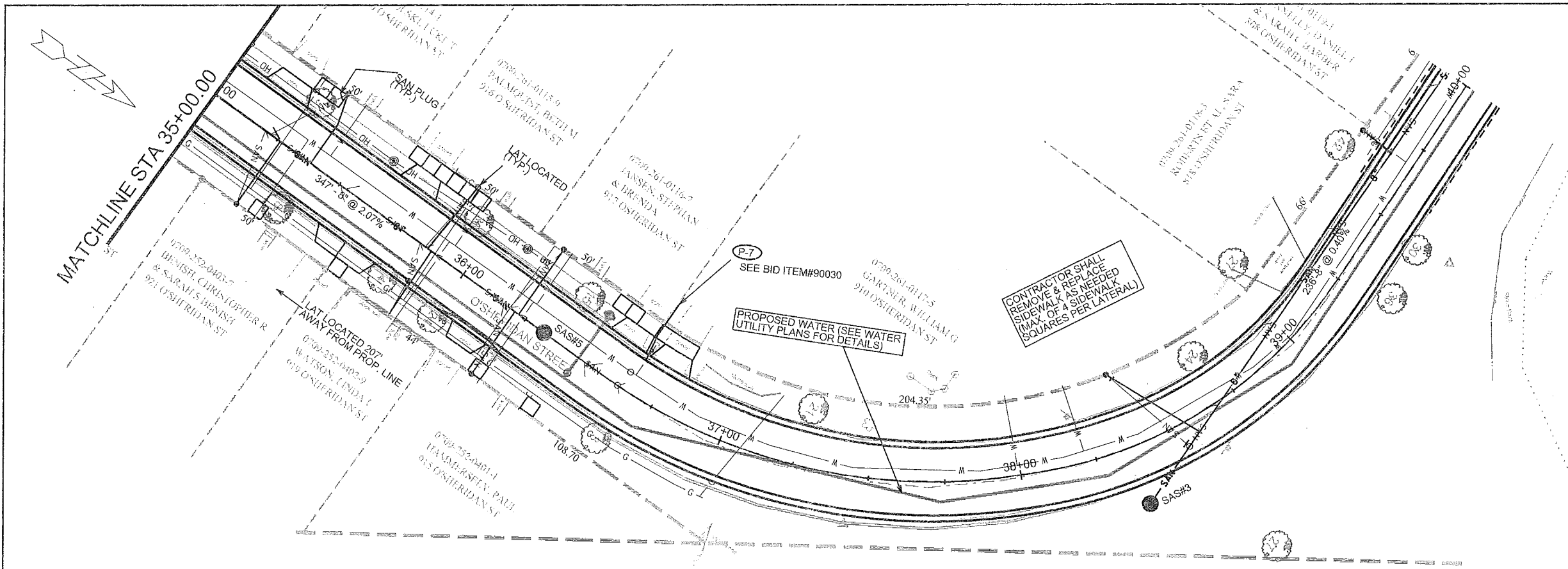
**O'SHERIDAN STREET, LAWRENCE STREET AND BRESLAND COURT ASSESSMENT  
DISTRICT - 2012**

**CONTRACT NO. 6788**

ITEM	TYPE OF WORK	ESTIMATED QUANTITIES		UNIT PRICE BID	TOTAL BID
70450	FURNISH AND INSTALL CURB BOX	5.00	EACH		
70452	ADJUST WATER SERVICE BOX	5.00	EACH		
70453	ABANDON EXISTING CURB BOX	13.00	EACH		
70454	REPLACE COPPER SERVICE LATERAL - 1 INCH	135.00	L.F.		
70455	PIPE PLUG FOR WATER MAIN INSTALLATION	2.00	EACH		
70456	FURNISH EXCAVATION AND DITCH FOR LIVE TAP	2.00	EACH		

TOTAL

SEE SHEET U-2 FOR LAWRENCE - O'SHERIDAN INTERSECTION DESIGN



PLOT SCALE:

PLOT NAME:

REV. DATE:

ORIGINATOR: CITY OF MADISON, STREETS DIVISION

# SANITARY SCHEDULE

## ALIGNMENT CODES:

'L' = LAWRENCE ST  
'OS' = O'SHERIDAN ST  
'B' = BRESLAND CT

LAWRENCE ST, O'SHERIDAN ST, BRESLAND CT RECONSTRUCT - 2012	SHEET NO. U-6
PROJECT NO. 53W1188	
SANITARY SEWER SCHEDULE CITY OF MADISON	

### PROPOSED SANITARY STRUCTURES

SAS NO.	STATION	LOCATION (OFFSET)	TOP OF CASTING	E.I.	DEPTH	NOTES
SAS#1	14'L'+25.00	CL	855.67	843.16	12.51	
SAS#2	18'L'+20.11	CL	850.70	844.62	6.08	INSTALL CHIMNEY SEAL
SAS#3	38'OS'+36.39	RT-19.40	852.36	845.66	6.70	INSTALL CHIMNEY SEAL
SAS#4	32'OS'+85.29	RT-.51	852.86	843.23	9.63	
SAS#5	36'OS'+32.50	LT-.04	858.89	850.50	8.39	
SAS#6	52'B'+75.07	RT-2.00	850.43	844.43	6.00	INSTALL CHIMNEY SEAL

### PROPOSED SANITARY PIPES

FROM SAS (DWNSTRM)	TO SAS (UPSTREAM)	EI # (DWNSTRM)	EI # (UPSTRM)	LENGTH (FT)	SLOPE (%)	SIZE (DIA)	PVC TYPE	NOTES:
SAS #5057-011	SAS#1	842.58	843.56	390	0.25%	8"	SDR-35	
SAS#1	SAS#2	843.61	844.62	395	0.26%	8"	SDR-35	
SAS#2	SAS#3	844.72	845.66	236	0.40%	8"	SDR-35	
SAS# 5057-012	SAS#4	842.24	843.23	248	0.40%	8"	SDR-35	
SAS#4	SAS#5	843.33	850.50	347	2.07%	8"	SDR-35	
SAS#4	SAS#6	843.33	844.43	275	0.40%	8"	SDR-35	

\*REVISED 3/5/12 MKC

### SANITARY SEWER STRUCTURE REMOVALS

STRUC. ID NO.	STATION	LOCATION (OFFSET)	NOTES
5057-010	12'L'+68.64	LT-.08	
5057-024	14'L'+98.62	RT-.09	
5056-008	18'L'+20.11	CL	
5056-007	38'OS'+54.04	RT-7.79	
5057-013	32'OS'+85.29	RT-.51	
5057-014	34'OS'+83.98	LT-.05	
5057-015	36'OS'+61.89	LT-.04	
5057-018	52'B'+95.41	LT-.65	

### SANITARY SEWER PIPE REMOVALS

REMOVE FROM	REMOVE TO	LENGTH (FT)	PAID (Y/N)	NOTES
5057-011	5057-010	233	N	
5057-010	5057-024	230	N	
5057-024	5056-008	321	N	
5056-008	5056-007	214	N	
5057-012	5057-013	248	N	
5057-013	5057-014	199	N	
5057-014	5057-015	178	N	
5057-013	5057-018	195	N	

PLOT SCALE: 1"=40' REV. DATE: 03/05/12