

Madison, Wisconsin

# CITY OF MADISON

## CITY ENGINEERING DIVISION

### DEPARTMENT OF PUBLIC WORKS

# PLAN OF PROPOSED IMPROVEMENT

PUBLIC IMPROVEMENT PROJECT APPROVED

AUGUST 7, 2012

BY THE COMMON COUNCIL OF MADISON, WISCONSIN

PUBLIC IMPROVEMENT DESIGN APPROVED BY:

*[Signature]* 8/3/12  
City Engineer Date

#### INDEX OF SHEETS

SHEET NO.	TITLE
1	DETAILS
D1	ELECTRICAL PLAN
E1	PAVEMENT MARKING
M1-M2	STREET LAYOUT
P1	STREET GRADES
P2	TRAFFIC CONTROL
TC1-TC2	UTILITY PLAN
U1	

## PARK STREET, FISH HATCHERY INTERSECTION IMPROVEMENTS

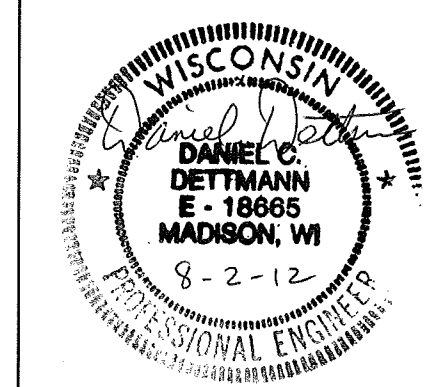
CITY PROJECT NO. 53W1471

CITY CONTRACT NO. 6926

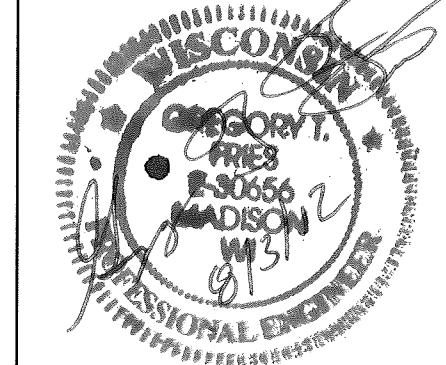
STREET DESIGNED BY:



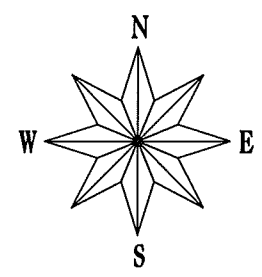
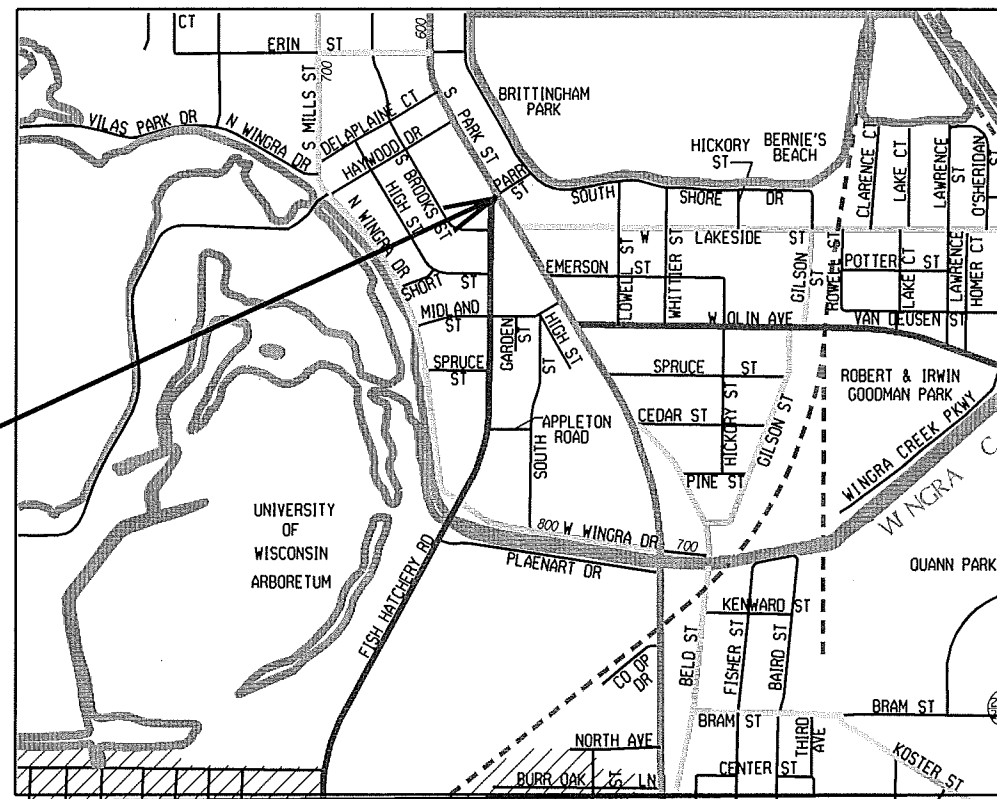
ELECTRICAL DESIGNED BY:



STORM SEWER DESIGNED BY:



CONVENTIONAL SIGNS	
FIELD VERIFY ALL UTILITY LOCATIONS	
GAS	— G —
STORM SEWER	— ST —
SANITARY SEWER	— SAN —
WATER	— W —
OVERHEAD ELECTRIC	— OH —
POWER POLE	⊕
ADA COMPLIANT RAMP W/ DETECTABLE WARNING FIELD	[Symbol]
COMBUSTIBLE FLUIDS	[Symbol]



## CONSTRUCTION PROJECT LOCATION

NOTES:

ALL GUTTERS SHALL DRAIN WITH A MINIMUM GRADE OF 0.50% TOWARD STORM SEWER INLETS.

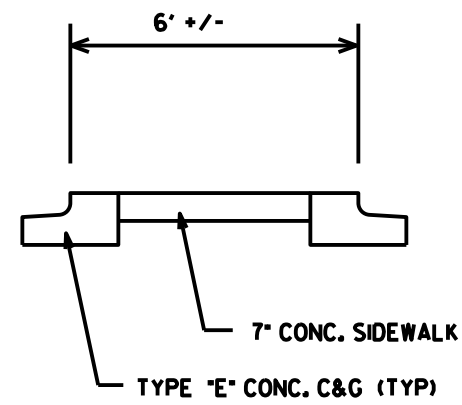
SIDEWALK RAMPS AND CURB THRU SIDEWALK RAMPS SHALL HAVE A MAXIMUM SLOPE OF 1" PER 12". SIDEWALK AND CURB RAMPS SHALL BE CONSTRUCTED WITH A SIDE SLOPE OF 2.00%. SIDEWALK SHALL HAVE A MINIMUM LONGITUDINAL SLOPE OF 0.50% AND A MAXIMUM LONGITUDINAL SLOPE OF 5.00% EXCEPT WHERE STREET GRADES EXCEED 5.00%.

EARTH WORK SUMMARY:  
EXCAVATION CUT (MEASURED PLAN QUANTITY)..... 40 C.Y.

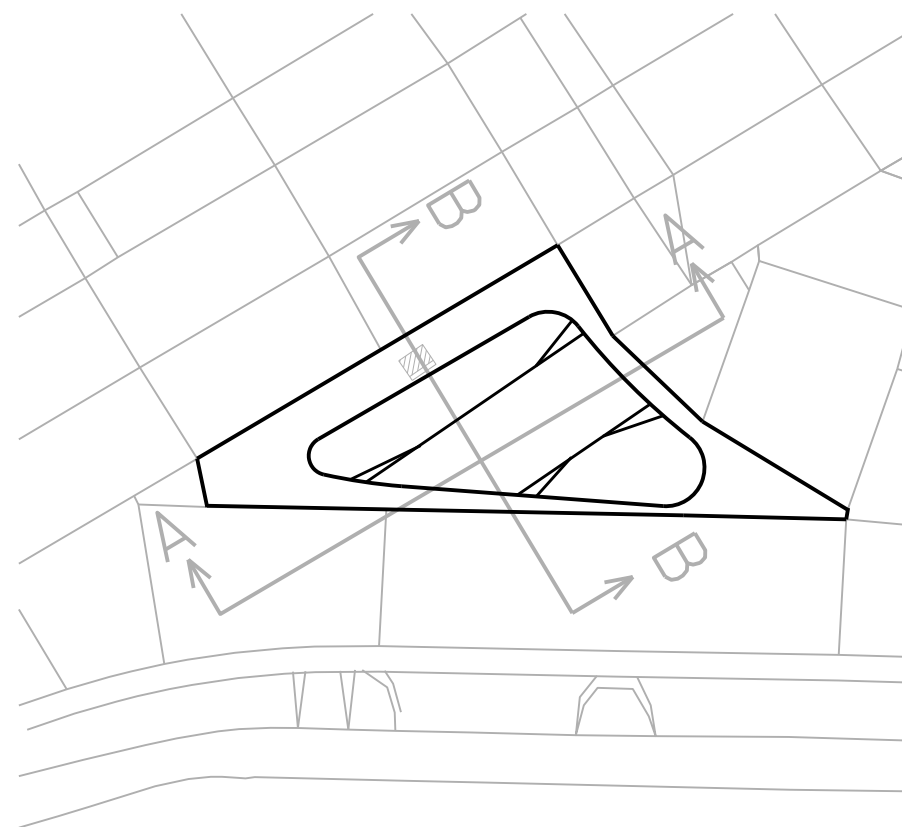
PLOT SCALE: \_\_\_\_\_ PLOT NAME: \_\_\_\_\_ REV. DATE: \_\_\_\_\_ ORIGINATOR: CITY OF MADISON - STREETS DIVISION

DETAILS

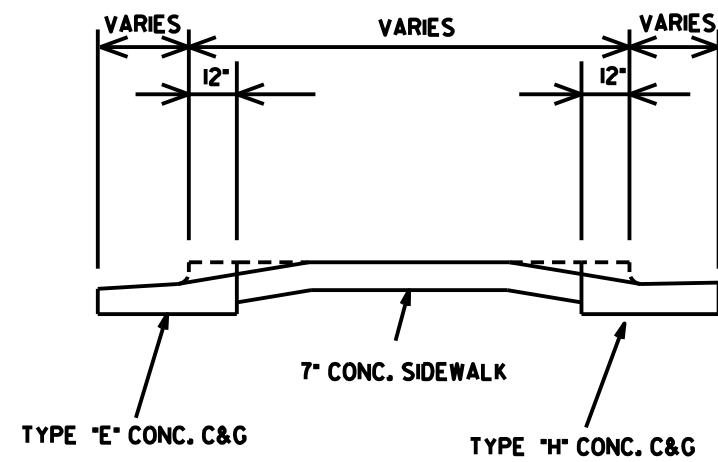
PARK ST. FISH HATCHERY  
INTER. IMPROVEMENT-2012 CITY OF MADISON



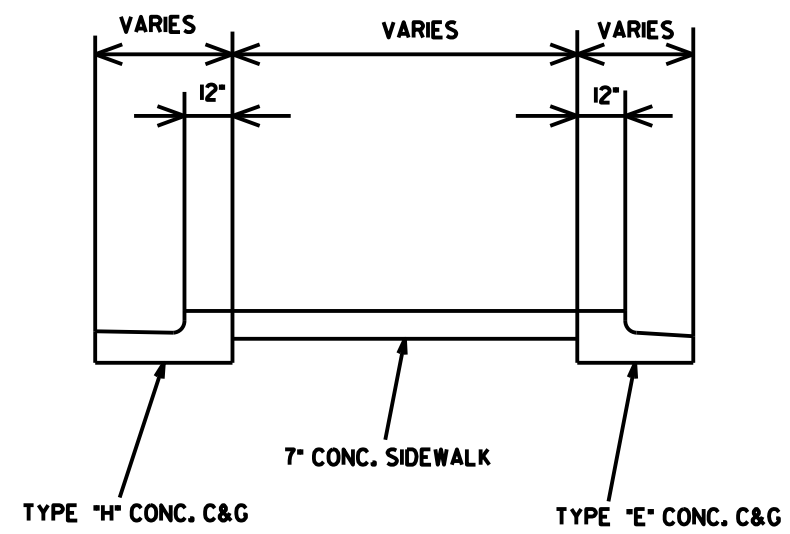
MEDIAN DETAIL



ISLAND DETAIL



SECTION A-A



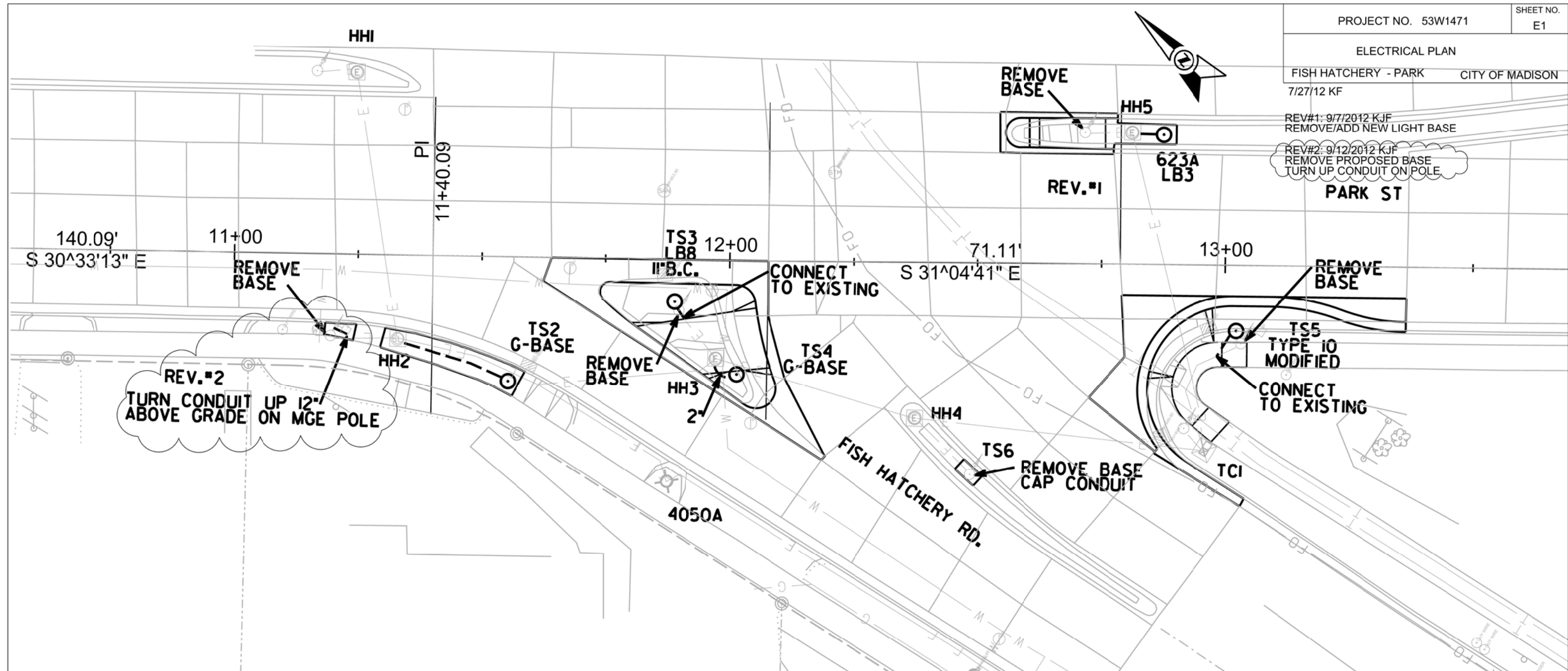
SECTION B-B

LEVELS ON - 1,2,3,4,5,6,7,8,9,10,11,12,13,14,15,16,17,18,19,20,21,22,23,24,25,26,27,28,29,30,31,32,33,34,35,36,37,38,39,40,41,42,43,44,45,46,47,48,49,50,51,52,53,54,55,56,57,58,59,60,61,62,63

ORIGINATOR: \_\_\_\_\_  
REV. DATE: \_\_\_\_\_  
PLOT NAME: \_\_\_\_\_  
PLOT SCALE: \_\_\_\_\_

REV#1: 9/7/2012 KJF  
REMOVE/ADD NEW LIGHT BASE

REV#2: 9/12/2012 KJF  
REMOVE PROPOSED BASE  
TURN UP CONDUIT ON POLE



REV.#2  
TURN CONDUIT UP 12"  
ABOVE GRADE ON MGE POLE

REV#2: 9/12/2012 KJF  
REMOVE PROPOSED BASE  
TURN UP CONDUIT ON POLE

**GENERAL ELECTRIC NOTES:**

1. ALL LOCATIONS ARE APPROXIMATE. THE TRAFFIC ENGINEER SHALL APPROVE FINAL LOCATIONS, INCLUDING SETBACK, IN THE FIELD AFTER CONTRACTOR SURVEYS STAKING. THE CONTRACTOR SHALL NOTIFY DAN DETTMANN (266-6536) CITY TRAFFIC ENGINEERING, AT LEAST 24-HOURS IN ADVANCE OF NEEDING CONDUIT OR BASE LOCATIONS MARKED.
2. BASES INSTALLED IN TERRACE OR ISLAND SHALL BE 4' FROM FACE OF CURB UNLESS OTHERWISE NOTED.
3. ALL CONDUIT SHALL BE PVC, SCHEDULE 40. PULL WIRE REQUIRED AS PER STANDARD SPECIFICATIONS.
4. THE CONTRACTOR SHALL CALL MIKE CHRISTOPH (266-4767) AT THE TRAFFIC ENGINEERING SHOP AT LEAST 24-HOURS IN ADVANCE OF POURING BASES OR BURYING CONDUIT TO ARRANGE FOR INSPECTION. ANY WORK COMPLETED WITHOUT INSPECTION IS SUBJECT TO REJECTION.
5. THE CONTRACTOR SHALL ARRANGE FOR PICK UP OF THE FOLLOWING CITY FURNISHED MATERIALS, WHICH SHOULD BE ARRANGED FOR PICKUP BY CALLING DENNIS ROWE, TRAFFIC ENGINEERING SHOP AT (266-9034) AT LEAST 24-HOURS PRIOR TO NEEDING MATERIALS.
  - 3/4" x 24" ANCHOR BOLTS - 2 SETS OF 4
  - 1"x40" ANCHOR BOLTS - 1SET OF 4
  - 1-1/4"x48" ANCHOR BOLTS - 1SET OF 4
  - MONOTUBE TEMPLATE AND SET OF 6 ANCHOR BOLTS

**LEGEND**

- ⊙ BASE (SIZE NOTED)
- INSTALL 2" PVC (OR MATCH EXISTING)
- E— EXISTING CONDUIT
- ⊙ EXISTING SIGNAL
- ⊠ EXISTING ELECTRICAL HANDHOLE
- ⊠ EXISTING CONTROLLER
- ⊙ EXISTING STREETLIGHT

PLOT SCALE:

PLOT NAME:

REV. DATE:

ORIGINATOR: CITY OF MADISON, TRAFFIC ENG. DIV.

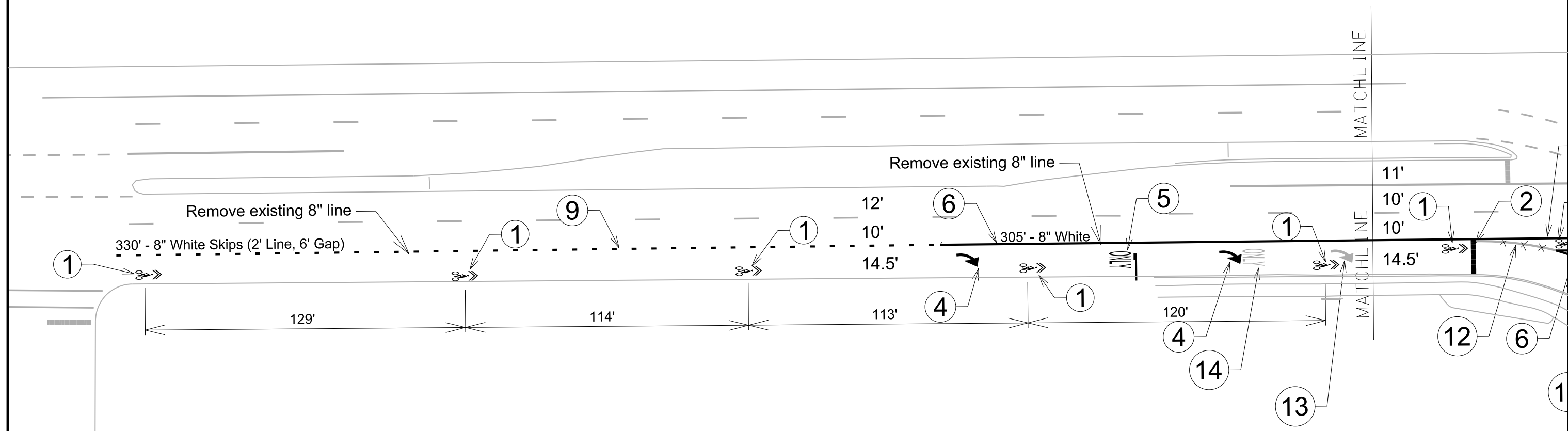


PLOT SCALE:

PLOT NAME:

REV. DATE:

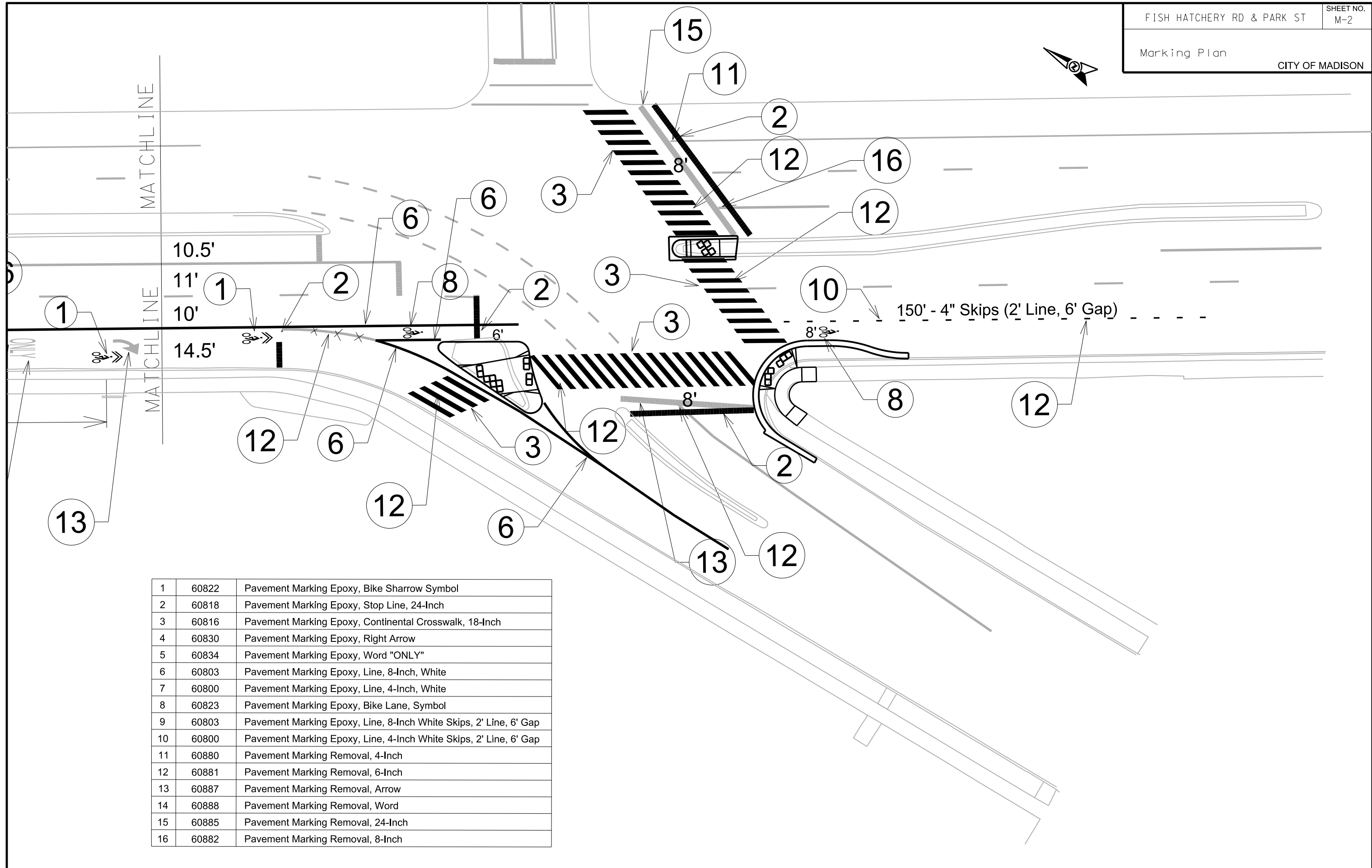
ORIGINATOR: CITY OF MADISON, TRAFFIC ENG. DIV.



1	60822	Pavement Marking Epoxy, Bike Sharrow Symbol
2	60818	Pavement Marking Epoxy, Stop Line, 24-Inch
3	60816	Pavement Marking Epoxy, Continental Crosswalk, 18-Inch
4	60830	Pavement Marking Epoxy, Right Arrow
5	60834	Pavement Marking Epoxy, Word "ONLY"
6	60803	Pavement Marking Epoxy, Line, 8-Inch, White
7	60800	Pavement Marking Epoxy, Line, 4-Inch, White
8	60823	Pavement Marking Epoxy, Bike Lane, Symbol
9	60803	Pavement Marking Epoxy, Line, 8-Inch White Skips, 2' Line, 6' Gap
10	60800	Pavement Marking Epoxy, Line, 4-Inch White Skips, 2' Line, 6' Gap
11	60880	Pavement Marking Removal, 4-Inch
12	60881	Pavement Marking Removal, 6-Inch
13	60887	Pavement Marking Removal, Arrow
14	60888	Pavement Marking Removal, Word



PLOT SCALE:  
 PLOT NAME:  
 REV. DATE:  
 ORIGINATOR: CITY OF MADISON, TRAFFIC ENG. DIV.

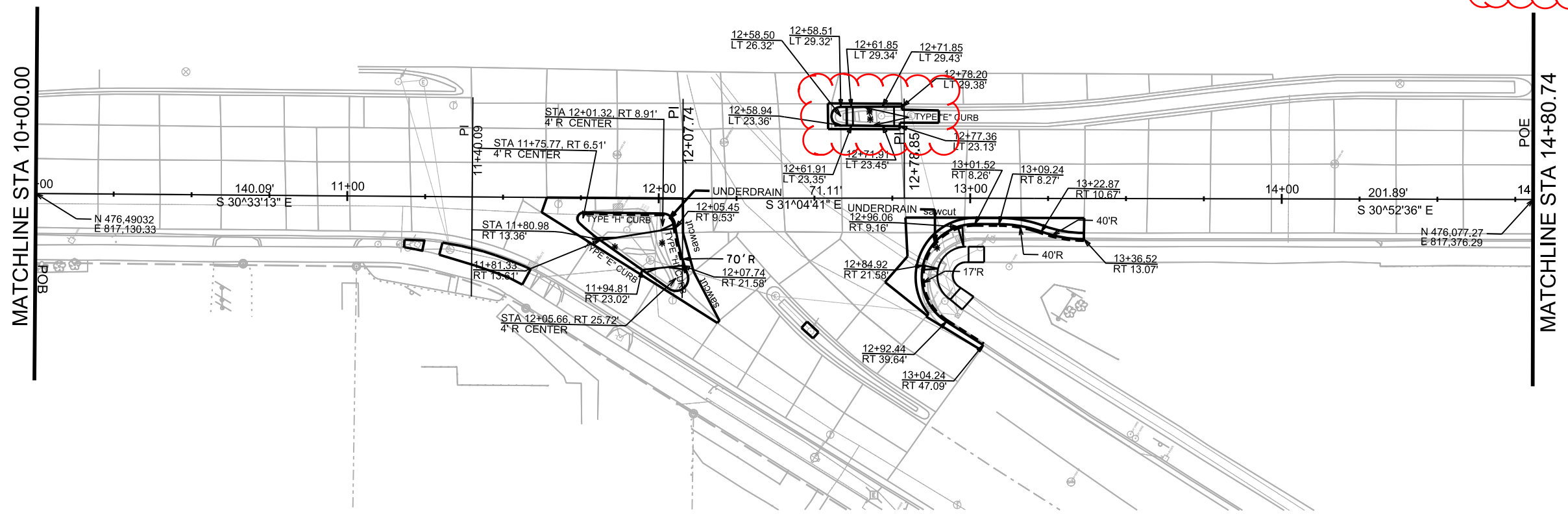
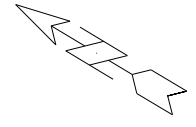


1	60822	Pavement Marking Epoxy, Bike Sharrow Symbol
2	60818	Pavement Marking Epoxy, Stop Line, 24-Inch
3	60816	Pavement Marking Epoxy, Continental Crosswalk, 18-Inch
4	60830	Pavement Marking Epoxy, Right Arrow
5	60834	Pavement Marking Epoxy, Word "ONLY"
6	60803	Pavement Marking Epoxy, Line, 8-Inch, White
7	60800	Pavement Marking Epoxy, Line, 4-Inch, White
8	60823	Pavement Marking Epoxy, Bike Lane, Symbol
9	60803	Pavement Marking Epoxy, Line, 8-Inch White Skips, 2' Line, 6' Gap
10	60800	Pavement Marking Epoxy, Line, 4-Inch White Skips, 2' Line, 6' Gap
11	60880	Pavement Marking Removal, 4-Inch
12	60881	Pavement Marking Removal, 6-Inch
13	60887	Pavement Marking Removal, Arrow
14	60888	Pavement Marking Removal, Word
15	60885	Pavement Marking Removal, 24-Inch
16	60882	Pavement Marking Removal, 8-Inch

LAYOUT

PARK/FISH HATCHERY CITY OF MADISON

REV 9/11/12 LKH ADD. CONC. REPL. IN MEDIAN  
DUE TO ADD. ELEC. WORK



PLOT SCALE: \_\_\_\_\_

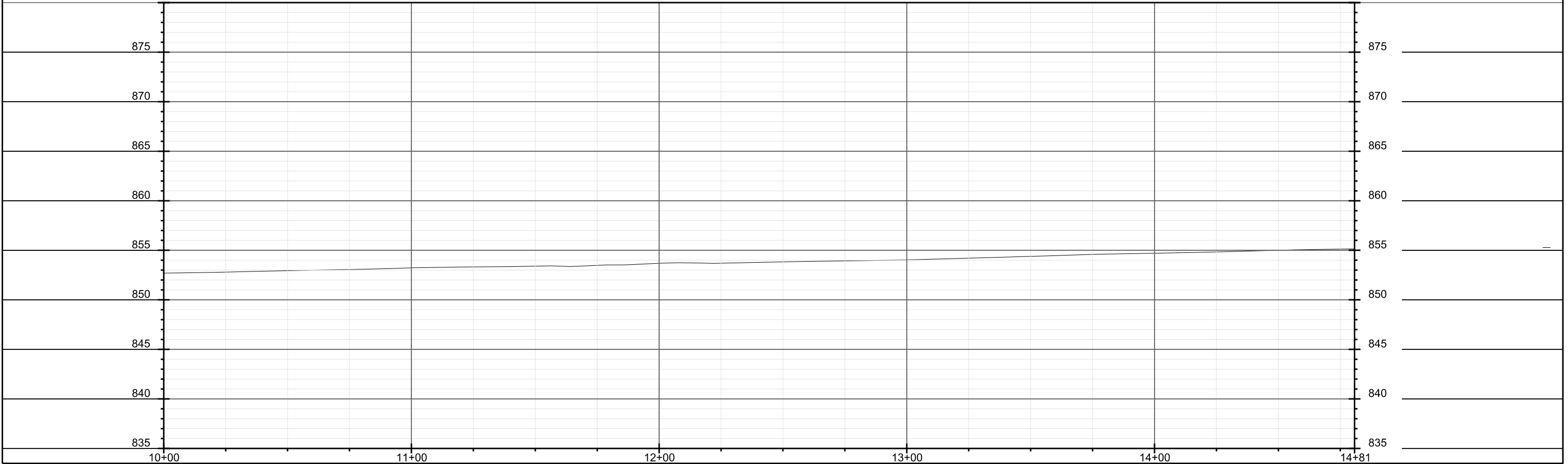
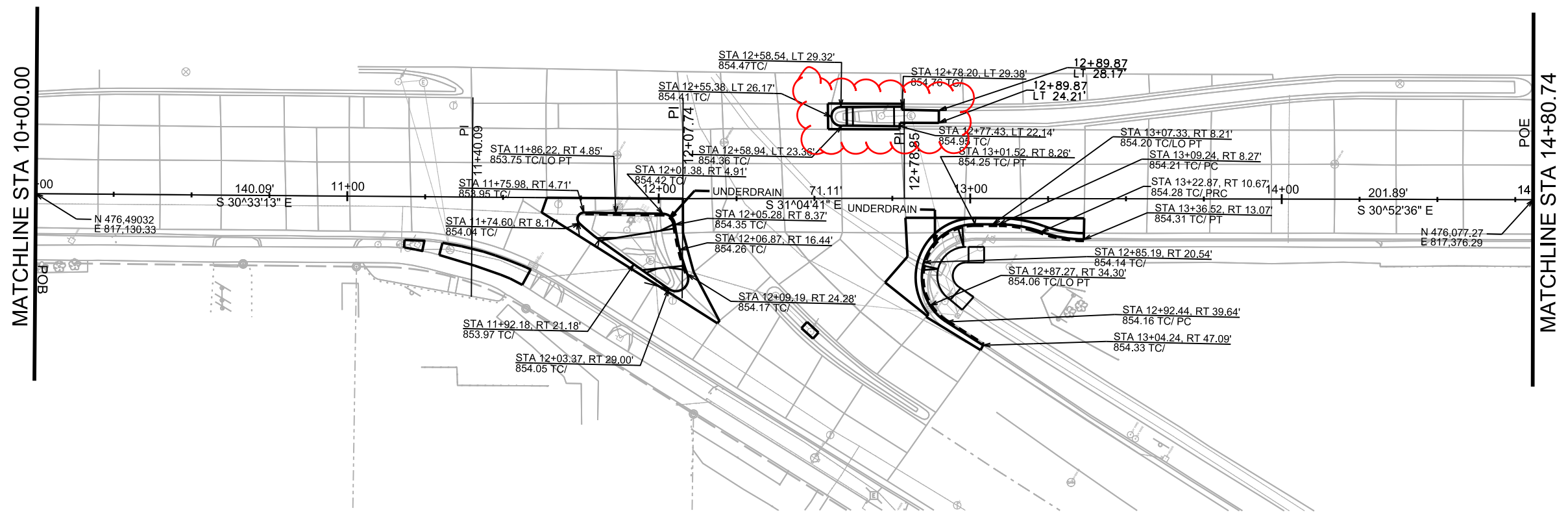
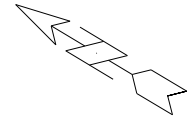
PLOT NAME: \_\_\_\_\_

REV. DATE: \_\_\_\_\_

ORIGINATOR: CITY OF MADISON, STREETS DIVISION

GRADES

**PARK/FISH HATCHERY CITY OF MADISON**  
REV 9/11/12 LKH ADD. CONC. REPL. IN MEDIAN DUE TO ADD. ELECTRICAL WORK



PLOT SCALE: \_\_\_\_\_

PLOT NAME: \_\_\_\_\_

REV. DATE: \_\_\_\_\_

ORIGINATOR: CITY OF MADISON, STREETS DIVISION

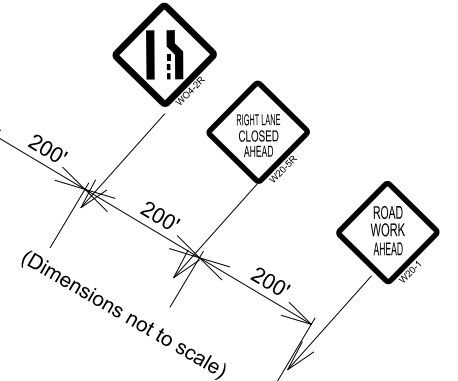
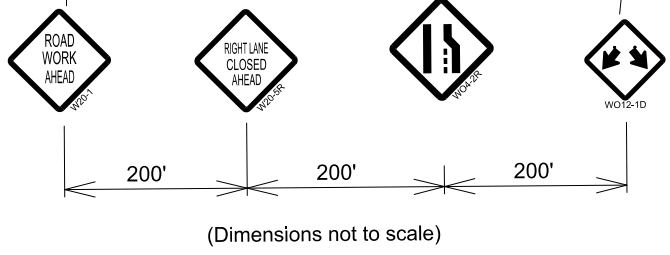
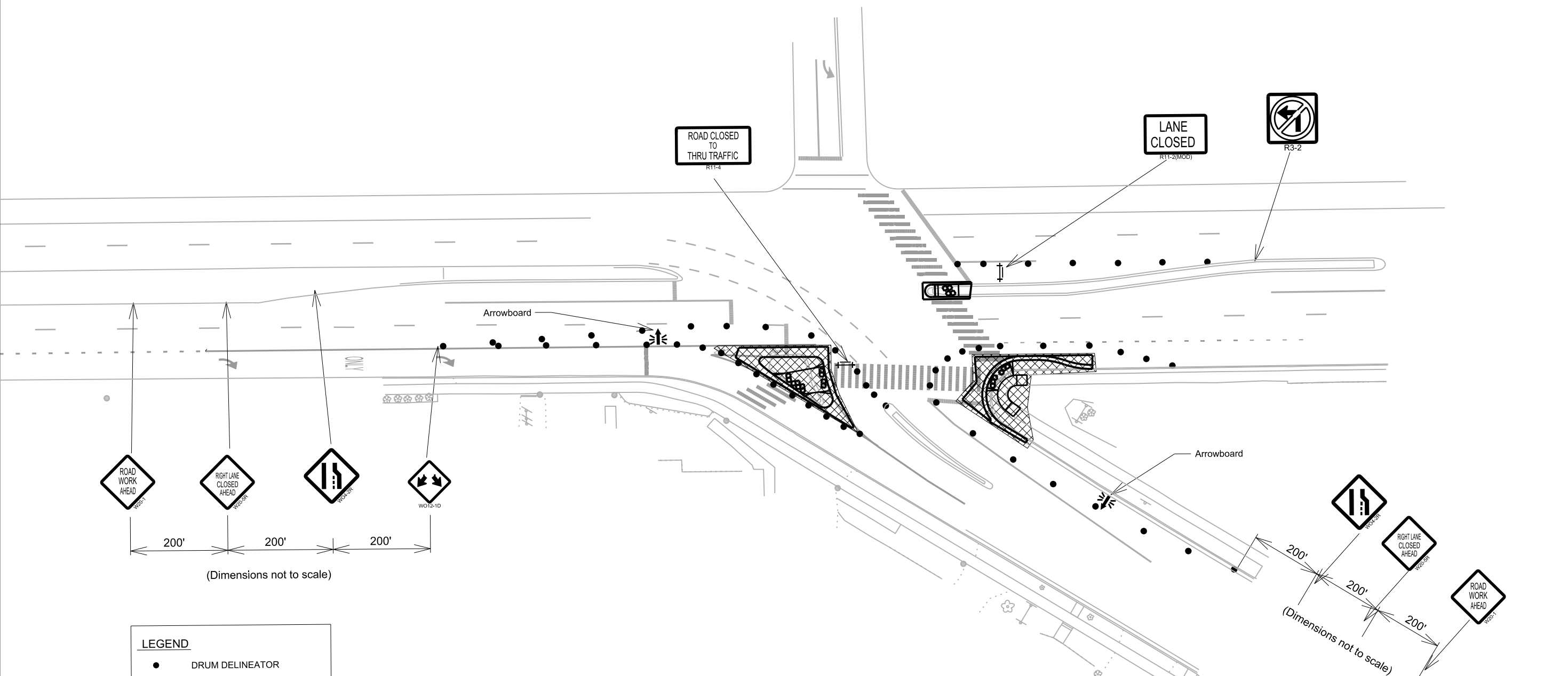


PLOT SCALE:

PLOT NAME:

REV. DATE:

ORIGINATOR: CITY OF MADISON, TRAFFIC ENG. DIV.



**LEGEND**

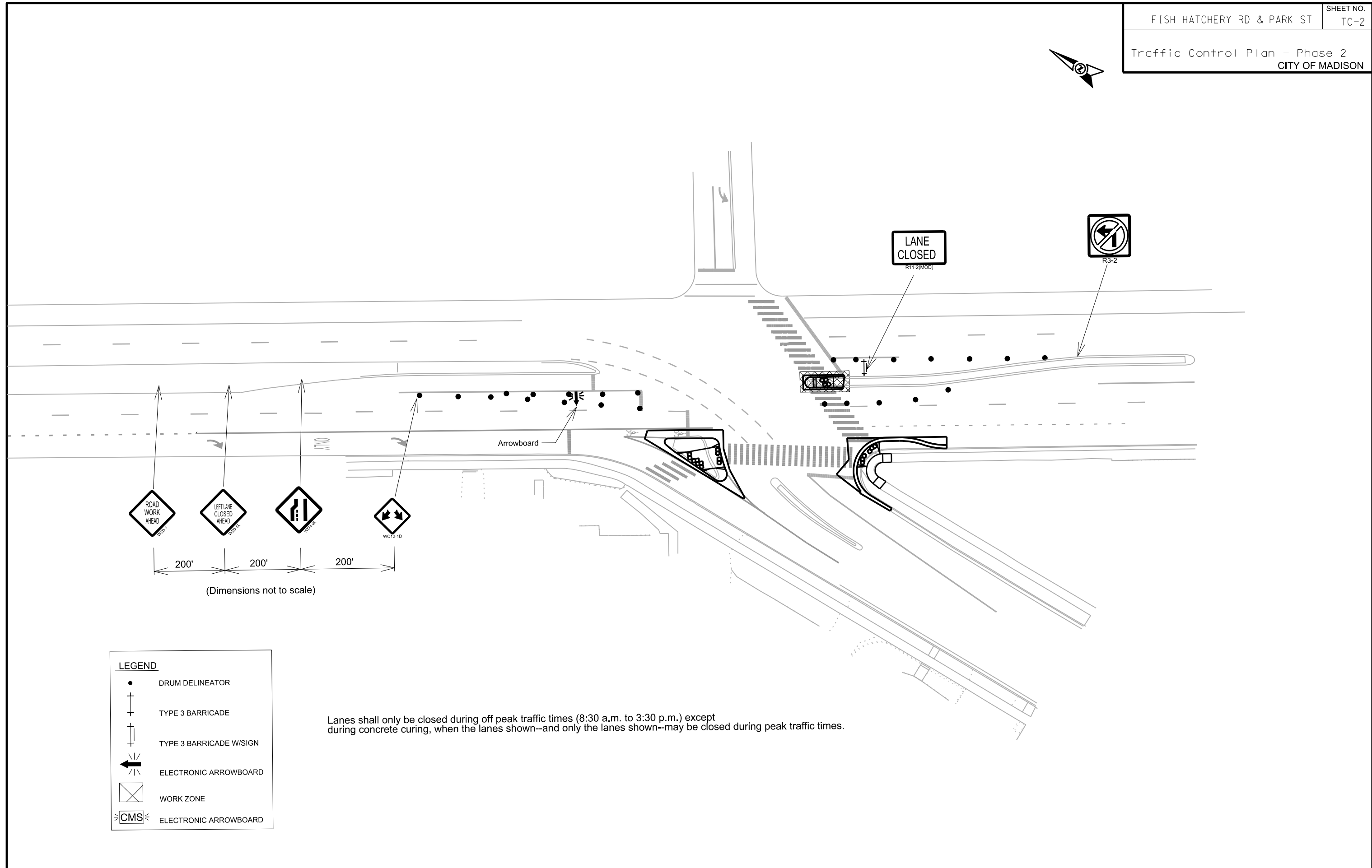
●	DRUM DELINEATOR
⊥	TYPE 3 BARRICADE
⊥	TYPE 3 BARRICADE W/SIGN
←	ELECTRONIC ARROWBOARD
⊠	WORK ZONE
⊠	ELECTRONIC ARROWBOARD

Lanes shall only be closed during off peak traffic times (8:30 a.m. to 3:30 p.m.) except during concrete curing, when the lanes shown--and only the lanes shown--may be closed during peak traffic times.





PLOT SCALE:  
PLOT NAME:  
REV. DATE:  
ORIGINATOR: CITY OF MADISON, TRAFFIC ENG. DIV.



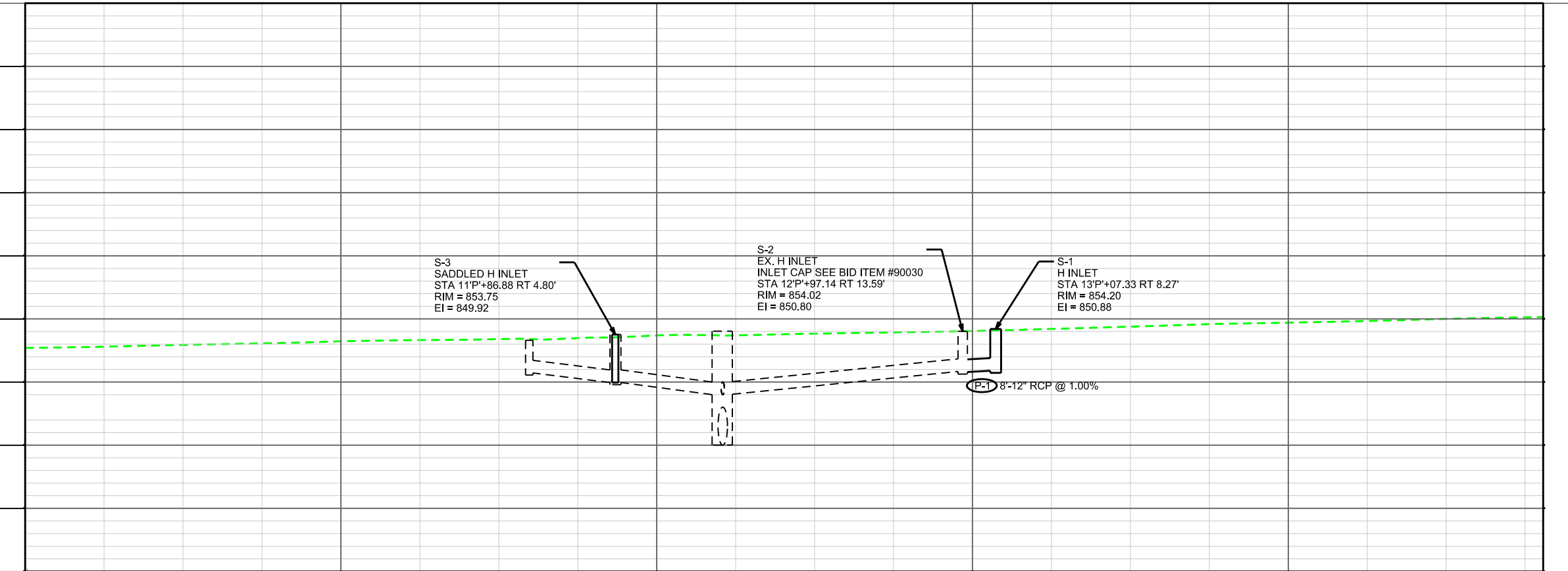
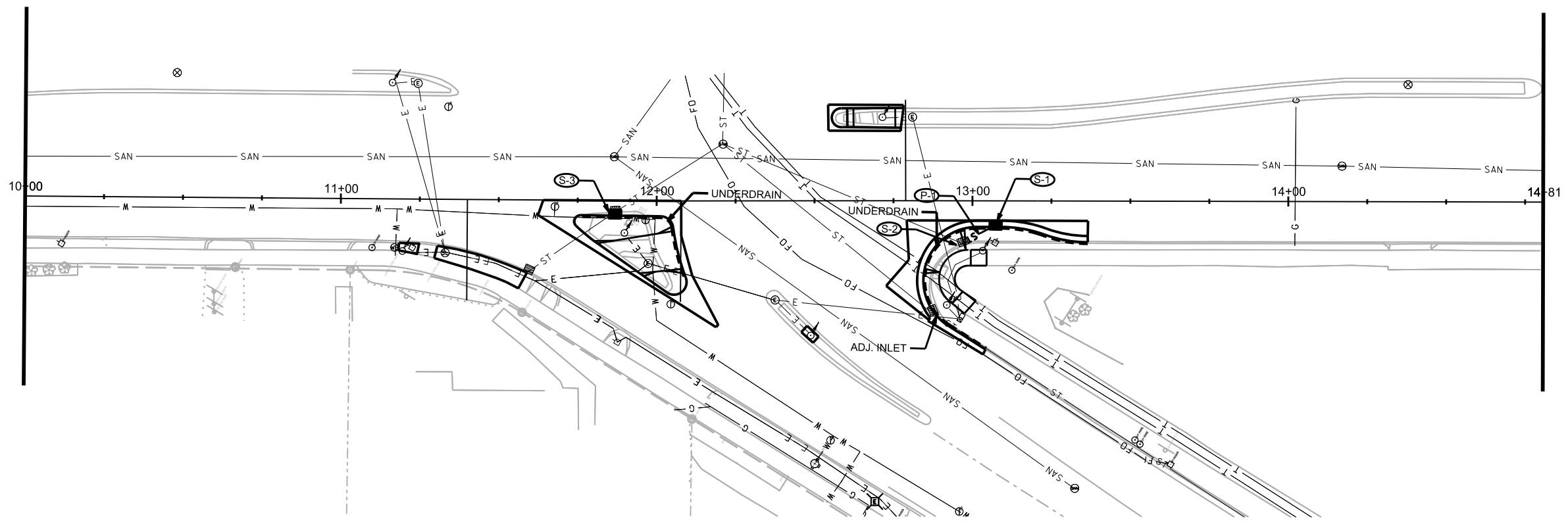
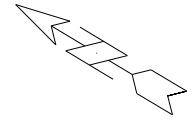
**LEGEND**

- DRUM DELINEATOR
- ⊥ TYPE 3 BARRICADE
- ⊥ TYPE 3 BARRICADE W/SIGN
- ← ELECTRONIC ARROWBOARD
- ⊠ WORK ZONE
- ⊠ CMS ELECTRONIC ARROWBOARD

Lanes shall only be closed during off peak traffic times (8:30 a.m. to 3:30 p.m.) except during concrete curing, when the lanes shown--and only the lanes shown--may be closed during peak traffic times.

PLAN AND PROFILE

S PARK ST CITY OF MADISON



S-3  
SADDLED H INLET  
STA 11'P'+86.88 RT 4.80'  
RIM = 853.75  
EI = 849.92

S-2  
EX. H INLET  
INLET CAP SEE BID ITEM #90030  
STA 12'P'+97.14 RT 13.59'  
RIM = 854.02  
EI = 850.80

S-1  
H INLET  
STA 13'P'+07.33 RT 8.27'  
RIM = 854.20  
EI = 850.88

P-1 8'-12" RCP @ 1.00%

PLOT SCALE: \_\_\_\_\_

PLOT NAME: \_\_\_\_\_

REV. DATE: \_\_\_\_\_

ORIGINATOR: CITY OF MADISON, STREETS DIVISION