

CITY OF MADISON 2013 PARKING GARAGE MAINTENANCE MADISON, WISCONSIN CITY OF MADISON CONTRACT NO. 7069 BID DRAWINGS

STATE STREET CAMPUS (LAKE) GARAGE
415 NORTH LAKE STREET

STATE STREET CAPITAL GARAGE
214 NORTH CARROLL STREET

CAPITAL SQUARE NORTH GARAGE
218 EAST MIFFLIN STREET

GOVERNMENT EAST GARAGE
215 SOUTH PINCKNEY STREET



PARTIAL CITY OF MADISON LOCATION MAP






DRAWING INDEX

TITLE SHEET	T1
CAPITAL SQUARE NORTH GARAGE	CN1
STATE STREET CAPITAL GARAGE	SC1
STATE STREET CAMPUS (LAKE) GARAGE	SL1 THRU SL3
GOVERNMENT EAST GARAGE	GE1
DETAILS	D1 THRU D3

INFORMATION PERTAINING TO EXISTING CONDITIONS GIVEN ON THESE DRAWINGS REPRESENTS TO THE BEST OF OUR KNOWLEDGE THE ACTUAL EXISTING FIELD CONDITIONS. PIERCE ENGINEERS, INC. MAKES NO WARRANTY AS TO THEIR ACCURACY. CONTRACTOR TO FIELD VERIFY EXISTING CONDITIONS IMPERATIVE TO THE NEW WORK. REPORT DISCREPANCIES BETWEEN DRAWINGS AND FIELD CONDITIONS TO THE ENGINEER FOR REVIEW. ANY WORK PERFORMED PRIOR TO RESOLUTION OF DISCREPANCIES BY THE ENGINEER IS SUBJECT TO REMOVAL AND REPLACEMENT AT NO ADDITIONAL COST TO THE CONTRACT.

CONTRACTORS ARE RESPONSIBLE FOR THE MEANS, METHODS, TECHNIQUES, SEQUENCES, AND PROCEDURES OF CONSTRUCTION INCLUDING, BUT NOT LIMITED TO TEMPORARY SUPPORTS, SHORING, AND FORMING TO SUPPORT IMPOSED LOADS AND OTHER SIMILAR ITEMS.

THE LOCATION OF DETERIORATED CONCRETE AND CRACKS SHOWN ARE FOR REFERENCE PURPOSES ONLY. DETERIORATED CONCRETE AND CRACKS TO BE REPAIRED WILL BE DESIGNATED BY THE ENGINEER AT THE TIME OF CONSTRUCTION.

-  NUMBER IN HEXAGON REPRESENTS BID/WORK ITEM
-  UNSOUND CONCRETE
-  CRACK

JSD Professional Services, Inc.
• Engineers • Surveyors • Planners

"BUILDING RELATIONSHIPS WITH A
COMMITMENT TO CLIENT SATISFACTION
THROUGH TRUST, QUALITY AND EXPERIENCE"

- CIVIL ENGINEERING
- SURVEYING & MAPPING
- CONSTRUCTION SERVICES
- WATER RESOURCES
- PLANNING & DEVELOPMENT
- TRANSPORTATION ENGINEERING
- STRUCTURAL ENGINEERING
- LANDSCAPE ARCHITECTURE

MADISON REGIONAL OFFICE
181 HORIZON DRIVE, SUITE 101
VERONA, WISCONSIN 53593
608.848.5060 PHONE | 608.848.2255 FAX

MADISON | MILWAUKEE
KENOSHA | APPLETON
www.jsdinc.com

PIERCE ENGINEERS, Inc.

10 West Mifflin Street, Suite 205
Madison, WI 53703
608.256.7304
608.256.7306 fax
PE Project 10126

SERVICES PROVIDED TO:

CITY OF
MADISON,
PARKING
UTILITY
215 MARTIN LUTHER KING JR. BLVD
MADISON, WISCONSIN 53701-2986

PROJECT:

CITY OF MADISON
2013 PARKING RAMP
RESTORATION

PROJECT LOCATION:

MADISON, WISCONSIN

JSD PROJECT NO.: 09-3884

SEAL/SIGNATURE:

ALTHOUGH EVERY EFFORT HAS BEEN MADE
IN PREPARING THESE PLANS AND CHECKING
THEM FOR ACCURACY, THE CONTRACTOR
AND SUBCONTRACTORS MUST CHECK ALL
DETAIL AND DIMENSIONS OF THEIR TRADE
AND BE RESPONSIBLE FOR THE SAME.

DESIGN: JSD
DRAWN: PE
APPROVED: JSD

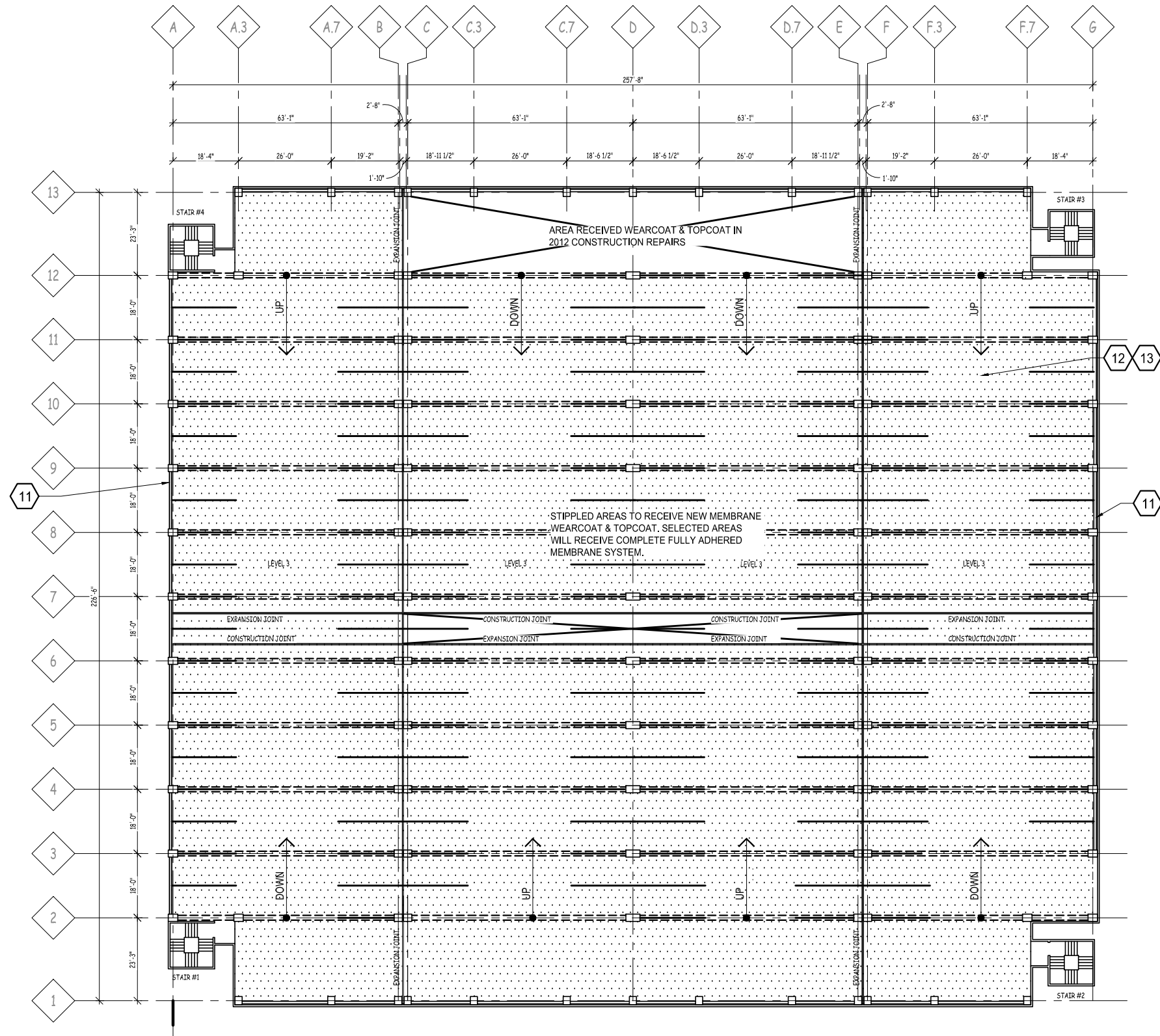
PLAN MODIFICATIONS:	DATE:

SHEET TITLE:

TITLE SHEET

SHEET NUMBER:

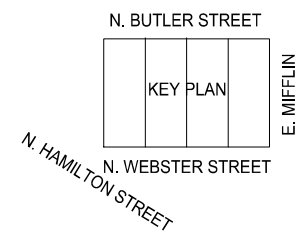
T1



1
CN1

LEVEL 3 FLOOR PLAN

SCALE : NONE



JSD Professional Services, Inc.
• Engineers • Surveyors • Planners

"BUILDING RELATIONSHIPS WITH A
COMMITMENT TO CLIENT SATISFACTION
THROUGH TRUST, QUALITY AND EXPERIENCE"

- CIVIL ENGINEERING
- SURVEYING & MAPPING
- CONSTRUCTION SERVICES
- WATER RESOURCES
- PLANNING & DEVELOPMENT
- TRANSPORTATION ENGINEERING
- STRUCTURAL ENGINEERING
- LANDSCAPE ARCHITECTURE

MADISON REGIONAL OFFICE
161 HORIZON DRIVE, SUITE 101
VERONA, WISCONSIN 53593
608.848.5060 PHONE | 608.848.2255 FAX

MADISON | MILWAUKEE
KENOSHA | APPLETON

www.jsdinc.com

PIERCE
ENGINEERS, Inc.

10 West Mifflin Street, Suite 205
Madison, WI 53703
608.256.7304
608.256.7306 fax
PE Project 10126

SERVICES PROVIDED TO:

CITY OF
MADISON,
PARKING
UTILITY

215 MARTIN LUTHER KING JR. BLVD
MADISON, WISCONSIN 53701-2986

PROJECT:

2013 PARKING RAMP
RESTORATION

PROJECT LOCATION:

CAPITOL SQUARE NORTH

JSD PROJECT NO.: 09-3884

SEAL/SIGNATURE:

ALTHOUGH EVERY EFFORT HAS BEEN MADE
IN PREPARING THESE PLANS AND CHECKING
THEM FOR ACCURACY, THE CONTRACTOR
AND SUBCONTRACTORS MUST CHECK ALL
DETAIL AND DIMENSIONS OF THEIR TRADE
AND BE RESPONSIBLE FOR THE SAME.

DESIGN: JSD
DRAWN: PE
APPROVED: JSD

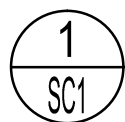
PLAN MODIFICATIONS:	DATE:

SHEET TITLE:

LEVEL 3 FLOOR PLAN

SHEET NUMBER:

CN1

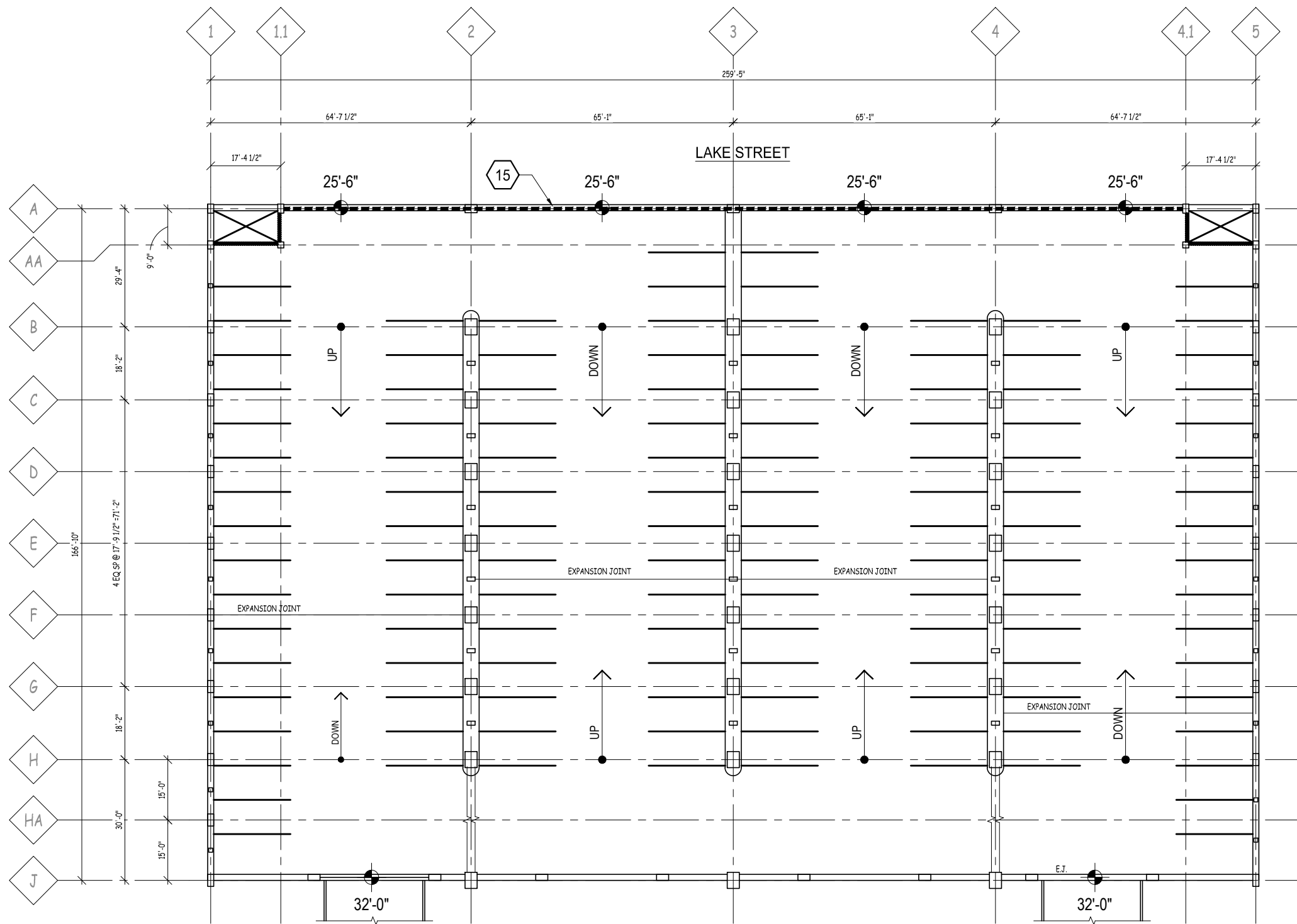


SCALE : NONE



CARROLL STREET

SC1



1
SL1

LEVEL 2 TOPSIDE PLAN

SCALE : NONE



JSD Professional Services, Inc.
• Engineers • Surveyors • Planners

"BUILDING RELATIONSHIPS WITH A
COMMITMENT TO CLIENT SATISFACTION
THROUGH TRUST, QUALITY AND EXPERIENCE"

- CIVIL ENGINEERING
- SURVEYING & MAPPING
- CONSTRUCTION SERVICES
- WATER RESOURCES
- PLANNING & DEVELOPMENT
- TRANSPORTATION ENGINEERING
- STRUCTURAL ENGINEERING
- LANDSCAPE ARCHITECTURE

MADISON REGIONAL OFFICE
161 HORIZON DRIVE, SUITE 101
VERONA, WISCONSIN 53593
608.848.5060 PHONE | 608.848.2255 FAX

MADISON | MILWAUKEE
KENOSHA | APPLETON
www.jsdinc.com

PIERCE
ENGINEERS, Inc.

10 West Mifflin Street, Suite 205
Madison, WI 53703
608.256.7304
608.256.7306 fax
PE Project 10126

SERVICES PROVIDED TO:

**CITY OF
MADISON,
PARKING
UTILITY**
215 MARTIN LUTHER KING JR. BLVD
MADISON, WISCONSIN 53701-2986

PROJECT:
**2013 PARKING RAMP
RESTORATION**

PROJECT LOCATION:
STATE STREET CAMPUS - LAKE

JSD PROJECT NO.: 09-3884

SEAL/SIGNATURE:

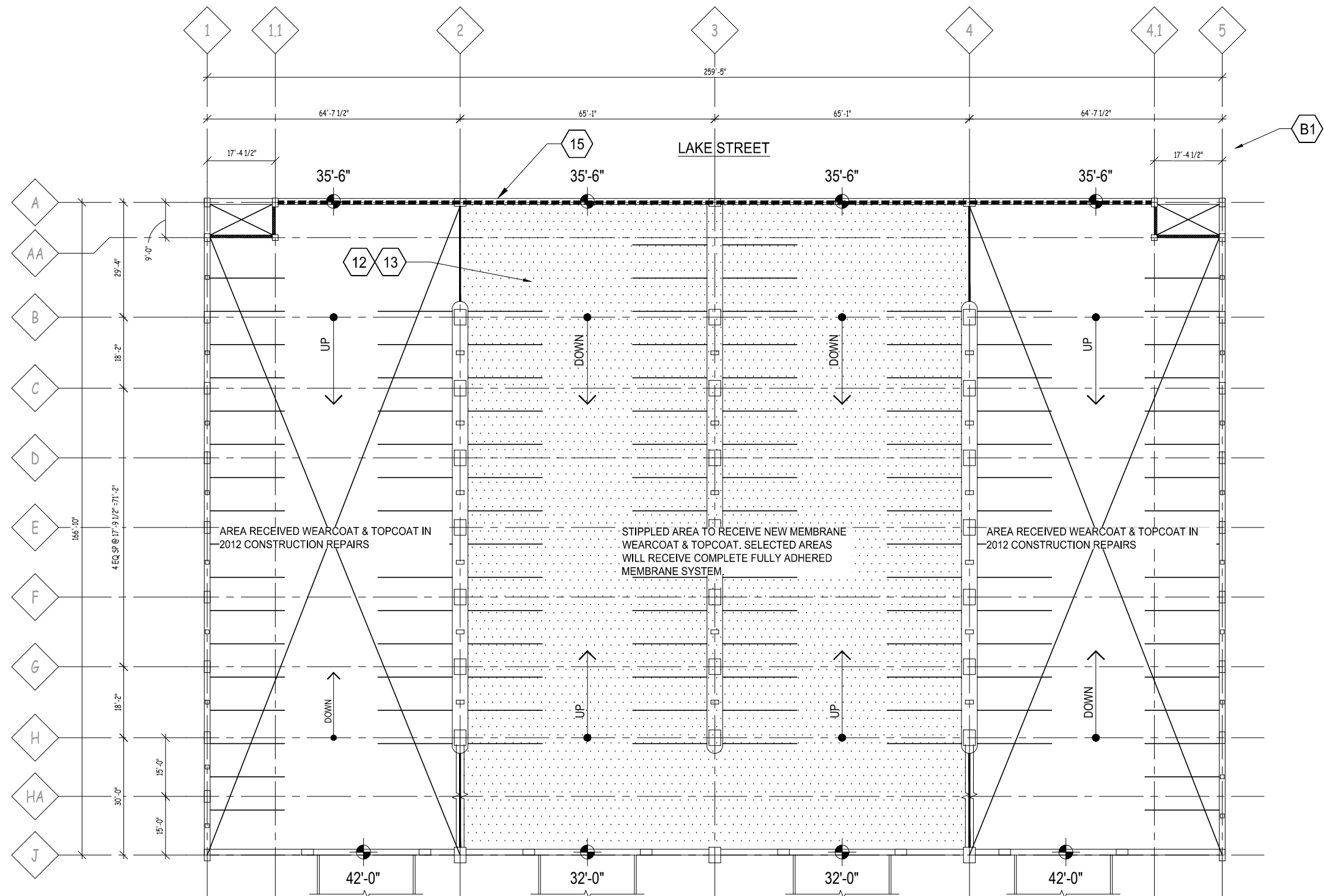
ALTHOUGH EVERY EFFORT HAS BEEN MADE
IN PREPARING THESE PLANS AND CHECKING
THEM FOR ACCURACY, THE CONTRACTOR
AND SUBCONTRACTORS MUST CHECK ALL
DETAIL AND DIMENSIONS OF THEIR TRADE
AND BE RESPONSIBLE FOR THE SAME.

DESIGN: JSD
DRAWN: PE
APPROVED: JSD

PLAN MODIFICATIONS:	DATE:

SHEET TITLE:
LEVEL 2 TOPSIDE PLAN

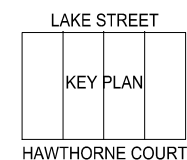
SHEET NUMBER:
SL1



1
SL2

LEVEL 3 TOPSIDE PLAN

SCALE : NONE



JSD Professional Services, Inc.
• Engineers • Surveyors • Planners

"BUILDING RELATIONSHIPS WITH A
COMMITMENT TO CLIENT SATISFACTION
THROUGH TRUST, QUALITY AND EXPERIENCE"

- CIVIL ENGINEERING
- SURVEYING & MAPPING
- CONSTRUCTION SERVICES
- WATER RESOURCES
- PLANNING & DEVELOPMENT
- TRANSPORTATION ENGINEERING
- STRUCTURAL ENGINEERING
- LANDSCAPE ARCHITECTURE

MADISON REGIONAL OFFICE
161 HORIZON DRIVE, SUITE 101
VERONA, WISCONSIN 53593
608.848.5060 PHONE | 608.848.2255 FAX

MADISON | MILWAUKEE
KENOSHA | APPLETON
www.jsdinc.com

PIERCE
ENGINEERS, Inc.

10 West Mifflin Street, Suite 205
Madison, WI 53703
608.256.7304
608.256.7306 fax
PE Project 10126

SERVICES PROVIDED TO:

**CITY OF
MADISON,
PARKING
UTILITY**

215 MARTIN LUTHER KING JR. BLVD
MADISON, WISCONSIN 53701-2986

PROJECT:
**2013 PARKING RAMP
RESTORATION**

PROJECT LOCATION:
STATE STREET CAMPUS - LAKE

JSD PROJECT NO.: 09-3884

SEAL/SIGNATURE:

ALTHOUGH EVERY EFFORT HAS BEEN MADE
IN PREPARING THESE PLANS AND CHECKING
THEM FOR ACCURACY, THE CONTRACTOR
AND SUBCONTRACTORS MUST CHECK ALL
DETAIL AND DIMENSIONS OF THEIR TRADE
AND BE RESPONSIBLE FOR THE SAME.

DESIGN: JSD
DRAWN: PE
APPROVED: JSD

PLAN MODIFICATIONS:	DATE:

SHEET TITLE:
LEVEL 3 TOPSIDE PLAN

SHEET NUMBER:
SL2

- CIVIL ENGINEERING
- SURVEYING & MAPPING
- CONSTRUCTION SERVICES
- WATER RESOURCES
- PLANNING & DEVELOPMENT
- TRANSPORTATION ENGINEERING
- STRUCTURAL ENGINEERING
- LANDSCAPE ARCHITECTURE

MADISON REGIONAL OFFICE
161 HORIZON DRIVE, SUITE 101
VERONA, WISCONSIN 53593
608.848.5060 PHONE | 608.848.2255 FAX

**MADISON | MILWAUKEE
KENOSHA | APPLETON**

www.jsdinc.com



SERVICES PROVIDED TO:

CITY OF
MADISON,
PARKING
UTILITY
215 MARTIN LUTHER KING JR. BLVD
MADISON, WISCONSIN 53701-2986

PROJECT:
2013 PARKING RAMP
RESTORATION

PROJECT LOCATION:
STATE STREET CAMPUS - LAKE

JSD PROJECT NO.: 09-3884

SEAL/SIGNATURE:

ALTHOUGH EVERY EFFORT HAS BEEN MADE IN PREPARING THESE PLANS AND CHECKING THEM FOR ACCURACY, THE CONTRACTOR AND SUBCONTRACTORS MUST CHECK ALL DETAIL AND DIMENSIONS OF THEIR TRADE AND BE RESPONSIBLE FOR THE SAME.

DESIGN:	JSD	
DRAWN:	PE	
APPROVED:	JSD	

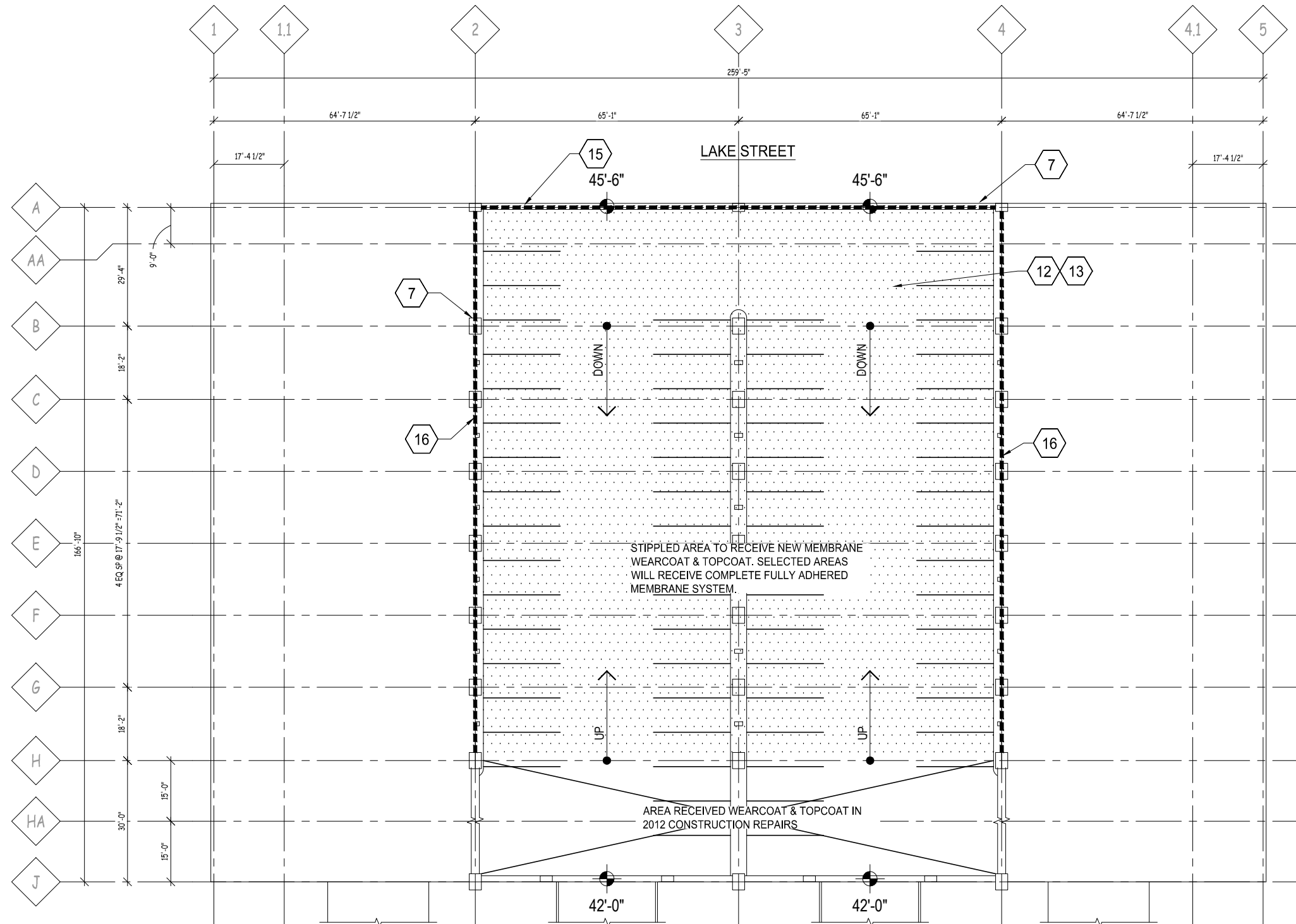
[illegible]

SHEET TITLE:

LEVEL 4 TOPSIDE PLAN

SHEET NUMBER:

SL3



LEVEL 4 TOPSIDE PLAN

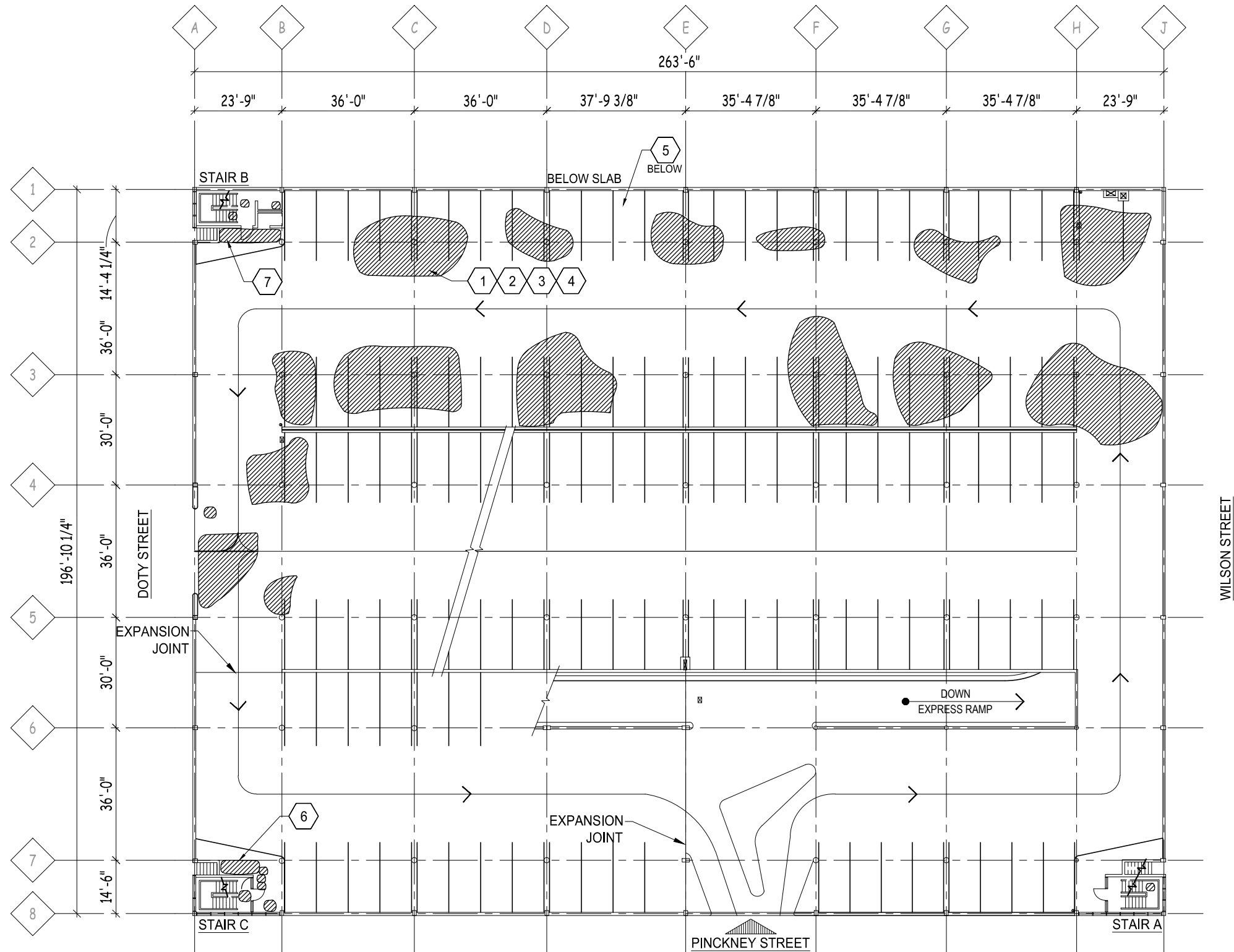
SCALE : NONE



LAKE STREET

KEY PLAN

HAWTHORNE COURT



1
GE1

FIRST LEVEL TOPSIDE PLAN

SCALE : NONE



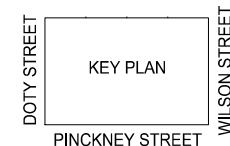
PLAN NORTH



TRUE NORTH

LEGEND

- CONCRETE DELAMINATION
- CRACK



- CIVIL ENGINEERING
- SURVEYING & MAPPING
- CONSTRUCTION SERVICES
- WATER RESOURCES
- PLANNING & DEVELOPMENT
- TRANSPORTATION ENGINEERING
- STRUCTURAL ENGINEERING
- LANDSCAPE ARCHITECTURE

MADISON REGIONAL OFFICE
161 HORIZON DRIVE, SUITE 101
VERONA, WISCONSIN 53593
608.848.5060 PHONE | 608.848.2255 FAX

MADISON | MILWAUKEE
KENOSHA | APPLETON
www.jsdinc.com

PIERCE ENGINEERS, Inc.
10 West Mifflin Street, Suite 205
Madison, WI 53703
608.256.7304
608.256.7306 fax
PE Project 10126

SERVICES PROVIDED TO:
CITY OF MADISON, PARKING UTILITY
215 MARTIN LUTHER KING JR. BLVD
MADISON, WISCONSIN 53701-2986

PROJECT:
2013 PARKING RAMP RESTORATION

PROJECT LOCATION:
GOVERNMENT EAST

JSD PROJECT NO.: 09-3884

SEAL/SIGNATURE:

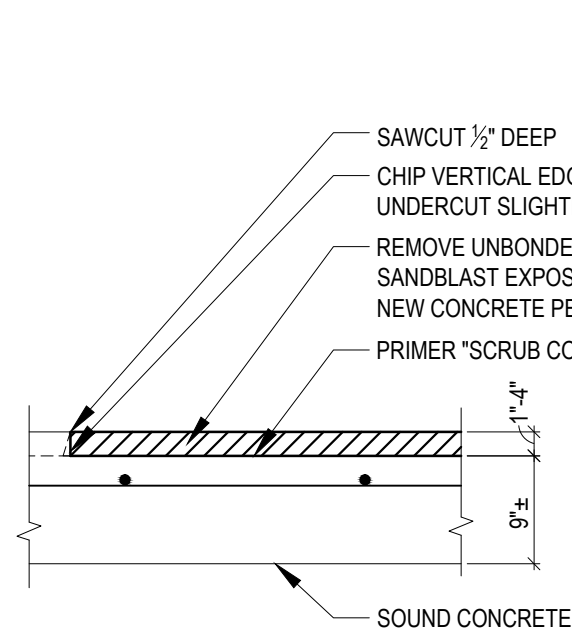
ALTHOUGH EVERY EFFORT HAS BEEN MADE IN PREPARING THESE PLANS AND CHECKING THEM FOR ACCURACY, THE CONTRACTOR AND SUBCONTRACTORS MUST CHECK ALL DETAIL AND DIMENSIONS OF THEIR TRADE AND BE RESPONSIBLE FOR THE SAME.

DESIGN: JSD
DRAWN: PE
APPROVED: JSD

PLAN MODIFICATIONS:	DATE:

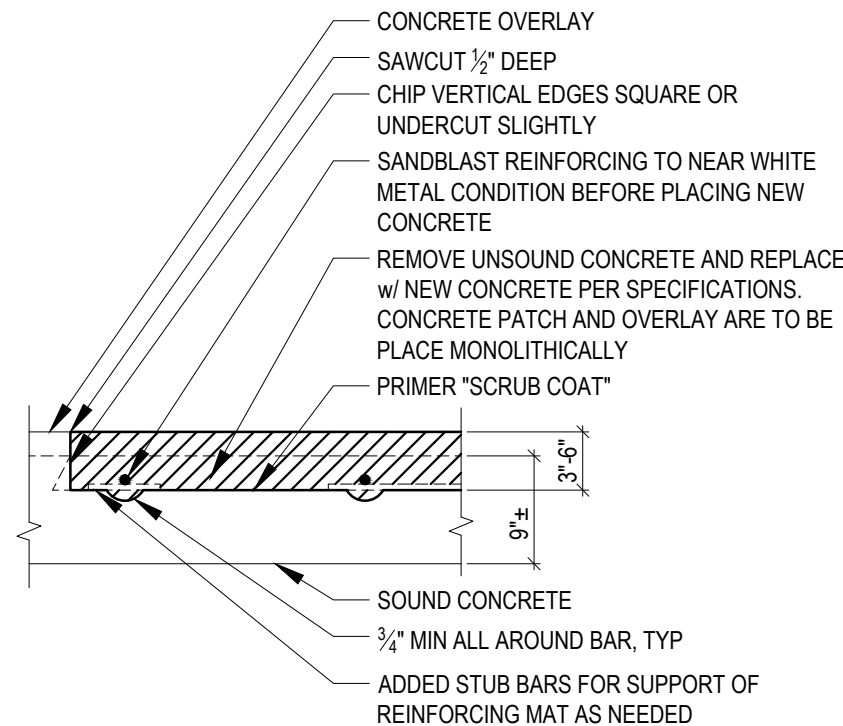
SHEET TITLE:
FIRST LEVEL TOPSIDE PLAN

SHEET NUMBER:
GE1



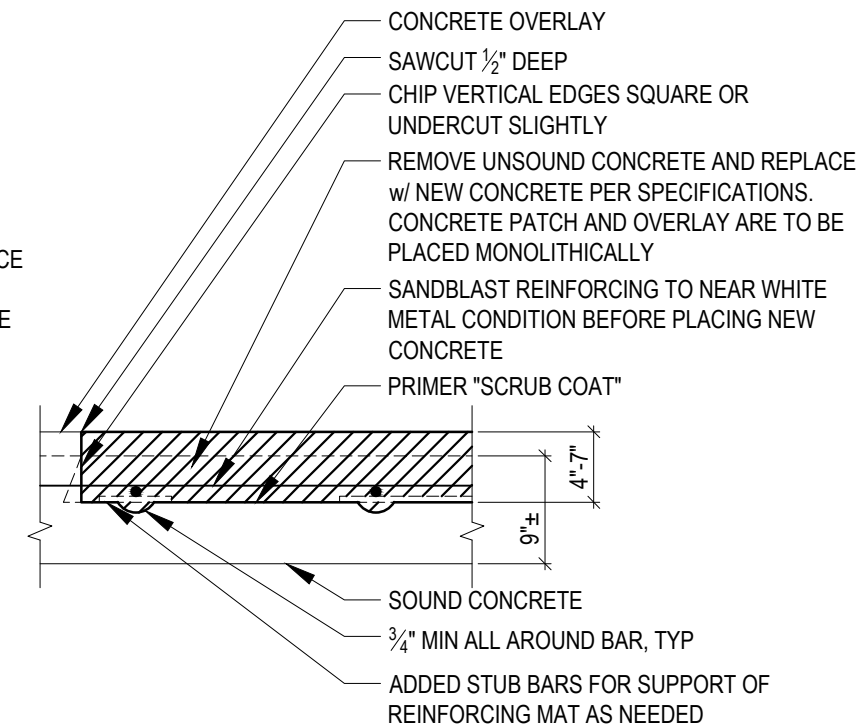
NOTE: REMOVAL OF CONCRETE TO TOP OF UNDERLYING REINFORCING IS AT NO ADDITIONAL CHARGE

1
D1 **TOPSIDE SLAB RESTORATION**
SCALE : NTS (UNBONDED OVERLAY)



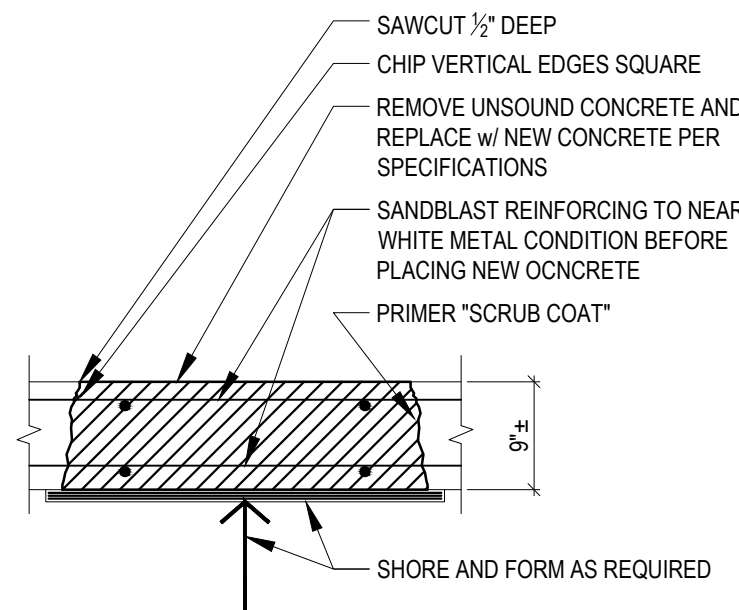
NOTE: REMOVAL OF CONCRETE BELOW SUPPORT BARS IS REQUIRED BY SPECIFICATION. NO ADDITIONAL PAYMENT FOR DEEPER REMOVAL IN THESE AREAS

2
D1 **TOPSIDE SLAB RESTORATION**
SCALE : NTS (1 LAYER REINFORCING)



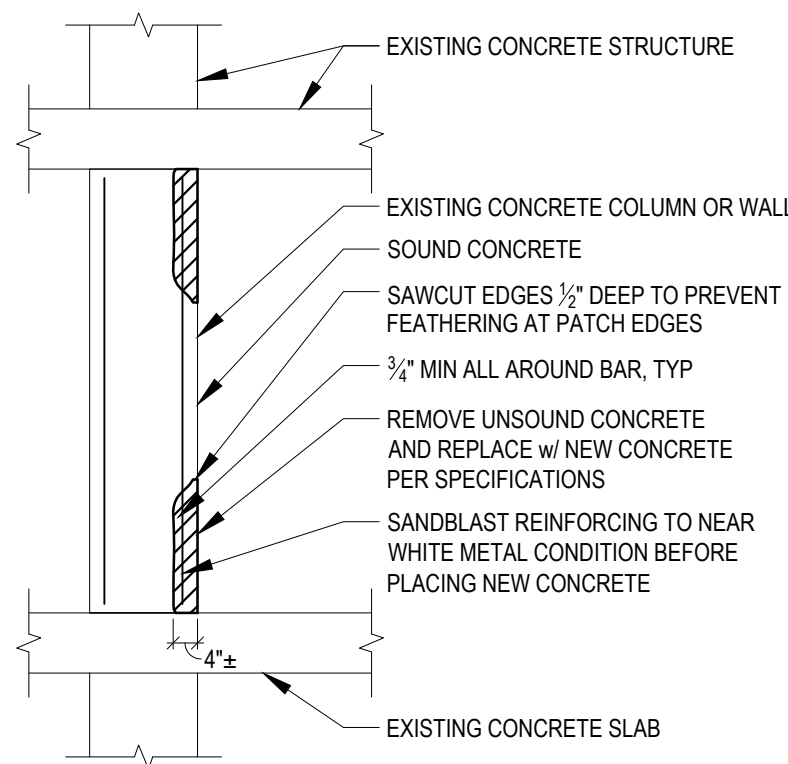
NOTE: REMOVAL OF CONCRETE BELOW SUPPORT BARS IS REQUIRED BY SPECIFICATION. NO ADDITIONAL PAYMENT FOR DEEPER REMOVAL IN THESE AREAS

3
D1 **TOPSIDE SLAB RESTORATION**
SCALE : NTS (2 LAYERS REINFORCING)

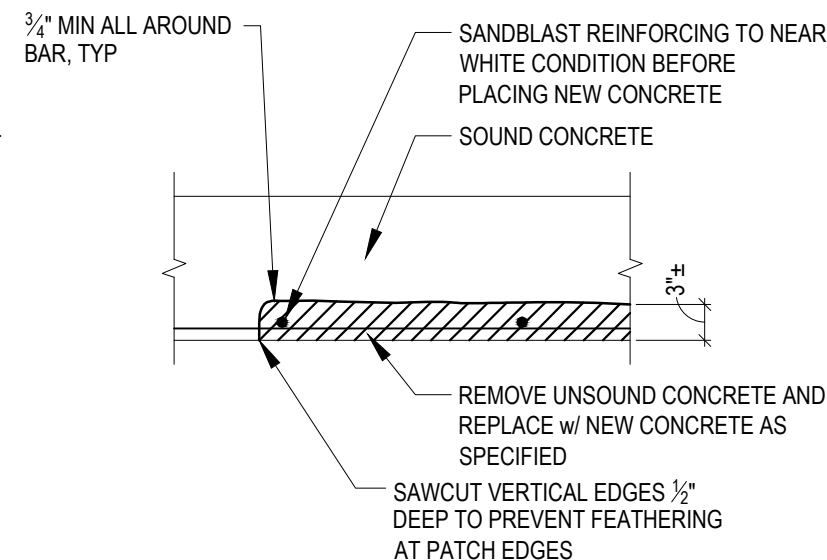


NOTE: REINFORCING SHOWN FOR REFERENCE ONLY. LOCATION AND SPACING TO BE FIELD VERIFIED

4
D1 **FULL DEPTH SLAB REPLACEMENT**
SCALE : NTS

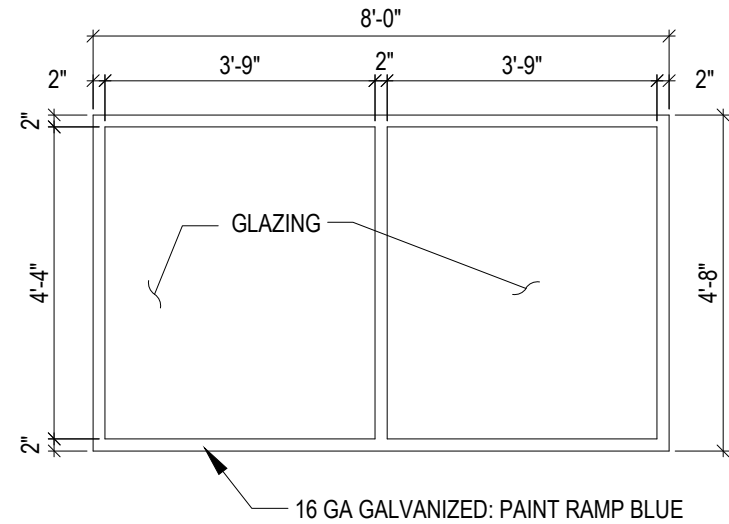


5
D1 **REPAIR AT VERTICAL SURFACES**
SCALE : NTS



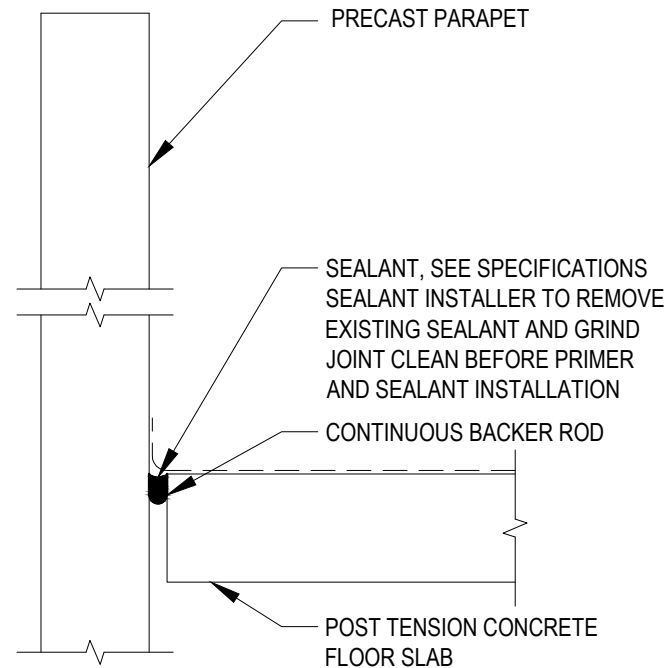
NOTE: SLABS AT CAPITOL SQUARE NORTH ARE POST TENSIONED. REFER TO 6/D2 FOR PRECAUTIONARY MEASURES

6
D1 **UNDERSIDE SLAB RESTORATION**
SCALE : NTS

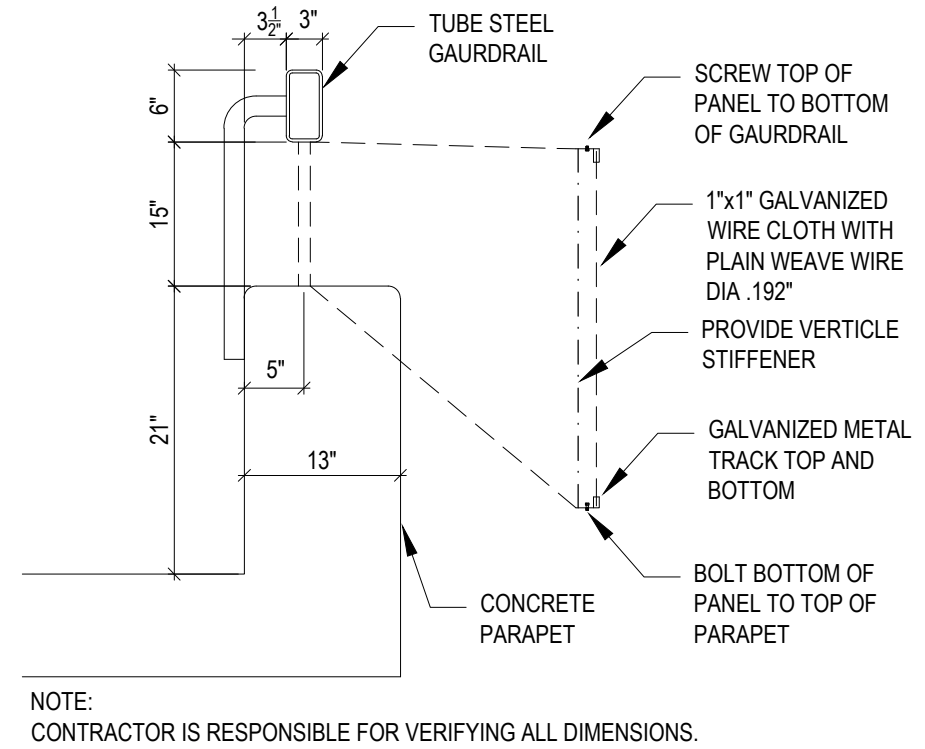


NOTE:
CONTRACTOR IS RESPONSIBLE FOR VERIFYING ALL EXISTING DIMENSIONS.

1 WINDOW FRAME REPLACEMENT
D2 SCALE : NTS (SSCo)

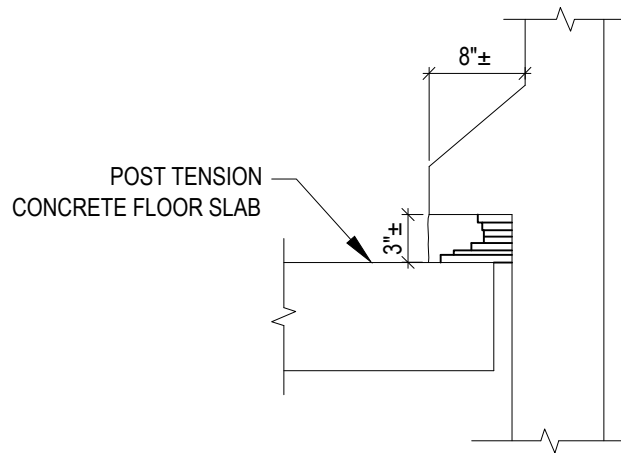


2 JOINT DETAIL @ PARAPET
D2 SCALE : NTS (CSN)



NOTE:
CONTRACTOR IS RESPONSIBLE FOR VERIFYING ALL DIMENSIONS.

3 PROTECTIVE RAIL BETWEEN PARAPET & GAURDRAIL
D2 SCALE : NTS (SSCL)



4 REPLACE GROUT BELOW HAUNCHES
D2 SCALE : NTS (SSCo)



5 PHOTO OF HAUNCH PLATE STACK
D2 SCALE : NTS



REMOVE LOOSE CRACKED AND
DISPLAYED GROUT. REPLACE
WITH NEW DRY PACK GROUT

6 PHOTO OF CRACKED HAUNCH GROUT
D2 SCALE : NTS

- CIVIL ENGINEERING
- SURVEYING & MAPPING
- CONSTRUCTION SERVICES
- WATER RESOURCES
- PLANNING & DEVELOPMENT
- TRANSPORTATION ENGINEERING
- STRUCTURAL ENGINEERING
- LANDSCAPE ARCHITECTURE

MADISON REGIONAL OFFICE
161 HORIZON DRIVE, SUITE 101
VERONA, WISCONSIN 53593
608.848.5060 PHONE | 608.848.2255 FAX

MADISON | MILWAUKEE
KENOSHA | APPLETON
www.jsdinc.com

10 West Mifflin Street, Suite 205
Madison, WI 53703
608.256.7304
608.256.7306 fax
PE Project 10126

SERVICES PROVIDED TO:
**CITY OF
MADISON,
PARKING
UTILITY**
215 MARTIN LUTHER KING JR. BLVD
MADISON, WISCONSIN 53701-2986

PROJECT:
**2013 PARKING RAMP
RESTORATION**

PROJECT LOCATION:

JSD PROJECT NO.: 09-3884

SEAL/SIGNATURE:

ALTHOUGH EVERY EFFORT HAS BEEN MADE
IN PREPARING THESE PLANS AND CHECKING
THEM FOR ACCURACY, THE CONTRACTOR
AND SUBCONTRACTORS MUST CHECK ALL
DETAIL AND DIMENSIONS OF THEIR TRADE
AND BE RESPONSIBLE FOR THE SAME.

DESIGN: JSD
DRAWN: PE
APPROVED: JSD

PLAN MODIFICATIONS:	DATE:

SHEET TITLE:
DETAILS

SHEET NUMBER:
D2

