

SHEET SCHEDULE

- 1.1

WASHINGTON MANOR PARK - PROJECT LOCATION AND SITE ACCESS
- 1.2

WASHINGTON MANOR PARK - DEMOLITION AND PROTECTION PLAN
- 1.3

WASHINGTON MANOR PARK - LAYOUT PLAN
- 1.4

WASHINGTON MANOR PARK - GRADING AND EROSION CONTROL
- 1.5

WASHINGTON MANOR PARK - QUANTITY CALCULATIONS
- 1.6

WASHINGTON MANOR PARK - SITE DETAILS
- 2.1

WESTMORLAND PARK - PROJECT LOCATION AND SITE ACCESS
- 2.2

WESTMORLAND PARK - DEMOLITION AND PROTECTION PLAN
- 2.3

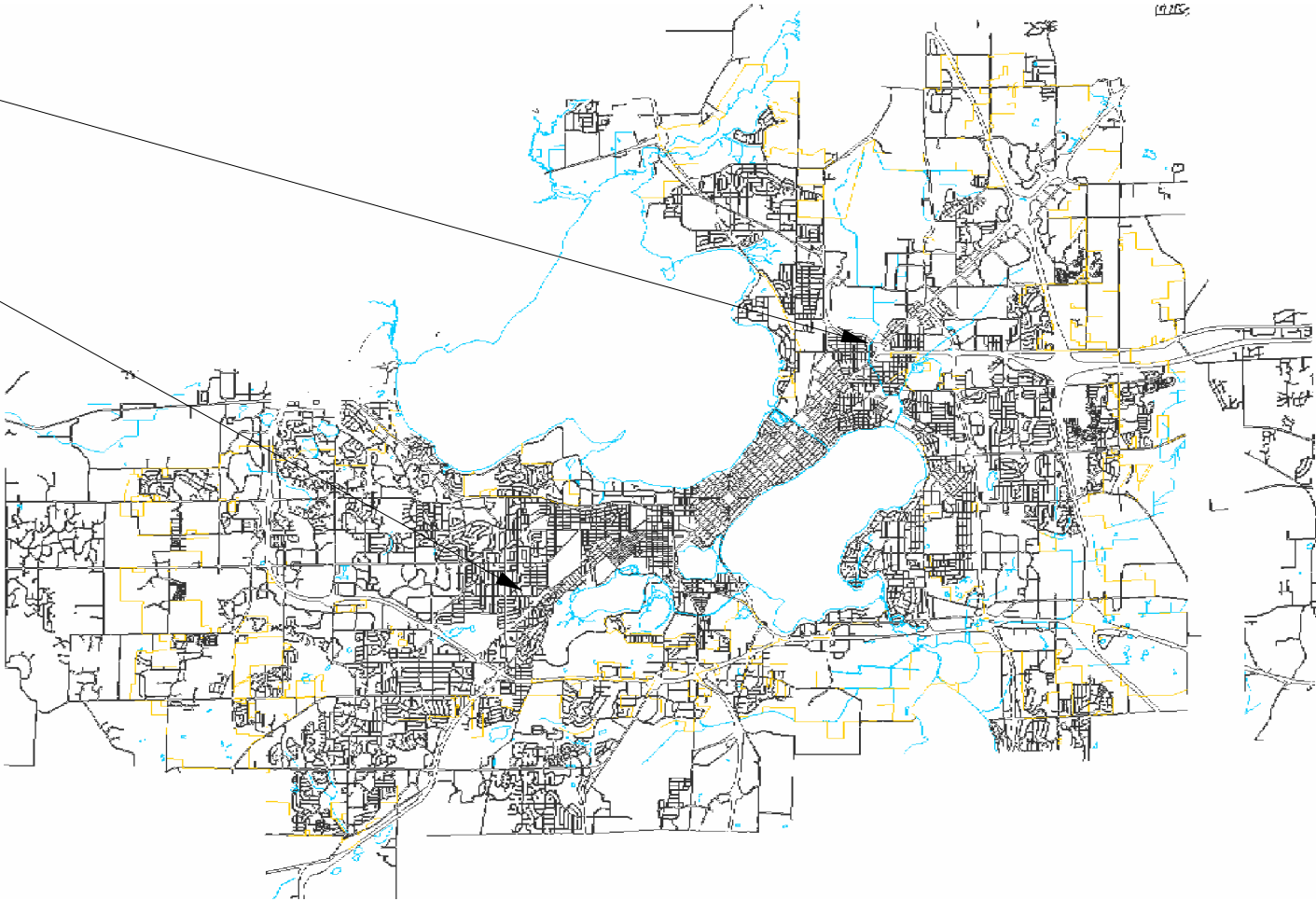
WESTMORLAND PARK - LAYOUT PLAN
- 2.4

WESTMORLAND PARK - GRADING AND EROSION CONTROL

PARK PAVING 2013
CONTRACT 7100

WASHINGTON MANOR PARK
801 NORTH OAK STREET
MADISON, WI

WESTMORLAND PARK
4114 TOKAY BLVD
MADISON, WI



City of Madison
Department of Public Works
PARKS DIVISION

City-County Building, Suite 104
210 Martin Luther King, Jr. Blvd.
PO Box 2987
Madison, WI 53701-2987

play
**MADISON
PARKS**



PROJECT:

PARK PAVING 2013

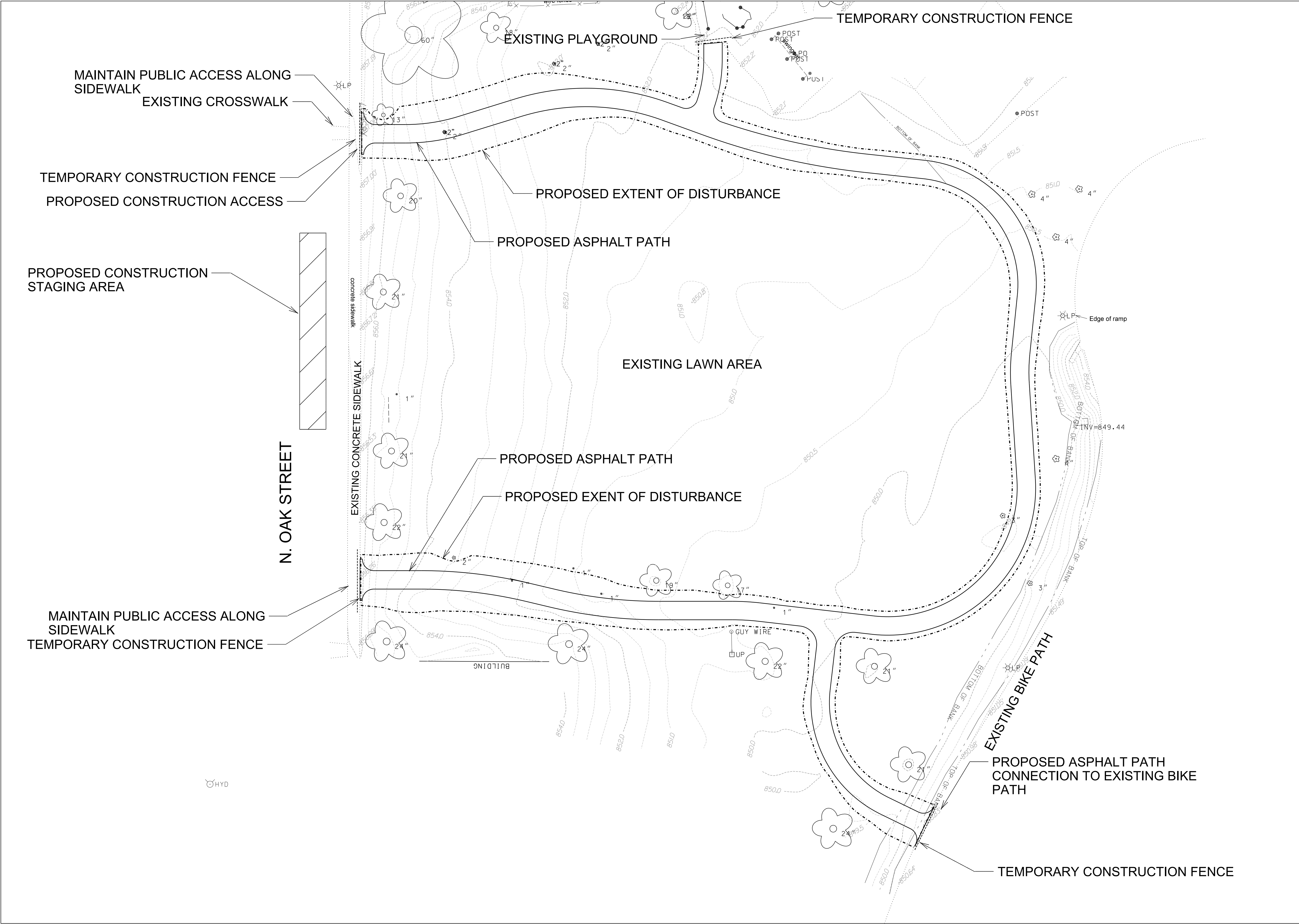
Although every effort has been made in preparing these plans and checking them for accuracy, the contractor and subcontractors must check all details and dimensions of their trade and be responsible for the same.

ITEM	DATE
Drawn by: MS	07-26-13

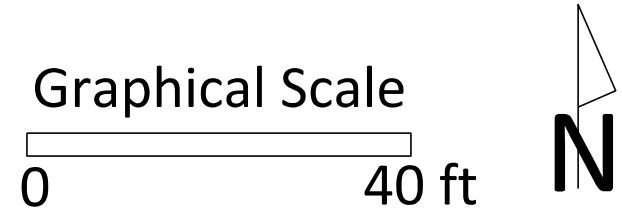
PUBLIC WORKS PROJECT #:
7100

SHEET TITLE:

SHEET NUMBER:



City of Madison
Department of Public Works
PARKS DIVISION
City-County Building, Suite 104
210 Martin Luther King, Jr. Blvd.
PO Box 2987
Madison, WI 53701-2987
play
**MADISON
PARKS**



PROJECT:

PARK PAVING 2013

*WASHINGTON MANOR
PARK
801 NORTH OAK STREET
MADISON, WI*

Although every effort has been made in preparing these plans and checking them for accuracy, the contractor and subcontractors must check all details and dimensions of their trade and be responsible for the same.

ITEM	DATE
Drawn by: MRS	07-26-13

PUBLIC WORKS PROJECT #:
7100

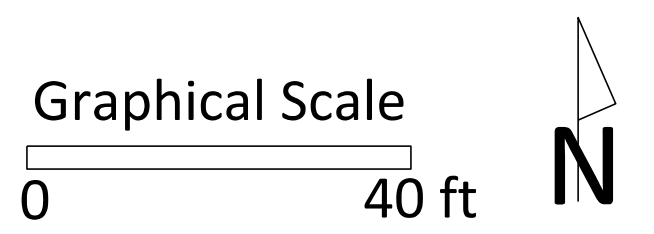
SHEET TITLE:
*PROJECT LOCATION
AND
SITE ACCESS PLAN*

SHEET NUMBER:
1.1

City of Madison
Department of Public Works
PARKS DIVISION

City-County Building, Suite 104
210 Martin Luther King, Jr. Blvd.
PO Box 2987
Madison, WI 53701-2987

play
**MADISON
PARKS**



PROJECT:

PARK PAVING 2013

*WASHINGTON MANOR
PARK
801 NORTH OAK STREET
MADISON, WI*

Although every effort has been made in preparing these plans and checking them for accuracy, the contractor and subcontractors must check all details and dimensions of their trade and be responsible for the same.

ITEM	DATE
Drawn by: MRS	07-26-13

PUBLIC WORKS PROJECT #:

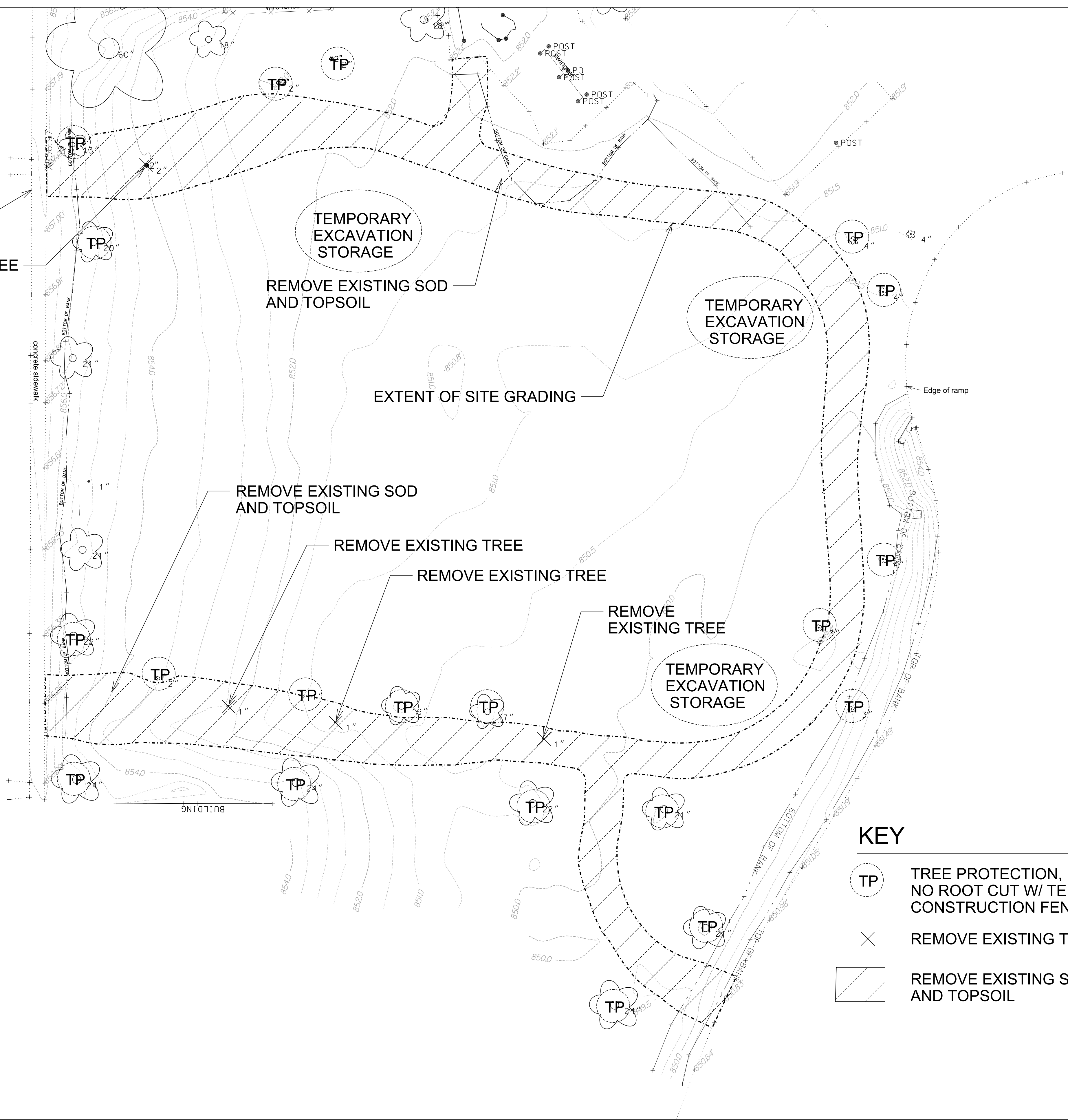
7100

SHEET TITLE:

*DEMOLITION AND
PROTECTION
PLAN*

SHEET NUMBER:

1.2



PROTECT EXISTING SIDEWALK AND CURB RAMP

REMOVE EXISTING TREE

TEMPORARY EXCAVATION STORAGE

REMOVE EXISTING SOD AND TOPSOIL

EXTENT OF SITE GRADING

REMOVE EXISTING SOD AND TOPSOIL

REMOVE EXISTING TREE

REMOVE EXISTING TREE

REMOVE EXISTING TREE

TEMPORARY EXCAVATION STORAGE

KEY

- TP TREE PROTECTION, NO ROOT CUT W/ TEMP CONSTRUCTION FENCE
- × REMOVE EXISTING TREE
- REMOVE EXISTING SOD AND TOPSOIL

same adjustment
light
model was modified
t. shift -0.087 ft.

ating.
essarily shown.

isclose.

ALIGN WITH EXISTING
CROSSWALK CURB CUT

CP#CP07
HYD TOP NUT
N=495387.6600
E=832165.1400
ELEV=859.9000

CP#CP05
MAGNAIL ASPH
N=495291.8400
E=832216.0300
ELEV=855.9900

CP#CP08
HYD TOP NUT
N=495099.7500
E=832166.2200
ELEV=858.1900

PATH CENTERLINE,
8 FT. WIDTH TYP.
ASPHALT PATH AT
PLAYGROUND SURFACE,
PER SHEET 1.6, DETAIL 2

CP#CP06
MAGNAIL ASPH STRIPE INT
N=495404.2900
E=832469.9400
ELEV=852.5800

CP#CP09
MAGNAIL PATH
N=495208.6600
E=832546.8600
ELEV=852.1900

City of Madison
Department of Public Works
PARKS DIVISION

City-County Building, Suite 104
210 Martin Luther King, Jr. Blvd.
PO Box 2987
Madison, WI 53701-2987

play
**MADISON
PARKS**

Graphical Scale

0 40 ft



PROJECT:

PARK PAVING 2013

*WASHINGTON MANOR
PARK
801 NORTH OAK STREET
MADISON, WI*

Although every effort has been made in preparing these
plans and checking them for accuracy, the contractor and
subcontractors must check all details and dimensions of
their trade and be responsible for the same.

ITEM	DATE
Drawn by: MRS	07-26-13

PUBLIC WORKS PROJECT #:
7100

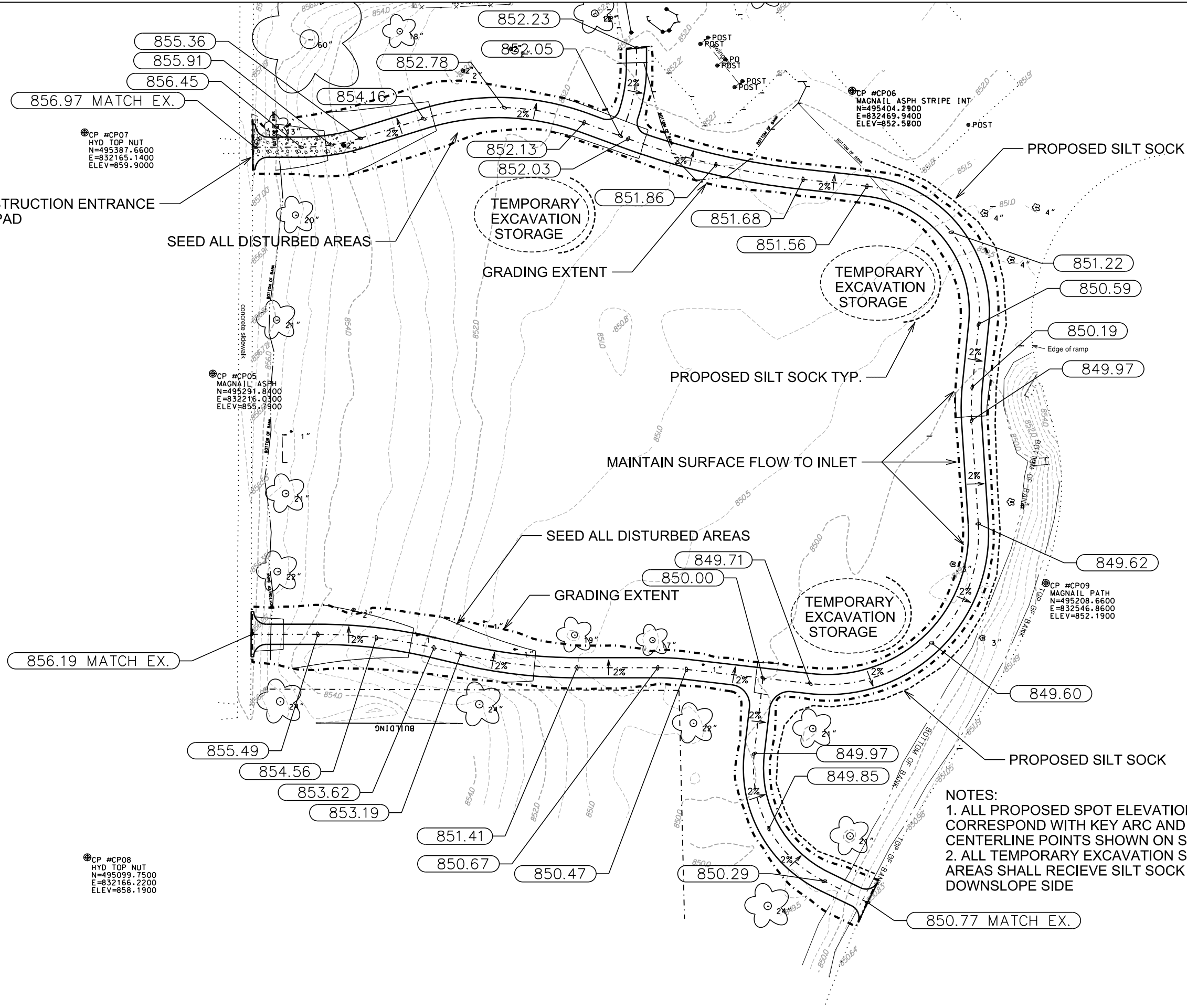
SHEET TITLE:
LAYOUT PLAN

SHEET NUMBER:
1.3

same adjustment
light
model was modified
t. shift -0.087 ft.

ating.
essarily shown.

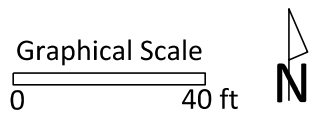
disclose.



City of Madison
Department of Public Works
PARKS DIVISION

City-County Building, Suite 104
210 Martin Luther King, Jr. Blvd.
PO Box 2987
Madison, WI 53701-2987

play
**MADISON
PARKS**



PROJECT:

PARK PAVING 2013

*WASHINGTON MANOR
PARK
801 NORTH OAK STREET
MADISON, WI*

Although every effort has been made in preparing these plans and checking them for accuracy, the contractor and subcontractors must check all details and dimensions of their trade and be responsible for the same.

ITEM	DATE
Drawn by: MRS	07-26-13

PUBLIC WORKS PROJECT #:
7100

SHEET TITLE:
***GRADING PLAN AND
EROSION CONTROL***

SHEET NUMBER:
1.4

Washington Manor Park Paving											
City of Madison, WI Public Works Contract #7100											
Date Revised: 7/24/2013											
Notes:											
Positive volumes are cuts, negative volumes are fills.											
Not all parts of all surface models (Digital Terrain Models) are used for computations or intended for actual construction.											
Area ID# groups											
	TA	Turf to Asphalt	TA								
	TT	Turf to Turf	TT								
Grp	ID#	Material	Item	From Surface Model	To Surface Model	area (sq ft)	depth (ft)	Unfac- tored	Unfac- tored	Expan- sion	Factored (Uncom-
TA		Topsoil Excavate	Remove top 4" of topsoil			7992	0.34	2717.28	100.6	0%	100.6
TA		Subsoil Excavate	Remove subsoil to within 12" of proposed grade	Ex-4inches	Pro-12inches		varies	2913.56	107.9	0%	107.9
TA		Gravel Place	Place 6" depth of gravel			7992	-0.50	-3996	-148.0	0%	-148.0
TA		Subsoil Place	Place subsoil for Asphalt Path	Ex-4inches	Pro-12inches		varies	-1670.19	-61.9	0%	-61.9
TA		Asphalt Place	Place 3" depth of asphalt for bike path construction			7090	-0.25	-1772.5	-65.6	0%	-65.6
TT		Topsoil Excavate	Remove 4" of topsoil			6074.5	0.33	2005	74.2	0%	74.2
TT		Subsoil Place	Place subsoil to within 6" of pro grade	Ex-4inches	Pro-6inches		varies	-2703	-100.1	0%	-100.1
TT		Subsoil Excavate	Excavate subsoil to within 6" of pro grade	Ex-4inches	Pro-6inches		varies	228	8.4	0%	8.4
TT		Topsoil Place	Place 6" of topsoil			6074.5	-0.50	-3037	-112.5	0%	-112.5

Washington Manor Park Paving

City of Madison, WI Public Works Contract #7100

Date Revised: 7/24/2013

Summary of stone (gravel) and soil quantities in the Bid Table.
Dervied from more detailed spreadsheet available from Parks Div

Preliminary Computation Summary

Positive volumes are cuts (material available), negative volumes are fills (material needed)

Row Labels	Sum of Unfac-tored volume (cu yd)
Asphalt Place	-65.6
Gravel Place	-148.0
Subsoil Excavate	116.3
Subsoil Place	-162.0
Topsoil Excavate	174.9
Topsoil Place	-112.5
Grand Total	-196.9

City of Madison
Department of Public Works
PARKS DIVISION

City-County Building, Suite 104
210 Martin Luther King, Jr. Blvd.
PO Box 2987
Madison, WI 53701-2987

play
MADISON
PARKS

PROJECT:

PARK PAVING 2013

WASHINGTON MANOR
PARK
801 NORTH OAK STREET
MADISON, WI

Although every effort has been made in preparing these plans and checking them for accuracy, the contractor and subcontractors must check all details and dimensions of their trade and be responsible for the same.

ITEM	DATE
Drawn by: MRS	07-26-13

PUBLIC WORKS PROJECT #:
7100

SHEET TITLE:
QUANTITY
CALCULATIONS

SHEET NUMBER:
1.5

PROJECT:

PARK PAVING 2013

*WASHINGTON MANOR
PARK
801 NORTH OAK STREET
MADISON, WI*

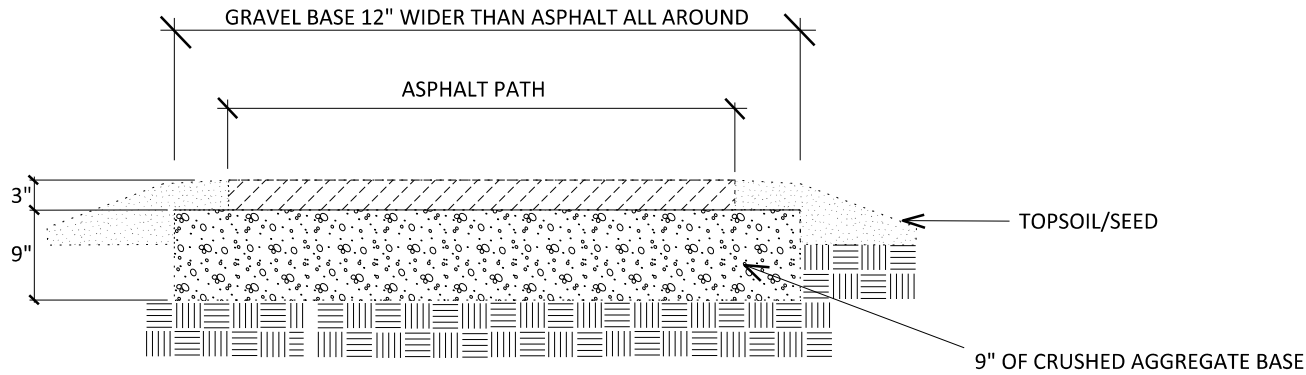
Although every effort has been made in preparing these plans and checking them for accuracy, the contractor and subcontractors must check all details and dimensions of their trade and be responsible for the same.

ITEM	DATE
Drawn by: MRS	07-26-13

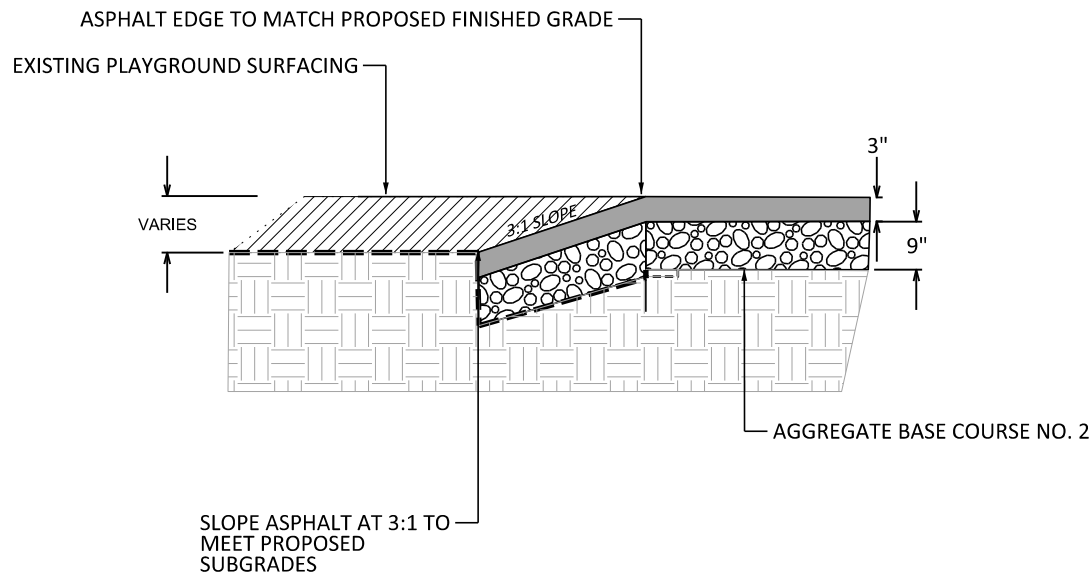
PUBLIC WORKS PROJECT #:
7100

SHEET TITLE:
DETAILS

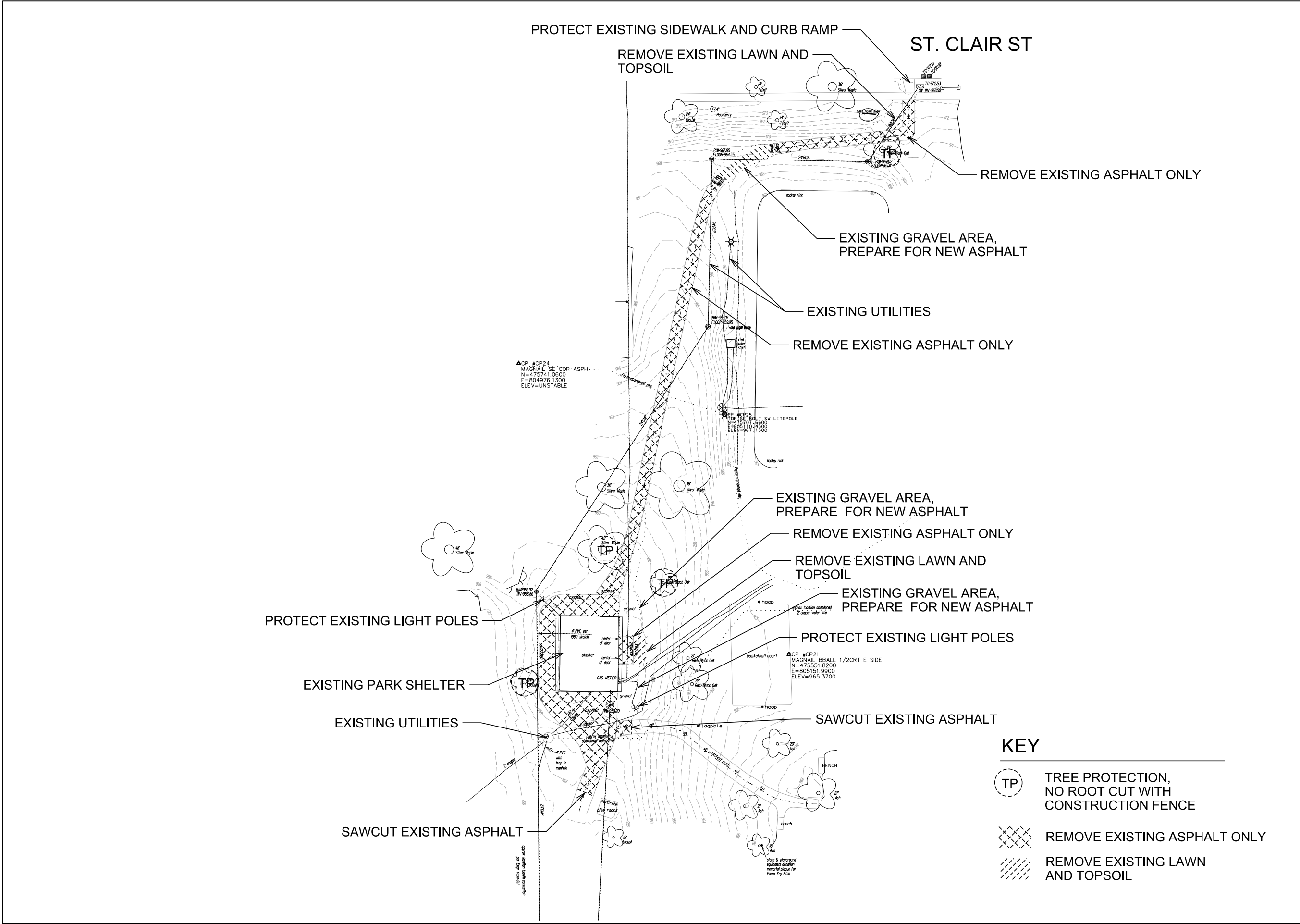
SHEET NUMBER:
1.6



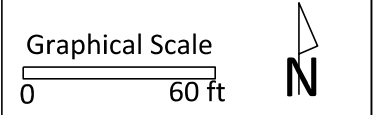
1
1.6 ASPHALT PATH SECTION (TYP.) NTS



2
1.6 ASPHALT PAVING AT PLAYGROUND SURFACING NTS



City of Madison
Department of Public Works
PARKS DIVISION
City-County Building, Suite 104
210 Martin Luther King, Jr. Blvd.
PO Box 2987
Madison, WI 53701-2987
play
MADISON
PARKS



PROJECT:

PARK PAVING 2013

WESTMORLAND PARK
4114 TOKAY BLVD
MADISON, WI

Although every effort has been made in preparing these plans and checking them for accuracy, the contractor and subcontractors must check all details and dimensions of their trade and be responsible for the same.

ITEM	DATE
Drawn by: MRS	07-26-13

PUBLIC WORKS PROJECT #:

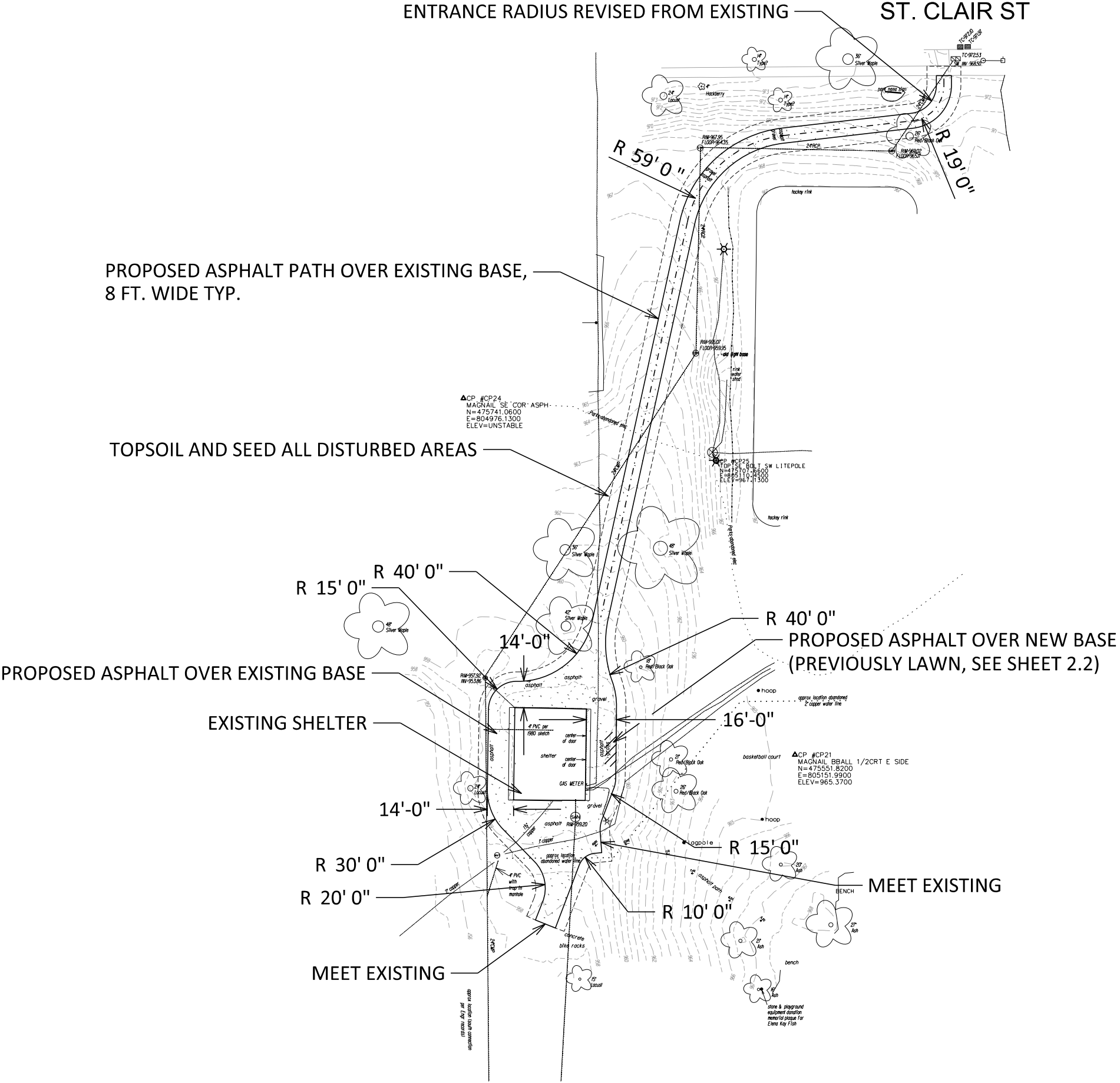
7100

SHEET TITLE:

DEMOLITION AND PROTECTION PLAN

SHEET NUMBER:

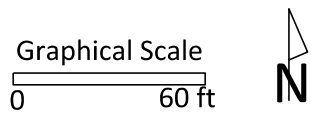
2.2



City of Madison
Department of Public Works
PARKS DIVISION

City-County Building, Suite 104
210 Martin Luther King, Jr. Blvd.
PO Box 2987
Madison, WI 53701-2987

play
**MADISON
PARKS**



PROJECT:

PARK PAVING 2013

*WESTMORLAND PARK
4114 TOKAY BLVD
MADISON, WI*

Although every effort has been made in preparing these plans and checking them for accuracy, the contractor and subcontractors must check all details and dimensions of their trade and be responsible for the same.

ITEM	DATE
Drawn by: MRS	07-26-13

PUBLIC WORKS PROJECT #:

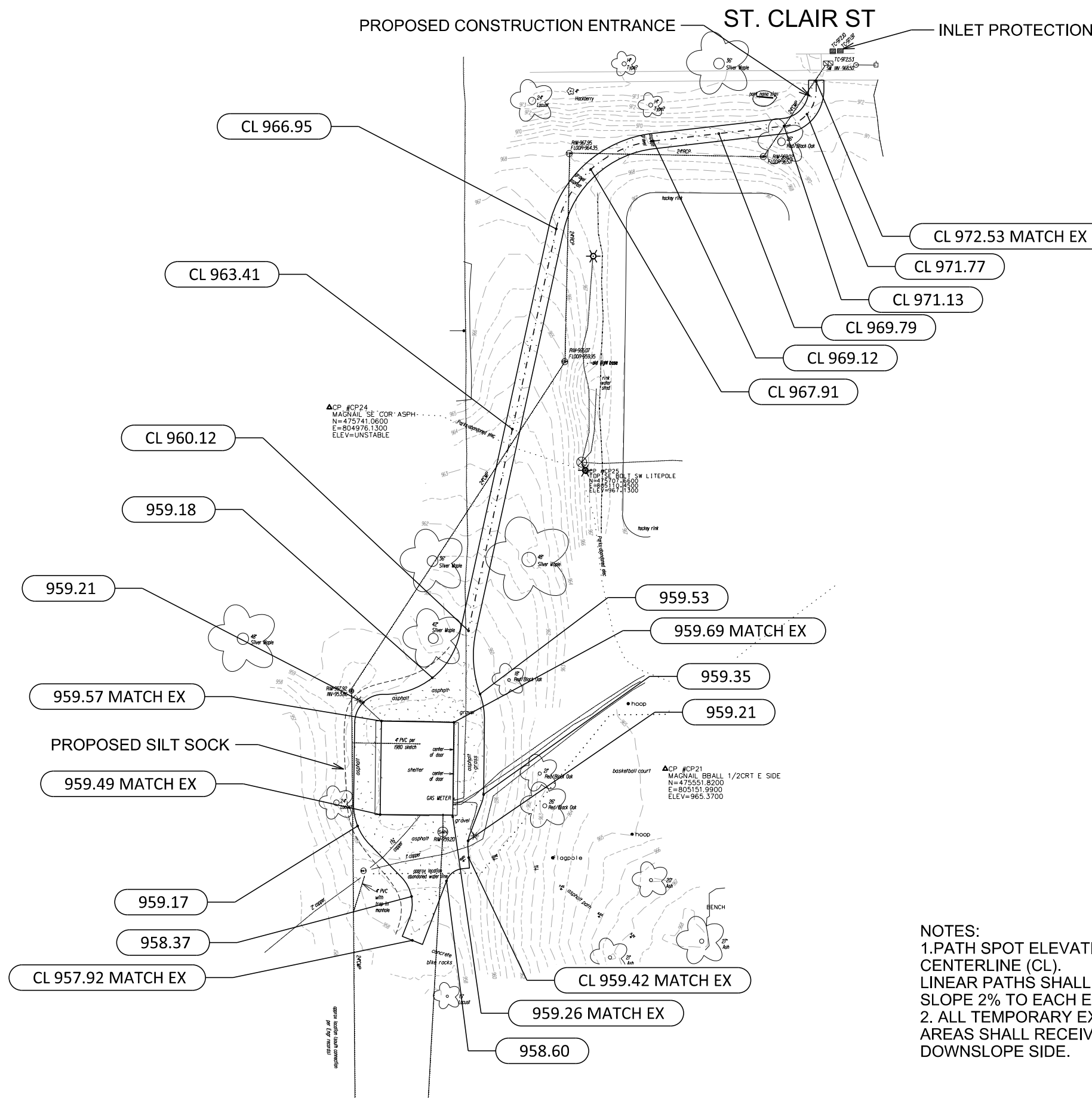
7100

SHEET TITLE:

LAYOUT PLAN

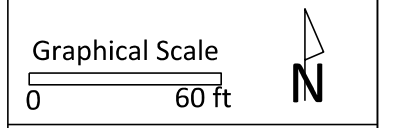
SHEET NUMBER:

2.3



NOTES:
1. PATH SPOT ELEVATIONS ARE FOR CENTERLINE (CL).
LINEAR PATHS SHALL BE CROWNED TO
SLOPE 2% TO EACH EDGE FROM CL.
2. ALL TEMPORARY EXCAVATION STORAGE
AREAS SHALL RECEIVE SILT SOCK ON THE
DOWNSLOPE SIDE.

City of Madison
Department of Public Works
PARKS DIVISION
City-County Building, Suite 104
210 Martin Luther King, Jr. Blvd.
PO Box 2987
Madison, WI 53701-2987
**play
MADISON
PARKS**



PROJECT:

PARK PAVING 2013

WESTMORLAND PARK
4114 TOKAY BLVD
MADISON, WI

Although every effort has been made in preparing these plans and checking them for accuracy, the contractor and subcontractors must check all details and dimensions of their trade and be responsible for the same.

ITEM	DATE
Drawn by: MRS	07-26-13

PUBLIC WORKS PROJECT #:
7100

SHEET TITLE:
**GRADING PLAN AND
EROSION CONTROL**

SHEET NUMBER:
2.4