



Department of Public Works
City Engineering Division

Robert F. Phillips, P.E.
City Engineer

City-County Building, Room 115
210 Martin Luther King, Jr. Boulevard
Madison, Wisconsin 53703
FAX 608 264 9275
www.cityofmadison.com

608 266 4751

Assistant City Engineer
Michael R. Dailey, P.E.

Principal Engineers
Christina M. Bachmann, P.E.
John S. Fahrney, P.E.
Gregory T. Fries, P.E.
Christopher J. Petykowski, P.E.

Facilities & Sustainability
Jeanne E. Hoffman, Manager

Operations Supervisor
Kathleen M. Cryan

Mapping Section Manager
Eric T. Pederson

Financial Officer
Steven B. Danner-Rivers

Hydrogeologist
Brynn Bemis

July 29, 2013

**NOTICE OF ADDENDUM
ADDENDUM NO. 1
HOYT PARK FENCE REPLACEMENTS
CONTRACT NO. 7150**

Revise and amend the contract document(s) for the above project as stated in this addendum, otherwise, the original document shall remain in effect.

PLANS

Replace Sheets L-2, L-3, and L-4 with revised Sheets L-2, L-3, and L-4 dated 07-29-2013. These sheets are updated to reflect clarification that seeding is excluded from this contract.

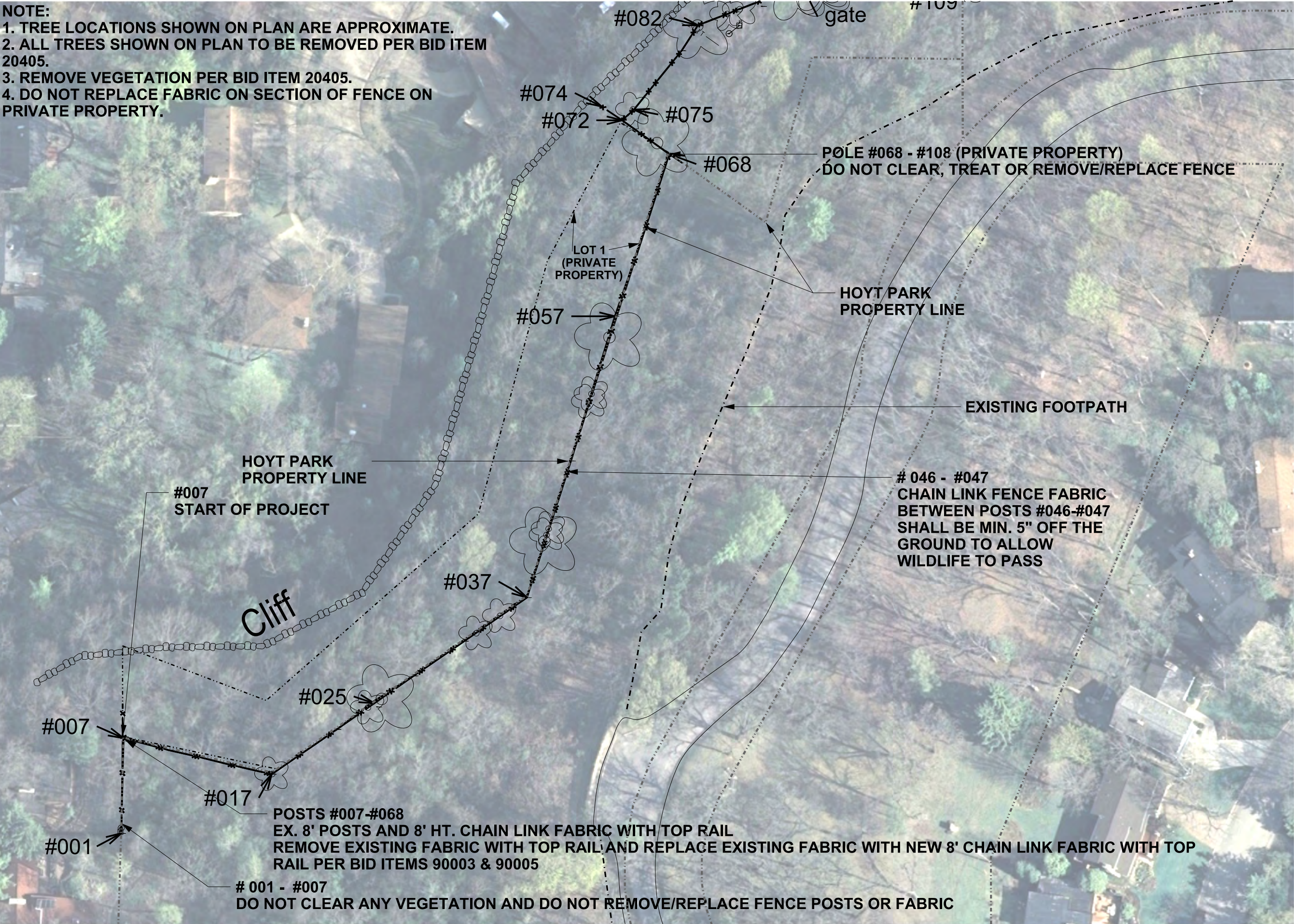
Please acknowledge this addendum on page E1 of the contract documents and/or in Section E: Bidder's Acknowledgement on Bid Express.

Electronic version of these documents can be found on Bid Express at <https://www.bidexpress.com>.

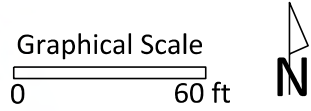
If you are unable to download plan revisions associated with the addendum, please contact the Engineering office at 608-266-4751 receive the material by another route.

Kevin Briski, Parks Superintendent

NOTE:
1. TREE LOCATIONS SHOWN ON PLAN ARE APPROXIMATE.
2. ALL TREES SHOWN ON PLAN TO BE REMOVED PER BID ITEM 20405.
3. REMOVE VEGETATION PER BID ITEM 20405.
4. DO NOT REPLACE FABRIC ON SECTION OF FENCE ON PRIVATE PROPERTY.



City of Madison
Department of Public Works
PARKS DIVISION
City-County Building, Suite 104
210 Martin Luther King, Jr. Blvd.
PO Box 2987
Madison, WI 53701-2987
play
MADISON
PARKS



PROJECT:
**HOYT PARK
FENCE
REPLACEMENTS**

**HOYT PARK
3902 REGENT STREET
MADISON, WI 53705**

Although every effort has been made in preparing these plans and checking them for accuracy, the contractor and subcontractors must check all details and dimensions of their trade and be responsible for the same.

ITEM	DATE
Drawn by: SCL	07-16-2013
Revised by: SCL	07-29-2013

PUBLIC WORKS PROJECT #:
7150

SHEET TITLE:
**SITE PLAN
POST #001-#081**

SHEET NUMBER:
L-2

- NOTE:
- 1. TREE LOCATIONS SHOWN ON PLAN ARE APPROXIMATE.
 - 2. ALL TREES SHOWN ON PLAN TO BE REMOVED PER BID ITEM 20405.
 - 3. REMOVE VEGETATION PER BID ITEM 20405.

POSTS #157 - #164
EX. ROUND POSTS
REMOVE EXISTING FABRIC AND REPLACE
WITH 6' HT. CHAIN LINK FABRIC PER BID
ITEMS 90003 & 90004.

POSTS #165 - #288
EX. ROUND POSTS ATTACHED TO SQUARE
H POSTS
REMOVE EXISTING FABRIC AND REPLACE
WITH 6' HT. CHAIN LINK FABRIC PER BID
ITEMS 90003 AND 90004.

PROPERTY LINE

POLE #068 - #108 (PRIVATE
PROPERTY)
END OF 8' HT. POLE
DO NOT CLEAR, TREAT OR
REMOVE/REPLACE FENCE

POSTS # 138- #156
EX. SQUARE H POSTS AND 6' HT. CHAIN LINK FABRIC
ADD POST LOOP CAP TO SQUARE H POSTS AND
REPLACE EXISTING FABRIC WITH 6' HT. CHAIN LINK FABRIC PER BID ITEMS
90003 AND 90004.

REMOVE WIRE MESH SECTION

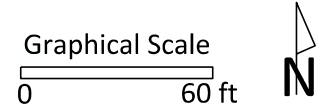
POSTS #114-#138
EX. 6' POSTS AND 6' HT. CHAIN LINK FABRIC
REPLACE EXISTING FABRIC WITH 6' HT. CHAIN LINK FABRIC PER BID
ITEMS 90003 & 90004.

POSTS #112-#113
EX. WIRE MESH AND 6' HT. CHAIN LINK FABRIC
KEEP WIRE MESH, REMOVE CHAIN LINK FABRIC PER BID ITEM
90003. DO NOT REPLACE CHAIN LINK FABRIC.

POSTS #109 - #112
EX. 6' HT. POLES AND FABRIC
REPLACE EXISTING FABRIC WITH 6' HT. CHAIN LINK FABRIC PER BID ITEM
90003 AND 90004.

KEEP EXISTING METAL GATE
AND FABRIC MESH AT SWALE

City of Madison
Department of Public Works
PARKS DIVISION
City-County Building, Suite 104
210 Martin Luther King, Jr. Blvd.
PO Box 2987
Madison, WI 53701-2987
play
MADISON
PARKS



PROJECT:

*HOYT PARK
FENCE
REPLACEMENTS*

*HOYT PARK
3902 REGENT STREET
MADISON, WI 53705*

Although every effort has been made in preparing these plans and checking them for accuracy, the contractor and subcontractors must check all details and dimensions of their trade and be responsible for the same.

ITEM	DATE
Drawn by: SCL	07-16-2013
Revised by:	07-29-2013

PUBLIC WORKS PROJECT #:

7150

SHEET TITLE:

*SITE PLAN
POST #081 - #222*

SHEET NUMBER:

L-3

- NOTE:
- 1. TREE LOCATIONS SHOWN ON PLAN ARE APPROXIMATE.
 - 2. ALL TREES SHOWN ON PLAN TO BE REMOVED PER BID ITEM 20405.
 - 3. REMOVE VEGETATION PER BID ITEM 20405.

POSTS #165 - #288
EX. ROUND POSTS ATTACHED TO SQUARE H
POSTS
REMOVE EXISTING FABRIC AND REPLACE WITH 6'
HT. CHAIN LINK FABRIC PER BID ITEMS 90003 &
90004.

HOYT PARK PROPERTY LINE

POSTS #288-#305
EX. 6' POSTS AND 6' HT. CHAIN LINK FABRIC
WITH TOP RAIL
REMOVE EXISTING FABRIC AND RAIL AND
REPLACE WITH 6' HT. CHAIN LINK FABRIC PER
BID ITEMS 90003 & 90004.

REMOVE EXISTING GATE AT SWALE PER
BID ITEM 90003, INSTALL CHAIN LINK
FABRIC PER BID ITEM 90004

POSTS #305 - #307
EX 6' HT. POSTS AND 5' HT. CHAIN LINK FABRIC
WITH A TOP RAIL
REMOVE EXISTING FABRIC AND RAIL AND
REPLACE WITH 6' HT. CHAIN LINK FABRIC PER
BID ITEMS 90003 AND 90004

POSTS #307 - #309
EX. 6' HT. POSTS AND FABRIC WITH A TOP RAIL
REMOVE EXISTING FABRIC AND RAIL AND
REPLACE WITH 6' HT. CHAIN LINK FABRIC PER
BID ITEMS 90003 AND 90004.

POSTS #309 - #318
EX. 6' HT POSTS AND FABRIC
REPLACE EXISTING FABRIC WITH 6' HT. CHAIN
LINK FABRIC PER BID ITEMS 90003 AND 90004

#316 - #331
EXISTING 5.5' HT. POLES AND FABRIC WITHOUT A
TOP RAIL
REMOVE AND REPLACE EXISTING POLES PER BID
ITEMS 90001 AND 90002
REMOVE EXISTING FABRIC AND REPLACE WITH 6'
HT. CHAIN LINK FABRIC PER BID ITEMS 90003 AND
90004

#282
#276
#272
#263
#253
#254
#293
#296
gate

#305
#307
#309

#318
#332
#339

#345
#344
#349
#354
#359
gate

END OF PROJECT

HOYT PARK PROPERTY LINE

City of Madison
Department of Public Works
PARKS DIVISION

City-County Building, Suite 104
210 Martin Luther King, Jr. Blvd.
PO Box 2987
Madison, WI 53701-2987

play
**MADISON
PARKS**

Graphical Scale
0 60 ft
N

PROJECT:
*HOYT PARK
FENCE
REPLACEMENTS*

*HOYT PARK
3902 REGENT STREET
MADISON, WI 53705*

Although every effort has been made in preparing these
plans and checking them for accuracy, the contractor and
subcontractors must check all details and dimensions of
their trade and be responsible for the same.

ITEM	DATE
Drawn by: SCL	07-16-2013
Revised by: SCL	07-29-2013

PUBLIC WORKS PROJECT #:
7150

SHEET TITLE:
*SITE PLAN
POST #222 TO #358*

SHEET NUMBER:
L-4