

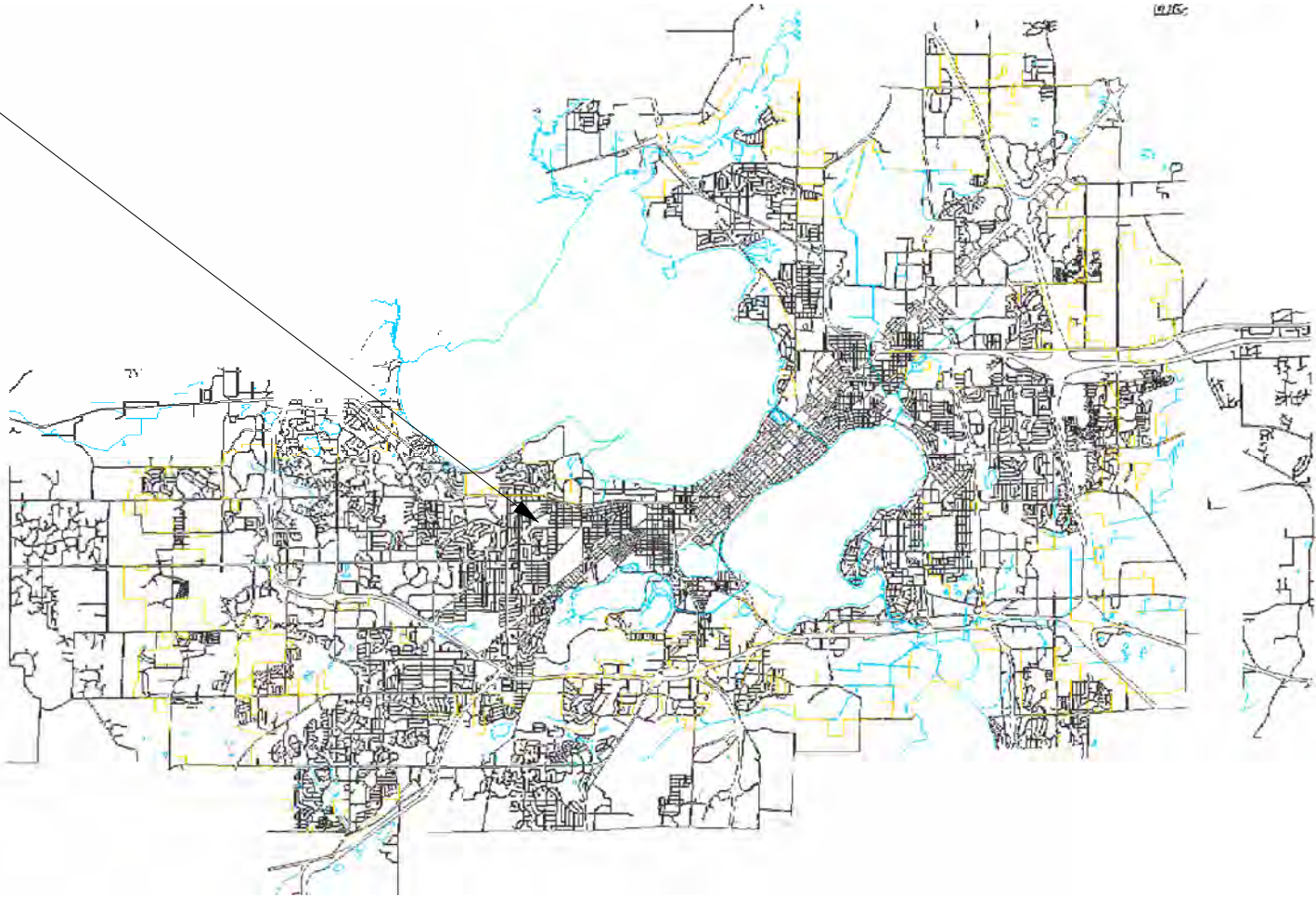
- SHEET SCHEDULE
- L-1 EXISTING SITE PLAN
 - L-2 SITE PLAN POST #001-#081
 - L-3 SITE PLAN POST #081-#222
 - L-4 SITE PLAN POST #222-#358
 - L-5 CHAIN LINK FENCE DETAIL
 - L-6 FENCE INVENTORY 1-50
 - L-7 FENCE INVENTORY 51-100
 - L-8 FENCE INVENTORY 101-150
 - L-9 FENCE INVENTORY 151-200
 - L-10 FENCE INVENTORY 201-250
 - L-11 FENCE INVENTORY 251-300
 - L-12 FENCE INVENTORY 301-350

City of Madison
Department of Public Works
PARKS DIVISION
*City-County Building, Suite 104
210 Martin Luther King, Jr. Blvd.
PO Box 2987
Madison, WI 53701-2987*
play
MADISON
PARKS



HOYT PARK FENCE REPLACEMENTS
CONTRACT 7150

HOYT PARK
3902 REGENT STREET
MADISON, WI 53705



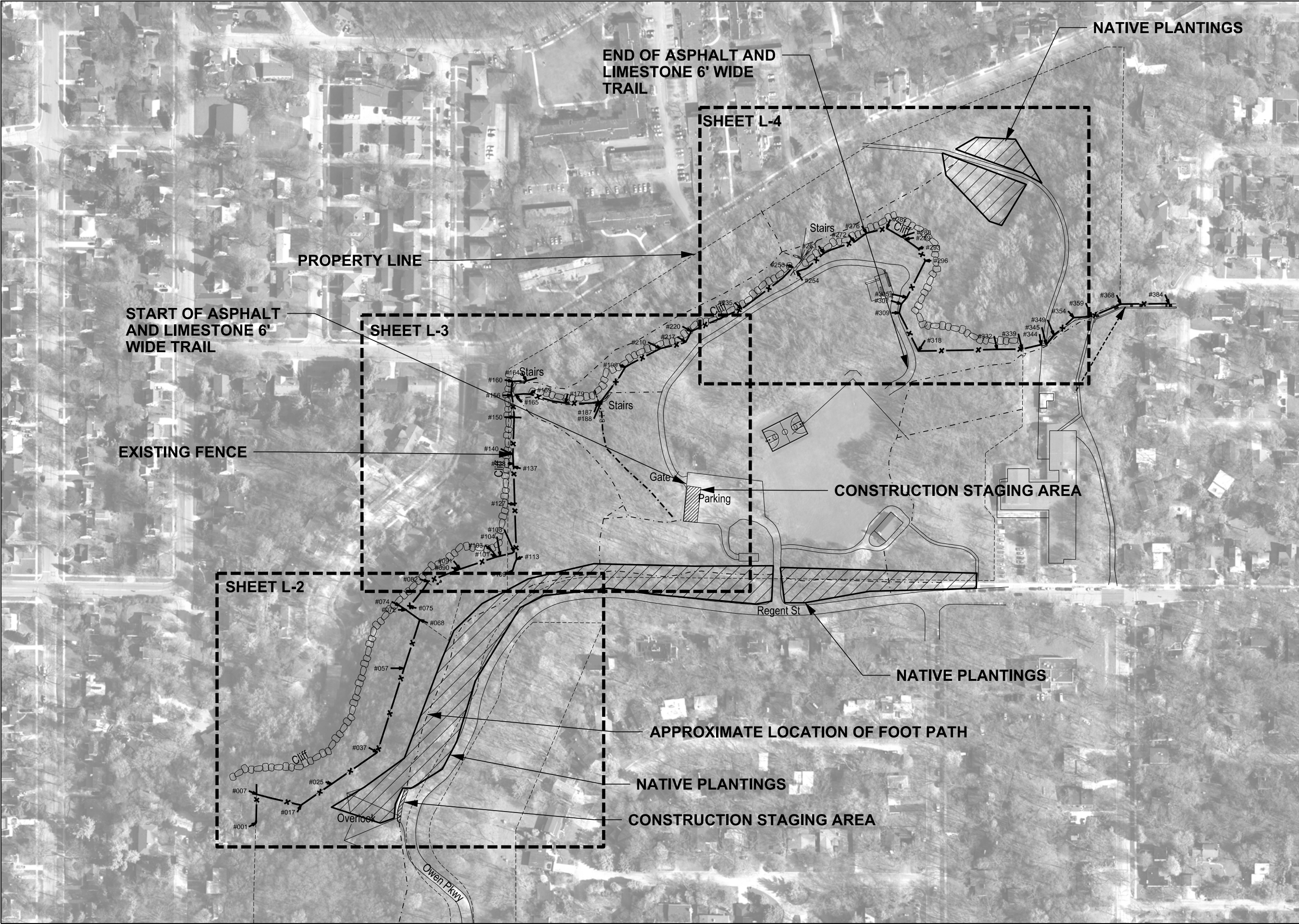
PROJECT:
*HOYT PARK
FENCE
REPLACEMENTS*

Although every effort has been made in preparing these plans and checking them for accuracy, the contractor and subcontractors must check all details and dimensions of their trade and be responsible for the same.

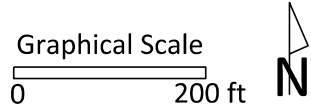
ITEM	DATE
Drawn by: SCL	07-16-2013

SHEET TITLE:

SHEET NUMBER:



City of Madison
Department of Public Works
PARKS DIVISION
City-County Building, Suite 104
210 Martin Luther King, Jr. Blvd.
PO Box 2987
Madison, WI 53701-2987
play
MADISON
PARKS



PROJECT:
**HOYT PARK
FENCE
REPLACEMENT**

**HOYT PARK
3902 REGENT STREET
MADISON, WI 53705**

Although every effort has been made in preparing these plans and checking them for accuracy, the contractor and subcontractors must check all details and dimensions of their trade and be responsible for the same.

ITEM	DATE
Drawn by: SCL	07-16-2013
Approved by:	XX-XX-XXXX

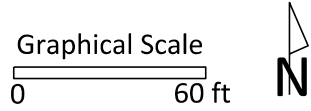
PUBLIC WORKS PROJECT #:
7150

SHEET TITLE:
EXISTING SITE PLAN

SHEET NUMBER:
L-1

- NOTE:
- 1. TREE LOCATIONS SHOWN ON PLAN ARE APPROXIMATE.
 - 2. ALL TREES SHOWN ON PLAN TO BE REMOVED PER BID ITEM 20405.
 - 3. REMOVE VEGETATION PER BID ITEM 20405.
 - 4. SEED PER BID ITEM 20701.
 - 5. DO NOT REPLACE FABRIC ON SECTION OF FENCE ON PRIVATE PROPERTY.

City of Madison
Department of Public Works
PARKS DIVISION
City-County Building, Suite 104
210 Martin Luther King, Jr. Blvd.
PO Box 2987
Madison, WI 53701-2987
play
**MADISON
PARKS**



PROJECT:
*HOYT PARK
FENCE
REPLACEMENTS*

*HOYT PARK
3902 REGENT STREET
MADISON, WI 53705*

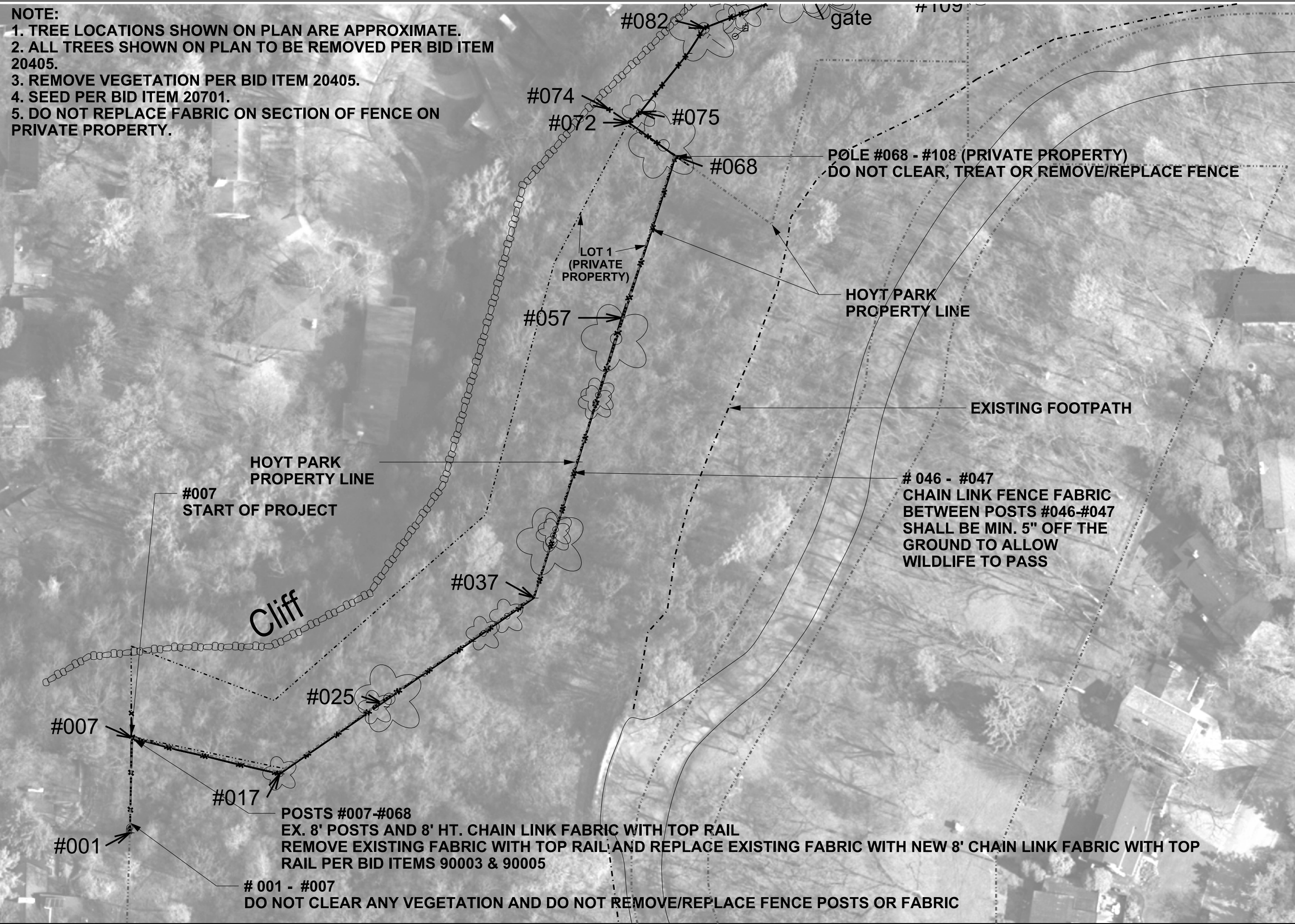
Although every effort has been made in preparing these plans and checking them for accuracy, the contractor and subcontractors must check all details and dimensions of their trade and be responsible for the same.

ITEM	DATE
Drawn by: SCL	07-16-2013
Approved by:	XX-XX-XXXX

PUBLIC WORKS PROJECT #:
7150

SHEET TITLE:
*SITE PLAN
POST #001-#081*

SHEET NUMBER:
L-2



- NOTE:
- 1. TREE LOCATIONS SHOWN ON PLAN ARE APPROXIMATE.
 - 2. ALL TREES SHOWN ON PLAN TO BE REMOVED PER BID ITEM 20405.
 - 3. REMOVE VEGETATION PER BID ITEM 20405.
 - 4. SEED PER BID ITEM 20701.

POSTS #157 - #164
EX. ROUND POSTS
REMOVE EXISTING FABRIC AND REPLACE
WITH 6' HT. CHAIN LINK FABRIC PER BID
ITEMS 90003 & 90004.

POSTS #165 - #288
EX. ROUND POSTS ATTACHED TO SQUARE
H POSTS
REMOVE EXISTING FABRIC AND REPLACE
WITH 6' HT. CHAIN LINK FABRIC PER BID
ITEMS 90003 AND 90004.

PROPERTY LINE

POLE #068 - #108 (PRIVATE
PROPERTY)
END OF 8' HT. POLE
DO NOT CLEAR, TREAT OR
REMOVE/REPLACE FENCE

POSTS # 138- #156
EX. SQUARE H POSTS AND 6' HT. CHAIN LINK FABRIC
ADD POST LOOP CAP TO SQUARE H POSTS AND
REPLACE EXISTING FABRIC WITH 6' HT. CHAIN LINK FABRIC PER BID ITEMS
90003 AND 90004.

REMOVE WIRE MESH SECTION

POSTS #114-#138
EX. 6' POSTS AND 6' HT. CHAIN LINK FABRIC
REPLACE EXISTING FABRIC WITH 6' HT. CHAIN LINK FABRIC PER BID
ITEMS 90003 & 90004.

POSTS #112-#113
EX. WIRE MESH AND 6' HT. CHAIN LINK FABRIC
KEEP WIRE MESH, REMOVE CHAIN LINK FABRIC PER BID ITEM
90003. DO NOT REPLACE CHAIN LINK FABRIC.

POSTS #109 - #112
EX. 6' HT. POLES AND FABRIC
REPLACE EXISTING FABRIC WITH 6' HT. CHAIN LINK FABRIC PER BID ITEM
90003 AND 90004.

KEEP EXISTING METAL GATE
AND FABRIC MESH AT SWALE

City of Madison
Department of Public Works
PARKS DIVISION

City-County Building, Suite 104
210 Martin Luther King, Jr. Blvd.
PO Box 2987
Madison, WI 53701-2987

play
**MADISON
PARKS**

Graphical Scale
0 60 ft
N

PROJECT:
*HOYT PARK
FENCE
REPLACEMENTS*

*HOYT PARK
3902 REGENT STREET
MADISON, WI 53705*

Although every effort has been made in preparing these
plans and checking them for accuracy, the contractor and
subcontractors must check all details and dimensions of
their trade and be responsible for the same.

ITEM	DATE
Drawn by: SCL	07-16-2013
Approved by:	XX-XX-XXXX

PUBLIC WORKS PROJECT #:
7150

SHEET TITLE:
*SITE PLAN
POST #081 - #222*

SHEET NUMBER:
L-3

- NOTE:
- 1. TREE LOCATIONS SHOWN ON PLAN ARE APPROXIMATE.
 - 2. ALL TREES SHOWN ON PLAN TO BE REMOVED PER BID ITEM 20405.
 - 3. REMOVE VEGETATION PER BID ITEM 20405.
 - 4. SEED PER BID ITEM 20701.

POSTS #165 - #288
EX. ROUND POSTS ATTACHED TO SQUARE H
POSTS
REMOVE EXISTING FABRIC AND REPLACE WITH 6'
HT. CHAIN LINK FABRIC PER BID ITEMS 90003 &
90004.

HOYT PARK PROPERTY LINE

POSTS #288-#305
EX. 6' POSTS AND 6' HT. CHAIN LINK FABRIC
WITH TOP RAIL
REMOVE EXISTING FABRIC AND RAIL AND
REPLACE WITH 6' HT. CHAIN LINK FABRIC PER
BID ITEMS 90003 & 90004.

REMOVE EXISTING GATE AT SWALE PER
BID ITEM 90003, INSTALL CHAIN LINK
FABRIC PER BID ITEM 90004

POSTS #305 - #307
EX 6' HT. POSTS AND 5' HT. CHAIN LINK FABRIC
WITH A TOP RAIL
REMOVE EXISTING FABRIC AND RAIL AND
REPLACE WITH 6' HT. CHAIN LINK FABRIC PER
BID ITEMS 90003 AND 90004

POSTS #307 - #309
EX. 6' HT. POSTS AND FABRIC WITH A TOP RAIL
REMOVE EXISTING FABRIC AND RAIL AND
REPLACE WITH 6' HT. CHAIN LINK FABRIC PER
BID ITEMS 90003 AND 90004.

POSTS #309 - #318
EX. 6' HT POSTS AND FABRIC
REPLACE EXISTING FABRIC WITH 6' HT. CHAIN
LINK FABRIC PER BID ITEMS 90003 AND 90004

#316 - #331
EXISTING 5.5' HT. POLES AND FABRIC WITHOUT A
TOP RAIL
REMOVE AND REPLACE EXISTING POLES PER BID
ITEMS 90001 AND 90002
REMOVE EXISTING FABRIC AND REPLACE WITH 6'
HT. CHAIN LINK FABRIC PER BID ITEMS 90003 AND
90004

#282
#276
#272
#263
#253
#254
#293
#296
gate

#305
#307
#309

#318
#332
#339
#344
#345
#349
#354
#359
gate

END OF PROJECT

HOYT PARK PROPERTY LINE

City of Madison
Department of Public Works
PARKS DIVISION

City-County Building, Suite 104
210 Martin Luther King, Jr. Blvd.
PO Box 2987
Madison, WI 53701-2987

play
**MADISON
PARKS**

Graphical Scale
0 60 ft
N

PROJECT:
*HOYT PARK
FENCE
REPLACEMENTS*

*HOYT PARK
3902 REGENT STREET
MADISON, WI 53705*

Although every effort has been made in preparing these
plans and checking them for accuracy, the contractor and
subcontractors must check all details and dimensions of
their trade and be responsible for the same.

ITEM	DATE
Drawn by: SCL	07-16-2013
Approved by:	XX-XX-XXXX

PUBLIC WORKS PROJECT #:
7150

SHEET TITLE:
*SITE PLAN
POST #222 TO #358*

SHEET NUMBER:
L-4

PROJECT:
***HOYT PARK
FENCE
REPLACEMENTS***

***HOYT PARK
3902 REGENT STREET
MADISON, WI 53705***

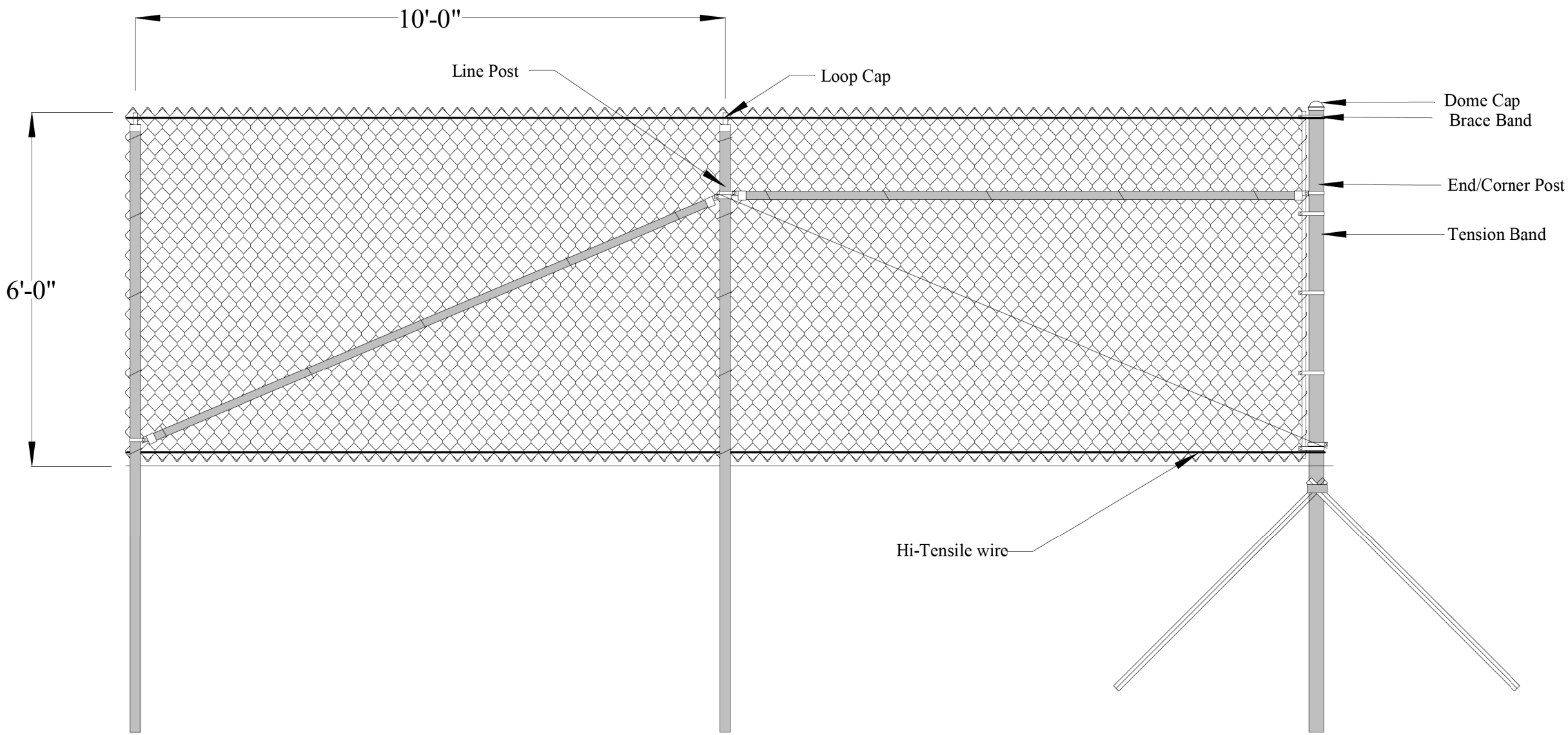
Although every effort has been made in preparing these plans and checking them for accuracy, the contractor and subcontractors must check all details and dimensions of their trade and be responsible for the same.

ITEM	DATE
Drawn by: SCL	07-16-2013
Approved by:	XX-XX-XXXX

PUBLIC WORKS PROJECT #:
7150

SHEET TITLE:
***CHAIN LINK FENCE
DETAIL***

SHEET NUMBER:
L-5



Pole#	# trees >2in DBH	# trees >10in DBH	Notes	Fence Type	Height (ft)	Pole Type	Top Bar	Corner Bracing?	Ownership / Notes
1				ch lk	8	Round	Yes	No	Parks (required by deed Doc# 1724816)
2				ch lk	8	Round	Yes		Parks (required by deed Doc# 1724816)
3				ch lk	8	Round	Yes		Parks (required by deed Doc# 1724816)
4				ch lk	8	Round	Yes		Parks (required by deed Doc# 1724816)
5				ch lk	8	Round	Yes		Parks (required by deed Doc# 1724816)
6				ch lk	8	Round	Yes		Parks (required by deed Doc# 1724816)
7			connects to 3ft high wire fence from north	ch lk	8	Round	Yes	No	Parks (required by deed Doc# 1724816)
8				ch lk	8	Round	Yes		Parks (required by deed Doc# 1724816)
9				ch lk	8	Round	Yes		Parks (required by deed Doc# 1724816)
10			Small branches grown in fabric	ch lk	8	Round	Yes		Parks (required by deed Doc# 1724816)
11			Small branches grown in fabric	ch lk	8	Round	Yes		Parks (required by deed Doc# 1724816)
12			Small branches grown in fabric	ch lk	8	Round	Yes		Parks (required by deed Doc# 1724816)
13				ch lk	8	Round	Yes		Parks (required by deed Doc# 1724816)
14			Small branches grown in fabric	ch lk	8	Round	Yes	No	Parks (required by deed Doc# 1724816)
15			fabric cut	ch lk	8	Round	Yes		Parks (required by deed Doc# 1724816)
16				ch lk	8	Round	Yes		Parks (required by deed Doc# 1724816)
17	1		2in Black Walnut tree grown in fabric	ch lk	8	Round	Yes	Yes	Parks (required by deed Doc# 1724816)
18				ch lk	8	Round	Yes		Parks (required by deed Doc# 1724816)
19				ch lk	8	Round	Yes		Parks (required by deed Doc# 1724816)
20				ch lk	8	Round	Yes		Parks (required by deed Doc# 1724816)
21				ch lk	8	Round	Yes		Parks (required by deed Doc# 1724816)
22			fabric cut	ch lk	8	Round	Yes		Parks (required by deed Doc# 1724816)
23				ch lk	8	Round	Yes		Parks (required by deed Doc# 1724816)
24	1		1in Buckthorn tree grown in fabric	ch lk	8	Round	Yes		Parks (required by deed Doc# 1724816)
25				ch lk	8	Round	Yes		Parks (required by deed Doc# 1724816)
26	1	1	15in 3-trunk Black Oak tree grown in fabric	ch lk	8	Round	Yes		Parks (required by deed Doc# 1724816)
27				ch lk	8	Round	Yes		Parks (required by deed Doc# 1724816)
28			Small branches grown in fabric	ch lk	8	Round	Yes		Parks (required by deed Doc# 1724816)
29			Small branches grown in fabric	ch lk	8	Round	Yes		Parks (required by deed Doc# 1724816)
30			Small branches grown in fabric	ch lk	8	Round	Yes		Parks (required by deed Doc# 1724816)
31			Small branches grown in fabric	ch lk	8	Round	Yes		Parks (required by deed Doc# 1724816)
32			Small branches grown in fabric	ch lk	8	Round	Yes		Parks (required by deed Doc# 1724816)
33	1		3in branch (inv.) fell on fence (no damage)	ch lk	8	Round	Yes		Parks (required by deed Doc# 1724816)
34				ch lk	8	Round	Yes		Parks (required by deed Doc# 1724816)
35	1		2in tree (inv.) grown in fabric	ch lk	8	Round	Yes		Parks (required by deed Doc# 1724816)
36				ch lk	8	Round	Yes		Parks (required by deed Doc# 1724816)
37			Small branches grown in fabric	ch lk	8	Round	Yes	Yes	Parks (required by deed Doc# 1724816)
38			Small branches grown in fabric	ch lk	8	Round	Yes		Parks (required by deed Doc# 1724816)
39			Small branches grown in fabric	ch lk	8	Round	Yes		Parks (required by deed Doc# 1724816)
40				ch lk	8	Round	Yes		Parks (required by deed Doc# 1724816)
41	1	1	15in Walnut tree against fabric side of fence	ch lk	8	Round	Yes		Parks (required by deed Doc# 1724816)
42	1		5in dead tree fell on fence (no damage)	ch lk	8	Round	Yes		Parks (required by deed Doc# 1724816)
43	1		2in Hackberry trees (x2) grown in fabric	ch lk	8	Round	Yes		Parks (required by deed Doc# 1724816)
44				ch lk	8	Round	Yes		Parks (required by deed Doc# 1724816)
45				ch lk	8	Round	Yes		Parks (required by deed Doc# 1724816)
46			fabric cut	ch lk	8	Round	Yes		Parks (required by deed Doc# 1724816)
47				ch lk	8	Round	Yes		Parks (required by deed Doc# 1724816)
48				ch lk	8	Round	Yes		Parks (required by deed Doc# 1724816)
49				ch lk	8	Round	Yes		Parks (required by deed Doc# 1724816)
50				ch lk	8	Round	Yes		Parks (required by deed Doc# 1724816)

City of Madison
Department of Public Works
PARKS DIVISION

City-County Building, Suite 104
210 Martin Luther King, Jr. Blvd.
PO Box 2987
Madison, WI 53701-2987

play
**MADISON
PARKS**

PROJECT:

*HOYT PARK
FENCE
REPLACEMENTS*

*HOYT PARK
3902 REGENT STREET
MADISON, WI 53705*

Although every effort has been made in preparing these plans and checking them for accuracy, the contractor and subcontractors must check all details and dimensions of their trade and be responsible for the same.

ITEM	DATE
Drawn by: SCL	07-16-2013
Approved by:	xx-xx-xxxx

PUBLIC WORKS PROJECT #:
7150

SHEET TITLE:
***FENCE INVENTORY
1-50***

SHEET NUMBER:
L-6

Pole#	# trees >2in DBH	# trees >10in DBH	Notes	Fence Type	Height (ft)	Pole Type	Top Bar	Corner Bracing?	Ownership / Notes
51	1		3in Hackberry tree grown in fabric	ch lk	8	Round	Yes		Parks (required by deed Doc# 1724816)
52	1		4in Walnut tree grown in fabric	ch lk	8	Round	Yes		Parks (required by deed Doc# 1724816)
53				ch lk	8	Round	Yes		Parks (required by deed Doc# 1724816)
54				ch lk	8	Round	Yes		Parks (required by deed Doc# 1724816)
55	1	1	16in 2-trunk Walnut tree - one trunk grown in fabric	ch lk	8	Round	Yes		Parks (required by deed Doc# 1724816)
56				ch lk	8	Round	Yes		Parks (required by deed Doc# 1724816)
57			Small branches grown in fabric	ch lk	8	Round	Yes		Parks (required by deed Doc# 1724816)
58			Small branches grown in fabric	ch lk	8	Round	Yes		Parks (required by deed Doc# 1724816)
59	1	1	2in branch fell on fence from 12in dead tree ~4ft from fence (no damage) - remove dead tree	ch lk	8	Round	Yes		Parks (required by deed Doc# 1724816)
60			Small branches grown in fabric	ch lk	8	Round	Yes		Parks (required by deed Doc# 1724816)
61				ch lk	8	Round	Yes		Parks (required by deed Doc# 1724816)
62			Small branches grown in fabric	ch lk	8	Round	Yes		Parks (required by deed Doc# 1724816)
63			Small branches grown in fabric	ch lk	8	Round	Yes		Parks (required by deed Doc# 1724816)
64			Small branches grown in fabric	ch lk	8	Round	Yes		Parks (required by deed Doc# 1724816)
65			Small branches grown in fabric	ch lk	8	Round	Yes		Parks (required by deed Doc# 1724816)
66			Small branches grown in fabric	ch lk	8	Round	Yes		Parks (required by deed Doc# 1724816)
67				ch lk	8	Round	Yes		Parks (required by deed Doc# 1724816)
68				ch lk	8	Round	Yes	Yes	Parks (required by deed Doc# 1724816)
69	1	1	12in Bur Oak tree 1ft north of fence	ch lk	8	Round	Yes		Parks (required by deed Doc# 1724816)
70				ch lk	8	Round	Yes		Parks (required by deed Doc# 1724816)
71				ch lk	8	Round	Yes		Parks (required by deed Doc# 1724816)
72			3-way intersection	ch lk	8	Round	Yes	No	Parks (required by deed Doc# 1724816)
73			Stub to edge of cliff	ch lk	8	Round	Yes		Private
74			Stub to edge of cliff	ch lk	8	Round	Yes		Private
75	1		3in tree (inv.) grown in fabric	ch lk	8	Round	Yes		Private
76				ch lk	8	Round	Yes		Private
77				ch lk	8	Round	Yes		Private
78				ch lk	8	Round	Yes		Private
79				ch lk	8	Round	Yes		Private
80				ch lk	8	Round	Yes		Private
81			Ditch goes west under fence	ch lk	8	Round	Yes		Private
82	1	1	10in Black Locust tree against fabric (fabric side of fence)	ch lk	8	Round	Yes	No	Private
83				ch lk	8	Round	Yes		Private
84				ch lk	8	Round	Yes		Private
85	1		2in dead tree grown in fabric	ch lk	8	Round	Yes		Private
86	1		2in branch fell on fence (no damage)	ch lk	8	Round	Yes		Private
87			Small branches grown in fabric	ch lk	8	Round	Yes		Private
88			Small branches grown in fabric	ch lk	8	Round	Yes		Private
89			Small branches grown in fabric	ch lk	8	Round	Yes		Private
90	1	1	Gate here. 12in dead Hackberry tree on fence (no damage)	ch lk	8	Round	Yes	No	Private
91			Gate here	ch lk	8	Round	Yes	No	Private
92	2	2	15in Hackberry & 18in Cherry tree fell on fence (top bar bent)	ch lk	8	Round	Yes		Private
93				ch lk	8	Round	Yes		Private
94				ch lk	8	Round	Yes		Private
95	2	1	12in dead Black Oak tree fell on fence (top bar bent); 6in dead Black Oak tree fell on fence (no damage)	ch lk	8	Round	Yes		Private
96	1	1	multiple 2-8in branches from dead Black Oak tree fell on fence (top bar bent)	ch lk	8	Round	Yes		Private
97				ch lk	8	Round	Yes		Private
98				ch lk	8	Round	Yes		Private
99				ch lk	8	Round	Yes		Private
100	1	1	18in Walnut tree against fabric (fabric side of fence)	ch lk	8	Round	Yes		Private

City of Madison
Department of Public Works
PARKS DIVISION

City-County Building, Suite 104
210 Martin Luther King, Jr. Blvd.
PO Box 2987
Madison, WI 53701-2987

play
**MADISON
PARKS**

PROJECT:

*HOYT PARK
FENCE
REPLACEMENTS*

*HOYT PARK
3902 REGENT STREET
MADISON, WI 53705*

Although every effort has been made in preparing these plans and checking them for accuracy, the contractor and subcontractors must check all details and dimensions of their trade and be responsible for the same.

ITEM	DATE
Drawn by: SCL	07-16-2013
Approved by:	XX-XX-XXXX

PUBLIC WORKS PROJECT #:
7150

SHEET TITLE:

***FENCE INVENTORY
51-100***

SHEET NUMBER:

L-7

Pole#	# trees >2in DBH	# trees >10in DBH	Notes	Fence Type	Height (ft)	Pole Type	Top Bar	Corner Bracing?	Ownership / Notes
101			3-way corner with old 5ft wire fence	ch lk	8	Round	Yes	No	Private
102			Stub to edge of cliff	ch lk	8	Round	Yes		Private
103			Stub to edge of cliff	ch lk	8	Round	Yes		Private
104			5ft wire fence	wire	5	n/a	No		Private
105			5ft wire fence	wire	5	n/a	No		Private
106			5ft wire fence	wire	5	n/a	No		Private
107			5ft wire fence	wire	5	n/a	No		Parks
108			5ft wire fence (ends at 6ft chain link fence)	wire	5	n/a	No		Parks
109			Start 6ft chain link fence	ch lk	6	Round	No	No	Parks
110				ch lk	6	Round	No		Parks
111	1	1	16in dead Oak tree fell on fence (poles OK)	ch lk	6	Round	No	No	Parks
112			wire mesh between 112 & 113	ch lk & wire mesh	6	Round	No		Parks
113			wire mesh between 112 & 113	ch lk & wire mesh	6	Round	No		Parks
114				ch lk	6	Round	No		Parks
115	1		8in Elm tree grown in fabric	ch lk	6	Round	No		Parks
116				ch lk	6	Round	No		Parks
117	1	1	10 Black Cherry tree leans on fence	ch lk	6	Round	No		Parks
118			Small branches grown in fabric	ch lk	6	Round	No		Parks
119			Small branches grown in fabric	ch lk	6	Round	No		Parks
120			Small branches grown in fabric	ch lk	6	Round	No		Parks
121			Small branches grown in fabric	ch lk	6	Round	No		Parks
122			Small branches grown in fabric	ch lk	6	Round	No		Parks
123	1		2in dead Black Locust tree grown in fabric	ch lk	6	Round	No		Parks
124			Small branches grown in fabric	ch lk	6	Round	No		Parks
125			Small branches grown in fabric	ch lk	6	Round	No		Parks
126			Small branches grown in fabric	ch lk	6	Round	No		Parks
127			Small branches grown in fabric	ch lk	6	Round	No		Parks
128			Small branches grown in fabric	ch lk	6	Round	No		Parks
129				ch lk	6	Round	No		Parks
130	3		6in dead Black Locust trees (x3) fell on fabric (poles OK)	ch lk	6	Round	No		Parks
131				ch lk	6	Round	No		Parks
132	2		2in dead branches (x2) grown in fabric	ch lk	6	Round	No		Parks
133				ch lk	6	Round	No		Parks
134	1		8in Hackberry tree grown in fabric	ch lk	6	Round	No		Parks
135				ch lk	6	Round	No		Parks
136				ch lk	6	Round	No		Parks
137				ch lk	6	Round	No		Parks
138			has 2 horizontal brace bars back to old H-post 1ft west of #137	ch lk	6	Square H	No		Parks
139			139-140 has horizontal & vertical brace bars	ch lk	6	Square H	No		Parks
140			Small branches grown in fabric	ch lk	6	Square H	No		Parks
141			Small branches grown in fabric	ch lk	6	Square H	No		Parks
142			Small branches grown in fabric	ch lk	6	Square H	No		Parks
143			Small branches grown in fabric	ch lk	6	Square H	No		Parks
144			Small branches grown in fabric	ch lk	6	Square H	No		Parks
145			Small branches grown in fabric	ch lk	6	Square H	No		Parks
146			Small branches grown in fabric	ch lk	6	Square H	No		Parks
147			Small branches grown in fabric	ch lk	6	Square H	No		Parks
148			Small branches grown in fabric	ch lk	6	Square H	No		Parks
149			Small branches grown in fabric	ch lk	6	Square H	No		Parks
150			Intersection with wire mesh fence across swale	ch lk	6	Square H	No		Parks

City of Madison
Department of Public Works
PARKS DIVISION
*City-County Building, Suite 104
210 Martin Luther King, Jr. Blvd.
PO Box 2987
Madison, WI 53701-2987*
play
**MADISON
PARKS**

PROJECT:

*HOYT PARK
FENCE
REPLACEMENTS*

*HOYT PARK
3902 REGENT STREET
MADISON, WI 53705*

Although every effort has been made in preparing these plans and checking them for accuracy, the contractor and subcontractors must check all details and dimensions of their trade and be responsible for the same.

ITEM	DATE
Drawn by: SCL	07-16-2013
Approved by:	XX-XX-XXXX

PUBLIC WORKS PROJECT #:
7150

SHEET TITLE:

*FENCE INVENTORY
101-150*

SHEET NUMBER:

L-8

Pole#	# trees >2in DBH	# trees >10in DBH	Notes	Fence Type	Height (ft)	Pole Type	Top Bar	Corner Bracing?	Ownership / Notes
151				ch lk		6 Square H	No		Parks
152				ch lk		6 Square H	No		Parks
153				ch lk		6 Square H	No		Parks
154				ch lk		6 Square H	No		Parks
155			155-156 has 2 horizontal brace bars	ch lk		6 Square H	No		Parks
156			End H-post	ch lk		6 Square H	No		Parks
157			Start round post	ch lk		6 Round	No		Parks
158				ch lk		6 Round	No		Parks
159				ch lk		6 Round	No		Parks
160			Bend 1/2way down stairs - 1in branch in fabric	ch lk		6 Round	No	No	Parks
161				ch lk		6 Round	No		Parks
162				ch lk		6 Round	No		Parks
163				ch lk		6 Round	No		Parks
164			End of chain link at bottom of stairs - wire mesh fence blocking path extends another 30ft NE	ch lk		6 Round	No	No	Parks
165			Start 6ft chain link fence going east. Poles are round poles welded to old 3.5 ft high H poles, total 6-6.5 ft high	ch lk		6 H+Round	No		Parks
166			Small branches grown in fabric	ch lk		6 H+Round	No		Parks
167			Small branches grown in fabric	ch lk		6 H+Round	No		Parks
168			Small branches grown in fabric	ch lk		6 H+Round	No		Parks
169			Small branches grown in fabric	ch lk		6 H+Round	No		Parks
170			Small branches grown in fabric	ch lk		6 H+Round	No		Parks
171			Small branches grown in fabric	ch lk		6 H+Round	No		Parks
172			Small branches grown in fabric	ch lk		6 H+Round	No		Parks
173			Small branches grown in fabric	ch lk		6 H+Round	No		Parks
174	1		3in Hackberry tree grown in fabric	ch lk		6 H+Round	No		Parks
175	1		2in bush grown in fabric	ch lk		6 H+Round	No		Parks
176				ch lk		6 H+Round	No		Parks
177				ch lk		6 H+Round	No		Parks
178	2		2in & 3in Hackberry trees grown in fabric. Fabric ripped	ch lk		6 H+Round	No		Parks
179			Fabric ripped, patched with wire mesh	ch lk		6 H+Round	No		Parks
180			Fabric ripped, patched with wire mesh	ch lk		6 H+Round	No		Parks
181	1		2in dead Black Locust tree grown in fabric	ch lk		6 H+Round	No		Parks
182				ch lk		6 H+Round	No		Parks
183				ch lk		6 H+Round	No		Parks
184				ch lk		6 H+Round	No		Parks
185				ch lk		6 H+Round	No		Parks
186	1		2in Hackberry tree on north side of fence (not fabric side of fence) - remove	ch lk		6 H+Round	No		Parks
187			187-188 metal gate over swale (no chain link)	ch lk		6 H+Round	No		Parks
188			187-188 metal gate over swale (no chain link)	ch lk		6 H+Round	No		Parks
189				ch lk		6 H+Round	No		Parks
190	2		1in & 2in Buckthorn trees grown in fence	ch lk		6 H+Round	No		Parks
191				ch lk		6 H+Round	No		Parks
192	1	1	16in Bur Oak tree 0.5ft south of fabric (fabric side of fence)	ch lk		6 H+Round	No		Parks
193				ch lk		6 H+Round	No		Parks
194	1		6in Elm tree at north side of fabric (not fabric side of fence)	ch lk		6 H+Round	No		Parks
195	2		1in & 2in dead Honeysuckle bushes (x3) grown in fence	ch lk		6 H+Round	No		Parks
196				ch lk		6 H+Round	No		Parks
197			1in bush grown in fence, top of fabric bent down	ch lk		6 H+Round	No		Parks
198				ch lk		6 H+Round	No		Parks
199			bend point	ch lk		6 H+Round	No	No	Parks
200				ch lk		6 H+Round	No		Parks

M:\Maps\parks\Hoyt\Hoyt_Park_Fence.dgn

City of Madison
Department of Public Works
PARKS DIVISION

City-County Building, Suite 104
210 Martin Luther King, Jr. Blvd.
PO Box 2987
Madison, WI 53701-2987

play
**MADISON
PARKS**

PROJECT:

*HOYT PARK
FENCE
REPLACEMENTS*

*HOYT PARK
3902 REGENT STREET
MADISON, WI 53705*

Although every effort has been made in preparing these plans and checking them for accuracy, the contractor and subcontractors must check all details and dimensions of their trade and be responsible for the same.

ITEM	DATE
Drawn by: SCL	07-16-2013
Approved by:	XX-XX-XXXX

PUBLIC WORKS PROJECT #:
7150

SHEET TITLE:

*FENCE INVENTORY
151-200*

SHEET NUMBER:

L-9

Pole#	# trees >2in DBH	# trees >10in DBH	Notes	Fence Type	Height (ft)	Pole Type	Top Bar	Corner Bracing?	Ownership / Notes
201				ch lk	6	H+Round	No		Parks
202				ch lk	6	H+Round	No		Parks
203	1		2in-3in branches fell on fence (fabric down)	ch lk	6	H+Round	No		Parks
204	1		2in-3in branches fell on fence (fabric down)	ch lk	6	H+Round	No		Parks
205	1		2in-3in branches fell on fence (fabric down)	ch lk	6	H+Round	No		Parks
206				ch lk	6	H+Round	No		Parks
207	1	1	24in Black Locust tree grown in south side of fabric (fabric side of fence)	ch lk	6	H+Round	No		Parks
208				ch lk	6	H+Round	No		Parks
209				ch lk	6	H+Round	No		Parks
210				ch lk	6	H+Round	No		Parks
211	1		6in branch fell on fabric (poles OK)	ch lk	6	H+Round	No		Parks
212	1	1	14in Black Locust tree 8in from fabric (on fabric side); Small vines in fabric	ch lk	6	H+Round	No		Parks
213	1	1	24in Black Locust tree 1 ft from fabric (on fabric side); Small vines in fabric	ch lk	6	H+Round	No		Parks
214			Small vines in fabric	ch lk	6	H+Round	No		Parks
215			Small vines in fabric	ch lk	6	H+Round	No		Parks
216			Small branches grown in fabric	ch lk	6	H+Round	No		Parks
217			Small branches grown in fabric	ch lk	6	H+Round	No	No	Parks
218			Small vines in fabric	ch lk	6	H+Round	No		Parks
219			Small vines in fabric	ch lk	6	H+Round	No		Parks
220			Small vines in fabric	ch lk	6	H+Round	No	No	Parks
221			Fabric bent down, nothing on it	ch lk	6	H+Round	No		Parks
222				ch lk	6	H+Round	No		Parks
223	1	1	24in Black Locust tree 8in from fabric (on fabric side)	ch lk	6	H+Round	No		Parks
224	1	1	16in Bur Oak tree 4in from fabric (north side - not fabric side)	ch lk	6	H+Round	No		Parks
225				ch lk	6	H+Round	No		Parks
226	1		small tree (<1in) grown in fabric	ch lk	6	H+Round	No		Parks
227	1		1in Hackberry tree grown in fabric	ch lk	6	H+Round	No		Parks
228			Fabric bent down, nothing on it	ch lk	6	H+Round	No		Parks
229				ch lk	6	H+Round	No		Parks
230				ch lk	6	H+Round	No		Parks
231	1		6in Bur Oak tree 1 ft from fabric (on fabric side)	ch lk	6	H+Round	No		Parks
232				ch lk	6	H+Round	No		Parks
233	1	1	16in dead tree 1.2 ft from fabric (on fabric side) - remove	ch lk	6	H+Round	No		Parks
234	1		2in Buckthorn tree grown in fabric	ch lk	6	H+Round	No		Parks
235				ch lk	6	H+Round	No		Parks
236	1	1	16in Bur Oak tree 1.5ft from fabric (on fabric side)	ch lk	6	H+Round	No		Parks
237			fabric reinforced with wire mesh	ch lk	6	H+Round	No		Parks
238			fabric reinforced with wire mesh	ch lk	6	H+Round	No		Parks
239				ch lk	6	H+Round	No		Parks
240	1		3in tree (inv.) 2in from fabric (north side - not fabric side)	ch lk	6	H+Round	No		Parks
241				ch lk	6	H+Round	No		Parks
242				ch lk	6	H+Round	No		Parks
243				ch lk	6	H+Round	No		Parks
244	1	1	12in Bur Oak tree 2ft from fabric (on fabric side)	ch lk	6	H+Round	No		Parks
245				ch lk	6	H+Round	No		Parks
246				ch lk	6	H+Round	No		Parks
247			Small branches grown in fabric	ch lk	6	H+Round	No		Parks
248			Small branches grown in fabric	ch lk	6	H+Round	No		Parks
249			Small branches grown in fabric	ch lk	6	H+Round	No		Parks
250				ch lk	6	H+Round	No		Parks

City of Madison
Department of Public Works
PARKS DIVISION
*City-County Building, Suite 104
210 Martin Luther King, Jr. Blvd.
PO Box 2987
Madison, WI 53701-2987*
play
**MADISON
PARKS**

PROJECT:

*HOYT PARK
FENCE
REPLACEMENTS*

*HOYT PARK
3902 REGENT STREET
MADISON, WI 53705*

Although every effort has been made in preparing these plans and checking them for accuracy, the contractor and subcontractors must check all details and dimensions of their trade and be responsible for the same.

ITEM	DATE
Drawn by: SCL	07-16-2013
Approved by:	xx-xx-xxxx

PUBLIC WORKS PROJECT #:

7150

SHEET TITLE:

*FENCE INVENTORY
201-250*

SHEET NUMBER:

L-10

Pole#	# trees >2in DBH	# trees >10in DBH	Notes	Fence Type	Height (ft)	Pole Type	Top Bar	Corner Bracing?	Ownership / Notes
251				ch lk	6	H+Round	No		Parks
252				ch lk	6	H+Round	No		Parks
253			Opening for stairs	ch lk	6	H+Round	No	No	Parks
254			Opening for stairs	ch lk	6	H+Round	No	No	Parks
255				ch lk	6	H+Round	No		Parks
256	1	1	14in Bur Oak tree 6in north of fence (not on fabric side)	ch lk	6	H+Round	No		Parks
257				ch lk	6	H+Round	No	No	Parks
258				ch lk	6	H+Round	No		Parks
259			Small branches grown in fabric	ch lk	6	H+Round	No		Parks
260			Small branches grown in fabric	ch lk	6	H+Round	No		Parks
261			Small branches grown in fabric	ch lk	6	H+Round	No		Parks
262			Small branches grown in fabric	ch lk	6	H+Round	No		Parks
263	1		5in Boxelder tree on fabric - base on north side (not fabric side), leans south over fence bending fabric.	ch lk	6	H+Round	No	No	Parks
264				ch lk	6	H+Round	No		Parks
265	1		1in tree (inv.) grown in fabric	ch lk	6	H+Round	No	No	Parks
266				ch lk	6	H+Round	No		Parks
267				ch lk	6	H+Round	No		Parks
268				ch lk	6	H+Round	No		Parks
269				ch lk	6	H+Round	No		Parks
270				ch lk	6	H+Round	No		Parks
271				ch lk	6	H+Round	No		Parks
272			Small branches grown in fabric	ch lk	6	H+Round	No	No	Parks
273			Small branches grown in fabric	ch lk	6	H+Round	No		Parks
274			Small branches grown in fabric	ch lk	6	H+Round	No		Parks
275			Small branches grown in fabric	ch lk	6	H+Round	No		Parks
276			Small branches grown in fabric	ch lk	6	H+Round	No	No	Parks
277			Small branches grown in fabric	ch lk	6	H+Round	No		Parks
278				ch lk	6	H+Round	No		Parks
279	1		6in dead branch (inv.) fell on fabric - bent down	ch lk	6	H+Round	No		Parks
280				ch lk	6	H+Round	No		Parks
281			pole offset 1ft north of fence line	ch lk	6	H+Round	No		Parks
282				ch lk	6	H+Round	No	No	Parks
283	1		2in tree & small branches (inv.) grown in fabric	ch lk	6	H+Round	No		Parks
284	1	1	12in Bur Oak tree 6in NE of fabric (not on fabric side)	ch lk	6	H+Round	No		Parks
285	1		2in tree (inv.) grown in fabric	ch lk	6	H+Round	No		Parks
286	1		1in tree (inv.) grown in fabric	ch lk	6	H+Round	No		Parks
287			pole next to main NW gate pole; wire mesh between 287 & 288	ch lk & wire mesh	6	H+Round	No		Parks
288			gate post 2-7/8in OD; gate fabric 6ft high x 9ft wide	ch lk & wire mesh	6	Round	No	No	Parks
289			gate post 2-7/8in OD; gate fabric 6ft high x 9ft wide	ch lk	6	Round	Yes	No	Parks
290			Regular posts #290+ are 2-3/8in OD	ch lk	6	Round	Yes		Parks
291				ch lk	6	Round	Yes		Parks
292				ch lk	6	Round	Yes		Parks
293			Corner post 2-7/8in OD	ch lk	6	Round	Yes	No	Parks
294			Small branches grown in fabric	ch lk	6	Round	Yes		Parks
295			Small branches grown in fabric	ch lk	6	Round	Yes		Parks
296			Corner post 2-7/8in OD	ch lk	6	Round	Yes	No	Parks
297			Small branches grown in fabric	ch lk	6	Round	Yes		Parks
298			Small branches grown in fabric	ch lk	6	Round	Yes		Parks
299			Small branches grown in fabric	ch lk	6	Round	Yes		Parks
300	1		6in Ash tree 1.5ft west of fabric (on fabric side)	ch lk	6	Round	Yes		Parks

City of Madison
Department of Public Works
PARKS DIVISION
*City-County Building, Suite 104
210 Martin Luther King, Jr. Blvd.
PO Box 2987
Madison, WI 53701-2987*

play
**MADISON
PARKS**

PROJECT:

*HOYT PARK
FENCE
REPLACEMENTS*

*HOYT PARK
3902 REGENT STREET
MADISON, WI 53705*

Although every effort has been made in preparing these plans and checking them for accuracy, the contractor and subcontractors must check all details and dimensions of their trade and be responsible for the same.

ITEM	DATE
Drawn by: SCL	07-16-2013
Approved by:	xx-xx-xxxx

PUBLIC WORKS PROJECT #:

7150

SHEET TITLE:

*FENCE INVENTORY
251-300*

SHEET NUMBER:

L-11

Pole#	# trees >2in DBH	# trees >10in DBH	Notes	Fence Type	Height (ft)	Pole Type	Top Bar	Corner Bracing?	Ownership / Notes
301				ch lk	6	Round	Yes		Parks
302				ch lk	6	Round	Yes		Parks
303				ch lk	6	Round	Yes		Parks
304				ch lk	6	Round	Yes		Parks
305			Corner post 2-7/8in OD. Fence between #305-307 down to 5ft high	ch lk	6	Round	Yes		Parks
306				ch lk	5	Round	Yes		Parks
307			Corner post 2-7/8in OD. Fence between #305-307 down to 5ft high	ch lk	6	Round	Yes		Parks
308				ch lk	6	Round	Yes		Parks
309			Corner post 2-7/8in OD, No top bar #309-332	ch lk	6	Round	Yes	Yes	Parks
310				ch lk	6	Round	No		Parks
311				ch lk	6	Round	No		Parks
312	1		3in Bur Oak tree 6in NE of post (not on fabric side)	ch lk	6	Round	No		Parks
313				ch lk	6	Round	No		Parks
314			Post bent toward fabric	ch lk	6	Round	No		Parks
315	1		Dead downed tree trunk 6in NE of fabric (not on fabric side)	ch lk	6	Round	No		Parks
316			Transition from 6ft to 5.5ft high fence	ch lk	5.5	Round	No		Parks
317			Transition from 6ft to 5.5ft high fence	ch lk	5.5	Round	No		Parks
318			5.5ft high post 2-7/8in OD	ch lk	5.5	Round	No	Yes	Parks
319				ch lk	5.5	Round	No		Parks
320	4		multiple 2in - 4in Buckthorn & Mulberry trees 1ft from fabric (on fabric side)	ch lk	5.5	Round	No		Parks
321	4		multiple 2in - 4in Buckthorn & Mulberry trees 1ft from fabric (on fabric side)	ch lk	5.5	Round	No		Parks
322	1	1	18in dead Oak tree north of fence - remove	ch lk	5.5	Round	No		Parks
323	1		1in tree (inv.) grown in fabric	ch lk	5.5	Round	No		Parks
324			fabric peeled down, top wire broken	ch lk	5.5	Round	No		Parks
325			fabric patched with wire mesh	ch lk	5.5	Round	No		Parks
326				ch lk	5.5	Round	No		Parks
327				ch lk	5.5	Round	No		Parks
328			Post bent north	ch lk	5.5	Round	No		Parks
329	1		2in bush (inv.) on fabric, fabric down	ch lk	5.5	Round	No		Parks
330			post bent NE	ch lk	5.5	Round	No		Parks
331			Fabric bent down, nothing on it	ch lk	5.5	Round	No		Parks
332			Corner post 2-7/8in OD; end 5.5ft high fence, start 8ft high with top bar	ch lk	8	Round	Yes	Yes	Parks
333			Top bar bent & separated	ch lk	8	Round	Yes		Parks
334			Top bar bent & separated; fabric bent down	ch lk	8	Round	Yes		Parks
335			Top bar bent & separated, part missing; fabric bent down	ch lk	8	Round	Yes		Parks
336				ch lk	8	Round	Yes		Parks
337				ch lk	8	Round	Yes		Parks
338				ch lk	8	Round	Yes		Parks
339			Corner post 2-7/8in OD	ch lk	8	Round	Yes	Yes	Parks
340				ch lk	8	Round	Yes		MMSD (in Parks access easement Doc 4100078)
341	1	1	12in Boxelder tree 6in north of fence (not on fabric side); remove	ch lk	8	Round	Yes		MMSD (in Parks access easement Doc 4100078)
342				ch lk	8	Round	Yes	Yes	MMSD (in Parks access easement Doc 4100078)
343			Corner post 2-7/8in OD; No top bar #343-344	ch lk	8	Round	Yes	Yes	MMSD (in Parks access easement Doc 4100078)
344			No top bar #343-344; #344-345 is opening for path (gate separate from fence)	ch lk	8	Round	No	Yes	MMSD (in Parks access easement Doc 4100078)
345			Top bar #345-#384	ch lk	8	Round	Yes	Yes	MMSD (in Parks access easement Doc 4100078)
346	1	1	15in Elm tree grown into post & fabric	ch lk	8	Round	Yes	Yes	MMSD (in Parks access easement Doc 4100078)
347			dead branches (inv.) grown into fabric	ch lk	8	Round	Yes		MMSD (in Parks access easement Doc 4100078)
348			Small branches (inv.) grown in fabric	ch lk	8	Round	Yes		MMSD (in Parks access easement Doc 4100078)
349	1	1	15in Boxelder tree 2ft north of fence (not on fabric side). Corner post 2-7/8in OD	ch lk	8	Round	Yes	Yes	MMSD (in Parks access easement Doc 4100078)
350			Small branches grown in fabric	ch lk	8	Round	Yes		MMSD (in Parks access easement Doc 4100078)

City of Madison
Department of Public Works
PARKS DIVISION

City-County Building, Suite 104
210 Martin Luther King, Jr. Blvd.
PO Box 2987
Madison, WI 53701-2987

play
**MADISON
PARKS**

PROJECT:

*HOYT PARK
FENCE
REPLACEMENTS*

*HOYT PARK
3902 REGENT STREET
MADISON, WI 53705*

Although every effort has been made in preparing these plans and checking them for accuracy, the contractor and subcontractors must check all details and dimensions of their trade and be responsible for the same.

ITEM	DATE
Drawn by: SCL	07-16-2013
Approved by:	xx-xx-xxxx

PUBLIC WORKS PROJECT #:
7150

SHEET TITLE:

*FENCE INVENTORY
301-350*

SHEET NUMBER:

L-12