

Madison, Wisconsin

INDEX OF SHEETS

SHEET NO.	1	TITLE
SHEET NO.	DI-D2	TYPICAL SECTIONS & DETAILS
SHEET NO.	P1	STREETS PLAN & PROFILE
SHEET NO.	UI	UTILITIES PLAN & PROFILE
SHEET NO.	WI	WATER MAIN PLAN & PROFILE
SHEET NO.	W2	WATER MAIN - ESTIMATE OF MATERIALS
SHEET NO.	XI-X2	STREET CROSS SECTIONS

CITY OF MADISON

CITY ENGINEERING DIVISION

DEPARTMENT OF PUBLIC WORKS

PLAN OF PROPOSED IMPROVEMENT

HIGH STREET RECONSTRUCTION

ASSESSMENT DISTRICT - 2014

CITY PROJECT NO. 53WI727
CONTRACT NO. 7230

CONVENTIONAL SIGNS	
FIELD VERIFY ALL UTILITY LOCATIONS	
GAS	— G —
STORM SEWER	— ST —
SANITARY SEWER	— SAN —
WATER	— W —
BURIED ELECTRIC	— E —
OVERHEAD ELECTRIC	— OH —
POWER POLE	□
ADA COMPLIANT RAMP W/ DETECTABLE WARNING FIELD	▣
COMBUSTIBLE FLUIDS	☀

CONSTRUCTION PROJECT LOCATION

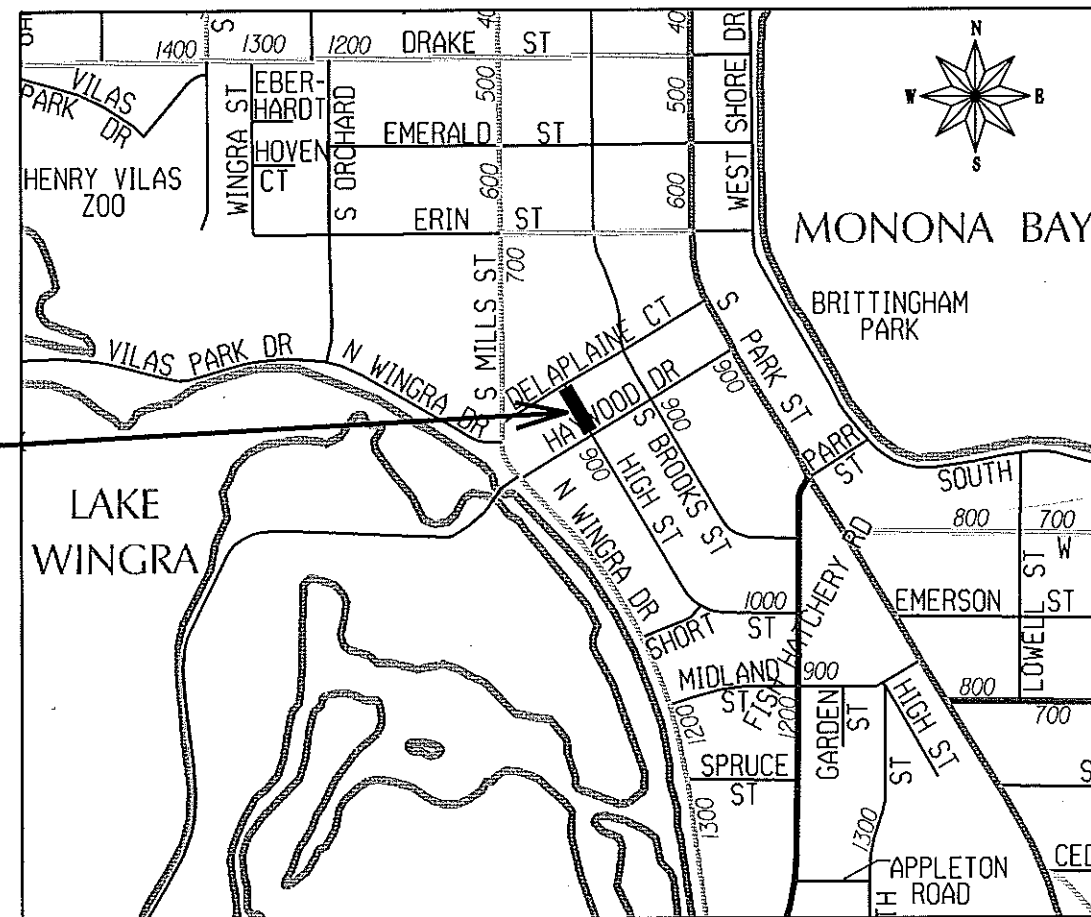
NOTES:

ALL GUTTERS SHALL DRAIN WITH A MINIMUM GRADE OF 0.50% TOWARD STORM SEWER INLETS.

SIDEWALK RAMPS AND CURB THRU SIDEWALK RAMPS SHALL HAVE A MAXIMUM SLOPE OF 1" PER 12". SIDEWALK AND CURB RAMPS SHALL BE CONSTRUCTED WITH A SIDE SLOPE OF 2.00%. SIDEWALK SHALL HAVE A MINIMUM LONGITUDINAL SLOPE OF 0.50% AND A MAXIMUM LONGITUDINAL SLOPE OF 5.00% EXCEPT WHERE STREET GRADES EXCEED 5.00%.

EARTH WORK SUMMARY:

EXCAVATION CUT (MEASURED PLAN QUANTITY)	317 C.Y.
ESTIMATED UNDISTRIBUTED UNDERCUT	100 C.Y.
TOTAL UNCLASSIFIED EXCAVATION CUT	417 C.Y.



PUBLIC IMPROVEMENT PROJECT APPROVED

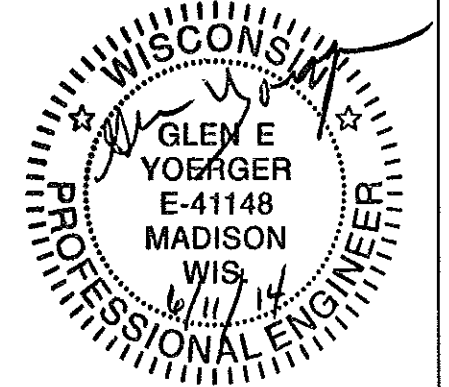
JUNE 17, 2014

BY THE COMMON COUNCIL OF MADISON, WISCONSIN

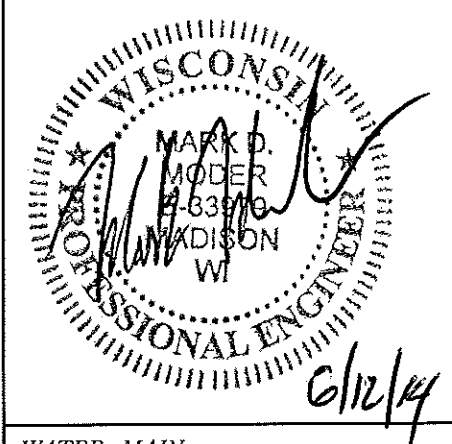
PUBLIC IMPROVEMENT DESIGN APPROVED BY:

[Signature] 6/13/14
City Engineer Date

STREET DESIGNED BY:



SANITARY SEWER DESIGNED BY:



WATER MAIN DESIGNED BY:

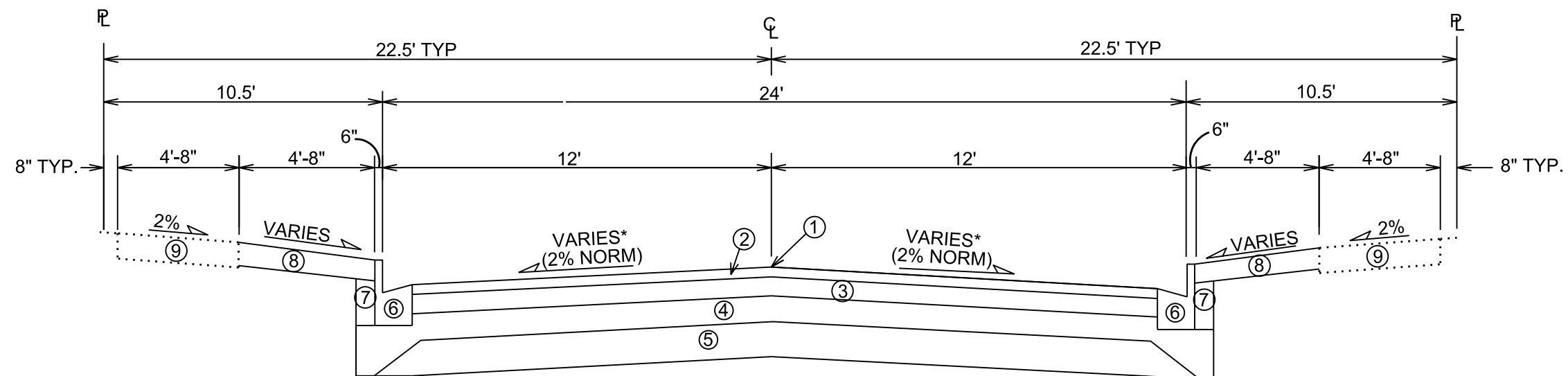


PLOT SCALE:

PLOT NAME:

REV. DATE:

ORIGINATOR: CITY OF MADISON, STREETS DIVISION



TYPICAL FINISHED SECTION
HIGH STREET
STA 10+75 to STA 12+75

- ① POINT REFERRED TO ON PROFILE
- ② 1 3/4" BITUMINOUS UPPER LAYER, TYPE E-0.3
- ③ 1 3/4" BITUMINOUS LOWER LAYER, TYPE E-0.3
- ④ 4" GRADATION 2 CRUSHED STONE
- ⑤ 6" GRADATION 1 CRUSHED STONE
- ⑥ TYPE 'A' OR 'X' CONCRETE CURB & GUTTER
- ⑦ FILL, INCIDENTAL
- ⑧ 4" TOPSOIL, SEED & MAT
- ⑨ 5" CONCRETE SIDEWALK, REPLACE AS NOTED IN PLAN

* SEE CROSS SECTION SHEETS FOR CROSS SLOPES AND TOP OF CURB ELEVATIONS.

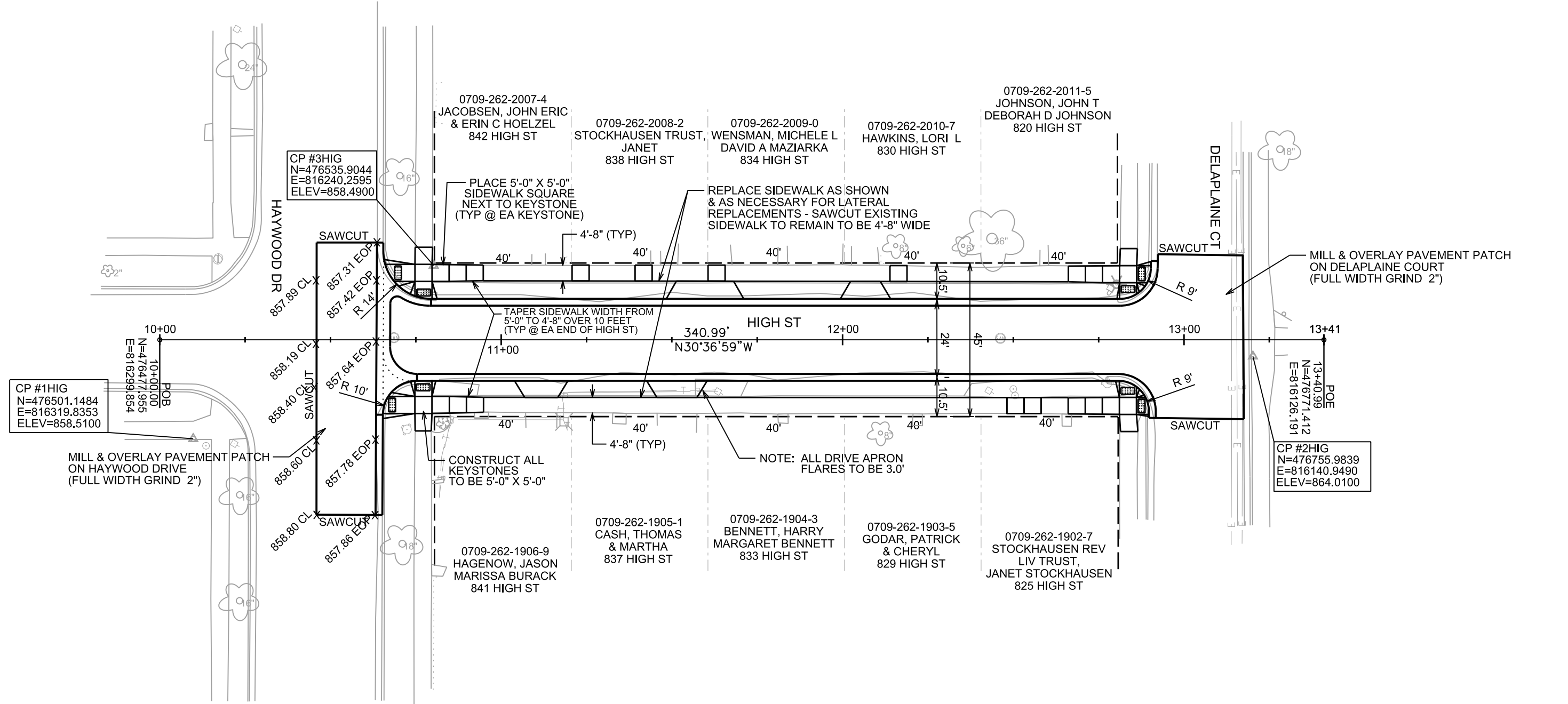
TYPICAL SECTIONS NOT TO SCALE

PLOT SCALE: _____

PLOT NAME: _____

REV. DATE: _____

ORIGINATOR: CITY OF MADISON, STREETS DIVISION

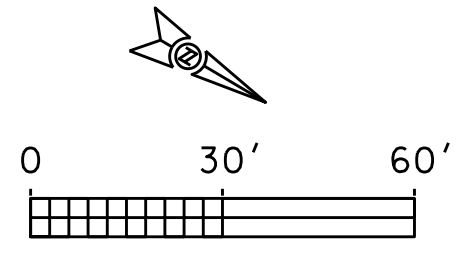


PLOT SCALE: _____
 PLOT NAME: _____
 REV. DATE: _____

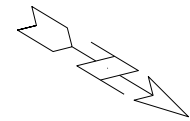
CP #1HIG
 N=476501.1484
 E=816319.8353
 ELEV=858.5100

CP #3HIG
 N=476535.9044
 E=816240.2595
 ELEV=858.4900

CP #2HIG
 N=476755.9839
 E=816140.9490
 ELEV=864.0100



ORIGINATOR: CITY OF MADISON, STREETS DIVISION

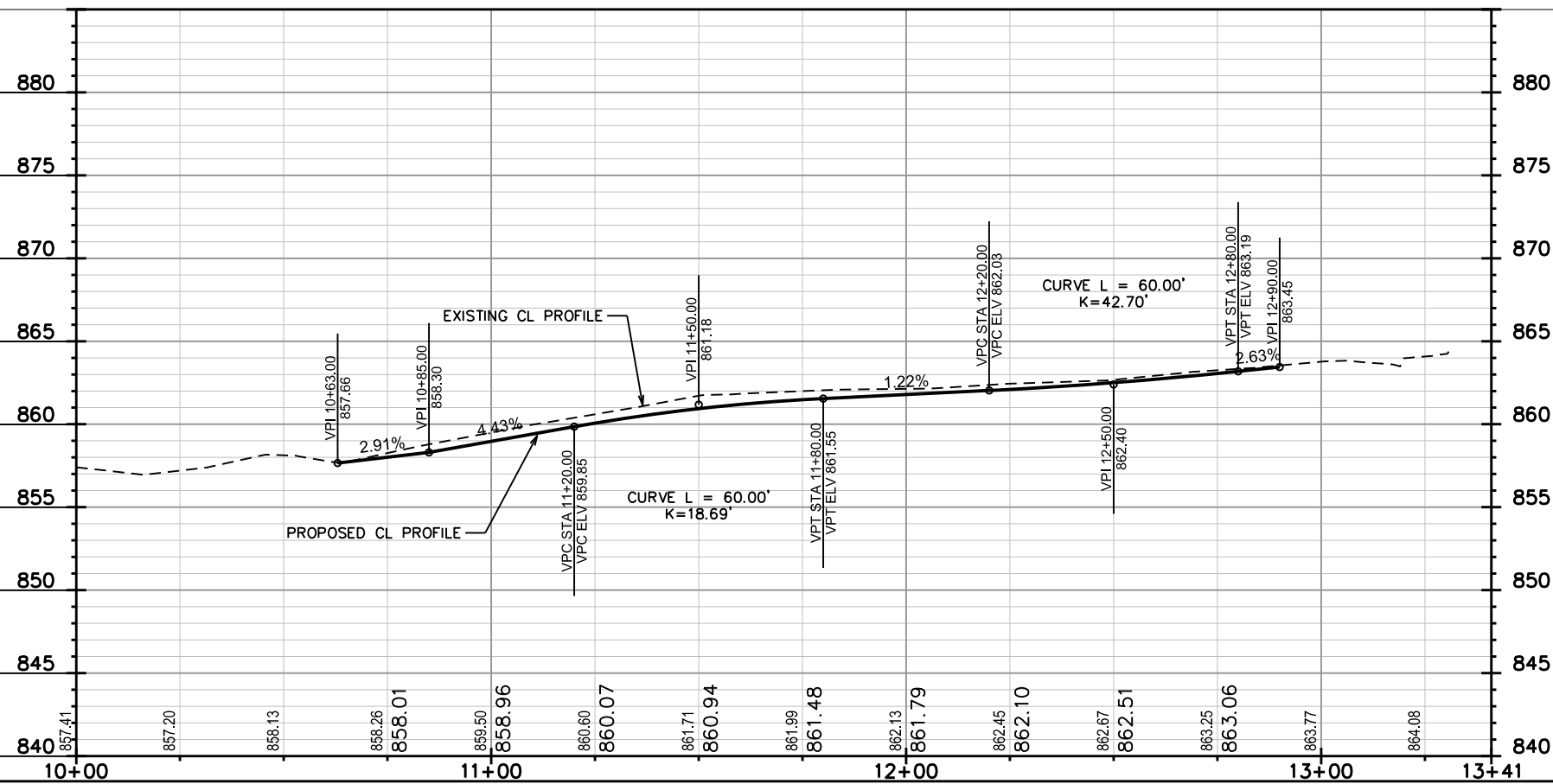
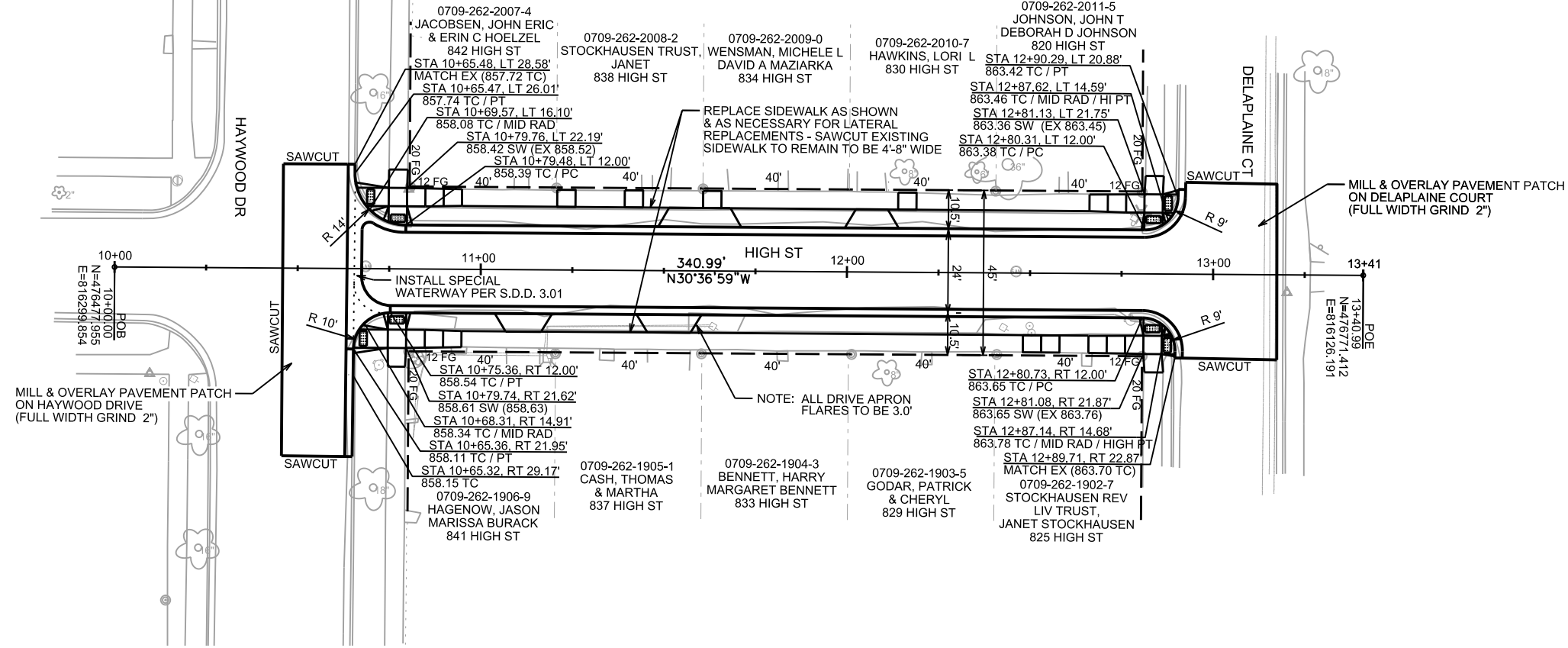


PLOT SCALE: _____

PLOT NAME: _____

REV. DATE: _____

ORIGINATOR: CITY OF MADISON, STREETS DIVISION



SANITARY SEWER SCHEDULE

PROPOSED SANITARY STRUCTURES

SAS NO.	STATION	LOCATION (OFFSET)	TOP OF CASTING	EI	DEPTH	NOTES
SAS #1	10+68.60	CL	857.87	852.66	5.21	-
SAS #2	12+48.60	CL	862.37	853.42	8.95	-

PROPOSED SANITARY PIPES

FROM (DNSTM)	TO (UPSTM)	DWNSTRM EI	UPSTRM EI	PLAN (PAY) LGTH (FT)	SLOPE (%)	PIPE SIZE	PVC TYPE	NOTES
SA S #1	SA S #2	852.70	853.42	180	0.40%	8"	SDR-35	-

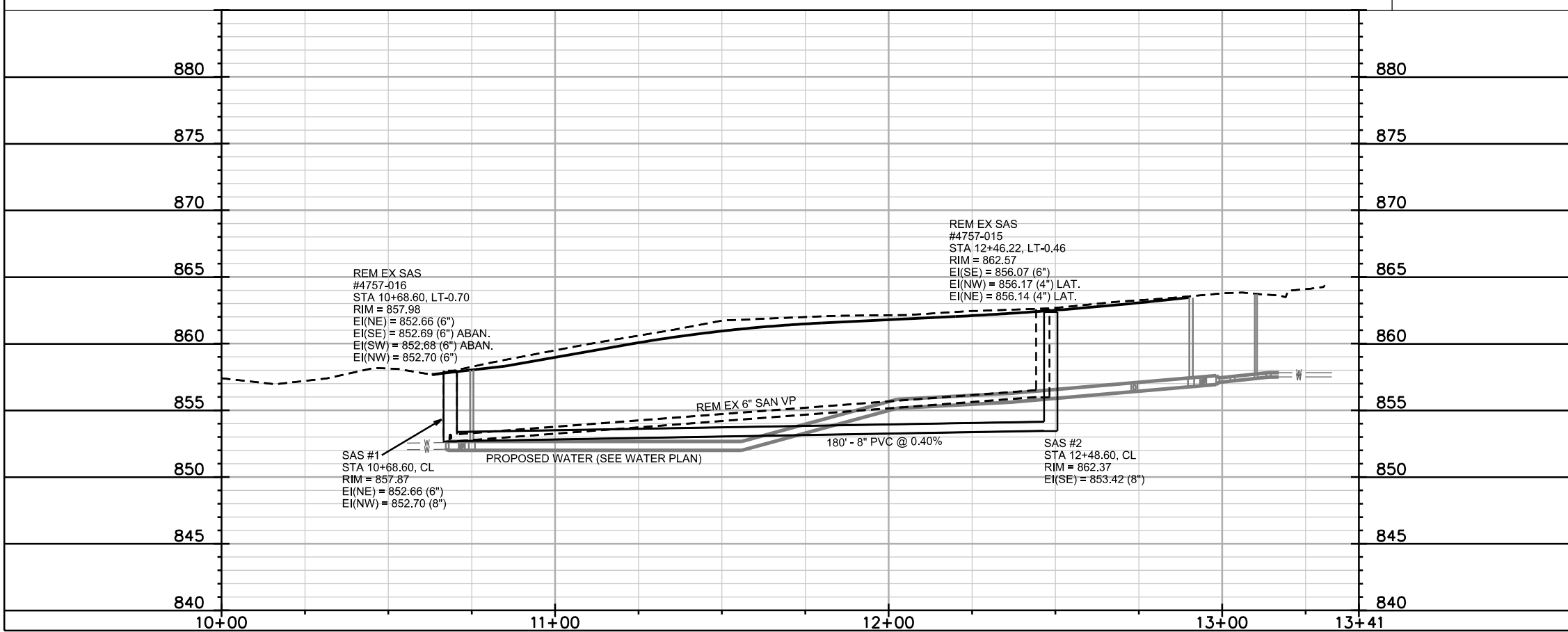
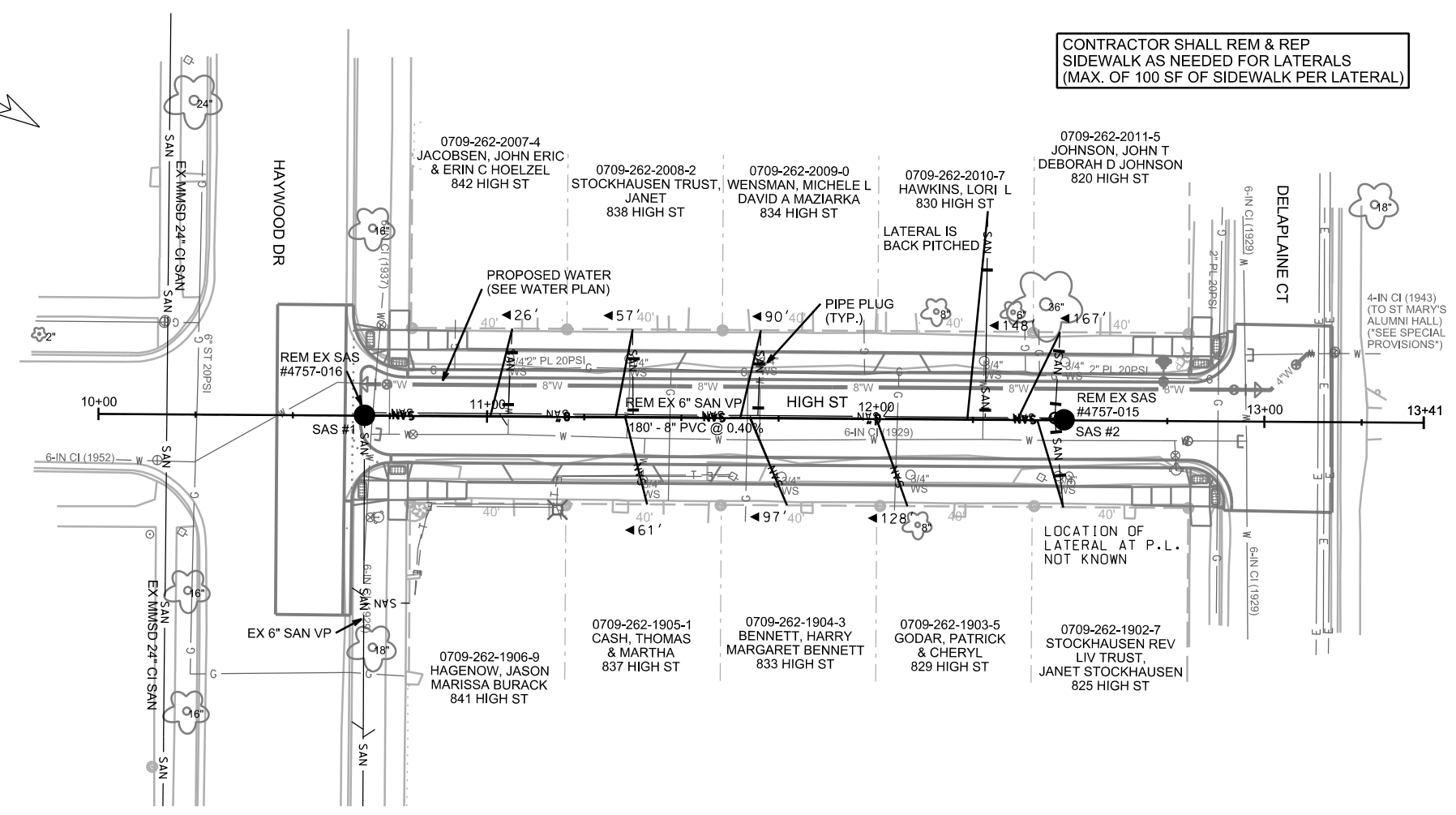
SANITARY STRUCTURE REMOVALS

STRUCTURE ID NO.	STATION	LOCATION (OFFSET)	TOP OF CASTING	EI	DEPTH	NOTES
4757-016	10+68.60	LT-0.70	857.98	852.66	5.32	-
4757-015	12+46.22	LT-0.46	862.57	856.07	6.50	-

SANITARY PIPE REMOVALS

REMOVE FROM	REMOVE TO	LGTH (FT)	PIPE TYPE	PIPE SIZE	PAID (Y/N)	NOTES
EX SAS 4757-016	EX SAS 4757-015	178	6"	6"	N	-

CONTRACTOR SHALL REM & REP
SIDEWALK AS NEEDED FOR LATERALS
(MAX. OF 100 SF OF SIDEWALK PER LATERAL)



PLOT SCALE: _____
PLOT NAME: _____
REV. DATE: _____
ORIGINATOR: CITY OF MADISON, STREETS DIVISION

CONSTRUCTION NOTES:

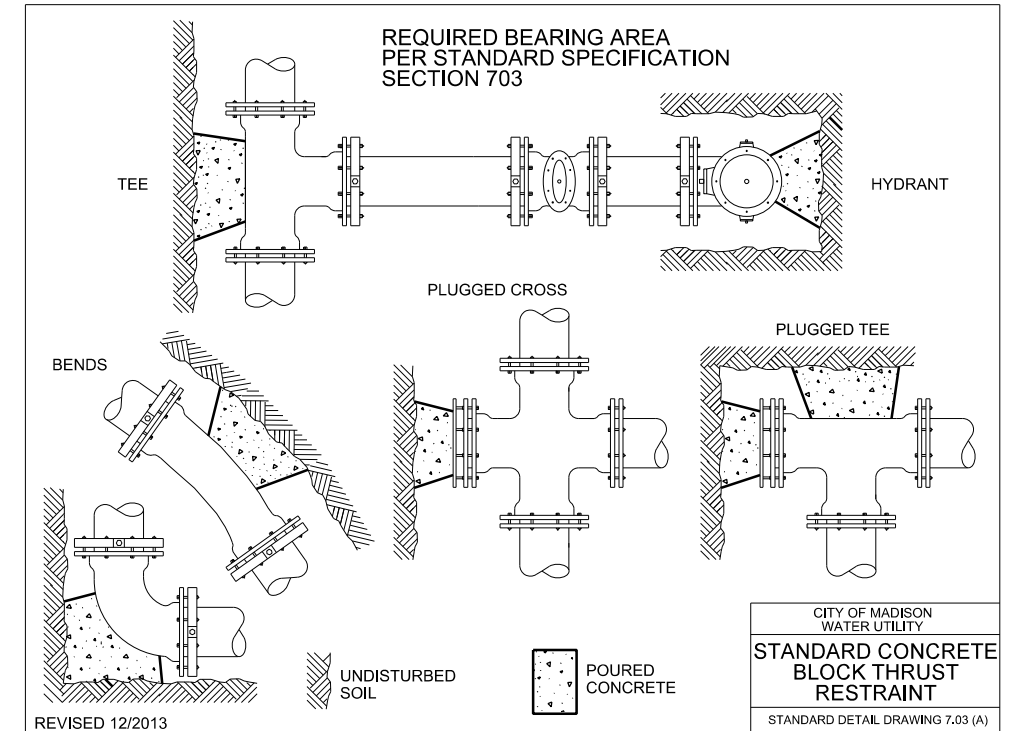
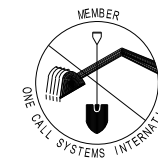
1. CONSTRUCT NEW WATER MAIN 6.0' BELOW FINISHED GRADE, UNLESS OTHERWISE NOTED. INSULATE MAIN WITH POLYSTYRENE BOARD AT UTILITY CROSSINGS OR OTHER AREAS IDENTIFIED BY ENGINEER AS HAVING INADEQUATE COVER.
2. VERIFY SIZE OF EXISTING WATER SERVICES AND RECONNECT SERVICES AS INDICATED.
3. MINIMIZE DISTRUPTION OF SERVICE TO EXISTING CUSTOMERS. NOTIFY PER CONTRACT REQUIREMENTS OF ANY PLANNED WATER OUTAGE.
4. EXISTING WATER MAIN SHALL REMAIN IN SERVICE UNTIL NEW WATER MAIN IS TESTED AND ACCEPTED BY MADISON WATER UTILITY AND ALL SERVICES ARE RECONNECTED.
5. THE EXISTING UTILITIES SHOWN ON THIS PLAN REPRESENT THE BEST INFORMATION AVAILABLE TO THE WATER UTILITY AT THE TIME OF PLAN PREPARATION. CONTRACTOR IS RESPONSIBLE FOR HAVING EACH UTILITY LOCATED PRIOR TO COMMENCING WORK.

- WN1 REPLACE THE EXISTING LEAD SERVICE WITH A NEW COPPER SERVICE.
- WN2 EXTEND AND RECONNECT THE EXISTING COPPER SERVICE TO THE NEW WATER MAIN.
- WN3 EXISTING SERVICE TO BE ABANDONED WHEN THE WATER MAIN IS CUT OFF.
- WN4 DISCONNECT FROM THE OLD WATER MAIN AND RECONNECT THE EXISTING COPPER WATER SERVICE LATERAL TO THE NEW WATER MAIN.
- WN5 RELOCATE THE EXISTING FIRE HYDRANT.
- WN6 ABANDON WATER VALVE ACCESS STRUCTURE.
- WN7 FURNISH AND INSTALL THE NEW TOP SECTION FOR THE WATER ACCESS STRUCTURE.
- WN8 ABANDON THE VALVE BOX.
- WN9 FURNISH THE DITCH, COMPACTION, AND ALL MATERIALS AND LABOR FOR THE INSTALLATION OF NEW SERVICE LATERAL.
- WN10 REMOVE AND SALVAGE EXISTING HYDRANT
- WN11 REPLACE THE EXISTING COPPER SERVICE WITH A COPPER SERVICE

TO OBTAIN LOCATION OF PARTICIPANTS' UNDERGROUND FACILITIES BEFORE YOU DIG IN WISCONSIN

CALL DIGGERS HOTLINE
TOLL FREE
811 OR 1-800-242-8511
FAX-A-LOCATE 1-800-338-3860
TDD (FOR HEARING IMPAIRED) 1-800-542-2289

WIS. STATUTE 182.0175 (1974)
REQUIRES MIN. OF 3 WORK DAYS
NOTICE BEFORE YOU EXCAVATE.



ESTIMATE OF MATERIALS SUPPLIED BY CONTRACTOR:

* ESTIMATE OF MATERIALS IS FOR INFORMATION ONLY. ENGINEER DOES NOT GUARANTEE ACCURACY OF MATERIAL TAKE-OFF.

20-FT - 4-IN PIPE
10-FT - 6-IN PIPE
235-FT - 8-IN PIPE

300-FT - POLYWRAP
STYROFOAM INSULATION, AS NEEDED

1 - 4-IN VALVE & BOX
1 - 6-IN VALVE & BOX
2 - 8-IN VALVES & BOXES
BOX EXTENSIONS AS REQ'D
(EXTENSIONS ARE INCIDENTAL)

1 - 5-IN HYDRANT ASSEMBLY
HYDRANT EXTENSIONS AS REQ'D
(EXTENSIONS ARE INCIDENTAL)

1 - 4-IN MJ CAP
2 - 6-IN MJ CAPS

1 - 8-IN X 4-IN REDUCER
1 - 8-IN X 6-IN REDUCER

1 - 8-IN X 6-IN TEE

2 - 8-IN X 6-IN CROSSES

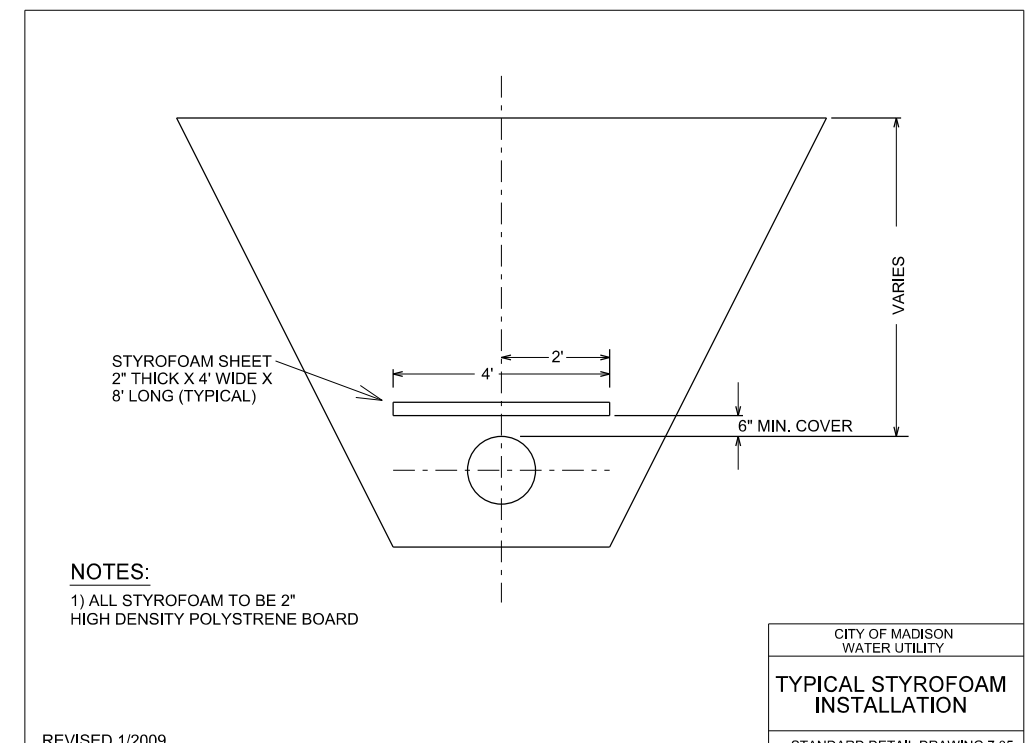
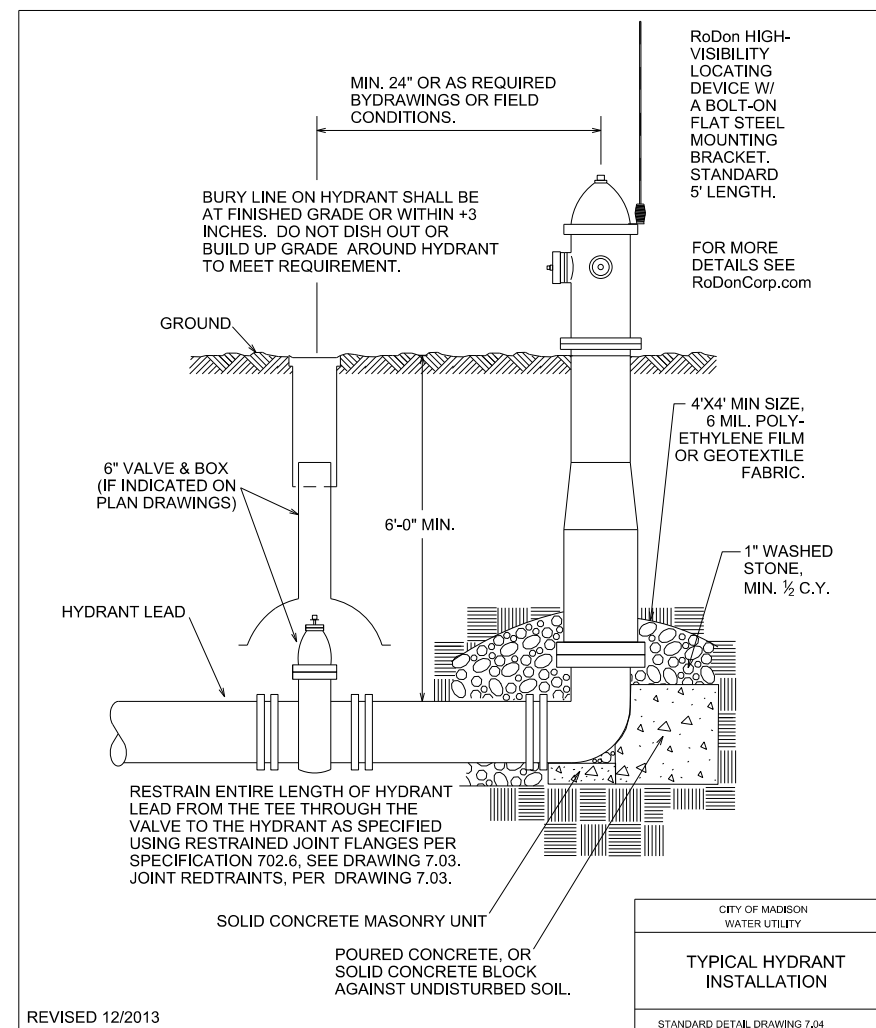
2 - 4-IN 45° BENDS

MATERIALS SUPPLIED BY CITY:

NONE

REUSED MATERIALS

NONE



CROSS SECTIONS

HIGH STREET

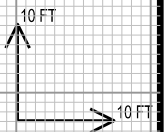
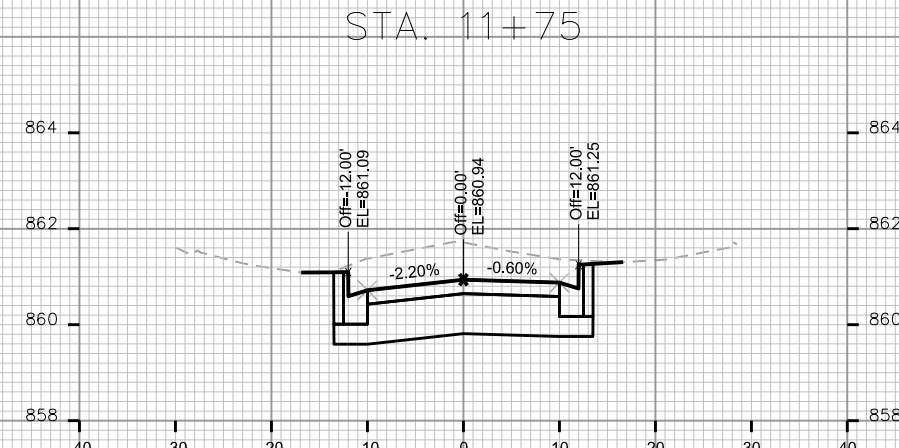
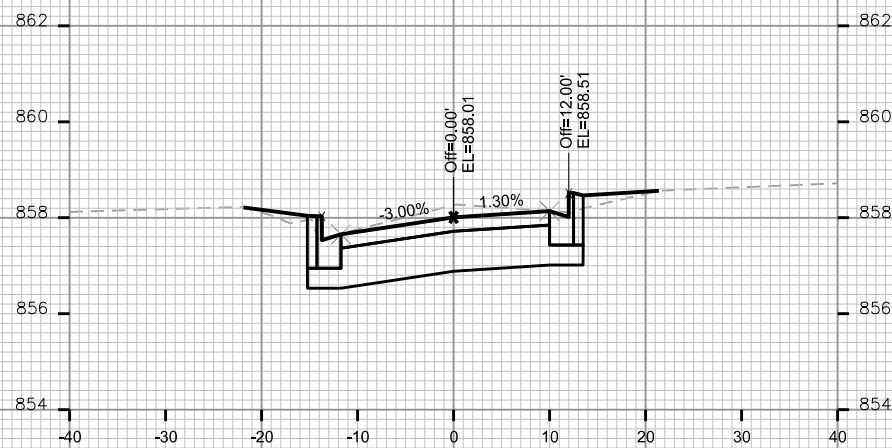
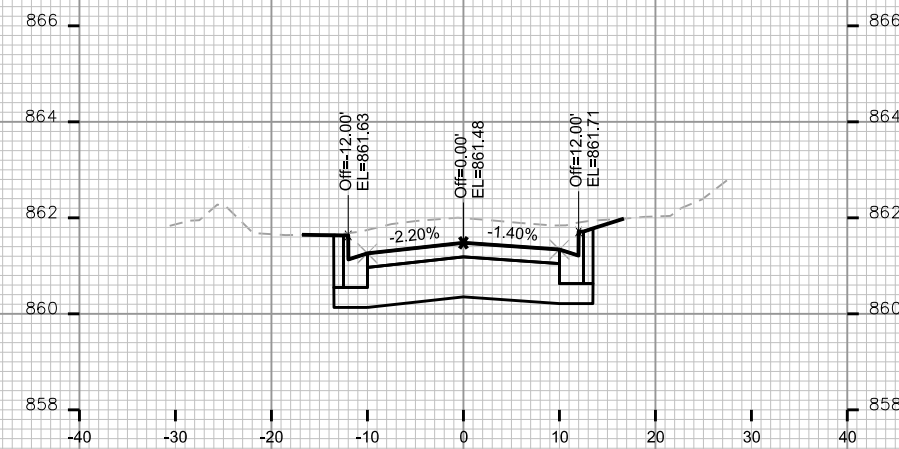
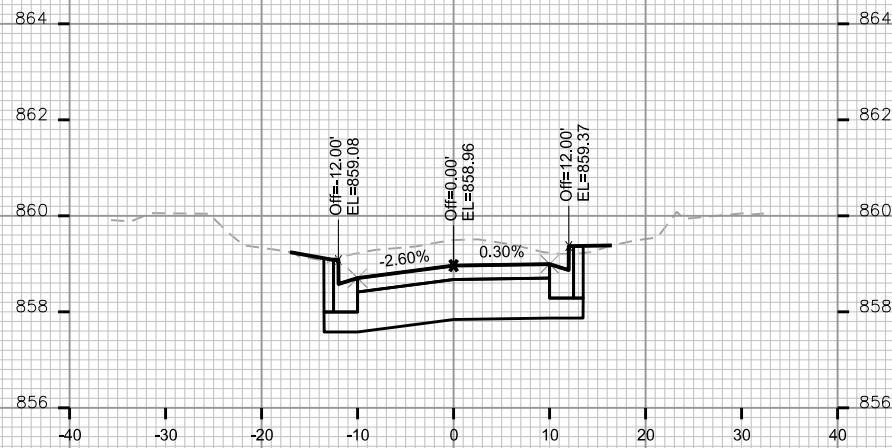
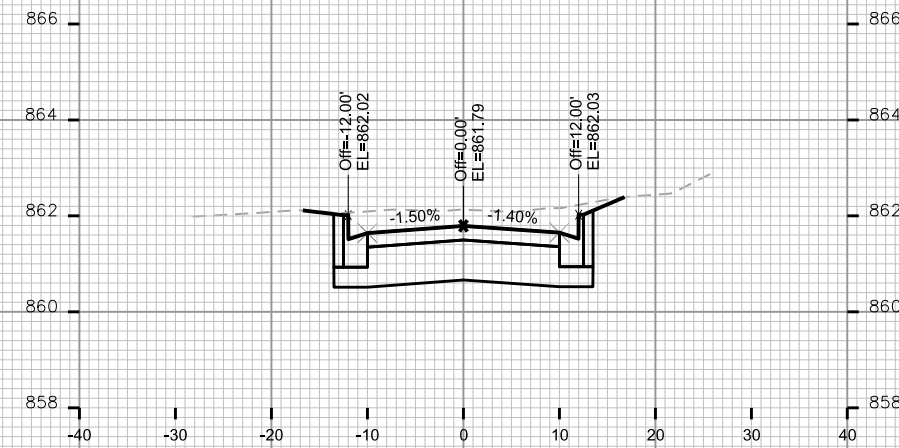
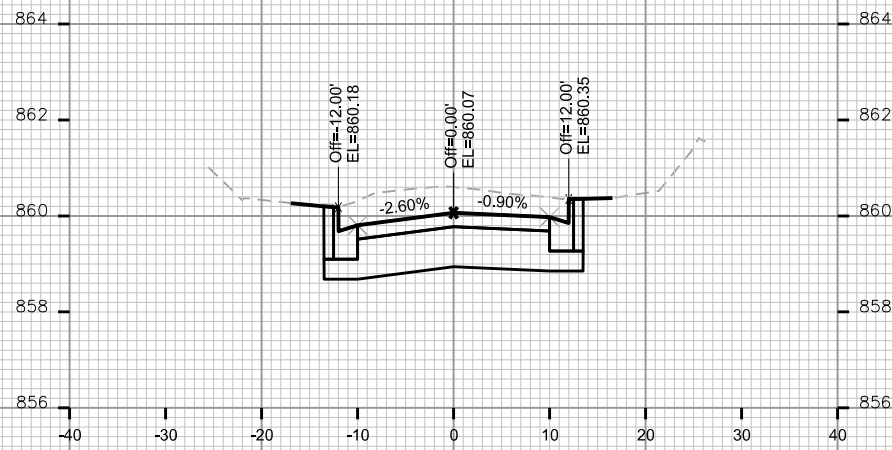
CITY OF MADISON

PLOT SCALE: _____

PLOT NAME: _____

REV. DATE: _____

ORIGINATOR: CITY OF MADISON, STREETS DIVISION



CROSS SECTIONS

HIGH STREET

CITY OF MADISON

PLOT SCALE: _____

PLOT NAME: _____

REV. DATE: _____

ORIGINATOR: CITY OF MADISON, STREETS DIVISION

