

Madison, Wisconsin

CITY OF MADISON

CITY ENGINEERING DIVISION

DEPARTMENT OF PUBLIC WORKS

PLAN OF PROPOSED IMPROVEMENT

PUBLIC IMPROVEMENT PROJECT
APPROVED

AUGUST 5, 2014

BY THE COMMON COUNCIL
OF MADISON, WISCONSIN

PUBLIC IMPROVEMENT DESIGN
APPROVED BY:

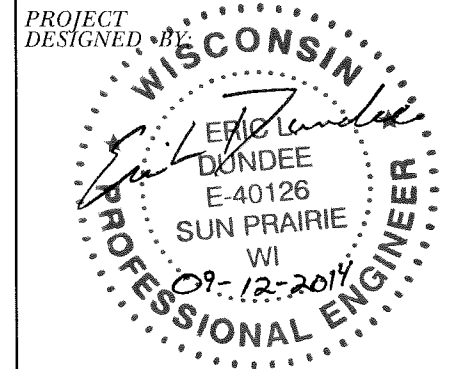
 9/12/14
City Engineer Date



INDEX OF SHEETS

SHEET NO.	TITLE
1	UTILITIES AND ACCESS ROAD
2	STORM ALIGNMENT
3	EROSION CONTROL PLAN
4	DETAILS
5-8	STORM SCHEDULE
9	

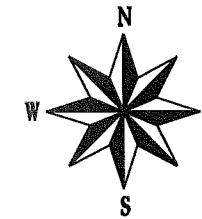
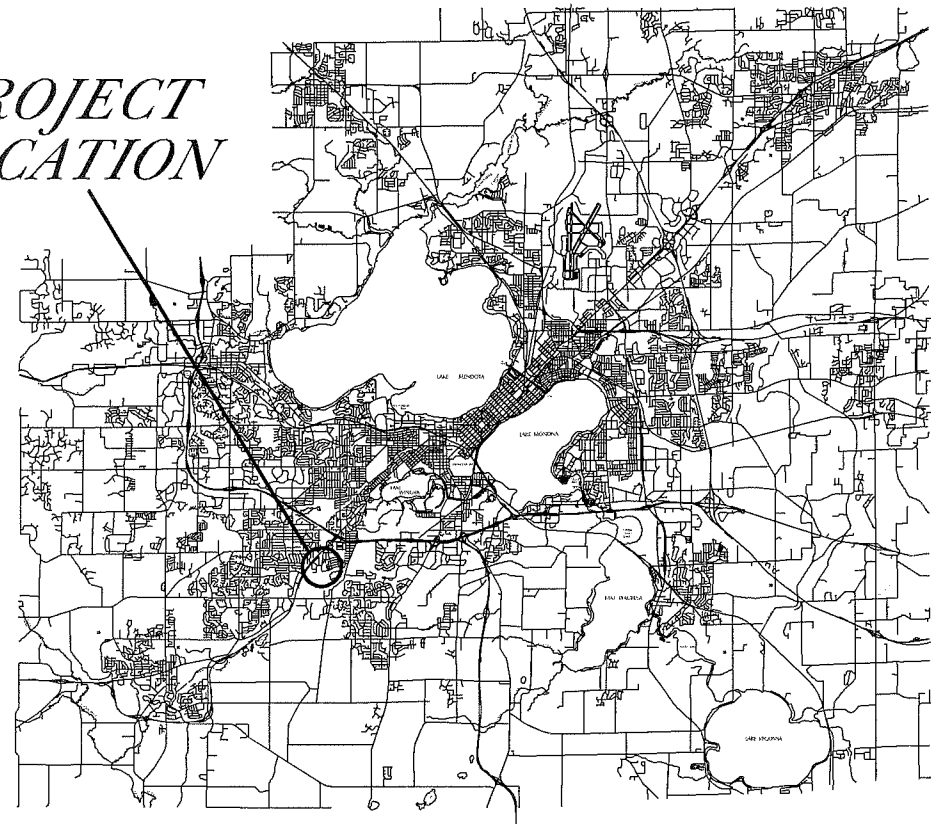
DUNNS MARSH TREATMENT STRUCTURE

CITY PROJECT NO. 53W1617
CONTRACT NO. 7327



CONVENTIONAL SIGNS	
FIELD VERIFY ALL UTILITY LOCATIONS	
GAS	— G —
STORM SEWER	— ST —
SANITARY SEWER	— SAN —
WATER	— W —
OVERHEAD ELECTRIC	— OH —
POWER POLE	□
HANDICAP RAMP	
COMBUSTIBLE FLUIDS	

PROJECT LOCATION



PLANNED EARTHWORK QUANTITIES
EXCAVATION CUT (MEASURED PLAN QUANTITY).....230 CY
ESTIMATED UNDISTRIBUTED UNDERCUT.....20 CY
TOTAL UNCLASSIFIED EXCAVATION CUT.....250 CY

PLOT SCALE: _____

PLOT NAME: _____

REV. DATE: _____

ORIGINATOR: CITY OF MADISON, STREETS DIVISION

PLAN
UTILITIES AND ACCESS ROAD CITY OF MADISON

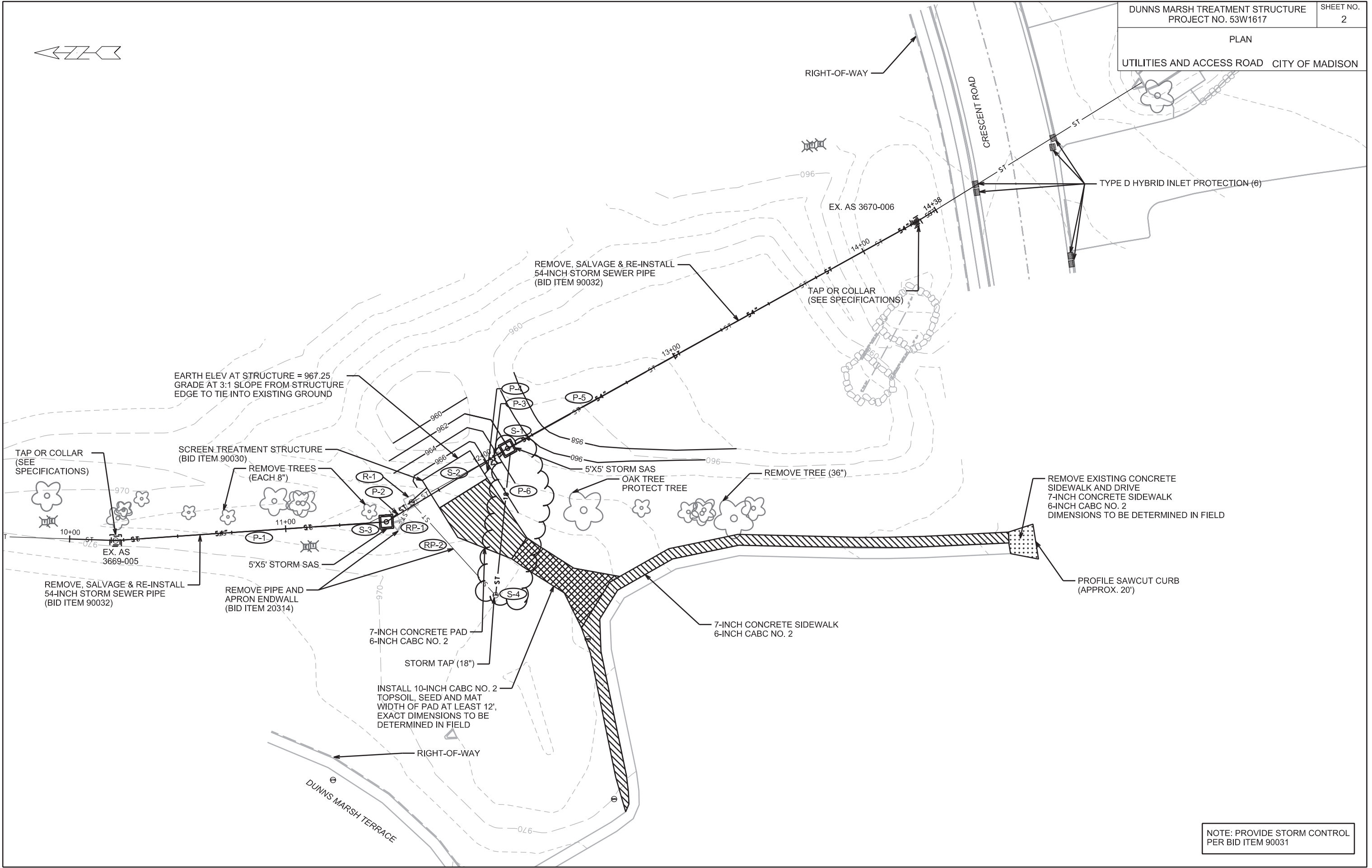


PLOT SCALE: _____

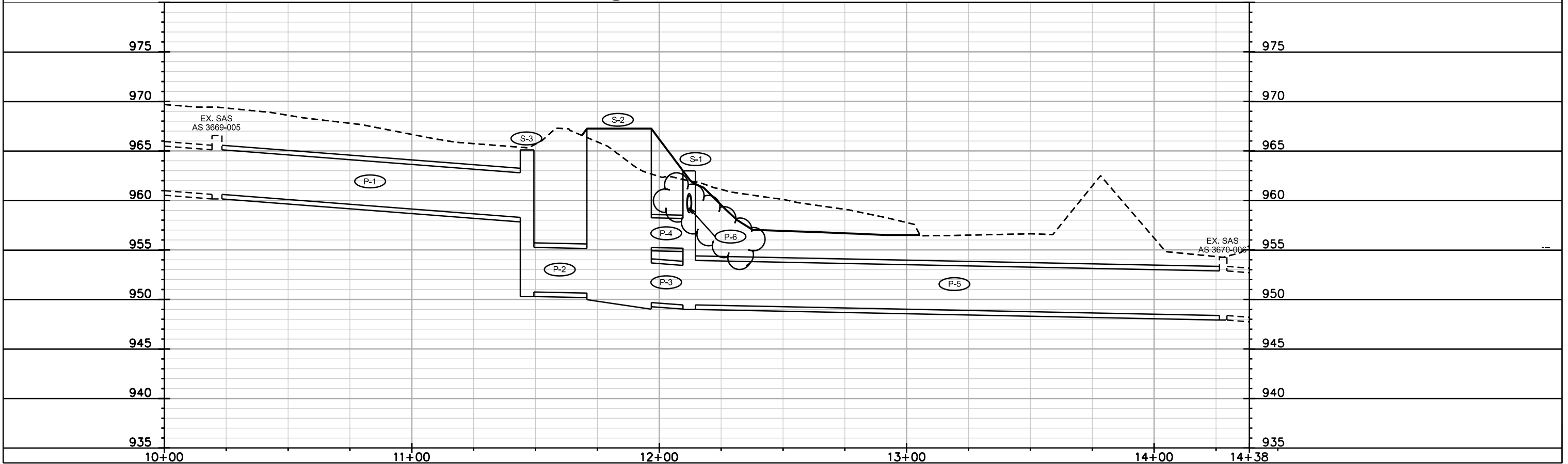
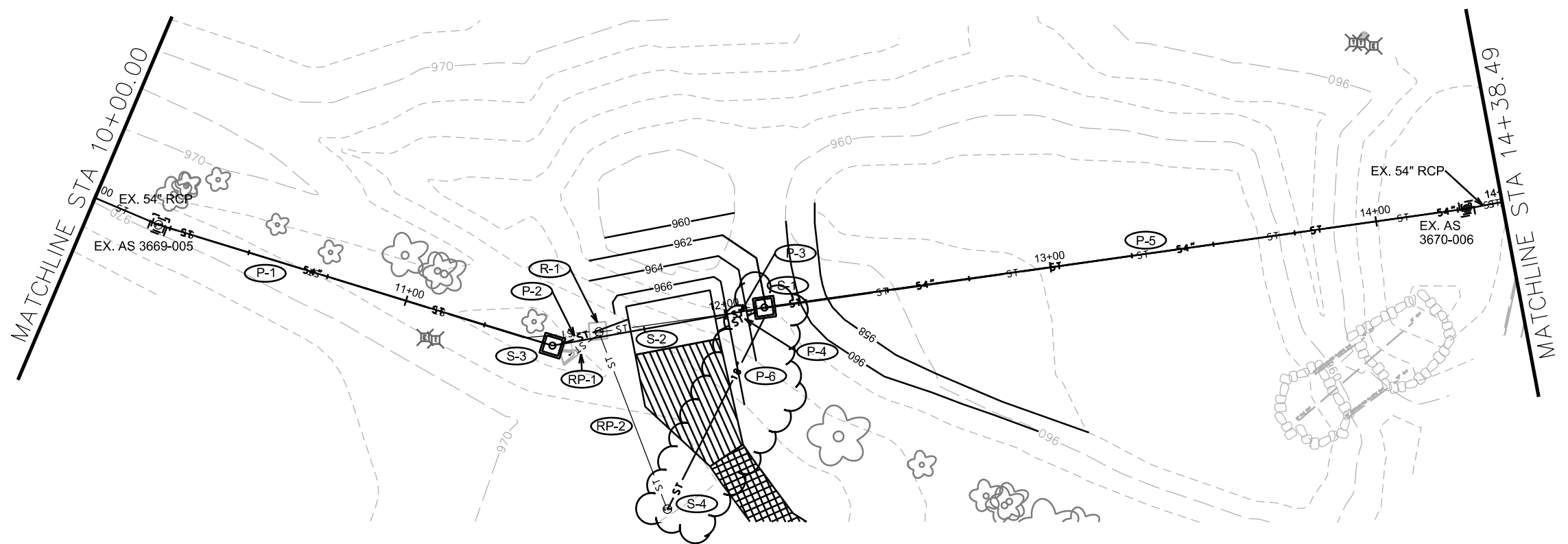
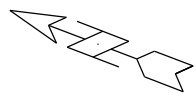
PLOT NAME: _____

REV. DATE: _____

ORIGINATOR: CITY OF MADISON, STREETS DIVISION



NOTE: PROVIDE STORM CONTROL PER BID ITEM 90031



PLOT SCALE: _____

PLOT NAME: _____

REV. DATE: _____

ORIGINATOR: CITY OF MADISON, STREETS DIVISION

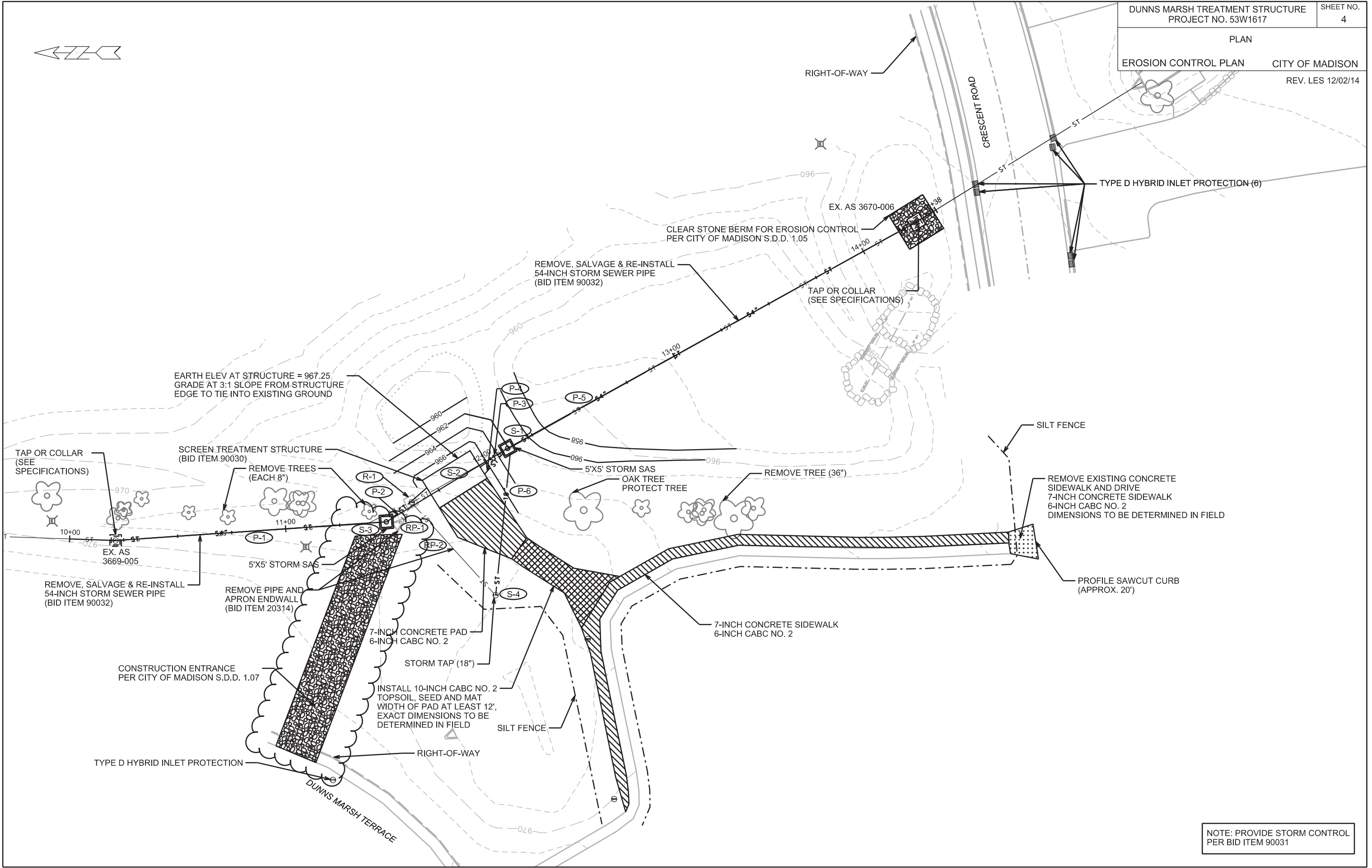


PLOT SCALE: _____

PLOT NAME: _____

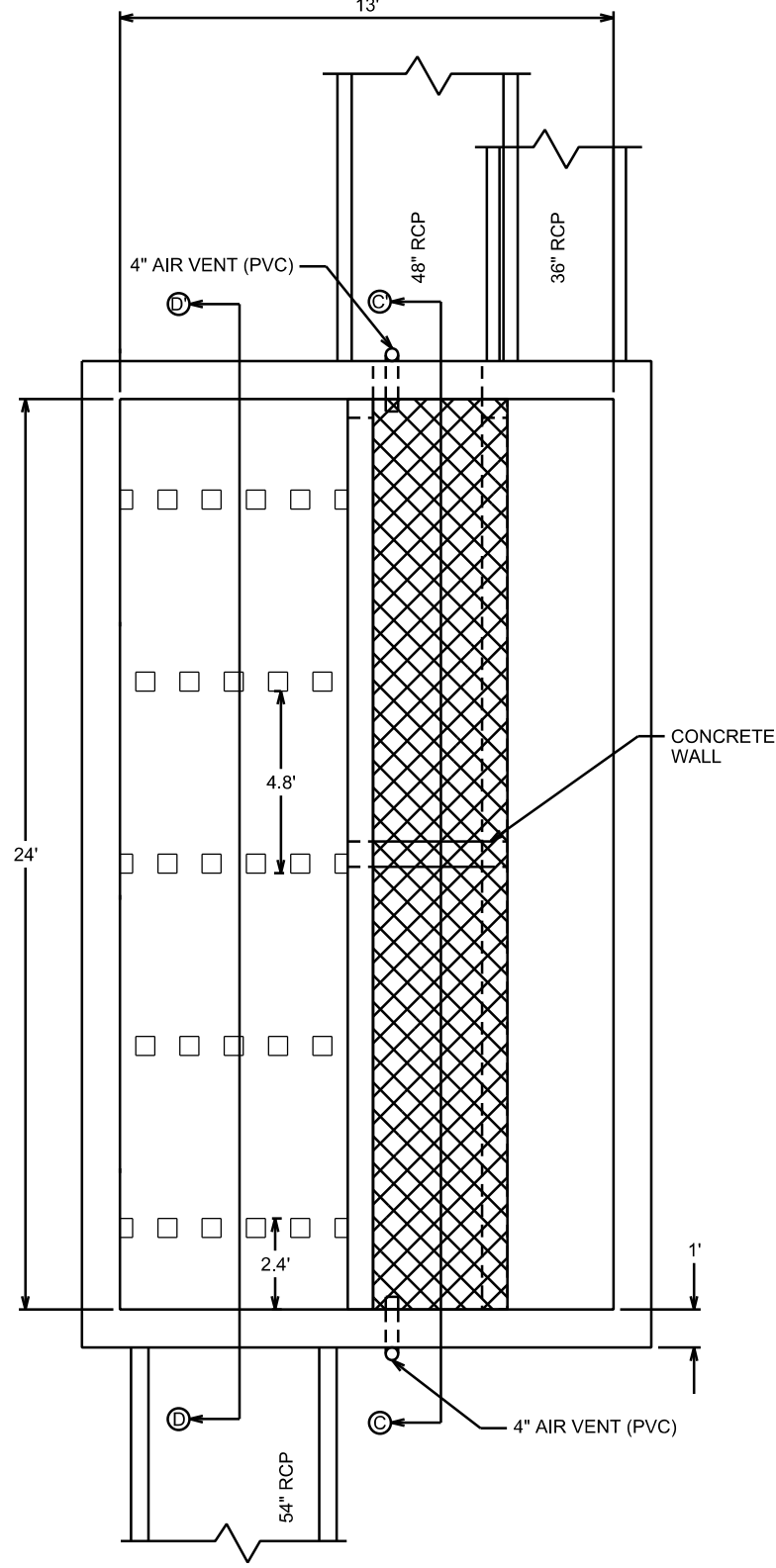
REV. DATE: _____

ORIGINATOR: CITY OF MADISON, STREETS DIVISION



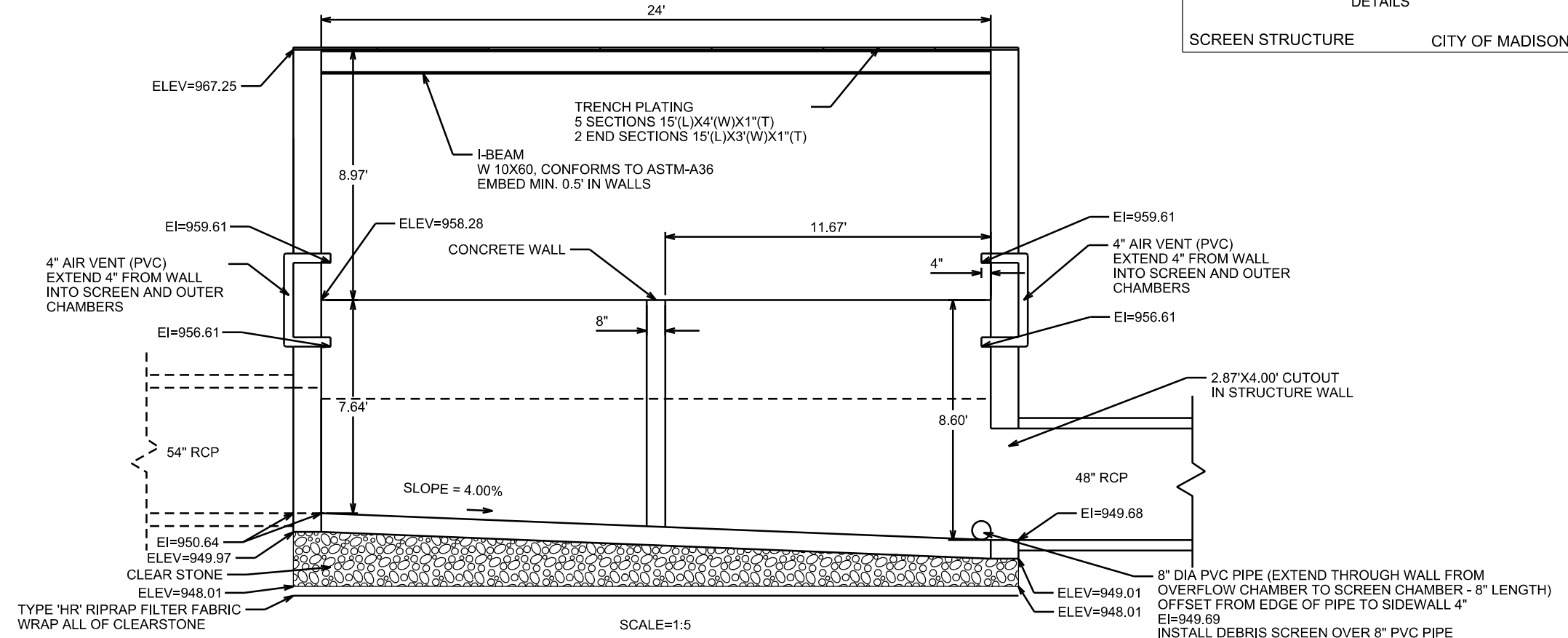
NOTE: PROVIDE STORM CONTROL PER BID ITEM 90031

PLAN VIEW



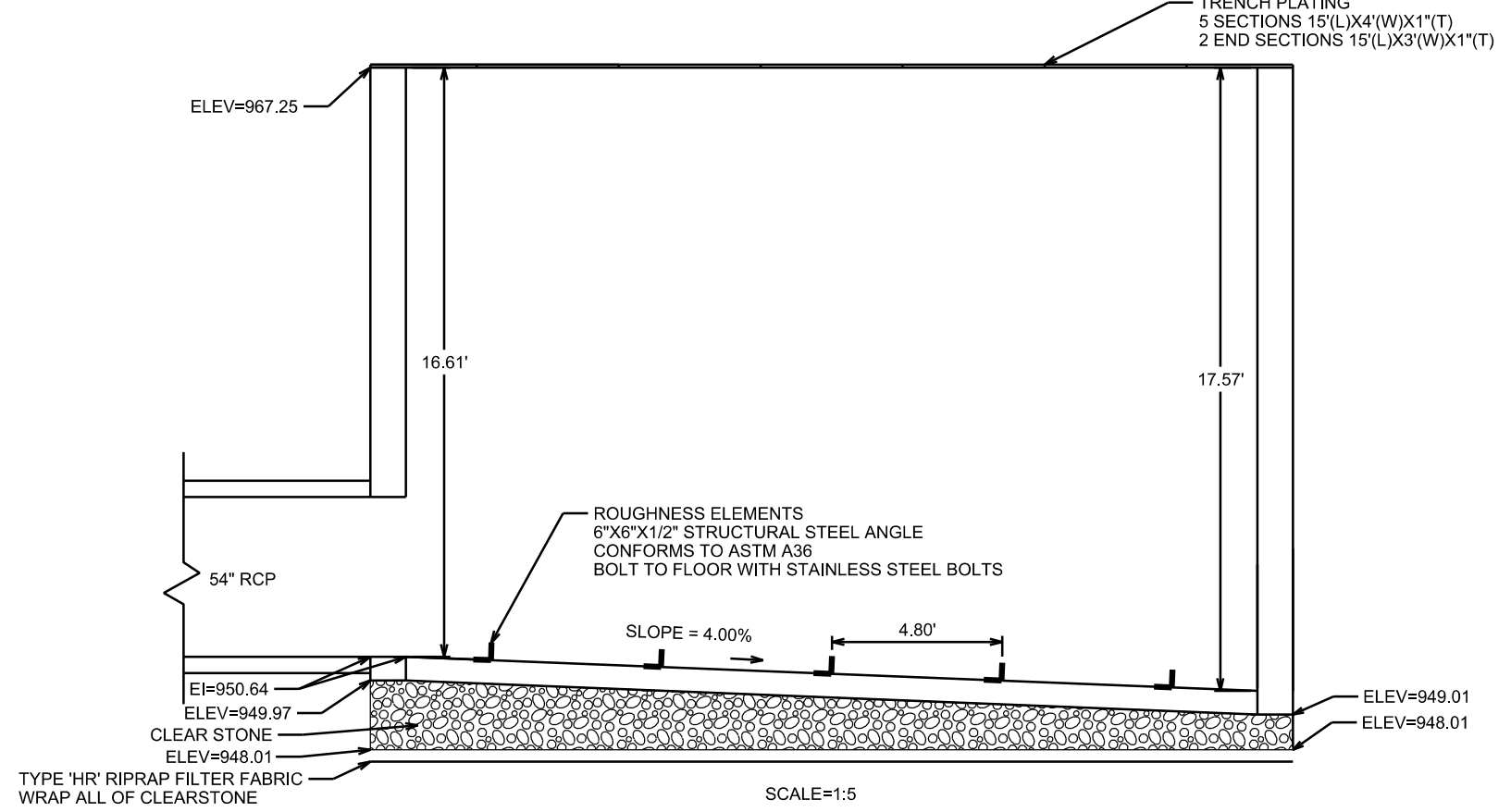
SCALE=1:5

SECTION C-C'



SCALE=1:5

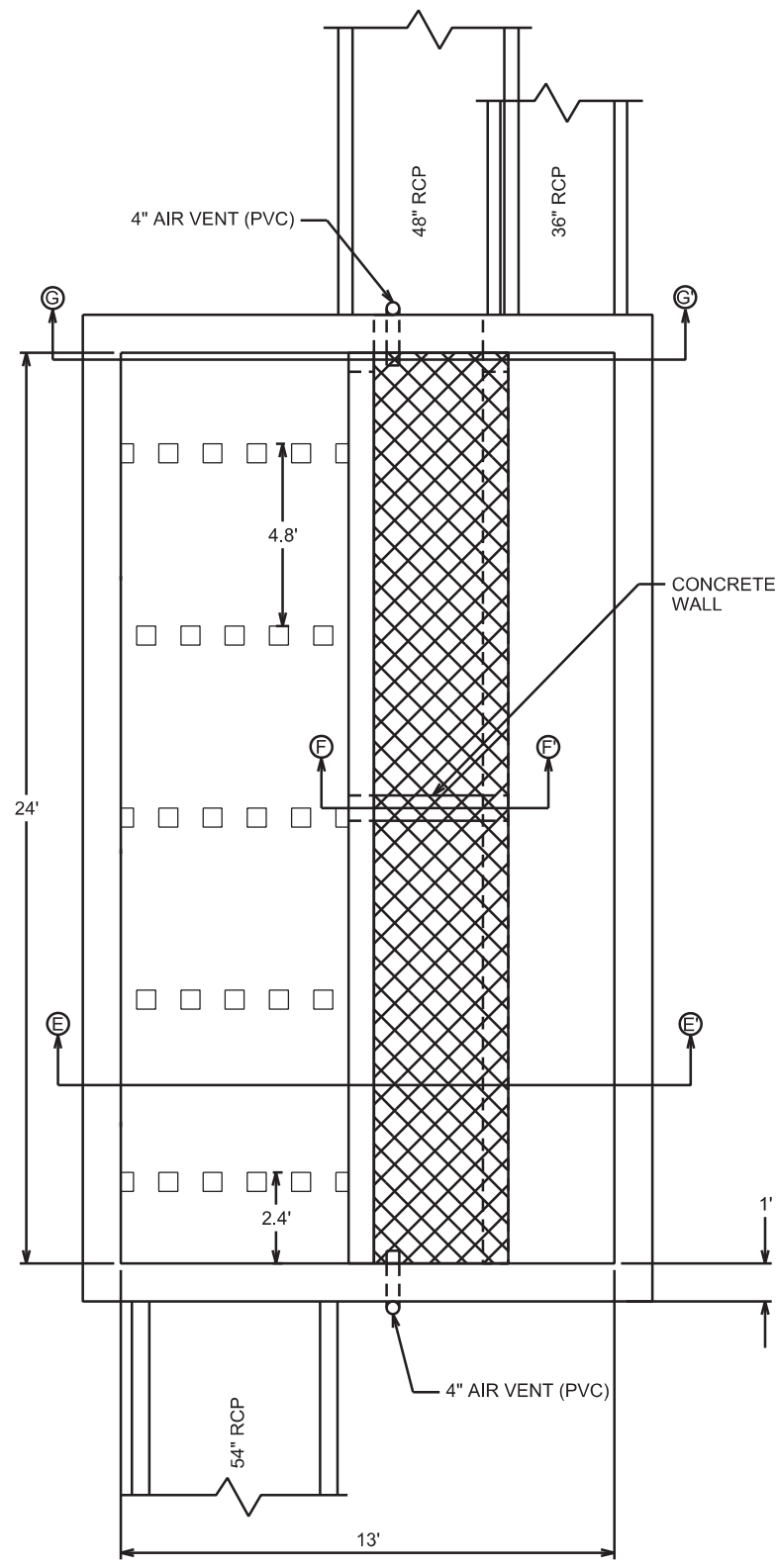
SECTION D-D'



SCALE=1:5

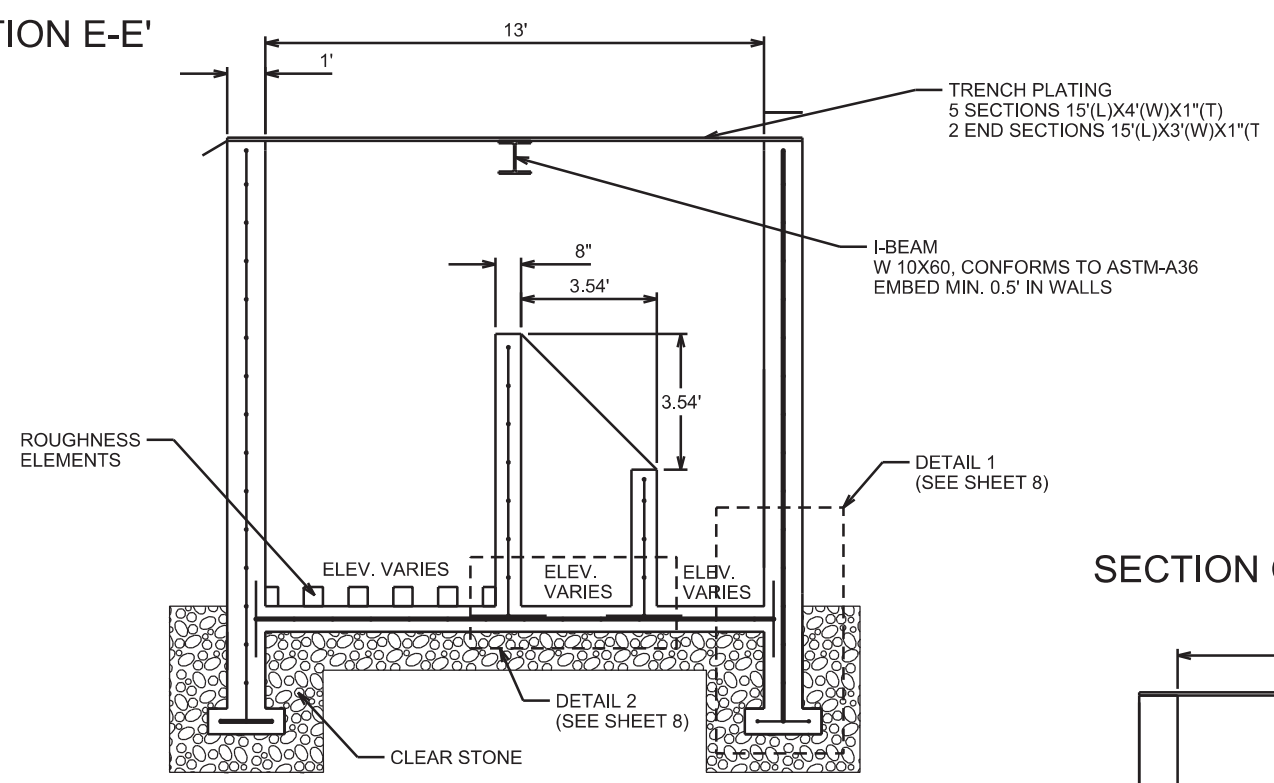
PLOT SCALE: _____
PLOT NAME: _____
REV. DATE: _____
ORIGINATOR: CITY OF MADISON, STREETS DIVISION

PLAN VIEW



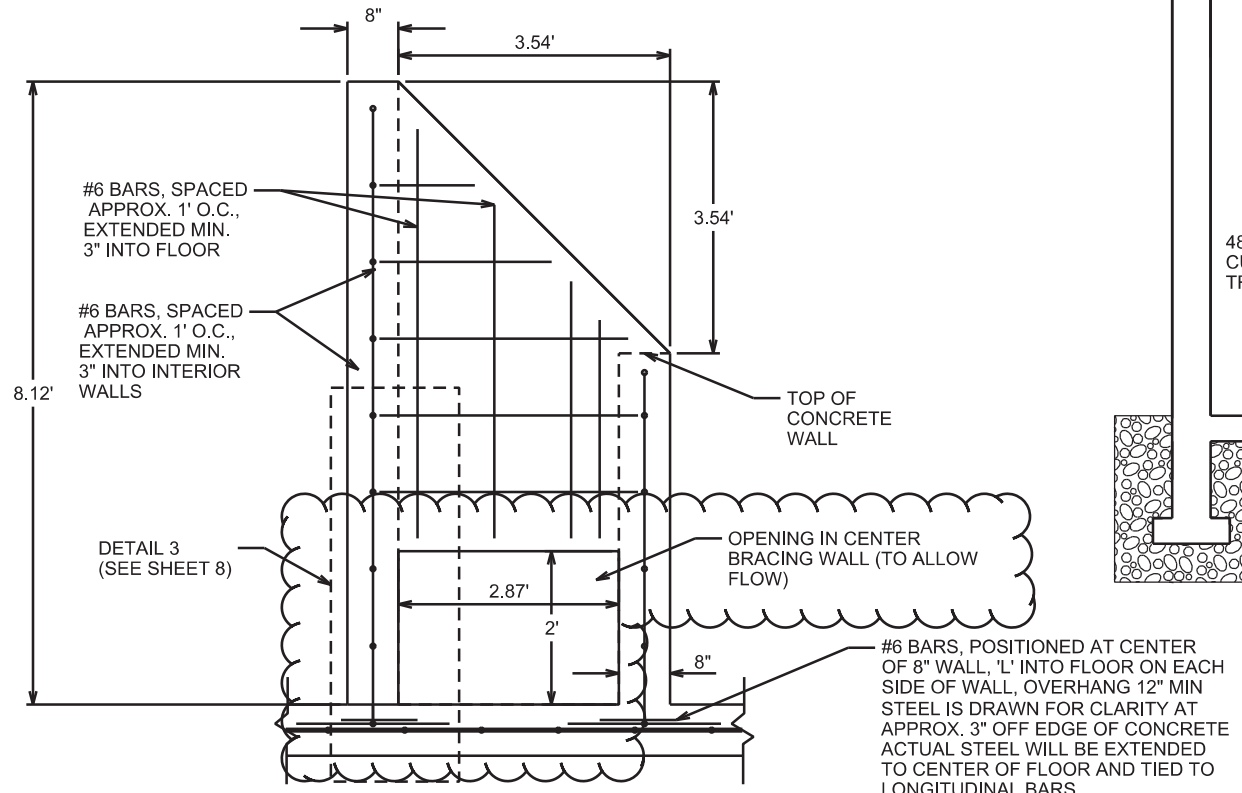
SCALE = 1:5

SECTION E-E'



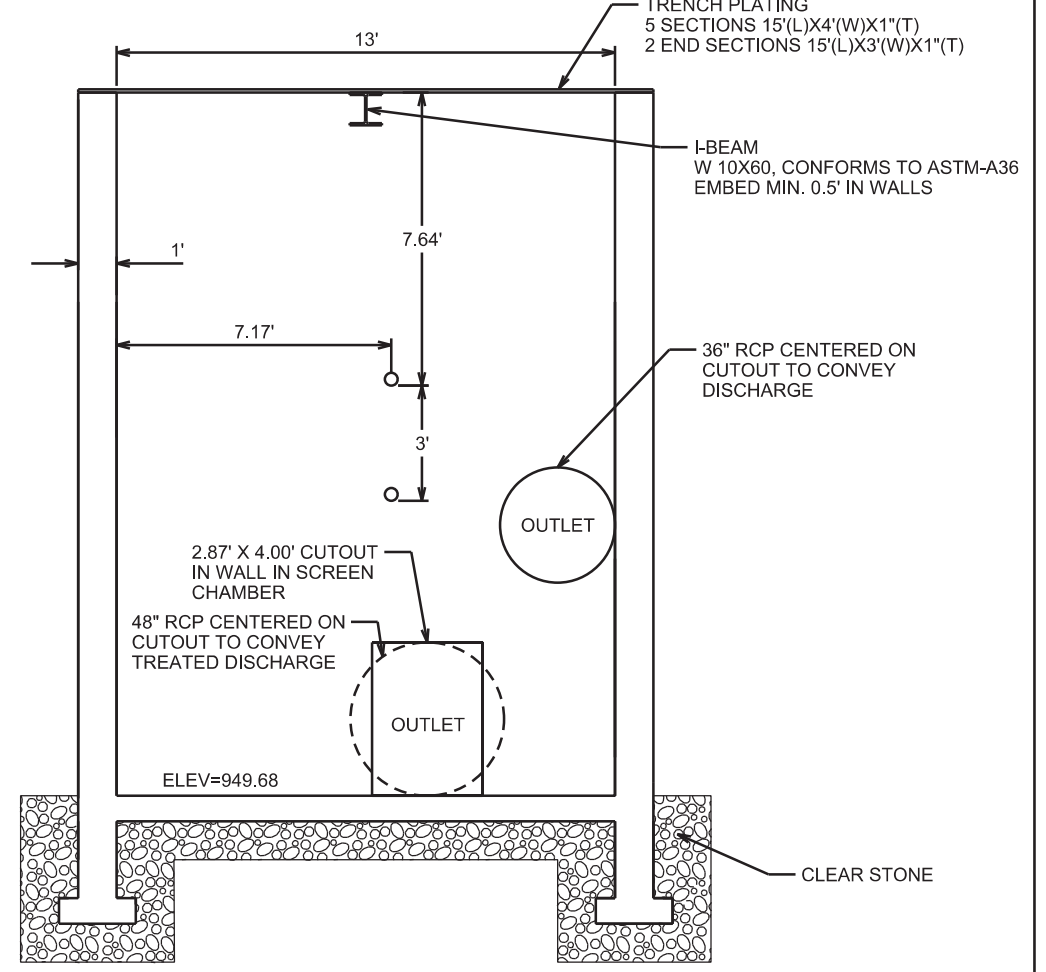
SCALE = 1:5

SECTION F-F'



SCALE = 1:2.5

SECTION G-G'



SCALE = 1:5

PLOT SCALE: _____

PLOT NAME: _____

REV. DATE: _____

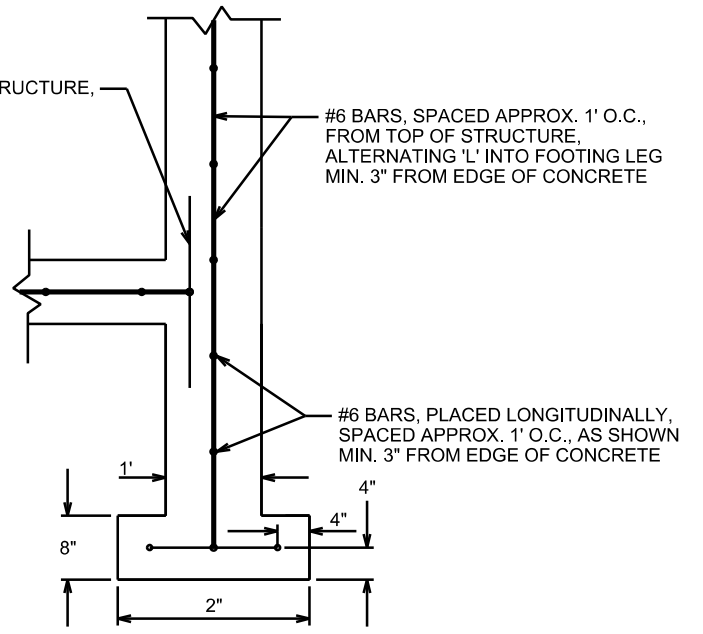
ORIGINATOR: CITY OF MADISON, STREETS DIVISION

DETAIL 1

#6 U-BARS, SPANNING FLOOR OF STRUCTURE, SPACED APPROX. 1' O.C., ALTERNATING 'L' INTO OUTER WALL, OVERHANG 12" MIN
STEEL IS DRAWN FOR CLARITY AT 3" OFF EDGE OF CONCRETE
ACTUAL STEEL WILL BE EXTENDED TO CENTER OF WALL AND TIED TO LONGITUDINAL BARS

#6 BARS, SPACED APPROX. 1' O.C., FROM TOP OF STRUCTURE, ALTERNATING 'L' INTO FOOTING LEG MIN. 3" FROM EDGE OF CONCRETE

#6 BARS, PLACED LONGITUDINALLY, SPACED APPROX. 1' O.C., AS SHOWN MIN. 3" FROM EDGE OF CONCRETE

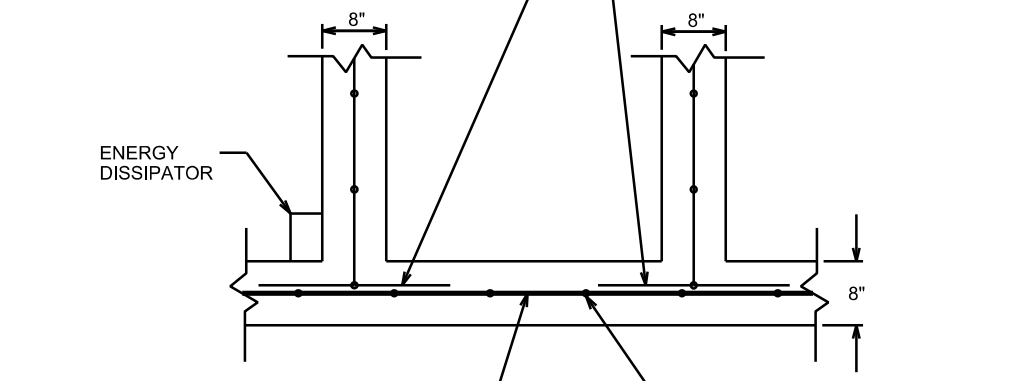


SCALE=1:2

DETAIL 2

#6 BARS, SPACED APPROX. 1' O.C., ALTERNATING 'L' INTO FOOTING LEG OVERHANG 12" MIN
STEEL IS DRAWN FOR CLARITY AT 3" OFF EDGE OF CONCRETE
ACTUAL STEEL WILL BE EXTENDED TO CENTER OF WALL AND TIED TO LONGITUDINAL BARS

#6 BARS PLACED LONGITUDINALLY EACH LEG, AS SHOWN MIN. 3" OF EDGE OF CONCRETE



SCALE=1:2

DETAIL 3

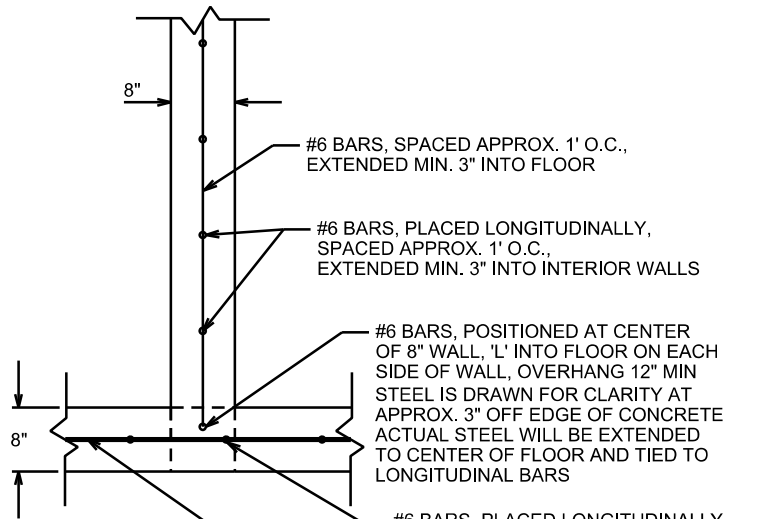
#6 BARS, SPACED APPROX. 1' O.C., EXTENDED MIN. 3" INTO FLOOR

#6 BARS, PLACED LONGITUDINALLY, SPACED APPROX. 1' O.C., EXTENDED MIN. 3" INTO INTERIOR WALLS

#6 BARS, POSITIONED AT CENTER OF 8" WALL, 'L' INTO FLOOR ON EACH SIDE OF WALL, OVERHANG 12" MIN
STEEL IS DRAWN FOR CLARITY AT APPROX. 3" OFF EDGE OF CONCRETE
ACTUAL STEEL WILL BE EXTENDED TO CENTER OF FLOOR AND TIED TO LONGITUDINAL BARS

#6 BARS, PLACED LONGITUDINALLY, SPACED APPROX. 1' O.C., EXTEND MIN. 3" INTO OUTER WALLS

#6 BARS, SPANNING FLOOR OF STRUCTURE, SPACED APPROX. 1' O.C., EXTEND MIN. 3" INTO EXTERIOR WALLS



SCALE=1:2

PLOT SCALE: _____

PLOT NAME: _____

REV. DATE: _____

ORIGINATOR: CITY OF MADISON, STREETS DIVISION

STORM SEWER SCHEDULE

ALIGNMENT CODES:

'STM' - STORM ALIGNMENT

DUNNS MARSH TREATMENT STRUCTURE	SHEET NO.
PROJECT NO. 53W1617	9
STORM SEWER SCHEDULE	
CITY OF MADISON	

REV. LES 12/02/14

PROPOSED STORM STRUCTURES

STRUC NO.	STATION	LOCATION (OFFSET)	TYPE	TOP OF CASTING	E.I.	DEPTH	NOTES
S-1	12'STM'+12.11	RT-0.00	5X5 SAS	962.98	949.44	13.54	FP; W/ R-2578
S-2	11'STM'+83.79	LT-0.42	SCREEN TREATMENT STRUCTURE	967.25	949.68	17.57	FP; SEE SPECIFICATIONS
S-3	11'STM'+46.59	RT-0.00	5X5 SAS	965.10	950.75	14.35	FP; W/ R-1550-0054
S-4	11'STM'+72.27	RT-55.10	SAS TAP	967.75	962.25	5.50	
S-5	12'STM'+11.36	RT-18.99	18-IN RCP 45° BEND	--	959.39	--	INCIDENTAL TO BID ITEM 50413

PROPOSED STORM PIPES

PIPE NO.	FROM SAS (DWNSTRM)	TO SAS (UPSTREAM)	EI # (DWNSTRM)	EI # (UPSTRM)	PIPE LENGTH (FT)	PLAN LENGTH (FT)	SLOPE (%)	SIZE (DIA)	TYPE	NOTES
P-1	S-3	AS 3669-005	958.28	960.61	119	125	1.96%	54"	RCP	
P-2	S-2	S-3	950.64	950.75	21	24	0.50%	54"	RCP	
P-3	S-1	S-2	949.44	949.68	13	15	1.88%	48"	RCP	
P-4	S-1	S-2	955.17	955.24	13	16	0.50%	36"	RCP	
P-5	AS 3670-006	S-1	948.38	949.44	212	216	0.50%	54"	RCP	
P-6	S-1	S-4	958.98	962.25	65	67	5.05%	18"	RCP	
P-7	S-1	S-5	958.98	959.39	47	49	2.47%	18"	RCP	

STORM STRUCTURE REMOVALS

STRUC NO.	ID NO.	STATION	LOCATION (OFFSET)	TYPE	NOTES
R-1	AS 3670-013	11'STM'+61.34	LT-1.53	ACCESS STRUCTURE	

STORM PIPE REMOVALS

PIPE REMOVAL NO.	REMOVE FROM	REMOVE TO	LENGTH (FT)	PAID (Y/N)	SIZE	TYPE	NOTES
RP-1	AS 3670-013	STA 11'STM'+51.19	11	Y	18"	RCP	ENDWALL INCLUDED IN PIPE LENGTH
RP-2	AS 3670-013	S-4	56	Y	18"	RCP	

STANDARD NOTES:

- ABBREVIATIONS: AE = APRON ENDWALL; RCP = REINFORCED CONCRETE PIPE; HERCP = HORIZONTAL ELLIPTICAL REINFORCED CONCRETE PIPE; DNA = DOES NOT APPLY; SAS = SEWER ACCESS STRUCTURE; LP = LOW POINT INLET STRUCTURE; FP = FIELD POURED STRUCTURE; TR = TOP OF CONCRETE ROOF; NCM = NO CROWN MATCH FOR PIPES; UD = UNDERDRAIN
- APPROXIMATE DISCHARGE E.I. GIVEN, ADJUST E.I. AND PIPE SLOPE IN THE FIELD.
- TOP OF CASTING GRADE GIVEN IS THE TOP OF CURB FOR INLET STRUCTURES AND THE FLOWLINE OF THE CLOSED CASTING FOR SAS'S.
- TOP OF CONCRETE ROOF (TR) IS 1.25' BELOW TOP OF CASTING UNLESS OTHERWISE NOTED.
- ALL REINFORCED CONCRETE PIPES TO BE CLASS III UNLESS OTHERWISE NOTED.
- SURVEYOR TO CONFIRM THAT ALL INLET STATION / OFFSETS LINE UP WITH PROPOSED CURB AND GUTTER.
- ALL STRUCTURES CALLED OUT AS FIELD POURED SHALL BE FIELD POURED. ALL OTHER STRUCTURES (NOT INDICATED AS FIELD POURED) SHALL BE SUBMITTED TO CITY ENGINEERING FOR APPROVAL IF PRECAST STRUCTURES ARE PREFERRED. CONTACT LAUREN STRIEGL OF CITY ENGINEERING AT (608) 266-4094, LSTRIEGL@CITYOFMADISON.COM, FOR PRECAST APPROVALS, OR FAX SHOP DRAWINGS TO (608) 264-9275.

PLOT SCALE: 1"=40'

PLOT NAME: 11'STM'+11.36

REV. DATE: 12/02/14