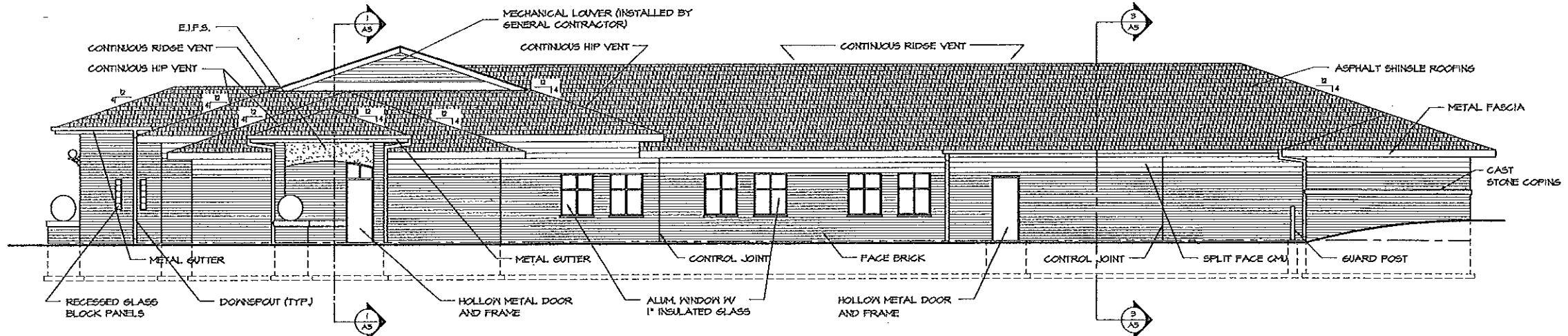
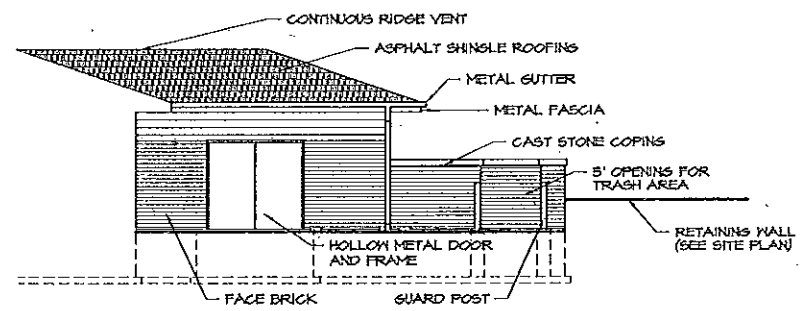


SEE SITE DRAWING FOR LOCATION + FLAGPOLE BASE DETAIL
 (1) 125

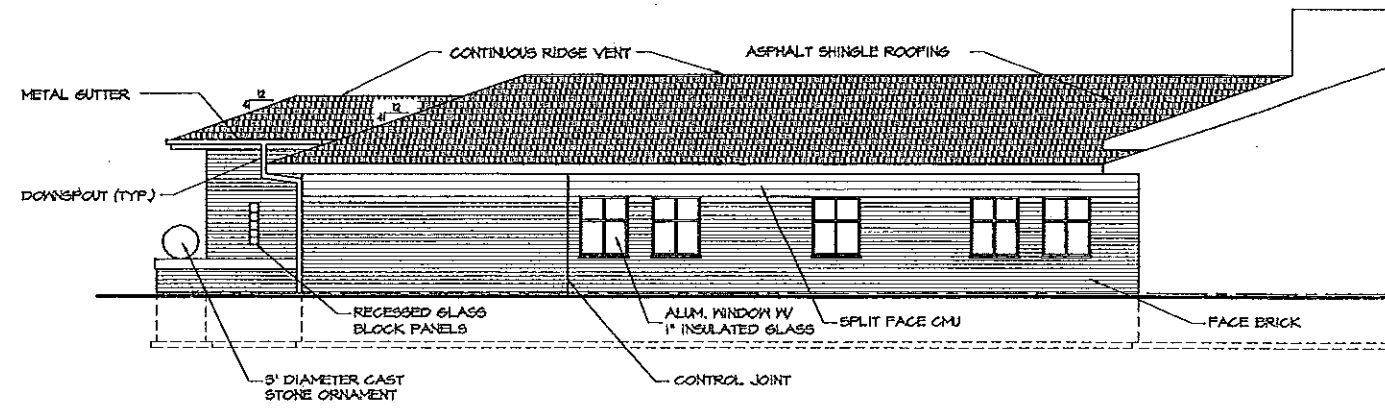
(1) EAST ELEVATION
 A3 SCALE 1/8" = 1'-0"



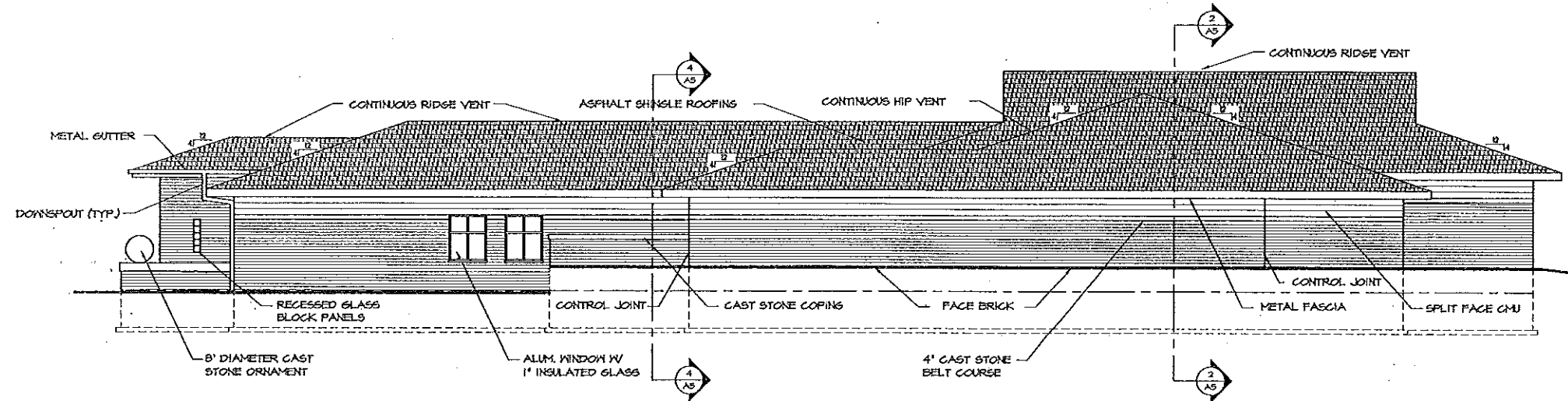
(2) NORTH ELEVATION
 A3 SCALE 1/8" = 1'-0"



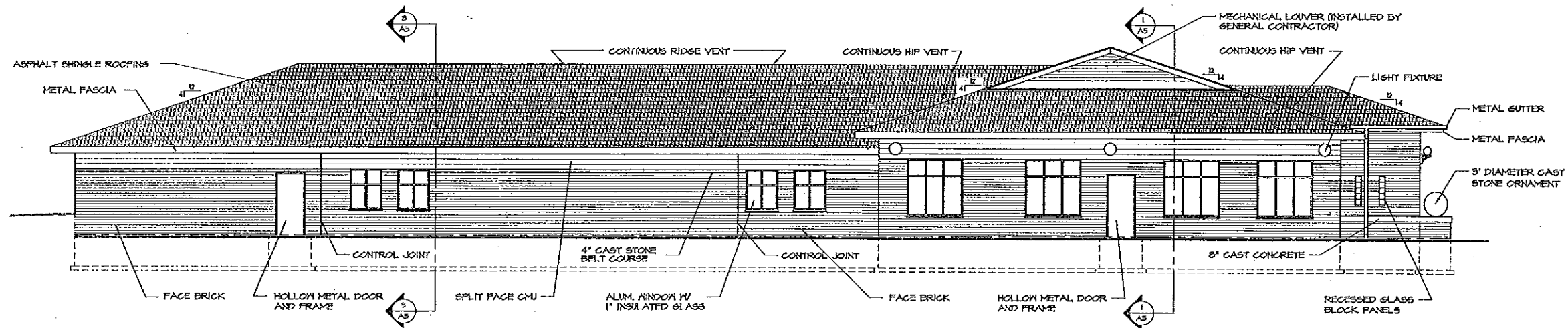
(3) PARTIAL EAST
 A3 SCALE 1/8" = 1'-0"



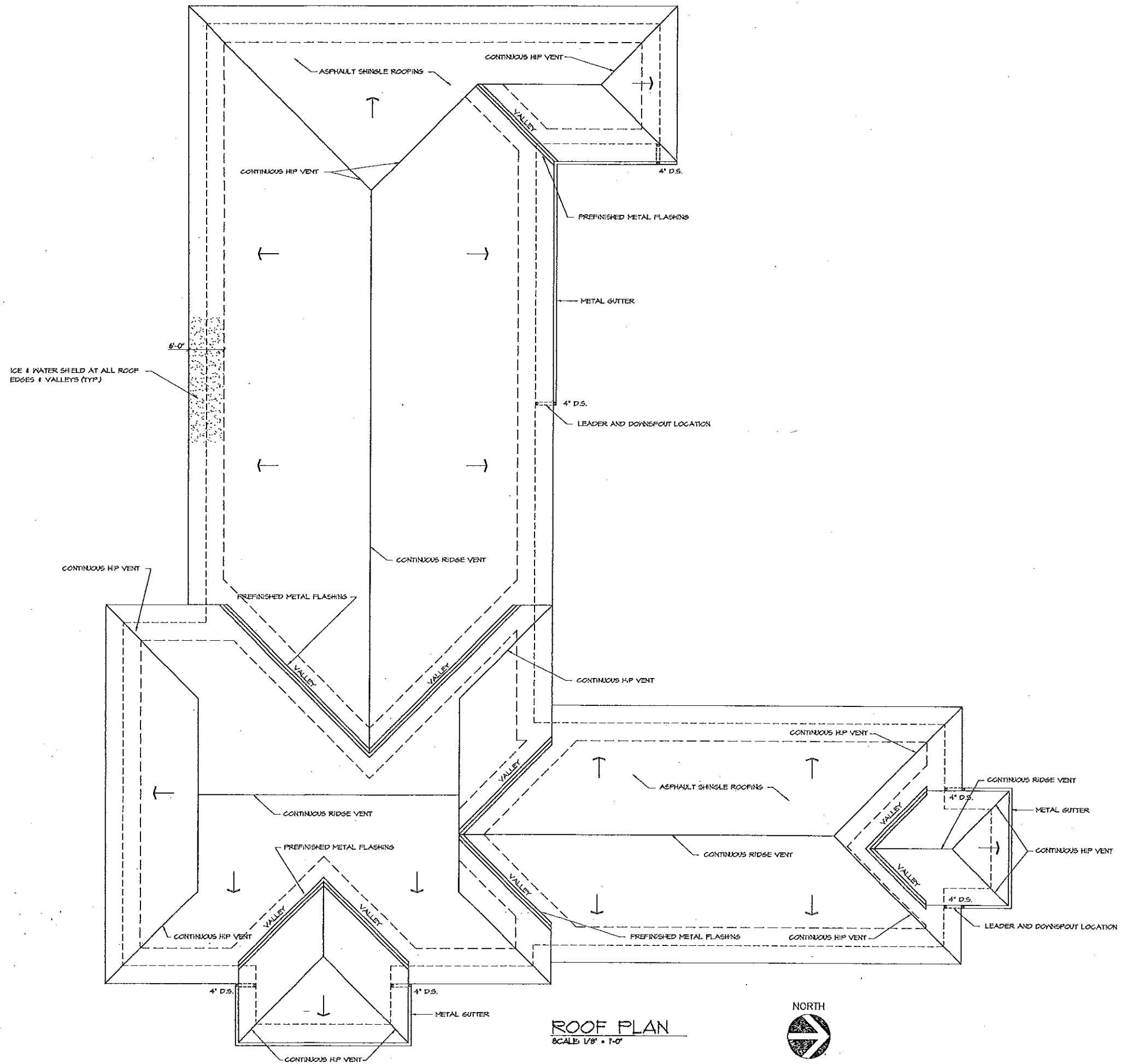
1 PARTIAL WEST
SCALE: 1/8" = 1'-0"



2 WEST ELEVATION
SCALE: 1/8" = 1'-0"



3 SOUTH ELEVATION
SCALE: 1/8" = 1'-0"



ROOF PLAN
 SCALE: 1/8" = 1'-0"



