

Madison, Wisconsin

CITY OF MADISON

CITY ENGINEERING DIVISION

DEPARTMENT OF PUBLIC WORKS

PLAN OF PROPOSED IMPROVEMENT

PUBLIC IMPROVEMENT PROJECT APPROVED

MARCH 21, 2017

BY THE COMMON COUNCIL OF MADISON, WISCONSIN

PUBLIC IMPROVEMENT DESIGN APPROVED BY:

[Signature] 4/21/17
City Engineer Date

STREET DESIGNED BY:

[Signature]
STEVEN M. SONNTAG
E-38891
MADISON WI
4/21/2017
PROFESSIONAL ENGINEER

INDEX OF SHEETS

SHEET NO.	TITLE
1	
P1-P2	PLAN - HIGHLAND AVE. & WALNUT ST. BRIDGE REPAIRS
P-3	PLAN - ATWOOD AVE. BRIDGE REPAIRS
TC1-TC7	TRAFFIC CONTROL
M1-M2	PAVEMENT MARKING

BRIDGE REPAIRS - 2017

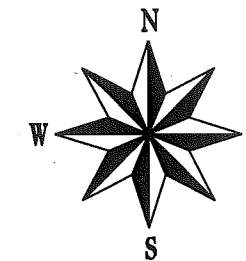
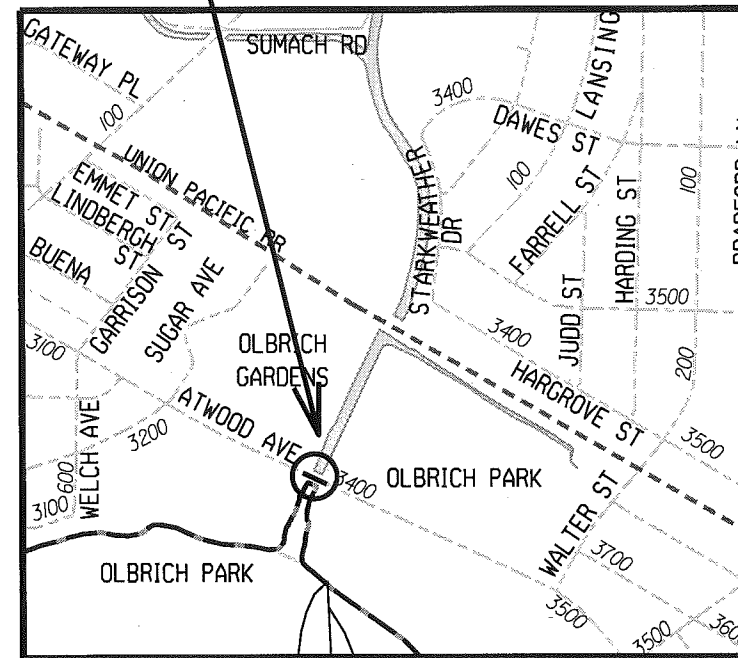
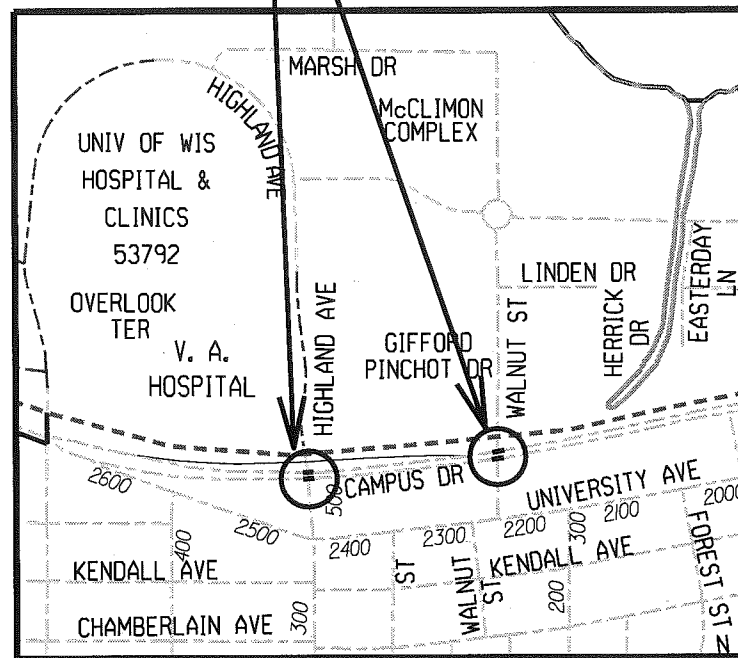
CITY PROJECT NO. 11468

7800

CONSTRUCTION PROJECT LOCATION

CONVENTIONAL SIGNS	
FIELD VERIFY ALL UTILITY LOCATIONS	
GAS	— G —
STORM SEWER	— ST —
SANITARY SEWER	— SAN —
WATER	— W —
OVERHEAD ELECTRIC	— OH —
POWER POLE	□
ADA COMPLIANT RAMP W/ DETECTABLE WARNING FIELD	□

NOTES:
 ALL GUTTERS SHALL DRAIN WITH A MINIMUM GRADE OF 0.50% TOWARD STORM SEWER INLETS.
 SIDEWALK RAMPS AND CURB THRU SIDEWALK RAMPS SHALL HAVE A MAXIMUM SLOPE OF 1" PER 12". SIDEWALK AND CURB RAMPS SHALL BE CONSTRUCTED WITH A SIDE SLOPE OF 2.00%.
 SIDEWALK SHALL HAVE A MINIMUM LONGITUDINAL SLOPE OF 0.50% AND A MAXIMUM LONGITUDINAL SLOPE OF 5.00% EXCEPT WHERE STREET GRADES EXCEED 5.00%.



PLOT SCALE: _____ REV. DATE: _____ ORIGINATOR: CITY OF MADISON, STREETS DIVISION

TOTAL ESTIMATED QUANTITIES

BID ITEMS	ESTIMATED QUANTITY	UNIT
PROTECTIVE SURFACE TREATMENT	800.0	S.Y.
BAR STEEL REINFORCEMENT HS COATED BRIDGES	800.0	LB
PREPARATION DECKS TYPE 1	120.0	S.Y.
PREPARATION DECKS TYPE 2	60.0	S.Y.
CURB REPAIR	55.0	L.F.
FULL-DEPTH DECK REPAIR	15.0	S.Y.
CONCRETE MASONRY OVERLAY DECKS	70.0	C.Y.
REMOVING CONCRETE MASONRY DECK OVERLAY	778.0	S.Y.

GENERAL NOTES

DRAWINGS SHALL NOT BE TO SCALED.

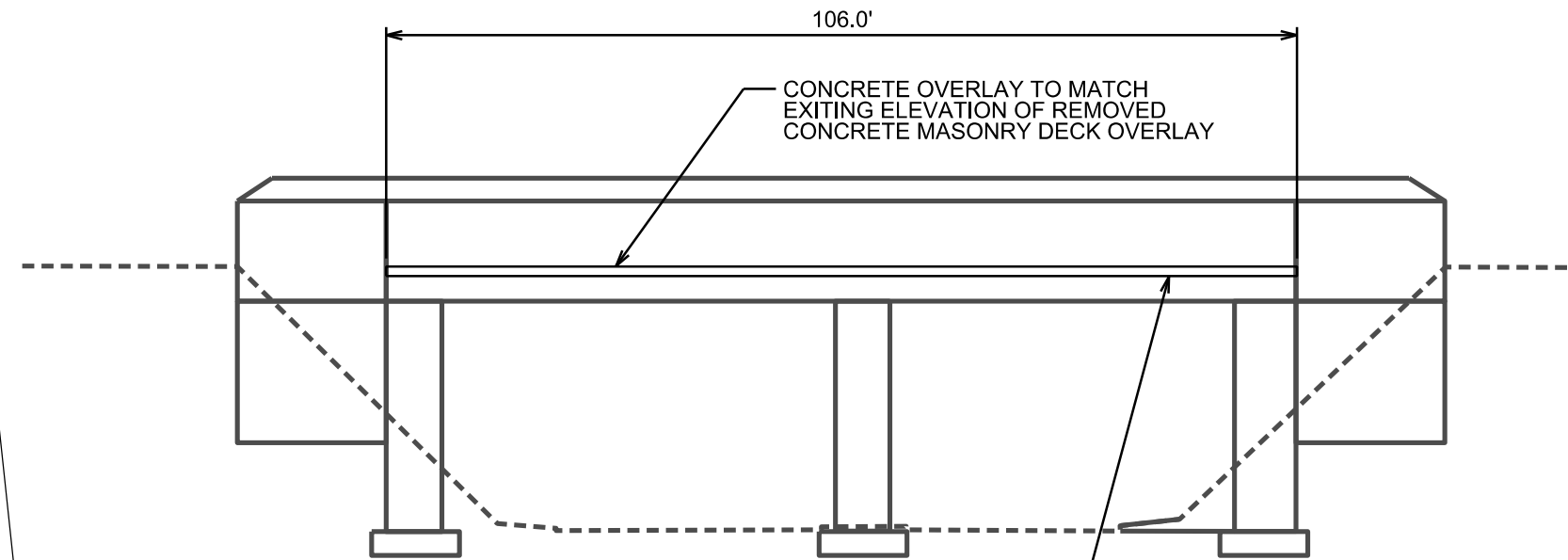
DIMENSIONS SHOWN ARE BASED ON EXISTING ORIGINAL STRUCTURE PLANS. BAR STEEL REINFORCEMENT SHALL BE EMBEDDED 2" CLEAR UNLESS OTHERWISE NOTED.

PROTECTIVE SURFACE TREATMENT TO BE APPLIED TO THE ENTIRE EXPOSED TOP OF DECK, AND THE CURB FROM END TO END.

ANY EXCAVATION NECESSARY TO COMPLETE THE OVERLAY AT THE ABUTMENTS IS TO BE CONSIDERED INCIDENTAL TO THE BID ITEM "CONCRETE MASONRY OVERLAY DECKS".

PREPERATION DECKS TYPE 1, PREPERATION DECKS TYPE 2, FULL-DEPTH DECK REPAIR, CURB REPAIR AND CONCRETE SURFACE REPAIR ARE FOR INFORMATION PURPOSES ONLY AND FINAL AREAS TO VE DETERMINED BY THE ENGINEER. PREPARATION DECKS TYPE 2 AREAS ESTIMATED AT 50% OF TYPE 1 AREAS FOR THIS BRIDGE.

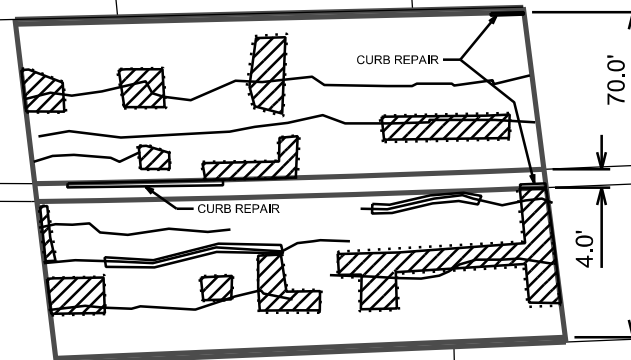
HIGHLAND AVENUE



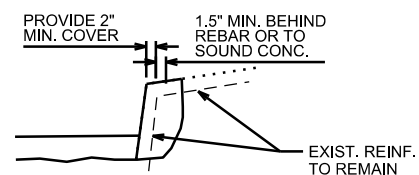
REMOVE 2.25" ± EXISTING CONCRETE OVERLAY TO TOP OF ORIGINAL DECK OR TO SOUND CONCRETE,WHICHEVER IS GREATER. WORK SHALL BE COVERED UNDER BID ITEM:"REMOVING CONCRETE MASONRY DECK OVERLAY"

EXIT RAMP TO HIGHLAND AVENUE

CAMPUS DRIVE



CURB REPAIR DETAIL



- EXISTING CRACK
 - DELAMINATION AREAS
 - FULL-DEPTH DECK REPAIR
 - ESTIMATED DECK PREPARATION TYPE 1 AREAS
- ESTIMATED AVERAGE OVERLAY THICKNESS = 3.25"



STRUCTURE B-13-0266

PLOT SCALE:

PLOT NAME:

REV. DATE:

ORIGINATOR: CITY OF MADISON, STREETS DIVISION

TOTAL ESTIMATED QUANTITIES

BID ITEMS	ESTIMATED QUANTITY	UNIT
PROTECTIVE SURFACE TREATMENT	470.0	S.Y.
BAR STEEL REINFORCEMENT HS COATED BRIDGES	430.0	LB
PREPARATION DECKS TYPE 1	92.0	S.Y.
PREPARATION DECKS TYPE 2	46.0	S.Y.
CURB REPAIR	10.0	L.F.
FULL-DEPTH DECK REPAIR	5.0	S.Y.
CONCRETE MASONRY OVERLAY DECKS	45.0	C.Y.
REMOVING CONCRETE MASONRY DECK OVERLAY	456.0	S.Y.

GENERAL NOTES

DRAWINGS SHALL NOT BE TO SCALED.

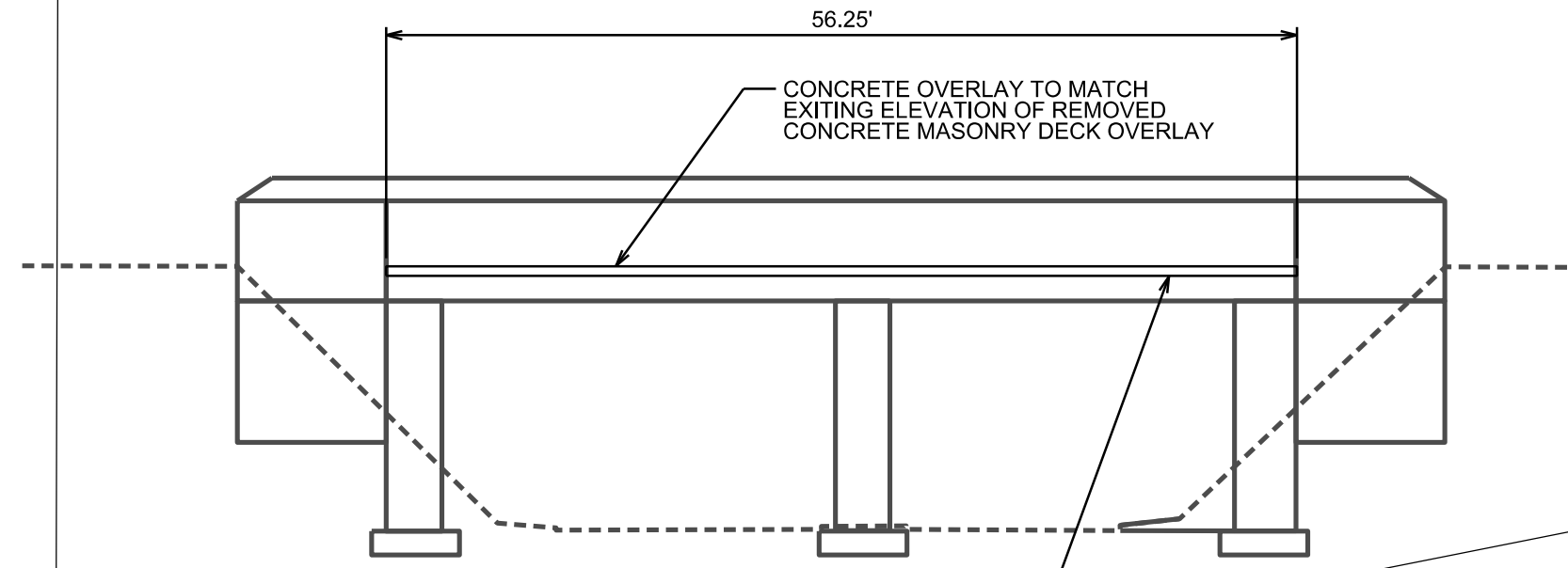
DIMENSIONS SHOWN ARE BASED ON EXISTING ORIGINAL STRUCTURE PLANS. BAR STEEL REINFORCEMENT SHALL BE EMBEDDED 2" CLEAR UNLESS OTHERWISE NOTED.

PROTECTIVE SURFACE TREATMENT TO BE APPLIED TO THE ENTIRE EXPOSED TOP OF DECK, AND THE CURB FROM END TO END.

ANY EXCAVATION NECESSARY TO COMPLETE THE OVERLAY AT THE ABUTMENTS IS TO BE CONSIDERED INCIDENTAL TO THE BID ITEM "CONCRETE MASONRY OVERLAY DECKS".

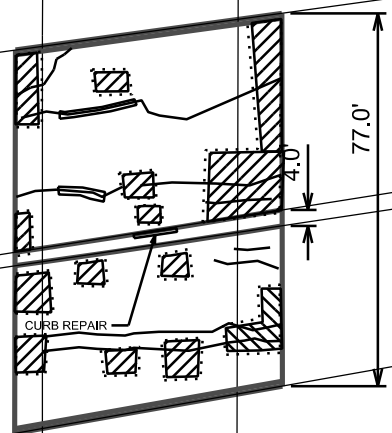
PREPERATION DECKS TYPE 1, PREPERATION DECKS TYPE 2, FULL-DEPTH DECK REPAIR, CURB REPAIR AND CONCRETE SURFACE REPAIR AREAS ARE FOR INFORMATION PURPOSES ONLY AND FINAL AREAS TO VE DETERMINED BY THE ENGINEER. PREPERATION DECKS TYPE 2 AREAS ESTIMATED AT 50% OF TYPE 1 AREAS FOR THIS BRIDGE.

WALNUT STREET

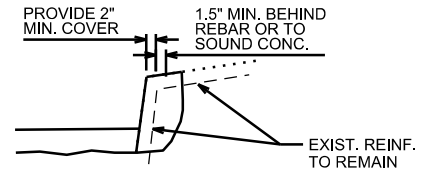


REMOVE 2.25" + EXISTING CONCRETE OVERLAY TO TOP OF ORIGINAL DECK OR TO SOUND CONCRETE,WHICHEVER IS GREATER. WORK SHALL BE COVERED UNDER BID ITEM:"REMOVING CONCRETE MASONRY DECK OVERLAY"

CAMPUS DRIVE

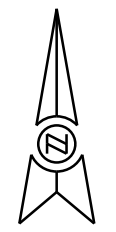


CURB REPAIR DETAIL



- EXISTING CRACK
- DELAMINATION AREAS
- FULL-DEPTH DECK REPAIR
- ESTIMATED DECK PREPARATION TYPE 1 AREAS

ESTIMATED AVERAGE OVERLAY THICKNESS = 3.25"



STRUCTURE B-13-0265

PLOT SCALE: _____

PLOT NAME: _____

REV. DATE: _____

ORIGINATOR: CITY OF MADISON, STREETS DIVISION

TOTAL ESTIMATED QUANTITIES

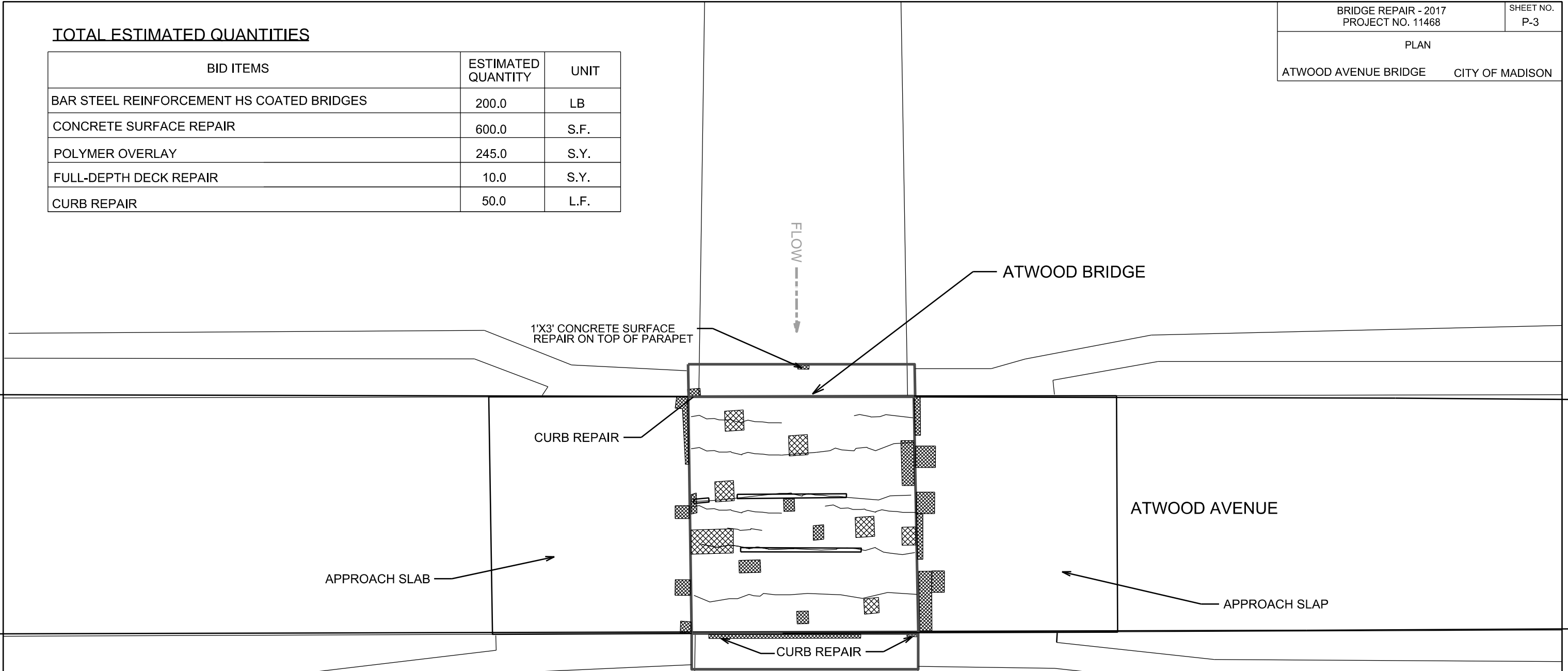
BID ITEMS	ESTIMATED QUANTITY	UNIT
BAR STEEL REINFORCEMENT HS COATED BRIDGES	200.0	LB
CONCRETE SURFACE REPAIR	600.0	S.F.
POLYMER OVERLAY	245.0	S.Y.
FULL-DEPTH DECK REPAIR	10.0	S.Y.
CURB REPAIR	50.0	L.F.

PLOT SCALE: _____

PLOT NAME: _____

REV. DATE: _____

ORIGINATOR: CITY OF MADISON, STREETS DIVISION

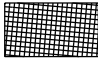

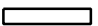


GENERAL NOTES

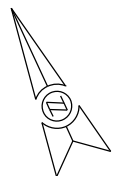
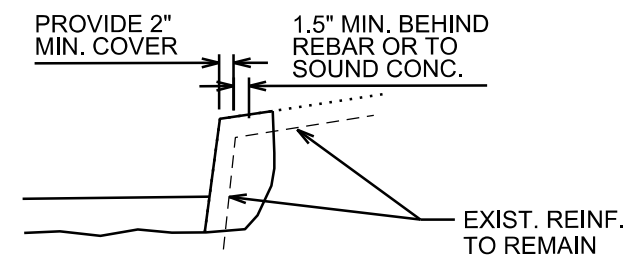
DRAWINGS SHALL NOT BE TO SCALED.

DIMENSIONS SHOWN ARE BASED ON EXISTING ORIGINAL STRUCTURE PLANS. BAR STEEL REINFORCEMENT SHALL BE EMBEDDED 2" CLEAR UNLESS OTHERWISE NOTED.

POLYMER OVERLAY TO BE INSTALLED AFTER REQUIRED CONCRETE CURE TIME IN ACCORDANCE WITH THE STANDARD SPECIFICATION

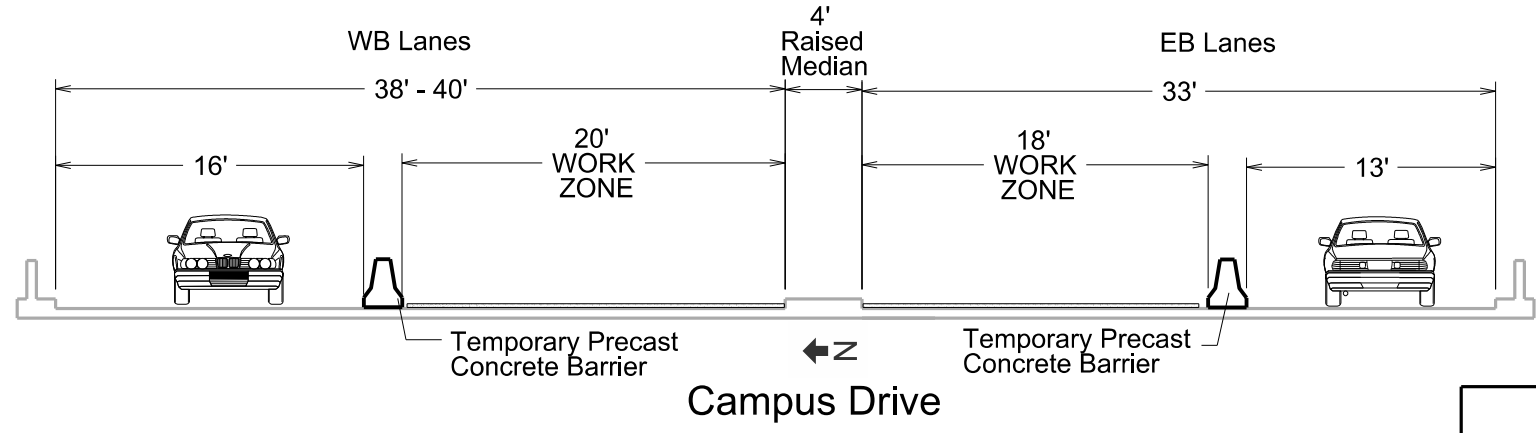
-  CONCRETE SURFACE REPAIR
-  EXISTING CRACK
-  FULL DEPTH CONCRETE REPAIR

CURB REPAIR DETAIL



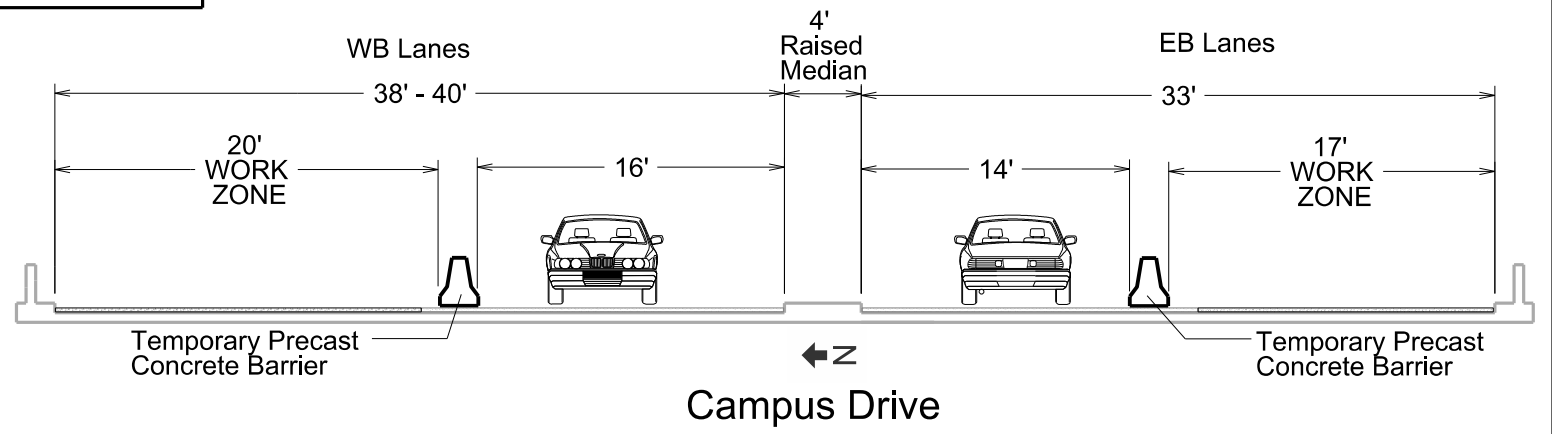
STRUCTURE B-13-254

Phase 1

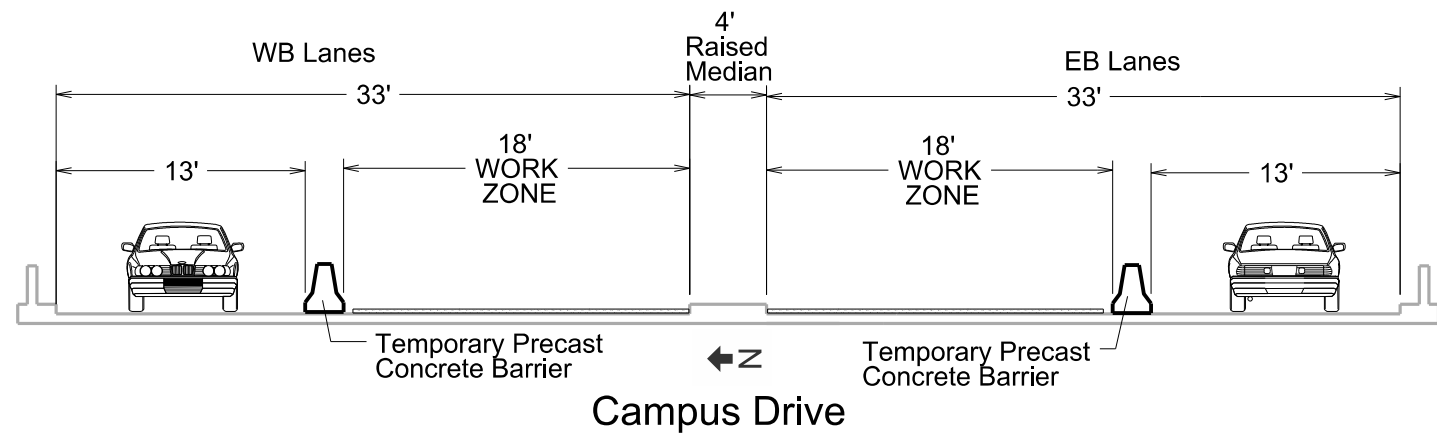


Campus Drive
Cross Section - Bridge over Walnut Ave

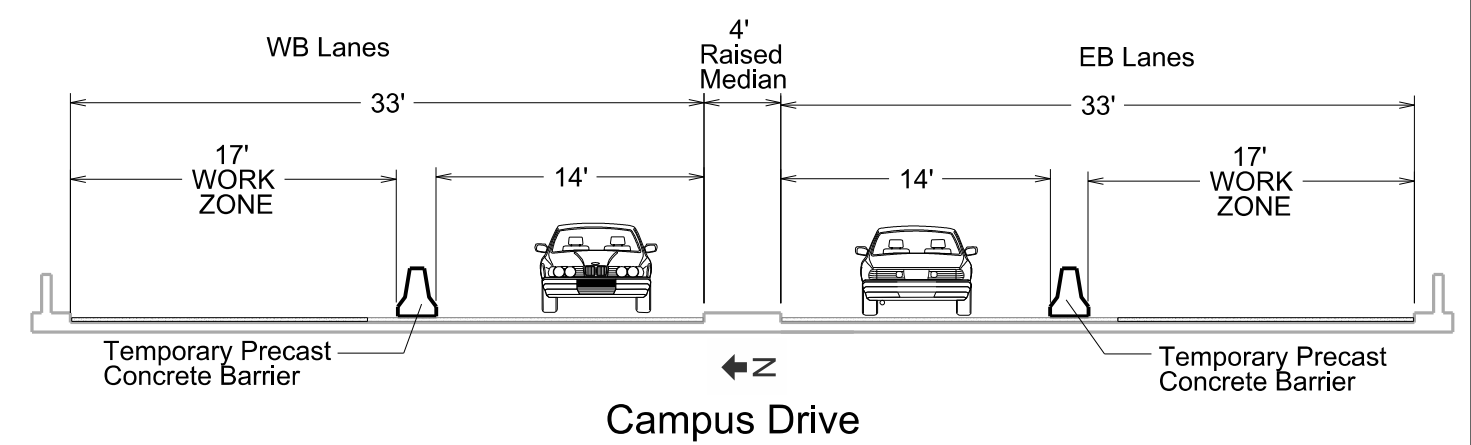
Phase 2



Campus Drive
Cross Section - Bridge over Walnut Ave



Campus Drive
Cross Section - Bridge over Highland Ave



Campus Drive
Cross Section - Bridge over Highland Ave

PLOT SCALE:

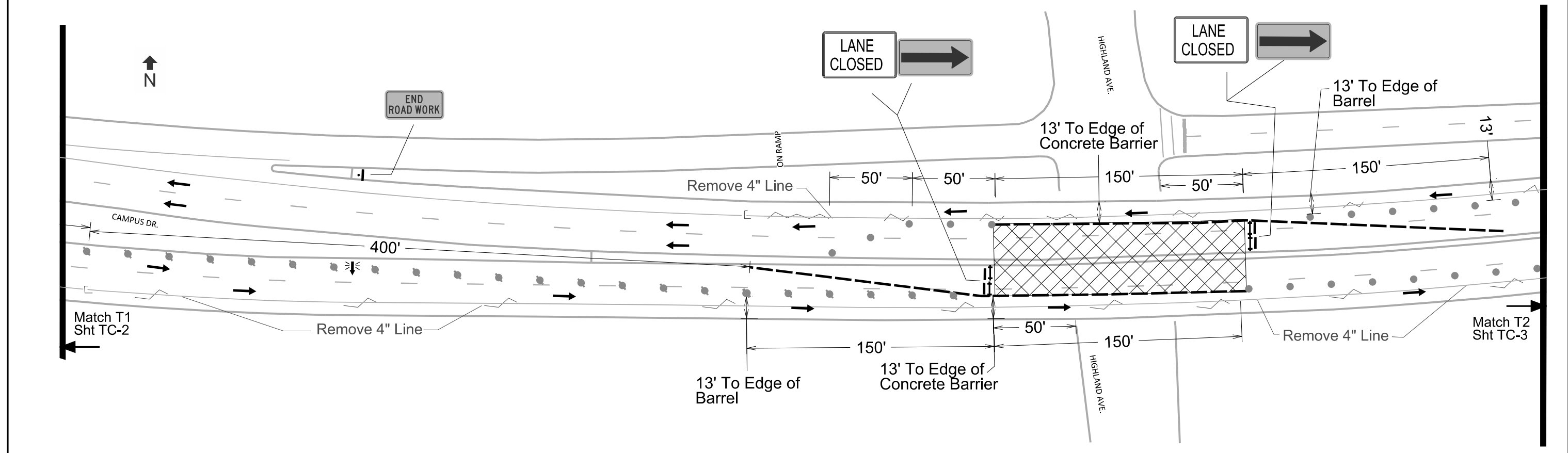
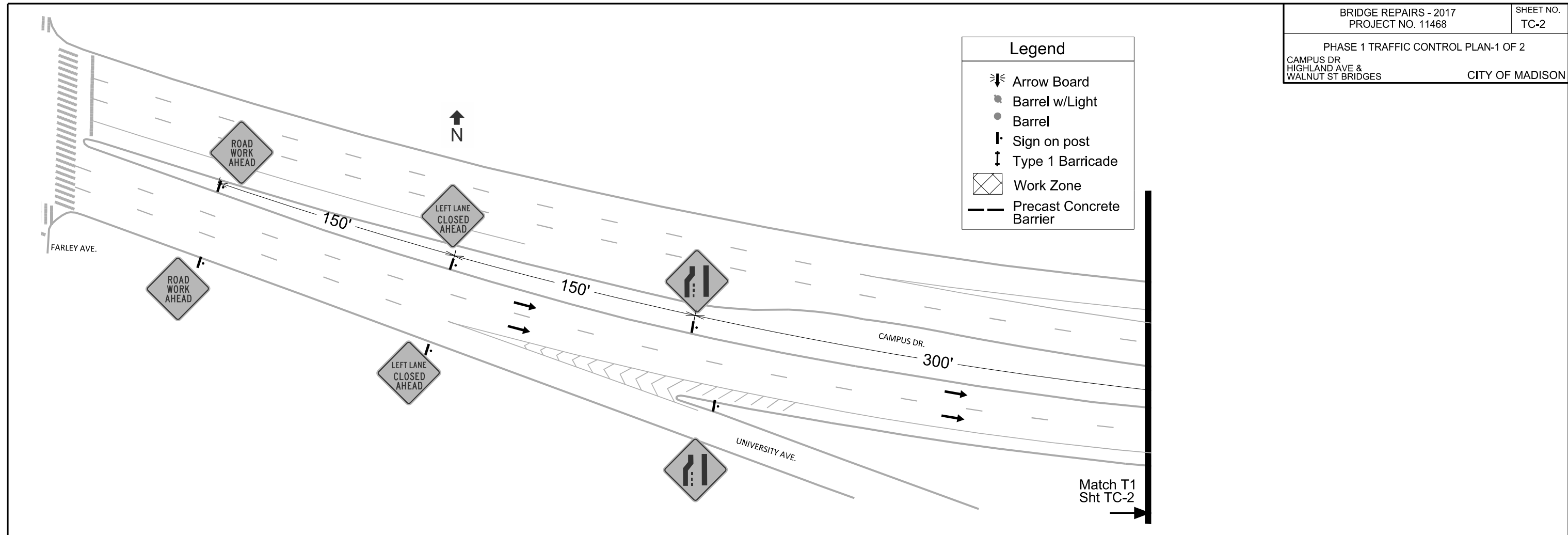
PLOT NAME:

REV. DATE:

ORIGINATOR: CITY OF MADISON, TRAFFIC ENG. DIV.

Legend

- Arrow Board
- Barrel w/Light
- Barrel
- Sign on post
- Type 1 Barricade
- Work Zone
- Precast Concrete Barrier



PLOT SCALE:
PLOT NAME:
REV. DATE:
ORIGINATOR: CITY OF MADISON, TRAFFIC ENG. DIV.

Legend

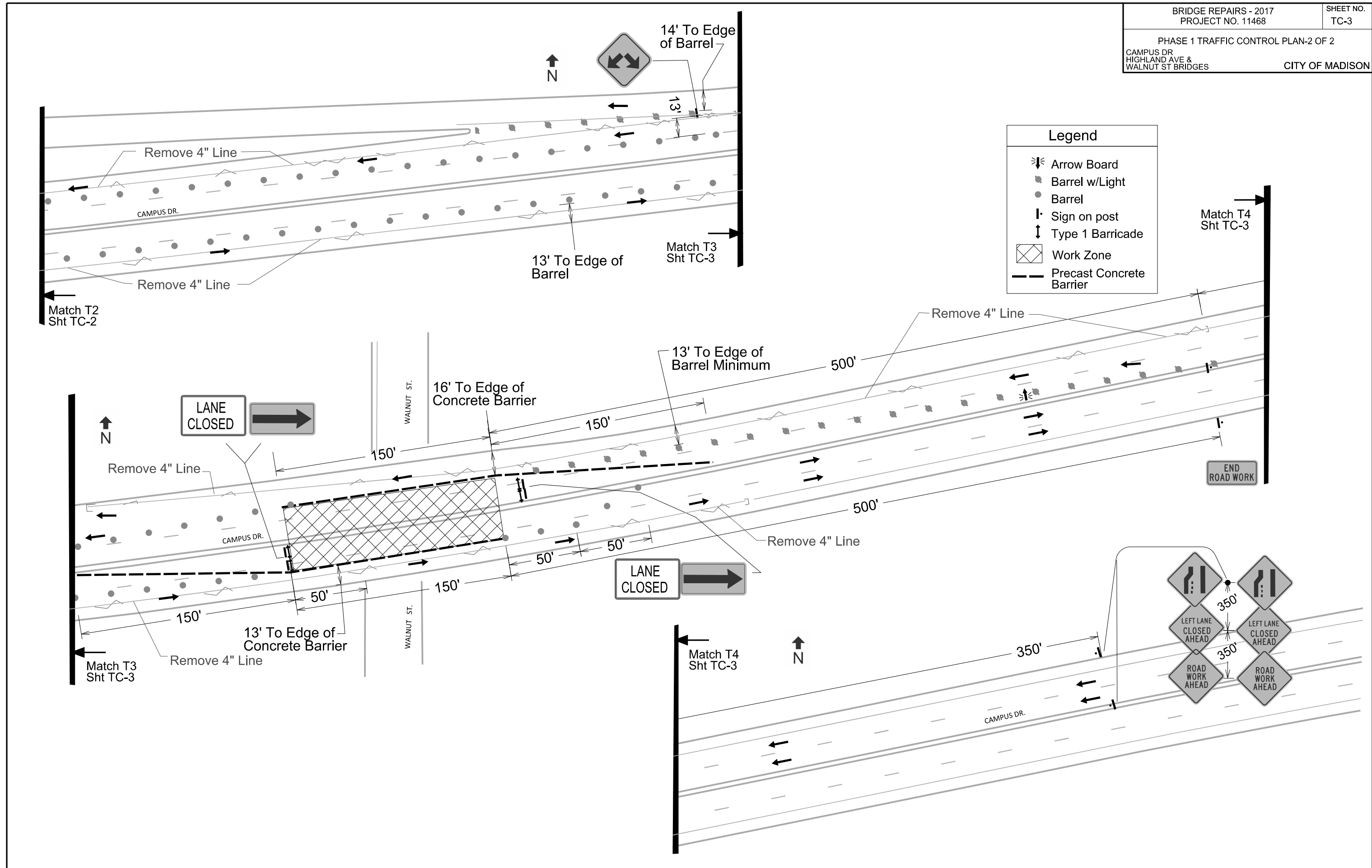
- Arrow Board
- Barrel w/Light
- Barrel
- Sign on post
- Type 1 Barricade
- Work Zone
- Precast Concrete Barrier

PLOT SCALE:

PLOT NAME:

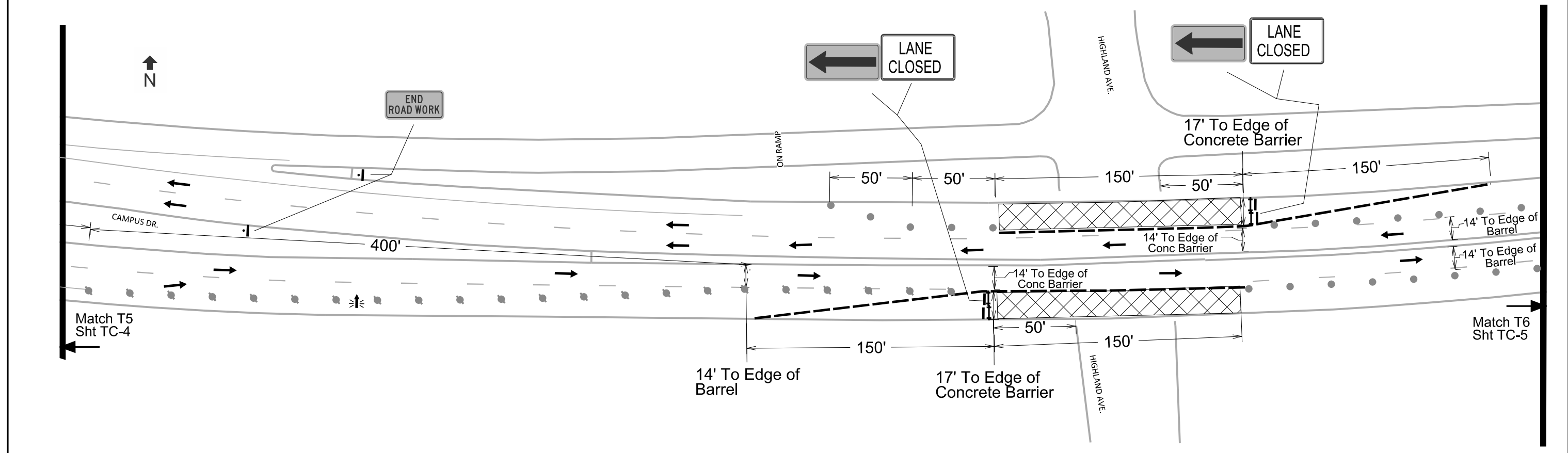
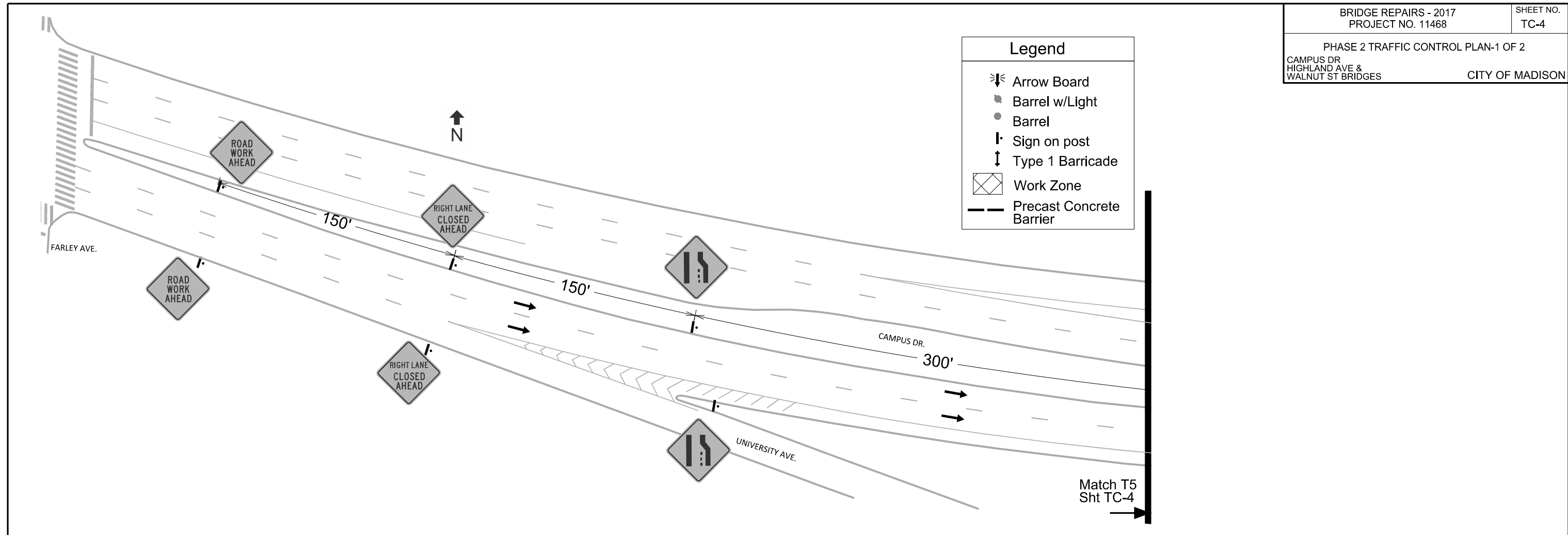
REV. DATE:

ORIGINATOR: CITY OF MADISON, TRAFFIC ENG. DIV.



Legend

- Arrow Board
- Barrel w/Light
- Barrel
- Sign on post
- Type 1 Barricade
- Work Zone
- Precast Concrete Barrier



PLOT SCALE:
PLOT NAME:
REV. DATE:
ORIGINATOR: CITY OF MADISON, TRAFFIC ENG. DIV.

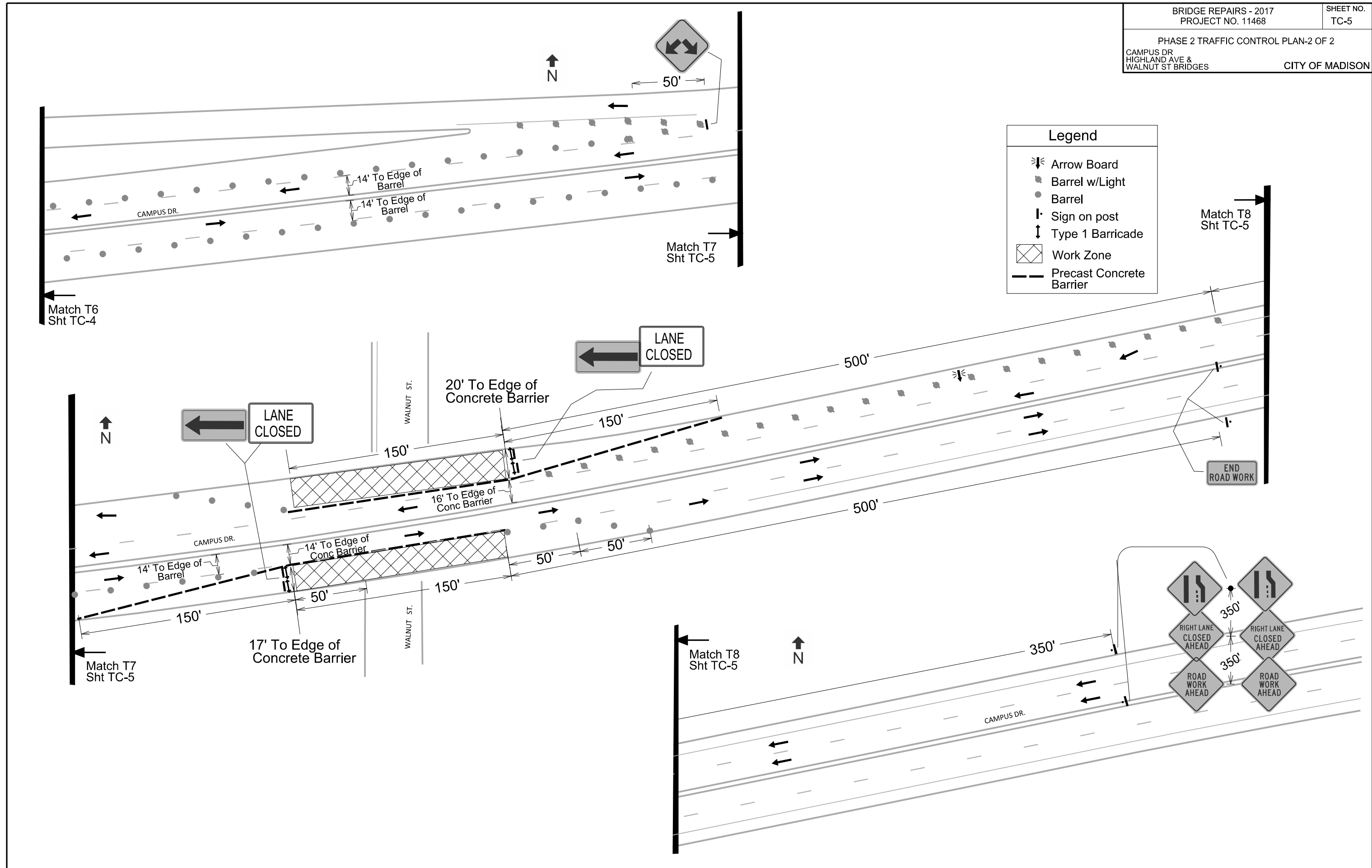
Legend	
	Arrow Board
	Barrel w/Light
	Barrel
	Sign on post
	Type 1 Barricade
	Work Zone
	Precast Concrete Barrier

PLOT SCALE:

PLOT NAME:

REV. DATE:

ORIGINATOR: CITY OF MADISON, TRAFFIC ENG. DIV.



Legend

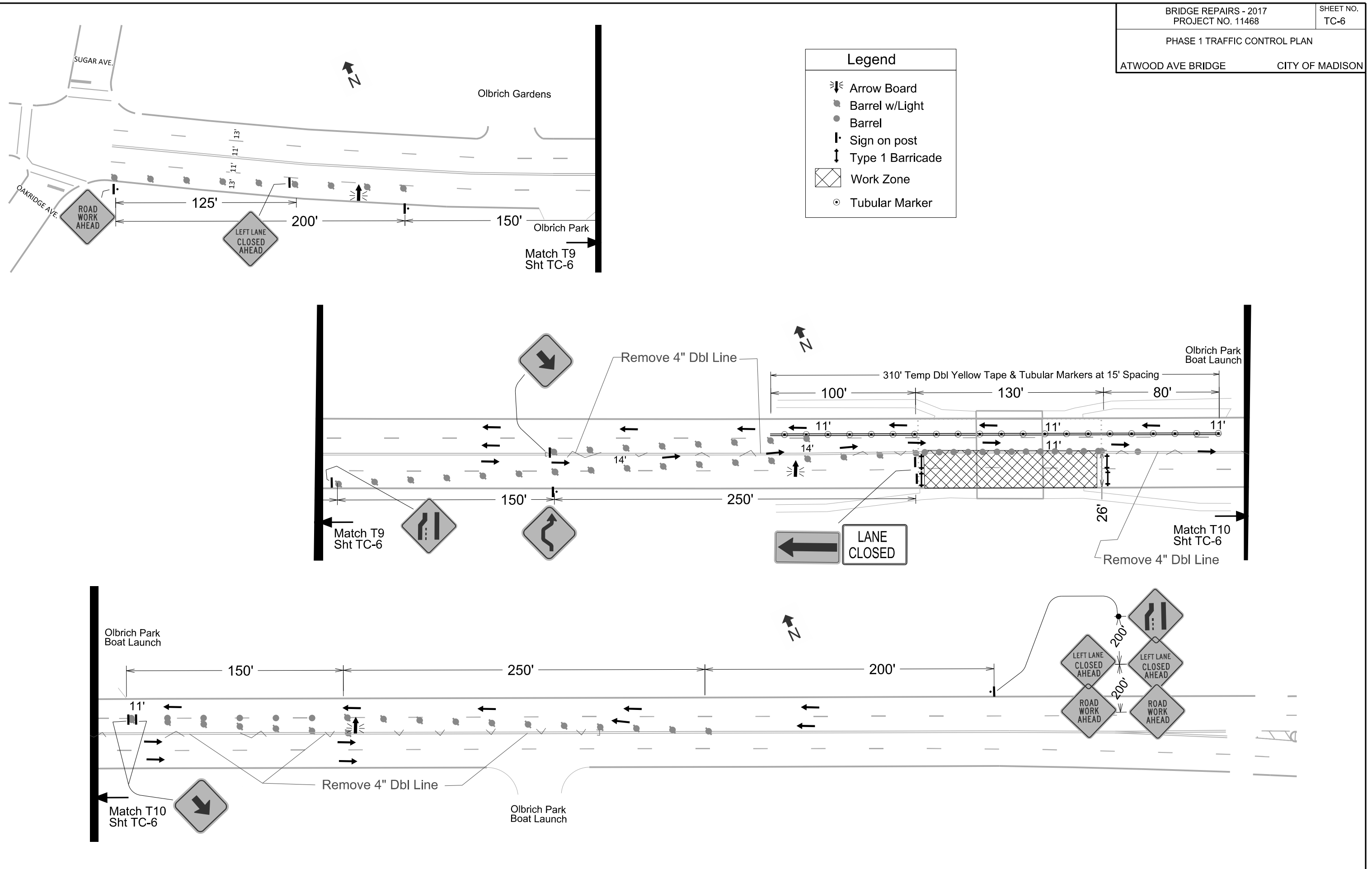
- ↔ Arrow Board
- Barrel w/Light
- Barrel
- ⌋ Sign on post
- ⌋ Type 1 Barricade
- ▨ Work Zone
- Tubular Marker

PLOT SCALE:

PLOT NAME:

REV. DATE:

ORIGINATOR: CITY OF MADISON, TRAFFIC ENG. DIV.



Legend

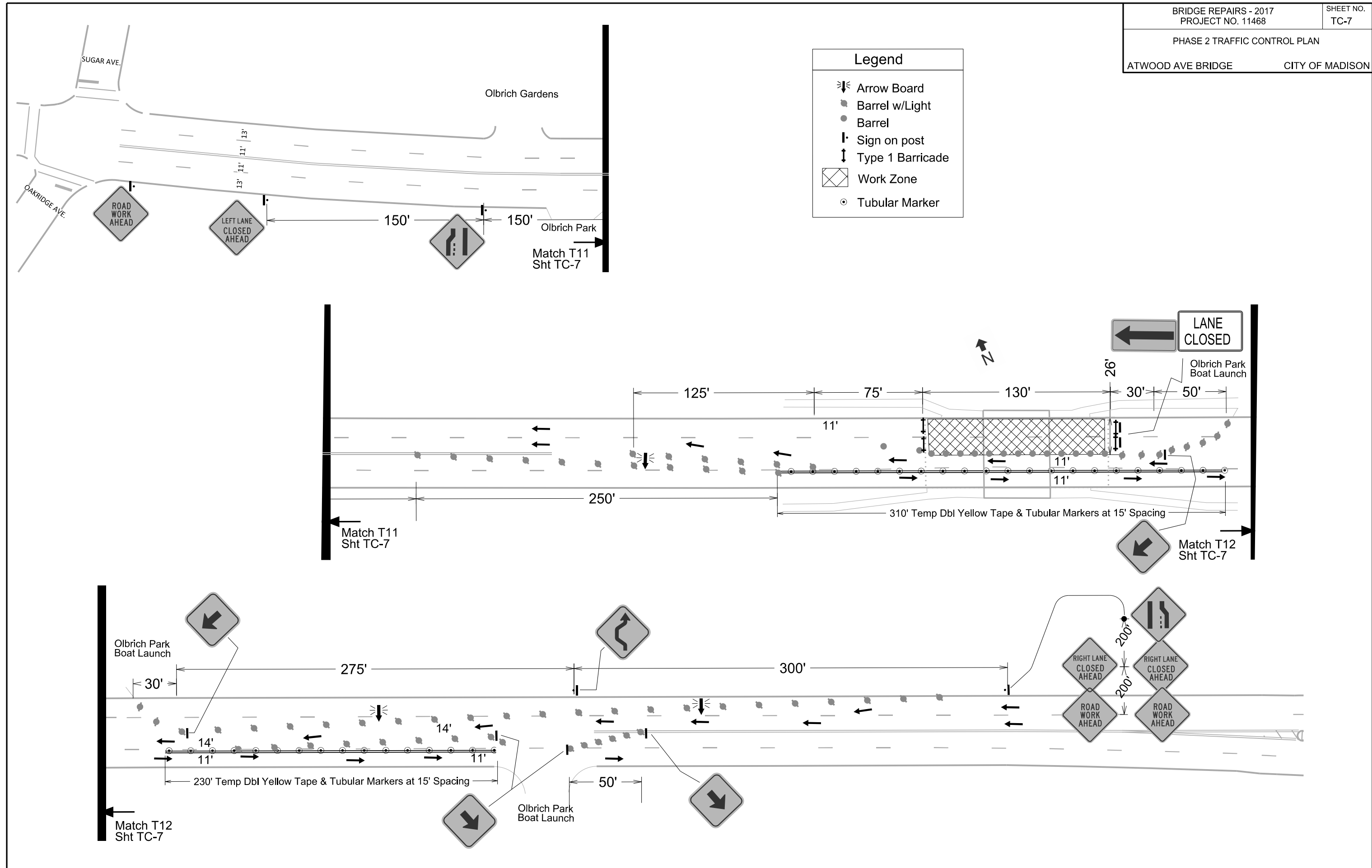
- Arrow Board
- Barrel w/Light
- Barrel
- Sign on post
- Type 1 Barricade
- Work Zone
- Tubular Marker

PLOT SCALE:

PLOT NAME:

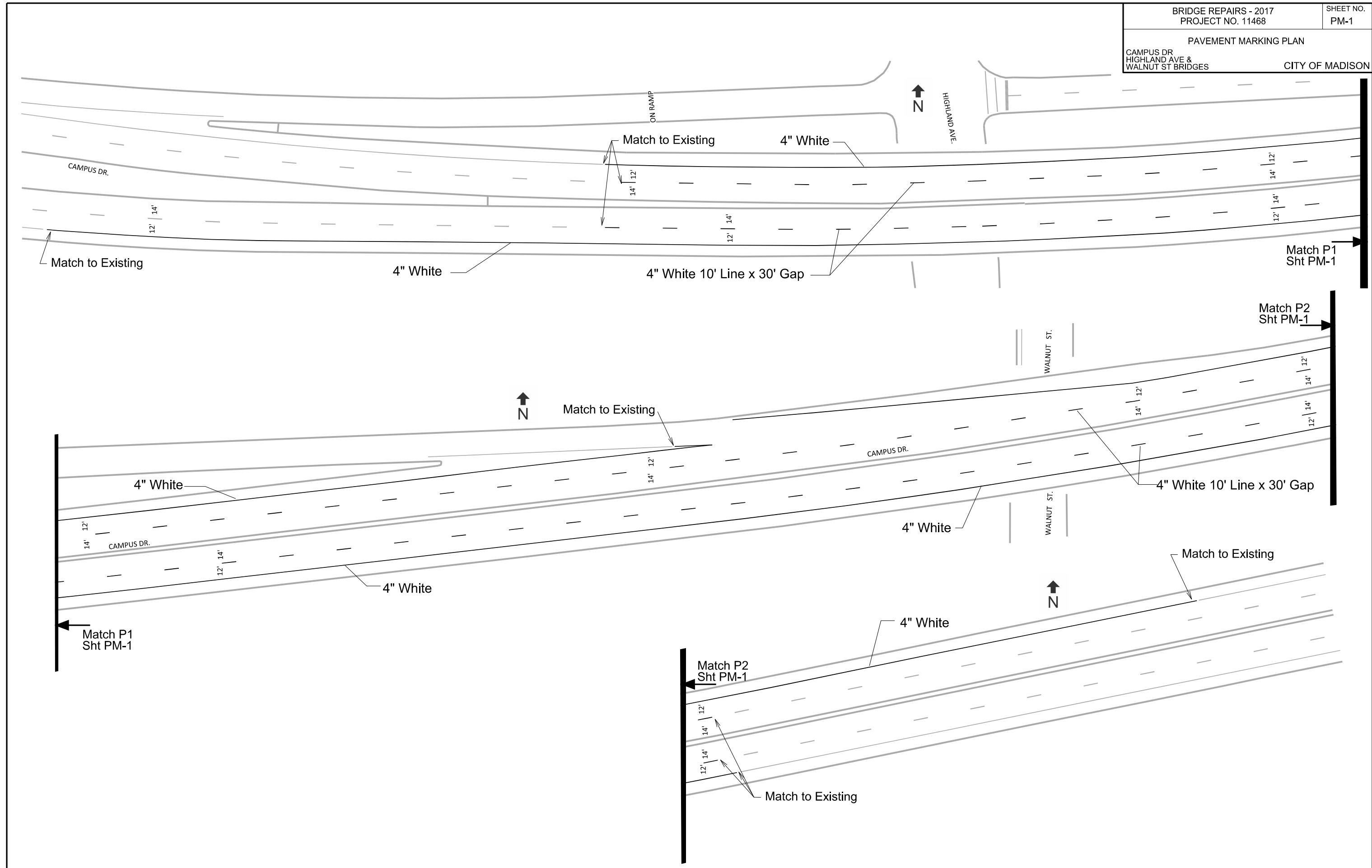
REV. DATE:

ORIGINATOR: CITY OF MADISON, TRAFFIC ENG. DIV.



PAVEMENT MARKING PLAN
CAMPUS DR
HIGHLAND AVE &
WALNUT ST BRIDGES
CITY OF MADISON

PLOT SCALE:
PLOT NAME:
REV. DATE:
ORIGINATOR: CITY OF MADISON, TRAFFIC ENG. DIV.



PAVEMENT MARKING PLAN

ATWOOD AVE BRIDGE

CITY OF MADISON

PLOT SCALE:

PLOT NAME:

REV. DATE:

ORIGINATOR: CITY OF MADISON, TRAFFIC ENG. DIV.



Match to Existing

4" Dbl Yellow Centerline

Olbrich Park Boat Launch

Match to Existing

Match to Existing

13' 11' 13'

13' 11' 13'

13' 11' 13'

13' 11' 13'

13' 11' 13'

4" White 10' Line x 30' Gap

255'

Olbrich Park Boat Launch