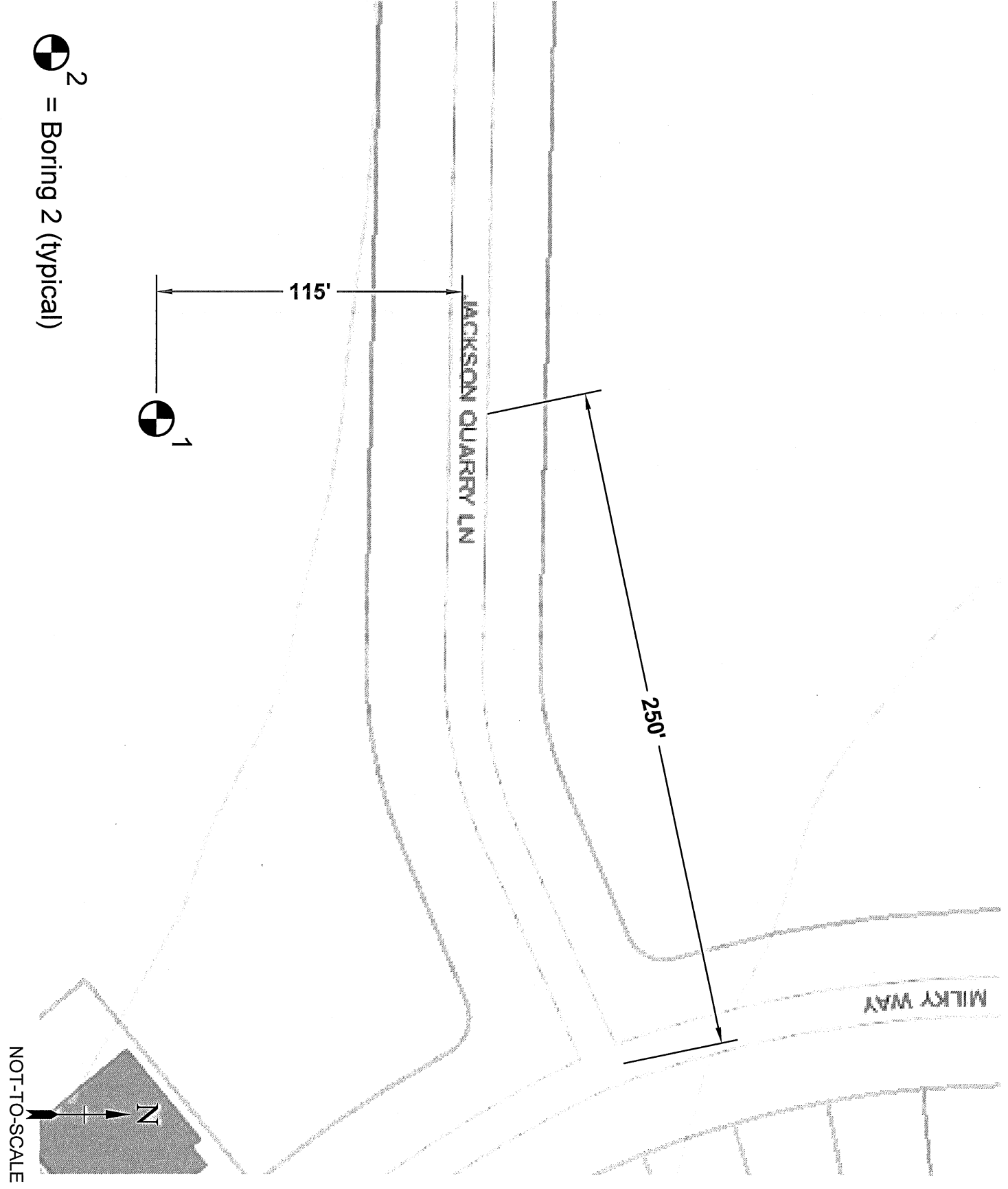


APPENDIX 1
SOIL BORING INFORMATION

GALAXY PARK



 **Soils & Engineering Services, Inc.**
1102 STEWART STREET • MADISON, WISCONSIN 53713
Phone: 608-274-7600 • 888-866-SOIL (7645)
Fax: 608-274-7511 • Email: soils@soils.ws
CONSULTING CIVIL ENGINEERS SINCE 1966

LOCATION SKETCH
Galaxy Park
132 Milky Way
City of Madison, Dane County, Wisconsin

DRAWING
13300.20-1

NOTES

1. The boundary lines between different soil strata, as shown on the Boring Log Record, are approximate and may be gradual.
2. The boring field log contains a description of the soil conditions between samples based on the equipment performance and the soil cuttings. The Boring Log Record contains the description of the soil conditions as interpreted by a geotechnical engineer and/or a geologist after review of the boring field logs and soil samples and/or laboratory test results.
3. We define "Caved Level" as the depth below the existing ground surface at a boring location where the soils have collapsed into the borehole following removal of the drilling tools.
4. We define "Water Level" as the depth below the existing ground surface at a boring location to the level of water in the open borehole at the time indicated unless otherwise defined on the Boring Log Record.
5. We define "at completion" for a boring as being the time when our drilling crew has completed the removal of all drilling tools from the borehole.
6. The Notes and Legend Record and the Boring Log Record should not be separated.

RELATIVE PERCENTAGE TERMS

no	0%
trace	<5%
few	5 to <10%
little	10 to <30%
some	30 to < 50%

TEST RESULTS LEGEND


RELATIVE MOISTURE TERMS AT TIME OF SAMPLING


Frozen or F = Frozen material
 Dry = Dusty, dry to touch, absence of moisture
 Moist or M = Damp to touch, no visible water
 Wet or W = Visible free water

DRILLING METHODS LEGEND

HSA = Continuous flight hollow-stem augers

SAMPLER TYPE LEGEND

 Grab sample

 2-inch-outside-diameter, split-barrel sampler



Soils & Engineering Services, Inc.
 1102 STEWART STREET • MADISON, WISCONSIN 53713
 Phone: 608-274-7600 • 888-866-SOIL (7645)
 Fax: 608-274-7511 • Email: soils@soils.ws
 CONSULTING CIVIL ENGINEERS SINCE 1966

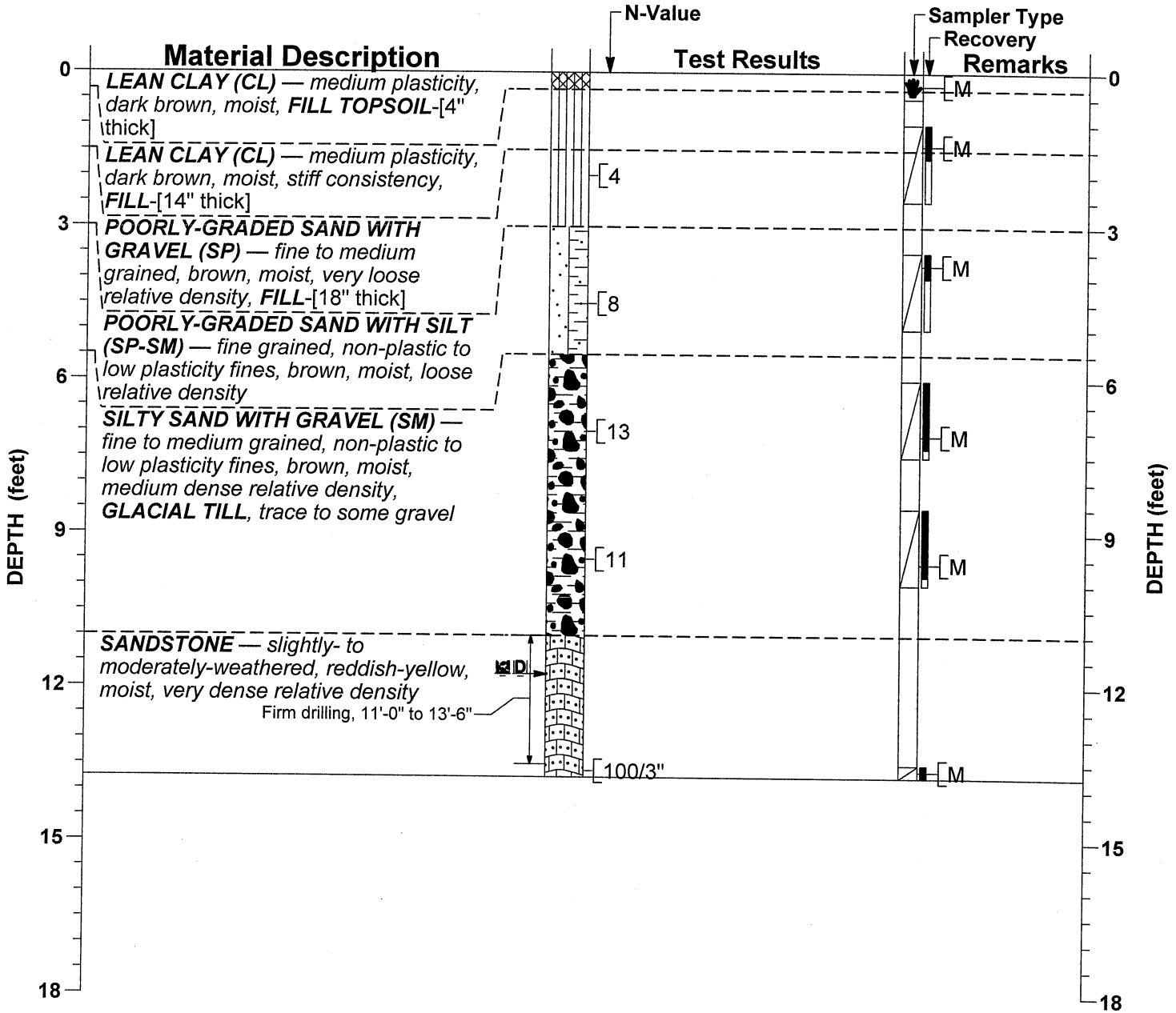
NOTES AND LEGEND RECORD
 Galaxy Park
 132 Milky Way
 City of Madison, Dane County, Wisconsin

13300.20

General Location:

Boring 1

LATITUDE: —	LONGITUDE: —	COUNTY: Dane	SECTION: 2	CREW CHIEF: SWK	DRILL RIG: Geoprobe	PAGE: 1 of 1
NORTHING: —	EASTING: —	TOWNSHIP: (Blooming Grove) 7 N	¼: SW	LOG REVIEW: CMB	HAMMER TYPE: Automatic	TOTAL DEPTH: 13'-9"
STATION: —	OFFSET: —	RANGE: 10 E	¼ ¼: NE	LOG QC: CMB	DATE STARTED: 11/07/2019	DATE COMPLETED: 11/07/2019



WATER LEVEL LEGEND	OTHER LEVEL LEGEND
11'-9" Dry at completion	11'-9" Caved at completion

DRILL METHOD	TOOL SIZE	CASING SIZE	DRILL FLUID	DEPTH FROM	DEPTH TO	HOLE DIA
HSA	2 1/4"	—	None	0'-0"	13'-9"	6.3"
SAMPLING METHOD(S): ASTM D1586						
SURFACE PATCH: —						
BACKFILL: Auger Cuttings, Bentonite Chips, Caved Soil						

The Notes and Legend Record is considered a part of this Boring Log Record.

Soils & Engineering Services, Inc.
 1102 STEWART STREET • MADISON, WISCONSIN 53713
 Phone: 608-274-7600 • 888-866-SOIL (7645)
 Fax: 608-274-7511 • Email: soils@soils.ws
 CONSULTING CIVIL ENGINEERS SINCE 1966

BORING LOG RECORD
 Galaxy Park
 132 Milky Way
 City of Madison, Dane County, Wisconsin

13300.20

APPENDIX C DOCUMENT QUALIFICATIONS

I. GENERAL RECOMMENDATIONS/LIMITATIONS

CGC, Inc. should be provided the opportunity for a general review of the final design and specifications to confirm that earthwork and foundation requirements have been properly interpreted in the design and specifications. CGC should be retained to provide soil engineering services during excavation and subgrade preparation. This will allow us to observe that construction proceeds in compliance with the design concepts, specifications and recommendations, and also will allow design changes to be made in the event that subsurface conditions differ from those anticipated prior to the start of construction. CGC does not assume responsibility for compliance with the recommendations in this report unless we are retained to provide construction testing and observation services.

This report has been prepared in accordance with generally accepted soil and foundation engineering practices and no other warranties are expressed or implied. The opinions and recommendations submitted in this report are based on interpretation of the subsurface information revealed by the test borings indicated on the location plan. The report does not reflect potential variations in subsurface conditions between or beyond these borings. Therefore, variations in soil conditions can be expected between the boring locations and fluctuations of groundwater levels may occur with time. The nature and extent of the variations may not become evident until construction.

II. IMPORTANT INFORMATION ABOUT YOUR GEOTECHNICAL ENGINEERING REPORT

Subsurface problems are a principal cause of construction delays, cost overruns, claims, and disputes. While you cannot eliminate all such risks, you can manage them. The following information is provided to help.

Geotechnical engineers structure their services to meet the specific needs of their clients. A geotechnical engineering study conducted for a civil engineer may not fulfill the needs of a construction contractor or even another civil engineer. Because each geotechnical engineering study is unique, each geotechnical engineering report is unique, prepared *solely* for the client. *No one except you* should rely on your geotechnical engineering report without first conferring with the geotechnical engineer who prepared it. *And no one - not even you* - should apply the report for any purpose or project except the one originally contemplated.

READ THE FULL REPORT

Serious problems have occurred because those relying on a geotechnical engineering report did not read it all. Do not rely on an executive summary. Do not read selected elements only.

A GEOTECHNICAL ENGINEERING REPORT IS BASED ON A UNIQUE SET OF PROJECT-SPECIFIC FACTORS

Geotechnical engineers consider a number of unique, project-specific factors when establishing the scope of a study. Typical factors include: the client's goals, objectives, and risk management preferences; the general nature of the structure involved, its size, and configuration; the location of the structure on the site; and other planned or existing site improvements, such as access roads, parking lots, and underground utilities. Unless the geotechnical engineer who conducted the study specifically indicates otherwise, *do not rely on a geotechnical engineering report* that was:

- not prepared for you,
- not prepared for your project,
- not prepared for the specific site explored, or
- completed before important project changes were made.

Typical changes that can erode the reliability of an existing geotechnical report include those that affect:

- the function of the proposed structure, as when it's changed from a parking garage to an office building, or from a light industrial plant to a refrigerated warehouse,
- elevation, configuration, location, orientation, or weight of the proposed structure,
- composition of the design team, or project ownership.

As a general rule, *always* inform your geotechnical engineer of project changes - even minor ones - and request an assessment of their impact. *CGC cannot accept responsibility or liability for problems that occur because our reports do not consider developments of which we were not informed.*

SUBSURFACE CONDITIONS CAN CHANGE

A geotechnical engineering report is based on conditions that existed at the time the geotechnical engineer performed the study. *Do not rely on a geotechnical engineering report* whose adequacy may have been affected by: the passage of time; by man-made events, such as construction on or adjacent to the site; or by natural events, such as floods, earthquakes, or groundwater fluctuations. *Always* contact the geotechnical engineer before applying the report to determine if it is still reliable. A minor amount of additional testing or analysis could prevent major problems.

MOST GEOTECHNICAL FINDINGS ARE PROFESSIONAL OPINION

Site exploration identifies subsurface conditions only at those points where subsurface tests are conducted or samples are taken. Geotechnical engineers review field and laboratory data and then apply their professional judgement to render an opinion about subsurface conditions throughout the site. Actual subsurface conditions may differ - sometimes significantly - from those indicated in your report. Retaining the geotechnical engineer who developed your report to provide construction observation is the most

effective method of managing the risks associated with unanticipated conditions.

A REPORT'S RECOMMENDATIONS ARE NOT FINAL

Do not over-rely on the confirmation-dependent recommendations included in your report. *Those confirmation-dependent recommendations are not final*, because geotechnical engineers develop them principally from judgement and opinion. Geotechnical engineers can finalize their recommendations *only* by observing actual subsurface conditions revealed during construction. *CGC cannot assume responsibility or liability for the report's confirmation-dependent recommendations if we do not perform the geotechnical-construction observation required to confirm the recommendations' applicability.*

A GEOTECHNICAL ENGINEERING REPORT IS SUBJECT TO MISINTERPRETATION

Other design team members' misinterpretation of geotechnical engineering reports has resulted in costly problems. Confront that risk by having your geotechnical engineer confer with appropriate members of the design team after submitting the report. Also retain your geotechnical engineer to review pertinent elements of the design team's plans and specifications. Constructors can also misinterpret a geotechnical engineering report. Confront that risk by having CGC participate in prebid and preconstruction conferences, and by providing geotechnical construction observation.

DO NOT REDRAW THE ENGINEER'S LOGS

Geotechnical engineers prepare final boring and testing logs based upon their interpretation of field logs and laboratory data. To prevent errors or omissions, the logs included in a geotechnical engineering report should *never* be redrawn for inclusion in architectural or other design drawings. Only photographic or electronic reproduction is acceptable, *but recognize that separating logs from the report can elevate risk.*

GIVE CONSTRUCTORS A COMPLETE REPORT AND GUIDANCE

Some owners and design professionals mistakenly believe they can make constructors liable for unanticipated subsurface conditions by limiting what they provide for bid preparation. To help prevent costly problems, give constructors the complete geotechnical engineering report, *but* preface it with a clearly written letter of transmittal. In that letter, advise constructors that the report was not prepared for purposes of bid development and that the report's accuracy is limited; encourage them to confer with the geotechnical engineer who prepared the report (a modest fee may be required) and/or to conduct additional study to obtain the specific types of information they need or prefer. A prebid conference can also be valuable. *Be sure constructors have sufficient time to perform additional study.* Only then might you be in a position to give constructors the best information available to you, while requiring them to at least share some of the financial responsibilities stemming from unanticipated conditions.

READ RESPONSIBILITY PROVISIONS CLOSELY

Some clients, design professionals, and constructors do not recognize that geotechnical engineering is far less exact than other engineering disciplines. This lack of understanding has created unrealistic

expectations that have led to disappointments, claims, and disputes. To help reduce the risk of such outcomes, geotechnical engineers commonly include a variety of explanatory provisions in their reports. Sometimes labeled "limitations," many of these provisions indicate where geotechnical engineer's responsibilities begin and end, to help others recognize their own responsibilities and risks. *Read these provisions closely.* Ask questions. Your geotechnical engineer should respond fully and frankly.

ENVIRONMENTAL CONCERNS ARE NOT COVERED

The equipment, techniques, and personnel used to perform an *environmental* study differ significantly from those used to perform a *geotechnical* study. For that reason, a geotechnical engineering report does not usually relate any environmental findings, conclusions, or recommendations; e.g., about the likelihood of encountering underground storage tanks or regulated contaminants. *Unanticipated environmental problems have led to numerous project failures.* If you have not yet obtained your own environmental information, ask your geotechnical consultant for risk management guidance. *Do not rely on an environmental report prepared for someone else.*

OBTAIN PROFESSIONAL ASSISTANCE TO DEAL WITH MOLD

Diverse strategies can be applied during building design, construction, operation, and maintenance to prevent significant amounts of mold from growing on indoor surfaces. To be effective, all such strategies should be devised for the *express purpose* of mold prevention, integrated into a comprehensive plan, and executed with diligent oversight by a professional mold prevention consultant. Because just a small amount of water or moisture can lead to the development of severe mold infestations, many mold prevention strategies focus on keeping building surfaces dry. While groundwater, water infiltration, and similar issues may have been addressed as part of the geotechnical engineering study whose findings are conveyed in this report, the geotechnical engineer in charge of this project is not a mold prevention consultant; *none of the services performed in connection with the geotechnical engineer's study were designed or conducted for the purpose of mold prevention. Proper implementation of the recommendations conveyed in this report will not of itself be sufficient to prevent mold from growing in or on the structure involved.*

RELY ON YOUR GEOTECHNICAL ENGINEER FOR ADDITIONAL ASSISTANCE

Membership in the Geotechnical Business Council (GBC) of Geoprofessional Business Association exposes geotechnical engineers to a wide array of risk confrontation techniques that can be of genuine benefit for everyone involved with a construction project. Confer with CGC, a member of GBC, for more information.

Modified and reprinted with permission from:

Geotechnical Business Council
of the Geoprofessional Business Association
8811 Colesville Road, Suite G 106
Silver Spring, MD 20910