

**GENERAL NOTES**

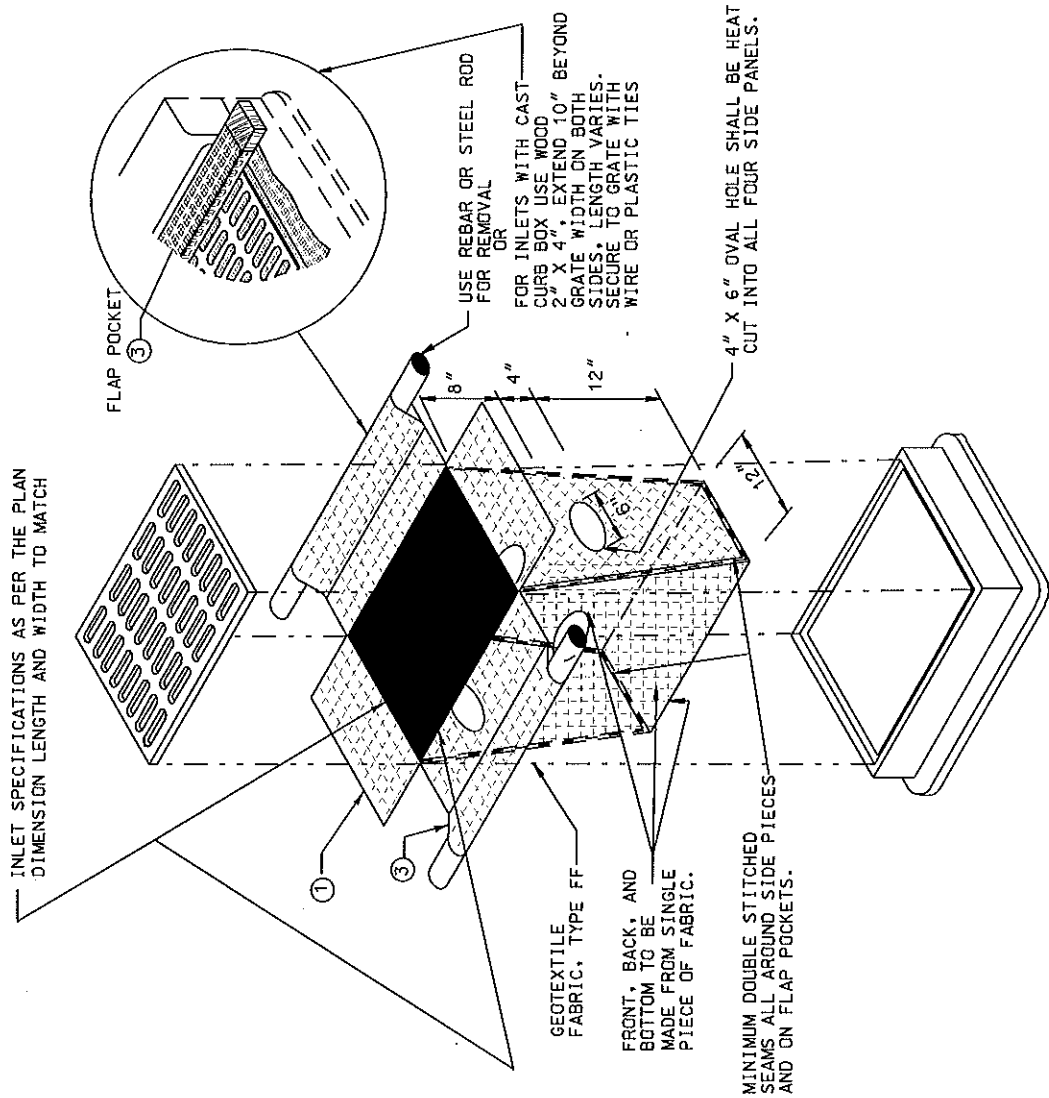
MANUFACTURED ALTERNATIVES APPROVED AND LISTED ON THE WISDOT'S EROSION CONTROL PRODUCT ACCEPTABILITY LIST MAY BE SUBSTITUTED.

WHEN REMOVING OR MAINTAINING INLET PROTECTION, CARE SHALL BE TAKEN SO THAT THE SEDIMENT TRAPPED ON THE GEOTEXTILE FABRIC DOES NOT FALL INTO THE INLET. ANY MATERIAL FALLING INTO THE INLET SHALL BE REMOVED IMMEDIATELY.

THE INSTALLED BAG SHALL HAVE A MINIMUM SIDE CLEARANCE, BETWEEN THE INLET WALLS AND THE BAG, MEASURED AT THE BOTTOM OF THE OVERFLOW HOLES, OF 3", WHERE NECESSARY THE CONTRACTOR SHALL TRIM EXCESS FABRIC IN THE FLOW LINE TO WITHIN 3" OF THE GRATE.

CINCH THE BAG, USING PLASTIC ZIP TIES, TO ACHIEVE THE 3" CLEARANCE. THE TIES SHALL BE PLACED AT A MAXIMUM OF 4" FROM THE BOTTOM OF THE BAG.

- ① FINISHED SIZE, INCLUDING FLAP POCKETS WHERE REQUIRED, SHALL EXTEND A MINIMUM OF 10" AROUND THE PERIMETER TO FACILITATE MAINTENANCE OR REMOVAL.
- ② FOR INLET PROTECTION WITH CURB BOX AN ADDITIONAL 18" OF FABRIC IS WRAPPED AROUND THE WOOD AND SECURED WITH STAPLES. THE WOOD SHALL NOT BLOCK THE ENTIRE HEIGHT OF THE CURB BOX OPENING.
- ③ FLAP POCKETS SHALL BE LARGE ENOUGH TO ACCEPT WOOD 2X4.



INLET SPECIFICATIONS AS PER THE PLAN DIMENSION LENGTH AND WIDTH TO MATCH

USE REBAR OR STEEL ROD FOR REMOVAL OR

FOR INLETS WITH CAST CURB BOX USE WOOD 2" X 4", EXTEND 10" BEYOND GRATE WIDTH ON BOTH SIDES. LENGTH VARIES. SECURE TO GRATE WITH WIRE OR PLASTIC TIES

4" X 6" OVAL HOLE SHALL BE HEAT CUT INTO ALL FOUR SIDE PANELS.

GEOTEXTILE FABRIC, TYPE FF FRONT, BACK, AND BOTTOM TO BE MADE FROM SINGLE PIECE OF FABRIC.

MINIMUM DOUBLE STITCHED SEAMS ALL AROUND SIDE PIECES AND ON FLAP POCKETS.

(CAN BE INSTALLED IN ANY INLET TYPE WITH OR WITHOUT A CURB BOX AS PER NOTE ② )

2006

CITY OF MADISON  
ENGINEERING DIVISION

**INLET PROTECTION  
TYPE D**

STANDARD DETAIL DRAWING 1.06